

A taxonomic study of Chinese species of the *alberti* group of *Metaphycus* (Hymenoptera, Encyrtidae)

Ying Wang^{1,2,†}, Cheng-De Li^{1,‡}, Yan-Zhou Zhang^{2,§}

1 Division of Forest Protection, School of Forestry, Northeast Forestry University, Harbin, 150040, China

2 Key Laboratory of Zoological Systematics and Evolution, Institute of Zoology, Chinese Academy of Sciences, Beijing 100101, China

† [urn:lsid:zoobank.org/author:CB084688-7F13-4025-BF31-11551031C777](https://doi.org/urn:lsid:zoobank.org/author:CB084688-7F13-4025-BF31-11551031C777)

‡ [urn:lsid:zoobank.org/author:0506228C-0D68-41D8-8FAC-777E81E31FC2](https://doi.org/urn:lsid:zoobank.org/author:0506228C-0D68-41D8-8FAC-777E81E31FC2)

§ [urn:lsid:zoobank.org/author:F61F801F-52C0-4C7A-9331-4F663EC6BB04](https://doi.org/urn:lsid:zoobank.org/author:F61F801F-52C0-4C7A-9331-4F663EC6BB04)

Corresponding author: Cheng-De Li (lichengde0608@yahoo.com.cn); Yan-Zhou Zhang (zhangyz@ioz.ac.cn)

Academic editor: N. Johnson | Received 18 October 2012 | Accepted 25 February 2013 | Published 5 April 2013

[urn:lsid:zoobank.org/pub:3256E500-3DAF-4805-B6D3-5427AD371185](https://doi.org/urn:lsid:zoobank.org/pub:3256E500-3DAF-4805-B6D3-5427AD371185)

Citation: Wang Y, Li C-D, Zhang Y-Z (2013) A taxonomic study of Chinese species of the *alberti* group of *Metaphycus* (Hymenoptera, Encyrtidae). ZooKeys 285: 53–88. doi: 10.3897/zookeys.285.4142

Abstract

Ten *alberti*-group species of the genus *Metaphycus* Mercet from China are reviewed. Six species, *M. dorsalis* sp. n., *M. chinensis* sp. n., *M. wui* sp. n., *M. stylatus* sp. n., *M. fusiscapus* sp. n., and *M. fusiformis* sp. n. are described as new to science. Four known species from China are redescribed. A key to the females of the Chinese species is given and photomicrographs are provided to illustrate morphological characters of these species. All specimens, unless otherwise specified, are deposited in the National Zoological Museum of China, Institute of Zoology, Chinese Academy of Sciences, Beijing.

Keywords

Chalcidoidea, parasitoids, natural enemy, new species, China

Introduction

Metaphycus is a large genus of the family Encyrtidae, including 455 species worldwide (Noyes 2012). All species of *Metaphycus* with known biology are primary endoparasitoids of scale insects, mainly species of Coccidae, Diaspididae, Eriococcidae and Mar-

garodidae (Guerrieri and Noyes 2000; DeBach and Rosen 1991). *Metaphycus* play a role in the control of agricultural and forestry pests, and probably contribute to the population control of potential pests of forest and fruit trees, ornamentals and agricultural crops. In China, *M. parasaissetiae* controls their host *Parasaissetia nigra* at the earlier stage of the egg-laying season (Zhang et al. 2010). It is one of the most successful groups of insects to have been used in the biological control of scale insects (such as *Coccus* and *Saissetia*) (Guerrieri and Noyes 2000; Noyes 2004; Lotfalizadeh 2010).

Due to the economical and particularly the extraordinary diversification of *Metaphycus*, many taxonomic works have been published and a few good keys have been presented for the regional species of *Metaphycus* (Compere 1940; Annecke and Mynhardt 1971, 1972, 1981; Myartseva 1987; Viggiani and Guerrieri 1988; Guerrieri and Noyes 2000; Trjapitzin 1989; Zeya and Hayat 1993). Most of them are based on the distinction of species groups using the palpal formula as suggested by Compere and Annecke (1960). Based on the palpal formula, Compere and Annecke (1960) suggested dividing the genus *Metaphycus* into three species groups: *alberti*-group (Plate I–A) (with 2-segmented maxillary palpi), *insidiosus*-group (Plate I–B) (with 3-segmented maxillary palpi) and *zebratus*-group (Plate I–C) (with 4-segmented maxillary palpi). The *alberti*-group is interpreted here as having 2-segmented maxillary and 2-segmented labial palpi (Annecke and Mynhardt 1971; Guerrieri and Noyes 2000). Graham (1959) used *hederaceus* as the group name, but later he proposed *asterolecanii* for the same group, since *hederaceus* belongs to *Aphycus* rather than *Metaphycus* (Graham, 1969). Tachikawa (1963) was the first author to use *alberti* as the name of this group, and this is widely accepted (Guerrieri and Noyes 2000; Noyes 2004; Zeya and Hayat 1993). Guerrieri and Noyes (2000) described *M. babas* as a new species, with a palpal formula of 2-3. Therefore, they prefer to define these species on the number of segments in the maxillary palpi alone. Noyes (2004) broke with this framework and introduced several other characters (e.g. presence or absence of subapical setae on the 2nd valvifer). These characters are very difficult to observe unless high quality slide-mounted specimens are prepared. In the course of this work, the framework of Compere and Annecke (1960) was followed.

The Chinese fauna of *Metaphycus* is poorly known, though some taxonomic contributions (Jiang 1982; Shi 1986; Xu and Jing 1990) have been made in the later years of past century. But some synonyms and homonyms can be found easily, such as *Metaphycus ericeri* Xu & Jiang, 1990 (renamed *M. xujiangi* by Özdikmen 2011). Recently, several new species and new records have been reported from China (Dang and Wang 2002; Li and Xu 2006; Li and Li 2008; Zhang and Huang 2006; Zhang and Wu 2008; Tan 2008). So far, more than twenty species of *Metaphycus* species have been recorded from China, including four *alberti* group species. To facilitate the accurate identification of this large group of Encyrtidae, systematic study of all species known in China is necessary (Zhang and Wu 2008). The present work is part of this effort.

Accurate identification of *Metaphycus* species is very difficult because of their small size and general appearance (Annecke and Mynhardt 1971; Guerrieri and Noyes 2000). Thus high quality slide preparation is needed, and it is necessary to dissect

the mouthparts and ovipositor parts. The characters (e.g. body coloration, width of frontovertex) used in the keys to species are disputable (Guerrieri and Noyes 2000); however our recent studies using molecular markers show these characters are arguable and can help us to disentangle these species complexes (unpublished data).

Morphological terminology and abbreviations follow those of Noyes (2004). Absolute measurements were used for body length. Relative measurements were used for other dimensions and measured with a Motic SMZ-168 stereomicroscope, under 50x magnification, and the absolute measurement of each unit is 0.02 mm. The following abbreviations are used in the text:

F1, F2, ... Fn	Funicle segment number
AOD	Largest diameter of anterior ocellus
HW	Head width measured in facial view
FV	Minimum width of the frontovertex
FVL	Length of frontovertex from occipital margin to top of antennal scrobes as seen in dorsal view
MS	Malar space or the minimum distance between eye and mouth margin
POL	The minimum distance between the posterior ocelli
OCL	The minimum distance between the posterior ocellus and the occipital margin
AOL	The minimum distance between posterior ocellus and anterior ocellus
OOL	The minimum distance between the eye margin and the adjacent posterior ocellus
POD	Largest diameter of posterior ocellus
EL	The maximum diameter of eye
EW	The minimum diameter of eye
SL	The length of the scape
SW	The maximum width of the scape
FWL	Length of fore wing excluding the marginal fringe
FWW	The maximum width of the fore wing excluding the marginal fringe
HWL	Length of hind wing, excluding the marginal fringe
HWW	Width of hind wing, measured at the widest point, excluding the marginal fringe
MT	Length of the mid tibia
OL	Length of ovipositor
GL	Length of the gonostylus
BMNH	Natural History Museum, London, UK
ICZN	International Commission of Zoological Nomenclature
IZCAS	Institute of Zoology, Chinese Academy of Sciences, Beijing, PR China
USNM	United States National Museum, Washington, DC, USA
ZJU	Zhejiang University, Hangzhou, China
SCU	Sichuan University, Chengdu, China
KYUN	Kyoto University, Kyoto, Japan

Taxonomy of *Metaphycus* Mercet

Aenasioidea Girault, 1911: 171. Type species: *Aenasioidea latiscapus* Girault, by original designation. Synonymy by Noyes and Woolley (1994: 1329). Suppressed: *Metaphycus* given precedence over *Aenasioidea* by the International Commission of Zoological Nomenclature (ICZN 1998).

Metaphycus Mercet, 1917: 138. Type species: *Aphycus zebratus* Mercet, by monotypy. *Tyndarichoidea* Girault, 1920: 189. Type species: *Tyndarichoidea mexicanus* Girault, by monotypy. Synonymy by Noyes and Woolley 1994: 1329.

Euaphycus Mercet, 1921: 97. Type species: *Encyrtus hederaceus* Westwood, by subsequent designation of Mercet 1925: 23, as subgenus of *Aphycus* Mayr. Synonymy by Compere and Annecke 1960: 384. *Encyrtus hederaceus* Westwood was misidentified by Mercet; see Graham 1969: 224–225.

Metaphycus Mercet, 1925: 28. Generic status.

Mercetiella Dozier, 1926: 98. Type species: *Mercetiella reticulata* Dozier, by original designation. Synonymy by Trjapitzin and Gordh 1978: 636.

Oaphycus Girault, 1932: 5. Type species: *Aphycus sanguinithorax* Girault, by original designation. Synonymy by Noyes and Hayat 1984: 298.

Erythrphycus Compere, 1947: 7. Type species: *Erythrphycus argyrocomus* Compere, by original designation. Synonymy by Noyes and Woolley 1994: 1329.

Melanphycus Compere, 1947: 5. Type species: *Pseudococcobius fumipennis* Timberlake, by original designation. Synonymy by Noyes 1980: 212.

Anaphycus Sugonjaev, 1960: 372. Type species: *Aphycus nitens* Kurdjumov, by original designation. Synonymy by Trjapitzin 1971: 126.

Mesaphycus Sugonjaev, 1960: 370. Type species: *Aphycus picearum* Erdős, by original designation. Synonymy by Guerrieri and Noyes 2000: 148.

Notoencyrtus De Santis, 1964: 211. Type species: *Notoencyrtus guttofasciatus* De Santis, by original designation. Synonymy by Noyes 1980: 212.

Xenaphycus Sharkov & Voynovich, 1988: 826. Type species: *Paraphycus flavovarius* Mercet, by subsequent designation of Trjapitzin (1982: 38). Synonymy by Guerrieri and Noyes 2000: 148.

Aenigmaphycus Sharkov & Voynovich, 1988: 826. Type species: *Aenigmaphycus paluster* Sharkov and Voynovich, by monotypy. Synonymy by Guerrieri and Noyes 2000: 148.

Diagnosis. Length 0.7–1.8 mm; robust and squat species; body largely orange, yellow to brown or black (the latter at maximum shiny), never with metallic luster, antenna usually with black and white or yellow segments, fore wing hyaline or partially infuscate, legs mostly yellowish, sometimes tibiae with dark rings. Head with occipital margin sharp; mandible mostly broad with 3 short, subequal teeth. Pronotum short, mesoscutum wider than long, notaular lines variable in length from virtually absent to reaching about 0.7× across mesoscutum; fore wing generally about 2.1–2.7× as long

as broad and with uniform setation, postmarginal vein very short, stigmal vein well developed, longer than marginal and postmarginal vein together; linea calva usually closed and interrupted in posterior third by a few setae. Female: antenna almost always 11-segmented (formula 1163: 1 scape, 1 pedicel, 6 funicle, 3 clava). Gaster with hypopygium reaching half way along gaster to more or less reaching its apex; ovipositor sheath free, in most cases not exerted or only slightly exerted in *M. stylatus* sp. n. Male: generally darker and with more uniform colour in respect to that of corresponding female. Antenna 9-segmented (formula 1161: 1 scape, 1 pedicel, 6 funicle, 1 clava).

Key to *Metaphycus* species of *alberti*-group (females) from China

- 1 Scape (Figs 39, 58) not distinctly flattened and expanded, about or more than 4× as long as broad **2**
- Scape (e.g. Figs 15, 63, 77) distinctly flattened and expanded, less than 3.5× as long as broad **3**
- 2 Fore wing (Fig. 42) hyaline, without a small infusate area beneath stigma vein; ovipositor sheath strongly exerted and about 0.4× as long as ovipositor (Fig. 47)..... ***M. stylatus* sp. n.**
- Fore wing (Fig. 62) hyaline, with a small infusate area beneath stigma vein; ovipositor sheath clearly exerted but only about 0.25× as long as ovipositor (Fig. 61) ***M. nadius* (Walker, 1838)**
- 3 Scape (Figs 1, 8, 15) 2.6–3.5× as long as broad..... **4**
- Scape (e.g. Figs 23, 48, 77) not more than 2.5× as long as broad **6**
- 4 Scape (Fig. 8) with a completely pale yellow dorsal margin, usually 3× as long as broad ***M. alberti* (Howard, 1898)**
- Scape (Fig. 1) with dorsal margin not completely pale yellow **5**
- 5 Mesoscutum and scutellum with a longitudinal dark brown strip medially (Plate I–D) ***M. dorsalis* sp. n.**
- Mesoscutum and scutellum without a dark brown longitudinal strip ***M. dispar* (Mercet, 1925)**
- 6 Scape (Fig. 70) with completely pale yellow dorsal margin, usually 2.4× as long as broad ***M. fusiformis* sp. n.**
- Scape (e.g. Figs 23, 48, 77) without completely pale yellow dorsal margin... **7**
- 7 Ovipositor longer than mid tibiae..... **8**
- Ovipositor shorter than mid tibiae..... **9**
- 8 Mid and hind tibiae with distinct dark brown brown marking (Fig. 67); scape (Fig. 63) about 2× as long as broad ***M. fusiscapus* sp. n.**
- Mid and hind tibiae immaculate (Fig. 36), at most with a fuscous spot near base of mid tibiae; scape (Fig. 30) 2.3× as long as broad ***M. wui* sp. n.**
- 9 F1–F3 subquadrate, not distinctly transverse; clava clearly shorter than scape, about 0.6× as long as scape (Fig. 77)..... ***M. xujiangi* Özdikmen, 2011**
- F1–F3 distinctly transverse; clava about as long as scape (Figs 23, 48) **10**

- 10 Fore wing 2.4× as long as broad (Fig. 53), ocelli forming an angle of about 50°; ovipositor (Fig. 57) about 5.4× as long as ovipositor sheath.....
 *M. ericeri* Trjapitzin, 1967
- Fore wing 2.7× as long as broad (Fig. 25), ocelli forming an angle of about 40°; ovipositor (Fig. 29) about 4.8× as long as ovipositor sheath.....
 *M. chinensis* sp. n.

***Metaphycus dorsalis* sp. n.**

urn:lsid:zoobank.org:act:486A67C0-EE88-4D7C-988A-47ABE6CB1712

http://species-id.net/wiki/Metaphycus_dorsalis

Plate 1D, Figs 1–7

Holotype. ♀, China, Yunnan, Xishuangbanna: 2009.XI.9, Coll. G. Tang (IZCAS).

Paratypes. 2♀♀, the same as holotype; 2♀♀, 1♂, Sichuan, Chengdu, 1961. VII.1–5, Coll. D. X. Liao (IZCAS).

Female: Body length, including ovipositor about 1mm. Frontovertex orange; orange in ocellar area, pale orange between occipital margin and posterior ocelli; immaculate with yellow from occiput to base of mandible; mouth margin medially yellow below torulus; rest of head, except occiput, white; antenna (Fig. 1) with radicle dark brown; scape with both faces dark brown, blackish, only base and apex white; pedicel dark brown in proximal one third, otherwise white; F1–F3 dark brown, F4 very pale brown, F5–F6 white, clava dark brown, becoming slightly paler towards apex, apex very pale brown; occiput with a brown area above foramen, rest white; neck of pronotum dark brown, posterior margin white, lateral spots relatively large and distinct; dorsum of thorax orange; sides and posterior margin of mesoscutum and axillae conspicuously bordered brown, mesoscutum and scutellum (Plate I–D) with brown line from front edge of mesoscutum to apex of scutellum; setae translucent pale brown, silvery in most lights; tegula white with apex pale brown; metanotum orange; mesopleuron yellow; prosternum and mesosternum pale yellow; legs (Figs 5–7) pale yellow; fore wing (Fig. 4) hyaline and with linea calva interrupted; venation yellow-brown; hind wing hyaline; propodeum medially orange-brown, laterally pale yellow; gaster orange and ovipositor sheath orange.

Head with polygonally reticulate sculpture and mesh size slightly less than that of one eye facet; frontovertex about one-fourth head width; ocelli forming an acute angle about 30°; eye not quite reaching occipital margin, separated by much less than diameter of a facet; frontovertex subparallel and from anterior ocellus slightly wider anteriorly; scrobes shallow and U-shaped; antenna with scape about 3–3.1× as long as broad; funicle with F1–F4 smallest, F5 a little larger than F4 but transverse, F6 largest and slightly wider than long; linear sensilla only on F5 and F6; clava 3-segmented, its apex more or less rounded but with a short slightly oblique truncation; mandible relatively broad with three subequal, apical teeth; palpal formula 2-2

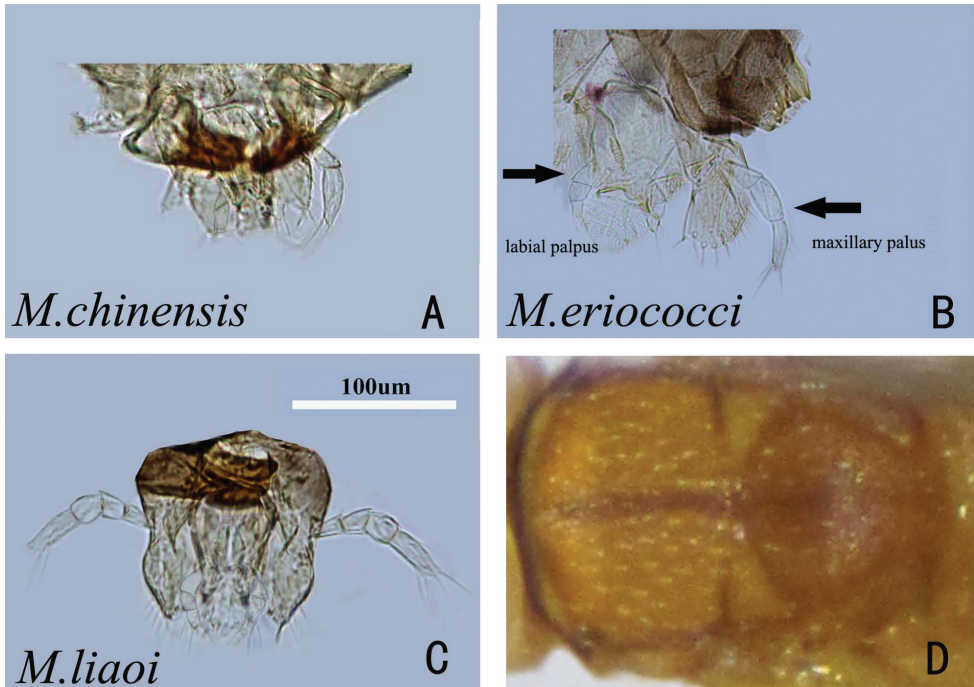


Plate 1. **A** palpal formula 2-2 (*Metaphycus chinensis* sp. n.) **B** palpal formula 3-3 (*Metaphycus eriococci*) **C** palpal formula 4-3 (*Metaphycus liaoi*) **D** thorax of *Metaphycus dorsalis* sp. n. in dorsal view.

(Fig. 3), notaular lines reaching about $0.4\times$ across mesoscutum; fore wing venation and setation as in Fig. 4; ovipositor (Fig. 2) slightly exerted, about $5.6\times$ as long as ovipositor sheath.

Relative measurements: HW 13, FV 3, FVL 7, POL 1.5, AOL 3.5, OOL 0.5, OCL 2, POD 1, AOD 1, EL 9, EW 6, MS 5, SL 6, SW 2, FWL 35, FWW 14, HWL 23, HWW 5, OL 10, GL 2, MT 10.

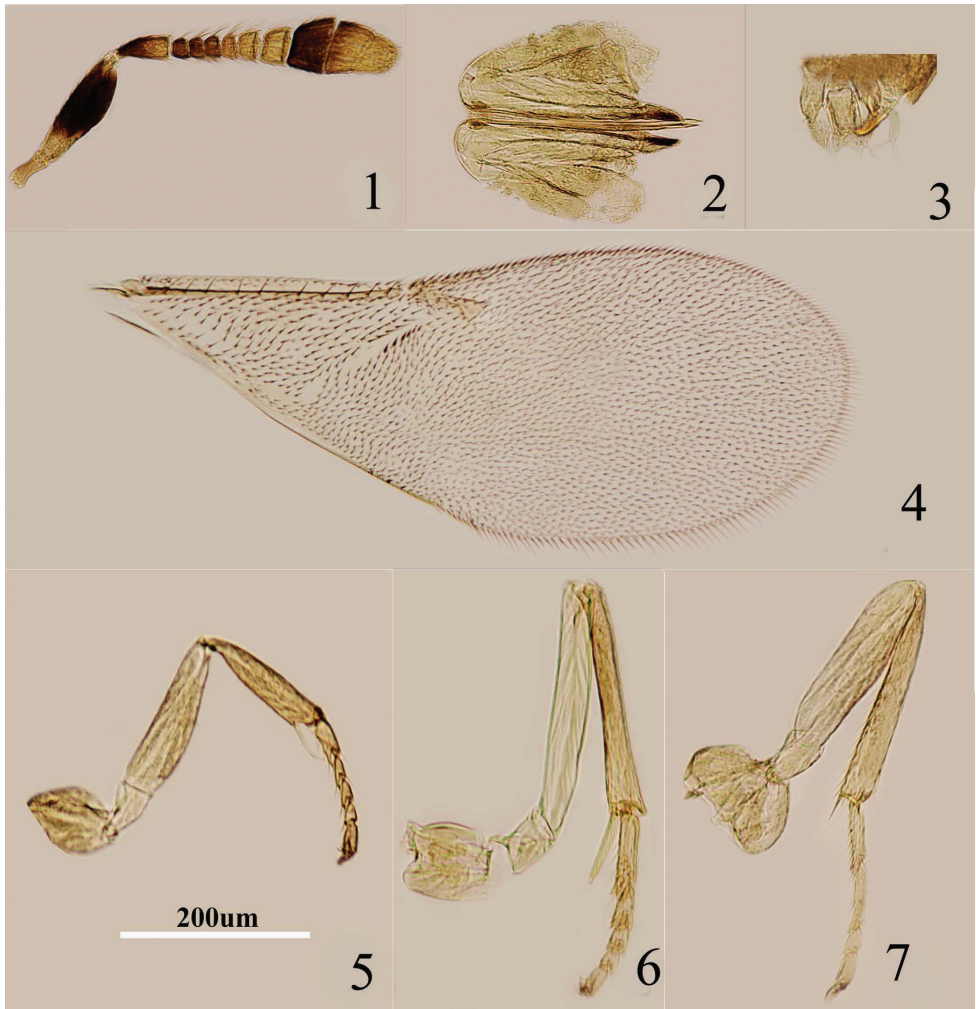
Male. Unknown.

Host. Unknown.

Distribution. China (Sichuan, Yunnan).

Etymology. The specific epithet of this new species refers to the medial longitudinal dark brown strip on the mesoscutum and scutellum.

Diagnosis. Antenna with scape about $3\text{--}3.1\times$ as long as broad; mesoscutum and scutellum with brown line running from front edge of mesoscutum to apex of scutellum; legs pale yellow; fore wing hyaline and with linea calva interrupted. Using the keys of Trjapitzin (1989) and Guerrieri and Noyes (2000), this species runs to *M. dispar* (keys couplet 11 and 15). It can be separated from *dispar* as follows: mesoscutum and scutellum with a longitudinal dark brown strip in the middle (in *dispar*, mesoscutum and scutellum without a longitudinal dark brown strip). Scape about $3\times$ as long as broad (in *dispar*, scape about $3.3\times$ as long as broad). Ovipositor about $5\times$ as long as



Figures 1–7. *Metaphycus dorsalis* sp. n. Female: **1** antenna **2** ovipositor **3** palpal formula **4** fore wing **5** fore leg **6** mid leg **7** hind leg.

ovipositor sheath (in *dispar*, ovipositor about 4.3× as long as ovipositor sheath). The colour of the radicle is dark brown, and the metanotum is orange (in *dispar*, radicle with yellow, and metanotum is brown).

***Metaphycus alberti* (Howard, 1898)**

http://species-id.net/wiki/Metaphycus_alberti

Figs 8–14

Aphycus alberti Howard, 1898: 247. Syntypes ♀♂, Australia (New South Wales), USNM, examined (part).

Metaphycus alberti (Howard); Compere 1957: 222, 224.

Metaphycus aurantiacus Annecke & Mynhardt, 1981: 60–61. Synonymized with *alberti* by Noyes 2004: 254.

Female. Body length, including ovipositor, 0.72–1.1 mm. Frontovortex pale orange; orange in ocellar area, pale orange between occipital margin and posterior ocelli; immaculate from occiput to base of mandible; occiput with a large dark brown area above foramen, rest white; antenna (Fig. 8) with radicle very pale brown; scape mostly pale yellow and with a dark brown mark in middle, dorsal margin pale yellow; pedicel dark brown in proximal half, otherwise white, F1–F3 brown, F4–F6 white, clava dark brown, becoming slightly paler towards apex, apex pale brown; neck of pronotum brown, posterior margin translucent white, lateral spots relatively small and faint, rest white; dorsum of thorax orange; sides and posterior margin of mesoscutum and axillae inconspicuously bordered brown; setae translucent yellow, silvery in most lights; tegula white with apex pale grey-brown; metanotum orange; mesopleuron pale yellow; prosternum and mesosternum pale yellow; legs (Figs 12–14) mainly pale yellow; fore wing (Fig. 11) hyaline and with linea calva interrupted, stigmal vein about 2.3× as long as marginal vein, venation yellow-brown; hind wing hyaline; propodeum medially orange, laterally dark brown, sides white; gaster mostly yellow, sometimes pale brown dorsally from cercal plates to near apex, ovipositor sheath yellow.

Head with polygonally reticulate sculpture and mesh size slightly less than that of one eye facet; ocelli forming an acute angle less than 35°; eye not quite reaching occipital margin, separated by much less than diameter of a facet; frontovortex parallel-sided; scrobes shallow and U-shaped; antenna with scape about 2.7–3.5× as long as broad; funicle with F1–F4 smallest, subequal and transverse, F5 a little larger, F6 largest and slightly wider than long; linear sensilla only on F5 and F6; clava 3-segmented, its apex more or less rounded but with a short slightly oblique truncation; mandible relatively broad with three subequal, apical teeth; palpal formula 2-2 (Fig. 10), notaular lines reaching about 0.4× across mesoscutum; fore wing venation and setae as in Fig. 11; ovipositor (Fig. 9) slightly exserted, about 5.2× as long as ovipositor sheath.

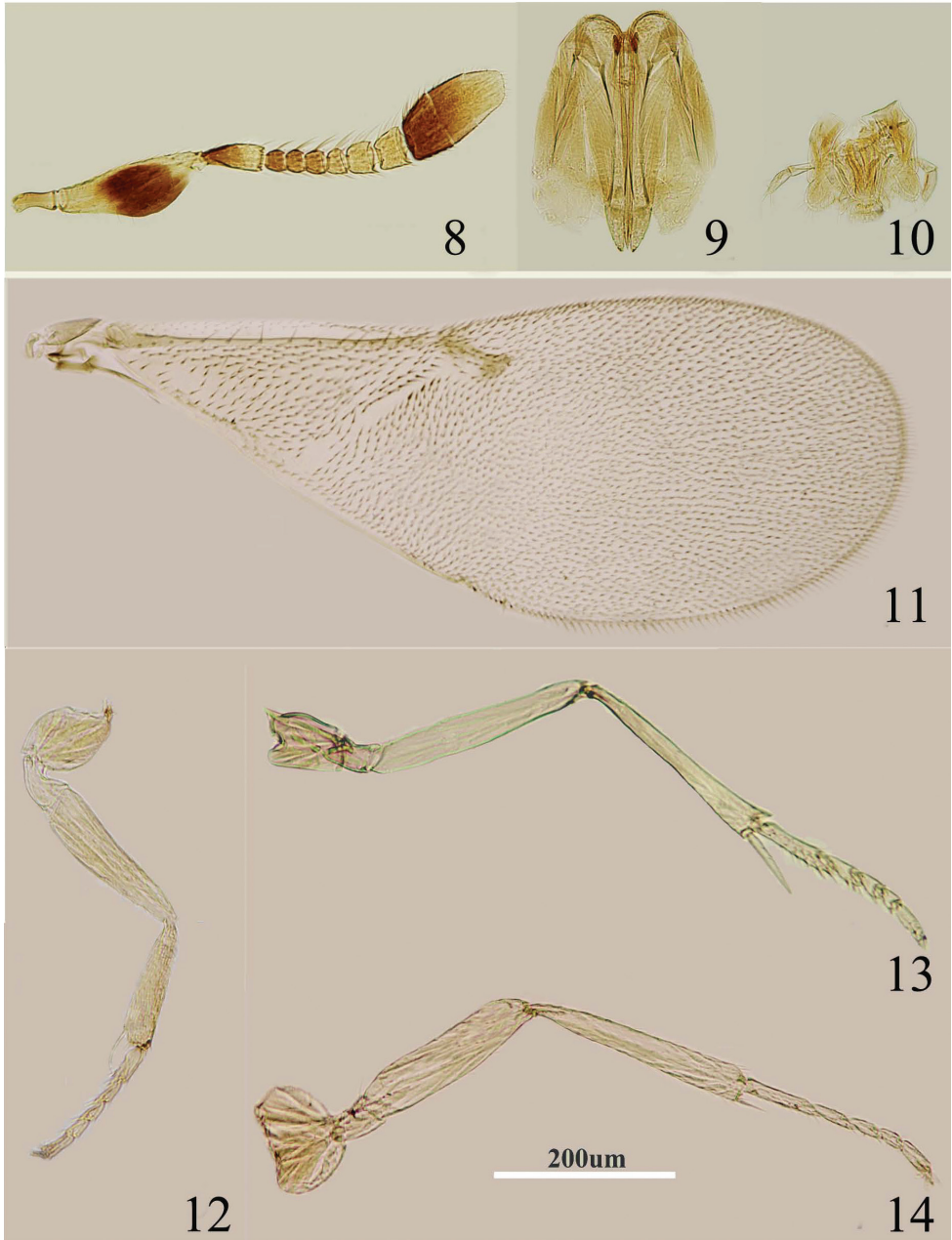
Relative measurements: HW 13, FV 3, FVL 7, POL 2, AOL 4, OOL 1, OCL 2, POD 1, AOD 1.5, EL 8, EW 6, MS 3.5, SL 7, SW 2, FWL 37, FWW 14, HWL 26, HWW 5, OL 10, GL 2, MT 11.

Male. Length 0.7 mm. Generally similar to female but for coloration, structure of clava and genitalia. Frontovortex with ocellar area dark brown; dorsum of thorax and gaster dark brown. Antenna similar to that of female but clava solid and relatively slender; aedeagus about half as long as mid tibia.

Hosts. *Coccus hesperidum* (Annecke & Mynhardt, 1981), *Coccus elongates*, *Coccus longulus* and *Ceroplastes* sp. (Hemiptera: Coccidae) (Noyes 2004).

Distribution. China (Chongqing, Fujian, Guangdong, Sichuan, Zhejiang), Hawaii, USA (California), Costa Rica, South Africa, Swaziland, Australia.

Material examined. China: 5 ♀♀, Zhejiang, Huangyan, 1964.VII.17, Coll. D. X. Liao (IZCAS); 1 ♀, Zhejiang, Ningbo, 2012.VII.3, F. Wang (IZCAS); 3 ♀♀, 1 ♂,



Figures 8–14. *Metaphycus alberti* (Howard) Female: **8** antenna **9** ovipositor **10** palpal formula **11** fore wing **12** fore leg **13** mid leg **14** hind leg.

Sichuan, Chengdu, 1961.VII.10–13, Coll. D. X. Liao (IZCAS); 2♀, Guangdong, Heyuan, 2009.XI.8, F. Yuan and Y. Z. Zhang (IZCAS); 1♀, Fujian, Wuping (Liangye Mt.), 2008.XI.15, Coll. F. Yuan (IZCAS); 1♀, Fujian, Fuzhou, 1998.X, M. Xu (IZ-

CAS); 1♀, Chongqing, Longxi, 1992.VII.15 (BMNH). South Africa: 1♀, Zebediela, 1957–III, Coll. D. P. Annecke (BMNH).

Diagnosis. Antenna with radicle very pale brown; scape mostly pale yellow and with a dark brown mark in middle, dorsal margin pale yellow; legs mainly pale yellow, scape about 2.7–3.5× as long as broad, ovipositor slightly exerted, about 5.2× as long as ovipositor sheath. *Metaphycus alberti* is very similar to *M. dispar* in general coloration and habitus. The female of *alberti* can be identified reliably by the pale yellow dorsal margin of the scape (in *dispar* dorsal margin of the scape medially interrupted by dark brown mark), and the ovipositor about 5.2× as long as ovipositor sheath (in *dispar* ovipositor about 4.3× as long as ovipositor sheath).

Metaphycus dispar (Mercet, 1925)

http://species-id.net/wiki/Metaphycus_dispar

Figs 15–22

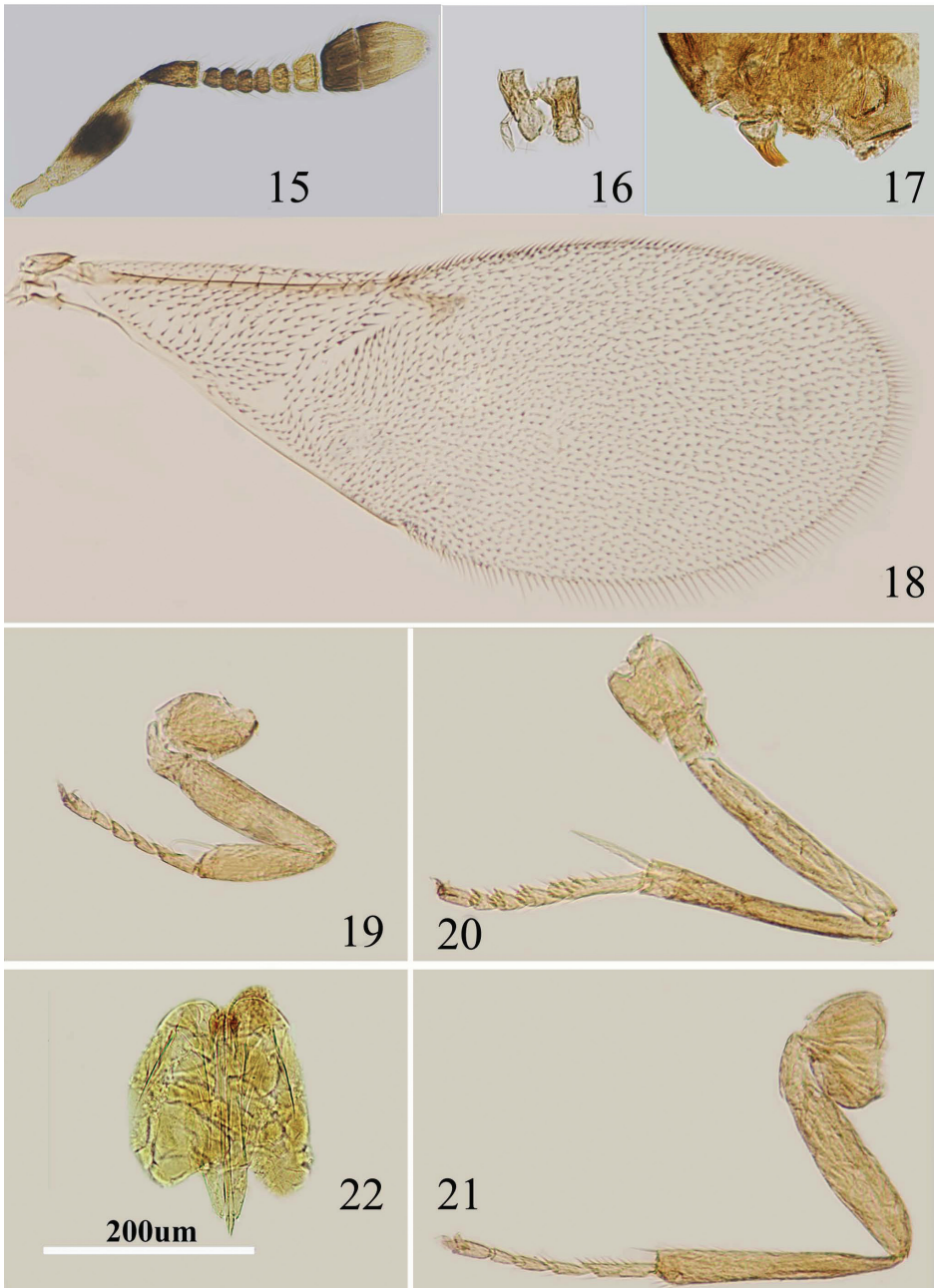
Euaphycus dispar Mercet, 1925: 25–27. Lectotype ♀ (designated by Noyes 1981: 174), Spain, IEE.

Metaphycus tamakatakaigara Tachikawa, 1957: 27–30. Holotype female, Japan, KYUN. Synonymized with *dispar* by Trjapitzin 1989: 232.

Metaphycus dispar (Mercet); Sugonjaev and Babaev 1971: 70–75. Trjapitzin 1978: 314; Trjapitzin 1989: 384; Guerrieri and Noyes 2000: 168.

Female. Body length, including ovipositor, about 0.67mm. Frontoververtex orange; orange in ocellar area, pale yellow between occipital margin and posterior ocelli; immaculate from occiput to base of mandible; mouth margin pale yellow below torulus; rest of head, except occiput, white; antenna (Fig. 15) with radicle yellow; scape mostly pale yellow and with a dark brown mark in middle, dorsal margin in middle brown; pedicel in proximal two thirds dark brown and distal one third white, dark brown area extending slightly towards apex externally and internally; F1–F3 dark brown, F4 pale brown, F5–F6 yellow-white, clava dark brown, becoming slightly paler towards apex, apex yellow; occiput with a large dark brown area above foramen, rest white; neck of pronotum black, posterior margin white, lateral spots relatively large and distinct, rest white; dorsum of thorax orange; sides and posterior margin of mesoscutum and axillae inconspicuously bordered brown; setae translucent pale orange, silvery in most lights; tegula white with apex pale brown; metanotum brown; mesopleuron white; prosternum and mesosternum white; legs (Figs 19–21) pale yellow; fore wing (Fig. 18) hyaline and with linea calva interrupted, venation yellow-brown; hind wing hyaline; propodeum medially pale brown, brown laterally, sides white; gaster dorsally mainly very pale brown, but basal tergite dark brown, sides and venter white; ovipositor sheath yellow.

Head with polygonally reticulate sculpture and mesh size slightly less than that of one eye facet; ocelli forming an acute angle less than 35°; eye not quite reaching occipital margin, separated by much less than diameter of a facet; eye margins subparal-



Figures 15–22. *Metaphycus dispar* (Mercet) Female: **15** antenna **16** palpal formula **17** mandible **18** fore wing **19** fore leg **20** mid leg **21** hind leg **22** ovipositor.

lel with frontovertex slightly wider anteriorly; scrobes shallow and U-shaped; antenna (Fig. 15) with scape about 3.1–3.3× as long as broad; funicle with F1–F4 smallest, subequal and transverse, F5 a little larger and F6 largest, linear sensilla only on F5 and

F6; clava 3-segmented, its apex more or less rounded but with a short slightly oblique truncation; mandible relatively broad with three subequal, apical teeth (Fig. 17); palpal formula 2-2 (Fig. 16), notaular lines virtually absent; fore wing venation and setation as in Fig. 18; ovipositor (Fig. 22) slightly exerted, about 4.3× as long as ovipositor sheath.

Relative measurements: HW 9, FV 3, FVL 4, POL 2 AOL 3, OOL 0.5, OCL 1, POD 1, AOD 1, EL 6, EW 4, MS 3, SL 4.5, SW 1.5, FWL 28, FWW 11, HWL 15, HWW 4, OL 7, GL 1.6, MT 8.

Male. Length 0.7–0.8 mm. Very similar to female except for antenna, genitalia and darker coloration; torulus with several pores inside the lower margin. (Guerrieri and Noyes 2000).

Hosts. *Ericerus pela*, *Eulecanium* sp., *Eulecanium douglasi*, *Eulecanium kunoense*, *Eulecanium rugulosum*, *Eulecanium secretum*, *Eulecanium tiliae*, *Parthenolecanium corni*, *Parthenolecanium persicae*, *Pulvinaria* sp., *Pulvinaria vitis*, *Rhodococcus turanicus*.

Distribution. China (Beijing, Xinjiang), Japan, Kazakhstan, Kirgizia, Kyrgyzstan, Mongolia, Tajikistan, Turkmenistan, Uzbekistan, Armenia, Canary Islands, Czech Republic, Finland, France, Greece, Hungary, Italy, Madeira, Russia, Russia-Adygeyskaya, Russia-Altayskiy Kray, Russia-Buryatskaya Respublika, Russia-Sakhalin Oblast, Slovakia, Spain, United Kingdom, United Kingdom-England, former Yugoslavia, Georgia, USA, (Trjapitzin 1989; Guerrieri and Noyes 2000).

Material examined. China: 1♀, Xinjiang, Kurle, 1965.VI.9, Coll. D. X. Liao (IZCAS); 1♀, Beijing, Changping, 2011.IX.23 (IZCAS); 1♀, Jiangsu, Nianjing, 2011.VI. (IZCAS); 1♀, Liaoning, Shenyang, 1991.VI., Coll. J. X. Lou (IZCAS). France: 1♀, Corsica Propriano, 1989.VIII, Coll. J. S. Noyes (BMNH); Greece: 1♀, Corfu Ano Kourakiana, 1987.VIII.30, Coll. J. S. Noyes (BMNH); Japan: 1♀, Tokyo, 1981.VIII.2, Coll. Ikece & Carlson (BMNH).

Diagnosis. Scape mostly pale yellow and with a dark brown mark in middle, dorsal margin in middle brown, and about 3.1–3.3× as long as broad; ovipositor slightly exerted, about 4.3× as long as ovipositor sheath. See diagnosis under the *M. alberti*. According to Guerrieri and Noyes (2000), *M. dispar* is very close to *M. kozari* Sugonjaev (1975).

Metaphycus chinensis sp. n.

urn:lsid:zoobank.org:act:0D6FA99A-77F0-4525-83B7-AA1B93277977

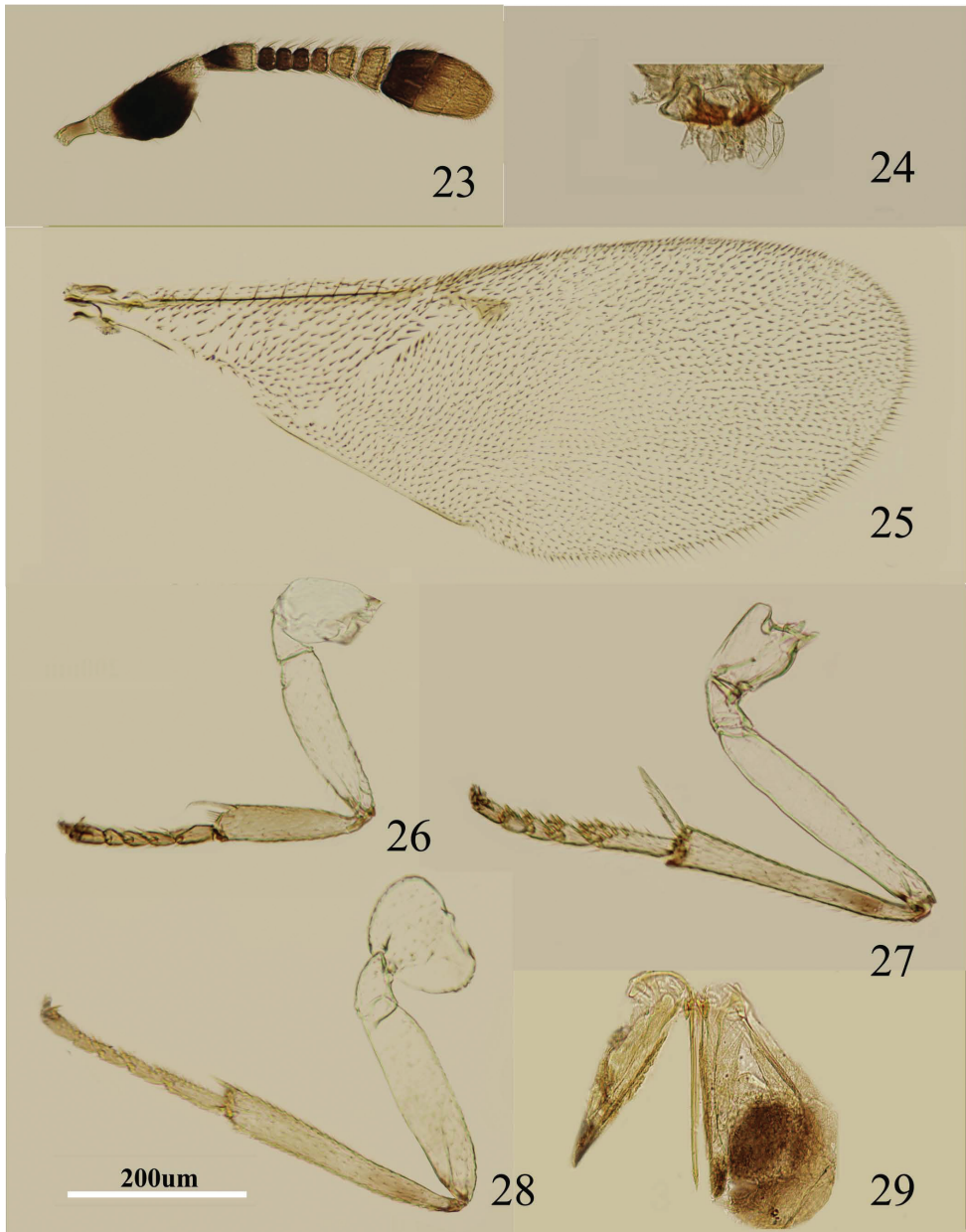
http://species-id.net/wiki/Metaphycus_chinensis

Figs 23–29

Holotype. ♀, China, Jiangsu, Nanjing: 2011.VI.1, coll. L. Ding (IZCAS).

Paratypes. 2♀♀, the same as holotype (IZCAS).

Female: Body length, including ovipositor, 0.7mm. Frontovortex orange; orange in ocellar area, yellow between occipital margin and posterior ocelli; immaculate from occiput to base of mandible; rest of head, except occiput, white; antenna (Fig. 23) with radicle brown; scape with both faces blackish, extreme base and apex yellow; pedicel



Figures 23–29. *Metaphycus chinensis* sp. n. Female: **23** antenna **24** palpal formula **25** fore wing **26** fore leg **27** mid leg **28** hind leg **29** ovipositor.

dark brown in proximal half, otherwise white; F1–F3 dark brown, F4 pale brown, F5–F6 white, clava dark brown, becoming paler towards apex, apex paler brown; occiput with a large dark brown area above foramen, rest white; neck of pronotum black, posterior margin translucent brown, lateral spots relatively large and distinct, rest white;

dorsum of thorax orange; sides and posterior margin of mesoscutum and axillae inconspicuously bordered pale brown; setae translucent orange, silvery in most lights; tegula white with apex pale grey-brown; metanotum pale brown; mesopleuron pale yellow; prosternum and mesosternum white; legs (Figs 26–28) mainly pale yellow, occasionally mid and hind tibiae with faint brown marking; fore wing (Fig. 25) hyaline and with linea calva interrupted, venation yellow-brown; hind wing hyaline; propodeum medially dark brown, laterally white; dorsum of gaster brown but T8 white, sides and venter white; ovipositor sheath yellow.

Head with polygonally reticulate sculpture and mesh size slightly less than that of one eye facet; ocelli forming an angle of about 40°; eye not quite reaching occipital margin, separated by much less than diameter of a facet; frontovertex subparallel-sided; scrobes shallow and U-shaped; lateral antennal groove absent; antenna (Fig. 23) with scape about 2.3× as long as broad; funicle with F1–F4 smallest, subequal and transverse, F5 larger but transverse, F6 largest, linear sensilla only on F5 and F6; clava 3-segmented, its apex more or less rounded but with a short slightly oblique truncation; mandible relatively broad with three subequal, apical teeth; palpal formula 2-2 (Fig. 24), notaular lines virtually absent; fore wing venation and setation as in Fig. 25; ovipositor (Fig. 29) hardly exerted, about 4.8× as long as ovipositor sheath.

Relative measurements: HW 11, FV 3, FVL 6, POL 1.5, AOL 3, OOL 0.5, OCL 1, POD 1, AOD 1, EL 7, EW 5, MS 3.5, SL 5, SW 2.2, FWL 30, FWW 11, HWL 19, HWW 3, OL 9, GL 1.9, MT 11.

Male. Unknown.

Host. Unknown.

Distribution. China (Jiangsu).

Etymology. The specific epithet of this new species is derived from the type locality “China”.

Diagnosis. Antenna with radicle brown; scape with both faces blackish, extreme base and apex yellow; scape about 2.3× as long as broad; dorsum of gaster brown but T8 white, sides and venter white; ovipositor sheath yellow; ovipositor hardly exerted, about 4.8× as long as ovipositor sheath. This species is close to *M. ericeri* in appearance. It can be separated from the latter as follows: fore wing 2.7× as long as broad (Fig. 25), ocelli forming an angle of about 40°; ovipositor (Fig. 29) about 4.8× as long as ovipositor sheath (in *ericeri*, fore wing 2.4× as long as broad (Fig. 53), ocelli forming an angle of about 50°; ovipositor (Fig. 57) about 5.4× as long as ovipositor sheath).

***Metaphycus wui* sp. n.**

urn:lsid:zoobank.org:act:9C8CB15E-29C7-40C1-8CAD-DA6EBAEA2AE6

http://species-id.net/wiki/Metaphycus_wui

Figs 30–38

Holotype. ♀, China, Guangxi, Chongzuo 2011.IV.22, ex. *Ceroplastes* sp., coll. S. A. Wu (IZCAS).

Paratypes. 2♀♀, same as holotype (IZCAS).

Female: Body length, including ovipositor, 0.7–0.8mm. Frontoververtex orange; orange in ocellar area, orange between occipital margin and posterior ocelli; gena with brown-yellow from occiput to base of mandible; mouth margin yellow below torulus; rest of head, except occiput, white; antenna (Fig. 30) with radicle very pale brown; scape mostly black only extreme base and apex white; pedicel dark brown in proximal half otherwise white, F1–F4 dark brown, F5–F6 white, clava dark brown, becoming slightly paler towards apex, apex paler brown; occiput with a large black area above foramen, rest white; neck of pronotum black, posterior margin brown, lateral spots relatively large and distinct, rest brown; dorsum of thorax brown-yellow; sides and posterior margin of mesoscutum and axillae inconspicuously bordered yellow-brown (Fig. 34); setae translucent yellow, silvery in most lights; tegula white only apex pale brown; metanotum dark brown; mesopleuron pale yellow; prosternum and mesosternum white; legs (Figs 35–37) mainly pale brown-yellow; fore wing (Fig. 32) hyaline, venation yellow-brown; hind wing hyaline and with linea calva interrupted; propodeum medially dark brown; gaster dorsally brown, side and venter white; ovipositor sheath pale yellow.

Head with polygonally reticulate sculpture and mesh size slightly less than that of one eye facet; ocelli forming an angle of about 45°; eye not quite reaching occipital margin, separated by much less than diameter of a facet; eye margins subparallel with frontoververtex slightly wider anteriorly; scrobes shallow and U-shaped; antenna (Fig. 30) with scape about 2.3× as long as broad; funicle with F1–F4 smallest, subequal and transverse, F5 a little larger, F6 largest and quadrate, linear sensilla only on F5 and F6; clava 3-segmented, its apex rounded; mandible relatively broad with three subequal, apical teeth; palpal formula 2-2 (Fig. 31), notaular lines reaching about 0.5× across mesoscutum (Fig. 33); fore wing venation and setation as in Fig. 32; ovipositor (Fig. 38) slightly exserted, about 4.7× as long as ovipositor sheath.

Relative measurements: HW 12, FV 3, FVL 6, POL 2, AOL 3, OOL 1, OCL 1, POD 1, AOD 1, EL 8, EW 5, MS 2, SL 7, SW 3, FWL 36, FWW 17, OL 16, GL 3.4, MT 12.

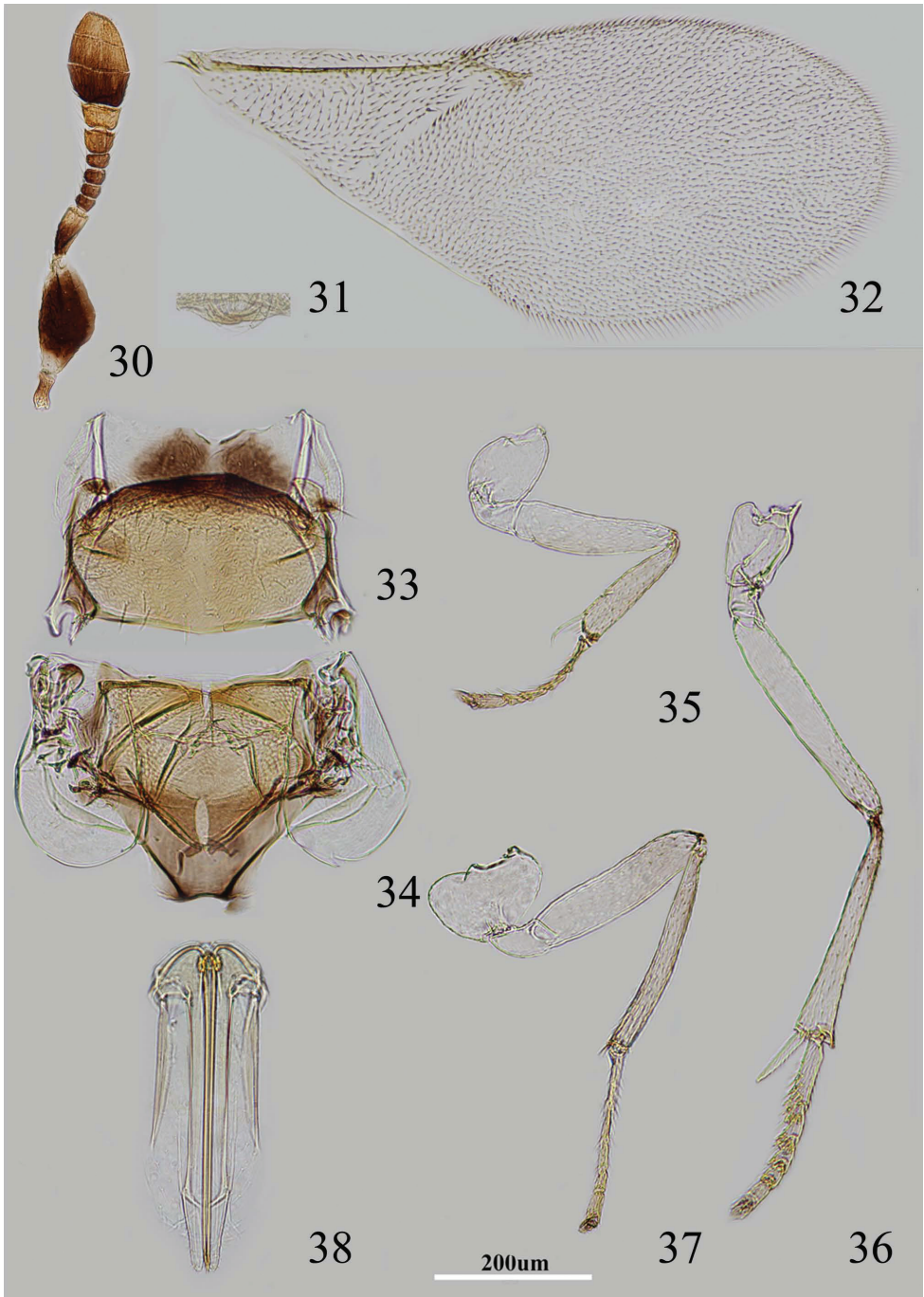
Male. Unknown.

Host. *Ceroplastes* sp. on *Pinus*.

Distribution. China (Guangxi).

Etymology. The species is named after Professor Sanan Wu, who helped to identify many hosts of Encyrtidae.

Diagnosis. Antenna with radicle very pale brown; scape mostly black, only extreme base and apex white, about 2.3× as long as broad; legs mainly pale brown-yellow; ovipositor slightly exserted, about 4.7× as long as ovipositor sheath. This species is similar to *M. fuscicapus* in colour and size. It can be separated from the latter as follows: scape about 2.3× as long as broad (in *fuscicapus*, scape about 2× as long as broad); mid and hind tibiae immaculate (Fig. 36), at most with a fuscus spot near base of mid tibiae (in *fuscicapus* mid and hind tibiae with distinct dark brown marking).



Figures 30–38. *Metaphycus wui* sp. n. Female: **30** antenna **31** palpal formula **32** fore wing **33** mesoscutum **34** scutellum **35** fore leg **36** mid leg **37** hind leg **38** ovipositor.

***Metaphycus stylatus* sp. n.**

urn:lsid:zoobank.org:act:B8D8DF2C-283E-447F-9776-E361F4A669C0

http://species-id.net/wiki/Metaphycus_stylatus

Figs 39–47

Holotype. ♀, China, Beijing: 2011.VII.1 (IZCAS).**Paratypes.** 2♀♀, same as holotype (IZCAS).

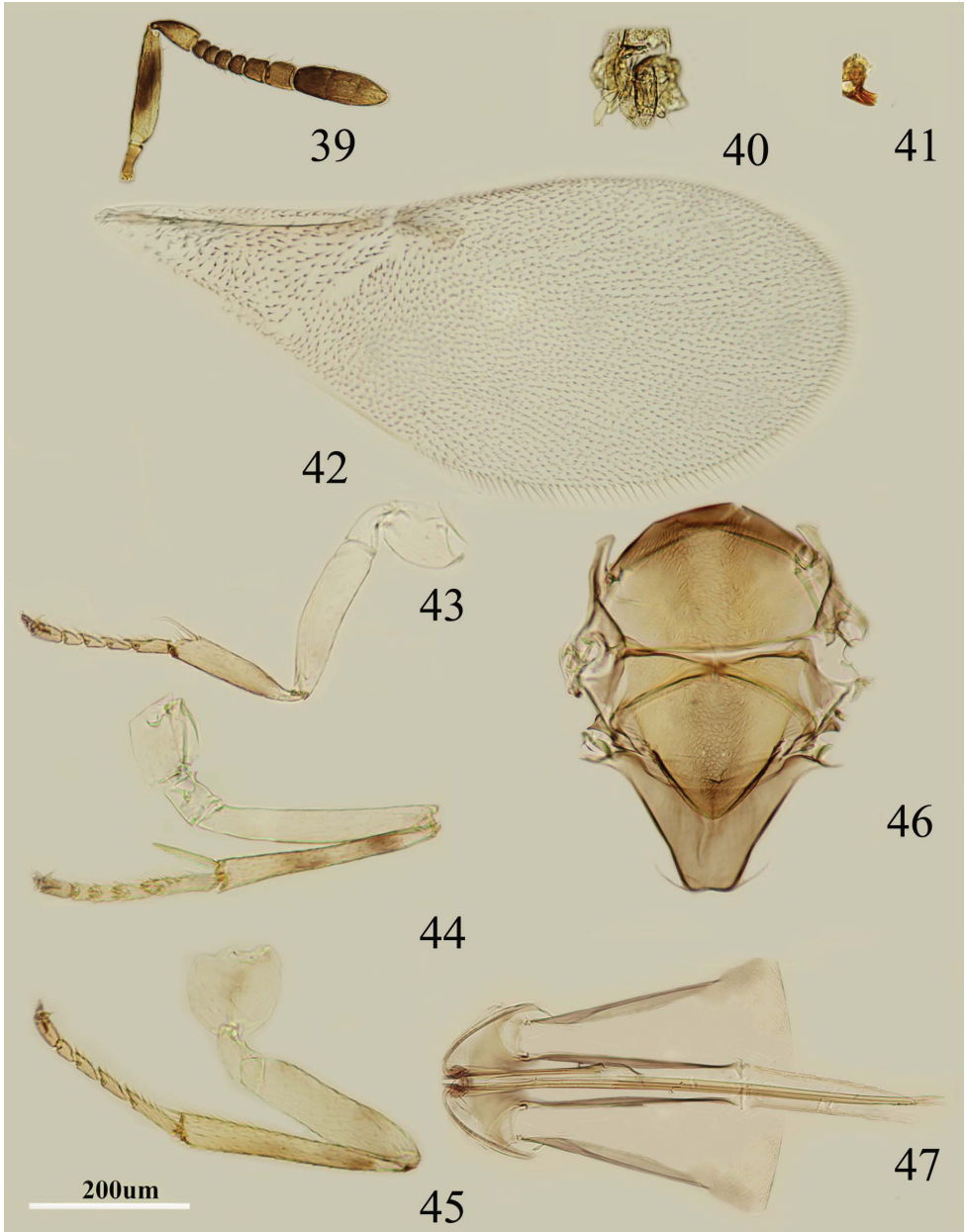
Female: Body length, including ovipositor about 0.8mm. Frontoververtex orange; orange in ocellar area, orange between occipital margin and posterior ocelli; gena with a fairly broad, oblique, pale brown-yellow from occiput to base of mandible; mouth margin narrowly pale brown below torulus; rest of head, except occiput, white; antenna (Fig. 39) with radicle yellow; scape mostly dark brown and base white; pedicel dark brown in proximal half, otherwise white, F1–F4 dark brown, F5–F6 pale brown-grey, clava dark brown, becoming slightly paler towards apex, apex paler brown; occiput with a large dark brown area above foramen, rest white; neck of pronotum pale black, posterior margin brown, lateral spots relatively large and distinct, rest white; dorsum of thorax yellow-brown; sides and posterior margin of mesoscutum and axillae inconspicuously bordered brown; setae translucent yellow, silvery in most lights; tegula white and apex grey-brown; metanotum dark brown; mesopleuron pale yellow; prosternum and mesosternum white; legs (Figs 43–45) mainly pale yellow but tibiae at knees narrowly dark brown, mid and hind tibiae with a pair of dark brown rings at about 0.2× and 0.5×; fore wing (Fig. 42) hyaline and with linea calva interrupted, venation yellow-brown; hind wing hyaline; propodeum medially brown, laterally yellow; gaster dorsally brown, sides and venter white; ovipositor sheath yellow.

Head with polygonally reticulate sculpture and mesh size slightly less than that of one eye facet; ocelli forming an angle of about 60°; eye not quite reaching occipital margin, separated by one diameter of a facet; eye margins subparallel with frontoververtex slightly wider anteriorly; scrobes shallow and U-shaped; antenna with scape about 5.5× as long as broad; funicle with F1–F4 smallest, subequal and transverse, F5 and F6 largest, subequal; linear sensilla only on F5 and F6; clava 3-segmented, its apex rounded; mandible relatively broad with three subequal, apical teeth (Fig. 41); palpal formula 2-2 (Fig. 40), notaular lines reaching about 0.6× across mesoscutum (Fig. 46); fore wing venation and setation as in Fig. 42; ovipositor (Fig. 47) strongly exerted, the exerted part about 2.6× as long as mid tibial spur, ovipositor length about 2.8× as long as ovipositor sheath.

Relative measurements: HW 11, FV 4, FVL 5, POL 2, AOL 2, OOL 1, OCL 1, POD 1, AOD 1, EL 7, EW 4, MS 3, SL 5.5, SW 1, FWL 31, FWW 12, HWL 20, HWW 3.5, OL 15, GL 5.4, MT 9.

Male. Unknown.**Host.** Unknown.**Distribution.** China (Beijing).

Etymology. The specific epithet is derived from the latin word “stylatus” referring to the long ovipositor sheath of the new species.



Figures 39–47. *Metaphycus stylatus* sp. n. Female: **39** antenna **40** palpal formula **41** mandible **42** fore wing **43** fore leg **44** mid leg **45** hind leg **46** mesothorax **47** ovipositor.

Diagnosis. Scape mostly dark brown and base white and about 5.5× as long as broad; legs mainly pale yellow but tibiae at knees narrowly dark brown, mid and hind tibiae with a pair of dark brown rings at about 0.2× and 0.5×; gaster dorsally brown, sides and venter white; ovipositor sheath strongly exerted, the exerted

part about two thirds gaster length; ovipositor length about 2.8× as long as ovipositor sheath.

Metaphycus stylatus differs from other species studied here by the strongly exerted ovipositor sheath, which is about two thirds gaster length. In other species, the ovipositor sheath is less than one fifth the gaster length. Using the key of Guerrieri and Noyes (2000), this species runs to *M. asterolecanii* (key couplet 12). It can be separated from *asterolecanii* as follows: scape about 5.5× as long as broad; head about 3× as broad as frontovertex, and ocelli forming an angle of about 60°; ovipositor (Fig. 47) strongly exerted, about 1.7× as long as mid tibia (in *asterolecanii*, scape about 3× as long as broad; head about 4× as broad as frontovertex, and ocelli forming an angle of clearly less than 60°; ovipositor hidden and nearly as long a mid tibia).

***Metaphycus ericeri* Trjapitzin, 1967**

http://species-id.net/wiki/Metaphycus_ericeri

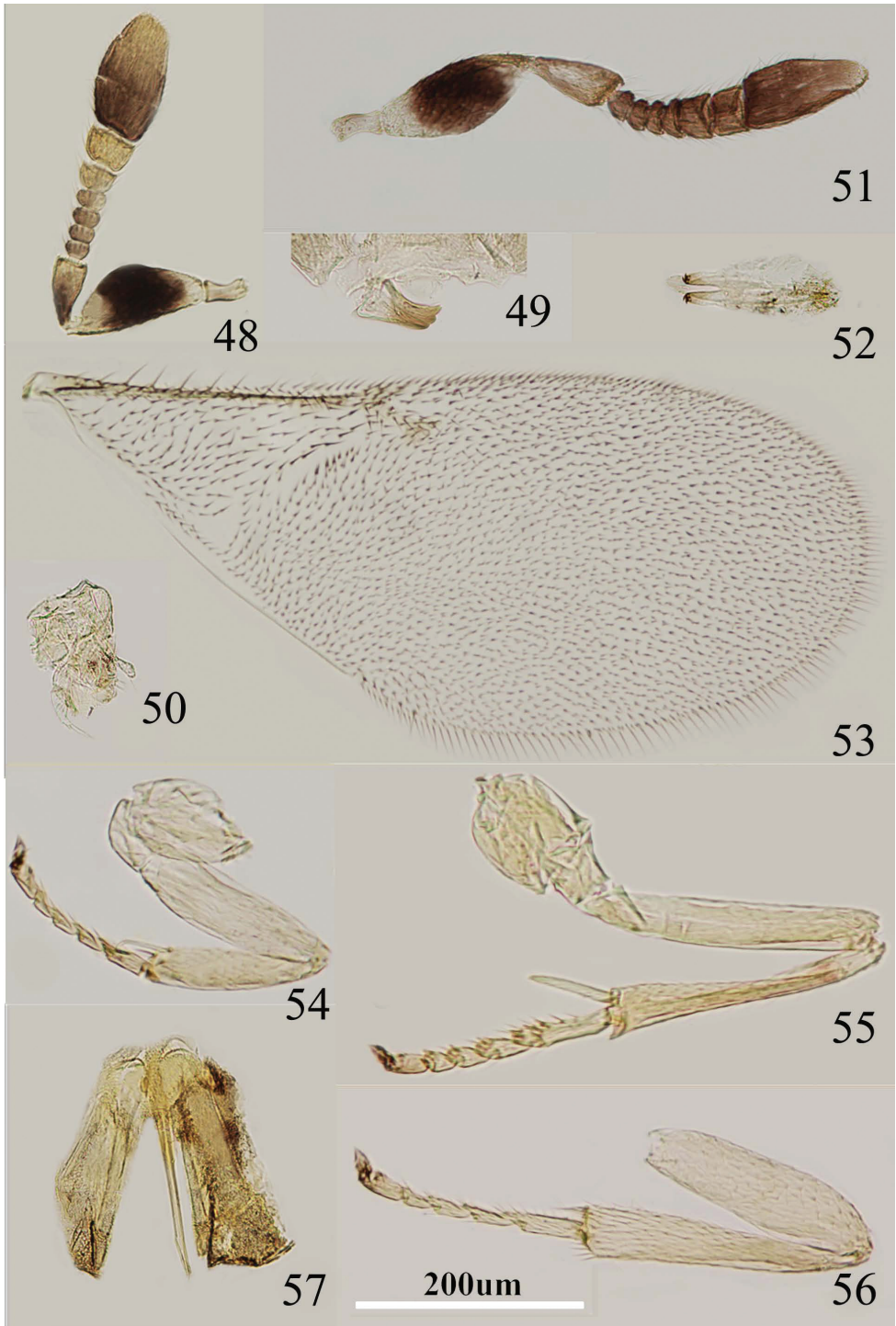
Figs 48–57

Metaphycus ericeri Trjapitzin, 1967: 185. Holotype ♀, Russia–Primor'ye Kray.

Metaphycus ericeri Trjapitzin: Trjapitzin 1975: 10; Trjapitzin 1989: 345.

Female. Body length, including ovipositor about 0.8 mm. Frontovertex pale orange; pale brown in ocellar area, yellow between occipital margin and posterior ocelli; immaculate from occiput to base of mandible; rest of head, except occiput, white; antenna (Fig. 48) with radicle brown-yellow; scape with both faces blackish, only extreme apex and extreme distal yellow, dorsal margin pale black; pedicel dark brown in proximal half, otherwise white; F1–F4 dark brown, F5–F6 white, clava dark brown, becoming paler towards apex, apex paler brown; occiput with a large dark brown area above foramen, rest white; neck of pronotum dark brown, posterior margin translucent white, lateral spots relatively large and distinct, rest white; dorsum of thorax orange; sides and posterior margin of mesoscutum and axillae inconspicuously bordered pale brown; setae translucent orange, silvery in most lights; tegula white with apex pale grey-brown; metanotum orange; mesopleuron pale yellow; prosternum and mesosternum pale yellow; legs (Figs 54–56) mainly pale yellow and mid tibia with a faint brown marking; fore wing (Fig. 53) hyaline and with linea calva interrupted, venation yellow-brown; hind wing hyaline; propodeum medially orange; gaster mostly orange but brown dorsally from cercal plates to near apex, ovipositor sheath yellow.

Head with polygonally reticulate sculpture and mesh size slightly less than that of one eye facet; ocelli forming an angle of about 50°; eye not quite reaching occipital margin, separated by much less than diameter of a facet; frontovertex not parallel-sided, becoming slightly broader anteriorly from the narrowest point which is slightly in front of posterior ocelli; scrobes shallow and U-shaped; antenna with scape about 2.3× as long as broad; funicle with F1–F4 smallest, subequal and transverse, F5 a little larger but transverse, F6 largest, linear sensilla only on F5 and F6; clava 3-segmented, its apex



Figures 48–57. *Metaphycus ericeri* Trjapitzin Female: 48 antenna 49 mandible 50 palpal formula 53 fore wing 54 fore leg 55 mid leg 56 hind leg 57 ovipositor. Male: 51 antenna 52 genitalia.

more or less rounded but with a short slightly oblique truncation; mandible relatively broad with three subequal, apical teeth (Fig. 49); palpal formula 2-2 (Fig. 50), thorax dorsally with notaular lines present only anteriorly; fore wing venation and setation as in Fig. 53; ovipositor (Fig. 57) hardly exerted, about 5.4× as long as ovipositor sheath.

Relative measurements: HW 14, FV 4, FVL 9, POL 2, AOL 3, OOL 1, OCL 1, POD 1, AOD 1, EL 8, EW 6, MS 5, SL 7, SW 3, FWL 36, FWW 15, HWL 24, HWW 5, OL 8, GL 1.5, MT 13.

Male. Length 0.65–0.70mm, almost identical to female but for genitalia and antenna, coloration of gaster. Pedicel white and with clava relatively more slender and solid, funicle brown (Fig. 51); genitalia (Fig. 52) with digitus long and slender apically with two hooks; aedeagus sharply pointed at apex.

Distribution. China (Liaoning), Russia.

Host. *Ericerus pela*.

Material examined. China: 3 ♀♀, 6 ♂♂, Liaoning, Xiuyan, 2010.VI, Coll. Y. Q. Xi (IZCAS); 2 ♀♀, 1 ♂, Liaoning, Shenyang, 2009.VI.12, Coll. Y. Q. Xi (IZCAS).

Diagnosis. Scape about 2.3× as long as broad; legs mainly pale yellow and mid tibia with a faint brown marking; gaster mostly orange but brown dorsally from cercal plates to near apex, ovipositor sheath yellow; ovipositor about 5.4× as long as ovipositor sheath.

This species is similar to *M. helvolus* in appearance. It can be separated from *M. helvolus* as follows: dorsal margin of scape pale black; linear sensilla on F5 and F6 (in *helvolus* dorsal margin of scape yellowish, linear sensilla absent on F5), head is about 3.5× as broad as frontovertex, the ovipositor about 0.6× as long as mid tibia (in *helvolus* head about 3× as broad as frontovertex, and the ovipositor about as long as mid tibia).

***Metaphycus nadius* (Walker, 1838)**

http://species-id.net/wiki/Metaphycus_nadius

Figs 58–62

Encyrtus nadius Walker, 1838: 423. Lectotype ♀ (BMNH, examined), designated by Bouček and Graham (1978: 230), England.

Encyrtus syllaesus Walker, 1838b: 426. Lectotype ♂ (designated by Bouček and Graham 1978: 230), England, BMNH, examined. Synonymized by Guerrieri and Noyes 2000: 158.

Aphycus pinicola Mercet, 1917: 135. Lectotype ♀ (designated by Noyes 1981: 168), Spain, IIEEM. Synonymized with *nadius* by Guerrieri and Noyes 2000: 158.

Aphycus (*Euaphycus*) *pinicola* Mercet; Mercet 1921: 205.

Euaphycus intermedius Mercet, 1925: 24. Synonymized with *nadius* by Guerrieri and Noyes 2000: 158.

Euaphycus callunae Alam, 1957: 433. Holotype ♀, England, BMNH. Synonymized with *nadius* by Guerrieri and Noyes 2000: 158.

Euaphycus duplus Chumakova, 1961: 324. Synonymized with *nadius* by Guerrieri and Noyes 2000: 158.

Metaphycus intermedius (Mercet): Trjapitzin 1975: 8.

Metaphycus callunae (Alam); Trjapitzin 1975: 13.

Metaphycus pinicola (Mercet); Trjapitzin 1975: 14.

Metaphycus duplus (Chumakova); Trjapitzin 1975: 14.

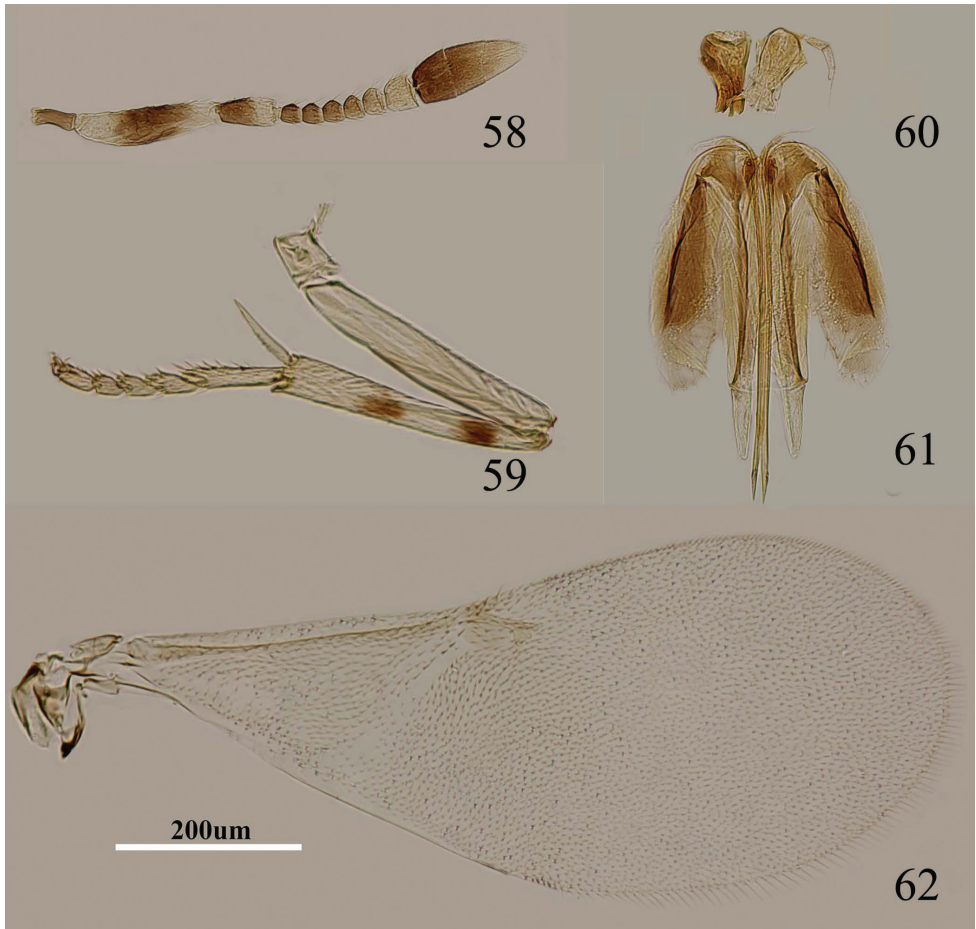
Metaphycus nadius; Bouček and Graham 1978: 230; Trjapitzin 1989: 246; Li and Xu 2006: 112–113.

Metaphycus syllaeus (Walker); Bouček and Graham 1978: 230.

Female. Body length, including ovipositor, 0.7–0.8mm. Frontoververtex dark orange; brown in ocellar area, brown between occipital margin and posterior ocelli; dark brown from occiput to base of mandible; mouth margin narrowly dark brown below torulus; rest of head, except occiput, brown; antenna (Fig. 58) with radicle dark brown; scape with both faces dark brown and base of scape white; pedicel in proximal half dark brown, distal half white, dark brown area extending slightly towards apex externally and internally; F1–F4 pale brown, F5–F6 white, clava dark brown, becoming slightly paler towards apex, apex paler brown; occiput with a large dark brown area above foramen; neck of pronotum black, posterior margin translucent brown; dorsum of thorax dark brown; sides and posterior margin of mesoscutum and axillae inconspicuously bordered brown; setae translucent pale brown, silvery in most lights; tegula pale brown with apex pale darker; metanotum dark brown; mesopleuron pale brown; prosternum and mesosternum brown; legs (Fig. 59) mainly pale yellow but tibiae at knees narrowly dark brown and each with a pair of dark brown rings at about 0.2× and 0.5× (fore tibiae at about 0.5×); fore wing (Fig. 62) hyaline with a small infusate area beneath stigmal vein, and with linea calva interrupted; venation yellow-brown; hind wing hyaline; propodeum dark brown; gaster dorsally and venter dark brown, sides very pale brown to white; ovipositor sheath pale brown.

Head with polygonally reticulate sculpture and mesh size slightly less than that of one eye facet; ocelli forming an angle of about 45°; eye not quite reaching occipital margin, separated by much less than diameter of a facet; eye margins subparallel; scrobes shallow and U-shaped; antenna with scape about 4.5× as long as broad; funicle with F1–F4 smallest, subequal and transverse, F5 a little larger but transverse, F6 largest and quadrate; linear sensilla only on F6; clava 3-segmented, its apex more or less rounded but with a short slightly oblique truncation; mandible relatively broad, with three subequal, apical teeth; palpal formula 2-2 (Fig. 60), gaster with ovipositor slightly exserted, notaular lines reaching about 0.7× across mesoscutum; fore wing venation and setation as in Fig. 62; ovipositor (Fig. 61) clearly exserted, about 4.3× as long as ovipositor sheath.

Relative measurements: HW 12, FV 3, FVL 4, POL 1.5, AOL 2, OOL 1, OCL 0.5, POD 1, AOD 1, EL 9, EW 5, MS 3, SL 6, SW 2, FWL 32, FWW 15, HWL 22, HWW 4, OL 11, GL 2.5, MT 10.



Figures 58–62. *Metaphycus nadius* (Walker) Female: **58** antenna **59** mid leg **60** palpal formula **61** ovipositor **62** fore wing.

Male. Almost identical to female in general structure, habitus and coloration except for solid clava, genitalia.

Hosts. *Asterolecanium* sp.; *Asterolecanium minus*; *Chionaspis pinifoliae*; *Diaspidiotus bavaricus*; *D. gigas*; *D. zonatus*; *Phenacaspis pinifoliae*; *Quadraspidiotus bavaricus*; *Quadraspidiotus gigas*; *Quadraspidiotus perniciosus*; *Quadraspidiotus zonatus*; *Sphaerolecanium prunastri*.

Distribution. China (Heilongjiang, Inner Mongolia, Qinghai); Croatia, Czech Republic, England, Finland, France, Greece, Hungary, Italy, Netherlands, Poland, Portugal, Wales, Russia, Slovakia, Spain, United Kingdom.

Material examined. China: 1♀, Inner Mongolia: Darhan Maomingan Allied county, 1979.VIII.1 (IZCAS); 7♀♀, 13♂♂, Qinghai Geermu, 2007.VII.4–5 (IZCAS), England: 1♀, 1985, Coll. S. M. Alam (BMNH); 1♀, Richmond Park, Surrey, 1996.VII.18, Coll. J. Noyes (BMNH).

Diagnosis. Antenna with radicle dark brown; scape with both faces dark brown and base of scape white; scape about 4.5× as long as broad; legs mainly pale yellow but tibiae at knees narrowly dark brown and each with a pair of dark brown rings at about 0.2× and 0.5× (fore tibia at about 0.5×); fore wing hyaline with a small infusate area beneath stigmal vein. The female of *M. nadius* can be identified reliably from other Chinese species in this group by the brown mark under the stigmal vein and the two rings on the mid tibia, antenna with linear sensilla on F6 and clava only. According to Guerrieri and Noyes (2000), it is also similar to *M. hubai*, both with a small infusate area below marginal and stigma veins.

***Metaphycus fusiscapus* sp. n.**

urn:lsid:zoobank.org:act:A309BC1D-C062-460D-B0CA-5BDB716D77F2

http://species-id.net/wiki/Metaphycus_fusiscapus

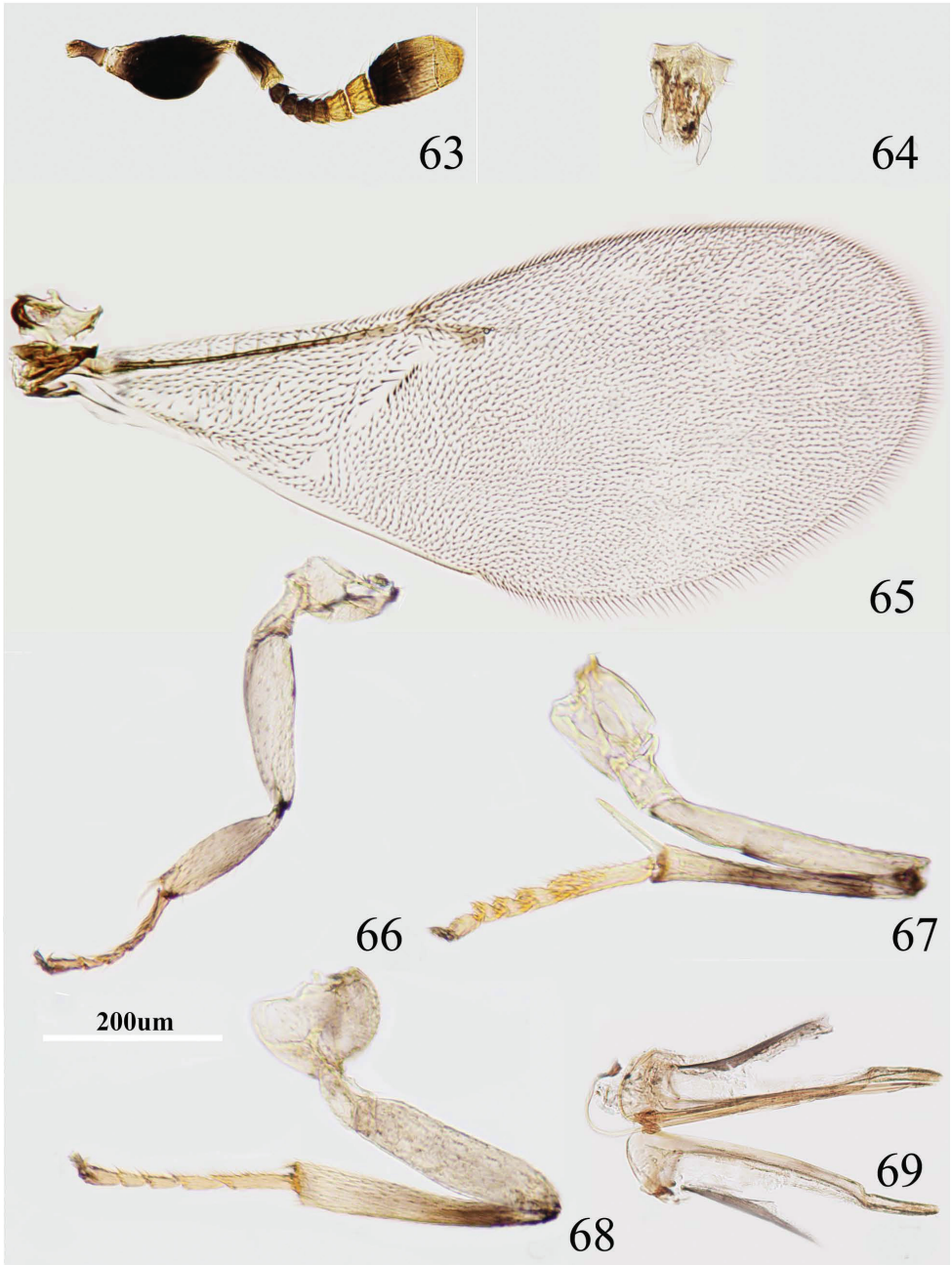
Figs 63–69

Holotype. ♀, China, Sichuan, Chengdu: 2012.VI.30, ex. *Ceroplastes floridensis*, coll. J. Deng (IZCAS).

Paratypes. 3♀♀, same as holotype. 1 ♀, Fujian, Shaowu, 2012.IV.17, ex. *Ceroplastes floridensis*, coll. A. K. Deng (IZCAS).

Female: Body length, including ovipositor, 0.9–1mm. Frontovortex orange; very pale brown in ocellar area, pale brown between occipital margin and posterior ocelli; gena with brown-grey; mouth margin narrowly pale brown below torulus; rest of head, except occiput, white; antenna (Fig. 63) with radicle dark brown; scape with both faces black, dorsal margin black, extreme apex white; pedicel in proximal four fifths dark brown, distal one fifth white, dark brown area extending slightly towards apex externally and internally; F1–F3 dark brown, F4 pale brown to pale yellow, F5–F6 white, clava proximal half dark brown, becoming white towards apex; neck of pronotum dark brown, posterior margin translucent brown, lateral spots relatively large and distinct, rest white; dorsum of thorax dark orange; sides and posterior margin of mesoscutum and axillae inconspicuously bordered brown; scutellum slightly darker in center; setae translucent pale brown, silvery in most lights; tegula white with apex brown; metanotum black; mesopleuron white; prosternum and mesosternum pale brown; legs (Figs 66–68) with insides white, and outsides very pale brown, coxae white, but tibiae at knees narrowly dark brown and fore tibia with faint brown rings, mid and hind tibiae with a pair of dark brown rings at about 0.2× and 0.5×; fore wing (Fig. 65) hyaline and venation brown; hind wing hyaline, and with linea calva interrupted; propodeum medially black, laterally white; gaster dorsally black, sides and venter white; ovipositor sheath pale brown.

Head ocelli forming an angle of about 40°; eye not quite reaching occipital margin, separated by much less than diameter of a facet; frontovortex parallel-sided; scrobes shallow and U-shaped; antenna (Fig. 63) with scape about 2× as long as broad; funicle with F1–F4 smallest, subequal and transverse, F5 a little larger, F6 largest and quadrate;



Figures 63–69. *Metaphycus fusiscapus* sp. n. Female: **63** antenna **64** palpal formula **65** fore wing **66** fore leg **67** mid leg **68** hind leg **69** ovipositor.

linear sensilla only on F5 and F6; clava 3-segmented, its apex more or less rounded but with a short slightly oblique truncation; mandible relatively broad with three subequal, apical teeth; palpal formula 2-2 (Fig. 64). notaular lines reaching about 0.5× across

mesoscutum; fore wing venation and setation as in Fig. 65; ovipositor (Fig. 69) hardly exerted, about $4.1\times$ as long as ovipositor sheath.

Relative measurements: HW 11, FV 4, FVL 6, POL 2, AOL 2.5, OOL 1, OCL 1, POD 1, AOD 1, EL 7, EW 5, MS 3, SL 6, SW 3, FWL 40, FWW 15, HWL 22, HWW 6, OL 14, GL 3.5, MT 12.

Male. Unknown.

Host. *Ceroplastes floridensis*.

Distribution. China (Sichuan, Fujian).

Etymology. This specific epithet of this new species is referring to the dark brown scape.

Diagnosis. Scape with both faces black, dorsal margin black, extreme apex white, and about $2\times$ as long as broad; legs (Figs 66–68) with inner sides white, and outer sides very pale brown, coxae white, but tibiae at knees narrowly dark brown and fore tibia with faint brown rings, mid and hind tibiae with a pair of dark brown rings at about $0.2\times$ and $0.5\times$; ovipositor hardly exerted, about $4.1\times$ as long as ovipositor sheath.

Using the key of Guerrieri and Noyes (2000), *M. fuscicapus* runs to *M. pretiosus* (key couplet 8), but can be separated from the latter by scape about $2\times$ as long as broad and head $4.1\times$ as broad as frontovertex (in *pretiosus*, scape about $4\times$ as long as broad, head $3\times$ as broad as frontovertex). Using the key of Zeya and Hayat (1993), this species goes to *M. agarwali*. Both of these two species having two dark bands on mid tibiae and scape about $2\times$ as long as broad. It can be separated from *M. agarwali* as follows: dorsal margin of scape black only base apex white, F1–F4 subequal and F5 distinctly larger (in *M. agarwali*, scape dorsal margin white, and F1–F5 subequal). Both of the two species are distributed in Asia, perhaps they are closely related. In China, *M. fuscicapus* is very similar to *M. wui* (see comments under *M. wui*).

***Metaphycus fusiformis* sp. n.**

urn:lsid:zoobank.org:act:7199B2CC-9C8B-4DB7-8680-CE252E87C303

http://species-id.net/wiki/Metaphycus_fusiformis

Figs 70–76

Holotype. 1♀, China, Shanxi, Li Mt.: 2006.VIII.1, Coll. D. Liu (IZCAS).

Paratypes. 1♀, Beijing, Mentougou, 2011.VIII.30 (IZCAS); 2♀♀, Beijing, Changping, 2009.VIII.7, Coll. F. Yuan (IZCAS), 2♀♀, Beijing, Changping, 2009.VIII.7, Coll. Q. T. Wu (IZCAS), 1♀, Hainan, Danzhou, 2005.I, Coll. T. X Zhang (IZCAS); 1♀, Hainan, Danzhou, 2007.V.16, Coll. Y. Z. Zhang (IZCAS).

Female: Body length, including ovipositor about 0.8–0.9mm. Frontoververtex orange; orange in ocellar area, very pale brown to orange between occipital margin and posterior ocelli; gena with a fairly broad, oblique, brown mark from occiput to base of mandible; mouth margin narrowly pale brown below torulus; rest of head, except occiput, white; antenna (Fig. 70) with radicle dark brown; scape with both faces dark brown, blackish, dorsal margin narrowly pale yellow, extreme apex white; pedicel base

at most two thirds dark brown, white distally, dark brown area extending slightly towards apex externally and internally; F1–F3 dark brown, F4 brown, F5–F6 white-yellow, clava in proximal 2/3 dark brown, becoming slightly paler towards apex, apex yellow; occiput with a large dark brown area above foramen, rest pale yellow; neck of pronotum dark brown, posterior margin translucent yellow, lateral spots relatively large and distinct, rest orange; dorsum of thorax orange; sides and posterior margin of mesoscutum and axillae conspicuously bordered brown; setae translucent pale brown, silvery in most lights; tegula white with apex pale grey-brown; metanotum brown; mesopleuron pale yellow; prosternum yellow and mesosternum white; legs (Fig. 73–75) mainly white but tibiae at knees narrowly dark brown and mid and hind tibiae with a pair of dark brown rings at about 0.2× and 0.5×; fore wing (Fig. 72) hyaline, a faintly infusate area below marginal and stigmal veins, and with linea calva interrupted, venation yellow-brown; hind wing hyaline; propodeum medially brown, laterally white; gaster mostly brown but dark brown dorsally from cercal plates to near apex, sides and venter white; ovipositor sheath yellow.

Head with polygonally reticulate sculpture and mesh size slightly less than that of one eye facet; ocelli forming an angle of about 35°; eye not quite reaching occipital margin, separated by much less than diameter of a facet; frontovertex subparallel-sided; scrobes shallow and U-shaped; antenna (Fig. 70) with scape about 2.4× as long as broad; funicle with F1–F4 smallest, subequal and transverse, F5 a little larger but transverse, F6 largest and quadrate, linear sensilla only on F6, clava 3-segmented, its apex more or less rounded but with a short slightly oblique truncation; mandible relatively broad with three subequal, apical teeth; palpal formula 2-2 (Fig. 71); notaular lines reaching about 0.6× across mesoscutum; fore wing venation and setation as in Fig. 72; ovipositor (Fig. 76) slightly exerted, about 5.2× as long as ovipositor sheath, second valvifer without subapical setae.

Relative measurements: HW 14, FV 4, FVL 8, POL 1.5, AOL 3, OOL 1, OCL 1, POD 1, AOD 1, EL 8, EW 6.5, MS 4, SL 6, SW 2.5, FWL 35, FWW 14, OL 10, GL 2, MT 11.

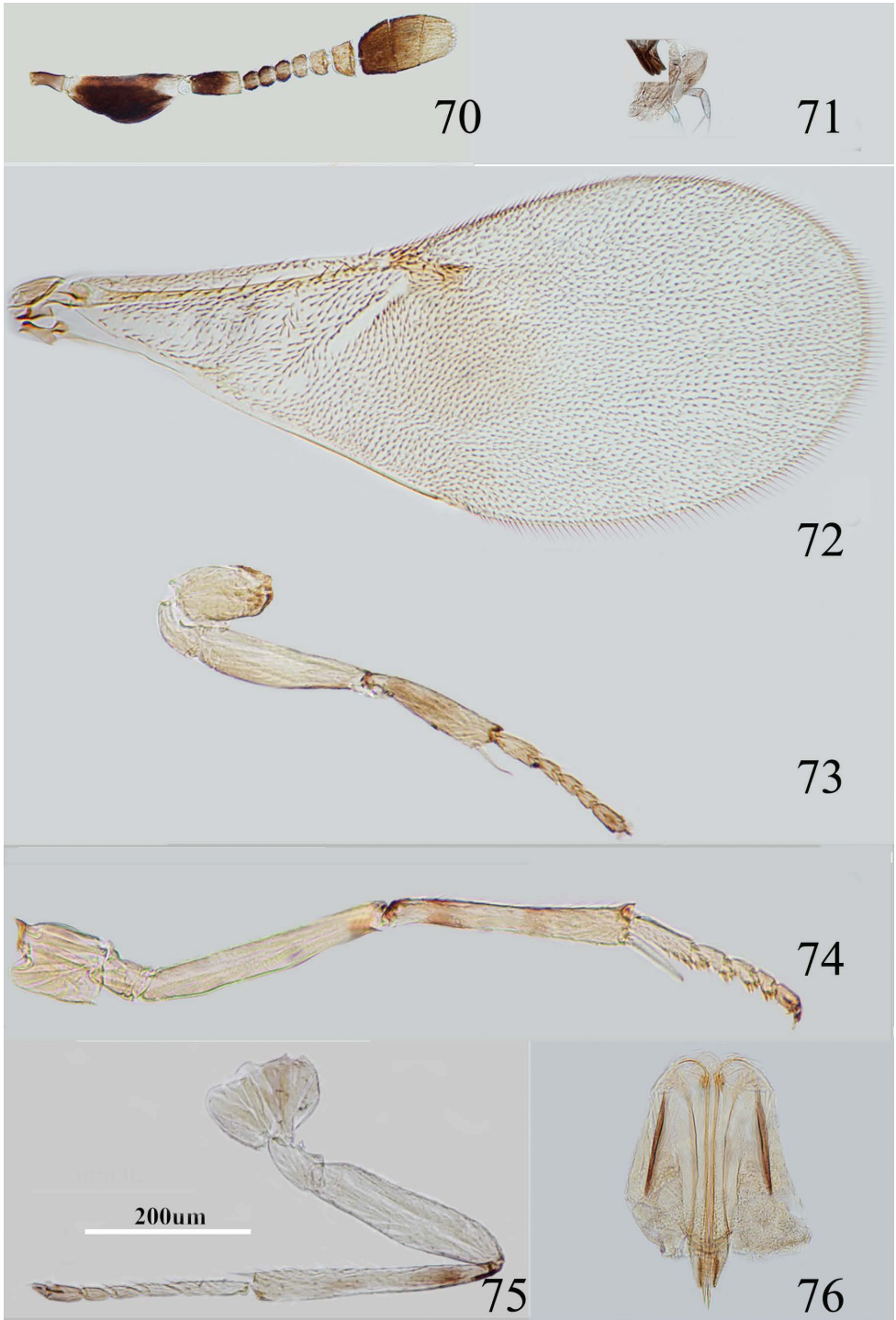
Male. Unknown.

Host. Unknown.

Distribution. China (Beijing, Hainan, Shanxi).

Etymology. The species name ‘fusiformis’ is derived from the infusate area of the fore wing.

Diagnosis. Scape with both faces dark brown, blackish, dorsal margin narrowly pale yellow, extreme apex white and about 2.4× as long as broad; fore wing (Fig. 72) hyaline, a faintly infusate area below marginal and stigmal veins. Using the key of Guerrieri and Noyes (2000), this species runs to couplet 10 and is similar to *M. ibericus* in having a uniformly weakly infusate fore wing. It can be separated from the latter as follows: dorsal margin of scape pale orange, not marked brown medially and 2.4× as long as broad (in *ibericus*, dorsal margin of scapae marked brown medially and 3× as long as broad); ovipositor about as long as mid tibia (in *ibericus* with ovipositor about 0.8× as long as mid tibia).



Figures 70–76. *Metaphycus fusiformis* sp. n. Female: **70** antenna **71** palpal formula **72** fore wing **73** fore leg **74** mid leg **75** hind leg **76** ovipositor.

***Metaphycus xujiangi* Özdikmen, 2011**

http://species-id.net/wiki/Metaphycus_xujiangi

Figs 77–83

Metaphycus tamakatakaigara Jiang 1982: 7: 182; Jiang 1986: (3):14. Misidentified.

Metaphycus ericeri Xu & Jiang 1990: 203. Holotype ♀, China, ZJU & SCU; Jiao and Zhao 1999: 166–171.

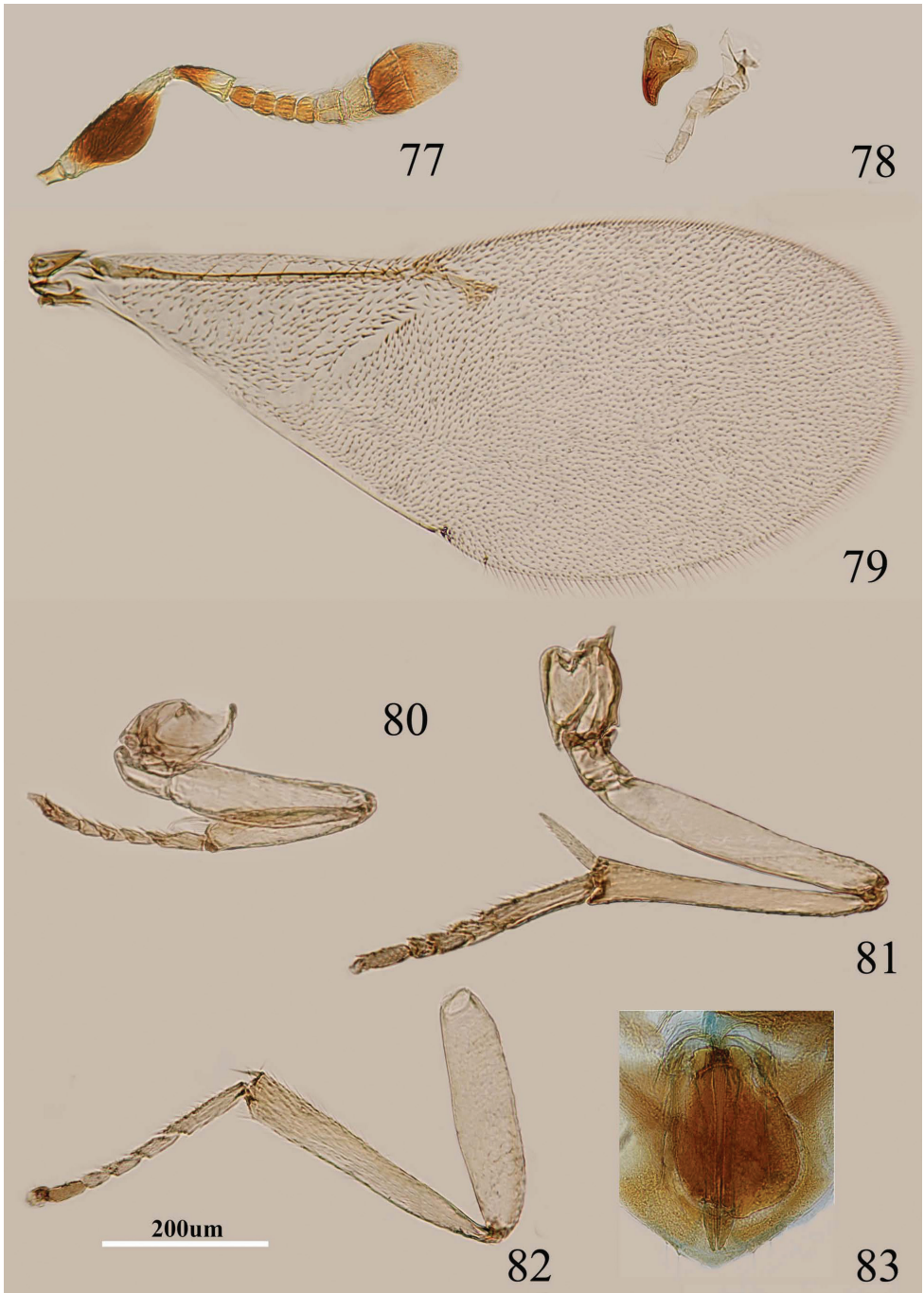
Metaphycus xujiangi Özdikmen, 2011: 802. Replacement name for *Metaphycus ericeri* Xu & Jiang nec Trjapitzin (1967).

Female. Body length, including ovipositor about 1.1 mm. Frontoververtex orange to dark orange; orange in ocellar area, orange between occipital margin and posterior ocelli; immaculate from occiput to base of mandible; rest of head, except occiput, yellow-white; antenna (Fig. 77) with radicle yellow; scape with both faces blackish, only extreme apex and extreme distal yellow, dorsal margin black; pedicel dark brown in proximal half and apex white; F1–F4 brown, F5–F6 white, clava dark brown, becoming paler towards apex, apex white; occiput with dark brown area above occipital foramen, rest white; neck of pronotum dark brown, posterior margin translucent white, lateral spots relatively small and undistinct, rest white; dorsum of thorax orange; sides and posterior margin of mesoscutum and axillae bordered brown; setae translucent yellow, silvery in most lights; tegula white; metanotum pale brown; mesopleuron yellow; prosternum and mesosternum pale yellow; legs (Figs 80–82) mainly pale yellow; fore wing (Fig. 79) hyaline, and with linea calva interrupted, venation dark yellow; hind wing hyaline; propodeum medially dark orange; gaster dorsally pale brown, becoming paler towards apex, side and venter white; ovipositor sheath yellow.

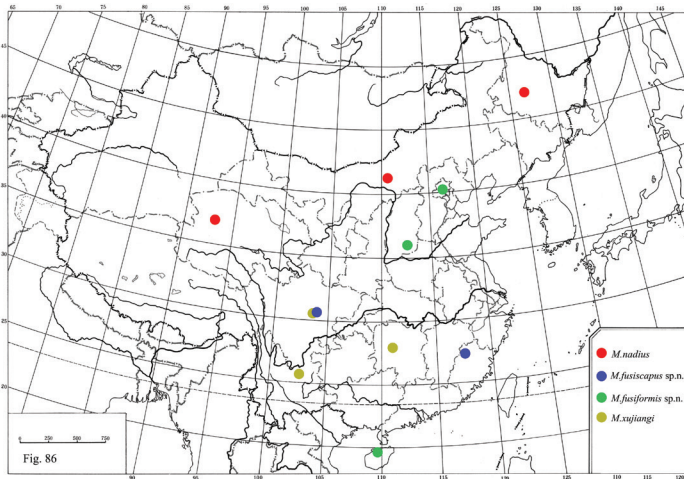
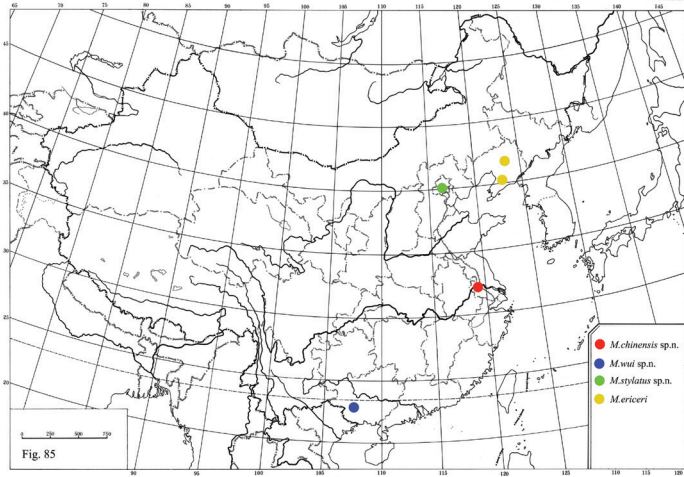
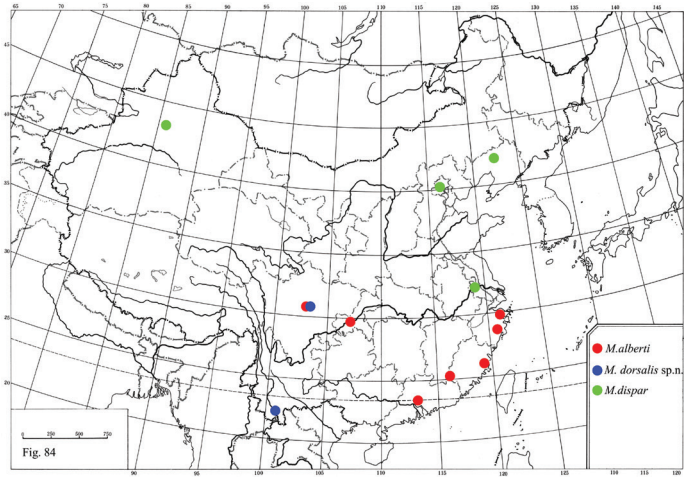
Ocelli forming an angle of about 50°; eye not quite reaching occipital margin, separated by much less than diameter of one facet; frontoververtex subparallel-sided, becoming slightly broader anteriorly from the narrowest point which is slightly in front of posterior ocelli; scrobes shallow and U-shaped; antenna with scape about 2–2.5× as long as broad; funicle with F1–F4 smallest, subequal, F4 transverse, F5 a little larger but transverse, F6 largest; clava 3-segmented, its apex more or less rounded and with a short slightly oblique truncation; mandible relatively broad with three subequal, apical teeth; palpal formula 2-2 (Fig. 78), notaular lines reaching about 0.6× across mesoscutum; fore wing venation and setation as in Fig. 79; ovipositor (Fig. 83) hardly exerted, length about 5.4× as long as ovipositor sheath.

Relative measurements: HW 15.5, FV 3, FVL 7, POL 2, AOL 3, OOL 1, OCL 1, POD 2, AOD 2, EL 9, EW 6, MS 4, SL 7, SW 3, FWL 45, FWW 21, HWL 30, HWW 6, OL 11, GL 2, MT 15.

Male. (length 0.8–1.33 mm). Thorax black-brown, ocellar area black-brown, antenna yellow-brown, clava solid and as long as F3 to F6. Digitus of genitalia apically with two hooks; aedeagus robust, length about 3× as long as broad. (Xu and Jiang 1990).



Figures 77–83. *Metaphycus xujiangi* Özdikmen. Female: **77** antenna **78** palpal formula and mandible **79** fore wing **80** fore leg **81** mid leg **82** hind leg **83** ovipositor.



Figures 84–86. Distribution of *Metaphycus* spp. in China.

Host. *Ericerus pela*.

Distribution. China (Hunan, Sichuan, Yunnan).

Material examined. China: 9♀♀, Sichuan, E'mei Mt., 1963.X, Coll. D. X Liao (IZCAS).

Diagnosis. Antenna with radicle yellow; scape with both faces blackish, only extreme apex and extreme distal yellow, dorsal margin black, scape about 2–2.5× as long as broad; ovipositor hardly exerted, length about 5.4× as long as ovipositor sheath. Jiang (1982) misidentified this species as *M. tamakatakaigara*, and Xu and Jiang 1990 described it as a new species. *Metaphycus xujiangi* is very similar to *M. ericeri*. It can be separated from *M. ericeri* as follows: head is about 5× as broad as frontovertex, POD=POL and the ovipositor about 0.7× as long as mid tibia (in *M. ericeri*, the head is about 3.5× as broad as frontovertex, 2POD=POL and the ovipositor about 0.6× as long as mid tibia).

Acknowledgements

This project was supported by the National Natural Science Foundation of China (NSFC grant no. 31071950, 31272350), the Chinese Academy of Sciences (KSCX2-YW-NF-02) and partially by the Department of Science and Technology of China (2012FY111100). Special thanks are due to Dr. John S. Noyes (BMNH) for his help in preparing this paper.

References

- Alam SM (1957) Taxonomy of some encyrtid parasites (Hymenoptera, Chalcidoidea) of British scale insects. Transactions of the Royal Entomological Society of London 109(15): 421–466. doi: 10.1111/j.1365-2311.1957.tb00333.x
- Annecke DP, Mynhardt MJ (1971) The species of the *zebratus*-group of *Metaphycus* Mercet (Hym., Encyrtidae) from South Africa, with notes on some extra-limital species. Revue de Zoologie et de Botanique Africaines 83: 322–360.
- Annecke DP, Mynhardt MJ (1972) The species of the *insidiosus*-group of *Metaphycus* Mercet in South Africa with notes on some extra-limital species (Hymenoptera, Encyrtidae). Revue de Zoologie et de Botanique Africaines 85: 227–274.
- Annecke DP, Mynhardt MJ (1981) The species of the *asterolecanii*-group of *Metaphycus* Mercet (Hymenoptera: Encyrtidae) from South Africa with notes on some extralimital species. Journal of the Entomological Society of Southern Africa 44(1): 1–68.
- Bouček Z, Graham MWR de V (1978) British check-list of Chalcidoidea (Hymenoptera): taxonomic notes and additions. Entomologist's Gazette 29(4): 225–235.
- Chumakova BM (1961) Parasites of injurious scale insects from Kabardino-Balkaria (Hymenoptera, Chalcidoidea). Entomologicheskoe Obozrenie 40(2): 315–338.
- Compere H (1940) The African species of *Metaphycus* Mercet. Bulletin of Entomological Research 31 (1): 7–33. doi: 10.1017/S0007485300004764

- Compere H (1947) A report on a collection of Encyrtidae with descriptions of new genera and species. University of California Publications in Entomology 8: 1–24.
- Compere H (1957) Descriptions of species of *Metaphycus* recently introduced into California and some corrections. Bollettino del Laboratorio di Entomologia Agraria ‘Filippo Silvestri’, Portici 15: 221–230.
- Compere H, Annecke DP (1960) A reappraisal of *Aphycus* Mayr, *Metaphycus* Mercet and related genera (Encyrtidae). Journal of the Entomological Society of Southern Africa 23: 375–389.
- Dang XD, Wang HZ (2002) Eleven new species of Encyrtidae (Hymenoptera) from Shaanxi province, China. Entomotaxonomia 24(4): 289–300.
- DeBach P, Rosen D (1991) Biological control by natural enemies: Cambridge University Press, Cambridge, England, 440 pp.
- De Santis L (1964) Encírtidos de la República Argentina (Hymenoptera: Chalcidoidea). Anales de la Comisión de Investigación Científica Provincia de Buenos Aires Gobernación 4: 9–422.
- Dozier HL (1926) Some new Porto Rican scale parasites (Hymenoptera: Encyrtidae). Proceedings of the Entomological Society of Washington 28: 97–102.
- Girault AA (1911) The chalcidoid parasites of the coccid *Kermes pubescens* Bogue, with descriptions of two new genera and three new species of Encyrtidae from Illinois. Canadian Entomologist 43: 168–178. doi: 10.4039/Ent43168-5
- Girault AA (1920) New serphidoid, cynipoid, and chalcidoid Hymenoptera. Proceedings of the United States National Museum 58: 177–216. doi: 10.5479/si.00963801.2332.177
- Girault AA (1932) New lower Hymenoptera from Australia and India. Private publication, Brisbane, 6pp.
- Gordh G (1979) Family Encyrtidae. Catalog of Hymenoptera in America North of Mexico. Washington DC, 890–967.
- Graham MWR de V (1988) Madeira insects: additions to the list of parasitic Hymenoptera, with some comments on problems of conservation. Boletim do Museu Municipal do Funchal 40(198): 75–92.
- Graham MWR de V (1959) Notes on some genera and species of Encyrtidae (Hym.: Chalcidoidea), with special reference to Dalman’s types. Entomologisk Tidskrift 79(3/4): 147–175.
- Graham MWR de V (1969) Synonymic and descriptive notes on European Encyrtidae (Hym: Chalcidoidea). Polskie Pismo Entomologiczne 39: 211–319.
- Guerrieri E, Noyes JS (2000) Revision of European species of genus *Metaphycus* Mercet (Hymenoptera: Chalcidoidea: Encyrtidae), parasitoids of scale insects. Systematic Entomology 25: 147–222. doi: 10.1046/j.1365-3113.2000.00099.x
- Howard LO (1898) On some new parasitic insects of the subfamily Encyrtinae. Proceedings of the United States National Museum 21: 231–248. doi: 10.5479/si.00963801.1142.231
- Jiang DQ (1982) Notes on the encyrtid parasites (Hymenoptera, Chalcidoidea) from the Chinese wax scales *Ericerus pela* Chav. (Homoptera, Coccidea), with description of a new species. Acta Zootaxonomica Sinica 7(2): 179–186.
- Jiao Y, Zhao P (1999) Bionomics of *Metaphycus ericeri* Xu et Jiang (Hymenoptera: Encyrtidae). Acta Entomologica Sinica 42(2): 166–171.
- Li CD, Xu TJ (2006) A new record species of *Metaphycus* Mercet (Hymenoptera: Encyrtidae) from China, Journal of Northeast Forestry University 34(6): 112–113.

- Li CD, Li JW (2008) Description of a new species and two new record species of *Metaphycus* Mercet (Hymenoptera: Encyrtidae) from China. *Entomotaxonomia* 30(2): 131–139.
- Lotfalizadeh H (2010) The genus *Metaphycus* Mercet (Hym: Encyrtidae) of the Iranian fauna with description of a new species. *North-Western Journal of Zoology* 6(2): 255–261.
- Mercet RG (1917) Especies españolas del género *Aphycus*. *Boletín de la Real Sociedad Española de Historia Natural* 17: 128–139.
- Mercet RG (1921) Fauna Iberica. Himenópteros Fam. Encírtidos. Museo Nacional de Ciencias Naturales, Madrid, 727 pp.
- Mercet RG (1925) El género *Aphycus* y sus afines. *Eos. Revista Española de Entomología*. Madrid 1: 7–31.
- Myartseva SN (1987) Paraziticheskiye pereponchatokriliye roda *Metaphycus* Mercet (Hymenoptera, Encyrtidae) srednyey Azii. *Entomologicheskoe Obozrenie* 66(2): 379–388.
- Myartseva SN, Ruiz-Cancino E, Coronado-Blanco M (2007) A review of parasitoids (Hymenoptera: Chalcidoidea) of *Trialeurodes floridensis* (Hemiptera: Aleyrodidae) with description of a new species from Mexico. *Florida Entomologist* 90(4): 635–642. doi: 10.1653/0015-4040(2007)90[635:AROPHC]2.0.CO;2
- Noyes JS (1980) A review of the genera of Neotropical Encyrtidae (Hymenoptera: Chalcidoidea). *Bulletin of the British Museum (Natural History) (Entomology)* 41: 107–253.
- Noyes JS (1981) On the types of the species of Encyrtidae described by R. García Mercet (Hymenoptera: Chalcidoidea). *Eos. Revista Española de Entomología*. Madrid 55/56: 165–189.
- Noyes JS (2004) *Metaphycus* and related genera, parasitoids of scale insects (Coccoidea) and whiteflies (Aleyrodidae). Encyrtidae of Costa Rica (Hymenoptera: Chalcidoidea). *Memoirs of the American Entomological Institute* 73(2): 1–460.
- Noyes JS (2012) Universal Chalcidoidea Database. <http://www.nhm.ac.uk/chalcidoids> [Accessed July 2012]
- Noyes JS, Hayat M (1984) A review of the genera of Indo-Pacific Encyrtidae (Hymenoptera: Chalcidoidea). *Bulletin of the British Museum (Natural History) (Entomology)* 48: 131–395.
- Noyes JS, Woolley JB (1994) North American encyrtid fauna (Hymenoptera: Encyrtidae): taxonomic changes and new taxa. *Journal of Natural History* 28(6): 1327–1401. doi: 10.1080/00222939400770681
- Özdikmen H (2011) New names for some preoccupied specific epithets in Chalcidoidea, Encyrtidae, Eulophidae (Hymenoptera: Parasitica). *Munis. Entomology & Zoology* 6(2): 796–814.
- Sharkov AV, Voynovich ND (1988) A new genus of encyrtids (Hymenoptera, Encyrtidae) from northern Karelia and Finland. *Entomologicheskoe Obozrenie* 67(4): 826–830.
- Shi ZY (1986) A preliminary note on the species and biology of the parasitic Hymenoptera of scale insects in the central area of Henan province. *Natural Enemies of Insects* 8(1): 1–4.
- Sugonjaev ES (1960) On the species of the genera allied to *Aphycus* Mayr (Hymenoptera, Chalcidoidea) from the European part of the USSR. *Entomologicheskoe Obozrenie* 39(2): 364–383.
- Sugonjaev ES, Babaev T (1971) Morphological and biological peculiarities of *Metaphycus dispar* Mercet (Chalcidoidea, Encyrtidae) – a parasite of Coccidae. *Izvestiya Akademii Nauk Tadzhikskoy SSR (Otdelenie Biologicheskikh Nauk)* 1: 70–75.

- Sugonjaev ES (1975) New Palaearctic species of the genus *Metaphycus* (Hymenoptera, Chalcidoidea). Zoologicheskii Zhurnal 55(1): 145–148.
- Tachikawa T (1957) *Metaphycus tamakatakaigara* sp.n., an important parasite of *Lecanium kuwanaense* Kuwana in Japan (Hym., Encyrtidae). Transactions of the Shikoku Entomological Society 6(2): 27–30.
- Tachikawa T (1963) Revisional studies of the Encyrtidae of Japan (Hymenoptera, Chalcidoidea). Memoirs of Ehime University 6(9): 1–264.
- Tan YG, Chen J, Liu FX (2008) A new species of the genus *Metaphycus* Mercet (Hymenoptera, Encyrtidae) parasitizing citrus coccids *Parasaissetia citricola* (Kuwana). Journal of Hubei University (Natural Science) 30(3): 302–304.
- Trjapitzin VA (1967) Encyrtids (Hymenoptera, Encyrtidae) of the Maritime Territory. Trudy Zoologicheskogo Instituta (Akademiya Nauk SSSR) 41: 173–221.
- Trjapitzin VA (1971) Review of the genera of Palaearctic encyrtids (Hymenoptera, Encyrtidae). Trudy Vsesoyuznogo Entomologicheskogo Obshchestva 54: 68–155.
- Trjapitzin VA (1975) Contribution to the knowledge of parasitic Hymenoptera of the genus *Metaphycus* Mercet, 1917 (Hymenoptera, Chalcidoidea, Encyrtidae) of the Czechoslovakian fauna. Studia Entomologica Forestalia 2(1): 5–17.
- Trjapitzin VA (1978) Hymenoptera II. Chalcidoidea 7. Encyrtidae. Opredeliteli Nasekomykh Evropeyskoy Chasti SSR 3: 236–328.
- Trjapitzin VA (1982) Two new genera of encyrtids (Hymenoptera, Encyrtidae) from the Turkmenian fauna. Izvestiya Akademii Nauk Turkmenskoy SSR (Seriya Biologicheskikh Nauk) 2: 38–40.
- Trjapitzin VA (1989) Parasitic Hymenoptera of the Fam. Encyrtidae of Palaearctics. Opredeliteli po Faune SSSR Zoologicheskii Instituta Akademii Nauk SSR, Leningrad 158: 1–489.
- Trjapitzin VA, Gordh G (1978) Review of genera of Nearctic Encyrtidae (Hymenoptera, Chalcidoidea). II. Entomologicheskoe Obozrenie 57(3): 636–653.
- Viggiani G, Guerrieri E (1988) Italian species of the genus *Metaphycus* Mercet (Hymenoptera: Encyrtidae). Bollettino del Laboratorio di Entomologia Agraria ‘Filippo Silvestri’, Portici 45: 113–140.
- Walker F (1838) Monographia Chalciditum. Entomological Magazine 5: 418–431.
- Xu ZH, Jiang DQ (1990) Description of a new species *Metaphycus ericeri* (Hymenoptera: Encyrtidae) from China. Acta Agriculturae Universitatis Zhejiangensis 17(2): 203–204.
- Zeya SB, Hayat M (1993) A review of the Indian species of *Metaphycus* (Hymenoptera: Encyrtidae). Oriental Insects 27: 185–210. doi: 10.1080/00305316.1993.10432270
- Zhang FP, Niu LM, Xu YC, Han DY, Zhang JB, Fu YG (2010) A control effect of parasitic *Metaphycus parasaissetiae* on host *Parasaissetia nigra*. Chinese Journal of Applied Ecology 21(8): 2166–2170.
- Zhang YZ, Huang DW, Fu G-Y, Peng Z-Q (2006) A new species of *Metaphycus* Mercet (Hymenoptera: Encyrtidae) from China. parasitoid of *Parasaissetia nigra* (Nietner) (Homoptera: Coccoidea), Entomological News 118 (1): 68–72. doi: 10.3157/0013-872X(2007)118[68:A NSOMM]2.0.CO;2
- Zhang YZ, Wu SA (2008) A new species of genus *Metaphycus* (Hymenoptera: Encyrtidae) from China. Entomotaxonomia 30(4): 297–299.