

Poor Growth and Pneumonia Seasonality in Infants in the Philippines: Cohort and Time Series Studies

Stuart Paynter^{1*}, Robert S. Ware¹, Marilla G. Lucero², Veronica Tallo², Hanna Nohynek³, Eric A. F. Simões⁴, Philip Weinstein⁵, Peter D. Sly⁶, Gail Williams¹, the ARIVAC Consortium[¶]

1 School of Population Health, University of Queensland, Brisbane, Queensland, Australia, **2** Research Institute for Tropical Medicine, Department of Health, Muntinlupa City, Metro Manila, Philippines, **3** Department of Vaccines and Immune Protection, National Institute for Health and Welfare, Helsinki, Finland, **4** University of Colorado Denver School of Medicine, and Colorado School of Public Health, Aurora, Colorado, United States of America, **5** Barbara Hardy Institute, University of South Australia, Adelaide, South Australia, Australia, **6** Children's Health and Environment Program, Queensland Children's Medical Research Institute, University of Queensland, Brisbane, Queensland, Australia

Abstract

Children with poor nutrition are at increased risk of pneumonia. In many tropical settings seasonal pneumonia epidemics occur during the rainy season, which is often a period of poor nutrition. We have investigated whether seasonal hunger may be a driver of seasonal pneumonia epidemics in children in the tropical setting of the Philippines. In individual level cohort analysis, infant size and growth were both associated with increased pneumonia admissions, consistent with findings from previous studies. A low weight for age z-score in early infancy was associated with an increased risk of pneumonia admission over the following 12 months (RR for infants in the lowest quartile of weight for age z-scores 1.28 [95% CI 1.08 to 1.51]). Poor growth in smaller than average infants was also associated with an increased risk of pneumonia (RR for those in the lowest quartile of growth in early infancy 1.31 [95%CI 1.02 to 1.68]). At a population level, we found that seasonal undernutrition preceded the seasonal increase in pneumonia and respiratory syncytial virus admissions by approximately 10 weeks (pairwise correlation at this lag was -0.41 [95%CI -0.53 to -0.27] for pneumonia admissions, and -0.63 [95%CI -0.72 to -0.51] for respiratory syncytial virus admissions). This lag appears biologically plausible. These results suggest that in addition to being an individual level risk factor for pneumonia, poor nutrition may act as a population level driver of seasonal pneumonia epidemics in the tropics. Further investigation of the seasonal level association, in particular the estimation of the expected lag between seasonal undernutrition and increased pneumonia incidence, is recommended.

Citation: Paynter S, Ware RS, Lucero MG, Tallo V, Nohynek H, et al. (2013) Poor Growth and Pneumonia Seasonality in Infants in the Philippines: Cohort and Time Series Studies. PLoS ONE 8(6): e67528. doi:10.1371/journal.pone.0067528

Editor: Cécile Viboud, National Institutes of Health, United States of America

Received: February 19, 2013; **Accepted:** May 20, 2013; **Published:** June 28, 2013

Copyright: © 2013 Paynter et al. This is an open-access article distributed under the terms of the Creative Commons Attribution License, which permits unrestricted use, distribution, and reproduction in any medium, provided the original author and source are credited.

Funding: This study is part of the research of the ARIVAC Consortium. The ARIVAC project was supported by the European Commission DG Research INCO program (contracts IC18-CY97-2019, ICA4-CT-1999-10008, ICA4-CT-2002-10062); Academy of Finland (contracts: 206283, 106974, 108873, and 108878); Finnish Ministry of Foreign Affairs (bilateral contracts 75502901 and 327/412/2000); Finnish Physicians for Social Responsibility; GAVI ADIP Pneumo; Sanofi Pasteur; Research Institute for Tropical Medicine of the Philippines; National Public Health Institute Finland; University of Queensland; University of Colorado; National Health and Medical Research Council of Australia; and Programme for appropriate Technology in Health (PATH). The views expressed by the authors do not necessarily reflect the views of PATH. The funders had no role in study design, data collection and analysis, decision to publish, or preparation of the manuscript.

Competing Interests: Sanofi Pasteur contributed towards direct research costs related to data management for the PCV trial. The authors do not believe this constitutes a conflict of interest related to this manuscript. This does not alter the authors' adherence to all the PLOS ONE policies on sharing data and materials.

* E-mail: s.paynter@uq.edu.au

¶ Membership of the ARIVAC Consortium is provided in the Acknowledgments.

Introduction

Pneumonia is a major cause of child mortality globally, with most deaths occurring in the tropics [1]. In contrast to temperate settings, where pneumonia and respiratory syncytial virus (RSV) incidence peaks in winter, in many tropical settings yearly pneumonia and RSV epidemics occur during the rainy season [2,3,4]. One possible driver of pneumonia seasonality in the tropics is undernutrition. There is consistent evidence from many settings demonstrating that malnourished children have an increased risk of pneumonia [5,6,7,8,9], and also RSV [10], and in many tropical settings the rainy season is a period of poor nutrition, referred to as the hungry season [11]. Thus it is plausible that seasonal periods of poor nutrition may be a driver of the seasonal peaks of pneumonia.

We have investigated the association between undernutrition and pneumonia incidence in the tropical setting of the Philippines.

In this paper we have three aims: A) to confirm that poor nutrition is a risk factor for pneumonia in individual children in this setting, B) to assess the seasonal pattern of nutritional status in the child population in this setting, and C) to assess whether seasonal patterns of nutritional status could be driving yearly pneumonia and RSV epidemics in children in this setting.

Ethics Statement

The trial "Effectiveness of an 11-valent pneumococcal conjugate vaccine against pneumonia in Philippine children: A double-blind, placebo-controlled, randomised, multicentre, effectiveness study" was approved and monitored by the Ethical and Institutional Review Board of the Research Institute for Tropical Medicine (RITM), the Philippines. Written informed consent was obtained from parents/guardians prior to enrolling infants into the trial. In a small minority of cases both parents were illiterate. In

these instances a witness independent of the research team (a relative or neighbour) attested to (1) that the information provided to the parent was from the information sheet, (2) that the parent was given the opportunity to ask questions, and (3) that the parent provided verbal consent for the child to participate in the study. The witness then signed the consent form on behalf of the parent. The Ethical and Institutional Review Board of the RITM approved the consent protocol and information sheets. This retrospective analysis used de-identified data collected during the trial. Ethical approval for the analysis in this paper was granted without the need to seek additional consent, by the University of Queensland School of Population Health Research Ethics Committee in June 2011 (Ethics approval SP070711).

Methods

The data used in this study were collected during a randomised controlled trial to investigate the efficacy of pneumococcal conjugate vaccine (PCV) in Bohol Province in the Philippines between July 2000 and December 2004 [12]. Three doses of either PCV or saline placebo were administered to the 12,194 trial participants at median ages of 1.8, 2.9 and 3.9 months. Trial participants were weighed at each of these vaccinations. Hospital admissions for respiratory infection were assessed and recorded in all children living in the trial municipalities (whether or not they were trial participants). In our analyses of pneumonia cases we included all hospital admissions with a hospital discharge code for pneumonia (this classification also contains some cases of bronchiolitis). In addition we have performed a seasonal level analysis of admissions due to confirmed RSV infection [13]. The seasonality of both is similar.

A. Individual Level Analysis of the Association between Nutritional Status and Pneumonia Incidence in Infants

Previous individual level studies have used one of two methods to assess nutritional status: either a single point measure of nutritional status [5,7], or a measure of growth between two points in time [8,14]. In our study we have used both approaches. We examined the incidence of pneumonia admissions (survival until first pneumonia admission) according to a point measures of nutritional status (weight for age z-score at third vaccination) and also according to growth between first and third vaccination (weight for age z-score at third vaccination minus the weight for age z-score at first vaccination). Weight for age z-scores were calculated using the WHO child growth standards [15]. In all of these analyses we followed up children from third vaccination, for 12 months in order to reduce confounding by season of follow up. We used multivariable Cox regression for statistical significance tests, including terms for the number of children in the household and vaccination status (PCV or placebo). In addition, when assessing the effect of growth between first and third vaccination on pneumonia incidence, we stratified the analysis according to

weight for age z-score at first vaccination (infants with a high z-score at first vaccination were more likely to have negative growth to third vaccination, while infants with a low z-score at first vaccination were more likely to have positive growth, suggesting a degree of endogenous regression to the mean following birth). For all analyses we focussed on the infants with poorest nutritional status when estimating hazard ratios, comparing the rate of pneumonia in infants in the lowest quartiles of nutritional status with the remaining infants.

B. Assessing the Seasonal Pattern of Nutrition and Growth in the Study Population

We constructed time series of two growth indices to assess seasonality. For the first time series we used weight for age z-score at first vaccination. Weight for age z-score at first vaccination appeared strongly influenced by birth weight: there was a strong individual level correlation between weight for age z-score at first vaccination and at third vaccination ($r=0.75$). We therefore considered weight for age z-score at first vaccination to be a proxy measure of birth weight, and used this data to construct a time series of weekly mean birth weight z-scores (attributing each infant's weight for age z-score at first vaccination to their birth date rather than the date of first vaccination). We used data from all children in the trial who were weighed at first vaccination ($n=12,191$). To assess the validity of this time series, we compared it to a monthly time series of the incidence of low birth weight in Bohol between 1979 and 1990, using data collected as part of a case control study examining risk factors for child mortality ($n=3663$) [16]. For the second time series we used growth between first and third vaccination. We plotted each infant's growth (weight for age z-score at third vaccination minus the weight for age z-score at first vaccination) at the midpoint between first and third vaccination, and calculated the mean of these data points for each week of the time series. For this second time series we used data from infants with a weight for age z-score below the median at first vaccination, as only in these infants was our growth measure associated with pneumonia risk (see Results). 5412 of these infants had weight data for first and third vaccination and contributed to the time series.

We also assessed the seasonality of nutrition more directly using quarterly palay (unhusked rice) production in Bohol, available from the Philippines Bureau of Agricultural Statistics [17]. In Bohol 53% of energy intake and 37% of protein intake is provided by rice, making this a good proxy for protein energy nutrition [18]. Seasonal undernutrition typically peaks just prior to the harvest season, when food availability is lowest, and food prices highest [11].

Table 1. Individual level association between weight for age z-score at third vaccination and pneumonia admission.

	Univariate analysis		Multivariate analysis	
	Hazard Ratio	95% CI	Hazard Ratio	95% CI
Weight for age z-score at third vaccination (lowest quartile/other quartiles)	1.31	1.11 to 1.55	1.28	1.08 to 1.51
Number of children in the household (per extra child)	1.12	1.08 to 1.16	1.12	1.09 to 1.16
Vaccination status (PCV/placebo)	0.92	0.80 to 1.07	0.90	0.77 to 1.05

doi:10.1371/journal.pone.0067528.t001

Table 2. Individual level association between growth from first to third vaccination and pneumonia admission, in children with a weight for age z-score less than the median at first vaccination.

	Univariate analysis		Multivariate analysis	
	Hazard Ratio	95% CI	Hazard Ratio	95% CI
Growth between first and third vaccination (lowest quartile/other quartiles)	1.32	1.03 to 1.69	1.31	1.02 to 1.68
Number of children in the household (per extra child)	1.12	1.08 to 1.16	1.13	1.08 to 1.18
Vaccination status (PCV/placebo)	0.92	0.80 to 1.07	0.92	0.75 to 1.13

doi:10.1371/journal.pone.0067528.t002

C. Analysis of the Population Level Association between Growth and Pneumonia Seasonality

We compared weekly pneumonia ($n = 1571$) and RSV ($n = 245$) admissions to the seasonality of birth weight, infant growth, and palay production over the period from July 2000 to September 2003. For birth weight seasonality we used the three month moving average of weekly mean birth weight z-scores. We have used three month moving averages in order to smooth out short term fluctuations, in order to concentrate on seasonal scale fluctuations (for any particular week, the three month moving average is the average of that week, the six weeks prior, and the six weeks after, giving an average over 13 weeks). For infant growth we used the three month moving average of weekly mean growth between first and third vaccination. We removed year on year trend from this infant growth time series by subtracting the 12 month moving average (giving a time series of relative infant growth according to season). For palay production seasonality we used the quarterly data. We compared these seasonal scale time series to weekly pneumonia and RSV admissions using cross-correlation analysis, and performed pairwise correlation at points of maximum cross-correlation to assess statistical significance [19].

Results

A. Individual Level Analysis of the Association between Nutritional Status and Pneumonia Incidence in Infants

Infants in the lowest quartile of weight for age z-score at third vaccination had a significantly increased rate of pneumonia admission over the following 12 months (Table 1). The survival curve (to first pneumonia admission) for quartiles of weight for age z-score at third vaccination is given in Figure 1. Infants in the lowest quartile of growth between first and third vaccination had a significantly increased rate of pneumonia admission, but only in infants who were smaller than the median at first vaccination (Tables 2 and 3). The survival curve (to first pneumonia admission) for quartiles of growth between first and third vaccination in

infants with weight for age z-scores below the median at first vaccination is given in Figure 2.

B. Assessing the Seasonal Pattern of Nutrition and Growth in the Study Population

Figure 3 shows the comparison of the three month moving averages of the indices of child growth by calendar month (estimated birth weight z-scores, incidence of low birth weight from the 1979–1990 study, and infant growth between first and third vaccination). All three indices indicate poor growth occurs in the third calendar quarter. The time series of infant growth between first and third vaccination also indicates a second period of poor growth in young infants early in the calendar year.

C. Analysis of the Population Level Association between Growth and Pneumonia Seasonality

Figure 4 shows the seasonal patterns of estimated birth weight z-scores, relative growth between first and third vaccination and palay production, together with weekly pneumonia and RSV incidence. The time series of palay production suggests nutrition is poorest in the third calendar quarter. Birth weight and infant growth are both consistently reduced during the third calendar quarter. In addition, infant growth shows a consistent trough during the first calendar quarter. The cross-correlation analyses are shown in Figure 5. Seasonal variations in estimated birth weight z-scores showed a negative correlation with pneumonia and RSV admissions 10 weeks later. Seasonal variations in growth between first and third vaccination showed a negative correlation with pneumonia and RSV admissions 8–10 weeks later, and a second negative correlation with pneumonia and RSV admissions 12 weeks earlier (the latter due to the trough in infant growth in the first calendar quarter). Seasonal variations in palay production showed a negative correlation with pneumonia and RSV admissions 15 weeks later. Table 4 shows the results of pairwise correlation of weekly pneumonia and RSV admissions with the seasonal indices of growth and nutrition at the time lags

Table 3. Individual level association between growth from first to third vaccination and pneumonia admission, in children with a weight for age z-score greater than the median at first vaccination.

	Univariate analysis		Multivariate analysis	
	Hazard Ratio	95% CI	Hazard Ratio	95% CI
Growth between first and third vaccination (lowest quartile/other quartiles)	1.03	0.81 to 1.32	1.04	0.81 to 1.32
Number of children in the household (per extra child)	1.12	1.08 to 1.16	1.12	1.06 to 1.17
Vaccination status (PCV/placebo)	0.92	0.80 to 1.07	0.87	0.70 to 1.09

doi:10.1371/journal.pone.0067528.t003

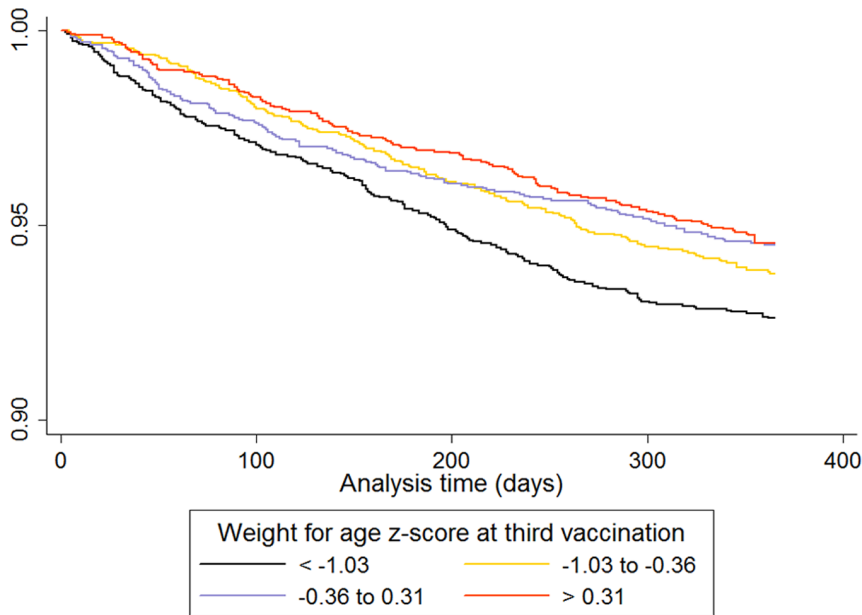


Figure 1. Survival curve (until first pneumonia admission) in children according to quartiles of weight for age z-score at third vaccination.

doi:10.1371/journal.pone.0067528.g001

highlighted in Figure 5. All of these correlations are statistically significant at the $p = 0.05$ level.

Discussion

We have confirmed in our study setting the well known association between poor growth and increased pneumonia incidence in individual infants. In addition, we have shown that at a population level in our study setting, seasonal undernutrition precedes the seasonal peak of pneumonia and RSV incidence in

infants. The seasonal level association between poorer nutritional status in the third calendar quarter and subsequent pneumonia and RSV admissions was maximal at a lag of approximately 10 weeks. This lag is plausible considering the non-linear dynamics of infectious disease transmission, where seasonal scale increases in transmission may take weeks to force seasonal increases in disease incidence [20]. Mathematical modeling of pneumonia seasonality in this setting would be useful to further assess the plausibility of this lag. In addition, there is direct evidence to suggest this lag is biologically plausible. During the Dutch famine in the winter of

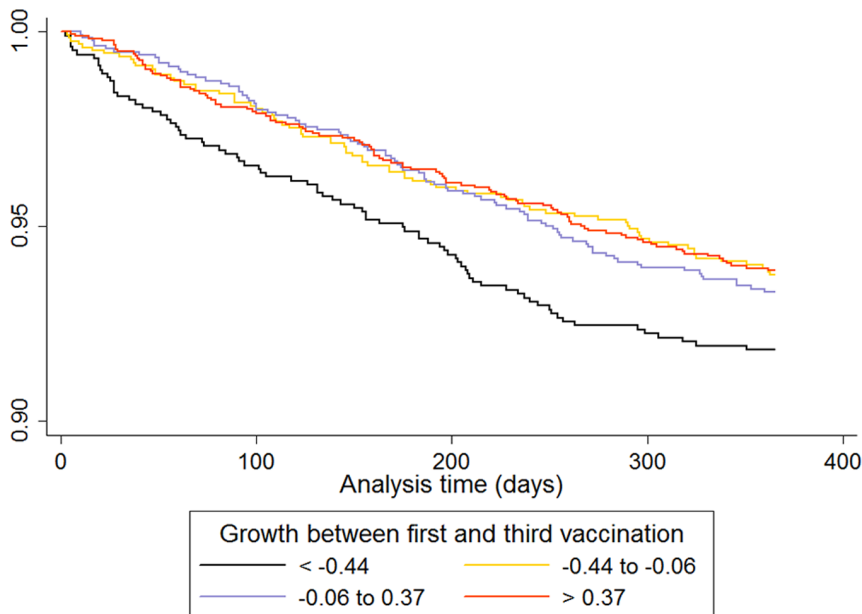


Figure 2. Survival curve (until first pneumonia admission) in children according to quartiles of growth between first and third vaccination, in those children with a weight for age z-score less than the median at first vaccination.

doi:10.1371/journal.pone.0067528.g002

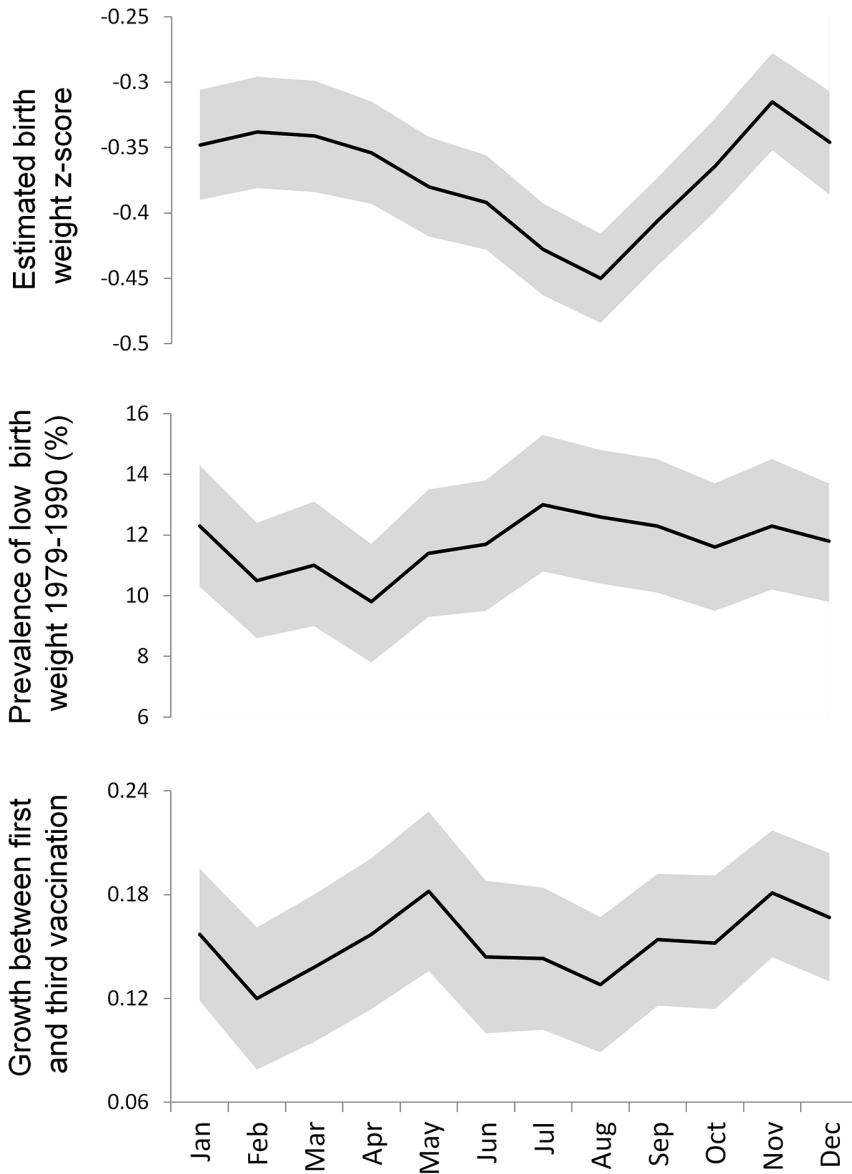


Figure 3. Comparison of seasonal patterns (three month moving averages) of indices of child growth in Bohol. Shaded areas indicate 95% confidence intervals.
doi:10.1371/journal.pone.0067528.g003

1944 to 1945, birth weights fell soon after the start of the famine, lagging up to one month behind the reduction in rations [21]. Infants born immediately prior to the famine had substantially

increased mortality during the late post-neonatal period (age 90 to 365 days) but not before [22]. These data suggest a lag between the abrupt reduction in infant growth and increased infant

Table 4. Pairwise correlation of weekly pneumonia and RSV admissions with seasonal indices of growth and nutrition, at time lags of maximal correlation as highlighted in Figure 5.

	Pneumonia admissions		RSV admissions	
	Lag (weeks)	Correlation (95% CI)	Lag (weeks)	Correlation (95% CI)
Estimated birth weight z-score	-10	-0.41 (-0.53 to -0.27)	-10	-0.63 (-0.72 to -0.51)
Growth between first and third vaccination	-8	-0.18 (-0.33 to -0.03)	-10	-0.21 (-0.37 to -0.04)
Palay production	-15	-0.52 (-0.63 to -0.40)	-15	-0.55 (-0.66 to -0.42)

A negative lag indicates exposure occurring before the outcome.
doi:10.1371/journal.pone.0067528.t004

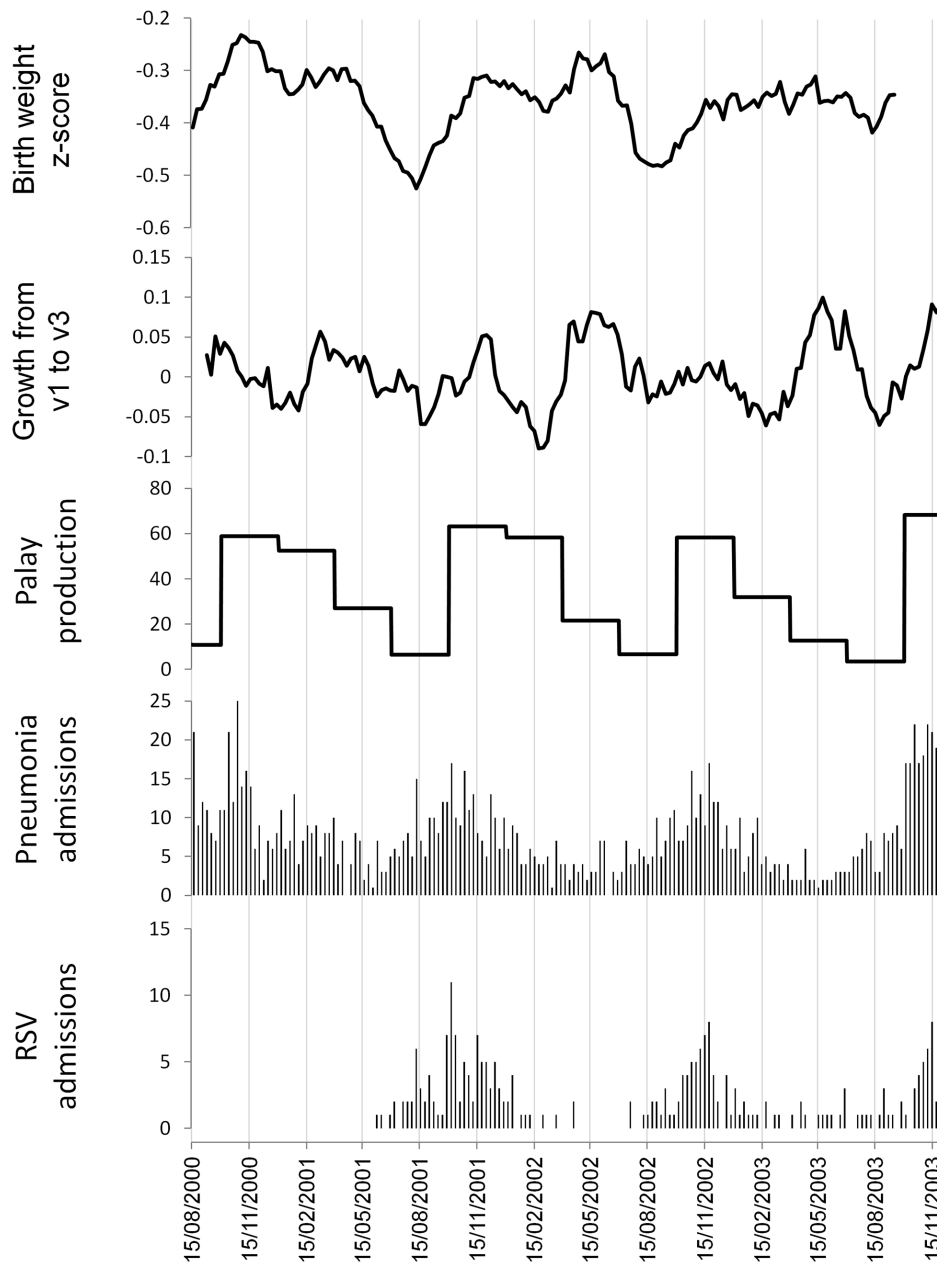


Figure 4. Seasonal patterns (three month moving averages) of estimated birth weight z-scores, relative growth between first and third vaccination, and palay production, together with weekly pneumonia and RSV admissions. Top to bottom: estimated birth weight z-scores, growth between first and third vaccination, palay production (thousands of metric tons), pneumonia admissions in children aged less than 18 months, RSV admissions. Bohol, Philippines 2000 to 2003. doi:10.1371/journal.pone.0067528.g004

mortality of two or more months, consistent with the lag found in our time series analysis.

Our time series of growth between first and third vaccination showed two troughs each year. One trough, occurring in the third calendar quarter, coincided with the yearly troughs in palay production and estimated birth weight z-scores. The other trough occurred in the first calendar quarter. This additional trough in growth may be due to diarrheal disease rather than poor nutrition. A recent study from the Philippines found that rotavirus prevalence was highest in infants aged three to five months, and most cases occurred between December and February [23]. This coincides almost exactly with the first quarter trough in growth

between first and third vaccination. Poor child growth and infectious diseases have a synergistic relationship, where poor growth increases the risk of infectious diseases and infectious diseases (particularly diarrheal diseases) reduce growth [9]. It is interesting that this reduction in infant growth in the first quarter is not associated with an obvious subsequent peak in pneumonia or RSV admissions (note however there is a small secondary peak in pneumonia admissions early in 2001, and a similar secondary peak occurred early in 2004 although we have no growth data to compare to this). The most likely reason for the lack of an obvious increase in admissions following the first quarter trough in growth is that this trough occurs only in a small subgroup of the

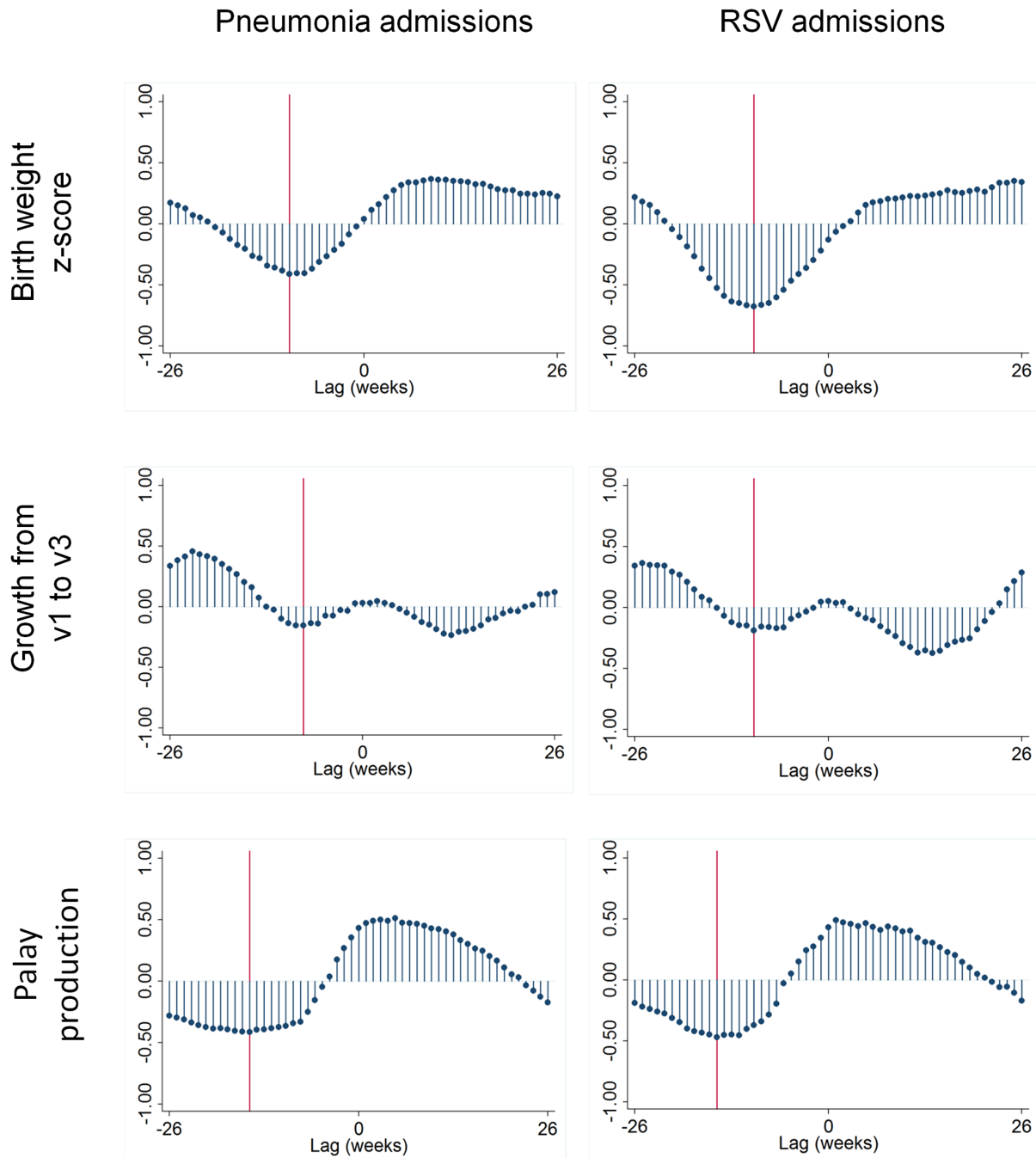


Figure 5. Weekly cross-correlations of seasonal patterns of estimated birth weight z-scores, growth between first and third vaccination, and palay production, with weekly pneumonia and RSV admissions. A negative lag indicates exposure occurring before the outcome. Vertical reference lines indicate points of maximum correlation. Bohol, Philippines 2000 to 2003. doi:10.1371/journal.pone.0067528.g005

population. The available data only indicate this additional trough occurs in young infants, and it is unclear which, if any, other subgroups are affected. Further analysis of population subgroups, including modeling how variations in susceptibility in different subgroups affects overall transmission and incidence, will be necessary to assess this hypothesis.

Although our birth weight measure was estimated from weight for age z-scores at approximately two months of age, it is reassuring that the seasonal pattern of our estimated birth weight z-score time series is similar to that of actual birth weights from the

earlier Bohol study. The correlation between birth weight and infant weight that we assumed when estimating our birth weight measure has been noted elsewhere: a study in Bangladesh found that weight at 12 months of age was still largely a function of birth weight [24]. A second study from Bangladesh found that the seasonality of birth weight was correlated both with nutrition in all children aged less than five years, and with rice availability [25]. This evidence reinforces our opinion that the lower estimated birth weights, reduced growth between first and third vaccination, and

low palay production during the third calendar quarter indicate seasonal undernutrition in our study setting at this time.

In our individual level analysis we found that infant growth between first and third vaccination was associated with an increased risk of pneumonia only in the infants who were smaller than average at first vaccination. There are two possible explanations for this. Firstly, it is possible that larger infants have more energy reserves, and so can better withstand acute nutritional shocks. Secondly, it may be that our growth measure has poor validity in larger infants (as larger infants tended to have a drop in weight for age z-scores between first and third vaccination, while smaller infants tended to undergo 'catch up' growth). Our results are consistent with two previous studies examining the association between poor growth and hospital admissions in children: both studies found this association was stronger in children who were smaller to begin with [8,14].

Household crowding is an independent risk factor for respiratory infection [26]. We controlled for this by including the number of children in the household in our individual level analysis. The number of children in the household also serves as a measure of socioeconomic status in the individual level analysis, however some residual confounding from socioeconomic status may remain. In contrast the seasonal level time series analysis should not be confounded by individual level socioeconomic status (however in many settings household income is under greatest pressure during the rainy season, and it is possible that health determinants other than nutrition may be affected at this time).

Several other environmental factors may play a role in driving seasonal patterns of respiratory infection in the tropics. There is good evidence to show that a larger number of children within the household is associated with an increased risk of RSV infection [26]. We found this same association in our study setting (Tables 1 to 3). This association is likely due to a combination of an increased chance of introduction of pathogens into the household, as well as increased crowding within the household. While the actual number of children in a household is unlikely to vary seasonally, it is hypothesised that household crowding may be increased during the rainy season as people stay indoors more to avoid bad weather (although this hypothesis has not yet been tested in tropical settings) [27]. Vitamin D deficiency appears to be associated with an increased risk of respiratory infection, and has been proposed as a driver of seasonal outbreaks of respiratory infections in temperate areas [28,29]. Less data is available from tropical settings however. In a study in India children with acute lower respiratory infection had lower vitamin D levels than controls, suggesting that vitamin D deficiency could be a driver of respiratory infection incidence in tropical settings [30]. Whether or not seasonal vitamin D deficiency occurs in children in tropical settings is not clear. In tropical settings, sunshine hours are determined more by cloud cover than solar elevation, hence sunshine hours are generally lowest during the rainy season. In our study setting of Bohol, we have previously found the seasonal patterns of sunshine hours and pneumonia incidence to be negatively associated [31]. Studies directly measuring seasonal

variations in vitamin D levels in children in the tropics will be necessary to investigate this hypothesis further. Pathogen survival and virulence may also vary seasonally due to environmental factors such as humidity and sunshine [32]. The survival of enveloped viruses such as RSV on environmental surfaces is generally better at lower humidity [33] (RSV is predominantly transmitted by direct and indirect contact rather than by aerosol [34]). Thus while humidity may be a driver of RSV transmission in temperate winters, it is unlikely to be a driver in tropical wet seasons. Seasonal variations in sunshine however may influence environmental virus survival in the tropics [27]. More than one factor is likely to be acting to drive seasonality, and the dominant driver is likely to vary from setting to setting. In many tropical settings (including our study setting) rainfall is high, sunshine is low, and nutrition is poorest all at the same time of year, making it difficult to tease apart the effects of these exposures. Closer investigation of tropical settings where respiratory infections occur outside of the rainy season may help to differentiate these effects.

The results from our study suggest that in addition to being an individual level risk factor for pneumonia, poor nutrition may act as a population level driver of seasonal pneumonia epidemics in the tropics. Further investigation of the seasonal level association, in particular the estimation of the expected lag between seasonal undernutrition and increased pneumonia incidence, will be required to assess causality.

Acknowledgments

This study is part of the research of the ARIVAC Consortium. The ARIVAC Consortium thanks and acknowledges the participation of the infants, parents, staff, Local Government of the Province of Bohol and Local Government Units (LGUs) of Baclayon, Ballilihan, Cortes, Dauis, Panglao and Tagbilaran City; staff of the Pathology and Pediatric Departments of the BRH, and the private hospitals Tagbilaran Community Hospital, Borja Family Clinic, Medical Mission Group of Hospitals, Ramiro Community Hospital, St. Jude Hospital, Englewood Hospital, and Tagbilaran Puericulture Center.

P. Helena Mäkelä initiated the ARIVAC consortium together with the ARIVAC collaborators. She passed away in November 2011.

ARIVAC Consortium authorship: Socorro Lupisan², Beatriz Quiambao², Petri Ruutu⁴, Diozele HM Sanvictores², Ian Riley¹, Helena Käyhty³.

1 School of Population Health, University of Queensland, Brisbane, Queensland, Australia

2 Research Institute for Tropical Medicine, Department of Health, Muntinlupa City, Metro Manila, Philippines

3 Department of Vaccines and Immune Protection, National Institute for Health and Welfare, Helsinki, Finland

4 Department of Infectious Disease Surveillance and Control, National Institute for Health and Welfare, Helsinki, Finland

Author Contributions

Conceived the study: SP. Designed the study: SP GW RSW PW PDS HN MGL. Revised the manuscript: RSW MGL VT HN EAFS PW PDS GW. Analyzed the data: SP RSW GW. Contributed reagents/materials/analysis tools: MGL VT HN EAFS GW. Wrote the paper: SP.

References

- Lozano R, Naghavi M, Foreman K, Lim S, Shibuya K, et al. (2012) Global and regional mortality from 235 causes of death for 20 age groups in 1990 and 2010: a systematic analysis for the Global Burden of Disease Study 2010. *The Lancet* 380: 2095–2128.
- Enwere G, Cheung YB, Zaman SMA, Akano A, Oluwalana C, et al. (2007) Epidemiology and clinical features of pneumonia according to radiographic findings in Gambian children. *Tropical Medicine & International Health* 12: 1377–1385.
- Weber MW, Mulholland EK, Greenwood BM (1998) Respiratory syncytial virus infection in tropical and developing countries. *Tropical Medicine & International Health* 3: 268–280.
- Shek LP-C, Lee B-W (2003) Epidemiology and seasonality of respiratory tract virus infections in the tropics. *Paediatric Respiratory Reviews* 4: 105–111.
- Caulfield LE, de Onis M, Blossner M, Black RE (2004) Undernutrition as an underlying cause of child deaths associated with diarrhea, pneumonia, malaria, and measles. *American Journal of Clinical Nutrition* 80: 193–198.

6. Tupasi TE, Mangubat NV, Sumico ME, Magdangal DM, Navarro EE, et al. (1990) Malnutrition and acute respiratory tract infections in Filipino children. *Rev Infect Dis* 12 Suppl 8: S1047–S1054.
7. Yoon PW, Black RE, Moulton LH, Becker S (1997) The effect of malnutrition on the risk of diarrheal and respiratory mortality in children <2 y of age in Cebu, Philippines. *American Journal of Clinical Nutrition* 65: 1070–1077.
8. Victora CG, Barros FC, Horta BL, Martorell R (2001) Short-term benefits of catch-up growth for small-for-gestational-age infants. *International Journal of Epidemiology* 30: 1325–1330.
9. Black RE, Allen LH, Bhutta ZA, Caulfield LE, de Onis M, et al. (2008) Maternal and child undernutrition 1 - Maternal and child undernutrition: global and regional exposures and health consequences. *Lancet* 371: 243–260.
10. Okiro EA, Ngama M, Bett A, Cane PA, Medley GF, et al. (2008) Factors associated with increased risk of progression to respiratory syncytial virus-associated pneumonia in young Kenyan children. *Tropical Medicine & International Health* 13: 914–926.
11. Vaitla B, Devereux S, Swan SH (2009) Seasonal hunger: a neglected problem with proven solutions. *PLoS medicine* 6: e1000101.
12. Lucero MG, Nohynek H, Williams G, Tallo V, Simoes EAF, et al. (2009) Efficacy of an 11-Valent Pneumococcal Conjugate Vaccine Against Radiologically Confirmed Pneumonia Among Children Less Than 2 Years of Age in the Philippines A Randomized, Double-Blind, Placebo-Controlled Trial. *Pediatric Infectious Disease Journal* 28: 455–462.
13. Simões EA, Patel C, Sung W-K, Lee CW, Loh KH, et al. (2013) Pathogen Chip for Respiratory Tract Infections. *Journal of clinical microbiology* 51: 945–953.
14. Hui LL, Schooling CM, Wong MY, Ho LM, Lam TH, et al. (2010) Infant Growth During the First Year of Life and Subsequent Hospitalization to 8 Years of Age. *Epidemiology* 21: 332–339.
15. WHO (2012) Child growth standards: WHO Anthro (version 3.2.2, January 2011) and macros.
16. Lucero MG (1996) The impact of case management for pneumonia on child mortality: University of Queensland.
17. Philippines Bureau of Agricultural Statistics (2012) Volume of cereals production, 1994 to 2009, by cereal type, region/province, year and period.
18. Food and Nutrition Research Institute (2003) Philippine facts and figures 2003: Part 1. Dietary facts and figures. Department of Science and Technology, Republic of the Philippines.
19. Peng RD, Dominici F (2008) *Statistical Methods for Environmental Epidemiology with R*. New York: Springer.
20. Grassly N, Fraser C, (2006) Seasonal infectious disease epidemiology. *Proc R Soc B* 273: 2541–2550.
21. Stein AD, Zybert PA, van de Bor M, Lumey L (2004) Intrauterine famine exposure and body proportions at birth: the Dutch Hunger Winter. *International Journal of Epidemiology* 33: 831–836.
22. Hart N (1993) Famine, maternal nutrition and infant mortality: a re-examination of the Dutch hunger winter. *Population Studies-a Journal of Demography* 47: 27–46.
23. Carlos CC, Inobaya MT, Bresce JS, Lagrada ML, Olorosa AM, et al. (2009) The burden of hospitalizations and clinic visits for rotavirus disease in children aged <5 years in the Philippines. *Journal of Infectious Diseases* 200: S174–S181.
24. Arifeen SE, Black RE, Caulfield LE, Antelman G, Baqui AH, et al. (2000) Infant growth patterns in the slums of Dhaka in relation to birth weight, intrauterine growth retardation, and prematurity. *American Journal of Clinical Nutrition* 72: 1010–1017.
25. Hort KP (1987) Seasonal variation of birth weight in Bangladesh. *Annals of Tropical Paediatrics* 7: 66–71.
26. Colosia AD, Masaquel A, Hall CB, Barrett AM, Mahadevia PJ, et al. (2012) Residential crowding and severe respiratory syncytial virus disease among infants and young children: A systematic literature review. *BMC Infectious Diseases* 12: 95.
27. Tamerius J, Nelson MI, Zhou SZ, Viboud C, Miller MA, et al. (2011) Global influenza seasonality: reconciling patterns across temperate and tropical regions. *Environmental health perspectives* 119: 439.
28. Walker VP, Modlin RL (2009) The vitamin D connection to pediatric infections and immune function. *Pediatric research* 65: 106R–113R.
29. Cannell J, Vieth R, Umbau J, Holick M, Grant W, et al. (2006) Epidemic influenza and vitamin D. *Epidemiology and Infection* 134: 1129–1140.
30. Wayse V, Yousafzai A, Mogale K, Filteau S (2004) Association of subclinical vitamin D deficiency with severe acute lower respiratory infection in Indian children under 5 y. *European Journal of Clinical Nutrition* 58: 563–567.
31. Paynter S, Weinstein P, Ware R, Lucero M, Tallo V, et al. (2012) Sunshine, rainfall, humidity and child pneumonia in the tropics: time-series analyses. *Epidemiology and Infection* 1: 1–9.
32. Yusuf S, Piedimonte G, Auais A, Demmler G, Krishnan S, et al. (2007) The relationship of meteorological conditions to the epidemic activity of respiratory syncytial virus. *Epidemiology and Infection* 135: 1077–1090.
33. Vasickova P, Pavlik I, Verani M, Carducci A (2010) Issues concerning survival of viruses on surfaces. *Food and Environmental Virology* 2: 24–34.
34. Goldmann DA (2000) Transmission of viral respiratory infections in the home. *The Pediatric infectious disease journal* 19: S97–S102.