

Meta-analysis comparison of endoscopic papillary balloon dilatation and endoscopic sphincter papillotomy

Hong-Chuan Zhao, Liang He, Da-Chen Zhou, Xiao-Ping Geng, Fa-Ming Pan

Hong-Chuan Zhao, Liang He, Da-Chen Zhou, Xiao-Ping Geng, Department of General Surgery, the First Affiliated Hospital, Anhui Medical University, Hefei 230022, Anhui Province, China

Fa-Ming Pan, School of Public Health, Anhui Medical University, Hefei 230032, Anhui Province, China

Author contributions: Zhao HC and Geng XP designed the research; He L, Zhou DC and Zhao HC completed the literature searching; Pan FM, He L and Zhou DC analyzed the data; Zhao HC, He L and Zhou DC wrote the paper.

Correspondence to: Hong-Chuan Zhao, Associated Professor, Department of General Surgery, the First Affiliated Hospital, Anhui Medical University, 218 Jixi Road, Hefei 230022, Anhui Province, China. Zhzc0117@sina.com

Telephone: +86-551-62923191 Fax: +86-551-62922026

Received: January 3, 2013 Revised: March 20, 2013

Accepted: March 28, 2013

Published online: June 28, 2013

group were younger (OR = -1.16, 95%CI: -1.49 to 0.84, $P < 0.01$). There were no significant differences in gender proportion, average size of stones, number of gallstones, previous cholecystectomy, the incidence of duodenal diverticulum, CBD diameter or the total follow-up time between EST and EPBD groups. Compared with EST, the total stone clearance in the EPBD group decreased (OR = 0.64, 95%CI: 0.42 to 0.96, $P = 0.03$), the use of stone extraction baskets significantly increased (OR = 1.91, 95%CI: 1.41 to 2.59, $P < 0.01$), and the incidence of pancreatitis significantly increased (OR = 2.79, 95%CI: 1.74 to 4.45, $P < 0.0001$). The incidence of bleeding (OR = 0.12, 95%CI: 0.04 to 0.34, $P < 0.01$) and cholecystitis (OR = 0.41, 95%CI: 0.20 to 0.84, $P = 0.02$) significantly decreased. The stone recurrence rate also was significantly reduced in EPBD (OR = 0.48, 95%CI: 0.26 to 0.90, $P = 0.02$). There were no significant differences between the two groups with the incidence of stone removal at first attempt, hours of operation, total short-term complications and infection, perforation, or acute cholangitis.

CONCLUSION: Although the incidence of pancreatitis was higher, the overall stone clearance rate and risk of bleeding was lower with EPBD compared to EST.

© 2013 Baishideng. All rights reserved.

Key words: Common bile duct stone; Endoscopic papillary balloon dilatation; Endoscopic sphincter papillotomy; Meta-analysis

Core tip: A meta-analysis was performed to evaluate the outcomes of endoscopic sphincter papillotomy (EST) and endoscopic papillary balloon dilatation (EPBD) from previously published reports. Fourteen randomized trials involving 1975 patients were analyzed. Of those, 980 were treated with EPBD and 995 were treated with EST. Differences were observed between the treatments in total stone clearance, short-term complications, and long-term complications. Compared to

Abstract

AIM: To assess endoscopic papillary balloon dilatation (EPBD) and endoscopic sphincter papillotomy (EST) for common bile duct (CBD) stone removal using a meta-analysis.

METHODS: Randomized controlled trials published from 1990 to 2012 comparing EPBD with EST for CBD stone removal were evaluated. This meta-analysis was performed to estimate short-term and long-term complications of these two treatments. The fixed random effect model or random effect model was established to analysis the data. Results were obtained by analyzing the relative risk, odds ratio, and 95%CI for a given comparison using RevMan 5.1. Statistical significance was defined as $P < 0.05$. Risk of bias was evaluated using a funnel plot.

RESULTS: Of the 1975 patients analyzed, 980 of them were treated with EPBD and 995 were treated with EST. Of the patient population, patients in the EPBD

EST, the overall stone clearance rate was lower, and the incidence of pancreatitis was higher with EPBD. Thus, EPBD may decrease the incidence of long-term complications and be more suitable for patients who have a high risk of bleeding.

Zhao HC, He L, Zhou DC, Geng XP, Pan FM. Meta-analysis comparison of endoscopic papillary balloon dilatation and endoscopic sphincter papillotomy. *World J Gastroenterol* 2013; 19(24): 3883-3891 Available from: URL: <http://www.wjgnet.com/1007-9327/full/v19/i24/3883.htm> DOI: <http://dx.doi.org/10.3748/wjg.v19.i24.3883>

INTRODUCTION

Along with the advance of endoscope technology and related instruments, endoscopic sphincter papillotomy (EST) had become the first choice for common duct stones. But it was associated with some short-term and long-term complications such as pancreatitis, bleeding, cholangitis, perforation of the bile duct, narrow nipple, and sphincter loss of function. Endoscopic papillary balloon dilatation (EPBD), as a replacement for EST, was first reported by Staritz *et al*^[1]. Compared with EST, EPBD is a less complicated procedure, and the incidence of short-term complications, such as bleeding and perforation, are decreased, while the function of the Oddi sphincter (OS) is protected. In a multicenter random control study, 117 patients who were definitively diagnosed with bile duct stones were treated by EPBD; after treatment, the incidence of pancreatitis among those patients reached 15.4% and two patients died from post-treatment complications^[2]. Thus, a heated dispute still remains in the medical community as to the safety and application of EPBD. In the present study, a meta-analysis was performed to evaluate the curative effect and safety of EPBD relative to EST by systematically reviewing published randomized trials.

MATERIALS AND METHODS

Inclusion criteria

Only randomized controlled trials were considered for review, and no limitations were placed on the article language. In the included published studies, all cases were diagnosed with common duct stones and observational targets included at least one of the following criteria: (1) overall incidence of stone clearance, (2) incidence of a singular stone clearance, (3) incidence of short-term complications, or (4) incidence of long-term complications. EPBD was used as the experimental group while EST was used as the control group.

Search strategy

Studies were identified by searching MEDLINE, EMBASE, Cochrane library, Current Contents and the Science Citation Index in July 2012. Key search terms were “com-

mon bile duct stone”, “endoscopic retrograde cholangio-pancreatography”, “endoscopic sphincter papillotomy”, “endoscopic papillary balloon dilatation”, “endoscopic balloon dilatation”, “EST”, “ERCP”, “EPBD” and “EBD”. Additionally, articles were searched using Google in order to prevent any oversight.

Statistical analysis

Articles were retrieved when they met the inclusion criteria. Two reviewers (He L and Zhou DC) applied the inclusion criteria independently to the retrieved articles as defined in the protocol. Any differences were resolved by discussion. Each included study was critically evaluated for its study quality, based on the criteria used by the Cochrane Collaboration, and level of evidence according to the standards of the Hierarchy of Evidence. One reviewer (He L) extracted information on data extraction sheets and a second reviewer (Zhou DC) checked them.

All data were calculated using RevMan5.1. Relative risks (for dichotomous outcome measures), odds ratio (OR) and weighted mean differences (for continuous outcome measures) with 95%CI were calculated. Statistical significance was defined as $P < 0.05$. If the outcome could not be calculated or the incidence was too small, a qualitative evaluation was given by a detailed explanation. A heterogeneity test was conducted according to the value of I^2 , χ^2 and P . If heterogeneity was positive, then a sensitivity analysis was carried out. Any article that showed positive heterogeneity was excluded. Risk of bias was evaluated using a funnel plot.

RESULTS

After the initial screening, 178 relevant articles were considered for review. Of these, 163 articles were not in accordance with the defined inclusion criteria. Among the remaining 15 articles, one was excluded based on positive heterogeneity^[3]. A total of 14 articles were included in this meta-analysis with available data from 1975 patients summarized in Table 1^[4-16].

Based on results from the analysis of these randomized controlled trials, significant differences were only found in the comparison of mean patient age between the two groups. The average age in the EPBD group was significantly younger than in the EST group (OR = -1.16, 95%CI: -1.49 to -0.84, $P < 0.01$). There were no significant differences in other general characteristics, such as gender ratio (female ratio, OR = 1.10, 95%CI: 0.91 to 1.31, $P = 0.33$; male ratio, OR = 0.91, 95%CI: 0.76 to 1.09, $P = 0.91$), mean diameter of stones (OR = 0.04, 95%CI: -0.22 to 0.30, $P = 0.77$), number of stones (OR = 0.22, 95%CI: -0.11 to 0.46, $P = 0.06$), complicated cholecystolithiasis (OR = 1.13, 95%CI: 0.83 to 1.54, $P = 0.43$), prior-cholecystectomy (OR = 1.03, 95%CI: 0.81 to 1.31, $P = 0.80$), mean diameter of common bile duct (CBD) stones (OR = -0.21, 95%CI: -0.69 to 0.26, $P = 0.38$) or total follow-up time (OR = -0.05, 95%CI: -0.51 to 0.41, $P = 0.83$).

In addition, the analysis showed that there was no

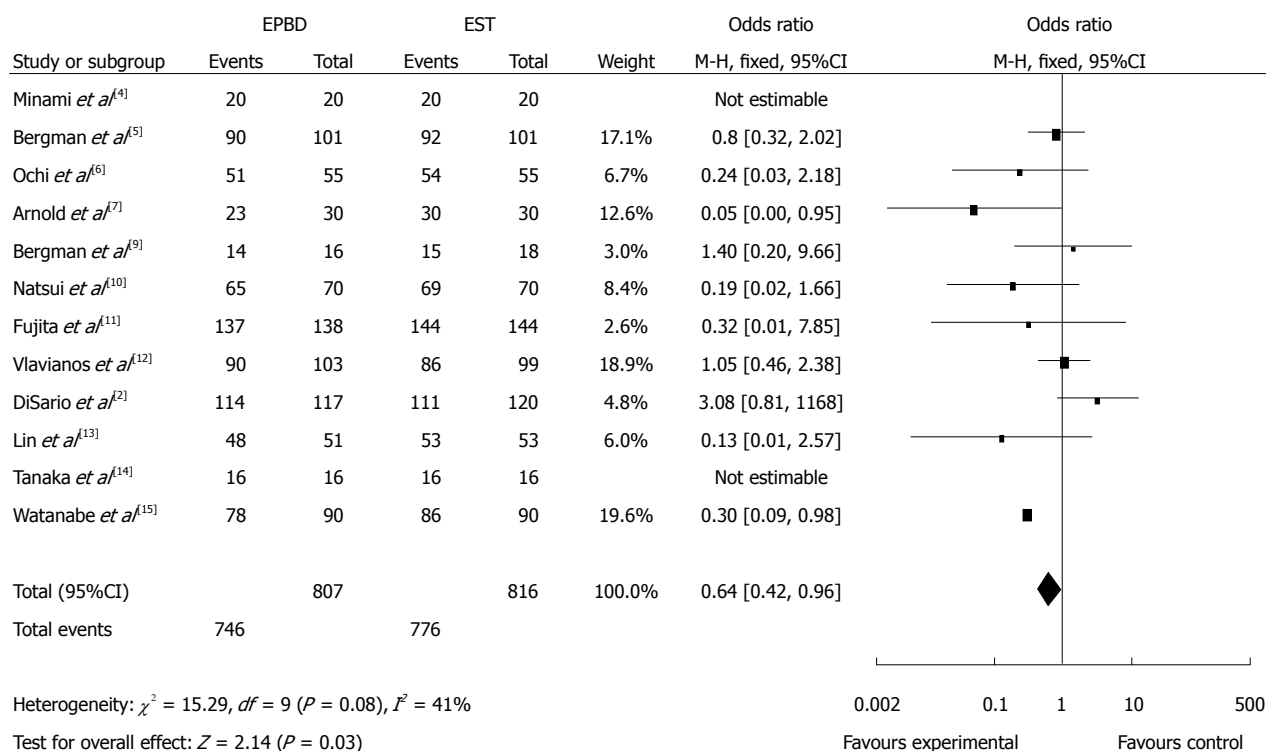


Figure 1 Comparison of total clearance of common bile duct stones between endoscopic papillary balloon dilatation (experimental group) and endoscopic sphincterotomy (control group). EPBD: Endoscopic papillary balloon dilatation; EST: Endoscopic sphincterotomy.

significant difference in the incidence of stone clearance on the first attempt between the survey groups (OR = 0.82, 95%CI: 0.63 to 1.07, $P = 0.15$). Relative to EST, the EPBD procedure was associated with a higher incidence of total clearance of CBD stones (Figure 1; OR = 0.64, 95%CI: 0.42 to 0.96, $P = 0.03$) and with more frequent stone extraction basket use (OR = 1.91, 95%CI: 1.41 to 2.59, $P < 0.01$). There were no significant differences in operation times between the two groups (OR = -0.62, 95%CI: -1.73 to 0.48, $P = 0.27$).

Incidence of short-term complications

Our results show that there was no significant difference in the overall incidence of early complications (OR = 1.33, 95%CI: 0.96 to 1.85, $P = 0.09$). Among the included randomized controlled trials, 11 studies reported the incidence of pancreatitis. Analysis of the data indicated that EPBD increased the incidence of pancreatitis when compared to EST in Western patients (OR = 4.05, 95%CI: 2.06 to 7.94, $P < 0.0001$), but was not significantly different in Asian patients ($P = 0.08$). In a combined analysis of Western and Asian studies, the incidence of pancreatitis was significantly increased in patients who received EPBD treatment (Figure 2A; OR = 2.79, 95%CI: 1.74 to 4.45, $P < 0.0001$).

There were nine studies that reported incidences of bleeding. The analysis showed that the incidence of bleeding in the EPBD group was lower than that of the EST group (Figure 2B; OR = 0.12, 95%CI: 0.04 to 0.34, $P < 0.01$). There was no significant difference in incidence of infection between EPBD and EST (OR = 0.85, 95%CI:

0.46 to 1.56, $P = 0.59$). Likewise, there was no significant difference in the incidence of perforation between EPBD and EST (OR = 0.77, 95%CI: 0.17 to 3.50, $P = 0.73$).

Incidence of long-term complications

Six of the included studies reported incidences of long-term complications. Overall, the results of our analysis indicated that this incidence was significantly lower if patients were treated by EPBD rather than by EST (Figure 3A; OR = 0.53, 95%CI: 0.36 to 0.77, $P = 0.0008$). Compared to EST, EPBD markedly decreased the incidence of acute cholecystitis (OR = 0.41, 95%CI: 0.20 to 0.84, $P = 0.02$), although there was no significant difference between EPBD and EST in the incidence of acute cholangitis (OR = 0.60, 95%CI: 0.18 to 1.95, $P = 0.39$). Among the included studies, only seven reported recurrence of CBD stones, and our analysis showed that there was no significant difference between EPBD and EST (Figure 3B; OR = 0.66, 95%CI: 0.42 to 1.05, $P = 0.08$). Further analysis of the studies with a follow-up of more than one year indicated that the stone recurrence rate decreased significantly in the EPBD group (Figure 4; OR = 0.48, 95%CI: 0.26 to 0.90, $P = 0.02$).

Study assessment

A funnel plot analysis (Figure 5) was symmetrical on the whole, demonstrating that there was no significant publication bias. In addition, the included studies were of high quality and generally had a low risk of bias for selection, performance, attrition, and reporting as seen in Figure 6.

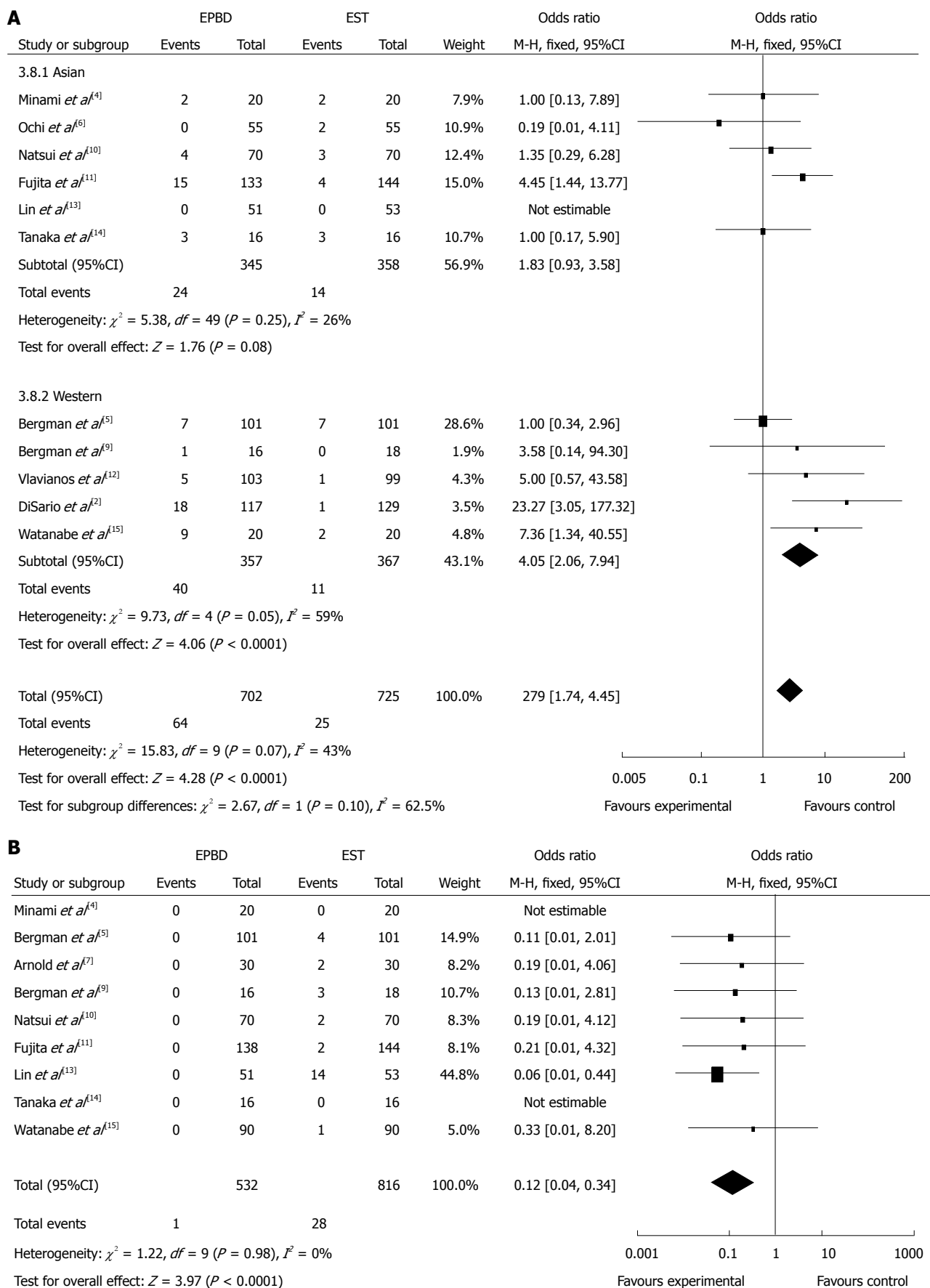


Figure 2 Incidence of pancreatitis (A) and bleeding (B) between endoscopic papillary balloon dilatation and endoscopic sphincter papillotomy. EPBD: Endoscopic papillary balloon dilatation; EST: Endoscopic sphincter papillotomy.

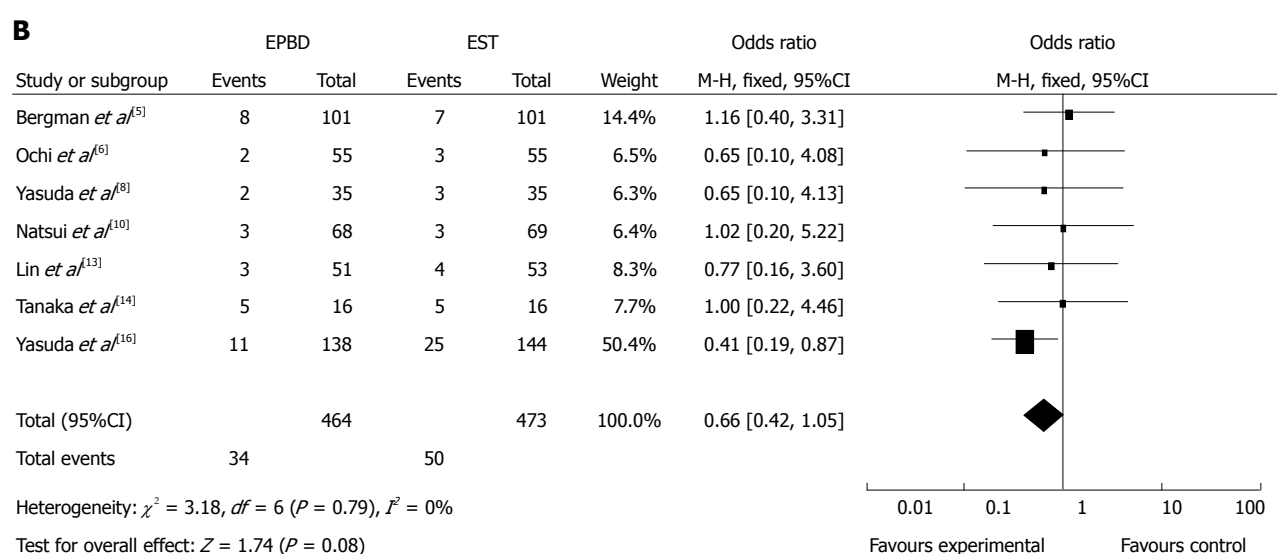
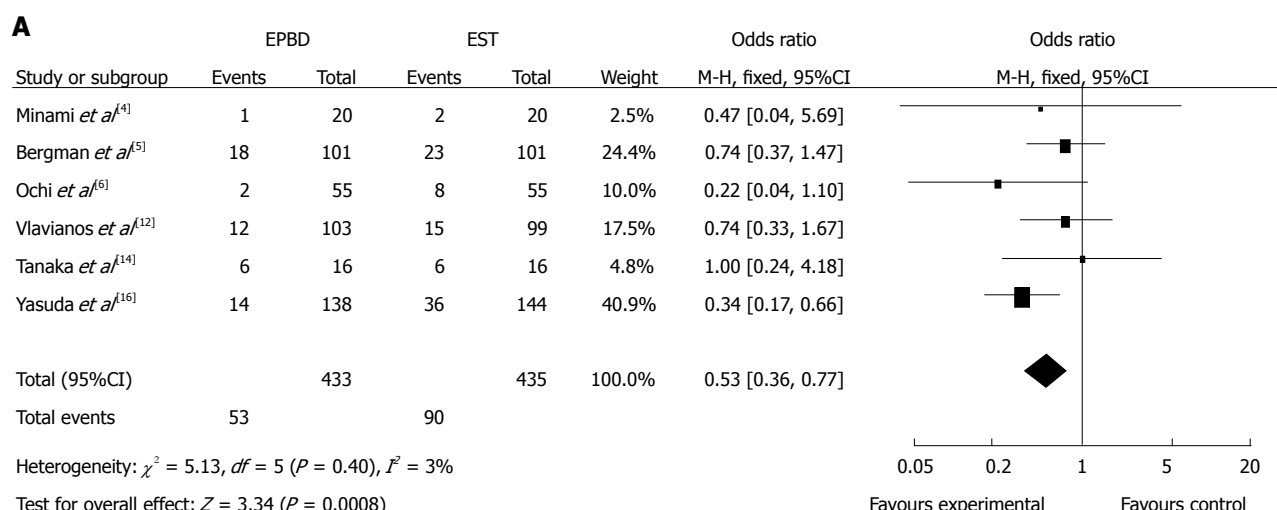


Figure 3 Overall incidence of long-term complications (A) and bile duct stone recurrence rate (B) between endoscopic papillary balloon dilatation and endoscopic sphincter papillotomy. EPBD: Endoscopic papillary balloon dilatation; EST: Endoscopic sphincter papillotomy.

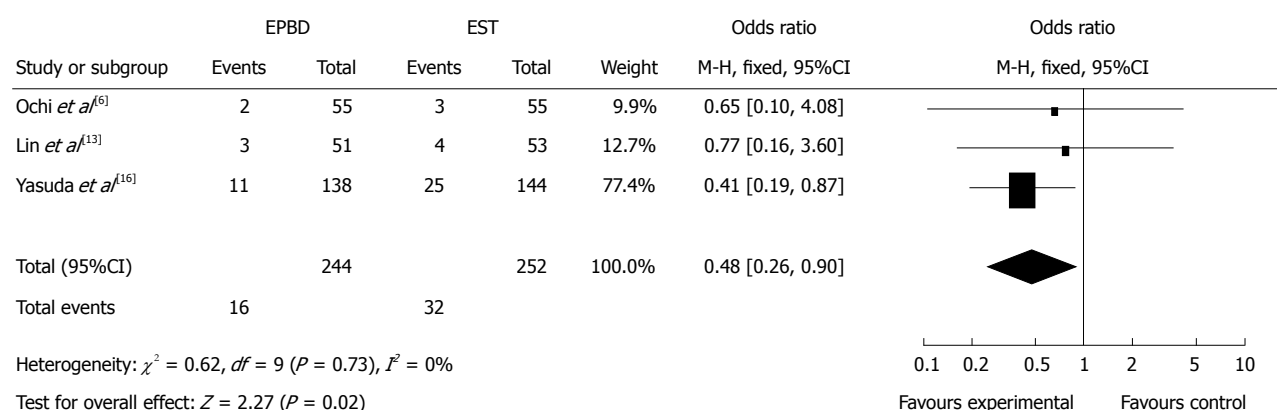


Figure 4 Incidence of bile duct stone recurrence rate between endoscopic papillary balloon dilatation and endoscopic sphincter papillotomy with a follow-up of more than one year. EPBD: Endoscopic papillary balloon dilatation; EST: Endoscopic sphincter papillotomy.

However, allocation concealment was only performed in the 5 studies^[5,9,12,15,16]. Some outcomes were reported based on the intention to treat using assigned randomization at the beginning of the study^[5,9,11,12,15]. In other

studies, there was no detail given about randomization. A double-blinding method was not applied in any of the included studies. The main observational outcomes reported were the overall clearance of stones and stone

Table 1 Overview of study characteristics (mean ± SD)

Ref.	Year	Country	Treatment	Case	Sex	Age (yr)	MFT (mo)	Diameter of stones (mm)	No. of stones	Jadad grade
Minami <i>et al</i> ^[4]	1995	Japan	EPBD	20	13/7	64.0 ± 11.2	21.5 ± 6.2	< 12	No data	4 score
			EST	20	9/11	71.3 ± 14.0	23.1 ± 5.0	< 12		
Bergman <i>et al</i> ^[5]	1997	Holland	EPBD	101	43/58	72.0 ± 11.8	6.2	10.0 ± 5.5	2.0 ± 2.2	6 score
			EST	101	45/56	71.0 ± 11.1	6.1	9.0 ± 3.5	1.0 ± 2.3	
Ochi <i>et al</i> ^[6]	1999	Japan	EPBD	55	34/21	62.6 ± 15.9	23.0 ± 6.3	8.1 ± 3.4	2.1 ± 1.9	4 score
			EST	55	31/24	66.3 ± 14.3	23.0 ± 6.3	8.8 ± 4.2	1.7 ± 1.2	
Arnold <i>et al</i> ^[7]	2001	Germany	EPBD	30	11/19	54.2 ± 18.5	No data	7.0 ± 3.5	1.6 ± 1.1	4 score
			EST	30	13/17	58.5 ± 18.5		10.0 ± 4.7	1.8 ± 1.5	
Yasuda <i>et al</i> ^[8]	2001	Japan	EPBD	35	19/16	69.5 ± 7.3	No data	12.4 ± 3.3	3.7 ± 2.5	4 score
			EST	35	14/21	69.4 ± 7.5		12.3 ± 3.2	3.3 ± 2.5	
Bergman <i>et al</i> ^[9]	2001	Holland	EPBD	16	12/4	73.0 ± 6.8	No data	9.0 ± 2.8	2.0 ± 1.5	6 score
			EST	18	18/0	72.0 ± 2.8		8.0 ± 2.0	2.0 ± 1.5	
Natusi <i>et al</i> ^[10]	2002	Japan	EPBD	70	33/37	64.5 ± 10.6	No data	9.2 ± 3.2	2.7 ± 2.3	4 score
			EST	70	33/37	67.1 ± 8.3		9.7 ± 2.3	2.6 ± 2.3	
Fujita <i>et al</i> ^[11]	2003	Japan	EPBD	138	75/63	66.8 ± 1.3	No data	7.0 ± 3.1	2.4 ± 2.5	5 score
			EST	144	92/52	61.9 ± 1.2		7.7 ± 3.4	2.4 ± 2.9	
			EST	99	35/64	62.0 ± 1.2				
Disario <i>et al</i> ^[2]	2004	United States	EPBD	117	76/41	47.0 ± 19.0	1.6 ± 2.9	6.0 ± 1.6	1.0 ± 16.5	6 score
			EST	120	89/31	54.0 ± 19.0	1.6 ± 0.4	5.0 ± 2.3	1.0 ± 1.5	
Lin <i>et al</i> ^[13]	2004	Taiwan (China)	EPBD	51	28/23	64.0 ± 10.3	16.0 ± 3.0	8 ± 6	No data	4 score
			EST	53	31/22	65.0 ± 10.0	16.0 ± 3.0	8 ± 6		
Tanaka <i>et al</i> ^[14]	2004	Japan	EPBD	16	10/6	67.2 ± 4.7	No data	10.2 ± 3.5	2.0 ± 1.8	5 score
			EST	16	3/13	70.6 ± 6.3		12.4 ± 6.0	2.0 ± 0.5	
Watanabe <i>et al</i> ^[15]	2007	Japan	EPBD	90	51/39	69.1 ± 13.1	No data	8.1 ± 3.2	2.7 ± 2.8	4 score
			EST	90	49/41	70.2 ± 8.1		7.7 ± 2.3	2.5 ± 2.7	
Yasuda <i>et al</i> ^[16]	2010	Japan	EPBD	138	52/92	68.5 ± 11.2	80.3 ± 15.0	6.5 ± 2.1	1.0 ± 2.5	5 score
			EST	144	63/75	71.0 ± 10.3	81.6 ± 15.2	7.0 ± 2.3	1.0 ± 3.8	

M: Male; F: Female; MFT: Mean follow-up time; MD: Mean diameter; EPBD: Endoscopic papillary balloon dilatation; EST: Endoscopic sphincterotomy.

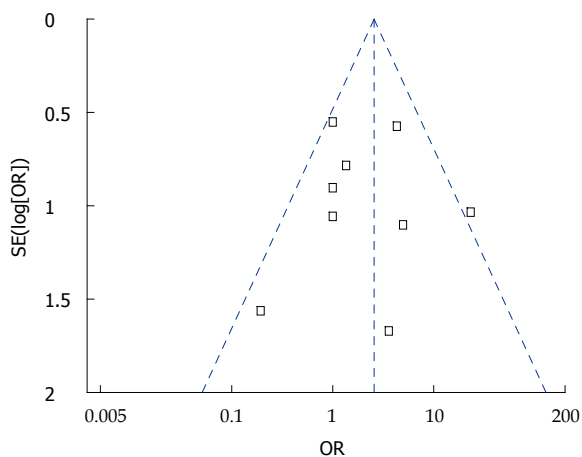


Figure 5 Funnel plot analysis of included studies. X-axis [Peto odds ratio (OR)] represents treatment effects. Y-axis (log[Peto OR]) represents the large sample size. Each square represents an individual study. The dashed line represents 95% CI.

clearance at the first attempt, both of which were reported by all studies. Completed data for the other outcomes was not available.

DISCUSSION

Meta-analysis is an accepted method that can evaluate controversial issues met in clinical practice, by analyzing

high quality randomized controlled trials in quantification. Studies from many different countries were included in this analysis, and the differences between EPBD and EST were evaluated systematically to produce meaningful results.

The results indicated that EST increased the overall clearance of stones compared to EPBD, but that the stone clearance at first attempt was similar. It is generally acknowledged that EPBD is less likely to clear big stones than EST because its inflation into the papilla is smaller. In our analysis, however, we have defined the stone diameter as part of the exclusion criteria. Some studies were excluded if the smallest stone was larger than 12 mm^[4], 15 mm^[6], 20 mm^[7], or 14 mm^[11]. Two studies were excluded because the total number of stones was more than 10^[6] or 5^[7]. Stone extraction basket usage was more frequent when patients were treated with EPBD than EST, especially when the diameter of stones was larger than 8 mm^[4], 10 mm^[5,6], or 12 mm^[10].

In the matter of safety, our results suggest that there was no significant difference in short-term complications between EPBD and EST. However, the incidence of long-term pancreatitis was higher after EPBD. This phenomenon may be due to the poor outflow of pancreatic juice caused by hydrops or spasm of the OS after EPBD. The risk of pancreatitis after EPBD is also a highly disputed issue, especially in America. EPBD has been abandoned by many endoscope doctors because they believe

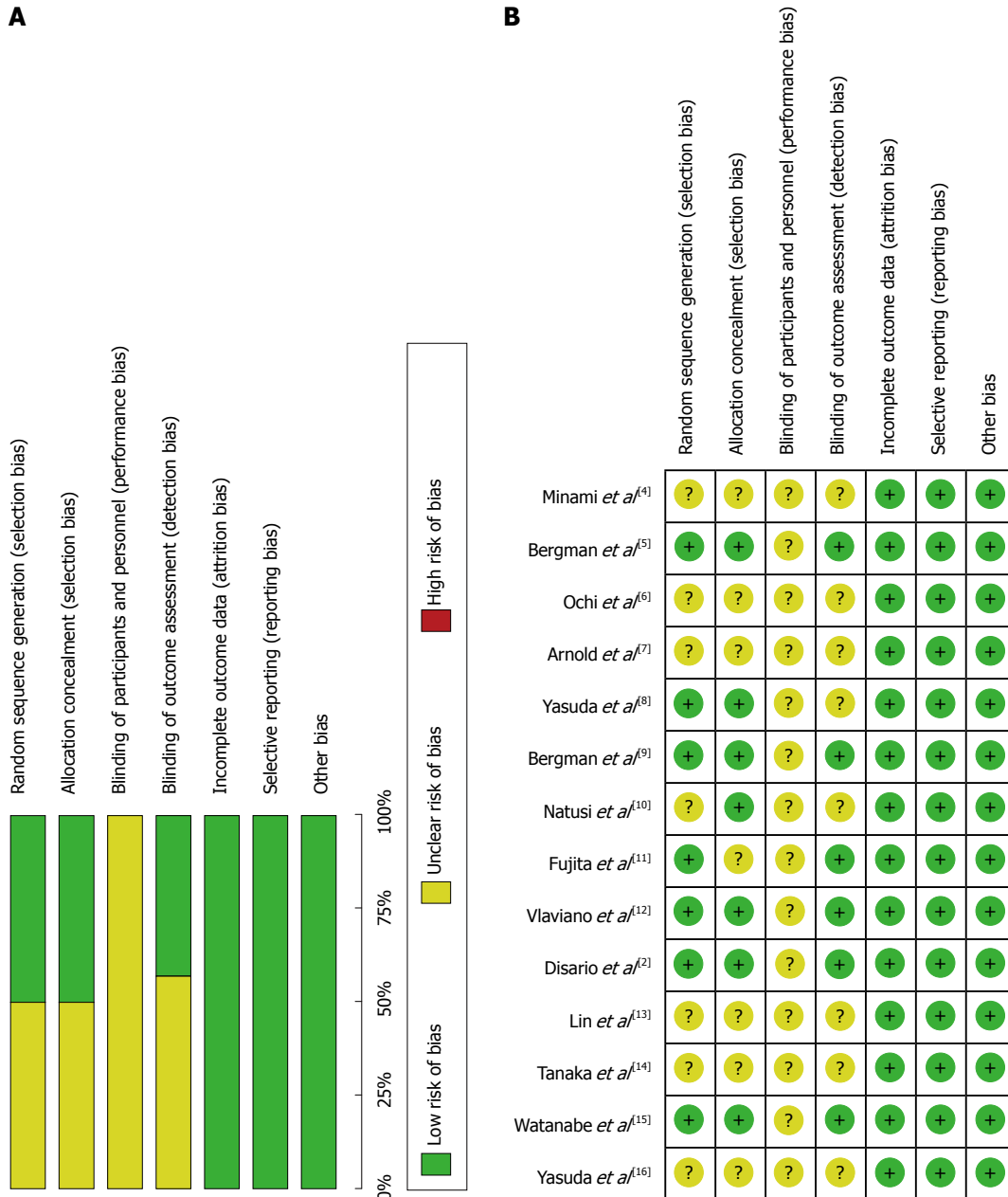


Figure 6 Risk of bias summary (A) and bias assessment for each individual study (B).

that this technology increases risk of long-term pancreatitis^[17]. Conversely, most researchers in Asia and Europe maintain that there is no direct consequence between pancreatitis risk and EPBD and report that pancreatitis usually occurs in the light or medium stage^[5,6,10,13,14]. A retrospective study by Tsujino *et al*^[18] showed that among 1000 patients treated by EPBD, only 48 of them (4.8%) experienced light to moderate pancreatitis and only one patient (0.1%) experienced serious pancreatitis, but was fully recovered 8 mo after treatment.

Compared to EST, the incidence of bleeding during operation was significantly lower in EPBD, possibly due to the protection of the sphincter of Oddi during EPBD that is not incised directly as in EST. This advantage promotes the application of EPBD for patients with poor blood clotting abilities. A previous study of 98 patients

who were diagnosed with CBD stones experiencing liver cirrhosis was carried out by Tsujino *et al*^[18]. In that report, bleeding only occurred in one patient after the EPBD procedure, even though 31 of these patients were in C-stage of Child-Pugh. Moreover, when faced with atypical anatomy, such as duodenal diverticulum or Billroth-II gastrectomy history, EPBD is more suitable than EST because EPBD can expand the OS more easily. In addition, Bergman *et al*^[9] has reported that for patients with Billroth-II gastrectomy history, the amount of bleeding was significantly decreased after EPBD (EPBD *vs* EST: 2% *vs* 17%, *P* = 0.03).

Based on the results of this analysis, compared to EST, EPBD decreased the incidence of long-term cholecystitis and the recurrence of stones in CBD, but there were no significant differences in the duration of long-

term cholangitis or recurrence of stones. Some research has suggested that EST could lead to some serious side effects, such as exhaustive, non-reversible loss of function of the OS, although pneumobilia and bile regurgitation exists in nearly 50% of patients and biliary bacterial disease exists in nearly all patients^[19]. Some complications may be continuously affected by these conditions, such as with acute cholecystitis and cholangitis. Our analysis showed discordant results with long-term cholangitis, but this may be due to the limited sample size and short follow-up.

A study by Natsui *et al.*^[20] determined that EST was correlated with bacterial colonization in bile duct, which could lead to chronic inflammation and fibrosis of the bile duct system. Research by Kurumado *et al.*^[21] suggested that destruction of the sphincter of Oddi could even increase the risk of bile duct cancer. A retrospective study by Kojima *et al.*^[22] found that recurrence of CBD stones was higher after EST than EPBD (17.0% *vs* 6.8%, $P < 0.05$), and the sphincter of Oddi function was protected in 70% patients after EPBD, decreasing the recurrence of stones. Another study reported an 8.8% recurrence rate of stones in 837 patients after 4.4 years of follow-up where mechanical lithotripsy usage and subsequent cholelithiasis were considered risk factors for recurrence^[18].

This meta-analysis was limited by two factors. First, there was some study selection bias that could not be excluded easily. Secondly, the definition of short-term and long-term complications was not completely consistent. For example, complications that occurred during 24 h^[12], 15 d^[9,14], and 30 d^[2] were all included in short-term complications, while long-term complications included 6 mo^[5], 12 mo^[8,12], 16 mo^[13], 23 mo^[6], 30 mo^[4,10], 72 mo^[14], and 81 mo^[16]. These uncontrollable factors may have affected the accuracy of this study to some extent.

In summary, in a comparison of the two treatments, EPBD and EST, the overall stone clearance rate of EPBD was lower and the incidence of pancreatitis with EPBD was higher. EPBD has the advantage of decreasing the incidence of long-term complications, and for patients who have a high risk of bleeding, EPBD may be more suitable.

COMMENTS

Background

To date, endoscopic sphincterotomy (EST) and endoscopic papillary balloon dilatation (EPBD) are the primary choices for the removal of common duct stones. As a replacement for EST, EPBD is a less complicated procedure, has fewer short-term complications, such as bleeding and perforation, and protects the function of the Oddi sphincter. However, a heated debate still remains as to which is the better procedure.

Research frontiers

In this report, a meta-analysis was performed to evaluate the curative effects and safety of EST and EPBD by systematically reviewing newly published randomized trials.

Innovations and breakthroughs

The meta-analysis showed that in comparison with EST, patients in the EPBD group were younger (OR = -1.16, 95%CI: -1.49 to -0.84, $P < 0.01$), had lower

rate of total stone clearance (OR = 0.64, 95%CI: 0.42 to 0.96, $P = 0.03$), had a greater use of stone extraction baskets (OR = 1.91, 95%CI: 1.41 to 2.59, $P < 0.01$), experienced a higher incidence of pancreatitis (OR = 2.53, 95%CI: 1.55 to 4.13, $P = 0.0002$) and a significantly lower incidence of bleeding (OR = 0.12, 95%CI: 0.04 to 0.34, $P < 0.01$) and acute cholecystitis (OR = 0.41, 95%CI: 0.20 to 0.84, $P = 0.02$). The total long-term complication rate was also significantly reduced in the EPBD group (OR = 0.53, 95%CI: 0.36 to 0.77, $P = 0.0008$). These findings also suggest that in patients who experience a greater risk of bleeding, EPBD may be more suitable.

Applications

A greater understanding of the advantages and disadvantages of EST and EPBD treatments for the removal of common biliary duct stones allows clinicians to make appropriate treatment decisions for patients.

Peer review

The authors performed a systematic meta-analysis to investigate the curative effect and safety between EST and EPBD. Compared with EST, in spite of the overall stone clearance rate of EPBD is lower, and the incidence of pancreatitis in the EPBD is higher. EPBD has the advantages to decrease the incidence of long-term complications. For patients experiencing a greater risk of bleeding, EPBD may be more suitable.

REFERENCES

- 1 Staritz M, Ewe K, Meyer zum Büschenfelde KH. Endoscopic papillary dilation (EPD) for the treatment of common bile duct stones and papillary stenosis. *Endoscopy* 1983; **15** Suppl 1: 197-198 [PMID: 6872989 DOI: 10.1055/s-2007-1021507]
- 2 Disario JA, Freeman ML, Bjorkman DJ, Macmathuna P, Petersen BT, Jaffe PE, Morales TG, Hixson LJ, Sherman S, Lehman GA, Jamal MM, Al-Kawas FH, Khandelwal M, Moore JP, Derfus GA, Jamidar PA, Ramirez FC, Ryan ME, Woods KL, Carr-Locke DL, Alder SC. Endoscopic balloon dilation compared with sphincterotomy for extraction of bile duct stones. *Gastroenterology* 2004; **127**: 1291-1299 [PMID: 15520997 DOI: 10.1053/j.gastro.2004.07.017]
- 3 Yu T, Liu L, Chen J, Li YQ. [A comparison of endoscopic papillary balloon dilation and endoscopic sphincterotomy for the removal of common bile duct stones]. *Zhonghua Neike Zazhi* 2011; **50**: 116-119 [PMID: 21418830 DOI: 10.3760/cma.j.issn.0578-1426.2011.02.008]
- 4 Minami A, Nakatsu T, Uchida N, Hirabayashi S, Fukuma H, Morshed SA, Nishioka M. Papillary dilation vs sphincterotomy in endoscopic removal of bile duct stones. A randomized trial with manometric function. *Dig Dis Sci* 1995; **40**: 2550-2554 [PMID: 8536511 DOI: 10.1007/BF02220440]
- 5 Bergman JJ, Rauws EA, Fockens P, van Berkel AM, Bossuyt PM, Tijssen JG, Tytgat GN, Huibregtse K. Randomised trial of endoscopic balloon dilation versus endoscopic sphincterotomy for removal of bile duct stones. *Lancet* 1997; **349**: 1124-1129 [PMID: 9113010 DOI: 10.1016/S0140-6736(96)11026-6]
- 6 Ochi Y, Mukawa K, Kiyosawa K, Akamatsu T. Comparing the treatment outcomes of endoscopic papillary dilation and endoscopic sphincterotomy for removal of bile duct stones. *J Gastroenterol Hepatol* 1999; **14**: 90-96 [PMID: 10029284 DOI: 10.1046/j.1440-1746.1999.01798.x]
- 7 Arnold JC, Benz C, Martin WR, Adamek HE, Riemann JF. Endoscopic papillary balloon dilation vs. sphincterotomy for removal of common bile duct stones: a prospective randomized pilot study. *Endoscopy* 2001; **33**: 563-567 [PMID: 11473325 DOI: 10.1055/s-2001-15307]
- 8 Yasuda I, Tomita E, Enya M, Kato T, Moriwaki H. Can endoscopic papillary balloon dilation really preserve sphincter of Oddi function? *Gut* 2001; **49**: 686-691 [PMID: 11600473 DOI: 10.1136/gut.49.5.686]
- 9 Bergman JJ, van Berkel AM, Bruno MJ, Fockens P, Rauws EA, Tijssen JG, Tytgat GN, Huibregtse K. A randomized trial of endoscopic balloon dilation and endoscopic sphincterotomy for removal of bile duct stones in patients with a

- prior Billroth II gastrectomy. *Gastrointest Endosc* 2001; **53**: 19-26 [PMID: 11154484 DOI: 10.1067/mge.2001.110454]
- 10 **Natsui M**, Narisawa R, Motoyama H, Hayashi S, Seki K, Wakabayashi H, Itoh S, Asakura H. What is an appropriate indication for endoscopic papillary balloon dilation? *Eur J Gastroenterol Hepatol* 2002; **14**: 635-640 [PMID: 12072597 DOI: 10.1097/00042737-200206000-00008]
 - 11 **Fujita N**, Maguchi H, Komatsu Y, Yasuda I, Hasebe O, Igarashi Y, Murakami A, Mukai H, Fujii T, Yamao K, Maeshiro K. Endoscopic sphincterotomy and endoscopic papillary balloon dilatation for bile duct stones: A prospective randomized controlled multicenter trial. *Gastrointest Endosc* 2003; **57**: 151-155 [PMID: 12556774 DOI: 10.1067/mge.2003.56]
 - 12 **Vlavianos P**, Chopra K, Mandalia S, Anderson M, Thompson J, Westaby D. Endoscopic balloon dilatation versus endoscopic sphincterotomy for the removal of bile duct stones: a prospective randomised trial. *Gut* 2003; **52**: 1165-1169 [PMID: 12865276 DOI: 10.1136/gut.52.8.1165]
 - 13 **Lin CK**, Lai KH, Chan HH, Tsai WL, Wang EM, Wei MC, Fu MT, Lo CC, Hsu PI, Lo GH. Endoscopic balloon dilatation is a safe method in the management of common bile duct stones. *Dig Liver Dis* 2004; **36**: 68-72 [PMID: 14971818 DOI: 10.1016/j.dld.2003.09.014]
 - 14 **Tanaka S**, Sawayama T, Yoshioka T. Endoscopic papillary balloon dilation and endoscopic sphincterotomy for bile duct stones: long-term outcomes in a prospective randomized controlled trial. *Gastrointest Endosc* 2004; **59**: 614-618 [PMID: 15114302 DOI: 10.1016/S0016-5107(04)00157-9]
 - 15 **Watanabe H**, Yoneda M, Tominaga K, Monma T, Kanke K, Shimada T, Terano A, Hiraishi H. Comparison between endoscopic papillary balloon dilatation and endoscopic sphincterotomy for the treatment of common bile duct stones. *J Gastroenterol* 2007; **42**: 56-62 [PMID: 17322994 DOI: 10.1007/s00535-006-1969-9]
 - 16 **Yasuda I**, Fujita N, Maguchi H, Hasebe O, Igarashi Y, Murakami A, Mukai H, Fujii T, Yamao K, Maeshiro K, Tada T, Tsujino T, Komatsu Y. Long-term outcomes after endoscopic sphincterotomy versus endoscopic papillary balloon dilation for bile duct stones. *Gastrointest Endosc* 2010; **72**: 1185-1191 [PMID: 20869711 DOI: 10.1016/j.gie.2010.07.006]
 - 17 **Weinberg BM**, Shindy W, Lo S. Endoscopic balloon sphincter dilation (sphincteroplasty) versus sphincterotomy for common bile duct stones. *Cochrane Database Syst Rev* 2006; (4): CD004890 [PMID: 17054222 DOI: 10.1002/14651858.CD004890.pub2]
 - 18 **Tsujino T**, Kawabe T, Komatsu Y, Yoshida H, Isayama H, Sasaki T, Kogure H, Togawa O, Arizumi T, Matsubara S, Ito Y, Nakai Y, Yamamoto N, Sasahira N, Hirano K, Toda N, Tada M, Omata M. Endoscopic papillary balloon dilatation for bile duct stone: immediate and long-term outcomes in 1000 patients. *Clin Gastroenterol Hepatol* 2007; **5**: 130-137 [PMID: 17234559 DOI: 10.1016/j.cgh.2006.10.013]
 - 19 **Seifert E**. Long-term follow-up after endoscopic sphincterotomy (EST). *Endoscopy* 1988; **20** Suppl 1: 232-235 [PMID: 3168952 DOI: 10.1055/s-2007-1018182]
 - 20 **Natsui M**, Honma T, Genda T, Nakadaira H. Effects of endoscopic papillary balloon dilation and endoscopic sphincterotomy on bacterial contamination of the biliary tract. *Eur J Gastroenterol Hepatol* 2011; **23**: 818-824 [PMID: 21730870 DOI: 10.1097/MEG.0b013e328348c0bf]
 - 21 **Kurumado K**, Nagai T, Kondo Y, Abe H. Long-term observations on morphological changes of choledochal epithelium after choledochostomy in rats. *Dig Dis Sci* 1994; **39**: 809-820 [PMID: 8149847 DOI: 10.1007/BF02087428]
 - 22 **Kojima Y**, Nakagawa H, Miyata A, Hirai T, Ohyama I, Okada A, Hiramatsu T, Ohhara Y, Kuwahara T. Long-term prognosis of bile duct stones: endoscopic papillary balloon dilatation versus endoscopic sphincterotomy. *Dig Endosc* 2010; **22**: 21-24 [PMID: 20078660 DOI: 10.1111/j.1443-1661.2009.00913.x]

P- Reviewer Kim JH S- Editor Huang XZ
L- Editor A E- Editor Xiong L

