

Conjunctival biopsies and ophthalmic lesions: A histopathologic study in eastern India

Santosh K. Mondal, Dipanwita R. Nag, Ranjana Bandyopadhyay¹, Anindya Adhikari, Subhalakshmi Mukhopadhyay
Department of Pathology, Medical College, Kolkata, ¹Department of Pathology, Malda Medical College, West Bengal, India

Background: The conjunctiva is a thin and flexible mucus membrane that provides a protective barrier to the eye. Very few histopathologic studies have been conducted on conjunctival biopsies in eastern India. **Materials and Methods:** 120 conjunctival biopsies from 117 patients (76 males, 41 females) received during 8 years (January 2003–December 2010) were included in this study. **Results:** Histologic diagnoses were: degenerative lesions in 38 cases (31.66%), benign epithelial lesions in 23 cases (19.16%), premalignant and malignant epithelial lesions in 27 cases (22.5%), melanocytic lesions in 10 cases (8.33%), lymphoid in 7 cases (5.83%), and miscellaneous in 15 cases (12.5%). **Conclusion:** Squamous papilloma was the commonest benign tumor, whereas the commonest malignant tumor was squamous cell carcinoma. Melanocytic lesions were less prevalent compared to other/western studies.

Key words: Conjunctiva, different lesions, histopathology

INTRODUCTION

The conjunctiva is a thin and flexible mucus membrane that extends from the internal surface of the eyelid (palpebral conjunctiva) to the fornix and the anterior surface of the ocular globe (bulbar conjunctiva) up to the sclerocorneal limbus (limbal conjunctiva). Its functions include contributing to the precorneal lacrimal film by means of producing the mucus layer and providing a protective barrier for infections and foreign bodies.^[1]

Conjunctival tumors comprise a large variety of conditions from benign lesions such as squamous papilloma, or nevus, to malignant lesions such as melanoma or squamous cell carcinoma (SCC) which may cause visual loss. So, early diagnosis by conjunctival biopsies and treatment are essential to prevent ocular and systemic spread and to preserve visual function.

MATERIALS AND METHODS

The study was conducted in our tertiary care hospital which has a Regional Institute of Ophthalmology (RIO) and is situated in eastern India. All conjunctival biopsies

received in the Department of Pathology during an 8-year period (from January 2003 to December 2010) were included in this histopathologic study. A total of 117 patients comprising 76 males and 41 females having conjunctival lesions were studied and histologic diagnoses were given. Three patients had bilateral conjunctival lesions (two males and one female). All the relevant information about the patients was collected from outpatient department tickets and case sheets. Most of the patients (80/117) were adults (>18 years), while pediatric and adolescent (<18 years) patients were 17 and elderly patients (>60 years) were 20 in number. All the tissues were fixed properly and macroscopic features were noted. After processing, paraffin sections were cut at 4–5 mm thickness and stained with Hematoxylin and Eosin stain routinely. Special stains like Periodic Acid Schiff (PAS), Masson–Fontana, and reticulin stain were used whenever necessary. Immunohistochemistry (IHC) was helpful in some of the cases to confirm histologic diagnosis.

Histologically, all the conjunctival lesions were divided into six subgroups, viz. degenerative lesion, benign epithelial lesion, premalignant and malignant epithelial, melanocytic, lymphoid, and miscellaneous lesion.

RESULTS

In this study, we received an unequal representation of male and female patients (76 vs. 41) with a male:female ratio of 1.85:1. A total of 120 conjunctival biopsies from 117 patients were analyzed with three bilateral cases. Table 1 shows the anatomic location and histologic subgroup of conjunctival lesions. Bulbar conjunctiva (limbal and extralimbal) was the commonest location

Access this article online	
Quick Response Code:	Website:
	www.journals.mui.ac.ir/jrms
	DOI:

Address for correspondence: Dr. Santosh Kumar Mondal, "Teenjanya Complex," Flat 1B, Block B, 204 R N Guha Road, Dumdum, Kolkata – 700028, India. E-mail: dr_santoshkumar@hotmail.com

Received: 01-01-2012; **Revised:** 05-06-2012; **Accepted:** 26-06-2012

for conjunctival lesions (101 cases), followed by palpebral conjunctiva (12 cases) and fornix (5 cases). Lesions were more common in extralimbal than limbal conjunctiva (72 cases vs. 29 cases). Diffuse involvement of conjunctiva was uncommon and we received only two such cases. Although degenerative, epithelial, and melanocytic lesions were commonly found in bulbar conjunctiva [Figures 1 and 2], these lesions were rare in palpebral conjunctiva. Common lesions found in palpebral conjunctiva were granulation tissue, vascular neoplasm, and rhinosporidiosis. One each case of lymphoma and SCC diffusely involved the bulbar fornix and palpebral conjunctiva. In the fornix, no degenerative or melanocytic lesion was observed in the present study.

Distribution of cases according to specific histologic diagnosis and percentage of each category are listed in Table 2. Commonest lesion was degenerative (31.66%), followed by premalignant and malignant epithelial neoplasm (22.5%), miscellaneous group (12.5%), benign epithelial (19.6%), melanocytic lesion (8.33%), and lymphoid (5.83%). Pterygium was a more common degenerative disease than pingueculum. Among the malignant lesions, SCC was the commonest (9 cases), followed by non-Hodgkin's lymphoma (NHL; 2 cases) [Figure 3].

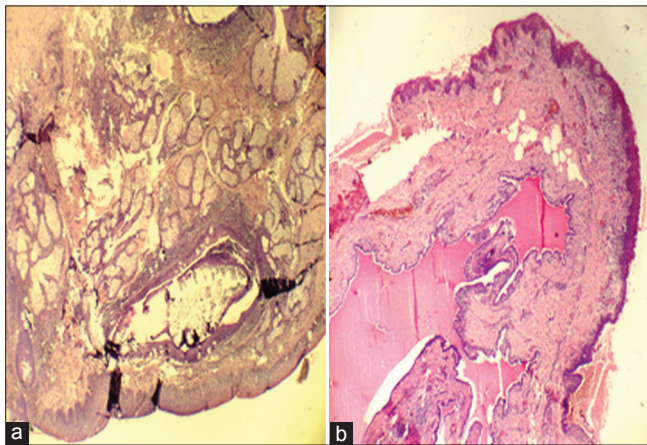


Figure 1: (a) Photomicrograph showing dermoid cyst (benign cystic teratoma) in conjunctiva. There are squamous epithelium and adnexal glands including sebaceous glands in the subepithelial layer (Hematoxylin and Eosin, x100) (b) Photomicrograph showing epithelial inclusion cyst. A cystic lesion in conjunctiva is lined by epithelial cells (Hematoxylin and Eosin, x100)

DISCUSSION

Conjunctival lesions comprise a large variety of conditions which may threaten visual function and life of the patients if not diagnosed early.^[2] In the epidemic review of all the eye cancers from the Singapore Cancer Registry, conjunctival cancer accounted for 12.8% of total 125 patients.^[3] Yoon and Grossiuklaus published a major series on conjunctival lesions in adults, and found that the common benign lesions were pterygium (18%), dysplasia (7%), inflammation (nonspecific nongranulomatous, 7%), and epithelial inclusion cyst (6%). The common malignant lesions in their study were SCC (4%), melanoma (3%), and sebaceous cell carcinoma (<1%).^[4] In our study, the common benign/nonmalignant lesions were pterygium (22.5%), pingueculum (9.16%), squamous papilloma (9.16%), and granulation tissue (8.33%). A total of 16 cases of malignancies (13.3%) were diagnosed in our study. Of these, SCC formed 7.5%, lymphoma (NHL) constituted 1.66%, and there were 2 cases of malignant melanoma (1.6%) and 1 case (0.83%) each of mucoepidermoid carcinoma, sebaceous carcinoma, and leukemic infiltration of acute myeloid leukemia (AML).

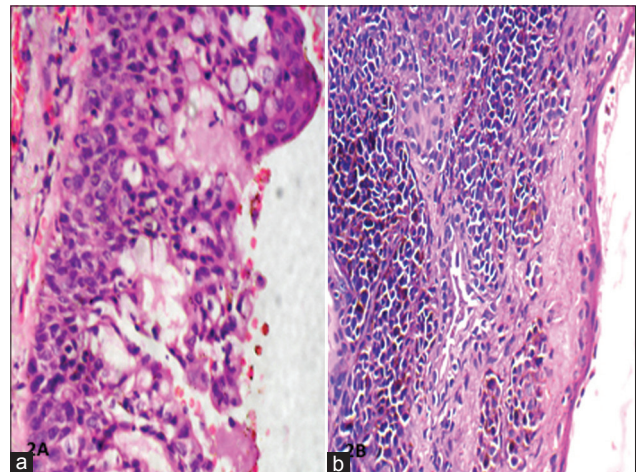


Figure 2: (a) Photomicrograph showing conjunctival intraepithelial neoplasia (CIN). The dysplastic cells involve the full thickness of the squamous layer, but the underlying stroma is uninvolved (Hematoxylin and Eosin, x100) (b) Photomicrograph showing subepithelial nevus in conjunctiva. There are groups of melanin producing nevus cells underneath the non-keratinized squamous epithelial layer (Hematoxylin and Eosin, x100)

Table 1: Distribution of conjunctival lesions according to histologic subgroup and anatomic locations (N = 120)

Histologic subgroup	Extralimbal	Limbal	Palpebrum	Fornix/caruncle	Diffuse
Degenerative (n = 38)	33	5	-	-	-
Benign epithelial (n = 23)	14	5	3	1	-
Premalignant and malignant epithelial (n = 27)	11	13	-	2	1
Melanocytic (n = 10)	7	3	-	-	-
Lymphoid (n = 7)	3	2	-	1	1
Miscellaneous (15)	4	1	9	1	-
Total (n = 120)	72	29	12	5	2

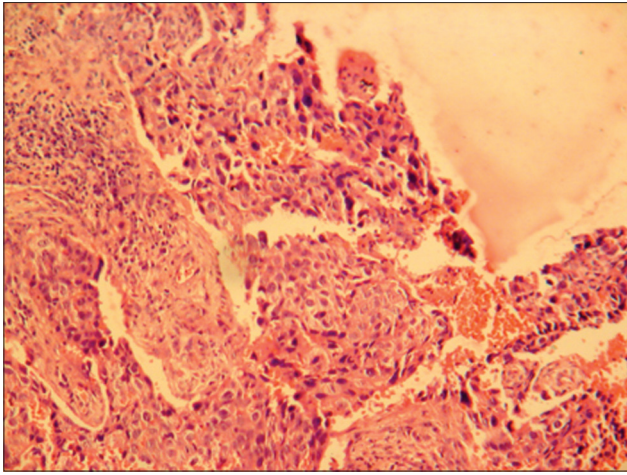


Figure 3: Photomicrograph showing squamous cell carcinoma; malignant squamous epithelial cells infiltrating the underlying stroma (Hematoxylin and Eosin, x100)

Table 2: Distribution of cases according to histologic diagnosis and percentage of conjunctival lesions (N = 120)

Histologic diagnosis	No. of cases	Total cases (%)
Degenerative	38	31.66
Pterygium	11	9.16
Pingueculum	27	22.5
Benign epithelial	23	19.16
Squamous papilloma	11	9.16
Pseudoepitheliomatous hyperplasia	07	5.83
Epithelial inclusion cyst	05	4.16
Premalignant and malignant epithelial	27	22.5
Actinic keratosis	03	2.5
Conjunctival intraepithelial neoplasia (CIN)	13	10.83
Squamous cell carcinoma	09	7.5
Mucoepidermoid carcinoma	01	0.83
Sebaceous carcinoma	01	0.83
Melanocytic	10	08.33
Nevus	05	4.16
Racial pigmentation	02	1.66
Primary acquired melanosis (PAM)	01	0.83
Malignant melanoma	02	1.66
Lymphoid	7	05.83
Reactive lymphoid hyperplasia	04	3.33
Lymphoma (NHL)	02	1.66
Leukemia	01	0.83
Miscellaneous	15	12.5
Granulation tissue/Pyogenic granuloma	10	8.33
Hemangioma	01	0.83
Lymphangioma	01	0.83
Rhinosporidiosis	02	1.66
Dermoid cyst (benign cystic teratoma)	01	0.83

In another study, the relative incidence of SCC and malignant melanoma was 50% and 31.25%, respectively.^[3] But in our study, incidence of SCC was much higher than that of melanoma (7.5% vs. 0.83%) when compared to other/

western studies.^[5,6] This might be due to the fact that light pigmentation which is seen in the Whites may be a risk factor for malignant melanoma. Two out of nine cases of SCC had HIV infection in our study, which is presumed to be a causative factor for SCC.^[4,7]

Premalignant and malignant epithelial lesions were seen commonly in older patients.^[8] Actinic keratosis was located in the interpalpebral area, usually over pre-existing pterygium. Conjunctival intraepithelial neoplasia (CIN)/dysplasia was commonly found in limbus with poorly defined edges. Sometimes it was found to extend over the corneal epithelium. In 2 out of 13 CIN cases, SCC developed later on.^[1,9] Three out of the five benign nevi were histologically proved to be compound nevi and two of them were subepithelial nevi. Majority of the patients were from pediatric and adolescent age group, which correlates with other studies.^[5,10,11] In one of the nevi, cyst was also found. In the two cases of racial pigmentation, uniform hyperpigmentation of the conjunctival basal layer was noted. Primary acquired melanosis (PAM) appeared as flat lesions in contrast to benign nevi which were scarcely pigmented, slightly elevated lesions. In both the cases of PAM, no atypia was found.^[12,13] The only case of malignant melanoma was present in fornix and was composed of both epithelioid and spindle cells (mixed type). Maly *et al.* proposed a histological scoring protocol in melanocytic conjunctival lesions (MCL). A scoring method of atypia was suggested according to histologic parameters: nest cohesion, melanocytic hyperplasia, nuclear features, and pagetoid spread. Lesions were scored according to the number of criteria as mild (1–2), moderate (3–4), and severe (5–8).^[14]

Both the lymphoma cases in our study were of low-degree non-Hodgkin's type and classified as marginal zone B cell lymphoma according to World Health Organization (WHO) or mucosa associated lymphoid tissue (MALT) lymphoma. One of them involved the conjunctiva bilaterally.^[15] Vascular neoplasm (hemangioma and lymphangioma, one case each) was diagnosed by indocyanine green angiography pre-biopsy which subsequently correlated with histologic examination.^[1,16]

To conclude, a large variety of conjunctival lesions may appear in the conjunctiva. Premalignant and malignant tumors such as carcinoma, lymphoma, or melanoma are aggressive, which jeopardize the vision and may endanger the patient's life. Therefore, early diagnosis is important and their existence must be confirmed by biopsy with histologic evaluation. Surgery combined with different supporting therapies (cryotherapy, chemotherapy, or others) is required to treat these lesions and for achieving local control of the disease. The core of a good approach for treating conjunctival tumors continues to hinge on a good histopathologic study

and diagnostic. So, clinicopathological correlation is crucial, requiring good communication between the clinician (ophthalmologist) and the pathologist.

REFERENCES

1. Rodrigues MM, Hidayat AA. Conjunctival and corneal pathology. In: Albert DM, Jakobiec FJ, editors. Principles and Practice of Ophthalmology. Vol. 4. Philadelphia: WB Saunders; 2000. p. 3609- 33.
2. Font RL, Croxatto O, Rao N. Tumors of the eye and ocular adnexa. Washington: American Registry of Pathology and Armed Forces Institute of Pathology; 2006. p. 1-40.
3. Lee SB, Au Eong KG, Saw SM, Chan TK, Lee HP. Eye cancer incidence in Singapore. *Br J Ophthalmol* 2000;84:767-70.
4. Yoon YD, Grossniklaus H. Tumors of the cornea and conjunctiva. *Curr Opin Ophthalmol* 1997;8:55-8.
5. Shields CL, Shields JA. Tumors of conjunctiva and cornea. *Surv Ophthalmol* 2004;49:3-24.
6. Spraul CW, Grossniklaus HE. Tumors of the cornea and conjunctiva. *Curr Opin Ophthalmol* 1996;7:28-34.
7. Saronil MA, Becerra E, Mendez MC, Blanco G. Conjunctival tumors. *Arch Soc Esp Oftalmol* 2009;84:7-22.
8. Tost F, Evert M. Conjunctival tumors in elderly patients. *Klin Monbl Augenheilkd* 2010;227:33-42.
9. Mauriello JA Jr, Napolitano J, McLean I. Actinic keratosis and dysplasia of conjunctiva: A clinicopathological study of 45 cases. *Can J Ophthalmol* 1995;30:312-6.
10. Shields CL, Shields JA. Conjunctival tumors in children. *Curr Opin Ophthalmol* 2007;18:351-60.
11. Bella LA, Aftane Evina T, Ombgwa Eballe A. Childhood ocular tumors: Epidemiological and histopathological aspects at the Yaounde gynaeco obstetric and pediatric hospital. *Sante* 2010;20:139-41.
12. Shields CL, Demirci H, Karatza E, Shields JA. Clinical survey of 1643 melanocytic and nonmelanocytic conjunctival tumors. *Ophthalmology* 2004;111:1747-54.
13. Alkatan HM, Al-Afraj KM, Maktabi A. Conjunctival nevi: Clinical and histopathologic features in a Saudi population. *Ann Saudi Med* 2010;30:306-12.
14. Maly A, Epstein D, Meir K, Pe'er J. Histologic criteria for grading of atypia in melanocytic conjunctival lesions. *Pathology* 2008;40:676- 81.
15. Mondal SK. Mucosa associated lymphoid tissue lymphoma of conjunctiva: A case report. *Indian J Pathol Microbiol* 2008;51:407-8.
16. Baumuller S, Kosanetzky N, Charbel IP, Holz FG, Loffler KU. Vascular lesion of the conjunctiva. *Ophthalmologe* 2009;106:832-5.

How to cite this article: Mondal SK, Nag DR, Bandyopadhyay R, Adhikari A, Mukhopadhyay S. Conjunctival biopsies and ophthalmic lesions: A histopathologic study in eastern India. *J Res Med Sci* 2012;17:1176-9.

Source of Support: Nil, **Conflict of Interest:** None declared.