

RESEARCH

Open Access

Differential G protein subunit expression by prostate cancer cells and their interaction with CXCR5

Christelle P El-Haibi¹, Praveen Sharma², Rajesh Singh³, Pranav Gupta³, Dennis D Taub⁴, Shailesh Singh³ and James W Lillard, Jr^{3*}

Abstract

Background: Prostate cancer (PCa) cell lines and tissues differentially express CXCR5, which positively correlate with PCa progression, and mediate PCa cell migration and invasion following interaction with CXCL13. However, the differential expression of G protein α , β , and γ subunits by PCa cell lines and the precise combination of these proteins with CXCR5 has not been elucidated.

Methods: We examined differences in G protein expression of normal prostate (RWPE-1) and PCa cell lines (LNCaP, C4-2B, and PC3) by western blot analysis. Further, we immunoprecipitated CXCR5 with different G protein subunits, and CXCR4, following CXCL13 stimulation. To investigate constitutive coupling of CXCR5 with CXCR4 and PAR-1 we performed invasion assay in PCa cells transfected with $G_{\alpha q/12}$ or $G_{\alpha 13}$ siRNA, following CXCL13 treatment. We also investigated Rac and RhoA activity by G-LISA activation assay in PCa cells following CXCL13/thrombin stimulation.

Result: Of the 22 G proteins studied, $G_{\alpha i1-3}$, $G_{\beta 1-4}$, $G_{\gamma 5}$, $G_{\gamma 7}$, and $G_{\gamma 10}$ were expressed by both normal and PCa cell lines. $G_{\alpha s}$ was moderately expressed in C4-2B and PC3 cell lines, $G_{\alpha q/11}$ was only present in RWPE-1 and LNCaP cell lines, while $G_{\alpha 12}$ and $G_{\alpha 13}$ were expressed in C4-2B and PC3 cell lines. $G_{\gamma 9}$ was expressed only in PCa cell lines. $G_{\alpha 16}$, $G_{\beta 5}$, $G_{\gamma 1-4}$, and $G_{\gamma 13}$ were not detected in any of the cell lines studied. Surprisingly, CXCR4 co-immunoprecipitated with CXCR5 in PCa cell lines irrespective of CXCL13 treatment. We also identified specific G protein isoforms coupled to CXCR5 in its resting and active states. $G_{\alpha q/11}/G_{\beta 3}/G_{\gamma 9}$ in LNCaP and $G_{\alpha i2}/G_{\beta 3}/G_{\gamma 9}$ in C4-2B and PC3 cell lines, were coupled to CXCR5 and disassociated following CXCL13 stimulation. Interestingly, $G_{\alpha 13}$ co-immunoprecipitated with CXCR5 in CXCL13-treated, but not in untreated PCa cell lines. Inhibition of $G_{\alpha q/12}$ significantly decreased the ability of cells to invade, whereas silencing $G_{\alpha 13}$ did not affect CXCL13-dependent cell invasion. Finally, CXCL13 treatment significantly increased Rac activity in $G_{\alpha q/12}$ dependent manner, but not RhoA activity, in PCa cell lines.

Conclusions: These findings offer insight into molecular mechanisms of PCa progression and can help to design some therapeutic strategies involving CXCR5 and/or CXCL13 blockade and specific G protein inhibition to abrogate PCa metastasis.

Keywords: Prostate cancer, Chemokine, G proteins, G protein-coupled receptor

* Correspondence: jlillard@msm.edu

³Department of Microbiology, Biochemistry, & Immunology, Morehouse School of Medicine, Atlanta, GA, USA

Full list of author information is available at the end of the article

Background

G protein-coupled receptors (GPCRs) are divided into three broad classes based on the similarity of the transmembrane sequences and the nature of their ligand [1]. Chemokine receptors are categorized under the superfamily of Class A Rhodopsin-like GPCRs [2]. GPCRs interact with heterotrimeric guanine nucleotide-binding proteins (G proteins) composed of α , β , and γ subunits present on the inner surface of the plasma membrane. After ligand binding, the receptor elicits a conformational alteration resulting in the exchange of guanosine diphosphate (GDP) for guanosine triphosphate (GTP) by the G_α subunit. This leads to heterotrimer dissociation and stimulation of downstream effector molecules to initiate intracellular signaling cascades [1,3,4]. G_α subunits are divided into four families $G_{\alpha s}$, $G_{\alpha i}$, $G_{\alpha q/11}$, and $G_{\alpha 12/13}$ based on sequence homology and functional similarities. $G_{\alpha s}$ proteins are known to stimulate adenylyl cyclases (AC), while $G_{\alpha i}$ proteins inhibit AC and activate phosphodiesterases. Alternatively, $G_{\alpha q/11}$ proteins regulate the activity of phosphatidylinositol-specific phospholipases to generate lipid second messengers, and $G_{\alpha 12/13}$ proteins regulate the small guanine triphosphate (GTPases). On the other hand, G protein β and γ subunits function as a tightly associated complex to modulate the activity of several effectors including AC, protein tyrosine kinases (e.g., Src family tyrosine kinases), phosphoinositide-3 kinase (PI3K) γ , GPCR kinases (GRKs), and Ca^{+2} as well as K^+ ion channels [4,5].

G_α subunits are encoded by 17 genes (*Gnas*, *Gnasxl*, *Gnal*, *Gnai1*, *Gnai2*, *Gnai3*, *Gnao*, *Gnaz*, *Gnag*, *Gnat1*, *Gnat2*, *Gnaq*, *Gna11*, *Gna14*, *Gna15*, *Gna12*, and *Gna13*). There are five known genes encoding G_β subunits (*Gnb1*, *Gnb2*, *Gnb3*, *Gnb4*, and *Gnb5*) and 12 genes encoding G_γ subunits (*Gngt1*, *Gngt2*, *Gng2*, *Gng3*, *Gng4*, *Gng5*, *Gng7*, *Gng8*, *Gng10*, *Gng11*, *Gng12*, and *Gng13*) [3,6,7]. A large number of potential combinations of $G_{\alpha/\beta/\gamma}$ heterotrimers can form; however, not all associations are functional and they vary in their affinity for distinct GPCRs [8,9]. G proteins also exhibit tissue-specific expression. Most G proteins are ubiquitously present in several tissues, but a smaller subset is confined to specialized cell types [7,10].

Several studies have reported the role of G proteins in different human diseases [11]. Comparatively, less is known regarding the expression of these signaling proteins by PCa cells. PCa cells express a repertoire of chemokine receptors that contribute to disease progression and metastasis [12,13]. In this regard, we have shown that PCa cell lines differentially express CXCR5, and this expression positively correlates with the ability of cell lines to migrate and invade extracellular matrix components following interaction with CXCL13 [14,15]. To our knowledge, neither the differential expression

of G protein α , β , and γ subunits by PCa cell lines nor specific G protein interactions with CXCR5 have been described. Here, we elucidate the differences in G protein isoforms expressed by normal and tumorigenic prostate cell lines. We also identified the specific G protein isoforms coupled to CXCR5 in the presence or absence of CXCL13 stimulation.

Results

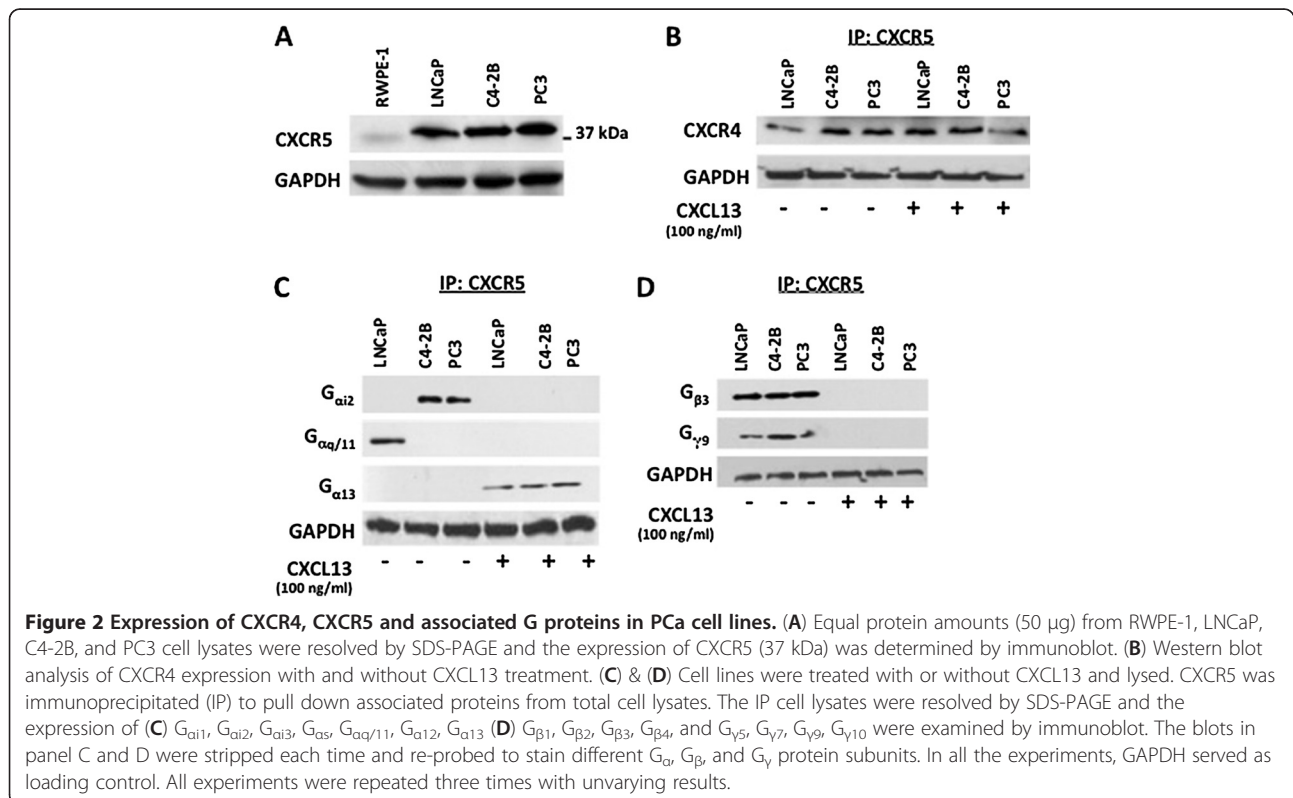
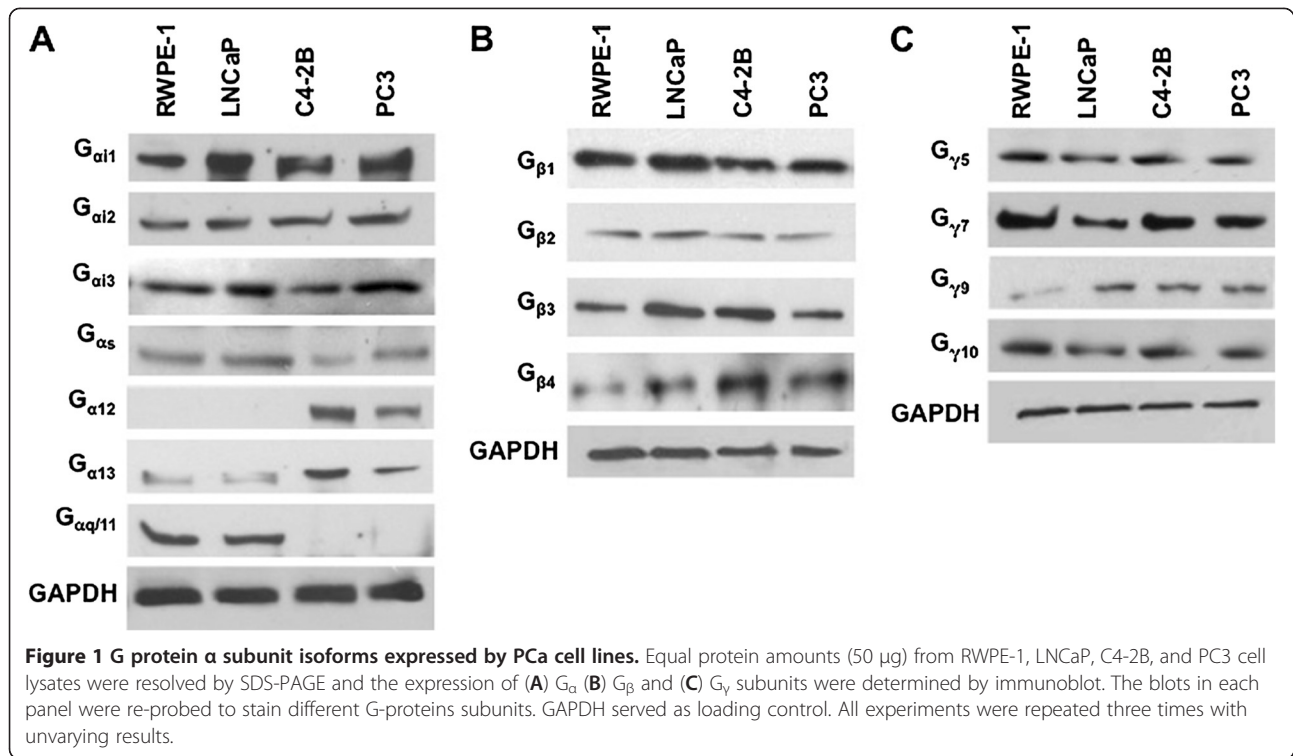
Endogenous expression of G_α protein subunits by PCa cells
In light of the diversity of G protein isoforms and functions, we revealed the differential expression of G protein α , β , and γ isoforms by Western blot analysis of total lysates of untreated PCa and normal cell lines. Our results show that $G_{\alpha i}$ subunit (isoforms 1, 2, and 3) are widely expressed by RWPE-1, LNCaP, C4-2B, and PC3 cell lines (Figure 1A). The $G_{\alpha s}$ subunit was expressed by all cell lines studied, with reduced levels in C4-2B and PC3 cell lines. $G_{\alpha 12}$ was expressed by hormone refractory cell lines C4-2B and PC3, but was absent in RWPE-1 and LNCaP cell lines. $G_{\alpha 13}$ was unequally distributed among the four cell lines examined, showing elevated levels in C4-2B and PC3 cell lines (Figure 1A). The $G_{\alpha q/11}$ subunit was confined to the androgen-dependent cell lines - RWPE-1 and LNCaP and not detected in hormone refractory cell lines, C4-2B and PC3 (Figure 1A). Lastly, $G_{\alpha 16}$ was not detected in any of the tested cell lines (data not shown), probably due to its specificity for hematopoietic cells [16].

Endogenous expression of $G_{\beta\gamma}$ -protein subunits by prostate cells

Except for the $G_{\beta 5}$ isoform (data not shown), which reported to be largely expressed by brain tissue [5,9], all other G_β isoforms were present in all prostate cell lines examined (Figure 1B). The expression of G_γ subunits exhibited a distinctive pattern where only isoforms [5,7,9,10] were detected in the cell lines studied. As expected, $G_{\gamma 1-4}$ and $G_{\gamma 13}$ were not detected in any of the cell lines tested (data not shown) (Figure 1C), because they have previously shown to be confined to retinal rods, brain tissue, and taste buds respectively [3]. Interestingly, $G_{\gamma 9}$ was expressed at very low levels in the normal prostate cell line, but was significantly expressed in all of the PCa cell lines tested.

Specific G proteins coupled to CXCR5 in PCa cell lines

It is now well established that chemokine receptors are often up-regulated and potentially influence the tumor behavior in a variety of human cancers including prostate cancer. Here, we demonstrate that CXCR5 is highly expressed by PCa cell lines (LNCaP, C4-2B, and PC3), but in low to undetectable amount by the normal prostate cell line, RWPE-1 (Figure 2A). Chemokine receptors are usually, but not exclusively, coupled to $G_{\alpha i}$ subclass



of G proteins [17]. In this study, we demonstrate that only $G_{\alpha i2}$ co-immunoprecipitated with CXCR5 in untreated C4-2B and PC3 cell lines in the absence of agonist, while $G_{\alpha q/11}$ associates with CXCR5 in untreated LNCaP cells. $G_{\alpha i3}$ co-immunoprecipitated with CXCR5 in all three PCa cell lines treated with CXCL13, but was not detected in untreated cells (Figure 2C). $G_{\beta 3}$ and $G_{\gamma 9}$ co-immunoprecipitated with CXCR5 in the absence of CXCL13 in all PCa cell lines used (Figure 2D). This $G_{\beta 3/\gamma 9}$ complex was not detected following CXCL13 stimulation indicating its ligand-induced dissociation from the receptor. The other G_{α} ($i1, i3$), G_s , $G_{\alpha 12}$, G_{β} (1, 2, 4) and G_{γ} (5, 7, 10) subunits which were detected in PCa cell lines (Figure 1B and 1C) were not co-immunoprecipitated with CXCR5 in presence or absence of agonist (data not shown).

Validation and significance of $G_{\alpha q/11}/G_{\beta 3}/G_{\gamma 9}$ and $G_{\alpha i2}/G_{\beta 3}/G_{\gamma 9}$ binding to CXCR5 in LNCaP, and C4-2B, and PC3 cell lines respectively

To further validate differences observed in G_{α} subunit(s) coupling and uncoupling to CXCR5 in CXCL13-treated versus untreated cells, we separately immunoprecipitated $G_{\alpha q/11}$ and $G_{\alpha i2}$ subunits in untreated and CXCL13-treated PCa cells and immunoblotted for CXCR5. Our results provide the first evidence of multifunctional coupling of CXCR5 to different types of G proteins favoring a pertussis

toxin-insensitive signaling pathway mediated by $G_{\alpha q/11}$ in LNCaP cells and a pertussis toxin-sensitive signaling pathway mediated by $G_{\alpha i2}$ in C4-2B and PC3 cells (Figure 3).

Association of $G_{\alpha i3}$ protein, CXCR4, and PAR-1 with CXCR5 in CXCL13-treated PCa cell lines

One surprising result was the association of the $G_{\alpha i3}$ subunit with CXCR5 in PCa cell lines treated with CXCL13, but not in untreated cells. Thus, it was critical to confirm this finding by immunoprecipitating $G_{\alpha i3}$ protein from CXCL13-treated and untreated PCa cells, and immunoblotting for CXCR5. Results confirm that coupling of $G_{\alpha i3}$ to CXCR5 is specific to CXCL13-treated cells (Figure 3C). It has been reported that proteinase activated receptor-1 (PAR-1) is capable of bypassing signaling through $G_{\alpha i}$ -pathway to support $G_{\alpha 12/13}$ -dependent mechanisms, enhancing cellular proliferation, invasion, and metastasis [18]. We therefore examined the association of PAR-1 with $G_{\alpha i3}$ and showed that CXCR5 and PAR-1 are linked to $G_{\alpha i3}$ following treatment with CXCL13 (Figure 4A).

The presence of CXCR4 in CXCR5 immunoprecipitants (with or without CXCL13 treatment) offers the first evidence of CXCR5 association with CXCR4 (Figure 2B). These interactions could potentially support CXCR4-CXCR5 signaling crosstalk. Moreover, the ability of

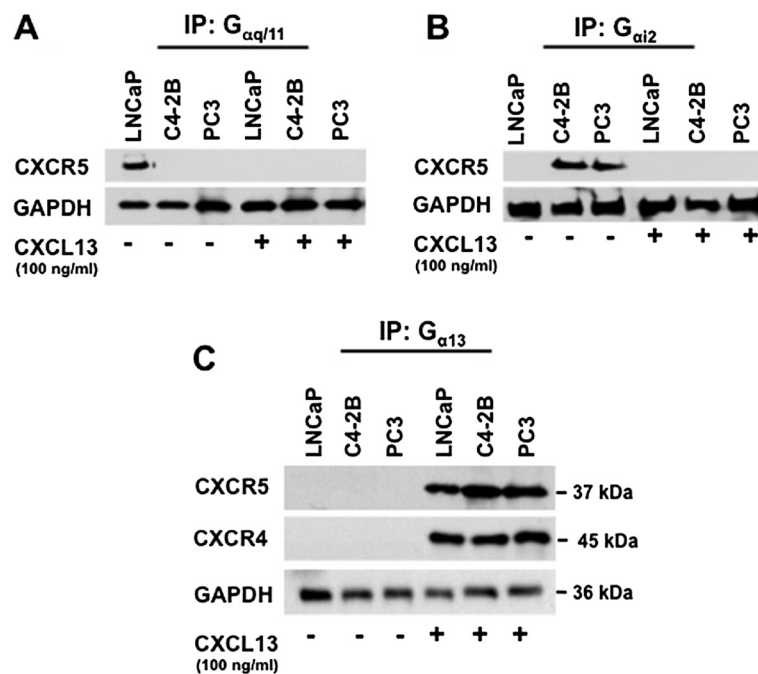


Figure 3 Validation of $G_{\alpha q/11}$, $G_{\alpha i2}$, and $G_{\alpha i3}$ protein association with CXCR5. Cell lines were treated with or without CXCL13 and lysed. (A) $G_{\alpha q/11}$ and (B) $G_{\alpha i2}$ were immunoprecipitated (IP) from total cell lysates. The IP cell lysates were resolved by SDS-PAGE and CXCR5 expression was examined by immunoblot. (C) Identification of CXCR4 and CXCR5 coupled to $G_{\alpha i3}$ following CXCL13 stimulation. Cell lines were treated with or without CXCL13 and lysed. Antibody against $G_{\alpha i3}$ was used to immunoprecipitate (IP) it from total cell lysates. The IP cell lysates were resolved by SDS PAGE and immunoblotted for CXCR5 followed by CXCR4, after stripping. In all the experiments, GAPDH served as loading control. All experiments were repeated three times with unvarying results.

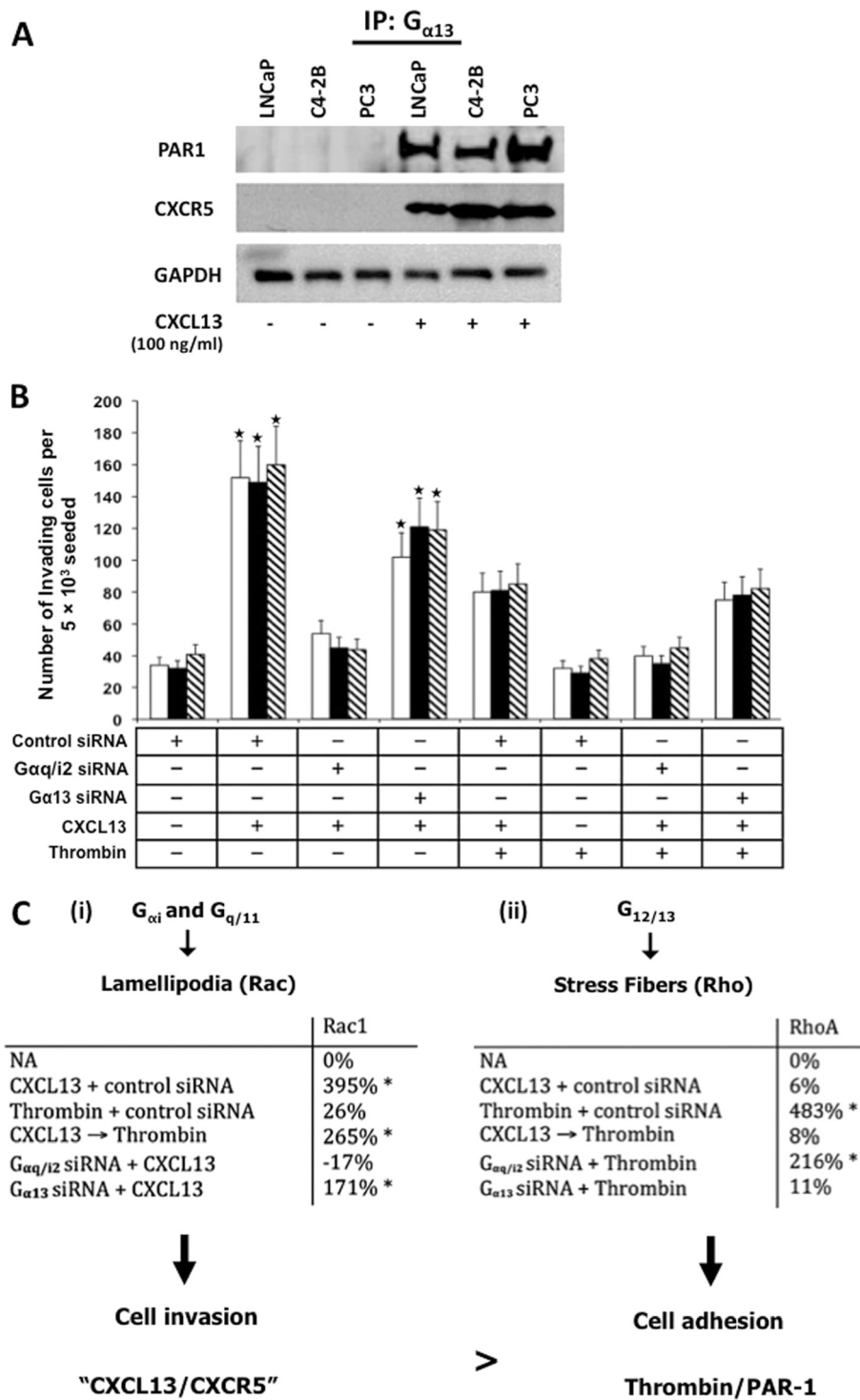


Figure 4 (See legend on next page.)

(See figure on previous page.)

Figure 4 $G_{\alpha 13}$ association with PAR-1 and CXCR5, and $G_{\alpha 13}$ and $G_{\alpha i 2}$ contribution to PCa cell lines invasion and Rac/Rho activation.

(A) Cell lines were treated with or without CXCL13 and lysed. Antibody against $G_{\alpha 13}$ was used to immunoprecipitate (IP) it from total cell lysates. The IP cell lysates were resolved by SDS PAGE and immunoblotted for PAR-1 followed by CXCR5, after stripping. GAPDH served as a loading control. (B) Invasion of LNCaP, C4-2B and PC3 cells was assessed using BD Matrigel™ invasion chamber. The assay was performed using LNCaP (open bars), C4-2B (solid bars) and PC3 (hashed bars) cells transfected and/or treated with control siRNA, $G_{\alpha q/i 2}$ siRNA, or $G_{\alpha 13}$ siRNA duplex, and CXCL13 and/or Thrombin for 8 h and the cells that migrated to the lower surface of the membrane were counted by microscopy at 40X magnification. CXCL13-treated cells exhibited an enhanced ability to invade Matrigel. Abrogation of $G_{\alpha q/i 2}$ decreased the ability of cells to invade whereas silencing of $G_{\alpha 13}$ did not affect cell invasion. (C) Rac and RhoA protein expression were determined in CXCL13 and/or thrombin treated LNCaP, C4-2B, and PC3 cells. (i) shows differential expression of Rac protein, involved in lamellipodia formation, in response to CXCL13, thrombin, CXCL13 followed by thrombin and from cells transfected with $G_{\alpha q/i 2/13}$ siRNA in different experiments. (ii) shows differential expression of RhoA protein, involved in stress fiber formation and cell adhesion, in response to CXCL13, thrombin, CXCL13 followed by thrombin and from cells transfected with $G_{\alpha 13}$ siRNA in different experiments. All experiments were repeated at least three times and results were in accordance with each other.

CXCR4 to engage in $G_{\alpha 13}$ -mediated cell signaling events that activate Rho pathways leading to cell adhesion has been previously demonstrated [19]. $G_{\alpha 13}$ association with CXCR5, CXCR4 and PAR-1 after CXCL13 treatment (Figures 3C & 4A) alludes to chemokine receptor oligomer formation or the recruitment of other GPCR- $G_{\alpha 13}$ associated signaling complexes after stimulation, which could presumably potentiate synergistic or additional biological events, respectively [20,21].

It is plausible that the CXCL13:CXCR5 axis regulates cell migration by desensitizing CXCR4 and conditional coupling of CXCR5 with PAR-1. Therefore, constitutive coupling of CXCR5 with CXCR4 and PAR-1 after CXCL13 ligation in PCa cells could be another mechanism through which CXCL13 sequesters factors hampering cell migration. To investigate whether this hypothesis holds true, we allowed LNCaP, C4-2B, and PC3 cells previously transfected with $G_{\alpha q/i 2}$ or $G_{\alpha 13}$ siRNA duplexes to invade across a Matrigel membrane following treatment with CXCL13 or thrombin, which are activating ligands of CXCR5 and PAR-1, respectively. Control siRNA duplex-treated PCa cells exhibited increased invasive potential to CXCL13 (Figure 4B). While abrogation of $G_{\alpha q/i 2}$ significantly decreased the ability of cells to invade, silencing $G_{\alpha 13}$ did not affect CXCL13-dependent cell invasion. In contrast, PCa cell lines did not invade in response to thrombin alone, but were moderately invasive in the presence of CXCL13 and thrombin. This invasive potential was also $G_{\alpha q/i 2}$ -dependent, but $G_{\alpha 13}$ -independent. Taken together, these observations suggest CXCL13 is signaling independently of the PAR-1/ $G_{\alpha 13}$ complex and mainly through CXCR5/ $G_{\alpha q/i 2}$ to promote PCa cell invasion.

CXCL13, Thrombin, $G_{\alpha q/i 2}$ protein, and $G_{\alpha 13}$ protein mediated Rac and RhoA activation in PCa cell lines

G proteins have been shown to differentially activate three members of the Rho family of GTPases (Rac, Cdc42, and RhoA). Our data show that $G_{\alpha q/11/\beta 3/\gamma 9}$ and $G_{\alpha i 2/\beta 3/\gamma 9}$ proteins dissociated from CXCR5 after

CXCL13 stimulation. This uncoupling is thought to be the result of G protein subunit activation, which stimulates downstream effector molecules, including RhoA and Rac. We therefore performed Rac and RhoA activity assays on CXCL13 and thrombin-treated PCa cells. CXCL13 treatment resulted in a 395% increase in Rac activity, but no change in RhoA activity (Figure 4C). Correspondingly, thrombin-treated PCa cells displayed no significant increase in Rac activity. CXCL13-mediated Rac activation was $G_{\alpha q/i 2}$ -dependent, while thrombin-induced RhoA activation was $G_{\alpha 13}$ -dependent and $G_{\alpha q/i 2}$ -independent. Interestingly, treatment of cells with CXCL13, 5 min before thrombin stimulation did not significantly effect Rac activation, but abrogated thrombin-dependent RhoA activation. Together, our results show CXCL13 stimulation biases PCa cells to invade or migrate, instead of adhere, even in the presence of a potent adherence signal, i.e., thrombin-PAR-1 interactions.

Discussion

GPCR mediated heterotrimeric G protein signaling is known to regulate cellular motility, growth and differentiation, and gene transcription, three factors central to the biology of cancer. Depending on the physiologic function, expression of G protein(s) subunit isoforms may vary from one cell type to other. $G_{\alpha i}$ subunit inhibits the production of cAMP from ATP. In our study, we found constitutive expression of $G_{\alpha i}$ subunit isoforms in all the cell lines tested. This is in tune with the earlier reports stating that $G_{\alpha i}$ subunit isoforms are the most ubiquitously expressed G protein α isoforms [7,10]. Moreover, studies of tissue samples obtained from patients with T2 stage PCa revealed low levels of $G_{\alpha s}$ subunit compared to high levels in normal controls [22]. $G_{\alpha 12}$ and $G_{\alpha 13}$ levels were significantly elevated by PC3 and DU-145 cell lines, than compared to PrEC and LNCaP cell lines [23,24]. We found similar results, where $G_{\alpha 12}$ was detected only in hormone refractory C4-2B and PC3 cell lines, whereas $G_{\alpha 13}$ was significantly elevated in these cell lines. $G_{\beta 1-4}$ and $G_{\gamma 5,7,9,10}$ were

expressed in all the cell lines tested. If all of these $G_{\beta 1-4}$ and $G_{\gamma 5,7,9,10}$ proteins could combine to form a dimer, there would be 16 potential arrangements in PCa cells. Emerging evidences suggest that most pairs can indeed form, with some noted exceptions in specific expression systems [4,9,25]. For instance, $G_{\beta 1}$ can combine with $G_{\gamma 2}$ and $G_{\gamma 5}$ but not $G_{\gamma 3}$; and $G_{\beta 2}$ can form a pair with $G_{\gamma 5}$ but not with $G_{\gamma 1}$ [26]. Also, $G_{\beta 3}$ pairing with $G_{\gamma 1}$ and $G_{\gamma 2}$ is structurally impossible [9]. $G_{\gamma 13}$ can form stable dimers with $G_{\beta 1}$, $G_{\beta 3}$, and $G_{\beta 4}$, while $G_{\gamma 10}$ is capable of interacting with $G_{\beta 1}$, $G_{\beta 2}$, but not $G_{\beta 3}$ [9,27,28]. Future X-ray crystallography studies will be necessary to unravel the precise structural and functional relationship(s) among G protein subunit isoforms.

Malignant cells, which express a wide repertoire of chemokine receptors, respond to chemokines with increased directional migration, proliferation, and/or survival [29]. We have recently demonstrated CXCR5 expression in tissues obtained from PCa patients, and showed that elevated levels of CXCR5 correlate with advanced disease [15]. Furthermore, we established a role for CXCL13 and CXCR5 interaction in prostate tumor progression and elucidated some of the molecular and cellular processes mediated by activation of this chemokine receptor [14]. In confirmation we investigated the expression of CXCR5 and its association with G protein subunits in both androgen sensitive and hormone refractory PCa cells. However, five minutes after CXCL13 stimulation, the G protein subunits ($G_{\alpha i 2}$ and $G_{\alpha q/11}$) that bind to CXCR5 were not detected in cell lysates. The plausible explanation for this finding is that binding of CXCL13 to CXCR5 causes conformational changes that elicit the classical dissociation of these G proteins, allowing them to stimulate downstream signaling cascades. Indeed, static and dynamic light scattering measurements of protein complexes will be used to quantify the strength of these interactions, including potential homo- and hetero-associations. In addition to the stoichiometry of these protein-protein associations, future studies will also include isothermal titration calorimetry characterization of these interactions to provide information on the enthalpy, entropy and binding kinetics between these proteins.

Oncogenic mutations of $G_{\alpha i 2}$ protein have been identified in ovarian and adrenocortical tumors suggesting a potential role in cellular transformation [30]. $G_{\alpha i 2}$ has also been reported to promote B lymphocyte trafficking and motility within lymph nodes in response to CXCL13 [31]. The characteristic $G_{\alpha i 2}$ coupling to CXCR5, a chemokine receptor aberrantly expressed by C4-2B and PC3 cell lines, offers a new perspective on the role of G proteins in CXCL13:CXCR5-mediated PCa cell migration.

While the LNCaP cell line is androgen-responsive, C4-2B and PC3 cell lines have hormone-refractory properties

[20,32]. This might explain the differential expression of G proteins we observed in LNCaP and C4-2B cell lines, even though the C4-2B cell line was derived from LNCaP cells. Androgen is known to regulate the cellular composition of the normal prostate and acts on a set of specific genes, which impact the protein repertoire of a cell [33]. This dissimilarity in PCa cell line sensitivity to androgen might account for the variation in G protein expression, and could ultimately mandate CXCR5-mediated G protein coupling in these cell types. Our results also suggest that androgen receptor (AR) activation and/or inhibition may contribute to G protein expression in PCa tumors. However, defining the contributions of AR in CXCR5 signaling will be the subject of a different study.

It has been demonstrated that G protein α subunits undergo post-translational lipidation, which increase their affinities for G protein β and γ subunits. These covalent modifications largely determine which G protein α isoforms associate with specific G protein $\beta\gamma$ -complexes [34]. Inhibition of the $G_{\beta\gamma}$ subunits in general prevents PCa formation and growth *in vivo* [35]. It is worth noting that a polymorphism in the gene encoding $G_{\beta 3}$ subunit is associated with oncogenesis and risk of bone metastasis in patients with breast cancer, while the homozygous $G_{\beta 3}$ genotype conferred protection against disease progression [36]. Hence, the identification of $G_{\beta 3/\gamma 9}$ coupling to CXCR5 is of considerable interest and the functional relevance of this finding is a matter for future studies. It has also been noted that free $G_{\beta\gamma}$ complexes can effect other second messengers, e.g., phospholipase A2 and phospholipase C, or gating ion channels, e.g., G protein coupled inward rectifying potassium channels and L-type calcium channels. While this has not been observed following CXCR5 signaling, future studies will be needed to determine the potential signaling events induced by the $G_{\beta 3-\gamma 9}$ complex following CXCR5 stimulation.

We also found that $G_{\alpha 13}$ protein associates with CXCR5 following CXCL13 stimulation. While multiple scenarios could exist to explain this result, $G_{\alpha 13}$ association with active CXCR5 could be the product of ligand-mediated G protein switching. It has been reported that G protein isoforms switch their coupling to receptors in response to ligand binding in a cAMP-dependent protein kinase (PKA) fashion to presumably initiate a new set of signaling cascades [37]. This phenomenon has been described in CHO cells, where the β_2 -adrenergic receptor switches its coupling specificity from $G_{\alpha s}$ to $G_{\alpha i}$ in response to agonist binding [38].

Previously it has been shown that CXCR4 is widely expressed by PCa cell lines and migration and invasive potential of these cells were significantly impaired by anti-CXCR4 antibodies [39]. In our study, we found a

constitutive coupling of CXCR4 to CXCR5 and a likely oligomerization with other GPCRs upon CXCR5 activation (Figure 5). This interaction can sequester $G_{\alpha 13}$ and/or associated receptors to apparently diminish their functions, e.g. adhesion. While co-immunoprecipitation is considered the gold standard for determining protein-protein interactions of endogenous untagged proteins, futures studies will be needed to ascertain the affinity and confirmation of these interactions. Indeed, it will be important for potential molecular drug development efforts to determine the binding constants and the precise regions where CXCR5 (or CXCR4) and $G_{\alpha q/11}$, $G_{\alpha i2}$, $G_{\alpha 13}$, $G_{\beta 3}$ and $G_{\gamma 9}$ proteins interact.

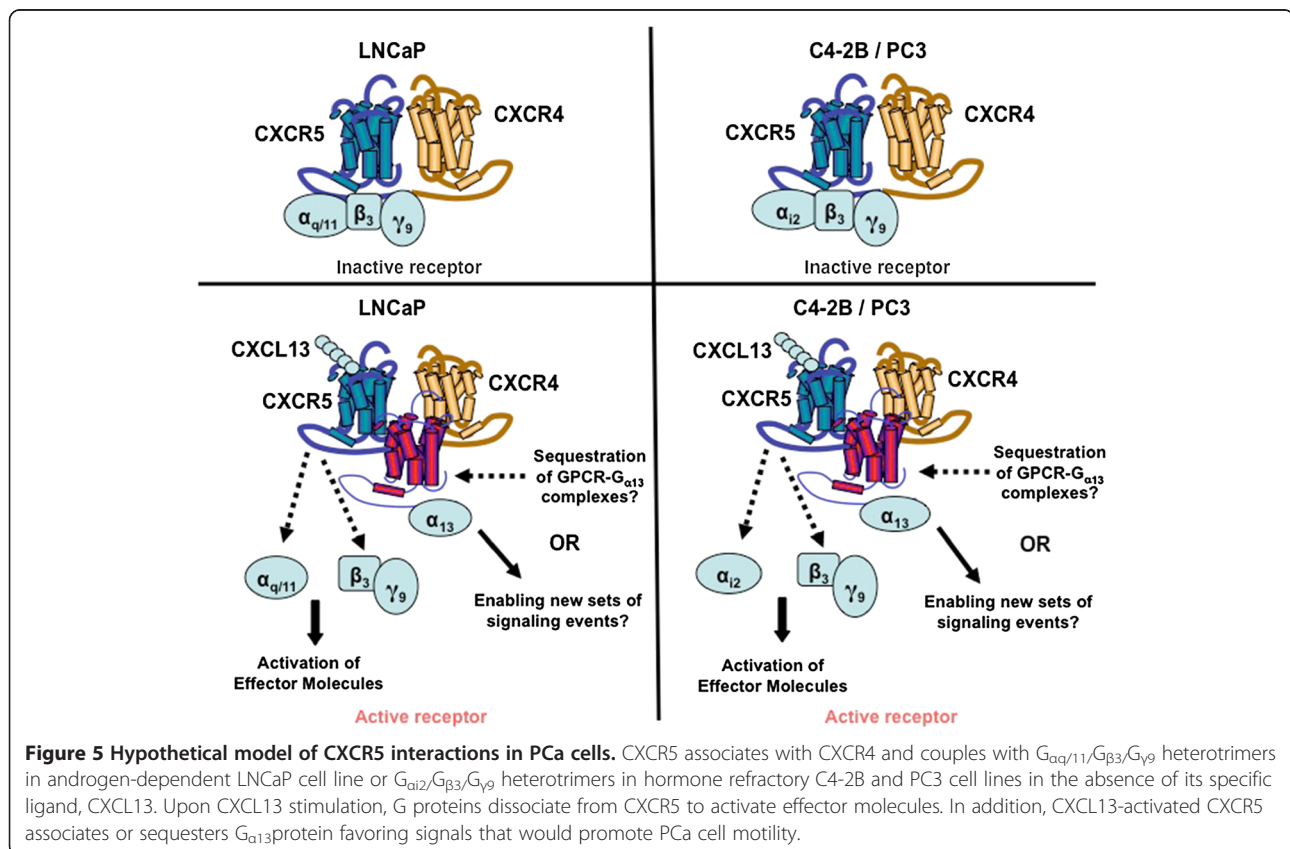
The ability of GPCRs to differentially couple to multiple classes of G proteins ($G_{\alpha i}$, $G_{\alpha q/11}$, $G_{\alpha 12/13}$) has also been described for sphingosine-1-phosphate receptors, and the liver pancreastatin receptor [40,41]. While the possibility of CXCR5 switching from $G_{\alpha i}$ to $G_{\alpha 13}$ signaling pathways requires further investigation, the possibility of its occurrence presents a means for tumor cells to acquire new signaling machinery that could promote disease progression. Hence, it is more likely that CXCR5 binds $G_{\alpha 13}$ protein as a mechanism to sequester and prevent it from signaling, which would favor Rac >> RhoA activation and cell migration. To explain, $G_{\alpha 12/13}$ family of G proteins have

been shown to stimulate RhoA activation and subsequent actin cytoskeletal rearrangements characterized by the formation of stress fibers for focal adhesion [42].

RhoA activation causes the formation of stress fibers and focal adhesions. Rac activation leads to lamellipodia formation and membrane ruffling, while cdc42 activation results in filopodia formation. These cellular processes are particularly important for cell migration and adhesion [43]. Compelling evidence suggest that Rac are primarily activated by $G_{\alpha i}$ and $G_{\alpha q}$ subunits [44]. RhoA has shown to be activated downstream of $G_{\alpha 12/13}$ subunits and to a lesser extent by $G_{\alpha q}$, while $G_{\beta \gamma}$ complexes are thought to contribute to activation of both RhoA and Rac pathways through direct stimulation of PI3K [45].

Conclusions

We show differential G protein expression by PCa cell lines and establish specific heterotrimeric coupling to CXCR5 in an androgen-sensitive (LNCaP) and hormone refractory (C4-2B and PC3) manner. We also provide evidence for $G_{\alpha 13}$ protein association with CXCR5 following CXCL13 stimulation, which could inhibit or potentiate various cellular processes. Moreover, we identify for the first time the constitutive coupling of CXCR4 to



CXCR5. Clearly, there is much to learn about how specific heterotrimeric G protein compositions are regulated, and how these associations dictate unique signaling pathways. It will also be important to determine the clinical relevance of the $G_{\alpha q/11}/G_{\beta 3}/G_{\gamma 9}$ heterotrimer in early and $G_{\alpha i 2}/G_{\beta 3}/G_{\gamma 9}$ in advanced or hormone refractory PCa.

Several observations have described chemokine receptor oligomer formation resulting in unusual G protein signaling [46]. The hetero-dimerization between CCR2 and CCR5 has been extensively explored and suggests a mechanism of differential receptor coupling to pertussis toxin-sensitive to -insensitive G proteins [47,48]. Evidence also supports the ability of CCR5 to interact with non-chemokine receptors including opioid receptors [49]. While CXCR4 is present in almost all invasive cancers, CXCR5 has been implicated in advanced stages of chronic myelogenous leukemia, head and neck cancers, colon, and prostate cancer [1,12,29,50]. There is growing evidence to suggest transactivation of chemokine receptors will result in signal amplification at the receptor level, providing a means for tumor cells to metastasize and grow [21,46].

The signaling cascade following CXCL13-CXCR5 interactions is indeed complex. These signals support Rac activation and invasion in a $G_{\alpha q/i 2}$ protein dependent fashion. Further, CXCR5 associates with CXCR4 and following activation can sequester $G_{\alpha 13}$ and/or associated receptors to seemingly diminish their functions.

No doubt, CXCR5 and/or CXCL13 blockade and specific G protein inhibition might prove to be effective therapeutic strategies to disrupt CXCR5 (and possibly CXCR4) signaling to abrogate PCa cell metastasis.

Methods

Cell lines and culture

Human prostate cancer cell lines (LNCaP, C4-2B, and PC3) and the epithelial cell line RWPE-1 derived from normal prostate were used in this study. All the cell lines were obtained from ATCC. To authenticate the cell lines, we carried out short tandem repeats genotyping. RWPE-1 cell line (ATCC # CRL-11609) is an established normal prostate epithelial cell line that was cultured in keratinocyte serum free media (K-SFM) supplemented with bovine pituitary extract (0.05 mg/ml) and epidermal growth factor (5 ng/ml) at 37°C in a humidified atmosphere with 5% CO₂. LNCaP cell line (ATCC # CRL-1740) is derived from the left supraclavicular lymph node of a metastatic prostate adenocarcinoma patient and is responsive to 5-alpha-dihydrotestosterone. C4-2B cell line is derived from the LNCaP cell line; however, it is hormone refractory. The PC3 cell line (ATCC # CRL-1435) was derived from a bone metastasis of a grade IV prostatic adenocarcinoma patient. All three PCa cell lines

were cultured in complete RPMI 1640 media supplemented with 10% fetal bovine serum (FBS) and maintained in a cell culture incubator at 37°C in a humidified atmosphere with 5% CO₂. Cell lines were serum starved overnight prior to treatment with 100 ng/ml of CXCL13 (Pepro Tech, NJ, USA) or 1U/ml of thrombin (Sigma, MO, USA).

Immunoprecipitation

RWPE-1, LNCaP, C4-2B and PC3 cells were lysed in a cell lysis buffer containing 1% NP40, 1% Triton X-100, 0.25% deoxycholate, 100 mM NaCl, 50 mM Tris-HCl, pH7.4, and protease and phosphatase inhibitors (Roche, IN, USA). The protein concentrations of whole cell lysates were determined by bicinchoninic acid (BCA) protein determination assay (Pierce, IL, USA). To determine selective G protein isoforms coupled to CXCR5, equal amounts (100 µg) of LNCaP, C4-2B, and PC3 cell lysates were incubated with 1 µg of mouse anti-CXCR5 (R&D systems, MN, USA), mouse anti- $G_{\alpha i 2}$, rabbit anti- $G_{\alpha q/11}$, or goat anti- $G_{\alpha 13}$ antibodies (Santa Cruz, CA, USA) for 2 h at 4°C. Immune complexes were collected by adding 20 µl of Agarose A/G PLUS beads (Santa Cruz, CA, USA) overnight at 4°C. Following incubation protein complexes were washed twice with lysis buffer by centrifugation at 10,000 × g for 10 min at 4°C and released from the beads by boiling in sample buffer for 5 min. The resultant immunoprecipitates were further analyzed by immunoblot analysis.

Immunoblotting and antibodies

Western blot analysis was conducted on immunoprecipitants generated as described above or directly on cell lysates containing 50 µg of protein. Samples were denatured by boiling in Laemmli buffer for 5 min, resolved by electrophoresis on 4-15% gradient SDS-polyacrylamide gel as needed, and transferred to nitrocellulose membranes using a semi-dry transfer cell system (Bio-Rad, CA, USA). Membranes were blocked for 1 h at room temperature (RT) in 5% non-fat milk in 1X TTBS (30 mM Tris-Base, 150 mM NaCl, and 0.1% Tween 20), followed by washing with 1X TTBS. Primary antibodies against G proteins α_{11} , α_{12} , α_{13} , α_s , $\alpha_{q/11}$, α_{12} , α_{13} , α_{16} , β_1 , β_2 , β_3 , β_4 , β_5 , γ_1 , γ_2 , γ_3 , γ_4 , γ_5 , γ_7 , γ_9 , γ_{10} , γ_{13} , CXCR5 (Santa Cruz, CA, USA), and CXCR4 (R&D systems, MN, USA) were added to the membranes and incubated overnight at 4°C in 5% non-fat milk. Membranes were then washed and corresponding horseradish peroxidase (HRP)-conjugated secondary antibodies (Santa Cruz, CA, USA) were added for 1 h followed by additional washes. Immunoreactive proteins were visualized by a chemiluminescent detection reagent (Amersham, PA, USA) on autoradiographic films. The blots were re-probed each time to stain different G protein subunit isoforms. Following development for G proteins,

all membranes were stripped and re-probed with antibody against GAPDH (Ambion, NY, USA) to ensure equal loading.

Invasion assay

PCa cell invasion was assessed using BD Matrigel™ invasion chamber (BD Biosciences). Briefly, Matrigel inserts were hydrated for 2 h with 500 µl of DMEM at 37°C with 5% CO₂. CXCL13 (100 ng/ml) or thrombin (1 U/ml) was added to the bottom chamber containing serum-free RPMI medium. LNCaP, C4-2B, and PC3 cells were transfected with 1 µg control siRNA, G_{αq/i2} siRNA, or G_{α13} siRNA duplex (Santa Cruz, CA, USA) prior to harvest, and added to the top chambers in serum-free RPMI medium at 10,000 cells per well. The cells were allowed to invade for 8 h at 37°C with 5% CO₂. Non-invading cells on the upper surface of the membrane were removed with a cotton swab. The cells that migrated to the lower surface of the membrane were fixed with methanol at RT for 5 min, stained with crystal violet for 2 min, and washed with distilled water. The membranes were peeled and mounted on glass slides. Cells were then counted by microscopy at 40X magnification. Experiments were performed in triplicate and repeated three times.

Rac and RhoA G-LISA activation assays

Rac and RhoA activity were determined from cell lysates collected from LNCaP, C4-2B, and PC3 cells treated with or without CXCL13, thrombin, control siRNA, G_{αq/i2} siRNA and/or G_{α13} siRNA. PCa cells were transfected with 1 µg of control, G_{αq/i2} siRNA, or G_{α13} siRNA duplexes (Santa Cruz, CA, USA) as before. Optimal knock-down of RNA and resulting protein knockdown occurred 72 h after transfection, which was confirmed by RT-PCR and Western blot analysis. Transfected PC3 cell cultures were pre-treated with media alone, 100 ng/ml of CXCL13 or 1 U/ml of thrombin for 30 min. Subsequently, cultures were treated with these CXCR5 or PAR-1 ligands to determine Rac and RhoA activities. After 10 min. of stimulation, protein lysates were isolated and assayed using the colorimetric-based G-LISA™ Rac activity and luminescence-based G-LISA™ RhoA activation assay kits (Cytoskeleton, CO, USA), according to the manufacturer's instructions. Briefly, proteins were isolated using the provided cell lysis buffer and lysates were collected by centrifugation at 10,000 rpm at 4°C for 2 min. Protein concentrations from each sample were quantified and then adjusted to contain protein concentrations of 2 mg/ml for the assay. Absorbance and luminescence were detected as suggested by the manufacturer. Changes in Rac and RhoA activity among conditions are reported as fold difference normalized to the sample with no additions.

Abbreviations

ATCC: American Type Culture Collection; BCA: Bicinchoninic acid; GPCRs: G protein coupled receptors; FBS: Fetal bovine serum; HRP: Horseradish peroxidase; PCa: Prostate cancer; PI3K: Phosphoinositide-3 kinase; RPMI: Roswell Park Memorial Institute; SDS-PAGE: Sodium dodecyl sulfate-polyacrylamide gel electrophoresis; TTBS: Tris-Tween Buffered Saline.

Competing interests

The authors declare that they have no competing interests.

Authors' contributions

CH carried-out all experiments, quantified protein levels, and analyzed data with the assistance of PS, RS, PG, DT, and SS. JL conceived the study, participated in its design with all authors, coordinated and helped to draft the manuscript with the assistance of all authors. All authors read and approved the final manuscript.

Acknowledgments

The content of this manuscript benefited from many fruitful conversations with members of the Morehouse School of Medicine. This work benefited from the cooperation between investigators from the Morehouse School of Medicine and the Wallace Tumor Institute at the University of Alabama at Birmingham via the National Cancer Institute sponsored "Comprehensive Minority Institution / Cancer Center Partnership". This study was supported by funds from National Institute of Health Grants S21MD000101, G12RR03034, G12MD007602, U54CA118638, and Department of Defense (DoD) Prostate Cancer Research Program Award W81XWH-06-1-0562, and W81XWH-11-1-0109.

Author details

¹Department of Pathology, Beth Israel Deaconess Medical Center, Harvard Medical School, Boston, MA, USA. ²School of Natural Sciences, Center of Life Sciences, Central University of Jharkhand, Brombe, Ranchi, India. ³Department of Microbiology, Biochemistry, & Immunology, Morehouse School of Medicine, Atlanta, GA, USA. ⁴Laboratory of Immunology, National Institute on Aging, National Institute of Health, Bethesda, Maryland, USA.

Received: 12 February 2013 Accepted: 5 June 2013

Published: 18 June 2013

References

1. Boege FF, Neumann EE, Helmreich EJE: Structural heterogeneity of membrane receptors and GTP-binding proteins and its functional consequences for signal transduction. *FEBS J* 1991, **199**:1–15.
2. Pierce KL, Premont RT, Lefkowitz RJ: Seven-transmembrane receptors. *Nat Rev Mol Cell Biol* 2002, **3**:639–650.
3. Offermanns S, Simon MI: Organization of transmembrane signalling by heterotrimeric G proteins. *Cancer Surv* 1996, **27**:177–198.
4. Oldham WM, Hamm HE: Heterotrimeric G protein activation by G-protein-coupled receptors. *Nat Rev Mol Cell Biol* 2008, **9**:60–71.
5. Beecroft MD, Taylor CW: Incremental Ca²⁺ mobilization by inositol trisphosphate receptors is unlikely to be mediated by their desensitization or regulation by luminal or cytosolic Ca²⁺. *Biochem J* 1997, **326**:215–220.
6. Simon MIM, Strathmann MPM, Gautam NN: Diversity of G proteins in signal transduction. *Science* 1991, **252**:802–808.
7. Downes GB, Gautam N: The G protein subunit gene families. *Genomics* 1999, **62**:544–552.
8. Clapham DE, Neer EJ: New roles for G-protein beta gamma-dimers in transmembrane signalling. *Nature* 1993, **365**:403–406.
9. Clapham DE, Neer EJ: G protein beta gamma subunits. *Annu Rev Pharmacol Toxicol* 1997, **37**:167–203.
10. Offermanns S: G-proteins as transducers in transmembrane signalling. *Prog Biophys Mol Biol* 2003, **83**:101–130.
11. Spiegel AM: Defects in G protein-coupled signal transduction in human disease. *Annu Rev Physiol* 1996, **58**:143–170.
12. Waugh DJJ, Wilson C, Seaton A, Maxwell PJ: Multi-faceted roles for CXC-chemokines in prostate cancer progression. *Front Biosci* 2008, **13**:4595–4604.

13. Bonfil RD, Chinni S, Fridman R, Kim H-R, Cher ML: Proteases, growth factors, chemokines, and the microenvironment in prostate cancer bone metastasis. *Urol Oncol* 2007, **25**:407–411.
14. Singh S, Singh R, Sharma PK, Singh UP, Rai SN, Chung LWK, Cooper CR, Novakovic KR, Grizzle WE, Lillard JW: Serum CXCL13 positively correlates with prostatic disease, prostate-specific antigen and mediates prostate cancer cell invasion, integrin clustering and cell adhesion. *Cancer Lett* 2009, **283**:29–35.
15. Singh S, Singh R, Singh UP, Rai SN, Novakovic KR, Chung LWK, Didier PJ, Grizzle WE, Lillard JW: Clinical and biological significance of CXCR5 expressed by prostate cancer specimens and cell lines. *Int J Cancer* 2009, **125**:2288–2295.
16. Amatruda TT, Steele DA, Slepak VZ, Simon MI: G alpha 16, a G protein alpha subunit specifically expressed in hematopoietic cells. *Proc Natl Acad Sci USA* 1991, **88**:5587–5591.
17. Rodríguez-Frade JM, Martínez-A C, Mellado M: Chemokine signaling defines novel targets for therapeutic intervention. *Mini Rev Med Chem* 2005, **5**:781–789.
18. Nguyen Q-D, Faivre S, Bruyneel E, Rivat C, Seto M, Endo T, Mareel M, Emami S, Gespach C: RhoA- and RhoD-dependent regulatory switch of Galpha subunit signaling by PAR-1 receptors in cellular invasion. *FASEB J* 2002, **16**:565–576.
19. Tan W, Martin D, Gutkind JS: The Galpha13-Rho signaling axis is required for SDF-1-induced migration through CXCR4. *J Biol Chem* 2006, **281**:39542–39549.
20. George SR, O'Dowd BF, Lee SP: G-protein-coupled receptor oligomerization and its potential for drug discovery. *Nat Rev Drug Discov* 2002, **1**:808–820.
21. Rodríguez-Frade JM, Mellado M, Martínez-A C: Chemokine receptor dimerization: two are better than one. *Trends Immunol* 2001, **22**:612–617.
22. García-Fernández MO, Solano RM, Sánchez-Chapado M, Ruiz-Villavespa A, Prieto JC, Carmena MJ: Low expression of Galpha protein subunits in human prostate cancer. *J Urol* 2001, **166**:2512–2517.
23. Kelly P, Casey PJ, Meigs TE: Biologic functions of the G12 subfamily of heterotrimeric g proteins: growth, migration, and metastasis. *Biochemistry* 2007, **46**:6677–6687.
24. Kelly P, Stemmler LN, Madden JF, Fields TA, Daaka Y, Casey PJ: A role for the G12 family of heterotrimeric G proteins in prostate cancer invasion. *J Biol Chem* 2006, **281**:26483–26490.
25. Yan K, Kalyanaraman V, Gautam N: Differential ability to form the G protein betagamma complex among members of the beta and gamma subunit families. *J Biol Chem* 1996, **271**:7141–7146.
26. Wu D, Katz A, Simon MI: Activation of phospholipase C beta 2 by the alpha and beta gamma subunits of trimeric GTP-binding protein. *Proc Natl Acad Sci USA* 1993, **90**:5297–5301.
27. Blake BL, Wing MR, Zhou JY, Lei Q, Hillmann JR, Behe CI, Morris RA, Harden TK, Bayliss DA, Miller RJ, Siderovski DP: G beta association and effector interaction selectivities of the divergent G gamma subunit G gamma (13). *J Biol Chem* 2001, **276**:49267–49274.
28. Ray K, Kunsch C, Bonner LM, Robishaw JD: Isolation of cDNA clones encoding eight different human G protein gamma subunits, including three novel forms designated the gamma 4, gamma 10, and gamma 11 subunits. *J Biol Chem* 1995, **270**:21765–21771.
29. Zlotnik A: Chemokines and cancer. *Int J Cancer* 2006, **119**:2026–2029.
30. Farfel Z, Bourne HR, Iiri T: The expanding spectrum of G protein diseases. *N Engl J Med* 1999, **340**:1012–1020.
31. Han S-B, Moratz C, Huang N-N, Kelsall B, Cho H, Shi C-S, Schwartz O, Kehrl JH: Rgs1 and Gnai2 regulate the entrance of B lymphocytes into lymph nodes and B cell motility within lymph node follicles. *Immunity* 2005, **22**:343–354.
32. Liu AY, Brubaker KD, Goo YA, Quinn JE, Kral S, Sorensen CM, Vessella RL, Belldegrin AS, Hood LE: Lineage relationship between LNCaP and LNCaP-derived prostate cancer cell lines. *Prostate* 2004, **60**:98–108.
33. Debes JD, Tindall DJ: The role of androgens and the androgen receptor in prostate cancer. *Cancer Lett* 2002, **187**:1–7.
34. Casey PJ: Protein lipidation in cell signaling. *Science* 1995, **268**:221–225.
35. Bookout AL, Finney AE, Guo R, Peppel K, Koch WJ, Daaka Y: Targeting Gbetagamma signaling to inhibit prostate tumor formation and growth. *J Biol Chem* 2003, **278**:37569–37573.
36. Clar H, Langsenlehner U, Krippel P, Renner W, Leithner A, Gruber G, Hofmann G, Yazdani-Biuki B, Langsenlehner T, Windhager R: A polymorphism in the G protein beta3-subunit gene is associated with bone metastasis risk in breast cancer patients. *Breast Cancer Res Treat* 2008, **111**:449–452.
37. Martin NP, Whalen EJ, Zamah MA, Pierce KL, Lefkowitz RJ: PKA-mediated phosphorylation of the beta1-adrenergic receptor promotes Gs/Gi switching. *Cell Signal* 2004, **16**:1397–1403.
38. Zamah AM, Delahunty M, Luttrell LM, Lefkowitz RJ: Protein kinase A-mediated phosphorylation of the beta 2-adrenergic receptor regulates its coupling to Gs and Gi. Demonstration in a reconstituted system. *J Biol Chem* 2002, **277**:31249–31256.
39. Taichman RS, Cooper C, Keller ET, Pienta KJ, Taichman NS, McCauley LK: Use of the stromal cell-derived factor-1/CXCR4 pathway in prostate cancer metastasis to bone. *Cancer Res* 2002, **62**:1832–1837.
40. Kim E-S, Kim J-S, Kim SG, Hwang S, Lee CH, Moon A: Sphingosine 1-phosphate regulates matrix metalloproteinase-9 expression and breast cell invasion through S1P3-Gaq coupling. *J Cell Sci* 2011, **124**:2220–2230.
41. Santos-Alvarez J, Sánchez-Margalet V: G protein G alpha q/11 and G alpha i1,2 are activated by pancreaticatins receptors in rat liver: studies with GTP-gamma 35S and azido-GTP-alpha-32P. *J Cell Biochem* 1999, **73**:469–477.
42. Buhl AM, Johnson NL, Dhanasekaran N, Johnson GL: G alpha 12 and G alpha 13 stimulate Rho-dependent stress fiber formation and focal adhesion assembly. *J Biol Chem* 1995, **270**:24631–24634.
43. Gratacap MP, Payrastré B, Nieswandt B, Offermanns S: Differential regulation of Rho and Rac through heterotrimeric G-proteins and cyclic nucleotides. *J Biol Chem* 2001, **276**:47906–47913.
44. Booden MA, Siderovski DP, Der CJ: Leukemia-associated Rho guanine nucleotide exchange factor promotes G alpha q-coupled activation of RhoA. *Mol Cell Biol* 2002, **22**:4053–4061.
45. Whitehead IP, Zohn IE, Der CJ: Rho GTPase-dependent transformation by G protein-coupled receptors. *Oncogene* 2001, **20**:1547–1555.
46. Mellado M, Rodríguez-Frade JM, Vila-Coro AJ, Fernández S, Martín de Ana A, Jones DR, Torán JL, Martínez-A C: Chemokine receptor homo- or heterodimerization activates distinct signaling pathways. *EMBO J* 2001, **20**:2497–2507.
47. Rodríguez-Frade JM, del Real G, Serrano A, Hernanz-Falcón P, Soriano SF, Vila-Coro AJ, de Ana AM, Lucas P, Prieto I, Martínez-A C, Mellado M: Blocking HIV-1 infection via CCR5 and CXCR4 receptors by acting in trans on the CCR2 chemokine receptor. *EMBO J* 2004, **23**:66–76.
48. Vázquez-Salat N, Yuhki N, Beck T, O'Brien SJ, Murphy WJ: Gene conversion between mammalian CCR2 and CCR5 chemokine receptor genes: a potential mechanism for receptor dimerization. *Genomics* 2007, **90**:213–224.
49. Chen C, Li J, Bot G, Szabo I, Rogers TJ, Liu-Chen LY: Heterodimerization and cross-desensitization between the mu-opioid receptor and the chemokine CCR5 receptor. *Eur J Pharmacol* 2004, **483**:175–186.
50. Meijer J, Zeelenberg IS, Sipsos B, Roos E: The CXCR5 chemokine receptor is expressed by carcinoma cells and promotes growth of colon carcinoma in the liver. *Cancer Res* 2006, **66**:9576–9582.

doi:10.1186/1476-4598-12-64

Cite this article as: El-Haibi et al.: Differential G protein subunit expression by prostate cancer cells and their interaction with CXCR5. *Molecular Cancer* 2013 **12**:64.

Submit your next manuscript to BioMed Central and take full advantage of:

- Convenient online submission
- Thorough peer review
- No space constraints or color figure charges
- Immediate publication on acceptance
- Inclusion in PubMed, CAS, Scopus and Google Scholar
- Research which is freely available for redistribution

Submit your manuscript at
www.biomedcentral.com/submit

