

Methionine Adenosyltransferase 2B, HuR, and Sirtuin 1 Protein Cross-talk Impacts on the Effect of Resveratrol on Apoptosis and Growth in Liver Cancer Cells*

Received for publication, May 20, 2013, and in revised form, June 26, 2013. Published, JBC Papers in Press, June 28, 2013, DOI 10.1074/jbc.M113.487157

Heping Yang^{†1}, Yuhua Zheng^{§1}, Tony W. H. Li[‡], Hui Peng[‡], David Fernandez-Ramos^{¶1}, María L. Martínez-Chantar^{¶1}, Adriana L. Rojas^{¶1}, José M. Mato^{¶1}, and Shelly C. Lu^{‡2}

From the [†]Division of Gastroenterology and Liver Diseases, University of Southern California Research Center for Liver Diseases, the Southern California Research Center for Alcoholic and Pancreatic Diseases and Cirrhosis, Keck School of Medicine, the University of Southern California, Los Angeles, California 90033, the [§]Department of Pediatric Gastroenterology, Children's Hospital Los Angeles, Los Angeles, California 90027, and the [¶]CIC bioGUNE, Centro de Investigación Biomédica en Red de Enfermedades Hepáticas y Digestivas (Ciberehd), Technology Park of Bizkaia, 48160 Derio, Bizkaia, Spain

Background: Methionine adenosyltransferase 2B protein (MAT β) binds to resveratrol, but it exerts the opposite effects on growth and apoptosis.

Results: Resveratrol induces HuR, SIRT1, and MAT β expression. These proteins interact, which stabilizes them. MAT β induction blunts the resveratrol effect on growth and apoptosis.

Conclusion: MAT β -HuR-SIRT1 interaction impacts resveratrol actions.

Significance: This is the first demonstration of MAT β in SIRT1 signaling.

Resveratrol is growth-suppressive and pro-apoptotic in liver cancer cells. Methionine adenosyltransferase 2B (MAT2B) encodes for two dominant variants V1 and V2 that positively regulate growth, and V1 is anti-apoptotic when overexpressed. Interestingly, crystal structure analysis of MAT2B protein (MAT β) protomer revealed two resveratrol binding pockets, which raises the question of the role of MAT2B in resveratrol biological activities. We found that resveratrol induced the expression of MAT2BV1 and V2 in a time- and dose-dependent manner by increasing transcription, mRNA, and protein stabilization. Following resveratrol treatment, HuR expression increased first, followed by SIRT1 and MAT2B. SIRT1 induction contributes to increased MAT2B transcription whereas HuR induction increased MAT2B mRNA stability. MAT β interacts with HuR and SIRT1, and resveratrol treatment enhanced these interactions while reducing the interaction between MAT β and MAT α 2. Because MAT β lowers the K_i of MAT α 2 for *S*-adenosylmethionine (AdoMet), this allowed steady-state AdoMet level to rise. Interaction among MAT β , SIRT1, and HuR increased stability of these proteins. Induction of MAT2B is a compensatory response to resveratrol as knocking down MAT2BV1 potentiated the resveratrol pro-apoptotic and growth-suppressive effects, whereas the opposite occurred with

V1 overexpression. The same effect on growth occurred with MAT2BV2. In conclusion, resveratrol induces HuR, SIRT1, and MAT2B expression; the last may represent a compensatory response against apoptosis and growth inhibition. However, MAT β induction also facilitates SIRT1 activation, as the interaction stabilizes SIRT1. This complex interplay among MAT β , HuR, and SIRT1 has not been previously reported and suggests that these proteins may regulate each other's signaling.

Resveratrol (3,4,5-trihydroxy-trans-stilbene, RSV),³ a naturally occurring polyphenol that exists in grapes, berries, peanuts, and other plant sources, is reported to possess both chemopreventive and chemotherapeutic activities in several cancers including liver cancer (1). Despite the identification of numerous molecular targets, the underlying mechanisms involved in the anti-cancer activities of resveratrol are not completely understood. RSV activates sirtuin 1 (SIRT1), which is a major mediator of RSV effects (2, 3).

Methionine adenosyltransferase (MAT) is an essential enzyme that catalyzes the formation of *S*-adenosylmethionine (AdoMet) from methionine and ATP (4). Three distinct forms of MAT (MATI, MATII, and MATIII), encoded by two distinct genes (MAT1A and MAT2A), have been identified in mammals (4). MAT1A encodes for α 1, which forms a tetramer (MATI) and dimer (MATIII) that are largely expressed in normal hepatocytes (4). MATII is a polymeric complex composed of catalytic subunit MAT α 2, encoded by MAT2A, and regulatory MAT β subunit, encoded by MAT2B (4). The MAT β regulatory

* This work was supported, in whole or in part, by National Institutes of Health Grant R01DK51719 (to S. C. L., H. Y., and J. M. M.). This work was also supported by Plan Nacional of I+D SAF 2011-29851 (to J. M. M.), ETORTEK-2011, Sanidad Gobierno Vasco 2008, Educación Gobierno Vasco 2011 (PI2011/29), and Fondo de Investigación Sanitaria (PI11/01588) (to M. L. M.-C.). Huh7 and HepG2 cells were provided by the Cell Culture Core of the University of Southern California Research Center for Liver Diseases under Grant P30DK48522.

¹ Both authors share first authorship.

² To whom correspondence should be addressed: Division of Gastroenterology and Liver Diseases, Keck School of Medicine University of Southern California, HMR 415, 2011 Zonal Ave., Los Angeles, CA 90033. Tel.: 323-442-2441; Fax: 323-442-3234; E-mail: shellylu@usc.edu.

³ The abbreviations used are: RSV, resveratrol; AdoMet, *S*-adenosylmethionine; co-IP, co-immunoprecipitation; HCC, hepatocellular carcinoma; HuR, human antigen R; IP, immunoprecipitation; MAT, methionine adenosyltransferase; RNP-IP, ribonucleoprotein immunoprecipitation; SIRT1, sirtuin 1; V1, variant 1; V2, variant 2.

MAT2B-HuR-SIRT1 Cross-talk in Resveratrol Action

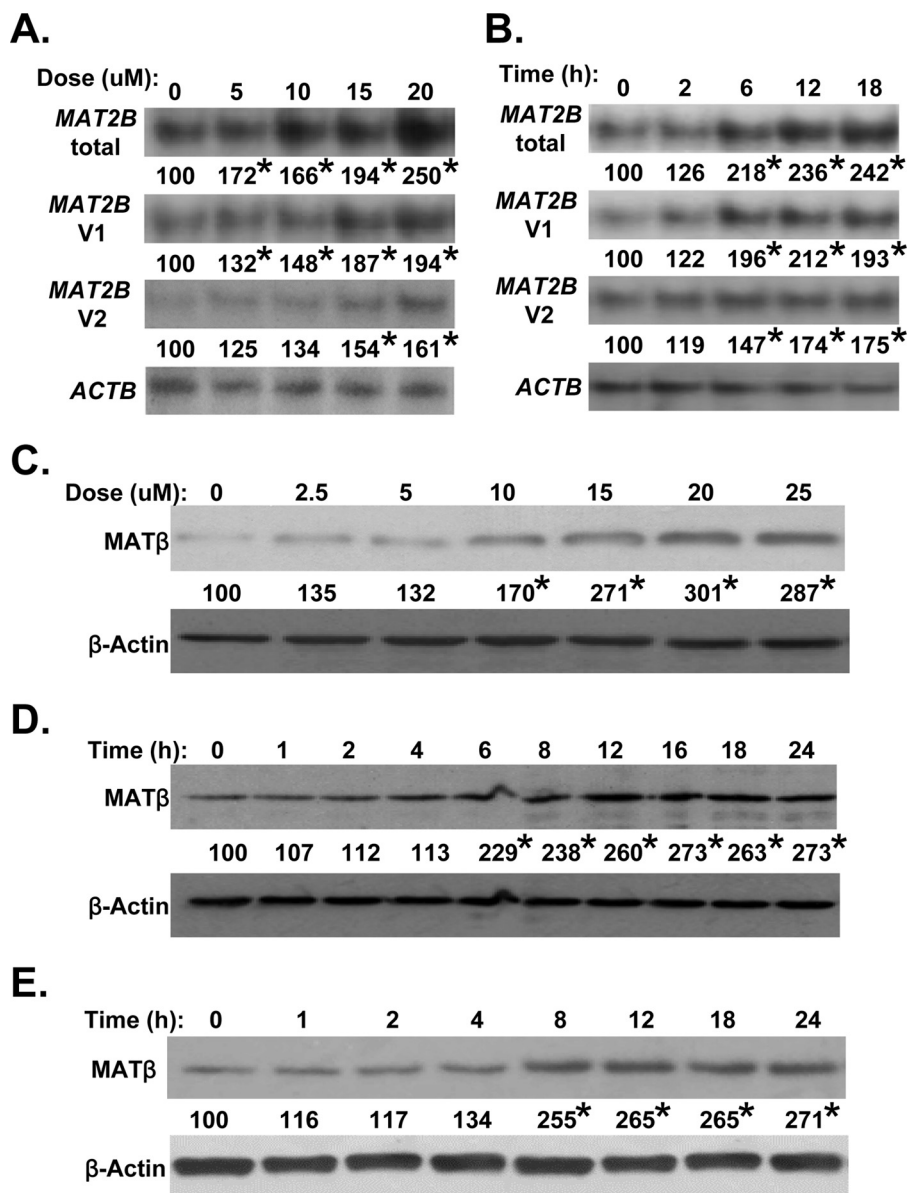


FIGURE 1. Effect of RSV on MAT2B expression. Huh7 and HepG2 cells were treated with RSV, and mRNA levels of *MAT2B* variants were measured by Northern blotting, and total MAT2B protein (MAT β) levels were measured by Western blotting as described under "Experimental Procedures." The dose-dependent effect of RSV (for 12 h) in Huh7 cells at the mRNA (A) and protein (C) levels shows maximal response at 15 μM . The time-course response of RSV (at 15 μM) at the mRNA (B) and protein (D) levels shows maximal response at 12 h. A similar response to 15 μM RSV in time dependence also occurred in HepG2 cells (E). Numbers below the blots represent the densitometric values expressed as percentage of their respective controls from three independent experiments. *, $p < 0.05$ versus untreated control (A and C) or time 0 (B, D, and E).

subunit lowers the K_m of MATII for methionine and the K_i for AdoMet (5). *MAT2B* has multiple splice forms; two dominant forms are V1 and V2 that are differentially expressed in normal human tissues (6).

In hepatocellular carcinoma (HCC), *MAT1A* is often silenced whereas *MAT2A* and *MAT2B* are induced (4, 7, 8). Both MAT2BV1 and V2 offer the cancer cell a growth advantage, and V1 also regulates apoptosis (6). Although MAT β is best known for regulation of MATII enzymatic activity, our recent works revealed a much broader role for MAT2B protein in cancer biology. We reported that both MAT β variants (MAT β V1 and MAT β V2) are found in the nucleus, and they interact with human antigen R (HuR), a RNA-binding protein that stabilizes its target mRNAs, which include several cyclins (9). Overex-

pression of MAT2B variants resulted in higher cytoplasmic HuR content, higher expression of its target genes such as cyclin D1 and cyclin A, and growth (9). More recently we also found that MAT β variants act as a scaffold that is essential in MEK/ERK signaling (10). Interestingly, the crystal structure of MAT β reveals two RSV binding pockets per MAT β protomer (11). Because RSV is growth-suppressive and pro-apoptotic but MAT β variants exert the opposite effect in liver cancer cells, we undertook this study to examine how RSV affects MAT2B biology and how MAT2B in turn affects RSV actions. In the course of this study we uncovered a novel cross-talk among MAT2B, HuR, and SIRT1 and the interdependence they have on each other. Our results also suggest that these proteins may regulate each other's signaling pathways.

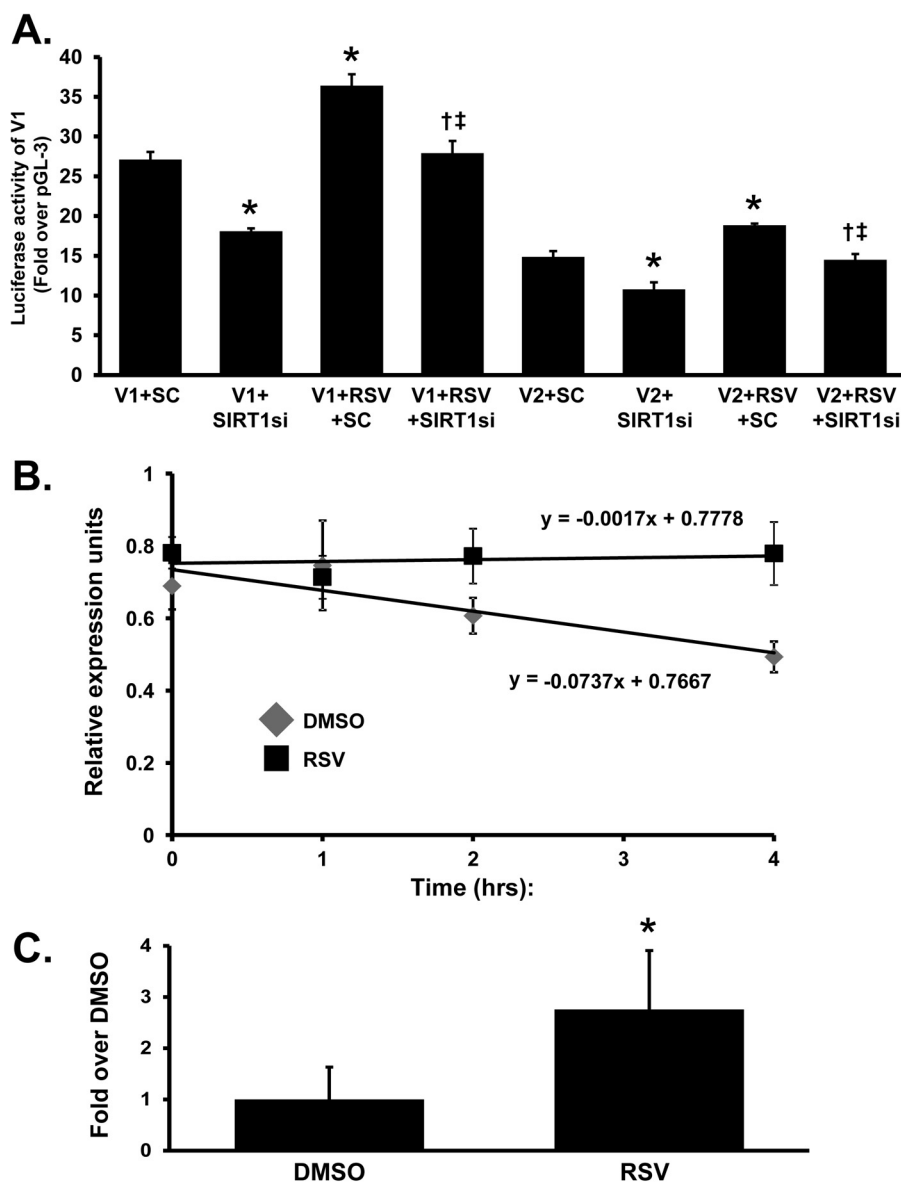


FIGURE 2. Effect of RSV on MAT2BV1 and V2 promoter activity and MAT2B mRNA stability. *A*, HepG2 cells were transfected with V1 or V2 promoter constructs and SIRT1 siRNA (SIRT1si) or scramble siRNA (SC) prior to treatment with RSV for 12 h as described under “Experimental Procedures.” SIRT1 knockdown lowered basal V1 and V2 promoter activity and blunted the RSV-mediated increase in V1 and V2 promoter activity. *B*, results of mRNA stability assays in HepG2 cells performed as described under “Experimental Procedures” are shown. DMSO, dimethyl sulfoxide. *C*, RNP-IP analysis was performed as described under “Experimental Procedures” to demonstrate HuR binding to the MAT2B 3'-UTR sequence in HepG2 cells. Results are mean \pm S.E. (error bars) from three independent experiments. *, $p < 0.05$ versus respective controls; †, $p < 0.05$ versus either V1+SIRT1 siRNA or V2+SIRT1 siRNA; ‡, $p < 0.05$ versus either V1+RSV+SC or V2+RSV+SC treatment.

EXPERIMENTAL PROCEDURES

Materials—RSV was obtained from Sigma. [α - 32 P]dCTP (3,000 Ci/mmol) was purchased from PerkinElmer Life Sciences. All other reagents were of analytical grade and obtained from commercial sources.

Cell Culture and Transfection—HepG2 and Huh7 HCC cell lines were obtained from the Cell Culture Core facility at the University of Southern California Research Center for Liver Diseases. HepG2 and Huh7 cells were maintained in DMEM with 10% fetal bovine serum.

The expression plasmids of full-length human MAT2BV1 and V2 (pcDNA3.1-V5-His/MAT2BV1 and pcDNA3.1-V5-His/MAT2BV2) were described previously (6). For gene over-expression experiments, 1.5×10^5 HepG2 or 1×10^5 Huh7 cells

per well of a 6-well plate were transiently transfected with V1 and V2 expression plasmids or empty vector using Superfect (Qiagen) according to the manufacturer's protocol. For gene knockdown studies, 10 nM siRNA against MAT2B (sc-7553) ELAVL1 (gene name for HuR, sc-35619), SIRT1 (sc-40986) and equivalent scramble control (sc-37007) were obtained from Santa Cruz Biotechnology and were delivered into HepG2 or Huh7 cells by Lipofectamine RNAiMAX (Invitrogen) following the manufacturer's protocol. Twenty-four hours after transfection, RSV (15 μ M) was added to cells for different durations, depending on the experiment.

Northern and Western Blot Analysis—Northern blotting probes for V1 and V2 were described previously (6). Total cellular RNA was extracted by using TRIzol reagent (Invitrogen) according to

MAT2B-HuR-SIRT1 Cross-talk in Resveratrol Action

the manufacturer's instructions. Equal amounts of total RNA (15 μg) were denatured, fractionated by electrophoresis on a 15% polyacrylamide-8 M urea gel, electroblotted, and cross-linked onto a nylon membrane. Northern blot analysis was performed as described using UltraHyb-Oligo (Invitrogen). As a control for normalization of RNA expression levels, blots were hybridized with an oligonucleotide probe complementary to the β -actin. Nuclear and cytosolic protein extracts from HepG2 and Huh7 cells after different treatments were isolated as described (12) and subjected to Western blot analysis. The modified radioimmunoprecipitation assay buffer recipe was 150 mM NaCl, 0.5% deoxycholate, 0.1% SDS, 1% Nonidet P-40, 50 mM Tris-HCl, pH 7.5. The protease and phosphatase inhibitor mixture was 1 mM EDTA, 1 mM EGTA, 25 mM NaF, 0.1 mM sodium orthovanadate, 0.2 mM PMSF, 5 $\mu\text{g}/\text{ml}$ leupeptin. Fifteen micrograms of total protein extract was resolved on 12.5% SDS-polyacrylamide gels. Membranes were probed with antibodies to SIRT1, HuR, MAT β (recognize both variants), and forkhead box O3 α (Abcam). To ensure equal loading, membranes were stripped and reprobed with anti- β -actin or histone H3 antibodies. Semiquantitative analysis was performed for both Northern and Western blots using Quantity One (Bio-Rad).

Quantitative PCR—TRIzol RNA solution (Invitrogen) was used for RNA isolation. cDNA synthesis and quantitative real-time PCR were done as described previously (6). Primers and probes for quantitative PCR for *MAT2B*, *ELAVL1*, and *SIRT1* were purchased from Invitrogen. Hypoxanthine phosphoribosyltransferase 1 (*HPRT1*) was used as housekeeping gene. The thermal profile consisted of initial denaturation at 95 $^{\circ}\text{C}$ for 3 min followed by 45 cycles at 95 $^{\circ}\text{C}$ for 3 s and at 60 $^{\circ}\text{C}$ for 30 s. The cycle threshold (Ct value) of the target genes was normalized to that of *HPRT1* to obtain the ΔCt . The ΔCt was used to find the relative expression of target genes according to the formula: relative expression = $2^{-\Delta\Delta\text{Ct}}$, where $\Delta\Delta\text{Ct} = \Delta\text{Ct}$ of target genes in treatment condition $-\Delta\text{Ct}$ of the target gene under a control condition.

Immunoprecipitation (IP) Studies—IP studies for cell cytoplasm were carried out as described previously with minor modifications (10). Briefly, cells were lysed in a modified radioimmunoprecipitation assay buffer with protease and phosphatase inhibitors. A total of 10^7 cells/100-mm dish was used to co-IP with antibodies against HuR, MAT β , and SIRT1. Western blotting was carried out to detect HuR, MAT β , SIRT1, and β -actin. Clean Blot IP Detector Reagent (Thermo Scientific) was used to reduce background. Normal IgG (Santa Cruz Biotechnology) was used as a control. Also, a total of 10^7 cells/100-mm dish was used for cell nuclear extraction. The nuclear extraction kit was purchased from Sigma. Co-IP with antibodies against HuR, MAT β , and SIRT1 and Western blotting were carried out to detect HuR, MAT β , SIRT1, and histone H3.

Pulldown Assay—To determine whether MAT β and SIRT1 can interact directly, 1 μg of recombinant SIRT1 protein (rSIRT1; Active Motif, Carlsbad, CA) was immobilized to the protein A/G plus agarose by incubating the protein with anti-SIRT1 antibody and subsequently the beads. The SIRT1 bound beads were washed and mixed with recombinant MAT β (rMAT2B; Novus) at 4 $^{\circ}\text{C}$ for 4 h. After extensive washing, the

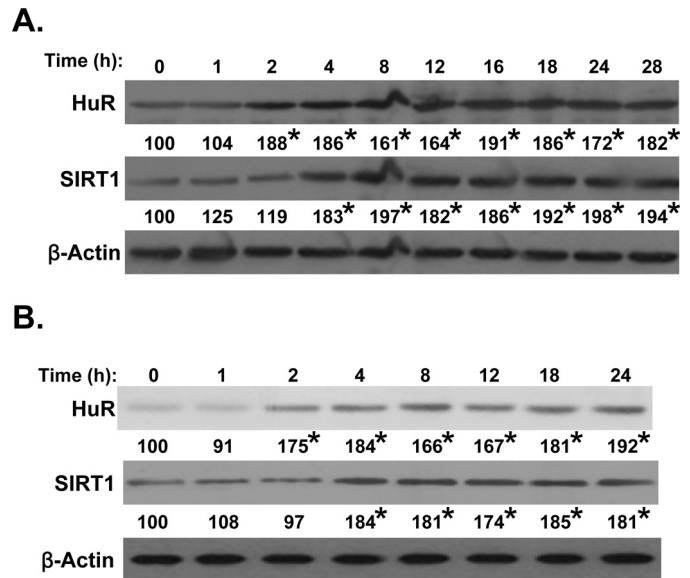


FIGURE 3. RSV-induced HuR and SIRT1 protein expression in Huh7 and HepG2 cells. Western blot analysis examined the effect of RSV over time on HuR and SIRT1 protein expression in Huh7 (A) and HepG2 (B) cells. β -Actin served as a loading control. The values under each blot represent the densitometric values expressed as percentage of time zero control for each time point from three independent experiments. *, $p < 0.05$ versus time 0 control.

proteins bound to the beads were eluted with SDS sample buffer and immunoblotted using antibodies to MAT β and SIRT1.

Luciferase Assays—*MAT2BV1* promoter constructs were described previously (6). To clone the promoter region of the human *MAT2BV2*, a primer corresponding to -2289 to -2316 and a primer corresponding to -2947 to -2925 of the human *MAT2BV2* promoter region (GenBank accession no. AY223864) was used for PCR amplification (Advantage 2 PCR Enzyme system; BD Biosciences Clontech) of a human genomic library (Genome Walker; BD Biosciences Clontech) prepared by DraI, EcoRV, PvuII, or SspI restriction digests. A specific 660-bp fragment from the DraI library was isolated by gel electrophoresis and cloned into TOPO pCR2.1 (Invitrogen) and subsequently used to transform Top10F' competent cells (Invitrogen). This 0.66-kb 5'-flanking region of the human *MAT2BV2* was subcloned into the KpnI/XhoI site of promoterless pGL3-basic vector. Transient transfection of V1 and V2 promoter construct and a control *Renilla* luciferase expression vector was carried out in Huh7 and HepG2 cells with Superfect (Qiagen) for 24 h followed by RSV treatment for another 12 h. Luciferase assays were performed using the Dual Luciferase Reporter Assay System (Promega) as directed by the manufacturer's suggested protocol. Firefly luciferase activity was normalized to *Renilla* luciferase activity.

Measurement of mRNA and Protein Stability—After 5 h of RSV treatment, HepG2 cells were treated with 5 $\mu\text{g}/\text{ml}$ actinomycin D (Sigma) to stop gene transcription, or 10 $\mu\text{g}/\text{ml}$ cycloheximide (Sigma) to stop protein translation. At 0, 1, 2, 3, and 4 h after actinomycin D or cycloheximide treatment, real-time PCR was used to determine mRNA expression, and Western blotting was done to determine protein expression. The change in mRNA or protein levels over time after actinomy-

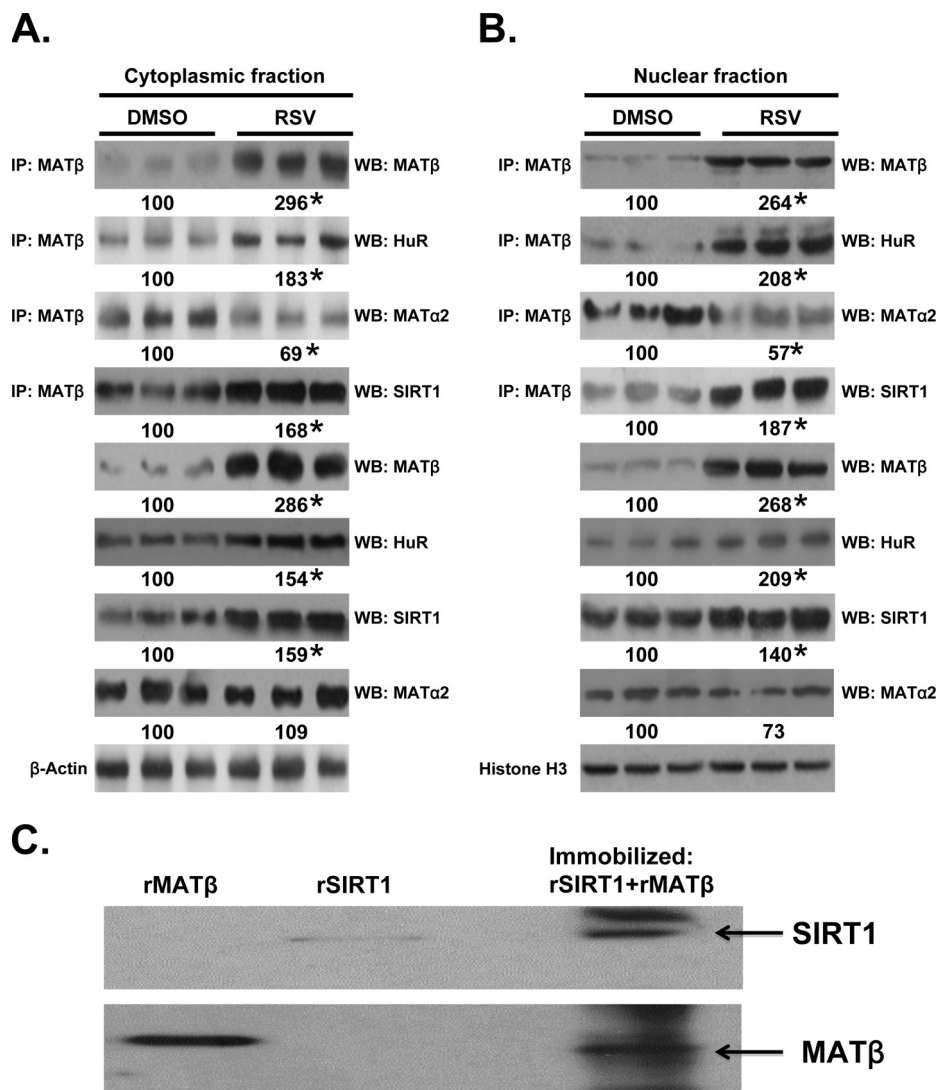


FIGURE 4. Resveratrol increased MATβ interaction with SIRT1 and HuR while reducing its interaction with MATα2. A and B, co-IP experiments with cytoplasmic (A) and nuclear extracts (B) using an antibody to total MATβ in the presence or absence of RSV in Huh7 cells and Western blotting (WB) using antibodies to MATβ, SIRT1, HuR, and MATα2 were performed as described under "Experimental Procedures." SIRT1 and HuR co-immunoprecipitated with MATβ and RSV enhanced these interactions with MATβ. RSV treatment reduced the interaction between MATβ and MATα2 despite no reduction in total MATα2 levels. β-Actin was used as a loading control for cytoplasmic extracts and histone H3 for nuclear extracts. C, *in vitro* pull-down binding assay using immobilized recombinant SIRT1 with recombinant MATβ, followed by Western blotting of both SIRT1 and MATβ is shown. 10 ng of rSIRT1 and rMATβ was loaded as an indicator for the migration of the proteins. Numbers below the blots represent the densitometric values expressed as percentage of their respective controls. Results are mean from three independent experiments. *, $p < 0.05$ versus dimethyl sulfoxide (DMSO) control.

cin D or cycloheximide treatment was used to determine the mRNA and protein half-lives, respectively, using linear regression analysis.

Ribonucleoprotein Immunoprecipitation (RNP-IP)—For immunoprecipitation of endogenous ribonucleoprotein (RNP) complexes, whole cell extracts were incubated (1 h, 4 °C) with a 50% (v/v) suspension of protein A-Sepharose beads (Sigma) pre-coated overnight with 30 mg of either IgG1 (BD Biosciences) or anti-HuR (Santa Cruz Biotechnology) as described (13). For the isolation of RNA in the IP material, beads were incubated with 100 μl of NT2 buffer containing 20 units of RNase-free DNase I (Invitrogen) for 15 min at 37 °C, washed with wash buffer, and further incubated in 100 μl of wash buffer containing 0.1% SDS and 0.5 mg/ml proteinase K (Invitrogen) for 15 min at 55 °C. RNA was extracted with acid-phenol-CHCl₃ and precipitated

overnight in the presence of 5 μl of glycoblue (Invitrogen), 25 μl of sodium acetate, pH 5.2, and 625 μl of 100% ethanol. Finally, bound MAT2B mRNA was measured by real-time PCR and normalized to GAPDH and to the unspecific bound of IgG1 as described (14).

Growth and Apoptosis Assays—Growth and apoptosis were measured as we described (6).

AdoMet Level Measurements—AdoMet levels were measured as described (15) in Huh7 cells after RSV treatment for 16, 20, and 24 h.

Statistical Analysis—Data are given as means ± S.E. Statistical analysis was performed using analysis of variance followed by Fisher's test for multiple comparisons. For changes in mRNA and protein levels, ratios of genes or proteins to housekeeping genes or proteins densitometric values were compared. All p

MAT2B-HuR-SIRT1 Cross-talk in Resveratrol Action

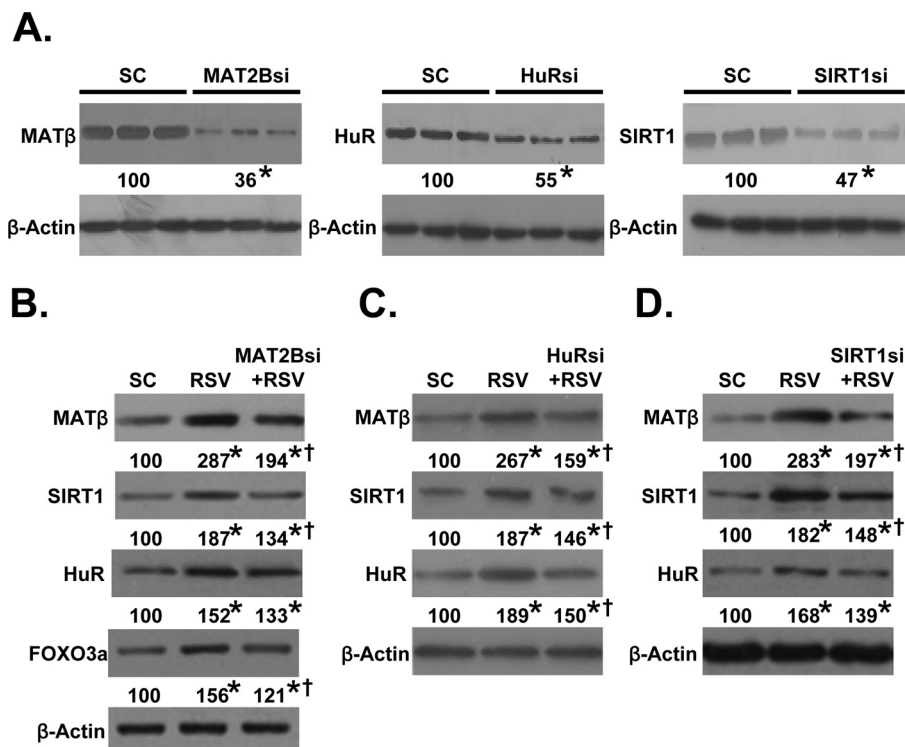


FIGURE 5. Knockdown of MAT2B, HuR, or SIRT1 attenuated resveratrol-mediated induction of these proteins. *A*, Western blot analysis shows knockdown efficiency of MAT2B, HuR, or SIRT1 siRNA (si) at the protein level in Huh7 cells. *B–D*, cells were treated with siRNA against MAT2B (*B*), HuR (*C*), and SIRT1 or scramble siRNA (SC) (*D*) control with or without RSV for 12 h followed by Western blotting as described under “Experimental Procedures.” β -Actin served as loading control. Numbers below each blot represent the densitometric values expressed as percentage of SC. Results are the mean from three independent experiments. *, $p < 0.05$ versus SC; †, $p < 0.05$ versus RSV treatment.

values were derived from at least three independent experiments. Significance was defined by $p < 0.05$.

RESULTS

RSV Induces MAT2B Expression—RSV treatment in Huh7 cells increased the mRNA levels of both MAT2B variants in a dose- (Fig. 1*A*) and time- (Fig. 1*B*) dependent manner. Maximum induction occurred with 15 μ M RSV after 6 h. A similar change in MAT β levels was also observed (Fig. 1, *C* and *D*). The same occurred in HepG2 cells (Fig. 1*E*). For all subsequent studies, the RSV dose was 15 μ M, and treatment duration was 12 h unless specified otherwise.

To determine the mechanism for the increase in MAT2B mRNA level, V1 and V2 promoter activities were measured following transient transfection. Fig. 2*A* shows that RSV treatment increased the promoter activity of both variants, but only minimally (V1 promoter increased by 34%, V2 by 26%) in HepG2 cells (RSV increased their activity by approximately 50% in Huh7 cells; data not shown). Because SIRT1 is known to be a major mediator of the RSV effect on gene expression (3), we examined whether the induction required SIRT1. Knockdown of SIRT1 lowered the promoter activity of both variants; and although RSV was still able to induce their activity in the presence of SIRT1 siRNA, it was to a lower level than scramble siRNA control.

Because the increase in MAT2B variant mRNA levels is much higher than the transcriptional rate, we also examined whether the mRNA half-life might be affected. Fig. 2*B* shows that MAT2B mRNA half-life is markedly prolonged following RSV

treatment. The MAT2B 3'-UTR region (ATTTA at 1948–1952) is a consensus binding site for HuR (AUUUA pentamer). To determine whether RSV treatment is able to modify HuR binding to MAT2B mRNA, we performed a RNP-IP assay by which we immunoprecipitated HuR bound to its target mRNAs and obtained a cDNA library that we can analyze by quantitative PCR. As shown in Fig. 2*C*, the quantitative real-time PCR analysis of the MAT2B mRNA bound to HuR reveals that RSV significantly increased the binding of HuR to MAT2B mRNA.

RSV Induces HuR and SIRT1 Expression in Huh7 and HepG2 Cells—RSV is known to activate SIRT1 activity (2, 16) as well as increase SIRT1 expression at the mRNA level (17). Consistent with this, the SIRT1 protein level is increased after RSV treatment in both Huh7 (Fig. 3*A*) and HepG2 (Fig. 3*B*) cells. Because we observed increased HuR binding to MAT2B mRNA, we also measured HuR expression following RSV and found the HuR protein level increased maximally by 2 h after RSV treatment in both liver cancer cells, prior to SIRT1 induction (by 4 h) and MAT β induction (by 6–8 h; Fig. 1, *D* and *E*). ELAVL1 (HuR) mRNA level was transiently increased following RSV (increased by 63% at 2 h but was back to base line by 4 h and remained at base line up to 24 h, data not shown).

Effect of RSV Treatment on MAT β Interaction with HuR, MAT α 2, and SIRT1—MAT β variants are known to interact with HuR and MAT α 2 and to localize in both the cytoplasm and nucleus (4, 9). RSV treatment increased the interaction between MAT β and HuR in both cytosol and nucleus, but decreased the interaction between MAT β and MAT α 2 (Fig. 4,

A and B). RSV treatment did not affect MAT α 2 protein level in these compartments. Interestingly, MAT β also interacts with SIRT1 in the basal state, and this interaction was enhanced following RSV treatment in both cytosol and nucleus. Direct interaction between the two proteins was also demonstrated using recombinant MAT β and SIRT1 (Fig. 4C).

Induction of MAT β , SIRT1, and HuR Requires Each Other following RSV—To see whether the increase in protein levels of MAT β , HuR, and SIRT1 requires each other, the expression of each was reduced by siRNA. Fig. 5A shows the knockdown efficiency of these siRNAs at the protein level, and they are 45% (HuR), 53% (SIRT1), and 64% (MAT β). At the mRNA level, MAT2B siRNA lowered it by 95%, SIRT1 siRNA by 87%, and ELAVL1 (HuR) siRNA by 82.5%. RSV treatment was not able to raise their mRNA levels in the presence of respective siRNA (data not shown). Knockdown of MAT2B blunted the effect of RSV on the increase in protein levels of MAT β , SIRT1, and HuR as well as SIRT1 downstream target forkhead box O3 α (18) (Fig. 5B). Note however that despite 95% reduction in MAT2B mRNA level, the protein level was still nearly doubled following RSV, suggesting that MAT2B protein is being stabilized as well. Similarly, ELAVL1 (HuR) (Fig. 5C) and SIRT1 (Fig. 5D) knockdown blunted the RSV-induced increase in MAT β , SIRT1, and HuR protein levels. Like MAT2B siRNA, ELAVL1 (HuR) and SIRT1 siRNAs were also highly efficient, but their protein levels still remained significantly elevated after RSV. These results also suggest that SIRT1 and HuR were stabilized at the protein level following RSV.

To further examine whether RSV treatment affected protein stability of MAT β , SIRT1, and HuR, their respective protein levels were measured following inhibition of *de novo* protein synthesis by cycloheximide after an initial RSV treatment for 5 h. Fig. 6 shows that the protein half-life of all three increased following RSV treatment, nearly doubling for HuR and more than doubled for MAT β and SIRT1.

MAT2B Induction Is a Compensatory Response to RSV Proapoptotic and Growth-suppressive Effect—RSV induced apoptosis in a dose- and time-dependent fashion (Fig. 7, A and B). Overexpression of MAT2BV1 (but not V2) attenuated, whereas knockdown of MAT2BV1 (but not V2) worsened RSV-induced apoptosis (Fig. 7C). RSV treatment caused growth suppression, and this was attenuated by overexpression of either MAT2BV1 or V2 and worsened by knockdown of V1 (Fig. 7D).

RSV Treatment Affects Steady-state AdoMet Level—Both MAT β V1 and MAT β V2 are known to lower the K_i of MAT α 2 for AdoMet (19); and because RSV treatment decreased the association of MAT β with MAT α 2, we measured the steady-state AdoMet level following RSV treatment. The AdoMet level increased significantly by 20 h after RSV treatment (Fig. 7E).

DISCUSSION

RSV, a naturally occurring polyphenol readily available in the diet, is reported to exert health benefit in a variety of conditions (20). RSV has been shown in experimental models to exert chemopreventive and therapeutic efficacy against HCC (21, 22). This may be related to its anti-proliferative and pro-apoptotic effects in liver cancer cells; however, the signaling mechanisms involved are still being defined (1, 21, 22). The effects of RSV in

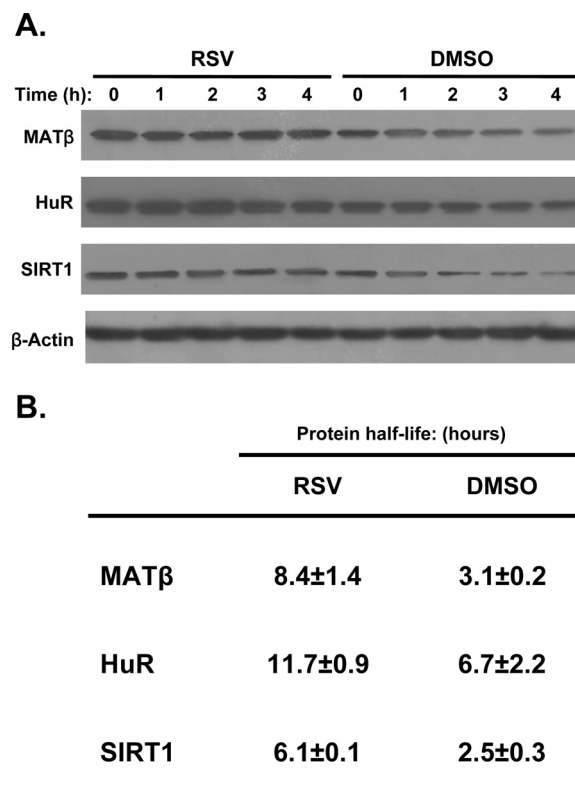


FIGURE 6. Resveratrol increases MAT β , HuR, and SIRT1 protein stability. A, protein stability assays using cycloheximide followed by Western blot analysis were performed to assess the RSV effect on protein stability of MAT β , HuR, and SIRT1 in Huh7 cells. B, table shows MAT β , HuR, and SIRT1 protein half-lives as a result of RSV treatment compared with DMSO control. Results are mean \pm S.E. of two (HuR and SIRT1) and three (MAT β) experiments.

liver cancer cells appear to be the exact opposite of MAT β , which we have shown to be overexpressed in HCC and to be pro-growth and protect against apoptosis (6). The report that RSV binds avidly to MAT β (11) thus raised the question as to how this binding would affect each other's biological actions.

Our studies uncovered a complex and novel cross-talk among three proteins (MAT β , HuR, and SIRT1) whose expression is induced by RSV (Figs. 1 and 3). We first found that MAT2B expression is induced at both the mRNA and protein levels following RSV treatment in two different HCC lines. Although RSV treatment increased the promoter activity of both MAT2BV1 and V2, the degree of increase was not sufficient to explain the increase in the mRNA level. This led us to examine whether MAT2B mRNA stability was affected by RSV, and indeed, we found that RSV treatment increased HuR binding to the MAT2B 3'-UTR, leading to its stabilization (Fig. 2C). The reason for the increase in HuR binding was that RSV treatment also induced the expression of HuR. This to our knowledge has not been reported. We showed previously that MAT β variants interact with HuR, and increased expression of MAT β variants resulted in more cytoplasmic HuR content and higher expression of HuR target mRNAs such as cyclin D1 and cyclin A (9). Here we show a reciprocal regulation where increased HuR can further raise MAT2B expression by stabilizing MAT2B mRNA.

SIRT1 is one of the best-studied RSV targets. SIRT1 is an NAD⁺-dependent deacetylase that regulates diverse cellular

MAT2B-HuR-SIRT1 Cross-talk in Resveratrol Action

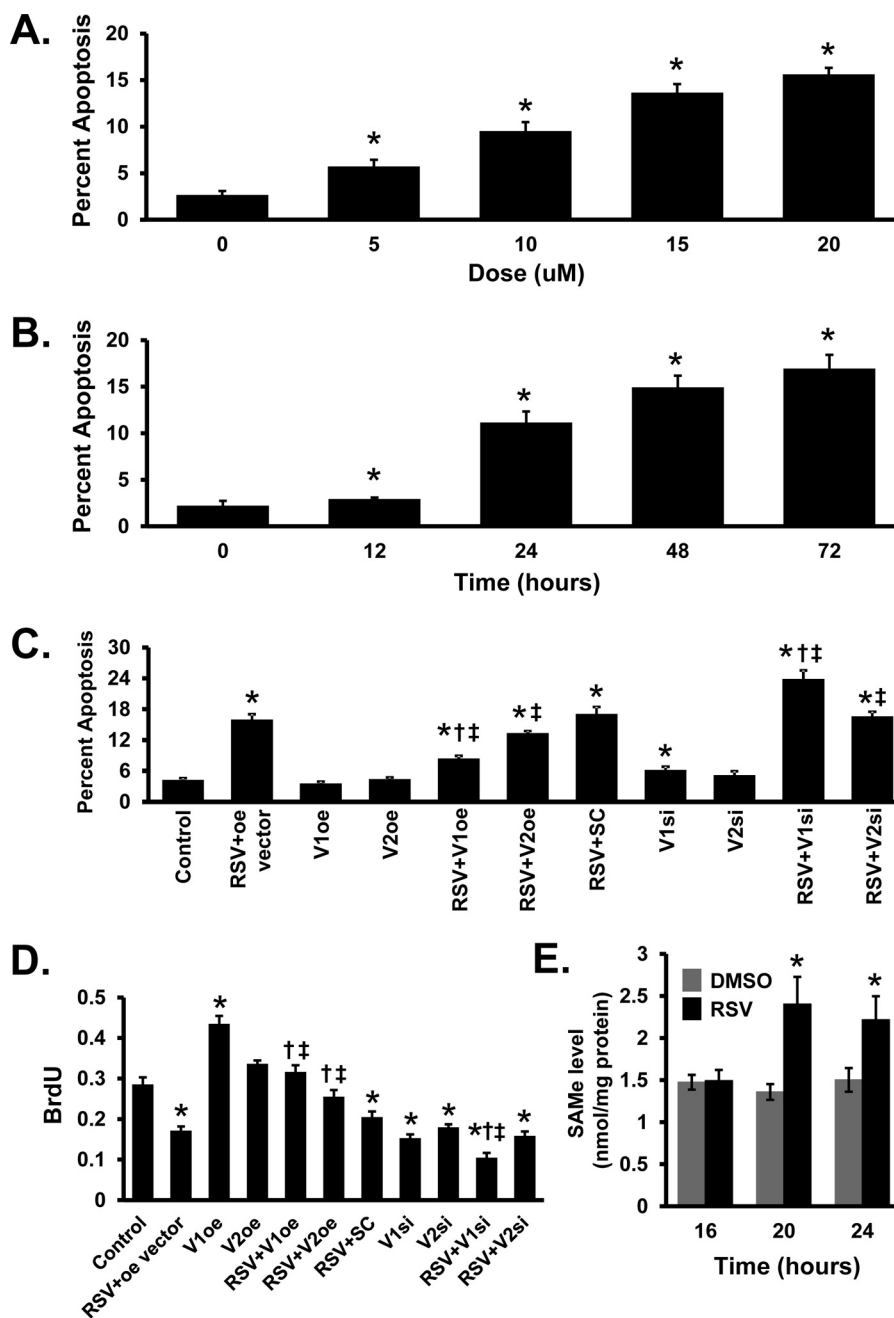


FIGURE 7. Effects of resveratrol, MAT2BV1, and V2 expression on apoptosis, growth, and AdoMet levels. *A*, Hoechst staining to assess apoptosis levels with increasing doses of RSV in Huh7 cells. *B*, apoptosis levels examined in Huh7 cells at 15 μ M RSV in time-course experiments. *C* and *D*, apoptosis (*C*) and cellular growth (*D*) by bromodeoxyuridine (*BrdU*) incorporation in Huh7 cells either overexpressing (*oe*) or siRNA (*si*) knockdown of *V1* or *V2*, in the presence or absence of RSV. *E*, AdoMet levels in Huh-7 cells treated with RSV from 16 to 24 h. *DMSO*, dimethyl sulfoxide. Results are mean \pm S.E. (error bars) from three independent experiments. *, $p < 0.05$ versus control; †, $p < 0.05$ versus RSV+oe or RSV+SC; ‡, $p < 0.05$ versus respective *V1* or *V2* oe or si controls.

functions largely via its ability to deacetylate key regulatory proteins to affect gene expression (23). RSV activates SIRT1 by lowering the K_m of SIRT1 for its substrates (2), in addition to increasing SIRT1 expression at the mRNA level (17). Consistent with these reports, we confirmed that SIRT1 expression increased following RSV in the two liver cancer cell lines, but it occurred after the induction of HuR. Interestingly, HuR has also been shown to stabilize SIRT1 mRNA (24). Thus, it is possible that the increase in HuR expression contributed to the increase in SIRT1 expression following RSV treatment. SIRT1 in turn regulates MAT2B at the transcriptional level. Interest-

ingly, the basal MAT2B transcriptional activity requires SIRT1 as knockdown of SIRT1 lowered the promoter activity of both *V1* and *V2* (Fig. 2A). However, SIRT1 is not the only mechanism for the increase in MAT2B promoter activity following RSV treatment as MAT2B promoter activity still increased despite SIRT1 knockdown (but not to the full extent).

An unexpected finding from our work is that MAT β interacts with SIRT1 at base line and this was increased following RSV treatment. Furthermore, direct interaction between the two proteins was shown using recombinant proteins (Fig. 4C). RSV treatment also enhanced interaction between MAT β and

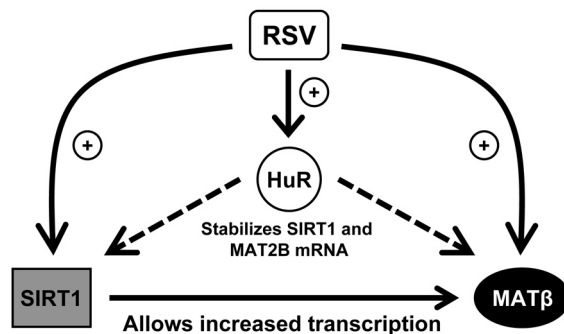
HuR. These occurred in both the cytosol and nucleus, and the increase in co-precipitated proteins (SIRT1 and HuR) with MAT β largely reflects the increase in their protein levels (Fig. 4). However, RSV treatment lowered the interaction between MAT β and MAT α 2 in both cytosolic and nuclear compartments. RSV did not alter the kinetic properties of MATII using pure recombinant proteins *in vitro* (data not shown). This suggests the possibility that interaction of MAT β with SIRT1 and HuR may interfere with the MAT β interaction with MAT α 2 *in vivo*. As expected, because the function of MAT β on MATII is to lower the K_i of MATII for AdoMet, reduced interaction between MAT β and MAT α 2 allowed steady-state AdoMet level to rise (Fig. 7E). We previously showed that raising the steady-state AdoMet level in liver cancer cells can inhibit growth and increase apoptosis (25). This suggests that this dissociation between MAT β and MAT α 2 may also contribute to the RSV-induced apoptosis and growth suppression.

Even more intriguing is the observation that full induction in protein levels of MAT β , HuR, and SIRT1 requires each other as knockdown of any one of these attenuated the ability of RSV to fully induce their protein expression (Fig. 5). This can only occur due to increased protein stability because the siRNA efficiency was very high, and it should have blocked expression from increased transcription and/or mRNA stability. Our hypothesis is that their interaction increased their protein stability. This is supported by the results showing increased MAT β , SIRT1, and HuR protein stability following RSV (Fig. 6) and that full induction requires each other (Fig. 5). Additional work will be required (such as identifying where the interactions take place and creating mutant constructs that cannot interact) to prove this hypothesis.

Our data showing that MAT β interacts with SIRT1 directly and regulates SIRT1 protein level are consistent with the known role of MAT β in HCC tumorigenesis (6, 9, 10). The role of SIRT1 in HCC is conflicting, as it has been reported to function as a tumor suppressor as well as an oncogenic protein (26). Transgenic mice overexpressing SIRT1 were protected against HCC induced by diethylnitrosamine/high fat diet, in part by blocking NF κ B-mediated inflammation and hepatic cell malignant transformation (27). However, two recent reports found SIRT1 to be overexpressed in human HCC, and its overexpression contributed to tumorigenicity and resistance to chemotherapy (26, 28). In one of the reports, 95 of 172 HCCs overexpressed SIRT1, and this was associated with higher tumor grade and poor long term survival for patients with resected HCC (28). Interestingly, the increase in SIRT1 expression was thought to be from increased protein stability as the SIRT1 mRNA level was unchanged in HCC (28). The fact that MAT β is also overexpressed in HCC (6, 10) raises the possibility that the two proteins may stabilize each other to raise their expression.

Increased MAT2B expression may represent a compensatory response to the RSV pro-apoptotic and growth-suppressive effects. Supporting this notion is the fact that blocking its induction further exacerbated the apoptosis and growth suppression whereas overexpressing MAT2B protected against these events induced by RSV (Fig. 7).

A. Pre-translational - transcription and mRNA stability



B. Post-translational - protein interactions and stability

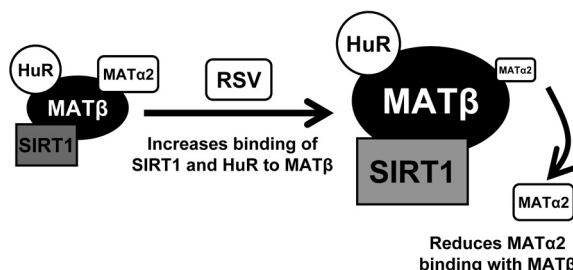


FIGURE 8. Model of MAT2B-HuR-SIRT1 interplay in resveratrol action. A, proposed pre-translational mechanism of RSV-mediated induction of *ELAVL1* (*HuR*), *MAT2B*, and *SIRT1* mRNA levels. Following RSV treatment the mRNA level of *HuR*, *MAT2B*, and *SIRT1* all increased. *HuR* expression increased first, which can stabilize *SIRT1* and *MAT2B* mRNAs. *SIRT1* can also induce *MAT2B* transcription. B, post-translational effects of RSV on *HuR*, *MATβ*, and *SIRT1*. There is basal interaction between *HuR* and *SIRT1* with *MATβ*, and this interaction is enhanced following RSV treatment. The interaction also stabilizes all three proteins. However, the basal interaction between *MATα2* and *MATβ* is reduced after RSV treatment, which allows steady-state AdoMet level to rise. This complex interplay suggests that *MATβ*, *HuR*, and *SIRT1* regulate each other's signaling pathways.

HuR is well known for its modulation of the stability and translational efficiency of target mRNAs by interacting with AU- or U-rich sequence elements frequently found within 3'-UTRs of many proto-oncogenes (29). Whereas many papers have reported on HuR functions, very few have examined regulation of HuR protein level. HuR protein expression is often increased in cancer, which may be in part due to reduced expression of several miRNAs (miR-16, miR-125, miR-519) known to regulate HuR mRNA (29). Recently Dai *et al.* showed that HuR autoregulates its own expression, through a negative feedback loop (triggered by elevated nuclear HuR level) that affects only nuclear HuR (29). This mechanism would maintain HuR homeostasis when the nucleocytoplasmic HuR distribution is constant, but would allow cytoplasmic HuR to accumulate if the distribution was shifted toward the cytoplasm, which occurs in cancer (29). Because higher MAT β expression raises cytoplasmic HuR content (9), this could help to maintain high HuR expression after RSV treatment.

The sequence of induction-HuR followed by SIRT1 and MAT2B suggests the following scenario. Following RSV treatment, HuR is induced transiently at the mRNA level and is rapidly translated to protein, which helps to raise *MAT2B* and *SIRT1* expression by stabilizing their mRNAs. RSV also activates SIRT1, which can help to raise *MAT2B* expression at the transcriptional level. Higher MAT β expression helps to further

increase cytoplasmic HuR content. These proteins also interact and further stabilize each other. However, RSV treatment reduced the interaction between MAT β and MAT α 2, allowing the steady-state AdoMet level to increase. Thus, although the induction in MAT2B expression may represent a compensatory response to defend against apoptosis and growth suppression, it also allows maximal SIRT1 signaling to occur, and the rise in AdoMet level can also contribute to the apoptosis and growth suppression. This scheme is summarized in Fig. 8.

In summary, while studying the role of RSV in MAT2B biology we have uncovered a highly novel cross-talk among MAT β -HuR-SIRT1. RSV induces the expression of all three proteins by multiple interdependent mechanisms, including enhancing their interaction, which leads to protein stabilization. Our findings also suggest the possibility that MAT β , HuR, and SIRT1 regulate each other's signaling pathways. Although MAT2B dysregulation has only been recognized thus far in cancer biology (4), MAT2B is widely expressed in normal tissues (except adult normal hepatocytes), and these results suggest that it may have much broader functions such as those regulated by SIRT1 and HuR.

REFERENCES

1. Mbimba, T., Awale, P., Bhatia, D., Geldenhuys, W. J., Darvesh, A. S., Carroll, R. T., and Bishayee, A. (2012) Alteration of hepatic proinflammatory cytokines is involved in the resveratrol-mediated chemoprevention of chemically induced hepatocarcinogenesis. *Curr. Pharm. Biotechnol.* **13**, 229–234
2. Howitz, K. T., Bitterman, K. J., Cohen, H. Y., Lamming, D. W., Lavu, S., Wood, J. G., Zipkin, R. E., Chung, P., Kisilewsky, A., Zhang, L. L., Scherer, B., and Sinclair, D. A. (2003) Small molecule activators of sirtuins extend *Saccharomyces cerevisiae* lifespan. *Nature* **425**, 191–196
3. Vetterli, L., and Maechler, P. (2011) Resveratrol-activated SIRT1 in liver and pancreatic β -cells: a Janus head looking to the same direction of metabolic homeostasis. *Aging* **3**, 444–449
4. Lu, S. C., and Mato, J. M. (2012) S-Adenosylmethionine in liver health, injury, and cancer. *Physiol. Rev.* **92**, 1515–1542
5. LeGros, H. L., Jr., Halim, A. B., Geller, A. M., and Kotb, M. (2000) Cloning, expression, and functional characterization of the β regulatory subunit of human methionine adenosyltransferase (MAT II). *J. Biol. Chem.* **275**, 2359–2366
6. Yang, H., Ara, A. I., Magilnick, N., Xia, M., Ramani, K., Chen, H., Lee, T. D., Mato, J. M., and Lu, S. C. (2008) Expression pattern, regulation and function of methionine adenosyltransferase β alternative splicing variants in hepatoma cells. *Gastroenterology* **134**, 281–291
7. Yang, H., Cho, M. E., Li, T. W., Peng, H., Ko, K. S., Mato, J. M., and Lu, S. C. (2013) MiRNAs regulate methionine adenosyltransferase 1A expression in hepatocellular carcinoma. *J. Clin. Invest.* **123**, 285–298
8. Ramani, K., Mato, J. M., and Lu, S. C. (2011) Role of methionine adenosyltransferase genes in hepatocarcinogenesis. *Cancers* **3**, 1480–1497
9. Xia, M., Chen, Y., Wang, L. C., Zandi, E., Yang, H., Bermanian, S., Martínez-Chantar, M. L., Mato, J. M., and Lu, S. C. (2010) Novel function and intracellular localization of methionine adenosyltransferase β splicing variants. *J. Biol. Chem.* **285**, 20015–20021
10. Peng, H., Dara, L., Li, T. W., Zheng, Y., Yang, H., Tomasi, M. L., Tomasi, I., Giordano, P., Mato, J. M., and Lu, S. C. (2013) Methionine adenosyltransferase 2B-GIT1 interplay activates MEK1-ERK1/2 to induce growth in human liver and colon cancer. *Hepatology* **57**, 2299–2313
11. Shafiqat, N., Muniz, J. R., Pilka, E. S., Papagrigoriou, E., von Delft, F., Oppermann, U., and Yue, W. W. (2013) Insight into S-adenosylmethionine biosynthesis from the crystal structures of the human methionine adenosyltransferase catalytic and regulatory subunits. *Biochem. J.* **452**, 27–36
12. Yang, H., Ramani, K., Xia, M., Ko, K. S., Li, T. W., Oh, P., Li, J., and Lu, S. C.

- (2009) Dysregulation of glutathione synthesis during cholestasis in mice: molecular mechanisms and therapeutic implications. *Hepatology* **49**, 1982–1991
13. Antic, D., and Keene, J. D. (1997) Embryonic lethal abnormal visual RNA-binding proteins involved in growth, differentiation, and posttranscriptional gene expression. *Am. J. Hum. Genet.* **61**, 273–278
14. Fan, J., Ishmael, F. T., Fang, X., Myers, A., Cheadle, C., Huang, S. K., Atasoy, U., Gorospe, M., and Stellato, C. (2011) Chemokine transcripts as targets of the RNA-binding protein HuR in human airway epithelium. *J. Immunol.* **186**, 2482–2494
15. Lu, S. C., Ramani, K., Ou, X., Lin, M., Yu, V., Ko, K., Park, R., Bottiglieri, T., Tsukamoto, H., Kanel, G., French, S. W., Mato, J. M., Moats, R., and Grant, E. (2009) S-Adenosylmethionine in the chemoprevention and treatment of hepatocellular carcinoma in a rat model. *Hepatology* **50**, 462–471
16. Borra M. T., Smith, B. C., and Denu, J. M. (2005) Mechanism of human SIRT1 activation by resveratrol. *J. Biol. Chem.* **280**, 17187–17195
17. Costa Cdos, S., Rohden, F., Hammes, T. O., Margis, R., Bortolotto, J. W., Padoin, A. V., Mottin, C. C., and Guaragna, R. M. (2011) Resveratrol up-regulated SIRT1, FOXO1, and adiponectin and down-regulated PPAR γ 1–3 mRNA expression in human visceral adipocytes. *Obes. Surg.* **21**, 356–361
18. Hubbard, B. P., Gomes, A. P., Dai, H., Li, J., Case, A. W., Considine, T., Riera, T. V., Lee, J. E., E., S. Y., Lamming, D. W., Pentelute, B. L., Schuman, E. R., Stevens, L. A., Ling, A. J., Armour, S. M., Michan, S., Zhao, H., Jiang, Y., Sweitzer, S. M., Blum, C. A., Disch, J. S., Ng, P. Y., Howitz, K. T., Rolo, A. P., Hamuro, Y., Moss, J., Perni, R. B., Ellis, J. L., Vlasuk, G. P., and Sinclair, D. A. (2013) Evidence for a common mechanism of SIRT1 regulation by allosteric activators. *Science* **339**, 1216–1219
19. Nordgren, K. K., Peng, Y., Pelleymounter, L. L., Moon, I., Abo, R., Feng, Q., Eckloff, B., Yee, V. C., Wieben, E., and Weinshilboum, R. M. (2011) Methionine adenosyltransferase 2A/2B and methylation: gene sequence variation and functional genomics. *Drug Metab. Dispos.* **39**, 2135–2147
20. Nakata, R., Takahashi, S., and Inoue, H. (2012) Recent advances in the study on resveratrol. *Biol. Pharm. Bull.* **35**, 273–279
21. Bishayee, A., Politis, T., and Darvesh, A. S. (2010) Resveratrol in the chemoprevention and treatment of hepatocellular carcinoma. *Cancer Treat. Rev.* **36**, 43–53
22. Yeh, C. B., Hsieh, M. J., Lin, C. W., Chiou, H. L., Lin, P. Y., Chen, T. Y., and Yang, S. F. (2013) The antimetastatic effects of resveratrol on hepatocellular carcinoma through the down-regulation of a metastasis-associated protease by SP-1 modulation. *PLoS ONE* **8**, e56661
23. Knight, J. R., and Milner, J. (2012) SIRT1, metabolism and cancer. *Curr. Opin. Oncol.* **24**, 68–75
24. Abdelmohsen, K., Pullmann, R., Jr., Lal, A., Kim, H. H., Galban, S., Yang, X., Blethrow, J. D., Walker, M., Shubert, J., Gillespie, D. A., Furneaux, H., and Gorospe, M. (2007) Phosphorylation of HuR by Chk2 regulates SIRT1 expression. *Mol. Cell* **25**, 543–557
25. Li, J., Ramani, K., Sun, Z., Zee, C., Grant, E. G., Yang, H., Xia, M., Oh, P., Ko, K., Mato, J. M., and Lu, S. C. (2010) Forced expression of methionine adenosyltransferase 1A in human hepatoma cells suppresses *in vivo* tumorigenesis in mice. *Am. J. Pathol.* **176**, 2456–2466
26. Portmann, S., Fahrner, R., Lechleiter, A., Keogh, A., Overney, S., Laemmle, A., Mikami, K., Montani, M., Tschan, M. P., Candinas, D., and Stroka, D. (2013) Antitumor effect of SIRT1 inhibition in human HCC tumor models *in vitro* and *in vivo*. *Mol. Cancer Ther.* **12**, 499–508
27. Herranz, D., Muñoz-Martin, M., Cañamero, M., Mulero, F., Martínez-Pastor, B., Fernandez-Capetillo, O., and Serrano, M. (2010) Sirt1 improves healthy ageing and protects from metabolic syndrome-associated cancer. *Nat. Commun.* **1**, 3
28. Chen, H. C., Jeng, Y. M., Yuan, R. H., Hsu, H. C., and Chen, Y. L. (2012) SIRT1 promotes tumorigenesis and resistance to chemotherapy in hepatocellular carcinoma and its expression predicts poor prognosis. *Ann. Surg. Oncol.* **19**, 2011–2019
29. Dai, W., Zhang, G., and Makeyev, E. V. (2012) RNA-binding protein HuR autoregulates its expression by promoting alternative polyadenylation site usage. *Nucleic Acids Res.* **40**, 787–800