

# Differential Regulation of Cysteinyl Leukotriene Receptor Signaling by Protein Kinase C in Human Mast Cells

Vinay Kondeti<sup>1</sup>, Ernest Duah<sup>1</sup>, Nosayba Al-Azzam<sup>1</sup>, Charles K. Thodeti<sup>2</sup>, Joshua A. Boyce<sup>3,4,5</sup>, Sailaja Paruchuri<sup>1\*</sup>

**1** Department of Chemistry, University of Akron, Akron, Ohio, United States of America, **2** Department of Integrative Medical Sciences, Northeast Ohio Medical University, Rootstown, Ohio, United States of America, **3** Department of Medicine, Harvard Medical School, Boston, Massachusetts, United States of America, **4** Department of Pediatrics, Harvard Medical School, Boston, Massachusetts, United States of America, **5** Division of Rheumatology, Immunology and Allergy, Jeff and Penny Vinik Center for Allergic Disease Research, Brigham and Women's Hospital, Boston, Massachusetts, United States of America

## Abstract

Cysteinyl leukotrienes (cys-LTs) are a group of lipid mediators that are potent bronchoconstrictors, powerful inducers of vascular leakage and potentiators of airway hyperresponsiveness. Cys-LTs play an essential role in asthma and are synthesized as well as activated in mast cells (MCs). Cys-LTs relay their effects mainly through two known GPCRs, CysLT<sub>1</sub>R and CysLT<sub>2</sub>R. Although protein kinase C (PKC) isoforms are implicated in the regulation of CysLT<sub>1</sub>R function, neither the role of PKCs in cys-LT-dependent MC inflammatory signaling nor the involvement of specific isoforms in MC function are known. Here, we show that PKC inhibition augmented LTD<sub>4</sub> and LTE<sub>4</sub>-induced calcium influx through CysLT<sub>1</sub>R in MCs. In contrast, inhibition of PKCs suppressed *c-fos* expression as well MIP1 $\beta$  generation by cys-LTs. Interestingly, cys-LTs activated both PKC $\alpha$  and PKC $\epsilon$  isoforms in MC. However, knockdown of PKC $\alpha$  augmented cys-LT mediated calcium flux, while knockdown of PKC $\epsilon$  attenuated cys-LT induced *c-fos* expression and MIP1 $\beta$  generation. Taken together, these results demonstrate for the first time that cys-LT signaling downstream of CysLT<sub>1</sub>R in MCs is differentially regulated by two distinct PKCs which modulate inflammatory signals that have significant pathobiologic implications in allergic reactions and asthma pathology.

**Citation:** Kondeti V, Duah E, Al-Azzam N, Thodeti CK, Boyce JA, et al. (2013) Differential Regulation of Cysteinyl Leukotriene Receptor Signaling by Protein Kinase C in Human Mast Cells. PLoS ONE 8(8): e71536. doi:10.1371/journal.pone.0071536

**Editor:** Patricia T. Bozza, Fundação Oswaldo Cruz, Brazil

**Received:** April 15, 2013; **Accepted:** June 28, 2013; **Published:** August 15, 2013

**Copyright:** © 2013 Kondeti et al. This is an open-access article distributed under the terms of the Creative Commons Attribution License, which permits unrestricted use, distribution, and reproduction in any medium, provided the original author and source are credited.

**Funding:** Supported by National Institutes of Health Grants HL098953 and AI-52353, and by James Foght Assistant Professor support. The funders had no role in study design, data collection and analysis, decision to publish, or preparation of the manuscript.

**Competing Interests:** The authors have declared that no competing interests exist.

\* E-mail: sp97@uakron.edu

## Introduction

Cysteinyl leukotrienes (cys-LTs), comprising LTC<sub>4</sub>, LTD<sub>4</sub> and LTE<sub>4</sub>, are potent bronchoconstrictors and mediators of pulmonary inflammation [1,2]. They are derivatives of arachidonic acid generated by mast cells (MCs), eosinophils, basophils, macrophages, and myeloid dendritic cells [3]. LTC<sub>4</sub> and LTD<sub>4</sub> are very short-lived in vivo while LTE<sub>4</sub> is stable, being the only cys-LT detected in biologic fluids and excreted in the urine [4]. Cys-LTs potentiate airway hyperresponsiveness (AHR) to histamine when administered by inhalation to human subjects [5]. Bronchoalveolar lavage (BAL) fluids collected from allergic human subjects after endobronchial challenge with allergen contain high levels of cys-LTs [6], pointing the role of cys-LTs in allergic inflammation. This role is confirmed by the fact that inhibitors of the type 1 G protein-coupled receptor (GPCR) for cys-LTs (CysLT<sub>1</sub>R) [7,8] and inhibitors of cys-LT synthesis [9] are clinically efficacious for the treatment of asthma. Cys-LTs are also implicated in adaptive immunity and fibrosis [10,11,12]. Most of these cys-LT-mediated effects are thought to be induced through CysLT<sub>1</sub>R and a second GPCR, CysLT<sub>2</sub>R [13,14], although the existence of additional receptors is likely based on findings in mice lacking both receptors [15,16,17]. Identification of signaling partners and mechanisms involved in the regulation of these receptors is crucial to gain insight into allergic inflammation.

MCs are stem cell factor (SCF)-dependent hematopoietic cells that are ubiquitously distributed throughout the body [18,19] and initiate inflammatory responses to allergens and infectious agents. They play an important role in triggering exacerbations of asthma through the elaboration of several soluble inflammatory mediators including cys-LTs, histamine, serine proteases, multiple cytokines and chemokines. MCs not only generate cys-LTs, but also express both CysLT<sub>1</sub>R and CysLT<sub>2</sub>R [20,21] and respond to LTC<sub>4</sub>, LTD<sub>4</sub>, and LTE<sub>4</sub> with a range of functions. We have demonstrated earlier that stimulation of human cord blood-derived MCs (hMCs) and/or LAD2 cells with LTD<sub>4</sub> potently induces calcium flux [21,22] and cytokine generation [22,23], each of which requires CysLT<sub>1</sub>R based on pharmacologic antagonism by MK571. hMCs also proliferate in response to LTD<sub>4</sub>, reflecting transactivation of *c-kit* by CysLT<sub>1</sub>R [24]. The relevance of cys-LTs to MC function is suggested by the observation that mice lacking the requisite terminal enzyme needed for cys-LT generation, leukotriene C<sub>4</sub> synthase, show markedly reduced numbers of MCs in the airway mucosa following sensitization and challenge to allergen [12]. However, aside from the ability of LTD<sub>4</sub> to transactivate *c-kit* [24] and for LTE<sub>4</sub> to activate PPAR $\gamma$  [22] and induce the formation of large amounts of cytokines by a pathway involving the P2Y<sub>12</sub> receptor [17], little is understood concerning the signaling mechanisms by which cysteinyl leukotriene receptors modulate the function of MCs.

Protein kinase C (PKC) refers to a family of phospholipid-dependent serine/threonine protein kinases that are activated by a number of extracellular stimuli including growth factors, adhesion, cytokines and GPCRs [25]. PKCs are involved in signal transduction associated with cell proliferation, differentiation, and apoptosis. At least eleven closely related PKC isozymes have been reported that differ in their structure, biochemical properties, tissue distribution, subcellular localization, and substrate specificity. They are classified as classical ( $\alpha$ ,  $\beta$ 1,  $\beta$ 2,  $\gamma$ ), novel ( $\delta$ ,  $\epsilon$ ,  $\eta$ ,  $\theta$ ,  $\mu$ ), and atypical ( $\xi$ ,  $\lambda$ ) isozymes depending on their requirement for the cofactors calcium, diacylglycerol (DAG) and phosphatidylserine (PS) [26,27,28]. PKCs are implicated in the negative regulation of LTD<sub>4</sub>-induced calcium signaling [29,30]. Global pharmacological inhibition of PKCs was shown to inhibit LTD<sub>4</sub>-mediated CysLT<sub>1</sub>R internalization and desensitization resulting in enhanced phosphoinositide production and calcium flux [31]. This CysLT<sub>1</sub>R desensitization is shown to occur mainly through the phosphorylation of three serine residues (313–316) in the tail region of CysLT<sub>1</sub>R by PKC $\alpha$  [31]. In contrast, Thodeti et al., demonstrated that PKC $\epsilon$  regulates LTD<sub>4</sub>-induced Ca<sup>2+</sup> signal in intestinal epithelial cells [32]. Overall, it is not clear what specific isoforms are activated by cys-LTs in MCs or how they are involved in regulation of the LTD<sub>4</sub>-induced Ca<sup>2+</sup> signal as well MC activation. In the present study, we investigated the specific PKC isoforms activated in MCs by cys-LTs and the role of each isoform in regulating cys-LT-induced MC responses. We show that both LTD<sub>4</sub> and LTE<sub>4</sub> activate PKC $\alpha$  and PKC $\epsilon$  isoforms and that these isoforms regulate different signals down-stream of CysLT<sub>1</sub>R. Specifically, PKC $\alpha$  negatively regulates cys-LT-induced calcium flux, while PKC $\epsilon$  positively regulates CysLT<sub>1</sub>R-mediated c-fos expression and MIP1 $\beta$  generation.

## Materials and Methods

### Reagents

LTD<sub>4</sub>, LTE<sub>4</sub> and MK571 were purchased from Cayman Chemical. Fura-2 AM was from Molecular Probes, All phospho-specific antibodies were from Cell Signaling Technology, Total PKC antibodies were from Santa Cruz Biotechnology. Isoform specific siRNAs for PKCs were obtained from Dharmacon and MIP1 $\beta$  Elisa kit was from Endogen.

### Cell Culture

The LAD2 MC leukemia line [33] was a kind gift from Dr. Arnold Kirshenbaum, NIH. These cells were cultured in stempro-34 (Invitrogen) supplemented with 2 mM L-Glutamine (Invitrogen), Pen-strep (100 IU/ml) (Invitrogen) and SCF (endogen) (100 ng/ml). Cell culture medium was hemidepleted every week with fresh medium and 100 ng/ml SCF. Primary hMCs were derived from cord blood mononuclear cells cultured for 6–9 weeks in RPMI supplemented with SCF, interleukin IL-6, and IL-10 [34].

### Calcium Flux

LAD2 cells or hMCs (0.5–1  $\times$  10<sup>6</sup>/sample) were washed and labeled with fura 2-AM for 30 minutes at 37°C. Cells were stimulated with the indicated concentrations of LTD<sub>4</sub> and LTE<sub>4</sub> and the changes in intracellular calcium were measured using excitation at 340 and 380 nm in a fluorescence spectrophotometer (Hitachi F-4500) as described earlier [22]. The relative ratios of fluorescence emitted at 510 nm were recorded and displayed as a reflection of intracellular calcium concentration. In some experiments, cells were pre-incubated with the PKC inhibitor GF109203X (GFX; 2  $\mu$ M) for 30 minutes or with CysLT<sub>1</sub>R

antagonist MK571 (1  $\mu$ M) for 15 minutes before the stimulation with cys-LTs (500 nM).

### Cell Activation

LAD2 cells were either stimulated with 500 nM of LTD<sub>4</sub> or LTE<sub>4</sub> (unless specified otherwise), pre-treated with GFX (2  $\mu$ M) for 30 minutes or MK571 (1  $\mu$ M) and stimulated for 15 minutes for the phosphorylation of Erk and CREB or 1 h for the expression of c-fos or 6 h for the measurement of cytokines. The concentration of MIP1 $\beta$  (Endogen) was measured with ELISAs according to the manufacturer's protocol [22]. Transfection of isoform specific siRNA smart pool constructs from Dharmacon (10 nM) were carried out using Silentfect transfection reagent (Biorad) for 48 h according to the manufacturer's protocol.

### Cell Lysates and Western Blotting

After stimulation with the respective agonists, LAD2 cells (0.5  $\times$  10<sup>6</sup>) were lysed with lysis buffer (BD Bioscience) supplemented with protease inhibitor cocktail (Roche) and phosphatase inhibitor cocktail (Pierce). Immunoblotting was performed as described previously [35]. Briefly, lysates were subjected to 4–12% SDS-PAGE and transferred to PVDF membrane. Membranes were incubated with respective primary Phospho- and total antibodies diluted in 1x TBS, 5% dry milk, 0.1% Tween-20 (1:1000) overnight at 4°C on shaker, and then with secondary antibody (peroxidase-conjugated anti-rabbit or anti-mouse). Western blot was incubated with ECL and the bands were visualized using imager (Protein Simple) and quantified using Image J (NIH).

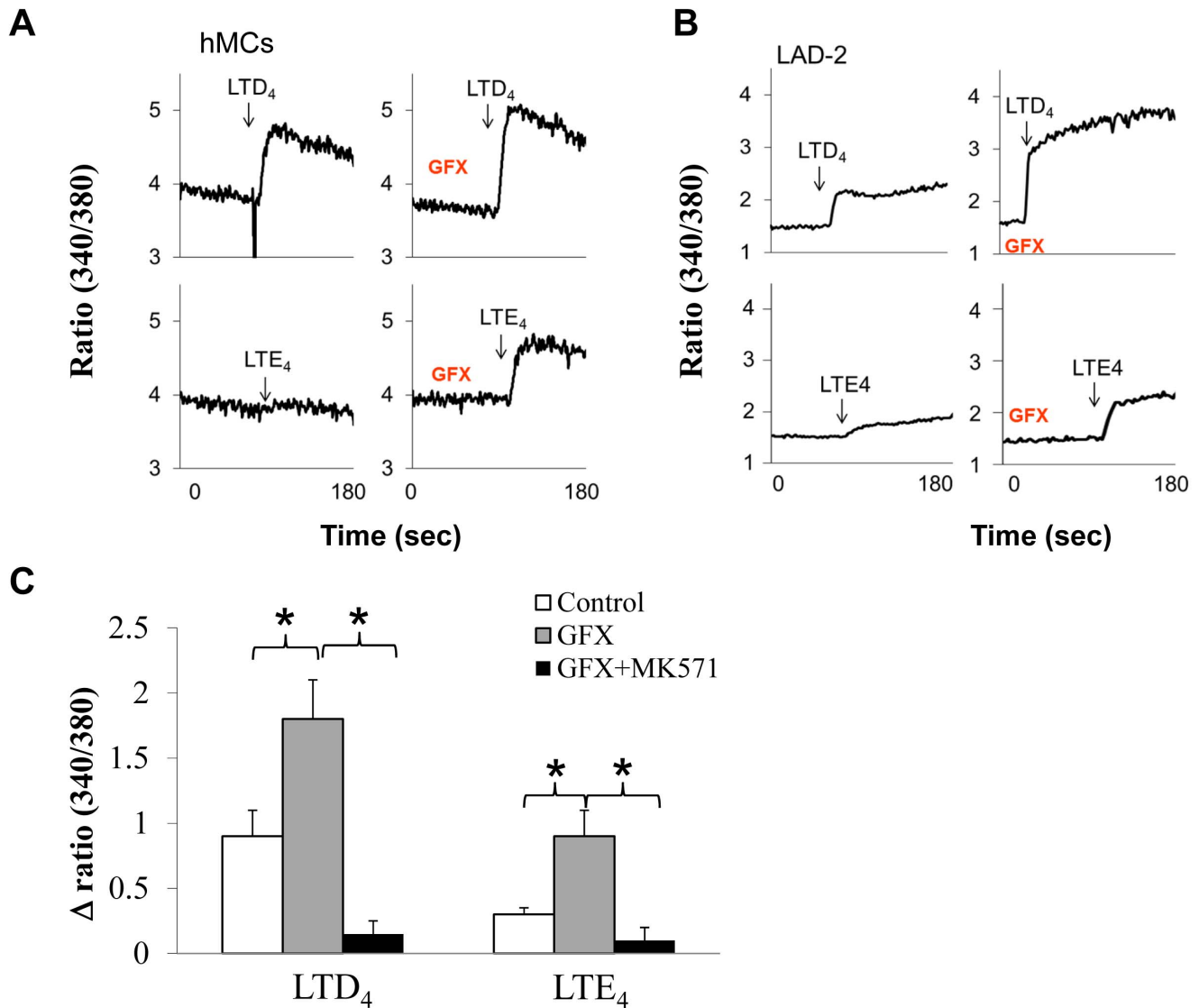
### Statistics

Data are expressed as mean  $\pm$  SD from at least three experiments except where otherwise indicated. Data were converted to a percentage of control for each experiment where indicated. Significance was determined using Student's *t* test as well as one-way ANOVA followed by Tukey post-hoc analysis.

## Results

### Cys-LT-mediated Calcium Flux in Mast Cells is Negatively Regulated by PKC

We have reported earlier that cys-LTs, especially LTD<sub>4</sub>, potently induces calcium flux in primary hMCs [21] and also in LAD2 cells [22]. This signal was sensitive to inhibition by MK571, implying a requirement for CysLT<sub>1</sub>R or a CysLT<sub>1</sub>R-like GPCR in this signaling event. CysLT<sub>1</sub>R undergoes ligand-induced desensitization and internalization in heterologous cell systems and these processes are uniquely dependent on PKC [31]. Based on these observations, we sought to determine if PKCs have a role in controlling cys-LT-dependent calcium flux in MCs. Both hMCs and LAD2 cells were pre-treated with GF109203X (GFX), a global PKC inhibitor, and its effect on LTD<sub>4</sub> or LTE<sub>4</sub> stimulation was evaluated. In the absence of GFX, LTD<sub>4</sub> (500 nM) potently stimulated calcium flux in both cell types, but LTE<sub>4</sub> (500 nM) only caused minimal calcium flux. However, GFX treatment markedly potentiated LTD<sub>4</sub> and LTE<sub>4</sub>-mediated calcium fluxes in both cell types (Fig. 1 A, B). Importantly, a specific antagonist of CysLT<sub>1</sub>R, MK-571, completely abolished both LTD<sub>4</sub> and LTE<sub>4</sub>-mediated calcium fluxes in the presence of GFX (Fig. 1C). These observations suggest that the strength of calcium signaling through CysLT<sub>1</sub>R is negatively regulated by PKCs, probably through the desensitization of the receptors [31,36].

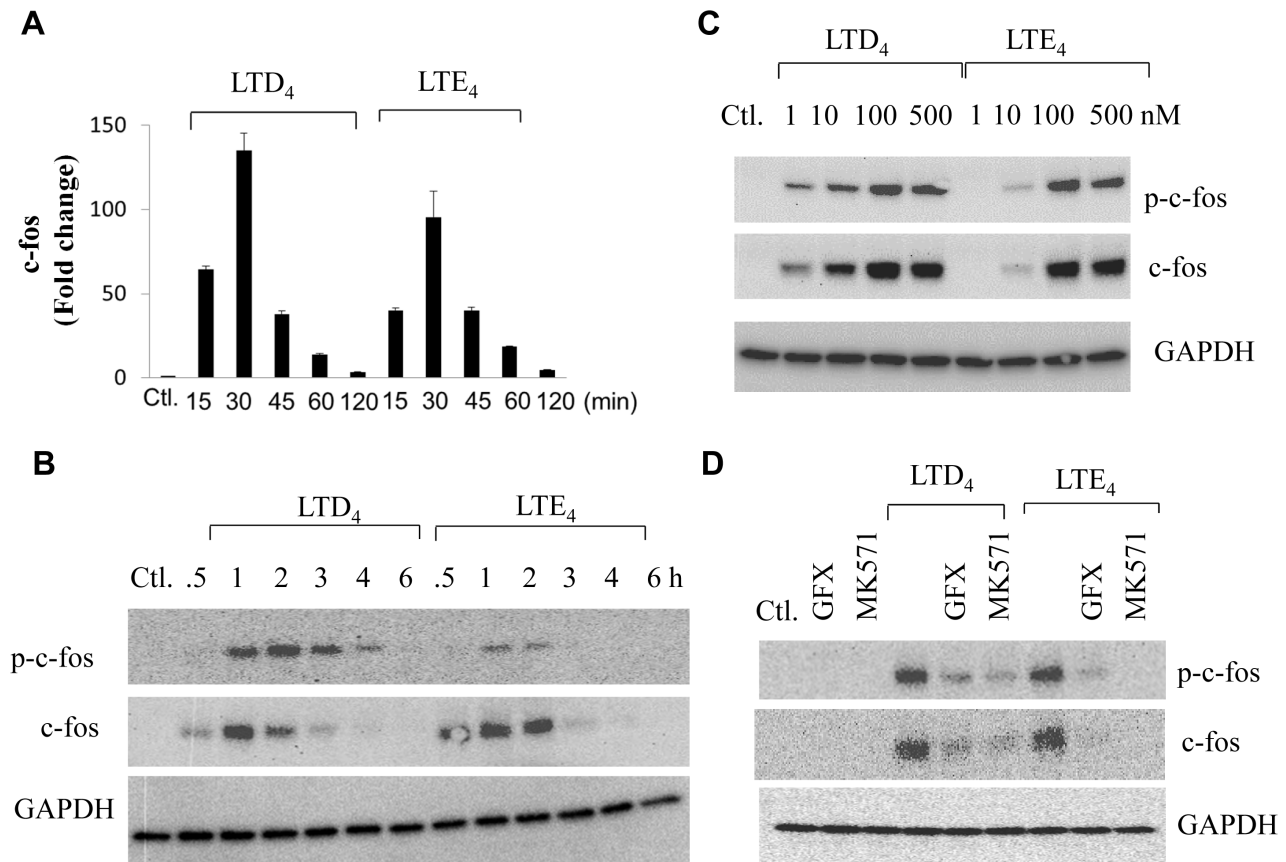


**Figure 1. Effect of PKC inhibition on calcium signaling by LTD<sub>4</sub> and LTE<sub>4</sub> in LAD2 cells.** Calcium transients from hMC (A) and LAD2 cells (B) with cys-LTs (500 nM) in presence or absence of PKC inhibitor, GFX (2 μM) (C) Quantitative analysis of calcium influx from A and B and the effect of MK571 (1 μM) on the enhanced calcium flux with GFX pre-treatment. The data shown are ±SD of three experiments. The significance was tested using Student's t-test as well as one-way ANOVA followed by Tukey post-hoc analysis. P<0.05. NS = non-significant. doi:10.1371/journal.pone.0071536.g001

### PKCs are Required for cys-LT-mediated Phosphorylation and Expression of c-fos

In rat basophilic leukemia (RBL) cells, Ng et al., demonstrated that disrupting CysLT<sub>1</sub>R desensitization by PKC inhibitors can lead to enhanced LTC<sub>4</sub>-induced calcium influx, but prevents up-regulation of c-fos expression through the CRAC channels. Along these lines, we first checked if stimulation of MCs with LTD<sub>4</sub> and LTE<sub>4</sub> induced c-fos expression (Fig. 2). We found that both LTD<sub>4</sub> and LTE<sub>4</sub> induced robust activation of c-fos at the transcript level as well as at the protein level. Surprisingly, the induction of c-fos transcript was maximum at 30 minutes, while the protein induction was as early as 30 minutes with peak expression at 1 h and then slowly began to decline after stimulation with either LTD<sub>4</sub> or LTE<sub>4</sub> (Fig. 2A, B). To determine the potency of cys-LTs to induce the expression of c-fos, we treated LAD2 cells with various concentrations of LTD<sub>4</sub> and LTE<sub>4</sub> and analyzed phosphorylation and induction of c-fos (Fig. 2C). LTD<sub>4</sub> caused

c-fos induction at doses as low as 1 nM while LTE<sub>4</sub> evoked similar response at relatively higher concentrations (100 nM and 500 nM). On average, we found that 500 nM concentration of cys-LTs evoked the best response of all the experiments performed and hence we stimulated cells with 500 nM of cys-LTs in all the concurrent experiments. Also, we observed that the pattern of phosphorylation as well as expression of c-fos were similar with both LTD<sub>4</sub> and LTE<sub>4</sub>, suggesting that cys-LTs not only induced the expression of c-fos but also activated c-fos. We then asked if cys-LT-induced c-fos expression and activation are sensitive to PKC inhibition and are mediated through cysLT<sub>1</sub>R. Both LTD<sub>4</sub> and LTE<sub>4</sub>-induced c-fos activation as well as expression was inhibited by GFX as well as MK571 (Fig. 2D). These results suggest that though PKCs negatively regulate cys-LT-mediated calcium flux, but are required for cys-LT-mediated c-fos phosphorylation/expression.



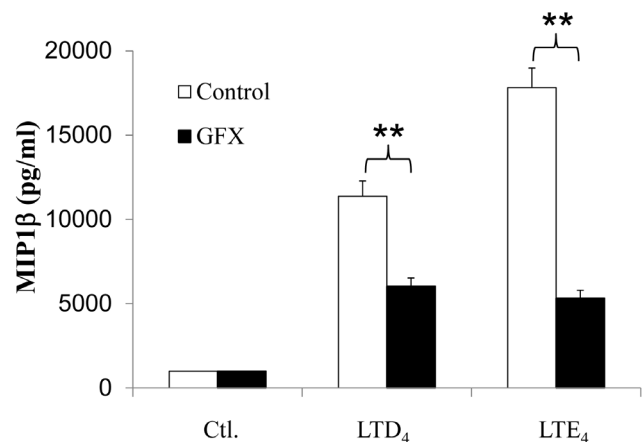
**Figure 2. LTD<sub>4</sub> and LTE<sub>4</sub>-induced phosphorylation and expression of c-fos in LAD2 cells and the effect of PKC inhibition.** Relative levels of c-fos transcript (A) upon treatment with 500 nM of LTD<sub>4</sub> and LTE<sub>4</sub>, c-fos phosphorylation and expression with LTD<sub>4</sub> or LTE<sub>4</sub> (500 nM) for indicated period (B), Dose response (C), Pre-treated with GFX (2 μM) or MK571 (1 μM) (D), stimulated with 500 nM of cys-LTs and analyzed by western blotting. Blots were stripped and blotted for GAPDH. The data shown are representative of three separate experiments. doi:10.1371/journal.pone.0071536.g002

### MIP1β Generation by cys-LTs is Positively Regulated by PKCs

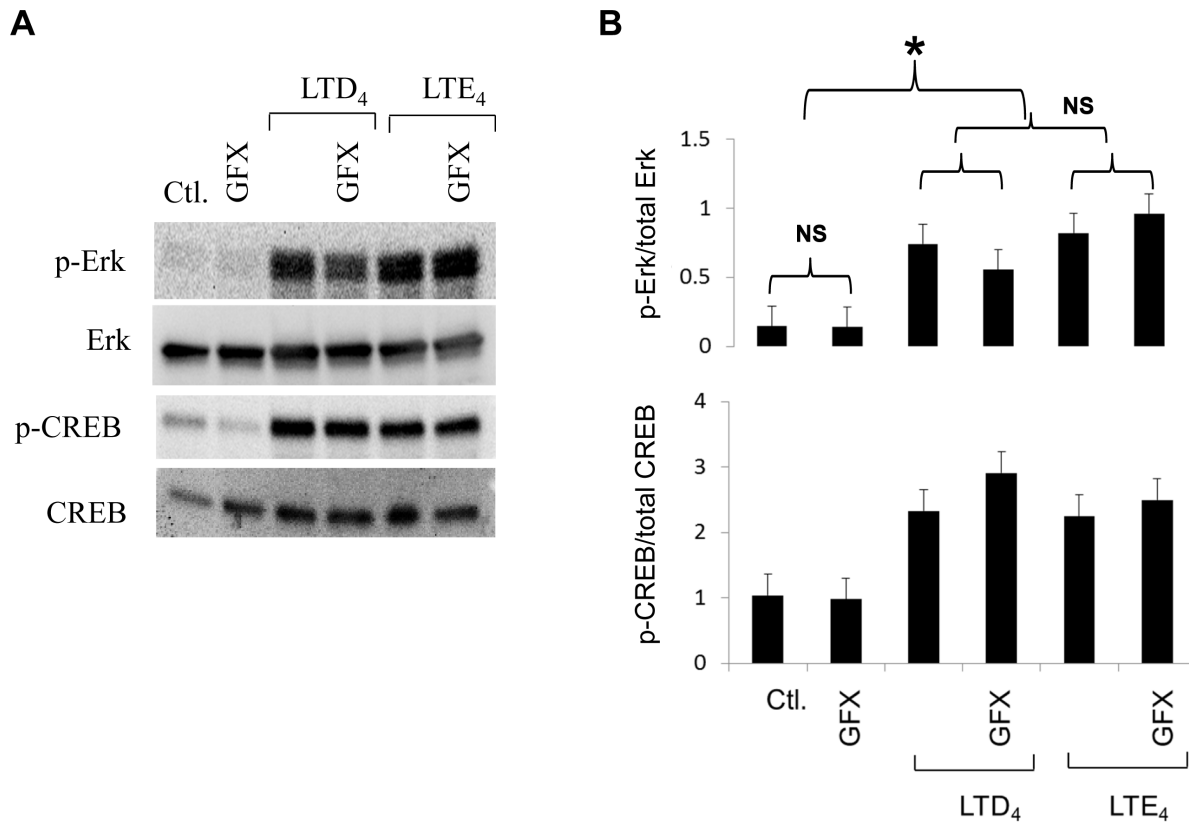
Next, we investigated the effect of PKC inhibition on other cys-LT-induced MC functions. We have shown earlier that cys-LTs are capable of potently activating inflammatory chemokine, MIP1β in MCs [22]. Hence, we asked if PKCs play a role in cys-LT-induced inflammatory responses such as MIP1β production in MCs. To determine this, LAD2 cells were pre-treated with GFX with or without cys-LT stimulation and MIP1β was measured in the supernatants. As reported earlier [22] and shown in Fig. 3, both LTD<sub>4</sub> and LTE<sub>4</sub> potently induced MIP1β generation. Importantly, unlike calcium flux, MIP1β induction by both the agonists was significantly blocked by PKC inhibition with GFX (Fig. 3). These findings suggest the PKCs differentially regulate cys-LT-induced calcium influx and gene expression in MCs, possibly via activation of distinct isoforms of PKCs.

### PKCs do not Effect cys-LT-activated ERK, or CREB Pathways

We have shown earlier that cys-LTs activate ERK and CREB [22] and we sought to investigate if all cys-LT-induced effects are mediated through PKCs. To our surprise, PKC inhibition by GFX had no significant effect on the phosphorylation or the expression of ERK and CREB by cys-LTs (Fig. 4). These results suggest that cys-LTs have potential to modulate MC function, both dependent as well as independent of PKCs.



**Figure 3. Involvement of PKC in LTD<sub>4</sub> and LTE<sub>4</sub>-induced MIP1β secretion in LAD2 cells.** LAD2 cells were stimulated with 500 nM of LTD<sub>4</sub> or LTE<sub>4</sub> for 6 h in presence or absence of GFX (2 μM). The generation of MIP1β was analyzed from the culture supernatant using MIP1β-specific ELISA. Data shown are ±SD of three independent experiments. \*\* P<0.001. NS = non-significant. doi:10.1371/journal.pone.0071536.g003



**Figure 4. Phosphorylation of Erk and CREB by LAD2 cells in response to LTD<sub>4</sub> and LTE<sub>4</sub> and the role of PKC in mediating these effects.** (A) phosphorylation as well as total expression of Erk and CREB proteins by Western blotting in cell lysates of LAD2 cells pre-treated with GFX (2  $\mu$ M) and stimulated with 500 nM of LTD<sub>4</sub> and LTE<sub>4</sub> respectively for 30 minutes (B) Quantitative analysis. The shown data represents  $\pm$ SD of three separate experiments. \*P<0.05. NS = non-significant. doi:10.1371/journal.pone.0071536.g004

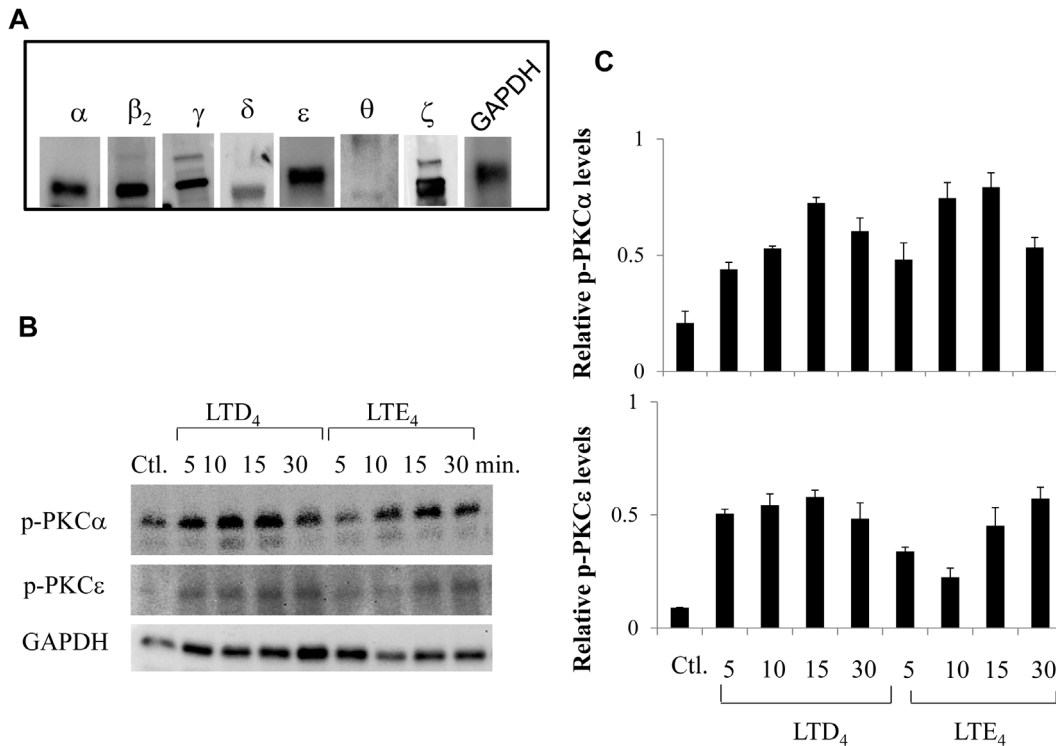
#### PKC Profile in MCs and Identification of cys-LT-responsive PKC Isoforms

To determine which of the PKC isoforms mediate cys-LT signaling responses, we first characterized the expression of different isoforms of PKCs in MCs including classical PKCs ( $\alpha$ ,  $\beta$ I,  $\beta$ II,  $\gamma$ ), novel PKCs ( $\delta$ ,  $\epsilon$ ,  $\eta$ ,  $\theta$ ), and atypical PKCs ( $\zeta$ ,  $\iota/\lambda$ ,  $\mu$ ) by Western blotting. We found that MCs express PKC  $\alpha$ ,  $\beta$ II,  $\gamma$ ,  $\delta$ ,  $\epsilon$ ,  $\theta$  and  $\zeta$  isoforms (Fig. 5A) and not  $\beta$ I,  $\eta$ ,  $\iota/\lambda$ ,  $\mu$  (data not shown). We next asked which of the expressed PKC isoforms are activated by cys-LTs. Cys-LT responsive PKC isoforms were determined by analyzing the phosphorylation of individual PKC isoforms in response to cys-LTs using phospho-specific antibodies. We found that PKC $\alpha$  and PKC $\epsilon$  are phosphorylated by both LTD<sub>4</sub> and LTE<sub>4</sub> in a time dependent manner (Fig. 5B, C), but not PKC  $\beta$ II,  $\gamma$ ,  $\delta$ ,  $\theta$  and  $\zeta$  isoforms (data not shown). Phosphorylation of both PKC $\alpha$  and PKC $\epsilon$  in response to cys-LTs was rapid and transient reaching a peak at 15 minutes and started to decline after 30 minutes. The peak LTE<sub>4</sub>-induced phosphorylation of PKC $\epsilon$ , but not of PKC $\alpha$  was more gradual than that induced by LTD<sub>4</sub>. The small inhibition in the phosphorylation of PKC $\epsilon$  that we observed at 10 minutes compared to 5 minutes in response to LTE<sub>4</sub> is not statistically significant.

#### PKC $\alpha$ Negatively Regulates cys-LT Mediated Calcium Flux While PKC $\epsilon$ is Essential for MIP1 $\beta$ Generation by cys-LTs

After determining that LTD<sub>4</sub> and LTE<sub>4</sub> both activated PKC $\alpha$  and PKC $\epsilon$  in MCs, we investigated the specific roles of PKC $\alpha$  and

PKC $\epsilon$  in cys-LT-mediated calcium flux, c-fos expression and MIP1 $\beta$  production (Fig. 6). To determine this, we first knocked down PKC $\alpha$  and PKC $\epsilon$  isoforms in LAD2 cells by transfecting isoform specific siRNAs (10 nM) against PKC $\alpha$  and PKC $\epsilon$ . As a control, we transfected cells with a non-specific siRNA pool. Transfection of MCs with PKC $\alpha$  and PKC $\epsilon$  siRNAs significantly down regulated PKC $\alpha$  and PKC $\epsilon$  expression ( $40.0 \pm 4.3\%$  and  $41.5 \pm 9.2\%$  down regulation), respectively (Fig. 6A). Down regulation of PKC $\alpha$  with PKC $\alpha$  siRNA did not have any significant effect on the expression of PKC $\epsilon$  and vice versa (data not shown). We then assessed cys-LT mediated calcium influx, c-fos phosphorylation, expression and MIP1 $\beta$  generation in these cells. Calcium measurements revealed that knock down of PKC $\alpha$  induced a significant two fold increase in LTD<sub>4</sub>-induced peak calcium influx in MCs (Fig. 6B, C). We did not detect any change in calcium flux induced by LTD<sub>4</sub> in PKC $\epsilon$  knocked-down MCs suggesting that PKC $\alpha$  is the key isoform involved in the negative regulation of cys-LT induced calcium flux. On the other hand, knockdown of PKC $\epsilon$  attenuated both LTD<sub>4</sub> and LTE<sub>4</sub>-induced c-fos expression (Fig. 6D, E) and phosphorylation (data not shown). Knock down of PKC $\epsilon$  also attenuated cys-LT-induced MIP1 $\beta$  production in MCs (53% and 55% respectively) (Fig. 6F). Transfection with control siRNAs did not affect LTD<sub>4</sub> and LTE<sub>4</sub>-induced c-fos expression or MIP1 $\beta$  generation. Although PKC $\alpha$  knock down marginally inhibited MIP1 $\beta$  generation, this signal is not significantly different from control siRNA.



**Figure 5. Identification of possible PKC isoform(s) activated by LTD<sub>4</sub> and LTE<sub>4</sub> in LAD2 cells.** (A) Expression of PKC isoforms and GAPDH (B) phosphorylation of PKC $\alpha$  and PKC $\epsilon$  stimulated with 500 nM of LTD<sub>4</sub> or LTE<sub>4</sub> for the indicated times (C) Quantitative analysis of relative phospho-PKC levels in LAD2 cells. Data shown are  $\pm$ SD of three separate experiments. doi:10.1371/journal.pone.0071536.g005

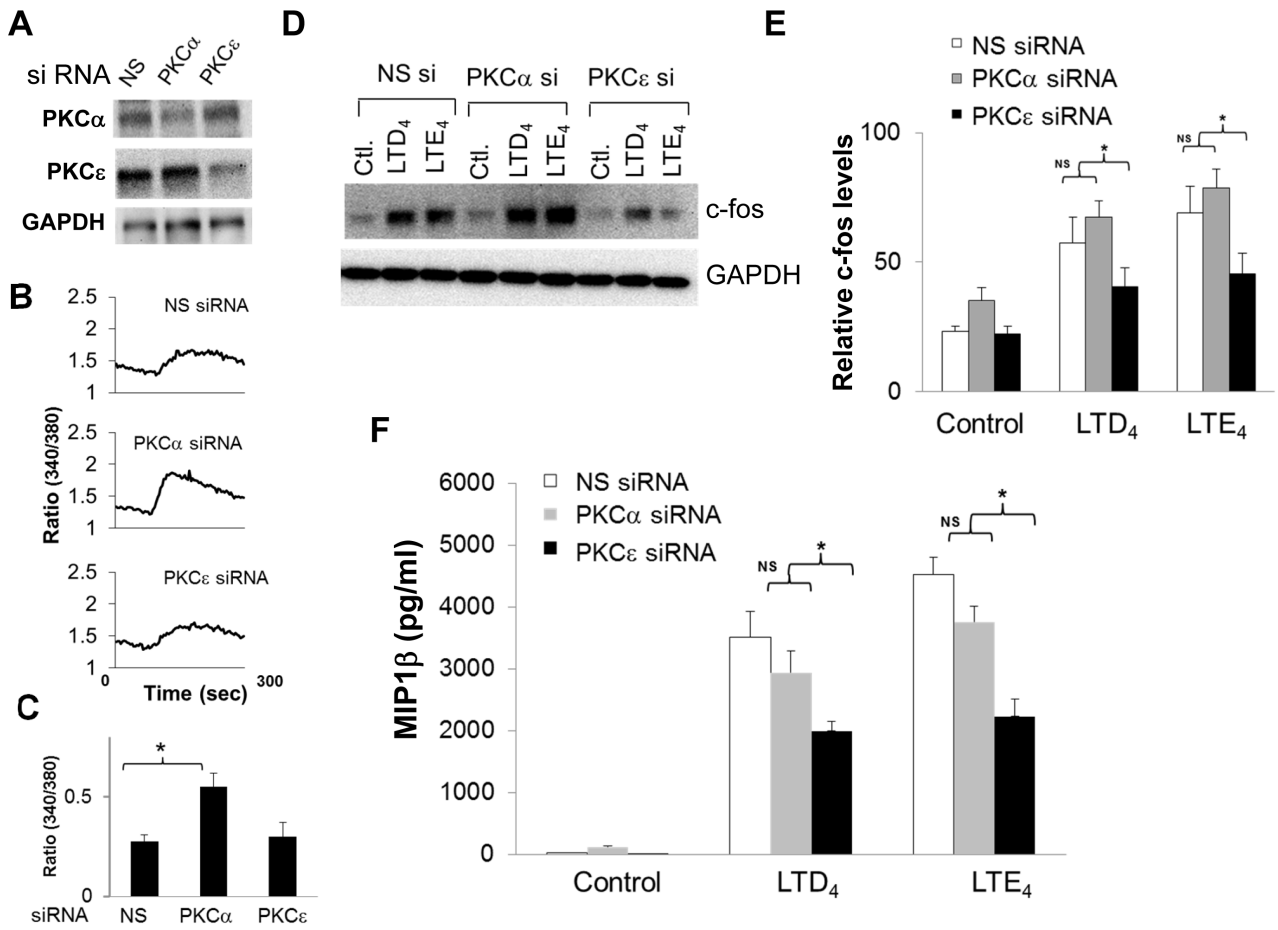
## Discussion

In the present study, we demonstrate that cys-LTs activate two isoforms of protein kinases, PKC $\alpha$  and PKC $\epsilon$  and that these two isoforms differentially regulate cys-LT-mediated MC function. PKC $\epsilon$  is essential for cys-LT-mediated c-fos expression and MIP1 $\beta$  generation, while PKC $\alpha$  negatively regulates cys-LT-induced calcium flux (schematic, Fig. 7). Surprisingly, PKCs appear to be dispensable for expression and activation of ERK and CREB.

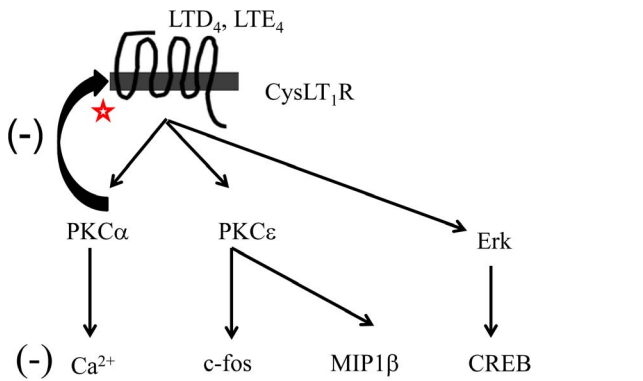
MCs are relevant cellular effectors of asthma and other allergic diseases, and cys-LTs are pertinent mediators of the same processes [37]. The mechanisms that control cys-LT-dependent biological responses are of considerable pathobiologic and clinical interest in both allergic and non-allergic disease [38]. We have previously demonstrated that cys-LTs induce robust calcium flux in hMCs [21,23] and LAD2 cells via CysLT<sub>1</sub>R (based on pharmacologic interference using selective antagonists) [22]. We have shown earlier that MK571 specifically blocks calcium flux and Erk phosphorylation in CHO cells expressing CysLT<sub>1</sub>R, but not CysLT<sub>2</sub>R suggesting its specificity [22]. MK571 is also reported to have inhibitory activity against MRP1 [39]. Further, it was shown that MK571 treatment increased intracellular LTC<sub>4</sub> concentration in eosinophils and modulate IL-4 levels from preformed vesicles via a putative intracellular CysLT receptor [40]. However, cys-LT-induced inflammatory mediator production in MCs require de novo transcriptional and translational mechanisms and no such putative intracellular CysLTR has been identified. Therefore, we believe that the observed inhibitory effects of MK571 are mostly directed at CysLT<sub>1</sub> receptor on the plasma membrane. In the current study, we elucidate that pharmacological inhibition of PKCs followed by stimulation of

cells with cys-LTs resulted in significant augmentation of calcium flux in MCs. This finding is consistent with desensitization of CysLT<sub>1</sub>R by PKCs reported in other cell systems. Crooke and colleagues observed that LTD<sub>4</sub> activates PKC, and the same research team [29,41] noted that inhibitors of PKC increased the mobilization of Ca<sup>2+</sup> induced by LTD<sub>4</sub> in the leukemic cell line RBL-1 using pharmacological activators and inhibitors. Winkler et al. [30] have reported that the broad PKC inhibitor staurosporine potentiated the LTD<sub>4</sub>-induced Ca<sup>2+</sup> signal in differentiated U-937 cells. In COS-1 cells overexpressing CysLT<sub>1</sub>R, pharmacological inhibition of PKC activity was shown to enhance calcium mobilization stimulated by LTD<sub>4</sub> [31]. However the exact molecular mechanism(s) underlying this process are not well known.

Enhanced receptor activation is usually translated into increased receptor function. Relief of PKC-mediated desensitization of endogenous CysLT<sub>1</sub>R augments multiple LTD<sub>4</sub>-stimulated cellular functions, with associated increases in intracellular signaling events [42]. However, while our data indicate that PKC inhibition augmented cys-LT-induced calcium signaling, we also found that it suppressed cys-LT-induced c-fos expression and chemokine secretion. Activation of c-fos by LTD<sub>4</sub> has been reported previously in HEK cells expressing CysLT<sub>1</sub>R [43]. Recently, Ng et al., reported that LTC<sub>4</sub>-mediated CysLT<sub>1</sub>R is desensitized by PKC-dependent phosphorylation and that prevention of this signaling by PKC inhibition led to loss of calcium-dependent gene expression, despite potentiation of Ca<sup>2+</sup> release [36]. This signal was proposed to delay the activation of CRAC channels resulting in the decreased c-fos expression. In the present study using LAD2 cells, we observed that both LTD<sub>4</sub> and LTE<sub>4</sub> significantly increased the expression of c-fos, consistent with the earlier study



**Figure 6. Effect of siRNA-mediated knockdown of PKC $\alpha$  and PKC $\epsilon$  on cys-LT-mediated calcium, c-fos and MIP1 $\beta$  generation by LAD2 cells.** PKC $\alpha$  and PKC $\epsilon$  isoforms were Knocked down using specific siRNAs against PKC $\alpha$  and PKC $\epsilon$  (10 nM). Non-specific (NS) siRNA was used as a control. The siRNA treated cells were analyzed for (A) the expression of PKC $\alpha$ , PKC $\epsilon$  and GAPDH, (B, C) LTD $_4$  (500 nM)-induced calcium influx, and quantitative analysis, (D, E) cys-LT-induced c-fos expression, (F) MIP1 $\beta$  production. Cells were treated with 500 nM of LTD $_4$  and LTE $_4$  for 5 minutes (calcium flux), 1 h (c-fos expression) and 6 h (MIP1 $\beta$ ). Data shown are  $\pm$ SD of three separate experiments. \* $P$ <0.05, \*\* $P$ <0.001. doi:10.1371/journal.pone.0071536.g006



**Figure 7. A model depicting PKC regulated cys-LT signaling in MCs.** Hypothetical mechanism(s) depicting cys-LT-mediated signaling in MCs by PKCs. CysLT $_1$ R activation by LTD $_4$  or LTE $_4$  activates PKC $\alpha$  and PKC $\epsilon$ . PKC $\alpha$  desensitize CysLT $_1$ R by phosphorylating the receptor and negatively regulating the calcium flux. On the other hand, PKC $\epsilon$  activation by CysLT $_1$ R activates c-fos expression, MIP1 $\beta$  production. Cys-LTs also activate Erk and CREB independent of PKCs. doi:10.1371/journal.pone.0071536.g007

[36]. Our data demonstrate that LTD $_4$  and LTE $_4$  also induce c-fos phosphorylation. This increase in phosphorylation and expression of c-fos is mediated through an MK-571 sensitive CysLTR and PKC. Since cys-LTs activate both Erk and CREB [22], we investigated if PKC inhibition altered cys-LT-mediated phosphorylation of these signaling molecules. Although cys-LTs robustly enhanced phosphorylation of Erk and CREB, inhibition of PKCs surprisingly had no effect on this signal. These findings suggest that modulation of PKC activity may couple CysLTR signaling to distinct signaling pathways. It is also possible that at least some of the PKC-independent signaling events may occur through receptors other than CysLT $_1$ R.

Despite the fact that cys-LT-mediated calcium signaling was enhanced by global PKC inhibition (Fig. 1), c-fos expression and MIP1 $\beta$  generation was substantially suppressed. While this finding could reflect a requirement for CysLT $_1$ R receptor desensitization to facilitate gene induction as suggested by the Ng et al., it also suggested that cys-LTs activate more than one PKC isoform in MCs. Indeed, we found that MCs express PKC  $\alpha$ ,  $\beta$ II,  $\gamma$ ,  $\delta$ ,  $\epsilon$ ,  $\theta$  and  $\zeta$  isoforms but only PKC $\alpha$  and PKC $\epsilon$  were phosphorylated in response to cys-LTs. Notably, we found that PKC $\alpha$  knockdown significantly augments calcium flux, but has little effect on cys-LT-induced c-fos and MIP1 $\beta$  production. However, knockdown of



PKC $\epsilon$  significantly attenuated cys-LT-induced c-fos phosphorylation, expression and MIP1 $\beta$  production without altering calcium flux. Activation of PKC $\epsilon$  by cys-LTs has been showed in other systems [17,32,44] as well. Interestingly, PKC $\epsilon$  was shown to be essential for LTD $_4$ -induced calcium signal in intestinal epithelial cells, suggesting that coupling of cys-LTs to signaling events is regulated in a cell type-specific manner. In conclusion, our study identifies specific isoforms of PKCs, PKC $\alpha$  and PKC $\epsilon$  that are activated by cys-LTs and differentially regulate distinct MC functions, critical for the progression and pathology of asthma.

## References

- Davidson AB, Lee TH, Scanlon PD, Solway J, McFadden ER, Jr., et al. (1987) Bronchoconstrictor effects of leukotriene E $_4$  in normal and asthmatic subjects. *Am Rev Respir Dis* 135: 333–337.
- Drazen JM, Austen KF (1987) Leukotrienes and airway responses. *Am Rev Respir Dis* 136: 985–998.
- Kanaoka Y, Boyce JA (2004) Cysteinyl leukotrienes and their receptors: cellular distribution and function in immune and inflammatory responses. *J Immunol* 173: 1503–1510.
- Drazen JM, O'Brien J, Sparrow D, Weiss ST, Martins MA, et al. (1992) Recovery of leukotriene E $_4$  from the urine of patients with airway obstruction. *Am Rev Respir Dis* 146: 104–108.
- Christie PE, Hawksworth R, Spur BW, Lee TH (1992) Effect of indomethacin on leukotriene $_4$ -induced histamine hyperresponsiveness in asthmatic subjects. *Am Rev Respir Dis* 146: 1506–1510.
- Wenzel SE, Larsen GL, Johnston K, Voelkel NF, Westcott JY (1990) Elevated levels of leukotriene C $_4$  in bronchoalveolar lavage fluid from atopic asthmatics after endobronchial allergen challenge. *Am Rev Respir Dis* 142: 112–119.
- Altman LC, Munk Z, Seltzer J, Noonan N, Shingo S, et al. (1998) A placebo-controlled, dose-ranging study of montelukast, a cysteinyl leukotriene-receptor antagonist. Montelukast Asthma Study Group. *J Allergy Clin Immunol* 102: 50–56.
- Hamilton A, Faiferman I, Stober P, Watson RM, O'Byrne PM (1998) Pranlukast, a cysteinyl leukotriene receptor antagonist, attenuates allergen-induced early- and late-phase bronchoconstriction and airway hyperresponsiveness in asthmatic subjects. *J Allergy Clin Immunol* 102: 177–183.
- Israel E, Cohn J, Dube L, Drazen JM (1996) Effect of treatment with zileuton, a 5-lipoxygenase inhibitor, in patients with asthma. A randomized controlled trial. Zileuton Clinical Trial Group. *Jama* 275: 931–936.
- Beller TC, Friend DS, Maekawa A, Lam BK, Austen KF, et al. (2004) Cysteinyl leukotriene 1 receptor controls the severity of chronic pulmonary inflammation and fibrosis. *Proc Natl Acad Sci U S A* 101: 3047–3052.
- Beller TC, Maekawa A, Friend DS, Austen KF, Kanaoka Y (2004) Targeted gene disruption reveals the role of the cysteinyl leukotriene 2 receptor in increased vascular permeability and in bleomycin-induced pulmonary fibrosis in mice. *J Biol Chem* 279: 46129–46134.
- Kim DC, Hsu FI, Barrett NA, Friend DS, Grenningloh R, et al. (2006) Cysteinyl leukotrienes regulate Th2 cell-dependent pulmonary inflammation. *J Immunol* 176: 4440–4448.
- Heise CE, O'Dowd BF, Figueroa DJ, Sawyer N, Nguyen T, et al. (2000) Characterization of the human cysteinyl leukotriene 2 receptor. *J Biol Chem* 275: 30531–30536.
- Lynch KR, O'Neill GP, Liu Q, Im DS, Sawyer N, et al. (1999) Characterization of the human cysteinyl leukotriene CysLT $_1$  receptor. *Nature* 399: 789–793.
- Austen KF, Maekawa A, Kanaoka Y, Boyce JA (2009) The leukotriene E $_4$  puzzle: finding the missing pieces and revealing the pathobiologic implications. *J Allergy Clin Immunol* 124: 406–414; quiz 415–406.
- Maekawa A, Kanaoka Y, Xing W, Austen KF (2008) Functional recognition of a distinct receptor preferential for leukotriene E $_4$  in mice lacking the cysteinyl leukotriene 1 and 2 receptors. *Proc Natl Acad Sci U S A* 105: 16695–16700.
- Paruchuri S, Tashimo H, Feng C, Maekawa A, Xing W, et al. (2009) Leukotriene E $_4$ -induced pulmonary inflammation is mediated by the P2Y $_12$  receptor. *J Exp Med* 206: 2543–2555.
- Gurish MF, Boyce JA (2006) Mast cells: ontogeny, homing, and recruitment of a unique innate effector cell. *J Allergy Clin Immunol* 117: 1285–1291.
- Wedemeyer J, Tsai M, Galli SJ (2000) Roles of mast cells and basophils in innate and acquired immunity. *Curr Opin Immunol* 12: 624–631.
- Mellor EA, Frank N, Soler D, Hodge MR, Lora JM, et al. (2003) Expression of the type 2 receptor for cysteinyl leukotrienes (CysLT $_2$ R) by human mast cells: Functional distinction from CysLT $_1$ R. *Proc Natl Acad Sci U S A* 100: 11589–11593.
- Mellor EA, Maekawa A, Austen KF, Boyce JA (2001) Cysteinyl leukotriene receptor 1 is also a pyrimidnergic receptor and is expressed by human mast cells. *Proc Natl Acad Sci U S A* 98: 7964–7969.
- Paruchuri S, Jiang Y, Feng C, Francis SA, Plutzky J, et al. (2008) Leukotriene E $_4$  activates peroxisome proliferator-activated receptor gamma and induces prostaglandin D $_2$  generation by human mast cells. *J Biol Chem* 283: 16477–16487.
- Mellor EA, Austen KF, Boyce JA (2002) Cysteinyl leukotrienes and uridine diphosphate induce cytokine generation by human mast cells through an interleukin 4-regulated pathway that is inhibited by leukotriene receptor antagonists. *J Exp Med* 195: 583–592.
- Jiang Y, Kanaoka Y, Feng C, Nocka K, Rao S, et al. (2006) Cutting edge: Interleukin 4-dependent mast cell proliferation requires autocrine/intracrine cysteinyl leukotriene-induced signaling. *J Immunol* 177: 2755–2759.
- Jaken S, Parker PJ (2000) Protein kinase C binding partners. *Bioessays* 22: 245–254.
- Mellor H, Parker PJ (1998) The extended protein kinase C superfamily. *Biochem J* 332 (Pt 2): 281–292.
- Newton AC (1997) Regulation of protein kinase C. *Curr Opin Cell Biol* 9: 161–167.
- Nishizuka Y (1995) Protein kinase C and lipid signaling for sustained cellular responses. *Faseb J* 9: 484–496.
- Vegesna RV, Wu HL, Mong S, Crooke ST (1988) Staurosporine inhibits protein kinase C and prevents phorbol ester-mediated leukotriene D $_4$  receptor desensitization in RBL-1 cells. *Mol Pharmacol* 33: 537–542.
- Winkler JD, Sarau HM, Foley JJ, Crooke ST (1990) Inhibitors of protein kinase C selectively enhanced leukotriene D $_4$ -induced calcium mobilization in differentiated U-937 cells. *Cell Signal* 2: 427–437.
- Naik S, Billington CK, Pascual RM, Deshpande DA, Stefano FP, et al. (2005) Regulation of cysteinyl leukotriene type 1 receptor internalization and signaling. *J Biol Chem* 280: 8722–8732.
- Thodeti CK, Nielsen CK, Paruchuri S, Larsson C, Sjolander A (2001) The epsilon isoform of protein kinase C is involved in regulation of the LTD $_4$ -induced calcium signal in human intestinal epithelial cells. *Exp Cell Res* 262: 95–103.
- Kirshenbaum AS, Akin C, Wu Y, Rottem M, Goff JP, et al. (2003) Characterization of novel stem cell factor responsive human mast cell lines LAD 1 and 2 established from a patient with mast cell sarcoma/leukemia; activation following aggregation of FcepsilonRI or FcgammaRI. *Leuk Res* 27: 677–682.
- Ochi H, Hirani WM, Yuan Q, Friend DS, Austen KF, et al. (1999) T helper cell type 2 cytokine-mediated comitogenic responses and CCR3 expression during differentiation of human mast cells in vitro. *J Exp Med* 190: 267–280.
- Paruchuri S, Hallberg B, Juhas M, Larsson C, Sjolander A (2002) Leukotriene D $_4$  activates MAPK through a Ras-independent but PKCepsilon-dependent pathway in intestinal epithelial cells. *J Cell Sci* 115: 1883–1893.
- Ng SW, Bakowski D, Nelson C, Mehta R, Almeyda R, et al. (2012) Cysteinyl leukotriene type I receptor desensitization sustains Ca $^{2+}$ -dependent gene expression. *Nature* 482: 111–115.
- Boyce JA (2003) Mast cells: beyond IgE. *J Allergy Clin Immunol* 111: 24–32; quiz 33.
- Laidlaw TM, Boyce JA (2012) Cysteinyl leukotriene receptors, old and new; implications for asthma. *Clin Exp Allergy* 42: 1313–1320.
- Rius M, Hummel-Eisenbeis J, Keppler D (2008) ATP-dependent transport of leukotrienes B $_4$  and C $_4$  by the multidrug resistance protein ABCG4 (MRP4). *J Pharmacol Exp Ther* 324: 86–94.
- Bandeira-Melo C, Woods IJ, Phoofolo M, Weller PF (2002) Intracrine cysteinyl leukotriene receptor-mediated signaling of eosinophil vesicular transport-mediated interleukin-4 secretion. *J Exp Med* 196: 841–850.
- Vegesna RV, Mong S, Crooke ST (1988) Leukotriene D $_4$ -induced activation of protein kinase C in rat basophilic leukemia cells. *Eur J Pharmacol* 147: 387–396.
- Deshpande DA, Pascual RM, Wang SW, Eckman DM, Riemer EC, et al. (2007) PKC-dependent regulation of the receptor locus dominates functional consequences of cysteinyl leukotriene type 1 receptor activation. *Faseb J* 21: 2335–2342.
- Thompson C, Cloutier A, Bosse Y, Thivierge M, Guoill CL, et al. (2006) CysLT $_1$  receptor engagement induces activator protein-1- and NF-kappaB-dependent IL-8 expression. *Am J Respir Cell Mol Biol* 35: 697–704.
- Paruchuri S, Sjolander A (2003) Leukotriene D $_4$  mediates survival and proliferation via separate but parallel pathways in the human intestinal epithelial cell line Int 407. *J Biol Chem* 278: 45577–45585.

Understanding the signaling and players involved in CysLTR regulation can be useful in identifying better therapeutic targets for inflammatory asthma and allergic diseases.

## Author Contributions

Conceived and designed the experiments: SP JAB CKT VK ED NA. Performed the experiments: SP VK ED NA. Analyzed the data: SP VK ED NA. Contributed reagents/materials/analysis tools: SP JAB CKT. Wrote the paper: SP JAB CKT VK ED NA.