

ARTICLE

Intron 22 homologous regions are implicated in exons 1–22 duplications of the *F8* gene

Nathalie Lannoy^{*1,2,7}, Bernard Grisart^{3,7}, Stéphane Eeckhoudt⁴, Christine Verellen-Dumoulin³, Catherine Lambert⁵, Miikka Vikkula^{1,6} and Cédric Hermans^{2,5}

The intron 22 inversion found in up to 50% of severe hemophilia A patients results from a recombination between three intron 22 homologous copies (*int22h*). This study evaluated the implication of these copies in the formation of extended duplications comprising exons 1–22 of the *factor 8 (F8)* gene and their association with hemophilia and mental retardation. Two hemophilic patients with moderate and severe phenotypes and a third nonhemophilic patient with developmental delay were studied. All exhibited a duplication of *F8* gene exons 1–22 identified by multiplex ligation-dependent probe amplification along with abnormal patterns on Southern blotting and unexpected long-range PCR amplification. Breakpoint analysis using array comparative genomic hybridization was performed to delimit the extent of these rearrangements. These duplications were bounded on one side by the *F8* intragenic *int22h-1* repeat and on the other side by extragenic *int22h-2* or *int22h-3* copies. However, the simultaneous identification of a second duplication containing *F8* gene exons 2–14 for the moderate patient and the classical intron 22 inversion for the severe patient are considered in this study as the genetic causal defects of hemophilia. This study shows that the well-known *int22h* copies are involved in extended duplications comprising *F8* gene exons 1–22. These specific duplications are probably not responsible for hemophilia and intellectual disability, but should be carefully considered in genetic counseling, while continuing to investigate the causal mutation of hemophilia.

European Journal of Human Genetics (2013) 21, 970–976; doi:10.1038/ejhg.2012.275; published online 9 January 2013

Keywords: hemophilia; *F8* gene; genomic duplication; CGH array; *int22h* repeats

INTRODUCTION

The X-linked coagulation disorder hemophilia A (HA) is caused by mutations in the *factor 8 (F8)* gene, which encodes coagulation factor VIII (FVIII) and is located at Xq28, the telomeric end of the long arm of the X chromosome. The most recurrent mutations associated with severe HA are intron 1 and 22 inversions in the *F8* gene. During male gametogenesis, both inversions are mediated by intrachromosomal homologous recombination between the highly homologous copies located in intron 1 or 22 and other extragenic copies positioned more telomerically outside the gene.^{1–4}

Point mutations, deletions, and insertions were detected in all 26 exons of the *F8* gene in HA patients, causing phenotypes of variable severity characterized by complete or partial deficiency of circulating FVIII. Large deletions in the *F8* gene involving one or more exons account for about 5% of all severe HA cases,^{5,6} (HADB (aka HAMSTeRS) the Hemophilia A Database, <http://hadb.org.uk/>). The identification of a large duplication comprising one or more *F8* gene exons was recently made possible following the introduction of multiplex ligation-dependent probe amplification (MLPA) technology, with an estimated occurrence of 1%.^{7,8} Large duplications are associated with different severity of HA depending on the localization, length of exons involved, and on whether the duplications generate an in-frame or out-frame protein.^{9,10}

In a large HA cohort from Belgium undergoing diagnostic analysis,¹¹ two male patients with moderate and severe phenotypes were found with an abnormal band pattern of intron 22 inversion on Southern blotting (SB) and large duplications involving *F8* gene exons 1–22 using MLPA. These cases were further analyzed using high-resolution custom array comparative genomic hybridization (CGH). As supported by a third nonhemophilic patient with intellectual disability but the same duplication of *F8* gene exons 1–22 by MLPA, a comprehensive mechanistic model was proposed to explain these complex rearrangements.

MATERIALS AND METHODS

Case histories

Case 1. This 25-year-old male was diagnosed with HA at 4 months of age. FVIII concentrations measured by one-stage and chromogenic assays were between 2 and 4%, and thus considered as moderate HA. The patient had a history of recurrent knee, elbow, and ankle hemarthroses since infancy, without inhibitor development during replacement therapy. HA was observed in at least three generations. DNA samples from his obligate carrier mother and cousins of his maternal obligate carrier were tested.

Case 2. This 18-year-old patient was the only son of nonconsanguineous parents without a family history of coagulation disorders. Severe HA was diagnosed at the age of 1 year on account of large hematomas. The patient had

¹Center of Human Genetics UCLouvain, Cliniques Universitaires Saint-Luc, Bruxelles, Belgium; ²Institut de Recherche Expérimentale et Clinique (IREC), Université Catholique de Louvain, Bruxelles, Belgium; ³Center of Human Genetics Institut de Pathologie et de Génétique (IPG), Charleroi (Gosselies), Belgium; ⁴Haemostasis Laboratory, Department of Biological Chemistry, Cliniques Universitaires Saint-Luc, Bruxelles, Belgium; ⁵Haemostasis and Thrombosis Unit, Haemophilia Clinic, Division of Haematology, Cliniques Universitaires Saint-Luc, Bruxelles, Belgium; ⁶Laboratory of Human Molecular Genetics de Duve Institute, Université Catholique de Louvain, Bruxelles, Belgium

⁷These authors contributed equally to this work.

*Correspondence: N Lannoy, Centre de génétique Humaine, Cliniques Universitaires Saint-Luc, Avenue Hippocrate 10, B-1200 Bruxelles, Belgium. Tel: +32 2 764 6723; Fax: +32 2 764 6939; E-mail: nathalie.lannoy@uclouvain.be

Received 13 August 2012; revised 5 November 2012; accepted 15 November 2012; published online 9 January 2013

a history of recurrent knee, elbow, and ankle hemarthroses since infancy. No inhibitor development occurred during replacement therapy. His mother was diagnosed as a carrier female.

Case 3. This 2^{1/2}-year-old patient was prematurely born at 34^{2/7} weeks of gestation. At birth, Pierre Robin sequence with micrognathia, cleft palate, glossoptosis, and upper airway obstruction was diagnosed. The patient was developmentally delayed: at 11 months he sat upright and at 2^{1/2} years started walking, saying just a few words. Facial features comprised a high forehead, long face, upper eyelid fullness, and convergent strabismus. The nasal bridge was broad, and anteversion of the nostrils was observed together with a long philtrum, open mouth, thin upper lip, and microretrognathia. Large ears, fetal fingertip pads, rocker bottom feet, and pes valgus were noted. Array CGH revealed a large duplication at Xq28 located in the intron 22 homologous region (*int22h*) between *int22h-1* and *int22h-2* repeats. The patient had no coagulation disorder, with normal FVIII activity.

FVIII activity and FVIII inhibitor screening

FVIII activity levels (FVIII:C) were determined by standard one-stage coagulation and chromogenic assays. FVIII inhibitor screening and titration were performed according to Bethesda/Nijmegen modification assays.

DNA collection

A blood sample (5–10 ml) was collected in an EDTA tube, and genomic DNA purification from peripheral leukocytes was performed using salting out procedures.¹²

Detection of intron 1 and 22 inversions

The intron 22 inversion was detected using both SB¹¹ and a modified long-range PCR (LR-PCR) adapted from Bagnall *et al.*¹³ Details of this method are available upon request. To interpret the abnormal band patterns obtained using SB, a combination of primers was analyzed in separate reactions: H1-F and H1-R for detecting *int22h-1*; H2-F and H2-3 R for *int22h-2*; H3-F and H2-3 R for the *int22h-3* repeat; H1-F and H2-3 R in addition to H3-F and H1-R for detecting rearrangements between *int22h* copies.

The method for the detection of intron 1 inversion was performed as previously described.⁴

Multiplex ligation-dependent probe amplification

MLPA was performed as previously described.¹¹

Array CGH, hybridization procedures, and analysis

High-resolution custom array CGH (Agilent 8 × 15 K, Santa Clara, CA, USA) targeting duplications was designed using e-arrays (Agilent). A backbone set of 2247 probes was selected on chromosome X, whereas 10384 probes were chosen in a targeted region between position 153346981 Mb and the q-telomeric end of chromosome X (hg19 (GRCh37) assembly). Array CGH was performed according to the manufacturer's instructions using 350 ng of genomic DNA in a random priming labeling reaction (Bioprime Total Genomic Labeling Module, Invitrogen, Paisley, UK). Expected log ratio values for duplication in males and females were 1 and 0.58, respectively. Aberration calls were performed using ADM2, with a threshold of 6.0 in Genomic Work Bench. Incorporation of nonunique probes in the analysis may slightly modify the aberration breakpoints. These alternative breakpoints are represented as light gray boxes in Figure 2.

Quantitative PCR to validate duplication breakpoints

Amplifications distal to repeat *int22h-3* were not easily assessed using microarray analysis given the highly repetitive nature of the genomic interval between *int22h-3* and the *TMLHE* gene. To confirm the array results, a quantitative PCR (qPCR) system was developed. It was impossible to design a single-site amplification site. The selected primers (forward: 5'-TGT GCCAAAGTCCAGAAATAGT-3'; reverse: 5'-CCAACAGAGAAAGTAGCAGG AA-3') amplified two loci, namely chrX: 154575182–154575278 (proximal to repeat a2) and chrX: 154724935–154725031 (distal to repeat a3).

Consequently, in a male, if the duplication encompassed a single site, a genome equivalent to 0.75 was expected (three copies *vs* four in normal females); if both sites were duplicated, a genome equivalent to 1 was expected. In a female carrier with duplication at one or two sites, a genome equivalent to 1.25 or 1.5, respectively, was expected (*vs* normal female DNA). Normalization and qPCR data analysis were conducted according to Hoebeek *et al.*¹⁴ using two reference genes. An additional gene on chromosome X (*MECP2*) was used as negative control.

Multiplex PCR assays

Multiplex amplicon quantification (MAQ) is a robust, rapid, and easy-to-perform method for analyzing specific copy-number variations. The method, performed according to the manufacturer's protocol, consists of fluorescently labeled multiplex PCR with amplicons in the copy-number variations (target amplicons) and amplicons with a stable copy number. Two series of five primer pairs extending from position 154147798 to 154344960 on chromosome X for the first series, and from 154441804 to 154664293 on chromosome X for the second were designed to target *F8* locus (Table 1). The first amplicon was located in *F8* gene intron 14, and the last between *int22h-2* and *int22h-3* repeats.

MAQ analysis was performed according to the manufacturer's protocol. Details of this method are available upon request. Raw data generated by fragment analysis on a capillary sequencer were analyzed using MAQ-S (Multiplicom (<http://www.multiplicom.com>)), a specially designed software program, to calculate and visualize the normalized peak area or dosage quotient, which reflected the copy number of each target amplicon.

RESULTS

For the three patients with chromosomal rearrangements affecting gene *F8*, data including gene dosage analysis obtained by SB and LR-PCR (Figure 1), MLPA (data not shown), targeted array CGH, and MAQ (Figure 2) are described below case-by-case. The extent of the duplication was confirmed using qPCR. Owing to the highly repetitive genomic sequence around the *int22h-2* and *int22h-3* repeats, alternative quantification methods were required to validate the extent of the rearranged regions that were not clearly defined using array CGH (Figure 2).

Case 1

A normal profile with an additional 20-kb fragment was observed using SB. The normal amplification of *int22h* copies was obtained in LR-PCR using repeat-specific primers pairs. However, amplification was also obtained with the combination of H1-F and H2-3R primers. A large duplication of *F8* gene exons 1–22 was identified using MLPA assay, along with a second duplication of exons 2–14. Owing to insufficient patient DNA, DNA samples from his obligate carrier mother, presenting the same SB and MLPA patterns, were used for array CGH analysis. A 0.5-Mb duplication (log ratio = 0.520) extending from intron 22 of factor *F8* (position 154117967 bp on genome build hg19) to repeat sequences *int22h-2* (position 154609974 bp) was revealed in the vicinity of the *H2AFB2* and *F8A2* genes, which was confirmed by MAQ assay. Higher log ratios between positions 154146529 and 154229174 bp (0.870) suggested that this region within the duplication was present in three copies (i.e., 'second duplication'). The breakpoints of this second 82-kb duplication fell within intron 14 and intron 1 of *F8* gene, respectively.

Case 2

An abnormal pattern was observed using SB, with normal fragments containing *int22h-2* and *int22h-3* repeats as well as a 17.5-kb band (probably duplicated), which was associated with one of the two rearranged fragments in an intron 22 type 1 inversion. This classic inversion was confirmed by the *int22h-1* rearranged 11.5-kb fragment

Table 1 Localization, primer sequences, and sizes of PCR products for studying copy number changes at the *F8* locus

Amplicon	Size (bp) ^a	Start ^b	Stop ^b	Primer forward (5'-3') ^c	Primer reverse (5'-3') ^d
<i>MAQ01 assay</i>					
amp1_1	91 + 30	154 147 798	154 147 888	AGGAAACTTGGGCAGCAGA	AACAATGCCACCAAGCAGA
amp1_2	180 + 30	154 213 190	154 213 369	CAGCAAAGTAGGCACACAGC	CCTGATGCCTCAAGCTAACC
amp1_3	143 + 30	154 282 491	15 428 2633	GAAACAGAATTGCCTCTGTAACC	CCTGATGGGAAGGAGGATG
amp1_4	70 + 30	154 318 777	154 318 846	AATAAGTTTGTGACGCTTTCAGGATG	CAAACACAAGAACCAGGAAACC
amp1_5	295 + 30	154 344 666	154 344 960	ATCTTTCAAGGGCAAGGATG	GTGGCAAAGCAGCACTGA
Amplicon	Size (pb) ^a	Start ^b	Stop ^b	Primer forward (5'-3')	Primer reverse (5'-3')
<i>MAQ02 assay</i>					
amp2_1	136 + 30	154 441 669	154 441 804	GTGGAGATTGGGACAGAACC	GATATCCTTAGCAACTTCCAGAACC
amp2_2	188 + 30	154 470 742	154 470 929	GATTTGAAACACCTCACTATAACC	TCACCTAACCCAGACAGAAATG
amp2_3	86 + 30	154 563 105	154 563 190	CTCCTCACATAACAAGCACACAG	CTTCTACAATGGACAAACATCACAG
amp2_4	165 + 30	154 630 587	154 630 751	GAGTGCTTGAGGAAAGAGGCTA	TGGCAAACACATCCATGC
amp2_5	107 + 30	154 664 187	154 664 293	TTTAAGCTAGAGCAGCCGTGT	AGGGAAGAGGAGAGGCAGA

F8, factor 8; MAQ, multiplex amplicon quantification.

^aThe size of amplicons corresponds to the sum of the distance between primer pairs and the length of the tail added to the locus-specific primer pairs for PCR amplification (30 bp in total).

^bThe positions of primers on chromosome X are based on the hg19 assembly.

^cA tail used for PCR amplification was added at the 5' end of these locus-specific primers (5'-AGCGGATAACAATTTTCACACAGG-3').

^dA tail used for PCR amplification was added at the 5' end of these locus-specific primers (5'-GTTTCTT-3').

via LR-PCR. A large duplication of *F8* gene exons 1–22 was identified using MLPA. Array CGH analysis revealed a large duplication of 0.6 MB extending from the *int22h-1* to *int22h-3* repeats, or even further distally and so nearer the *TMLHE* gene. The region between the *int22h-2* and *int22h-3* repeats was clearly duplicated, but the highly repetitive nature of the region distal to h3 did not clarify whether this duplication extended more distally, given the lack of a unique probe in this interval. Thus, the duplication ranged from 154 118 907 to 154 722 370 or 154 731 487 bp on chromosome X. qPCR using this male patient's DNA with primers hybridizing to both sides of *int22h-2* and *int22h-3* repeats provided a genome equivalent of 0.83 vs normal female DNA. This suggested that the region close to the *int22h-2* repeat was duplicated, whereas the duplication did probably not extend beyond the *int22h-3* repeat in the *TMLHE* gene region (two copies close to *int22h-2* + 1 copy close to *int22h-3* vs four copies in the reference female).

The patient's mother had the same MLPA and SB profiles.

Case 3. The patient's SB results were the same as case 1. A large duplication of *F8* gene exons 1–22 was identified using MLPA. His mother presented the same SB and MLPA patterns. Array CGH for both mother and son showed a large duplication between positions 154 116 088 and 154 606 719, which was located between *int22h-1* and *int22h-2* repeats (confirmed by MAQ analysis), whereas the interval between *int22h-2* and *int22h-3* repeats was not duplicated. qPCR performed using patient DNA provided a genome equivalent of 0.79, in line with a duplication in the proximal region of *int22h-2* repeat, but not distal to *int22h-3*.

MAQ analysis on normal DNA controls. Multiplex PCR assays were developed to detect the same 0.5- or 0.6-Mb duplication extending from *int22h-1* to *int22h-2* or *-3* repeats on 420 X chromosomes (84 females and 252 males). No duplication between *int22h-1* and extragenic *int22h* sequences was found. However, one 0.5-Mb heterozygous deletion between *int22h-1* and *int22h-2* repeats was

identified in a normal female. This deletion including *F8* gene exon 1–22 was confirmed via MLPA.

DISCUSSION

In a large cohort of 148 Belgian HA families analyzed for *F8* gene mutations, we identified a duplication of *F8* gene exons 1–22 in two male patients with moderate and severe HA.¹¹ A third duplication of *F8* gene exons 1–22 in a nonhemophilic patient suffering from intellectual disability and Pierre Robin syndrome (case 3) was added to this study. Case 1 patient with moderate HA presented a second duplication of *F8* gene exons 2–14, whereas case 2 with severe HA harbored the classic inversion of intron 22 type 1. Breakpoint array CGH analyses revealed that rearrangements were delimited by the intragenic *int22h-1* repeat on one side and on the other side, by *int22h-2* for cases 1 and 3, and *int22h-3* copies for case 2. These results demonstrate that partial *F8* gene segments may be duplicated by mechanisms involving the same DNA repeats as those involved in the classical intron 22 inversion. Based on these results, we propose a comprehensive modeling of the mechanisms involved.

Xq28 locus is considered a region at high risk of genomic instability, with micro-rearrangements (deletion or duplication) described, for example, in adrenoleukodystrophy,¹⁵ X-linked mental retardation syndrome (*MECP2*),¹⁶ and HA.^{1,2} Indeed, the *F8* gene intron 22 contains a 9.5-kb region known as copy *int22h-1*, which is outside the gene and situated ~0.5 and 0.6 Mb more telomerically to the two other highly homologous copies, namely *int22h-2* and *int22h-3*.^{1,2} The *int22h-1* and *int22h-3* copies lying in opposite directions are responsible for recurrent intrachromosomal rearrangements involving the *F8* 'distal' inversion or inversion type 1. Recently, *int22h-1* and *int22h-2* sequences were reported to display the same orientation,¹⁷ which may cause, theoretically, highly deleterious 0.5 Mb deletions or duplications in the case of recombination between misaligned sister chromatids or homologous chromosomes. It has been suggested that they are either extremely rare or nonexistent^{13,18,19} and could cause problems in mutation testing in HA.²⁰ However, a very recent

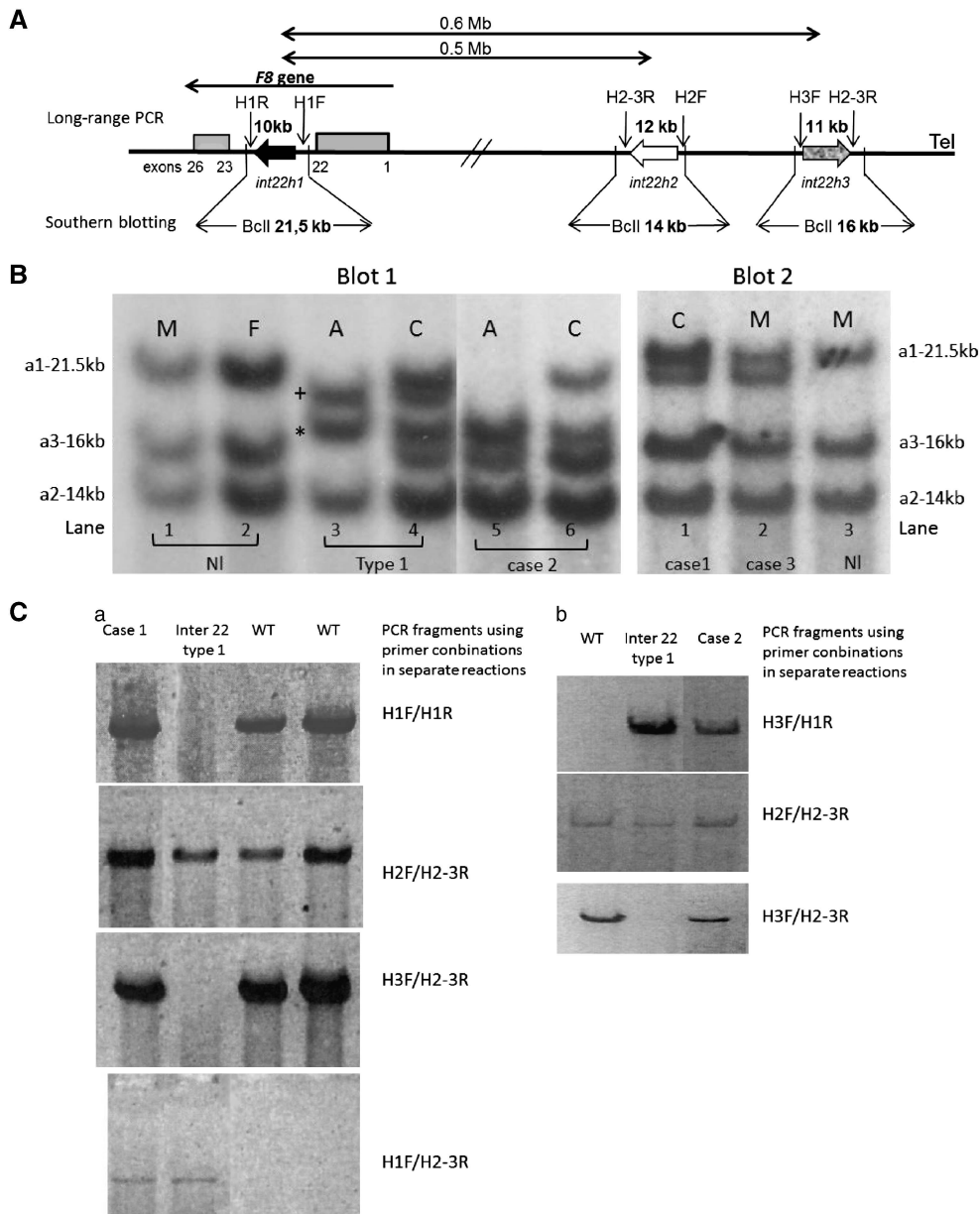


Figure 1 Results of SB and LR-PCR. **(A)** Schematic representation of *int22h* copies at the Xq28 locus according to Bagnall *et al.*¹³ (figure not to scale). The large arrows indicate the position of the *int22h* copies. The arrowhead represents the orientation of the DNA sequence. Gray boxes correspond to exons 1–22 and 23–26 of the *F8* gene. The location of primer-binding sites and expected LR-PCR product size are drawn above, while the expected BclI restriction fragments sizes obtained by SB are indicated below. **(B)** Results of SB. Blot 1 lanes 1 and 2 correspond to a normal pattern. The probe hybridized with three fragments. The largest 21.5-kb BclI fragment contains 9.5 kb segment of intron 22 (*int22h-1* or a1). The *int22h-3* repeat or a3, considered the most telomeric, is located in the 16-kb BclI fragment. The *int22h-2* repeat or a2 is positioned in the 14-kb BclI fragment. Lanes 3 and 4: classical inversion of intron 22 type 1 in a male (A) and in a female carrier (C). + Indicates the rearranged 20 kb *int22h-1/3*; * is associated with the rearranged 17.5-kb *int22-3/1* centromeric repeat. For further details, see Figure 3A. Lanes 5 and 6: case 2 patient with his carrier mother. Fragments corresponding to *int22h-2* and *int22h-3* repeats have normal size. However, the band associated with *int22h-2* copies or a2 appears duplicated. The fragment corresponding to 17.5 kb (also duplicated) indicates the presence of the classical inversion of intron 22 type 1. However, the absence of the 20-kb fragment suggests a more complex rearrangement. Blot 2 lane 1: carrier mother of case 1 patient. Normal pattern with an additional 20-kb fragment. Lane 2: case 3 without the HA phenotype. Case 1 patient presented the same pattern as case 3 (data not shown). Lane 3 corresponds to a normal pattern. A, HA affected patient; C: carrier HA female; F, female; M, male. **(C)** Results of LR-PCR. As shown in a wild-type patient (WT), PCR amplification was only obtained using combinations of primers: H1-F/H1-R for detecting *int22h-1*; H2-F/H2-3R for *int22h-2*; and H3-F/H2-3R for *int22h-3* repeat. For a patient harboring the classical inversion of intron 22 type 1, PCR fragments could be only obtained using primers H3-F/H1-R and H1-F/H2-3R, indicating the recombination between the intragenic *int22h-1* repeat with its extragenic *int22h-3* homologs. As shown in Figure 3A, amplification of the *int22h-2* copy with primers H2-F/H2-3R is conserved. For case 1 (a), PCR amplification of the three *int22h* copies was obtained as the WT patient. However, PCR obtained with H1-F/H2-3R indicates a rearrangement between *int22h* copies. For case 2 (b), amplification with primers H3-F/H1-R and H1-F/H2-3R indicates the inversion of intron 22 type 1. However, PCR obtained with primers H3-F/H2-3R shows a more complex recombination.

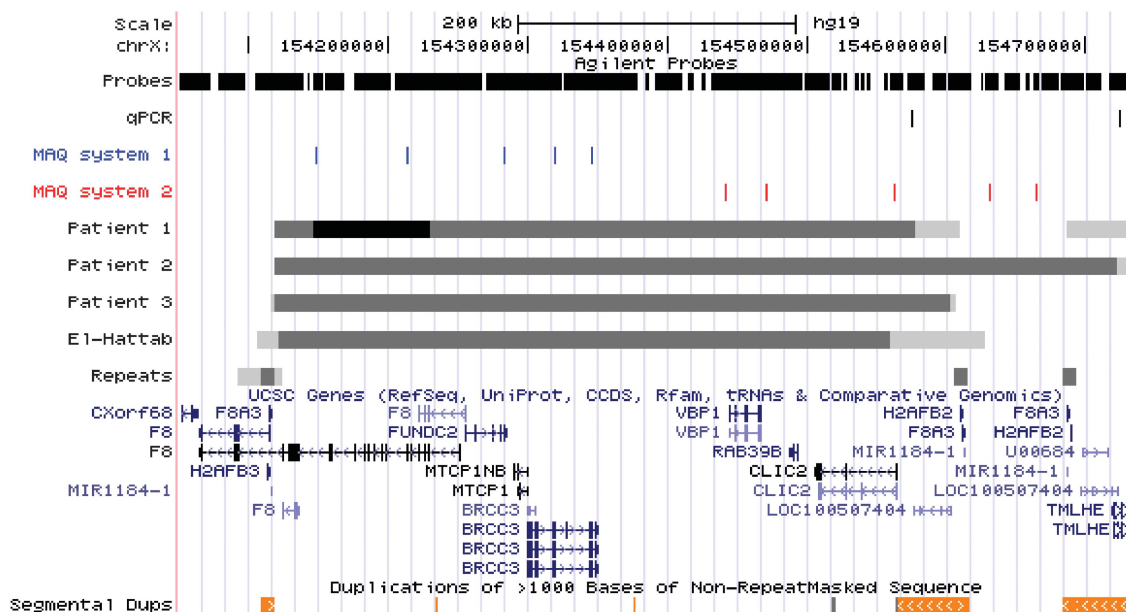


Figure 2 Fine-mapping and breakpoint analyses using array CGH or multiplex PCR assays. Illustration of the rearrangements of the Xq28 region using custom tracks in the UCSC browser. The scale is provided above. The section 'probes' shows the distribution of probes on the targeted custom array in the selected region (6526 probes in the selected window). Each vertical line corresponds to a probe. Sections 'qPCR' and 'MAQ systems 1 and 2' illustrate the localization of the qPCR and PCR systems used to confirm copy number changes (see article and Table 1 for details). Thereafter follow the rearrangement intervals as determined from the array CGH results for patients 1, 2, and 3 and from the 2011 publication by El-Hattab *et al.* (patients with duplication or deletion in fetus and carrier females). Clearly duplicated (or deleted) intervals are depicted in dark gray, whereas regions not clearly rearranged are shown in light gray. The region with three copies ('triplication') in female patient 1 is shown in black. The deletion identified by Pegoraro *et al.* is not provided as no fine-mapping information is available. The section 'repeats' show the *int22h-1*, *int22h-2*, and *int22h-3* repeats in dark gray as well as intron 22 of *F8* (gray rectangle). Genes and segmental duplications (>99% similarity) are depicted using information provided by the University of California, Santa Cruz (University of California, Santa Cruz genome browser. <http://genome.ucsc.edu>).

publication²¹ reported novel 0.5 Mb duplications between *int22h-1* and *int22h-2* copies in three unrelated males, presenting cognitive impairment, behavioral abnormalities, recurrent infections, and characteristic facial features.

Our report describes the same rearrangement in two patients (cases 1 and 3), both presenting a large duplication of *F8* gene exons 1–22 extending from *int22h-1* to *int22h-2* repeats. The presence of an extra 20-kb BclI band detected using SB is likely to be the consequence of genomic rearrangement, which produced the altered *int22h* restriction fragment as confirmed by LR-PCR (Figure 3). Additionally, we describe a more complex not previously described rearrangement in a severe HA patient (case 2) presenting a large duplication estimated at 0.6 Mb extending from *int22h-1* to *int22h-3* repeats. If the large duplication in the *F8* locus in cases 1 and 3 could be the consequence of *int22h-1* misaligning with a similarly oriented and more telomeric *int22h* repeat from the sister chromatid via a nonallelic homologous recombination mechanism, we presume that numerous different duplications are possible depending on the initial alignments. In case 2, our results suggest a nonallelic recombination in the female carrier between a normal X chromosome and intron 22 inversion of the sister X chromosome, resulting in a large duplication between *int22h-1* and *int22h-3* copies as well as fragments compatible with an intron 22 type 1 (Figure 3). This explains why this duplication extended between repeats *int22h-1* and *int22h-3*.

Whether these 0.5/0.6 Mb duplications mediated by *int22h-1/int22h-2* or *-3* rearrangement are associated with HA is uncertain. After excluding other causal mutations in *F8* gene exons via bidirectional sequencing, we assume that the HA phenotype of case 1 was associated with a second duplication of *F8* gene exons 2–14.

Numerous publications have reported the causality of large intragenic duplications, especially in HA patients with different phenotypes.^{7,22,23} Despite using different primer combinations, it was impossible to characterize the duplication breakpoints for this patient and his relative. In case 2, the recombination between the normal X chromosome and intron 22 inversion of the sister X chromosome produced a more complex rearrangement without maintaining a complete copy of the *F8* gene (Figure 3). Again, after complete gene sequencing we concluded that the severe HA phenotype of case 2 was caused by classical intron 22 inversion. In the study by El-Hattab *et al.*²¹, the index case of family 3 presented, along with his intellectual disability, a minor HA type with FVIII levels estimated at 24%. The complete sequencing of the *F8* gene revealed hemizyosity for the point mutation c.6089G>A (p.Ser2030Asn), which was associated with mild HA (HADB (aka HAMSTeRS) <http://hadb.org.uk/>). According to Figure 3Ba and as suggested by Bagnall *et al.*¹³, a complete copy of the *F8* gene is preserved after the formation of the 0.5-Mb duplication mediated by *int22h-1/int22h-2* rearrangement, thus producing normal FVIII levels. We propose that males or females with such an extending 0.5-Mb duplicated rearrangement would not be at risk of HA, as they maintain a normal copy of the *F8* gene unless if a causal mutation, such as the large duplication of exons 2–14 in case 1 or point mutation in family 3 of El-Hattab *et al.*'s study, occurs in the normal *F8* copy.

El-Hattab *et al.* suggested that the 0.5-Mb duplication mediated by *int22h-1/int22h-2* rearrangement was associated with a novel X-linked intellectual disability. However, several arguments are in contradiction with this conclusion. Indeed, no intellectual disability was observed in our hemophilic cases nor was there any developmental delay noted in

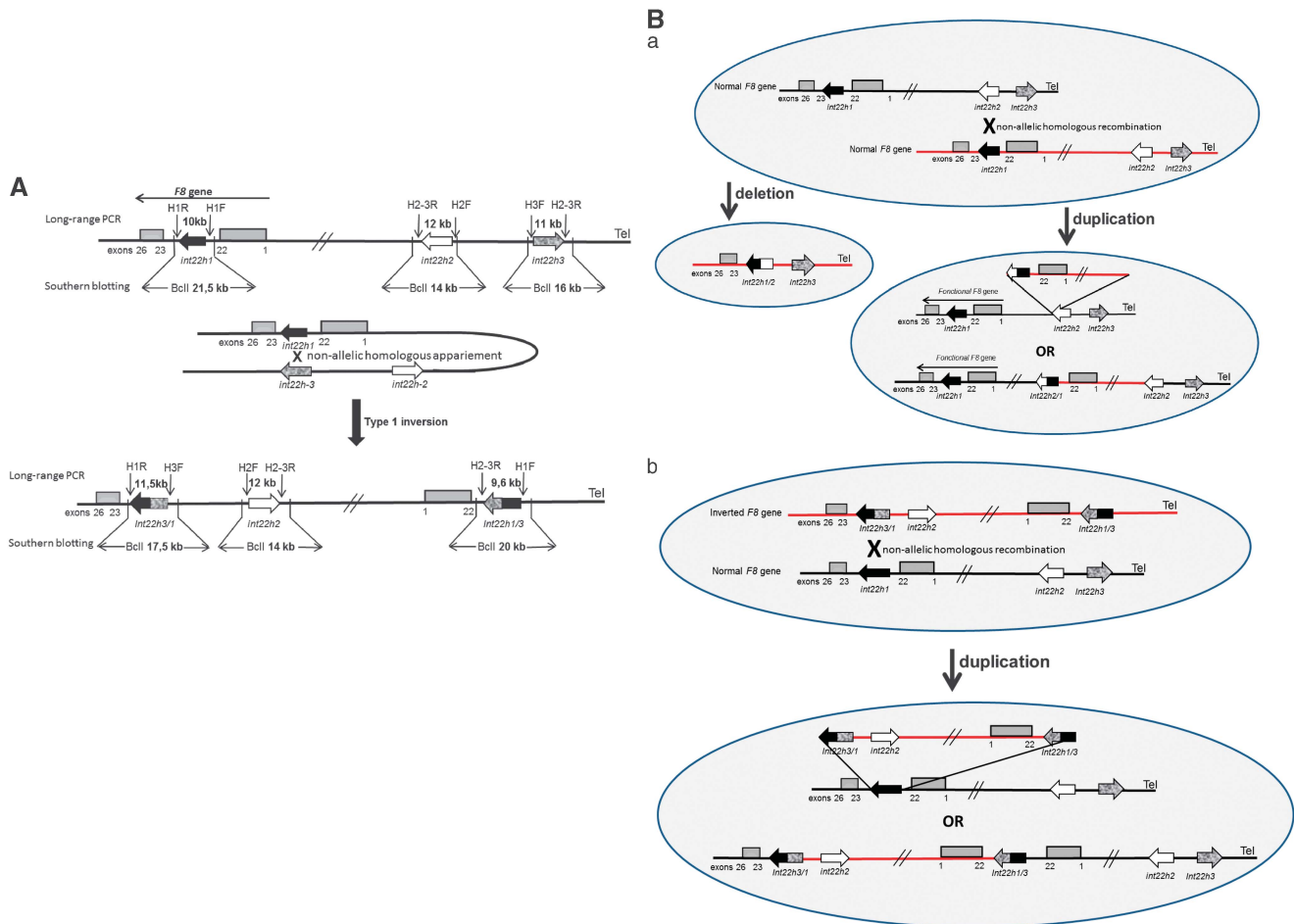


Figure 3 Nonallelic homologous recombination (NAHR) events between *int22h* copies (figures not to scale). **(A)** Schematic mechanism of the recurrent *int22h* inversion type 1 in severe HA. This mode of rearrangement is facilitated in male meiosis, as this mechanism involves flipping the end of the X chromosome, which is inhibited in female germ cells by X chromosome pairing. **(B)** Proposed mechanisms for the formation of complex duplication/deletion in cases 1 and 3 (a) and in case 2 (b). (a) Misalignment of two normal maternal X chromatids during meiosis, which may result in a NAHR mechanism in an unequal crossing over that provides copies with the duplication of 0.5 Mb between the *int22h-1* and *int22h-2* copies or the deletion of 0.5 Mb. The duplication maintains a normal and functional copy of the *F8* gene. Normal LR-PCR products and BclI restriction fragment sizes using SB are obtained for the three *int22h* copies. However, the duplication generates an additional fragment of 20 kb observed on SB as well as amplification with the combination of primers, H1-F and H2-3R. (b) Misalignment between one normal chromatid and another chromatid with an inversion of intron 22 in a carrier female during meiosis. Unequal crossing over by a NAHR mechanism produces duplication between *int22h-1* and *int22h-3* copies instead of duplication between *int22h-1* and *int22h-2* in the mechanism proposed in **B** (a) of this figure. This rearrangement involves the presence of two incomplete sequences of exons 1–22 of the *F8* gene, two copies of *int22h-2*, one copy of the *int22h-3* repeats, one copy associated with the rearranged fragment of 17.5 kb in the *int22-3/1* repeat, and one copy associated with another 17.5 kb rearranged fragment corresponding to the newly produced *int22-1/3* repeat.

the mothers and their relatives (obligate carrier grandmother, affected uncle, and his two obligate carrier cousins for the first case; carrier grandmother for the third case), whereas in El-Hattab *et al.*'s study, carrier mothers exhibited learning difficulties despite the abnormal X chromosome being preferentially inactivated. In our study, chromosome X-inactivation analysis at the androgen receptor^{24,25} showed skewed chromosome X inactivation for the case 1 mother (ratio 87:13) but no skewed chromosome X inactivation for the case 3 mother (ratio 80:20). Case 3 displayed dysmorphic features identical to those described in the three El-Hattab families, with several dissimilar features. Additionally, none of the six known genes localized in the 0.5/0.6-Mb duplicated intervals (Figure 2) were shown to be associated with X-linked intellectual disability. These genes exhibit low-expression levels in the brain with the exception of the *RAB39B* gene for which two different hemizygous mutations have

recently been identified in male patients presenting autism, spectrum disorder, epileptic seizures, and macrocephaly.²⁶

These 0.5/0.6 Mb duplications mediated by *int22h-1/int22h-2* or *-3* rearrangement must be very rare, as they are not reported in the Copy-Number Variation Database (database of genomic variants <http://projects.tcag.ca/variation/>). No new duplication was found in a screen of 420 X chromosomes via specific multiplex PCR. However, a new 0.5-Mb reciprocal deletion between *int22h-1* and *int22h-2* copies was reported in a normal female. As suggested by Pegoraro *et al.*²⁷ and El-Hattab *et al.*²¹, these deletions may be lethal for males *in utero* but have no phenotypic consequences in females, as they result in completely skewed chromosome X inactivation. As CGH is an increasingly used screening method in prenatal diagnosis and patients with cognitive and behavioral abnormalities, this 0.5 Mb deletion or the corresponding duplication is likely to be increasingly

found in the future. Clinical interpretation of large rare rearrangements identified by arrays is an important problem in current genetic testing and require guidelines to assess their clinical relevance.²⁸

In the literature, we found three studies^{29–31} describing patients with severe HA phenotypes associated with the same SB combination of fragments of 21.5, 20, 16, and 14 kb as found in our cases 1 and 3. The study of Zimmermann *et al.*³² identified an aberrant 20 kb band associated with a duplication of exons 7–22 in a patient with severe HA resulting from rearrangement with *int22h* repeats. Furthermore, two other studies^{33,34} reported the same abnormal SB profiles associated with severe HA (17.5, 16, and 14 kb) as in case 2. Only further analyses (sequencing and MLPA) are likely to reveal whether these abnormal SB patterns are the real cause of HA, thus improving genetic counseling.

The inversion of intron 22 occurs almost exclusively in male germ cells,³⁵ as the mechanism for intron 22 involves flipping the end of the X chromosome, which is facilitated in male meiosis but inhibited in female germ cells by X-chromosome pairing. Thus, the 0.5/0.6-Mb deletion or duplication mediated by *int22h* rearrangement could occur in maternal meiosis, as these rearrangements require the pairing of two homologous chromatids (Figure 3).

All duplications described in this article were maternally inherited. However, the parental origin of the arrangement could not be determined, as DNA from the ascending generation was not available. For case 1, it is currently impossible to determine which duplication (0.5 Mb or *F8* exons 2–14) occurred first or to identify the parental origin.

CONCLUSION

Our data provide additional proof for the genomic instability at Xq28, showing that the *int22h* copies responsible for the well-known intr22 inversion are implicated in extended duplications (and deletion) involving *F8* gene exons 1–22. These duplications are probably not associated with HA, as they coexisted with other molecular defects clearly responsible for HA. Contrary to a previous report and based on our study results,²¹ these duplications do not appear to be associated with intellectual disability.

CONFLICT OF INTEREST

The authors declare no conflict of interest.

ACKNOWLEDGEMENTS

We are indebted to the subjects participating in this study and their families. We thank Mrs I Abinet, Mr A Bosmans, and Mr V Kaydaszyk for their expert technical assistance, and Mrs Pascale Hilbert for chromosome-X-inactivation analysis. These studies were partially supported by a grant from Bayer Schering Pharma.

- Lakich D, Kazazian Jr HH, Antonarakis DE, Gitschier J: Inversions disrupting the factor VIII gene are a common cause of hemophilia A. *Nat Genet* 1993; **5**: 236–241.
- Naylor JA, Brinke A, Hassock S, Green PM, Giannelli F: Characteristic mRNA abnormality found in half the patients with severe hemophilia A is due to large DNA inversion. *Hum Mol Genet* 1993; **2**: 1773–1778.
- Antonarakis SE, The international consortium study. Factor VIII gene inversions in severe hemophilia A: results of an international consortium study. *Blood* 1995; **86**: 2206–2212.
- Bagnall RD, Waseem N, Green PM, Giannelli F: Recurrent inversion breaking intron 1 of the factor VIII gene is a frequent cause of severe haemophilia A. *Blood* 2002; **99**: 168–174.
- Oldenburg J, Ananyeva NM, Saenko EL: Molecular basis of haemophilia A. *Haemophilia* 2004; **10**: Suppl 4 133–139.

- Bogdanova N, Markoff A, Pollmann H *et al*: Spectrum of molecular defects and mutation detection rate in patients with severe hemophilia. *Hum Mutat* 2005; **26**: 249–254.
- Rost S, Löffler S, Pavlova A, Müller CR, Oldenburg J: Detection of large duplications within the factor VIII gene by MLPA. *J Thromb Haemost* 2008; **6**: 1996–1999.
- Lannoy N, Abinet I, Dahan K, Hermans C: Identification of *de novo* deletion in the factor VIII gene by MLPA technique in two girls with isolated factor VIII deficiency. *Haemophilia* 2009; **15**: 797–801.
- Acquila M, Pasino M, Lanza T, Bottini F, Molinari AC, Bicocchi MP: Duplication of exon 13 causes one third of the cases of mild hemophilia A in northern Italy. *Haematologica* 2004; **89**: 758–759.
- Zimmermann MA, Oldenburg J, Müller CR, Rost S: Characterization of duplication breakpoints in the factor VIII gene. *J Thromb Haemost* 2010; **8**: 2696–2704.
- Lannoy N, Abinet I, Bosmans A, Lambert C, Vermeylen C, Hermans C: Computational and molecular approaches for predicting unreported causal missense mutations in Belgian patients with haemophilia A. *Haemophilia* 2012; **18**: e331–e339.
- Miller SA, Dykes DD, Polesky HF: A simple salting out procedure for extracting DNA from human nucleated cells. *Nucleic Acids Res* 1988; **16**: 1215.
- Bagnall RD, Giannelli F, Green PM: Int22h-related inversions causing hemophilia A: a novel insight into their origin and a new more discriminant PCR test for their detection. *J Thromb Haemost* 2006; **4**: 591–598.
- Van der Lijft R, Poppe B, De Smet E *et al*: Rapid detection of VHL exon deletions using real-time quantitative PCR. *J Lab Invest* 2005; **85**: 24–33.
- Kutsche K, Ressler B, Katzer HG *et al*: Characterization of breakpoint sequences of five rearrangements in L1CAM and ABCD1 (ALD) genes. *Hum Mutat* 2002; **19**: 526–535.
- Bauters M, Van Esch H, Friez MJ *et al*: Nonrecurrent MECP2 duplications mediated by genomic architecture-driven DNA breaks and break-induced replication repair. *Genome Res* 2008; **18**: 847–858.
- Ross MT, Grafham DV, Coffey AJ *et al*: The DNA sequence of the human X chromosome. *Nature* 2005; **5**: 236–241.
- De Brasi CD, Bowen DJ: Molecular characteristics of the intron 22 homologs of the coagulation factor VIII gene: an update. *J Thromb Haemost* 2008; **6**: 1822–1824.
- Bagnall RD, Giannelli F, Green PM: Polymorphism and hemophilia A causing inversions in distal Xq28: a complex picture. *J Thromb Haemost* 2005; **3**: 2598–2599.
- Green P, Hill M, Bowen DJUK Haemophilia Centre Doctors' Organisation Haemophilia Genetics Network. Duplications involving int22h-1 of the factor VIII gene: a cause for concern in genetic testing for hemophilia A? *Thromb Haemost* 2007; **5**: 2155–2156.
- El-Hattab AW, Fang P, Jin W *et al*: Int22h-1/int22h-2-mediated Xq28 rearrangements: intellectual disability associated with duplications and *in utero* male lethality with deletions. *J Med Genet* 2011; **48**: 840–850.
- Hu XY, Burghes AH, Ray PN, Thompson MW, Murphy EG, Worton RG: Partial gene duplication in Duchenne and Becker muscular dystrophies. *J Med Genet* 1988; **25**: 369–376.
- Murru S, Casula L, Pecorara M, Mori P, Cao A, Pirastu M: Illegitimate recombination produced a duplication within the FVIII gene in a patient with mild hemophilia A. *Genomics* 1990; **7**: 115–1158.
- Allen RC, Zoghbi HY, Moseley AB, Rosenblatt HM, Belmont JW: Methylation of HpaII and HhaI sites near the polymorphic CAG repeat in the human Androgen-receptor gene correlates with X chromosome inactivation. *Am J Hum Genet* 1999; **51**: 1229–1239.
- Sharp A, Robinson D, Jacobs P: Age- and tissue-specific variation of X chromosome inactivation ratios in normal women. *Hum Genet* 2000; **107**: 343–349.
- Giannandrea M, Bianchi V, Mignogna ML *et al*: Mutations in the small GTPase gene RAB39B are responsible for X-linked mental retardation associated with autism, epilepsy, and macrocephaly. *Am J Hum Genet* 2010; **86**: 185–195.
- Pegoraro E, Whitaker J, Mowery-Rushton P, Surti U, Lanasa M, Hoffman EP: Familial skewed X inactivation: a molecular trait associated with high spontaneous abortion rate maps to Xq28. *Am J Hum Genet* 1997; **61**: 160–170.
- Koolen DA, Pfundt R, de Leeuw N *et al*: Genomic microarrays in mental retardation: a practical workflow for diagnostic applications. *Hum Mutat* 2009; **30**: 283–292.
- Andrikovics H, Klein I, Bors A *et al*: Analysis of large structural changes of the factor VIII gene, involving intron 1 and 22, in severe hemophilia A. *Haematologica* 2003; **88**: 778–784.
- Arruda VR, Pieneman WC, Reitsma PH *et al*: Eleven novel mutations in the factor VIII gene from Brazilian hemophilia A patients. *Blood* 1995; **86**: 3015–3020.
- Windsor S, Taylor SA, Lillicrap D: Direct detection of a common inversion mutation in the genetic diagnosis of severe hemophilia A. *Blood* 1994; **84**: 2202–2205.
- Zimmermann MA, Oldenburg J, Müller CR, Rost S: Unusual genomic rearrangements in introns 1 and 22 of the F8 gene. *Haemostaseologie* 2011; **31**: Suppl 1 S69–S73.
- Yamazaki E, Mohri H, Inaba H, Harano H, Kanamori H, Okubo T: Variant of intron 22 inversions in the factor VIII gene in severe hemophilia A. *Blood Coagul Fibrinolysis* 1997; **8**: 445–449.
- Enayat MS, Theophilus BD, Williams MD, Hill FG: Another unique variant pattern of intron 22 rearrangement in factor VIII gene seen in a hemophilia A family. *Blood* 1995; **85**: 2639.
- Rossier JP, Young M, Kimberland ML *et al*: Factor VIII gene inversions causing severe hemophilia A originate almost exclusively in male germ cell. *Hum Mol Genet* 1994; **3**: 1035–1039.