



HHS Public Access

Author manuscript

Nat Commun. Author manuscript; available in PMC 2014 January 17.

Published in final edited form as:

Nat Commun. 2013 ; 4: 2186. doi:10.1038/ncomms3186.

Two *FLX* family members are non-redundantly required to establish the vernalization requirement in *Arabidopsis*

Joohyun Lee¹ and Richard M. Amasino^{1,*}

¹Department of Biochemistry, University of Wisconsin-Madison, 433 Babcock Drive, Madison, WI 53706, USA.

Abstract

Studies of natural genetic variation for the vernalization requirement in *Arabidopsis* have revealed two genes, *FRIGIDA* (*FRI*) and *FLOWERING LOCUS C* (*FLC*), that are determinants of the vernalization-requiring, winter-annual habit. In this study, we show that *FLC EXPRESSOR LIKE 4* (*FLL4*) is essential for up-regulation of *FLC* in winter-annual *Arabidopsis* accessions and establishment of a vernalization requirement. *FLL4* is part of the *FLC EXPRESSOR* (*FLX*) gene family and both are non-redundantly involved in flowering-time control. Epistasis analysis among *FRI*, *FLL4*, *FLX* and autonomous-pathway genes reveals that *FRI fve* exhibits an extreme delay of flowering compared to *fri fve*, but mutants in other autonomous-pathway genes do not, indicating that *FVE* acts most antagonistically to *FRI*. *FLL4* may represent a new member of a *FRI*-containing complex that activates *FLC*.

Introduction

Arabidopsis thaliana has been used as a model for studying flowering-time regulation. Major environmental inputs that induce flowering in *Arabidopsis* and many other plant species are prolonged exposure to cold (vernalization) and photoperiod. There are two types of *Arabidopsis* accessions, summer-annual and winter-annual. Summer-annual accessions flower rapidly without vernalization, whereas winter-annual accessions require vernalization for rapid flowering¹. Studies of natural genetic variation have revealed two genes, *FRIGIDA* (*FRI*) and *FLOWERING LOCUS C* (*FLC*), that are determinants of the winter-annual habit^{2, 3}. *FLC* encodes a MADS-box transcription factor that suppresses flowering⁴, and *FRI* encodes a nuclear protein containing coiled-coil domains⁵. *FRI* is essential for *FLC* expression to be sufficiently high to repress flowering in the fall⁶. During vernalization, *FLC* is repressed, resulting in plants which flower in the spring^{4, 7}. Summer-annual accessions typically contain naturally occurring mutations in *FRI*, resulting in attenuated *FLC* expression such that flowering occurs without vernalization^{6, 8}.

Users may view, print, copy, download and text and data- mine the content in such documents, for the purposes of academic research, subject always to the full Conditions of use: http://www.nature.com/authors/editorial_policies/license.html#terms

*Correspondence and requests for materials should be addressed to R.M.A. (amasino@biochem.wisc.edu, phone: 608-265-2170).

Author contribution

J.L. performed experiments. J.L. and R.M.A designed the experiments and wrote the paper.

Competing financial interests

The authors declare no competing financial interests.

In addition to *FRI*, a range of genes have been identified that are required for the elevated *FLC* expression that confers a winter-annual habit⁹. Some of these genes encode proteins involved generally in chromatin modification and RNA processing. Therefore, loss of these genes results in both a rapid flowering phenotype due to loss of *FLC* activation and pleiotropic phenotypes due to misregulation of other genes. This class includes components of the RNA Polymerase II-associated factor 1 (PAF1) complex (*VERNALIZATION INDEPENDENCE 3 (VIP3)*, *VIP4*, *EARLY FLOWERING 7(ELF7)*, *ELF8*)^{10, 11, 12}, a histone H3K36 methyltransferase (*EARLY FLOWERING IN SHORT DAYS (EFS)*)¹³, histone H3K4 methyltransferases (*ARABIDOPSIS TRITHORAX-LIKE 1 (ATX1)*, *ATX2* and *ATX-RELATED 7 (ATXR7)*)^{14, 15}, a SWR1-related, nucleosome-remodeling factor (*PHOTOPERIOD INDEPENDENT EARLY 1(PIE1)*, *ACTIN-RELATED PROTEIN 4 (ARP4)*, *SUPPRESSOR OF FRIGIDA 3 (SUF3)/ARP6/EARLY IN SHORT DAYS 1 (ESD1)*)^{16, 17, 18, 19}, RNA-processing factors (*SERRATE* and *HUA2*)^{20, 21} and a mRNA cap-binding protein (*ABA HYPERSENSITIVE 1(ABH1)/CAP BINDING PROTEIN 80 (CBP80)*)²².

In contrast to general regulators for which mutations have pleiotropic effects, mutations in other regulators of *FLC* affect only flowering and thus might be specific to the vernalization system. One example is *FRI*, which by genome-wide expression analyses, affects only *FLC* expression⁸. Several mutations in other genes caused rapid flowering by attenuating *FLC* expression without pleiotropic effects^{23, 24, 25, 26, 27}. A recent study indicates that the proteins encoded by all of these are members of a multimeric *FRI* complex²³; liquid chromatography-tandem mass spectrometry (LC-MS/MS) using 35S-myc:*FRI* identified *FRIGIDA LIKE 1 (FRL1)*, *FRIGIDA ESSENTIAL 1 (FES1)*, *SUPPRESSOR OF FRIGIDA 4 (SUF4)* and *FLC EXPRESSOR (FLX)*²³ as associated with *FRI*.

One of *FRI* complex components, *FLX*, is a member of a five-gene family containing *FLX*, *FLX LIKE 1 (FLL1)*, *FLL2*, *FLL3* and *FLL4*²³. Although only *FLX* was identified as a *FRI* complex component using LC-MS/MS, the other family members physically interact with *FRI* in yeast two-hybrid assay²³. Furthermore, yeast one-hybrid assays indicated that *FLX* and *FLL1* have transcriptional activity. However, it is not known whether other *FLX* family members play a role in activating *FLC*.

In addition to the *FLC* activators discussed above, genetic screens have identified several vernalization-insensitive mutants which encode *FLC* repressors that participate in the vernalization pathway such as *VERNALIZATION INSENSITIVE 3 (VIN3)*, *VERNALIZATION 1 (VRN1)*, *VRN2* and *VIN3-LIKE 1 (VIL1)/VRN5*^{24, 25, 26, 27, 28}. These genes are required to epigenetically silence *FLC* expression via enriching H3K9 and/or H3K27 methylation of *FLC* chromatin. *VIN3* is specifically upregulated during cold exposure, and *VIN3* expression is rapidly extinguished after plants are returned to warm conditions²⁴.

Here, we report that a *FLX* family member, *FLL4*, is essential for *FLC* up-regulation in winter-annual accessions. Furthermore, we show that only two *FLX* family members, *FLX* and *FLL4* are non-redundantly involved in flowering-time control. Finally, we show that

some putative FRI complex components play a role in flowering-time control in the absence of a FRI. Our findings reveal further molecular insight into the control of vernalization.

Results

Two suppressors alter *VIN3* and *FLC* expression without cold

Previous studies have reported the identification of mutants that suppress the delayed flowering that occurs in the absence of vernalization in the line Col *FRI*, which was generated by introgression of functional *Sf-2 FRIGIDA* allele^{4, 29}. We screened additional ethyl methane sulfonate (EMS)-generated mutants in Col *FRI* for rapid-flowering lines that exhibited two properties of vernalized Arabidopsis plants in the absence of cold exposure: reduced *FLC* expression and increased *VIN3* expression. In wild-type, *VIN3* is expressed only after a relatively long period of cold exposure²⁴. From 98 lines initially identified as rapid-flowering, we found two independent mutants that exhibited both reduced *FLC* expression and increased *VIN3* expression. These mutants, which we now refer to as *flx-3* and *flx like 4-1 (fll4-1)* (Fig. 1a, b) were chosen for further study because they appeared identical to Col and to vernalized Col *FRI* (Fig. 1c)—i.e., there were no apparent pleiotropic phenotypes and they exhibited features of vernalized plants in the absence of cold exposure.

Mutations in *FLL4* and *FLX* give rise to suppressor phenotypes

To map the location of the genes responsible for the rapid-flowering phenotype of the two mutants that exhibited vernalization-independent increased *VIN3* and decreased *FLC* expression, the mutants were crossed with a line in which *FRI FLC* had been introgressed into the Landsberg *erecta (Ler)* genetic background⁴. The F1 generations exhibited delayed flowering, and in the F2 generations, delayed to rapid flowering clearly segregated in a 3 to 1 manner indicating that in each line rapid flowering was a single-gene, recessive trait.

The locations of the mutations were mapped in the F2 generations using a combination of SSLP and dCAPs markers which are polymorphic between Col-0 and *Ler*³⁰. One mutation was narrowed down to an interval between 24.78 MB and 24.91 MB on chromosome 5. Sequence analysis of this interval revealed a nonsense mutation in the first exon of *AT5g61920*, *FLC EXPRESSOR LIKE 4 (FLL4)* (Supplementary Fig. S1a). *FLL4* had not previously been identified as being involved in flowering-time control.

The other mutation mapped on the lower arm of chromosome 2 around 12.09 MB. This region contained a gene known as *FLC EXPRESSOR (FLX)* which had previously been identified as a suppressor of *FRI/FLC*-mediated delayed flowering^{23, 31}. Further mapping and sequencing analysis identified that this suppressor line contained a single-base change in the first exon of *AT2G30120/FLX* that resulted in the conversion of an arginine to a lysine residue at amino acid position 176 (Supplementary Fig. S1b). This arginine is conserved among all *FLX* family members (Supplementary Fig. S2).

To simultaneously evaluate whether the rapid-flowering phenotype of the mutants is indeed caused by mutations in *FLL4* and *FLX* and whether there are any effects of overexpression, 35S-driven *FLL4* and *FLX* were transformed into the respective mutant lines and the phenotype assessed. Introduction of 35S-driven *FLL4* in *fll4-1* and 35S-driven *FLX* in *flx-3*

rescued the mutant phenotype in all 12 lines examined for 35S::FLL4 and all 9 lines examined for 35S::FLX (Fig. 2). Also, the *flx* suppressor was crossed to another *flx* allele (*flx-2*) that has been previously described²³. The F1 plants retained the mutant phenotype indicating that we had identified another allele of *FLX* which we designate *flx-3* (Fig. 2).

Suppression of delayed flowering does not require VIN3

As discussed above, the *fl4* and *flx* suppressors were chosen for further study because they exhibited both increased *VIN3* expression, reduced *FLC* expression, and rapid flowering in the absence of cold exposure. To determine whether the *FLC* suppression and rapid flowering of *fl4* and *flx* is dependent on cold-independent *VIN3* expression, we generated *FRI fl4 vin3*, *FRI flx vin3*, and *FRI fl4 flx vin3* and measured flowering time in these lines (Fig. 3). There is no difference in the level of suppression of *FRI FLC*-mediated delayed flowering when *VIN3* is present or absent in long days (Fig. 3a, b) or short days (Fig. 3c); thus, *fl4* and *flx* suppression of *FRI FLC*-delayed flowering does not require *VIN3*.

Lesions in other FLX family members do not affect flowering

The Arabidopsis genome contains 5 *FLX* family members. The *FLX* family is plant specific and does not appear to share any motifs with other proteins. Among the 5 members, *FLL4* and *FLX* proteins share 30% identity, and 50% similarity. *FLX LIKE 1* (*FLL1*), *FLX LIKE 2* (*FLL2*), *FLX LIKE 3* (*FLL3*) each have 38%, 26% and 29% identities, and 63%, 41% and 50% similarities with *FLX*, respectively (Supplementary Fig. S2).

To determine whether lesions in other *FLX* family members can suppress *FRI*-mediated delayed flowering similar to the suppression caused by *fl4* and *flx* mutants, *fl1*, *fl2* and *fl3* mutants were crossed with Col *FRI* and, from the resulting F2 generation, the flowering behavior of homozygous mutants in the presence of *FRI* was determined. Mutations in these other *FLX* family members have no effect on flowering (Supplementary Fig. S3) as also noted by Choi et al.²³. Thus, based on single mutant analysis, only 2 members, *FLL4* and *FLX*, appear to be necessary for the winter-annual flowering habit. It is, however, possible that other family members have redundant function and that double mutants could have a flowering phenotype.

FLL4 and FLX have non-redundant roles in flowering

Because only *FLX* has transcriptional activity in a yeast one-hybrid assay, Choi et al.²³ speculated that *FLX* is the only protein among the 5 *FLX* family members involved in *FRI/FLC*-mediated flowering-time control. However, Choi et al.²³ also showed that all *FLX* family members interact with *FRI* in a yeast two-hybrid assay. Our results clearly show that both *FLL4* and *FLX* have a role in flowering-time control. We took two approaches to determine whether the roles of *FLL4* and *FLX* are redundant or non-redundant. First, we generated *fl4* and *flx* double mutants in the *FRI* background. If *FLL4* and *FLX* both contributed an identical dosage-dependent protein function (redundant roles), then a double mutant might be expected to flower earlier than the single mutants. However, *flx-2/fl4-1* and *flx-3/fl4-1* double mutants were identical with respect to flowering to the single mutants *flx-2* or *flx-3* and *fl4-1* in the *FRI* background under both long days (Fig. 4a) and short days (Fig. 4b). Additionally, the double mutants did not exhibit a further decrease of *FLC*

expression (Fig. 4c). These data are consistent with non-redundant roles in for FLX and FLL4 in flowering time control.

The double mutant analyses, however, cannot rule out a model in which FLL4 and FLX do have redundant roles, but that single mutants drop below the threshold of activity required for the *FRI/FLC*-mediated delay of flowering. In this case, a double heterozygote would be expected to behave like a homozygous single *fl4* or *flx* mutant. However, the double heterozygote *flx-3 FLX*; *fl4-1 FLL4* in the *FRI* background flowers identical to wild type under both long days (Fig. 4a) and short days (Fig. 4b) arguing against redundancy and a threshold model.

A second approach to address the question of possible redundancy is to overexpress *FLL4* in the *flx* background and to overexpress *FLX* in the *fl4* background; overexpression of one gene rescuing the mutant phenotype of the other would be consistent with redundancy. Overexpression of *FLL4* in *flx-3* and overexpression of *FLX* in *fl4-1* did not rescue the mutant phenotype in long days (Fig. 4a) and short days (Fig. 4b). The overexpression constructs are functional because the *FLL4* overexpression construct rescues the *fl4-1* mutant and the *FLX* overexpression construct rescues the *flx-3* mutant (Fig. 2).

No additive phenotype of *fl4* and *flx* with *fri* and *frl1*

We previously reported that a *FRI* family member, *FRIGIDA LIKE 1 (FRL1)*, has a non-redundant role with *FRI* in the establishment of the winter-annual habit³². When either gene is mutated, the winter-annual habit is lost because *FLC* expression is attenuated.

To evaluate whether there is an additive flowering phenotype in the *fri* and *frl1*, and *fl4* and *flx* mutants, the phenotype of *fri FRL1 fl4*, *fri FRL1 flx*, *FRI frl1 fl4*, *FRI frl1 flx* and *fri FRL1 fl4 flx* was assessed in long days and short days (Fig. 5a, b). The flowering time of the mutants tested did not show additive flowering suppression relative to the single *FRI* complex component mutants. These data are consistent with FLL4, FLX, FRI and FRL1 all playing critical non-redundant roles in the *FRI* complex.

fl4* and *flx* suppress the delayed flowering of *fve* and *ld

Andersson *et al.*³¹ reported *FLX* as a flowering regulator based on the mutant phenotype in the C24 accession. A T-DNA knock out mutant, *flx-1*, repressed *FLC* expression, resulting in plants that flower earlier than C24 wild type. In this study, it was reported that *FLX* was not necessary for *FLC* activation when certain autonomous-pathway genes were down regulated. Furthermore, because FLX is part of the *FRI* complex (Choi *et al.*, 2011)²³, and *FRI* is not required for the delayed-flowering phenotype of autonomous-pathway mutants, it might be expected that loss of *FLX* or *FLL4* would not affect the phenotype of autonomous-pathway mutants.

We determined whether *fl4* or *flx* mutations could suppress the delayed flowering that results from loss of function of autonomous-pathway genes, *FPA*³³, *FCA*^{34, 35}, *FLOWERING LOCUS D (FLD)*^{36, 37}, *LUMINIDEPENDENS (LD)*³ and *FVE*³⁸. Accordingly double mutants were made between *fpa-3*, *fca-9*, *fld-3*, *ld-1* and *fve-4* and *flx-3* and *fl4-1*. The delayed flowering of autonomous-pathway mutants *fpa*, *fca* and *fld* was not suppressed

by mutation of either *flh4* or *flx* (Fig. 6a). However, the delayed flowering of *ld* and *fve* was suppressed by *flh4* and *flx* mutations (Fig. 6a). The *ld* suppression was partial (compare *fri*, *ld*, *flx* or *fri*, *ld*, *flh4* to *fri* alone), but the *fve* suppression was almost complete. *FLC* expression of the mutant lines was also monitored to determine if the flowering phenotype is a result of reduced *FLC* expression. As shown in Fig. 6b, loss of *FLL4* and *FLX* suppresses delayed flowering of *ld* and *fve* via attenuating *FLC* expression (Fig. 6b). A suppression of the delayed flowering of and *FLC* mRNA levels in *ld* and *fve* also results from lesions in *SUF4*³⁹.

We further tested whether loss of other *FRI* complex components can suppress the delayed flowering of *fve*. Interestingly, loss of *FRL1*, *FES1* and *SUF4* also caused a strong suppression of the delayed flowering of *fve* (Supplementary Fig. S4).

Antagonistic roles of *FRI* and *FVE*

To explore the relationship between *FVE* and the *FRI* complex, we compared the flowering time of *fve* and certain other autonomous-pathway mutants with or without *FRI*. Interestingly, *FRI fve* exhibits a more extreme delay of flowering compared to *fri fve*, whereas other autonomous-pathway mutants *fld*, *ld*, *fca* and *fpa* did not exhibit such a large difference with or without *FRI* (Fig. 6c). The flowering time of autonomous mutants with or without *FRI* was also correlated with their *FLC* expression level (Fig. 6d). These data are consistent with a model in which *FRI* and *FVE* are acting oppositely on a similar molecular aspect of *FLC* regulation. *FVE* is thought to act by reducing the levels of histone acetylation^{38, 40}, which would attenuate *FLC* expression. *FRI* increases the levels of *FLC* histone modifications that promote active chromatin^{13, 23}. Thus the opposing activities of *FRI* and *FVE* may be at the level of chromatin modification at the *FLC* locus. In the absence of *FVE* function, *FRI* activity might result in a “hyper activated” chromatin state at *FLC* which is reflected in strongly delayed flowering and increased *FLC* mRNA levels.

In a *FRI* background, loss of one of many putative *FRI* components is sufficient to reduce *FLC* expression to levels as low as those in rapid-cycling wild types that lack *FRI*^{32, 39, 41}. As discussed above, however, loss of *FVE* provides a “sensitized” background in which *FRI* causes a stronger delay in flowering. To further explore the roles of *FLL4* and *FLX* in this sensitized background, we made double, triple and quadruple mutants among *fri*, *fve*, *flh4* and *flx*. First, we compared the flowering behavior of *fve flh4*, *fve flx* and *fve flh4 flx* with or without *FRI*. The flowering of *FRI fve flh4* and *FRI fve flx* was delayed compared to *fri fve flh4* and *fri fve flx* (Fig. 7a). Thus, in the sensitized *fve* background, *FRI* causes a modest delay of flowering, in the absence of *FLL4* or *FLX*. We also investigated the effect of these genetic combinations on *FLC* expression. The flowering behaviors were clearly correlated with *FLC* expression (Fig. 7b). These data indicate that the ability of *FRI* to delay flowering in the absence of *FLL4* or *FLX* is mediated via *FLC* expression.

We also investigated whether or not *FRI* has activity when other putative complex components are mutated in the *fve* background (Fig. 7c). The flowering time of *FRI fve fri1*, *FRI fve fes1* and *FRI fve suf4* was further delayed compared to *fri fve fri1*, *fri fve fes1* and *fri*

fve suf4, respectively. Thus, as was the case with *flh4* and *flx*, *FRI* can cause a modest delay of flowering in the absence of *FES1*, *FRL1* and *SUF4* when *FVE* is lacking.

Discussion

Our results demonstrate that two *FLX* family members, *FLL4* and *FLX*, have non-redundant roles in *FLC* activation and the establishment of a vernalization requirement. *FLL4* and *FLX* appear to be in the same flowering “pathway” because *flh4* and *flx* single mutants fully suppress the delayed flowering of a *FRI*-containing winter-annual line and the double mutant did not show any additional flowering-time change compared to the single mutants (Fig 4a, b). That *FLL4* and *FLX* have non-redundant roles in flowering is supported by the following evidence. First, as noted above, the *flh4 flx* double mutant has a phenotype identical to the single mutants. If there were redundancy, then the double mutant would be expected to have a more severe phenotype than the single mutants unless both single and double mutants fell below a threshold level of activity required to delay flowering. However, there is no flowering phenotype in the double heterozygote, *flh4-1 FLL4; flx-3 FLX*, arguing against a threshold model. Further evidence that *FLL4* and *FLX* have non-redundant roles is that overexpression of *FLX* does not rescue a *flh4* mutant and overexpression of *FLL4* does not rescue a *flx* mutant.

A model that accounts for non-redundancy, but similar function, is that both *FLL4* and *FLX* are non-redundant members of a protein complex. This model is consistent with the results of Choi et. al.²³ who showed that *FRI* and *FLX* are part of a multisubunit complex (the *FRI* complex) that is involved in *FLC* up-regulation. In a yeast two-hybrid assay, Choi et. al.²³ showed that all *FLX* family members can interact with *FRI*. Our results indicate that a fully functional *FRI* complex requires both *FLX* and *FLL4*.

It is intriguing that studies of the molecular basis of the vernalization requirement in Arabidopsis reveal at least two examples of the involvement of non-redundant members of a gene family. Specifically, both *FRI* and the *FRI* family members *FRL1* or *FRL2*^{32, 42} and, as shown in this study, both *FLX* and the *FLX* family member *FLL4* are necessary to create a vernalization requirement. The *FRI* and *FLX* gene families are present in all sequenced plant genomes including tropical species that do not have a vernalization requirement, and vernalization systems appear to have evolved independently and relatively recently in different plant lineages as an adaptation to temperate climates⁹. Thus, vernalization was not likely to be the ancestral role of the founding members of these gene families. If the ancestral role of such genes involved multimerization, then gene duplication could permit an additional copy to encode a protein that continues to function in the multimer complex along with the original member, and this would permit a version of the complex to diverge such that the diverging complex could assume a new function such as elevating *FLC* expression to create a vernalization requirement. Consistent with this evolutionary path to a vernalization requirement, *FLX*, *FRI* and *FRL1* reside in the same *FRI* complex²³ and it is likely that *FLL4* will be found in this complex as well.

There are some intriguing differences in phenotype when different autonomous-pathway mutants are combined with *FRI*. *FRI fve* exhibits an extreme delay of flowering compared to

fri fve, but *FRI fld*, *FRI ld*, *FRI fca* and *FRI fpa* do not, and the flowering time of these genotypes correlates with their *FLC* expression (Fig. 6a,b). *FVE* is an Arabidopsis homolog of the human histone-binding proteins *Retinoblastoma-Associated protein 46* and *48*. As a component of a histone deacetylase (HDAC) complex, *FVE* has been shown to be involved in a vernalization-independent system of *FLC* repression^{38, 40, 43, 44, 45}. Thus, perhaps the *FRI* complex and its components such as *FLL4* and *FLX* act antagonistically to *FVE* by increasing histone acetylation at *FLC*. Antagonistic functions would account for the strong delay of flowering caused by *FRI* in the *fve* mutant. Interestingly, it has been reported that the product of the autonomous-pathway gene *FLD* is also part of an *FVE*-containing HDAC complex^{43, 44, 45}. However, our result that *FRI fld* does not exhibit the enhanced delayed flowering exhibited in *FRI fve* indicates that *FVE* and *FLD* act in separate pathways. This is consistent with previous reports that *FVE* functions independently of *FCA*, *FPA* and *FLD* to repress *FLC* expression via various loss/gain of function mutant series^{37, 46}.

It is also intriguing that, in the absence of *FRI*, *flh4* and *flx* mutants strongly suppress the delayed flowering of *fve* and, to a lesser extent, that of *ld*, but loss of *FLL4* and *FLX* does not have a strong suppressive effect on other autonomous-pathway mutants. This could indicate that *FLL4* and *FLX* have a function that is independent of the *FRI* complex if the complex was completely non-functional in the absence of any components. Alternatively, in a “sensitized” *fve* mutant background, the *FRI* complex might have residual *FLC*-promoting activity in the absence of *FRI*, and loss of *FLL4* or *FLX* would attenuate this residual activity. This residual activity of the *FRI* complex without *FRI* would be consistent with the evolutionary model, noted above, of *FRI* evolving a role of “hyperactivating” *FLC* to create a vernalization requirement; for example, there may have been a precursor complex to the current *FRI* complex that had moderate *FLC*-promoting activity. An *in vitro* system to study the interaction of *FRI* complex components and *FVE* with *FLC* would be useful to investigate this model.

Methods

Plant Materials and Growth Conditions

The wild-type Arabidopsis plants used in this study were either wild type Columbia (Col/*fri*) or a *FRI* introgression line (Col *FRI*)^{4, 29}. Seeds were sown on Petri-plates containing 2 mM MES at pH 5.7, 0.8% (w/v) Phytoblend agar (Caisson Lab, North Logan, UT) and 0.65 gL⁻¹ Peter’s Excel 15-5-15 CalMag fertilizer. Plated seeds were not stratified and plants were transferred to soil. Plants were grown in Metro-Mix 360 (SUN GRO Horticulture) and fertilized with Peters Excel CalMag (15-5-15) at regular intervals in short days (8 hr lights/16 hr dark), long days (16 hr lights/8 hr dark), or continuous light from cool-white fluorescent tubes (PPFD approximately 60–70 $\mu\text{mol m}^{-2} \text{s}^{-1}$). For vernalization experiments, seedlings on agar were incubated at 4 °C in short days and transferred to soil after cold exposure.

Gene expression analysis

Total RNA was isolated from seedlings using TRIZOL reagent (Invitrogen) according to the manufacturer’s instructions, and treated with RQ1 RNase-Free DNase (Promega). DNA-free

RNA was used to generate cDNA using qScript cDNA SuperMix (Quanta Biosciences). After preparation of cDNA, quantitative real time PCR was performed using Applied Biosystems 7500 Fast Real-Time PCR System. Ubiquitin 10 was used as an internal control. All primers used are listed in Supplementary Table S1.

Gene sequences and mutants

All sequence data in this article can be found in GenBank Nucleotide Core under the following accession numbers: AT4G00650 (*FRI*), AT5G10140 (*FLC*), AT5G57380 (*VIN3*), At2g30120 (*FLX*), At3g14750 (*FLL1*), At1g67170 (*FLL2*), At1g55170 (*FLL3*) and At5g61920 (*FLL4*). The mutant lines described in this manuscript are: *elf7-2*¹⁵, *elf8-1*¹², *efs-3*¹³, *flx-2*²³, *fll1-1* (SALK_139524), *fll2-1* (CS822746), *fll3-1* (SALK_002678), *vin3*²⁴, *fll1-1*³², *fpa-7*⁴⁷, *fca-9*²², *fld-3*⁴⁸, *ld-1*⁴⁹, *fve-4*⁴⁷, *fes1-1*⁴¹, *suf4*³⁹.

Constructs

For *35S::FLL4* and *35S::FLX*, the coding regions of *FLL4* and *FLX* were amplified by PCR, and cloned into D-TOPO entry vectors (Invitrogen) and then moved into pGWB502 vectors (kindly provided from Dr. Tsuyoshi Nakagawa) using the Gateway cloning system (Invitrogen)⁵⁰. All primers used are listed in Supplementary Table S1.

Supplementary Material

Refer to Web version on PubMed Central for supplementary material.

Acknowledgements

We thank Donna Fernandez and all members of the Amasino lab for useful discussions. Work in RMA's laboratory was supported by the College of Agricultural and Life Sciences, the Graduate School of the University of Wisconsin, and National Institute of Health grant 1R01GM079525.

References

1. Napp-Zinn K. On the genetical basis of vernalization requirement in *Arabidopsis thaliana* (L.). Heynh. La Physiologie de la Floraison. (Colloques Internationaux du Centre National de la Recherche Scientifique). 1979
2. Koornneef M, Blankestijn-de Vries H, Hanhart C, Soppe W, Peeters T. The phenotype of some late-flowering mutants is enhanced by a locus on chromosome 5 that is not effective in the Landsberg erecta wild-type. *Plant J.* 1994; 6:911–919.
3. Lee I, Aukerman MJ, Gore SL, Lohman KN, Michaels SD, Weaver LM, et al. Isolation of LUMINIDEPENDENS: a gene involved in the control of flowering time in *Arabidopsis*. *Plant Cell.* 1994; 6:75–83. [PubMed: 7907507]
4. Michaels SD, Amasino RM. FLOWERING LOCUS C encodes a novel MADS domain protein that acts as a repressor of flowering. *Plant Cell.* 1999; 11:949–956. [PubMed: 10330478]
5. Geraldo N, Baurle I, Kidou S, Hu X, Dean C. FRIGIDA delays flowering in *Arabidopsis* via a cotranscriptional mechanism involving direct interaction with the nuclear cap-binding complex. *Plant Physiol.* 2009; 150:1611–1618. [PubMed: 19429606]
6. Johanson U, West J, Lister C, Michaels S, Amasino R, Dean C. Molecular analysis of FRIGIDA, a major determinant of natural variation in *Arabidopsis* flowering time. *Science.* 2000; 290:344–347. [PubMed: 11030654]

7. Sheldon CC, Burn JE, Perez PP, Metzger J, Edwards JA, Peacock WJ, et al. The FLF MADS box gene: a repressor of flowering in Arabidopsis regulated by vernalization and methylation. *Plant Cell*. 1999; 11:445–458. [PubMed: 10072403]
8. Werner JD, Borevitz JO, Uhlenhaut NH, Ecker JR, Chory J, Weigel D. FRIGIDA-independent variation in flowering time of natural Arabidopsis thaliana accessions. *Genetics*. 2005; 170:1197–1207. [PubMed: 15911588]
9. Amasino RM, Michaels SD. The timing of flowering. *Plant Physiol*. 2010; 154:516–520. [PubMed: 20921176]
10. Zhang H, van Nocker S. The VERNALIZATION INDEPENDENCE 4 gene encodes a novel regulator of FLOWERING LOCUS C. *Plant J*. 2002; 31:663–673. [PubMed: 12207655]
11. Zhang H, Ransom C, Ludwig P, van Nocker S. Genetic analysis of early flowering mutants in Arabidopsis defines a class of pleiotropic developmental regulator required for expression of the flowering-time switch flowering locus C. *Genetics*. 2003; 164:347–358. [PubMed: 12750345]
12. He YH, Doyle MR, Amasino RM. PAF1-complex-mediated histone methylation of FLOWERING LOCUS C chromatin required for the vernalization-responsive, winterannual habit in Arabidopsis. *Gene Dev*. 2004; 18:2774–2784. [PubMed: 15520273]
13. Kim SY, He YH, Jacob Y, Noh YS, Michaels S, Amasino R. Establishment of the vernalization-responsive, winter-annual habit in Arabidopsis requires a putative histone H3 methyl transferase. *Plant Cell*. 2005; 17:3301–3310. [PubMed: 16258034]
14. Saleh A, Alvarez-Venegas R, Yilmaz M, Le O, Hou GC, Sadler M, et al. The highly similar Arabidopsis homologs of trithorax ATX1 and ATX2 encode proteins with divergent biochemical functions. *Plant Cell*. 2008; 20:568–579. [PubMed: 18375658]
15. Tamada Y, Yun JY, Woo SC, Amasino RM. ARABIDOPSIS TRITHORAXRELATED7 Is Required for Methylation of Lysine 4 of Histone H3 and for Transcriptional Activation of FLOWERING LOCUS C. *Plant Cell*. 2009; 21:3257–3269. [PubMed: 19855050]
16. Martin-Trillo M, Lazaro A, Poethig RS, Gomez-Mena C, Pineiro MA, Martinez-Zapater JM, et al. EARLY IN SHORT DAYS 1 (ESD1) encodes ACTIN-RELATED PROTEIN 6 (AtARP6), a putative component of chromatin remodelling complexes that positively regulates FLC accumulation in Arabidopsis. *Development*. 2006; 133:1241–1252. [PubMed: 16495307]
17. Choi K, Kim S, Kim SY, Kim M, Hyun Y, Lee H, et al. SUPPRESSOR OF FRIGIDA3 encodes a nuclear ACTIN-RELATED PROTEIN6 required for floral repression in Arabidopsis. *Plant Cell*. 2005; 17:2647–2660. [PubMed: 16155178]
18. Noh YS, Amasino RM. PIE1, an ISWI family gene, is required for FLC activation and floral repression in Arabidopsis. *Plant Cell*. 2003; 15:1671–1682. [PubMed: 12837955]
19. Kandasamy MK, Deal RB, McKinney EC, Meagher RB. Silencing the nuclear actinrelated protein AtARP4 in Arabidopsis has multiple effects on plant development, including early flowering and delayed floral senescence. *Plant J*. 2005; 41:845–858. [PubMed: 15743449]
20. Doyle MR, Bizzell CM, Keller MR, Michaels SD, Song JD, Noh YS, et al. HUA2 is required for the expression of floral repressors in Arabidopsis thaliana. *Plant J*. 2005; 41:376–385. [PubMed: 15659097]
21. Laubinger S, Sachsenberg T, Zeller G, Busch W, Lohmann JU, Ratsch G, et al. Dual roles of the nuclear cap-binding complex and SERRATE in pre-mRNA splicing and microRNA processing in Arabidopsis thaliana. *Proc Natl Acad Sci U S A*. 2008; 105:8795–8800. [PubMed: 18550839]
22. Bezerra IC, Michaels SD, Schomburg FM, Amasino RM. Lesions in the mRNA capbinding gene ABA HYPERSENSITIVE 1 suppress FRIGIDA-mediated delayed flowering in Arabidopsis. *Plant J*. 2004; 40:112–119. [PubMed: 15361145]
23. Choi K, Kim J, Hwang HJ, Kim S, Park C, Kim SY, et al. The FRIGIDA complex activates transcription of FLC, a strong flowering repressor in Arabidopsis, by recruiting chromatin modification factors. *Plant Cell*. 2011; 23:289–303. [PubMed: 21282526]
24. Sung S, Amasino RM. Vernalization in Arabidopsis thaliana is mediated by the PHD finger protein VIN3. *Nature*. 2004; 427:159–164. [PubMed: 14712276]
25. Bastow R, Mylne JS, Lister C, Lippman Z, Martienssen RA, Dean C. Vernalization requires epigenetic silencing of FLC by histone methylation. *Nature*. 2004; 427:164–167. [PubMed: 14712277]

26. Greb T, Mylne JS, Crevillen P, Geraldo N, An H, Gendall AR, et al. The PHD finger protein VRN5 functions in the epigenetic silencing of Arabidopsis FLC. *Curr. Biol.* 2007; 17:73–78. [PubMed: 17174094]
27. Sung S, He Y, Eshoo TW, Tamada Y, Johnson L, Nakahigashi K, et al. Epigenetic maintenance of the vernalized state in Arabidopsis thaliana requires LIKE HETEROCHROMATIN PROTEIN 1. *Nat. Genet.* 2006; 38:706–710. [PubMed: 16682972]
28. Gendall AR, Levy YY, Wilson A, Dean C. The VERNALIZATION 2 gene mediates the epigenetic regulation of vernalization in Arabidopsis. *Cell.* 2001; 107:525–535. [PubMed: 11719192]
29. Lee I, Amasino RM. Effect of Vernalization, Photoperiod, and Light Quality on the Flowering Phenotype of Arabidopsis Plants Containing the FRIGIDA Gene. *Plant Physiol.* 1995; 108:157–162. [PubMed: 12228459]
30. Jander G, Norris SR, Rounsley SD, Bush DF, Levin IM, Last RL. Arabidopsis mapbased cloning in the post-genome era. *Plant Physiol.* 2002; 129:440–450. [PubMed: 12068090]
31. Andersson CR, Helliwell CA, Bagnall DJ, Hughes TP, Finnegan EJ, Peacock WJ, et al. The FLX Gene of Arabidopsis is Required for FRI-Dependent Activation of FLC Expression. *Plant Cell Physiol.* 2008; 49:191–200. [PubMed: 18156133]
32. Michaels SD, Bezerra IC, Amasino RM. FRIGIDA-related genes are required for the winter-annual habit in Arabidopsis. *Proc. Natl. Acad. Sci. U S A.* 2004; 101:3281–3285. [PubMed: 14973192]
33. Baurle I, Smith L, Baulcombe DC, Dean C. Widespread role for the flowering-time regulators FCA and FPA in RNA-mediated chromatin silencing. *Science.* 2007; 318:109–112. [PubMed: 17916737]
34. Quesada V, Macknight R, Dean C, Simpson GG. Autoregulation of FCA pre-mRNA processing controls Arabidopsis flowering time. *EMBO J.* 2003; 22:3142–3152. [PubMed: 12805228]
35. Simpson GG, Dijkwel PP, Quesada V, Henderson I, Dean C. FY is an RNA 3' endprocessing factor that interacts with FCA to control the Arabidopsis floral transition. *Cell.* 2003; 113:777–787. [PubMed: 12809608]
36. Liu C, Zhou J, Bracha-Drori K, Yalovsky S, Ito T, Yu H. Specification of Arabidopsis floral meristem identity by repression of flowering time genes. *Development.* 2007; 134:1901–1910. [PubMed: 17428825]
37. Baurle I, Dean C. Differential interactions of the autonomous pathway RRM proteins and chromatin regulators in the silencing of Arabidopsis targets. *PLoS One.* 2008; 3:e2733. [PubMed: 18628965]
38. Ausin I, Alonso-Blanco C, Jarillo JA, Ruiz-Garcia L, Martinez-Zapater JM. Regulation of flowering time by FVE, a retinoblastoma-associated protein. *Nat. Genet.* 2004; 36:162–166. [PubMed: 14745447]
39. Kim S, Choi K, Park C, Hwang HJ, Lee I. SUPPRESSOR OF FRIGIDA4, encoding a C2H2-Type zinc finger protein, represses flowering by transcriptional activation of Arabidopsis FLOWERING LOCUS C. *Plant Cell.* 2006; 18:2985–2998. [PubMed: 17138694]
40. Kim HJ, Hyun Y, Park JY, Park MJ, Park MK, Kim MD, et al. A genetic link between cold responses and flowering time through FVE in Arabidopsis thaliana. *Nat. Genet.* 2004; 36:167–171. [PubMed: 14745450]
41. Schmitz RJ, Hong L, Michaels S, Amasino RM. FRIGIDA-ESSENTIAL 1 interacts genetically with FRIGIDA and FRIGIDA-LIKE 1 to promote the winter-annual habit of Arabidopsis thaliana. *Development.* 2005; 132:5471–5478. [PubMed: 16291783]
42. Schlappi MR. FRIGIDA LIKE 2 is a functional allele in Landsberg erecta and compensates for a nonsense allele of FRIGIDA LIKE 1. *Plant Physiol.* 2006; 142:1728–1738. [PubMed: 17056759]
43. Yu CW, Liu X, Luo M, Chen C, Lin X, Tian G, et al. HISTONE DEACETYLASE6 interacts with FLOWERING LOCUS D and regulates flowering in Arabidopsis. *Plant Physiol.* 2011; 156:173–184. [PubMed: 21398257]
44. Jiang D, Gu X, He Y. Establishment of the winter-annual growth habit via FRIGIDA-mediated histone methylation at FLOWERING LOCUS C in Arabidopsis. *Plant Cell.* 2009; 21:1733–1746. [PubMed: 19567704]

45. Gu X, Jiang D, Yang W, Jacob Y, Michaels SD, He Y. Arabidopsis homologs of retinoblastoma-associated protein 46/48 associate with a histone deacetylase to act redundantly in chromatin silencing. *PLoS Genet.* 2011; 7:e1002366. [PubMed: 22102827]
46. Liu F, Quesada V, Crevillen P, Baurle I, Swiezewski S, Dean C. The Arabidopsis RNA-binding protein FCA requires a lysine-specific demethylase 1 homolog to downregulate FLC. *Mol. Cell.* 2007; 28:398–407. [PubMed: 17996704]
47. Michaels SD, Amasino RM. Loss of FLOWERING LOCUS C activity eliminates the late-flowering phenotype of FRIGIDA and autonomous pathway mutations but not responsiveness to vernalization. *Plant Cell.* 2001; 13:935–941. [PubMed: 11283346]
48. He Y, Michaels SD, Amasino RM. Regulation of flowering time by histone acetylation in Arabidopsis. *Science.* 2003; 302:1751–1754. [PubMed: 14593187]
49. Redei GP. Supervital Mutants of Arabidopsis. *Genetics.* 1962; 47:443–460. [PubMed: 17248096]
50. Nakagawa T, Suzuki T, Murata S, Nakamura S, Hino T, Maeo K, et al. Improved Gateway binary vectors: high-performance vectors for creation of fusion constructs in transgenic analysis of plants. *Biosci. Biotechnol. Biochem.* 2007; 71:2095–2100. [PubMed: 17690442]

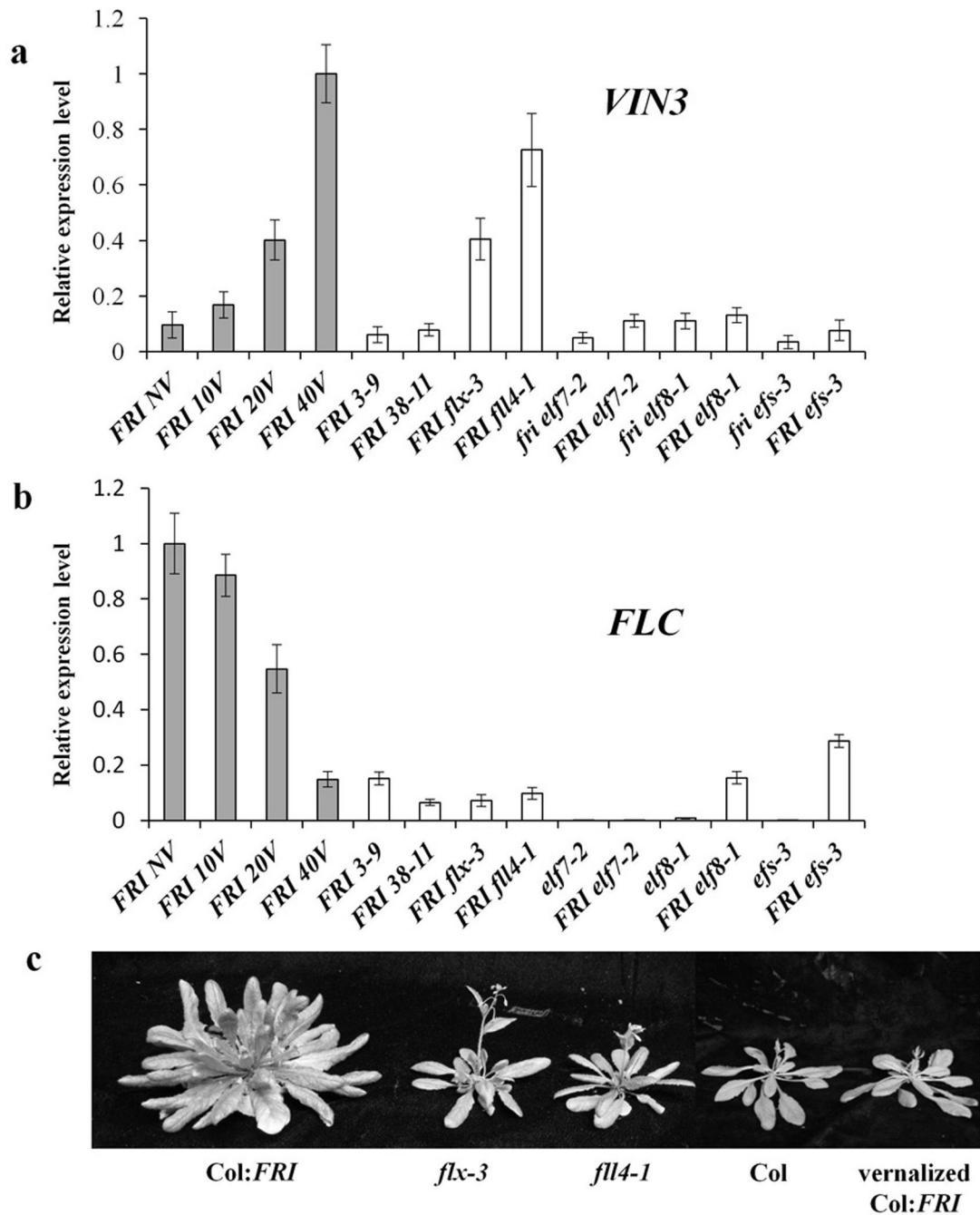


Figure 1. *flx-3* and *fl4-1* alter *VIN3* and *FLC* expression without cold
flx-3 and *fl4-1* exhibit *VIN3* up-regulation (a) and *FLC* down-regulation (b) without vernalization. *FRI 3-9* and *FRI 38-11* were selected as negative controls for *VIN3* expression from among the *FRI*-suppressor mutants we identified. *FLC* and *VIN3* expression were also monitored in *fri elf7-2*, *FRI elf7-2*, *fri elf8-1*, *FRI elf8-1*, *fri efs-3* and *FRI efs-3* as additional controls. (c) Flowering phenotype of *flx-3* and *fl4-1*. All of the expression data are presented as mean values of three biological replicates. Error bars indicate standard deviation.

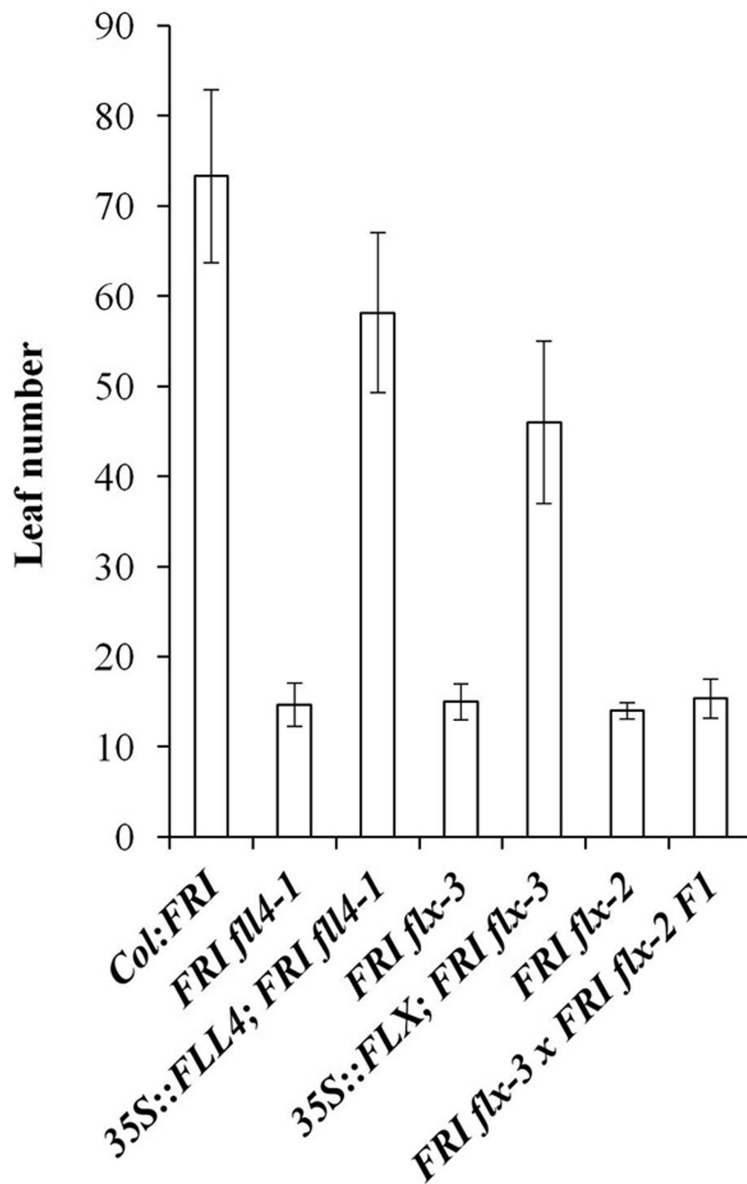


Figure 2. The rapid-flowering phenotype results from lesions in both *FLL4* and *FLX*
 Flowering behavior is represented by the number of rosette leaves formed on the primary stem prior to the transition to flowering of plants grown in long days without vernalization. Flowering was monitored in the transgenic lines to determine whether *FLL4* and *FLX* can rescue the flowering phenotype in *FRI fl4* and *FRI flx*. Flowering of *FRI flx-3* × *FRI flx-2* F1 was also monitored. All of the flowering time data are presented as mean values of 12 individual plants except *35S::FLX; FRI flx-3* (9 individuals). Error bars indicate standard deviation.

a

FRI *FRI fl4-1* *FRI flx-3* *FRI fl4-1 vin3* *FRI flx-3 vin3* *FRI fl4-1 flx-3* *FRI fl4-1 flx-3 vin3* *fri vin3* *FRI vin3*

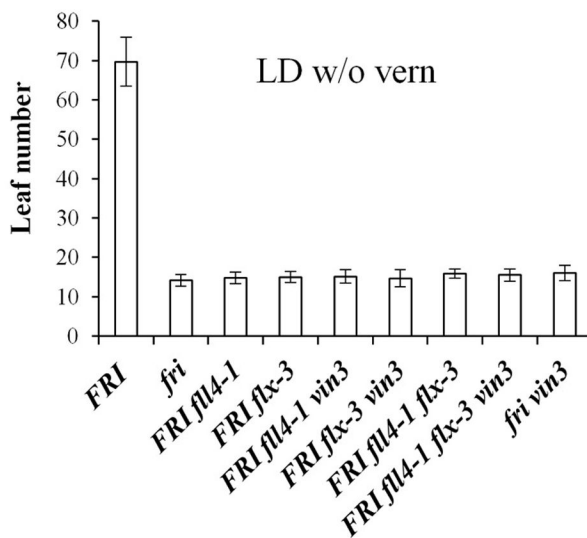
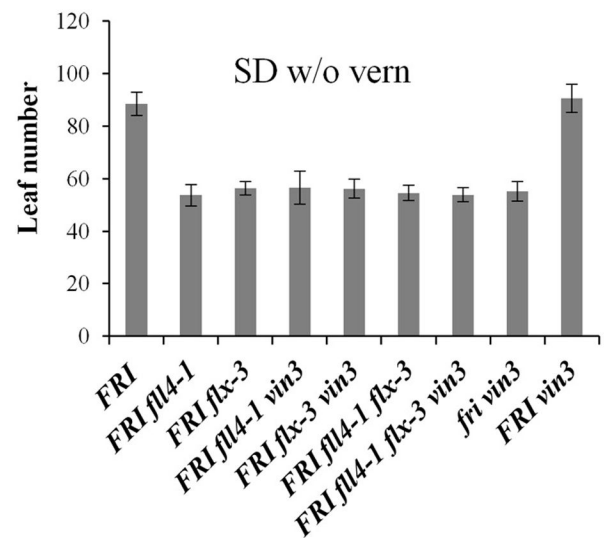
b**c**

Figure 3. *VIN3* is not required for the rapid flowering of *fl4* and *flx*

The requirement for *VIN3* was evaluated by determining the flowering phenotype of *fl4* and *flx* with and without *VIN3* in long days (a, b) and short days (c). All of the flowering time data are presented as mean values of 12 individual plants. Error bars indicate standard deviation.

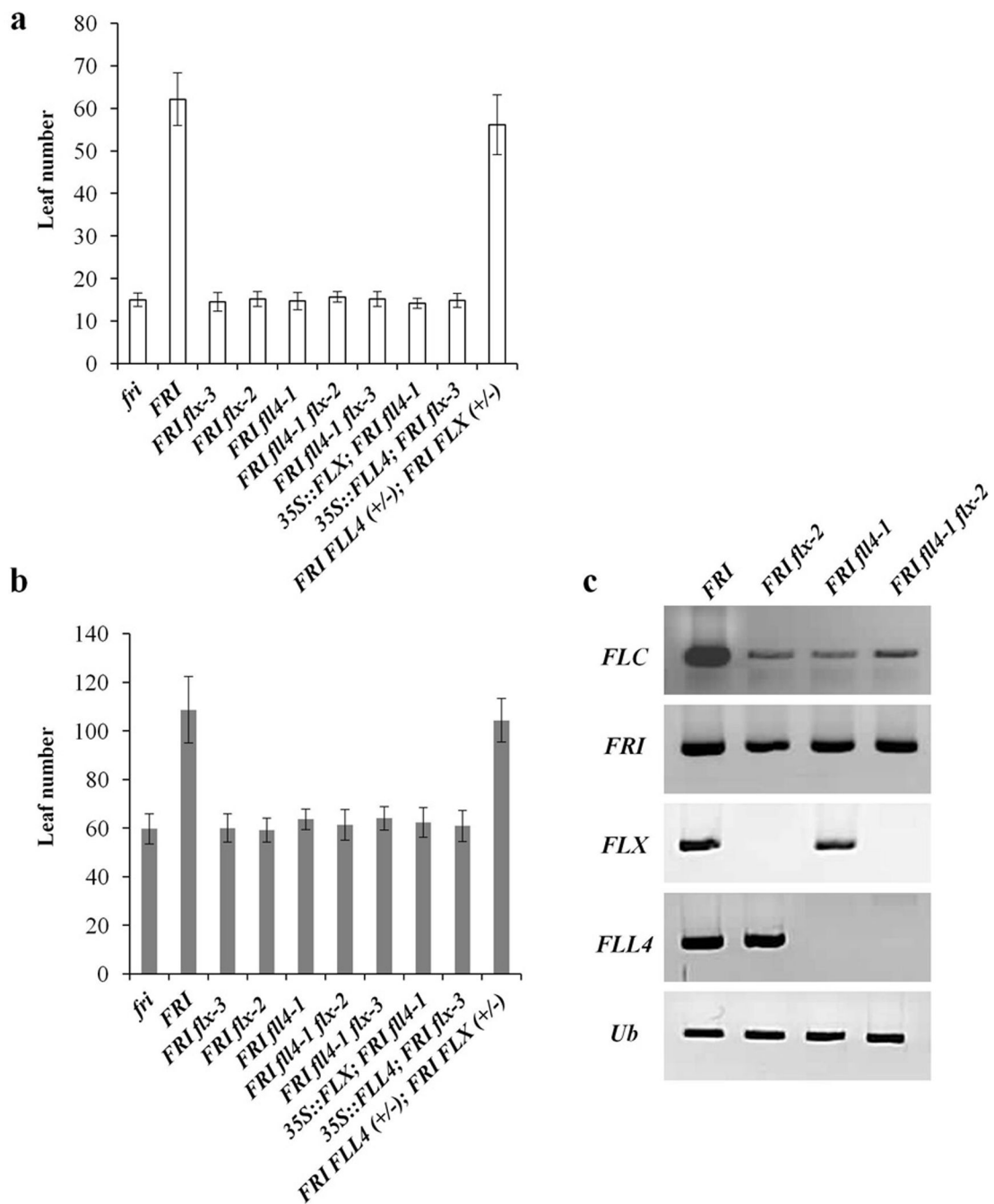


Figure 4. Evaluation of redundancy between *FLL4* and *FLX*

(a) Flowering was monitored in two different versions of the double mutant, *flx-2 fl4-1* and *flx-3 fl4-1* in the presence of *FRI*, relative to each single mutant; the effects of *FLX* overexpression in the *fl4* mutant and *FLL4* overexpression in the *flx* mutant were also determined in long days (a) and short days (b) without vernalization. (c) Transcript levels of *FLC*, *FRI*, *FLX* and *FLL4* in the mutant backgrounds were determined. All of the flowering time data are presented as mean values of 12 individual plants. Error bars indicate standard deviation.

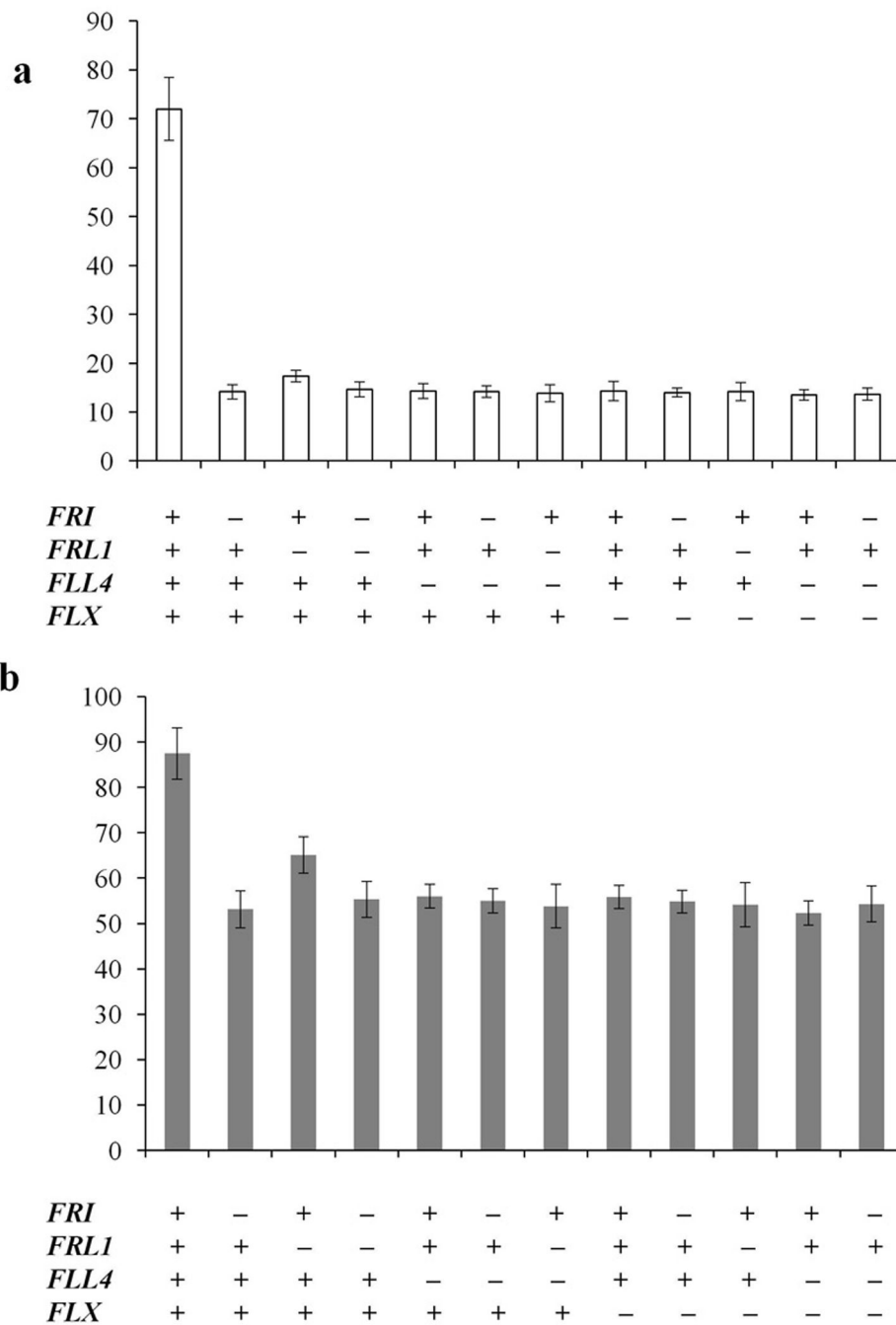


Figure 5. Flowering phenotype of double and triple mutants

Flowering of the indicated mutant combinations was evaluated in long days (a) and short days (b) without vernalization. All of the flowering time data are presented as mean values of 12 individual plants. Error bars indicate standard deviation.

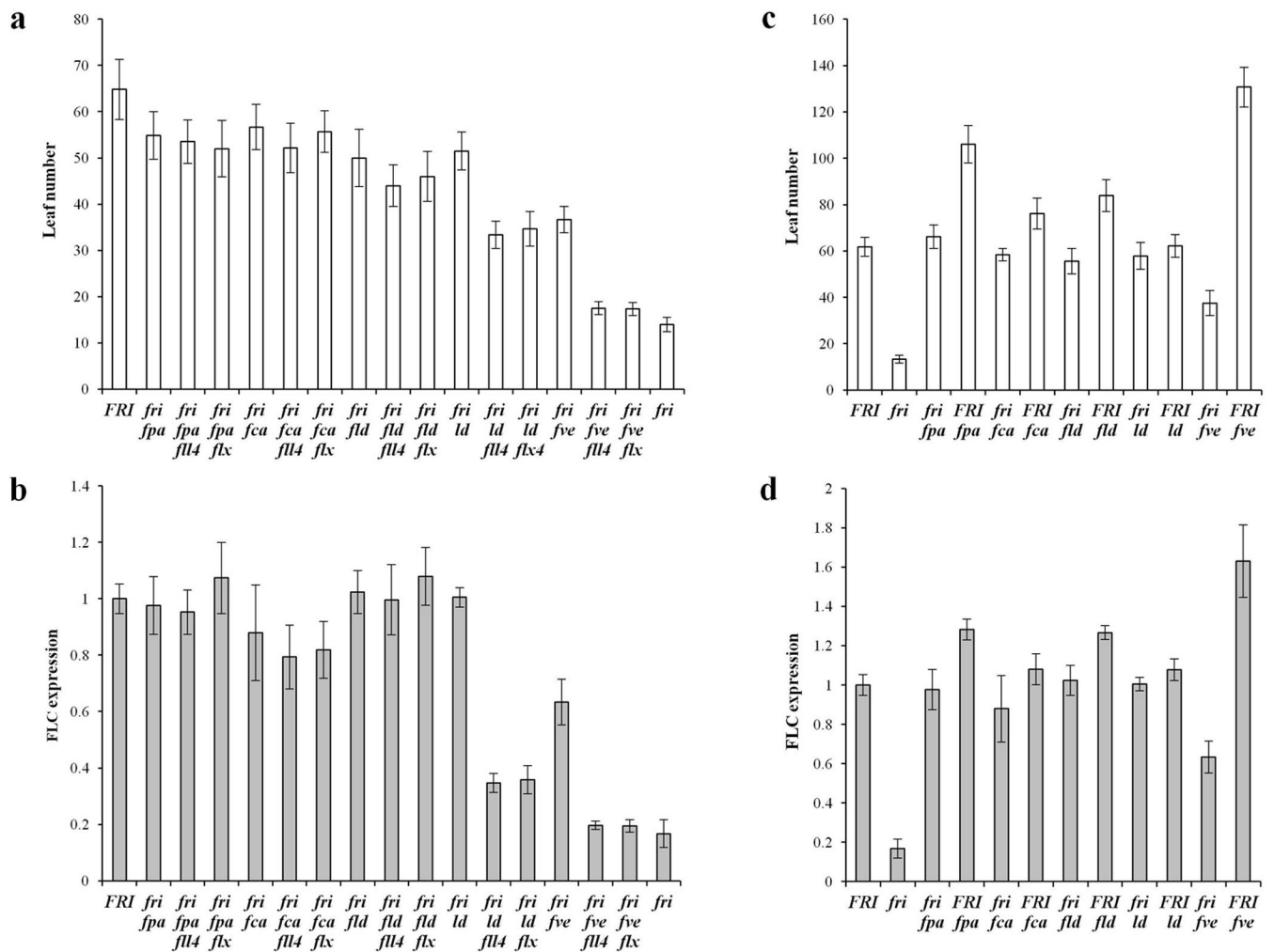


Figure 6. The flowering time and *FLC* expression phenotypes of *flt4* and *flx* combined with other flowering mutants

(a) Flowering of *flt4* and *flx* mutants in autonomous mutants *fpa*, *fca*, *fld*, *ld* and *fve* in long days without vernalization. (b) Transcript levels of *FLC* in the genotypes from (a). (c) Flowering of certain autonomous mutants with or without *FRI*. (d) Transcript levels of *FLC* in the corresponding genotypes from (c). All flowering time data are presented as mean values of 12 individual plants, and all of the expression data are presented as mean values of three biological replicates. Error bars indicate standard deviation.

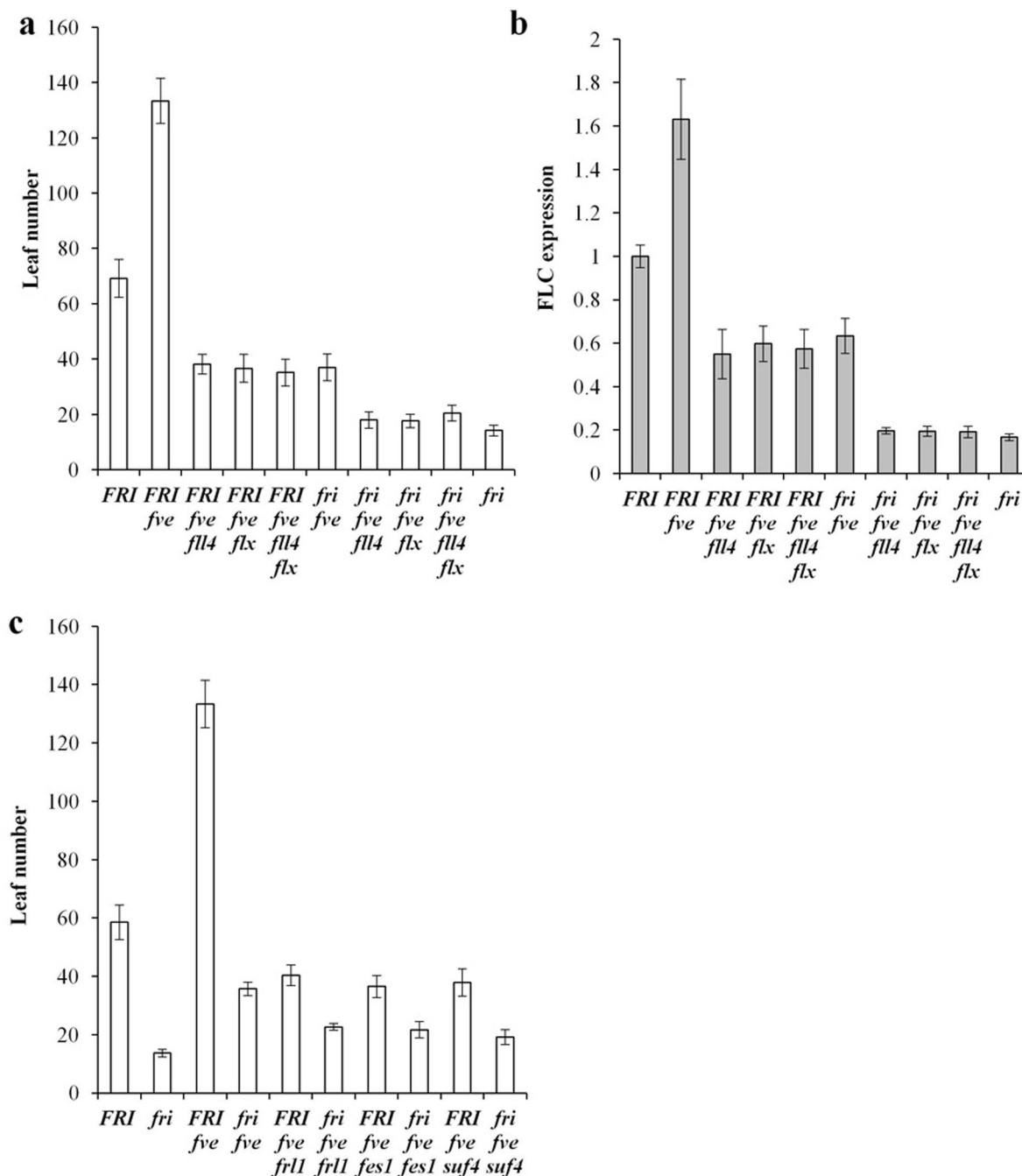


Figure 7. Effect of loss of various *FRI* complex components in the *fve* background

(a) Flowering was evaluated in various mutant combinations of *fri*, *fl4*, *flx* and *fve* in long days without vernalization. (b) Transcript levels of *FLC* in the genotypes studied from (a). (c) The flowering phenotype of *FRI* in various *FRI* complex component mutant backgrounds. All flowering time data are presented as mean values of 12 individual plants, and all of the expression data are presented as mean values of three biological replicates. Error bars indicate standard deviation.