

A randomized phase 2a efficacy and safety trial of the topical Janus kinase inhibitor tofacitinib in the treatment of chronic plaque psoriasis

W.C. Ports,¹ S. Khan,¹ S. Lan,¹ M. Lamba,¹ C. Bolduc,^{2,3} R. Bissonnette³ and K. Papp^{4,5}

¹Pfizer Inc., Groton, CT, 06340, U.S.A.

²The University of Montreal, Montreal, QC, Canada

³Innovaderm Research, Montreal, QC, Canada

⁴Probit Medical Research and ⁵K. Papp Clinical Research Inc., Waterloo, ON, Canada

Summary

Correspondence

William C. Ports.

E-mail: william.c.ports@pfizer.com

Accepted for publication

31 January 2013

Funding source

This study was funded by Pfizer Inc.

Conflicts of interest

See Appendix.

DOI 10.1111/bjd.12266

Background Tofacitinib (CP-690,550) is a novel Janus kinase inhibitor in development as an oral formulation for the treatment of several inflammatory diseases including psoriasis.

Objectives This phase 2a study aimed to assess the efficacy, systemic safety, local tolerability and systemic pharmacokinetics of topical tofacitinib in mild-to-moderate plaque psoriasis.

Methods Two tofacitinib ointment formulations were evaluated in this multicentre, double-blind, vehicle-controlled trial (NCT01246583). Seventy-one patients were randomized 2 : 1 : 2 : 1 to 2% tofacitinib ointment 1, vehicle 1, 2% tofacitinib ointment 2 and vehicle 2, each administered twice daily for 4 weeks to a single fixed 300 cm² treatment area containing a target plaque with or without one or more nontarget plaques and normal skin.

Results The primary endpoint of percentage change from baseline in the Target Plaque Severity Score at week 4 demonstrated statistically significant improvement for ointment 1 [least squares mean (LSM) -54.4%] vs. vehicle 1 (LSM -41.5%), but not ointment 2 (LSM -24.2%) vs. vehicle 2 (LSM -17.2%). Secondary endpoints (target plaque area and Itch Severity Item) improved similarly for tofacitinib ointment vs. corresponding vehicle. Adverse event (AE) occurrence was similar across treatment groups. All AEs were mild or moderate and none were serious or led to subject discontinuation. One application-site AE (erythema) was reported. Tofacitinib mean systemic exposure was minimal and was greater for ointment 1 than for ointment 2.

Conclusions Tofacitinib ointment 1 was well tolerated and efficacious compared with vehicle for the treatment of plaque psoriasis. Further study of topical tofacitinib for psoriasis treatment is warranted.

What's already known about this topic?

- Janus kinase (JAK) signalling has been implicated in the pathogenesis of psoriasis.
- Tofacitinib (CP-690,550) is a novel, small-molecule JAK inhibitor in development for the treatment of several inflammatory diseases: it has demonstrated efficacy in a phase 2b study in moderate-to-severe plaque psoriasis when given orally.
- Topical therapy is the more commonly used therapeutic option for psoriasis, but there is a need for improved topical treatments.

What does this study add?

- In this phase 2a study, tofacitinib in an ointment formulation demonstrated efficacy, systemic safety and local tolerability during 4 weeks of treatment in patients with mild-to-moderate chronic plaque psoriasis.
- Dermal penetration of tofacitinib, a small-molecule, was demonstrated.
- Topical application of tofacitinib has the potential to provide an additional therapeutic option for patients with plaque psoriasis.

Plaque psoriasis is the most common type of psoriasis and is characterized by thickened, erythematous plaques.¹ First-line management of mild-to-moderate psoriasis involves topical treatment primarily with corticosteroids and vitamin D analogues. Topical corticosteroid use can be limited by local and systemic adverse effects, especially if higher potency corticosteroids are used over the long term.^{1,2} Vitamin D analogues are more likely than corticosteroids to cause local skin irritation, and their use can be limited in terms of the application amount and body region. Systemic therapy and phototherapy are used for the treatment of moderate-to-severe disease and are often supplemented with topical therapies.^{1,2}

Patient dissatisfaction with current topical psoriasis treatments underscores a need for new therapies. There is a particular need for improved topical treatments for patients whose psoriasis is not severe enough to warrant treatment with systemic therapy or whose psoriasis is not adequately controlled with systemic therapy alone.³

Tofacitinib (CP-690,550) is a novel, small-molecule Janus kinase (JAK) inhibitor currently in development as an oral formulation for the treatment of several inflammatory diseases including psoriasis. In a cellular setting where JAKs signal in pairs, tofacitinib preferentially inhibits signalling by heterodimers containing JAK3 and/or JAK1 with functional selectivity over receptors that signal via pairs of JAK2.⁴ Tofacitinib inhibits interleukin (IL)-23 signalling by suppression of IL-23 receptor expression, resulting in inhibition of T helper (Th) 17 cell differentiation.⁵ Furthermore, inhibition of JAK1 will result in attenuation of signalling by additional proinflammatory cytokines, such as IL-6 and interferon (IFN)- γ ,^{6,7} as well as type I interferon.⁸ Oral tofacitinib has demonstrated efficacy in a 2-week phase 1 study in psoriasis,⁹ in a 12-week phase 2b study in moderate-to-severe plaque psoriasis¹⁰ and in other immune-mediated diseases such as rheumatoid arthritis^{11–17} and ulcerative colitis.¹⁸

This is the first reported clinical study of topical tofacitinib ointment therapy for chronic plaque psoriasis. The study compared the efficacy, local tolerability, systemic safety and pharmacokinetics (PK) of two tofacitinib ointment formulations.

Patients and methods

The study was performed in compliance with the Declaration of Helsinki and the International Conference on Harmonisa-

tion Good Clinical Practice Guidelines. The study protocol was approved by the institutional review board or independent ethics committee at each investigational centre, and all patients provided written informed consent.

Study design and treatment

This phase 2a, randomized, double-blind, parallel-group, vehicle-controlled study (NCT01246583), conducted at 10 centres (four in Canada; six in the U.S.A.), was initiated on 16 February 2011 and completed on 29 November 2011.

Patients were enrolled by the investigators and randomized 2 : 1 : 2 : 1 at baseline using an automated web/telephone randomization system to one of the following treatments: 2% (20 mg g⁻¹) tofacitinib ointment 1; vehicle 1; 2% (20 mg g⁻¹) tofacitinib ointment 2; or vehicle 2. Randomization occurred across all four treatment groups contemporaneously at all investigator centres. The proprietary ointment formulations contained standard excipients for a topical formulation and differed by one excipient (a penetration enhancer).

Treatments were administered topically twice daily for 4 weeks at a target application coverage of 3 mg cm⁻² to a single fixed treatment area of 300 cm² [\sim 1.5% body surface area (BSA)]. The treatment area included one target psoriasis plaque and could contain additional plaques and/or normal skin. On study visit days, showering or bathing, but not moisturizing, was permitted prior to attending. The morning study dose was not applied until instructed. After the final study treatment, the treatment area was left untreated during the 7–10-day follow-up.

Patients

Eligible patients were aged \geq 18 years with a diagnosis of stable, chronic, plaque psoriasis for \geq 6 months prior to the first study dose. Patients were required to have mild-to-moderate plaque psoriasis covering \leq 10% of their total BSA, and a target plaque area (TPA) \geq 9 cm² with a Target Plaque Severity Score (TPSS) \geq 5 and induration subscore \geq 2.

Exclusion criteria included: nonplaque forms of psoriasis; drug-induced psoriasis or history of psoriatic arthritis; recent systemic or local infection; hepatitis B/C or human immunodeficiency virus infection; history of lymphoproliferative disorder or malignancy, except adequately treated or excised basal/squa-

mous cell carcinoma, or cervical carcinoma in situ; evidence of tuberculosis infection; phototherapy within the previous 3 months; treatment with ustekinumab within the previous 12 months or other biologic agents within 6 months; conventional systemic psoriasis treatment within 6 months; or systemic treatments that could affect psoriasis such as oral or injectable corticosteroids, retinoids, methotrexate and ciclosporin within 4 weeks prior to the first study dose.

Topical treatments that could affect psoriasis, e.g. corticosteroids, tars, keratolytics, vitamin D analogues and retinoids, were discontinued for ≥ 2 weeks prior to the first study dose. Exceptions were permitted: hydrocortisone and hydrocortisone acetate $\leq 1\%$ (for use on palms, soles, face and intertriginous areas ≥ 15 cm from the treatment area); tar or salicylic acid preparations or shampoos free of corticosteroids (for the scalp only); and a study-supplied nonmedicated emollient (for all body regions except the treatment area). Potent cytochrome P450 (CYP) 3A4 inhibitors or inducers (Data S1, Table S1; see Supporting information) required washout of ≥ 7 days or five drug half-lives, whichever was longer, prior to the first study dose. Treatment lasting

≤ 7 days with moderate CYP3A4 inhibitors or inducers (except amiodarone) (Table S2; see Supporting information) was permitted during the study. Topical antibacterial and antifungal CYP3A4 inhibitors or inducers were permitted if applied ≥ 15 cm from the treatment area.

Assessments

The primary comparisons of interest were between the two active treatment groups and their corresponding vehicle groups. The primary efficacy endpoint was percentage change from baseline in TPSS at week 4; this was also evaluated as a secondary endpoint at weeks 1, 2 and 3. Other secondary efficacy endpoints were: change from baseline in TPSS subscores and TPA at weeks 1, 2, 3 and 4. Patient-reported outcomes were the Itch Severity Item (ISI) score change from baseline (weeks 1, 2, 3 and 4), and the proportion of patients in each Patient Satisfaction with Study Medication (PSSM) response category (week 4).

For TPSS and TPA evaluation, a single target plaque was selected at baseline. Plaques that were intertriginous or on the

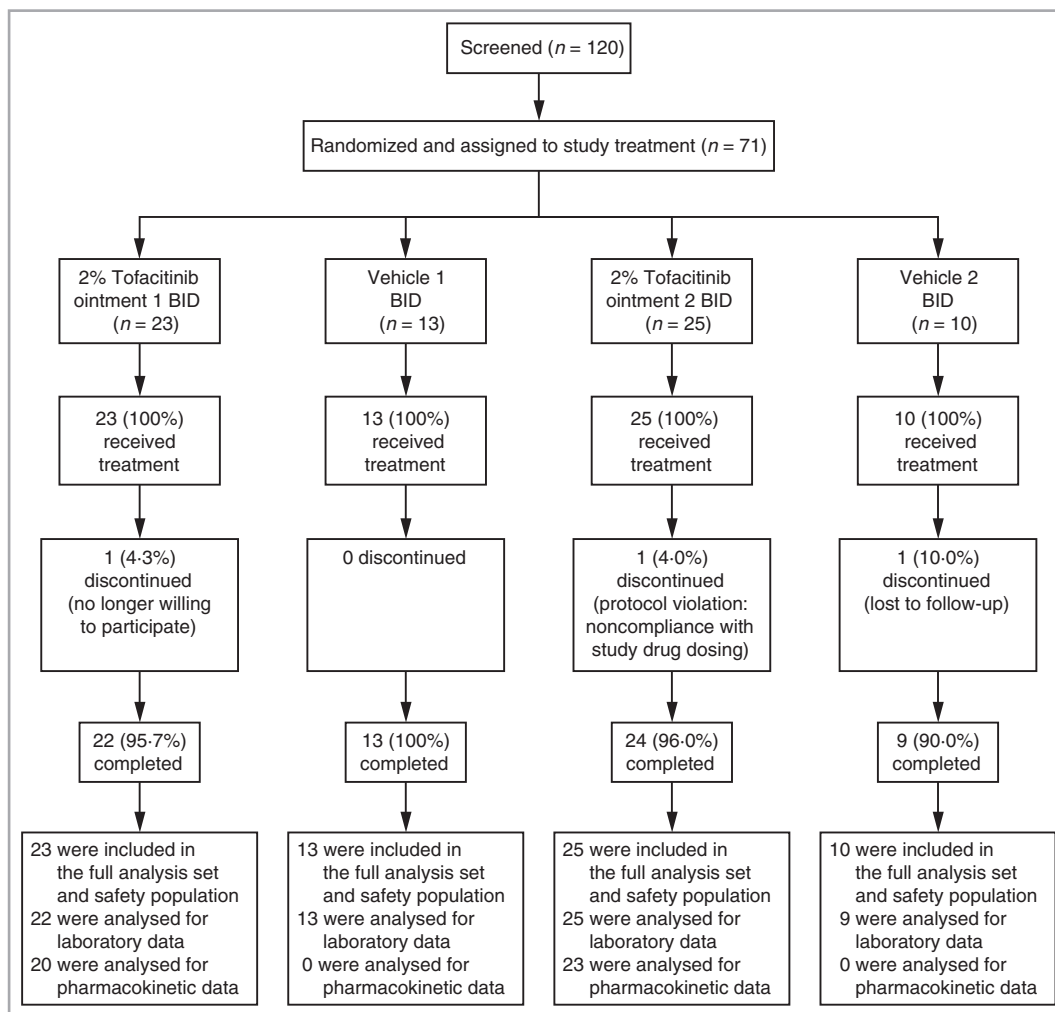


Fig 1. CONSORT diagram. BID, twice daily.

Table 1 Baseline demography and disease characteristics

| | Tofacitinib ointment 1 (n = 23) | Vehicle 1 (n = 13) | Tofacitinib Ointment 2 (n = 25) | Vehicle 2 (n = 10) |
|--|------------------------------------|-----------------------|------------------------------------|-----------------------|
| Sex (male), n (%) | 17 (73.9) | 5 (38.5) | 15 (60.0) | 6 (60.0) |
| Age (years), mean (SD) | 49.3 (14.5) | 50.2 (14.8) | 53.8 (14.4) | 45.9 (12.6) |
| Range | 24–76 | 32–72 | 27–80 | 26–64 |
| Race, n (%) | | | | |
| White | 23 (100.0) | 11 (84.6) | 24 (96.0) | 9 (90.0) |
| Other | 0 | 2 (15.4) | 1 (4.0) | 1 (10.0) |
| Weight (kg), mean (SD) | 94.5 (26.0) | 85.8 (12.0) | 89.2 (17.4) | 103.4 (30.3) |
| Range | 58.1–175.0 | 65.8–104.1 | 62.2–122.0 | 61.7–145.2 |
| Body mass index (kg m ⁻²), mean (SD) | 30.6 (8.6) | 30.9 (5.2) | 30.6 (6.9) | 33.1 (8.8) |
| Range | 22.0–63.1 | 24.6–40.7 | 18.6–43.6 | 22.5–44.8 |
| Duration of psoriasis since first diagnosis ^a (years), mean (range) | 17.1 (0.7–58.4) | 19.1 (0.6–51.8) | 17.7 (2.5–48.2) | 10.5 (2.3–21.5) |
| PASI, mean (SD) | 6.7 (2.51) | 6.7 (1.88) | 5.9 (2.72) | 5.1 (2.93) |
| Range | 3.7–13.5 | 3.6–10.1 | 1.5–13.8 | 2.4–12.4 |
| PGA, mean (SD) | 2.45 (0.47) | 2.41 (0.43) | 2.38 (0.52) | 2.47 (0.45) |
| Range | 2–3 | 2–3 | 2–3 | 2–3 |
| BSA ^b (%), mean (SD) | 4.4 (2.13) | 5.4 (2.29) | 4.1 (2.40) | 3.3 (2.78) |
| Range | 0.8–10.0 | 2.5–9.5 | 0.9–10.0 | 0.6–10.0 |
| TPSS, ^c mean (SD) | 7.22 (1.51) | 7.31 (1.38) | 6.80 (1.19) | 7.20 (1.40) |
| Range | 5.0–10.0 | 5.0–9.0 | 5.0–9.0 | 5.0–9.0 |
| TPA ^d (cm ²), mean (SD) | 34.06 (32.59) | 43.73 (31.55) | 30.72 (32.60) | 44.08 (41.02) |
| Range | 9.3–146.2 | 9.3–118.3 | 7.1–142.3 | 11.4–138.6 |
| ISI, ^e mean (SD) | 4.09 (2.52) | 5.54 (3.10) | 4.36 (2.53) | 6.20 (2.62) |
| Range | 0–9 | 0–10 | 0–8 | 2–10 |

BSA, body surface area; ISI, Itch Severity Item; PASI, Psoriasis Area and Severity Index; PGA, Physician Global Assessment; TPA, target plaque area; TPSS, Target Plaque Severity Score. ^aTo day 1 of this study; ^bBSA estimated by the handprint method; ^cTPSS ranged from 0 to 12 (increments of 1); higher scores represent greater severity of psoriasis; ^dTPA was measured by tracing the target plaque perimeter and quantifying its size by computer image analysis (planimetry); ^eISI ranged from 0 (no itching) to 10 (worst possible itching).

hands, feet, neck, face, elbows, knees, below the knees or on the scalp were not eligible as target plaques or included in the treatment area. The treatment area had to be free of infections and other nonpsoriatic skin conditions. Dermatological clinical evaluations were conducted by experienced dermatologists or physicians, and by the same evaluator (except in the case of an emergency) for each patient.

For TPSS, the target plaque was assessed separately for induration, scaling and erythema using a 5-point severity scale (0, none; 1, slight; 2, moderate; 3, marked; 4, very marked), and the scores summed to produce the TPSS sum score [13-point scale; maximum (most severe) score 12]. For TPA, the target plaque perimeter was traced at each visit and its size quantified by computerized image analysis (planimetry). For ISI, the worst itching due to psoriasis within the treatment area over the previous 24 h was recorded using a numeric rating scale from 0 (no itching) to 10 (worst possible itching). PSSM evaluated overall patient satisfaction with study treatment at week 4 using a single 7-point questionnaire, with options ranging from 'very dissatisfied' to 'very satisfied'. Target plaque photography was performed for illustrative purposes at only two investigator centres.

Safety assessments included the incidence and severity of adverse events (AEs), local tolerability at the treatment area [application-site AEs, burning/stinging (4-point scale: none, mild, moderate,

severe)], clinical laboratory values (chemistry, haematology and lipid panels), electrocardiograms (ECG) and vital signs.

Blood samples were collected at week 4 pre- (0 h) and post-dose (1, 2 and 4–9 h) to determine plasma levels of tofacitinib. PK parameters were calculated using noncompartmental analysis of concentration–time data: area under the plasma concentration–time profile from time zero to 12 h (AUC_τ), maximum plasma concentration (C_{max}) and time to C_{max} (T_{max}). Assuming steady state at week 4, AUC_τ for the 12-h dosing interval was calculated by assuming the 12-h concentration to be the same as that measured predose (time zero).

Statistics

The study sample size of 24 patients receiving tofacitinib ointment and 12 receiving vehicle (2 : 1 ratio) provided 88% power to detect a 30% improvement with tofacitinib ointment vs. 10% improvement with vehicle (power estimated based on a one-sided significance level of 0.10 for a two-sample comparison of normally distributed continuous variables, with a common standard deviation of 22%). Each tofacitinib ointment had a corresponding vehicle, resulting in a total target sample size of 72 (2 : 1 : 2 : 1 ratio across the four groups).

The TPSS primary endpoint and other continuous variables were analysed using a random-effects model for repeated mea-

asures. Least squares mean (LSM), standard error (SE) and one-sided 90% upper and lower confidence limits (UCL and LCL) were calculated. For comparisons between active treatment and corresponding vehicle, statistical significance was demonstrated if the 90% UCL was < 0 (designated with an asterisk). For changes from baseline (e.g. TPSS subscores) and other continuous variables, the same statistical methods as for the primary endpoint were used. PK data were summarized using descriptive statistics.

The full analysis set included all patients who were randomized to the study and received one or more dose(s) of study treatment.

Results

Patients

Seventy-one patients were randomized to ointment 1 ($n = 23$), vehicle 1 ($n = 13$), ointment 2 ($n = 25$) and vehicle 2 ($n = 10$), and received treatment (Fig. 1). Baseline demo-

graphic characteristics were similar across the groups (Table 1).

Efficacy

Analysis of the primary endpoint of percentage change from baseline in TPSS at week 4 demonstrated significant differences for ointment 1 (LSM -54.4%) vs. vehicle 1 [LSM -41.5% ; difference -12.87 ; confidence limits (CL) -25.03 , -0.71^*]; but not ointment 2 (LSM -24.2%) vs. vehicle 2 (LSM -17.2% ; difference -6.97 ; CL -20.57 , 6.62) (Fig. 2). Negative values for differences between groups represent a favourable treatment effect. TPSS percentage change from baseline was also significantly different for ointment 1 vs. vehicle 1 at weeks 2 and 3 (90% UCL -5.81^* and -4.52^* , respectively), but not for ointment 2 vs. vehicle 2 at any time point (Fig. 2). Baseline and week 4 target plaque photographs of patients receiving ointment 1 or vehicle 1 are shown in Figure 3.

Fig 2. Target Plaque Severity Score (TPSS) percentage change from baseline for (a) tofacitinib ointment 1 vs. vehicle 1 and (b) tofacitinib ointment 2 vs. vehicle 2 (full analysis set, no imputation). *Statistically significant (one-sided 90% upper confidence limit < 0); standard error bars may overlap at the prespecified statistical significance level. LSM, least squares mean.

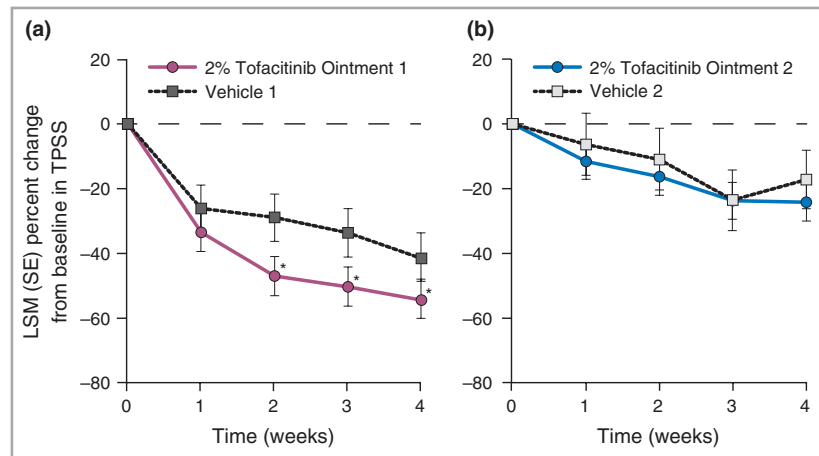


Fig 3. Target plaque photographs at baseline and week 4 for a patient receiving (a) ointment 1 and (b) vehicle 1. Ointment location is left leg above the knee; baseline Target Plaque Severity Score (TPSS) = 8; week 4 TPSS = 3 (-62.5%). Vehicle location is left leg above the knee; baseline TPSS = 7; week 4 TPSS = 6 (-14.3%).

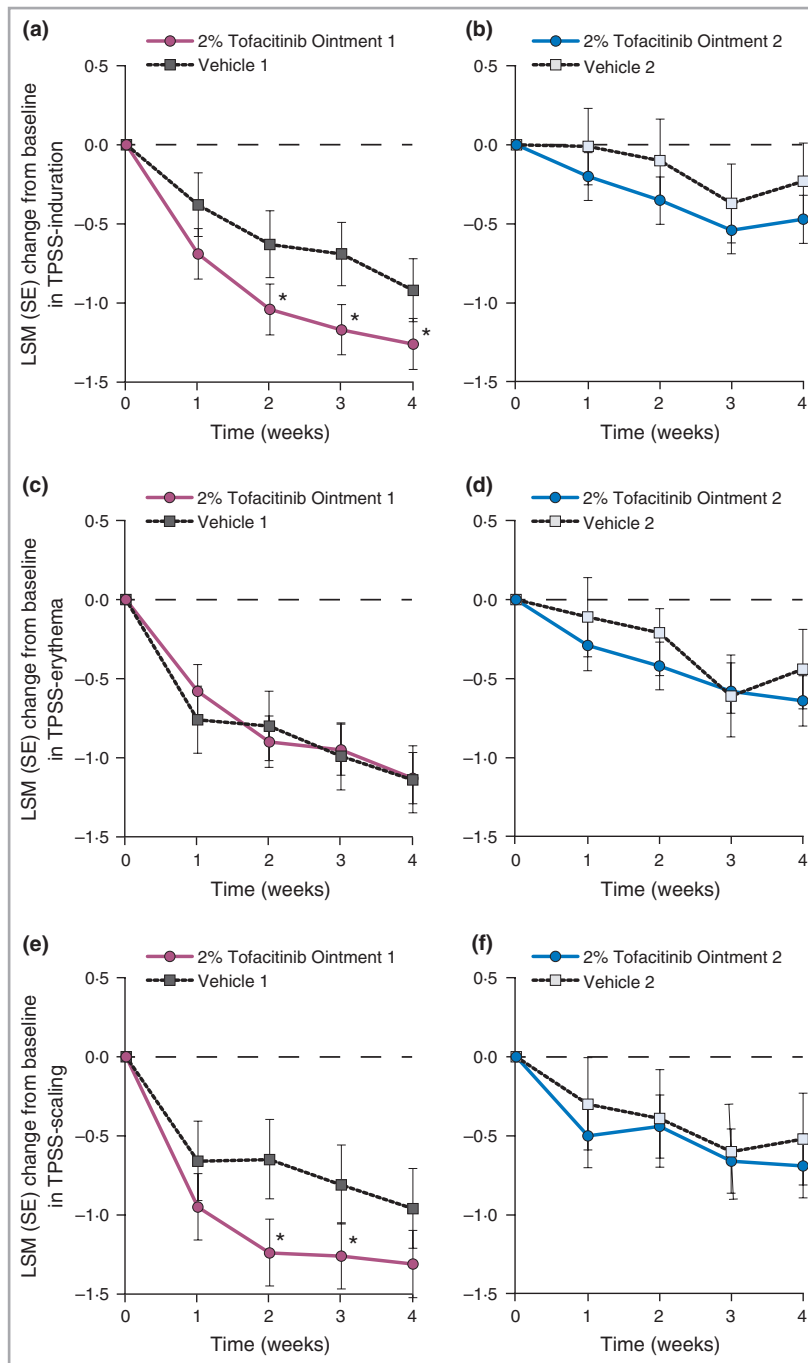


Fig 4. Target Plaque Severity Score (TPSS) – induration, erythema and scaling subscore changes from baseline for tofacitinib ointment 1 vs. vehicle 1 (a, c, e) and ointment 2 vs. vehicle 2 (b, d, f) (full analysis set, no imputation). *Statistically significant (one-sided 90% upper confidence limit < 0); standard error bars may overlap at the prespecified statistical significance level. LSM, least squares mean.

For ointment 1 vs. vehicle 1, the LSM change from baseline in TPSS subscore was significant for induration [weeks 2 (90% UCL -0.08*), 3 (90% UCL -0.15*) and 4 (90% UCL -0.01*); Fig. 4] and scaling [weeks 2 (90% UCL -0.22*) and 3 (90% UCL -0.09*); Fig. 4] but not for erythema (Fig. 4). For ointment 2 vs. vehicle 2, the LSM change from baseline in TPSS subscore was not significant for any subscore at any time point.

The mean TPA values at baseline were higher in the vehicle groups (mean 43.73 cm² and 44.08 cm² for vehicle 1 and

vehicle 2, respectively) than in the ointment groups (mean 34.06 cm² and 30.72 cm² for ointment 1 and ointment 2, respectively). All treatment groups had mean percentage decreases from baseline in TPA at weeks 1–4. The LSM percentage change from baseline in TPA was significant for ointment 1 difference from vehicle 1 at weeks 3 (-20.34%) and 4 (-19.04%), but was not significant for ointment 2 difference from vehicle 2 at any time point (Table 2).

The ointment groups had lower baseline mean ISI scores than the vehicle groups; mean ISI scores at baseline ranged

Table 2 Target plaque area (TPA) least squares mean (LSM) percentage change from baseline (full analysis set, no imputation)

| Week | Tofacitinib ointment 1 | | | Tofacitinib ointment 2 | | |
|------|------------------------|------------|--------------------------------------|------------------------|------------|--------------------------------------|
| | Vehicle 1 | Ointment 1 | Ointment 1 difference from vehicle 1 | Vehicle 2 | Ointment 2 | Ointment 2 difference from vehicle 2 |
| 1 | -11.06 | -15.62 | -4.56 (12.87) [-21.18, 12.06] | -3.18 | -0.90 | 2.28 (14.41) [-16.34, 20.90] |
| 2 | -10.92 | -24.16 | -13.24 (12.73) [-29.69, 3.21] | -14.97 | -4.22 | 10.74 (14.80) [-8.36, 29.85] |
| 3 | -13.32 | -33.66 | -20.34 (12.67) [-36.71, -3.97*] | -11.86 | -2.48 | 9.38 (14.62) [-9.51, 28.27] |
| 4 | -19.40 | -38.44 | -19.04 (12.60) [-35.34, -2.75*] | -4.66 | -8.16 | -3.50 (14.33) [-22.02, 15.02] |

Data are LSM (SE) [upper and lower one-sided 90% confidence limits]. The number of patients with evaluable data in weeks 1–4, respectively, were: 14, 19, 18, 20 (ointment 1); 12, 11, 12, 12 (vehicle 1); 19, 20, 18, 21 (ointment 2); and 8, 6, 7, 8 (vehicle 2). Based on random-effects model for repeated measurement. *Statistically significant (one-sided 90% upper confidence limit < 0).

Table 3 Summary of tofacitinib plasma pharmacokinetic parameters after 4 weeks of treatment

| | Tofacitinib ointment 1 (n = 20) | Tofacitinib ointment 2 (n = 23) |
|---|---------------------------------|---------------------------------|
| T_{max} (h) | 0.50 (0.00, 4.75) | 2.01 (0.00, 3.98) |
| C_{max} (ng mL ⁻¹) | 0.19 (75) | 0.12 (47) |
| AUC _τ (ng h ⁻¹ mL ⁻¹) | 1.92 (61) | 1.38 (36) |

Data are median (range) for T_{max} and geometric mean (%CV) for C_{max} and AUC_τ. For patients with tofacitinib concentrations below the LLOQ, C_{max} and AUC were calculated by setting their values to the LLOQ, 0.100 ng mL⁻¹. AUC_τ, area under the plasma concentration–time profile from time zero to 12 h; C_{max} , maximum plasma concentration; LLOQ, lower limit of quantitation; T_{max} , time to C_{max} .

from 4.09 in the ointment 1 group to 6.20 in the vehicle 2 group. All groups had mean decreases from baseline at all time points; the mean scores at week 4 ranged from 1.55 in the ointment 1 group to 4.44 in the vehicle 2 group, with the ointment 1 group having the largest LSM decreases from baseline at each time point. At weeks 1 and 4, the LSM change from baseline in ISI was significant for ointment 1 vs. vehicle 1, but not for ointment 2 vs. vehicle 2 at any time point.

Of patients in the ointment 1 group, 50% had PSSM responses of 'very satisfied' at week 4, compared with 32% in the ointment 2 group and 23% and 0% in the vehicle 1 and vehicle 2 groups, respectively.

Safety

Treatment-emergent all-causality AEs were reported for 25/71 (35%) patients; all were mild or moderate. There were no deaths, discontinuations due to AEs or serious AEs. The only AEs to occur in more than one patient were nasopharyngitis (n = 4) and urinary tract infection (n = 3). One patient treated with ointment 1 reported an application-site AE (erythema); 13 patients (four in the ointment 1 group and three each in the vehicle 1, ointment 2 and vehicle 2 groups) reported pre-dosing burning/stinging at baseline. The number

of patients reporting burning/stinging post-dosing at the treatment area was small (n = 4 at baseline, and n = 5, 5, 2 and 1 at weeks 1–4, respectively) and occurred at a similar frequency across the groups; all reports were mild or moderate, and no patient experienced severe burning/stinging. There were no clinically meaningful median changes from baseline in laboratory, ECG or vital sign parameters across treatment groups. No patient met protocol-defined clinical laboratory safety monitoring or discontinuation criteria during treatment.

Pharmacokinetics

PK data were available from 43 patients treated with tofacitinib (20 with ointment 1 and 23 with ointment 2). In the ointment 1 group, 12/20 (60%) patients had a systemic concentration at or above the lower limit of quantification (LLOQ; 0.100 ng mL⁻¹) for at least one time point, compared with 6/23 (26%) in the ointment 2 group. Following the application of 2% tofacitinib, the median T_{max} values were 0.5 and 2 h for ointment 1 and ointment 2, respectively (Table 3). By setting all samples < LLOQ to 0.100 ng mL⁻¹, the geometric mean AUC_τ in the ointment 1 group (1.92 ng h⁻¹ mL⁻¹) was found to be approximately 40% higher than in the ointment 2 group (1.38 ng h⁻¹ mL⁻¹). Similarly, the geometric mean C_{max} in the ointment 1 group (0.19 ng mL⁻¹) was approximately 55% higher than in the ointment 2 group (0.12 ng mL⁻¹).

Discussion

In psoriatic skin, dermal dendritic cells acquire an inflammatory phenotype and produce cytokines that result in the activation of Th1 and Th17 T cells.¹⁹ Differentiation of T cells to Th17 cells is supported by IL-6 and IL-21.^{20,21} Active Th1 lymphocytes, characterized by tumour necrosis factor and IFN-γ secretion and IL-17-secreting Th17 cells, stimulate the activation and proliferation of epidermal keratinocytes and further production of proinflammatory cytokines and chemokines, thus contributing to the clinical features of psoriasis.²² Consequently, the immunomodulatory mechanisms of JAK1 and JAK3 inhibition by tofacitinib are expected to block or

attenuate T-cell function, T-cell differentiation and cytokine signalling (e.g. IL-6, IL-21, IL-23, IFN- γ), which play a key role in the pathogenesis of psoriasis.

Results of clinical trials evaluating two JAK inhibitor investigational drugs for the treatment of plaque psoriasis suggests that JAK inhibition can improve psoriasis. In a phase 2b study, 12 weeks of treatment with an oral formulation of tofacitinib resulted in clinical improvement compared with placebo in patients with moderate-to-severe plaque psoriasis.¹⁰ In a proof-of-concept study with the JAK1/2 inhibitor INCB018424 applied topically in a cream formulation for 4 weeks, the mean total lesion score (scale of 0–4 for erythema, scaling and thickness; total score range 0–12) at week 4 decreased from baseline by 32% with vehicle daily or twice daily; 53% with 1.0% INCB018424 daily; and 54% with 1.5% INCB018424 twice daily. Topical application of INCB018424 was also well tolerated.²³

This phase 2a study of tofacitinib ointment for the topical treatment of plaque psoriasis met its primary endpoint of percentage change from baseline in TPSS for ointment 1 vs. vehicle 1 (LSM -54.4% vs. -41.5%, respectively); however, the difference between ointment 2 and vehicle 2 (LSM -24.2% vs. -17.2%, respectively) did not achieve statistical significance. TPSS induration and scaling subscores (but not erythema) and TPA secondary endpoints supported these results. The improvement in ISI observed for ointment 1 with the treatment of only a small area of psoriatic skin indicates that the treatment provided significant relief of pruritus and was well tolerated. Both ointment formulations demonstrated local tolerability similar to vehicle, and no clinically significant systemic or local safety signals for tofacitinib were identified.

The percentage decrease from baseline in TPSS observed at week 4 for ointment 1 (-54.4%) is within the range for some other psoriasis topical treatments reporting week-4 efficacy with a similarly described 13-point scale total lesion sum score: vitamin D analogues -32% to -56%;^{24–26} betamethasone dipropionate -41%;²⁴ and a combination of these treatments -61%.²⁴

Dermal penetration of tofacitinib was demonstrated by measurable, although limited, systemic levels of tofacitinib when applied to a treatment area of approximately 1.5% BSA. Mean systemic exposures from the current study were approximately 40-fold lower than exposures from the lowest dose tested (2 mg twice daily) in a previous study of oral tofacitinib in patients with moderate-to-severe psoriasis. Furthermore, the highest individual AUC for ointment 1 and ointment 2 was more than eightfold lower than the mean systemic exposure from the 2 mg twice daily oral tofacitinib dose (Pfizer, data on file).

This study was limited by its relatively small sample size, and the efficacy endpoints for localized treatment of selective body region plaques may not be reflective of whole-body efficacy endpoints for treatment of all plaques. Clinical response with treatment longer than 4 weeks cannot be predicted, although an efficacy response plateau for ointment 1 is not evident during the 4-week duration of this study.

The observed difference in efficacy between vehicle 1 and vehicle 2 was unexpected given the only difference between the vehicle formulations was the penetration enhancer contained in vehicle 1. Differences in the vehicles' emollient properties may explain this difference; however, such speculation should be made with caution due to the small sample size of the vehicle treatment groups (vehicle 1 $n = 13$ vs. vehicle 2 $n = 10$).

In conclusion, this small phase 2a study demonstrated that topical treatment with the JAK inhibitor tofacitinib in an ointment formulation provided improvement in the clinical signs of psoriasis for patients with mild-to-moderate chronic plaque psoriasis. Further study of topical tofacitinib is needed to investigate longer treatment duration, tofacitinib dose and regimen, increased BSA, and use on other body regions (i.e. face, intertriginous areas, elbows and knees) in a larger patient population.

Acknowledgments

The authors would like to thank the patients who were involved in this study, and the A3921116 investigators and study team. Editorial support was provided by Emma Robinson and Anne Marie Reid, PhD, of Complete Medical Communications, and was funded by Pfizer Inc.

Study investigators

Canada: Dr Robert Bissonnette, Dr Chantal Bolduc, Dr Wayne D. Carey, Dr Kim Papp and Dr Yves Poulin. U.S.A.: Dr Richard Lee Beasley, Dr Eduardo Humberto Tschen, Dr Amy Markert Morris, Dr Joel Schlessinger, Dr George J Schmieder and Dr Howard Lee Sofen.

References

- Gudjonsson JE, Elder JT. Psoriasis. In: *Fitzpatrick's Dermatology in General Medicine* (Goldsmith LA, Katz SI, Gilchrist BA, Paller A, Leffell DJ, Wolff K, eds), 8th edn. New York: McGraw-Hill Medical, 2012; 197–232.
- Papp K, Gulliver W, Lynde C *et al.* Canadian guidelines for the management of plaque psoriasis: overview. *J Cutan Med Surg* 2011; **15**:210–19.
- Williams SC. New biologic drugs get under the skin of psoriasis. *Nat Med* 2012; **18**:638.
- Meyer DM, Jesson MI, Li X *et al.* Anti-inflammatory activity and neutrophil reductions mediated by the JAK1/JAK3 inhibitor, CP-690,550, in rat adjuvant-induced arthritis. *J Inflamm* 2010; **7**:41.
- Ghoreschi K, Jesson MI, Li X *et al.* Modulation of innate and adaptive immune responses by tofacitinib (CP-690,550). *J Immunol* 2011; **186**:4234–43.
- Murray PJ. The JAK-STAT signaling pathway: input and output integration. *J Immunol* 2007; **178**:2623–9.
- O'Sullivan LA, Liongue C, Lewis RS *et al.* Cytokine receptor signaling through the Jak-Stat-Socs pathway in disease. *Mol Immunol* 2007; **44**:2497–506.
- Rosengren S, Corr M, Firestein GS, Boyle DL. The JAK inhibitor CP-690,550 (tofacitinib) inhibits TNF-induced chemokine expres-

- sion in fibroblast-like synoviocytes: autocrine role of type I interferon. *Ann Rheum Dis* 2012; **71**:440–7.
- 9 Boy MG, Wang C, Wilkinson BE *et al.* Double-blind, placebo-controlled, dose-escalation study to evaluate the pharmacologic effect of CP-690,550 in patients with psoriasis. *J Invest Dermatol* 2009; **129**:2299–302.
 - 10 Papp K, Menter A, Strober B *et al.* Efficacy and safety of tofacitinib, an oral JAK inhibitor, in the treatment of psoriasis: a Phase 2b randomized placebo-controlled dose-ranging study. *Br J Dermatol* 2012; **167**:668–77.
 - 11 Burmester G, Blanco R, Charles-Schoemann C *et al.* Tofacitinib (CP-690,550), an oral Janus kinase inhibitor, in combination with methotrexate, in patients with active rheumatoid arthritis with an inadequate response to tumor necrosis factor-inhibitors: a 6-month Phase 3 study. *Arthritis Rheum* 2011; **63**(Suppl. 10): S279.
 - 12 van der Heijde D, Tanaka Y, Fleischmann R *et al.* Tofacitinib (CP-690,550), an oral Janus kinase inhibitor, in combination with methotrexate reduced the progression of structural damage in patients with rheumatoid arthritis: a 24-month Phase 3 study. *Arthritis Rheum* 2011; **63**(Suppl. 10):S107.
 - 13 Kremer JM, Li ZG, Hall S *et al.* Tofacitinib (CP-690,550), an oral Janus kinase inhibitor, in combination with traditional DMARDs: a Phase 3 efficacy and safety study in patients with active rheumatoid arthritis with an inadequate response to DMARDs. *Ann Rheum Dis* 2011; **70**:170.
 - 14 Fleischmann R, Cutolo M, Genovese MC *et al.* Phase IIb dose-ranging study of the oral JAK inhibitor tofacitinib (CP-690,550) or adalimumab monotherapy versus placebo in patients with active rheumatoid arthritis with an inadequate response to disease-modifying antirheumatic drugs. *Arthritis Rheum* 2012; **64**:617–29.
 - 15 Kremer JM, Cohen S, Wilkinson BE *et al.* A phase IIb dose-ranging study of the oral JAK inhibitor tofacitinib (CP-690,550) versus placebo in combination with background methotrexate in patients with active rheumatoid arthritis and an inadequate response to methotrexate alone. *Arthritis Rheum* 2012; **64**:970–81.
 - 16 Fleischmann R, Kremer J, Cush J *et al.* Placebo-controlled trial of tofacitinib monotherapy in rheumatoid arthritis. *N Engl J Med* 2012; **367**:495–507.
 - 17 van Vollenhoven RF, Fleischmann R, Cohen S *et al.* Tofacitinib or adalimumab versus placebo in rheumatoid arthritis. *N Engl J Med* 2012; **367**:508–19.
 - 18 Sandborn WJ, Ghosh S, Panes J *et al.* Tofacitinib, an oral Janus kinase inhibitor, in active ulcerative colitis. *N Engl J Med* 2012; **367**:616–24.
 - 19 Racz E, Prens EP. Molecular pathophysiology of psoriasis and molecular targets of antipsoriatic therapy. *Expert Rev Mol Med* 2009; **11**:e38.
 - 20 Hirahara K, Ghoreschi K, Laurence A *et al.* Signal transduction pathways and transcriptional regulation in Th17 cell differentiation. *Cytokine Growth Factor Rev* 2010; **21**:425–34.
 - 21 Nestle FO, Kaplan DH, Barker J. Psoriasis. *N Engl J Med* 2009; **361**:496–509.
 - 22 Mak RK, Hundhausen C, Nestle FO. Progress in understanding the immunopathogenesis of psoriasis. *Actas Dermosifiliogr* 2009; **100** (Suppl. 2):2–13.
 - 23 Punwani N, Scherle P, Flores R *et al.* Preliminary clinical activity of a topical JAK1/2 inhibitor in the treatment of psoriasis. *J Am Acad Dermatol* 2012; **67**:658–64.
 - 24 van der Velden, Pasch MC, Van Erp PE *et al.* Treatment of plaque psoriasis with the two-compound product calcipotriol/betamethasone dipropionate versus both monotherapies: an immunohistochemical study. *J Dermatolog Treat* 2010; **21**:13–22.
 - 25 Veien NK, Bjerke JR, Rossmann-Ringdahl I, Jakobsen HB. Once daily treatment of psoriasis with tacalcitol compared with twice daily treatment with calcipotriol. A double-blind trial. *Br J Dermatol* 1997; **137**:581–6.
 - 26 Zhu X, Wang B, Zhao G *et al.* An investigator-masked comparison of the efficacy and safety of twice daily applications of calcitriol 3 microg/g ointment vs. calcipotriol 50 microg/g ointment in subjects with mild to moderate chronic plaque-type psoriasis. *J Eur Acad Dermatol Venereol* 2007; **21**:466–72.

Appendix

W.C.P., S.L. and M.L. are employees of Pfizer Inc. S.K. is an employee of PharmaNet/i3, who were paid contractors to Pfizer in the development of the manuscript, study design stage and to act as the study clinician. C.B. has been a principal investigator, an advisor or consultant, a scientific officer, member of a scientific advisory board, and a speaker for the following groups: Abbott, Amgen, Astellas, Celgene, Centocor-Ortho Biotech, Incyte, Isotechnika, Janssen, Lilly, Medimmune, Merck, Pfizer Inc., Novartis and Welichem Biotech. R.B. has been a principal investigator, an advisor or consultant, a scientific officer, member of a scientific advisory board, and a speaker for the following groups: Abbott, Amgen, Astellas, Celgene, Centocor-Ortho Biotech, Incyte, Isotechnika, Janssen, Lilly, Medimmune, Merck, Pfizer Inc., Novartis and Welichem Biotech. K.A.P. has been a principal investigator, an advisor or consultant, a scientific officer, member of a scientific advisory board, and a speaker for the following groups: Abbott, Amgen, Astellas, Celgene, Centocor-Ortho Biotech, Incyte, Isotechnika, Janssen, Lilly, Medimmune, Merck, Pfizer Inc., and Novartis.

Supporting Information

Additional Supporting Information may be found in the online version of this article at the publisher's website:

Data S1. CYP3A4 inhibitors and inducers.

Table S1. List of prohibited potent inhibitors and inducers of CYP3A4.

Table S2. List of permitted moderate inhibitors and inducers of CYP3A4.