

REVIEW ARTICLE

Trichuris muris research revisited: a journey through time

REBECCA J. M. HURST* and KATHRYN J. ELSE

*The University of Manchester, Manchester M13 9PT, UK**(Received 18 April 2013; revised 23 May and 29 May 2013; accepted 4 June 2013)*

SUMMARY

The mouse whipworm *Trichuris muris* has long been used as a tractable model of human Trichuriasis. Here we look back at the history of *T. muris* research; from the definition of the species and determination of its life cycle, through to the complex immune responses that we study today. We highlight the key research papers that have developed our understanding of immune responses to this parasite, and reflect on how original concepts have been transformed, as our knowledge of immunology has grown. Although we have a good understanding of host–parasite interactions in the context of the underlying cellular immunology, there are still many aspects of the biology of the *Trichuris* parasite that remain undefined. We predict that advances in parasite biology will be key in the future development of new and improved treatments for Trichuriasis.

Key words: *Trichuris muris*, helminth, nematode, parasite, mouse.

THE ORIGIN OF THE SPECIES

Whipworms are intestinal dwelling nematode parasites of mammals. With a distinctive morphology comprising a long thin anterior end – the stichosome – which embeds in the gut epithelial cells of its host, and a bulbous posterior end, the generic name for all whipworm species is *Trichuris* or ‘hair tail’. The name *Trichuris* was applied by Roederer in 1761, mistakenly identifying the thread-like head end of the parasite as the tail. There are over 70 species of *Trichuris* recognized, including parasites of medical, veterinary and scientific interest. The human whipworm is one of man’s ‘heirloom parasites’ with man and worm co-evolving together. Evidence of an association between whipworm and ancient man dates back over 6000 years with whipworm eggs found in ancient archaeological sites of both the Old and New World (Araujo *et al.* 2008). We focus here on over half a century of research using *Trichuris muris* in the mouse. We reflect on the early pioneering studies and interesting interpretations of datasets made in the absence of a clear understanding of the cellular immune responses to infection. We define milestones in *Trichuris* research (summarized in Fig. 1), as our understanding of immunology was revolutionized by the concept of T helper cell subsets.

The early studies on *Trichuris* infections in mice were conducted by parasitologists interested in

studying the parasite, its life cycle and parasite biology. Later, *T. muris* infections in the laboratory mouse were used by parasite immunologists to understand host–parasite interactions at an immunological level, with a long-term vision of developing vaccines to promote resistance to infection. Basic immunologists also recognized the usefulness of gut-dwelling worm infections as tools to probe the immune system, exploring more fundamental immunological questions. Recently, there has been a return to understanding parasite biology and the functions of parasite molecules. This resurgence reflects both the lack of lead antigens to include in vaccines, and an interest in identifying parasite immunomodulatory molecules that may have therapeutic potential for inflammatory diseases of the developed world.

From a parasitological point of view, the life cycle of the *Trichuris* species of parasite took many years to describe accurately. An understanding of embryonation of *Trichuris* spp. eggs dates back to Davaine (1858) with Fahmy (1954) including a definition of the conditions required for successful development of the first larval stage within the egg (Davaine, 1858; Fahmy, 1954). These observations have relevance today, with laboratories around the world that maintain the *Trichuris* life cycle discovering by chance that slightly acidic water impairs embryonation and results in failed egg cultures. There were early misconceptions about the life cycle, including descriptions of migratory phases, before Fahmy (1954) detailed a more precise direct life cycle including two larval moults and fecund adult parasites emerging around day 34 (Fahmy, 1954). The full series of

* Corresponding author: Faculty of Life Sciences, AV Hill Building, University of Manchester, Oxford Road, Manchester M13 9PT, UK. E-mail: rebecca.hurst@manchester.ac.uk

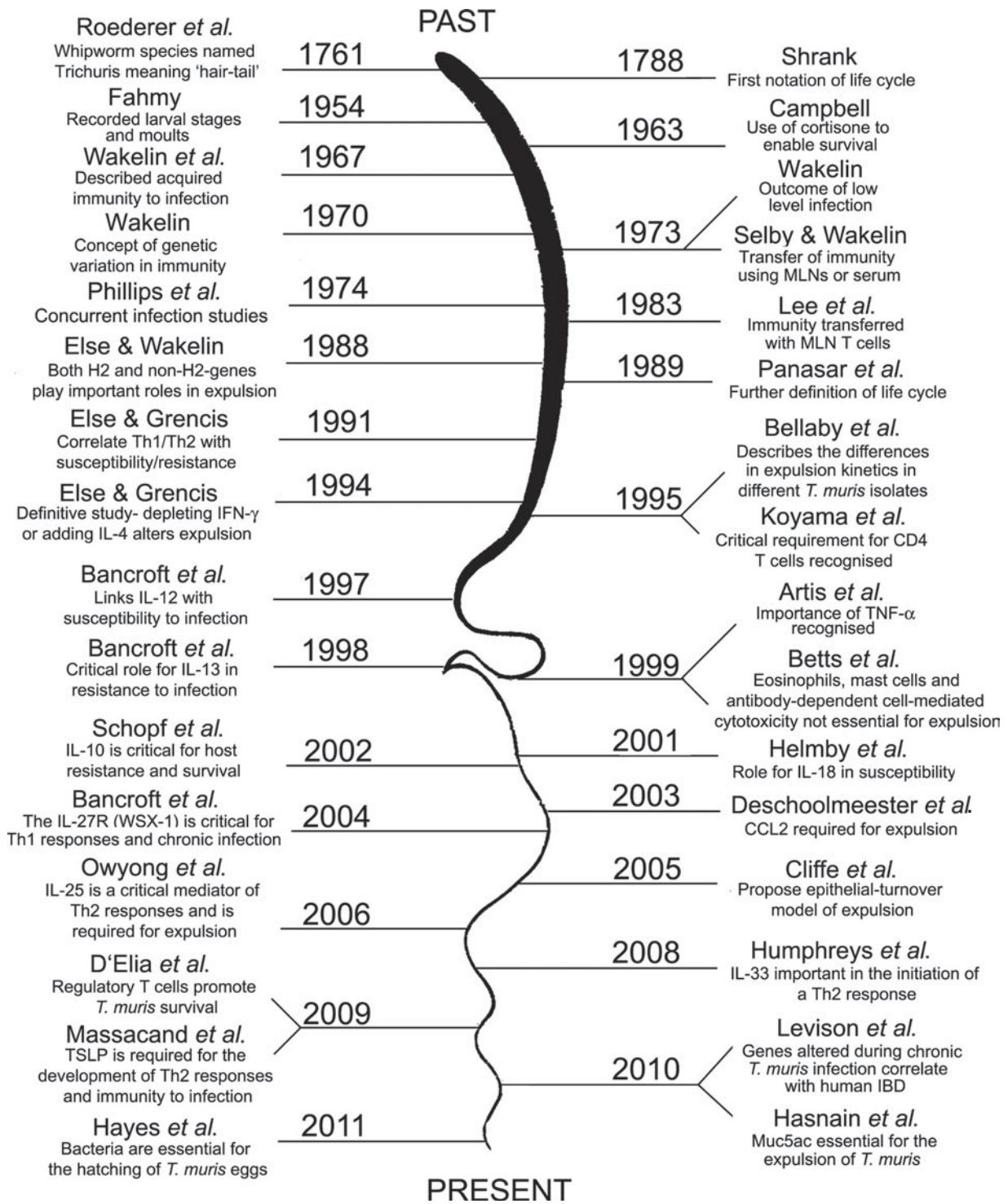


Fig. 1. Milestones in *T. muris* research. The timeline shows an overview of some of the key research papers that have been published on *T. muris* throughout the years.

larval moults from L1–L4 – adult were not finally defined until the 1980s (Panasar, 1989) (Fig. 2).

GROWING CONCEPTS: FROM ‘NON-RESPONDERS’ TO T CELL DRIVEN SUSCEPTIBILITY AND RESISTANCE

Trichuris muris in the mouse represents a powerful tool with which to explore host–parasite interactions

and the immune response to infection. Over the years it has also become an important model for probing the immune system as the parasitic infection delivers antigen to the mucosa in a physiologically relevant manner. Thus *T. muris* in the mouse has contributed significantly to our understanding of basic immunological principles. One of the strengths of the model system lies in the variation in outcome of infection seen when different strains of mouse are infected.

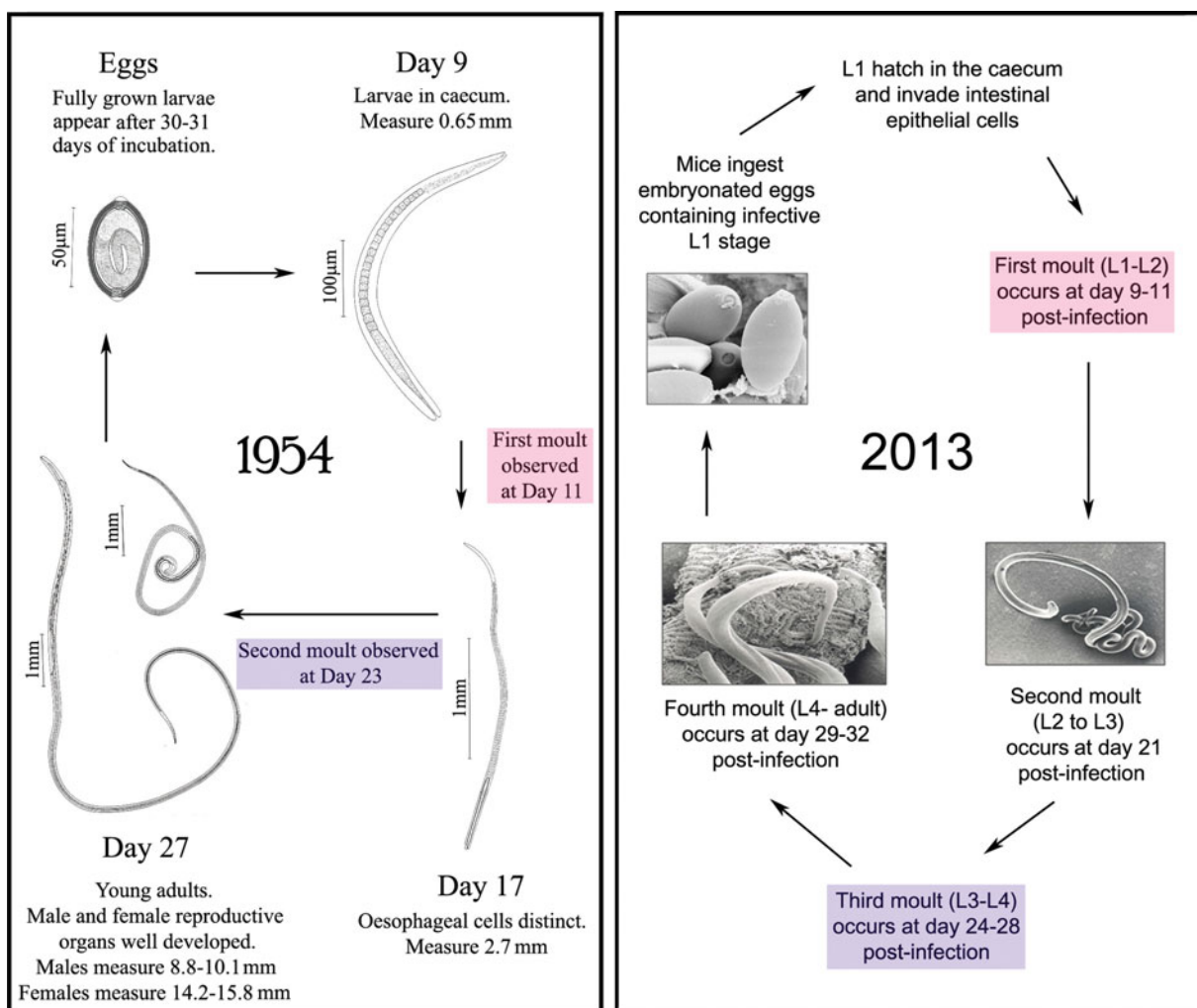


Fig. 2. Development of the *T. muris* life cycle; from its initial documentation to our modern understanding. The left panel shows drawings taken from Fahmy *et al.* (1954) where the life cycle of *T. muris* was initially described. Originally, only two moults were thought to occur, however, the right panel shows our current understanding, based on the life cycle defined by Panesar (1989). Thus *T. muris* goes through the four classical larval moults of nematodes to reach adulthood. The similarities between the two life cycles are highlighted. Scanning electron microscope images were taken at the University of Manchester.

Shikhobalova (1937), Fahmy (1954) and Pike (1965) noted that patent adult worm infections could be established in albino mice (Shikhobalova, 1937; Fahmy, 1954; Pike, 1965). In contrast, Keeling (1961), Worley *et al.* (1962) and Campbell and Collette (1962) reported individual variation in the outcome of infection in that parasites were carried to patency in only some individuals and could not develop to the adult stage in others (Keeling, 1961; Campbell and Collette, 1962; Worley *et al.* 1962). At this stage whether the inability to recover parasites from an infected host represented resistance or ‘insusceptibility’ i.e. an incompatibility between the parasite and host environment was unclear. However, Campbell (1963) added clarity to this issue by conducting experiments where the loss of worms from the Sharp and Dohme albino mouse strain could be prevented by administration of the immunosuppressant cortisone (Campbell, 1963). Thus, the inability

of worms to mature was not due to insusceptibility, but rather represented an active elimination of the parasites by the host prior to the development of the adult stage: the role of the immune response in resistance to infection was established. Building on these observations, Wakelin (1967) described acquired immunity to infection in the outbred Schofield strain of mouse (Wakelin, 1967). In these experiments most individual mice expelled the infection and were thereafter immune to subsequent infections. However, up to 30% of mice failed to expel the primary infection and were susceptible to further infections. Importantly, as observed by Campbell (1963), administration of cortisone suppressed the development of immunity. Wakelin (1970a, b) went on to describe acquired immunity to infection in a number of different strains of mouse, the outbred Schofield, CFW, TO, TF1 and VS/MD and the inbred mouse strain A (Wakelin, 1970a, b). Whilst all

the outbred mouse strains had similar proportions of individuals unable to eliminate the infection, only the inbred mouse strain was uniformly resistant to infection. As before, the use of cortisone enabled patent infections to establish in all mice. At this stage it was troubling to understand the mechanism by which cortisone mediated its effects: did treatment inactivate immunity at a key stage in the parasite's life cycle? Was immunity delayed enabling larval stages of the parasite to develop which were not susceptible to immune attack? Did cortisone treatment during infection induce a state of immunological unresponsiveness to the parasite? The hypothesis of unresponsiveness was taken forward, given the fit with the additional observation that not only was there no effective primary immune response to infection after cortisone treatment, but there was also a failure to eliminate second infections.

The use of a variety of different mouse strains in these experiments also enabled Wakelin (1970a) to introduce the fundamentally important concept of genetic variation in immunity to infection which was later developed through the use of H-2 congenic and H-2 recombinant mouse strains (Else and Wakelin, 1988, 1989, 1990; Else *et al.* 1990). Both major histocompatibility complex linked genes and background genes were shown to contribute to immunity to infection, with the strongest influences denoted by the latter. Although host genetics clearly imparts a significant influence over resistance or susceptibility to infection, a parasite-induced influence is also clear, evidenced by the curious phenomenon of differential responsiveness within a genetically uniform strain of mouse (Lee and Wakelin, 1982). Differential responsiveness was thought to be a parasite-induced property with the later larval stages of the parasite hypothesized to be immunosuppressive. Using drug abbreviation and challenge infections, the ideas of Lee and Wakelin (1982) were further developed (Else *et al.* 1989), although the mechanism of parasite-induced immunomodulation remains unclear even today. Moving through the 1970s and 1980s, the idea that different inbred strains of mouse could be described as 'responders' or 'non-responders' gained popularity, and the underlying components of immune responses to infection studied in detail.

Using passive transfer and adoptive transfer methodologies Selby and Wakelin (1973) showed that both lymphoid cells and serum from immunized mice conferred recipient mice with an enhanced resistance to infection. Serum from immunized mice transferred varying degrees of protection but only if given at the time of infection (Selby and Wakelin, 1973). Interestingly, if the recipient mouse was immunosuppressed, serum transfer had no effect, implying the need for a cellular component within the recipient to interact with the transferred antibody to mediate expulsion (Wakelin, 1975). Surprisingly, serum from cortisone treated mice was also shown to

transfer immunity at levels equivalent to immune sera (Lee and Wakelin, 1982). Lee *et al.* (1983) focused attention specifically on T cells, using the methodologies of the time (nylon wool columns) to enrich mesenteric lymph node cells into non-adherent T cells or adherent B cells. These experiments implicated T cells as being central in mediating worm expulsion: T cell-enriched fractions transferred immunity whilst B cell-enriched populations did not (Lee *et al.* 1983). Ito, in 1991, furthered this understanding describing the failure of athymic nude mice to expel *T. muris* and Koyama *et al.* (1995) showed a failure of mice to expel after CD4⁺ T cell depletion (Ito, 1991; Koyama *et al.* 1995). If the T cell dependency of immunity to infection was now established, exactly how worms were expelled from the gut remained unclear. Lee *et al.* (1983) described the lack of any gross inflammation accompanying worm expulsion and suggested that the intimate association *T. muris* has with its host meant that the parasite would be vulnerable to direct effects of intraepithelial lymphocytes, as opposed to pro-inflammatory effector cells such as the mast cell. It was over two decades later before examples of contributing effector mechanisms were more precisely described.

THE CYTOKINE ERA

The mid-90s saw the beginning of investigations into the key cytokine responses underlying immunity to *T. muris* infection. The discovery of T helper cell subsets by (initially Th1 and Th2) by Mosman and Coffman (1989) revolutionized our understanding of immunity to infection and provided a framework within which to explore resistance and susceptibility to *T. muris* (Mosman and Coffman, 1989). Resistance to *T. muris* infection was strongly linked to the generation of a Th2 immune response, whilst the development of a dominant Th1 response led to host susceptibility and chronic infection (Else *et al.* 1994). Thus, the early concepts of the 1970s and 1980s, suggesting that strains of mouse that fail to clear their infection are 'not responding' was revised with the discovery that 'non-responder' mouse strains actually make very profound immune responses, but of the wrong type to expel the parasite (Else and Grecis, 1991). With the cellular framework of Th1 and Th2 in place, the cortisone studies of the 1960s were also reinterpreted. A single dose of cortisone did not facilitate the development of immunological unresponsiveness, but rather cortisone treatment in a primary infection enabled the parasite to survive to a stage where it facilitated the development of a Th1 response. Thus, susceptibility to secondary infections would not be surprising if Th1 memory is maintained upon a challenge infection.

Initially, research focused on the key Th2 cytokine, IL-4; using anti-IL-4 receptor monoclonal antibodies (Else *et al.* 1994) and later, IL-4 knockout

mice (Bancroft *et al.* 1998) this cytokine was shown to be essential for the development of a Th2 response and thus, resistance to *T. muris*. Furthermore, it was discovered that exogenous IL-4 could be used to induce resistance in susceptible mice, even if given after establishment of the parasite (Else *et al.* 1994). However, the fact that female BALB/c IL-4 knockout mice were still able to expel the parasite suggested that resistance does not completely depend on IL-4 (Bancroft *et al.* 2000). Bancroft *et al.* (2000) ascertained that expulsion in these mice was driven by IL-13, as *in vivo* blocking of this cytokine induced susceptibility. Moreover, the administration of exogenous recombinant IL-13 to male IL-4 knockout BALB/c mice reversed their susceptible phenotype (Bancroft *et al.* 2000). IL-13 null mice were also susceptible to infection with *T. muris*, despite developing a strong Th2 response, whereas IL-4 receptor- α null mice (mice lacking the common signalling receptor for both IL-4 and IL-13) generated a Th1 response and were susceptible (Bancroft *et al.* 1998). These findings suggest that IL-4, not IL-13, is required for the development of a parasite-specific Th2 response, with IL-13 being fundamental to the resolution of a *T. muris* infection and functioning downstream of the Th2 response to induce expulsion.

Early work also investigated the opposing Th1 cytokines IFN- γ and IL-12. Primarily, the key Th1 cytokine, IFN- γ , was shown to be strongly associated with susceptibility (Else *et al.* 1992), and depletion of this cytokine induced resistance in susceptible mice (Else *et al.* 1994). Administration of the Th1-promoting cytokine, IL-12 (D'Andrea *et al.* 1992), was able to switch a normally resistance phenotype to a susceptible one (Bancroft *et al.* 1997), however, concurrently depleting IFN- γ in these mice prevented the induction of susceptibility. These findings suggested that IL-12 induced chronicity is IFN- γ -dependent (Bancroft *et al.* 1997).

As more cytokines were discovered, and transgenic mice developed to explore the impact of each, the simple paradigm revolving around IL-4/IL-13/Th2 and resistance, and IFN- γ /Th1 and susceptibility was challenged and new models evolved integrating multiple cytokine networks. For example, *in vivo* blocking of the pro-inflammatory cytokine TNF- α in resistant C57BL/6 mice resulted in failure to expel the parasite, even in the presence of an on-going Th2 immune response. Additionally, the same treatment in female BALB/c IL-4 knockout mice, which require IL-13 for resistance, also induced susceptibility. These findings lead to the conclusion that TNF- α driven IL-13 is essential for expulsion of *T. muris* (Artis *et al.* 1999a). Knocking out TNF- α receptors, p55 and p57, produced a susceptible phenotype which further highlights a critical role for TNF- α (Hayes *et al.* 2007a). This work helped to evolve the model of resistance by incorporating IL-4, IL-13 and TNF- α . Indeed, Artis *et al.* (1999a)

suggested that IL-4 and IL-13 regulate TNFR expression locally in the gut (Artis *et al.* 1999a). However, more recent work by Hayes *et al.* (2007a, b) has presented a more general role for TNF- α , as exogenous application of a recombinant form of this cytokine was able to augment both Th1 and Th2 parasitic-specific immune responses (Hayes *et al.* 2007b).

IL-10, originally thought of as a Th2 cytokine, but now identified as an anti-inflammatory cytokine made by multiple cell types, including T regulatory cells, Th1 cells, B cells and macrophages, has also been implicated in resistance to *T. muris* infection. Both IL-10 and IL-10/IL-4 knockout mice suffer from a severe IFN- γ -driven colitis-like pathology, develop Th1 immune responses and are susceptible to *T. muris* infection. In contrast, however, double IL-10/IL-12-deficient mice develop Th2 immune responses and are completely resistant to *T. muris*, suggesting that the profound intestinal inflammation that develops in the absence of IL-10 is dependent on IL-12. Moreover, the administration of a broad-spectrum antibiotic in *T. muris*-infected IL-10/IL-4-deficient mice prevented pathology and enhanced survival of the mice, suggesting that an unregulated Th1 response to commensal bacteria was responsible (Schopf *et al.* 2002). Taking the work of Schopf *et al.* further, the importance of IL-13 in the severe phenotype of the *T. muris*-infected IL-10-deficient mouse was explored. Thus Wilson *et al.* (2011) identified a critical role for the IL-13 decoy receptor (IL-13Ra2) in permitting the severe gut inflammation observed post *T. muris* infection, via its ability to attenuate IL-13 activity, enabling the heightened IFN- γ driven inflammation (Wilson *et al.* 2011).

IL-27 has clear structural homology to IL-12, and, in common with this cytokine, is produced by APCs and is able to induce IFN- γ production from naïve T cells (Pflanz *et al.* 2002). Knocking out the major IL-27 signalling complex (WSX-1), which is mainly found on CD4⁺ T cells, demonstrated a role for IL-27 in the generation of Th1 responses during *T. muris* infection. Thus, WSX-1 null mice did not mount a Th1 response to *T. muris*, and instead developed Th2 driven immunity associated with increased numbers of CD4⁺IL-4⁺ T cells and reduced numbers of antigen-stimulated IFN- γ -producing T cells (Bancroft *et al.* 2004). Furthermore, it appeared that the inhibition of Th1 development is upstream of IL-12, as the administration of exogenous recombinant IL-12 to the same mice failed to restore the susceptible phenotype of wild-type mice (Bancroft *et al.* 2004). Interestingly, IL-27 has also been shown to regulate Th1 responses and the production of IFN- γ , as WSX-1 knockout mice infected with the potent inducer of Th1 responses, *Toxoplasma gondii*, display unregulated IFN- γ production and the development of a lethal, T-cell driven inflammatory disease (Villarino *et al.* 2003).

Thus, IL-27 signalling through WSX-1 is able to both regulate and initiate Th1 and Th2 responses.

Other cytokines have also been linked with susceptibility to *T. muris* infection. IL-18 shares many similarities with IL-12 and can also increase IFN- γ production (Ahn *et al.* 1997). However, in the context of *T. muris* infection, recombinant IL-18 induced susceptibility in resistant mice via the down-regulation of IL-4 and IL-13, while IFN- γ levels remained unaltered. These findings were reproduced in IFN- γ knockout mice, providing compelling evidence that IL-18 is not an inducer of IFN- γ , but rather a regulator of Th2 responses (Helmsby *et al.* 2001).

Chemokines, or chemoattractive cytokines, are responsible for guiding the migration of activated effector cells to sites of infection or inflammation, and thus deficiencies in chemokines might predict differences in resistance to *T. muris*. Indeed mice deficient in CCL2, a monocyte chemoattractant fail to expel the parasite (deSchoolmeester *et al.* 2003). However, given the ability of CCL2 to influence the quality of the T helper cell response, there remains a lack of clarity around whether the susceptibility of the CCL2 knockout mouse reflects an impaired leukocyte recruitment to the worm niche, or the development of a dominant Th1 response.

The homing of lymphocytes to mucosal sites is thought to mainly depend on the interaction of $\alpha 4\beta 7$ -integrin on T cells with mucosal adhesion molecule 1 (MAdCAM-1). A more specific targeting to either the small or large intestine has been linked to the expression of CCR9 on T cells and CCL25 on epithelial cells, or mucosal epithelial chemokine (CCL28), respectively (Else, 2002). Surprisingly, the number of T cells infiltrating the gut of infected $\beta 7$ -null mice is not significantly different to that seen in wild-type controls, with $\beta 7$ -null mice remaining resistant to *T. muris*, perhaps due to compensation by other integrins (Artis *et al.* 2000). Moreover, using antibodies to block the $\alpha 4\beta 7$ -MAdCAM-1 interaction also had no effect on resistance of mice (Bell and Else, 2008). In the absence of available $\alpha 4\beta 7$ and $\alpha 4\beta 1$, however, mice that are usually resistant became chronically infected with *T. muris* and displayed a Th1-dominated immune response with decreased numbers of infiltrating eosinophils in the caecum (Bell and Else, 2008). These results suggest that when $\alpha 4\beta 7$ is not available, $\alpha 4\beta 1$ is able to aid the recruitment of leukocytes, particularly eosinophils, to the large intestine.

INVESTIGATING THE IMPORTANCE OF INFECTION LEVEL

The clear associations between Th1-mediated susceptibility and Th2-mediated resistance were discovered in the context of a single high-dose infection. However, work from the 1970s had already

established important differences in the outcome of infection according to the number of eggs given. Wakelin (1973) showed that patent infections develop from less than 15 eggs, but that repeated trickle infection of 10 or 5 eggs given daily for around 2 weeks elicited protective immunity (Wakelin, 1973). Behnke and Wakelin (1973) developed this work further, reporting survival of low-level infections in both outbred laboratory C57BL/6 mice and wild field mice (Behnke and Wakelin, 1973). Building on this basis, the cytokine profiles associated with a low-dose infection were defined (Bancroft *et al.* 1994) and describe strong Th1 responses in the absence of worm expulsion. The use of low-level *T. muris* infections to establish chronic infections in otherwise resistant hosts has become an increasingly important tool in recent years, with the availability of a wide range of transgenic mice on a C57BL/6 background. Normally resistant to infection, C57BL/6 mice can be made susceptible by the delivery of low-dose infections, thus enabling a dissection of factors important in resistance (high dose) and susceptibility (low dose) in the same mouse strain. For example, using the Th1-associated low-dose protocol in IL-12 knockout mice further confirmed the role of IL-12 in a Th1 response, as these mice expelled *T. muris* unlike wild-type controls (Helmsby *et al.* 2001).

THE ISOLATES OF *T. MURIS*

Exploring worm infections in wild mice has given the scientific community insights into how parasites build up in their host and has also yielded new *T. muris* isolates. Wild mice accumulate worms through repeated low-level 'trickle' infections, generating a typically over-dispersed distribution that is also seen in *Trichuris trichiura*-infected humans (Behnke and Wakelin, 1973). Thus, most mice carry a low-level infection of fecund adults with heavy infections confined to a few individuals. Through work conducted in wild mice different isolates of *T. muris* were discovered (Johnston *et al.* 2005). Without doubt, the best characterized isolate is the Edinburgh or E isolate of *T. muris*. This isolate was recovered from a mouse in Edinburgh zoo in 1964. Many labs maintain the parasite by passaging the worm through immune-deficient or immune-suppressed hosts in order to ensure recovery of fecund adults. Interestingly, such a passage protocol removes any selection pressure on the worm to maintain its own mechanisms of immune-suppression. The discovery of isolates of *Trichuris* brought our understanding of these concepts forward and specifically the Sobreda – or S isolate – (Bellaby *et al.* 1995) was shown to be survive in mouse strains which readily expel the E isolate. The survival mechanisms employed by the S isolate were later shown to involve T regulatory cells, with the *in vivo* depletion of T regulatory cells enabling worm expulsion, but at

the cost of an exaggerated gut pathology (D'Elia *et al.* 2009a).

CONCURRENT INFECTIONS: THE IMPACT OF POLYPARASITISM ON IMMUNITY TO INFECTION

In the field, polyparasitism is the norm. Despite this knowledge, the majority of studies in laboratory models of parasitic infection focus on single species infections. The concept of concurrent infections, and the impact that one parasite infection might have on another, has however attracted interest. The early work of Phillips *et al.* (1974) and Phillips and Wakelin (1976) showed that the ability of mice to expel *T. muris* was significantly compromised if they were also infected with *Plasmodium berghei*, *Trypanosoma brucei* or *Babesia* (Phillips *et al.* 1974; Phillips and Wakelin, 1976). Jenkins and Behnke (1977) and Behnke *et al.* (1984) explored this further in the context of the impact that *Heligmosomoides polygyrus* (formally *Nematospiroides dubius*) infection had on *T. muris* infections revealing that *T. muris* worms were more likely to survive to patency in mice which also had a *H. polygyrus* infection (Jenkins and Behnke, 1977; Behnke *et al.* 1984). Later, and in the context of a growing understanding of the importance of T helper cell polarization, dual infections were also explored in the context of Schistosomes and *Trichuris* (Curry *et al.* 1995). Here, mice normally susceptible to *T. muris* infection were found to expel the parasite if co-infected with *Schistosoma mansoni*, owing to increased Th2 responses (Curry *et al.* 1995). Thus, this later work built upon the observational studies of the 1970s, demonstrating the remarkable influence one parasite can have on the outcome of infection with another, even when they occupy completely different niches within their host.

UNDERSTANDING WORM EXPULSION MECHANISMS

Mouse strains that are resistant to *T. muris* usually expel their worm burdens between day 12 and 21 post infection (Blackwell and Else, 2002) and the ability to expel this parasite is known to be directly related to developing a Th2 immune response (Else *et al.* 1994). Following polarization in the local draining lymph nodes (the mesenteric lymph nodes), T cells home to the infected gut where they re-see parasite antigen and secrete the profiles of cytokines that they have been programmed to make at the time of first antigen presentation. Upon re-stimulation with parasite antigen in the gut, Th2 cells secrete cytokines that control local effector cells which enable expulsion of the parasite. IL-4 and IL-13, which act through shared and distinct pathways that are dependent on the type 2 cytokine-associated transcription factor 'signal transducer and activator of transcription 6' (STAT6), appear to be the most critical cytokines for immunity

(Madden *et al.* 2004). IL-4 stimulates fluid secretion in the gut, IL-13 promotes goblet cell responses and both cytokines induce smooth muscle contraction (McKenzie *et al.* 1998; Urban *et al.* 1998). However, the effector cells and molecular mechanisms involved in expulsion of the parasite are yet to be fully defined and multiple effector mechanisms likely exist. Given the niche exploited by *Trichuris* parasites and hence their close relationship with the host intestinal epithelium, it is not surprising that work has focused on the cells, tissues and molecules that are present in this location in the search for, and understanding of, how the parasite is physically expelled from the host.

Effector mechanisms

The contraction of the smooth muscle that lines the gastrointestinal tract is one possible mechanism that aids expulsion of the *T. muris* parasite (reviewed in Khan and Collins, 2006). It has been demonstrated that the immune system can, in fact, mediate muscle contraction. Thus, mice that lack CD4 and MHC II have decreased muscle hypercontractility in response to *Trichinella spiralis* infection (Vallance *et al.* 1999). Furthermore, muscle tissue incubated with IL-4 or IL-13 resulted in a 33% increase in muscle hypercontractility (Akiho *et al.* 2002). Investigations into muscle hypercontractility in *T. muris* infection have also revealed an increase with infection (Khan *et al.* 2003). Moreover, blocking IL-9 resulted in the attenuation of muscle hypercontractility and, further, inhibited expulsion of the parasite (Khan *et al.* 2003). Therefore, muscle hypercontractility may be an important effector mechanism for expelling *T. muris*.

In 2005, a novel explanation for the expulsion of *T. muris* in resistant animals was proposed. Cliffe *et al.* (2005), motivated by the fact that chronic intestinal nematode infections cause altered gut architecture, suggested that increased turnover of epithelial cells in the gut may prevent the parasite from remaining embedded within the host. Specifically, *T. muris* infection is associated with enhanced epithelial stem cell proliferation within the crypts of Lieberkühn in the large intestine, which is mediated by IFN- γ , and results in a massive crypt hyperplasia (Potten *et al.* 1997). The IFN- γ -driven increase in proliferation cannot continue in an unregulated manner, and so *T. muris* infection is also associated with an elevation in apoptosis of epithelial cells in the large intestine. Further complexity in the fine regulation of gut homeostasis is provided by the chemokine CXCL10 which reduces the rate of epithelial cell turnover in a mouse model of colitis (Sasaki *et al.* 2002).

In susceptible animals, e.g. AKR mice, *T. muris* is thought to promote its own survival by inducing the production of IFN- γ , which acts to drive epithelial

cell proliferation (Artis *et al.* 1999b) and also locally induces CXCL10. CXCL10 slows the epithelial turnover, resulting in crypt-cell hyperplasia and an increase in the epithelial niche for the parasite. Further investigations have shown that expression of the enzyme indoleamine 2,3-dioxygenase (IDO) by goblet cells is upregulated during chronic *T. muris* infection, and also by *T. muris* E/S antigens, with IDO slowing epithelial cell turnover and thus promoting worm survival (Bell and Else, 2011). In contrast, resistant mice, e.g. BALB/c mice, counter the nematode by elevating the rate of epithelial cell turnover and displacing the parasite. Increased epithelial cell turnover occurs in an IL-13-dependent manner, as IL-13 knock-out mice on a usually resistant BALB/c genetic background have a slow rate of turnover which resembles susceptible AKR mice (Cliffe *et al.* 2005). The epithelial cell turnover mechanism (coined the 'epithelial escalator') of nematode expulsion has been widely accepted as an effector mechanism in resistance to *T. muris*.

The mucus barrier is the primary defence against invading intestinal pathogens and is composed of products produced by goblet cells in the epithelial lining of the gut. Goblet cell hyperplasia has been linked to the development of a protective Th2 immune response in parasite infections (Bancroft and Grencis, 1998; Else and Finkelman, 1998; Yamauchi *et al.* 2006). Because of this, the roles of goblet cell products, including RELM- β , interlectins and mucins, have been extensively investigated in *T. muris* infection. Through microarray analysis of epithelial genes, resistin-like molecule- β (RELM β) and intelectin-1 and 2 have been found to be upregulated in *T. muris* infection (Datta *et al.* 2005; Artis, 2006). RELM β is a small cysteine-rich protein expressed exclusively by goblet cells in the lung and gastrointestinal tract (Artis *et al.* 2004; Zimmermann *et al.* 2004). RELM β interactions with parasites have been proposed to involve binding to chemosensory structures in the nematode cuticle and thus potentially impairing their ability to optimally sense their surroundings, as well as inhibit nematode chemotaxis (Artis *et al.* 2004).

Intelectin-1 is a 120 kDa disulfide-linked homotrimer expressed in the thymus, heart and intestine, although human intelectin-2 is only in the small intestine (Artis, 2006). Both intelectin-1 and intelectin-2 are upregulated in mice genetically resistant to *T. muris* around the time of expulsion. In contrast in susceptible AKR mice no change in their expression has been noted (Datta *et al.* 2005). As intelectins bind galactofuranosyl-containing residues in bacterial cell walls, it is postulated that they may also bind similar carbohydrates in parasitic nematodes, thus impairing worm fitness (Artis, 2006). Additional theories for the role of intelectins in parasite resistance include indirect effects on other mucin glycoproteins secreted by intestinal goblet cells; a cross-linking function

which results in the formation of a 'glycoprotein cement' around the nematodes and aids their expulsion; broader effects during type 2 inflammation including immune regulation or tissue remodelling (Artis, 2006).

Goblet cell-derived angiogenin 4 (Ang4) is another antimicrobial molecule with potential antihelminthic properties (D'Elia *et al.* 2009b). Part of the RNase superfamily, Ang4 and members of the Ang4 family have been linked to toxicity towards gastrointestinal parasites (Hamann *et al.* 1987). The expression of Ang4 is elevated in mice infected with the Edinburgh (E) isolate of *T. muris* compared with those infected with the Sobreda (S) isolate (D'Elia *et al.* 2009b). Since the E isolate can be expelled by C57BL/6 mice, whereas the S isolate persists to a chronic infection, Ang4 was associated with expulsion of *T. muris* (D'Elia *et al.* 2009b). Further research has shown that Ang4 is also more highly expressed in strains of mice such as BALB/c that are resistant to *T. muris* infection, compared with those that are susceptible to infection, such as AKR, and has been linked to IL-13 production (Forman *et al.* 2012). Despite correlations between goblet cell-derived antimicrobials, such as the intelectins and Ang4, and the timing of worm expulsion, a definitive role for these molecules in the protective immune response to infection, rather than simply representing Th2 correlates, has not been shown and awaits the development of transgenic mice which lack these molecules.

In contrast, the availability of mucin-deficient mice has enabled clear statements to be made around the importance of mucus in worm expulsion. Mucins are gel-forming proteins that form the major component of the mucous barrier and are responsible for its visco-elastic properties (Thornton *et al.* 2008). Firstly it was shown that the Muc2 mucin was upregulated only in mice resistant to *T. muris* infection, and that this correlated with worm expulsion (Hasnain *et al.* 2010). Disappointingly however, Muc2-deficient mice were still able to expel the parasite and displayed unaltered Th2 responses (Hasnain *et al.* 2010). These investigators observed that *de novo* expression in the large intestine of the Muc5ac mucin, which is normally expressed in the airway, stomach and eye mucosa, occurred only in resistant mouse models of *T. muris* infection and not in susceptible mice (Hasnain *et al.* 2010). Subsequently, Muc5ac-deficient mice were infected with *T. muris* and found to be incapable of expelling the parasite, despite generating strong Th2 responses (Hasnain *et al.* 2011). Furthermore, Muc5ac was able to directly decrease the ATP levels of *T. muris* *in vitro*, thus reducing parasite vitality. Remarkably therefore, the expulsion of *T. muris* seems to be critically dependent on the expression of a single type of mucin, Muc5ac, in the gut, possibly induced by Th2-type cytokines.

Effector cells

Th2-driven antiparasite immunity is associated with a caecal mastocytosis, eosinophilia and an elevated parasite-specific IgG1 and IgE. However, a central role in acquired immunity to infection for any of these classic features of helminth infection has been hard to show in studies which focus on the outcome of infection in the absence of each of these responses singularly. Following the ablation of IL-5, the cytokine responsible for the immunological control of eosinophilia, mice usually resistant to *T. muris* remained so, despite a significant decrease in gut eosinophilia (Betts and Else, 1999). Although mast cells play key roles in the expulsion of some intestinal nematodes, such as *T. spiralis*, blocking the stem cell receptor, *c-kit*, which prevents the development of an intestinal mastocytosis, had no effect on the development of resistance in *T. muris*-infected mice. Furthermore, mice from a resistant background and lacking the Fc γ receptor, and thus deficient in any effector function requiring high-affinity IgG or IgE binding, were able to expel the parasite before it reached patency. Therefore, expulsion of *T. muris* does not critically depend on eosinophils, mast cells or mechanisms requiring antibody binding to cells via Fc γ receptors (Betts and Else, 1999) although studies which deplete multiple candidate effector cells have not been performed. The availability of mice genetically deficient in eosinophils added rigour to the early studies. Thus, despite the presence of eosinophils in the MLN correlating with resistance to infection, (Svensson *et al.* 2011), mice deficient in eosinophils (Δ dblGATA-1 mice) were still able to expel *T. muris* (Svensson *et al.* 2011).

Macrophages are pleiotropic cells which are capable of converting between many different phenotypes, and therefore have diverse biological functions, including phagocytosis, the release of cytokines, antigen presentation and tissue repair (Noel *et al.* 2004). The best characterized cells are the potently antimicrobial classically activated macrophages (CAM), induced by lipopolysaccharide (LPS) and the Th1 cytokine, IFN- γ , and which secrete nitric oxide (NO) (Zhao *et al.* 2008). In contrast, alternatively activated macrophages (AAM) are thought to have a role in type 2 immune responses, such as those triggered by extracellular helminth infections including *T. muris*, as they are induced by IL-4 and IL-13 (Gordon, 2003). AAMs produce factors involved in tissue remodelling, as well as increasing the fibrinogenic activity of fibroblasts (Song *et al.* 2000) and promoting angiogenesis and wound repair in acute and chronic inflammation (Kodelja *et al.* 1997). AAMs are characterized by their expression of arginase-1 (which out-competes inducible NO synthase, responsible for metabolizing arginine in CAMs), FIZZ-1/REL μ - α and Ym-1 (Kreider *et al.* 2007). Zhao *et al.* (2008) have recently shown that AAMs are

involved in infection-induced hypercontractility of smooth muscle, and contribute to expulsion of some intestinal nematode infections (Zhao *et al.* 2008). Implicated in immunity to *Nippostrongylus brasiliensis* and *H. polygyrus*, AAMs have yet to have a functional role defined in *T. muris* infection and this may relate to the unique niche within large intestinal epithelial cells occupied by this parasite. Indeed, Bowcutt *et al.* (2011) using a cell-specific targeting strategy, showed that arginase-1 deficiency in macrophages had no effect on resistance to *T. muris* infection (Bowcutt *et al.* 2011). Interestingly however, large numbers of macrophages do infiltrate the gut following an infection with *T. muris*, and distinctly more accumulate in the lamina propria of resistant mice compared with susceptible mice (Little *et al.* 2005). Taken together, this evidence suggests a possible arginase-independent role for macrophages, in the immune response to *T. muris*: a role which is not necessarily focused on immunity but also embraces mucosal healing.

THE QUEST TO FIND THE TH2 DRIVING FORCE

The importance of a Th2 immune response in resistance to *T. muris* is unequivocal, however, it remains unclear how Th2 responses develop within the host. The upstream events in the induction of Th2 responses have been debated for many years (Fig. 3). Originally it was suggested that Th2 responses were a default response in the absence of Th1 inducing conditions, such as those provided by dendritic cell-derived IL-12. Following this, pathogen-associated molecular patterns (PAMPs) were thought to drive Th cell differentiation by binding to pattern recognition receptors (PRRs) on the dendritic cell. However, although, PAMPs which ligate antigen-presenting cells to induce Th1 responses are well established, any nematode PAMP that promotes Th2 responses remain elusive. The emerging field of innate cytokines and innate helper cells opened up a new framework of Th2 induction, with cytokines such as TSLP, IL-25 and IL-33 in the spotlight as factors conditioning antigen-presenting cells to drive Th2 responses. In the context of *T. muris* infection, however, mechanisms underlying Th2 induction remain unclear and likely involve multiple redundant roles for innate cells and the cytokines they secrete in promoting protective Th2 responses, as detailed below. Classically, dendritic cells are key players in determining the generation of Th1 or Th2 immune responses and therefore should be central in the immune response to *T. muris* infection. Surprisingly therefore, an essential role for the dendritic cell has not been established and indeed other innate cells have been put forward as key antigen presenting cells. Cruickshank *et al.* (2009) showed that dendritic cells infiltrate the large intestine significantly earlier in mice resistant to *T. muris* infection compared with

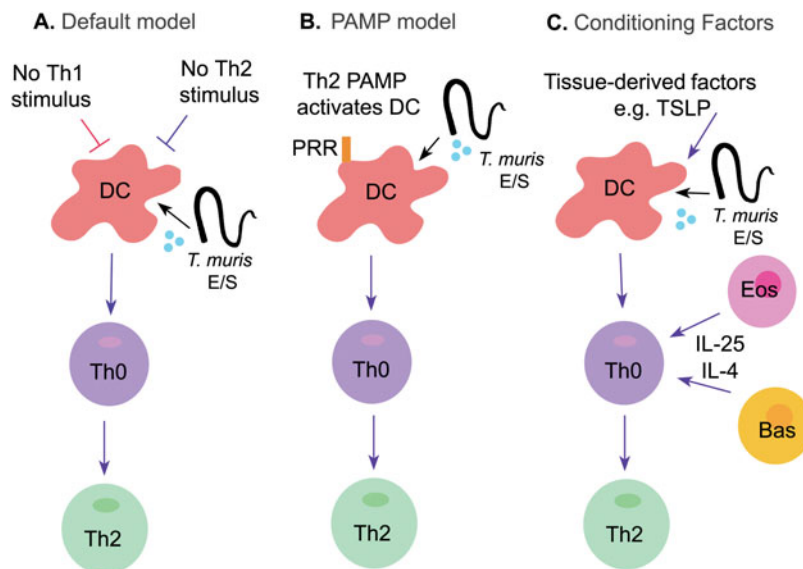


Fig. 3. Developing models for the induction of Th2 responses following *T. muris* infection. (A) Originally, Th2 cell differentiation was thought to occur by ‘default’, in the absence of a Th1-inducing stimulus; (B) Moving forward, it was hypothesized that a Th2 pathogen associated molecular pattern (PAMPs) might drive Th2 cell differentiation by binding to pattern recognition receptors (PRRs), however, any nematode PAMP that promotes Th2 responses is yet to be defined; (C) Modern understanding suggests that endogenous factors, such as alarmins, tissue factors (e.g. TSLP) and cytokines act on DCs to drive Th2 priming. Furthermore, other cells such as eosinophils (EOS) and basophils (BAS) may also help to drive Th2 differentiation through secreting Th2-driving signals e.g. IL-25.

susceptible mice, with this infiltration correlating with an increase in the epithelial-derived chemokines CCL5 and CCL20 (Cruikshank *et al.* 2009). In contrast, recent data has demonstrated that CD103⁺ cells are not required for the expulsion of *T. muris*, as CD103^{-/-} mice are still resistant to infection (Mullaly *et al.* 2011). Therefore, DCs may not be critical in the development of the anti-*Trichuris* Th2 response, although the role, if any, of CD103⁻ DCs remains to be investigated.

Basophil numbers are increased during helminth infection and, using eGFP/IL-4 reporter mice, they have been shown to secrete IL-4 which could promote the generation of protective Th2 responses (Min *et al.* 2004). Perrigoue *et al.* (2009) demonstrate that basophils expressing MHC II are important accessory cells in the generation of Th2 responses to *T. muris* through direct stimulation of CD4⁺ T cells. These investigators show that the depletion of basophils during *T. muris* infection resulted in reduced Th2 cytokine responses but no significant effect on worm expulsion (Perrigoue *et al.* 2009). Therefore, basophils could play a role in the protective responses to *T. muris* infection by contributing to the development of Th2 responses. NK cells have also been shown to have a potential supporting role in IL-13 production, as depleting this cell type causes a delay in parasite expulsion (Hepworth and Grencis, 2009), however whether they are able to initiate Th2 responses is yet to be investigated, and is perhaps unlikely given IL-13 is not a polarizing cytokine.

The recent identification of ‘alarmin’ cytokines (IL-25, IL-33 and TSLP) produced by intestinal

epithelial cells, as well as by immune cells such as macrophages, mast cells, eosinophils and basophils, has triggered studies exploring their role in Th2 responses to helminth infections. IL-25 is a member of the IL-17 family of cytokines and is known to induce IL-5 and IL-13 by an accessory cell population (Fort *et al.* 2001). In 2006, experiments were carried out to show that exogenous IL-25 can induce resistance to *T. muris* in usually susceptible AKR mice, and also that this cytokine was important for reducing pathology during infection (Owyang *et al.* 2006).

Recent work on the IL-1-like cytokine, IL-33, has demonstrated a role in IgE-independent induction of IL-13 from human and mouse mast cells, as well as the optimization of Th2 cytokine and chemokine production in these same cells (Ho *et al.* 2007; Iikura *et al.* 2007). Additionally, IL-33 has been described as a chemo-attractant and potent inducer of Th2 cells, and can cause IL-13 dependent pathological changes in mucosal tissue (Schmitz *et al.* 2005; Komai-Koma *et al.* 2007). In the context of *T. muris* infection, IL-33 has been shown to be produced very early and have a dual role in providing the initial impetus for Th2 polarization and acting at the infection site in a T-cell independent manner to influence the gut tissue response to parasite invasion (Humphreys *et al.* 2008).

Thymic stromal lymphopoietin (TSLP) is also implicated in resistance to *Trichuris* (Taylor *et al.* 2009). Blocking TSLP signalling with anti-TSLP monoclonal antibodies or deletion of TSLP-R in normally resistant mice, resulted in decreased Th2 cytokine expression and a delayed *T. muris* expulsion

(Taylor *et al.* 2009). Furthermore, disruption of TSLP signalling caused increased levels of IFN- γ , IL-17A and IL-12/23p40 accompanied by exacerbated intestinal inflammation. TSLP, however, was not thought to be critical in the induction of parasite-specific Th2 immune responses as Th2 responses were still present in TSLP^{-/-} mice treated with anti-IFN- γ antibodies (Taylor *et al.* 2009), but rather acted by limiting IL-12p40 production (Massacand *et al.* 2009). Interestingly, in the latter study Massacand *et al.* highlight the differences between *T. muris* and other intestinal nematode infections, showing that *H. polygyrus* and *N. brasiliensis* differ from *T. muris* as they can directly inhibit host IL-12p40 through their excretory/secretory antigens and so bypass the need for TSLP (Massacand *et al.* 2009).

Until recently NK cells were the only innate immune cell known to be derived from a lymphoid progenitor. The last 3 years, however, has seen the discovery of a family of innate lymphoid cells (ILCs), with some of these family members thought to be important in potentiating Th2 responses. Type 2 ILCs, also named nuocytes (Neill *et al.* 2010), natural helper cells (Moro *et al.* 2009) or innate type 2 helper cells (Price *et al.* 2010) by their respective discoverers, are lineage negative, respond to IL-25 or IL-33 and produce Th2 cytokines. Original studies showed that type 2 ILCs are important for expulsion of *N. brasiliensis*, as mice lacking the IL-25 or IL-33 receptor had very few type 2 ILCs and could not effectively clear the parasite infection (Neill *et al.* 2010). Further, adoptive transfer of the type 2 ILCs restored immunity to *N. brasiliensis* infection in an IL-13 dependent manner (Neill *et al.* 2010). Whether the type 2 ILC plays a role in *T. muris* infection is yet to be determined. A similar lineage negative innate cell type, the multi-potent progenitor type 2 cell (MPP^{type2}), which responds to IL-25 and IL-33, has also recently been discovered (Saenz *et al.* 2010). Transfer of these cells to IL-25^{-/-} mice infected with *T. muris* was able to reverse the susceptible phenotype caused by lack of IL-25 (Saenz *et al.* 2010). Therefore, type 2 cytokines released from MPP^{type2} cells may be important in promoting protective Th2 responses, likely acting by elevating levels of IL-13 locally in the gut. However, this area of research requires further exploration as the physiological relevance of transferring relatively large numbers of ILCs to mice where they exist as a rare lineage, even post infection, is unclear.

T. MURIS AND ITS RELATIONSHIP WITH GUT FLORA

Around 10¹³ bacteria line the mammalian gastrointestinal tract and the large intestine is especially well colonized. Since this region of the gut is also the niche of the *T. muris* parasite it is perhaps not

surprising that links between the parasite and host flora have been established. A recent study has shown that bacteria are critical for the hatching of *Trichuris* eggs, in a mechanism involving the interaction of bacterial type 1 fimbriae with the opercula poles of *Trichuris* eggs (Hayes *et al.* 2010). Further, antibiotic treatment of susceptible AKR mice resulted in a dramatic reduction in the number of established worms at day 21 p.i., and these mice displayed increased Th2 responses (Hayes *et al.* 2010). Colonization of the intestinal epithelium by the *T. muris* parasite is thought to damage the mucosal barrier. Such damage may potentially lead to leakage of low levels of bacterial products including LPS into the tissue (Helmsby and Grencis, 2003), thus generating a Th1 permissive environment via LPS-induced IFN- γ and hence influencing the development of resistance to the parasite. Such a hypothesis is attractive, as it explains the essential requirement for TLR4 in the development of a chronic *T. muris* infection (Helmsby and Grencis, 2003). Therefore, host flora may be a contributing factor not only in the parasite egg-hatching mechanism, but also in influencing the ability of the host to expel *T. muris*. Recently, newly obtained isolates of *T. muris* have been difficult to establish in laboratory mice (J. Behnke, personal communication). One explanation for this could be the difference in gut flora between wild and laboratory mice, with the flora of laboratory mice being less conducive to triggering the hatching of eggs of parasites freshly isolated from the wild.

WHAT LIES AHEAD ...

Over the years, many important discoveries, concerning both immunity to gut-dwelling nematode parasites and our understanding of the immune system, have been made using the *T. muris* laboratory model. Figure 1 shows a summary timeline of the key milestones in *T. muris* research. The knowledge and understanding gained from the animal model have translated to human Trichuriasis (Faulkner *et al.* 2002), and other intestinal nematode parasite infections (Turner *et al.* 2003). Indeed, human studies show correlations between Th2 responses (parasite-specific IgE; cytokines) and reduced worm burdens with increasing host age, supporting the mouse studies which describe a Th2-mediated resistance to infection. Further, there is no clear evidence in man linking susceptibility to infection with Th1 responses as seen in the mouse models, although high worm burdens correlate with reduced Th2 responses. In addition, the recent demonstration that the pathological, cellular and molecular changes associated with chronic *T. muris* infection correlate with those seen in human IBD (Levison *et al.* 2010) may open up the use of this experimental system to understand IBD.

Despite a good and constantly evolving understanding of the host immune response to *Trichuris* infection, antihelminthic drugs are still the only treatment available in the field. However, drug treatment is less than ideal, as re-infection with the parasite is all too easy. Crude subcutaneous vaccination studies carried out in the 1970s, 1980s and 1990s using worm homogenate or excretory/secretory antigens revealed that vaccination can enhance resistance in resistant strains of mouse (Wakelin and Selby, 1973; Jenkins and Wakelin, 1977, 1983) and can protect otherwise susceptible strains (Else and Wakelin, 1990). Robinson *et al.* (1995) explored this further considering the optimal route of vaccination to elicit protection and identified oral vaccination as a route via which to enhance resistance in some strains of mouse (Robinson *et al.* 1995). Although the immune responses which accompany vaccine-induced resistance have now been described in detail (Dixon *et al.* 2010), disappointing progress has been made towards the identification of target antigens to include in any vaccine of the future. Therefore, there is an urgent unmet need for research in this area.

We still understand little about the biology of the parasite. Apart from defining the conditions required for successful embryonation (Fahmy, 1954) and the definition of the gut flora required for optimal egg hatching 56 years later (Hayes *et al.* 2010), factors impacting on the lifestyle of *Trichuris* are not well understood. For example, we do not know how the parasite forms its syncytial tunnels and we know little about *T. muris* antigens and their roles in worm survival.

The significant investment in sequencing the *T. muris* genome (a current collaboration between Richard Grencis (University of Manchester) and the Wellcome Trust (Sanger Institute) using second-generation sequencing technologies should enable some of these questions to be answered, opening up new avenues of research, including the identification of antigens as possible vaccination targets.

ACKNOWLEDGEMENTS

We would like to thank Professor Richard Grencis for his comments on this manuscript.

FINANCIAL SUPPORT

RMJH is supported by the Wellcome trust (Grant number: 091815).

REFERENCES

Ahn, H.J., Maruo, S., Tomura, M., Mu, J., Hamaoka, T., Nakanishi, K., Clark, S., Kurimoto, M., Okamura, H. and Fujiwara, H. (1997). A mechanism underlying synergy between IL-12 and IFN-gamma-inducing factor in enhanced production of IFN-gamma. *Journal of Immunology* **159**, 2125–2131.

Akiho, H., Blennerhassett, P., Deng, Y. and Collins, S.M. (2002). Role of IL-4, IL-13, and STAT6 in inflammation-induced hypercontractility of murine smooth muscle cells. *American Journal of Physiology – Gastrointestinal and Liver Physiology* **282**, G226–G232.

Araujo, A., Reinhard, K.J., Ferreira, L.F. and Gardner, S.L. (2008). Parasites as probes for prehistoric human migrations? *Trends in Parasitology* **24**, 112–115.

Artis, D. (2006). New weapons in the war on worms: identification of putative mechanisms of immune-mediated expulsion of gastrointestinal nematodes. *International Journal of Parasitology* **36**, 723–733.

Artis, D., Humphreys, N.E., Bancroft, A.J., Rothwell, N.J., Potten, C.S. and Grencis, R.K. (1999a). Tumor necrosis factor alpha is a critical component of interleukin 13-mediated protective T helper cell type 2 responses during helminth infection. *Journal of Experimental Medicine* **190**, 953–962.

Artis, D., Potten, C.S., Else, K.J., Finkelman, F.D. and Grencis, R.K. (1999b). *Trichuris muris*: host intestinal epithelial cell hyperproliferation during chronic infection is regulated by interferon-gamma. *Experimental Parasitology* **92**, 144–153.

Artis, D., Humphreys, N.E., Potten, C.S., Wagner, N., Muller, W., McDermott, J.R., Grencis, R.K. and Else, K.J. (2000). Beta7 integrin-deficient mice: delayed leukocyte recruitment and attenuated protective immunity in the small intestine during enteric helminth infection. *European Journal of Immunology* **30**, 1656–1664.

Artis, D., Wang, M.L., Keilbaugh, S.A., He, W., Brenes, M., Swain, G.P., Knight, P.A., Donaldson, D.D., Lazar, M.A., Miller, H.R., Schad, G.A., Scott, P. and Wu, G.D. (2004). RELMbeta/FIZZ2 is a goblet cell-specific immune-effector molecule in the gastrointestinal tract. *Proceedings of the National Academy of Sciences USA* **101**, 13596–13600.

Bancroft, A.J. and Grencis, R.K. (1998). Th1 and Th2 cells and immunity to intestinal helminths. *Chemical Immunology* **71**, 192–208.

Bancroft, A.J., Else, K.J. and Grencis, R.K. (1994). Low-level infection with *Trichuris muris* significantly affects the polarization of the CD4 response. *European Journal of Immunology* **24**, 3113–3118.

Bancroft, A.J., Else, K.J., Sypek, J.P. and Grencis, R.K. (1997). Interleukin-12 promotes a chronic intestinal nematode infection. *European Journal of Immunology* **27**, 866–870.

Bancroft, A.J., Mckenzie, A.N. and Grencis, R.K. (1998). A critical role for IL-13 in resistance to intestinal nematode infection. *Journal of Immunology* **160**, 3453–3461.

Bancroft, A.J., Artis, D., Donaldson, D.D., Sypek, J.P. and Grencis, R.K. (2000). Gastrointestinal nematode expulsion in IL-4 knockout mice is IL-13 dependent. *European Journal of Immunology* **30**, 2083–2091.

Bancroft, A.J., Humphreys, N.E., Worthington, J.J., Yoshida, H. and Grencis, R.K. (2004). WSX-1: a key role in induction of chronic intestinal nematode infection. *Journal of Immunology* **172**, 7635–7641.

Behnke, J.M. and Wakelin, D. (1973). The survival of *Trichuris muris* in wild populations of its natural hosts. *Parasitology* **67**, 157–164.

Behnke, J.M., Ali, N.M. and Jenkins, S.N. (1984). Survival to patency of low level infections with *Trichuris muris* in mice concurrently infected with *Nematospiroides dubius*. *Annals of Tropical Medicine and Parasitology* **78**, 509–517.

Bell, L.V. and Else, K.J. (2008). Mechanisms of leucocyte recruitment to the inflamed large intestine: redundancy in integrin and addressin usage. *Parasite Immunology* **30**, 163–170.

Bell, L.V. and Else, K.J. (2011). Regulation of colonic epithelial cell turnover by IDO contributes to the innate susceptibility of SCID mice to *Trichuris muris* infection. *Parasite Immunology* **33**, 244–249.

Bellaby, T., Robinson, K., Wakelin, D. and Behnke, J.M. (1995). Isolates of *Trichuris muris* vary in their ability to elicit protective immune responses to infection in mice. *Parasitology* **111**, 353–357.

Betts, C.J. and Else, K.J. (1999). Mast cells, eosinophils and antibody-mediated cellular cytotoxicity are not critical in resistance to *Trichuris muris*. *Parasite Immunology* **21**, 45–52.

Blackwell, N.M. and Else, K.J. (2002). A comparison of local and peripheral parasite-specific antibody production in different strains of mice infected with *Trichuris muris*. *Parasite Immunology* **24**, 203–211.

Bowcutt, R., Bell, L.V., Little, M., Wilson, J., Booth, C., Murray, P.J., Else, K.J. and Cruickshank, S.M. (2011). Arginase-1-expressing macrophages are dispensable for resistance to infection with the gastrointestinal helminth *Trichuris muris*. *Parasite Immunology* **33**, 411–420.

Campbell, W.C. (1963). Spontaneous cure in *Trichuris muris* infections in albino mice and its suppression by cortisone. *Journal of Parasitology* **49**, 628–632.

- Campbell, W. C. and Collette, J. V. (1962). Effect of cortisone upon infection with *Trichuris muris* in albino mice. *Journal of Parasitology* **48**, 933–934.
- Cliffe, L. J., Humphreys, N. E., Lane, T. E., Potten, C. S., Booth, C. and Grecnis, R. K. (2005). Accelerated intestinal epithelial cell turnover: a new mechanism of parasite expulsion. *Science* **308**, 1463–1465.
- Cruikshank, S. M., Deschoolmeester, M. L., Svensson, M., Howell, G., Bazakou, A., Logunova, L., Little, M. C., English, N., Mack, M., Grecnis, R. K., Else, K. J. and Carding, S. R. (2009). Rapid dendritic cell mobilization to the large intestinal epithelium is associated with resistance to *Trichuris muris* infection. *Journal of Immunology* **182**, 3055–3062.
- Curry, A. J., Else, K. J., Jones, F., Bancroft, A., Grecnis, R. K. and Dunne, D. W. (1995). Evidence that cytokine-mediated immune interactions induced by *Schistosoma mansoni* alter disease outcome in mice concurrently infected with *Trichuris muris*. *Journal of Experimental Medicine* **181**, 769–774.
- D'andrea, A., Rengaraju, M., Valiante, N. M., Chehimi, J., Kubin, M., Aste, M., Chan, S. H., Kobayashi, M., Young, D., Nickbarg, E., Chizzonite, R., Wolf, S. F. and Trinchieri, G. (1992). Production of natural killer cell stimulatory factor (interleukin 12) by peripheral blood mononuclear cells. *Journal of Experimental Medicine* **176**, 1387–1398.
- Datta, R., Deschoolmeester, M. L., Hedeler, C., Paton, N. W., Brass, A. M. and Else, K. J. (2005). Identification of novel genes in intestinal tissue that are regulated after infection with an intestinal nematode parasite. *Infection and Immunity* **73**, 4025–4033.
- Davaine, C. J. (1858). Recherches sur le développement et la propagation du Trichocephale de l'homme et de l'Ascaride lombricoïde. *Comptes rendus de l'Académie des sciences* **46**, 1217–1219.
- D'elia, R., Behnke, J. M., Bradley, J. E. and Else, K. J. (2009a). Regulatory T cells: a role in the control of helminth-driven intestinal pathology and worm survival. *Journal of Immunology* **182**, 2340–2348.
- D'elia, R., Deschoolmeester, M. L., Zeef, L. A., Wright, S. H., Pemberton, A. D. and Else, K. J. (2009b). Expulsion of *Trichuris muris* is associated with increased expression of angiogenin 4 in the gut and increased acidity of mucins within the goblet cell. *BMC Genomics* **10**, 492.
- Deschoolmeester, M. L., Little, M. C., Rollins, B. J. and Else, K. J. (2003). Absence of CC chemokine ligand 2 results in an altered Th1/Th2 cytokine balance and failure to expel *Trichuris muris* infection. *Journal of Immunology* **170**, 4693–4700.
- Dixon, H., Little, M. C. and Else, K. J. (2010). Characterisation of the protective immune response following subcutaneous vaccination of susceptible mice against *Trichuris muris*. *International Journal of Parasitology* **40**, 683–693.
- Else, K. J. (2002). Chemokines and leucocyte migration in parasitic disease. *Parasite Immunology* **24**, 281–283.
- Else, K. J. and Finkelman, F. D. (1998). Intestinal nematode parasites, cytokines and effector mechanisms. *International Journal of Parasitology* **28**, 1145–1158.
- Else, K. J. and Grecnis, R. K. (1991). Helper T-cell subsets in mouse trichuriasis. *Parasitology Today (Personal ed)* **7**, 313–316.
- Else, K. and Wakelin, D. (1988). The effects of H-2 and non-H-2 genes on the expulsion of the nematode *Trichuris muris* from inbred and congenic mice. *Parasitology* **96**, 543–550.
- Else, K. and Wakelin, D. (1989). Genetic variation in the humoral immune responses of mice to the nematode *Trichuris muris*. *Parasite Immunology* **11**, 77–90.
- Else, K. J. and Wakelin, D. (1990). Genetically-determined influences on the ability of poor responder mice to respond to immunization against *Trichuris muris*. *Parasitology* **100**, 479–489.
- Else, K. J., Wakelin, D. and Roach, T. I. (1989). Host predisposition to trichuriasis: the mouse–*T. muris* model. *Parasitology* **98**(Pt 2), 275–282.
- Else, K. J., Wakelin, D., Wassom, D. L. and Hauda, K. M. (1990). The influence of genes mapping within the major histocompatibility complex on resistance to *Trichuris muris* infections in mice. *Parasitology* **101**, 61–67.
- Else, K. J., Hultner, L. and Grecnis, R. K. (1992). Modulation of cytokine production and response phenotypes in murine trichuriasis. *Parasite Immunology* **14**, 441–449.
- Else, K. J., Finkelman, F. D., Maliszewski, C. R. and Grecnis, R. K. (1994). Cytokine-mediated regulation of chronic intestinal helminth infection. *Journal of Experimental Medicine* **179**, 347–351.
- Fahmy, M. A. (1954). An investigation on the life cycle of *Trichuris muris*. *Parasitology* **44**, 50–57.
- Faulkner, H., Turner, J., Kamgno, J., Pion, S. D., Boussinesq, M. and Bradley, J. E. (2002). Age- and infection intensity-dependent cytokine and antibody production in human trichuriasis: the importance of IgE. *Journal of Infectious Diseases* **185**, 665–672.
- Forman, R. A., Deschoolmeester, M. L., Hurst, R. J., Wright, S. H., Pemberton, A. D. and Else, K. J. (2012). The goblet cell is the cellular source of the anti-microbial angiogenin 4 in the large intestine post *Trichuris muris* infection. *PLoS ONE* **7**, e42248.
- Fort, M. M., Cheung, J., Yen, D., Li, J., Zurawski, S. M., Lo, S., Menon, S., Clifford, T., Hunte, B., Lesley, R., Muchamuel, T., Hurst, S. D., Zurawski, G., Leach, M. W., Gorman, D. M. and Rennick, D. M. (2001). IL-25 induces IL-4, IL-5, and IL-13 and Th2-associated pathologies *in vivo*. *Immunity* **15**, 985–995.
- Gordon, S. (2003). Alternative activation of macrophages. *Nature Reviews Immunology* **3**, 23–35.
- Hamann, K. J., Barker, R. L., Loegering, D. A. and Gleich, G. J. (1987). Comparative toxicity of purified human eosinophil granule proteins for newborn larvae of *Trichinella spiralis*. *Journal of Parasitology* **73**, 523–529.
- Hasnain, S. Z., Wang, H., Ghia, J. E., Haq, N., Deng, Y., Velcich, A., Grecnis, R. K., Thornton, D. J. and Khan, W. I. (2010). Mucin gene deficiency in mice impairs host resistance to an enteric parasitic infection. *Gastroenterology* **138**, 1763–1771.
- Hasnain, S. Z., Evans, C. M., Roy, M., Gallagher, A. L., Kindrachuk, K. N., Barron, L., Dickey, B. F., Wilson, M. S., Wynn, T. A., Grecnis, R. K. and Thornton, D. J. (2011). Muc5ac: a critical component mediating the rejection of enteric nematodes. *Journal of Experimental Medicine* **208**, 893–900.
- Hayes, K. S., Bancroft, A. J. and Grecnis, R. K. (2007a). The role of TNF-alpha in *Trichuris muris* infection I: influence of TNF-alpha receptor usage, gender and IL-13. *Parasite Immunology* **29**, 575–582.
- Hayes, K. S., Bancroft, A. J. and Grecnis, R. K. (2007b). The role of TNF-alpha in *Trichuris muris* infection II: global enhancement of ongoing Th1 or Th2 responses. *Parasite Immunology* **29**, 583–594.
- Hayes, K. S., Bancroft, A. J., Goldrick, M., Portsmouth, C., Roberts, I. S. and Grecnis, R. K. (2010). Exploitation of the intestinal microflora by the parasitic nematode *Trichuris muris*. *Science* **328**, 1391–1394.
- Helmby, H. and Grecnis, R. K. (2003). Essential role for TLR4 and MyD88 in the development of chronic intestinal nematode infection. *European Journal of Immunology* **33**, 2974–2979.
- Helmby, H., Takeda, K., Akira, S. and Grecnis, R. K. (2001). Interleukin (IL)-18 promotes the development of chronic gastrointestinal helminth infection by downregulating IL-13. *Journal of Experimental Medicine* **194**, 355–364.
- Hepworth, M. R. and Grecnis, R. K. (2009). Disruption of Th2 immunity results in a gender-specific expansion of IL-13 producing accessory NK cells during helminth infection. *Journal of Immunology* **183**, 3906–3914.
- Ho, L. H., Ohno, T., Oboki, K., Kajiwara, N., Suto, H., Iikura, M., Okayama, Y., Akira, S., Saito, H., Galli, S. J. and Nakae, S. (2007). IL-33 induces IL-13 production by mouse mast cells independently of IgE-FcεRI signals. *Journal of Leukocyte Biology* **82**, 1481–1490.
- Humphreys, N. E., Xu, D., Hepworth, M. R., Liew, F. Y. and Grecnis, R. K. (2008). IL-33, a potent inducer of adaptive immunity to intestinal nematodes. *Journal of Immunology* **180**, 2443–2449.
- Iikura, M., Suto, H., Kajiwara, N., Oboki, K., Ohno, T., Okayama, Y., Saito, H., Galli, S. J. and Nakae, S. (2007). IL-33 can promote survival, adhesion and cytokine production in human mast cells. *Laboratory Investigation; a Journal of Technical Methods and Pathology* **87**, 971–978.
- Ito, Y. (1991). The absence of resistance in congenitally athymic nude mice toward infection with the intestinal nematode, *Trichuris muris*: resistance restored by lymphoid cell transfer. *International Journal of Parasitology* **21**, 65–69.
- Jenkins, S. N. and Behnke, J. M. (1977). Impairment of primary expulsion of *Trichuris muris* in mice concurrently infected with *Nematospiroides dubius*. *Parasitology* **75**, 71–78.
- Jenkins, S. N. and Wakelin, D. (1977). The source and nature of some functional antigens of *Trichuris muris*. *Parasitology* **74**, 153–161.
- Jenkins, S. N. and Wakelin, D. (1983). Functional antigens of *Trichuris muris* released during *in vitro* maintenance: their immunogenicity and partial purification. *Parasitology* **86**, 73–82.
- Johnston, C. E., Bradley, J. E., Behnke, J. M., Matthews, K. R. and Else, K. J. (2005). Isolates of *Trichuris muris* elicit different adaptive immune responses in their murine host. *Parasite Immunology* **27**, 69–78.
- Keeling, J. E. (1961). Experimental trichuriasis. I. Antagonism between *Trichuris muris* and *Aspiculuris tetraptera* in the albino mouse. *Journal of Parasitology* **47**, 641–646.
- Khan, W. I. and Collins, S. M. (2006). Gut motor function: immunological control in enteric infection and inflammation. *Clinical and Experimental Immunology* **143**, 389–397.

- Khan, W.I., Richard, M., Akiho, H., Blennerhasset, P.A., Humphreys, N.E., Grecnis, R.K., Van Snick, J. and Collins, S.M. (2003). Modulation of intestinal muscle contraction by interleukin-9 (IL-9) or IL-9 neutralization: correlation with worm expulsion in murine nematode infections. *Infection and Immunity* **71**, 2430–2438.
- Kodelja, V., Muller, C., Tenorio, S., Schebesch, C., Orfanos, C.E. and Goerdts, S. (1997). Differences in angiogenic potential of classically vs alternatively activated macrophages. *Immunobiology* **197**, 478–493.
- Komai-Koma, M., Xu, D., Li, Y., McKenzie, A.N., McInnes, I.B. and Liew, F.Y. (2007). IL-33 is a chemoattractant for human Th2 cells. *European Journal of Immunology* **37**, 2779–2786.
- Koyama, K., Tamauchi, H. and Ito, Y. (1995). The role of CD4+ and CD8+ T cells in protective immunity to the murine nematode parasite *Trichuris muris*. *Parasite Immunology* **17**, 161–165.
- Kreider, T., Anthony, R.M., Urban, J.F., Jr. and Gause, W.C. (2007). Alternatively activated macrophages in helminth infections. *Current Opinion in Immunology* **19**, 448–453.
- Lee, T.D. and Wakelin, D. (1982). Cortisone-induced immunotolerance to nematode infection in CBA/Ca mice. I. Investigation of the defect in the protective response. *Immunology* **47**, 227–232.
- Lee, T.D., Wakelin, D. and Grecnis, R.K. (1983). Cellular mechanisms of immunity to the nematode *Trichuris muris*. *International Journal of Parasitology* **13**, 349–353.
- Levison, S.E., McLaughlin, J.T., Zeef, L.A., Fisher, P., Grecnis, R.K. and Pennock, J.L. (2010). Colonic transcriptional profiling in resistance and susceptibility to trichuriasis: phenotyping a chronic colitis and lessons for iatrogenic helminthiasis. *Inflammatory Bowel Diseases* **16**, 2065–2079.
- Little, M.C., Bell, L.V., Cliffe, L.J. and Else, K.J. (2005). The characterization of intraepithelial lymphocytes, lamina propria leukocytes, and isolated lymphoid follicles in the large intestine of mice infected with the intestinal nematode parasite *Trichuris muris*. *Journal of Immunology* **175**, 6713–6722.
- Madden, K.B., Yeung, K.A., Zhao, A., Gause, W.C., Finkelman, F.D., Katona, I.M., Urban, J.F., Jr. and Shea-Donohue, T. (2004). Enteric nematodes induce stereotypic STAT6-dependent alterations in intestinal epithelial cell function. *Journal of Immunology* **172**, 5616–5621.
- Massacand, J.C., Stettler, R.C., Meier, R., Humphreys, N.E., Grecnis, R.K., Marslak, B.J. and Harris, N.L. (2009). Helminth products bypass the need for TSLP in Th2 immune responses by directly modulating dendritic cell function. *Proceedings of the National Academy of Sciences USA* **106**, 13968–13973.
- McKenzie, G.J., Bancroft, A., Grecnis, R.K. and McKenzie, A.N. (1998). A distinct role for interleukin-13 in Th2-cell-mediated immune responses. *Current Biology* **8**, 339–342.
- Min, B., Prout, M., Hu-Li, J., Zhu, J., Jankovic, D., Morgan, E.S., Urban, J.F., Jr., Dvorak, A.M., Finkelman, F.D., Legros, G. and Paul, W.E. (2004). Basophils produce IL-4 and accumulate in tissues after infection with a Th2-inducing parasite. *Journal of Experimental Medicine* **200**, 507–517.
- Moro, K., Yamada, T., Tanabe, M., Takeuchi, T., Ikawa, T., Kawamoto, H., Furusawa, J., Ohtani, M., Fujii, H. and Koyasu, S. (2009). Innate production of T(H)2 cytokines by adipose tissue-associated c-Kit(+)Sca-1(+) lymphoid cells. *Nature* **463**, 540–544.
- Mosman, T.R. and Coffman, R.L. (1989). TH1 and TH2 cells: different patterns of lymphokine secretion lead to different functional properties. *Annual Review of Immunology* **1**, 145–173.
- Mullaly, S.C., Burrows, K., Antignano, F. and Zaph, C. (2011). Assessing the role of CD103 in immunity to an intestinal helminth parasite. *PLoS ONE* **6**, e19580.
- Neill, D.R., Wong, S.H., Bellosi, A., Flynn, R.J., Daly, M., Langford, T.K., Bucks, C., Kane, C.M., Fallon, P.G., Pannell, R., Jolin, H.E. and McKenzie, A.N. (2010). Nuocytes represent a new innate effector leukocyte that mediates type-2 immunity. *Nature* **464**, 1367–1370.
- Noel, W., Raes, G., Hassanzadeh Ghassabeh, G., De Baetselier, P. and Beschin, A. (2004). Alternatively activated macrophages during parasite infections. *Trends in Parasitology* **20**, 126–133.
- Owyang, A.M., Zaph, C., Wilson, E.H., Guild, K.J., McClanahan, T., Miller, H.R., Cua, D.J., Goldschmidt, M., Hunter, C.A., Kastelein, R.A. and Artis, D. (2006). Interleukin 25 regulates type 2 cytokine-dependent immunity and limits chronic inflammation in the gastrointestinal tract. *Journal of Experimental Medicine* **203**, 843–849.
- Panesar, T.S. (1989). The moulting pattern in *Trichuris muris* (Nematoda Trichuroidea). *Canadian Journal of Zoology* **67**, 2340–2343.
- Perrigoue, J.G., Saenz, S.A., Siracusa, M.C., Allenspach, E.J., Taylor, B.C., Giacomini, P.R., Nair, M.G., Du, Y., Zaph, C., Van Rooijen, N., Comeau, M.R., Pearce, E.J., Laufer, T.M. and Artis, D. (2009). MHC class II-dependent basophil-CD4+ T cell interactions promote T(H)2 cytokine-dependent immunity. *Nature Immunology* **10**, 697–705.
- Pflanz, S., Timans, J.C., Cheung, J., Rosales, R., Kanzler, H., Gilbert, J., Hibbert, L., Churakova, T., Travis, M., Vaisberg, E., Blumenschein, W.M., Mattson, J.D., Wagner, J.L., To, W., Zurawski, S., McClanahan, T.K., Gorman, D.M., Bazan, J.F., De Waal Malefyt, R., Rennick, D. and Kastelein, R.A. (2002). IL-27, a heterodimeric cytokine composed of EB13 and p28 protein, induces proliferation of naive CD4(+) T cells. *Immunity* **16**, 779–790.
- Phillips, R.S. and Wakelin, D. (1976). *Trichuris muris*: effect of concurrent infections with rodent piroplasms on immune expulsion from mice. *Experimental Parasitology* **39**, 95–100.
- Phillips, R.S., Selby, G.R. and Wakelin, D. (1974). The effect of *Plasmodium berghei* and *Trypanosoma brucei* infections on the immune expulsion of the nematode *Trichuris muris* from mice. *International Journal of Parasitology* **4**, 409–415.
- Pike, E.H. (1965). Bionomic, blood, and chromium51 investigations of *Trichuris muris* and studies with two related species. *Dissertation Abstracts* **25**, 7430–7431.
- Potten, C.S., Booth, C. and Pritchard, D.M. (1997). The intestinal epithelial stem cell: the mucosal governor. *International Journal of Experimental Pathology* **78**, 219–243.
- Price, A.E., Liang, H.E., Sullivan, B.M., Reinhardt, R.L., Eisle, C.J., Erle, D.J. and Locksley, R.M. (2010). Systemically dispersed innate IL-13-expressing cells in type 2 immunity. *Proceedings of the National Academy of Sciences USA* **107**, 11489–11494.
- Robinson, K., Bellaby, T. and Wakelin, D. (1995). Efficacy of oral vaccination against the murine intestinal parasite *Trichuris muris* is dependent upon host genetics. *Infection and Immunity* **63**, 1762–1766.
- Saenz, S.A., Siracusa, M.C., Perrigoue, J.G., Spencer, S.P., Urban, J.F., Jr., Tocker, J.E., Budelsky, A.L., Kleinschek, M.A., Kastelein, R.A., Kambayashi, T., Bhandoola, A. and Artis, D. (2010). IL25 elicits a multipotent progenitor cell population that promotes T(H)2 cytokine responses. *Nature* **464**, 1362–1366.
- Sasaki, S., Yoneyama, H., Suzuki, K., Suriki, H., Aiba, T., Watanabe, S., Kawachi, Y., Kawachi, H., Shimizu, F., Matsushima, K., Asakura, H. and Narumi, S. (2002). Blockade of CXCL10 protects mice from acute colitis and enhances crypt cell survival. *European Journal of Immunology* **32**, 3197–3205.
- Schmitz, J., Owyang, A., Oldham, E., Song, Y., Murphy, E., McClanahan, T.K., Zurawski, G., Moshrefi, M., Qin, J., Li, X., Gorman, D.M., Bazan, J.F. and Kastelein, R.A. (2005). IL-33, an interleukin-1-like cytokine that signals via the IL-1 receptor-related protein ST2 and induces T helper type 2-associated cytokines. *Immunity* **23**, 479–490.
- Schopf, L.R., Hoffmann, K.F., Cheever, A.W., Urban, J.F., Jr. and Wynn, T.A. (2002). IL-10 is critical for host resistance and survival during gastrointestinal helminth infection. *Journal of Immunology* **168**, 2383–2392.
- Selby, G.R. and Wakelin, D. (1973). Transfer of immunity against *Trichuris muris* in the mouse by serum and cells. *International Journal of Parasitology* **3**, 717–722.
- Shikhobalova, N.P. (1937). Experimental study of the chemotherapy of trichocephalosis. I. Trichocephalosis of white mice. *Medskya Parazit* **6**, 389–400.
- Song, E., Ouyang, N., Horbelt, M., Antus, B., Wang, M. and Exton, M.S. (2000). Influence of alternatively and classically activated macrophages on fibrogenic activities of human fibroblasts. *Cellular Immunology* **204**, 19–28.
- Svensson, M., Bell, L., Little, M.C., Deschoolmeester, M., Locksley, R.M. and Else, K.J. (2011). Accumulation of eosinophils in intestine-draining mesenteric lymph nodes occurs after *Trichuris muris* infection. *Parasite Immunology* **33**, 1–11.
- Taylor, B.C., Zaph, C., Troy, A.E., Du, Y., Guild, K.J., Comeau, M.R. and Artis, D. (2009). TSLP regulates intestinal immunity and inflammation in mouse models of helminth infection and colitis. *Journal of Experimental Medicine* **206**, 655–667.
- Thornton, D.J., Rousseau, K. and McGuckin, M.A. (2008). Structure and function of the polymeric mucins in airways mucus. *Annual Review of Physiology* **70**, 459–486.
- Turner, J.D., Faulkner, H., Kamgno, J., Cormont, F., Van Snick, J., Else, K.J., Grecnis, R.K., Behnke, J.M., Boussinesq, M. and Bradley, J.E. (2003). Th2 cytokines are associated with reduced worm burdens in a human intestinal helminth infection. *Journal of Infectious Diseases* **188**, 1768–1775.
- Urban, J.F., Jr., Noben-Trauth, N., Donaldson, D.D., Madden, K.B., Morris, S.C., Collins, M. and Finkelman, F.D. (1998). IL-13, IL-4, Ralpha, and Stat6 are required for the expulsion of the gastrointestinal nematode parasite *Nippostrongylus brasiliensis*. *Immunity* **8**, 255–264.

- Vallance, B. A., Galeazzi, F., Collins, S. M. and Snider, D. P. (1999). CD4T cells and major histocompatibility complex class II expression influence worm expulsion and increased intestinal muscle contraction during *Trichinella spiralis* infection. *Infection and Immunity* **67**, 6090–6097.
- Villarino, A., Hibbert, L., Lieberman, L., Wilson, E., Mak, T., Yoshida, H., Kastelein, R. A., Saris, C. and Hunter, C. A. (2003). The IL-27R (WSX-1) is required to suppress T cell hyperactivity during infection. *Immunity* **19**, 645–655.
- Wakelin, D. (1967). Acquired immunity to *Trichuris muris* in the albino laboratory mouse. *Parasitology* **57**, 515–524.
- Wakelin, D. (1970a). The stimulation of immunity and the induction of unresponsiveness to *Trichuris muris* in various strains of laboratory mice. *Zeitschrift für Parasitenkunde* **35**, 162–168.
- Wakelin, D. (1970b). Studies on the immunity of albino mice to *Trichuris muris*. Suppression of immunity by cortisone acetate. *Parasitology* **60**, 229–237.
- Wakelin, D. (1973). The stimulation of immunity to *Trichuris muris* in mice exposed to low-level infections. *Parasitology* **66**, 181–189.
- Wakelin, D. (1975). Immune expulsion of *Trichuris muris* from mice during a primary infection: analysis of the components involved. *Parasitology* **70**, 397–405.
- Wakelin, D. and Selby, G. R. (1973). Functional antigens of *Trichuris muris*. The stimulation of immunity by vaccination of mice with somatic antigen preparations. *International Journal of Parasitology* **3**, 711–715.
- Wilson, M. S., Ramalingam, T. R., Rivollier, A., Shenderov, K., Mentink-Kane, M. M., Madala, S. K., Cheever, A. W., Artis, D., Kelsall, B. L. and Wynn, T. A. (2011). Colitis and intestinal inflammation in IL10^{-/-} mice results from IL-13Ralpha2-mediated attenuation of IL-13 activity. *Gastroenterology* **140**, 254–264.
- Worley, D. E., Meisenhelder, J. E., Sheffield, H. G. and Thompson, P. E. (1962). Experimental studies on *Trichuris muris* in mice with an appraisal of its use for evaluating anthelmintics. *Journal of Parasitology* **48**, 433–437.
- Yamauchi, J., Kawai, Y., Yamada, M., Uchikawa, R., Tegoshi, T. and Arizono, N. (2006). Altered expression of goblet cell- and mucin glycosylation-related genes in the intestinal epithelium during infection with the nematode *Nippostrongylus brasiliensis* in rat. *Acta Pathologica Microbiologica et Immunologica Scandinavica* **114**, 270–278.
- Zhao, A., Urban, J. F., Jr., Anthony, R. M., Sun, R., Stiltz, J., Van Rooijen, N., Wynn, T. A., Gause, W. C. and Shea-Donohue, T. (2008). Th2 cytokine-induced alterations in intestinal smooth muscle function depend on alternatively activated macrophages. *Gastroenterology* **135**, 217–225, e211.
- Zimmermann, N., Mishra, A., King, N. E., Fulkerson, P. C., Doepker, M. P., Nikolaidis, N. M., Kindinger, L. E., Moulton, E. A., Aronow, B. J. and Rothenberg, M. E. (2004). Transcript signatures in experimental asthma: identification of STAT6-dependent and -independent pathways. *Journal of Immunology* **172**, 1815–1824.