

Pearls

Bringing Culture to the Uncultured: *Coxiella burnetii* and Lessons for Obligate Intracellular Bacterial Pathogens

Anders Omsland¹, Ted Hackstadt¹, Robert A. Heinzen^{2*}

1 Host-Parasite Interactions Section, Laboratory of Intracellular Parasites, Rocky Mountain Laboratories, National Institute of Allergy and Infectious Diseases, National Institutes of Health, Hamilton, Montana, United States of America, **2** Coxiella Pathogenesis Section, Laboratory of Intracellular Parasites, Rocky Mountain Laboratories, National Institute of Allergy and Infectious Diseases, National Institutes of Health, Hamilton, Montana, United States of America

Introduction

Human diseases caused by obligate intracellular bacterial pathogens result in significant morbidity and mortality. Obligate intracellular bacteria that replicate in the cytoplasm of host endothelial cells include *Rickettsia prowazekii*, *Rickettsia rickettsii*, and *Orientia tsutsugamushi* (etiologic agents of epidemic typhus, Rocky Mountain spotted fever, and scrub typhus, respectively). Residing in specialized vacuolar compartments are *Anaplasma phagocytophilum* and *Ehrlichia chaffeensis* (agents of febrile illnesses that have tropisms for neutrophils and monocytes, respectively) and *Chlamydia trachomatis*, which targets mucosal epithelia and causes blinding trachoma and sexually transmitted diseases. *Coxiella burnetii* preferentially colonizes mononuclear phagocytes during natural infection where it inhabits a specialized vacuole with properties of a phagolysosome [1]. The pathogen causes a debilitating influenza-like illness in humans called Q (query) fever, a disease that has received recent notoriety due to a large outbreak in the Netherlands [2]. The absolute reliance of obligates on a eucaryotic host cell for growth imposes significant experimental constraints, not the least of which is difficulty in establishing pathogen genetic systems. However, *C. burnetii* was recently liberated from its host cell by a medium that supports axenic (host cell-free) growth. Here, we provide a brief overview of the systematic approach used in *C. burnetii* media development and discuss how insight gained from this success could facilitate development of axenic media for other obligate intracellular bacterial pathogens.

Known Physiology and Cellular Microbiology Greased the Wheels for *C. burnetii* Axenic Media Development

Prior metabolic studies of host cell-free *C. burnetii* and knowledge of pathogen-host interactions provided a foundation on which to base initial media formulations. The critical finding that the *Coxiella*-containing vacuole (CCV) resembles a phagolysosome [3] led to several reports showing metabolic activity of purified bacteria was optimal under moderately acidic conditions (approx. pH 5) [4]. The mechanistic basis of “acid activation” of *C. burnetii* metabolism is unresolved although it may involve stimulation of proton symporters [5]. Pathogen-host interactions revealed that the CCV is highly fusogenic with fluid phase endosomes, but impermeable to small molecules within the cytosol [1], suggesting the ion composition of the CCV might reflect that of the serum/tissue culture medium, i.e., low concentration of K⁺ (~5 mM) and high concentrations of Na⁺ (~145 mM) and Cl⁻ (~110 mM). Furthermore, the CCV fuses with autophagosomes, a process predicted to deliver proteinacious material that can be degraded into peptides and amino acids by the hydrolytic activity of the vacuole [6]. Indeed, early acid activation studies showed a preference by *C. burnetii* for amino acids over carbohydrates as carbon and energy sources [4]. *C. burnetii* has a biochemically

unusual peptidoglycan with associated protease-resistant proteins that may provide protection against CCV degradative activities that can quickly destroy *E. coli* [6,7].

The cellular microbiology and known metabolic properties of other obligates provide insight into conditions that might support axenic growth. *C. trachomatis* replicates in a vacuole disconnected from the endocytic pathway [8]. The compartment is freely permeable to cytoplasmic ions and has a pH of 7.2 [9]. Vesicular-mediated nutrient delivery is invoked based on vacuole interactions with multivesicular bodies, lipid droplets, and Golgi-derived vesicles [10]. Defined metabolic activities of purified chlamydia include transport and oxidation of glucose-6-phosphate [11]. Vacuoles harboring *E. chaffeensis* and *A. phagocytophilum* resemble early endosomes and autophagosomes, respectively, with predicted pHs slightly lower than neutrality [12,13]. Intracellular trafficking studies suggest access to ample supplies of amino acids [12,13]. *Rickettsia* spp. replicate in the well-defined milieu of the host cytoplasm and, similar to *C. trachomatis*, scavenge ATP from the host via the activity of an ATP/ADP translocase [14].

In Silico Pathway Reconstruction Reveals Metabolic Capacity

Along with known metabolic capabilities and host cell niches, clues to axenic growth requirements can be gleaned from *in silico* metabolic pathway reconstructions. An excellent recent review by Fuchs and co-authors [15] details predicted metabolic capacities of *Coxiella*, *Chlamydia*, and *Rickettsia* based on genome data. A common nutritional deficiency of these and other obligates is extensive amino acid auxotrophy that is compensated for by the activities of amino acid and peptide permeases that scavenge amino acids from the host [15]. For example, *C. burnetii* encodes 13 predicted major facilitator superfamily transporters having documented roles in amino acid uptake [16,17] and several peptide transporters [18]. *C. burnetii* encodes the largest number of open

Citation: Omsland A, Hackstadt T, Heinzen RA (2013) Bringing Culture to the Uncultured: *Coxiella burnetii* and Lessons for Obligate Intracellular Bacterial Pathogens. PLoS Pathog 9(9): e1003540. doi:10.1371/journal.ppat.1003540

Editor: Virginia Miller, University of North Carolina at Chapel Hill School of Medicine, United States of America

Published: September 5, 2013

This is an open-access article, free of all copyright, and may be freely reproduced, distributed, transmitted, modified, built upon, or otherwise used by anyone for any lawful purpose. The work is made available under the Creative Commons CC0 public domain dedication.

Funding: This work was funded by the Intramural Research Program of the National Institutes of Health, National Institute of Allergy and Infectious Diseases. The funders had no role in study design, data collection and analysis, decision to publish, or preparation of the manuscript.

Competing Interests: The authors have declared that no competing interests exist.

* E-mail: rheinzen@niaid.nih.gov

reading frames (2,280 in the Nine Mile reference strain) among the obligates discussed in this review, and consequently, has predicated metabolic complexity relative to these bacteria [18]. Obligates that have undergone more extensive genome reduction rely on additional specialized transport systems to acquire nutrients from the host. For example, genome data indicate defects in purine and pyrimidine biosynthesis by *C. trachomatis*, *R. rickettsia*, *R. prowazekii*, and *O. tsutsugamushi*. Consequently, these organisms have evolved predicted and verified transporters that import host nucleotides [10,14,19,20]. Consistent with defined utilization of glucose-6-phosphate and a largely intact glycolytic pathway, *C. trachomatis* has a predicted transporter (UhpC) for this energized sugar that likely represents an important carbon and energy source [15].

Do Not Forget the Oxygen

Low oxygen concentration (1–5%) was essential for axenic growth of *C. burnetii*, a result that seems counterintuitive considering the bacterium prodigiously grows in host cells cultivated in ambient oxygen (~21% O₂). However, the intracellular oxygen concentration of cultured cells is generally lower than the extracellular concentration [21], and tissues have a range of oxygenation levels that can be well below ambient levels [22].

The impetus for testing low oxygen arose from genome analysis showing *C. burnetii* encodes the terminal oxidases cytochrome *bd* and cytochrome *o*. Thus, *C. burnetii* appeared adaptable to growth under different oxygen concentrations because cytochrome *bd* and cytochrome *o*, based on O₂ affinities, are typically used under microaerobic and aerobic conditions, respectively. *C. trachomatis*, *R. rickettsia*, and *R. prowazekii* also encode cytochrome *bd*, implying a microaerobic environment might be optimal for axenic growth of these organisms. Other obligates might simply prefer a low oxygen environment to lessen oxidative stress.

Getting Started

Known pathogen physiology, niche characteristics, and predicted metabolic capacity provide a basis on which to embark on a stepwise approach to axenic media development. Two important technical considerations before beginning are 1) obtaining adequate amounts of highly pure bacteria for testing, and 2) developing a straightforward assay to gauge metabolic fitness. Obligate intracellular bacteria are typically cultivated in tissue culture—a growth system that requires an extensive purification protocol to rid bacterial preparations of contaminating host cell material—with the most problematic contaminates for metabolic studies being mitochondria. Incorporation of radioactive amino acids into protein reflects a biosynthetic process reliant on the activity of major metabolic pathways, and thus is an informative and easy assay of global metabolic activity. *C. burnetii* protein synthesis was measured by scintillation counting and/or gel electrophoresis and autoradiography following incubation in different media formulations containing [³⁵S] cysteine-methionine.

The first media component to identify is a metabolically permissive buffer having a pKa near the predicted pH of the bacterium's intracellular niche. Testing of buffers containing [³⁵S] cysteine-methionine and readily metabolized glutamate showed that citrate buffer was optimal for *C. burnetii* protein synthesis [23]. Various salt mixtures providing physiologic concentrations of ions can then be tested, again with composition based on intracellular habitats. As speculated, *C. burnetii* preferred serum levels of Na⁺, K⁺, and Cl⁻, and was particularly sensitive to Cl⁻ concentration [23]. The resulting buffer was supplemented with nutrients (e.g., fetal bovine serum [FBS]) predicted to be transported from the host extracellular environment to the CCV via fluid phase

endocytosis. Neopeptone was added as the bulk carbon and energy source based on *Coxiella*'s known and predicted preference for amino acids/peptides [23].

During *C. burnetii* media development, metabolic activity continued to improve, but increases in genome equivalents by quantitative PCR were not detected. Thus, to gain insight into potential media deficiencies, the transcriptomes of *C. burnetii* incubated in media and growing in Vero host cells were compared [24]. As expected, the corresponding gene transcriptional profiles were highly discordant. However, a marked down regulation of ribosomal gene expression by axenically cultured bacteria was observed, suggesting that, despite the presence of a rich amino acid source (neopeptone), media was still deficient in amino acids. A different source of amino acids, casamino acids, was then tested. Additionally, media was supplemented with a high concentration (1.5 mM) of L-cysteine based on the similar requirement for axenic growth of *Legionella pneumophila*, a close relative of *C. burnetii*'s. Casamino acids and L-cysteine had an additive effect on metabolic fitness under ambient oxygen (~21%), but again, bacterial replication was not observed.

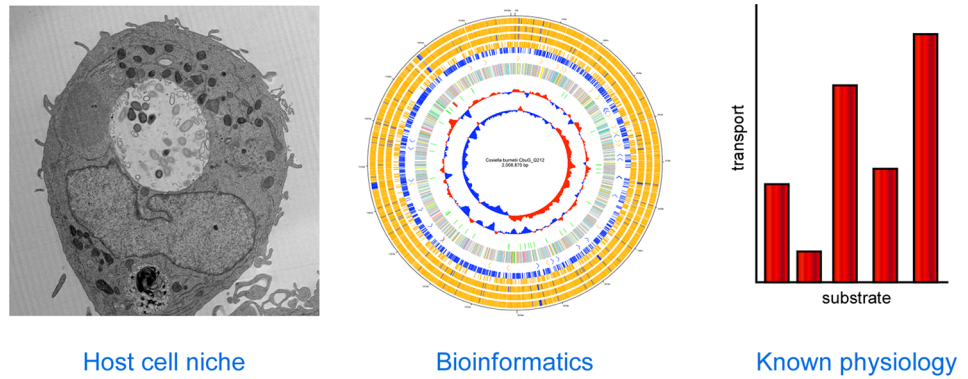
Negative growth results prompted an assessment *C. burnetii* replication at low oxygen levels. When *C. burnetii* was incubated in a medium now termed acidified citrate cysteine medium (ACCM) in 2.5% oxygen, vigorous growth (~3 log₁₀ in 6 days) occurred. A summary of a systematic approach to developing axenic growth media for obligate intracellular bacteria is depicted in Figure 1.

Chlamydia: A Work in Progress

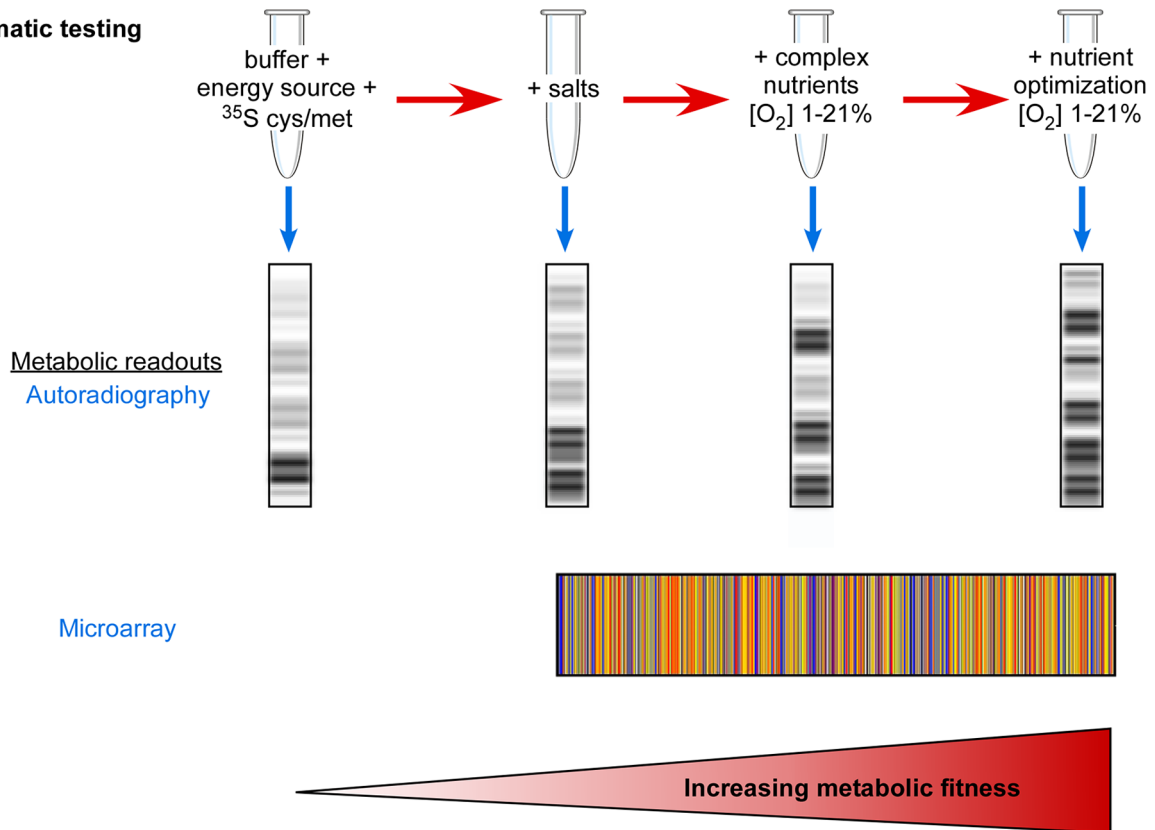
Two recent reports support the idea that axenic growth of *C. trachomatis* may be possible by refuting dogma that the non-replicating, infectious elementary body (EB) is incapable of metabolism outside of a eukaryotic host cell [11,25]. Haider et al. [25] showed by Raman microspectroscopy and autoradiography that labeled phenylalanine is incorporated by EBs during extended incubation in DGM-21A, a medium that, interestingly, is optimized for growth of *Acanthamoeba* sp. Omsland and co-workers [11] subsequently developed a novel phosphate buffer-based CIP-1 medium that supports pronounced metabolism of host cell-free *C. trachomatis*. Based on previous characterization of the chlamydia-containing vacuole [9], CIP-1 has ion concentrations and a pH mimicking the host cytoplasm. Moreover, bioinformatics data and known physiology prompted addition of glucose-6-phosphate and dithiothreitol, as well as FBS, all amino acids, and four nucleotide triphosphates to account for auxotrophies. Seminal findings of this study include (1) glucose-6-phosphate is a preferred energy source of EBs; (2) replicative reticulate bodies (RB), but not EBs, require exogenous ATP as an energy source; and (3) microaerobic conditions enhance metabolic activity.

CIP-1 medium with further modifications might support axenic replication of *C. trachomatis*. However, a potential obstacle is reproducing conditions that promote completion of the chlamydial biphasic developmental cycle. Because only EBs are infectious, failure to accomplish the EB-to-RB-to-EB cycle under axenic conditions would likely result in cultured bacteria that are non-infectious. Differentiation of *L. pneumophila* between replicative and transmissive forms is dependent on stationary phase physiology associated with nutrient limitation [26]. A similar scenario is proposed for developmental transitions of *C. burnetii* wherein non-replicating and metabolically dormant small cell variants (SCVs) differentiate in replicative large cell variants (LCVs) that, in turn, convert back to SCVs [27]. It is logical to suspect chlamydial development is also regulated by nutrient availability and that nutrient-derived developmental signals could be reproduced in

A. Predictions



B. Systematic testing



C. Growth assays

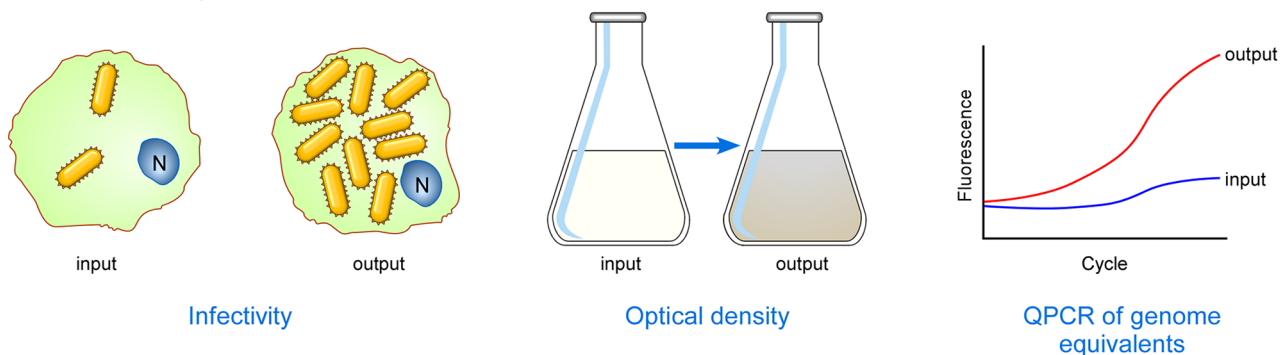


Figure 1. Systematic approach to developing media supporting host cell-free growth of obligate intracellular bacteria. (A) Predictions based on niche characteristics, metabolic pathway reconstructions, and known physiology of purified organisms can be used to establish initial media pH and compositions. Oxygen tension should be tested empirically. (B) Stepwise testing of media formulations and oxygen tension to find conditions that support increased metabolic fitness using informative indicators of metabolic activity such as SDS-PAGE/autoradiography and

transcriptional microarrays. Titrations of all media constituents should be conducted since high concentrations of some can be inhibitory [23]. (C) Growth assays to determine if increasing metabolic fitness correlates with increasing bacterial numbers. The infectivity, optical density, and/or genome equivalents of input bacteria can be compared to output bacteria following incubation. doi:10.1371/journal.ppat.1003540.g001

axenic media. Indeed, developmental transitions of *C. burnetii* in ACCM appear comparable to those of host cell-grown bacteria [24]. By associating *C. trachomatis* metabolic activities and developmental transitions with modifications of CIP-1 medium, critical insight into medium constituents that impact development will be gained that may ultimately lead to axenic replication that mimics growth in host cells.

Extension to Unculturable Normal Flora

Although this review emphasizes approaches to culturing obligate intracellular bacterial pathogens, similar logic and strategies can be applied to growth of “unculturable” human normal flora that are refractory to cultivation using conventional techniques [28]. Metagenomic sequencing and other molecular techniques have verified that only a small sub-fraction of the human microbiome has surrendered to conventional culture techniques. As stressed for obligates, replicating the microbe’s natural environment as closely as possible can be instrumental to successful culture. This can mean using the environment itself as a culture medium [28]. Sizova and co-workers [29] adapted methods originally designed for culturing of environmental bacteria to culture recalcitrant human oral bacteria. One approach used an ingeniously designed incubation device consisting of a removable oral appliance with agarose-containing diffusion minichambers supporting in vivo growth of a mixed bacterial culture. Subsequent subculture of chamber bacteria on basic anaerobic medium (BM) yielded previously uncultivated taxa. A second successful approach used long-term incubation of

microtiter plates where individual wells containing BM were inoculated with single bacterial cells derived from subgingival plaque. The first approach illustrates the poorly understood phenomenon that initial in vivo growth increases the likelihood of subsequent in vitro growth, while the second approach demonstrates the principal that successful culture of previously uncultivated bacteria is enhanced if single cells are allowed to replicate without competition from faster-growing neighbor bacteria [29].

Concluding Remarks

It is reasonable to reclassify *C. burnetii* as a facultative intracellular bacterium, although this designation can be debated based on the absence of a defined natural environment that sustains extracellular growth [30]. Axenic growth has fueled important new areas of research, including development of a complete set of genetic tools [31]. There is no obvious reason why similar axenic growth cannot be achieved for *Anaplasma*, *Ehrlichia*, *Chlamydia*, *Orientia*, and *Rickettsia*. With the exception of *Orientia*, these bacteria contain a substantially reduced genome relative to the ~2 megabase genome of *C. burnetii* that may present a greater barrier to overcome in pursuit of axenic growth. However, a similar systematic approach that exploits known and predicted physiologic behaviors, and persistence in testing, could prove successful in rescuing these obligates from their host cell.

Acknowledgments

We thank Anita Mora for the graphic illustrations.

References

1. Voth DE, Heinzen RA (2007) Lounging in a lysosome: the intracellular lifestyle of *Coxiella burnetii*. *Cell Microbiol* 9: 829–840.
2. Enserink M (2010) Questions abound in Q-fever explosion in the Netherlands. *Science* 327: 266–267.
3. Burton PR, Stueckemann J, Welsh RM, Paretsky D (1978) Some ultrastructural effects of persistent infections by the rickettsia *Coxiella burnetii* in mouse L cells and green monkey kidney (Vero) cells. *Infect Immun* 21: 556–566.
4. Hackstadt T, Williams JC (1981) Biochemical stratagem for obligate parasitism of eukaryotic cells by *Coxiella burnetii*. *Proc Natl Acad Sci USA* 78: 3240–3244.
5. Hackstadt T, Williams JC (1983) pH dependence of the *Coxiella burnetii* glutamate transport system. *J Bacteriol* 154: 598–603.
6. Howe D, Shannon JG, Winfree S, Dorward DW, Heinzen RA (2010) *Coxiella burnetii* phase I and II variants replicate with similar kinetics in degradative phagolysosome-like compartments of human macrophages. *Infect Immun* 78: 3465–3474.
7. Amano K, Williams JC (1984) Sensitivity of *Coxiella burnetii* peptidoglycan to lysozyme hydrolysis and correlation of sacculus rigidity with peptidoglycan-associated proteins. *J Bacteriol* 160: 989–993.
8. Fields KA, Hackstadt T (2002) The chlamydial inclusion: escape from the endocytic pathway. *Annu Rev Cell Dev Biol* 18: 221–245.
9. Grieshaber S, Swanson JA, Hackstadt T (2002) Determination of the physical environment within the *Chlamydia trachomatis* inclusion using ion-selective ratiometric probes. *Cell Microbiol* 4: 273–283.
10. Saka HA, Valdivia RH (2010) Acquisition of nutrients by *Chlamydiae*: unique challenges of living in an intracellular compartment. *Curr Opin Microbiol* 13: 4–10.
11. Omsland A, Sager J, Nair V, Sturdevant DE, Hackstadt T (2012) Developmental stage-specific metabolic and transcriptional activity of *Chlamydia trachomatis* in an axenic medium. *Proc Natl Acad Sci USA* 109: 19781–19785.
12. Niu H, Xiong Q, Yamamoto A, Hayashi-Nishino M, Rikihisa Y (2012) Autophagosomes induced by a bacterial Beclin 1 binding protein facilitate obligatory intracellular infection. *Proc Natl Acad Sci USA* 109: 20800–20807.
13. Barnewall RE, Rikihisa Y, Lee EH (1997) *Ehrlichia chaffeensis* inclusions are early endosomes which selectively accumulate transferrin receptor. *Infect Immun* 65: 1455–1461.
14. Audia JP, Winkler HH (2006) Study of the five *Rickettsia prowazekii* proteins annotated as ATP/ADP translocases (Tlc): Only Tlc1 transports ATP/ADP, while Tlc4 and Tlc5 transport other ribonucleotides. *J Bacteriol* 188: 6261–6268.
15. Fuchs TM, Eisenreich W, Heesemann J, Goebel W (2012) Metabolic adaptation of human pathogenic and related nonpathogenic bacteria to extra- and intracellular habitats. *FEMS Microbiol Rev* 36: 435–462.
16. Chen DE, Podell S, Sauer JD, Swanson MS, Saier MH, Jr. (2008) The phagosomal nutrient transporter (Pht) family. *Microbiology* 154: 42–53.
17. Sauer JD, Bachman MA, Swanson MS (2005) The phagosomal transporter A couples threonine acquisition to differentiation and replication of *Legionella pneumophila* in macrophages. *Proc Natl Acad Sci USA* 102: 9924–9929.
18. Beare PA, Unsworth N, Andoh M, Voth DE, Omsland A, et al. (2009) Comparative genomics reveal extensive transposon-mediated genomic plasticity and diversity among potential effector proteins within the genus *Coxiella*. *Infect Immun* 77: 642–656.
19. Tjaden J, Winkler HH, Schwoppe C, Van Der Laan M, Mohlmann T, et al. (1999) Two nucleotide transport proteins in *Chlamydia trachomatis*, one for net nucleoside triphosphate uptake and the other for transport of energy. *J Bacteriol* 181: 1196–1202.
20. Min CK, Yang JS, Kim S, Choi MS, Kim IS, et al. (2008) Genome-based construction of the metabolic pathways of *Orientia tsutsugamushi* and comparative analysis within the Rickettsiales order. *Comp Funct Genomics*: 623145.
21. Dmitriev RI, Zhdanov AV, Jasionek G, Papkovsky DB (2012) Assessment of cellular oxygen gradients with a panel of phosphorescent oxygen-sensitive probes. *Anal Chem* 84: 2930–2938.
22. Juul N, Jensen H, Hvid M, Christiansen G, Birkelund S (2007) Characterization of in vitro chlamydial cultures in low-oxygen atmospheres. *J Bacteriol* 189: 6723–6726.
23. Omsland A, Cockrell DC, Fischer ER, Heinzen RA (2008) Sustained axenic metabolic activity by the obligate intracellular bacterium *Coxiella burnetii*. *J Bacteriol* 190: 3203–3212.
24. Omsland A, Cockrell DC, Howe D, Fischer ER, Virtaneva K, et al. (2009) Host cell-free growth of the Q fever bacterium *Coxiella burnetii*. *Proc Natl Acad Sci USA* 106: 4430–4434.

25. Haider S, Wagner M, Schmid MC, Sixt BS, Christian JG, et al. (2010) Raman microspectroscopy reveals long-term extracellular activity of chlamydiae. *Mol Microbiol* 77: 687–700.
26. Molofsky AB, Swanson MS (2004) Differentiate to thrive: lessons from the *Legionella pneumophila* life cycle. *Mol Microbiol* 53: 29–40.
27. Coleman SA, Fischer ER, Howe D, Mead DJ, Heinzen RA (2004) Temporal analysis of *Coxiella burnetii* morphological differentiation. *J Bacteriol* 186: 7344–7352.
28. Stewart EJ (2012) Growing unculturable bacteria. *J Bacteriol* 194: 4151–4160.
29. Sizova MV, Hohmann T, Hazen A, Paster BJ, Halem SR, et al. (2012) New approaches for isolation of previously uncultivated oral bacteria. *Appl Environ Microbiol* 78: 194–203.
30. Silva MT (2012) Classical labeling of bacterial pathogens according to their lifestyle in the host: inconsistencies and alternatives. *Front Microbiol* 3: 71.
31. Beare PA, Larson CL, Gilk SD, Heinzen RA (2012) Two systems for targeted gene deletion in *Coxiella burnetii*. *Appl Environ Microbiol* 78: 4580–4589.