



Published in final edited form as:

*Heart Rhythm*. 2013 October ; 10(10): 1562–1568. doi:10.1016/j.hrthm.2013.07.023.

## The QT Interval and Risk of Incident Atrial Fibrillation

Mala C. Mandyam, MD<sup>1</sup>, Elsayed Z. Soliman, MD<sup>2</sup>, Alvaro Alonso, MD, PhD, MPH<sup>3</sup>, Thomas A. Dewland, MD<sup>1</sup>, Susan R. Heckbert, MD, PhD<sup>4</sup>, Eric Vittinghoff, PhD<sup>5</sup>, Steven R. Cummings, MD<sup>6</sup>, Patrick T. Ellinor, MD, PhD<sup>7</sup>, Bernard R. Chaitman, MD<sup>8</sup>, Karen Stocke, MBA<sup>9</sup>, William B. Applegate, MD, MPH<sup>10</sup>, Dan E. Arking, PhD<sup>11</sup>, Javed Butler, MD, MPH<sup>12</sup>, Laura R. Loehr, MD, PhD, MS<sup>13</sup>, Jared W. Magnani, MD, MS<sup>14</sup>, Rachel A. Murphy, PhD<sup>15</sup>, Suzanne Satterfield, MD, DrPh<sup>16</sup>, Anne B. Newman, MD, MPH<sup>17</sup>, and Gregory M. Marcus, MD, MAS, FHRS<sup>1</sup>

<sup>1</sup>Div of Cardiology, Electrophysiology Sect, University of California, San Francisco

<sup>2</sup>Epidemiological Cardiology Research Center, Dept of Epidemiology and Prevention, Wake Forest University School of Medicine, Winston Salem, NC

<sup>3</sup>Div of Epidemiology and Community Health, School of Public Health, University of Minnesota, Minneapolis

<sup>4</sup>Dept of Epidemiology, University of Washington, Seattle

<sup>5</sup>Dept of Epidemiology and Biostatistics, University of California, San Francisco

<sup>6</sup>Dept of Medicine, University of California, San Francisco

<sup>7</sup>Cardiovascular Research Center, Massachusetts General Hospital, Charlestown

<sup>8</sup>Div of Cardiology, Saint Louis University School of Medicine, MO

<sup>9</sup>ECG Core Laboratory, Saint Louis University School of Medicine, MO

<sup>10</sup>Div of Gerontology and Geriatric Medicine, Wake Forest University School of Medicine, Winston Salem, NC

<sup>11</sup>McKusick-Nathans Institute of Genetic Medicine, Johns Hopkins School of Medicine, Baltimore, MD

<sup>12</sup>Cardiology Div, Dept of Medicine, Emory University, Atlanta, GA

<sup>13</sup>Dept of Epidemiology, University of North Carolina at Chapel Hill

<sup>14</sup>Dept of Medicine, Cardiovascular Medicine Section, Boston University, MA

<sup>15</sup>Laboratory of Population Science, Intramural Research Program, National Institute on Aging, Bethesda, MD

---

© 2013 The Heart Rhythm Society. Published by Elsevier Inc. All rights reserved.

Corresponding Author: Gregory M. Marcus, M.D., M.A.S., Division of Cardiology, Electrophysiology Section, University of California, San Francisco, 505 Parnassus Ave, M-1180B, Box 0124, 94143-0124, marcusg@medicine.ucsf.edu, phone (415) 476-5706, fax (415) 353-9190.

The number of authors on this manuscript reflects the collaborative efforts of researchers from the Atherosclerosis Risk in Communities study, Cardiovascular Health Study, and Health Aging and Body Composition Study.

**Conflicts of Interest Disclosure:** None

**Publisher's Disclaimer:** This is a PDF file of an unedited manuscript that has been accepted for publication. As a service to our customers we are providing this early version of the manuscript. The manuscript will undergo copyediting, typesetting, and review of the resulting proof before it is published in its final citable form. Please note that during the production process errors may be discovered which could affect the content, and all legal disclaimers that apply to the journal pertain.

<sup>16</sup>Dept of Preventive Medicine, University of Tennessee Health Science Center, Memphis

<sup>17</sup>Dept of Epidemiology, School of Public Health, University of Pittsburgh, PA

## Abstract

**BACKGROUND**—Abnormal atrial repolarization is important in the development of atrial fibrillation (AF), but no direct measurement is available in clinical medicine.

**OBJECTIVE**—To determine whether the QT interval, a marker of ventricular repolarization, could be used to predict incident AF.

**METHODS**—We examined a prolonged QT corrected by the Framingham formula ( $QT_{Fram}$ ) as a predictor of incident AF in the Atherosclerosis Risk in Communities (ARIC) study. The Cardiovascular Health Study (CHS) and Health, Aging, and Body Composition (Health ABC) study were used for validation. Secondary predictors included QT duration as a continuous variable, a short QT interval, and QT intervals corrected by other formulae.

**RESULTS**—Among 14,538 ARIC participants, a prolonged  $QT_{Fram}$  predicted a roughly two-fold increased risk of AF (hazard ratio [HR] 2.05, 95% confidence interval [CI] 1.42–2.96,  $p<0.001$ ). No substantive attenuation was observed after adjustment for age, race, sex, study center, body mass index, hypertension, diabetes, coronary disease, and heart failure. The findings were validated in CHS and Health ABC and were similar across various QT correction methods. Also in ARIC, each 10-ms increase in  $QT_{Fram}$  was associated with an increased unadjusted (HR 1.14, 95% CI 1.10–1.17,  $p<0.001$ ) and adjusted (HR 1.11, 95% CI 1.07–1.14,  $p<0.001$ ) risk of AF. Findings regarding a short QT were inconsistent across cohorts.

**CONCLUSIONS**—A prolonged QT interval is associated with an increased risk of incident AF.

## Keywords

atrial fibrillation; epidemiology; risk; QT interval; electrocardiography; ECG

## INTRODUCTION

Atrial fibrillation (AF) is the most common sustained arrhythmia in clinical practice.<sup>1</sup> Major population-based studies have focused on AF risk factors that are most closely related to hemodynamic and atrial substrate abnormalities, such as hypertension, heart failure, and left atrial enlargement.<sup>1–4</sup> However, computer modeling, animal models, and small human studies make it clear that electrical abnormalities, particularly in atrial repolarization and refractoriness, are also important in the pathogenesis of AF.<sup>5–10</sup>

The QT interval obtained from the standard 12-lead ECG is a readily available, inexpensive, and rapid measure of ventricular repolarization. However, it is not known if this manifestation of ventricular repolarization can reflect clinically relevant atrial electrophysiology. Both ventricular and atrial refractoriness are determined by several of the same potassium and sodium currents,<sup>11</sup> suggesting that there is likely a within-person correlation between the two. Of interest, small studies of individuals with the inherited Short QT<sup>12</sup> and Long QT<sup>13,14</sup> Syndromes suggest an increased risk of AF among these rare individuals with monogenically-mediated abnormalities in myocardial repolarization. A recent analysis of the REGARDS (Reasons for Geographic and Racial Differences in Stroke) study found that a longer corrected QT interval (QTc) is associated with stroke, but the mechanism remains unknown.<sup>15</sup> A recent analysis of a large administrative database demonstrated a J-shaped association between QTc and AF among patients referred for an ECG.<sup>16</sup> We sought to determine if a longer QT interval might be an important predictor of

incident AF in well characterized, population-based cohort studies free of selection bias for ECG referral.

## METHODS

We assessed the relationship between QT interval length and risk of incident AF in the Atherosclerosis Risk in Communities (ARIC) cohort, a prospective population-based cohort study. Because biological plausibility supports both longer or shorter atrial repolarization as risk factors for AF (suggesting that a longer or shorter QT interval could be important), we validated our findings in two independent prospective cohort studies, the Cardiovascular Health Study (CHS) and the Health, Aging, and Body Composition (Health ABC) study.

Recruitment, characterization, and outcome ascertainment of ARIC, CHS, and Health ABC have been described in detail previously.<sup>18–20</sup> ARIC was selected as the primary cohort because it represents a relatively young and healthy population, limiting the roles of atrial fibrosis and structural heart disease and therefore potentially optimally uncovering innate electrophysiological abnormalities as the cause of AF. Each cohort's research protocol was approved by its respective institutional review board, and all participants provided written informed consent. Brief descriptions of each are provided below:

### ARIC

Between 1987–1989, 15,792 adults aged 45–64 years sampled from four US communities (northwest suburbs of Minneapolis, MN; Washington County, MD; Jackson, MS; Forsyth County, NC) underwent a comprehensive baseline assessment. Subsequent contact included annual phone interviews and three repeat examinations spaced approximately three years apart.<sup>18</sup> Standard resting 12-lead ECGs were performed at each visit. All measurements were digitally recorded, and a globally-averaged QT interval was generated from the earliest QRS onset and T-wave offset using all leads. All ECG waveforms were verified by visual inspection.<sup>21</sup> Prevalent AF was identified from the baseline ECG, and incident AF was identified from study visit ECGs, hospital discharge diagnoses, and death certificates.<sup>22</sup> Self-reported medication use in the 2 weeks prior to study entry was recorded. Methods of ascertaining baseline hypertension (HTN), coronary heart disease (CHD), congestive heart failure (CHF), and diabetes (DM) for each cohort are described in Supplementary Appendix Table 1.

### CHS

From 1989–1990, 5,201 adults aged 65 years and older were recruited from the Medicare eligibility lists of four US counties (Forsyth, NC; Sacramento, CA; Washington, MD; Alleghany, PA), and an additional 687 African-Americans were recruited from 1992–1993.<sup>19</sup> Participants underwent a comprehensive baseline examination and were followed by alternating semiannual phone calls and clinic visits until 1999 and phone calls every six months thereafter. Resting 12-lead ECGs were recorded using MAC PC ECG Machines (Marquette Electronics) and processed using the GE Marquette 12-SL program.<sup>19</sup> This program measured the QT interval from a median QRS-T complex derived from all leads.<sup>23</sup> ECG waveforms were measured automatically after visual inspection for errors and quality. Prevalent AF was identified from the baseline ECG,<sup>24</sup> and incident AF was identified by study visit ECGs or hospital discharge diagnosis codes supplemented with Medicare inpatient claims data. Participants were asked to provide containers of all medications used in the 2 weeks prior to the baseline home interview.<sup>25</sup>

## Health ABC

Between 1997–1998, 3,075 adults aged 70–79 years were sampled from two US regions (Pittsburgh, PA; Memphis, TN). Participants underwent a comprehensive baseline exam and were followed thereafter with semi-annual alternating phone calls and clinic visits.<sup>20</sup> Baseline ECGs were analyzed at the ECG core laboratory at Saint Louis University Medical Center (St Louis, Missouri). ECGs were coded using the Minnesota Coding system and were visually inspected for accuracy.<sup>26</sup> Analysts measured the QT interval from the start of the QRS complex to the T-wave offset in three beats in lead II, and an average duration was generated. Prevalent AF was identified from the baseline ECG or from Medicare claims data. Incident AF was identified from the year 4 visit ECG, hospital discharge diagnoses, or Medicare claims data provided through the National Center for Health Statistics' Medicare claims linkage. Participants provided medications used in the previous two weeks at the year 1 visit.

## QT Interval Ascertainment

We excluded participants with known prevalent AF, QRS duration  $\geq 120$ ms, left ventricular hypertrophy (LVH), ventricular pre-excitation, Vaughan-Williams Class I or III antiarrhythmic drug use, artificial pacing, or extremes of QT interval duration ( $>600$  or  $<200$  ms) at baseline. We corrected the QT interval using the Framingham, Fridericia, Hodge and Bazett formulae (Supplementary Appendix Table 2). We used the Framingham formula for primary analyses, a linear correction method that is recommended by American Heart Association/American College of Cardiology/Heart Rhythm Society consensus and previously used in population-based studies.<sup>15,27</sup> Our primary predictor was an abnormally long Framingham-corrected QT interval ( $QT_{Fram}$ ), defined as  $\geq 460$  ms in women and  $\geq 450$  ms in men.<sup>27</sup> Secondary predictors included abnormally long QT intervals corrected by the other formulae,  $QT_{Fram}$  as a continuous variable, and abnormally short corrected QT intervals (defined as  $\leq 390$  ms).<sup>27</sup> Incident AF was the primary outcome.

## Statistical Analyses

Normally distributed continuous variables are presented as means  $\pm$  SD, and variables that were not normally distributed are presented as medians and interquartile ranges (IQR). Hazard ratios (HR) and 95% confidence intervals (CI) for the association between QTc interval and incident AF were obtained using Cox proportional hazards models. In CHS and Health ABC, QTc as a continuous variable was not consistently amenable to analysis using Cox proportional hazards models due to non-linear response, as assessed by restricted cubic splines. Covariates in multivariable models included age, race, sex, body mass index ( $kg/m^2$ ), study center, HTN, CHF, CHD, and DM. Race was analyzed as white versus non-white. Sex and race-specific effects of our primary predictor (a prolonged  $QT_{Fram}$ ) were examined using stratified analyses and statistical tests for interaction. Missing values were excluded from analyses. All analyses were performed using Stata Version 12 (College Station, TX).

## RESULTS

After the exclusion criteria were applied, our final study cohorts included 14,538 participants in ARIC, 4,745 in CHS, and 2,396 in Health ABC (Table 1).

Individuals with a prolonged  $QT_{Fram}$  had an increased risk of developing AF in all three cohorts (Figure 1). The association persisted after multivariable adjustment for potential confounders (Figure 2). Similar statistically significant findings also persisted in ARIC and Health ABC regardless of the method of QT interval correction (Table 2). Although the point estimates consistently demonstrated a positive association, statistical significance was

not achieved in adjusted analysis using the Hodge correction in CHS. Stratified analyses according to sex and race did not significantly change the association between a prolonged QTc and risk of AF; there was no evidence for an interaction between either sex or race and prolonged QTc.

Examining the corrected QT interval as a continuous variable in ARIC, every 10-ms increase in QT<sub>Fram</sub> was associated with an increased risk of AF, both prior to (HR 1.14, 95%CI 1.10–1.17, p<0.001) and after adjustment (HR 1.11, 95%CI 1.07–1.14, p<0.001).

Findings were consistent across correction methods used. Findings regarding a short QT were inconsistent by method of QT interval correction and across cohorts (Table 3).

## DISCUSSION

We found that individuals with a prolonged QT<sub>Fram</sub> had an increased risk of AF. This association was consistent across three prospective, population-based cohorts and remained significant after adjustment for traditional AF risk factors. Our data also support a continuous association between a longer QT and increased risk of AF. These findings suggest that ventricular repolarization represents a new and easily identifiable marker of AF risk that may provide insights into the pathophysiology of this arrhythmia.

Recent evidence has demonstrated an increased risk of AF in individuals with Long QT Syndrome (LQTS).<sup>13,14</sup> While this rare syndrome is estimated to affect only 0.05% of the general population,<sup>28,29</sup> the prevalence of a long QTc interval in our cohorts was substantially higher at 1–9%. Therefore, it is unlikely our methods simply detected those with an occult diagnosis of the LQTS—indeed, the larger prevalence observed suggests that a phenomenon clinically relevant to the general population is present. A longer QT interval may directly reflect a greater propensity to AF as a manifestation of aberrations in refractoriness paralleled in the atrium and ventricle. For example, LQTS patients with prolonged cardiomyocyte refractoriness exhibit polymorphic atrial tachycardia with an undulating P-wave axis that has been termed “atrial torsades de pointes,”<sup>30</sup> a state known to degenerate into AF.<sup>31</sup> An alternative explanation may be related to enhanced activity of the late sodium current: increased late sodium entry into cardiomyocytes manifests on the 12-lead ECG by prolonging the QT interval<sup>32,33</sup> and, by increasing intracellular calcium and triggered automaticity, may promote AF.<sup>34,35</sup>

Investigators in the REGARDS study demonstrated that individuals with a prolonged QT had an increased risk of stroke independent of traditional risk factors, but no clear explanation was provided.<sup>15</sup> Our finding that a prolonged QT increases the risk of AF provides a potential explanation. Subsequent analyses to determine if AF mediates the association between the QT interval and stroke may prove fruitful.

More recently, Nielson et al. provided an important analysis of nearly 300,000 patients from the greater region of Copenhagen referred for an ECG.<sup>16</sup> Using covariates and incident outcome data derived from Danish registries, they demonstrated a J-shaped association between QTc (using both Framingham and Bazett corrections) and AF. These findings compliment ours nicely, and our data address several limitations inherent to that study. First, all participants in our three population-based cohort studies underwent 12 lead ECGs, thereby avoiding any potential referral bias that may have been present in the Copenhagen study. Second, because we were able to leverage the in-person data that was prospectively collected as part of these cohort studies, we were able to adjust for important baseline covariates such as body mass index and hypertension. Finally, our cohorts were enriched for African Americans, extending these findings beyond a Northern European population. It is unclear whether the relationship between a prolonged QTc and AF is genetic, due to an

environmental exposure, or is a manifestation of AF-associated comorbidities. Because our findings persisted after multivariable adjustment, we suspect this represents a process independent of previously identified risk factors for AF, such as HTN and CHF. Future examination of longitudinal cohorts that include younger individuals may be useful in determining if a longer QTc present in childhood or young adulthood predicts long-term AF risk. Additional future studies may also demonstrate whether AF patients with a longer QT represent a clinically-distinct AF subtype that is more or less amenable to certain therapies. For example, AF that arises due to a diffuse electrical abnormality may theoretically be less responsive to ablation procedures or antiarrhythmic drugs that prolong refractoriness.

Of note, individuals with the inherited Short QT Syndrome may have increased rates of AF,<sup>12</sup> a finding consistent with the notion that a shorter atrial effective refractory period may facilitate reentry and the presumed multiple wavelets that may sustain AF.<sup>5–10</sup> We observed inconsistent findings regarding a short corrected QT interval and incident AF. These findings are clearly more complex and difficult to interpret than our consistent observations regarding a long QT interval, but they may provide a source of valuable future investigation to better understand differing mechanisms of AF between diverse populations.

Various methods to adjust the QT interval for heart rate exist. The Bazett formula is the most frequently employed method in clinical practice, but it is inaccurate at faster and slower rates.<sup>27</sup> Based on the AHA/ACCF/HRS consensus guidelines, we adjusted the QT interval using the Framingham formula, a linear correction method in which the adjusted QT is less dependent on heart rate.<sup>27</sup> This was also the primary correction formula in the REGARDS study. It is important to note that our findings regarding a prolonged QT were robust and consistent across correction methods.

### Study Limitations

While medication use was rigorously obtained in each cohort, it remains possible that participants on Class I or III antiarrhythmic drugs were incompletely ascertained. Similarly, although AF diagnoses were identified from serial ECGs and hospitalizations, it is likely that some AF was not detected. We thus cannot exclude the possibility that some under-ascertained AF patients treated with undocumented antiarrhythmic drugs contributed to our results—however, given our consistent findings across three different cohorts, we believe this to be unlikely. Although measurement error in assessing the QT interval is possible, we would not expect it to be differentially present in those who later did and did not develop AF. Additionally, the 3 cohorts demonstrating consistent results represented two separate ECG core labs. Finally, it is possible that individuals with a longer QT are more aggressively monitored and therefore are more likely to have asymptomatic AF identified. However, this would not appear to sufficiently explain our finding that a continuous measure of QT predicted a progressively increased risk of AF.

### Conclusions

We found that a longer QT interval is associated with an increased risk of incident AF. As a readily available measurement on the routine 12-lead ECG, the QT interval may therefore provide a widely applicable novel predictor of incident AF. Individuals with AF who have a prolonged QT may also represent a distinct subtype of AF patients with abnormal repolarization, and future investigation can determine if identification of this subtype is useful in selecting particular therapeutic strategies.

### Supplementary Material

Refer to Web version on PubMed Central for supplementary material.



## Acknowledgments

**Funding Sources:** This research was supported by the following:

For the University of California San Francisco's Clinical & Translational Science Institute (UCSF CTSI): the National Center for Research Resources, the National Center for Advancing Translational Sciences, and the Office of the Director, NIH, through UCSF-CTSI Grant Number TL1 RR024129.

For the Atherosclerosis Risk in Communities (ARIC) Study: a collaborative support from National Heart, Lung, and Blood Institute (NHLBI) contracts (HHSN268201100005C, HHSN268201100006C, HHSN268201100007C, HHSN268201100008C, HHSN268201100009C, HHSN268201100010C, HHSN268201100011C, and HHSN268201100012C).

For the Cardiovascular Health Study (CHS): NHLBI contracts HHSN268201200036C, N01HC85239, N01HC55222, N01HC85079, N01HC85080, N01HC85081, N01HC85082, N01HC85083, N01HC85086, and grants HL080295 and HL068986, with additional contribution from the National Institute of Neurological Disorders and Stroke (NINDS). Additional support was provided by AG023629 from the National Institute on Aging (NIA). A full list of principal CHS investigators and institutions can be found at <http://www.chs-nhlbi.org/PI.htm>

For the Health, Aging, and Body Composition (Health ABC) Study: NIA contracts N01-AG-6-2101; N01-AG-6-2103; N01-AG-6-2106; NIA grant R01-AG028050, and National Institute of Nursing Research grant R01-NR012459. This research was supported in part by the Intramural Research Program of the NIH, NIA.

The contents of this publication are solely the responsibility of the authors and do not necessarily represent the official views of the any of supporting agencies or sources.

The authors thank the staff and participants of the ARIC, CHS, and Health ABC studies for their important contributions.

## ABBREVIATIONS

<b>AF</b>	atrial fibrillation
<b>ECG</b>	electrocardiogram
<b>QT<sub>c</sub></b>	corrected QT interval
<b>REGARDS</b>	Reasons for Geographic and Racial Differences in Stroke
<b>ARIC</b>	Atherosclerosis Risk in Communities
<b>CHS</b>	Cardiovascular Health Study
<b>Health ABC</b>	Health, Aging, and Body Composition
<b>HTN</b>	hypertension
<b>CHD</b>	coronary heart disease
<b>CHF</b>	congestive heart failure
<b>DM</b>	diabetes mellitus
<b>LVH</b>	left ventricular hypertrophy
<b>QT<sub>Fram</sub></b>	QT corrected by Framingham formula
<b>QT<sub>Frđ</sub></b>	QT corrected by Fridericia formula
<b>QT<sub>B</sub></b>	QT corrected by Bazett formula
<b>QT<sub>H</sub></b>	QT corrected by Hodge formula
<b>IQR</b>	interquartile range
<b>HR</b>	hazard ratio
<b>CI</b>	confidence interval

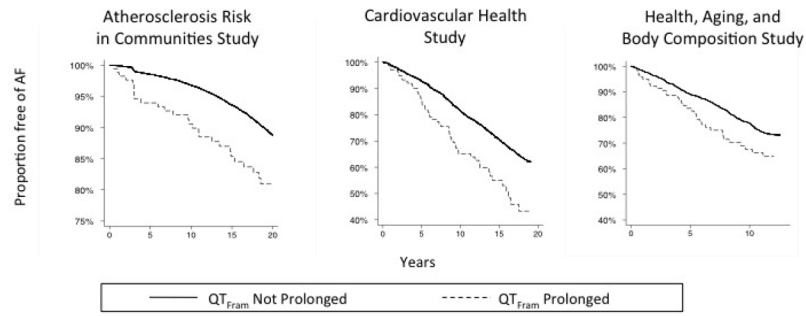
## LQTS Long QT Syndrome

### References

1. Go AS, Hylek EM, Phillips KA, et al. Prevalence of diagnosed atrial fibrillation in adults: National implications for rhythm management and stroke prevention: The AnTicoagulation and risk factors in atrial fibrillation (ATRIA) study. *JAMA*. 2001; 285(18):2370–2375. [PubMed: 11343485]
2. Psaty BM, Manolio TA, Kuller LH, et al. Incidence of and risk factors for atrial fibrillation in older adults. *Circulation*. 1997; 96(7):2455–2461. [PubMed: 9337224]
3. Benjamin EJ, Wolf PA, D'Agostino RB, Silbershatz H, Kannel WB, Levy D. Impact of atrial fibrillation on the risk of death: The framingham heart study. *Circulation*. 1998; 98(10):946–952. [PubMed: 9737513]
4. Vaziri SM, Larson MG, Benjamin EJ, Levy D. Echocardiographic predictors of nonrheumatic atrial fibrillation. the framingham heart study. *Circulation*. 1994; 89(2):724–730. [PubMed: 8313561]
5. Marcus GM, Smith LM, Whiteman D, et al. Alcohol intake is significantly associated with atrial flutter in patients under 60 years of age and a shorter right atrial effective refractory period. *Pacing Clin Electrophysiol*. 2008; 31(3):266–272. [PubMed: 18307620]
6. Ravelli F, Allessie M. Effects of atrial dilatation on refractory period and vulnerability to atrial fibrillation in the isolated langendorff-perfused rabbit heart. *Circulation*. 1997; 96(5):1686–1695. [PubMed: 9315565]
7. Cosio FG, Palacios J, Vidal JM, Cocina EG, Gomez-Sanchez MA, Tamargo L. Electrophysiologic studies in atrial fibrillation. slow conduction of premature impulses: A possible manifestation of the background for reentry. *Am J Cardiol*. 1983; 51(1):122–130. [PubMed: 6849250]
8. Byrd GD, Prasad SM, Ripplinger CM, et al. Importance of geometry and refractory period in sustaining atrial fibrillation: Testing the critical mass hypothesis. *Circulation*. 2005; 112(9 Suppl):I7–13. [PubMed: 16159868]
9. Moe GK, Rheinboldt WC, Abildskov JA. A computer model of atrial fibrillation. *Am Heart J*. 1964; 67:200–220. [PubMed: 14118488]
10. Moe GK, Abildskov JA. Atrial fibrillation as a self-sustaining arrhythmia independent of focal discharge. *Am Heart J*. 1959; 58(1):59–70. [PubMed: 13661062]
11. Nerbonne JM, Kass RS. Molecular physiology of cardiac repolarization. *Physiol Rev*. 2005; 85(4):1205–1253. [PubMed: 16183911]
12. Gaita F, Giustetto C, Bianchi F, et al. Short QT syndrome: A familial cause of sudden death. *Circulation*. 2003; 108(8):965–970. [PubMed: 12925462]
13. Johnson JN, Tester DJ, Perry J, Salisbury BA, Reed CR, Ackerman MJ. Prevalence of early-onset atrial fibrillation in congenital long QT syndrome. *Heart Rhythm*. 2008; 5(5):704–709. [PubMed: 18452873]
14. Zellerhoff S, Pistulli R, Monnig G, et al. Atrial arrhythmias in long-QT syndrome under daily life conditions: A nested case control study. *J Cardiovasc Electrophysiol*. 2009; 20(4):401–407. [PubMed: 19017345]
15. Soliman EZ, Howard G, Cushman M, et al. Prolongation of QTc and risk of stroke: The REGARDS (REasons for geographic and racial differences in stroke) study. *J Am Coll Cardiol*. 2012; 59(16):1460–1467. [PubMed: 22497826]
16. Nielsen JB, Graff C, Pietersen A, et al. J-shaped association between QTc interval duration and the risk of atrial fibrillation: Results from the copenhagen ECG study. *J Am Coll Cardiol*. 2013; 61(25):2557–2564. [PubMed: 23583581]
17. Roger VL, Go AS, Lloyd-Jones DM, et al. Heart disease and stroke statistics--2012 update: A report from the american heart association. *Circulation*. 2012; 125(1):e2–e220. [PubMed: 22179539]
18. The atherosclerosis risk in communities (ARIC) study: Design and objectives the ARIC investigators. *Am J Epidemiol*. 1989; 129(4):687–702. [PubMed: 2646917]



19. Fried LP, Borhani NO, Enright P, et al. The cardiovascular health study: Design and rationale. *Ann Epidemiol.* 1991; 1(3):263–276. [PubMed: 1669507]
20. Newman AB, Simonsick EM, Naydeck BL, et al. Association of long-distance corridor walk performance with mortality, cardiovascular disease, mobility limitation, and disability. *JAMA.* 2006; 295(17):2018–2026. [PubMed: 16670410]
21. Rautaharju PM, MacInnis PJ, Warren JW, Wolf HK, Rykers PM, Calhoun HP. Methodology of ECG interpretation in the dalhousie program; NOVACODE ECG classification procedures for clinical trials and population health surveys. *Methods Inf Med.* 1990; 29(4):362–374. [PubMed: 2233384]
22. Alonso A, Agarwal SK, Soliman EZ, et al. Incidence of atrial fibrillation in whites and african-americans: The atherosclerosis risk in communities (ARIC) study. *Am Heart J.* 2009; 158(1):111–117. [PubMed: 19540400]
23. Robbins J, Nelson JC, Rautaharju PM, Gottdiener JS. The association between the length of the QT interval and mortality in the cardiovascular health study. *Am J Med.* 2003; 115(9):689–694. [PubMed: 14693320]
24. Furberg CD, Psaty BM, Manolio TA, Gardin JM, Smith VE, Rautaharju PM. Prevalence of atrial fibrillation in elderly subjects (the cardiovascular health study). *Am J Cardiol.* 1994; 74(3):236–241. [PubMed: 8037127]
25. Psaty BM, Lee M, Savage PJ, Rutan GH, German PS, Lyles M. Assessing the use of medications in the elderly: Methods and initial experience in the cardiovascular health study. the cardiovascular health study collaborative research group. *J Clin Epidemiol.* 1992; 45(6):683–692. [PubMed: 1607909]
26. Auer R, Bauer DC, Marques-Vidal P, et al. Association of major and minor ECG abnormalities with coronary heart disease events. *JAMA.* 2012; 307(14):1497–1505. [PubMed: 22496264]
27. Rautaharju PM, Surawicz B, Gettes LS, et al. AHA/ACCF/HRS recommendations for the standardization and interpretation of the electrocardiogram: Part IV: The ST segment, T and U waves, and the QT interval: A scientific statement from the american heart association electrocardiography and arrhythmias committee, council on clinical cardiology; the american college of cardiology foundation; and the heart rhythm society. endorsed by the international society for computerized electrocardiology. *J Am Coll Cardiol.* 2009; 53(11):982–991. [PubMed: 19281931]
28. Schwartz PJ, Stramba-Badiale M, Crotti L, et al. Prevalence of the congenital long-QT syndrome. *Circulation.* 2009; 120(18):1761–1767. [PubMed: 19841298]
29. Hayashi K, Fujino N, Uchiyama K, et al. Long QT syndrome and associated gene mutation carriers in japanese children: Results from ECG screening examinations. *Clin Sci (Lond).* 2009; 117(12):415–424. [PubMed: 19371231]
30. Kirchhof P, Eckardt L, Franz MR, et al. Prolonged atrial action potential durations and polymorphic atrial tachyarrhythmias in patients with long QT syndrome. *J Cardiovasc Electrophysiol.* 2003; 14(10):1027–1033. [PubMed: 14521653]
31. Satoh T, Zipes DP. Cesium-induced atrial tachycardia degenerating into atrial fibrillation in dogs: Atrial torsades de pointes? *J Cardiovasc Electrophysiol.* 1998; 9(9):970–975. [PubMed: 9786077]
32. Lowe JS, Stroud DM, Yang T, Hall L, Atack TC, Roden DM. Increased late sodium current contributes to long QT-related arrhythmia susceptibility in female mice. *Cardiovasc Res.* 2012; 95(3):300–307. [PubMed: 22562703]
33. Zygmunt AC, Eddlestone GT, Thomas GP, Nesterenko VV, Antzelevitch C. Larger late sodium conductance in M cells contributes to electrical heterogeneity in canine ventricle. *Am J Physiol Heart Circ Physiol.* 2001; 281(2):H689–97. [PubMed: 11454573]
34. Song Y, Shryock JC, Belardinelli L. An increase of late sodium current induces delayed afterdepolarizations and sustained triggered activity in atrial myocytes. *Am J Physiol Heart Circ Physiol.* 2008; 294(5):H2031–9. [PubMed: 18310511]
35. Voigt N, Li N, Wang Q, et al. Enhanced sarcoplasmic reticulum Ca<sup>2+</sup> leak and increased Na<sup>+</sup>-Ca<sup>2+</sup> exchanger function underlie delayed afterdepolarizations in patients with chronic atrial fibrillation. *Circulation.* 2012; 125(17):2059–2070. [PubMed: 22456474]

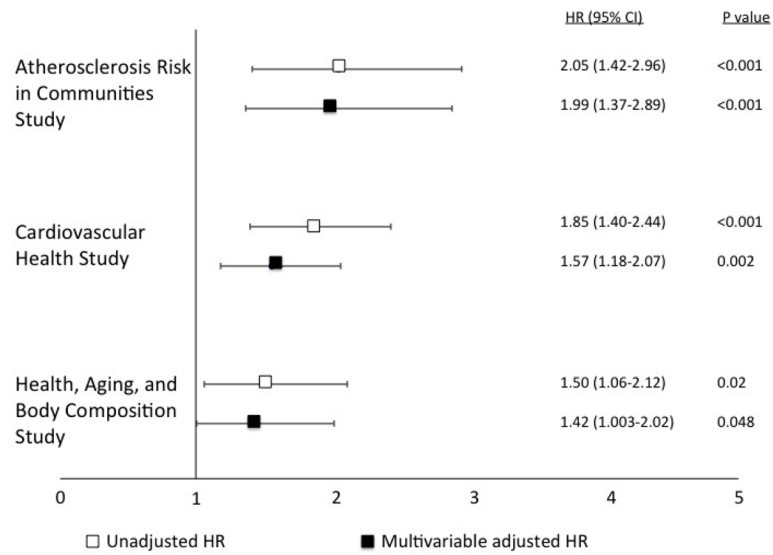


**Figure 1. Kaplan-Meier curves for incident atrial fibrillation in Atherosclerosis Risk in Communities (ARIC) study, Cardiovascular Health Study (CHS), and Health, Aging, and Body Composition (Health ABC) study participants with and without a prolonged corrected QT interval**

AF = atrial fibrillation. QT<sub>Fram</sub> = QT interval corrected by Framingham formula.

Differences in proportions with and without AF are compared using log-rank tests.

Individuals with a prolonged QT<sub>Fram</sub> had a significantly increased risk of AF in ARIC ( $p < 0.001$ ), CHS ( $p < 0.001$ ) and Health ABC ( $p = 0.02$ ), compared to those without.



**Figure 2. Hazard ratios (HR) and 95% confidence intervals (CI) for risk of atrial fibrillation for individuals with prolonged QT intervals corrected by the Framingham formula**  
 Multivariable models are adjusted for age, race, sex, body mass index, study center, hypertension, diabetes, coronary heart disease, and congestive heart failure. The vertical axis represents a HR of 1. Error bars denote 95% confidence intervals.

**Table 1**

Participants' baseline characteristics

Variable	Atherosclerosis Risk in Communities Study (n=14,538)	Cardiovascular Health Study (n=4,745)	Health, Aging, and Body Composition Study (n=2,396)
Age, in years	54 ± 5.7	72 ± 5.5	74 ± 2.8
Female	8,115 (56%)	2,809 (59%)	1,274 (53%)
Body mass index, in kg/m <sup>2</sup>	28 ± 5.4	27 ± 4.8	27 ± 4.8
Race			
White	10,739 (74%)	4,996 (84%)	1,428 (60%)
Black	3,754 (26%)	718 (15%)	968 (40%)
Asian	32 (0.2%)	4 (0.1%)	0 (0%)
American Indian/Alaskan Native	13 (0.1%)	9 (0.2%)	0 (0%)
Other	0 (0%)	18 (0.4%)	0 (0%)
Hypertension	4,875 (34%)	2,682 (57%)	1,389 (58%)
Diabetes	1,660 (12%)	693 (15%)	345 (14%)
Coronary heart disease	607 (4.2%)	791 (17%)	466 (19%)
Congestive heart failure	626 (4.4%)	124 (2.6%)	64 (2.7%)
QT (uncorrected), in ms	399 ± 30	409 ± 34	412 ± 33
QT <sub>Fram</sub> (Framingham), in ms	410 ± 16	416 ± 18	420 ± 21
QT <sub>Frd</sub> (Fridericia), in ms	410 ± 17	416 ± 19	421 ± 22
QT <sub>B</sub> (Bazett), in ms	416 ± 17	420 ± 19	426 ± 23
QT <sub>H</sub> (Hodge), in ms	410 ± 18	417 ± 21	421 ± 22
Long QT <sub>Fram</sub>	174 (1.2%)	144 (3.0%)	118 (4.9%)
Short QT <sub>Fram</sub>	996 (6.9%)	177 (3.7%)	91 (3.8%)
Follow-up, in years	19.7 (17.1–20.7)	14.0 (8.7–18.2)	7.0 (3.8–9.8)
Incident atrial fibrillation	1,470 (10%)	1,271 (27%)	562 (23%)

Values are reported as mean ± standard deviation, median (interquartile range), or number (percent).

Table 2

Hazard ratios and 95% confidence intervals for risk of atrial fibrillation among individuals with an abnormally long QT interval corrected by Bazett, Fridericia, and Hodge formulae.

	Atherosclerosis Risk in Communities Study		Cardiovascular Health Study		Health, Aging, and Body Composition Study	
	Unadjusted	Adjusted*	Unadjusted	Adjusted*	Unadjusted	Adjusted*
<b>Bazett</b>						
<b>HR</b>	2.07	1.56	1.45	1.29	1.38	1.30
<b>95% CI</b>	1.62–2.64	1.22–2.01	1.13–1.86	1.01–1.66	1.06–1.78	1.002–1.69
<b>P value</b>	<0.001	<0.001	0.003	0.045	0.02	0.048
<b>Fridericia</b>						
<b>HR</b>	1.94	1.82	1.79	1.48	1.63	1.57
<b>95% CI</b>	1.39–2.72	1.29–2.57	1.40–2.32	1.15–1.91	1.18–2.24	1.14–2.18
<b>P value</b>	<0.001	0.001	<0.001	0.003	0.003	0.006
<b>Hodge</b>						
<b>HR</b>	1.92	1.67	1.51	1.22	1.70	1.58
<b>95% CI</b>	1.44–2.57	1.24–2.25	1.20–1.89	0.97–1.54	1.27–2.27	1.18–2.12
<b>P value</b>	<0.001	0.001	<0.001	0.09	<0.001	0.002

\* Adjusted for age, race, sex, body mass index, study center, hypertension, diabetes, heart failure, and coronary heart disease.

HR = hazard ratio. CI = confidence interval.

Table 3

Hazard ratios and 95% confidence intervals for risk of atrial fibrillation among individuals with an abnormally short corrected QT interval

	Atherosclerosis Risk in Communities Study		Cardiovascular Health Study		Health, Aging, and Body Composition Study	
	Unadjusted	Adjusted*	Unadjusted	Adjusted*	Unadjusted	Adjusted*
<b>Framingham</b>						
<b>HR</b>	0.79	0.84	1.06	1.09	1.34	1.37
<b>95% CI</b>	0.63–0.99	0.66–1.06	0.79–1.42	0.81–1.47	0.91–1.99	0.92–2.04
<b>P value</b>	0.039	0.14	0.71	0.57	0.14	0.12
<b>Bazett</b>						
<b>HR</b>	0.68	0.83	0.80	0.83	1.07	1.11
<b>95% CI</b>	0.48–0.95	0.59–1.18	0.49–1.28	0.46–1.35	0.63–1.82	0.65–1.89
<b>P value</b>	0.02	0.31	0.35	0.46	0.79	0.70
<b>Fridericia</b>						
<b>HR</b>	0.75	0.76	1.05	1.11	1.01	1.08
<b>95% CI</b>	0.61–0.91	0.61–0.94	0.81–1.35	0.86–1.44	0.67–1.52	0.71–1.63
<b>P value</b>	0.004	0.01	0.74	0.42	0.97	0.72
<b>Hodge</b>						
<b>HR</b>	0.75	0.79	1.13	1.18	0.95	1.02
<b>95% CI</b>	0.62–0.91	0.65–0.97	0.89–1.44	0.94–1.51	0.63–1.43	0.67–1.54
<b>P value</b>	0.003	0.02	0.30	0.16	0.80	0.93

\* Adjusted for age, race, sex, body mass index, study center, hypertension, diabetes, heart failure, and coronary heart disease.

HR = hazard ratio. CI = confidence interval.