

# Resveratrol Protects Mouse Oocytes from Methylglyoxal-Induced Oxidative Damage

Yu Liu<sup>1</sup>, Xiao-Qin He<sup>2</sup>, Xin Huang<sup>1</sup>, Lu Ding<sup>3</sup>, Lin Xu<sup>1</sup>, Yu-Ting Shen<sup>2</sup>, Fei Zhang<sup>2</sup>, Mao-Bi Zhu<sup>1</sup>, Bai-Hui Xu<sup>1</sup>, Zhong-Quan Qi<sup>1\*</sup>, Hai-Long Wang<sup>1\*</sup>

**1** Organ Transplantation Institute, Medical College, Xiamen University, Xiamen City, Fujian Province, China, **2** Department of Gynaecology and Obstetrics, Zhongshan Hospital, Xiamen University, Xiamen City, Fujian Province, China, **3** Center of Reproductive Medicine, Xiamen Maternity and Child Health Care Hospital, Xiamen City, Fujian Province, China

## Abstract

Methylglyoxal, a reactive dicarbonyl compound, is mainly formed from glycolysis. Methylglyoxal can lead to the dysfunction of mitochondria, the depletion of cellular anti-oxidation enzymes and the formation of advanced glycation ends. Previous studies showed that the accumulation of methylglyoxal and advanced glycation ends can impair the oocyte maturation and reduce the oocyte quality in aged and diabetic females. In this study, we showed that resveratrol, a kind of phytoalexin found in the skin of grapes, red wine and other botanical extracts, can alleviate the adverse effects caused by methylglyoxal, such as inhibition of oocyte maturation and disruption of spindle assembly. Besides, methylglyoxal-treated oocytes displayed more DNA double strands breaks and this can also be decreased by treatment of resveratrol. Further investigation of these processes revealed that methylglyoxal may affect the oocyte quality by resulting in excessive reactive oxygen species production, aberrant mitochondrial distribution and high level lipid peroxidation, and resveratrol can block these cytotoxic changes. Collectively, our results showed that resveratrol can protect the oocytes from methylglyoxal-induced cytotoxicity and this was mainly through the correction of the abnormality of cellular reactive oxygen species metabolism.

**Citation:** Liu Y, He X-Q, Huang X, Ding L, Xu L, et al. (2013) Resveratrol Protects Mouse Oocytes from Methylglyoxal-Induced Oxidative Damage. PLoS ONE 8(10): e77960. doi:10.1371/journal.pone.0077960

**Editor:** Qing-Yuan Sun, Institute of Zoology, Chinese Academy of Sciences, China

**Received:** July 9, 2013; **Accepted:** September 5, 2013; **Published:** October 23, 2013

**Copyright:** © 2013 Liu et al. This is an open-access article distributed under the terms of the Creative Commons Attribution License, which permits unrestricted use, distribution, and reproduction in any medium, provided the original author and source are credited.

**Funding:** This work was supported by grants from the National Natural Science Foundation of China (No. 31201695) and Major State Scientific Research Program of China (No. 2012CBA01303). The funders had no role in study design, data collection and analysis, decision to publish, or preparation of the manuscript.

**Competing Interests:** The authors have declared that no competing interests exist.

\* E-mail: hailongwang@xmu.edu.cn (H-LW); oti@xmu.edu.cn (Z-QQ)

## Introduction

Methylglyoxal (MG), a highly reactive dicarbonyl compound, is a metabolic byproduct of glucose[1]. MG is mainly derived from glycolysis[2] and increasing evidence reveals that MG can be generated by degradation of carbohydrates in foods and beverages such as soy sauces and coffee[3,4]. MG attacks the arginine, lysine and cysteine residues of proteins to form irreversible advanced glycation end products (AGEs), which subsequently leads to more cross-linking and degradation of proteins[5]. This accumulation of AGEs is considered to be responsible for the long-term complications of diabetes and ageing[6,7]. In addition, MG contributes to the cytotoxicity, causing cell damages like apoptosis[8]. MG-induced apoptosis occurred through mitochondrion-dependent processes and the imbalance of cellular redox state[9]. Recently, two studies focused on the cytotoxicity of MG on the female reproductive function, especially on the oocytes[10,11]. Oocytes maturation can be seriously disturbed by the MG-induced breakage of DNA, disruption of spindle assembly, depletion of anti-oxidation enzymes and disorder of mitochondrial function. All of these may root in the elevation of intracellular reactive oxygen specie (ROS) level and this implies that a supplement of anti-oxidant may counteract the deleterious effect of MG on oocytes.

Resveratrol (3, 5, 4'-trihydroxystilbene) is a common phytoalexin which belongs to the large family of biologically active

substances existing in peanuts, Itadori tee, skin of grapes and red wine[12]. Mounting evidence suggests that resveratrol could act as a powerful anti-cancer[13], anti-inflammatory[14], anti-diabetes[15] and anti-oxidation[16] agent. Moreover, resveratrol functions as a potent SIRT1 activator which is capable of mimicking the effects of calorie restriction and regulating longevity in lower organisms[17]. Most strikingly, resveratrol can exert a powerful anti-oxidation effect in organisms. This effect can be illustrated by its well-recognized effect to the low density lipoprotein oxidation[18]. Meanwhile, resveratrol scavenges cellular ROS and corrects radical-induced responses such as DNA damage[19], imbalance of mitochondria redox state[20], inactivation of cytochrome P450[21] and interfering cellular signal transductions[22].

We hypothesized that supplement of resveratrol could counteract MG-induced cytotoxicity in mouse oocytes. In this study, oocytes were divided into three groups: control, MG-treated and resveratrol-MG-treated. We examined DNA double-strand break (DSBs), the rates of *in vitro* oocyte maturation (IVM), spindle assembly, chromosome congression, intracellular ROS level, mitochondrial distribution and lipid peroxidation level. Our results showed that resveratrol could reverse the adverse effect of MG on mouse oocytes.

## Materials and Methods

### Ethic statement

Mice care and use were conducted in strict accordance with the recommendations in the Guide for the Care and Use of Laboratory Animals of the National Institutes of Health. The protocol was approved by Animal Studies Committee of Xiamen University, China (approval ID: XMUMC 2011-10-08). ICR mice were housed and bred at temperature-controlled room, received the standard murine chow diet, and kept on a cycle of 12 h light and 12 h dark, with the darkness starting from 19:00. The mice were killed by cervical dislocation. All efforts were made to minimize suffering and the only procedures performed on the dead animals were getting ovaries and the collection of oocytes from the ovaries.

### Methylglyoxal and resveratrol treatment

Methylglyoxal (Sigma, USA) was dissolved in phosphate buffered saline (PBS) and stored at a stock concentration of 100 mM. Resveratrol (Sigma, USA) was dissolved in dimethylsulfoxide (DMSO) and stored at a stock concentration of 50 mM. The MG stock solutions were serially diluted in M2 medium (Sigma, USA) to working concentration of 75  $\mu$ M. The resveratrol stock solutions were diluted in M2 medium plus MG to working concentration of 5, 10 and 25  $\mu$ M with a final DMSO content which is below 0.1% in the medium (v/v).

### Oocyte collection and culture

Fully grown, germinal vesicle (GV)-intact oocytes were retrieved by puncturing antral follicles with sterile needles and washed thoroughly with M2 medium. Cumulus cells surrounding the oocytes were removed by gentle pipetting through a narrow-bore glass pipette. Denuded oocytes were cultured in M2 medium with or without 75  $\mu$ M MG and different concentration of resveratrol to specific stages under mineral oil at 37°C in a humidified atmosphere of 5% CO<sub>2</sub> in air. GV-stage oocytes which were stained with  $\gamma$ -H2AX or MitoTracker Red were cultured for 6 h in the presence of 2.5  $\mu$ M milrinone (Sigma, USA). Metaphase I (MI)-stage and metaphase II (MII)-stage oocytes were cultured in M2 medium for 8.5 h and 12 h.

### Immunofluorescence and confocal microscopy

The protocol was basically the same as described in our previous studies[23–25]. Oocytes were fixed with 4% paraformaldehyde for 30 min. After being permeabilized with 0.5% Triton X 100 at room temperature for 30 min, oocytes were blocked in 1% bull serum albumin (BSA)-supplemented PBS for 1 h and then incubated overnight at 4°C with 1:100 rabbit anti- $\gamma$ -H2AX antibody (Abcam, USA), 1:30 sheep polyclonal to BubR1 antibody (Abcam, USA) or 1:200 mouse anti- $\alpha$ -tubulin-FITC antibody (Sigma, USA), respectively. After three washes in PBS containing 0.1% Tween 20 and 0.01% Triton X-100 for 5 min each, the oocytes were labeled with Donkey Anti-Sheep IgG Antibodies Conjugates Alexa Fluor 546 (Invitrogen, USA, 1:250, to stain BubR1) or Donkey Anti-Rabbit IgG Antibodies Conjugates Alexa Fluor 546 (Invitrogen, USA, 1:800, to stain  $\gamma$ -H2AX) for 1 h at room temperature. Then after three washes in PBS containing 0.1% Tween 20 and 0.01% Triton X-100 for 5 min each, the oocytes were co-stained and mounted on glass slides with mounting medium with DAPI (Vector, Switzerland). Finally, the oocytes were examined with an FV1000 confocal laser scanning microscope (Olympus, Japan).

### Determination of ROS level

To determine the quantity of ROS production, oocytes were loaded with the oxidation-sensitive fluorescent probe [dichlorofluorescein (DCFH)] by incubation for 30 min at 37°C in M2 medium supplemented with 0.1% DCFH diacetate (DCFH-DA) (Beyotime, China). After three times wash in M2 medium, green fluorescence of oocytes in all group was detected with the FV1000 confocal laser scanning microscope with 450–490 nm (excitation) and 520 nm (emission) filters under the same condition.

### Assessment of mitochondrial distribution

Mitochondrial staining was performed with a MitoTracker Red (Invitrogen, USA) according to the manufacturer's instructions. Briefly, live denuded oocytes were cultured in M2 medium containing 200 nM MitoTracker Red for 30 min at 37°C, 5% CO<sub>2</sub> in air. After washes, stained oocytes were fixed and viewed by the FV1000 confocal laser scanning microscope.

### Oocyte lipid peroxidation assay

Lipid peroxidation assay was performed with 4, 4-difluoro-5- (4-phenyl-1, 3-butadienyl)-4-bora-3a, 4a-diaza-s-indacene-3-undecanoic acid 581/591C11 (BODIPY D3861, Invitrogen, USA) according to the manufacturer's instructions. Briefly, oocytes were incubated under oil in 10  $\mu$ M dye for 30 min at 37°C in 5% CO<sub>2</sub> in air. The dye loaded oocytes were then washed twice in M2 medium and mounted on slides. Green and red fluorescence of BODIPY were determined using the FV1000 confocal laser scanning microscope.

### Statistical analysis

At least three replicates were conducted and 30–40 oocytes were used for each treatment. Data (mean  $\pm$  SEM) were analyzed by ANOVA using SPSS software (IBM Corp, USA) followed by the Pearson's chi-square test. The number of oocytes was labeled in parentheses as (n). Difference at  $P < 0.05$  was considered to be statistically significant and different superscript letters in the figures indicate statistically significant differences.

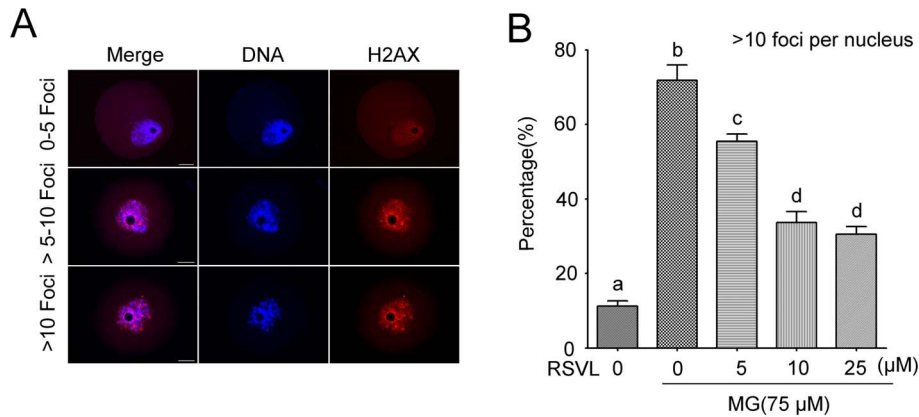
## Results

### Resveratrol protects against MG-induced DNA breaks

Recent studies have shown that MG may lead to oxidative damage of oocytes via the formation of ROS[10,11]. ROS may contribute to oxidative stress, resulting in DNA breaks[26]. Therefore we first examined the effects of resveratrol on the DNA damages. We immunoprobed GV oocytes with a  $\gamma$ -H2AX (marker of DNA DSBs) antibody, and found very significant amounts of  $\gamma$ -H2AX foci associated with chromatin in the oocytes incubated with MG. Oocytes with over 10 foci in nucleus obviously increased (**Fig. 1A, B**). However, this MG-induced DNA damage could be prevented by different concentrations of resveratrol and oocytes with high intense  $\gamma$ -H2AX staining significantly reduced in a dose-dependent manner (Control: 11.2 $\pm$ 1.5%, n = 121; MG-treated: 71.8 $\pm$ 4.1%, n = 120; resveratrol-MG-treated: 5  $\mu$ M resveratrol: 55.5 $\pm$ 2.0%, n = 116; 10  $\mu$ M resveratrol: 33.7 $\pm$ 2.9%, n = 128; 25  $\mu$ M resveratrol: 30.6 $\pm$ 2.0%, n = 112) (**Fig. 1A, B**). This result indicated that resveratrol played a protective role in MG induced DNA damage.

### Effect of MG and resveratrol on oocytes maturation

We next found that resveratrol rescued MG-induced oocyte maturation delay. Denuded GV oocytes were treated with 75  $\mu$ M MG for 12 hours, and the percentage of oocytes with extruded



**Figure 1. Induction of  $\gamma$ -H2AX foci in GV oocytes following MG and resveratrol (RSVL) treatment.** Oocytes were blocked at the GV stage in M2 medium plus 2.5  $\mu$ M milrinone and were cultured with or without 75  $\mu$ M MG and different concentration of resveratrol for 6 h. DNA and  $\gamma$ -H2AX were stained and the results show that resveratrol can effectively protect MG-induced the formation of  $\gamma$ -H2AX, the protein marker of DSB. (A) Representative samples of control GV-stage oocytes with  $\gamma$ -H2AX 0–5 foci, >5–10 foci and >10 foci. Red,  $\gamma$ -H2AX; Blue, DNA. Scale bar = 20  $\mu$ m. (B) The proportion of GV oocytes with  $\gamma$ -H2AX >10 foci after MG and different concentration of resveratrol treatment (5, 10 and 25  $\mu$ M). Data are mean  $\pm$  SEM of three independent experiments. Different letters denote statistically significant differences ( $P < 0.05$ ). doi:10.1371/journal.pone.0077960.g001

first polar body (PB1) was significantly lower than that in control group. We added resveratrol into the culture medium and further found that resveratrol reversely affected MG-induced decrease of PB1 extrusion rate (Control:  $80.5 \pm 1.2\%$ ,  $n = 207$ ; MG-treated:  $21.8 \pm 2.3\%$ ,  $n = 221$ ; resveratrol-MG-treated: 5  $\mu$ M resveratrol:  $27.7 \pm 2.0\%$ ,  $n = 225$ ; 10  $\mu$ M resveratrol:  $40.8 \pm 2.1\%$ ,  $n = 205$ ; 25  $\mu$ M resveratrol:  $53.3 \pm 3.4\%$ ,  $n = 227$ ) (Fig. 2A). We also quantitatively analyzed the kinetics of PB1 formation and found that resveratrol effectively protected the oocytes from MG-induced PB1 extrusion delay (Linear regression for control group:  $y = 16.23x - 115.5$ ,  $p < 0.05$ ; for 75  $\mu$ M MG group:  $y = 13.85x - 135$ ,  $p < 0.05$ ; for 25  $\mu$ M resveratrol-MG-treated:  $y = 14.86x - 130.9$ ,  $p < 0.05$ ;  $y$ : rate of PB1 extrusion (%);  $x$ : the time of IVM (h)) (Fig. 2B).

### Resveratrol prevents MG-induced disturbances in spindle formation and chromosome congression

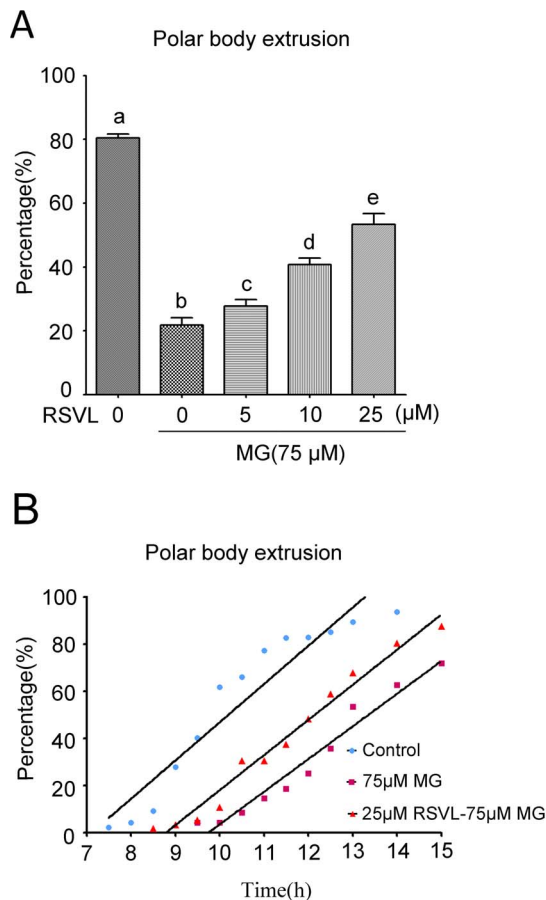
Normal metaphase I (MI) spindles displayed a typical shuttle shape and located to the periphery of the oocyte. Chromosomes were aligned on equatorial plate where they were tightly bound to kinetochore microtubules. The longitudinal axis of the spindle, which traversed the spindle poles, was always perpendicular to the adjacent plasma membrane (Fig. 3A). Metaphase II (MII) spindles were found to locate differently in oocytes, but still maintained their shuttle shape appearance. The MII spindle longitudinal axis became nearly parallel to the adjacent plasma membrane (Fig. 3B). But after the treatment of MG, we observed the remarkable deformations of MI spindle which tended to elongate. The chromosomes were dispersed throughout the spindle and no obvious metaphase plate was formed. MII spindle was also prone to be longer and thinner and exhibited an abnormal localization (Fig. 3A, B). Resveratrol could effectively attenuate these disturbances and more MI and MII oocytes could undergo a correct process of spindle formation and chromosome congression under the resveratrol-treated condition (**Abnormal morphology of MI**: Control:  $6.3 \pm 1.4\%$ ,  $n = 161$ ; MG-treated:  $57.8 \pm 2.0\%$ ,  $n = 143$ ; resveratrol-MG-treated: 5  $\mu$ M resveratrol:  $57.8 \pm 2.0\%$ ,  $n = 143$ ; 10  $\mu$ M resveratrol:  $37.0 \pm 1.8\%$ ,  $n = 149$ ; 25  $\mu$ M resveratrol:  $32.1 \pm 1.6\%$ ,  $n = 145$ . **Abnormal morphology of MII**: Control:  $9.0 \pm 0.7\%$ ,  $n = 145$ ; MG-treated:  $54.8 \pm 3.9\%$ ,  $n = 145$ ;

resveratrol-MG-treated: 5  $\mu$ M resveratrol:  $49.2 \pm 2.1\%$ ,  $n = 147$ ; 10  $\mu$ M resveratrol:  $40.5 \pm 1.1\%$ ,  $n = 141$ ; 25  $\mu$ M resveratrol:  $36.7 \pm 1.4\%$ ,  $n = 150$ ) (Fig. 3C, D). This also confirmed that resveratrol could prevent MG-induced oocyte damage.

### Resveratrol prevents MG-induced ROS formation and mitochondrial dysfunction

A number of studies have shown that MG triggers oxidative stress in cells [27,28]. In oocytes, high ROS content may damage DNA and protein, interfere with the metabolism energy sources, alter the lipid fusibility and then inhibit oocyte maturation. Accordingly, we examined whether excessive ROS formation occurs in MG-treated oocytes, and analyzed the effects of resveratrol on ROS formation. DCFH-DA is a high lipid solubility agent which can penetrate through the cell membranes and be hydrolyzed to DCFH. DCFH can be oxidized in cells to be DCF which could be stimulated to green fluorescence emission. Our result revealed the DCFH-DA fluorescence intensity was significantly higher in the oocytes of the MG-treated groups than control; some fluorescence clusters were dispersed in the oocytes suggesting the existence of ROS (Fig. 4). And the proportion of oocytes with high fluorescence intensity was higher than that in the control group (Table. 1). Treatment with resveratrol dose-dependently attenuated this increase (Table. 1), suggesting that resveratrol may play a role of scavenging ROS in oocytes.

Suboptimal mitochondria can induce abnormal levels of mitochondrial ATP generation, resulting in chromosomal segregation disorder [29], maturation failure [30] and arrested cell division or abnormal cytokinesis [31]. Meanwhile, dysfunction of mitochondrial may produce an abundance of ROS. Therefore we used the mitochondrial probe to examine the distribution of active mitochondria in oocytes. Our results showed that control GV oocytes displayed a homogeneous mitochondrial distribution pattern or a perinuclear mitochondrial distribution pattern (Fig. 5A). However, clustered mitochondria were observed throughout the cytoplasm in MG-treated GV oocytes (Fig. 5B and Table. 1). This effect could be blocked by treatment of resveratrol (Fig. 5C and Table. 1). Similar phenomenon was observed in MII oocytes (Fig. 5D, E, F and Table. 1).



**Figure 2. Effect of MG and resveratrol on meiotic maturation of mouse oocytes.** (A) Percentage of first polar body (PB) extrusion in 75  $\mu$ M MG and different concentrations of resveratrol group. Different letters denote statistical difference at a  $P < 0.05$  level of significance. (B) Kinetics of PB1 extrusion of control group, 75  $\mu$ M MG-treated group and 25  $\mu$ M RSVL-MG-treated group. doi:10.1371/journal.pone.0077960.g002

### Resveratrol prevents MG-induced lipid peroxidation

It has been known that lipid peroxidation generates complex products including hydroperoxides and cleavage products such as malondialdehyde. These products can modify DNA and proteins and exert cytotoxic effects. Besides, the oxidative deterioration of polyunsaturated fatty acid may lose its fusibility and cause the dysfunction of cell membrane. We carried out the lipid peroxidation studies using the fluorescent dye BODIPY. The result revealed significantly increased levels of peroxidative damage in the oolemma membrane of MG-treated oocytes (Fig. 6A, B). Meanwhile, treatment with resveratrol significantly alleviated the lipid peroxidation (Fig. 6C). Also, the portion of oocytes with a low lipid peroxidation in resveratrol treatment was larger than that in MG group (Control:  $5.2 \pm 1.0\%$ ,  $n = 95$ ; MG-treated:  $46.1 \pm 2.8\%$ ,  $n = 89$ ; resveratrol-MG-treated: 5  $\mu$ M resveratrol:  $37.4 \pm 3.2\%$ ,  $n = 94$ ; 10  $\mu$ M resveratrol:  $24.1 \pm 2.4\%$ ,  $n = 91$ ; 25  $\mu$ M resveratrol:  $21.3 \pm 0.7\%$ ,  $n = 89$ ).

### Resveratrol prevents MG from activating the SAC protein BubR1

Stable kinetochore-microtubule (K-MT) attachment is critical for the correct chromosome segregation and unattached or improperly attached chromosomes would activate the spindle

assembly checkpoint (SAC) pathway. Since a lack of stable chromosome arrangement was observed in the above experiments, we assessed the localization of BubR1 in oocytes from MG and resveratrol group, which is a key component of SAC proteins. Specific signals for BubR1 were detected in the MI arrest oocytes in the MG group, while the control and resveratrol with MG group showed no signals of BubR1 (Fig. 7). This result suggested that the MG-inducing MI arrest may be related to the activation of BubR1 and resveratrol could reverse this progress.

### Discussion

Toxic MG and its derivative are supposed to accumulate and play a role in reducing quality and developmental potential of mammalian oocytes of aged and diabetic females [10,32]. Previous studies have shown that MG induces DNA damage, spindle aberrations, lack of mitochondrial integrity and subsequent apoptosis in oocytes [10,11]. In this study, we performed several biological assays related to the oxidative damage, and found that the antioxidant resveratrol could protect oocytes from the damage effect of MG. Our results indicated that resveratrol may present potential protective effects for oocytes, which also provided groundwork for a strategy combatting the long-term exposure of oocytes to supra-physiological MG concentrations in diabetes and ageing females.

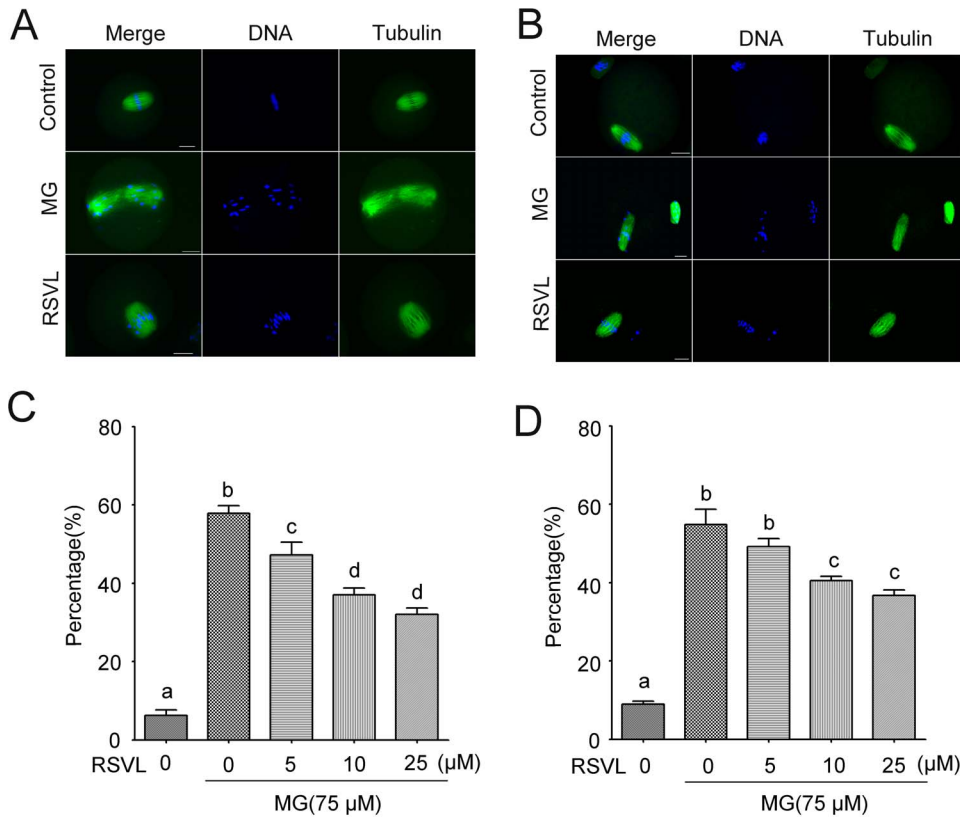
### Resveratrol scavenges ROS induced by MG in oocytes

It has been reported that, as a representative metabolite in diabetes and ageing, MG contributes to excessive ROS in oocytes and subsequently affects the oocyte quality. ROS are produced within the follicle during the ovulatory process and oxidative stimulation has important physiological roles which promote oocyte maturation and follicular wall rupture within the follicle [33]. However, under pathological conditions, the excessive ROS may contribute to oxidative stress. Scientific endeavors have been focusing attention on ROS as an important role associating diabetes, ageing and other diseases with poor oocytes. MG can generate ROS induced by autooxidation [27]. Besides, MG could further modify some enzymes such as superoxide dismutases, glutathione peroxidases and glutathione transferases which result in a decreasing antioxidant defense way [28]. Through interaction with large molecules, MG produces various toxic substances which are so called AGEs and then cumulatively lead to more cellular oxidative stress [5].

Recently, people focused on the protective antioxidant effect of resveratrol to the female reproductive system. Previous studies demonstrated that resveratrol treatment during IVF had beneficial effects on porcine oocyte maturation and subsequent embryonic development [34,35]. Moreover, resveratrol protected against the reduction of fertility ability of mice with aging [36]. All of these protective effects are related to the abilities of resveratrol to eliminate the cellular excessive ROS in both oocytes and embryos. In our study, resveratrol scavenged ROS induced by MG (Fig. 4 and Table. 1). We considered it as the essence of the protective effect of resveratrol to the MG-induced damage to oocytes.

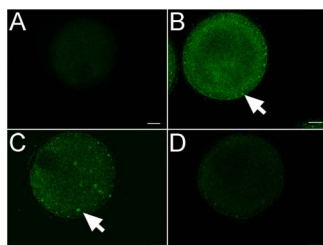
### Resveratrol could reduce DSBs contributed by MG

DSBs can be induced by endogenous metabolites and exogenous stimulations such as ROS [26]. Unlike programmed DNA damage, the ROS-induced abnormal DSBs of cellular DNA, if not repaired immediately, can induce chromatin remodeling, cell cycle arrest, cell cycle delay, apoptosis or other forms on cell death [37,38]. DNA strand breakage could be induced by the

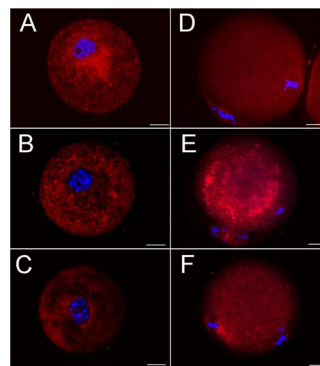


**Figure 3. Effect of MG and resveratrol on spindle formation and chromosome alignment of MI and MII oocytes.** (A) Representative sample of control group, MG-treated group and RSVL-MG-treated group possessing various shapes of MI spindle (green) and chromosomes (blue). Normal spindles displayed a typical shuttle shape and located to the periphery of the oocyte. Chromosomes were aligned exactly on equatorial plate. MG can obviously induce a deformation of spindle and a disturbance of chromosome alignment and this abnormal morphology can be prevented by resveratrol. (B) Representative sample of control group, 75  $\mu$ M MG-treated group and RSVL-MG-treated group possessing various shapes of MII spindle and chromosomes. Scale bar = 20  $\mu$ m. (C) and (D) Percentage of oocytes with abnormal spindle and misaligned chromosomes in MI and MII oocytes from control group, MG-treated group and different concentrations of RSVL-MG-treated group (5, 10 and 25  $\mu$ M). Data are mean  $\pm$  SEM of three independent experiments. Different letters denote statistically significant differences ( $P < 0.05$ ) doi:10.1371/journal.pone.0077960.g003

ROS generated from the reaction of MG with amino acids[39]. It has been reported that antioxidant genistein protected MG-induced oxidative DNA damage and cell injury in human mononuclear cells[40]. The results were similar to ours, suggesting that a supplement of antioxidants may prevent the formations of DSBs. In fact, there are a few of spontaneous DSBs occurring at



**Figure 4. Effect of MG and resveratrol treatment on ROS in oocytes.** MI-stage oocytes were incubated in M2 medium plus 0.1% DCFH diacetate (DCFH-DA) for 30 mins. The Effect of MG and resveratrol on ROS production can be measured by the DCFH fluorescence. (A) Control group; (B) and (C) MG-treated group; (D) RSVL-MG-treated group. Arrows show the cortex of oocytes with high level of ROS. Scale bar = 20  $\mu$ m. doi:10.1371/journal.pone.0077960.g004



**Figure 5. Effect of MG and resveratrol treatment on distribution of mitochondria in meiosis.** (A) and (D) Representative mitochondrial distribution patterns detected by fluorescence microscopy using MitoTracker Red at GV and MII stage in control group. (B) and (E) Representative mitochondrial distribution patterns at GV and MII stage in MG-treated group. (C) and (F) Representative mitochondrial distribution patterns at GV and MII stage in RSVL-MG-treated group. Scale bar = 20  $\mu$ m. doi:10.1371/journal.pone.0077960.g005

**Table 1.** Effect of methylglyoxal and resveratrol on the ROS level and mitochondria distribution of oocytes.

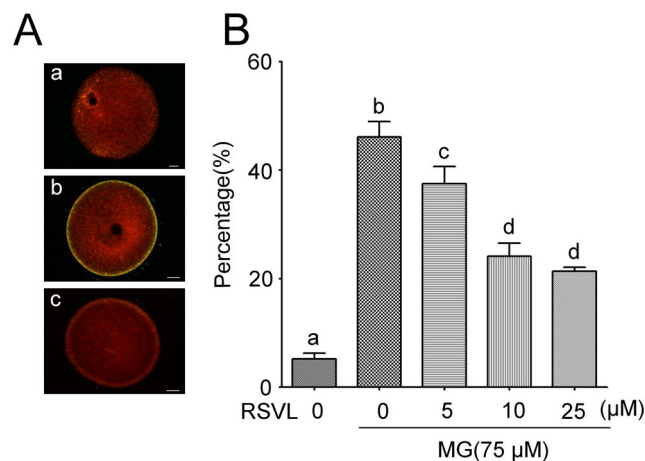
	ROS Level		Mitochondria Distribution			
	n	High level (%)	n(GV)	Abnormal (%)	n(MII)	Abnormal (%)
Control	84	2(2.3±1.2) <sup>#</sup>	95	14(14.6±1.5) <sup>#</sup>	98	16(16.3±1.1) <sup>#</sup>
75 μM MG	78	40(51.9±3.0)	87	45(51.7±2.6)	87	61(70.6±3.0)
5 μM RSVL-75 μM MG	88	39(44.2±1.6)	87	39(44.6±1.3) <sup>*</sup>	97	56(57.8±2.1)
10 μM RSVL-75 μM MG	80	24(29.5±3.3)	89	30(33.8±2.6) <sup>*</sup>	89	45(50.3±2.9) <sup>*</sup>
25 μM RSVL-75 μM MG	95	25(26.3±0.7) <sup>*</sup>	90	26(28.7±1.6) <sup>*</sup>	89	41(46.1±2.3) <sup>*</sup>

\* $P < 0.05$  and <sup>#</sup> $P < 0.05$  versus MG group.  
doi:10.1371/journal.pone.0077960.t001

the pachytene stage in oocytes. DSB lesions in this phase can be repaired by homologous recombination during which homologous chromosomes form synaptonemal complexes. However, an excess of DSBs induced by ROS can not be reduced by activating the DNA repair systems and this often results in a lower maturation rates. In present study, we considered that DSBs occurred in oocytes those were with more than ten  $\gamma$ -H2AX positive foci per nucleus and resveratrol could reduce the frequency of such occurrences of DSBs in oocytes (**Fig. 1**). Similarly, TUNEL-positive staining of blastocysts demonstrated that MG could disturb the DNA integrity, and this effect could be blocked by resveratrol[41]. Both results supported the notion that resveratrol could protect DNA integrity affected by MG which may contribute to other cytotoxic effects.

#### Effects of Resveratrol and MG on the transition of MI to MII stage

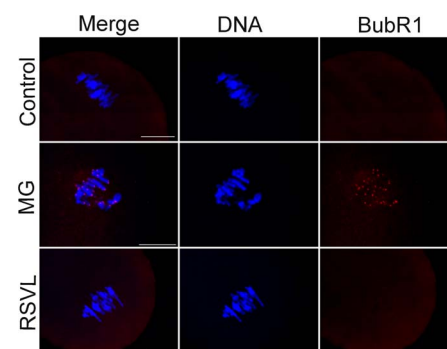
It is known that assembly of meiotic spindle and chromosome congression in MI stage are crucial for female gamete formation and failure of those processes could result in cell cycle arrest[42].



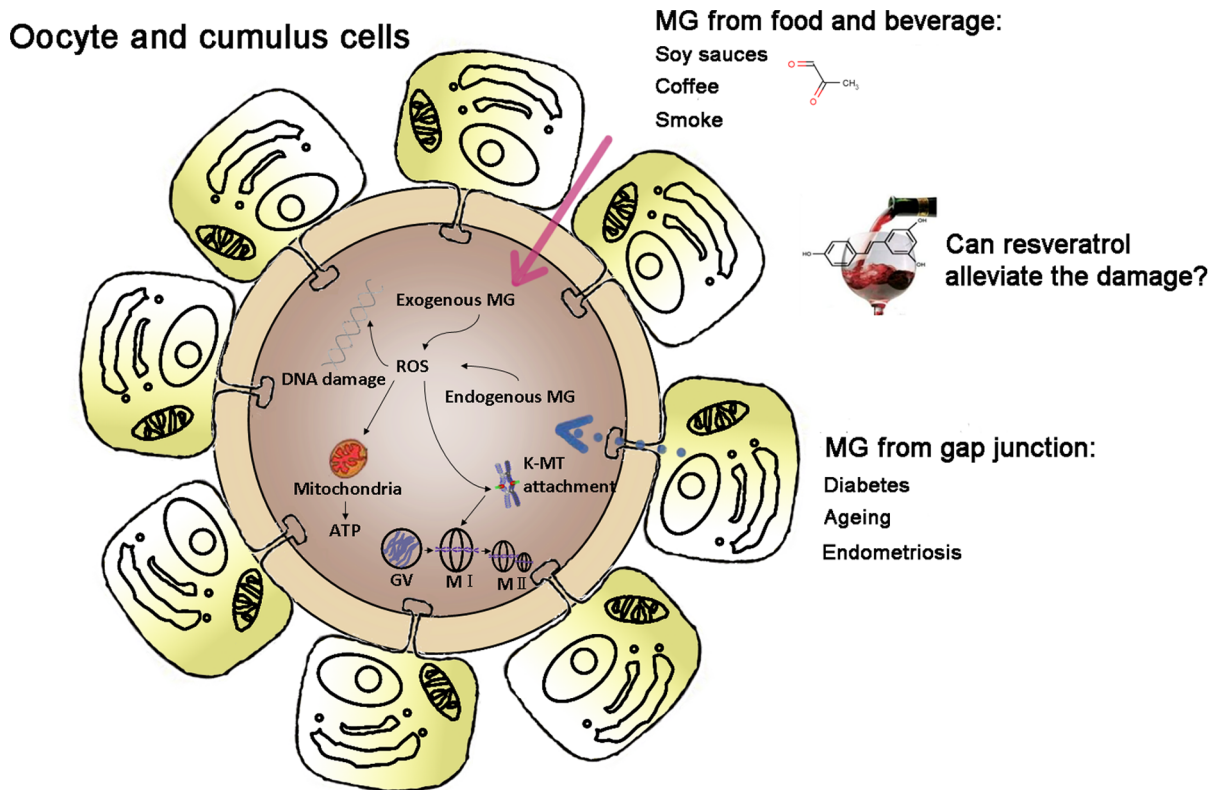
**Figure 6. MG and resveratrol-induced oocyte membrane lipid peroxidation in vitro.** (A) (a), (b) and (c) Representative images of BODIPY-labeled control group, MG-treated group and resveratrol-MG-treated group oocytes. Scale bar = 20 μm. (B) Levels of lipid peroxidation as observed by the of green fluorescence on cortical areas. The bar chart shows the percentage of oocytes with high level of lipid peroxidation from control group, 75 μM MG-treated group and different concentrations of RSVL-MG-treated group (5, 10 and 25 μM). Data are mean±SEM of three independent experiments. Different letters denote statistically significant differences ( $P < 0.05$ ).  
doi:10.1371/journal.pone.0077960.g006

Resveratrol could block MG disturbing the accurate chromosome alignment which is important for correct K-MT attachments and chromosome separation, both of which ensure polar body extrusion and euploid gamete formation. ROS could induce a failure of chromosome congression with evidence stemming from exposures to tert-butyl hydroperoxide (tBH) during IVM. Tert-butyl hydroperoxide resulted in changes in spindle morphology concomitant with defects in chromosome alignment and a higher incidence of aneuploidy[43]. Likewise, antioxidant supplements in food could result lowered incidence of aneuploidy in oocytes[44], which supported our notion that a supplement of antioxidant would counteract exogenous oxidative damage on oocytes.

The SAC is essential for the oocyte's transition from MI to anaphase I (AI). Those proteins including Mad2, Bub1, Bub3 and BubR1 ensure correct segregation of homologous chromosomes and provoke a cell cycle arrest in metaphase if any chromosome is not correctly attached to the bipolar spindle[45]. When the SAC function is blocked, K-MT attachments are no longer surveilled[45]. Chromosomes misaligned in BubR1-depleted oocytes suggested the importance of this surveillance system which make sure that microtubules can encounter kinetochores and not soon be depolymerized[46]. In this case, we found that treatment with MG resulted in decrease of PBE rate, failure of spindle assembly and misaligned chromosomes (**Fig. 2, 3**). So we detected BubR1 in MG-treated oocytes and found that BubR1 was activated. While in resveratrol-treated group we did not detect any signal of BubR1 (**Fig. 7**). This result confirmed that MG may affect K-MT attachment and activated the SAC protein BubR1, and this affect could also be alleviated by resveratrol in mouse oocyte meiosis.



**Figure 7. Effect of MG and resveratrol treatment on the activity of SAC protein BubR1.** Detection of BubR1 in oocytes in control group, MG-treated group and RSVL-MG-treated group. Red, BubR1; blue, DNA. Scale bar = 20 μm.  
doi:10.1371/journal.pone.0077960.g007



**Figure 8. A schematic diagram showing that resveratrol could alleviate MG-induced cytotoxicity in oocytes.**

doi:10.1371/journal.pone.0077960.g008

### Resveratrol, MG and abnormal mitochondrial function

During oocyte maturation, the mitochondrial distribution plays a primary role in energetic metabolism, homeostasis, and cell death[47]. Decreased ATP supply and ROS may lead to abnormal oocyte mitochondrial redistribution and the formation of large heterogeneous mitochondrial fragmentation, and thus insufficient energy supplied to the nuclei and other organelles, which may be a cause for the delay or an arrest of oocyte development.

Immunofluorescent microscopy analysis revealed that MG leads to the inadequate translocation of mitochondria during oocyte maturation. One conspicuous tendency was that the percentage of the perinuclear distribution pattern at GV stage and polarized distribution pattern at MII stage was decreased relative to control whereas the proportion of the homogenous distribution pattern was increased accordingly. In addition, at both GV and MII stages, oocytes treated with MG displayed a much higher percentage of clustering mitochondrial distribution. In contrast, protective affects of resveratrol can ensure the correct spatial remodeling of mitochondria (Fig. 5). Given that the redistribution of mitochondria may allow maturing oocytes to cater to differing energy requirements of various key events, such as germinal vesicle breakdown and metaphase spindle formation and rotation, a prevention effect of resveratrol to the inadequate translocation of mitochondria perhaps offer assistance to overcome maturation delay and spindle defects.

### Resveratrol alleviates MG-induced lipid peroxidation

In most of the studies on oocyte and early embryo, the role of lipid has been overlooked. In fact, lipids such as fatty acids have numerous biological functions involved in energy metabolism and

cell signal transduction[48]. Maintenance of the fusibility of oolemma to ensure accomplishment of meiosis and fertilization of oocyte is thought to be a remarkable function of lipid. However, once attacked by ROS, supraphysiological lipid peroxidation occurred which is thought to be a threat to change plasma membrane fluidity. Smoking constituent benzopyrene impaired oocyte fusibility through oxidative stress and this was mainly due to the lipid peroxidation[49]. Xenobiotic had the same effect[50]. In fact, the excessive ROS can almost result in lipid peroxidation. In our study, we used the lipid peroxidation probe BODIPY and found that resveratrol could decrease the level of lipid peroxidation induced by MG (Fig. 6). Given the integral role of lipid in formation and function of membrane, it was also probable that the aberrations induced by MG and the protective effect of resveratrol reported previously reflected changes in the profiles or integrity of lipid.

In the present study, we showed that resveratrol could play an important role in promoting oocyte quality by preventing MG-induced DNA damage, decrease of PBE rate, abnormal mitochondrial distribution and lipid peroxidation in oocytes (Fig. 8). High level of serum MG and intracellular concentration is closely related to ageing and diabetes. Exogenous MG also exists in diet and water which may become a hazard to oocytes. Our findings may have clinical implications for the treatment of decreased quality oocytes exposed in endogenesis and exogenous MG. Future work should focus on the deep mechanism of the protective effects of resveratrol to the MG-inducing damage such as the alteration of proteome and cellular signal transduction.

## Acknowledgments

We are grateful to Xiao-Hong HUANG, Jing-Ru HUANG, Hua-Xiu SUI and Bao-Ying XIE for their helpful discussions and technical assistance.

## References

- Phillips SA, Thornalley PJ (1993) The formation of methylglyoxal from triose phosphates. *European Journal of Biochemistry* 212: 101–105.
- McLellan AC, Thornalley PJ, Benn J, Sonksen PH (1994) Glyoxalase system in clinical diabetes mellitus and correlation with diabetic complications. *Clin Sci (Lond)* 87: 21–29.
- Degen J, Hellwig M, Henle T (2012) 1,2-dicarbonyl compounds in commonly consumed foods. *J Agric Food Chem* 60: 7071–7079.
- Nakayama K, Nakayama M, Terawaki H, Murata Y, Sato T, et al. (2009) Carbonated soft drinks and carbonyl stress burden. *J Toxicol Sci* 34: 699–702.
- Desai K, Wu L (2007) Methylglyoxal and advanced glycation endproducts: new therapeutic horizons? *Recent Pat Cardiovasc Drug Discov* 2: 89–99.
- Kilhovd BK, Giardino I, Torjesen PA, Birkeland KL, Berg TJ, et al. (2003) Increased serum levels of the specific AGE-compound methylglyoxal-derived hydroimidazolone in patients with type 2 diabetes. *Metabolism* 52: 163–167.
- Brownlee M (2005) The pathobiology of diabetic complications: a unifying mechanism. *Diabetes* 54: 1615–1625.
- Du J, Suzuki H, Nagase F, Akhand AA, Ma XY, et al. (2001) Superoxide-mediated early oxidation and activation of ASK1 are important for initiating methylglyoxal-induced apoptosis process. *Free Radic Biol Med* 31: 469–478.
- Okado A, Kawasaki Y, Hasuiki Y, Takahashi M, Teshima T, et al. (1996) Induction of apoptotic cell death by methylglyoxal and 3-deoxyglucosone in macrophage-derived cell lines. *Biochem Biophys Res Commun* 225: 219–224.
- Chang YJ, Chan WH (2010) Methylglyoxal has injurious effects on maturation of mouse oocytes, fertilization, and fetal development, via apoptosis. *Toxicol Lett* 193: 217–223.
- Tatone C, Heizenrieder T, Di Emidio G, Treffon P, Amicarelli F, et al. (2011) Evidence that carbonyl stress by methylglyoxal exposure induces DNA damage and spindle aberrations, affects mitochondrial integrity in mammalian oocytes and contributes to oocyte ageing. *Hum Reprod* 26: 1843–1859.
- Baur JA, Sinclair DA (2006) Therapeutic potential of resveratrol: the in vivo evidence. *Nat Rev Drug Discov* 5: 493–506.
- Jang M, Cai L, Udeani GO, Slowing KV, Thomas CF, et al. (1997) Cancer chemopreventive activity of resveratrol, a natural product derived from grapes. *Science* 275: 218–220.
- Baek SJ, Wilson LC, Eling TE (2002) Resveratrol enhances the expression of non-steroidal anti-inflammatory drug-activated gene (NAG-1) by increasing the expression of p53. *Carcinogenesis* 23: 425–434.
- Su HC, Hung LM, Chen JK (2006) Resveratrol, a red wine antioxidant, possesses an insulin-like effect in streptozotocin-induced diabetic rats. *Am J Physiol Endocrinol Metab* 290: E1339–1346.
- Fremont L, Belguendouz L, Delpal S (1999) Antioxidant activity of resveratrol and alcohol-free wine polyphenols related to LDL oxidation and polyunsaturated fatty acids. *Life Sci* 64: 2511–2521.
- Howitz KT, Bitterman KJ, Cohen HY, Lamming DW, Lavu S, et al. (2003) Small molecule activators of sirtuins extend *Saccharomyces cerevisiae* lifespan. *Nature* 425: 191–196.
- Frankel EN, Waterhouse AL, Kinsella JE (1993) Inhibition of human LDL oxidation by resveratrol. *Lancet* 341: 1103–1104.
- De Salvia R, Festa F, Ricordy R, Perticone P, Cozzi R (2002) Resveratrol affects in a different way primary versus fixed DNA damage induced by H(2)O(2) in mammalian cells in vitro. *Toxicol Lett* 135: 1–9.
- Sareen D, Darjatmoko SR, Albert DM, Polans AS (2007) Mitochondria, calcium, and calpain are key mediators of resveratrol-induced apoptosis in breast cancer. *Mol Pharmacol* 72: 1466–1475.
- Chun YJ, Kim MY, Guengerich FP (1999) Resveratrol is a selective human cytochrome P450 1A1 inhibitor. *Biochem Biophys Res Commun* 262: 20–24.
- Pirola L, Frojdo S (2008) Resveratrol: one molecule, many targets. *IUBMB Life* 60: 323–332.
- Huang X, Tong JS, Wang ZB, Yang CR, Qi ST, et al. (2011) JNK2 participates in spindle assembly during mouse oocyte meiotic maturation. *Microsc Microanal* 17: 197–205.
- Ding L, Pan R, Huang X, Wang JX, Shen YT, et al. (2012) Changes in histone acetylation during oocyte meiotic maturation in the diabetic mouse. *Theriogenology* 78: 784–792.
- Huang X, Ding L, Pan R, Ma PF, Cheng PP, et al. (2013) WHAMM is required for meiotic spindle migration and asymmetric cytokinesis in mouse oocytes. *Histochem Cell Biol* 139: 525–534.
- Marnett LJ (2000) Oxyradicals and DNA damage. *Carcinogenesis* 21: 361–370.

## Author Contributions

Conceived and designed the experiments: H-LW YL XH. Performed the experiments: YL. Analyzed the data: YL. Contributed reagents/materials/analysis tools: LX X-QH Z-QQ M-BZ FZ. Wrote the paper: YL XH LD. Participated in discussion of the experiment: YL XH Y-TS B-HX.

- Thornalley P, Wolff S, Crabbe J, Stern A (1984) The autoxidation of glyceraldehyde and other simple monosaccharides under physiological conditions catalysed by buffer ions. *Biochim Biophys Acta* 797: 276–287.
- Lankin VZ, Konovalova GG, Tikhaze AK, Nedosugova LV (2012) [The influence of natural dicarbonyls on the antioxidant enzymes activity in vitro and in vivo]. *Biomed Khim* 58: 727–736.
- Schon EA, Kim SH, Ferreira JC, Magalhaes P, Grace M, et al. (2000) Chromosomal non-disjunction in human oocytes: is there a mitochondrial connection? *Hum Reprod* 15 Suppl 2: 160–172.
- Reynier P, May-Panloup P, Chretien MF, Morgan CJ, Jean M, et al. (2001) Mitochondrial DNA content affects the fertilizability of human oocytes. *Mol Hum Reprod* 7: 425–429.
- Ramalho-Santos J, Varum S, Amaral S, Mota PC, Sousa AP, et al. (2009) Mitochondrial functionality in reproduction: from gonads and gametes to embryos and embryonic stem cells. *Hum Reprod Update* 15: 553–572.
- Fujii EY, Nakayama M (2010) The measurements of RAGE, VEGF, and AGEs in the plasma and follicular fluid of reproductive women: the influence of aging. *Fertil Steril* 94: 694–700.
- Agarwal A, Allamaneni SS (2004) Role of free radicals in female reproductive diseases and assisted reproduction. *Reprod Biomed Online* 9: 338–347.
- Kwak SS, Cheong SA, Jeon Y, Lee E, Choi KC, et al. (2012) The effects of resveratrol on porcine oocyte in vitro maturation and subsequent embryonic development after parthenogenetic activation and in vitro fertilization. *Theriogenology* 78: 86–101.
- Lee K, Wang C, Chaille JM, Machaty Z (2010) Effect of resveratrol on the development of porcine embryos produced in vitro. *J Reprod Dev* 56: 330–335.
- Liu M, Yin Y, Ye X, Zeng M, Zhao Q, et al. (2013) Resveratrol protects against age-associated infertility in mice. *Hum Reprod* 28: 707–717.
- van Gent DC, Hoeijmakers JH, Kanaar R (2001) Chromosomal stability and the DNA double-stranded break connection. *Nat Rev Genet* 2: 196–206.
- Kaina B (2003) DNA damage-triggered apoptosis: critical role of DNA repair, double-strand breaks, cell proliferation and signaling. *Biochem Pharmacol* 66: 1547–1554.
- Kang JH (2003) Oxidative damage of DNA induced by methylglyoxal in vitro. *Toxicol Lett* 145: 181–187.
- Wu HJ, Chan WH (2007) Genistein protects methylglyoxal-induced oxidative DNA damage and cell injury in human mononuclear cells. *Toxicol In Vitro* 21: 335–342.
- Huang FJ, Chin TY, Chan WH (2011) Resveratrol protects against methylglyoxal-induced apoptosis and disruption of embryonic development in mouse blastocysts. *Environ Toxicol*.
- Vogt E, Kirsch-Volders M, Parry J, Eichenlaub-Ritter U (2008) Spindle formation, chromosome segregation and the spindle checkpoint in mammalian oocytes and susceptibility to meiotic error. *Mutat Res* 651: 14–29.
- Tarin JJ (1996) Potential effects of age-associated oxidative stress on mammalian oocytes/embryos. *Mol Hum Reprod* 2: 717–724.
- Tarin JJ, Perez-Albala S, Garcia-Perez MA, Cano A (2002) Effect of dietary supplementation with a mixture of Vitamins C and E on fertilization of tertiary butyl hydroperoxide-treated oocytes and parthenogenetic activation in the mouse. *Theriogenology* 57: 869–881.
- Li M, Li S, Yuan J, Wang ZB, Sun SC, et al. (2009) Bub3 is a spindle assembly checkpoint protein regulating chromosome segregation during mouse oocyte meiosis. *PLoS One* 4: e7701.
- Wei L, Liang XW, Zhang QH, Li M, Yuan J, et al. (2010) BubR1 is a spindle assembly checkpoint protein regulating meiotic cell cycle progression of mouse oocyte. *Cell Cycle* 9: 1112–1121.
- Nagai S, Mabuchi T, Hirata S, Shoda T, Kasai T, et al. (2006) Correlation of abnormal mitochondrial distribution in mouse oocytes with reduced developmental competence. *Tohoku J Exp Med* 210: 137–144.
- McKeegan PJ, Sturmev RG (2011) The role of fatty acids in oocyte and early embryo development. *Reprod Fertil Dev* 24: 59–67.
- Sobinoff AP, Pye V, Nixon B, Roman SD, McLaughlin EA (2012) Jumping the gun: smoking constituent BaP causes premature primordial follicle activation and impairs oocyte fusibility through oxidative stress. *Toxicol Appl Pharmacol* 260: 70–80.
- Sobinoff AP, Pye V, Nixon B, Roman SD, McLaughlin EA (2010) Adding insult to injury: effects of xenobiotic-induced prenatally on ovarian development and oocyte fusibility. *Toxicol Sci* 118: 653–666.