

Bromocriptine, a Dopamine (d₂) Receptor Agonist, Used Alone and in Combination with Glipizide in Sub-Therapeutic Doses to Ameliorate Hyperglycaemia

HARISH KUMAR V.S.¹, VINUTHA M.B.², PRADEEP A.N.³, SATHISHA AITHAL⁴, SINDHURA REDDY BALEED⁵, UMAKANT N. PATIL⁶

ABSTRACT

Introduction: Bromocriptine, an ergot derivative, is an agonist at the dopamine₂ receptor and a sympatholytic. It is a well established drug in Parkinsonism, hyperprolactinaemia and acromegaly and it has various other clinical indications like induction of ovulation in female infertility. Bromocriptine has been evaluated in alloxan induced diabetic rats for its anti-hyperglycaemic effect with and without simultaneous use of glipizide.

Methods: Diabetes was induced in albino rats by giving a single subcutaneous injection of alloxan in a dose of 150 mg/kg body weight. After 72 hours of giving alloxan injection, depending upon their blood glucose levels (350mg/dl and above), the rats were included into the study and they were divided into four groups, each comprising of 6 rats (n=24): Group 1 which was taken as control was given distilled water. Group 2 was treated with glipizide, a standard drug. Group 3 was treated with the test

drug, bromocriptine and Group 4 was treated with sub therapeutic doses of test and standard drugs. The drugs were given to the diabetic rats once daily by oral route for 30 consecutive days, in order to assess their effects in terms of reduction in blood glucose levels. Blood glucose was estimated on 0th, 10th, 20th, and 30th days of the study at fixed time intervals.

Results and Conclusion: Bromocriptine, which was used alone, lowered the blood glucose levels appreciably; whereas the concomitant administration of bromocriptine and glipizide in sub therapeutic doses produced a much more appreciable reduction. The results which were obtained in the group which received simultaneous administration of test and standard drugs in sub therapeutic doses were comparable to those of the group which received reference drug, glipizide. Hence, it can be concluded that bromocriptine may serve as a valuable adjunct to available anti-diabetic medication.

Key words: Bromocriptine, Anti-hyperglycaemic, Glipizide, Alloxan

INTRODUCTION

Diabetes is an “iceberg” disease. The increasing worldwide incidence of Diabetes Mellitus (DM) in adults is a global public health burden. Diabetes mellitus is a group of heterogenous disorders in which carbohydrate metabolism is reduced, while those of proteins and lipids are increased. Hyperglycaemia is a common end point for all types of DM and it is an important parameter which can be assessed to evaluate the effectiveness of anti-diabetic drugs. The goals of therapy for diabetes are to alleviate the symptoms which are related to hyperglycaemia and to prevent or reduce the acute and chronic complications of diabetes. Because of its multi-factorial pathogenesis, restoration of normoglycaemia is difficult to achieve and it requires multiple anti-diabetic medications in combination, to produce an additive effect. Therefore, the development of anti-diabetic agents that have novel mechanisms of action and can be used in combination with currently approved medications for the treatment of type 2 Diabetes mellitus, is highly desirable.

The idea of using bromocriptine for the treatment of type-2 diabetes came while the metabolism of migratory birds was studied, in which they develop seasonal insulin resistance and dopamine plays a role in it [1]. This dopamine agonist is thought to potentially decrease insulin resistance and hepatic glucose production through an increase in dopaminergic neurotransmission, which can reset the hypothalamus and improve insulin sensitivity [2]. As dopaminergic activity is also related to the food intake and energy expenditure [3], it is thought that this dopamine receptor agonist plays a role in bringing down hyperglycaemia.

Hence, the present study was undertaken to explore the possible anti-hyperglycaemic action of bromocriptine, which may be an addition to its therapeutic utility. Our objectives were as follows:

- To study the anti-hyperglycaemic activity of bromocriptine.
- To compare its anti-hyperglycaemic activity with that of glipizide, which is an established anti-diabetic drug.
- To study the anti-hyperglycaemic activity of sub therapeutic doses of bromocriptine and glipizide in combination.

MATERIAL AND METHODS

- Animals:** Albino rats which were 12 weeks old, which were of either sex, which weighed 150-200 grams, were bred locally in central animal house of S.S.I.M.S and R.C, Davanagere, Karnataka, India, and were used in the study. This study was approved by the institutional animal ethical committee of S.S.I.M.S and R.C., Davanagere. The animals were housed in polypropylene cages and they were maintained under standard laboratory conditions at an ambient temperature of 23±2°C, with 12 hour light/12 hour dark cycles. Rats were fed with pellet chow diet and water *ad libitum*.
- Drugs and Chemicals:** Alloxan, dextrose, bromocriptine Mesylate, glipizide and Ether.
- Instrument and other requirements:** A glucometer (ACCU-CHEK ACTIVE) with strips, which was manufactured by- Roche Diagnostics GmbH, D-68298 Mannheim, Germany, Batch No- 91000247 and heparinized micro capillary tubes.

D. Experimental Procedure:

- a. **Induction of Diabetes:** Albino rats of either sex were injected with alloxan in a dose of 150 mg/kg body weight. Alloxan was freshly dissolved in sterile normal saline and it was administered subcutaneously [4, 5]. Animals were treated with 10% dextrose orally, to combat the early phase of hypoglycaemia [6]. After 72 hours of alloxan treatment, the rats which showed blood glucose levels of 350mg/dl and above were included in the study and they were divided into four groups of six animals each.

Group 1 (Control): treated with 0.5ml of distilled water p.o.

Group 2 (Standard): treated with glipizide 2.5mg/kg body wt p.o. [7].

Group 3 (Test): treated with bromocriptine 4.0 mg/kg body wt. p.o. [8].

Group 4 (Sub therapeutic): treated with the sub therapeutic doses of both test (bromocriptine in a dose of 2 mg/kg body wt) and standard (glipizide in a dose of 1.25mg/kg body wt) drugs p.o.

All the four groups were treated respectively, once a day, for a period of 30 days.

- b. **Sample collection and blood glucose estimation:** Blood samples were collected from the retro-orbital plexuses of the rats after induction of mild anaesthesia with ether [9], on 0th, 10th, 20th and 30th days, at intervals of 0th min (before drug administration), 30th min, 1st hr, 2nd hr, 3rd hr, 6th hr, 12th hr

and 24th hour after the drug administration on each of those particular days [10]. Blood sugar level was estimated by using a glucometer.

STATISTICAL ANALYSIS

The results were expressed in Mean \pm SD and they were analyzed by repeated measures ANOVA test. The effects of bromocriptine alone and of its combination with glipizide were compared with the anti-diabetic activity of glipizide.

RESULTS

As per [Table/Fig-1 and 2]:

Group1 which was treated with distilled water served as negative control, wherein there was no marked variation in the blood sugar levels during the study period of 30 days, though slight alterations which lacked statistical significance were observed.

As per [Table/Fig-3 and 4]:

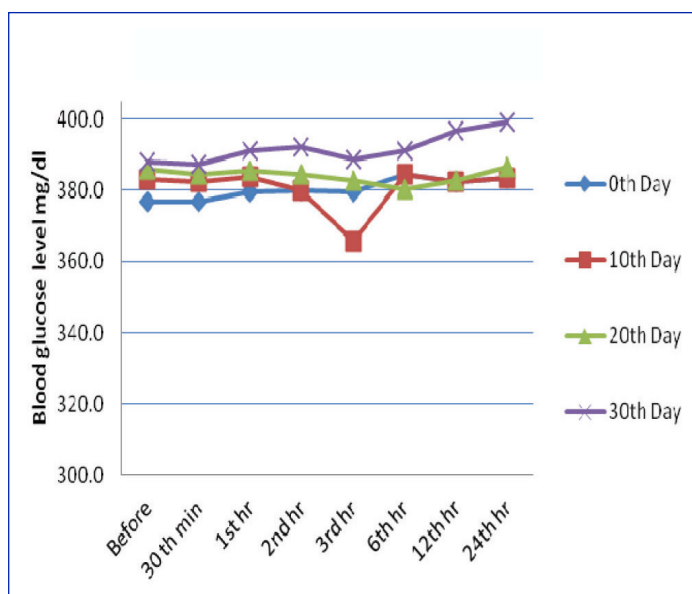
Group 2, a standard group, served as a positive control, which was treated with glipizide 2.5 mg/kg body wt, which showed a gradual reduction in the blood glucose levels in the span of 30 days of treatment. The blood glucose level which was 387.3 mg/dl before the start of experiment decreased up to 154.3 mg/dl at the end of 30th day, which implied a high statistical significance ($p < 0.001$).

As per [Table/Fig-5 and 6]:

Group 3, bromocriptine 4.0 mg/kg body wt treated rats showed a

	0 th minute	30 th minute	1 st hour	2 nd hour	3 rd hour	6 th hour	12 th hour	24 th hour	p* Value, sig
0 th Day	376.8 \pm 15.5	377.0 \pm 21.8	379.5 \pm 18.2	379.8 \pm 21.3	379.7 \pm 27.7	384.5 \pm 19.1	382.5 \pm 18.9	383.5 \pm 14.8	0.84 NS
10 th Day	383.0 \pm 19.6	382.5 \pm 18.4	383.8 \pm 17.3	379.8 \pm 21.3	365.7 \pm 48.0	384.5 \pm 19.1	382.5 \pm 18.9	383.5 \pm 14.8	0.54 NS
20 th Day	385.8 \pm 19.0	384.7 \pm 21.5	385.5 \pm 8.8	384.7 \pm 18.9	382.7 \pm 16.7	380.5 \pm 14.5	382.8 \pm 19.1	386.5 \pm 18.6	0.97 NS
30 th Day	388.2 \pm 14.7	387.2 \pm 15.4	391.2 \pm 10.8	392.2 \pm 18.7	388.7 \pm 18.6	391.3 \pm 18.6	396.7 \pm 20.3	399.2 \pm 17.2	0.41 NS

[Table/Fig-1]: Control Group- Effect of Distilled Water (0.5ml) on Blood Glucose Level (mg/dl) in Alloxanised Hyperglycemic Rats
Values are means \pm SD, *Repeated measures ANOVA test, NS= Non significant.



[Table/Fig-2]: Blood glucose levels seen in control group at fixed time intervals on the days of blood glucose estimation

	0 th minute	30 th minute	1 st hour	2 nd hour	3 rd hour	6 th hour	12 th hour	24 th hour	p* Value, sig
0 th Day	387.3 \pm 11.3	381.7 \pm 9.9	375.5 \pm 7.6	363.7 \pm 6.9	360.5 \pm 11.7	352.0 \pm 9.5	347.3 \pm 9.6	342.7 \pm 11.3	<0.001 HS
10 th Day	337.7 \pm 3.3	335.0 \pm 3.4	330.8 \pm 5.2	321.7 \pm 7.8	317.2 \pm 6.6	311.7 \pm 6.0	310.2 \pm 7.2	304.8 \pm 6.2	<0.001 HS
20 th Day	273.8 \pm 8.3	271.7 \pm 7.8	267.2 \pm 8.3	261.5 \pm 7.4	255.3 \pm 8.5	249.5 \pm 8.7	242.8 \pm 7.1	235.2 \pm 10.3	<0.001 HS
30 th Day	205.5 \pm 8.4	203.3 \pm 8.1	191.3 \pm 12.0	183.2 \pm 11.2	177.3 \pm 7.4	171.0 \pm 6.8	161.5 \pm 8.3	154.3 \pm 7.0	<0.001 HS

[Table/Fig-3]: Standard Group- Effect of Glipizide (2.5 mg/kg body weight) on Blood Glucose Level (mg/dl) in Alloxanised Hyperglycemic Rats.
Values are means \pm SD, *Repeated measures ANOVA test, HS= Highly significant.

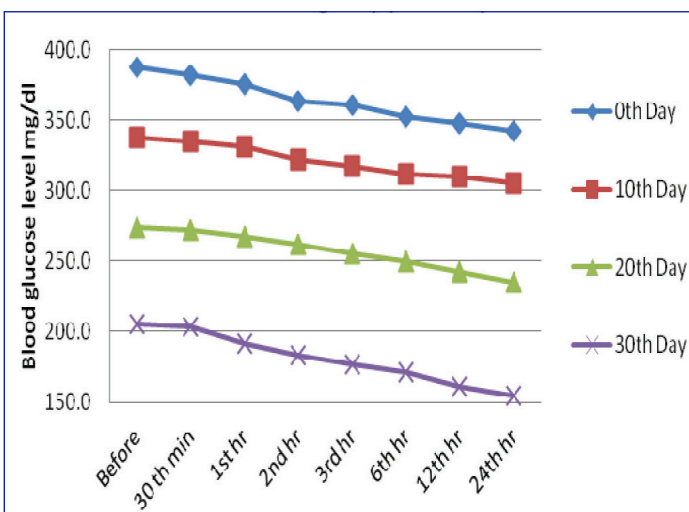
gradual reduction in the blood sugar levels until 6th hour observations on the respective days of blood sugar estimation. There was a marked fall in the blood glucose level from 388.5 mg/dl on 0th day to 254.8 mg/dl on 30th day. The results, though they were statistically highly significant, ($p < 0.001$) were not on par with the results which were obtained in case of Group 2.

As per [Table/Fig-7 and 8]:

Group 4 which was treated with a combination of sub therapeutic doses of bromocriptine 2 mg/kg body wt and glipizide 1.25 mg/kg body wt, showed highly significant statistics in the fall in blood glucose levels ($p < 0.001$). There was a gradual and a sustained reduction in the blood sugar level, which fell from being 385.7 mg/dl on 0th day to 180.2 mg/dl on 30th day. These observations are quiet comparable with the results of glipizide 2.5 mg/kg body wt treated group.

DISCUSSION

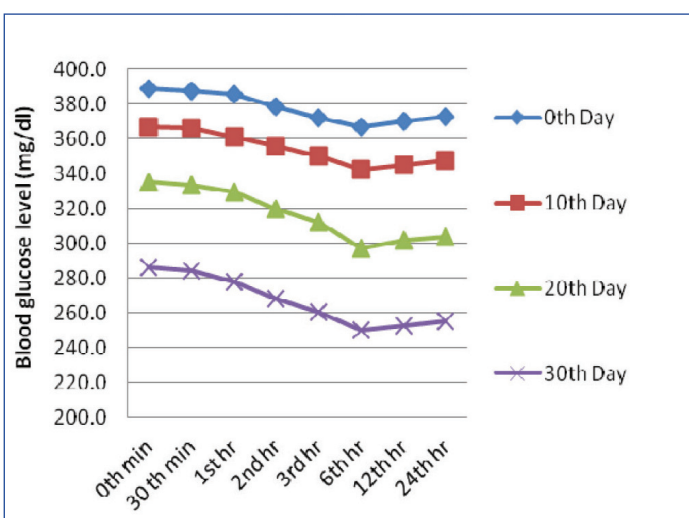
The results indicated that bromocriptine reduced the blood sugar level gradually for a limited period of time and that the reduction would become more prominent on repeated use. The efficacy of bromocriptine alone (4 mg/kg body wt) was not comparable to



[Table/Fig-4]: Blood glucose levels seen in standard group at fixed time intervals on the days of blood glucose estimation

	0 th minute	30 th minute	1 st hour	2 nd hour	3 rd hour	6 th hour	12 th hr	24 th hr	p* Value, sig
0 th Day	388.5±17.3	387.2±15.4	385.5±14.4	378.7±12.2	372.0±12.5	366.8±11.7	370.2±11.4	372.3±7.1	<0.001 HS
10 th Day	366.5±7.7	365.8±8.5	361.2±7.4	355.7±7.3	350.0±11.8	342.0±15.2	344.8±13.5	347.3±13.7	<0.001 HS
20 th Day	334.8±9.8	333.3±10.0	329.5±9.2	319.5±8.8	312.2±9.8	297.3±4.9	301.3±2.3	303.8±3.3	<0.001 HS
30 th Day	285.8±7.6	284.3±7.1	277.8±4.6	268.2±4.4	260.3±4.5	249.7±3.9	252.7±4.3	254.8±4.7	<0.001 HS

[Table/Fig-5]: Test Group- Effect Of Bromocriptine (4 mg/kg body weight) On Blood Glucose Level (Mg/dl) In Alloxanised Hyperglycemic Rats. Values are means ± SD, *Repeated measures ANOVA test, HS= Highly significant.



[Table/Fig-6]: Blood glucose levels seen in test group at fixed time intervals on the days of blood glucose estimation

	0 th minute	30 th minute	1 st hour	2 nd hour	3 rd hour	6 th hour	12 th hour	24 th hour	p* Value, sig
0 th Day	385.7±13.7	383.0±13.3	380.3±13.3	372.2±16.7	365.8±15.3	360.7±15.0	356.0±17.7	353.8±15.7	<0.001 HS
10 th Day	346.7±15.3	345.0±15.8	339.8±15.5	331.2±14.1	326.0±10.7	319.7±12.3	317.8±10.7	314.0±9.8	<0.001 HS
20 th Day	305.0±9.2	303.3±9.7	297.0±9.8	288.7±10.1	277.8±9.9	265.3±10.0	258.8±7.6	253.3±7.4	<0.001 HS
30 th Day	236.0±7.1	234.8±7.5	227.3±8.6	219.2±9.7	208.3±13.6	196.5±11.5	188.8±11.2	180.2±11.0	<0.001 HS

[Table/Fig-7]: Sub Therapeutic Group- Combination Effect Of Bromocriptine (2 mg/kg body weight) and Glipizide (1.25 mg/kg body weight) on Blood Glucose (mg/dl) In Alloxanised Hyperglycemic Rats. Values are means ± SD, *Repeated measures ANOVA test, HS= Highly significant.

that of the standard drug glipizide (2.5 mg/kg body wt), but the combination of sub-therapeutic doses of Glipizide 1.25 mg/kg body wt and bromocriptine 2 mg/kg body wt produced an additive effect which was definitely comparable to therapeutic dose of glipizide. Another point which had to be noted was that there was no evidence of any drastic increase in blood sugar levels at any point

of time during the experimentation, which indicated their persistent anti-hyperglycaemic effects.

Bromocriptine is unique in that it does not have a specific receptor that mediates its action on glucose and lipid metabolism. Rather, its effects are mediated via resetting of dopaminergic and sympathetic tones within the CNS [11]. There is a large unmet need for new therapies for treating type 2 DM, which reduces fasting and postprandial glucose without increasing insulin levels and which are not associated with weight gain or hypoglycaemia. The quick release formulation of bromocriptine (Cycloset) represents such a therapy [12]. It can thus be specifically indicated as an adjunct to diet and exercise for improving glycaemic control. Type 2 diabetic patients are at a high risk for atherosclerotic CVS complications. There have been reports which have shown beneficial effects of bromocriptine usage in hypertension [13], obesity [14] and dyslipidaemia [15], which in-turn were cause and effect of diabetes. Therefore, bromocriptine can be counted as an anti-diabetic agent that not only improves glycaemia but also provides overall safety in

cardiovascular outcomes [16].

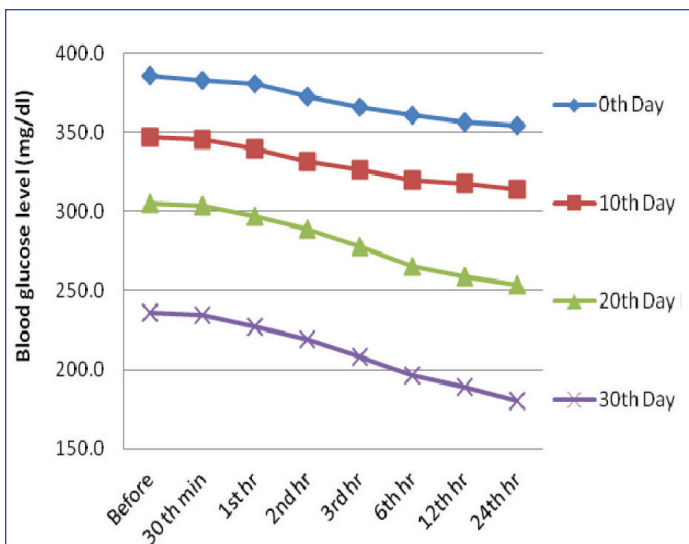
The mechanism of action of this agent is unclear; however, its activity as a dopamine D₂ receptor agonist seems to provide the primary mechanism for utility in resetting the Circadian rhythm in patients with type 2 DM. Other mechanisms which include an α-1 antagonist, an α-2 agonist and serotonin and prolactin modulators, may also help in explaining bromocriptine's glucose-lowering effects [17]. The observations of our study showed a definite anti-hyperglycaemic effect with Bromocriptine.

Bromocriptine is known to be associated with nasal stuffiness, nausea, headache, constrictive pericarditis, neuroleptic malignant syndrome and hypotension [18] as various side effects in humans.

Owing to its proposed usage in sub-therapeutic doses due to its anti-diabetic effect, it is thought to produce lesser side effects relatively. However, long term follow ups are required. Further evaluator studies are required to strengthen its safety profile, before implying its wider usage in humans.

Bromocriptine is one of the important drugs which are used in

Parkinsonism, hyperprolactinaemia and acromegaly [19], and it is also effective in inducing ovulation [20]. From this study, we can focus on its possible synergistic anti-hyperglycaemic effect with other established anti-diabetic agents like glipizide, in doses which are below normal therapeutic range.



[Table/Fig-8]: Blood glucose levels seen in sub therapeutic group at fixed time intervals on the days of blood glucose estimation

CONCLUSION

Bromocriptine produces a considerable reduction in the blood glucose but the response with sub-therapeutic doses of combination of bromocriptine and glipizide is quite encouraging. This may reduce the need of full therapeutic doses of individual drugs, thereby reducing the adverse effects and cost of medication. Further clinical trials are required to confirm the above observations. If this is proved beyond doubt, then bromocriptine may become an additional boon for diabetic patients.

REFERENCES

- [1] Rajiv Mahajan. Bromocriptine Mesylate: FDA- approved novel treatment for type-2 diabetes. *Indian J Pharmacol*. 2009 August; 41(4): 197-98.
- [2] Beth A Musil, Pharm D, CDE, Denise L Walbrandt Pigarelli, PharmD, BC-ADM. New Drugs for Glycemic Control in Type 2 Diabetes Mellitus. Recently-approved and pipeline drugs for treatment of type 2 diabetes. *JPSW*. 2010 Sept/Oct; 18.
- [3] Petra Kok, Ferdinand Roelfsema, Marijke Frollich, Johannes van Pelt, Marcel P M Stokkel, A Edo Meinders, Hanno Pijl. Activation of dopamine D2 receptors simultaneously ameliorates various metabolic features of obese women. *Am J Physiol Endocrinol Metab*. 2006 June; 291:E1038-E43.

- [4] H Gerhard Vogel, Wolfgang H Vogel, Bernward A Scholken, Jürgen Sandow Gunter Müller, Wolfgang F Vogel. *Drug Discovery and Evaluation Pharmacological Assays*. Springer-Verlag Berlin Heidelberg, 2nd Edition. 2002; 950.
- [5] Gupta SK. *Drug Screening Methods*. Jaypee publication. 1st edition; 2004; 307.
- [6] A Mishra, R Kumari, PN Murthy, PP Dash. Influence of Atorvastatin on the pharmacodynamics of Glipizide in normal and diabetic rats. *Der Pharma Chemica* 2010; 2 (2): 101-04.
- [7] Dolly Jaiswal, Prashant Kumar Rai, Geeta Watal. Antidiabetic effect of withania coagulans in experimental rats. *Indian Journal of Clinical Biochemistry* 2009; 24 (1): 88-93.
- [8] A Ribeiro-de-Oliveira Jr, RM Guerra, RB Foscolo, U Marubayashi, AM Reis, CC Coimbra. Effects of chronic bromocriptine (CB-154) treatment on the plasma glucose and insulin secretion response to neurocytotoxicity in rats. *J Endocrinol*. 1999 Aug; 162 (2):237-42.
- [9] Gosh M N. *Fundamentals of Experimental Pharmacology*, Hilton and Company, 3rd edition; 2005; 15.
- [10] Harish Kumar VS, Sindhu NR, Rajashri S Patil, Umakant Patil. Anti-hyperglycemic activity of simvastatin alone (therapeutic dose) and combination of simvastatin and glipizide (sub therapeutic doses) on alloxan induced hyperglycemia in albino rats. *Int J Pharm Sci Res*. 2012; 3(11):4398-403.
- [11] Ralph A De Fronzo. Bromocriptine: A Sympatholytic, D2-Dopamine Agonist for the Treatment of Type 2 Diabetes. *Diabetes Care*, 2011 April;34(4):789-94.
- [12] Scranton R, Cincotta A. Bromocriptine—unique formulation of a dopamine agonist for the treatment of type 2 diabetes. *Expert Opin Pharmacother*. 2010 Feb; 11(2):269-79.
- [13] Masaharu Ito, Kohei Matsuura, Akira Aiko, Kazuo Matsui, Toshihiro Yoshimura, Hitoshi Okamura. Successful Treatment with Bromocriptine of Hypertension Associated with Polycystic Ovarian Disease. *Acta Obstetrica et Gynecologica Scandinavica*, 1987; 66(3): 279-82.
- [14] Anthony H Cincotta, Albert H Meier. Bromocriptine (Ergoset) Reduces Body Weight and Improves Glucose Tolerance in Obese Subjects. *Diabetes Care*, 1996 June;19 (6): 667-70.
- [15] Zhang Y, Scislowski PW, Prevelige R, Phaneuf S, Cincotta AH. Bromocriptine/SKF38393 treatment ameliorates dyslipidemia in ob/ob mice. *Metabolism*, 1999 Aug;48(8):1033-40.
- [16] J Michael gaziano, Anthony H Cincotta, Christopher M. Oconnor, Michael Ezrokhi, Dean Ruttly, Z J Ma, Richard E Scranton. Randomized Clinical Trial of Quick-Release Bromocriptine Among Patients With Type 2 Diabetes on Overall Safety and Cardiovascular Outcomes. *Diabetes Care*, 2010; 33:1503-08.
- [17] Kerr JL, Timpe EM, Petkewicz KA. Bromocriptine mesylate for glycemic management in type2 Diabetes Mellitus. *Ann Pharmacother*, 2010 Nov; 44(11): 1777-85.
- [18] Joseph L Evans, Robert J Rushakoff. Oral Pharmacological Agents for Type 2 Diabetes. *ENDOTEXT*; 2010 December.
- [19] Brunton LL, Lazo JS, Parker KL, Eds., Goodman and Gilman's The Pharmacological Basis of Therapeutics, 11th edition, Mc Graw Hill Publications, New York, USA, 2005;1500.
- [20] H J van der Steeg, H J T Coelingh Bennink. Bromocriptine for induction of ovulation in normoprolactinaemic post-pill anovulation. *The Lancet*, 1977 March 5; 309(8010):502-04.

PARTICULARS OF CONTRIBUTORS:

1. Assistant Professor, Department of Pharmacology, S S Institute of Medical Sciences & Research Centre Davanagere, Karnataka, India.
2. Phase III MBBS Student, Department of Pharmacology, S S Institute of Medical Sciences & Research Centre Davanagere, Karnataka, India.
3. Assistant Professor, Department of Pharmacology, S S Institute of Medical Sciences & Research Centre Davanagere, Karnataka, India.
4. Associate Professor, Department of Pharmacology, S S Institute of Medical Sciences & Research Centre Davanagere, Karnataka, India.
5. Phase III MBBS Student, Department of Pharmacology, S S Institute of Medical Sciences & Research Centre Davanagere, Karnataka, India.
6. Professor & HOD, Department of Pharmacology, S S Institute of Medical Sciences & Research Centre Davanagere, Karnataka, India.

NAME, ADDRESS, E-MAIL ID OF THE CORRESPONDING AUTHOR:

Mr. Harish Kumar V S,
Assistant Professor, Department of Pharmacology, SSIMS & RC, NH-4, Davanagere, Karnataka, India.
E-mail: harishkvspharma@gmail.com

FINANCIAL OR OTHER COMPETING INTERESTS: None.

Date of Submission: **Feb 05, 2013**
Date of Peer Review: **May 09, 2013**
Date of Acceptance: **Jun 03, 2013**
Date of Publishing: **Sept 10, 2013**