



Published in final edited form as:

Chemosphere. 2013 November ; 93(9): . doi:10.1016/j.chemosphere.2013.06.087.

Effective Synthesis of Sulfate Metabolites of Chlorinated Phenols

Hans-Joachim Lehmler^{a,*}, Xianran He^a, Xueshu Li^a, Michael W. Duffel^b, and Sean Parkin^c

^aDepartment of Occupational and Environmental Health, College of Public Health, The University of Iowa, Iowa City, IA 52242, USA

^bDepartment of Pharmaceutical Sciences and Experimental Therapeutics, College of Pharmacy, The University of Iowa, Iowa City, IA 52242

^cDepartment of Chemistry, University of Kentucky, Lexington, KY 40506, USA

Abstract

Chlorophenols are an important class of persistent environmental contaminants and have been implicated in a range of adverse health effects, including cancer. They are readily conjugated and excreted as the corresponding glucuronides and sulfates in the urine of humans and other species. Here we report the synthesis and characterization of a series of ten chlorophenol sulfates by sulfation of the corresponding chlorophenols with 2,2,2-trichloroethyl (TCE) chlorosulfate using *N,N*-dimethylaminopyridine (DMAP) as base. Deprotection of the chlorophenol diesters with zinc powder/ammonium formate yielded the respective chlorophenol sulfate ammonium salts in good yield. The molecular structure of three TCE-protected chlorophenol sulfate diesters and one chlorophenol sulfate monoester were confirmed by X-ray crystal structure analysis. The chlorophenol sulfates were stable for several months if stored at -20°C and, thus, are useful for future toxicological, environmental and human biomonitoring studies.

Keywords

Chlorophenol; pentachlorophenol; sulfates; metabolites; X-ray crystal structure

1. Introduction

Chlorophenols are a group of ubiquitous, persistent environmental contaminants and are used in industrial applications ranging from pesticides to synthetic intermediates (ATSDR, 1999; Jensen, 1996; Olaniran and Igbinosa, 2011). For example, pentachlorophenol (PCP) has been used worldwide as pesticide, antiseptic, and wood preservative (Czaplicka, 2004; Simpson and Sefton, 2007). Although PCP's use was restricted in the United States after 1992 (Nistor and Emneus, 2003), it is still manufactured in some countries, e.g. Mexico and China (Trevino-Quintanilla et al., 2011). Chlorophenols are also inadvertently formed during anthropogenic processes, such as the combustion of organic matter, chlorination of

© 2013 Elsevier Ltd. All rights reserved.

*Corresponding author: Hans-Joachim Lehmler, The University of Iowa, Department of Occupational and Environmental Health, UI Research Park, 221 IREH, Iowa City, IA 52242-5000, Phone: 1(319) 335-4310, Fax: 1(319) 335-4290, hans-joachim-lehmler@uiowa.edu.

Publisher's Disclaimer: This is a PDF file of an unedited manuscript that has been accepted for publication. As a service to our customers we are providing this early version of the manuscript. The manuscript will undergo copyediting, typesetting, and review of the resulting proof before it is published in its final citable form. Please note that during the production process errors may be discovered which could affect the content, and all legal disclaimers that apply to the journal pertain.

drinking water and paper production (Czaplicka, 2004; Olaniran and Igbinsosa, 2011). Furthermore, mammals can metabolize dichlorobenzenes (Hawkins et al., 1980; Hissink et al., 1997; Hissink et al., 1996; Klos and Dekant, 1994) or other chlorinated compounds, such as lindane (Chadwick et al., 1981), to chlorophenols. Chlorophenols have been classified as group 2B carcinogens “possibly carcinogenic to humans” by the International Agency for Research on Cancer (IARC) and can cause liver and kidney toxicities. Several chlorophenols, including PCP, are listed on the Priority Pollutant List of the United States Environmental Protection Agency (US EPA Website).

However, there is considerable evidence that sulfates and glucuronides are important biotransformation products of chlorophenols and other chlorinated environmental pollutants in many species, including fish (Cravedi et al., 1999; Layiwola et al., 1983; Oikari and Anas, 1985; Stehly and Hayton, 1989), rats (Chadwick et al., 1981; Hawkins et al., 1980; Hissink et al., 1997; Hissink et al., 1996; Klos and Dekant, 1994; Pascal-Lorber et al., 2012) and humans (Pekari et al., 1991; Renner and Mucke, 1986; Ye et al., 2005). Particularly noteworthy is an investigation of saw-mill workers exposed to chlorophenols, which suggests that sulfation is a dominant urinary excretion pathway for low concentrations of chlorophenols (Pekari et al., 1991). In agreement with these earlier studies, Gulcan et al. recently demonstrated that PCP and other chlorophenols are substrates for human hydroxysteroid sulfotransferase hSULT2A1 (Gulcan et al., 2008). There is also evidence that structurally related phenols, such as brominated phenols (Ho et al., 2012) and certain hydroxylated polychlorinated biphenyls (Liu et al., 2006), are substrates for sulfotransferases.

Although sulfate monoesters are important metabolites of chlorophenols and other phenolic pollutants, their toxicity and occurrence in environmental and human samples are poorly investigated, partly because pure sulfate monoesters are not available from commercial sources. To overcome this gap in our knowledge, we herein report the synthesis and characterization of a series of ten chlorophenol sulfate monoesters. These well characterized and highly pure compounds are now available for toxicological, environmental and human biomonitoring studies.

2. Materials and methods

2.1. General

All chlorophenol sulfate monoesters were characterized by ^1H nuclear magnetic resonance (NMR), ^{13}C NMR and mass spectrometry. The NMR spectra were recorded on Bruker DRX 400 Digital NMR spectrometer. All ^1H and ^{13}C chemical shifts are reported in parts per million (ppm) relative to tetramethylsilane as internal standard. Gas chromatography-mass spectrometry (GC-MS) was carried out using an Agilent 6890N GC with an Agilent 5975inert detector. Accurate mass determinations of all chlorophenol sulfates were obtained from the High Resolution Mass Spectrometry Facility of the University of California, Riverside (CA, USA). Elemental analyses were performed by Atlantic Microlab (Atlanta, GA, USA). Ultraviolet-visible (UV/Vis) spectra were measured using a Perkin Elmer Lambda 650 UV/Vis spectrometer at 23 °C. Melting points (mp) were determined using a MelTemp apparatus and are uncorrected. The chlorophenols **1a-i** were obtained from Fisher Scientific (Fairlawn, NJ, USA) or Sigma-Aldrich (St. Louis, MO, USA) and used without further purification. 2,2,2-Trichloroethyl chlorosulfate was synthesized according to a published procedure (Hedayatu et al., 1971). Sulfuric acid, 4-bromo-2-chloro-phenyl ester 2,2,2-trichloroethyl ester (**2j**) was obtained as described previously (Li et al., 2010d).

2.2. General procedure for the synthesis of trichloroethyl esters 2a-i

A solution of chlorosulfuric acid 2,2,2-trichloroethyl ester (1.0 equiv) in dry tetrahydrofuran (THF) (10 mL) was added drop wise over a period of 15 minutes to a solution of phenol **1a-i** (500 mg), triethylamine (1.2 equiv) and DMAP (1.0 equiv) in dry THF (20 mL) (Li et al., 2010d; Liu et al., 2004). The solution was stirred for 2 h at room temperature, ethyl acetate (100 mL) was added and the solution washed with H₂O (40 mL), 1.0 N HCl (2 × 40 mL), H₂O (40 mL) and saturated brine (40 mL). The organic layer was dried with Na₂SO₄ and the solvent was removed under reduced pressure. The residue was purified by column chromatography on silica gel using hexane-ethyl acetate (10:1) as eluent to yield the trichloroethyl esters **2a-i** in 43-83% yield.

2.2.1. Sulfuric acid 2-chlorophenyl 2,2,2-trichloroethyl ester (2a)—Yield: 42 %; white solid; mp: 32-33 °C; ¹H NMR (400 MHz, CDCl₃): /ppm 4.93 (s, 2H, CH₂), 7.27-7.36 (m, 2H), 7.48-7.54 (m, 2H). ¹³C NMR (100 MHz, CDCl₃): /ppm 80.8, 92.4, 123.1, 126.8, 128.5, 129.0, 131.4, 146.1. EI-MS *m/z* (relative intensity, %): 338 (9, C₈H₆Cl₄O₄S⁺), 141 (12), 128 (100), 99 (76), 73 (25), 63 (19). Anal. Calcd. for C₈H₆Cl₄O₄S: C 28.26, H 1.78, S 9.43. Found: C 28.19, H 1.65, S 9.18.

2.2.2. Sulfuric acid 3-chlorophenyl 2,2,2-trichloroethyl ester (2b)—Yield: 87%; white solid; mp: 31-32 °C; ¹H NMR (400 MHz, CDCl₃): /ppm 4.82 (s, 2H, CH₂), 7.25-7.27 (m, 1H), 7.32-7.39 (m, 3H). ¹³C NMR (100 MHz, CDCl₃): /ppm 80.7, 92.4, 119.6, 122.1, 128.5, 131.1, 135.7, 150.3. EI-MS *m/z* (relative intensity, %): 338 (21, C₈H₆Cl₄O₄S⁺), 267 (15), 221 (10), 208 (21), 141 (16), 128 (100), 99 (53), 73 (11), 63 (22). Anal. Calcd. for C₈H₆Cl₄O₄S: C 28.26, H 1.78, S 9.43. Found: C 28.00, H 1.72, S 9.29.

2.2.3. Sulfuric acid 4-chlorophenyl 2,2,2-trichloroethyl ester (2c) (Liu et al., 2004)—Yield: 67 %; white solid; mp: 28-29 °C (lit. mp: 27-28 °C (Liu et al., 2004)); ¹H NMR (400 MHz, CDCl₃): /ppm 4.81 (s, 2H, CH₂), 7.28 (dd, 2H, AA XX system), 7.39 (dd, 2H, AA XX system). ¹³C NMR (100 MHz, CDCl₃): /ppm 80.7, 92.4, 122.8, 130.5, 133.9, 148.6. EI-MS *m/z* (relative intensity, %): 338 (6, C₈H₆Cl₄O₄S⁺), 208 (13), 128 (100), 99 (57), 73 (18), 63 (16). Anal. Calcd. for C₈H₆Cl₄O₄S: C 28.26, H 1.78, S 9.43. Found: C 27.96, H 1.66, S 9.14.

2.2.4. Sulfuric acid 2,4-dichlorophenyl 2,2,2-trichloroethyl ester (2d)—Yield: 73 %; white solid; mp: 55-57 °C; ¹H NMR (400 MHz, CDCl₃): /ppm 4.92 (s, 2H, CH₂), 7.29 (dd, 1H, *J* = 2. Hz, *J* = 8.8 Hz), 7.47 (d, 1H, *J* = 2.4 Hz), 7.59 (d, 1H, *J* = 8.8 Hz). ¹³C NMR (100 MHz, CDCl₃): /ppm 81.0, 92.3, 124.0, 127.9, 128.7, 131.1, 132.0, 144.7. EI-MS *m/z* (relative intensity, %): 372 (10, C₈H₅Cl₅O₄S⁺), 162 (100), 133 (67), 63 (22). Anal. Calcd. for C₈H₅Cl₅O₄S: C 25.66, H 1.35, S 8.56. Found: C 25.93, H 1.32, S 8.38.

2.2.5. Sulfuric acid 2,5-dichlorophenyl 2,2,2-trichloroethyl ester (2e)—Yield: 79 %; white solid; mp: 36-38 °C; ¹H NMR (400 MHz, CDCl₃): /ppm 4.93 (s, 2H, CH₂), 7.27 (dd, 1H, *J* = 2.0 Hz, *J* = 8.8 Hz), 7.42 (d, 1H, *J* = 8.8 Hz), 7.55 (d, 1H, *J* = 2.0 Hz). ¹³C NMR (100 MHz, CDCl₃): /ppm 81.0, 92.3, 123.7, 125.5, 129.3, 131.8, 133.8, 146.1. EI-MS *m/z* (relative intensity, %): 372 (10, C₈H₅Cl₅O₄S⁺), 162 (100), 133 (67), 95 (12), 73 (14), 63 (22). Anal. Calcd. for C₈H₅Cl₅O₄S: C 25.66, H 1.35, S 8.56. Found: C 25.81, H 1.23, S 8.57.

2.2.6. Sulfuric acid 2,6-dichlorophenyl 2,2,2-trichloroethyl ester (2f)—Yield: 83 %; colorless oil; ¹H NMR (400 MHz, CDCl₃): /ppm 5.03 (s, 2H, CH₂), 7.26 (pseudo t, 1H, *J* ~ 8.4 Hz), 7.40 (d, 2H, *J* = 8.4 Hz). ¹³C NMR (100 MHz, CDCl₃): /ppm 81.0, 92.5, 129.1, 129.8, 143.7. EI-MS *m/z* (relative intensity, %): 372 (12, C₈H₅Cl₅O₄S⁺), 162 (100), 133

(96), 97 (14), 73 (19), 63 (28). Anal. Calcd. for $C_8H_5Cl_5O_4S$: C 25.66, H 1.35, S 8.56. Found: C 25.66, H 1.23, S 8.31.

2.2.7. Sulfuric acid 2,4,6-trichlorophenyl 2,2,2-trichloroethyl ester (2g)—Yield: 56 %; white solid; mp: 81-82 °C; 1H NMR (400 MHz, $CDCl_3$): δ 5.01 (s, 2H, CH_2), 7.42 (s, 2H). ^{13}C NMR (100 MHz, $CDCl_3$): δ 81.2, 92.4, 129.7, 130.5, 134.3, 142.6. EI-MS m/z (relative intensity, %): 406 (12, $C_8H_4Cl_6O_4S^{+}$), 196 (100), 167 (54), 133 (22), 97 (53), 62 (19). Anal. Calcd. for $C_8H_4Cl_6O_4S$: C 23.50, H 0.99, S 7.84. Found: C 23.70, H 0.84, S 7.90.

2.2.8. Sulfuric acid 2,4,5-trichlorophenyl 2,2,2-trichloroethyl ester (2h)—Yield: 72%; colorless oil; 1H NMR (400 MHz, $CDCl_3$): δ 4.93 (s, 2H, CH_2), 7.61 (s, 1H), 7.65 (s, 1H). ^{13}C NMR (100 MHz, $CDCl_3$): δ 81.1, 92.2, 124.8, 126.1, 132.0, 132.4, 133.0, 144.4. EI-MS m/z (relative intensity, %): 406 (10, $C_8H_4Cl_6O_4S^{+}$), 198 (100), 167 (58), 131 (27), 97 (35), 61 (18). Anal. Calcd. for $C_8H_4Cl_6O_4S$: C 23.50, H 0.99, S 7.84. Found: C 23.26, H 0.83, S 7.89.

2.2.9. Sulfuric acid 2,3,4,5,6-pentachlorophenyl 2,2,2-trichloroethyl ester (2i)—Yield: 43 %; white solid; mp: 138-139 °C; 1H NMR (400 MHz, $CDCl_3$): δ 5.03 (s, 2H, CH_2). ^{13}C NMR (100 MHz, $CDCl_3$): δ 81.3, 92.2, 128.6, 133.0, 133.9, 143.5. EI-MS m/z (relative intensity, %): 475 (19, $C_8H_2Cl_8O_4S^{+}$), 266 (75), 237 (100), 165 (37), 141 (22), 132 (35), 117 (20), 97 (20). Anal. Calcd. for $C_8H_2Cl_8O_4S$: C 20.11, H 0.42, S 6.71. Found: C 20.17, H 0.36, S 6.67.

2.3. General procedure for the synthesis of chlorophenol sulfates 3a-j

Ammonium formate (0.77 g, 12 mmol) was added to a solution of the TCE-protected chlorophenol sulfate diesters **2a-j** (2mmol) in methanol (5 mL) (Li et al., 2010d; Liu et al., 2004). Zinc dust (0.26 g, 4 mmol) was added after the ammonium formate had dissolved completely and the reaction mixture was stirred until the TCE ester **2a-j** was completely consumed, as determined by thin layer chromatography. The solution was filtered through Celite and concentrated under reduced pressure at temperatures below 35 °C to minimize the decomposition of **3a-j**. The product was purified by column chromatography on silica gel using a mixture of dichloromethane, methanol and ammonium hydroxide (15:3:0.5, v/v) as eluent. The solvent was removed under reduced pressure at temperature below 35 °C to yield **3a-j**. The R_f values of all chlorophenol sulfate monoesters **3a-j** were approximately $R_f = 0.3$ ($CH_2Cl_2:CH_3OH:NH_4OH = 15:3:0.3$, $v/v/v$).

2.3.1. 2-Chlorophenylsulfate, ammonium salt (3a)—Yield: 78 %; white solid; mp: 122 °C (dec); 1H NMR (400 MHz, CD_3OD): δ 7.11-7.15 (m, 1H), 7.25-7.29 (m, 1H), 7.40-7.42 (m, 1H), 7.60-7.62 (m, 1H). ^{13}C NMR (100 MHz, CD_3OD): δ 124.0, 126.8, 127.8, 128.7, 131.3, 150.1. UV/Vis: $\lambda_{max}(MeOH) = 270$ nm, $\epsilon_{3a} = 0.94 \times 10^4$ $L \cdot mol^{-1} \cdot cm^{-1}$ ($\lambda_{max}(MeOH) = 280$ nm, $\epsilon_{2a} = 0.21 \times 10^4$ $L \cdot mol^{-1} \cdot cm^{-1}$). HRMS (ESI, negative): $[M-NH_4]^-$ found m/z 206.9528, calculated for $C_6H_4ClO_4S$ 206.9524.

2.3.2. 3-Chlorophenylsulfate, ammonium salt (3b)—Yield: 73 %; white solid; mp: 178 °C (dec); 1H NMR (400 MHz, CD_3OD): δ 7.15-7.23 (m, 2H), 7.29- 7.36 (m, 2H). ^{13}C NMR (100 MHz, CD_3OD): δ 121.0, 122.8, 125.9, 131.3, 135.4, 155.0. UV/Vis: $\lambda_{max}(MeOH) = 270$ nm, $\epsilon_{3b} = 1.32 \times 10^4$ $L \cdot mol^{-1} \cdot cm^{-1}$ ($\lambda_{max}(MeOH) = 280$ nm, $\epsilon_{2b} = 0.20 \times 10^4$ $L \cdot mol^{-1} \cdot cm^{-1}$). HRMS (ESI, negative): $[M-NH_4]^-$ found m/z 206.9529, calculated for $C_6H_4ClO_4S$ 206.9524.

2.3.3. 4-Chlorophenylsulfate, ammonium salt (3c) (Liu et al., 2004)—Yield: 94 %; white solid; mp: 95 °C (dec); ^1H NMR (400 MHz, CD_3OD): δ 7.26-7.34 (m, 4H). ^{13}C NMR (100 MHz, CD_3OD): δ 124.2, 130.3, 131.2, 152.7. UV/Vis: $\lambda_{\text{max}}(\text{MeOH}) = 270$ nm, $\epsilon = 1.16 \times 10^4$ $\text{L}\cdot\text{mol}^{-1}\cdot\text{cm}^{-1}$ ($\lambda_{\text{max}}(\text{MeOH}) = 280$ nm, $\epsilon = 0.17 \times 10^4$ $\text{L}\cdot\text{mol}^{-1}\cdot\text{cm}^{-1}$). HRMS (ESI, negative): $[\text{M-NH}_4]^-$ found m/z 206.9531, calculated for $\text{C}_6\text{H}_4\text{ClO}_4\text{S}$ 206.9524.

2.3.4. 2,4-Dichlorophenylsulfate, ammonium salt (3d)—Yield: 97 %; white solid; mp: 175 °C (dec); ^1H NMR (400 MHz, CD_3OD): δ 7.29 (dd, 1H, $J = 8.8$ Hz, $J = 2.5$ Hz), 7.47 (d, 1H, $J = 2.5$ Hz), 7.58 (d, 1H, $J = 8.8$ Hz). ^{13}C NMR (100 MHz, CD_3OD): δ 125.0, 128.79, 128.84, 130.9, 131.2, 149.2. UV/Vis: $\lambda_{\text{max}}(\text{MeOH}) = 270$ nm, $\epsilon = 1.01 \times 10^4$ $\text{L}\cdot\text{mol}^{-1}\cdot\text{cm}^{-1}$ ($\lambda_{\text{max}}(\text{MeOH}) = 290$ nm, $\epsilon = 0.24 \times 10^4$ $\text{L}\cdot\text{mol}^{-1}\cdot\text{cm}^{-1}$). HRMS (ESI, negative): $[\text{M-NH}_4]^-$ found m/z 240.9128, calculated for $\text{C}_6\text{H}_3\text{Cl}_2\text{O}_4\text{S}$ 240.9135.

2.3.5. 2,5-Dichlorophenylsulfate, ammonium salt (3e)—Yield: 69 %; white solid; mp: 110 °C (dec); ^1H NMR (400 MHz, CD_3OD): δ 7.13 (dd, 1H, $J = 8.6$ Hz, $J = 2.5$ Hz), 7.38 (d, 1H, $J = 8.6$ Hz), 7.66 (d, $J = 2.5$ Hz). ^{13}C NMR (100 MHz, CD_3OD): δ 123.8, 126.3, 126.4, 132.1, 133.7, 150.8. UV/Vis: $\lambda_{\text{max}}(\text{MeOH}) = 270$ nm, $\epsilon = 0.99 \times 10^4$ $\text{L}\cdot\text{mol}^{-1}\cdot\text{cm}^{-1}$ ($\lambda_{\text{max}}(\text{MeOH}) = 280$ nm, $\epsilon = 0.39 \times 10^4$ $\text{L}\cdot\text{mol}^{-1}\cdot\text{cm}^{-1}$). HRMS (ESI, negative): $[\text{M-NH}_4]^-$ found m/z 240.9135, calculated for $\text{C}_6\text{H}_3\text{Cl}_2\text{O}_4\text{S}$ 240.9135.

2.3.6. 2,6-Dichlorophenylsulfate, ammonium salt (3f)—Yield: 81 %; white solid; mp: 160 °C (dec); ^1H NMR (400 MHz, CD_3OD): δ 6.80 (pseudo t, 1H, $J \sim 8.0$ Hz), 7.24-7.27 (m, 2H). ^{13}C NMR (100 MHz, CD_3OD): δ 126.0, 128.7, 130.3, 145.8. UV/Vis: $\lambda_{\text{max}}(\text{MeOH}) = 270$ nm, $\epsilon = 1.38 \times 10^4$ $\text{L}\cdot\text{mol}^{-1}\cdot\text{cm}^{-1}$ ($\lambda_{\text{max}}(\text{MeOH}) = 280$ nm, $\epsilon = 0.15 \times 10^4$ $\text{L}\cdot\text{mol}^{-1}\cdot\text{cm}^{-1}$). HRMS (ESI, negative): $[\text{M-NH}_4]^-$ found m/z 240.9138, calculated for $\text{C}_6\text{H}_3\text{Cl}_2\text{O}_4\text{S}$ 240.9135.

2.3.7. 2,4,6-Trichlorophenylsulfate, ammonium salt (3g)—Yield: 67%; white solid; mp: 170 °C (dec); ^1H NMR (400 MHz, CD_3OD): δ 7.46 (s, 2H). ^{13}C NMR (100 MHz, CD_3OD): δ 129.9, 131.7, 132.6, 146.6. UV/Vis: $\lambda_{\text{max}}(\text{MeOH}) = 270$ nm, $\epsilon = 1.06 \times 10^4$ $\text{L}\cdot\text{mol}^{-1}\cdot\text{cm}^{-1}$ ($\lambda_{\text{max}}(\text{MeOH}) = 290$ nm, $\epsilon = 0.26 \times 10^4$ $\text{L}\cdot\text{mol}^{-1}\cdot\text{cm}^{-1}$). HRMS (ESI, negative): $[\text{M-NH}_4]^-$ found m/z 274.8742, calculated for $\text{C}_6\text{H}_2\text{Cl}_3\text{O}_4\text{S}$ 240.8745.

2.3.8. 2,4,5-Trichlorophenylsulfate, ammonium salt (3h)—Yield: 88 %; white solid; mp: 155 °C (dec); ^1H NMR (400 MHz, CD_3OD): δ 7.63 (s, 1H), 7.79 (s, 1H). ^{13}C NMR (100 MHz, CD_3OD): δ 125.0, 127.2, 129.2, 131.95, 131.99, 149.6. UV/Vis: $\lambda_{\text{max}}(\text{MeOH}) = 270$ nm, $\epsilon = 1.47 \times 10^4$ $\text{L}\cdot\text{mol}^{-1}\cdot\text{cm}^{-1}$ ($\lambda_{\text{max}}(\text{MeOH}) = 290$ nm, $\epsilon = 0.11 \times 10^4$ $\text{L}\cdot\text{mol}^{-1}\cdot\text{cm}^{-1}$). HRMS (ESI, negative): $[\text{M-NH}_4]^-$ found m/z 274.8747, calculated for $\text{C}_6\text{H}_2\text{Cl}_3\text{O}_4\text{S}$ 274.8745.

2.3.9. 2,3,4,5,6-Pentachlorophenylsulfate, ammonium salt (3i)—Yield: 60 %; white solid; mp: 220 °C (dec); ^{13}C NMR (100 MHz, CD_3OD): δ 130.9, 131.3, 132.8, 148.4. UV/Vis: $\lambda_{\text{max}}(\text{MeOH}) = 310$ nm, $\epsilon = 0.32 \times 10^4$ $\text{L}\cdot\text{mol}^{-1}\cdot\text{cm}^{-1}$ ($\lambda_{\text{max}}(\text{MeOH}) = 270$ nm, $\epsilon = 1.29 \times 10^4$ $\text{L}\cdot\text{mol}^{-1}\cdot\text{cm}^{-1}$). HRMS (ESI, negative): $[\text{M-NH}_4]^-$ found m/z 342.7972, calculated for $\text{C}_6\text{Cl}_5\text{O}_4\text{S}$ 342.7965.

2.3.10. 4-Bromo-2-chloro-phenolsulfate, ammonium salt (3j)—Yield: 94 %; white solid; mp: 200 °C (dec); ^1H NMR (400 MHz, CD_3OD): δ 7.41 (dd, 1H, $J = 8.8$ Hz, $J = 2.4$ Hz), 7.52 (d, 1H, $J = 8.8$ Hz), 7.59 (d, $J = 2.4$ Hz). ^{13}C NMR (100 MHz, CD_3OD): δ 118.2, 125.3, 129.1, 131.8, 133.7, 149.8. UV/Vis: $\lambda_{\text{max}}(\text{MeOH}) = 270$ nm, $\epsilon = 1.30 \times$

$10^4 \text{ L}\cdot\text{mol}^{-1}\cdot\text{cm}^{-1}$ ($\lambda_{j,\text{max}}(\text{MeOH}) = 270 \text{ nm}$, $\epsilon_j = 1.22 \times 10^4 \text{ L}\cdot\text{mol}^{-1}\cdot\text{cm}^{-1}$). HRMS (ESI, negative): $[\text{M}\text{-NH}_4]^-$ found m/z 284.8629, calculated for $\text{C}_6\text{H}_3\text{BrClO}_4\text{S}$ 284.8629.

2.4. Single crystal structure determinations

Crystals suitable for crystal structure analysis were obtained by slow crystallization of TCE sulfate esters **2g**, **2i** and **2j** as well as sulfate monoester **3f** from methanol. X-ray diffraction data were collected at 90.0(2) K on a Nonius KappaCCD diffractometer as described previously (Li et al., 2010d). The crystal data and the related parameters are summarized in Tables 1 and 2. Additional crystallographic data have been deposited with the Cambridge Crystallographic Data Center (CCDC) as Supplementary Publications CCDC 946880-946883. Copies of the data can be obtained free of charge on application to the CCDC, 12 Union Road, Cambridge CB2 1EZ, U.K. (fax, (+44)1223-336-033; deposit@ccdc.cam.ac.uk).

3. Results and discussion

3.1. Synthesis

Numerous sulfation reagents and conditions have been utilized for the synthesis of sulfates, including SO_3 -pyridine (Lee et al., 2004), SO_3 -trimethylamine (Tully et al., 2004), SO_3 -triethylamine₃ (Dusza et al., 1985), SO_3 -DMF (Young and Kiessling, 2002), sulfuric acid/*N,N*-dicyclohexylcarbodiimide (Mumma, 1966) and chlorosulfuric acid (Ho et al., 2012). Recent efforts have focused on the introduction of the sulfate group via protected sulfate diesters (Al-Horani and Desai, 2010). In particular the TCE group has emerged as an effective protecting group in the synthesis of aryl sulfates because it can be easily removed in the final step of the synthesis (Li et al., 2010d; Liu et al., 2004). In the present study we utilized this approach for the synthesis of chlorophenol sulfate monoesters **3a-j**. In short, TCE-protected chlorophenol sulfate diesters **2a-j** were obtained in 42-87 % yield by adding a solution of TCE chlorosulfate in dry THF to a solution of the respective chlorophenol, triethylamine and DMAP in dry THF at room temperature, followed by stirring for 2 hours (Scheme 1). The TCE-protected chlorophenol sulfate diesters **2a-j** were treated with Zinc powder/ammonium formate in methanol to yield the ammonium salts of the corresponding chlorophenol sulfate monoesters in good yields (75-94 %). The chlorophenol sulfate monoesters **3a-j** were stable at -20 °C for several months without any detectable decomposition, but degraded within days to the corresponding phenol **1** in methanolic solution. It is noteworthy that we were able to isolate chlorophenol sulfate monoesters **3f**, **3g** and **3i** with two chlorine substituents *ortho* to the sulfate group. In contrast, polychlorinated biphenyl (PCB) sulfate monoesters with a similar substitution pattern appeared to be unstable and readily degraded to the corresponding hydroxylated PCB (Li et al., 2010d).

3.2. Solid state molecular structure of TCE-protected chlorophenol sulfate diesters **2g**, **2i**, **2j** and chlorophenol sulfate monoester **3f**

The X-ray crystal structure of several TCE-protected chlorophenol sulfate diesters (**2g**, **2i** and **2j**) and chlorophenol sulfate ammonium salt (**3f**) (Figures 1 and 2; Tables 1 and 2) were determined to confirm their molecular structure. These solid state structures will aid future quantitative structure activity relationship studies of the interaction of chlorophenol sulfates with cellular target molecules, such as sulfotransferases (Czaplicka, 2004; Gulcan et al., 2008; Stehly and Hayton, 1988) or plasma binding proteins (Grimm et al., 2013). The C1-O1 and O1-S1 bond lengths of the sulfate ester group are of particular interest in this context because they are thought to correlate with the stability of the sulfate monoesters (Brandao et al., 2005). The C1-O1 bond of the TCE-protected chlorophenol sulfate diesters **2i**, **2g** and **2j** lies essentially in the plane of the phenyl ring system (Table 2). Its lengths followed the order **2i** < **2g** < **2j**, which is due to the decreasing number of electronegative substituents in

the aromatic ring system. The O1-S1 bonds of the *ortho*-disubstituted chlorophenol sulfate diesters **2g** and **2i** were slightly longer compared to the *ortho* monosubstituted O1-S1 bond of diester **2j**. These findings suggest that an increase in the number of electronegative substituents slightly weakens the O1-S1 ester bond (Brandao et al., 2005). However, further studies are needed to determine if the O1-S1 ester bond lengths of TCE-protected sulfate diesters indeed predicts environmentally and physiologically relevant differences in the stability of chlorophenol sulfates. The O-S-O bond angles of the TCE-protected chlorophenol sulfate diesters **2i**, **2g** and **2j** are comparable. Overall, similar trends in bond length and bond angles have been observed with structurally related TCE-protected sulfate diesters of polychlorinated biphenyls (Lehmler et al., 2013; Li et al., 2010a; Li et al., 2010b; Li et al., 2008; Li et al., 2010c).

The C1-O1 bond length of the chlorophenyl sulfate monoester **3f** (1.387 Å) was shorter than that of TCE-protected PCB and chlorophenol sulfate diesters (1.393 to 1.449 Å) (Lehmler et al., 2013; Li et al., 2010a; Li et al., 2010b; Li et al., 2008; Li et al., 2010c), which is ultimately a result of the negative charge of the sulfate group. C-O bond lengths for other aromatic sulfate monoesters were comparable and ranged from 1.374 to 1.409 Å (Brandao et al., 2005). The length of the S1-O1 ester bond of monoester **3f** (1.639 Å) was much longer compared to diesters **2g**, **2i** and **2j** (Table 2) due to the increased electron density of atom S1 in the negatively charged sulfate group. Comparable S-O bond lengths have been reported for structurally related aromatic sulfate monoesters, with S-O bond lengths ranging from 1.611 to 1.653 Å (Brandao et al., 2005). The other three S-O bond lengths of **3f** were comparable (1.441 to 1.453 Å). The corresponding S-O bond lengths in other aromatic sulfate monoesters ranged from 1.422 to 1.451 Å (Brandao et al., 2005). In contrast, the S1-O3 and S1-O4 bond lengths of diesters **2g**, **2i** and **2j** were shorter due to their double bond character.

4. Conclusions

Chlorophenols are an important group of persistent environmental pollutants. Although it is well established that chlorophenols are readily sulfated and subsequently excreted as sulfates with the urine in wildlife, laboratory animals, and humans, limited information is available about their toxicity and occurrence in the environment and humans. In the present study, a series of ten chlorophenol sulfates **3** was synthesized by sulfation of the corresponding chlorophenol **1** with 2,2,2-trichloroethyl chlorosulfate, followed by deprotection of the TCE-protected chlorophenol sulfate diester **2** with Zinc powder/ammonium formate. The neat chlorophenol sulfates **3** can be stored at -20 °C for several months without detectable degradation and can be used for toxicological, environmental and human biomonitoring studies. A similar synthetic strategy can also be employed for the synthesis of sulfate monoesters of other phenolic environmental pollutants.

Supplementary Material

Refer to Web version on PubMed Central for supplementary material.

Acknowledgments

This research was supported by grants ES05605, ES013661 and ES017425 from the National Institute of Environmental Health Sciences, National Institutes of Health (NIEHS/NIH). Contents of this manuscript are solely the responsibility of the authors and do not necessarily represent the official views of the NIEHS/NIH.

References

- Al-Horani RA, Desai UR. Chemical sulfation of small molecules-advances and challenges. *Tetrahedron*. 2010; 66:2907–2918. [PubMed: 20689724]
- ATSDR. Toxicological profile for chlorophenols. United States Department of Health and Human Services; 1999. <http://www.atsdr.cdc.gov/ToxProfiles/tp107.pdf>
- Brandao TAS, Priebe JP, Damasceno AS, Bortoluzia AJ, Kirby AJ, Nome F. Bond length-reactivity correlations for sulfate monoesters. The crystal structure of potassium 4- nitrophenyl sulfate, C₆H₄KNO₆S. *J Mol Struct*. 2005; 734:205–209.
- Chadwick RW, Copeland MF, Mole ML, Nesnow S, Cooke N. Comparative effect of pretreatment with phenobarbital, aroclor-1254, and beta-naphthoflavone on the metabolism of lindane. *Pestic Biochem Physiol*. 1981; 15:120–136.
- Cravedi JP, Lafuente A, Baradat M, Hillenweck A, Perdu-Durand E. Biotransformation of pentachlorophenol, aniline and biphenyl in isolated rainbow trout (*Oncorhynchus mykiss*) hepatocytes: comparison with in vivo metabolism. *Xenobiotica*. 1999; 29:499–509. [PubMed: 10379987]
- Czaplicka M. Sources and transformations of chlorophenols in the natural environment. *Science of the Total Environment*. 2004; 322:21–39. [PubMed: 15081735]
- Dusza JP, Joseph JP, Bernstein S. The preparation of estradiol-17 sulfates with triethylamine-sulfur trioxide. *Steroids*. 1985; 45:303–315. [PubMed: 3834654]
- Grimm FA, Lehmler HJ, He X, Robertson LW, Duffel MW. Sulfated metabolites of polychlorinated biphenyls are high-affinity ligands for the thyroid hormone transport protein transthyretin. *Environ Health Perspect*. 2013; 121:657–662. [PubMed: 23584369]
- Gulcan HO, Liu YG, Duffel MW. Pentachlorophenol and other chlorinated phenols are substrates for human hydroxysteroid sulfotransferase hSULT2A1. *Chem Res Toxicol*. 2008; 21:1503–1508. [PubMed: 18656962]
- Hawkins DR, Chasseaud LF, Woodhouse RN, Cresswell DG. The distribution, excretion and biotransformation of para-dichloro[¹⁴C]benzene in rats after repeated inhalation, oral and subcutaneous doses. *Xenobiotica*. 1980; 10:81–95. [PubMed: 7395268]
- Hedayatu M, Leveque JC, Denivell L. Action of sulfuryl chloride on some phenols and alcohols - alkylated and arylated phenol chlorosulfates. *C R Hebd Seances Acad Sci Ser C*. 1971; 273:1444–1447.
- Hissink AM, Dunnewijk R, van Ommen B, van Bladeren PJ. Kinetics and metabolism of 1,4-dichlorobenzene in male wistar rats: No evidence for quinone metabolites. *Chem Biol Interact*. 1997; 103:17–33. [PubMed: 9051121]
- Hissink AM, VanOmmen B, VanBladeren PJ. Dose-dependent kinetics and metabolism of 1,2-dichlorobenzene in rat: Effect of pretreatment with phenobarbital. *Xenobiotica*. 1996; 26:89–105. [PubMed: 8851824]
- Ho KL, Murphy MB, Wan Y, Fong BMW, Tam S, Giesy JP, Leung KSY, Lam MHW. Synthesis and characterization of bromophenol glucuronide and sulfate conjugates for their direct LC-MS/MS quantification in human urine as potential exposure markers for polybrominated diphenyl ethers. *Anal Chem*. 2012; 84:9881–9888. [PubMed: 23075377]
- Jensen J. Chlorophenols in the terrestrial environment. *Rev Environ Contam Toxicol*. 1996; 146:25–51. [PubMed: 8714220]
- Klos C, Dekant W. Comparative metabolism of the renal carcinogen 1,4-dichlorobenzene in rat: Identification and quantitation of novel metabolites. *Xenobiotica*. 1994; 24:965–976. [PubMed: 7900412]
- Layiwola PJ, Linnecar DFC, Knights B. The biotransformation of three ¹⁴C-labeled phenolic-compounds in 12 species of fresh-water fish. *Xenobiotica*. 1983; 13:107–113. [PubMed: 6880238]
- Lee JC, Lu XA, Kulkarni SS, Wen YS, Hung SC. Synthesis of heparin oligosaccharides. *J Am Chem Soc*. 2004; 126:476–477. [PubMed: 14719939]
- Lehmler HJ, He X, Duffel MW, Parkin S. 3,4 ,5-Trichlorobiphenyl-4-yl 2,2,2-trichloroethyl sulfate. *Acta Crystallogr, Sect E: Struct Rep Online*. 2013; 69:o620.

- Li X, Parkin S, Duffel MW, Robertson LW, Lehmler HJ. 4 -Chloro-biphenyl-4-yl 2,2,2-trichloro-ethyl sulfate. *Acta Crystallogr, Sect E: Struct Rep Online*. 2008; 66:o2464.
- Li X, Parkin S, Duffel MW, Robertson LW, Lehmler HJ. 3,4 -Dichloro-biphenyl-4-yl 2,2,2-trichloro-ethyl sulfate. *Acta Crystallogr, Sect E: Struct Rep Online*. 2010a; 66:o1615–1616.
- Li X, Parkin S, Duffel MW, Robertson LW, Lehmler HJ. 4 -Chloro-biphenyl-3-yl 2,2,2-trichloro-ethyl sulfate. *Acta Crystallogr, Sect E: Struct Rep Online*. 2010b; 66:o2306.
- Li X, Parkin S, Duffel MW, Robertson LW, Lehmler HJ. Biphenyl-4-yl 2,2,2-trichloro-ethyl sulfate. *Acta Crystallogr, Sect E: Struct Rep Online*. 2010c; 66:o1073.
- Li X, Parkin S, Duffel MW, Robertson LW, Lehmler HJ. An efficient approach to sulfate metabolites of polychlorinated biphenyls. *Environ Int*. 2010d; 36:843–848. [PubMed: 19345419]
- Liu Y, Apak TI, Lehmler HJ, Robertson LW, Duffel MW. Hydroxylated polychlorinated biphenyls are substrates and inhibitors of human hydroxysteroid sulfotransferase SULT2A1. *Chem Res Toxicol*. 2006; 19:1420–1425. [PubMed: 17112228]
- Liu Y, Lien IFF, Ruttgaizer S, Dove P, Taylor SD. Synthesis and protection of aryl sulfates using the 2,2,2-trichloroethyl moiety. *Org Lett*. 2004; 6:209–212. [PubMed: 14723530]
- Mumma RO. Preparation of sulfate esters. *Lipids*. 1966; 1:221–223. [PubMed: 17805615]
- Nistor C, Emneus J. A capillary-based amperometric flow immunoassay for 2,4,6-trichlorophenol. *Anal Bioanal Chem*. 2003; 375:125–132. [PubMed: 12520448]
- Oikari A, Anas E. Chlorinated phenolics and their conjugates in the bile of trout (*Salmo gairdneri*) exposed to contaminated waters. *Bull Environ Contam Toxicol*. 1985; 35:802–809. [PubMed: 4074948]
- Olaniran AO, Igbinsola EO. Chlorophenols and other related derivatives of environmental concern: Properties, distribution and microbial degradation processes. *Chemosphere*. 2011; 83:1297–1306. [PubMed: 21531434]
- Pascal-Lorber S, Despoux S, Jamin EL, Canlet C, Cravedi JP, Laurent F. Metabolic fate of 2,4-dichlorophenol and related plant residues in rats. *J Agric Food Chem*. 2012; 60:1728–1736. [PubMed: 22276578]
- Pekari K, Luotamo M, Jarvisalo J, Lindroos L, Aitio A. Urinary-excretion of chlorinated phenols in saw-mill workers. *Int Arch Occup Environ Health*. 1991; 63:57–62. [PubMed: 1856025]
- Renner G, Mucke W. Transformations of pentachlorophenol. 1. Metabolism in animals and man. *Toxicol Environ Chem*. 1986; 11:9–29.
- Simpson RF, Sefton MA. Origin and fate of 2,4,6-trichloroanisole in cork bark and wine corks. *Aust J Grape Wine Res*. 2007; 13:106–116.
- Stehly GR, Hayton WL. Detection of pentachlorophenol and its glucuronide and sulfate conjugates in fish bile and exposure water. *J Environ Sci Health, Part B*. 1988; 23:355–366.
- Stehly GR, Hayton WL. Metabolism of pentachlorophenol by fish. *Xenobiotica*. 1989; 19:75–81. [PubMed: 2756719]
- Trevino-Quintanilla LG, Freyre-Gonzalez JA, Guillen-Garcés RA, Olvera C. Molecular characterization of chloranilic acid degradation in *Pseudomonas putida* TQ07. *J Microbiol*. 2011; 49:974–980. [PubMed: 22203561]
- Tully SE, Mabon R, Gama CI, Tsai SM, Liu XW, Hsieh-Wilson LC. A chondroitin sulfate small molecule that stimulates neuronal growth. *J Am Chem Soc*. 2004; 126:7736–7737. [PubMed: 15212495]
- US EPA Website. <http://water.epa.gov/scitech/methods/cwa/pollutants.cfm>
- Ye XY, Zsuzsanna K, Needham LL, Calafat AM. Quantification of urinary conjugates of bisphenol A, 2,5-dichlorophenol, and 2-hydroxy-4-methoxybenzophenone in humans by online solid phase extraction-high performance liquid chromatography-tandem mass spectrometry. *Anal Bioanal Chem*. 2005; 383:638–644. [PubMed: 16132150]
- Young T, Kiessling LL. A strategy for the synthesis of sulfated peptides. *Angew Chem Int Ed*. 2002; 41:3449–3451.

Highlights

Chlorophenol sulfates were prepared via trichloroethyl-protected sulfate diesters

Ammonium salts of chlorophenol sulfates are stable for several months at -20 °C

Crystal structure analysis confirmed molecular structure of selected sulfate esters

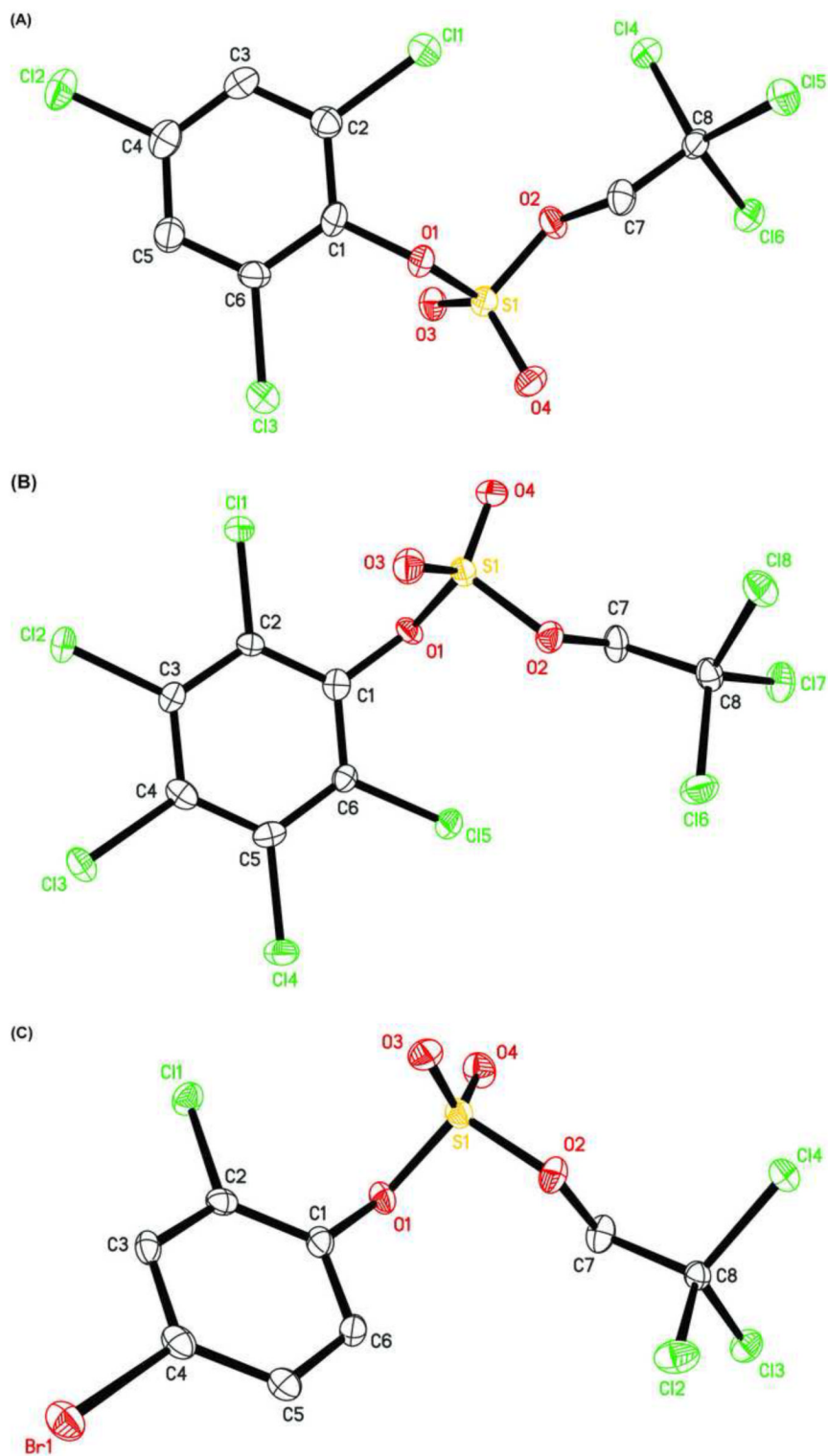


Figure 1. Molecular structure of (A) sulfuric acid, 2,4,6-trichlorophenyl ester 2,2,2-trichloroethyl ester (**2g**), (B) sulfuric acid, 2,3,4,5,6-pentachlorophenyl ester 2,2,2-trichloroethyl ester (**2i**), and

(C) sulfuric acid, 4-bromo-2-chloro-phenyl ester 2,2,2-trichloroethyl ester (**2j**) showing the atom numbering scheme. Displacement ellipsoids are drawn at the 50% probability level.

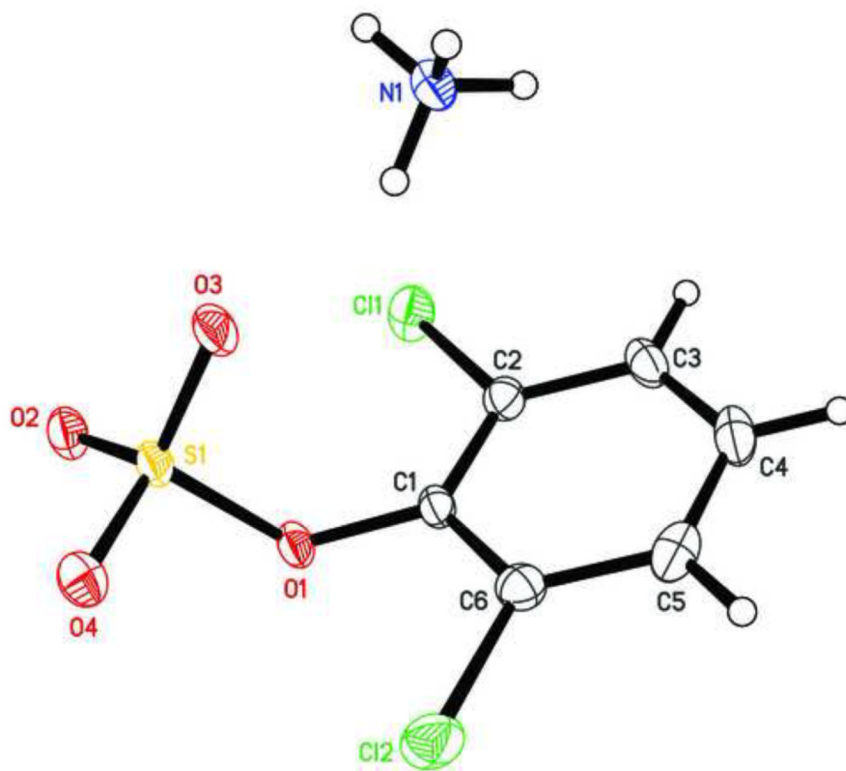
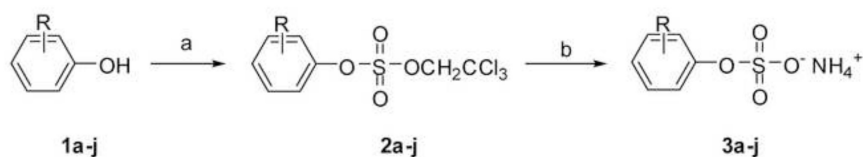


Figure 2. Molecular structure of 2,6-dichlorophenylsulfate ammonium salt (**3f**) showing the atom numbering scheme. Displacement ellipsoids of **3f** are drawn at the 50% probability level.



#	R	#	R
2a, 3a	2-Cl	2e, 3e	2,5-diCl
2b, 3b	3-Cl	2f, 3f	2,6-diCl
2c, 3c	4-Cl	2g, 3g	2,4,6-triCl
2d, 3d	2,4-diCl	2h, 3h	2,4,5-triCl
2e, 3e	2,5-diCl	2i, 3i	2,3,4,5,6-pentaCl
		2j, 3j	2-Cl-4-Br

Scheme 1.

Synthesis of the ammonium salts of chlorophenol sulfate monoesters **3** via the corresponding TCE-protected chlorophenol sulfate diesters **2**. (a) 2,2,2-Trichloroethyl chlorosulfate, DMAP, dry CH_2Cl_2 , 2 h; (b) Zn powder, HCO_2NH_4 , MeOH, 1 h.

Table 1

X-ray crystallographic data for TCE-protected chlorophenol sulfate diesters **2g**, **2i** and **2j** and chlorophenol sulfate monoesters **3f**.

Property	2g	2i	2j	3f
Formula	C ₈ H ₄ Cl ₆ O ₄ S	C ₈ H ₂ Cl ₈ O ₄ S	C ₈ H ₅ BrCl ₄ O ₄ S	C ₈ H ₇ Cl ₂ NO ₄ S
<i>M</i>	408.87	477.76	418.89	260.09
T/K	90.0(2)	90.0(2)	90.0(2)	90.0(2)
Wavelength (Å)	0.71073	0.71073	0.71073	0.71073
Space group	Monoclinic, P2 ₁ /c	Monoclinic, P2 ₁	Orthorhombic, P b c a	Monoclinic, P2 ₁ /c
<i>a</i> (Å)	8.2269	6.3617	12.7893	10.8336
<i>b</i> (Å)	11.1533	11.2063	9.3856	7.2384
<i>c</i> (Å)	15.7373	10.8794	22.5651	13.5811
(°)	90.000	90.000	90.000	90.000
(°)	99.777	94.9092(10)	90.000	106.7814(11)
(°)	90.000	90.000	90.000	90.000
<i>V</i> (Å ³)	1423.04 (13)	772.76 (3)	2708.61 (11)	1019.65 (5)
<i>Z</i>	4	2	8	4
Calculated density (mg m ⁻³)	1.908	2.053	2.054	1.694
Absorption coefficient (mm ⁻¹)	1.356	1.599	3.978	0.828
<i>F</i> (000)	808	468	1632	528
Crystal size (mm)	0.40 × 0.22 × 0.02	0.11 × 0.06 × 0.03	0.25 × 0.15 × 0.08	0.25 × 0.20 × 0.13
range (°)	2.25 to 27.44	1.88 to 27.47	1.80 to 27.49	1.96 to 27.49
Limiting indices	-10 <i>h</i> 10 -14 <i>k</i> 14 -20 <i>l</i> 20	-8 < <i>h</i> < 8 -14 < <i>k</i> < 14 -14 < <i>l</i> < 14	-16 <i>h</i> 16 -12 <i>k</i> 12 -29 <i>l</i> 29	-13 <i>h</i> 14 -9 <i>k</i> 9 -17 <i>l</i> 17
Reflections collected/unique	18,319 / 3240	18,363 / 3539	29,859 / 3111	6648/2336
<i>R</i> (int)	0.0830	0.0620	0.0700	0.0450
Completeness to =27.44	99.9%	99.9%	99.9%	99.9%
Max. and min. transmission	0.973 and 0.613	0.954 and 0.844	0.741 and 0.436	0.900 and 0.820
Date/restraints/parameters	3240 / 0 / 172	3539 / 1 / 190	3111 / 0 / 163	2336 / 0 / 139
Goodness-of-fit on <i>F</i> ²	1.050	1.079	1.071	1.119
Final <i>R</i> indices I>2 (I)	<i>R</i> 1 = 0.0518; <i>wR</i> 2 = 0.1196	<i>R</i> 1 = 0.0420; <i>wR</i> 2 = 0.0915	<i>R</i> 1 = 0.0329; <i>wR</i> 2 = 0.0677	<i>R</i> 1 = 0.0350; <i>wR</i> 2 = 0.0836

Property	2g	2i	2j	3f
R indices (all data)	R1 = 0.0903, wR2 = 0.1366	R1 = 0.0581; wR2 = 0.0996	R1 = 0.0559; wR2 = 0.0741	R1 = 0.0449; wR2 = 0.0892
Largest diff. peak and hol (eÅ ⁻³)	0.911 and -0.726	0.469 and -0.410	0.668 and -0.509	0.360 and -0.525

Table 2

Selected bond lengths and bond angles of TCE-protected chlorophenol sulfate diesters **2g**, **2i** and **2j** and chlorophenol sulfate monoester **3f**.

Property	2g	2i	2j	3f
Bond length (Å)				
C1-O1	1.406	1.388	1.420	1.387
S1-O1	1.604	1.606	1.588	1.639
S1-O2	1.564	1.564	1.569	1.453
S1-O3	1.418	1.415	1.419	1.441
S1-O4	1.420	1.414	1.411	1.441
Bond angles (°)				
O1 - S1-O2	101.76	101.92	102.62	101.68
O1-S1-O3	110.02	110.03	110.64	106.01
O1-S1-O4	104.44	104.60	104.82	105.47
O2-S1-O3	105.75	105.50	104.50	115.16
O2-S1-O4	109.96	110.06	110.35	112.27
O3-S1-O4	122.98	122.85	122.30	114.63
Deviation of O1 from Ar plane (Å)	0.108(5)	0.023(6)	0.058(5)	0.065(3)