

# SELDI-TOF analysis of glioblastoma cyst fluid is an approach for assessing cellular protein expression

Martin Hoelscher<sup>1</sup>, Nina Richter<sup>1</sup>, Christian Melle<sup>2</sup>, Ferdinand von Eggeling<sup>2</sup>, Anne Schaezner<sup>3</sup>, Ulf Nestler<sup>1</sup>

<sup>1</sup>Department of Neurosurgery, Justus Liebig University, Giessen, Germany, <sup>2</sup>Institute of Human Genetics, CUCA, Jena University Hospital, Jena, Germany, <sup>3</sup>Institute for Neuropathology, Justus Liebig University, Giessen, Germany

**Objectives:** In about 10% of glioblastoma patients, preoperative MRI discloses the presence of tumor cysts. Whereas the impact of cystic appearance on prognosis has been discussed extensively, only little is known about the tumor cyst fluid. In this study, we tested the feasibility of the surface enhanced laser desorption/ionization time of flight (SELDI-TOF) technique to detect cyst fluid proteins.

**Methods:** Cyst fluid was collected from 21 glioblastoma patients for SELDI-TOF analysis and compared to control cerebrospinal fluids from 15 patients with spinal stenosis. Resulting protein peaks with significant differences between groups were further described, using the molecular weight in an internet search of protein databases and publications. Two potential cyst fluid proteins, basigin and ferritin light chain, were selected for immunohistological detection in the histologic slides of the patients, metallothionein (MT) served as negative control.

**Results:** As supposed from the results of the SELDI-TOF analysis, basigin and ferritin were detected immunohistochemically in the cyst wall, whereas MT was more equally distributed between the cyst wall and the surrounding tumor tissue. Median survival time of the patients was 20 months (range 2 to 102 months) and correlated with age, but not with expression of the three proteins.

**Discussion:** The SELDI-TOF approach reveals a number of proteins, potentially present in glioblastoma cyst fluid. Identification of these proteins in tumor cells may help understand the pathogenetic pathways and the prognostic value of cystic changes.

**Keywords:** Basigin, Cystic glioblastoma, Ferritin, Metallothionein, SELDI-TOF

## Introduction

In patients with histological diagnosis of glioma WHO IV<sup>o</sup>, the appearance of tumor cysts on preoperative MRI is not rare. According to the literature, cystic tumors are encountered in 7% to 13% of glioblastoma cases. Cystic features have also been observed in a number of entities, such as meningioma, hemangioblastoma, or metastatic tumors.<sup>1</sup> While cystic low-grade gliomas have been associated with increased postoperative survival compared to non-cystic low-grade gliomas, this is a matter of debate for cystic glioblastoma compared to non-cystic glioblastoma.<sup>2,3</sup>

Histologic evaluation of the cyst wall helps to distinguish between 'real' cysts with an endothelial coating and 'pseudocysts' with palisading cellular structures around the cavity.<sup>4</sup> The cavity itself cannot be assessed histologically, because of loss of the cyst content during fixation and preparation. Cyst fluid

remains difficult to obtain and to examine, because most samples are small and the protein concentration is not sufficient for standard examinations such as western blot.

This is why, only little information about the cyst fluid is available and the hypotheses for cyst formation include necrobiotic degradation of tumor tissue, active secretion of proliferative factors by the tumor cells, or mere trapping of cerebrospinal fluid (CSF).<sup>5-7</sup> Depending on the way of cyst formation, the content of the cyst fluid is supposed to include apoptotic pathway proteins, e.g. TNF, Fas, or caspases, high concentrations of specific secreted proteins such as VEGF or TGF-beta, or a protein content very similar to that of CSF.

It has been shown that in the case of active secretion of proteins into the cystic cavity, the identification of the cyst content can improve knowledge on pathophysiologic pathways of the surrounding glioblastoma cells, which results in valuable hints for treatment strategies.<sup>7</sup>

Correspondence to: Ulf Nestler, Justus Liebig University, Giessen, Germany. Email: ulf.nestler@medizin.uni-leipzig.de

In this study, in order to examine the protein content in detail, we introduce the surface enhanced laser desorption ionization time of flight (SELDI-TOF) analysis of glioblastoma cyst fluid. The technique needs only small amounts of sample, allows for protein-screening, and delivers protein weights with a high exactitude.<sup>8</sup> The results are compared to the SELDI-TOF analysis of CSF specimens from tumor-free patients.

The SELDI-TOF mass spectroscopy is a discovery oriented approach that delivers a huge number of detectable protein sizes. When studying a single spectroscopic size, there are several proteins that could have been at the origin of the peak. In order to determine which of the corresponding proteins are present in the cyst fluid, immunohistological staining of the surrounding cyst wall has to be performed. Two potential candidates, basigin and ferritin, and one negative control, metallothionein (MT), were examined histologically in this study.<sup>9–11</sup>

## Methods

### Surface enhanced laser desorption ionization time of flight

#### Sample collection

Upon planning the neurosurgical resection or biopsy, informed consent from patients with cystic brain tumors was obtained to withdraw and store tumor cyst fluid for research purposes. During the intervention the cyst was punctured under ultrasonographic control or stereotactically, and the fluid was stored at 4°C for a few hours before being centrifuged. The supernatant was frozen at –20°C until use.

Altogether, cyst fluids from 18 glioblastoma patients and 7 recurrent glioblastoma were analyzed using SELDI-TOF. From these, 16 glioblastoma specimens and 5 recurrent glioblastoma were available for histologic immunostaining. Among these 21 cases 11 were male and 10 were female patients, mean age was 53.9 years (range 21 to 77) at the time of first operation.

As a control, 15 patients undergoing myelography because of spinal stenosis gave their informed consent for CSF withdrawal. The specimens were prepared as above.

#### Processing

Directly before use, the specimens were thawed and diluted 1:10 in buffer solution. Two microliters of the solution were pipetted on the chromatographic matrix slot and given time to be absorbed. The SELDI-TOF mass spectroscopy (ProteinChip technology) uses the affinity chromatographic surfaces to bind proteins specifically.<sup>8</sup> Desorption in an electric field using a laser beam enables a mass spectrometric analysis that results in a protein spectrum with calculation of molecular weights with an accuracy of 0.3% (Fig. 1).

## Statistical work-up

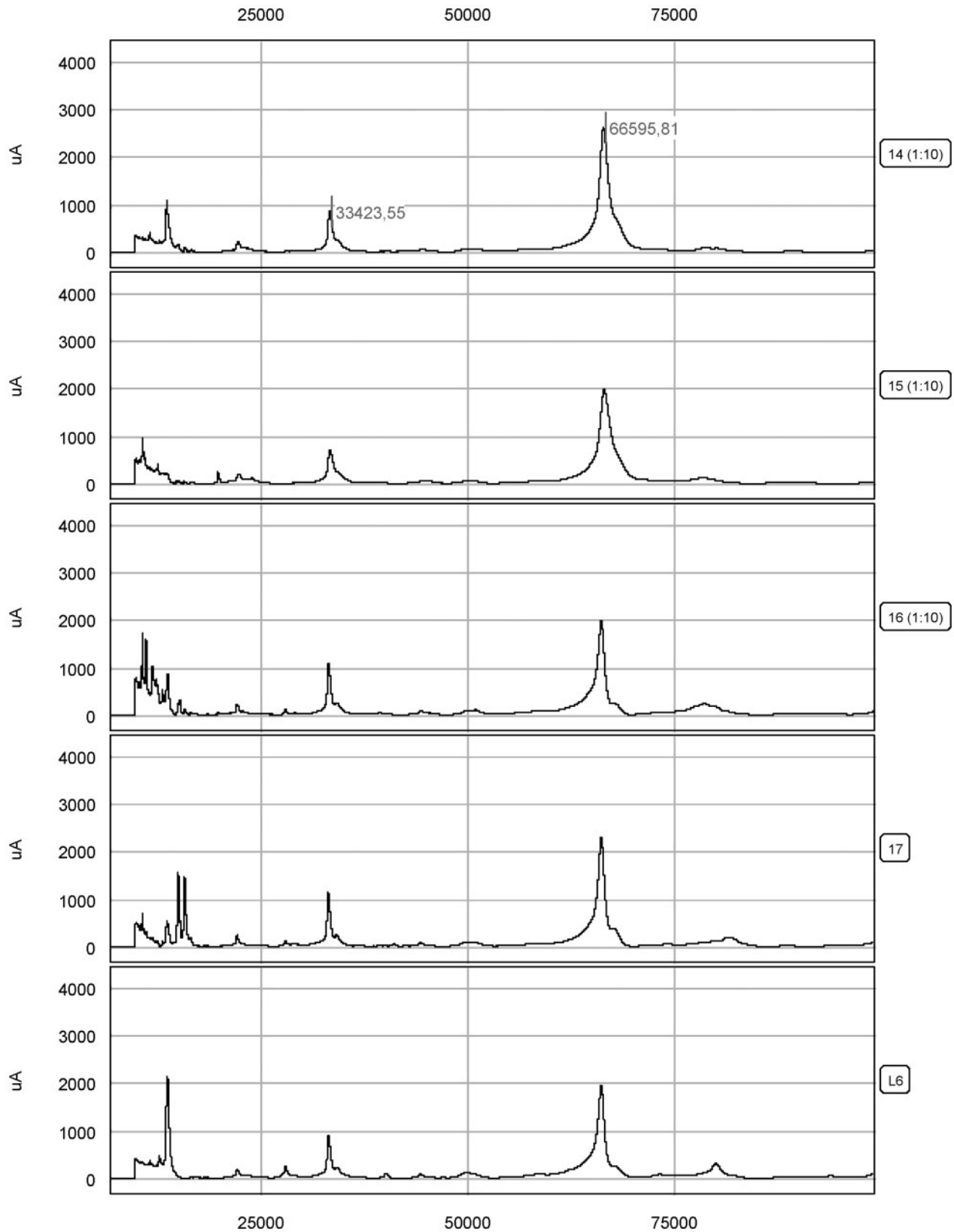
After determination of the different protein peaks in all samples, a computer-based statistical analysis of peak intensities was performed. At first, spectra were normalized towards each other and checked for data quality and plausibility. Then molecular masses and intensities of the peaks were compared between non-tumor CSFs and different tumor cyst fluids, grouped according to the underlying histological diagnosis. Protein sizes were listed when present in tumor cyst fluid and absent in control CSFs or *vice versa* (Table 1). The probability for a coincidental difference was calculated, taking into account the number of analyzable specimens per group and the molecular weight of each protein.<sup>8</sup> Protein sizes were retained when a *p*-value below 0.05 was found.

In this way a list of protein peaks, classified by their molecular weight and stratified by *p*-values, was obtained (Table 1). To identify which proteins were probably apt to have resulted in the spectroscopic peaks, an internet based search in the SwissProt database using the TagIdent tool was performed. The search was restricted concerning the species (*Homo sapiens*) and the isoelectric point (7.45, but allowing for a broad variation of  $\pm 5.0$ ). Finally, the molecular weight of the spectroscopic peak was entered, accepting potential proteins in the range of  $\pm 0.3\%$  of the mass, according to the accuracy of the SELDI-TOF measurements.

The TagIdent tool revealed several potential candidate proteins per peak. In order to further restrict this list of potential candidates, a Pubmed search was added. If publications concerning the protein were found, one point each was attributed for the following items: (i) protein is secreted or is a membrane protein, (ii) protein has been described in (healthy) brain, (iii) protein has been described in tumor tissue, and (iv) protein has been described in brain tumor tissue. By retaining the proteins which reached the most points, the algorithm reduced the potential candidate proteins to less than five in most peaks (Table 2). With this algorithm we postulated the presence of basigin and ferritin in the cyst wall, whereas MT did not fulfill the criteria.

## Immunohistology

In order to verify this approach to glioblastoma protein expression, we analyzed the presence of candidate proteins basigin and ferritin immunohistochemically in paraffin embedded slides for the 21 cystic glioblastoma patients. As control, MT was stained. Monoclonal mouse antibodies against metallothionein MT-1 and MT-2 (ab12228) and basigin (ab49493), as well as a rabbit-polyclonal antibody against ferritin (ab76768) were purchased from abcam (Cambridge, UK).



**Figure 1** SELDI-TOF chromatographic results for four tumor cyst fluids #14 to #17 and one cerebrospinal fluid control #L6. The molecular weight of the peaks in daltons is given on the horizontal axis and the height of the peaks can be compared in micro-amperes on the vertical axis, as shown here for albumin and double loaded albumin.

Basigin staining: the primary antibody is a monoclonal mouse antibody recognizing the extracellular domain of the protein. After 15 minutes of heat antigen unmasking in 0.01 mol/l citric acid monohydrate buffer (pH 6.0, Sigma, Germany),

PBS washing and peroxidase blocking for 7 minutes in 3% H<sub>2</sub>O<sub>2</sub> were performed. After washing with aqua destillata and PBS, incubation with normal goat serum 1:20 followed for 20 minutes. The primary antibody (1:50) was incubated for 1 hour at room

**Table 1 Comparing the presence of proteins in glioblastoma cyst fluid with control CSF, a significant difference was found for 51 peaks. Twenty-eight proteins were present in glioblastoma but absent in CSF. Glial fibre acid protein (GFAP) (49 880 Da) lies in the 0.3% range of the 49 916 peak and VEGF121 (17 219 Da) in the range of the 17 224 peak. The molecular mass of 19 899 Da corresponds to the ferritin light chain. The protein basigin was detected at 40 211 Da in recurrent glioblastoma when compared to glioblastoma cyst fluid (data not shown)**

Glioblastoma versus CSF			CSF versus glioblastoma		
Signal found in	MW (Da)	p-value	Signal found in	MW (Da)	p-value
gbm cyst fluid	6424	$4.42 \times 10^{-7}$	CSF	3892	$4.31 \times 10^{-4}$
gbm cyst fluid	6633	$1.53 \times 10^{-5}$	CSF	6799	$1.08 \times 10^{-3}$
			CSF	6846	$6.15 \times 10^{-3}$
			CSF	6888	$1.47 \times 10^{-4}$
			CSF	6911	$1.32 \times 10^{-5}$
			CSF	6936	$3.82 \times 10^{-6}$
			CSF	7647	$5.24 \times 10^{-6}$
gbm cyst fluid	7921	$3.46 \times 10^{-2}$			
gbm cyst fluid	8633	$4.48 \times 10^{-6}$			
gbm cyst fluid	8687	$3.82 \times 10^{-6}$			
gbm cyst fluid	8899	$9.83 \times 10^{-5}$			
gbm cyst fluid	9362	$3.26 \times 10^{-6}$			
gbm cyst fluid	9418	$3.26 \times 10^{-6}$			
gbm cyst fluid	9948	$4.42 \times 10^{-7}$			
gbm cyst fluid	10 829	$5.56 \times 10^{-3}$			
			CSF	11 571	$2.48 \times 10^{-4}$
			CSF	11 679	$2.36 \times 10^{-6}$
gbm cyst fluid	12 559	$2.77 \times 10^{-6}$			
			CSF	13 687	$3.69 \times 10^{-5}$
			CSF	13 737	$2.18 \times 10^{-4}$
			CSF	13 775	$5.65 \times 10^{-5}$
			CSF	13 821	$1.78 \times 10^{-5}$
			CSF	13 879	$9.74 \times 10^{-6}$
			CSF	14 006	$6.75 \times 10^{-4}$
gbm cyst fluid	14 946	$4.08 \times 10^{-3}$			
gbm cyst fluid	15 118	$1.00 \times 10^{-2}$			
gbm cyst fluid	15 842	$9.12 \times 10^{-3}$			
gbm cyst fluid	16 656	$1.33 \times 10^{-2}$			
gbm cyst fluid	17 224	$6.24 \times 10^{-7}$			
gbm cyst fluid	17 372	$1.70 \times 10^{-6}$			
gbm cyst fluid	19 899	$1.32 \times 10^{-5}$			
gbm cyst fluid	21 615	$2.07 \times 10^{-2}$			
			CSF	22 884	$8.37 \times 10^{-5}$
			CSF	26 687	$1.06 \times 10^{-2}$
gbm cyst fluid	27 904	$3.35 \times 10^{-3}$			
gbm cyst fluid	28 056	$1.61 \times 10^{-5}$			
gbm cyst fluid	28 256	$7.27 \times 10^{-6}$			
gbm cyst fluid	28 918	$2.98 \times 10^{-5}$			
			CSF	34 268	$3.79 \times 10^{-4}$
			CSF	40 051	$1.17 \times 10^{-5}$
gbm cyst fluid	43 354	$2.70 \times 10^{-6}$			
gbm cyst fluid	47 111	$2.68 \times 10^{-3}$			
gbm cyst fluid	49 916	$1.29 \times 10^{-2}$			
			CSF	67 937	$4.18 \times 10^{-3}$
			CSF	73 115	$9.66 \times 10^{-5}$
			CSF	80 046	$1.88 \times 10^{-5}$
gbm cyst fluid	94 289	$6.35 \times 10^{-4}$			
gbm cyst fluid	122 567	$6.41 \times 10^{-3}$			
			CSF	146 376	$2.68 \times 10^{-3}$

CSF, cerebrospinal fluid; gbm, glioblastoma; MW (Da), molecular weight in daltons; p-value, level of significance in exponential form.

temperature, followed by washing in PBS and visualization with the streptavidin-biotin HRP-duet system (DAKO, Denmark), which detects primary antibodies from mouse or rabbit.

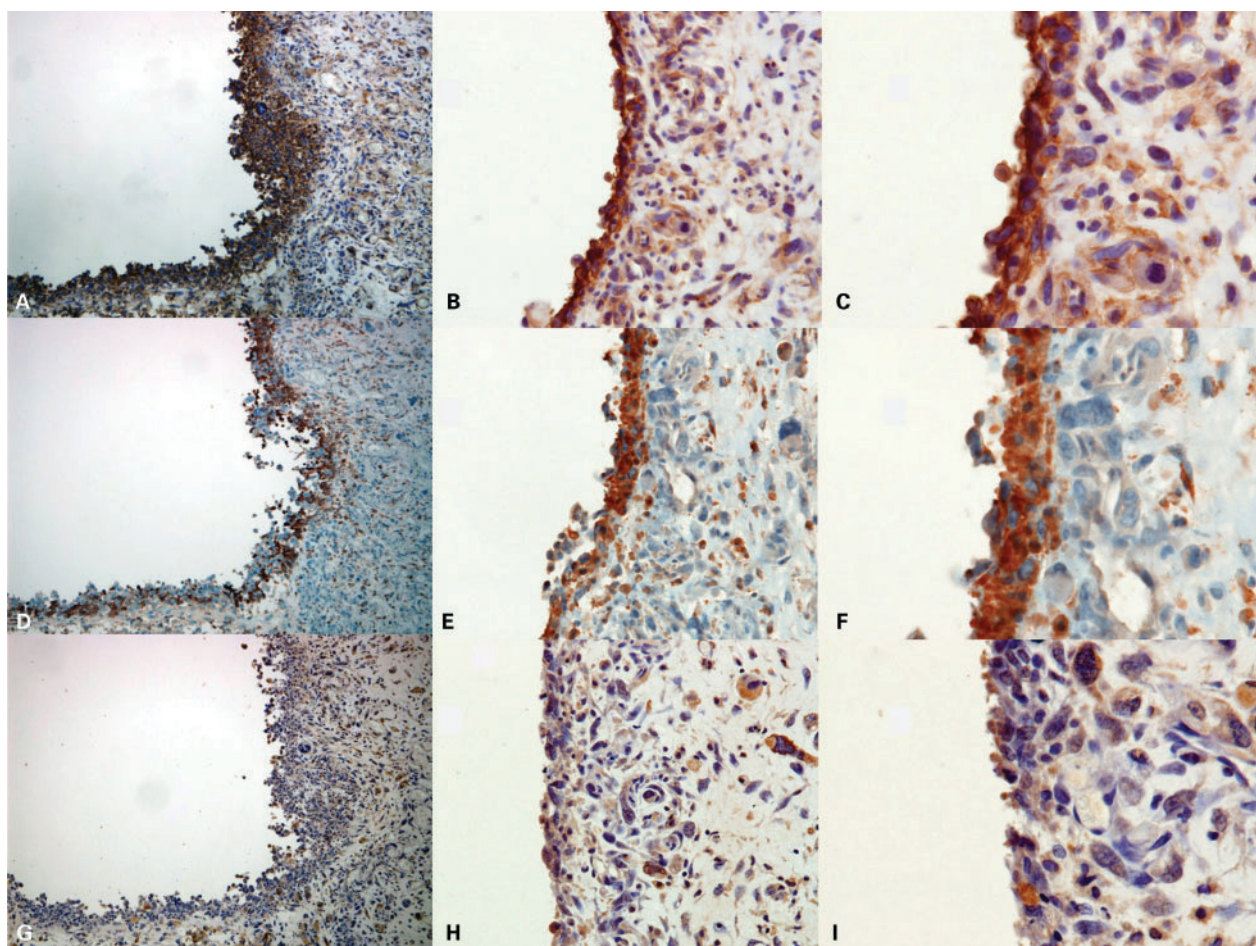
**Ferritin staining:** the primary polyclonal rabbit antibody is directed against purified mitochondrial ferritin, which is a 24-oligomer of ferritin heavy chains and light chains in varying numbers. Heat antigen unmasking for 15 minutes in 0.001 mol/l

EDTA buffer (pH 8.0, Sigma), PBS washing, peroxidase blocking, and normal goat serum blocking were performed. The primary antibody (1:500) was incubated for 1 hour at room temperature, the HRP-duet system was used for staining.

**Metallothionein staining:** the primary mouse monoclonal antibody reacts with MT-1 and MT-2. Without heat unmasking, the peroxidase blocking and normal goat serum were applied as above. The

**Table 2 The 10 protein peaks present in glioblastoma and absent in CSF with the highest significance values, together with some of their candidate proteins. TagIdent tool identification used the molecular weight and a Pubmed search examined the relationship of the candidate to brain, to tumor, and to brain tumor**

Glioblastoma versus CSF								
<i>p</i> -value	Mw [Da]	Mw candidate	Name of candidate protein	pI	Amino acids	Chromosome	Characteristics	
1	$0.442 \times 10^{-6}$	6424	6437	Leucine zipper protein 6	9.69	58	7q33	Associated with myeloproliferative disease, highly expressed in brain tissue
2	$0.442 \times 10^{-6}$	9948	9933 9942 9967	Isoform 6 of Iaforin Cocaine- and amphetamine-regulated transcript protein Isoform 3 of coxsackievirus and adenovirus receptor	9.05 7.75 5.23	88 89 89	6q24 5q13.2 21q21.1	Defects cause Lafora epilepsy Hypothalamic satiety factor Secreted cell adhesion molecule
3	$0.624 \times 10^{-6}$	17 224	17 196	Tumor necrosis factor ligand superfamily member 12, secreted form	9.61	156	17p13.1	Promotes endothelial cell proliferation, highly expressed in brain tissue
			17 219 17 231	Isoform VEGF121 of vascular endothelial growth factor A Contingent replication of cDNA 4	6.49 6.4	147 156	6p12 1q22	Acidic growth factor, freely secreted Promotes FOS promoter transcription, expressed in brain tissue
4	$1.70 \times 10^{-6}$	17 372	17 329/17 401 17 353 17 376 17 377 17 387	Isoform 4 and 5 of transforming growth factor alpha Tumor necrosis factor, soluble form Activation peptide fragment 1 of prothrombin Interleukin-1 beta Interleukin-7	7.9 6.99 5.01 5.91 8.71	162/163 157 155 153 152	2p13 6p21.3 11p11 2q14 8q12-q13	Promotes cell proliferation, binds to EGF receptor Secreted part of proteolytically cleaved TNF-alpha Secreted, involved in hemostasis Secreted, probably released by damaged cells Secreted, hematopoietic growth factor
5	$2.70 \times 10^{-6}$	43 354	43 349 43 369	Haptoglobin P2X purinoceptor 4	6.13 8.28	388 388	16q22.1 12q24.32	Secreted tetramer, binds hemoglobin Receptor for ATP
6	$2.77 \times 10^{-6}$	12 559	12 553 12 595	Thy-1 membrane glycoprotein Dipeptidyl-peptidase 1 exclusion domain chain	9.17 4.95	111 110	11q22.3-q23 11q14.2	Antigen CD90, synaptogenesis in brain Cathepsin C
7	$3.26 \times 10^{-6}$	9362	9370 9377 9390	NADH dehydrogenase 1 alpha subcomplex subunit 4 Isoform 8 of forkhead box protein P2 Isoform 3 of tumor necrosis factor receptor superfamily member 6	9.41 5.64 9.19	81 87 86	7p21.3 7q31.1 10q24.1	Mitochondrial respiratory chain, ubiquinone Transcriptional repressor with strong expression in parts of the developing brain Secreted, blocks apoptosis
8	$3.26 \times 10^{-6}$	9418	9419 9425	C-X-C motif chemokine 14 Parathyroid hormone	9.9 9.1	77 84	5q31.1 11p15.2	Secreted, chemoattractant for neutrophils Secreted hormone
9	$3.82 \times 10^{-6}$	8687	8671 8685 8708	Isoform 2 of high mobility group protein 20A C-C motif chemokine 2 Apolipoprotein A-II	3.88 9.39 5.05	81 76 77	15q24 17q11.2-q12 1q21-23	Plays a role in neuronal differentiation Secreted, chemoattractant for monocytes and basophils Secreted, stabilizes HDL structure
10	$4.48 \times 10^{-6}$	8633	8614 8642 8646	Protein BRICK1 NADH dehydrogenase 1 beta subcomplex subunit 2 C-X-C motif chemokine 10	5.36 4.4 10.19	74 72 77	3p25.3 7q34-q35 4q21.1	Required for cell proliferation Mitochondrial respiratory chain, ubiquinone Secreted, chemoattractant for monocytes and T-lymphocytes Potential tumor suppressor
			8656	Isoform H of Ras association domain-containing protein 1	4.2	75	3p21.2	Potential tumor suppressor
			8658	Calcium/calmodulin-dependent protein kinase II inhibitor 2	5.31	79	3q27.1	Translates intracellular calcium changes associated with glioma cell migration



(A–C) Basigin (CD147) staining of the cyst wall (original magnification 10×, 20×, and 40×, respectively). (D–F) Ferritin staining. (G–I) MT staining.

**Figure 2** Immunohistologic staining of two different glioblastoma cyst specimens (case 1: A, D, G and case 2: B, C, E, F, H, I). Basigin and ferritin are strongly expressed in the cyst walls, whereas metallothionein (MT) staining is less prominent and more equally distributed between the cyst wall and the main tumor tissue.

primary antibody (1:100) was incubated for 1 hour at room temperature, HRP-duet staining followed.

A counterstain with hemalaun was added (Fig. 2). Histologic slides of pulmonary carcinoma, human liver, and astrocytoma tissue served as positive controls for basigin, ferritin, and MT, respectively. The same specimens were stained without application of the first antibodies as negative controls.

All tumors were diagnosed in accordance with the WHO classification by a neuropathologist. One hundred and sixty-five tumor cysts were examined in the paraffin embedded specimens of the 21 patients, with a mean value of 4.2 cysts per patient. The immunostained sections were reviewed by one examiner (HM) after developing a standardized protocol with a semiquantitative scale from 0 to +++ for staining intensities. After the intensity of the cyst wall had been scaled, surrounding tumor tissue was examined using 20 fields of view and these staining intensities were averaged. The quotient, obtained by dividing the value of staining intensity in the cyst wall by the averaged value in surrounding cells, was calculated for each of the three proteins. In

this way, predominance of the protein in the cyst wall was depicted by a quotient >1. For patients with multiple cysts in the paraffin slices, the quotients for each cyst were determined and then a mean cyst quotient was calculated for the patient.

To assess a probable impact of protein expression or age on survival since first surgery, statistical analysis was performed using the unpaired t-test. Patients were subgrouped into short-term survivors (up to 6 months) and long-term survivors (more than 30 months), and their results were compared to those of the opposite group, as well as to those of the cohort (Table 3).

## Results

The SELDI-TOF analysis of the glioblastoma specimens resulted in a list of 51 protein peaks with significant difference between glioblastoma cyst fluid and control CSF. Among them, 28 proteins were present in glioblastoma cyst fluid and 23 in CSF (Table 1).

In a similar way, cyst fluid from recurrent glioblastoma was compared to CSF and to cyst fluid from glioblastoma (data not shown). In this dataset

**Table 3 Staining quotients in 165 cysts. Mean staining quotients and mean age in patients, grouped according to survival time since first operation**

Staining quotient: cyst wall versus tumor tissue in 165 cysts					
		Basigin	Ferritin	Metallothionein	
Cysts with quotient > 1		139 (84%)	107 (65%)	77 (47%)	

Mean staining quotient in patient tissues					
	Number	Basigin	Ferritin	Metallothionein	Mean age (years)
All patients	21	1.48	1.30	1.09	53.9
Surviving 1–6 months	6	1.39	1.36	1.267	69.3
Surviving 7–12 months	1	1.42	1.20	0.91	44.0
Surviving 13–18 months	3	1.47	1.13	0.96	67.0
Surviving 19–24 months	5	1.43	1.42	1.14	44.0
Surviving 25–30 months	2	1.40	1.68	1.08	31.0
Surviving >30 months	4	1.53	1.27	1.09	47.3

the protein peak at 40 211 Da is supposedly basigin. It was the only peak to be significantly more often present in recurrent glioblastoma fluid than in glioblastoma cyst fluid ( $p = 0.025$ ).

Protein database and literature searches allowed identification of proteins potentially present in cyst fluid (Table 2). Several peaks could be directly attributed to proteins which have already been described in glioblastoma cyst fluid. This is the case for GFAP (peak at 49 916 Da, Table 1) and for VEGF121 (peak at 17 224 Da, Table 2).<sup>1,12</sup>

Immunohistologically, when analyzing all 165 glioblastoma cysts separately, in 139 (84%) the expression of basigin was more prominent in the cyst wall than in solid tumor tissue, as seen by a staining quotient of 1 or higher (Fig. 2, Table 3). This was also the case for ferritin in 107 cysts (65%), whereas less than half of the cysts (77, 47%) displayed MT in the cyst wall. When comparing the mean cyst staining quotients for patients, the values were highest for basigin, followed by ferritin and MT (Table 3).

From a statistical point of view, no correlation was found between survival time and the expression pattern of the three proteins (Table 3). In contrast to this, younger age was confirmed as a positive prognostic factor. Patient age differed significantly between short-term survivors and long-term survivors ( $p = 0.0311$ ), as well as between short-term survivors and the rest of the cohort ( $p = 0.0069$ ). Median survival time after first surgery was 20 months, mean 23.9 months. Survival ranged from 2 to 102 months, the 95% confidence interval went from 13.2 to 26.8 months. Eleven patients (52.4%) survived for more than 18 months (mean age 42.8 years) and 6 patients (28.6%) for more than 24 months (mean age 41.8 years).

## Discussion

In the present study, immunohistologic staining confirmed the plausibility of the SELDI-TOF analytic

algorithm and revealed new details on glioblastoma protein expression. Nevertheless, for unequivocal identification of the proteins in cyst fluid, protein sequencing, fingerprint electrophoresis, or an ELISA-based protein pull-down assay of the fluid would be necessary.

The cyst wall staining quotients also support the results of the SELDI-TOF analysis. Metallothionein, which is known to be present in glioma cells, has a molecular weight near the protein peak at 6424 but lies outside the 0.3% accuracy margin. This 'negative' result from SELDI-TOF analysis is consistent with a less prominent immunohistologic staining signal and a cyst to tumor ratio around 1 in most patients (Table 3). Contrary to this, the signals for basigin and ferritin are predominant in the cyst wall.

The results of the analytic approach are further supported by recent publications. CaMKII (8658 Da) and haptoglobin (43 349 Da), both predicted by the SELDI-TOF analysis (Table 2), have been shown to play roles in glioblastoma pathogenesis.<sup>13,14</sup>

Regarding hypotheses on glioblastoma cyst formation, SELDI-TOF proves that cyst fluid is more than merely trapped CSF.<sup>6</sup> This is shown by the occurrence of protein peaks with statistically significant differences between CSF and cyst fluid. Interestingly, there is also an absence of certain protein peaks in the glioblastoma cyst fluids when compared to CSF (Table 1). This could signify complete synthesis of the cyst fluid by the tumor cells, without even partly recruiting CSF, in this way accumulating actively secreted proteins or necrotic degradation products.

When assuming a mixture of CSF and secreted fluid in the cyst, the missing CSF proteins could be tumor suppressors that have been down-regulated during malignant glioma progression.<sup>15</sup> For identification of these proteins, comparison of glioblastoma cyst fluid with spinal CSF from the same patient will be needed.



The immunohistologic detection of a strong expression of basigin and ferritin in the cyst wall, together with a weak staining for MT in the same tissue specimen, supports the hypothesis of active synthesis and secretion of proteins by tumor cells (Fig. 2). It remains unsolved whether the proteins are synthesized by cells residing in the cyst wall or whether the proteins diffuse into the cells from the cyst lumen by pinocytosis or are driven by a pressure gradient.

Basigin is a 40 201 Da membrane protein with isoelectric point at 5.34, which is coded on chromosome 19p13.3. It constitutes the CD147 immunoglobulin for the Ok blood group, plays a role in neural network formation, and is expressed in vascular endothelium of healthy brain. Interestingly, it has been found in the cells of glioma and medulloblastoma, but not in the proliferating vessels of malignant glioma.<sup>16,17</sup> Its properties as extracellular matrix metalloproteinase inducer (EMMPRIN) can facilitate metastatic spread of tumor cells and increase resistance against chemotherapy.<sup>9,18</sup> Therapeutic experiments with antisense RNA and antibodies have shown first promising results.<sup>19,20</sup> Since the peak was detected when comparing cyst fluids from recurrent glioblastoma with fluids from glioblastoma, there seems to be a connection between basigin and tumor cells escaping the treatment.

The light chain of ferritin is a cytosolic 19 889 Da protein with isoelectric point at 5.52 and encoded on chromosome 19q13.33. Together with ferritin heavy chains, a 24-oligomer is formed that stores iron and makes it available for metabolism. Ferritin has been described to play a role in cellular differentiation, and experiments with rat glioma cells have found a regulatory effect of insulin on its transcription.<sup>21</sup> Ferritin levels can be elevated in CSF and in serum of glioblastoma patients, and the protein was detected immunohistochemically in glioblastoma tissue.<sup>10,22</sup>

The molecular weights obtained by the SELDI-TOF analysis disclose the presence of the ferritin light chain in the cyst fluids, a similar peak including the ferritin heavy chain (21 226 Da) is absent. This suggests an altered subunit composition of the 24-oligomer or an aberrant production of ferritin light chains by glioblastoma cells. Employing selective monoclonal antibodies against the light chain or the heavy chain for immunohistologic staining, or a SELDI-TOF analysis of microdissected ferritin-positive tumor cells can help find the answer to this question.<sup>8</sup>

Metallothioneins are a group of cytosolic, cysteine-rich proteins with molecular weights around 6150 Da encoded on chromosome 16q13, which bind heavy metal ions, and have been described in glioma tissue.<sup>11</sup> A regulation of the transcription of the related genes can be exerted by heavy metal ions or

glucocorticoids. Most recently, a correlation between expression of MT 1-E with migration and invasion of glioma cell lines has been observed.<sup>23</sup> In the present study, immunohistological staining disclosed the presence of MT-1 and -2 in glioblastoma cells, which is concordant with reports on increased occurrence of MTs in higher astrocytoma grades.<sup>24</sup>

The alteration of CSF proteins in tumor patients and the presence of growth promoting factors in tumor cyst fluids have been described in a number of publications.<sup>1,7,25</sup> With the SELDI-TOF analysis it becomes possible to describe the exact molecular weight of these proteins and to search for their presence in tumor tissue by immunohistological staining.

## Conclusion

The protein content of glioblastoma cyst fluid is significantly different from that of non-tumor control CSF. The presence of basigin and ferritin in the cyst wall supports the hypothesis of synthesis and secretion of cyst proteins by malignant cells. The SELDI-TOF approach enables further description and identification of these proteins, heading towards definition of glioma biomarkers.

## Disclosure statement

We declare that we have not received any financial support in conjunction with the above submission to 'Neurological Research'. We have no conflict of interest with this submission concerning relationships, affiliations, or funding.

## References

- 1 Stockhammer G, Obwegeser A, Kostron H, Schumacher P, Muigg A, Felber S, *et al.* Vascular endothelial growth factor (VEGF) is elevated in brain tumor cysts and correlates with tumor progression. *Acta Neuropathol.* 2000;100:101–5.
- 2 Kaur G, Bloch O, Jian BJ, Kaur R, Sughrae ME, Aghi MK, *et al.* A critical evaluation of cystic features in primary glioblastoma as a prognostic factor of survival. *J Neurosurg.* 2011;115(4):754–9.
- 3 Maldaun MV, Suki D, Lang FF, Prabhu S, Shi W, Fuller GN, *et al.* Cystic glioblastoma multiforme: survival outcomes in 22 cases. *J Neurosurg.* 2004;100(1):61–7.
- 4 Utsuki S, Oka H, Suzuki S, Shimizu S, Tanizaki Y, Kondo K, *et al.* Pathological and clinical features of cystic and noncystic glioblastomas. *Brain Tumor Pathol.* 2006;23:29–34.
- 5 Choi CY, Yee GT, Lee CH, Joo M. Large cystic glioblastoma multiforme: patient surviving over 7 years without progression. *Clin Neuroradiol.* 2012 [Epub ahead of print].
- 6 Lohle PNM, Wurzer HAL, Seelen PJ, Kingma LM, Go KG. Analysis of fluid in cysts accompanying various primary and metastatic brain tumours: proteins lactate and pH. *Acta Neurochir.* 1998;104:14–9.
- 7 Westphal M, Nausch H, Herrmann HD. Cyst fluids of malignant human brain tumors contain substances that stimulate the growth of cultured human gliomas of various histological type. *Neurosurgery.* 1989;25(2):196–201.
- 8 Melle C, Ernst G, Scheibner O, Kaufmann R, Schimmel B, Bleul A, *et al.* Identification of specific protein markers in microdissected hepatocellular carcinoma. *J Proteome Res.* 2007;6:306–15.
- 9 Sameshima T, Nabeshima K, Toole BP, Yokogami K, Okada Y, Goya T, *et al.* Expression of EMMPRIN (CD147), a cell surface inducer of matrix metalloproteinases, in normal human brain and gliomas. *Int J Cancer.* 2000;88:21–7.



- 10 Sato Y, Honda Y, Asoh T, Oizumi K, Ohshima Y, Honda E. Cerebrospinal fluid ferritin in glioblastoma: evidence for tumor synthesis. *J Neurooncol.* 1998;40(1):47–50.
- 11 Floriańczyk B, Osuchowski J, Kaczmarczyk R, Starosławska E, Trojanowski T. Distribution of metallothioneins in the brain neoplastic cells. *Folia Neuropathol.* 2005;43(2):91–6.
- 12 Szymaś J, Morkowski S, Tokarz F. Determination of the glial fibrillary acidic protein in human cerebrospinal fluid and in cyst fluid of brain tumors. *Acta Neurochir.* 1986;83(3–4):144–50.
- 13 Cuddapah VA, Sontheimer H. Molecular interaction and functional regulation of CIC-3 by Ca<sup>2+</sup>/calmodulin-dependent protein kinase II (CaMKII) in human malignant glioma. *J Biol Chem.* 2010;285(15):11188–96.
- 14 Kumar DM, Thota B, Shinde SV, Prasanna KV, Hegde AS, Arivazhagan A, et al. Proteomic identification of haptoglobin  $\alpha 2$  as a glioblastoma serum biomarker: implications in cancer cell migration and tumor growth. *J Proteome Res.* 2010;9(11):5557–67.
- 15 Frattini V, Pisati F, Speranza MC, Poliani PL, Frigé G, Cantini G, et al. FOXP3, a novel glioblastoma oncosuppressor, affects proliferation and migration. *Oncotarget.* 2012;22(3):1146–57.
- 16 Chu T, Chen X, Yu J, Xiao J, Fu Z. Extracellular matrix metalloproteinase inducer is a negative prognostic factor of pediatric medulloblastoma. *Pathol Oncol Res.* 2011;17(3):705–11.
- 17 Gu J, Zhang C, Chen R, Pan J, Wang Y, Ming M, et al. Clinical implications and prognostic value of EMMPRIN/CD147 and MMP2 expression in pediatric gliomas. *Eur J Pediatrics.* 2009;168(6):705–10.
- 18 Qin Z, Dai L, Bratoveva M, Slomiany MG, Toole BP, Parsons C. Cooperative roles for emmprin and LYVE-1 in the regulation of chemoresistance for primary effusion lymphoma Leukemia. 2011;25(10):1598–609.
- 19 Kim H, Zhai G, Samuel SL, Rigell CJ, Umphrey HR, Rana S, et al. Dual combination therapy targeting DR5 and EMMPRIN in pancreatic adenocarcinoma. *Mol Cancer Ther.* 2012;11(2):405–15.
- 20 Liang Q, Xiong H, Gao G, Xiong K, Wang X, Zhao Z, et al. Inhibition of basigin expression in glioblastoma cell line via antisense RNA reduces tumor cell invasion and angiogenesis. *Cancer Biol Ther.* 2005;4(7):759–62.
- 21 Yokomori N, Iwasa Y, Aida K, Inoue M, Tawata M, Onaya T. Transcriptional regulation of ferritin messenger ribonucleic acid levels by insulin in cultured rat glioma cells. *Endocrinology.* 1991;128(3):1474–80.
- 22 Liu YF, Li Q, Yang P, Wang WL, Liu JA. Ferritin in astrocytomas. *Chin Med J (Engl).* 1991;104(4):326–9.
- 23 Ryu HH, Jung S, Jung TY, Moon KS, Kim IY, Jeong YI, et al. Role of metallothionein 1E in the migration and invasion of human glioma cell lines. *Int J Oncol.* 2012;41(4):1305–13.
- 24 Hiura T, Khalid H, Yamashita H, Tokunaga Y, Yasunaga A, Shibata S. Immunohistochemical analysis of metallothionein in astrocytic tumors in relation to tumor grade, proliferative potential, and survival. *Cancer.* 1998;83:2361–9.
- 25 Rao ML, Böker DK. Cerebrospinal fluid and serum levels of albumin, IgG, IgA and IgM in patients with intracranial tumors and lumbar disc herniation. *Eur Neurol.* 1987;26(4):241–5.