

**ORIGINAL INVESTIGATION**

**Open Access**

# Obesity and high waist circumference are associated with low circulating pentraxin-3 in acute coronary syndrome

Rocco Barazzoni<sup>1\*</sup>, Aneta Aleksova<sup>2</sup>, Cosimo Carriere<sup>2</sup>, Maria Rosa Cattin<sup>1</sup>, Michela Zanetti<sup>1</sup>, Pierandrea Vinci<sup>1</sup>, Davide Stolfo<sup>2</sup>, Gianfranco Guarnieri<sup>1</sup> and Gianfranco Sinagra<sup>2</sup>

## Abstract

**Background:** Long pentraxin 3 (PTX3) is a component of the pentraxin superfamily and a potential marker of vascular damage and inflammation, associated with negative outcome in patients with acute coronary syndromes (ACS). Obesity is a risk factor for cardiovascular disease and PTX3 production is reported in abdominal adipose tissue. Low PTX3 is however reported in the obese population, and obesity per se may be associated with less negative ACS outcome.

**Methods:** We investigated the potential impact of obesity and high waist circumference (reflecting abdominal fat accumulation) on plasma PTX3 concentration in ACS patients (n = 72, 20 obese) compared to age-, sex- and BMI-matched non-ACS individuals.

**Results:** Both obese and non-obese ACS patients had higher PTX3 than matched non-ACS counterparts, but PTX3 was lower in obese than non-obese individuals in both groups (all  $P < 0.05$ ). PTX3 was also lower in ACS subjects with high than in those with normal waist circumference (WC). Plasma PTX3 was accordingly associated negatively with BMI and WC, independently of age and plasma creatinine. No associations were observed between PTX3 and plasma insulin, glucose or the short pentraxin and validated inflammation marker C-reactive protein, that was higher in ACS than in non-ACS individuals independently of BMI or WC.

**Conclusions:** Obesity is associated with low circulating PTX3 in ACS. This association is also observed in the presence of abdominal fat accumulation as reflected by elevated waist circumference. Low PTX3 is a novel potential modulator of tissue damage and outcome in obese ACS patients.

**Keywords:** Obesity, Pentraxin-3, Acute coronary syndrome

## Introduction

The pentraxin superfamily includes short and long components [1,2]. C-reactive protein is a liver-synthesized short pentraxin and a strongly validated marker of systemic inflammation [1-3]. Long pentraxins are however synthesized by various cell types and may differentially modulate the inflammatory response under different clinical conditions [1-3]. In particular, long pentraxin 3 (PTX3) may be secreted by adipocytes under pro-inflammatory stimuli and it has been proposed as a

clinical marker of vascular damage [1,2]. Plasma PTX3 was accordingly reported to be elevated in patients with arterial stiffness [4] and subclinical [5] or unstable atherosclerotic lesions [6], and high circulating PTX3 is observed in acute coronary syndromes (ACS) [7,8]. In ACS patients, higher PTX3 was also remarkably associated with negative outcome in terms of subsequent events and overall survival [9,10]. Despite its clinical relevance, factors modulating circulating PTX3 in ACS remain however incompletely defined.

Obesity is an independent risk factor for coronary artery disease and ACS, but obesity per se has been paradoxically associated with improved prognosis in ACS patients [11,12]. In the general population [4,13] and in

\* Correspondence: barazzon@units.it

<sup>1</sup>Clinica Medica-Department of Medical, Surgical and Health Sciences  
University of Trieste, Trieste, Italy

Full list of author information is available at the end of the article

disease states including chronic kidney failure [14,15] and insulin resistance or metabolic syndrome [16-19], low plasma PTX3 was found in most reports in obese individuals and in subjects with high waist circumference, despite high PTX3 expression in abdominal fat [20,21]. The potential interactions between obesity, abdominal fat accumulation and ACS in modulating plasma PTX3 remain to be defined. In the current study we therefore investigated the impact of obesity and waist circumference on plasma PTX3 in non-obese and obese ACS patients and in sex-, age and BMI-matched non-ACS control subjects. We hypothesized that obesity has a negative impact on circulating PTX3 in ACS, and that similar interactions are also observed between PTX3 and high waist circumference, a surrogate marker of abdominal fat accumulation. Finally, we tested the hypothesis that changes in PTX3 are unrelated to those of the short pentraxin and inflammation marker CRP in ACS patients.

## Methods and procedures

### Subjects and experimental protocol

The study conforms to the principles outlined in the Declaration of Helsinki and was approved by the institutional Ethics Committee. All patients were given detailed information on the study aims and risks and they gave written consent before enrolled. In all participants, clinical history and complete physical examination including measurements of blood pressure, body mass index (BMI) and waist circumference were collected. Obesity was defined as BMI > 30 kg/m<sup>2</sup>, while high waist circumference was defined based on Adult Treatment Panel III diagnostic criteria for metabolic syndrome (>102 or 88 cm for male and female subjects, respectively). Diagnosis of hypertension was based on blood pressure measurement (>135/85 mmHg) or antihypertensive medications; diagnosis of dyslipidemia was based on plasma triglycerides (>150 mg/dl) and HDL cholesterol (<50 or 40 mg/dl for females and males respectively) or triglyceride-lowering medications; diagnosis of type 2 diabetes was based on HbA1c >6.5% or antidiabetic medications. Exclusion criteria were clinical or laboratory evidence of liver failure or disease, renal failure (plasma creatinine above 1,5 mg/dl), cancer, chronic autoimmune and thyroid disease. Females taking hormonal estrogen therapy were also excluded from the study. No subject in either group had history or clinical or laboratory signs of systemic inflammatory disease.

### ACS

72 consecutive patients with acute coronary syndrome (50 non-obese, 22 obese) were recruited in Coronary Care Unit from the Cardiovascular Department of the Azienda Ospedaliero-Universitaria "Ospedali Riuniti" in

Trieste. ACS was diagnosed based on WHO criteria in the presence of two of the following criteria: ischemic chest pain, serial ECG modifications, troponin I elevation with subsequent reduction. For all patients, one overnight fasted blood sample was collected within 24 hours of admission. No differences in timing of sample collection occurred between non-obese and obese patients. After separation, plasma was stored at -80 C until biochemical and hormonal measurements were performed.

### Non-ACS

52 control subjects with no clinical history of coronary artery disease based on detailed history and clinical examination were also studied (33 non-obese, 19 obese). These subjects were matched to the ACS groups for age, sex, BMI, waist circumference. Overnight-fasted blood samples were collected also for control subjects. Part of the study results in a smaller study population, pertaining to the associations between obesity, ACS, insulin resistance and adipose tissue hormones have been reported elsewhere [22].

### Plasma analyses

Plasma glucose, HDL cholesterol and plasma triglycerides were measured using standard methods. Plasma insulin was measured by ELISA (Insulin Human Ultra-sensitive ELISA; DRG Instruments, Marburg, Germany). Insulin sensitivity was assessed by the validated HOMA index using the following formula:  $HOMA = (FPG * FPI) / 22.5$ , where FPG and FPI are fasting plasma glucose (mmol) and fasting plasma insulin ( $\mu$ U/ml) respectively [20]. Plasma pentraxin-3 (PTX3) (Human Pentraxin3/TSG-14ELISA System Perseus Proteomics Inc., Tokyo, Japan) and C-reactive protein (CRP) (High sensitivity c-reactive protein, Diagnostics Biochem Canada Inc London, Ontario, Canada) were measured using commercially available ELISA kit.

### Statistical analysis

The StatView software (SAS Institute, Cary, NC, USA) was used for statistical analyses. Normality Tests were run to assess data distribution. Comparisons between ACS patients and non-ACS control subjects were made by unpaired Student's t-test or Wilcoxon test for non-parametric analyses in variables with non-normal distribution (PTX3, HOMA-IR and CRP). To assess differences between obese and non-obese ACS and non-ACS patients, ANOVA or Kruskal-Wallis test for non-parametric variables were used. Linear regression analysis was used to determine associations between PTX3 and different study variables that are potentially involved in its regulation. Multiple regression analysis was then used to investigate potential independent

associations between groups of statistically related variables. Due to non-normal distribution, log-transformed values for PTX3, HOMA-IR and CRP were used for regression analyses, and log-transformed PTX3 was used as dependent variable in multiple regression analyses. All data are reported as Mean  $\pm$  Standard Deviation and range, unless stated otherwise. P values of less than 0.05 were considered statistically significant.

## Results

### Clinical characteristics, metabolic and hormonal profile

ACS and non-ACS patients were comparable for sex, age, BMI, waist circumference, prevalence of hypertension and dyslipidemia, type 2 diabetes, blood pressure, lipid profile, plasma glucose and HOMA insulin resistance index. Plasma C-reactive protein and PTX3 were higher in the whole ACS group than in non-ACS patients (Table 1).

### Obesity, waist circumference and PTX3

Both non-obese and obese subjects with ACS had higher PTX3 compared to matched control subjects ( $P < 0.05$ ). PTX3 was however lower in obese than in non-obese individuals in both ACS (Non-Obese:  $8.4 \pm 0.9$ , Obese:  $4.8 \pm 0.1$  nmol/ml,  $P = 0.02$ ) and non-ACS group (Non-Obese:  $3.2 \pm 0.1$ , Obese:  $2.5 \pm 0.1$ ,  $P = 0.04$ ) (Figure 1a). Similarly, when subjects were divided into two groups with high or normal waist circumference according to ATP III classification (Males: WC  $> 102$  cm, Females: WC  $> 88$  cm), PTX3 was lower in high- than in normal-waist circumference individuals in both ACS (Normal WC:  $8.7 \pm 1.1$ , High WC:  $5.6 \pm 0.24$  nmol/ml,  $P = 0.046$ ) and non-ACS group (Normal WC:  $3.3 \pm 0.14$ , High WC:  $2.6 \pm 0.1$  nmol/ml,  $P = 0.03$ ) (Figure 1b).

### Linear regression analysis between PTX3 and anthropometric and biochemical variables in all ACS subjects

In all ACS subjects ( $n = 72$ ) PTX3 was associated positively with age and plasma creatinine. Consistent with the impact of obesity and waist circumference on PTX3, plasma PTX3 was associated negatively with BMI and WC (Figure 2), and both associations were independent of age and plasma creatinine in multiple regression analysis (Tables 2, 3). No statistically significant associations were instead observed between PTX3 and total and HDL-cholesterol, triglycerides, blood pressure, plasma glucose, insulin and HOMA insulin resistance index (Table 2), despite higher insulin and HOMA index in obese compared to non-obese subjects in both ACS and control groups ( $P < 0.05$ ). Similar associations of PTX3 were observed in the control group alone (BMI:  $r = -0.32$ ,  $P = 0.04$ , WC:  $r = -0.22$ ,  $P = 0.08$ ). When all patients and control subjects were considered together,

**Table 1 Clinical and biochemical profile**

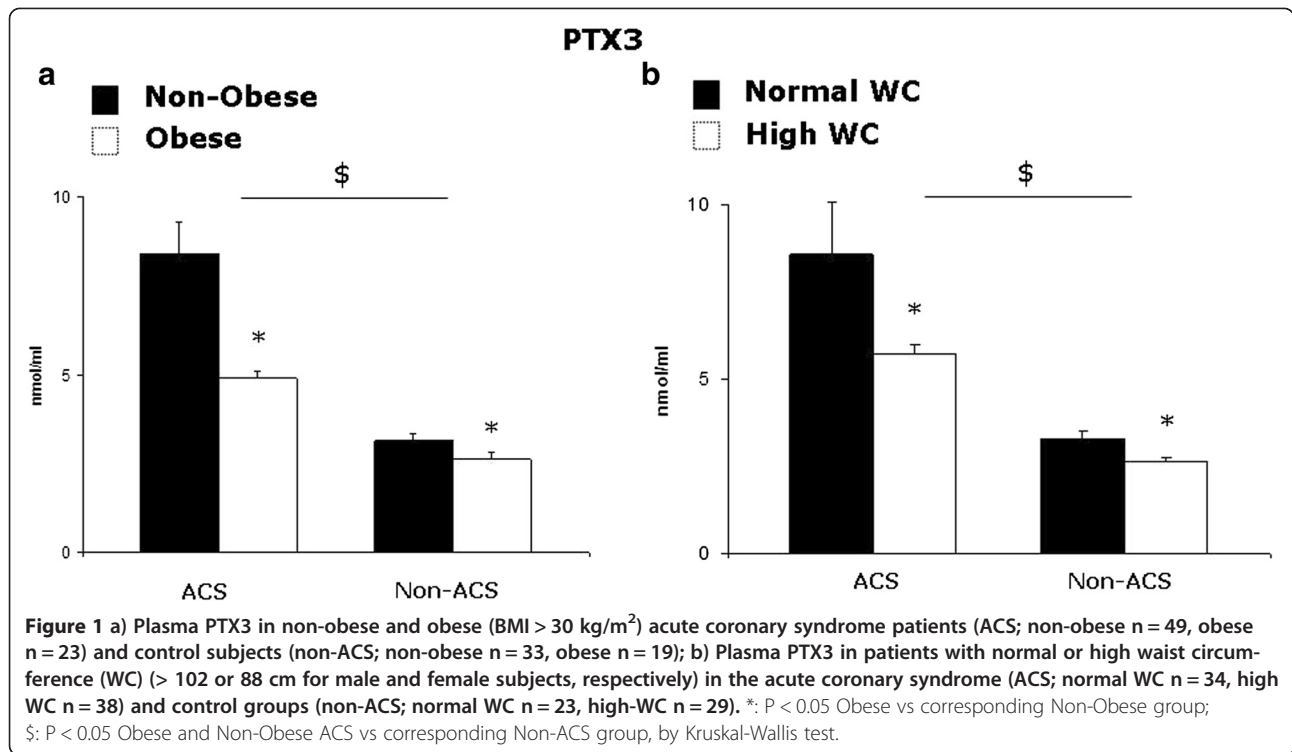
	ACS	Control
Gender (M/F)	60/12	44/8
Age (years)	$63 \pm 10$ (42–85)	$62 \pm 5$ (54–73)
BMI (kg/m <sup>2</sup> )	$27.5 \pm 3.8$ (20.6–40.8)	$27.9 \pm 3.6$ (21.6–40.5)
WC (cm)	$101 \pm 10$ (70–137)	$100 \pm 9$ (80–118)
Prevalence (%)		
Hypertension	68	62
Dyslipidemia	70	62
Type 2 Diabetes	16	12
Medications (%)		
ACE-Inhib or ARB	48	42
Ca-Channel Blocker	18	20
Beta-Blockers	44	38
Diuretics	16	20
Statins	34	30
ASA	38	24
SBP (mmHg)	$131 \pm 18$ (95–175)	$136 \pm 16$ (115–165)
DBP (mmHg)	$72 \pm 10$ (55–100)	$76 \pm 6$ (70–95)
Creat (mg/dl)	$1.01 \pm 0.28$ (0.55–1.5)	$0.92 \pm 0.20$ (0.60–1.4)
Tg (mg/dl)	$126 \pm 65$ (44–585)	$146 \pm 35$ (110–289)
T-Chol (mg/dl)	$191 \pm 42$ (81–316)	$215 \pm 41$ (127–261)
HDL-Chol (mg/dl)	$45 \pm 8$ (24–85)	$48 \pm 8$ (32–65)
Glucose (mg/dl)	$121 \pm 26$ (60–221)	$114 \pm 10$ (86–131)
Insulin ( $\mu$ U/ml)	$4.6 \pm 2.4$ (1.5–12)	$5.4 \pm 3.3$ (1.2–15.4)
HOMA-IR	$1.45 \pm 0.95$ (0.3–4.8)	$1.50 \pm 0.96$ (0.5–3.8)
CK (mU/ml)	124 (8.4–888)	-
Troponin (ng/ml)	14.6 (0.5–326)	-
CRP (mg/dl)	2 (0.2–15)	0.2 (0.02–3.1)*
PTX3 (ng/ml)	5.7 (1.8–29.3)	2.7 (1.2–5.6)*

Gender, age, BMI, waist circumference (WC), disease prevalence, chronic medications (treatment before event for ACS); ACE-Inhib: Angiotensin Converting Enzyme-Inhibitors; ARB: Angiotensin Receptor Blockers; ASA: Acetylsalicylic Acid; systolic (SBP) and diastolic (DBP) blood pressure, plasma creatinine (creat), triglycerides (Tg), HDL cholesterol (HDL-Chol), glucose, insulin, Homeostasis Model Assessment (HOMA), plasma C-reactive protein (CRP) and pentraxin-3 (PTX3) in ACS and Control groups. Results are reported as Mean  $\pm$  SD (Range) except for non-normally distributed HOMA-IR, CRP, PTX3, that are presented as Median (Range). \* $P < 0.05$  between ACS and Control groups by Wilcoxon test for non-normally distributed data (HOMA-IR, CRP, PTX3).

however, the correlations were no longer significant (BMI:  $r = -0.15$ ,  $P = 0.11$ , WC:  $r = -0.04$ ,  $P > 0.2$ ) likely due to different PTX3 plasma concentrations in the two groups at any given BMI level.

### Obesity, waist circumference and CRP

At variance with plasma PTX3, CRP was not lower in obese than in non-obese ACS patients ( $P > 0.2$ ). Comparable CRP plasma concentrations were also observed when patients were stratified according to waist circumference ( $P > 0.2$ ). Plasma CRP was accordingly not



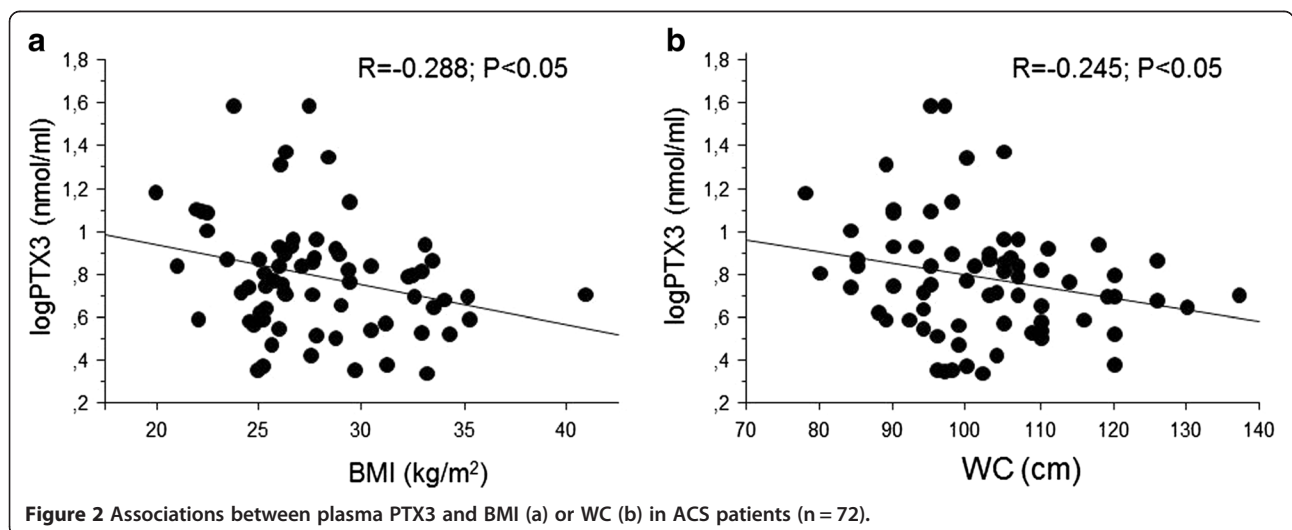
associated with BMI or WC in linear regression analysis (P > 0.2, not shown) (Figure 3).

### Discussion

In the current study we provide novel information on the impact of obesity or waist circumference on plasma PTX3 in ACS. Results demonstrate that: 1) ACS leads to plasma PTX3 elevation in both non-obese and obese patients; 2) obesity is however associated with lower PTX3 in people with and without ACS; 3) lower PTX3 is also observed in patients with normal compared to those

with high waist circumference, a marker of abdominal fat accumulation.

PTX3 is a component of the pentraxin superfamily reportedly involved in the modulation of vascular inflammation and damage [1,2]. Although the majority of available studies indicate a negative impact of obesity on plasma PTX3 in the general population and various disease states [11-18], obesity is a strong risk factor for cardiovascular events and PTX3 is commonly elevated in ACS [7-10]. The current data confirm that ACS enhances circulating PTX3, but they further demonstrate



**Table 2 Linear regression analysis between PTX3 as dependent variable and age, plasma creatinine, triglycerides, total and HDL-cholesterol, glucose, insulin, HOMA index and plasma C-reactive protein (CRP) in all ACS patients (n = 72)**

	PTX3 r
Age (years)	0.254*
Creatinine (mg/dl)	0.338*
Tg (mg/dl)	0.121
T-Chol (mg/dl)	0.075
HDL-Chol (mg/dl)	0.022
Insulin (μU/ml)	0.081
Glucose (mg/dl)	0.038
HOMA	0.048
CK (mU/ml)	0.090
Troponin (ng/ml)	0.034
CRP (mg/dl)	0.086

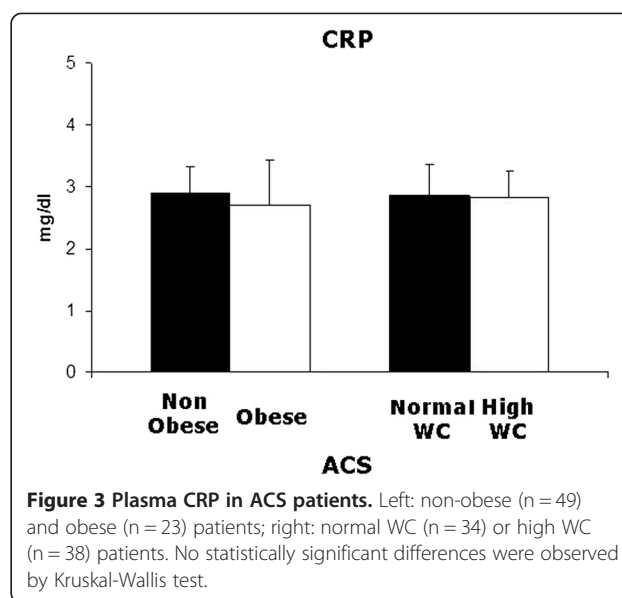
\*:P < 0.05.

that a negative impact of obesity on plasma PTX3 extends from non-ACS to ACS individuals. Lack of statistically significant associations indicates that changes in plasma lipid profile, glucose metabolism or systemic inflammation were unlikely to contribute to lower PTX3 in obese ACS patients. Since abdominal adipose tissue is a potential relevant source of PTX3 [20,21], the impact of waist circumference on plasma PTX3 was also directly investigated, and a negative association was also observed in ACS between waist circumference and PTX3. Low PTX3 production in abdominal adipose tissue could therefore be, at least in part, paradoxically responsible for lower PTX3 plasma concentration in ACS patients with high waist circumference. As an alternative explanation, obesity and abdominal fat accumulation could lower PTX3 production in other cell types through yet unidentified signalling and mechanisms, that should be investigated in future studies.

**Table 3 Multiple regression analyses between PTX3 (dependent variable) and variables associated with PTX3 in linear regression analysis: age, plasma creatinine, BMI (independent variables), in all ACS patients (n = 72)\*: P < 0.05; \*\*: P < 0.01**

	PTX3	
	β value	STD Error
Age	0.004	0.003
Creatinine	0.162**	0.008
BMI	-0.016*	0.057

Similar results were observed when WC was used instead of BMI (not shown). \*:P < 0.05.



**Figure 3 Plasma CRP in ACS patients.** Left: non-obese (n = 49) and obese (n = 23) patients; right: normal WC (n = 34) or high WC (n = 38) patients. No statistically significant differences were observed by Kruskal-Wallis test.

Higher PTX3 is associated with negative outcome in ACS, and the current results therefore suggest that less pronounced PTX3 elevation may contribute to positively modulate outcome and survival in obese ACS patients [7-10]. The association between PTX3 and negative outcome had been originally proposed to involve direct negative effects of PTX3 in cardiac and vascular tissues [7]. Strong emerging evidence however indicates that PTX3 elevation may represent an adaptive, anti-inflammatory response to pre-existing vascular damage [23,24], and this concept is also supported by differential changes of pro-inflammatory short pentraxin CRP and PTX3 in ACS in the current study. More pronounced tissue damage, rather than PTX3 elevation per se, could therefore be directly responsible for negative outcome in ACS patients with highest PTX3. Potential BMI-dependent characteristics of cardiovascular lesions should be directly investigated in obese ACS patients, along with their potential impact on PTX3.

Limitations of the present study should be acknowledged. First, factors regulating PTX3 production and plasma concentration remain largely unknown, and the current cross-sectional study design in vivo could not directly address potential mechanisms underlying altered circulating PTX3, that should be investigated in experimental models. The potential interaction between obesity, PTX3 and ACS outcome and survival will also need to be investigated and confirmed in future studies. Finally, we selected to base the diagnosis of diabetes on HbA1c levels, since plasma glucose could have been acutely affected by metabolic changes induced ACS per se. The current findings however indicate a novel link between obesity and plasma PTX3 in ACS, and understanding the underlying mechanisms will likely lead to

novel potential prevention and treatment strategies to improve ACS prognosis in both obese and non-obese patients.

## Conclusion

In conclusion, we demonstrated a negative impact of obesity on circulating PTX3 in ACS patients. A similar negative impact was also observed for elevated waist circumference, a surrogate marker of abdominal fat accumulation. These effects do not extend to the short pentraxin and validated inflammation marker CRP, whose plasma concentrations were not reduced in obese ACS patients. Low PTX3 is a novel potential modulator of tissue damage and outcome in obese ACS patients.

## Competing interests

The authors declare that they have no competing interests.

## Authors' contributions

RB designed the study, participated in data analyses and drafted the manuscript; AA contributed to design the study, recruited patients, participated in data analyses and in drafting the manuscript; CC recruited patients, participated in data analyses and keeping the patient database; MRC, MZ and PV recruited patients and participated in data analyses and discussion; DS recruited patients, participated in statistical analyses; GG participated in drafting the manuscript; GS designed the study and drafted the manuscript. All authors read and approved the final manuscript.

## Acknowledgements

The authors are grateful to the nurses of Coronary Care Unit in the Division of Cardiology of Trieste Hospital for blood sampling.

## Funding

Project co-financed by the European Regional Development Fund under the Regional Operational Programme of Friuli Venezia Giulia - Objective "Regional Competitiveness and Employment" 2007/2013.

## Author details

<sup>1</sup>Clinica Medica-Department of Medical, Surgical and Health Sciences University of Trieste, Trieste, Italy. <sup>2</sup>Cardiovascular Department, "Ospedali Riuniti" and University of Trieste, Trieste, Italy.

Received: 16 September 2013 Accepted: 6 November 2013

Published: 11 November 2013

## References

- Garlanda C, Bottazzi B, Moalli F, Deban L, Molla F, Latini R, Mantovani A: Pentraxins and atherosclerosis: the role of PTX3. *Curr Pharm Des* 2011, **17**:38–46.
- Norata GD, Garlanda C, Catapano AL: The long pentraxin PTX3: a modulator of the immunoinflammatory response in atherosclerosis and cardiovascular diseases. *Trends Cardiovasc Med* 2010, **20**:35–40.
- Huang JW, Yang CY, Wu HY, Liu KL, Su CT, Wu CK, Lee JK, Chiang CK, Cheng HT, Lien YC, Hung KY: Metabolic syndrome and abdominal fat are associated with inflammation, but not with clinical outcomes, in peritoneal dialysis patients. *Cardiovasc Diabetol* 2013, **12**:86.
- Miyaki A, Maeda S, Choi Y, Akazawa N, Eto M, Tanaka K, Ajisaka R: Association of plasma pentraxin 3 with arterial stiffness in overweight and obese individuals. *Am J Hypertens* 2013, **26**:1250–1255.
- Zanetti M, Bosutti A, Ferreira C, Vinci P, Biolo G, Fonda M, Valente M, Cattin L, Guarnieri G, Barazzoni R: Circulating pentraxin 3 levels are higher in metabolic syndrome with subclinical atherosclerosis: evidence for association with atherogenic lipid profile. *Clin Exp Med* 2009, **9**:243–248.
- Koga S, Ikeda S, Yoshida T, Nakata T, Takeno M, Masuda N, Koide Y, Kawano H, Maemura K: Elevated levels of systemic pentraxin 3 are associated with thin-cap fibroatheroma in coronary culprit lesions: assessment by optical coherence tomography and intravascular ultrasound. *JACC Cardiovasc Interv* 2013, **6**:945–954.
- Peri G, Introna M, Corradi D, Iacuitti G, Signorini S, Avanzini F, Pizzetti F, Maggioni AP, Moccetti T, Metra M, Cas LD, Ghezzi P, Sipe JD, Re G, Olivetti G, Mantovani A, Latini R: PTX3, a prototypical long pentraxin, is an early indicator of acute myocardial infarction in humans. *Circulation* 2000, **102**:636–641.
- Egger KM, Armstrong PW, Califf RM, Johnston N, Simoons ML, Venge P, James SK: Clinical and prognostic implications of circulating pentraxin 3 levels in non ST-elevation acute coronary syndrome. *Clin Biochem* 2013. doi: 10.1016/j.clinbiochem.2013.08.014.
- Latini R, Maggioni AP, Peri G, Gonzini L, Lucci D, Mocarelli P, Vago L, Pasqualini F, Signorini S, Soldateschi D, Tarli L, Schweiger C, Fresco C, Cecere R, Tognoni G, Mantovani A, Lipid Assessment Trial Italian Network (LATIN) Investigators: Prognostic significance of the long pentraxin PTX3 in acute myocardial infarction. *Circulation* 2004, **110**:2349–2354.
- Matsui S, Ishii J, Kitagawa F, Kuno A, Hattori K, Ishikawa M, Okumura M, Kan S, Nakano T, Naruse H, Tanaka I, Nomura M, Hishida H, Ozaki Y: Pentraxin 3 in unstable angina and non-ST-segment elevation myocardial infarction. *Atherosclerosis* 2010, **210**:220–225.
- Nikolsky E, Stone GW, Grines CL, Cox DA, Garcia E, Tcheng JE, Griffin JJ, Guagliumi G, Stuckey T, Turco M, Negoita M, Lansky AJ, Mehran R: Impact of body mass index on outcomes after primary angioplasty in acute myocardial infarction. *Am Heart J* 2006, **151**:168–175.
- Buettner HJ, Mueller C, Gick M, Ferenc M, Algeier J, Comberg T, Werner KD, Schindler C, Neumann FJ: The impact of obesity on mortality in UA/non-ST-segment elevation myocardial infarction. *Eur Heart J* 2007, **28**:1694–1701.
- Orosio-Conles O, Guitart M, Chacón MR, Maymo-Masip E, Moreno-Navarrete JM, Montori-Grau M, Näf S, Fernandez-Real JM, Vendrell J, Gómez-Foix AM: Plasma PTX3 protein levels inversely correlate with insulin secretion and obesity, whereas visceral adipose tissue PTX3 gene expression is increased in obesity. *Am J Physiol Endocrinol Metab* 2011, **301**:E1254–E1261.
- Suliman ME, Qureshi AR, Carrero JJ, Bárány P, Yilmaz MI, Snaedal-Jonsdottir S, Alvestrand A, Heimbürger O, Lindholm B, Stenvinkel P: The long pentraxin PTX-3 in prevalent hemodialysis patients: associations with comorbidities and mortality. *QJM* 2008, **101**:397–405.
- Miyamoto T, Rashid Qureshi A, Heimbürger O, Bárány P, Carrero K, Sjöberg B, Lindholm B, Stenvinkel P, Carrero JJ: Inverse relationship between the inflammatory marker pentraxin-3, fat body mass, and abdominal obesity in end-stage renal disease. *Clin J Am Soc Nephrol* 2011, **6**:2785–2791.
- Ogawa T, Kawano Y, Imamura T, Kawakita K, Sagara M, Matsuo T, Kakitsubata Y, Ishikawa T, Kitamura K, Hatakeyama K, Asada Y, Kodama T: Reciprocal contribution of pentraxin 3 and C-reactive protein to obesity and metabolic syndrome. *Obesity* 2010, **18**:1871–1874.
- Yamasaki K, Kurimura M, Kasai T, Sagara M, Kodama T, Inoue K: Determination of physiological plasma pentraxin 3 (PTX3) levels in healthy populations. *Clin Chem Lab Med* 2009, **47**:471–477.
- Chu SH, Park JH, Lee MK, Jekal Y, Ahn KY, Chung JY, Lee DH, Kim ES, Naruse M, Im JA, Kong ID, Chung CH, Lee JW, Chung KM, Kim YB, Jeon JY: The association between pentraxin 3 and insulin resistance in obese children at baseline and after physical activity intervention. *Clin Chim Acta* 2012, **413**:1430–1437.
- Aydogdu A, Tasci I, Tapan S, Basaran Y, Aydogan U, Meric C, Sonmez A, Aydogdu S, Akbulut H, Taslipinar A, Uckaya G, Azal O: High plasma level of long Pentraxin 3 is associated with insulin resistance in women with polycystic ovary syndrome. *Gynecol Endocrinol* 2012, **28**:722–725.
- Abderrahim-Ferkoune A, Bezy O, Chiellini C, Maffei M, Grimaldi P, Bonino F, Moustaid-Moussa N, Pasqualini F, Mantovani A, Ailhaud G, Amri EZ: Characterization of the long pentraxin PTX3 as a TNFalpha-induced secreted protein of adipose cells. *J Lipid Res* 2003, **44**:994–1000.
- Alberti L, Gilardini L, Zulian A, Micheletto G, Peri G, Doni A, Mantovani A, Invitti C: Expression of long pentraxin PTX3 in human adipose tissue and its relation with cardiovascular risk factors. *Atherosclerosis* 2009, **202**:455–460.
- Barazzoni R, Aleksova A, Armellini I, Cattin MR, Zanetti M, Carriere C, Giacca M, Dore F, Guarnieri G, Sinagra G: Adipokines, ghrelin and obesity-associated insulin resistance in nondiabetic patients with acute coronary syndrome. *Obesity* 2012, **20**:2348–2353.

23. Salio M, Chimenti S, De Angelis N, Molla F, Maina V, Nebuloni M, Pasqualini F, Latini R, Garlanda C, Mantovani A: **Cardioprotective function of the long pentraxin PTX3 in acute myocardial infarction.** *Circulation* 2008, **117**:1055–1064.
24. Norata GD, Marchesi P, Pulakazhi Venu VK, Pasqualini F, Anselmo A, Moalli F, Pizzitola I, Garlanda C, Mantovani A, Catapano AL: **Deficiency of the long pentraxin PTX3 promotes vascular inflammation and atherosclerosis.** *Circulation* 2009, **120**:699–708.

doi:10.1186/1475-2840-12-167

**Cite this article as:** Barazzoni *et al.*: Obesity and high waist circumference are associated with low circulating pentraxin-3 in acute coronary syndrome. *Cardiovascular Diabetology* 2013 **12**:167.

**Submit your next manuscript to BioMed Central  
and take full advantage of:**

- Convenient online submission
- Thorough peer review
- No space constraints or color figure charges
- Immediate publication on acceptance
- Inclusion in PubMed, CAS, Scopus and Google Scholar
- Research which is freely available for redistribution

Submit your manuscript at  
[www.biomedcentral.com/submit](http://www.biomedcentral.com/submit)

