

## Erratum

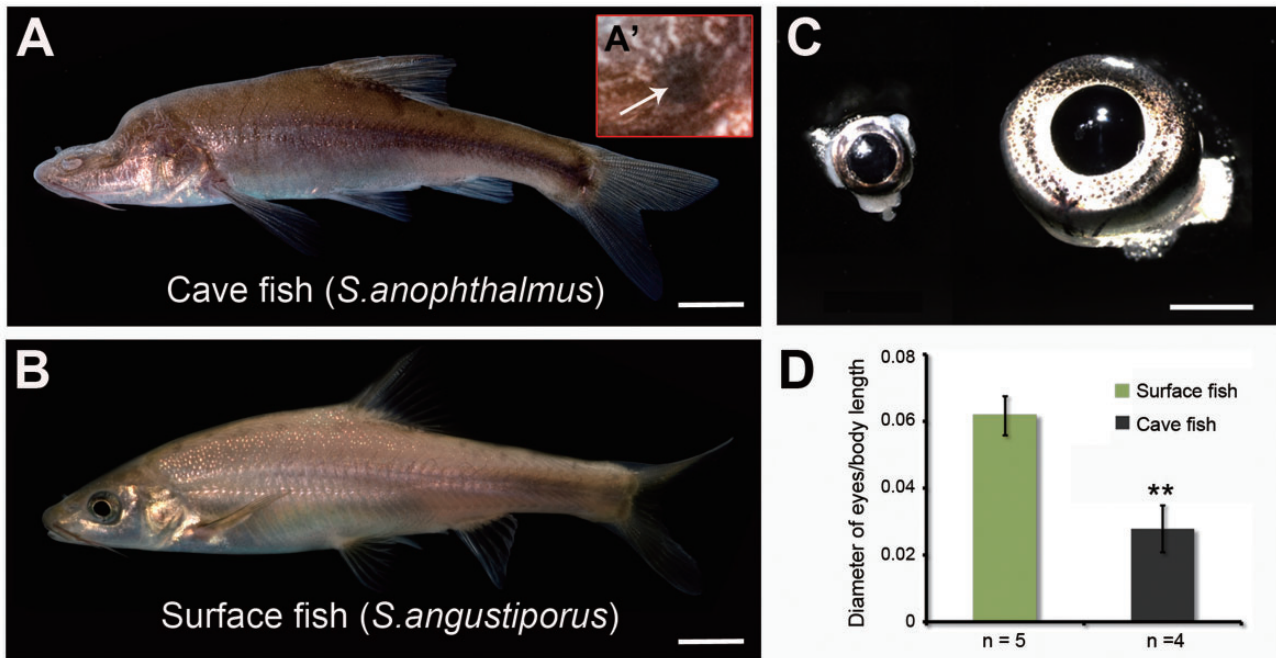
doi:10.1093/molbev/mst146

### Evolution of the Eye Transcriptome under Constant Darkness in *Sinocyclocheilus* Cavefish

Fanwei Meng, Ingo Braasch, Jennifer B. Phillips, Xiwen Lin, Tom Titus, Chunguang Zhang, and John H. Postlethwait

Mol. Biol. Evol. 30(7):1527–1543. 2013 doi:10.1093/molbev/mst079

The figure part labels for figure 1 were incorrect. The correct figure part labels appear on the figure below (with original caption). The publisher regrets the error.



**FIG. 1.** Cavefish phenotypes. Cavefish *Sinocyclocheilus anophthalmus* (A) and surface fish *S. angustiporus* (B). Cavefish have no external eyes (A), but they have internal eyes (A' and C, left) that are much smaller than the external eyes of their surface fish relatives (C, right). (D) Comparison of eye diameter normalized with total fish body length including the caudal fin. Values expressed as mean  $\pm$  SD, \*\*,  $P < 0.01$ . Scale bar in (A and B): 1 cm; (C): 2 mm.