



# HHS Public Access

Author manuscript

*Nat Commun.* Author manuscript; available in PMC 2014 May 26.

Published in final edited form as:

*Nat Commun.* 2013 ; 4: 2841. doi:10.1038/ncomms3841.

## Stepwise histone modifications are mediated by multiple enzymes that rapidly associate with nascent DNA during replication

Svetlana Petruk<sup>1</sup>, Kathryn L. Black<sup>1</sup>, Sina K. Kovermann<sup>2</sup>, Hugh W. Brock<sup>2</sup>, and Alexander Mazo<sup>1,4</sup>

<sup>1</sup>Department of Biochemistry and Molecular Biology and Kimmel Cancer Center, Thomas Jefferson University, 1020 Locust Street, Philadelphia, PA 19107, USA

<sup>2</sup>Department of Zoology, University of British Columbia, 6270 University Boulevard, V6T 1Z4, Vancouver, BC, Canada

### Abstract

The mechanism of epigenetic inheritance following DNA replication may involve dissociation of chromosomal proteins from parental DNA and reassembly on daughter strands in a specific order. Here we investigated the behavior of different types of chromosomal proteins using newly developed methods that allow assessment of the assembly of proteins during DNA replication. Unexpectedly, most chromatin-modifying proteins tested, including methylases, demethylases, acetyltransferases and a deacetylase, are found in close proximity to PCNA or associate with short nascent DNA. Histone modifications occur in a temporal order following DNA replication, mediated by complex activities of different enzymes. In contrast, components of several major nucleosome remodeling complexes are dissociated from parental DNA, and are later recruited to nascent DNA following replication. Epigenetic inheritance of gene expression patterns may require many aspects of chromatin structure to remain in close proximity to the replication complex followed by re-assembly on nascent DNA shortly after replication.

### INTRODUCTION

Currently, it is not known how the status of gene expression is propagated through S and M phases when major changes to chromatin architecture occur. Re-establishment of parental chromatin structure on nascent DNA of future daughter cells in S phase may occur by a two-step mechanism in which most proteins and nucleosomes dissociate from DNA<sup>1</sup>, but a few molecules can quickly re-associate with DNA following replication. Such proteins or

Users may view, print, copy, download and text and data- mine the content in such documents, for the purposes of academic research, subject always to the full Conditions of use: [http://www.nature.com/authors/editorial\\_policies/license.html#terms](http://www.nature.com/authors/editorial_policies/license.html#terms)

<sup>4</sup>Author for correspondence Alexander.Mazo@jefferson.edu.

#### Author Contributions

S.P., A.M and H.W.B. designed the study, analyzed the data and wrote the paper. S.P. performed experiments shown in figures 1, 2, 3, 6 and S1, K.L.B. performed experiments shown in figures 4, 5 and 7. S.K.K. assisted in experiments shown in figure 4b–d. All authors discussed the results and commented on the manuscript.

**Competing Financial Interests:** The authors declare no competing financial interests.

modifications may play an epigenetic role if they mark specific regulatory DNA sequences and then trigger association of the rest of the components of chromatin, probably in a specific order. This would lead to re-establishment of chromatin environment in the regulatory regions of the genes, and allow reconstitution of the gene expression status in daughter cell<sup>2,3</sup>.

Until recently, this model of chromatin assembly remained untested *in vivo*, because there were no experimental approaches to examine the behavior of chromosomal proteins other than histones at the time of, and shortly after the passage of the DNA replication complex *in vivo*. We recently developed several *in vivo* approaches to examine the proximity of chromosomal proteins to PCNA during replication and the time of their recruitment to nascent DNA following replication<sup>4</sup>. Using these new tools in *Drosophila* embryos, we found that TrxG and PcG proteins TRX and E(z), H3K4 and H3K27 histone-methyltransferases (HMTs), respectively, and PC, a component of the PRC1 complex, associate with their response elements (TREs and PREs) during DNA replication *in vivo*<sup>4</sup>. These results are in agreement with a previous study showing that several components of the PRC1 complex are stably bound to DNA in the *in vitro* replication assays<sup>5,6</sup>, and that these proteins are associated *in vivo* with relatively short stretches of nascent DNA<sup>5</sup>. Surprisingly, H3K4me3 and H3K27me3 are not detected in proximity to PCNA or nascent daughter strands of DNA, and initial accumulation of these methyl marks on H3 was detected only following S phase<sup>4</sup>.

Together, these studies suggest that some TrxG and PcG proteins may function to re-establish active or repressing chromatin environments due to their ability to remain in close proximity to PCNA, or be rapidly recruited to nascent DNA following replication. These findings raise three essential questions: Firstly, can other chromosomal proteins remain in proximity to PCNA or on nascent DNA following replication? Secondly, why are some histone modifications delayed despite the early presence of histone-modifying enzymes on nascent DNA? Thirdly, what is the order of recruitment of chromosomal proteins to daughter DNA after replication? These issues are particularly important for proteins that are involved in changing the structure of chromatin, some of which are characterized genetically as members of the TrxG and PcG of epigenetic regulators<sup>7,8</sup>, but also include other chromatin modifiers or nucleosome remodelers.

In this study we show that most chromatin modifying enzymes, but not subunits of chromatin remodeling complexes, are found in close proximity to PCNA and nascent DNA shortly after DNA replication. We conclude that epigenetic inheritance of gene expression patterns requires that multiple molecules remain in close proximity to the replication complex.

## RESULTS

### Examining post-replicative protein assembly by PLA and CAA

To address these questions we used two assays to survey the behavior of several groups of histone-modifying and nucleosome remodeling proteins during DNA replication in *Drosophila* embryos. To examine whether tested proteins are in close proximity to PCNA in

the DNA replication complex or bound to DNA following replication we used the Proximity Ligation Assay (PLA, Olink, Bioscience). The results of PLA were found previously to be in excellent correlation with physical association of TRX, E(z) and PC, with the same DNA fragments as PCNA as detected in sequential re-ChIP assays<sup>4</sup>. Extensive characterization of these re-ChIP assays revealed that these proteins bind to their specific binding DNA sites, TREs and PREs, during or immediately following DNA replication<sup>4</sup>, validating the PLA assays with PCNA as a reliable source of information not only for transient presence of these proteins in close proximity to the DNA replication complex, but also for their association or close proximity to DNA during the passage of the replication complex. It should be noted that PLA is a very sensitive technique with a dynamic range that detects proximity of single molecules (Olink), and thus can detect very rare and transient interactions. For comparison, TRX and PC interactions with PCNA are easily detectable by PLA<sup>4</sup>, but we were not able to detect these interactions in co-immunoprecipitation experiments (Supplementary Fig. S1).

We also used a recently developed Chromatin Assembly Assay (CAA) that is based on labeling of nascent DNA with EdU that is subsequently chemically conjugated with biotin. The antibodies to the tested protein and biotin are then used in a PLA assay to examine proximity of this protein to nascent DNA<sup>4</sup>. The shortest time for reliable EdU labeling in *Drosophila* embryos is 4–5 min. With an average speed of DNA replication of about 40 bp per sec, and considering that EdU entering into the nucleus may require some time, 4–5 min of EdU labeling will detect less than 10 kb of nascent DNA. Previously, we showed that the results of CAA correlate completely with the results of re-ChIP and PLA assays with PCNA<sup>4</sup>. The results of this and our previous study show that all proteins that are in close proximity to PCNA are also detected in the CAA assays after 4–5 min of EdU labeling. Proteins that are not detected in these two assays are always detected after longer times of EdU labeling. Thus, simultaneous use of two complementary assays, PLA and CAA, provide a means to survey for proximity to PCNA and time of recruitment of many proteins to nascent DNA at many genomic locations. Re-ChIP assays are not practical for testing multiple proteins because they require prior identification of binding sites at specific targets, and large amounts of well characterized specific antibodies which are not always available from commercial or other sources.

### Association of ASH1 and SET1 HMTs with replicating DNA

The HMTs E(z) and TRX are in close proximity to PCNA and nascent DNA<sup>4</sup>. E(z) is the only H3K27 HMT in *Drosophila*. There are however several other H3K4 HMTs in addition to TRX, including ASH1 and dSET1. These proteins belong to different families of HMTs, and have different contributions to the overall levels of methylated H3K4 forms in different tissues<sup>9,10</sup>. Similar to TRX, dSET1 is in close proximity to PCNA (Fig. 1a; all the results on proximity of different proteins to PCNA and nascent DNA are summarized in Table 1). In CAA experiments, dSET1 is in proximity to nascent DNA labeled with EdU for 5 min. Its amount is slightly increased from 10 min to 2 hr of EdU incorporation. Contrary to TRX and dSET1, ASH1 is not found in proximity to PCNA in the PLA assay (Fig. 1b). Consistent with this, ASH1 is not detected by CAA on nascent DNA until 1 hr labeling with EdU, and its amount is slightly increased at 2 hr of EdU incorporation. The occasional PLA signals

that are seen with ASH1 in columns 1–3 (and in some figures below) do not overlap with PCNA- and EdU-labeled nuclei, and represent a typical low antibody background in the control experiments when only one of the tested antibodies is used for the PLA reaction<sup>4</sup>. In the gastrulating *Drosophila* embryos shown in this figure, the G1 phase is not detectable, S phase is about 50 min, and most transcription occurs in a G2 phase of variable length that depends on cell type<sup>11</sup>. Thus ASH1 may be recruited either during mid-S phase or transcriptional G2 interphase. These results suggest that ASH1 may not be required for maturation of chromatin immediately after replication, potentially because it has cell cycle stage-specific activity.

The presence of TRX and dSET1 on nascent DNA in the absence of H3K4me3<sup>4</sup> suggests that the H3K4 tri-methylation activity of these HMTs is delayed following replication. Since these enzymes also mono- and di-methylate H3K4 to different extents<sup>10</sup>, it is possible that H3K4me1 and H3K4me2 appear earlier than H3K4me3 after DNA replication. However, similar to H3K4me3<sup>4</sup>, H3K4me2 and H3K4me1 are not detected in the proximity to PCNA, and are detected on nascent DNA only at about 1 hr after DNA replication, with the subsequent increase at 2 hr of EdU incorporation (Fig. 2 and Table 1).

### UTX and CBP mask the activity of E(z) following replication

The preceding results suggest that the activity of HMTs may be masked by the stronger activities of the lysine demethylases that are in proximity to nascent DNA immediately after replication, and during S phase. Therefore we examined the behavior of two H3K4 demethylases during DNA replication. *Drosophila* Lid (ortholog of the mammalian Rbp-2/JARID1A and Plu-1/JARID1B) and Lsd1 are demethylases with overlapping H3K4me1/2 and H3K4me2/3 activities, respectively<sup>12–15</sup>. Both demethylases are found in proximity to PCNA and to nascent DNA labeled with EdU for 5 min (Fig. 1c,d).

The simultaneous presence and presumably stronger activities of demethylases may preclude methylation of H3K4 by HMTs until the relative activities of these antagonistic enzymes change at some time after DNA replication. It is difficult to test this idea for H3K4 given the large number of potentially redundant H3K4 HMTs and demethylases. However, for H3K27, only one HMT and one demethylase with this specificity are present in *Drosophila*. We have shown previously that H3K27 HMT E(z) is in proximity to nascent DNA after 5 min of EdU labeling, but H3K27me3 is detected only after 1 hr following labeling<sup>4</sup>. UTX is an H3K27me2/3 demethylase, an ortholog of the mammalian UTX, UTY and JmjD3<sup>16</sup>. Since UTX is also found in proximity to PCNA and nascent DNA early after DNA replication (Fig. 3a), we tested the possibility that the demethylating activity of UTX may prevent H3K27me3 accumulation on nascent DNA at early stages following DNA replication. Inhibition of the UTX activity with the recently described compound GSK J4<sup>17</sup> leads to emergence of a considerable number of PLA signals in the CAA assay between H3K27me3 and nascent DNA labeled for EdU for 15 min, while non-treated embryos show no PLA signals (Fig. 3d).

De-methylation by UTX may not be the only mechanism causing a delay in H3K27 methylation after DNA replication. Importantly, the *Drosophila* HAT CBP acetylates histone H3 at K27, and thus antagonizes methylation of the same residue by E(z)<sup>18</sup>. Thus, in

addition to de-methylation of H3K27me3 by UTX, proximity of CBP to DNA during replication may provide an additional mechanism in which acetylation of H3K27 may preclude methylation of H3K27 by E(z). *Drosophila* CBP is in close proximity to PCNA and nascent DNA labeled from 5 min to 2 hr (Fig. 3b). CBP associates with TRX in the TAC1 complex<sup>19</sup>, and also forms a complex with UTX<sup>20</sup>. Both TRX<sup>4</sup> and UTX (Fig. 3a) are associated with DNA after 5 min of EdU labeling, suggesting that CBP may be present on nascent DNA in two distinct protein complexes. H3K27ac is detectable on nascent DNA at 10 min after DNA replication (Fig. 3c). Inhibition of CBP activity with the C646 inhibitor leads to a significant decrease in H3K27ac 15 min after DNA replication (Fig. 3g), and as a potential consequence to the emergence of H3K27me3 (Fig. 3f). We also detected a loss of H3K27ac in embryos treated with UTX inhibitor (Fig. 3e), which is consistent with the proposed role of UTX in CBP activity<sup>20</sup>. In summary, our results indicate that both acetylation of H3K27 by CBP and demethylation of H3K27 by UTX may prevent accumulation of H3K27me3 at early stages following DNA replication (scheme in Fig. 3h). It is possible that upregulation of the activity of E(z) and/or diminishing activities of CBP and UTX contribute to accumulation of H3K27me3 at the completion of the S phase<sup>4</sup>. At this time (1 and 2 hr of EdU labeling), the presence of both H3K27ac and H3K27me3 (Fig. 3c, Table 1 and Ref. 4) likely reflects accumulation of these histone forms in different regions of the genome.

#### HP1 may be an epigenetic mark of heterochromatin

The combination of PLA and CAA assays also allows us to test the order of recruitment of heterochromatic proteins in S phase. Methylation of H3K9 by Clr4, a *S. pombe* homologue of the *Drosophila* Su(Var)3–9, was proposed to create an epigenetic mark that is recognized by the chromo domain of the heterochromatin protein 1 (HP1) that mediates gene silencing<sup>21</sup>, providing a step-wise model for formation of the transcriptionally silent heterochromatin. Another model<sup>22</sup> suggests that HP1 is recruited to replication forks through direct interaction with histone chaperone CAF1<sup>23</sup> that is associated with PCNA. HP1 then recruits SUV39H that induces the full extent of methylation of H3K9. According to this model H3K9me3 may be transferred to daughter strands, although its role as an epigenetic mark is not clear. We show that HP1 is in proximity to PCNA and with short nascent DNA (Fig. 4a). In contrast, Su(Var)3–9 is not found in proximity to PCNA, but is found on nascent DNA in 5 min after DNA replication (Fig. 4b). H3K9me3 is detected shortly after recruitment of this enzyme, at 10 min after DNA replication (Fig. 4c). Based on these results, we propose a new order of assembly of heterochromatin in *Drosophila* (Fig. 4d). HP1, but not H3K9me3, may serve as an epigenetic mark during DNA replication. Since Su(Var)3–9 and HP1 interact and are interdependent in their localization in *Drosophila* heterochromatin<sup>24</sup>, it is possible that HP1 recruits Su(Var)3–9 shortly after the passage of the replication fork. Association of Su(Var)3–9 may lead to fast methylation of H3K9, finalizing formation of the heterochromatin. Our results do not rule out the possibility that parental H3K9me3 is demethylated, transferred to nascent DNA, and is methylated at K9 after Su(Var)3–9 is recruited.

### Arginine methyltransferases are in proximity to nascent DNA

To expand our analysis of chromatin proteins that associate with nascent DNA, we examined PRMT arginine methyltransferases that methylate numerous proteins including histones. While their epigenetic role is not well defined, their ability to methylate histones may potentially impact the epigenetic state of the gene<sup>25,26</sup>. *Drosophila* DART1 and DART4 are arginine methyltransferases (homologous to mammalian PRMT1 and PRMT4/CARM1, respectively) that catalyze formation of the asymmetrical dimethylated arginine residues in histones H4 and H3<sup>27</sup>. Similar to lysine methyltransferases, DART1 and DART4 are found in proximity to PCNA and nascent DNA labeled with EdU for 5 min (Fig. 5a,b and Table 1). Interestingly, H3R17me2 and H4R3me2, two products of these enzymes, are not associated with PCNA, and are detected at nascent DNA at different times following DNA replication (Fig. 5c,d and Table 1). In addition, pCAF, another *Drosophila* HAT protein, the histone deacetylase HDAC1 and the PcG DNA binding protein PHO are all in proximity to PCNA and nascent DNA labeled from 5 min to 2 hr (Fig. 6 and Table 1). In summary, most tested histone modifiers, chromosomal and DNA binding proteins are found in close proximity to PCNA and nascent DNA shortly after replication.

### Chromatin remodelers are dissociated during DNA replication

Chromatin remodeling complexes are essential for gene regulation<sup>28,29</sup>, so we examined the behavior of subunits of chromatin remodeling complexes during DNA replication. ISWI is the catalytic subunit of several distinct ATP-dependent chromatin remodeling complexes that play essential roles in regulation of higher-order chromatin structure<sup>30-32</sup>. Unlike most of chromatin-modifying enzymes examined above, ISWI is not in proximity to PCNA and appears on nascent DNA only after 10 min of DNA replication (Fig. 7a). The *Drosophila* TrxG protein BRM is an ATPase<sup>33</sup> present in two distinct complexes, BAP and PBAP. These complexes share seven identical subunits. The TrxG protein OSA is a component of BAP but not PBAP<sup>34</sup>. In contrast, Polybromo is a component of PBAP but not BAP<sup>35</sup>. Neither BRM nor OSA nor Polybromo are in proximity to PCNA, and they are not found at nascent DNA labeled with EdU for 5 min (Fig. 7b-d). Interestingly, while BRM and Polybromo are first detected on nascent DNA at 10 min, OSA is not detected until 2 hr of EdU incorporation (Fig. 7b-d). These results suggest that while both BAP and PBAP complexes dissociate from DNA during replication, these distinct chromatin remodeling complexes are recruited to their sites on DNA at significantly different times following DNA replication. Since the four tested proteins are components of many major chromatin-remodeling complexes (Table 1), our results suggest that chromosomal remodeling complexes are dissociated from DNA for longer periods than most histone modifying complexes.

Interestingly, a CBP complex with UTX also includes BRM<sup>20</sup>. Our results suggest that only two components of this complex, UTX and CBP, are in proximity to PCNA and nascent DNA labeled for 5 min with EdU, while BRM is associated with nascent DNA only after 10 min of EdU labeling (Figs. 3a,b and 7b). This suggests that the BRM component of the triple UTX-CBP-BRM complex is dissociated from this complex during replication. Thus, during replication CBP may exist in two complexes, with TRX and with UTX, and the BRM component of the UTX-CBP complex is recruited later after DNA replication.

## DISCUSSION

This study examines recruitment of multiple proteins to daughter DNA following DNA replication *in vivo*. The surprising finding of this work is that with the exceptions of ASH1 and Su(Var)3–9, many histone-modifying proteins that belong to several different functional groups are found in close proximity PCNA and short nascent DNA. It is likely that these proteins may be transiently dissociated and kept in the vicinity of the replication fork through interactions with PCNA or other replication proteins, and are then rapidly recruited to nascent DNA. It is also possible, that like PcG proteins, some of chromatin proteins remain associated with DNA during replication<sup>5,6</sup>. Our results suggest that modifications of histones on daughter DNA occur later after replication, and may be governed by complex activities of histone-modifying proteins associated with nascent DNA. We suggest that histone methylation by itself is unlikely to be an epigenetic mark<sup>36</sup>. Instead, we propose that many chromatin proteins are required early after DNA replication to re-establish transcriptional states.

The methods applied here allow examination of the order of assembly of chromatin. This essential step forward allowed us to examine previously proposed models of epigenetic marking and step-wise assembly of chromatin. In particular, we found that HP1 plays an essential early role in formation of heterochromatin. The timing of appearance of other key players suggest that Su(Var)3–9 may be recruited by HP1, and that methylation of H3K9 by this protein occurs shortly afterwards. These results agree with previous studies that demonstrated physical interactions between HP1 and Su(Var)3–9. Our studies establish the exact order of events following DNA replication in *Drosophila* embryos, but do not describe the molecular mechanisms.

This work (Table 1), and our previous data<sup>4</sup> show that unlike histone modifiers, modified histones are accumulated at different times after DNA replication. With the exception of the H4K5ac mark associated with newly synthesized histones, we are unable to determine whether parental, newly synthesized histones, or both are acquiring modifications in our experiments. Our data suggest the histone modification is temporally regulated. Using CAA it is now possible to functionally assess the roles of histone-modifying enzymes in temporal regulation of histone modification. In particular, we found that methylation of H3 at K27 by E(z), a hallmark of repressed genes in euchromatin, is delayed due to the activities of HAT CBP and de-HMT UTX. The antagonistic effects of these modifiers were described previously<sup>18,20</sup>. Importantly, our work places them in the context of the cell cycle and in the gradual maturation of chromatin following DNA replication.

An important result of this work is that unlike histone-modifying proteins, members of several nucleosome remodeling complexes dissociate from DNA and re-associate with nascent DNA at different times, perhaps after the end of the S phase, or are developmentally regulated. The mechanisms of recruitment of these proteins following DNA replication are not known. Chromatin remodelers are thought to be recruited to their target genes by transcription factors and modified histones, in particular acetylated nucleosomal histones<sup>37,38</sup>. The results of this and our previous work suggest that modified histones tested so far are detected on nascent DNA with various delays<sup>4</sup> (Table 1). Thus, one explanation of

the late recruitment of chromatin remodelers may stem from delays in accumulation of histone modifications that are essential to recruit these proteins. Significantly, these results suggest that chromatin remodelers do not play direct roles in maintaining epigenetic information during replication and that their roles in transcription may be significantly delayed compared to that of histone-modifying complexes.

Overall, the results of this work demonstrate that in early *Drosophila* embryos the structure of chromatin may be disrupted for only very short time by DNA replication, and that modification of histones may be a complex orderly process that follows DNA replication. They also suggest that histone modification is unlikely to be an early event in chromatin assembly on nascent DNA, or to have a causal role in assembly of specific chromatin environments. We propose that epigenetic marking during replication may require many proteins to be present soon after replication to reconstitute the chromatin environment.

## METHODS

### PLA assays

Embryos were dechorionated in 50% bleach and fixed in a 1:1 mixture of 4% formaldehyde in PBS and heptane for 20min, washed, blocked and incubated overnight at 4°C with primary antibodies from different species. PLA assays (Olink Bioscience) were performed as follows: secondary antibodies with conjugated oligonucleotides (MINUS and PLUS probes) were incubated for 1 hr at 37°C<sup>4</sup>. Two oligonucleotides that hybridize to the two PLA probes were added, and ligated with DNA ligase for 30min at 37°C. A closed circle forms if proteins are in close proximity. PCR rolling circle amplification by polymerase was carried out in the presence of fluorescent-labeled oligonucleotides for 100 min in the dark at 37°C. Following PLA reactions, PCNA or EdU were detected in embryos by incubation with FITC-conjugated anti-mouse antibody.

### In vivo chromatin assembly assays

Nascent DNA was labeled with 250  $\mu$ M of EdU in *Drosophila* Schneider Medium for 5 min, 10 min, and a 10 min pulse followed by chase for 1 hr and 2 hr. Embryos were fixed in 4% formaldehyde in PBS for 20min. Following incorporation of EdU and fixation, embryos were subjected to Click-iT reaction (Invitrogen) for 30min in the dark to add biotin to the EdU. Embryos were washed, blocked in the blocking buffer for antibody incubation (Roche) and incubated with mouse monoclonal anti-biotin antibody and the rabbit antibody of interest at 4°C overnight as described<sup>4</sup>. The PLA reaction was performed as described above. Following PLA, EdU was detected by incubation with FITC-conjugated anti-mouse antibody. In experiments using inhibitors, embryos were incubated in the *Drosophila* Schneider Medium with 40  $\mu$ M of the CBP inhibitor C646 (Sigma) for 1 hr or with 100  $\mu$ M of the UTX inhibitor GSK J4 (Tocris Bioscience) for 1 hr 30 min that were dissolved in DMSO. In control experiments, embryos were incubated for the same time with the same concentration of DMSO but without inhibitors. Embryos were then labeled with EdU for 15 min. CAA was performed with antibodies against H3K4me3 and H3K27ac.



Nucleus to nucleus variability in the CAA assays is large. Several reasons may contribute to this variability. Different nuclei in the embryo are at different stages in S phase, so there is therefore variation in the relative amounts of euchromatin and heterochromatin being replicated in particular embryos. It is possible that variability of permeabilization of embryos during 5–10 min labeling with EdU causes some inconsistencies. Embryos are three dimensional, and depending on the Z plane, different amounts of peripheral versus central nucleus can be present, thus altering the number of detectable signals.

### Antibodies

The following antibodies were used: H3K4me1 (1:2000, Active Motif); H3K4me2 (1:2000, Active Motif); H3K9me3 (1:2000, Active Motif); H3R17me2 (1:2000, Active Motif); H4R3me2 (1:4000, Active Motif); PCNA (1:5000, Abcam); ASH1<sup>39</sup> (1:1000); dSET1<sup>10</sup> (1:500); LID<sup>15</sup> (1:1000); LSD<sup>12</sup> (1:3000); PHO<sup>40</sup> (1:2000); UTX<sup>16</sup> (1:1000), DART1 and DART4<sup>27</sup> (1:1000 and 1:2000, respectively); CBP and pCAF<sup>19</sup> (1:2500 and 1:2000, respectively); HDAC1 (1:2000, Abcam); BRM<sup>33</sup> (1:500); OSA and HP1 (1:3000 and 1:5000, respectively, Developmental Hybridoma Bank); ISWI (1:2000, Abcam); H3K27Ac (1:2000, Active Motif); Polybromo<sup>35</sup> (1:2000); Su(Var)3–9 (1:300, Abcam).

### Examination of embryos

*Drosophila* wild-type strain Oregon R embryos were examined from gastrulation to mid-embryogenesis (4–6 hr after egg lay, AEL). All antibodies used in this study detect nuclear localization of all examined proteins. The concentrations of all antibodies were adjusted by immunofluorescence to minimize potential non-specific interactions prior to their use in PLA and CAA assays. Specificity controls included PLA reactions with only one antibody. None of the antibodies used showed any significant number of PLA signals in these control experiments. Specificity of PLA was monitored by examining whether PLA signals are detected only in the PCNA- and EdU-labeled nuclei. PLA signals were counted in 300–400 nuclei from several embryos in at least 3 independent experiments. Figure images reflect the results of a typical experiment. The assessment of the numbers of PLA signals in Table 1 are explained in the legend to Table 1.

### Western blotting

0.25 mg of nuclear extract prepared from *Drosophila* embryos was immunoprecipitated with PCNA antibody or with IgG as a negative control. The immunoprecipitated material was analyzed by Western blotting with antibodies against Polycomb and Trithorax

### Supplementary Material

Refer to Web version on PubMed Central for supplementary material.

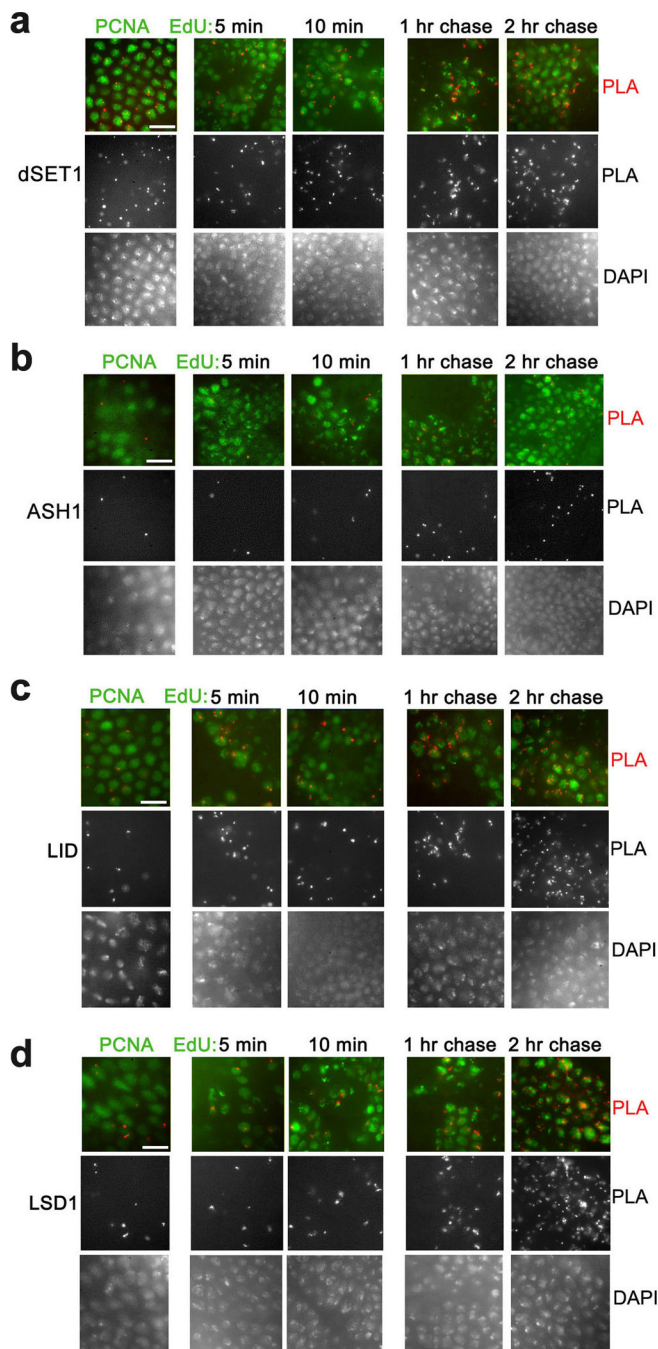
### ACKNOWLEDGEMENTS

We thank A. Shilatifard, T. Kusch, L. Di Stefano, R. Eisenman, S. Richard, J. Tamkun, S. Hirose for antibodies. This work was supported by the following grants: NIH R01GM075141, NIH P01CA129242 to A.M., and a grant from the Canadian Institutes of Health Research to H.W.B.

## REFERENCES

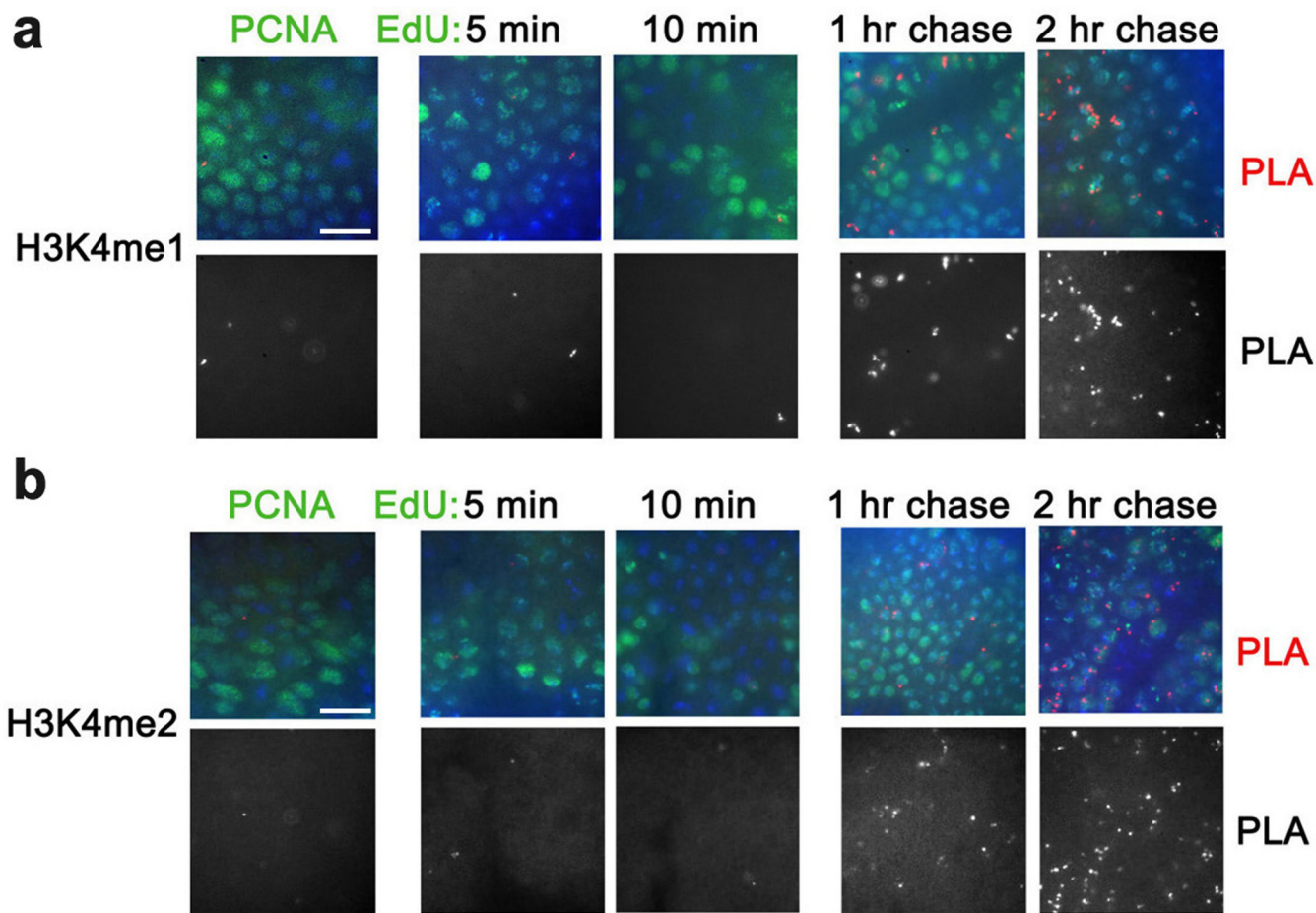
1. Corpet A, Almouzni G. Making copies of chromatin: the challenge of nucleosomal organization and epigenetic information. *Trends Cell Biol.* 2009; 19:29–41. [PubMed: 19027300]
2. Bonasio R, Tu S, Reinberg D. Molecular signals of epigenetic states. *Science.* 2010; 330:612–616. [PubMed: 21030644]
3. Zhu B, Reinberg D. Epigenetic inheritance: uncontested? *Cell Res.* 2011; 21:435–441. [PubMed: 21321606]
4. Petruk S, et al. TrxG and PcG Proteins but Not Methylated Histones Remain Associated with DNA through Replication. *Cell.* 2012; 150:922–933. [PubMed: 22921915]
5. Francis NJ, Follmer NE, Simon MD, Aghia G, Butler JD. Polycomb proteins remain bound to chromatin and DNA during DNA replication in vitro. *Cell.* 2009; 137:110–122. [PubMed: 19303136]
6. Lengsfeld BM, Berry KN, Ghosh S, Takahashi M, Francis NJ. A Polycomb complex remains bound through DNA replication in the absence of other eukaryotic proteins. *Sci Rep.* 2012; 2:661. [PubMed: 22993687]
7. Muller J, Kassis JA. Polycomb response elements and targeting of Polycomb group proteins in *Drosophila*. *Curr Opin Genet Dev.* 2006; 16:476–484. [PubMed: 16914306]
8. Ringrose L, Paro R. Polycomb/Trithorax response elements and epigenetic memory of cell identity. *Development.* 2007; 134:223–232. [PubMed: 17185323]
9. Byrd KN, Shearn A. ASH1, a *Drosophila* trithorax group protein, is required for methylation of lysine 4 residues on histone H3. *Proc Natl Acad Sci U S A.* 2003; 100:11535–11540. [PubMed: 13679578]
10. Ardehali MB, et al. *Drosophila* Set1 is the major histone H3 lysine 4 trimethyltransferase with role in transcription. *EMBO J.* 2011; 30:2817–2828. [PubMed: 21694722]
11. Shermoen AW, McClelland ML, O'Farrell PH. Developmental control of late replication and S phase length. *Curr Biol.* 2010; 20:2067–2077. [PubMed: 21074439]
12. Di Stefano L, Ji JY, Moon NS, Herr A, Dyson N. Mutation of *Drosophila* Lsd1 disrupts H3-K4 methylation, resulting in tissue-specific defects during development. *Curr Biol.* 2007; 17:808–812. [PubMed: 17462898]
13. Di Stefano L, et al. Functional antagonism between histone H3K4 demethylases in vivo. *Genes Dev.* 2011; 25:17–28. [PubMed: 21205864]
14. Lee N, et al. The trithorax-group protein Lid is a histone H3 trimethyl-Lys4 demethylase. *Nat Struct Mol Biol.* 2007; 14:341–343. [PubMed: 17351631]
15. Secombe J, Li L, Carlos L, Eisenman RN. The Trithorax group protein Lid is a trimethyl histone H3K4 demethylase required for dMyc-induced cell growth. *Genes Dev.* 2007; 21:537–551. [PubMed: 17311883]
16. Smith ER, et al. *Drosophila* UTX is a histone H3 Lys27 demethylase that colocalizes with the elongating form of RNA polymerase II. *Mol Cell Biol.* 2008; 28:1041–1046. [PubMed: 18039863]
17. Kruidenier L, et al. A selective jumonji H3K27 demethylase inhibitor modulates the proinflammatory macrophage response. *Nature.* 2012; 488:404–408. [PubMed: 22842901]
18. Tie F, et al. CBP-mediated acetylation of histone H3 lysine 27 antagonizes *Drosophila* Polycomb silencing. *Development.* 2009; 136:3131–3141. [PubMed: 19700617]
19. Petruk S, et al. Trithorax and dCBP acting in a complex to maintain expression of a homeotic gene. *Science.* 2001; 294:1331–1334. [PubMed: 11701926]
20. Tie F, Banerjee R, Conrad PA, Scacheri PC, Harte PJ. Histone demethylase UTX and chromatin remodeler BRM bind directly to CBP and modulate acetylation of histone H3 lysine 27. *Mol Cell Biol.* 2012; 32:2323–2334. [PubMed: 22493065]
21. Bannister AJ, et al. Selective recognition of methylated lysine 9 on histone H3 by the HP1 chromo domain. *Nature.* 2001; 410:120–124. [PubMed: 11242054]
22. Maison C, Almouzni G. HP1 and the dynamics of heterochromatin maintenance. *Nat Rev Mol Cell Biol.* 2004; 5:296–304. [PubMed: 15071554]

23. Murzina N, Verreault A, Laue E, Stillman B. Heterochromatin dynamics in mouse cells: interaction between chromatin assembly factor 1 and HP1 proteins. *Mol Cell*. 1999; 4:529–540. [PubMed: 10549285]
24. Schotta G, et al. Central role of *Drosophila* SU(VAR)3–9 in histone H3-K9 methylation and heterochromatic gene silencing. *EMBO J*. 2002; 21:1121–1131. [PubMed: 11867540]
25. Balint BL, et al. Arginine methylation provides epigenetic transcription memory for retinoid-induced differentiation in myeloid cells. *Mol Cell Biol*. 2005; 25:5648–5663. [PubMed: 15964820]
26. Bedford MT, Clarke SG. Protein arginine methylation in mammals: who, what, and why. *Mol Cell*. 2009; 33:1–13. [PubMed: 19150423]
27. Boulanger MC, et al. Characterization of the *Drosophila* protein arginine methyltransferases DART1 and DART4. *Biochem J*. 2004; 379:283–289. [PubMed: 14705965]
28. Mellor J. The dynamics of chromatin remodeling at promoters. *Mol Cell*. 2005; 19:147–157. [PubMed: 16039585]
29. Fry CJ, Peterson CL. Chromatin remodeling enzymes: who's on first? *Curr Biol*. 2001; 11:R185–R197. [PubMed: 11267889]
30. Siriaco G, Deuring R, Chioda M, Becker PB, Tamkun JW. *Drosophila* ISWI regulates the association of histone H1 with interphase chromosomes in vivo. *Genetics*. 2009; 182:661–669. [PubMed: 19380479]
31. Corona DF, et al. ISWI regulates higher-order chromatin structure and histone H1 assembly in vivo. *PLoS Biol*. 2007; 5:e232. [PubMed: 17760505]
32. Sala A, et al. Genome-wide characterization of chromatin binding and nucleosome spacing activity of the nucleosome remodelling ATPase ISWI. *EMBO J*. 2011; 30:1766–1777. [PubMed: 21448136]
33. Papoulas O, et al. The *Drosophila* trithorax group proteins BRM ASH1 and ASH2 are subunits of distinct protein complexes. *Development*. 1998; 125:3955–3966. [PubMed: 9735357]
34. Mohrmann L, et al. Differential targeting of two distinct SWI/SNF-related *Drosophila* chromatin-remodeling complexes. *Mol Cell Biol*. 2004; 24:3077–3088. [PubMed: 15060132]
35. Nakayama T, Shimojima T, Hirose S. The PBAP remodeling complex is required for histone H3.3 replacement at chromatin boundaries and for boundary functions. *Development*. 2012; 139:4582–4590. [PubMed: 23136390]
36. Hansen KH, et al. A model for transmission of the H3K27me3 epigenetic mark. *Nat Cell Biol*. 2008; 10:1291–1300. [PubMed: 18931660]
37. Clapier CR, Cairns BR. The biology of chromatin remodeling complexes. *Annu Rev Biochem*. 2009; 78:273–304. [PubMed: 19355820]
38. Peterson CL, Logie C. Recruitment of chromatin remodeling machines. *J Cell Biochem*. 2000; 78:179–185. [PubMed: 10842313]
39. Rozovskaia T, et al. Trithorax and ASH1 interact directly and associate with the trithorax group-responsive bxd region of the Ultrabithorax promoter. *Mol Cell Biol*. 1999; 19:6441–6447. [PubMed: 10454589]
40. Brown JL, Mucci D, Whiteley M, Dirksen ML, Kassis JA. The *Drosophila* Polycomb group gene pleiohomeotic encodes a DNA binding protein with homology to the transcription factor YY1. *Mol Cell*. 1998; 1:1057–1064. [PubMed: 9651589]



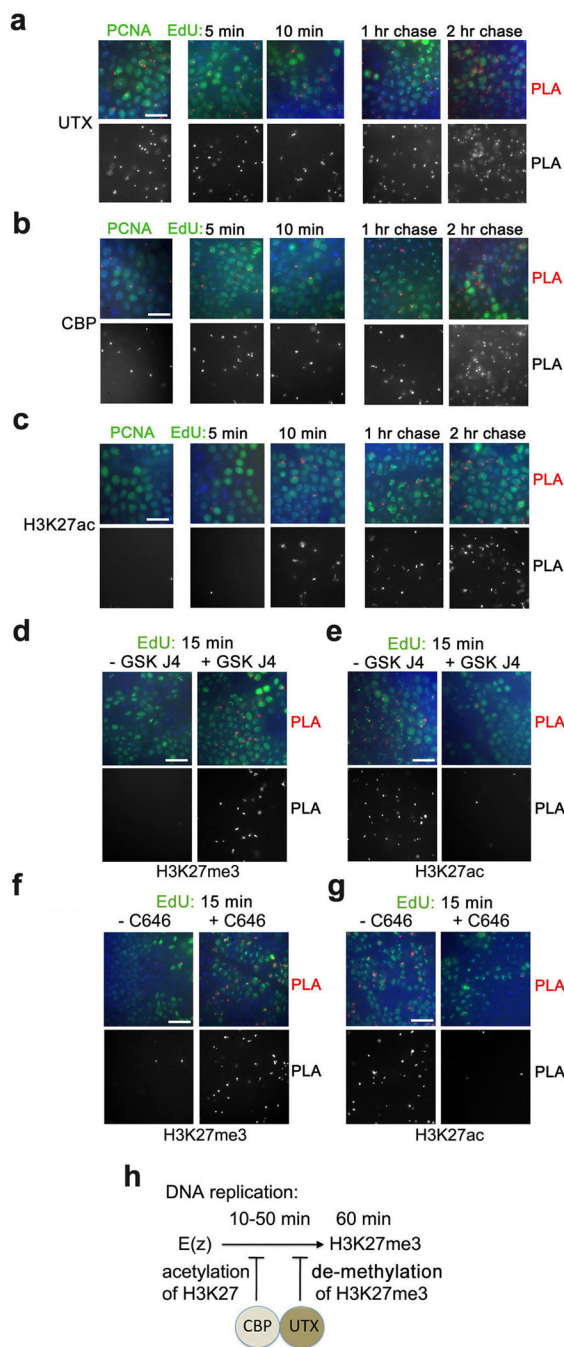
**Figure 1. Proximity of H3K4 HMTs and de-HMTs to PCNA and nascent DNA in *Drosophila* embryos**

(a–d) Proximity of H3K4 HMTs dSET1 (a) and ASH1 (b), and proximity of H3K4 de-HMTs LID (c) and LSD1 (d) to PCNA (left columns) and nascent DNA (columns 2–5) in gastrulating *Drosophila* embryos. Columns 2, 3, PLA with DNA labeled with EdU for 5 and 10 min. Columns 4, 5, DNA was pulse labeled with EdU for 10 min and chased for 1 and 2 hr. PLA signals are in red. PLA signals from the same images are shown in the middle panels. DAPI staining of DNA of the same images are shown in the bottom rows. The results are from three independent experiments. Scale bar, 10  $\mu$ m.



**Figure 2. Proximity of H3K4me1 and H3K4me2 to PCNA and nascent DNA**

Antibodies against H3K4me1 (a) and H3K4me2 (b) were used for PLA with PCNA (left column) and for CAA with EdU-labeled DNA (columns 2–5). Both histone H3 forms are first detected on DNA labeled with EdU for 1 hr. The results are from four independent experiments. Scale bar, 10  $\mu$ m.



**Figure 3. Acetylation of H3K27 by CBP and de-methylation of H3K27 by UTX may prevent methylation of H3K27 by E(z)**

(a) Proximity of H3K27 de-HMT UTX, HAT CBP and H3K27ac to PCNA and nascent DNA. (b, c) Inhibition of UTX activity by GSK J4 (b) and CBP activity by C646 (c) leads to early accumulation of H3K27me3 (left) and loss of H3K27ac (right). Embryos were incubated with (left columns) or without (right columns) GSK J4 (b) or C646 (c). They were then labeled with EdU for 15 min, followed by the PLA between biotin and either H3K27me3 or H3K27ac. Following CAA, embryos were immunostained for biotin (EdU, in

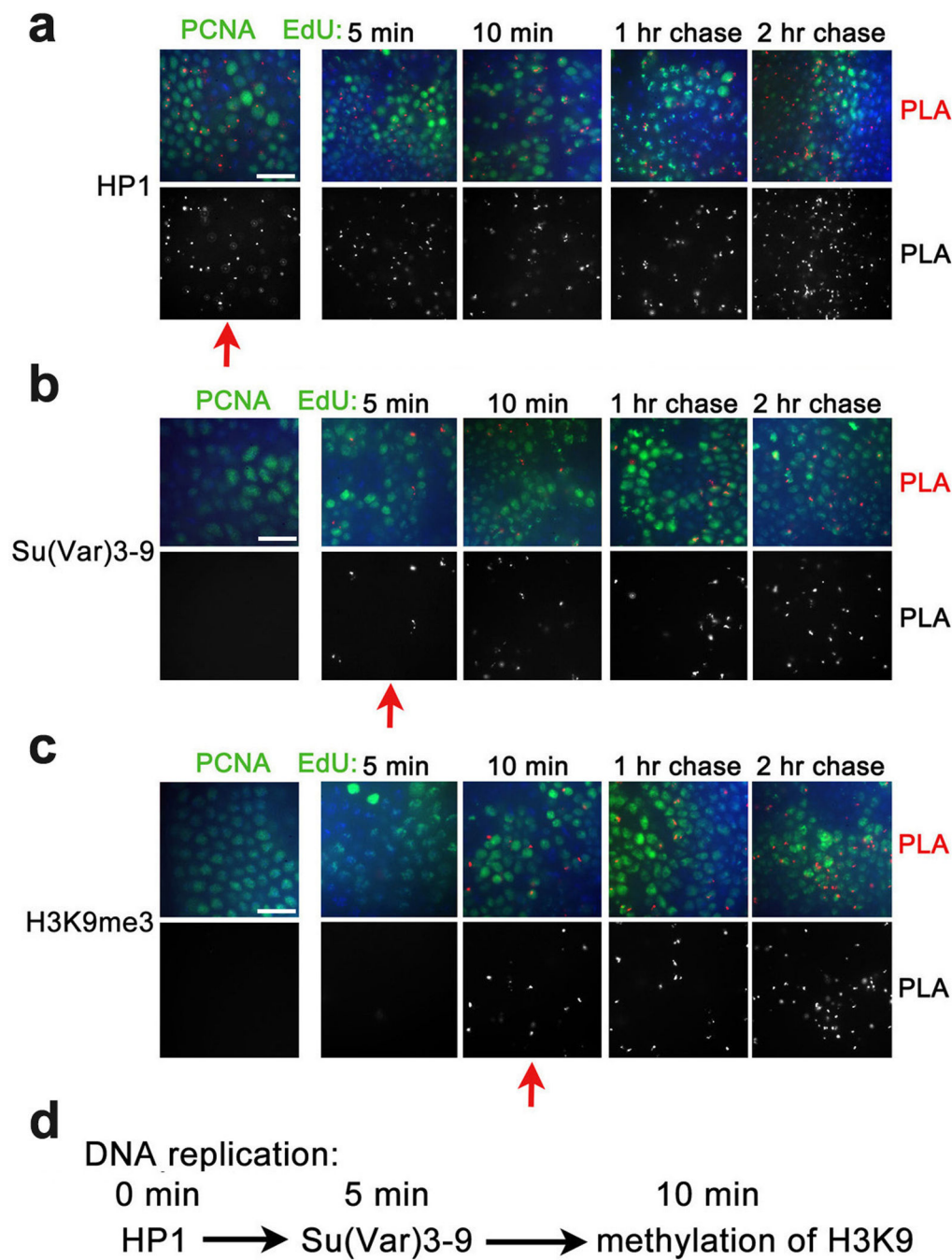
green). **(d)** A scheme of proposed inhibition of H3K27 methylation by E(z) by CBP and UTX following DNA replication. The results are from four independent experiments. Scale bar, 10  $\mu\text{m}$ .

Author Manuscript

Author Manuscript

Author Manuscript

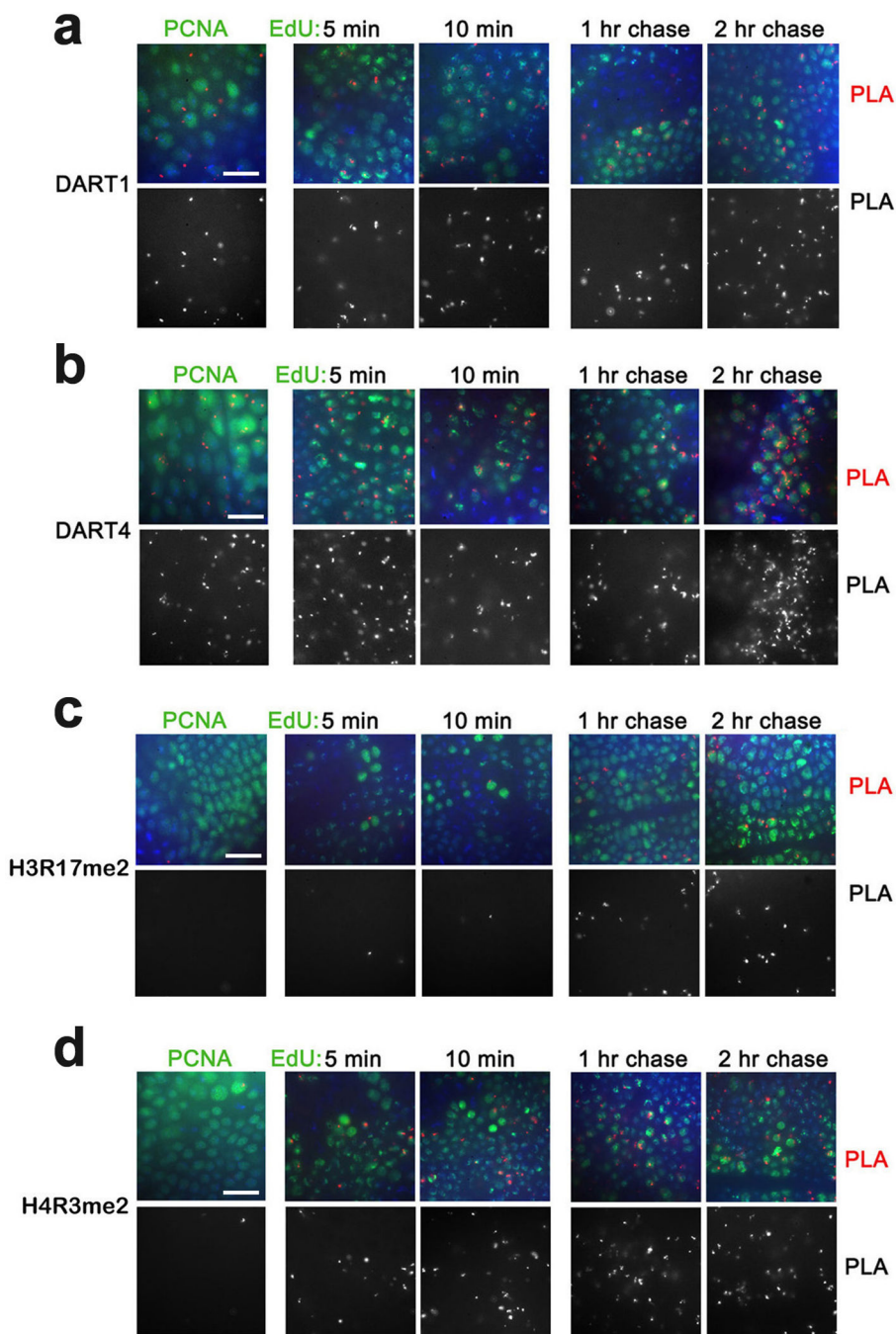
Author Manuscript



**Figure 4. Heterochromatin proteins are found in proximity to nascent DNA in defined order following replication**

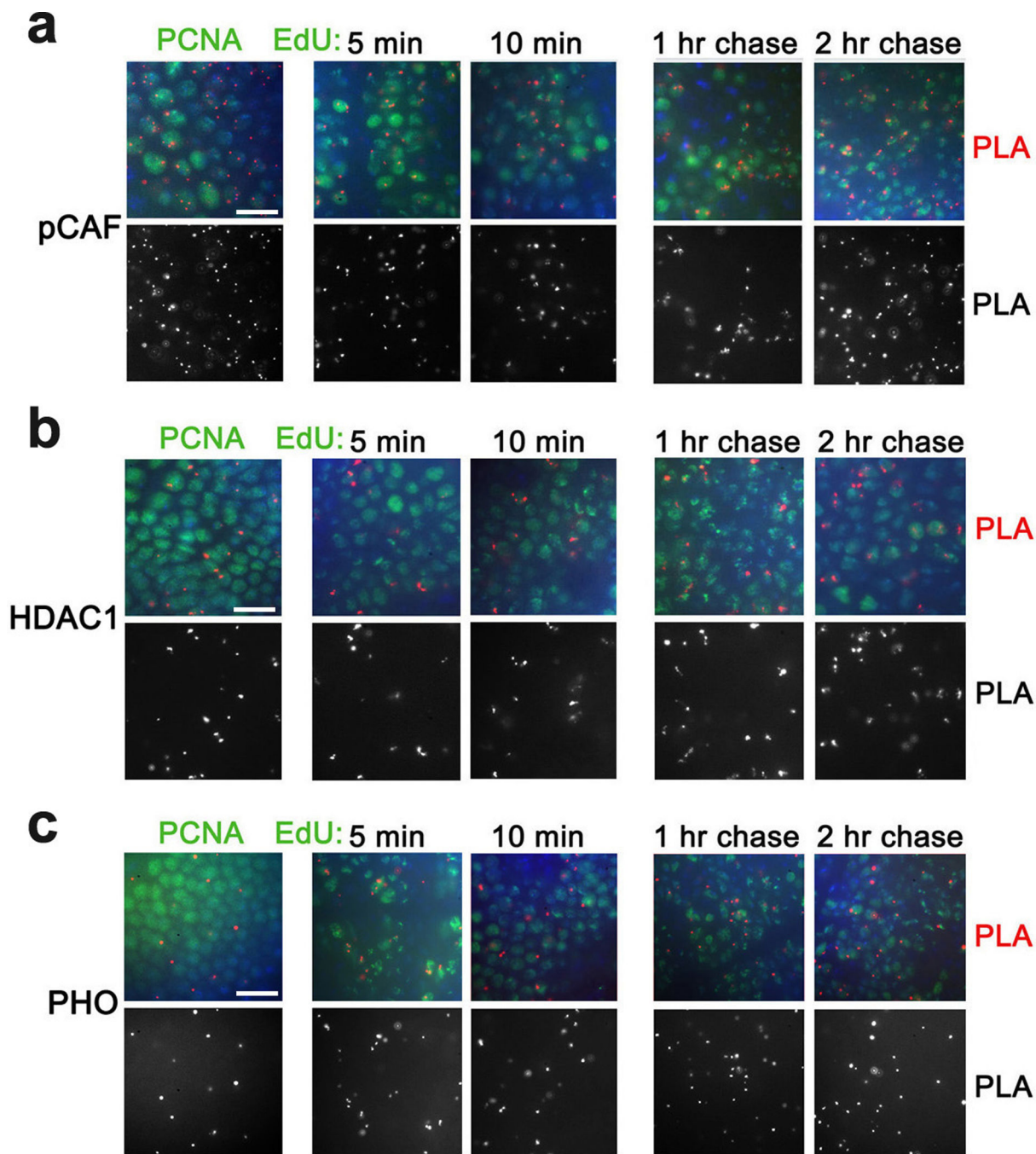
Antibodies against *Drosophila* HP1 protein (a), H3K9 demethylase Su(Var)3-9 (b) and H3K9me3 (d) were used for PLA with PCNA (left column) and for CAA with EdU-labeled DNA (columns 2-5). Red arrows indicate when proteins are first detected in these experiments. A scheme of proposed sequence of formation of heterochromatin is shown in d. The results are from three independent experiments. Scale bar, 10  $\mu$ m.



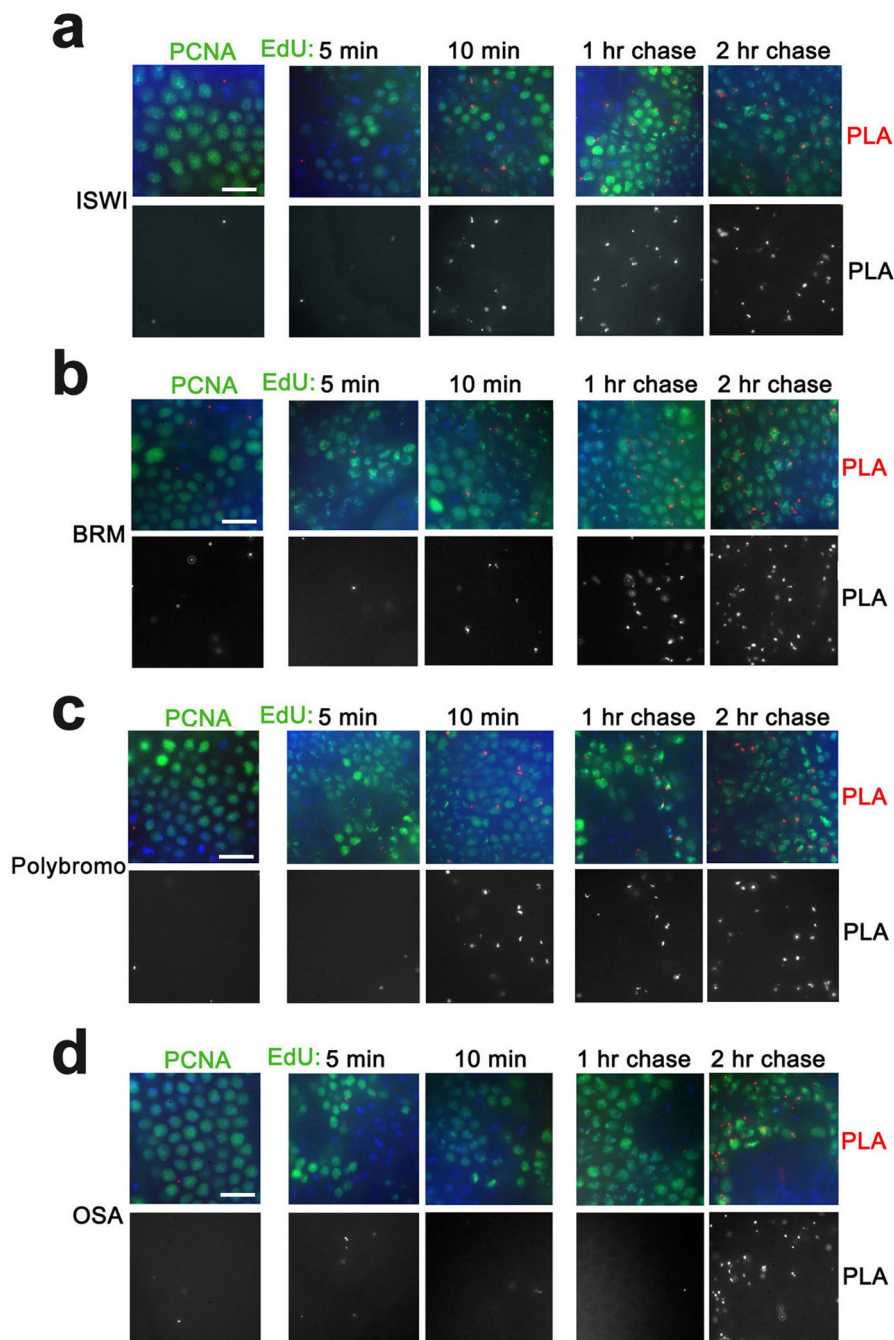


**Figure 5. Proximity of arginine methyltransferases and their products to PCNA and nascent DNA**

(a) DART1 and DART4 are in proximity to PCNA and nascent DNA. Antibodies against *Drosophila* DART1 and DART4 were used for PLA with PCNA (left column) and for CAA with EdU-labeled DNA (columns 2–5). (b) Histones are methylated at arginines following DNA replication. Antibodies against H3R17me2a and H4R3me2a were used for PLA with PCNA (left column) and for CAA with EdU-labeled DNA (columns 2–5). The results are from three independent experiments. Scale bar, 10  $\mu$ m.



**Figure 6. pCAF and HDAC1 and PHO are in proximity to PCNA and nascent DNA**  
 Antibodies against *Drosophila* pCAF (a), HDAC1 (b) and PHO (c) were used for PLA with PCNA (left column) and for CAA with EdU-labeled DNA (columns 2–5). The results are from three independent experiments. Scale bar, 10  $\mu$ m.



**Figure 7. Recruitment of chromatin remodeling proteins to nascent DNA**

Antibodies against *Drosophila* chromatin remodelers ISWI (a), BRM (b), Polybromo (c) and OSA (d) were used for PLA with PCNA (left column) and for CAA with EdU-labeled DNA (columns 2–5). ISWI, BRM and Polybromo are first detected on DNA labeled with EdU for 10 min. OSA is first detected on DNA labeled for 2 hr. The results are from three independent experiments. Scale bar, 10  $\mu$ m.

**Table 1**  
Proximity of chromosomal proteins and modified histones with PCNA and nascent DNA

	EdU				Function:	
	PCNA	5'	10'	1 hr		2 hr
TRX	+	+	+	+	++	<b>Lys HMTs:</b> H3K4
ASH1	-	-	+	+	+	H3K4
dSet1	+	+	+	+	++	H3K4
E(z)	+	+	+	+	++	H3K27
Su(Var)3-9	-	+	+	+	++	H3K9
						<b>Lys de-HMTs:</b>
LID	+	+	+	++	+++	H3K4
LSD1	+	+	+	++	+++	H3K4
UTX	+	+	+	+	++	H3K27
						<b>Arg HMTs:</b>
DART4	++	++	++	++	+++	H3/4R
DART1	+	+	+	+	++	H3/4R
CBP	+	+	+	+	++	<b>HAT</b>
pCAF	++	++	++	++	+++	<b>HAT</b>
HDAC1	+	+	+	+	++	<b>HDAC</b>
PC	+	+	+	+	++	<b>Ubiquitination</b>
PHO	+	+	+	+	+	<b>DNA binding</b>
HP1	++	++	++	++	+++	<b>Heterochromatin</b>
						<b>Chromatin remodeling:</b>
BRM	-	-	+	+	++	BAP, PBAP
Polybromo	-	-	+	+	+	PBAP
OSA	-	-	-	-	++	BAP
ISWI	-	-	+	+	++	NURF, CHRAC, ACF
H3K4me1	-	-	-	+	++	
H3K4me2	-	-	-	+	++	
H3K4me3	-	-	-	+	++	

	EdU				Function:
	PCNA	5'	10'	1 hr	
H3K27me3	-	-	-	+	++
H3K9me3	-	-	+	+	++
H4R3me2	-	+	+	++	++
H3R17me2	-	-	-	+	+
H3K27ac	-	-	+	+	++

The experiments were performed as shown in Figures 1–5. (–) indicates the absence of PL/A signals; (+ to ++++) indicates the increase in the number of PL/A signals for one antibody: '+', 1 signal per nuclei in 30–60% of EdU-labeled nuclei; '++', 1–4 signals per nuclei in 50–90% of EdU-labeled nuclei; '+++', more than 5 signals per nuclei in most EdU-labeled nuclei. Potential reasons for the large variability between embryos observed in these assays are discussed in Methods.