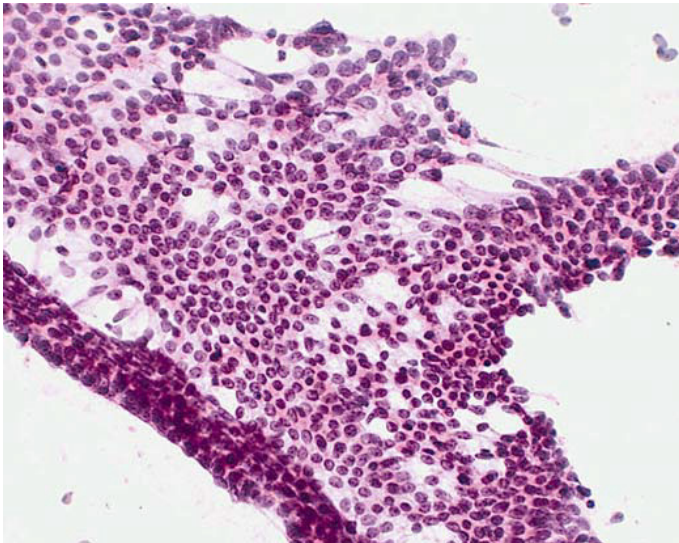


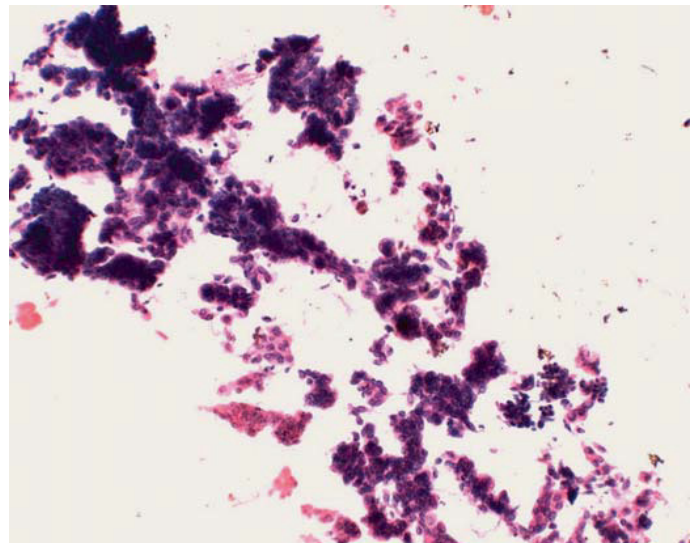
Ananthalakshmi Vijayakumar, The Diagnostic Utility of Intra-operative Cytology in the Management of Ovarian Tumours

(Published in Journal of Clinical and Diagnostic Research. 2013 June; 7(6).1047-1050.

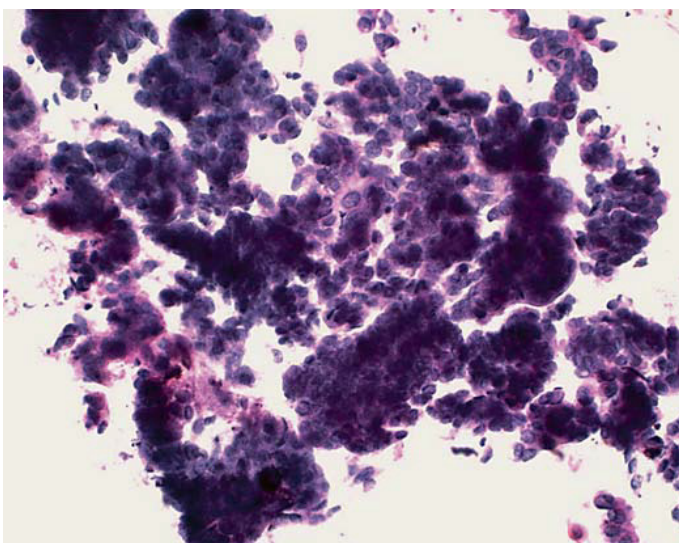
In this article corrections were done in legends of some images to acknowledge the source of that image [Table/Fig-2,3,4,5,6] and Reference [17] was added.



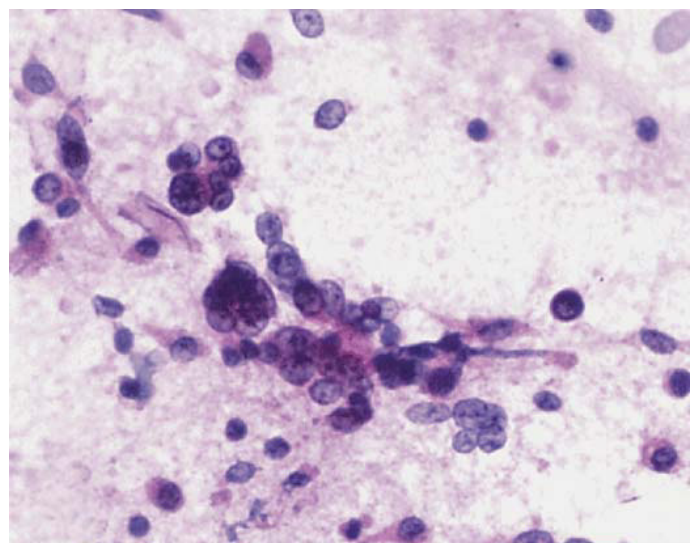
[Table/Fig-2]: Serous benign cystadenoma. Monolayer and 2D cellular aggregate. Cells with uniform size and shape. Oval bland nuclei with regular chromatin and small, fine nucleoli, scant cytoplasm. Preservation of polarity and cohesiveness. Clean background. HE, x 200
(Image courtesy: Dr. Alvarez Santin C. et al.)



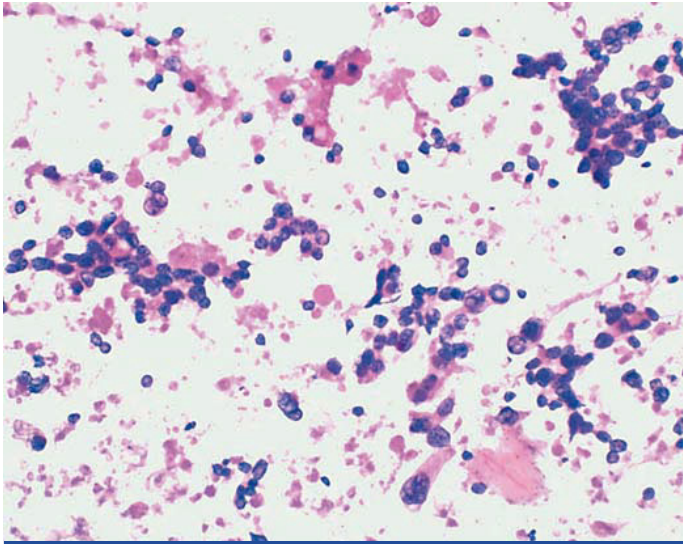
[Table/Fig-4]: Serous borderline tumor. Branching papillary pattern with peripheral detachment of small epithelial nests. Low nuclear atypia. Clean background. HE, x100
(Image courtesy: Dr. Alvarez Santin C. et al.)



[Table/Fig-3]: Serous borderline tumor. High cellularity. 2D and 3D dense cell groups. Scarce single cells. Low to moderate nuclear atypia. Oval and round nuclei, small, fine nucleoli, scant cytoplasm. HE, x200
(Image courtesy: Dr. Alvarez Santin C. et al.)

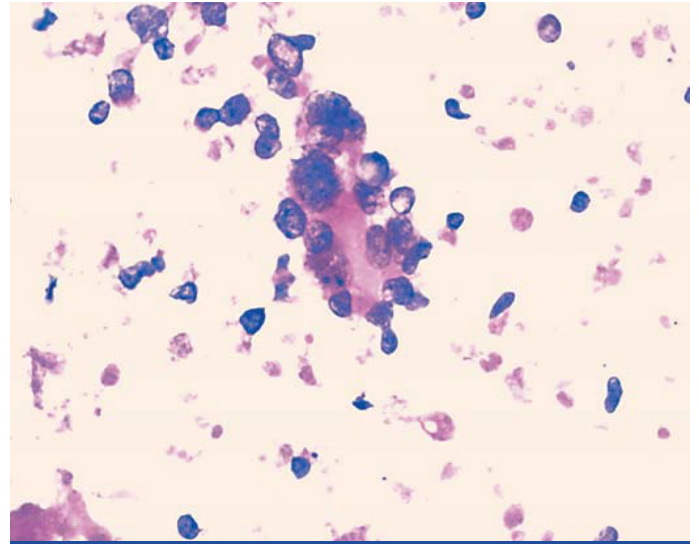


[Table/Fig-5]: Serous carcinoma. Numerous single cells and small 3D groups. Loss of polarity and cohesiveness. High nuclear atypia. Irregular chromatin and prominent or macro nuclei. HE x200
(Image courtesy: Dr. Alvarez Santin C. et al.)



[Table/Fig-6]: Clear cell carcinoma. High cellularity. Loosely cohesive cell clusters. Small, round papillary groups. Single cells. Eosinophilic secretion. HE, x 200

(Image courtesy: Dr. Alvarez Santin C. et al.)



[Table/Fig-7]: Clear cell carcinoma. Three dimensional papillary groups with hyalinized cores. Hobnail cells with peripheral nuclear protrusion. High nuclear atypia, hyperchromasia. Vacuolated cytoplasm. HE, x 400

(Image courtesy: Dr. Alvarez Santin C. et al.)

ACKNOWLEDGEMENT

We are thankful to Dr. Alvarez Santin C. et al., for allowing us to use study images of their article, for this publication [17].

(Post publication article amended on Oct 17, 2013).

REFERENCES

- [17] Alvarez Santin C, Sica A, Melesi S, Feijo A, Garrido G, Rodríguez Alvarez MC. Contribution of intraoperative cytology to the diagnosis of ovarian lesions. *Acta Cytol.* 2011; 55(1): 85-91.