



Published in final edited form as:

Nat Rev Immunol. 2013 October ; 13(10): . doi:10.1038/nri3531.

Tracking immune cells *in vivo* using magnetic resonance imaging

Eric T. Ahrens and

Department of Radiology, University of California at San Diego, San Diego, California 92093–0695, USA

Jeff W. M. Bulte

Russell H. Morgan Department of Radiology and Radiological Science, Division of MR Research, Department of Oncology, Department of Biomedical Engineering, Department of Chemical & Biomolecular Engineering, and Cellular Imaging Section and Vascular Biology Program, Institute for Cell Engineering, The Johns Hopkins University School of Medicine, 217 Traylor Building, 720 Rutland Avenue, Baltimore, Maryland 21205, USA

Eric T. Ahrens: eta@ucsd.edu; Jeff W. M. Bulte: jwmbulte@mri.jhu.edu

Abstract

The increasing complexity of *in vivo* imaging technologies, coupled with the development of cell therapies, has fuelled a revolution in immune cell tracking *in vivo*. Powerful magnetic resonance imaging (MRI) methods are now being developed that use iron oxide- and ¹⁹F-based probes. These MRI technologies can be used for image-guided immune cell delivery and for the visualization of immune cell homing and engraftment, inflammation, cell physiology and gene expression. MRI-based cell tracking is now also being applied to evaluate therapeutics that modulate endogenous immune cell recruitment and to monitor emerging cellular immunotherapies. These recent uses show that MRI has the potential to be developed in many applications to follow the fate of immune cells *in vivo*.

Non-invasive cell tracking is an emerging approach for imaging cells in their native environment. The phenotype of an immune cell is partly defined by the patterns and expression levels of cell surface molecules and secreted factors. These molecules are commonly assayed *in vitro* using techniques such as flow cytometry and immunohistochemistry. However, determining which cell surface molecules and secreted factors are present, and at what levels, under various culture conditions or disease states, is only one piece of the puzzle. A more challenging question to answer relates to the biological roles of these molecules *in vivo*. Non-invasive imaging of the trafficking patterns of phenotypically defined populations of immune cells can have an important role in answering this question. Moreover, immune cells are increasingly being used as next-generation therapeutics to treat chronic conditions such as autoimmune disease and cancer. A common requirement for the development of nearly all cell therapies is a non-invasive means to visualize the biodistribution of cells following injection. Imaging of cell trafficking can provide crucial information regarding the persistence and the motility of transferred cells, as well as the optimal routes of delivery and the therapeutic doses for individuals. On the regulatory side, emerging therapies using immune cells can be slow to gain regulatory approval partly because clinical researchers are challenged to verify where the cells traffic to

immediately after inoculation and where they migrate to over time. Cell tracking *in vivo* can potentially provide this information and might help to overcome regulatory barriers.

Inflammation is a hallmark of many of the major diseases on which biomedical research commonly focuses, such as autoimmune diseases, neurological disorders, transplant rejection and cancer. Measuring the effectiveness of treatment in terms of the inflammatory burden can be challenging. Conventional methods often include invasive biopsies and histology or imaging methods that are nonspecific for inflammation or that lack quantitative measures. There is a need for improved inflammation-specific imaging diagnostics, as well as surrogate biomarkers of inflammation, that could enable researchers to determine the efficacy of an anti-inflammatory therapy safely, quickly, quantitatively and in a longitudinal manner. There is also a need for pharmacological safety profiling to detect off-target inflammatory side effects in preclinical and clinical drug trials. Vital imaging can help to steer the decision-making process at the preclinical and clinical trial stages; it can facilitate smaller, less costly trials by enabling the enrolment of fewer patients. Imaging can potentially yield a rich data set from each patient in terms of inflammation severity and its time course in a three-dimensional anatomical context.

Given the clear need for *in vivo* cell tracking, much progress has been made in this area in recent years. Imaging methods using radionuclides have traditionally been used for the non-invasive imaging of leukocytes. However, technologies using magnetic resonance imaging (MRI) (BOX 1) are now emerging, and the field is experiencing a rapid expansion in the development of new imaging probes and genetically encoded reporters that enable the visualization of specific cell populations and molecular events *in vivo* in both animals and humans. These new capabilities have been made possible by next-generation, non-toxic cell labelling probes and by MRI methods. MRI has the advantage that it does not use ionizing radiation and can safely image deep tissues at high resolution.

Box 1

Magnetic resonance imaging

The signal used for magnetic resonance imaging (MRI) is derived from endogenous mobile water protons (^1H) or fluorinated molecules (such as ^{19}F) that are present or introduced in the subject. When the subject is placed in a large static magnetic field, the magnetic moment associated with ^1H or ^{19}F tends to align along the direction of the magnetic field. The ^1H or ^{19}F nuclei are perturbed from this equilibrium by pulsed radio-frequency radiation. Following the removal of the radio-frequency radiation, the nuclei recover to equilibrium and induce a transient voltage in a receiver antenna; this transient voltage constitutes the nuclear magnetic resonance (NMR) signal. The physical properties of a specific tissue, such as the density of nuclei, the nuclear spin–lattice relaxation time (T1) and the spin–spin relaxation time (T2), often determine the amount of signal that is available. The alignment of the nuclei along the magnetic field direction is not instantaneous, but occurs gradually over a period that is parameterized by the time constant T1. T2 is the characteristic time constant for which nuclei remain in ‘phase’ with each other, and its value is reflected in the duration of the transient NMR signal. MRI-based cell tracking involves detecting cells that exhibit a differential signal. The MRI signal can be controlled in four ways, as discussed below.

Positive contrast agents containing paramagnetic metals

Paramagnetic contrast agents primarily affect T1. Most often, T1 contrast agents contain Gd^{3+} that is chelated to a low-molecular-mass molecule to limit toxicity. The surrounding water protons rapidly exchange with the complex, which results in a

reduction of T1 and an increase in signal intensity (positive contrast) of Gd^{3+} -labelled cells on T1-weighted magnetic resonance images.

Negative contrast agents containing superparamagnetic iron oxides

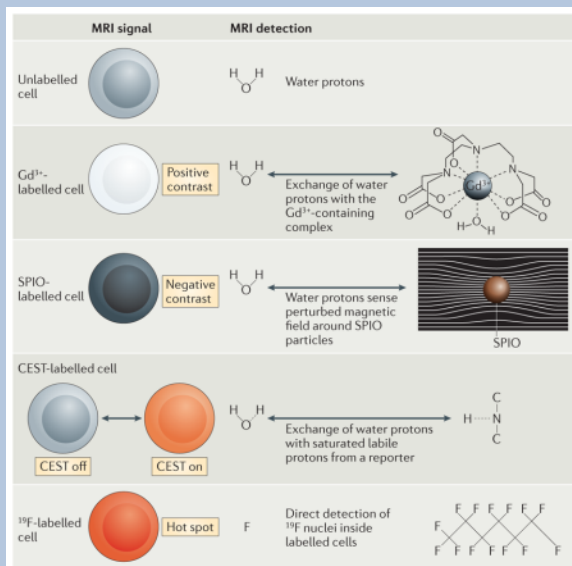
Superparamagnetic iron oxide (SPIO) contrast agents primarily affect T2 by virtue of their iron oxide crystals, which have a strong magnetic moment. These agents commonly consist of small crystalline particles of ferrous and ferric oxides ($FeO-Fe_2O_3$) that are coated with dextran. These particulates strongly perturb the magnetic field that they are in proximity to. Surrounding water molecules subsequently experience a highly inhomogeneous magnetic field, which results in a local signal loss (negative contrast) of SPIO-labelled cells on T2-weighted magnetic resonance images.

Molecular probes that induce chemical exchange saturation transfer

Certain protons that are loosely bound at specific chemical sites, such as amide protons, have a slightly different resonance frequency than water protons, from which the MRI signal is always collected. When these labile non-water protons are irradiated with a saturation pulse at their specific off-resonance frequency, the protons lose the ability to create an MRI signal. The saturated labile non-water protons exchange position with the water protons, which leads to a loss of MRI signal of the labelled cells on chemical exchange saturation transfer (CEST) images. The CEST irradiation can be turned on and off (see the figure).

Molecular probes containing ^{19}F

The physical principles behind detection and image formation are the same for both 1H and ^{19}F MRI. Unlike metal ion-based magnetic resonance contrast agents, which are detected through their indirect effects on the surrounding water protons, the ^{19}F probe functions as a tracer agent in that ^{19}F MRI directly detects the ^{19}F nuclei that are associated with the labelled cells, with no background. The ^{19}F signal is directly proportional to the number of fluorine atoms and the number of labelled cells that are present (see the figure). A composite ^{19}F and 1H image is generally constructed, which shows the regions containing labelled cells within their anatomical context.



In this Innovation article, we describe emerging methods and applications of MRI-based tracking of immune cells. These methods use exogenous cell labels that are comprised of

iron oxide nano-particles or perfluorocarbon (PFC) nano-emulsions (FIG. 1), or genetically-encoded MRI reporters (FIG. 2). The field of MRI-based cell tracking is rapidly evolving, and in the future we believe it will be possible to visualize not only the location and the number of cells *in vivo* but also more sophisticated biological processes, such as immune cell viability and activation status. These advances indicate a future in which MRI platforms will be used to elucidate a wide range of human cellular immunological processes *in vivo*.

Available *in vivo* cell tracking techniques

Much of our current knowledge of immune cell trafficking has come from static end points that have been obtained using conventional light microscopy and flow cytometry. In recent years, a wide range of imaging modalities have become available that can image immune cells in their native environment; however, each of these techniques has inherent advantages and limitations (TABLE 1). About a decade ago, the field saw a revolution with the introduction of intravital, two-photon microscopy, which enables precise determination of the movements of immune cells within lymph nodes and tumours¹. However, because of limited tissue opacity, it is not possible to non-invasively look into tissues at a depth beyond ~1 mm using two-photon microscopy. Deeper tissue penetration and whole-body non-invasive tomography of small animals can be achieved by capturing the photons emitted by fluorescent or bioluminescent probes. Such bioluminescence imaging has become one of the most widely used techniques for non-invasive tracking of immune cells and inflammation in small animals, but it cannot be used in larger animals or clinically because of the physical limits of light penetration in deep tissues.

Radionuclide labelling of cells is the oldest technique for tracking immune cells in larger animals and humans²; for example, ¹¹¹In-oxine labelling of autologous white blood cells is used as a diagnostic agent for the imaging of occult inflammation and infection in humans and is currently the only cell tracking technique approved by the United States Food and Drug Administration. Nuclear imaging is particularly useful for whole-body distribution studies, as there is no background signal.

Reporter genes became available in the field of nuclear medicine in the early 1990s following the development of the thymidine kinase enzyme that is derived from herpes simplex virus (HSV)³. After administration of positron-emitting substrates, such as ¹⁸FIAU (1-(2'-deoxy-2'-[¹⁸F]-β-D-arabinofuranosyl)-5-iodouracil) or ¹⁸FHBG (9-[4-[¹⁸F]fluoro-3-(hydroxymethyl)butyl]guanine), HSV thymidine kinase phosphorylates the radioactive probe and is responsible for its prolonged retention in transfected cells. In a few studies, this approach has been used to monitor T cell trafficking^{4,5}, including the use of positron emission tomography (PET) to visualize cytotoxic T cell homing to the tumour in a patient with glioma⁶.

However, there are cytotoxicity and patient safety concerns that limit the use of radionuclide-based methods for cell tracking. Moreover, radionuclide-based techniques are unable to provide anatomical imaging by themselves, and these scans must be combined, for example, with computed tomography (CT) or MRI, which adds to the methodological complexity and the cost. In addition, for the diagnostic imaging of inflammation using ¹¹¹In-oxine labelling of white blood cells, there is a considerable cost associated with the invasive leukapheresis procedure and *ex vivo* labelling of the patient's cells that is necessary before reinfusion. For applications in which the transferred cells, having been labelled *ex vivo*, are expected to persist in the body for extended periods of time (for example, in T cell and stem cell therapies), the effect of radio-cytotoxicity on cell viability is a concern. In addition, the finite half-life of the radioisotopes that are used precludes extended longitudinal studies.

These limitations of radionuclide-based techniques have helped to stimulate the development of alternative imaging methods, particularly MRI-based methods (TABLE 2).

Metal ion-based MRI contrast agents

Positive and negative contrast agents

Intravascular MRI contrast agents that incorporate metal ions (such as Gd^{3+}) are commonly used as positive agents to enhance the signal of lesions in clinical scans. The paramagnetic metal ions in these agents accelerate the relaxation of nearby water protons (1H), and this signal enhancement can be detected by 1H MRI (BOX 1) as a localized increase of image contrast. MRI contrast agents can also be used to label immune cells for cell tracking studies (TABLE 2). After cellular internalization by simple co-incubation, electroporation or conjugation to cell-labelling moieties, paramagnetic metal ions such as Mn^{2+} and Gd^{3+} can provide cells with positive contrast⁷. Positive contrast is generally preferred for image interpretation because the signal of the underlying anatomical structure is enhanced; the alternative, negative contrast (see below), decreases the signal, which makes the tissue invisible at times. However, labelling with paramagnetic metal ions only provides modest sensitivity in terms of the number of cells that can be detected (TABLE 2). Particulate formulations of metal ions, such as superparamagnetic iron oxide (SPIO) nanoparticles, create a very strong localized magnetic field disturbance in the MRI scanner because of the synergistic magnetic alignment of the individual iron ions. This localized magnetic perturbation affects nearby water protons, which causes a very strong negative contrast, in which the areas containing SPIO particles become dark on the images^{8,9}. Immune cells can be labelled with SPIO nanoparticles using two main approaches (FIG. 1): sorted or mixed cell populations can be labelled *ex vivo* by incubation with SPIO nanoparticles in culture media; or non-selected phagocytic cell populations (for example, macrophages) can be labelled *in situ* following intravenous injection of SPIO nanoparticles. In many cases, SPIO particles have been conjugated to fluorochromes, which creates dual-mode agents that enable the validation of *in vivo* MRI cell tracking by post-mortem light microscopy^{10,11}.

Labelling immune cells *ex vivo*

Inspired by clinical studies using radionuclide-based tracking of tumour-infiltrating lymphocytes, one of the first experimental applications of *ex vivo* SPIO labelling of cells was to label lymphocytes (FIG. 3a), first by labelling the cell membrane¹², followed by labelling intra-cellular endosomes^{13,14}. Membrane labelling can be achieved by targeting antibodies or peptides to specific cell surface epitopes, whereas intracellular labelling requires the use of cell-penetrating peptides or transfection agents if cells have a low level of phagocytosis or macropinocytosis activity. Intracellular labelling of lymphocytes has proven to be challenging, owing to the fairly small cytoplasmic volume of non-activated cells and the low phagocytic activity. The most widely used method for SPIO labelling of immune cells is to complex the negatively charged SPIO particles with various cationic transfection agents, such as poly-L-lysine or protamine sulphate, followed by co-incubation with cells in culture^{15–17}. Receptor-mediated endocytosis using specific SPIO–antibody conjugates, such as conjugates that are specific for CD11c, has also been reported for the *ex vivo* labelling of both immature and mature dendritic cells (DCs)¹⁸. Electroporation of the imaging agent into immune cells is also feasible¹⁹.

MRI-based immune cell tracking using SPIO particles has been applied to many types of preclinical study, ranging from the tumour homing of cytotoxic T cells²⁰ and natural killer cells²¹ to the organ-specific homing of autoimmune T cells^{22,23} (FIG. 3b) and to studies investigating the migratory patterns of DCs used in cancer vaccines^{24–26}. Iron oxide particles with a large, micrometre-sized diameter have been used to extracellularly label

lymphocytes with greater sensitivity than SPIO nanoparticles²⁷. As these iron oxide particles have a tenfold larger radius than SPIO nanoparticles, the labelled cells become much more magnetic, which enables the detection of single cells. However, the clinical translation potential of these fairly large particles remains uncertain. When dedicated gradient insert coils are used to enhance the performance of the MRI scanner, SPIO-labelled macrophages can also be imaged at the single-cell level²⁸.

Labelling macrophages *in vivo*

Labelling of cells *in vivo* following systemic injection of SPIO particles (FIG. 1) is generally achieved by nanoparticles being taken up by the phagocytic cells of the reticuloendothelial system (RES), including circulating blood monocytes and tissue macrophages (and in much smaller numbers, neutrophils and DCs), which are frequently found at inflammatory sites. This approach has been broadly applied to image inflammatory events in both preclinical and clinical settings^{29–35}. In a clinical context, this approach has been most widely used to image lymph nodes for tumour staging³⁶ and to detect atherosclerotic plaques³⁷. Immune cell labelling *in situ* can also be achieved by the direct injection of SPIO agents into a tissue. In a mouse study, SPIO labelling of DCs was accomplished following vaccination with irradiated labelled tumour cells from which antigens and SPIO were co-captured by the DCs. Labelled DCs could be visualized homing to the sentinel lymph node several days after this so-called ‘magnetovaccination’²⁶ (FIG. 3c).

Concerns and limitations

It is important that any cell labelling protocol that is used for imaging does not substantially alter the immunological properties of the cells, and that it does not cause marked cytotoxicity or changes in the phenotype and the function of the cells. Changes in the phenotype of immune cells after labelling could reduce the efficacy of immunotherapeutic strategies. Overall, very few studies have noted an adverse effect of SPIO labelling on cell function or phenotype. In one study³⁸, following SPIO labelling in culture, macrophages were found to have altered cytokine production, which was shifted towards an anti-inflammatory, less responsive phenotype. In other studies, the cytokine profile, surface expression of phenotypic markers, migratory capacity and ability to present antigens did not differ in SPIO-labelled DCs compared with in unlabelled DCs^{26,39,40}. SPIO particles are biodegradable and, depending on the cell type, are broken down quickly; for example, when SPIO particles are taken up by K upffer cells in the liver, the iron is metabolized and can be found in haemoglobin as soon as one week after administration⁴¹. Thus, SPIO-based cell labelling is best suited to short-term imaging studies; for example, MRI-guided injection, in which the infusion of cells and their initial engraftment can be imaged in real-time¹⁰, is viewed as a key early clinical use of SPIO-based cell tracking.

There are other limitations to SPIO-based cell tracking that are also common to essentially all nanoparticle-based and PFC nanoemulsion-based (see below) imaging reagents: in mitotic cells, cell division and subsequent dilution of the intracellular label can potentially limit long-term cell visualization; cell death can lead to dispersion of the reagent and loss of MRI detectability; the imaging reagent could potentially be transferred to resident phagocytes (such as macrophages); and if a large number of these labelled phagocytes remain in a region of interest, false positive contrast could result.

PFC cell labels and ¹⁹F MRI detection

In an effort to design next-generation cell tracking probes, there has recently been considerable interest in the use of PFC nano-emulsions. PFC emulsions can be used to track cells using *ex vivo* and *in situ* cell labelling approaches that are analogous to those used for

SPIO nanoparticles (FIG. 1). PFC-based cell tracking enables high specificity cell detection and the quantification of cells. PFC-labelled cells are detected using ^{19}F MRI (BOX 1), whereas metal ion-based contrast agents (such as SPIO particles) are detected using ^1H MRI. The PFC functions as a tracer agent rather than as a contrast agent, as ^{19}F MRI directly detects the ^{19}F nuclei that are associated with the labelled cells. Importantly, because of the extremely low concentration of naturally occurring ^{19}F in the body, ^{19}F MRI has no background signal from the host's tissues and therefore only labelled cells are observed. Thus, false positive cell detection is unlikely, which overcomes one of the major limitations of metal ion-based cell labelling approaches. Moreover, quantification of the ^{19}F MRI signal is directly related to the apparent number of cells in the regions of interest or, alternatively, to the inflammation severity.

PFCs are among the most biologically inert organic molecules that have ever been produced⁴². They are water insoluble and immiscible in cell membranes and, for cellular use, they must be formulated into colloidal suspensions, such as nanoemulsions, ideally with a small droplet diameter (<200 nm)⁴³. There are no known enzymes that metabolize PFCs *in vivo* and they are not degraded at typical lysosomal pH values⁴²; thus, cell labelling with PFCs can potentially be long lasting.

Labelling immune cells *ex vivo*

The idea of using PFCs as tracer agents for ^{19}F MRI followed shortly after the discovery of ^1H MRI⁴⁴, but their use in cell tracking is a relatively recent development^{45,46}. Different nanoemulsion formulations have been designed for *ex vivo* (FIG. 3d) and *in situ* cell labelling⁴³. For *ex vivo* labelling, an important innovation has been the formulation of nanoemulsions that intracellularly label cells in culture without the use of transfection methods⁴⁷ — through the inclusion of charged moieties on the nanoemulsion droplet surface — thereby improving overall cell viability and the ease of use of PFCs. Numerous *in vitro* studies have investigated the effects of PFC labelling on cellular phenotype and function in primary immune cells, for example, using mouse DCs⁴⁵ and T cells⁴⁸. The most detailed study so far involved PFC-labelled primary human DCs⁴⁹; cells were assayed for viability, maturation phenotype, cytokine production, T cell stimulatory capacity and chemotaxis, and no differences in these parameters were observed between labelled and unlabelled cells *in vitro*.

Tracking immune cells *in vivo*

Tracking cells *in vivo* using PFCs was first used to visualize DC migration in mice⁴⁵. Several T cell studies have used PFC-based cell tracking to examine early pancreas inflammation in non-obese diabetic (NOD) mice⁵⁰, which are an acute inflammation model⁴⁸, and the biodistribution of mucin 1 (MUC1)-specific T cells in inflammatory bowel disease (IBD)⁵¹. A surprising finding of the IBD study was the localization of MUC1-specific T cells in the pancreatic duct, which indicates that pancreatitis, which is often diagnosed in patients with IBD, might be a true extra-intestinal manifestation of the disease. In addition, primary human DCs that are relevant to immunotherapeutic clinical trials have been labelled using PFCs and longitudinally tracked *in vivo* into draining lymph nodes in NOD severe combined immunodeficient (SCID) mice⁴⁹.

Imaging of macrophage recruitment to inflammatory sites *in vivo* could help to elucidate the host inflammatory response, could provide considerable diagnostic value for a wide range of diseases and could be used as a surrogate marker and to monitor therapeutic interventions. By using PFC nanoemulsions that have been formulated for intravenous injection and that have a long blood half-life, nanoemulsion droplets enter into the RES and are intrinsically taken up *in situ* by monocytes and macrophages and, to a lesser extent, by neutrophils and

DCs. As these *in situ*-labelled cells participate in inflammatory events in the body, the result is ^{19}F accumulation at inflammatory sites. Importantly, the *in vivo* ^{19}F MRI signal can be quantified in inflammatory sites, and this signal is linearly proportional to the macrophage burden^{52,53}. ^{19}F labelling *in situ* has been widely used to visualize inflammation in a large number of preclinical models of human disease, such as IBD⁵³ (FIG. 3e), bacterial infection⁵⁴, organ transplant rejection^{55,56}, experimental allergic encephalomyelitis^{52,57}, peripheral nerve inflammation⁵⁸, pulmonary inflammation⁵⁹ and cardiac and cerebral ischaemia⁶⁰.

Extending the use of PFC emulsions

Similar to dual-mode SPIO agents, PFC nanoemulsions that can be detected by both ^{19}F MRI and fluorescence have also been devised^{45,47}; these reagents contain a bright fluorescent dye that is directly conjugated to the PFC molecule prior to nanoemulsion formulation, which thereby ensures that the originating ^{19}F MRI and fluorescent signals are coincident in labelled cells. The fluorescent moiety enables the identification of the fate and the phenotype of labelled cells using flow cytometry, fluorescence microscopy or *in vivo* optical imaging; for example, dual-mode fluorescent PFC emulsions have been used to label primary murine CD4⁺ T cells that were then adoptively transferred into wild-type mice and imaged in multiple lymph nodes using MRI, followed by analysis using optical methods⁴⁷. Near-infrared dyes have also been incorporated into PFC emulsions, which enables *in vivo* imaging at moderate tissue depths⁶¹. Moreover, fluorescent PFC emulsions have considerable potential as an optical-only cell labelling probe because of their brightness, low toxicity and long retention time in cells.

Conventional ^{19}F nuclear magnetic resonance (NMR) spectroscopy can also be used to assay the biodistribution of PFC-labelled immune cells with high sensitivity in fixed, intact tissue panels. ^{19}F NMR can measure the total cell count (or cell density) of labelled cells in tissue samples; for example, NMR cytometry has been used in T cell biodistribution studies in rodent IBD and diabetes models^{50,51,62}. As NMR is non-destructive, the same tissues can then be processed for histology to further refine the tissue analysis. ^{19}F -capable NMR spectrometers are ubiquitous in research laboratories and are commonly used for molecular structure determination, therefore the implementation of NMR cytometry is fairly straightforward. NMR instrumentation can also be used to rapidly and quantitatively assay inflammation in intact, excised tissue samples, which yields an inflammatory index⁵² that is proportional to the macrophage burden.

Future directions in immune cell tracking

Current MRI-based cell tracking technologies are poised to have a broad impact on basic and biomedical research, but there are still substantial efforts underway to devise next-generation cell imaging technologies.

MRI reporter genes

One important aim of these efforts is the development of robust MRI reporter genes. An ideal reporter gene would not be diluted by cell mitosis and would be cleared rapidly after cell death and could potentially elucidate cell viability, activation status and/or differentiation status. In recent years, researchers have been exploring schemes using exogenous (that is, injected) substrates, endogenous substrates or those that do not require a substrate (FIG. 2) in their quest to define optimal nucleic acid-based MRI reporters.

The first exogenous substrate approach involves genetically encoded, cell surface ligands that bind to MRI-detectable probes; for example, suitable ligands could include biotin⁶³ or

the transferrin receptor⁶⁴, for use with a probe that consists of a SPIO nano-particle bound to streptavidin or transferrin, respectively. Alternatively, transfection of cells with the HSV thymidine kinase reporter gene used for PET imaging can be used to accumulate a thymidine analogue probe in these cells that is detectable by chemical exchange saturation transfer (CEST) MRI⁶⁵ (BOX 1). One of the challenges of using ligand–probe-based reporter schemes is the efficient delivery of the probe to the tissues of interest.

The second class of MRI reporters use endogenous substrates (FIG. 2); several distinct technologies have been developed in this area. In one approach, transgenic or vector technologies are used to induce cells to express genes that encode engineered iron-binding proteins, for example, those in the ferritin family^{66–69}. Following transgene expression *in situ*, the ferritin outer protein shell sequesters physiologically available iron, and the endogenous formation of an iron oxide crystal in the ferritin core renders the complex paramagnetic, which produces MRI contrast. Reporters that do not require a substrate have more recently been developed that involve the expression of amide-rich proteins that can be detected by CEST MRI⁷⁰. So far, MRI reporter genes have not been used for immune cell tracking and their use has been mostly limited to tumour cells^{65,70} and to stem cells⁶⁹.

Sensing the extracellular and intracellular environment

Another key area of innovation in the use of MRI to track cells has been the development of probes that can sense enzymatic activity and/or changes in the microenvironment, for example, changes in the local pH. Using arginine-filled liposomes as pH-sensitive contrast agents, changes in tissue pH that are associated with an immune response can potentially be detected by CEST MRI^{71,72}. In addition, there are *in vivo* MRI probe technologies to detect enzymes that are overexpressed following cellular activation, such as protein kinase A (PKA). Following PKA-mediated phosphorylation of its peptide substrates, which can function as CEST contrast agents, a 50% change in the CEST MRI signal was observed⁷³.

MRI measurements of intracellular oximetry have also been used to assay cell viability and metabolism⁷⁴. Certain PFC molecules used for *in vivo* cytometry readily dissolve paramagnetic oxygen, which alters the MRI property (that is, the relaxation time) of the ¹⁹F signal in a manner that linearly increases with the absolute partial pressure of oxygen⁷⁵. In a rodent brain glioma model, intracellular oximetry technology has recently been used to monitor the apoptosis dynamics of tumour cells as a result of their interaction with CD8⁺ T cells that are specific for glioma-associated antigens⁷⁶.

Tracking cell–cell interactions

MRI also has the potential to visualize multiple cell populations *in vivo* to follow the spatial dynamics of cell–cell interactions, such as antigen presentation to B cells or T cells, and macrophage-mediated recruitment of lymphocytes; for example, *ex vivo* cell-labelling agents containing PFC molecules with different ¹⁹F NMR chemical shifts (that is, molecular signatures) can be used to label different immune cell subsets. Following injection of these labelled subsets, *in vivo* multicolour magnetic resonance images can be constructed, which show the distribution of each cell species according to its unique ¹⁹F spectral signature⁷⁷ (a process known as multichannel *in vivo* cytometry). Alternatively, discrete immune cell populations could be labelled with two different modes of contrast, such as a positive contrast agent with a negative contrast agent (TABLE 2), a metal-based contrast agent with a CEST agent⁷⁸, or multiple CEST agents of different off-resonance frequencies, which enables the generation of multiple colours⁷⁹.

Prospects and challenges for translation

The use of MRI-based cell tracking in clinical trials is still in its infancy. Only a few small clinical pilot studies using SPIO-based cell tracking have been reported so far⁸⁰. In the first clinical trial to use MRI-based cell tracking, an immunotherapeutic DC vaccine was labelled *ex vivo* with SPIO nanoparticles, and ultrasound imaging was used to guide the delivery of these cells into the inguinal lymph nodes in patients with melanoma⁴⁰. Using MRI it was shown that the target lymph node was missed in four out of eight patients; this low success rate was not detected when ¹¹¹In-oxine-labelled DCs were tracked using low-resolution radiosciintigraphy⁴⁰. In another study, peripheral blood mono-nuclear cells were labelled *ex vivo* with SPIO particles, injected systemically and visualized at sites of cutaneous inflammation⁸¹. As a setback for further clinical use, the SPIO agents that have been used for cell labelling — ferumoxides injectable solution (Feridex; Berlex laboratories in the United States (also known as Endorem in Europe)) and ferucarbotran (Resovist; Bayer Schering Parma AG) — are no longer being manufactured because of economic considerations. There are other experimental SPIO agents available but they would need large investments in order to be developed as a clinical MRI contrast agent.

Instead, there has recently been a technological push to use PFC nanoemulsions for clinical MRI-based cell tracking⁴⁹. PFC labelling is clinically attractive because of the very low toxicity of the probes, the exceptionally high cell specificity in images and the cell quantification capacity *in vivo*. The sensitivity of PFC labelling to detect small cell numbers is potentially less than for SPIO agents (TABLE 2), but this disadvantage may be offset by the fact that there is no background signal in ¹⁹F images, cell detection is unambiguous (in other words, there are no false positives) and images can be readily quantitated to yield apparent cell numbers in regions of interest. The technical barriers that are associated with the implementation and the quantification of ¹⁹F MRI on a clinical scanner are surmountable; prior studies have shown the feasibility of efficient data collection schemes and the quantification of PFC signal intensity at clinical field strengths⁸².

Our view is that MRI-based cell tracking will routinely be used in the future for clinical trials to monitor therapeutic cell delivery and inflammation. We expect that MRI-based cell tracking will provide unexpected results regarding how cells behave *in vivo* following delivery and that this information will be crucial to obtain clinical success. Moreover, we foresee real-time SPIO-based MRI-guided immune cell delivery as a routine application of cell tracking, in conjunction with MRI-compatible injection catheters⁸³. Finally, the development of cell tracking software for automated analysis of MRI scans may further facilitate image interpretation and intercomparison studies.

Conclusion

Overall, MRI-based cell tracking has great potential, not only in basic immunological research but also to guide the development of experimental immune cell-based therapies. SPIO-based cell tracking has already been used in the clinic and PFC cell labels, which are detected using ¹⁹F MRI, are currently being incorporated into clinical trials in the United States; these methods are likely to gain momentum in the future. In the meantime, emerging MRI-based cell tracking approaches could enable the visualization of cell survival, the activation status of immune cells and the identification of cell–cell interactions *in vivo* in ways that were previously impossible.

Acknowledgments

The authors are supported by US National Institutes of Health grants R01-CA134633, P41-EB0019772, R01-NS045062, R01-EB007825, R01-DA026299 and U54-CA151838, the Maryland Stem Cell Research Foundation and the California Institute for Regenerative Medicine.

References

1. Bousoo P, Moreau HD. Functional immunoimaging: the revolution continues. *Nature Rev Immunol.* 2012; 12:858–864. [PubMed: 23175230]
2. Thakur ML, Lavender JP, Arnot RN, Silvester DJ, Segal AW. Indium-111-labeled autologous leukocytes in man. *J Nuclear Med.* 1977; 18:1014–1021.
3. Tjuvajev JG, et al. Imaging the expression of transfected genes *in vivo*. *Cancer Res.* 1995; 55:6126–6132. [PubMed: 8521403]
4. Koehne G, et al. Serial *in vivo* imaging of the targeted migration of human HSV-TK-transduced antigen-specific lymphocytes. *Nature Biotech.* 2003; 21:405–413.
5. Dubey P, et al. Quantitative imaging of the T cell antitumor response by positron-emission tomography. *Proc Natl Acad Sci USA.* 2003; 100:1232–1237. [PubMed: 12547911]
6. Yaghoubi SS, et al. Noninvasive detection of therapeutic cytolytic T cells with [¹⁸F]-FHBG PET in a patient with glioma. *Nature Clin Pract Oncol.* 2009; 6:53–58. [PubMed: 19015650]
7. Aoki I, et al. Cell labeling for magnetic resonance imaging with the T-1 agent manganese chloride. *NMR Biomed.* 2006; 19:50–59. [PubMed: 16411253]
8. Hawrylak N, et al. Nuclear-magnetic-resonance (NMR) imaging of iron oxide-labeled neural transplants. *Exp Neurol.* 1993; 121:181–192. [PubMed: 8339769]
9. Bulte JWM, Kraitchman DL. Iron oxide MR contrast agents for molecular and cellular imaging. *NMR Biomed.* 2004; 17:484–499. [PubMed: 15526347]
10. Gorelik M, et al. Use of MR cell tracking to evaluate targeting of glial precursor cells to inflammatory tissue by exploiting the very late antigen-4 docking receptor. *Radiology.* 2012; 265:175–185. [PubMed: 22923719]
11. Cromer Berman SM, et al. Cell motility of neural stem cells is reduced after SPIO-labeling, which is mitigated after exocytosis. *Magn Reson Med.* 2013; 69:255–262. [PubMed: 22374813]
12. Bulte JW, et al. Specific MR imaging of human lymphocytes by monoclonal antibody-guided dextran-magnetite particles. *Magn Reson Med.* 1992; 25:148–157. [PubMed: 1375703]
13. Bulte JW, et al. Selective MR imaging of labeled human peripheral blood mononuclear cells by liposome mediated incorporation of dextran-magnetite particles. *Magn Reson Med.* 1993; 29:32–37. [PubMed: 7678318]
14. Yeh TC, Zhang W, Ildstad ST, Ho C. Intracellular labeling of T-cells with superparamagnetic contrast agents. *Magn Reson Med.* 1993; 30:617–625. [PubMed: 8259062]
15. Frank JA, et al. Clinically applicable labeling of mammalian and stem cells by combining superparamagnetic iron oxides and transfection agents. *Radiology.* 2003; 228:480–487. [PubMed: 12819345]
16. Arbab AS, et al. Labeling of cells with ferumoxides-protamine sulfate complexes does not inhibit function or differentiation capacity of hematopoietic or mesenchymal stem cells. *NMR Biomed.* 2005; 18:553–559. [PubMed: 16229060]
17. Thu MS, et al. Self-assembling nanocomplexes by combining ferumoxytol, heparin and protamine for cell tracking by magnetic resonance imaging. *Nature Med.* 2012; 18:463–467. [PubMed: 22366951]
18. Ahrens ET, Feili-Hariri M, Xu H, Genove G, Morel PA. Receptor-mediated endocytosis of iron-oxide particles provides efficient labeling of dendritic cells for *in vivo* MR imaging. *Magn Reson Med.* 2003; 49:1006–1013. [PubMed: 12768577]
19. Walczak P, et al. Magnetoelectroporation: improved labeling of neural stem cells and leukocytes for cellular magnetic resonance imaging using a single FDA-approved agent. *Nanomedicine.* 2006; 2:89–94. [PubMed: 17292120]

20. Kircher MF, et al. *In vivo* high resolution three-dimensional imaging of antigen-specific cytotoxic T-lymphocyte trafficking to tumors. *Cancer Res.* 2003; 63:6838–6846. [PubMed: 14583481]
21. Daldrup-Link HE, et al. *In vivo* tracking of genetically engineered, anti-HER2/neu directed natural killer cells to HER2/neu positive mammary tumors with magnetic resonance imaging. *Eur Radiol.* 2005; 15:4–13. [PubMed: 15616814]
22. Moore A, et al. MRI of insulinitis in autoimmune diabetes. *Magn Reson Med.* 2002; 47:751–758. [PubMed: 11948737]
23. Anderson SA, et al. Magnetic resonance imaging of labeled T-cells in a mouse model of multiple sclerosis. *Ann Neurol.* 2004; 55:654–659. [PubMed: 15122705]
24. Baumjohann D, et al. *In vivo* magnetic resonance imaging of dendritic cell migration into the draining lymph nodes of mice. *Eur J Immunol.* 2006; 36:2544–2555. [PubMed: 16909432]
25. Rohani R, et al. *In vivo* cellular MRI of dendritic cell migration using micrometer-sized iron oxide (MPIO) particles. *Mol Imaging Biol.* 2011; 13:679–694. [PubMed: 20803172]
26. Long CM, van Laarhoven HW, Bulte JW, Levitsky HI. Magnetovaccination as a novel method to assess and quantify dendritic cell tumor antigen capture and delivery to lymph nodes. *Cancer Res.* 2009; 69:3180–3187. [PubMed: 19276358]
27. Shapiro EM, Medford-Davis LN, Fahmy TM, Dunbar CE, Koretsky AP. Antibody-mediated cell labeling of peripheral T cells with micron-sized iron oxide particles (MPIOs) allows single cell detection by MRI. *Contrast Media Mol Imaging.* 2007; 2:147–153. [PubMed: 17541955]
28. Heyn C, et al. *In vivo* magnetic resonance imaging of single cells in mouse brain with optical validation. *Magn Reson Med.* 2006; 55:23–29. [PubMed: 16342157]
29. Chan TW, Eley C, Liberti P, So A, Kressel HY. Magnetic resonance imaging of abscesses using lipid-coated iron oxide particles. *Investigative Radiol.* 1992; 27:443–449.
30. Dousset V, et al. MR imaging of relapsing multiple sclerosis patients using ultra-small-particle iron oxide and compared with gadolinium. *AJNR Am J Neuroradiol.* 2006; 27:1000–1005. [PubMed: 16687532]
31. Vellinga MM, et al. Pluriformity of inflammation in multiple sclerosis shown by ultra-small iron oxide particle enhancement. *Brain.* 2008; 131:800–807. [PubMed: 18245785]
32. Sosnovik DE, Nahrendorf M. Cells and iron oxide nanoparticles on the move: magnetic resonance imaging of monocyte homing and myocardial inflammation in patients with ST-elevation myocardial infarction. *Circ Cardiovasc Imaging.* 2012; 5:551–554. [PubMed: 22991284]
33. Gaglia JL, et al. Noninvasive imaging of pancreatic islet inflammation in type 1A diabetes patients. *J Clin Invest.* 2011; 121:442–445. [PubMed: 21123946]
34. Luciani A, et al. Adipose tissue macrophages: MR tracking to monitor obesity-associated inflammation. *Radiology.* 2012; 263:786–793. [PubMed: 22523321]
35. Kanno S, et al. Macrophage accumulation associated with rat cardiac allograft rejection detected by magnetic resonance imaging with ultrasmall superparamagnetic iron oxide particles. *Circulation.* 2001; 104:934–938. [PubMed: 11514382]
36. Harisinghani MG, et al. Noninvasive detection of clinically occult lymph-node metastases in prostate cancer. *New Engl J Med.* 2003; 348:2491–2499. [PubMed: 12815134]
37. Kooi ME, et al. Accumulation of ultrasmall superparamagnetic particles of iron oxide in human atherosclerotic plaques can be detected by *in vivo* magnetic resonance imaging. *Circulation.* 2003; 107:2453–2458. [PubMed: 12719280]
38. Siglienti I, Bendszus M, Kleinschnitz C, Stoll G. Cytokine profile of iron-laden macrophages: implications for cellular magnetic resonance imaging. *J Neuroimmunol.* 2006; 173:166–173. [PubMed: 16380168]
39. Verdijk P, et al. Sensitivity of magnetic resonance imaging of dendritic cells for *in vivo* tracking of cellular cancer vaccines. *Int J Cancer.* 2007; 120:978–984. [PubMed: 17163419]
40. de Vries IJM, et al. Magnetic resonance tracking of dendritic cells in melanoma patients for monitoring of cellular therapy. *Nature Biotech.* 2005; 23:1407–1413.
41. Weissleder R, et al. Superparamagnetic iron oxide: pharmacokinetics and toxicity. *AJR Am J Roentgenol.* 1989; 152:167–173. [PubMed: 2783272]

42. Riess JG. Oxygen carriers (“blood substitutes”) — raison d’être, chemistry, and some physiology. *Chem Rev.* 2001; 101:2797–2919. [PubMed: 11749396]
43. Janjic JM, Ahrens ET. Fluorine-containing nanoemulsions for MRI cell tracking. *Wiley Interdiscip Rev Nanomed Nanobiotechnol.* 2009; 1:492–501. [PubMed: 19920872]
44. Holland GN, Bottomley PA, Hinshaw WS. F-19 magnetic-resonance imaging. *J Magn Reson.* 1977; 28:133–136.
45. Ahrens ET, Flores R, Xu HY, Morel PA. *In vivo* imaging platform for tracking immunotherapeutic cells. *Nature Biotech.* 2005; 23:983–987.
46. Bulte JWM. Hot spot MRI emerges from the background. *Nature Biotech.* 2005; 23:945–946.
47. Janjic JM, Srinivas M, Kadayakkara DK, Ahrens ET. Self-delivering nanoemulsions for dual fluorine-19 MRI and fluorescence detection. *J Am Chem Soc.* 2008; 130:2832–2841. [PubMed: 18266363]
48. Srinivas M, et al. *In vivo* cytometry of antigen-specific t cells using 19F MRI. *Magn Reson Med.* 2009; 62:747–753. [PubMed: 19585593]
49. Helfer BM, et al. Functional assessment of human dendritic cells labeled for *in vivo* F-19 magnetic resonance imaging cell tracking. *Cytotherapy.* 2010; 12:238–250. [PubMed: 20053146]
50. Srinivas M, Morel PA, Ernst LA, Laidlaw DH, Ahrens ET. Fluorine-19 MRI for visualization and quantification of cell migration in a diabetes model. *Magn Reson Med.* 2007; 58:725–734. [PubMed: 17899609]
51. Kadayakkara DK, et al. Inflammation driven by overexpression of the hypoglycosylated abnormal mucin 1 (MUC1) links inflammatory bowel disease and pancreatitis. *Pancreas.* 2010; 39:510–515. [PubMed: 20084048]
52. Ahrens ET, Young WB, Xu H, Pusateri LK. Rapid quantification of inflammation in tissue samples using perfluorocarbon emulsion and fluorine-19 nuclear magnetic resonance. *Biotechniques.* 2011; 50:229–234. [PubMed: 21548906]
53. Kadayakkara DK, Ranganathan S, Young WB, Ahrens ET. Assaying macrophage activity in a murine model of inflammatory bowel disease using fluorine-19 MRI. *Lab Invest.* 2012; 92:636–645. [PubMed: 22330343]
54. Hertlein T, et al. Visualization of abscess formation in a murine thigh infection model of *Staphylococcus aureus* by F-19-magnetic resonance imaging (MRI). *PLoS ONE.* 2011; 6:e18246. [PubMed: 21455319]
55. Hitchens TK, et al. 19F MRI detection of acute allograft rejection with *in vivo* perfluorocarbon labeling of immune cells. *Magn Reson Med.* 2011; 65:1144–1153. [PubMed: 21305593]
56. Fogel U, et al. Noninvasive detection of graft rejection by *in vivo* ¹⁹F MRI in the early stage. *Am J Transplant.* 2011; 11:235–244. [PubMed: 21214858]
57. Noth U, et al. Perfluoro-15-crown-5-ether labelled macrophages in adoptive transfer experimental allergic encephalomyelitis. *Artif Cells Blood Substit Immobil Biotechnol.* 1997; 25:243–254. [PubMed: 9167839]
58. Weise G, Basse-Luesebink TC, Wessig C, Jakob PM, Stoll G. *In vivo* imaging of inflammation in the peripheral nervous system by ¹⁹F MRI. *Exp Neurol.* 2011; 229:494–501. [PubMed: 21459088]
59. Ebner B, et al. Early assessment of pulmonary inflammation by ¹⁹F MRI *in vivo*. *Circ Cardiovasc Imag.* 2010; 3:U202–U109.
60. Fogel U, et al. *In vivo* monitoring of inflammation after cardiac and cerebral ischemia by fluorine magnetic resonance imaging. *Circulation.* 2008; 118:140–148. [PubMed: 18574049]
61. O’Hanlon CE, Amede KG, O’Hear MR, Janjic JM. NIR-labeled perfluoropolyether nanoemulsions for drug delivery and imaging. *J Fluor Chem.* 2012; 137:27–33. [PubMed: 22675234]
62. Morel PA, et al. Gene expression analysis of dendritic cells that prevent diabetes in NOD mice: analysis of chemokines and costimulatory molecules. *J Leukoc Biol.* 2011; 90:539–550. [PubMed: 21628331]
63. Tannous BA, et al. Metabolic biotinylation of cell surface receptors for *in vivo* imaging. *Nature Methods.* 2006; 3:391–396. [PubMed: 16628210]
64. Weissleder R, et al. *In vivo* magnetic resonance imaging of transgene expression. *Nature Med.* 2000; 6:351–355. [PubMed: 10700241]

65. Bar-Shir A, et al. Transforming thymidine into a magnetic resonance imaging probe for monitoring gene expression. *J Am Chem Soc.* 2013; 135:1617–1624. [PubMed: 23289583]
66. Ahrens, ET. Contrast agents for magnetic resonance imaging and methods related thereto. US Patent. 10/384,496. 2003.
67. Genove G, DeMarco U, Xu HY, Goins WF, Ahrens ET. A new transgene reporter for *in vivo* magnetic resonance imaging. *Nature Med.* 2005; 11:450–454. [PubMed: 15778721]
68. Cohen B, Dafni H, Meir G, Harmelin A, Neeman M. Ferritin as an endogenous MRI reporter for noninvasive imaging of gene expression in C6 glioma tumors. *Neoplasia.* 2005; 7:109–117. [PubMed: 15802016]
69. Iordanova B, Ahrens ET. *In vivo* magnetic resonance imaging of ferritin-based reporter visualizes native neuroblast migration. *Neuroimage.* 2012; 59:1004–1012. [PubMed: 21939774]
70. Gilad AA, et al. Artificial reporter gene providing MRI contrast based on proton exchange. *Nature Biotech.* 2007; 25:217–219.
71. Sherry AD, Woods M. Chemical exchange saturation transfer contrast agents for magnetic resonance imaging. *Annu Rev Biomed Eng.* 2008; 10:391–411. [PubMed: 18647117]
72. Chan KW, et al. MRI-detectable pH nanosensors incorporated into hydrogels for *in vivo* sensing of transplanted-cell viability. *Nature Mater.* 2013; 12:268–275. [PubMed: 23353626]
73. Airan RD, et al. MRI biosensor for protein kinase A encoded by a single synthetic gene. *Magn Reson Med.* 2012; 68:1919–1923. [PubMed: 23023588]
74. Kadayakkara DK, Janjic JM, Pusateri LK, Young WB, Ahrens ET. *In vivo* observation of intracellular oximetry in perfluorocarbon-labeled glioma cells and chemotherapeutic response in the CNS using fluorine-19 MRI. *Magn Reson Med.* 2010; 64:1252–1259. [PubMed: 20860007]
75. Sotak CH, et al. A new perfluorocarbon for use in fluorine-19 magnetic resonance imaging and spectroscopy. *Magn Reson Med.* 1993; 29:188–195. [PubMed: 8429782]
76. Zhong J, Sakaki M, Okada H, Ahrens ET. *In vivo* intracellular oxygen dynamics in murine brain glioma and immunotherapeutic response of cytotoxic T cells observed by fluorine-19 magnetic resonance imaging. *PLoS One.* 2013; 8:e59479. [PubMed: 23667419]
77. Partlow KC, et al. F-19 magnetic resonance imaging for stem/progenitor cell tracking with multiple unique perfluorocarbon nanobeacons. *FASEB J.* 2007; 21:1647–1654. [PubMed: 17284484]
78. Gilad AA, et al. Feasibility of concurrent dual contrast enhancement using CEST contrast agents and superparamagnetic iron oxide particles. *Magn Reson Med.* 2009; 61:970–974. [PubMed: 19189296]
79. Liu G, et al. *In vivo* multicolor molecular MR imaging using diamagnetic chemical exchange saturation transfer liposomes. *Magn Reson Med.* 2012; 67:1106–1113. [PubMed: 22392814]
80. Bulte JW. *In vivo* MRI cell tracking: clinical studies. *AJR Am J Roentgenol.* 2009; 193:314–325. [PubMed: 19620426]
81. Richards JMJ, et al. Clinical cell tracking of mononuclear cells using magnetic resonance imaging and superparamagnetic particles of iron oxide. *Br J Surg.* 2011; 98:4–4. [PubMed: 20812233]
82. Keupp J, et al. Simultaneous dual-nuclei imaging for motion corrected detection and quantification of 19F imaging agents. *Magn Reson Med.* 2011; 66:1116–1122. [PubMed: 21394779]
83. Aarntzen EH, et al. *In vivo* tracking techniques for cellular regeneration, replacement, and redirection. *J Nucl Med.* 2012; 53:1825–1828. [PubMed: 23143090]
84. Bulte JW, et al. MPI cell tracking: what can we learn from MRI? *Proc Soc Photo-Opt Instrum Eng.* 2011; 7965:79650z.

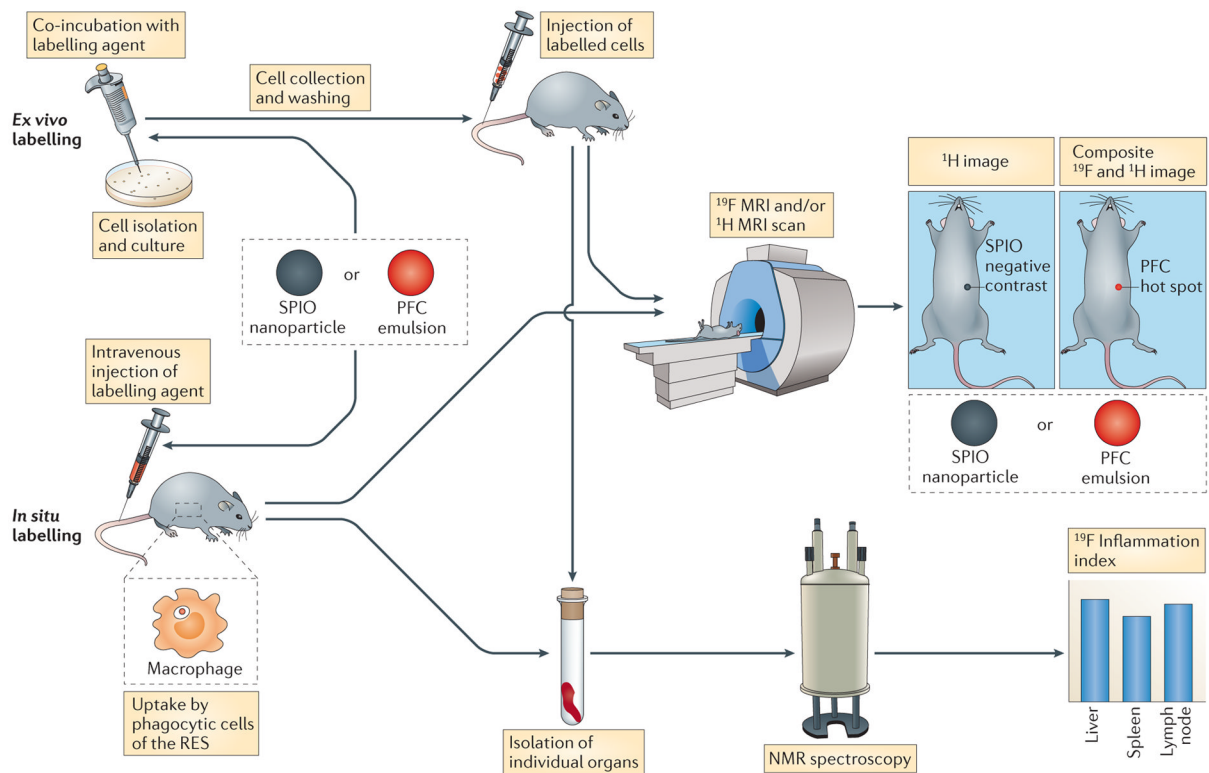


Figure 1. Schematic showing *ex vivo* and *in situ* labelling of cells with magnetic resonance nanoparticle contrast agents

Cell labelling can be achieved *ex vivo* in pre-selected and cultured cells by adding the labelling reagent — superparamagnetic iron oxide (SPIO) nanoparticles or perfluorocarbon (PFC) emulsion — directly to the media followed by co-incubation. Often the labelling reagent is complexed with a cationic transfection agent before it is added to the cell culture to label non-phagocytic cells. Self-delivering formulations of PFC emulsions have also been devised that do not require a transfection agent. Alternatively, electroporation can be used to label cells in culture. After collection and washing, labelled cells are then administered to the subject. In addition, the labelling agent can be intravenously injected; in this *in situ* labelling approach, the agent is intrinsically taken up by phagocytic cells of the reticuloendothelial (RES) system, particularly by monocytes and macrophages, which then accumulate at sites of inflammation. For both *ex vivo* and *in situ* labelling approaches an ^1H magnetic resonance imaging (MRI) scan is then carried out to visualize the anatomy. The resulting images have a decreased signal in regions containing SPIO-labelled cells (known as negative contrast). In the case of PFC probes, a ^{19}F MRI scan is also acquired in the same imaging session. A composite, pseudo-coloured ^{19}F and ^1H image is then constructed, in which labelled cells appear in the ^{19}F colour channel (known as hot spot contrast). By quantifying the ^{19}F MRI signal in individual organs using nuclear magnetic resonance (NMR) spectroscopy an inflammation index can be calculated, which is a direct correlation between the ^{19}F signal and the number of labelled macrophages.

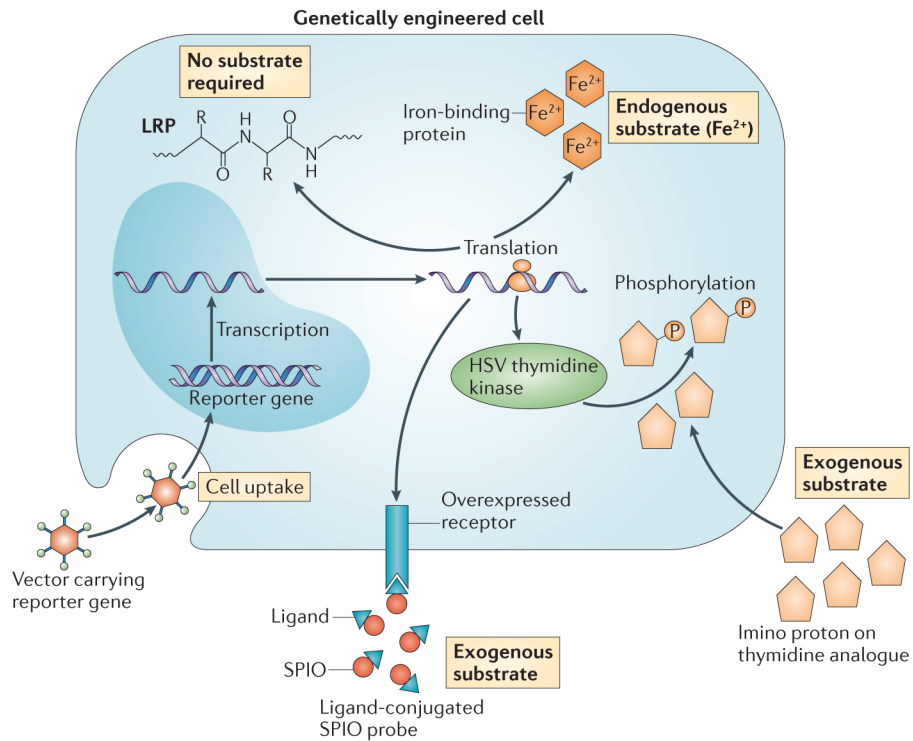


Figure 2. The development of MRI reporter genes

Certain nucleic acid-based reporters encode cell surface receptors that bind to specific ligands that are conjugated to superparamagnetic iron oxide (SPIO) to render them magnetic resonance imaging (MRI)-detectable. They require delivery of the ligand–SPIO complex as an exogenous substrate. An example of this approach is an engineered transferrin receptor that binds transferrin-ligated SPIO. Another exogenous substrate-based approach involves a reporter gene encoding the thymidine kinase enzyme derived from herpes simplex virus (HSV). This enzyme phosphorylates thymidine analogues, which causes them to remain trapped in transduced cells. When thymidine analogues are used that are rich in specific (imino) protons, chemical exchange saturation transfer (CEST) MRI can be used to track the transduced cells. Other approaches use endogenous substrates, whereby the encoded reporter binds iron (Fe^{2+}) that is naturally present in the body as the contrasting metal ion. Finally, a CEST reporter (such as lysine-rich protein (LRP)) can be used that does not require a substrate, as the protein itself contains multiple labile amide protons that can be saturated and detected.

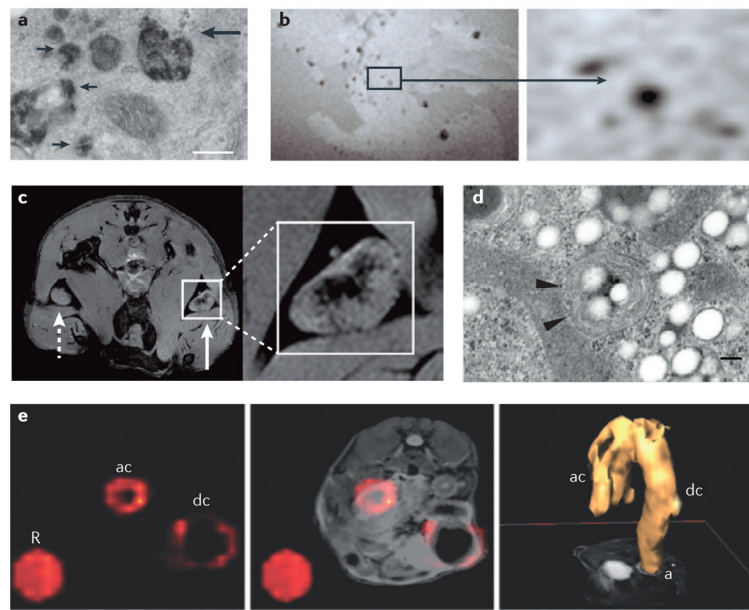


Figure 3. Tracking immune cells with MRI using SPIO nanoparticles and PFC emulsions

a | Intracellular labelling of mononuclear cells with magnetoliposomes is shown¹³. The electron micrograph shows superparamagnetic iron oxide (SPIO) particles in secondary lysosomes (small arrows) and in primary lysosomes that are fusing with endosomes (large arrow). The scale bar represents 200 nm. **b** | Imaging of a non-obese diabetic (NOD) severe combined immunodeficient (SCID) mouse pancreas *ex vivo* is shown following the adoptive transfer of SPIO-labelled T cells²². Image hypointensities represent infiltrating T cells that are observed at 24 hours post transfer. **c** | Imaging of *in vivo* antigen capture and trafficking of dendritic cells (DCs) is shown²⁶. Sentinel DCs were labelled *in situ* by intradermal injection of unlabelled (dashed arrow) or SPIO-labelled (solid arrow) irradiated cancer cells, which function as a vaccine. Following phagocytosis of both SPIO particles and tumour antigens in a process known as magnetovaccination, the hypointense DCs migrate into the medulla of the draining popliteal lymph node, as observed on day 8. **d** | An electron micrograph of a perfluorocarbon (PFC)-labelled DC is shown. Numerous bright spots (PFC droplets) are observed inside the cell. Particles appear as smooth spheroids⁴⁵. Arrowheads indicate vesicles. The scale bar represents 200 nm. **e** | Inflammatory bowel disease (IBD) in an interleukin-10 (*Il10*)^{-/-} mouse model was visualized using *in situ* PFC labelling and ¹⁹F magnetic resonance imaging (MRI) *in vivo*⁵³. The ¹⁹F image (pseudo-colour) is shown on the far left, the composite ¹H and ¹⁹F image is shown in the middle and a three-dimensional rendering of the *in vivo* ¹⁹F MRI data from the abdomen is shown on the far right. A reference tube that contains PFC emulsion (R) was placed alongside the torso of the mouse. The images through the abdomen show PFC accumulation (indicating inflammation) in the ascending colon (ac) and descending colon (dc), where (a) is the anus. Part **a** is reproduced, with permission, from REF. 13 © (1993) John Wiley and Sons. Part **b** is reproduced, with permission, from REF. 22 © (2002) John Wiley and Sons. Part **c** is reproduced, with permission, from REF. 26 © (2009) American Association for Cancer Research. Part **d** is reproduced, with permission, from REF. 45 © (2005) Macmillan Publishers Ltd. All rights reserved. Part **e** is reproduced, with permission, from REF. 52 © (2012) Macmillan Publishers Ltd. All rights reserved.

Table 1

Comparison of non-invasive imaging modalities for *in vivo* cell tracking

Imaging technique	Resolution *	Tissue penetration depth *	Sensitivity of cell detection *	Possibility of longitudinal studies *	Used generally in the clinic?	Used in clinical cell tracking?
MRI	+++	+++	+++	++	Yes	Yes
SPECT	+	+++	++	+	Yes	Yes
PET	+	+++	++	+++	Yes	Yes
CT or X-ray	+++	+++	+	+	Yes	No
Ultrasound imaging	++	++	++	+	Yes	No
BLI	+	+	++	+++	No	No
Fluorescence imaging or NIR	+	+	++	++	No	No
2PLSM	+++	+	+++	++	No	No
MPI ⁸⁴	+	+++	++	++	No	No

2PLSM, two-photon laser scanning microscopy; BLI, bioluminescence imaging; CT, computed tomography; MPI, magnetic particle imaging; MRI, magnetic resonance imaging; NIR, near-infrared imaging; PET, positron emission tomography; SPECT, single-photon emission computed tomography.

* Strengths and weaknesses are given using a relative scale in which + = poor, ++ = moderate and +++ = excellent.

Table 2

Overview of available *in vivo* MRI-based cell tracking techniques

Probe	MRI technique	Type of contrast	Minimum number of detectable cells	Quantification of cell number?	Clinical trial approval?
Gd ³⁺ or Mn ²⁺ labelling	T1-weighted ¹ H MRI*	Positive	~10 ³	No	No
SPIO labelling	T2-weighted ¹ H MRI [‡]	Negative	1	No	Yes (in the Netherlands, China, Switzerland, Czech Republic, Israel, Poland and United Kingdom)
PFC labelling	¹⁹ F MRI	Hot spot (also known as tracer)	10 ³ –10 ⁵	Yes	Yes (in USA)
Metal-binding reporter genes	T2-weighted ¹ H MRI [‡]	Negative	10 ⁴	No	No
CEST agents and reporter genes	¹ H CEST MRI	Differential (can be colour encoded)	10 ⁴	No	No

CEST, chemical exchange saturation transfer; MRI, magnetic resonance imaging; PFC, perfluorocarbon; SPIO, superparamagnetic iron oxide.

* T1 is the nuclear spin–lattice relaxation time.

[‡] T2 is the spin–spin relaxation time.