

# A New Sebecid from the Paleogene of Brazil and the Crocodyliform Radiation after the K–Pg Boundary

Alexander W. A. Kellner<sup>1\*</sup>, André E. P. Pinheiro<sup>2</sup>, Diogenes A. Campos<sup>3</sup>

**1** Laboratório de Sistemática e Tafonomia de Vertebrados Fósseis - Departamento de Geologia e Paleontologia, Museu Nacional - Universidade Federal do Rio de Janeiro, Rio de Janeiro, Brazil, **2** Laboratório de Macrofósseis - Departamento de Geologia, Universidade Federal do Rio de Janeiro, Rio de Janeiro, Brazil, **3** Museu de Ciências da Terra, Serviço Geológico do Brasil - Companhia de Pesquisa de Recursos Minerais, Rio de Janeiro, Brazil

## Abstract

A new crocodyliform, *Sahitisuchus fluminensis* gen. et sp. nov., is described based on a complete skull, lower jaw and anterior cervical vertebrae collected in the São José de Itaboraí Basin of Rio de Janeiro, Brazil. The specimen is one of the best preserved crocodyliforms from Paleocene deposits recovered so far and represents a sebecosuchian, one of the few clades that survived the Cretaceous-Paleogene biotic crisis. The new taxon is found in the same deposit as an alligatoroid, a group that experienced large diversification in the Paleogene. The sebecosuchian record suggests that after the Cretaceous-Paleogene biotic crisis, the less specialized members of this clade characterized by a higher number of teeth compared to the baurusuchid sebecosuchians survived, some having terrestrial habits while others developed a semi-aquatic life style (e.g., *Lorosuchus*). Starting in the Eocene, sebecid sebecosuchians became specialized with a more accentuated oreinirostry as observed in *Sebecus* and in *Langstonia*, but not showing the typical reduced dentition developed by the Cretaceous baurusuchid sebecosuchians. The basal position of *Barinasuchus arveloi*, a high-snouted Miocene sebecid, indicates the occurrence of an independent lineage sometime after the K-Pg biotic crisis that developed accentuated oreinirostry, suggesting a more complex history of the post-K-Pg crocodyliform radiation.

**Citation:** Kellner AWA, Pinheiro AEP, Campos DA (2013) A New Sebecid from the Paleogene of Brazil and the Crocodyliform Radiation after the K–Pg Boundary. PLoS ONE 9(1): e81386. doi:10.1371/journal.pone.0081386

**Editor:** Peter Dodson, University of Pennsylvania, United States of America

**Received:** July 5, 2013; **Accepted:** October 10, 2013; **Published:** January 15, 2014

**Copyright:** © 2013 Kellner et al. This is an open-access article distributed under the terms of the Creative Commons Attribution License, which permits unrestricted use, distribution, and reproduction in any medium, provided the original author and source are credited.

**Funding:** AWAK acknowledges the Fundação Carlos Chagas Filho de Amparo à Pesquisa do Estado do Rio de Janeiro (FAPERJ nos. E-26/102.779/2008 and E-26/111.273/2010) and the Conselho Nacional de Desenvolvimento Científico e Tecnológico (CNPq no. 307276/2009-0). The funders had no role in study design, data collection and analysis, decision to publish, or preparation of the manuscript.

**Competing Interests:** The authors have declared that no competing interests exist.

\* E-mail: kellner@mn.ufrj.br

## Introduction

Currently crocodyliforms are worldwide distributed in tropical and subtropical regions in relative low numbers and diversity, consisting of 24 to 30 species (e.g. [1]). All are considered semiaquatic ambushers but their fossil record reveals a much richer evolutionary history in terms of anatomy and ecomorphospaces [2,3]. Particularly during the Cretaceous, the diversity of those reptiles was much higher and they occupied several distinct niches.

As a natural question, researchers tried to understand the crocodyliform decrease in diversity after the Cretaceous-Paleocene (K-Pg) extinction crisis but this discussion is hampered by the scarce nature of their remains in Paleocene deposits (e.g. [4]). Besides the marine dyrosaurids that have survived the K-Pg boundary and diversified during the Paleocene (e.g. [5,6]), there are only a limited number of Paleocene specimens described so far, most of which are fragmentary and poorly preserved (e.g. [4,7–9]). This contrasts with the high abundance of Late Cretaceous crocodyliforms, particularly in Brazil, which is even higher than in other Gondwanan areas.

During the exploration of the São José de Itaboraí Basin (Rio de Janeiro State, Southeast Brazil) that lasted for about five decades and ended in 1984 [10], hundreds of fossil vertebrates were collected (Figure 1). The vast majority is housed at the Earth Science Museum (now at the Companhia de Pesquisa de Recursos

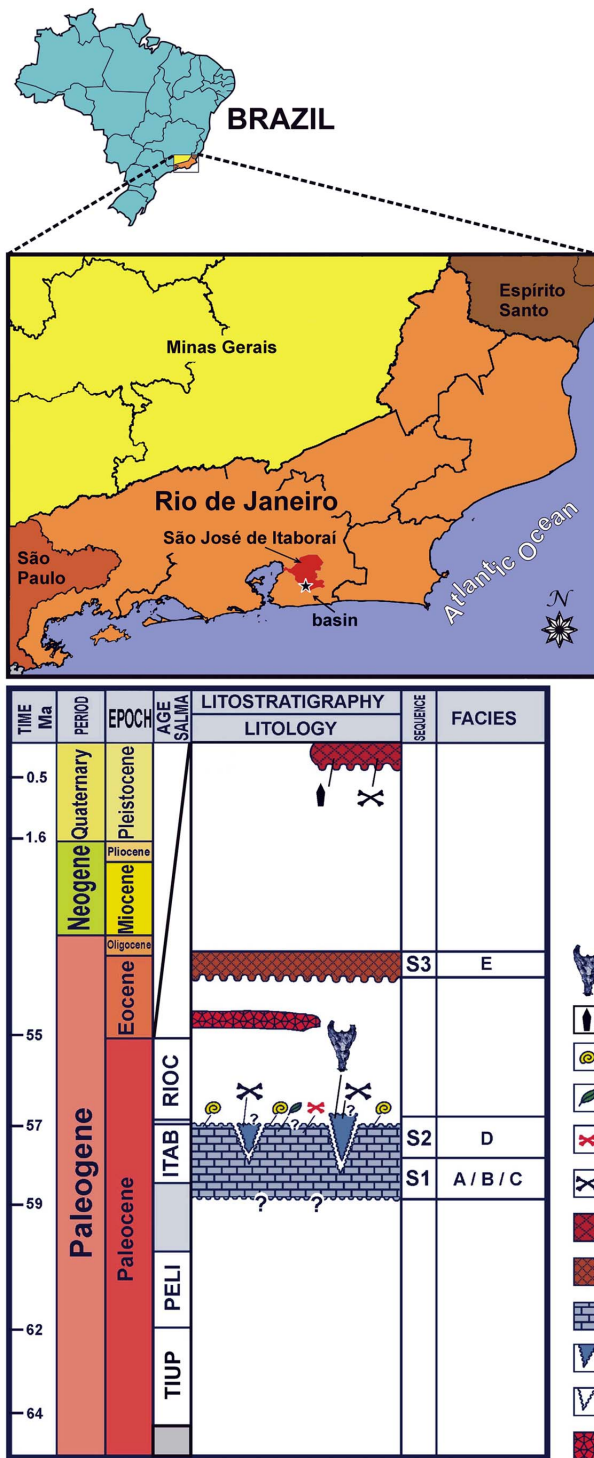
Minerais – CPRM), in Rio de Janeiro, and consists of fragmentary remains representing mainly mammals (e.g. [11,12]). However, some reptiles have also been collected, including the remains of crocodyliforms [13,14], with only one species formally proposed so far [15].

Among the few well preserved and more complete crocodyliform material is an almost complete skull and lower jaw (MCT 1730-R) that was briefly mentioned (but never figured) in the literature [8,13,16] and remained undescribed until now. This specimen represents a new taxon, *Sahitisuchus fluminensis* gen. et sp. nov., and shows that during the Paleocene the São José de Itaboraí crocodyliform fauna was composed by rather primitive (i.e., Sebecosuchia) and more derived (Alligatoridae) post-K-Pg taxa. Such a combination of sebecosuchians and eusuchians has not been previously reported in any deposit so far.

## Materials and Methods

### Phylogenetic Analysis

In order to access the phylogenetic position of *Sahitisuchus fluminensis* gen. et sp. nov., a phylogenetic analysis was performed using the data matrix published by Pol et al. (2012) [17]. Regarding *Sebecus*, we have followed Paolillo & Linares [9], who have restricted this genus to the type species (*Sebecus icaerohinus*) and regarded “*S.* huilensis as belonging to the genus *Langstonia*. A total of 89 crocodyliform taxa including the new species and 347



**Figure 1. Itaboraí Basin location (A); (B) Itaboraí Basin lithochronostratigraphic column.** 1, ankaramite layer; 2, karst channels and fissures; 3, infilling fissures (Sequence S2, Facies D); 4, main calcareous deposit (Sequence S1, Facies A, B and C); 5, alluvial deposits (Sequence S3, Facies E); 6, clastic sediments; 7, abundant vertebrate fossils; 8, rare vertebrate fossils; 9, plant remains; 10, terrestrial gastropod fossils; 11, archaeological artifacts; 12, *Sahitiusuchus fluminensis* gen. et sp. nov. (MCT 1730-R). Stratigraphic column modified after [12,21].

doi:10.1371/journal.pone.0081386.g001

characters were used. Parsimony analyses using TNT [18] with heuristics search strategy (10.000 replicates of Wagner trees, 15.000 max. tree in memory) by TBR algorithm were performed. The analyses were run using unordered and ordered characters (1, 3, 6, 10, 23, 37, 43, 44, 45, 49, 65, 67, 69, 73, 77, 79, 86, 90, 91, 96, 97, 104, 105, 106, 108, 116, 126, 140, 142, 143, 149, 167, 176, 182, 197, 226, and 339). Information for *Sahitiusuchus fluminensis* gen. et sp. nov. used in the data matrix [17] is as follows:

```

10[0/1]????12 ???0??-000 11011[0/1][0/1]00? 0100022110
100011?11? 1101010?10
?0103?[1/2]12- [2/3]10?101?21 ???????1? ?0???????? ??[1/
2]01?00?? ?1????[0/1]10
01??????0? ??0?00?01 0[0/1]2?1?001 010[0/1]11?1?0
?1?0?0110- 1?01???110
[0/1]?10000?0 0101?10010 0001?0[0/1]0001 01?1000010
????0????? [0/1]0010[0/1]????
???0?0000 0100?0?0?? ?10?00?01? -???00?010 0?????[0/1]00
0001010??? ??????????
?????????? ??????????? ??????????? ??????????
    
```

For more information see Supporting Information (Data S1, Figures S1 and S2).

### Nomenclatural Acts

The electronic edition of this article conforms to the requirements of the amended International Code of Zoological Nomenclature, and hence the new names contained herein are available under that Code from the electronic edition of this article. This published work and the nomenclatural acts it contains have been registered in ZooBank, the online registration system for the ICZN. The ZooBank LSIDs (Life Science Identifiers) can be resolved and the associated information viewed through any standard web browser by appending the LSID to the prefix “http://zoobank.org/”. The LSID for this publication is: urn:lsid:zoobank.org:pub: 322EE489-D9D2-4CE6-9DAF-36E30C03881D. The electronic edition of this work was published in a journal with an ISSN, and has been archived and is available from the following digital repositories: PubMed Central, LOCKSS.

No permits were required for the described study, which complied with all relevant regulations. See appropriate section of Systematic Paleontology for locality, stratigraphic, repository and specimen number.

### Results

#### Systematic Paleontology

**Mesoeucrocodylia** Whetstone & Whybrow, 1983 [19], *sensu* Benton & Clark, 1988 [20]

**Sebecosuchia** Simpson, 1937 [7]

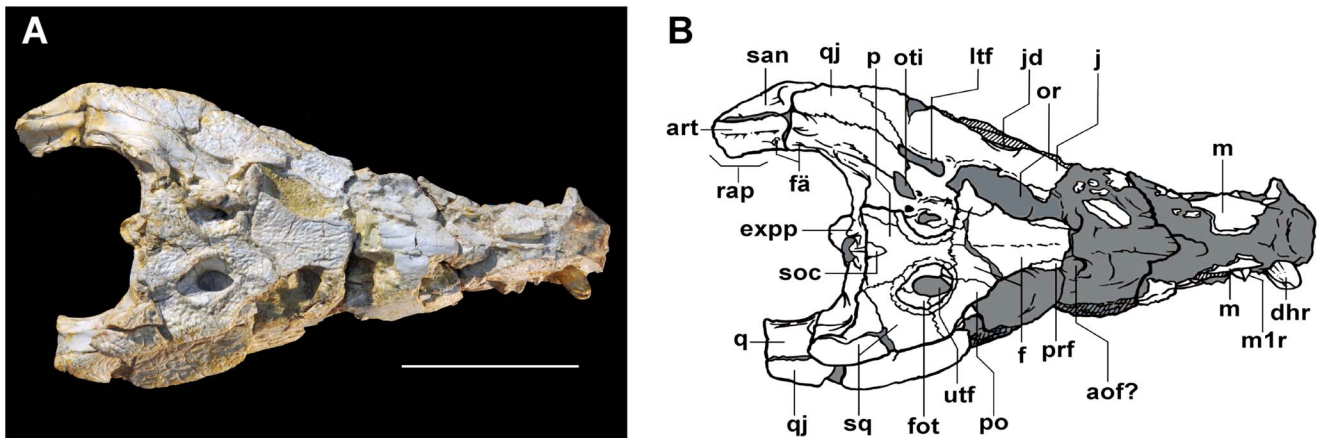
**Sebecidae** Simpson, 1937 [7]

***Sahitiusuchus fluminensis* gen. et sp. nov.**

urn:lsid:zoobank.org:act:10A04487-436F-4509-BFDD-42B4DF6B8177

**Derivation of name.** Generic name *Sahiti* comes from the Xavante culture (sahi ti), one of the indigenous Brazilian inhabitants, meaning “to be angry” or “to be brave”, in allusion to warriors; and *suchos*, refers to the Egyptian crocodile god. Specific name *fluminensis* is a latinization of fluminense, designation of citizens born in the Rio de Janeiro State.

**Type species.** Almost complete skull and lower jaw, proatlans, intercentrum, the axis and the 3<sup>rd</sup> cervical vertebra (MCT 1730-R), housed at the Museu de Ciências da Terra, Companhia de Pesquisas de Recursos Minerais (CPRM), Rio de Janeiro, Brazil (cast at the Museu Nacional/UFRJ - MN 4711-V).



**Figure 2. *Sahitisuchus fluminensis* gen. et sp. nov. (MCT 1730-R), in dorsal view.** A, photo; B, illustration. 9–12th mlt, eighth to eleven left maxillary teeth; **an**, angular; **anr**, angular ridge; **afo**, mandibular adductor fossa; **aof?**, antorbital fenestra?; **art**, articular; **bs**, basisphenoid; **bo**, basioccipital; **boc**, basioccipital middle crest; **bot**, basioccipital basal tubera; **chg**, choanal groove; **cq**, cranio-quadrato passage; **d**, dentary; **dhl**, left hypertrophied replacement tooth; **dhr**, right hypertrophied dentary tooth; **ec**, ectopterygoid; **exp**, exoccipital posterior process; **f**, frontal; **fa**, foramen aereum; **fcp**, foramen caroticum posterius; **fic**, foramen intermandibularis caudalis; **fme**, median Eustachian foramen; **fot**, upper temporal fossa; **fra**, fractured area; **fv**, foramen vagi; **int**, intercentrum; **j**, jugal; **jd**, jugal latero-ventral depression; **l**, lachrymal; **lptyp**, lateral pterygoid process (flange); **ltf**, laterotemporal fenestra; **m**, maxilla; **m1l**, first left maxillary tooth; **m1r**, first right maxillary tooth; **m3l**, third left maxillary tooth; **m3r**, third right maxillary tooth; **m4l**, fourth left maxillary tooth; **m5l**, fifth left maxillary tooth; **nc**, nuchal crest; **occ**, occipital condyle; **or**, orbit; **oti**, otic incisure; **oto**, otoccipital; **p**, parietal; **pl**, palatine; **pmt**, posterior maxillary teeth; **po**, postorbital; **pop**, para-occipital process; **pfr**, prefrontal; **pro**, proatlas; **pty**, pterygoid; **q**, quadrate; **qd**, quadrate depression; **qdc**, quadrate dorsal crest; **qj**, quadratojugal; **rap**, retroarticular process; **san**, surangular; **sanr**, surangular lateral ridge; **sf**, siphoneal foramen; **soc**, supraoccipital; **sof**, supraoccipital; **spl**, splenial; **sq**, squamosal; **sqp**, squamosal posterior process (squamosal prong); **utf**, upper temporal fenestra; **XII**, twelfth cranial nerve exit. Scale bar: 100 mm. doi:10.1371/journal.pone.0081386.g002

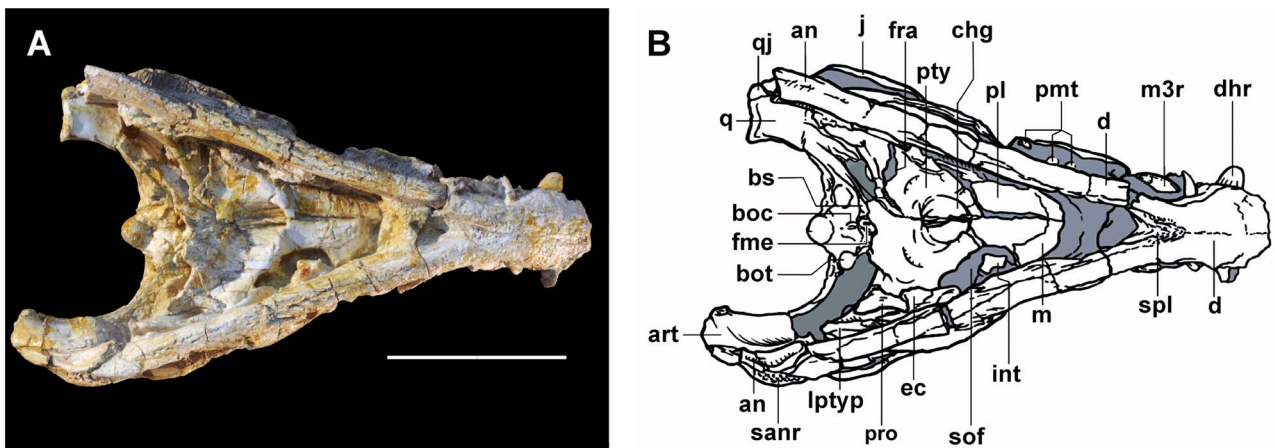
**Type locality, and horizon and age.** São José Farm, São José de Itaboraí Municipal District, ENE in the Rio de Janeiro Metropolitan Area (SE Brazil; 22°50'20"S and 42°52'30"W). Collected in the S2 sequence [21]; Itaboraian SALMA (South American Land Mammals Age), middle Upper Paleocene, 58,2-56,5 Ma [22].

**Diagnosis.** Sebecid crocodyliform with the following autapomorphies: mandible lacking external mandibular fenestra; and odontoid process fused to the axis with vertical anterior surface that lacks medial processes. The new species can be further distinguished from other sebecids by the following combination of characters: infraorbital jugal region with shallow ventrolateral depression (shared with *Lorosuchus*); shallow elliptical depression on

the posterior surface of the quadrate close to the craniomandibular articulation (shared with *Sebecus icaeorhinus*); rough and rugose dorsal edge of supratemporal fossa (shared with *Sebecus icaeorhinus*); sharp, semilunate exoccipital posterior processes, directed medially (shared with *Ayllusuchus*); jugal posterior process higher than anterior process and lateral expanded (shared with *Bretesuchus*); rough longitudinal ridge on the lateroventral edge of angular and dentary, ending close to the mandibular symphysis level (shared with *Bretesuchus*, *Sebecus*).

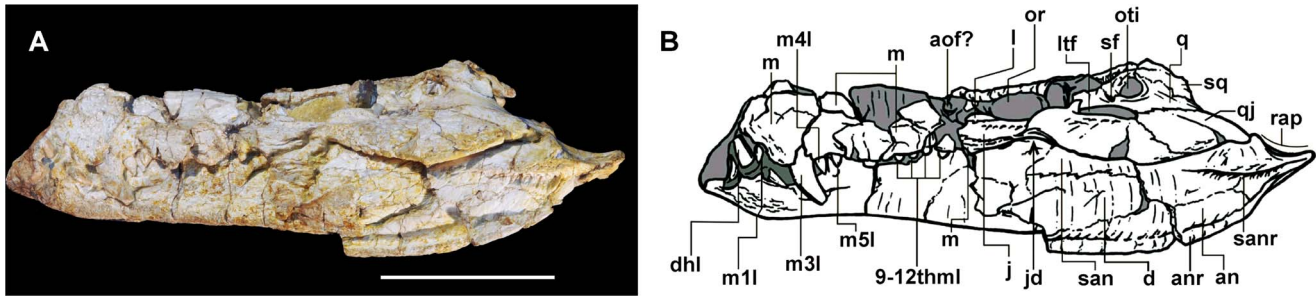
**Description and Comparisons**

Overall the material of *Sahitisuchus fluminensis* is well preserved consisting of the skull, lower jaw and cervical elements



**Figure 3. *Sahitisuchus fluminensis* gen. et sp. nov. (MCT 1730-R), in ventral view.** A, photo; B, illustration. For abbreviations see Figure 1. Scale bar: 100 mm. doi:10.1371/journal.pone.0081386.g003





**Figure 4.** *Sahitisuchus fluminensis* gen. et sp. nov. (MCT 1730-R), in left lateral view. A, photo; B, illustration. For abbreviations see Figure 1. Scale bar: 100 mm. doi:10.1371/journal.pone.0081386.g004

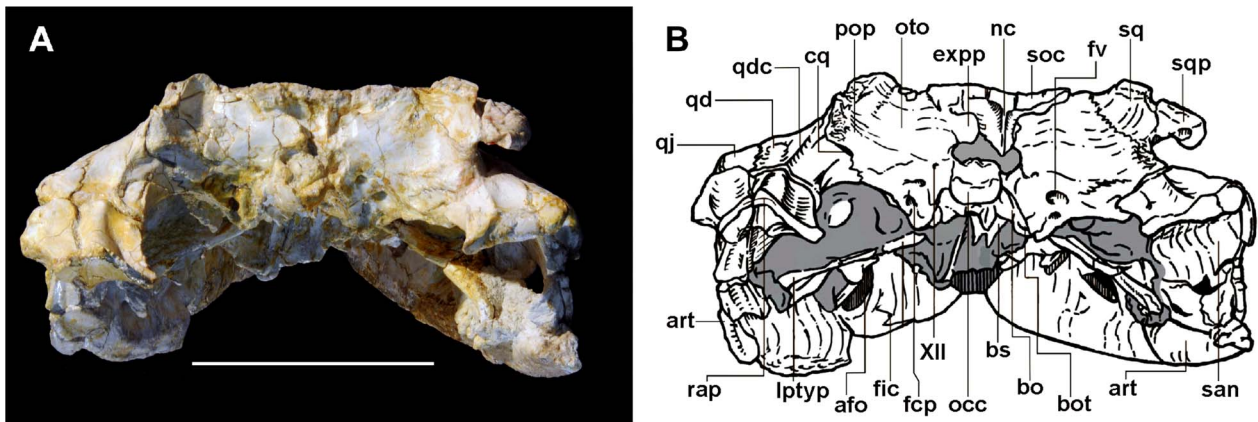
(Figures 2–7; Tables 1, 2). Although some dorsoventral crushing is observable it was not severe to affect the shape of most cranial elements, including the rostral end that kept most of original anatomy. The most affected area was the more posterior portion of the skull, with some elements, particularly the supraoccipital displaced towards the foramen magnum.

The premaxillae and the region of the external nares were broken off and the skull was slightly compressed dorsoventrally during preservation. The lower jaw is occluded with the skull and some bones lack the external bone cortex. In dorsal view, the skull of *Sahitisuchus fluminensis* is elongated, showing two slight constrictions at about the level of the 5th and 11th maxillary alveoli (Figures 2A, B). It differs from *Sebecus icaeorhinus* and *Stolokrosuchus* by being comparatively shorter [23,24], but not as short as *Lorosuchus* [4]. *Sahitisuchus* does not show the same oreinirostral condition as *Sebecus*, *Barinasuchus*, *Bretesuchus*, *Zulmasuchus* and *Langstonia* [8,9,16,23,25].

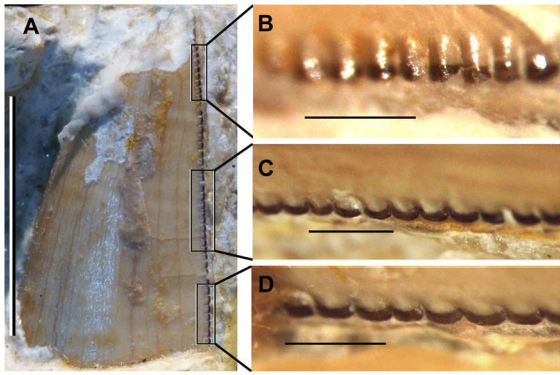
**Cranial bones**

The skull-roof is flat and rectangular, being wider than long. The **supratemporal fossa** is much larger than the supratemporal fenestra (Figures 2A, B). This fossa is about three times smaller than the orbits. The distance between the supratemporal fossae is half that of the frontal inter-orbital width. The dorsal border of this fossa is surrounded by rugosities, forming an elevation that is more developed in the medial and lateral borders. This condition is similar to *Sebecus* and the peirosaurid *Hamadasuchus*, differing from any other mesoeucrocodyliforms (*sensu*

Benton & Clark 1988 [20]) known to date. The **palpebral** bones, which are present as anterior and posterior elements in other sebecids (e.g. *Sebecus*, Lumbrera form [4,26]) and specially in “peirosaurids” (e.g. *Lomasuchus*, *Uberabasuchus*, *Montealtosuchus*) [27–29], are not preserved. Even so, the orbit is placed rather laterally, a typical terrestrial sebecid feature, and not laterodorsally as in semi-aquatic crocodyliform morphotypes (e.g., *Stolokrosuchus*, *Lorosuchus* [4,24], and extant species). The **frontal** is broad and triangular, with a low and smooth longitudinal crest running from the middle part to the posterior portion this bone. A longitudinal frontal crest is a common characteristic for many basal mesoeucrocodylian species, which includes some sebecosuchian taxa (e.g. *Sebecus*; *Zulmasuchus*; *Iberosuchus macronotus*; *Pepesuchus*, *Lorosuchus* [4,16,23,30]). The frontal ornamentation is similar to that on the maxilla, with the wrinkles starting at the frontal longitudinal crest directed to the lateral margins. The **jugal** is very large and ornamented like most other cranial bones. The posterior ramus is laterally expanded and higher than the anterior one, an unusual feature within sebecosuchians only previously observed in *Bretesuchus* [8]. The ventrolateral margin is concave, a unique feature among basal mesoeucrocodylians. The **quadratojugal** takes part in the cranio-mandibular articulation forming the “double articulation” (*sensu* Buffetaut 1975 [31]), a feature absent in extant eusuchians but observed in all sebecid species and some other not closely related taxa (e.g. *Trematochampsia*, *Libysocuchus*, *Dyrosauridae*). The **squamosal** shows a developed sculptured dorsal posteriorly pointed lobe (the squamosal posterior process or the squamosal prong [32] that is directed posteriorly and does not



**Figure 5.** *Sahitisuchus fluminensis* gen. et sp. nov. (MCT 1730-R), in occipital view. A, photo; B, illustration. For abbreviations see Figure 1. Scale bar: 100 mm. doi:10.1371/journal.pone.0081386.g005



**Figure 6. Fourth mandibular tooth from the left side of *Sahitisuchus fluminensis* gen. et sp. nov. (MCT 1730-R), showing the serrations.** A, labial surface; B, detail for apex carina; C, detail for middle carina; D, detail for basal carina. Scale bar in A: 10 mm; B, C and D: 1 mm.

doi:10.1371/journal.pone.0081386.g006

form a horn, similar to *Hamadasuchus* and *Lomasuchus* [27,32]. *Sebecus* also shows such a developed process, but differs from *Sahitisuchus* by a more squared-shape posterior end [23]. The **quadrates** are massive and mostly unsculptured. The portion of the tympanic cavity formed by the quadrate is not multifenestrated like the one found in protosuchians, notosuchians [33] and baurusuchids (e.g. [34]). It also lacks the oblong concavity, which is characteristic of the Baurusuchidae [34–36] but, like *Sebecus*, *Hamadasuchus* and recent species, shows only two openings: the small, anterior preotic siphonial foramen, followed by the larger, oval otic incisure. The ventral portion of the tympanic membrane was supported by a low and sharp semicircular crest. The quadrate distal body extends beyond the occipital limits and bears

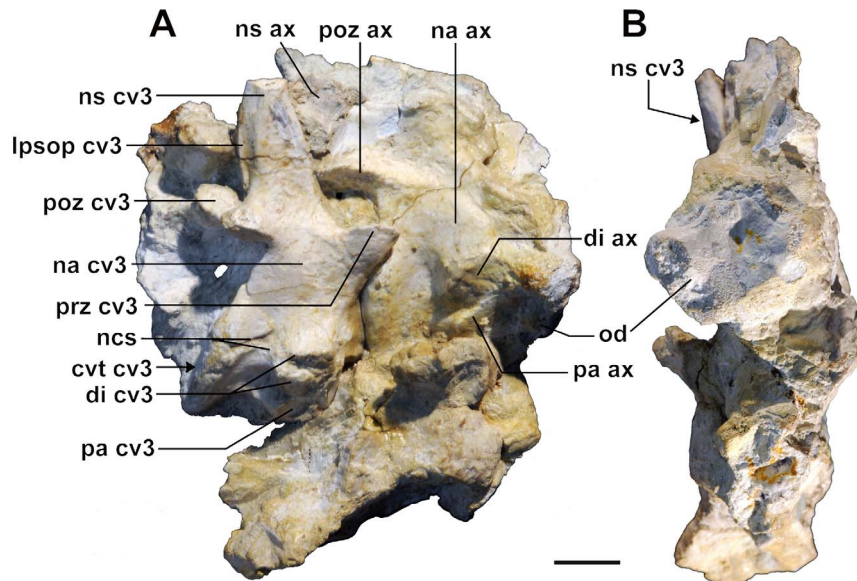
a well-developed sharp crest that runs from the lateral region of the cranioquadrate passage to the end of this bone. A semi-elliptical shallow concavity in the most distal portion of the quadrate body, just medial to the quadratojugal-quadrate suture and anterior to the cranial-mandibular articulation is very conspicuous in the new species (Figures 2, 5). In ventral view the quadrate exhibits pronounced crests A and A' [37] for *M. adductor mandibulae posterior* [38].

### Palatal region

The anterior process of the **palatine** projects over the maxillary palatal shelf with a “U-shaped” anterior margin [39], which extends well forward from the anterior margin of the suborbital fenestrae (Figure 3). The **pterygoids** are broad wing-shaped elements, similar to those found in *Sebecus* (MMP 235), being distinct from the broad quadrangular pterygoid of *Zulmasuchus*, peirosaurids (e.g. *Montealtosuchus*, *Hamadasuchus*) and derived eusuchians. The lateral border of the pterygoid flanges are arched and curved inwards similar to *Zulmasuchus* [9,16]. In *Bretesuchus* this curvature is even more accentuated than in the latter species [8]. The pterygoid plate is slightly concave, very large and broad. The **basicranium** is not verticalized as found in Eusuchia but more verticalized than some basal crocodyliforms forms (e.g. baurusuchids and sphagesaurids) (Figures 3, 5). The **choanae** are positioned between the palatine and pterygoid, having a low and laminar choanal septum. The choanal groove (or fossa) is circular as the one of *Sebecus* and *Barinasuchus* but comparatively smaller than in these taxa.

### Occipital region

The occiput is about four times wider than high, which is partially attributed to crushing of the specimen (Figure 5). On the skull roof, the **supraoccipital**, this bone is as a relatively small forward pointed triangle which is inserted between the parietals. In



**Figure 7. *Sahitisuchus fluminensis* gen. et sp. nov. (MCT 1730-R) cervical vertebrae.** A, right lateral view of axis and third cervical vertebra; B, anterior view, showing the odontoid process. **cvt cv3**, centrum of third cervical vertebra; **di ax**, axis diapophysis; **di cv3**, diapophysis of third cervical vertebra; **Ipsop cv3**, postspinal lamina of third cervical vertebra; **na ax**, axis neural arch; **na cv3**, neural arch of third cervical vertebra; **ncs**, neuro-central suture; **ns ax**, axis neural spine; **ns cv3**, neural spine of third cervical vertebra; **od**, odontoid process; **pa ax**, axis parapophysis; **pa cv3**, parapophysis of third cervical vertebra; **poz ax**, axis postzygapophysis; **poz cv3**, postzygapophysis of third cervical vertebra; **prz cv3**, prezygapophysis of third cervical vertebra. Scale bar: 10 mm.

doi:10.1371/journal.pone.0081386.g007

**Table 1.** Measurements in mm of *Sahitisuchus fluminensis* gen. et sp. nov. (MCT 1730-R), adapted from [25] ~, estimated measurement.

1. greatest width	179
2. width of rostrum, posterior	97
3. interorbital distance	60
4. orbit length	52.2
5. skull table width, anterior	67
6. skull table length	96
7. skull table width, posterior	~143.8
8. occipital condyle width	23
9. occipital condyle height	15
10. orbit width	26.6
11. choana width	39
12. choana length	35.5
13. skull roof length	67
14. quadrate condyle width	37.7
15. supratemporal fossa width	28.4
16. supratemporal fossa length	34.4
17. palatal fenestra length	~48.6
18. pterygoid flanges width	~125.5
19. rostrum width at secondary dental peak	~50.3
20. rostrum width at notch (or fossa) for 4 <sup>th</sup> mandibular tooth	~35.4
21. palatine bar width	38
22. mandible length	~369
23. symphysis length	~84.2
24. retroarticular process length	44
25. distance between supratemporal fossa/fenestra	17
26. distance between medial borders of supratemporal fossae	15.3
27. supratemporal fenestra width	13.8
28. supratemporal fenestra length	22
29. distance between supratemporal fossa and lateral margin of skull roof (at po–sq suture level)	21
30. distance between supratemporal fossa and posterior margin of skull roof	22
31. quadrate distal body length	31.5
32. laterotemporal fenestra length	~38.6
33. occiput height (dorsal skull roof surface to occipital condyle)	38
34. occiput height (dorsal skull roof surface to medial exoccipital ventral margin)	54.7

doi:10.1371/journal.pone.0081386.t001

occipital view this bone is relatively large and exhibits a prominent nuchal crest. The latter comprises the insertion point for *M. spinalis capitis* [40]. The posttemporal fenestrae are not well preserved due to compression, but the preserved part is very reduced with no postoccipital process. The supraoccipital descending portion is acute and reaches the foramen magnum. However, this seems more the product of the compression than to an autapomorphic feature of the new species. The **exoccipital** has a very distinct mediodorsal process similar to *Ayllusuchus*. This process is sharp and has a semilunate shape, comprising the insertion point for the *M. rectus capitis sublimus* and *M. spinalis capitis*. The **basioccipital** is trapezoidal and positioned oblique ( $\sim 45^\circ$ ) relative to the horizontal plane. This bone possesses a median elevated crest (insertion point for the *M. rectus capitis anterior*). The **basisphenoid** is short and completely verticalized, being little exposed both in occipital and palatal views. Similar inclination of basisphenoid and

basioccipital is also found in some sebecids (e.g. *Zulmasuchus* and *Bretesuchus*) and peirosaurids.

### Mandible

In ventral view the mandible shows an inverted “Y-shape” (Figures 3, 4). The robust mandibular symphysis is formed by the dentaries and splenials and reaches to opposite the fourth maxillary teeth while the dentary teeth are not visible, occupying about 21% of the mandibular length. In lateral view the anterior mandible portion is not as high as those of *Bretesuchus* and baurusuchids. The **splenial** forms about one-fourth of the mandibular symphysis and medially covers the Meckelian channel as a vertical and thick bone lamina. The **mandibular lateral fenestrae** is closed, an unusual feature in crocodyliforms and differing from all other sebecosuchian taxa. The **angular** exhibits a robust well-developed ventrolateral ridge that runs over almost



**Table 2.** *Sahitisuchus fluminensis* gen. et sp. nov. (MCT 1730-R) teeth measurements in mm.

Right tooth row			Left tooth row		
tooth	fabl	tch	tooth	fabl	tch
m1	4.8	14.8	m1	10.9	6
m2	5.2	9.2	m2	14	7.5
m3	31.5	11.7	m3	28.7	15.8
m4	~11.7	~5.8	m4	10	6.4
lmt	6.4	6.1	m5	8.2	5.7
1 <sup>st</sup> d (d4 ?)	~26.2	~15.6	6 <sup>th</sup> m	–	9.3
2 <sup>nd</sup> d	14.8	7.7	7 <sup>th</sup> m	6.14	6
3 <sup>th</sup> d	8.6	5	8 <sup>th</sup> m	6.5	7.2
4 <sup>th</sup> d	–	6.6	9 <sup>th</sup> m	–	5.7
			10 <sup>th</sup> m	6.4	6.1
			1 <sup>st</sup> d (d4 ?) s	~12.8	7.1

**1std (d4 ?)**, first exposed dentary tooth of the right side; **1std (d4 ?) s**, first exposed replacement dentary tooth of the left side; **d**, dentary tooth; **fabl**, fore-after basal length; **lmt**, last exposed maxillary tooth; **m**, maxillary tooth; **tch**- tooth crown height; –, lack information; ~, estimated measurement.  
doi:10.1371/journal.pone.0081386.t002

the entire angular length, probably corresponding to the insertion area for the strongest component of the mandibular adductory musculature (*M. adductor mandibulae internus pterygoideus ventralis* [38]). The **surangular** takes part in the glenoid fossa, is stout and slightly ornamented. In lateral view, the suture with the dentary is gently convex. The dorsal margin of this bone is arched. A developed ridge with a smooth dorsal and rugose ventral surface is present below the glenoid fossa (Figure 3A, B). Except for *Bretesuchus*, in all other sebecosuchids where this region is preserved this crest is only incipient or poorly developed. With the retroarticular process, this structure is regarded as the probable insertion point for the components of the *M. depressor mandibulae* component [38,41]. The **articular** forms about 60% of the glenoid fossa, like in other sebecids but unlike some other sebecosuchians, as in baurusuchids. The retroarticular process shows an elevated lateromedially crest just posterior to the glenoid fossa, a structure that does not allow palinal-propalinal jaw movements. The **retroarticular process**, formed by the articular and the surangular, is arched with a concave dorsal margin. The most medial posterior part, formed by the articular, is “tongue shaped”. Seen from posterior view, the posterior margin is inclined ventromedially forming an angle of about 40° relative the horizontal plane. A blunt crest runs longitudinally in the articular portion of this process. The retroarticular foramen aëreum is small and opens close to the medial margin of the retroarticular process, right after the glenoid fossa.

## Dentition

The premaxillary teeth are not preserved but at least twelve maxillary teeth must have been present (Figures 4, 6). Due to the fact that the upper and lower jaws are occluded, most of the mandibular teeth are not visible.

The new species has the crocodyliform plesiomorphic pattern of occlusion [3], with the hypertrophied dentary caniniform exposed laterally, occluding in the premaxillary-maxillary fossa, and the following maxillary teeth occluding buccally relative to the mandibular tooth row. The upper dentition is heterodont with three morphological arrangements, all showing serrated carinae

formed by true denticles (*sensu* Langston 1975 [42]) (Figure 6). The first three maxillary teeth are ziphodont, curved posteriorly with pointed and buccolingually compressed crowns. The second dental morphotype is formed by the following two (perhaps three) teeth that are lanceolate and bear straight (i.e., not posteriorly curved) crowns. They are followed by progressively shorter teeth with blunt apices and a marked constriction between root and crown. The large caniniform tooth shows about 3–3.5 denticles per mm (Figure 6).

## Cervical elements

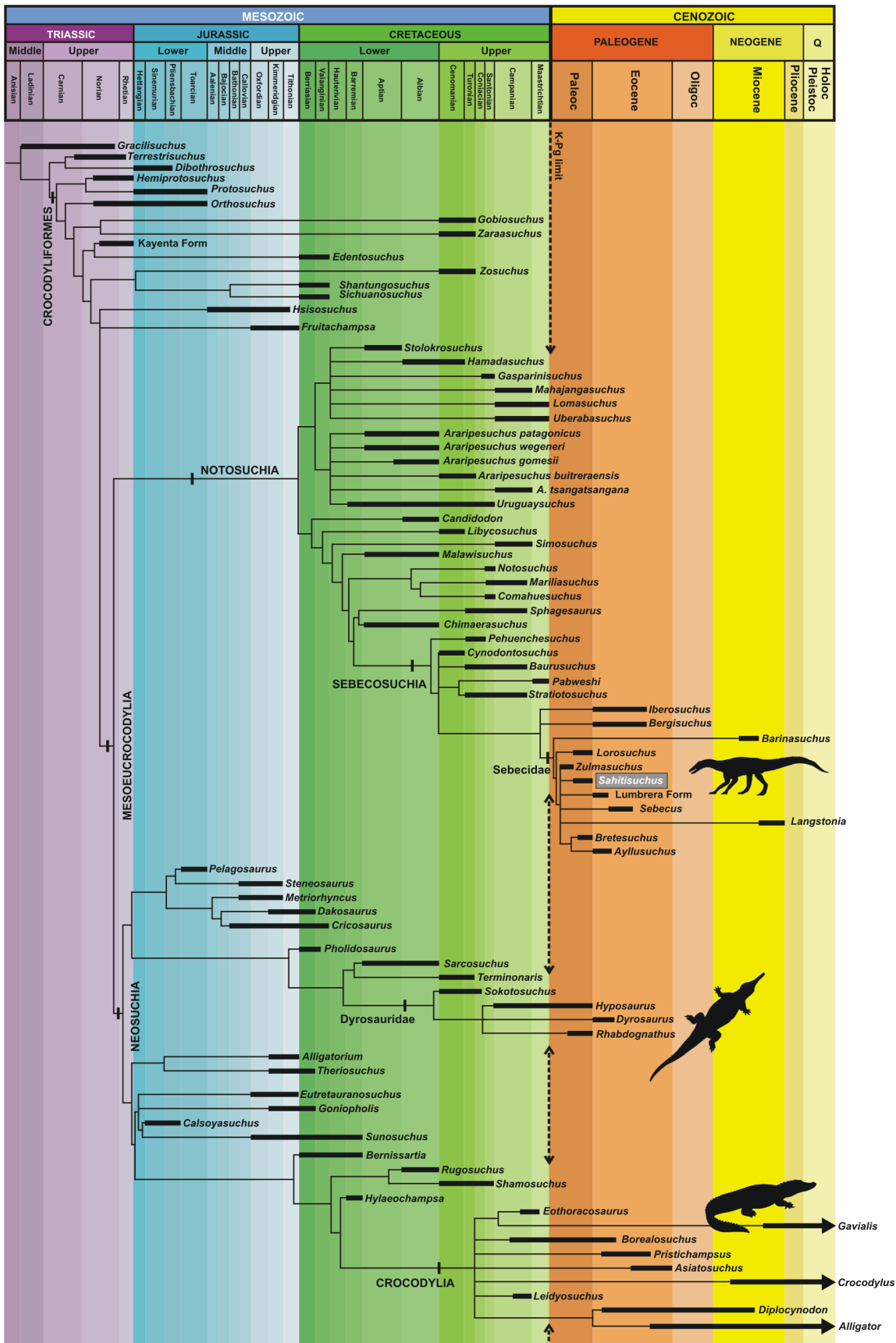
Several of the most anterior cervical elements such as the pro-atlas, intercentrum and odontoid process are described for first time in Sebecidae (Figures 3, 7). The **pro-atlas** was displaced over the left pterygoid flange. It is a small and laminar V-shaped bone with a low dorsal crest. Compared to modern crocodylians, this bone is rather conservative differing mainly by being narrower (Figure 3). The **intercentrum**, the only part identifiable of the **atlas**, was also displaced, being preserved over the left suborbital fenestra. This bone is robust, not laminar, with two blunt posteriorly directed processes for the first cervical ribs. The **axis** is preserved associated with a well-developed **odontoid process** that is similar to the one found in recent taxa by being massive and showing on each side blunt anterior tuberos processes (Figure 7). In the new species the anterior region is vertical and lacks the small medial processes found in at least some recent taxa. Furthermore, the odontoid process is fused with the axis with no visible suture indicating that this is most likely a very old individual [43]. The axis is well developed with a low, blade-like neural spine. The **third cervical vertebra** is amphicoelous, with a tall spike-like neural spine, inclined posteriorly, with a postspinal lamina that is bifurcated at the base (Figure 7). As in *Sebecus* (the only other sebecid where this part of the skeleton was described [17]), the diapophysis is divided by the neurocentral suture and in lateral view, the centrum shows a medial constriction and a trapezoidal shape, with anterior and posterior articulations inclined anteriorly. Among the differences with *Sebecus*, *Sahitisuchus* has more robust and broader diapophyses, and the length of the third cervical centrum is subequal compared to the axis.

## Discussion and Conclusions

In order to investigate the phylogenetic position of *Sahitisuchus fluminensis*, we used the data matrix published by Pol et al. 2012 [17], who have considered all well-known sebecid taxa (see Data S1). The analysis was run through TNT, with characters either unordered or ordered and both results show that *Sahitisuchus* is a member of the Sebecidae (Figure 8). Furthermore, the addition of the new Brazilian taxon collapses the monophyletic genus *Sebecus* recovered in previous studies [17] and suggests that *Barinasuchus* occupies a basal position within the Sebecidae relative to *Lorosuchus*.

The overall crocodyliform record in number of specimens and taxa from Paleocene deposits is rather slim. This low diversity contrasts with the expressive crocodyliform record of the Cretaceous, where a great number of species thrived in a variety of ecological niches, particularly in the Gondwana, such as notosuchians (e.g. Uruguaysuchidae, Sphagesauridae), baurusuchids (e.g. *Baurusuchus*, *Stratiotosuchus*, *Pabweshi*), peirosaurids (e.g. *Uberabasuchus*, *Pepesuchus*, *Hamadasuchus*), mahajangasuchids (e.g. *Mahajangasuchus* and *Kaprosuchus*), and other taxa whose phylogenetic position is more controversial [e.g. 44].

Only three crocodyliform lineages are represented either before and after the K-Pg boundary: the marine Dyrosauridae,





**Figure 8. Biochronology of the Crocodylomorpha based on the strict consensus tree obtained by the phylogenetic analysis (see text for details) and recorded temporal range.**  
doi:10.1371/journal.pone.0081386.g008

particularly abundant in coastal deposits of Africa [45,46], the semiaquatic Crocodylia, recovered specially by alligatoroids from North and South America [15,47–50]; and the terrestrial sebecosuchians (e.g. [17]). Dyrosaurids are very specialized and became quite diversified after the K-Pg boundary, becoming along with sharks the main marine predators after the demise of mosasaurs [6]. Although the Alligatoroidea were already present in the Late Cretaceous this group only diversified after the K-Pg biotic crises (e.g. [39,49]), contrary to what happened with the sebecosuchians that became less diverse (with baurusuchids restricted to Upper Cretaceous [e.g. 34]).

So far, the only Paleocene deposit where members of the Alligatoroidea (*Eocaiman itaboraiensis* [15]) and Sebecosuchia (represented by *Sahitisuchus*) were recovered is the São José de Itaboraí Basin. Having its origin related to the separation of South America and Africa, resulting in the opening of the South Atlantic Ocean [51], this tectonic feature consists of a small half-graben with a NE-SW major axis of 1.400 m and a sedimentary sequence that reaches a maximum thickness of 125 m [52]. The main fossils described so far are mammals that record one of the earliest phases of the mammalian radiation in South America after the K-Pg biotic crisis (e.g. [53]). The inferred age of the Itaboraí Basin based on the mammalian fauna has been the matter of a recent debate [21,53–55]. Despite this uncertainty, the new crocodyliform is part of the so-called S2 paleofauna, whose age (Itaboraian SALMA [55]) is considered middle Upper Paleocene varying in absolute terms between 61.8 million to 58.5 million years [12] or 58.5 million to 56.5 million years [22].

The co-occurrence of a remnant of the pre-K-Pg sebecosuchian and a post-K-Pg alligatoroid crocodyliform taxon, here represented by *Sahitisuchus* and *Eocaiman* [15], respectively, in the Paleocene deposits of the Itaboraí Basin is quite unusual and somewhat surprising. The taphonomic history of those specimens, as of other fossils found in this basin, has been difficult to retrieve, particularly due to the fact that all material was recovered from fissures and not detailed information about their collecting has been recorded. This raises the valid question if all fossils were synchronous [e.g., 56–57]. In the lack of other information, some authors have used the color of the specimens to establish if they came from the same or distinct fissures that stands as a proxy for being regarded synchronous [56].

Regarding the crocodyliforms, it is clear that the sebecid and the alligatorid species came from distinct environments (terrestrial and semi-aquatic, respectively) and represent animals that lived around a freshwater lake before becoming preserved. Among the specimens attributed to *Eocaiman*, several show distinct colors suggesting that they come from distinct fissures [15]. The material of *Sahitisuchus fluminensis* is preserved in a greyish colored limestone, similar to some of the *Eocaiman* material. Furthermore, despite the questions about the correct absolute age, it has been proposed that the calcareous deposits of the São José de Itaboraí Basin were formed in a time span of 2 million years [57–58] or less. Therefore, we can conclude that *Sahitisuchus* and *Eocaiman* were either set apart for a comparatively short geological timespan or most likely co-occurred, the last hypothesis favored here.

One possible scenario that could explain the co-occurrence of *Sahitisuchus* and *Eocaiman* is that, right after the Cretaceous-Paleogene biotic crisis, only the less specialized crocodyliforms survived (e.g. [59]), except for the marine dyrosaurids that appear not to have been negatively affected by this event (e.g. [6]).

Regarding sebecosuchians, this appears to be correct since the Cretaceous forms show high skulls and a marked specialization in the dentition that is quite reduced. The Cretaceous taxa *Baurusuchus* and *Stratiotosuchus*, for example, show only five maxillary teeth opposed to the 10 in the Paleogene *Lorosuchus*, *Bretesuchus* and *Zulmasuchus*, and 12 in *Sahitisuchus*. Furthermore, Paleocene sebecosuchians represented only by the Sebecidae show the posterior teeth blunt and not specialized as in the Cretaceous sebecosuchians. It is conceivable that the Paleocene sebecosuchians adopted a mixture of semi-aquatic and terrestrial lifestyles and therefore might have at least partially shared the same environments as Paleocene alligatoroids. After the Eocene, sebecosuchians became again more specialized, developing a higher and laterally compressed rostrum as observed in the Eocene *Sebecus* and the Upper Miocene *Langstonia*. They further show a trend to reduce dentition (e.g. *Sebecus* exhibiting nine maxillary teeth), although not approaching the reduction observed in the Cretaceous baurusuchid sebecosuchians.

The unexpected result in the phylogenetic study presented here with the addition of *Sahitisuchus* to the data matrix published by Pol et al. [17], is the basal position of the high-snouted *Barinasuchus*. Recovered from Miocene deposits, this very large sebecid is known from the anterior portion of the rostrum only [9]. If its phylogenetic position is correct, this species indicates the presence of a yet another independent sebecid lineage that sometime after the K-Pg biotic crisis developed accentuated oreinirostry (sensu [60]) independently from other sebecids, suggesting a more complex history of the post-K-Pg crocodyliform radiation.

## Supporting Information

**Figure S1 Topology resulted by heuristic analysis of unordered characters states.** Bootstrap values above the lines (branches), at left and no-italic; Jackknife values above lines (branches), at right and italic; Bremer decay below the lines (branches). Data matrix from Pol et al., (2012) [17] with *Sahitisuchus fluminensis* added.  
(JPG)

**Figure S2 Topology resulted by heuristic analysis of third seven ordered characters states.** Bootstrap values above the lines (branches), at left and no-italic; Jackknife values above lines (branches), at right and italic; Bremer decay below the lines (branches). Data matrix from Pol et al., (2012) [17] with *Sahitisuchus fluminensis* added.  
(JPG)

**Data S1 Phylogenetic Analyses.**  
(DOC)

## Acknowledgments

We thank Jéssica Pontes da Silva (MN/UFRJ) for preparing the specimen, Orlando N. Grillo (MN/UFRJ) for helping with the pictures, Carla W. Gabriel (Microscopy Laboratory technician DEGEO/CCMN/UFRJ) for the microscopic images, and Lílian P. Bergqvist (DEGEO/CCMN/UFRJ) for information about the São José de Itaboraí Basin. We also would like to thank Chris Brochu (University of Iowa, EUA), James Clark (Washington University, EUA) and an unknown reviewer for comments and suggestions on that improved this contribution.

## Author Contributions

Conceived and designed the experiments: AWAK AEPP DAC. Performed the experiments: AWAK AEPP DAC. Analyzed the data: AWAK AEPP

DAC. Contributed reagents/materials/analysis tools: AWAK AEPP DAC. Wrote the paper: AWAK AEPP DAC.

## References

- Hekkala E, Shirley MH, Amato G, Austin JD, Charter S, et al. (2011). An ancient icon reveals new mysteries: mummy DNA resurrects a cryptic species within the Nile crocodile. *Molecular Ecology* 20: 4199–3215. (doi:10.1111/j.1365-294X.2011.05245.x).
- Brochu CA (2001). Crocodylian snouts in space and time: phylogenetic approaches toward adaptive radiation. *American Zoologist* 41: 564–585.
- Brochu CA (2003). Phylogenetic approaches toward crocodylian history. *Annual Review of Earth and Planetary Sciences* 31: 357–397.
- Pol D, Powell JE (2011). A new sebecid mesoeucrocodylian from the Rio Loro Formation (Paleocene) of north-western Argentina. *Zoological Journal of the Linnean Society* 163: 7–36.
- Gasparini Z (1996). Biogeographic Evolution of the American Crocodylians. *Münchner Geowissenschaftliche Abhandlungen, Reihe A, Geologie und Paläontologie* 30: 159–184.
- Barbosa JA, Kellner AWA, Viana MSS (2008). New dyrosaurid crocodylomorph and evidences for faunal turnover at the K-P transition in Brazil. *Proceedings of The Royal Society B*, 275: 1385–1391.
- Simpson GG (1937). New reptiles from the Eocene of South America. *American Museum Novitates* 927: 1–3.
- Gasparini Z, Fernandez M, Powell J (1993). New Tertiary Sebecosuchians (Crocodylomorpha) from South America: Phylogenetic Implications. *Historical Biology* 7: 1–19.
- Paolillo A, Linares O (2007). Nuevos cocodrilos sebecosuchia del cenozoico suramericano (Mesosuchia: Crocodylia). *Paleobiologia Neotropical* 3: 1–25.
- Klein VC, Bergqvist LP (2002). Excursão à Bacia de São José de Itaboraí, Rio de Janeiro. *Arquivos do Museu Nacional* 60: 245–256.
- Paula-Couto C (1953). A Bacia Calcárea de Itaboraí e a tectônica da costa Sudeste do Brasil. *Notas Preliminares e Estudos da Divisão de Geologia e Mineralogia do DNP, Rio de Janeiro* 75: 1–17.
- Bergqvist LP, Moreira AL, Pinto DR (2005). Bacia de São José de Itaboraí, 75 Anos de História e Ciência. *Companhia de Pesquisa de Recursos Minerais/Serviço Geológico do Brasil (CPRM/SGB)*. pp. 1–84.
- Price LI, Paula-Couto C (1946). Vertebrados Terrestres do Eoceno na Bacia Calcárea de Itaboraí, Brasil. *Bulletin, II Congresso Pan-Americano de Engenharia de Minas e Geologia, Rio de Janeiro* 3: 149–173.
- Kellner AWA, Campos DA (1999). Vertebrate paleontology in Brasil—a review. *Episodes* 22: 238–251.
- Pinheiro AEP, Fortier DC, Pol D, Campos DA, Bergqvist LP (2012). A new *Eocaiman* (Alligatoridae, Crocodylia) from Itaboraí Basin, Paleocene of Rio de Janeiro, Brazil. *Historical Biology*: 1–12. (doi: 10.1080/08912963.2012.705838).
- Buffetaut E, Marshall LG (1991). A new crocodylian, *Sebecus quejiazuc* nov.sp. (Mesosuchia, Sebecidae) from the Santa Lucía Formation (early Paleocene) at Vila Vila, South-Central Bolivia. In: Suarez-Soruco R ed. *Fósiles y Facies de Bolivia - Vol I Vertebrados*. *Revista Técnica de YPF* 12: 545–557.
- Pol D, Leardi JM, Lecuona A, Krause M (2012). Postcranial anatomy of *Sebecus icaeorhinus* (Crocodyliformes, Sebecidae) from the Eocene of Patagonia. *Journal of Vertebrate Paleontology* 32: 328–354.
- Goloboff PA, Farris JS, Nixon KC (2008). TNT: Tree analysis using New Technologies. Program and documentation available from the authors and <http://www.zmuc.dk/public/phylogeny>.
- Whetstone KN, Whybrow P (1983). A Cursorial Crocodylian from the Triassic of Lesotho (Basutland, South Africa). *Occasional Papers of the Museum of Natural History, University Kansas* 106: 1–37.
- Benton M, Clark JM (1988). Archosaur phylogeny and the relationships of the Crocodylia. In: Benton M, ed. *The phylogeny and classification of the tetrapods*. Oxford: Clarendon Press. pp 295–338.
- Medeiros RA, Bergqvist LP (1999). Paleocene of the São José de Itaboraí Basin, Rio de Janeiro, Brazil: lithostratigraphy and biostratigraphy. *Acta Geológica Leopoldensia* 22: 3–22.
- Marshall LG (1985). Geochronology and Land-Mammal biochronology of the transamerican faunal interchange. In: Steli FG, Webb SD eds. *The Great American biotic interchange*. New York Plenum Press. pp. 49–85.
- Colbert EW (1946). *Sebecus*, Representative of a Peculiar Suborder of Fossil crocodylia from Patagonia. *Bulletin of The American Museum of Natural History* 87: 217–270.
- Larsson HCE, Gado B (2000). A new Early Cretaceous crocodyliform from Niger. *N Jb Geol Paläont Abh* 217: 131–141.
- Langston W, Gasparini Z (1997). Crocodylians, *Gryposuchus*, and the South American Gavials. In: Kay RF, Madden RH, Cifelli RL, Flynn J eds. *Vertebrate Paleontology in the Neotropics, The Miocene Fauna of the Venta, Colombia*. Smithsonian Institution Press, Washington and London. 592 p.
- Powell JE, Babor MJ, López DAG, Deraco MV, Herrera C (2011). Eocene vertebrates of northwestern Argentina: annotated list. *Cenozoic Geology of the Central Andes of Argentina*: 49–370.
- Gasparini Z, Chiappe LM, Fernandez M (1991). A new Senonian peirosaurid (Crocodylomorpha) from Argentina and synopsis of the South American Cretaceous crocodylians. *Journal of Vertebrate Paleontology* 11: 316–333.
- Carvalho IS, Ribeiro LCB, Avilla L (2004). *Uberabasuchus terrificus* sp. nov., a new Crocodylomorpha from the Bauru Basin (Upper Cretaceous), Brazil. *Gondwana Research* 7: 975–1002.
- Carvalho IS, Vasconcelos FM, Tavares SAS (2007). *Montealtosuchus arrudacamposi*, a new peirosaurid crocodile (Mesoeucrocodylia) from the Late Cretaceous Adamantina Formation Brazil. *Zootaxa* 1607: 35–46.
- Campos DA, Oliveira GR, Figueiredo RG, Riff D, Azevedo AK, et al. (2011). On a new peirosaurid crocodyliform from the Upper Cretaceous, Bauru Group, southeastern Brazil. *Anais da Academia Brasileira de Ciências* 83: 317–327.
- Buffetaut E (1975). Sur l'articulation entre le quadratojugal et le surangulaire de certains Crocodyliens fossiles. *Comptes Rendus Acad Sc Paris, D* 280: 2741–2743.
- Larsson HCE, Sues H-D (2007). Cranial Osteology and Phylogenetic Relationships of *Hamadasuchus rebouli* (Crocodyliformes: Mesoeucrocodylia) From The Cretaceous of Morocco. *Zoological Journal of the Linnean Society* 149: 533–567.
- Hecht MK, Tarsitano SF (1983). On the cranial morphology of Protosuchia, Notosuchia and Eusuchia. *Konstruktionsmorphologie* 152: 657–668.
- Montefeltro FC, Larsson HCE, Langer MC (2011). A New Baurusuchid (Crocodyliformes, Mesoeucrocodylia) from the Late Cretaceous of Brazil and the Phylogeny of Baurusuchidae. *Plos One* 6. (e21916. doi:10.1371/journal.pone.0021916)
- Riff D, Kellner AWA (2011). Baurusuchid crocodyliforms as theropod mimics: clues from the skull and appendicular morphology of *Stratiotosuchus maxhechti* (Upper Cretaceous of Brazil). *Zoological Journal of the Linnean Society*, 163: 37–56.
- Pinheiro AEP, Bertini RJ, Andrade MB, Martins Neto RG (2008). A new specimen of *Stratiotosuchus maxhechti* (Baurusuchidae, Crocodyliformes) from the Adamantina Formation (Upper Cretaceous), Southeastern Brazil. *Revista Brasileira de Paleontologia* 11: 37–50.
- Iordansky NN (1973). The skull of the Crocodylia. In: Gans C ed. *Biology of the Reptilia*, Academic Press, London and New York 4. pp. 201–262.
- Bona P, Desojo JB (2011). Osteology and Cranial Musculature of *Caiman latirostris* (Crocodylia: Alligatoridae). *Journal of Morphology*: 1–16. (doi: 10.1002/jmor.10894).
- Brochu CA (1999). Phylogenetics, Taxonomy, and Historical Biogeography of Alligatoroidea. *Journal of Vertebrate Paleontology* 19: 9–100.
- Chiasson RB (1962). *Laboratory Anatomy of the Alligator*. University of Arizona, W.M.C. Brown Company Publishers. pp. 1–36.
- Iordansky NN (2000). Jaw Muscles Of The Crocodiles: Structure, Synonymy, and some implications on Homology and Functions. *Russian Journal of Herpetology* 7: 41–50.
- Langston W (1975). Ziphodont crocodyles: *Pristichampsus vorax* (Troxell), a new combination, from the Eocene of North America. *Fieldiana - Geologie, Chicago* 33: 291–314.
- Brochu CA (1996). Closure of Neurocentral sutures during crocodylian ontogeny: implications for maturity assessment in fossil Archosaurs. *Journal of Vertebrate Paleontology* 16(1):49–62.
- Kellner AWA (1987). Ocorrência de um novo crocodyliano no Cretáceo Inferior da Bacia do Araripe, Nordeste do Brasil. *Anais da Academia Brasileira de Ciências*, 59(3): 219–232.
- Jouve S, Bouya B, Amaghaz MB (2005). A short-snouted dyrosaurid (Crocodyliformes, Mesoeucrocodylia) from the Paleocene of Morocco. *Palaeontology* 48: 359–369.
- Jouve S, Bouya B, Amaghaz MB (2008). A long-snouted dyrosaurid (Crocodyliformes, Mesoeucrocodylia) from the Paleocene of Morocco: Phylogenetic and Palaeobiogeographic implications. *Palaeontology* 51: 281–294.
- Bartels WS (1984). Osteology and systematic affinities of the horned alligator *Ceratosuchus* (Reptilia, Crocodylia). *Journal of Paleontology* 58: 1347–1353.
- Brochu CA (2004). Alligatorine phylogeny and the status of *Allognathosuchus* Mook, 1921. *Journal of Vertebrate Paleontology* 24: 857–873.
- Brochu CA (2011). Phylogenetic relationships of *Necrosuchus ionensis* Simpson, 1937 and the early history of caimanines. *Zoological Journal of the Linnean Society* 163: 228–256.
- Bona P (2007). Una nueva especie de *Eocaiman* Simpson (Crocodylia, Alligatoridae) del Paleoceno Inferior de Patagonia. *Ameghiniana* 44: 435–445.
- Riccomini C, Sant'Anna LG, Ferrari AL (2004). Evolução geológica do Rifit Continental do Sudeste do Brasil. In: Mantesso-Neto V, Bertorelli A, Carneiro CDR, Brito Neves BB eds. *Geologia do Continente Sul-Americano: evolução da obra de Fernando Flávio Marques de Almeida*. Beca, São Paulo. pp. 393–405.
- Rodríguez-Francisco BH, González BB, Peroba CEN, Guedes SC (1985). Estudo dos testemunhos de sondagem na Bacia de São José, Itaboraí, R. J. I. Furo SJ-2T. *Palaeontological Actas, VIII Congresso Brasileiro de Paleontologia*,

- DNPM Série Geologia, 27; Secção Paleontologia e Estratigrafia 2, Rio de Janeiro, Brazil: 651–652.
53. Muizon C, Brito IM (1993). Le Basin calcacarie de São José de Itaboraí (Rio de Janeiro, Brésil) ses relations fauniques avec le site de Tiupampa (Cochabamba, Bolivie). *Annales Paléontologie* 79: 233–269.
  54. Gelfo JN, Goin FJ, Woodburne MO, Muizon C (2009). Biochronological relationships of the earliest south american paleocene mammals faunas. *Palaeontology* 52: 251–269.
  55. Paula-Couto C (1952). Fossil mammals from the beginning of the Cenozoic in Brasil. Marsupialia: Polydolopidae and Borhyaenidae. *American Museum Novitates* 1559: 1–27.
  56. Bergqvist LP, Almeida EB, Araújo-Júnior HI (2011). Tafonomia da assembléia fossilífera de mamíferos da “Fenda 1968”, Bacia de São José de Itaboraí, Estado do Rio de Janeiro, Brasil. *Revista Brasileira de Paleontologia* 14(1):75–86.
  57. Rage J-C (1998). Fossil snakes from the Paleocene of São José de Itaboraí, Brasil. Part I. Madtsoiidae, Aniliidae. *Paleovertebrata* 27: 109–104.
  58. Marshall LG, Sempere T, Butler RF (1997). Chronostratigraphy of the mammal-bearing Paleocene of South America. *Journal of South America Earth Sciences* 10(1): 49–70.
  59. Buffetaut E (1990). Vertebrate extinctions and survival across the Cretaceous–Tertiary boundary. *Tectonophysics* 171: 337–345.
  60. Busbey AB III (1995). The structural consequences of skull flattening in crocodylians. In: Thomason J, ed. *Functional morphology in vertebrate paleontology*. London: Cambridge University Press. pp 171–192.