



CrossMark
click for updates

Research

Cite this article: Sibly RM, Grady JM, Venditti C, Brown JH. 2014 How body mass and life-style affect juvenile biomass production in placental mammals. *Proc. R. Soc. B* **281**: 20132818.
<http://dx.doi.org/10.1098/rspb.2013.2818>

Received: 29 October 2013

Accepted: 3 December 2013

Subject Areas:

ecology, evolution

Keywords:

life history, slow–fast continuum, metabolic ecology, allometry, scaling

Author for correspondence:

Richard M. Sibly

e-mail: r.m.sibly@reading.ac.uk

Electronic supplementary material is available at <http://dx.doi.org/10.1098/rspb.2013.2818> or via <http://rspb.royalsocietypublishing.org>.



How body mass and lifestyle affect juvenile biomass production in placental mammals

Richard M. Sibly¹, John M. Grady², Chris Venditti¹ and James H. Brown^{2,3}

¹School of Biological Sciences, University of Reading, Reading, UK

²Department of Biology, University of New Mexico, Albuquerque, NM, USA

³Santa Fe Institute, Santa Fe, NM, USA

In mammals, the mass-specific rate of biomass production during gestation and lactation, here called maternal productivity, has been shown to vary with body size and lifestyle. Metabolic theory predicts that post-weaning growth of offspring, here termed juvenile productivity, should be higher than maternal productivity, and juveniles of smaller species should be more productive than those of larger species. Furthermore because juveniles generally have similar lifestyles to their mothers, across species juvenile and maternal productivities should be correlated. We evaluated these predictions with data from 270 species of placental mammals in 14 taxonomic/lifestyle groups. All three predictions were supported. Lagomorphs, perissodactyls and artiodactyls were very productive both as juveniles and as mothers as expected from the abundance and reliability of their foods. Primates and bats were unproductive as juveniles and as mothers, as expected as an indirect consequence of their low predation risk and consequent low mortality. Our results point the way to a mechanistic explanation for the suite of correlated life-history traits that has been called the slow–fast continuum.

1. Introduction

Species vary consistently in the speed at which they progress through their life histories. This allows them to be arrayed quantitatively along a ‘slow–fast’ continuum [1–10]. Life histories that are fast in one part of a lifecycle tend to be fast in others. The mechanistic basis of these associations has been elusive [10]. However, recent developments in metabolic theory suggest that the speed of progress through the life history depends on the rates at which individuals produce biomass, and these in turn depend on metabolic rates and mechanisms of energy and material allocation between maintenance, growth and reproduction [11,12].

Individual mammals produce net new biomass in two phases. First, the mother fuels production during the early stages of the life history prior to weaning, initially by supplying energy and materials for embryonic growth and development across the placenta during gestation, and then by providing nutrients in milk during lactation. Second, the juvenile fuels its own production from weaning to maturity by foraging and allocating a fraction of the assimilated food to growth. We refer to these as maternal and juvenile production, respectively. The rate at which adult female mammals allocate biomass to produce offspring varies with intrinsic biological attributes, such as body size and diet, and extrinsic ecological conditions, such as food availability and predation risk [13]. Much less is known, however, about the lifestyle factors that influence the growth rates of juveniles after weaning. There have been many studies of embryonic, pre-weaning and post-weaning growth in the context of ontogenetic development [14–19], but few treatments, especially of juvenile growth, in the explicit context of a metabolic theory of life history and ecology.

Metabolic theory predicts a close, mechanistic linkage between the rate of metabolic energy expenditure and the rate of production. This is because the synthesis of net new biomass is fuelled by the assimilation and processing of energy and materials. Mass-specific metabolic rates have long been known to vary

negatively with body size and positively with temperature, and mechanistic models of assimilation and biosynthesis predict quantitatively how body size and temperature affect ontogenetic growth rates in both endothermic and ectothermic animals [20–23]. In addition to body size, rates of metabolism and production also depend on ‘lifestyle’, a suite of correlated traits that affect the acquisition and allocation of metabolic resources [13,24,25].

On this basis, we predict the following.

- (i) Juvenile productivity will scale negatively with adult body mass. In endothermic birds and mammals, where body temperature is nearly constant, mass-specific rates of maternal production, here called productivity, scale with body size as $R_i M^b$, where R_i is a normalization constant that differs among taxonomic and lifestyle groups, M is body mass and b is a scaling exponent [13,26]. Mass-specific productivity is lower in larger organisms than in smaller ones, with b usually in the range of -0.25 to -0.35 . This size-dependence has been interpreted as reflecting a fundamental constraint of body size on metabolic rate and consequently on the rate of biomass production [27].
- (ii) Juvenile productivity will be generally greater than maternal productivity. At least two factors are relevant. First, juveniles are smaller than adults, so the above allometric scaling relationships predict that they will have higher mass-specific rates of metabolism and productivity. Second, during lactation, maternal productivity fuels growth of the offspring by supplying milk, which must be ingested and assimilated. This means that the lactating offspring is in effect operating one trophic level higher than its mother, with a trophic transfer efficiency of the order of 0.5 based on data on grey and other seals [28,29]. Trophic transfer losses end at weaning and this contributes to juvenile productivity being greater than maternal productivity.
- (iii) Juvenile and maternal productivity will be positively correlated across species of mammals. After accounting for the effect of body size, most of the residual variation in metabolic rate and maternal productivity can be attributed to differences in lifestyle [13]. This is because rates of both metabolism [25] and production [13] vary with extrinsic environmental factors that affect acquisition and allocation of metabolic resources. So, for example, mammals that feed on abundant green vegetation and marine animal prey tend to have high rates of maternal production, whereas those that have low risk of predation because they are volant, arboreal, fossorial or large tend to have low rates. After weaning, juveniles tend to have similar ecological niches to adults, and these lifestyles should similarly constrain how metabolic resources are acquired from the environment and allocated to growth by juveniles.

We evaluated the above predictions by compiling and analysing a dataset on biomass production of juvenile and adult placental mammals. We calculated maternal productivity as the rate of biomass allocation to offspring prior to weaning. We calculated juvenile biomass production from juvenile growth after weaning when juveniles were foraging independently.

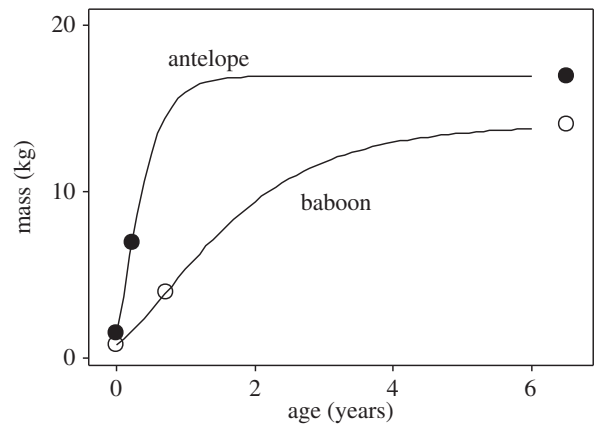


Figure 1. Growth of an antelope, *Gazella dorcas*, and a baboon, *Papio hamadryas*, showing how growth curves can be derived using data for body mass and time for just three key points in the life history: birth, weaning, and adult. Bertalanffy growth constants were calculated from these data using equation (2.4) and then equation (2.1) was used to draw the growth curves shown.

2. Material and methods

Maternal productivity was calculated as the mass-specific rate of production of offspring biomass by a female on an annual basis, so as (offspring mass at weaning) \times (litter size) \times (number of litters per year)/(adult mass), following [30]. The units are grams per gram per year. This measure is the same as that used by Sibly & Brown [13] except that offspring mass is taken not at birth but at weaning, the end of maternal allocation.

In choosing a measure of juvenile productivity our first consideration was to have the same units as maternal productivity, i.e. grams per gram per year. Mass-specific growth rate, here called relative growth rate, is a suitable measure. Second, we needed to take into account how juvenile mammals grow. Post-weaning growth of most mammals is well fitted by the von Bertalanffy growth equation, illustrated in figure 1, which describes the relationship between body mass, m , and age, t , as

$$m = m_{\infty} \left\{ 1 - \left(1 - \left(\frac{m_0}{m_{\infty}} \right)^{1/3} \right) e^{-bt/3} \right\}^3, \quad (2.1)$$

where m_0 is neonate mass at $t = 0$, m_{∞} is the asymptotic maximum body mass at maturity and b is the Bertalanffy rate constant, measured in units of time^{-1} . Relative growth rate can be obtained from equation (2.1) by differentiation, giving

$$\text{relative growth rate} = \frac{1}{m} \frac{dm}{dt} = b \left\{ \left(\frac{m_{\infty}}{m} \right)^{1/3} - 1 \right\}. \quad (2.2)$$

Equation (2.2) shows that relative growth rate is directly proportional to the Bertalanffy time constant, but also varies with juvenile size. Evaluating equation (2.2) at 10, 50 and 90% of adult size, we obtain values of relative growth rate of $1.15 b$, $0.26 b$ and $0.04 b$, respectively. So as weaning size varies systematically with adult size [30,31], it is necessary to control for weaning size when measuring juvenile productivity. In this paper, we estimate relative growth rate at 50% of adult size, when most species (79%) have weaned their offspring (median mass at weaning = 32% of mass at maturity), and we use this as our measure of juvenile productivity. When juvenile mass is 50% of adult size, $m = 0.5m_{\infty}$, and inserting this value into equation (2.2) gives

$$\text{juvenile productivity} = 0.26 b. \quad (2.3)$$

The parameter b is usually obtained by fitting equation (2.1) to data for post-weaning growth measured under ideal conditions in the laboratory. However, if four values—body masses of neonates (m_0), weanlings (m_w) and adults (m_{∞}),

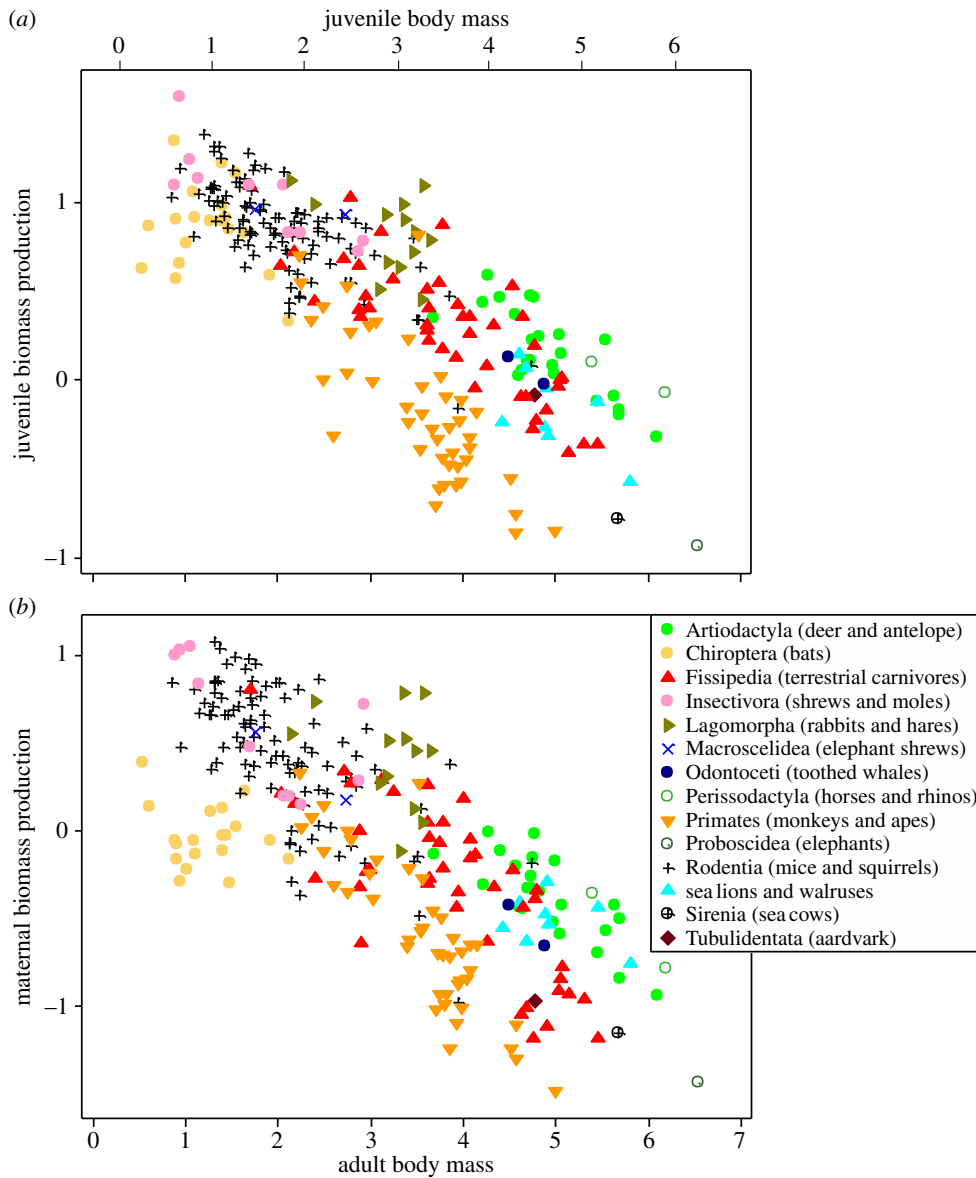


Figure 2. Maternal and juvenile productivities shown in relation to adult body mass in grams in log–log plots. (a) Juvenile biomass production, measured as per cent increase per year as in equation (2.3). (b) Annual biomass production by adult females, expressed in units of grams produced per gram of mother per year, i.e. year⁻¹. In both plots, each point refers to a single species and points are colour-coded by order, except that Carnivora species are split into terrestrial carnivores (Fissipedia) and marine carnivores (here just the income-breeding sea lions and walruses). The same species are plotted in both panels. A scale for juvenile body mass, referred to in the Discussion, has been inserted above (a).

together with age at weaning (t_w)—are known, then the Bertalanffy growth constant can be obtained by rearranging equation (2.1) to estimate b :

$$b = \frac{3}{t_w} \ln \left\{ \frac{1 - (m_0/m_\infty)^{1/3}}{1 - (m_w/m_\infty)^{1/3}} \right\}. \quad (2.4)$$

Although b in equation (2.4) is calculated only from four measurements, these values are very closely correlated with values of b estimated by fitting equation (2.1) to detailed data for growth trajectories of placental mammal species ($r_{88} = 0.98$, $p < 0.001$; J. M. Grady 2013, unpublished data) other than capital breeders (seals (Phocidae) and baleen whales (Mysticeti)), which were therefore excluded from the present analysis.

Our measures of juvenile and maternal productivity described above require species-specific data for litter size, number of litters per year, neonate, weanling, and adult mass and age at weaning. We obtained data for female placental mammals from Ernest [32], with additional data on bats from Jones *et al.* [33]. Following the study of Sibly & Brown [13], we divided the Carnivora into Fissipedia (terrestrial carnivores)

and Pinnipedia (here sea lions and walruses). One bat species, *Miniopterus schreibersii*, was excluded because in the dataset weaning mass exceeded adult mass so b could not be calculated using equation (2.4). The dataset consisted of 270 species in 14 groups, comprising Artiodactyla (deer and antelope, 23 species), Chiroptera (bats, 19), Fissipedia (terrestrial carnivores 43), Insectivora (shrews and moles, 10), Lagomorpha (rabbits and hares, 13), Macroscelidea (elephant shrews, 2), Odontoceti (toothed whales, 2), Odobenidae and Otariidae (sea lions and walruses, 8), Perissodactyla (horses and rhinos, 2), Primates (43), Proboscidea (elephants, 1), Rodentia (mice and squirrels, 102), Sirenia (sea cows, 1) and Tubulidentata (aardvark, 1).

We accounted for shared ancestry in our statistical treatment of these data using the mammalian supertree of Fritz *et al.* [34]. For our t -tests and correlations, we used a phylogenetic generalized least squares approach [35] implemented in the program BAYESTRAITS [36]. Tests of correlation in a phylogenetic context use a likelihood ratio (D) test to compare a model of evolution where two traits are allowed to independently evolve along the branches of a phylogenetic tree (covariance = 0), to a model where the covariance between the traits is estimated [35]. We

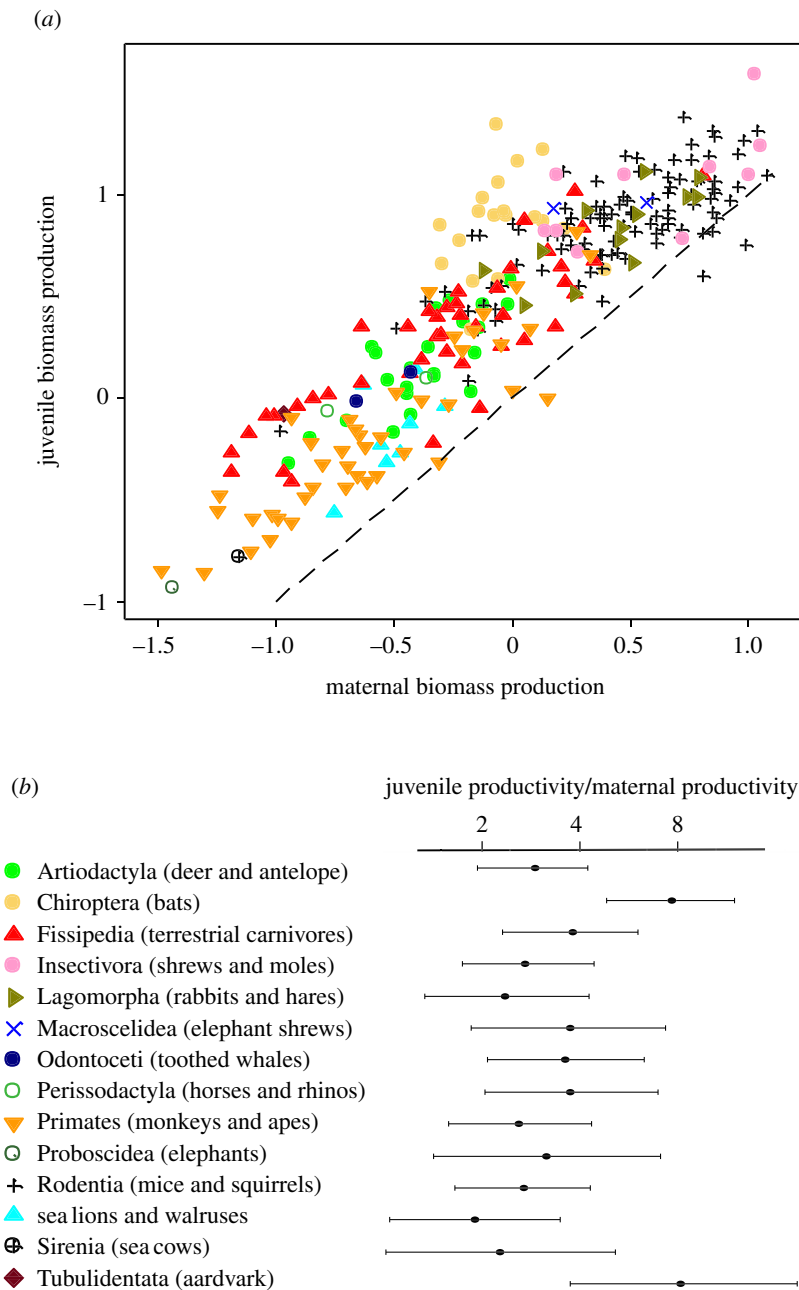


Figure 3. Juvenile productivity in relation to maternal productivity. (a) shows all the data, symbols as in figure 2, one point per species, log–log scales. Dashed line shows where juvenile and maternal productivities are equal. (b) shows juvenile production rate as a multiple of maternal production rate. Points are phylogenetically weighted means for each taxonomic/lifestyle group and bars indicate confidence intervals divided by 1.96, similar to standard errors.

estimate the parameter λ [35] in all analyses to determine the strength of the phylogenetic signal. The parameter λ varies between 0 and 1, where 1 is very strong phylogenetic and 0 is no phylogenetic signal. If $\lambda = 0$, the results are equivalent to tests without accounting for shared ancestry among species. For our phylogenetic generalized linear models (GLMs), we used the R package MCMCglmm [37] which incorporates the phylogenetic structure in the same way as quantitative genetic techniques integrate pedigrees—the phylogeny can be thought of as an inbred pedigree [38]. MCMCglmm estimates parameters by Markov chain Monte Carlo (MCMC) sampling and as such needs prior information. We used very weakly informative priors for all fixed effect (normal distribution, $\mu = 0$ and $\sigma^2 = 10^{10}$) and parameter-expanded priors on the random effect (phylogeny) [37]. The strength of phylogenetic signal is reported in MCMCglmm analyses as phylogenetic heritability, H^2 , but this is identical to λ [38] so here we use λ to refer to phylogenetic signal throughout. The MCMC chains were run for 100 000 000 iterations after

convergence sampling every 10 000 to minimize autocorrelation between successive samples. We report the means of the posterior distributions and 95% confidence intervals (CI).

3. Results

Juvenile and maternal productivities are plotted in relation to adult body mass in figure 2. Data points are for species and are colour-coded by taxon/lifestyle group. Note that productivity is measured in the same units in both graphs, i.e. year^{-1} , so the two measures are directly comparable. The patterns in figure 2a,b generally support our predictions.

- (i) Juvenile productivity scales negatively with adult body mass: both juvenile and maternal productivity scale negatively with body mass in the entire dataset (slope -0.28 , $t = 14.4$, $\lambda = 0.73$, $p = 10^{-35}$ and slope -0.31 ,

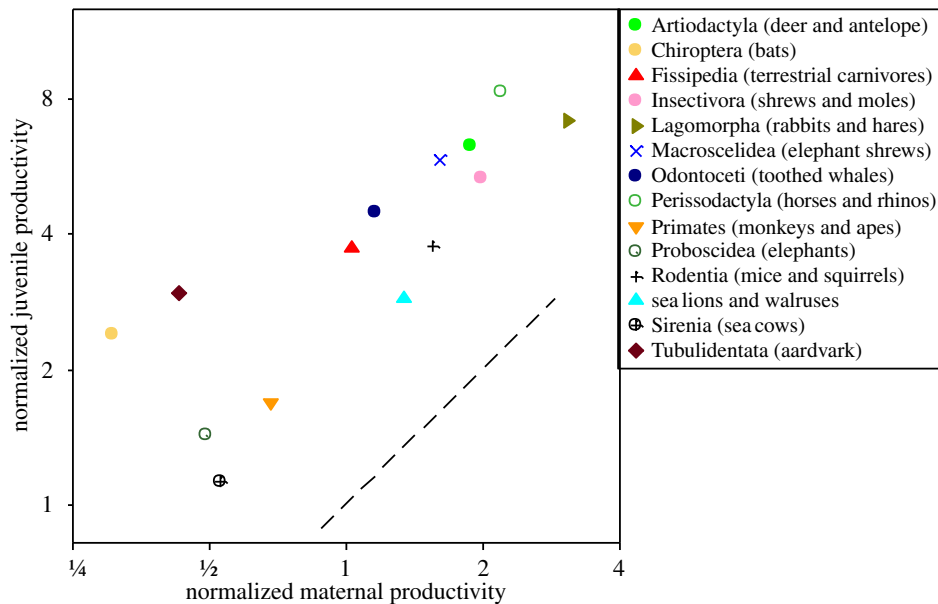


Figure 4. Normalized juvenile productivity plotted against normalized maternal productivity for each of the lifestyle groups after allowing for body mass variation and phylogeny. Symbols as in figure 3*b*. Dashed line shows where juvenile and maternal productivities are equal.

$t = 12.3$, $\lambda = 0.82$, $p = 10^{-28}$, respectively). They are similarly negatively correlated within lifestyle groups where there is good resolution because the range of body mass exceeds two orders of magnitude, in all five of the lifestyle groups for juveniles ($p < 0.05$), and in four out of five for adults ($p < 0.05$; electronic supplementary material, table S1).

- (ii) Juvenile productivity is higher than maternal productivity: a relevant comparison is shown in figure 3*a*, which shows that juvenile rates exceeded maternal rates in 264 of 270 species and all lifestyles. Quantitatively, juvenile rates exceeded maternal rates by an average factor of 3, ranging from around two in lagomorphs, sea lions and walruses and sea cows to around eight in bats and Tubulidentata (figure 3*b*).
- (iii) Juvenile and maternal productivities exhibit similar variation with lifestyle across species of mammals: support can be seen by comparing figure 2*a,b*. In both panels, the lagomorphs and perissodactyls are higher than the bats and primates. More accurate and precise quantification is possible by controlling for the effects of body size and phylogeny. We used a phylogenetic GLM to fit parallel lines through the lifestyle groups in figure 2, following Sibly & Brown [13]. The common slope was -0.30 (CI = -0.35 to -0.25), $\lambda = 0.73$ (CI = 0.64 – 0.79). The elevations (normalization coefficients) were calculated at median body size (609 g). These are referred to as normalized productivities and are shown in figure 4. As expected, there is a strong correlation ($r = 0.81$, $D_1 = 14.92$, $\lambda = 1$, $p < 0.001$).

4. Discussion

Metabolic theory provides a unifying mechanistic framework for understanding energy allocation to growth across all phases of the life history. In placental mammals, energy and materials allocated to produce new biomass comes from two sources: first mothers fuel growth of dependent offspring during gestation and lactation, and then juveniles fuel

their own growth from weaning to maturity. Rates of maternal and juvenile productivity are closely correlated across species, suggesting that fundamental constraints on structure and function largely set the pace of the life history. Both maternal and juvenile productivities are inversely correlated with body size, showing the pervasive effects of metabolic processes and allometric scaling.

Maternal productivity is about 50% lower than that of a newly weaned offspring. This is because lactation introduces an additional trophic level—the mother feeds to produce the milk the offspring feeds on to produce flesh. This inefficiency ends when the offspring is weaned and starts foraging for itself. So post-weaning juveniles are able to be more productive than reproducing females of equivalent size and lifestyle. To assess how much more productive, it is necessary to measure productivity relative to body mass of the producer. So a scale for juvenile body mass has been inserted at the top of figure 2*a* (shifted to the right, because juvenile productivity is assessed at 50% adult body mass). The normalization procedure in figure 4 shows that this makes juveniles 1.23 times more productive than adults ($1.23 = 10^{-0.30 \times \log 0.5}$). Together with the twofold advantage gained by eliminating lactation, this is sufficient to account for the juvenile/adult productivity ratios seen in many of the lifestyle groups in figure 3. However, ratios are higher in the Chiroptera and Tubulidentata, so other factors may sometimes operate as well. Juveniles often must expend more energy than adults on abiotic stresses (e.g. thermoregulation) and biotic challenges (e.g. immune responses), and these costs may vary between lifestyle groups. In addition, ontogenetic shifts in energy allocation from production to maintenance may play a role (see [39]). It will be interesting to see what factors can account for the pattern of variation in the juvenile/maternal productivity ratio seen in figure 3*b*.

The slope of the lines through the lifestyle groups in figure 2 is -0.30 , steeper than the -0.25 expected from metabolic theory. This suggests that larger animals allocate proportionately less energy to production than smaller animals. Energy not used for production fuels maintenance and survival (e.g. [40]), so the slope of -0.30 reflects a

life-history trade-off between production and survival, with larger animals allocating more to survival as discussed by Hamilton *et al.* [30].

After controlling for body size, some of the remaining variation across species in both maternal and juvenile productivity is related to lifestyle and environment, especially food supply and predation risk (figure 4). Specifically, lagomorphs, artiodactyls and perissodactyls have exceptionally high productivities for mammals. This high productivity was interpreted by Sibly & Brown [13] as a direct consequence of diet: abundant and reliable foods allow high rates of ingestion and allocation to offspring, and consequently fast life histories [5,6]. Bats, primates, elephants, aardvarks and sea cows have exceptionally low juvenile and maternal productivities and hence slow life histories. Sibly & Brown [13] interpreted this as an indirect consequence, through 'ecological compensation', of the low mortality rates which result from reduced susceptibility to predation.

We suggest that an energy-based approach provides a unifying framework for understanding patterns of variation in mammal life histories in terms of the uptake and use of the energy that fuels production. The rate of using energy

for production is constrained by body size and lifestyle, but body size has an additional subtle effect because larger animals increasingly prioritize survival over production. Overall, some mammals with certain body sizes and lifestyles are more productive than others, but higher productivities are balanced by increased mortality rates (e.g. 'live fast die young' strategies [8]). Rates of productivity and mortality must equilibrate in the long term, because average population growth rates must be close to zero. This is the principle of ecological compensation [40]. It means that in stable populations the rate of energy added owing to production must match the rate of energy loss because of mortality. So our results point the way to a mechanistic energetic explanation for the suite of correlated life-history traits that has been called the slow-fast continuum.

Acknowledgements. We thank Eva Dettweiler-Robinson for assistance with statistical analyses, and F. Stephen Dobson and an anonymous referee for constructive comments on the manuscript.

Funding statement. For financial support, we thank the National Science Foundation Research Coordination Network, grant DEB 0541625 (R.M.S. and J.H.B.) and National Institutes of Health, grant T32EB009414 (J.M.G. and J.H.B.).

References

- Bielby J, Mace GM, Bininda-Emonds ORP, Cardillo M, Gittleman JL, Jones KE, Orme CDL, Purvis A. 2007 The fast-slow continuum in mammalian life history: an empirical reevaluation. *Am. Nat.* **169**, 748–757. (doi:10.1086/516847)
- Blueweiss L, Fox H, Kudzma V, Nakashima D, Peters R, Sams S. 1978 Relationships between body size and some life-history parameters. *Oecologia* **37**, 257–272. (doi:10.1007/BF00344996)
- Dobson FS. 2007 A lifestyle view of life-history evolution. *Proc. Natl Acad. Sci. USA* **104**, 17 565–17 566. (doi:10.1073/pnas.070 8868104)
- Dobson FS, Oli MK. 2007 Fast and slow life histories of mammals. *Écoscience* **14**, 292–299. (doi:10.2980/1195-6860(2007)14[292:FASLHO]2.0.CO;2)
- Harvey PH, Clutton-Brock TH. 1985 Life history variation in primates. *Evolution* **39**, 559–581. (doi:10.2307/2408653)
- Harvey PH, Read AF, Promislow DEL. 1989 Life history variation in placental mammals: unifying the data with theory. *Oxf. Surv. Evol. Biol.* **6**, 13–32.
- Paemelaere E, Dobson FS. 2011 Fast and slow life histories of carnivores. *Can. J. Zool.* **89**, 692–704. (doi:10.1139/z11-033)
- Promislow DEL, Harvey PH. 1990 Living fast and dying young: a comparative-analysis of life-history variation among mammals. *J. Zool.* **220**, 417–437. (doi:10.1111/j.1469-7998.1990.tb04316.x)
- Read AF, Harvey PH. 1989 Life-history differences among the eutherian radiations. *J. Zool.* **219**, 329–353. (doi:10.1111/j.1469-7998.1989.tb02584.x)
- Ricklefs RE, Wikelski M. 2002 The physiology/life-history nexus. *Trends Ecol. Evol.* **17**, 462–468. (doi:10.1016/s0169-5347(02)02578-8)
- Brown JH, Gillooly JF, Allen AP, Savage VM, West GB. 2004 Toward a metabolic theory of ecology. *Ecology* **85**, 1771–1789. (doi:10.1890/03-9000)
- Sibly RM, Witt CC, Wright NA, Venditti C, Jetz W, Brown JH. 2012 Energetics, lifestyle, and reproduction in birds. *Proc. Natl Acad. Sci. USA* **109**, 10 937–10 941. (doi:10.1073/pnas.1206512109)
- Sibly RM, Brown JH. 2007 Effects of body size and lifestyle on evolution of mammal life histories. *Proc. Natl Acad. Sci. USA* **104**, 17 707–17 712. (doi:10.1073/pnas.0707725104)
- Case TJ. 1978 Evolution and adaptive significance of postnatal-growth rates in terrestrial vertebrates. *Q. Rev. Biol.* **53**, 243–282. (doi:10.1086/410622)
- Pauly D. 1980 On the interrelationships between natural mortality, growth-parameters, and mean environmental-temperature in 175 fish stocks. *J. Conseil* **39**, 175–192. (doi:10.1093/icesjms/39.2.175)
- Peters RH. 1983 *The ecological implications of body size*. Cambridge, UK: Cambridge University Press.
- Ricklefs RE. 1968 Patterns of growth in birds. *Ibis* **110**, 419–451. (doi:10.1111/j.1474-919X.1968.tb00058.x)
- Ricklefs RE. 1973 Patterns of growth in birds. 2. Growth-rate and mode of development. *Ibis* **115**, 177–201. (doi:10.1111/j.1474-919X.1973.tb02636.x)
- Zullinger EM, Ricklefs RE, Redford KH, Mace GM. 1984 Fitting sigmoidal equations to mammalian growth-curves. *J. Mammal.* **65**, 607–636. (doi:10.2307/1380844)
- Hou C, Zuo W, Moses ME, Woodruff WH, Brown JH, West GB. 2008 Energy uptake and allocation during ontogeny. *Science* **322**, 736–739. (doi:10.1126/science.1162302)
- Moses ME, Hou C, Woodruff WH, West GB, Nekola JC, Zuo W, Brown JH. 2008 Revisiting a model of ontogenetic growth: estimating model parameters from theory and data. *Am. Nat.* **171**, 632–645. (doi:10.1086/587073)
- West GB, Brown JH, Enquist BJ. 2001 A general model for ontogenetic growth. *Nature* **413**, 628–631. (doi:10.1038/35098076)
- Zuo W, Moses ME, West GB, Hou C, Brown JH. 2012 A general model for effects of temperature on ectotherm ontogenetic growth and development. *Proc. R. Soc. B* **279**, 1840–1846. (doi:10.1098/rspb.2011.2000)
- McNab BK. 1986 The influence of food habits on the energetics of eutherian mammals. *Ecol. Monogr.* **56**, 1–19. (doi:10.2307/2937268)
- McNab BK. 2008 An analysis of the factors that influence the level and scaling of mammalian BMR. *Comp. Biochem. Physiol. Mol. Integr. Physiol.* **151**, 5–28. (doi:10.1016/j.cbpa.2008.05.008)
- Sibly RM. 2012 Life history. In *Metabolic ecology: a scaling approach* (eds RM Sibly, JH Brown, A Kodric-Brown), pp. 57–66. Oxford, UK: Wiley-Blackwell.
- Brown JH, Sibly RM. 2006 Life-history evolution under a production constraint. *Proc. Natl Acad. Sci. USA* **103**, 17 595–17 599. (doi:10.1073/pnas.0608522103)
- Lang SLC, Iverson SJ, Bowen WD. 2011 The influence of reproductive experience on milk energy output and lactation performance in the grey seal (*Halichoerus grypus*). *PLoS ONE* **6**, e19487. (doi:10.1371/journal.pone.0019487)
- McNab BK. 2002 *The physiological ecology of vertebrates: a view from energetics*. Ithaca, NY: Cornell University Press.
- Hamilton MJ, Davidson AD, Sibly RM, Brown JH. 2011 Universal scaling of production rates

- across mammalian lineages. *Proc. R. Soc. B* **278**, 560–566. (doi:10.1098/rspb.2010.1056)
31. Millar JS. 1977 Adaptive features of mammalian reproduction. *Evolution* **31**, 370–386. (doi:10.2307/2407759)
 32. Ernest SKM. 2003 Life history characteristics of placental non-volant mammals. *Ecology* **84**, 3402. (doi:10.1890/02-9002)
 33. Jones KE *et al.* 2009 PanTHERIA: a species-level database of life history, ecology, and geography of extant and recently extinct mammals. *Ecology* **90**, 2648. (doi:10.1890/08-1494.1)
 34. Fritz SA, Bininda-Emonds ORP, Purvis A. 2009 Geographical variation in predictors of mammalian extinction risk: big is bad, but only in the tropics. *Ecol. Lett.* **12**, 538–549. (doi:10.1111/j.1461-0248.2009.01307.x)
 35. Pagel M. 1999 Inferring the historical patterns of biological evolution. *Nature* **401**, 877–884. (doi:10.1038/44766)
 36. Pagel M, Meade A, Barker D. 2004 Bayesian estimation of ancestral character states on phylogenies. *Syst. Biol.* **53**, 673–684. (doi:10.1080/10635150490522232)
 37. Hadfield JD. 2010 MCMC methods for multi-response generalized linear mixed models: the MCMCglmm R package. *J. Stat. Softw.* **33**, 1–22.
 38. Hadfield JD, Nakagawa S. 2010 General quantitative genetic methods for comparative biology: phylogenies, taxonomies and multi-trait models for continuous and categorical characters. *J. Evol. Biol.* **23**, 494–508. (doi:10.1111/j.1420-9101.2009.01915.x)
 39. Hou C, Bolt KM, Bergman A. 2011 A general model for ontogenetic growth under food restriction. *Proc. R. Soc. B* **278**, 2881–2890. (doi:10.1098/rspb.2011.0047)
 40. Sibly RM, Calow P. 1986 *Physiological ecology of animals*. Oxford, UK: Blackwell Scientific Publications.