



The unusual stoichiometry of ADP activation of the K_{ATP} channel

Eric Hosy^{1,2,3†} and Michel Vivaudou^{1,2,3*}

¹ Institut de Biologie Structurale, University Grenoble Alpes, Grenoble, France

² Laboratory of Excellence, Ion Channel Science and Therapeutics, CNRS, Institut de Biologie Structurale, Grenoble, France

³ CEA, DSV, Institut de Biologie Structurale, Grenoble, France

Edited by:

Ali Mobasheri, University of Bradford, UK

Reviewed by:

Richard Barrett-Jolley, University of Liverpool, UK

Noel W. Davies, University of Leicester, UK

*Correspondence:

Michel Vivaudou, Institut de Biologie Structurale, 6 Rue Jules Horowitz, 38000 Grenoble, France
e-mail: vivaudou@ibs.fr

† Present address:

Eric Hosy, Institut interdisciplinaire de Neurosciences CNRS UMR 5297, Université de Bordeaux, Bordeaux, France

K_{ATP} channels, oligomers of 4 pore-forming Kir6.2 proteins and 4 sulfonylurea receptors (SUR), sense metabolism by monitoring both cytosolic ATP, which closes the channel by interacting with Kir6.2, and ADP, which opens it via SUR. SUR mutations that alter activation by ADP are a major cause of K_{ATP} channelopathies. We examined the mechanism of ADP activation by analysis of single-channel and macropatch recordings from *Xenopus* oocytes expressing various mixtures of wild-type SUR2A and an ADP-activation-defective mutant. Evaluation of the data by a binomial distribution model suggests that wild-type and mutant SURs freely co-assemble and that channel activation results from interaction of ADP with only 2 of 4 SURs. This finding explains the heterozygous nature of most K_{ATP} channelopathies linked to mutations altering ADP activation. It also suggests that the channel deviates from circular symmetry and could function as a dimer-of-dimers.

Keywords: K-ATP channel, sulfonylurea receptor, ABC transporter, ADP, hyperinsulinism

INTRODUCTION

K_{ATP} channels are metabolic sensors that play key roles in cardio-protection and glycemia control. They are formed by association of a K^+ channel subunit Kir6.x and a regulatory subunit, the sulfonylurea receptor SUR, of the ABC protein family (Moreau et al., 2005b; Nichols, 2006). The channel complex is a hetero-octamer with 4 Kir6.2 delimiting an ATP-inhibited inwardly rectifying K^+ channel surrounded by 4 SUR subunits (Mikhailov et al., 2005). This stoichiometry, imposed by the presence of endoplasmic reticulum retention signals in Kir6.2 (Zerangue et al., 1999), appears independent of the nature of the SUR isoform, be it SUR1, SUR2, or a mixture of both (Chan et al., 2008; Wheeler et al., 2008). Intracellular ATP causes channel closure by binding to 1 of the 4 Kir6.2s (Markworth et al., 2000) while ADP, interacting with the nucleotide-binding domains (NBDs) of SUR in a Mg^{2+} -dependent fashion, promotes its opening (Nichols, 2006). The conjunction of these effects underlies the ability of the channel to gate as a function of the cytoplasmic ATP/ADP ratio, and their deregulation is at the origin of several genetic diseases. In particular, SUR mutations that alter activation by ADP lead to recessive and dominant forms of pancreatic (Shyng et al., 1998; Huopio et al., 2000; Dunne et al., 2004) and cardiac disorders (Bienengraeber et al., 2004; Olson et al., 2007).

It is now recognized that nucleotidic regulations of the K_{ATP} channel involve intricate enzymatic mechanisms both within the channel subunits and in the environmental context of the cell (Zingman et al., 2002; Alekseev et al., 2005). Nonetheless, the relationships between activity of isolated channels and nucleotide concentrations remain consistent with classical ligand-receptor interactions. In particular, the relation between channel

activation and ADP is well approximated by a non-cooperative bimolecular agonist-receptor model (Forestier and Vivaudou, 1993; Matsuo et al., 2002; Dupuis et al., 2008; Proks et al., 2010). Such a model provides a simple framework that accurately reflects the global response of the channel and bypasses detailed molecular intricacies. We used this model for the present study of the stoichiometry of ADP activation of the K_{ATP} channel using a SUR mutant that is ADP-activation defective.

MATERIALS AND METHODS

Experimental conditions were as previously described by Hosy et al. (2007). Site-directed mutagenesis of mouse Kir6.2 and rat SUR2A (the kind gift of Dr. S. Seino, Chiba, Japan) was accomplished with the QuickChange kit (Stratagene). K_{ATP} channels were heterologously expressed in *Xenopus laevis* oocytes by microinjection of RNAs coding for the Kir6.2 and SUR2A subunits. *Xenopus laevis* oocytes were surgically removed from anesthetized *Xenopus laevis* females using procedures that conformed to European regulations for animal handling and experiments, and were approved by governmental services (Authorization N°38 08 10 granted to Michel Vivaudou by the local veterinary agency, Directeur Départemental des Services Vétérinaires, Ministère de l'Agriculture et de la Pêche, on 22 February 2008, valid until 06 July 2015) and the Institutional Ethical Committee (Ethical Committee of Commissariat à l'Energie Atomique et aux Energies Alternatives for animal experiments, assessment n°12-040 on 23 December 2012). The quality and concentration of *in-vitro* transcribed cRNAs were estimated by electrophoresis and spectrophotometry. *Xenopus laevis* oocytes were injected with 2 ng of Kir6.2 cRNA and 6 ng of various mixes of WT and

mutated SUR2A cRNA. These amounts were reduced 100-fold for recordings of single channels. Before patch-clamp experiments, microinjected oocytes were incubated for more than 2 days at 19°C in Barth's solution (in mM: 1 KCl, 0.82 MgSO₄, 88 NaCl, 2.4 NaHCO₃, 0.41 CaCl₂, 16 Hepes, pH 7.4) supplemented with 100 U·ml⁻¹ penicillin, streptomycin and gentamycin.

Channels were characterized in excised inside-out patches at room temperature. Patch pipettes contained (in mM) 154 K⁺, 146 Cl⁻, 5 Mg²⁺, and 10 PIPES-KOH (pH 7.1). They were bathed in solutions which all contained (in mM) 174 K⁺, 40 Cl⁻, 1 EGTA, 1 Mg²⁺, 10 PIPES-KOH (pH 7.1), and methanesulfonate⁻ as the remaining anions. ATP and ADP were added as specified. In those conditions, pipettes had a resistance of ~2 MΩ, except for single-channel recordings where thinner pipettes with a resistance of ~10 MΩ were employed. Membrane potential was -50 mV. Currents were recorded with a Bio-logic RK300 amplifier, filtered at 300 Hz, sampled at 1 kHz, and processed with custom software. Application of the various solutions was performed with a Bio-Logic RSC100 rapid solution changer controlled by custom software. ADP was applied for a time sufficient to reach steady-state, typically 10 s for multichannel recordings and 30–60 s for single-channel recordings. Amplitude histograms were accumulated over 20–40 s before and ~10 s after application of ADP. The tracings shown in the illustrations represent continuous records. Results are displayed as mean ± s.e.m. We excluded from the statistics all patches that showed significant rundown during recording, a very common occurrence when single channels were recorded in the absence of ATP.

Assuming random assembly of WT and mutated SURs, the probability P_n that a tetrameric channel contains n wild-type subunits should follow a binomial distribution:

$$P_n = \binom{4}{n} \cdot p^n \cdot (1-p)^{(4-n)}$$

where p is the fraction of subunits that are wild-type.

Root-mean-square-deviation (rmsd), an indicator of the distance between experimental data and model predictions, was used as a quantitative measure of the adequacy between the various models and the data.

RESULTS

Intracellular MgADP has dual opposite effects on K_{ATP} channels. It causes inhibition by binding to the nucleotide site of Kir6.2 and it causes activation by binding to the NBDs of SUR (Dupuis et al., 2008; Proks et al., 2010). Activation requires Mg²⁺ while inhibition does not. In the presence of Mg²⁺, the two effects add up to produce either an increase in channel activity at lower ADP concentrations or a decrease at higher concentrations (Figure 1A).

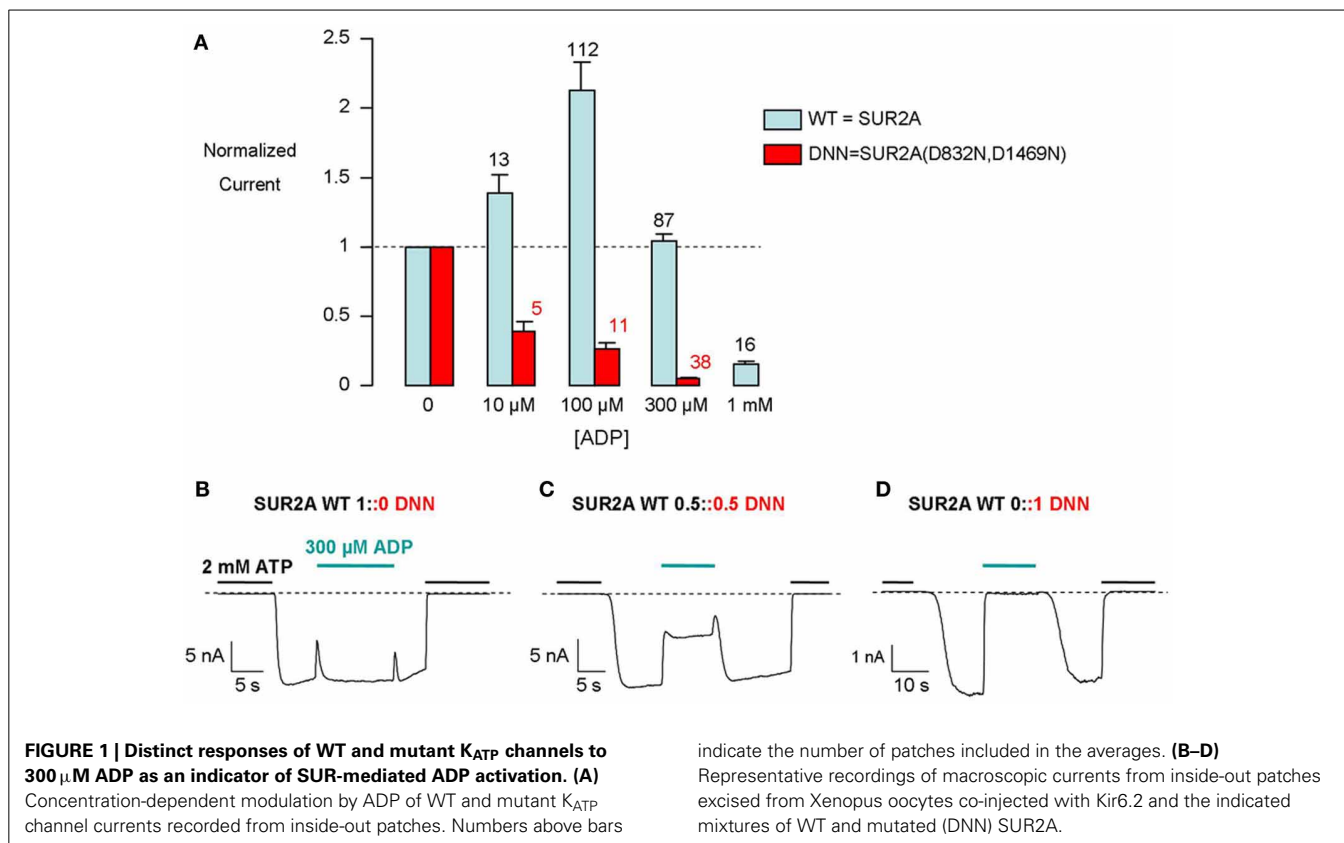
Activation by MgADP depends on the integrity of the NBDs of SUR and is abolished by mutations of key NBD residues, such as the Walker B aspartates (Gribble et al., 1997b; D'hahan et al., 1999). We mutated these residues in both NBDs (D832N for NBD1 and D1469N for NBD2) of SUR2A. This mutated SUR2A, termed DNN, coexpressed with Kir6.2, formed channels that are no longer activated by ADP (Figure 1A). We interpret these observations by the absence of functional MgADP activatory sites

in SUR2A-DNN due to the inability of the mutated NBDs to bind MgADP (Ueda et al., 1997) or to transduce binding into Kir6.2 upregulation.

In 1 mM Mg²⁺, 300 μM ADP elicits little change in the activity of SUR2A+Kir6.2 channels, because activation (through SUR2A) nearly equals inhibition (through Kir6.2) at that concentration (Figure 1B) while it strongly inhibits SUR2A-DNN+Kir6.2 channels (Figure 1D). We selected this concentration in this work as it is a concentration at which inhibition is almost maximal (Figure 1A) but insufficient to mask activation.

How many MgADP-competent SURs are necessary to sustain MgADP activation of the K_{ATP} channel? To estimate this number, we recorded the MgADP response of K_{ATP} channels in *Xenopus* oocytes that had been injected with various mixtures of the RNAs coding for WT and D832N+D1469N mutant SURs. With an equimolar mixture, channels presented an intermediate sensitivity to MgADP (Figure 1C). Indeed, 300 μM MgADP led to a ~50% decrease in current, midpoint between the effects observed with WT-only and mutant-only channels. Three hypotheses would be consistent with this intermediate sensitivity of the macroscopic currents. Hypothesis 1: WT and mutant subunits cannot coassemble within the same complex: Two populations of channels would exist, ADP-sensitive channels with 4 WT SURs and ADP-insensitive channels with 4 mutant SURs. Hypothesis 2: WT and mutant subunits coassemble randomly and MgADP stimulation varies gradually with mutant subunits content: This could happen if each SUR subunit acted independently to produce a fraction of the maximal activation. Hypothesis 3: WT and mutant subunits coassemble randomly and channels display only 2 phenotypes, WT (full stimulation by MgADP) or mutant (no stimulation), as a function of their subunit composition: This hypothesis would be consistent with one or more SUR subunits triggering a switch of the whole complex from an inactive to a single active state.

To test hypothesis 2, we examined the effect of ADP on single-channel activity in oocytes expressing an equimolar mixture of WT and mutant subunits (Figure 2). To reduce the number of channels per patch, oocytes were injected with 100-fold less RNA than in the rest of this study and smaller patch pipettes were employed. In spite of these maneuvers, a small fraction of patches contained only 1 or 2 channels which did not fall silent during recording because of rundown. Furthermore, we discarded those patches with 2 channels when only one channel retained robust activity upon ADP application, as this indicated that the 2 channels had probably different number of mutant SUR subunits, one being strongly inhibited by ADP, the other being unaffected. These experiments revealed that channels are either fully inhibited by ADP as in Figure 2B or barely affected as in Figure 2A. The effect of ADP on single channels was quantified by computing NPo from amplitude histograms in control and in 300 μM ADP and by calculating the ratio of the two, yielding Po(ADP)/Po(Control). This value was found to be either close to 1 (ADP-activated) or close to 0 (ADP-inhibited) (Figure 2C). Furthermore, as shown in Figure 2D, the effect of ADP on single ADP-activated channels matched the effect on WT-only macroscopic currents. The same was true for single ADP-inhibited channels and mutant-only macroscopic currents. The data imply



a all-or-none effect: Channels are either activated by ADP or insensitive to it. Contrary to hypothesis 2, there is no intermediate ADP activation as a function of the number of mutant subunits.

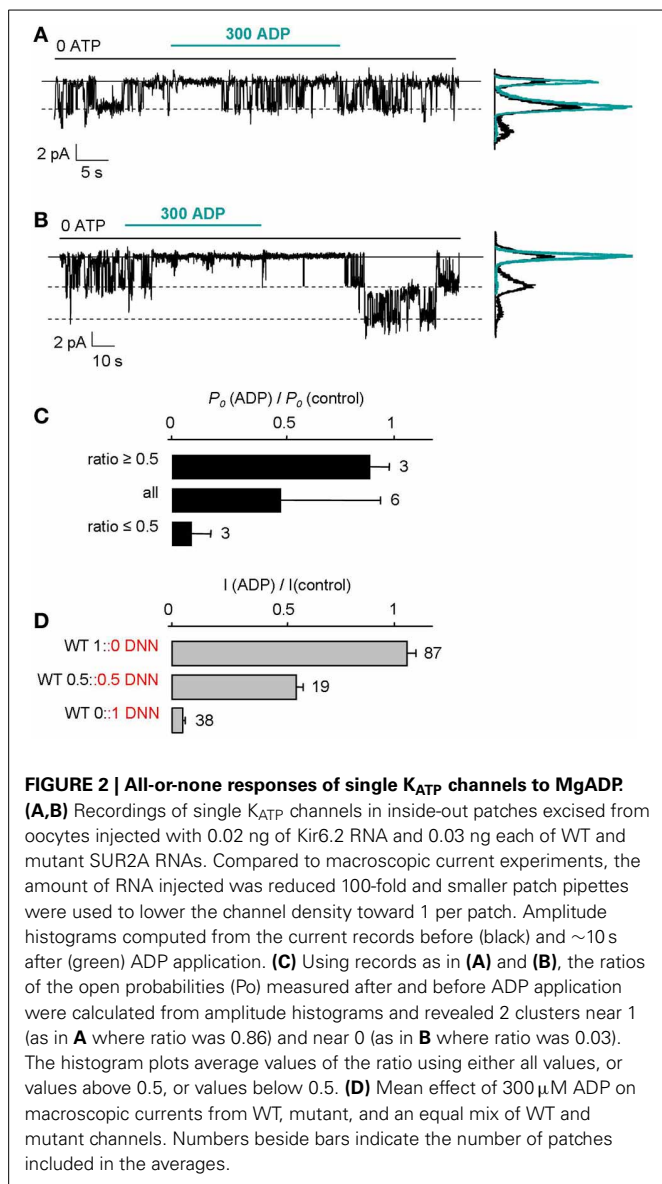
These results are not compatible with hypothesis 2 but do not allow distinguishing hypotheses 1 and 3. Keeping total amount of mRNA constant, we varied the quantities of WT and mutant RNA (WT::DNN). Eight different proportions were co-injected in oocytes. The effects of 300 μ M ADP on macroscopic excised-patch currents are illustrated in **Figures 3A–H** and summarized in the graph of **Figure 3I** as the ratio of the current in ADP over that in control. This ratio ranged from 0.05 for pure mutant channels to 1.1 for pure WT channels. As a measure of the fraction of channels activatable by ADP for each WT::DNN fraction, we calculated the normalized ADP-activated current as the increment over the pure mutant value (**Figure 4B**). This value is expected to be proportional to the fraction of ADP-activatable channels if we assume that all WT/mutant combination channels are equally sensitive to inhibition by ADP and that all ADP-activatable combinations are equally sensitive to activation by ADP, as suggested by the single-channel data. Hypothesis 1 (WT and mutant cannot coassemble) predicts that the number of WT, ADP-activated channels should be proportional to the quantity of WT subunits. It corresponds to the straight dotted line in **Figure 4B**. Experimental data deviate significantly from this line, therefore contradicting hypothesis 1, i.e., WT and mutant subunits do coassemble within the same complex. This conclusion is consistent with reports that SUR1 and SUR2A can randomly assemble in spite of having >500 different residues (Chan et al.,

2008; Wheeler et al., 2008). This leaves us with hypothesis 3, random assembly of subunits and two clear-cut, ADP-responsive and ADP-irresponsive, phenotypes. In that case, the fraction of each SUR combination as a function of the relative proportion of mutant subunits should follow a binomial distribution (see Methods) as represented in **Figure 4A**. Unlike channels possessing 0, 1, 3, and 4 mutant subunits, channels having 2 mutant subunits are of two types: channels with adjacent mutant SUR2A and channels with diametrically-opposite mutant SUR2A. The probability of each type is equal and represented by the solid black line (marked 2*) in **Figure 4A**.

The predictions of **Figure 4A** yield the fraction of channels having at least n WT subunits, n ranging from 1 to 4, represented as the colored curves in **Figure 4B**. An additional curve, line 2*, is drawn that gives the fraction of channels having at least 2 adjacent WT subunits. The same curve applies to 2 diametrically-opposite WT subunits. Taking rmsd (values in legend of **Figure 4**) as a measure of the difference between experimental data and model, the experimental data match curve $n \geq 2^*$ best with an rmsd >2-fold lower than the linear, no-mixing model and >3-fold lower than any of the other models.

DISCUSSION

Our results establish that activation of the K_{ATP} channel by MgADP requires interaction with more than 1 SUR subunit and less than 4 subunits, a surprising finding given the expected tetrameric symmetry of the channel. The evidence further suggests interaction with 2 SUR subunits. The position



of these subunits appears important. Channels formed by 2 intact SURs and 2 defective SURs can adopt 2 configurations with either adjacent or opposite intact SURs (Figure 4). These configurations are not equivalent with respect to MgADP activation because our experimental data are consistent with one being responsive and the other not. This unusual stoichiometry contrasts with that of other SUR ligands, K_{ATP} channel openers and sulfonylurea blockers, that need interact with only one SUR to affect gating (Dörschner et al., 1999; Gross et al., 1999). Although there is considerable crosstalk in their effects (Gribble et al., 1997a; D'hahan et al., 1999), these modulators target different regions of SUR—MgADP acting on the cytosolic NBDs and openers/blockers acting on the trans-membrane domains (Moreau et al., 2000, 2005a; Vila-Carriles et al., 2007). Our conclusion emphasizes a further difference in how these modulators work, suggesting separate mechanisms of action.

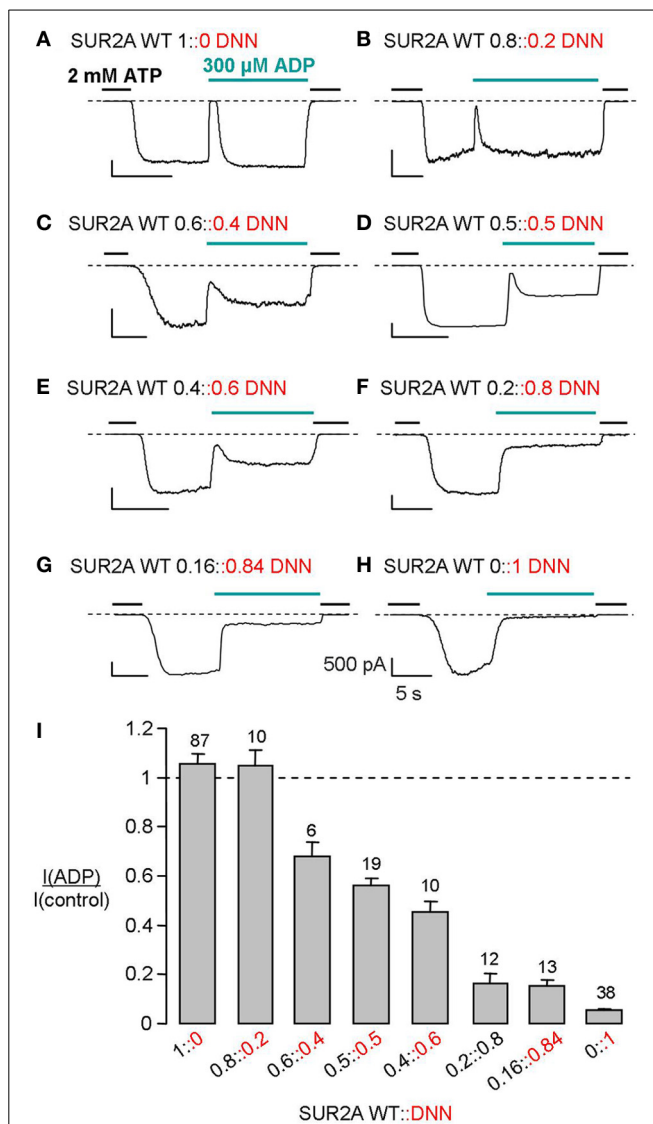
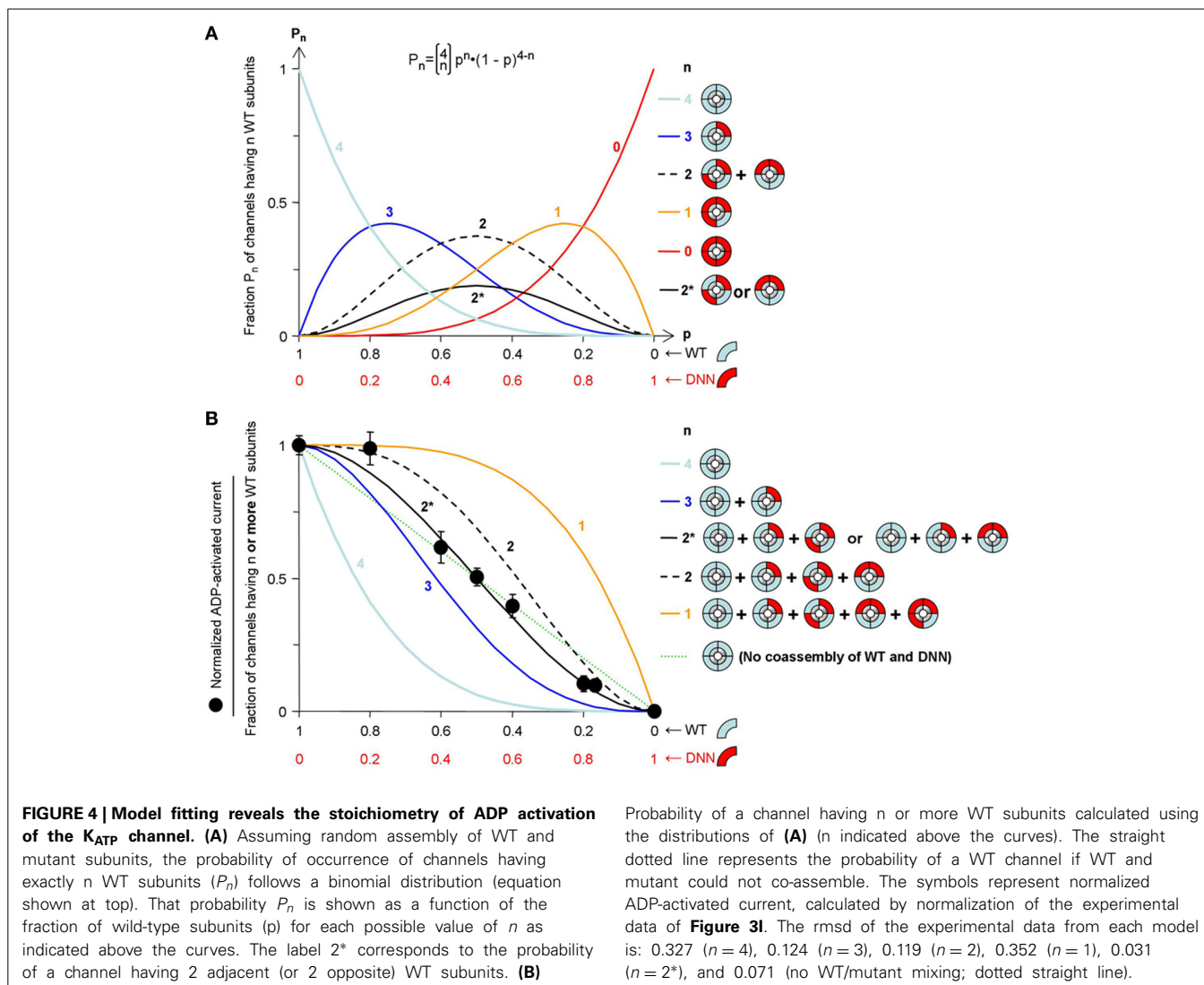


FIGURE 3 | Effect of ADP varies gradually with the ratio of WT to mutant SUR subunits. (A–H) MgADP responses of macroscopic currents recorded from *Xenopus* oocytes co-expressing Kir6.2 and the indicated mixtures of WT and mutant (DNN) SUR2A. (I) Average currents recorded in 300 μ M ADP normalized to the current measured before in nucleotide-free solution. Numbers above bars indicate the number of patches included in the averages. Normalization was necessary because of the intrinsic variability of the oocyte system. The amplitudes in nA of the currents measured in 0 ATP before ADP application were on average (\pm s.e.m.): 4.4 ± 0.6 (WT 1::0 DNN), 1 ± 0.5 (WT 0.8::0.2 DNN), 1.3 ± 0.4 (WT 0.6::0.4 DNN), 5.3 ± 1.4 (WT 0.5::0.5 DNN), 1.4 ± 0.4 (WT 0.4::0.6 DNN), 1.6 ± 0.7 (WT 0.2::0.8 DNN), 3.5 ± 1 (WT 0.16::0.84 DNN), and 1.5 ± 0.3 (WT 0::1 DNN). This variability could not be attributed to a specific construct because experiments performed on the same day with the same batch of oocytes revealed no significant difference.

It is thought that the K_{ATP} channel complex possess a 4-fold rotational symmetry although the available structural data (Mikhailov et al., 2005; Fotinou et al., 2013) lack sufficient resolution to definitely prove that assertion. A stoichiometry of 2 ADP sites reflects a functional asymmetry that would be consistent



with the SURs operating in pairs. Evidence has shown this to be the case for the transporter MRP1, a homologous ABC protein (Yang et al., 2007). One may speculate that SUR modulates gating of Kir6.2 through 2 pathways: a cytoplasmic pathway, used by MgADP, that connects the SUR NBDs to the large cytosolic extension of Kir6.2, and a membrane pathway, used by openers and blockers, that connects the transmembrane domains of the 2 proteins. Indeed, we previously showed that three residues in the cytoplasmic loop connecting TMD2 and NBD2 are essential to mediate ADP activation but not sulfonylurea inhibition (Dupuis et al., 2008). On a molecular model of SUR1 (Bessadok et al., 2011), these residues are on the lateral face of NBD2, well positioned to interact with Kir6.2 and could therefore be part of this cytoplasmic pathway. We have also shown that Kir6.2 gating can be controlled by exerting mechanical force through its cytoplasmic N-terminus (Moreau et al., 2008; Niescierowicz et al., 2014). The functional switch of the cytoplasmic pathway could be a dimer, thus requiring 2 ADP binding events (Ulens and Siegelbaum, 2003), while that of the membrane pathway

could be a monomer requiring a single sulfonylurea binding event.

Physiologically, the observed stoichiometry predicts that, in human diseases associated with mutations causing deficient MgADP responses, heterozygous subjects should have half the normal K_{ATP} channel response to ADP. Although free of the severe homozygous symptoms, these individuals might therefore be susceptible to abnormal responses in conditions of metabolic imbalance. This has indeed been reported for mutations of SUR2 that compromise MgADP responsiveness and increase susceptibility to cardiac diseases (Bienengraeber et al., 2004; Olson et al., 2007). In the case of the pancreatic isoform SUR1, mutations that interfere with ADP activation cause mild forms of hyperinsulinism in homozygous carriers (Dunne et al., 2004; Gloyn et al., 2006). Except for rare cases (Huopio et al., 2000; Thornton et al., 2003), heterozygous subjects are not obviously affected although detailed studies on this point are lacking apart from one mutation, V287D (Huopio et al., 2002) that affects channel subunit assembly and trafficking rather than MgADP

activation (Chan et al., 2003). Because of the predominant role of K_{ATP} channels in the control of insulin secretion, a 50% impairment should be a cause for concern and could warrant further attention.

ACKNOWLEDGMENTS

This work was funded by CNRS (Centre National de la Recherche Scientifique) and CEA (Commissariat à l'Énergie Atomique) and made possible by a postdoctoral fellowship to Eric Hosy from CEA (Programme toxicologie nucléaire environnementale). Our laboratory is a member of the French National Laboratory of Excellence « Ion Channel Science and Therapeutics » supported by a network grant from ANR (ANR-11-LABX-0015-01).

REFERENCES

- Alekseev, A. E., Hodgson, D. M., Karger, A. B., Park, S., Zingman, L. V., and Terzic, A. (2005). ATP-sensitive K^+ channel channel/enzyme multimer: metabolic gating in the heart. *J. Mol. Cell. Cardiol.* 38, 895–905. doi: 10.1016/j.yjmcc.2005.02.022
- Bessadok, A., Garcia, E., Jacquet, H., Martin, S., Garrigues, A., Loiseau, N., et al. (2011). Recognition of sulfonylurea receptor (ABCC8/9) ligands by the multidrug resistance transporter P-glycoprotein (ABCB1): functional similarities based on common structural features between two multispecific ABC proteins. *J. Biol. Chem.* 286, 3552–3569. doi: 10.1074/jbc.M110.155200
- Bienengraeber, M., Olson, T. M., Selivanov, V. A., Kathmann, E. C., O'Coilain, F., Gao, F., et al. (2004). ABCC9 mutations identified in human dilated cardiomyopathy disrupt catalytic K_{ATP} channel gating. *Nat. Genet.* 36, 382–387. doi: 10.1038/ng1329
- Chan, K. W., Wheeler, A., and Csanády, L. (2008). Sulfonylurea receptors type 1 and 2A randomly assemble to form heteromeric K_{ATP} channels of mixed subunit composition. *J. Gen. Physiol.* 131, 43–58. doi: 10.1085/jgp.200709894
- Chan, K. W., Zhang, H., and Logothetis, D. E. (2003). N-terminal transmembrane domain of the SUR controls trafficking and gating of Kir6 channel subunits. *EMBO J.* 22, 3833–3843. doi: 10.1093/emboj/cdg376
- D'hahan, N., Moreau, C., Prost, A. L., Jacquet, H., Alekseev, A. E., Terzic, A., et al. (1999). Pharmacological plasticity of cardiac ATP-sensitive potassium channels toward diazoxide revealed by ADP. *Proc. Natl. Acad. Sci. U.S.A.* 96, 12162–12167. doi: 10.1073/pnas.96.21.12162
- Dörschner, H., Brekardin, E., Uhde, I., Schwanstecher, C., and Schwanstecher, M. (1999). Stoichiometry of sulfonylurea-induced ATP-sensitive potassium channel closure. *Mol. Pharmacol.* 55, 1060–1066.
- Dunne, M. J., Cosgrove, K. E., Shepherd, R. M., Aynsley-Green, A., and Lindley, K. J. (2004). Hyperinsulinism in infancy: from basic science to clinical disease. *Physiol. Rev.* 84, 239–275. doi: 10.1152/physrev.00022.2003
- Dupuis, J. P., Revilloud, J., Moreau, C. J., and Vivaudou, M. (2008). Three C-terminal residues from the sulphonylurea receptor contribute to the functional coupling between the K_{ATP} channel subunits SUR2A and Kir6.2. *J. Physiol.* 586, 3075–3085. doi: 10.1113/jphysiol.2008.152744
- Forestier, C., and Vivaudou, M. (1993). Modulation by Mg^{2+} and ADP of ATP-sensitive potassium channels in frog skeletal muscle. *J. Membr. Biol.* 132, 87–94. doi: 10.1007/BF00233054
- Fotinou, C., Aittoniemi, J., de Wet, H., Polidori, A., Pucci, B., Sansom, M. S., et al. (2013). Tetrameric structure of SUR2B revealed by electron microscopy of oriented single particles. *FEBS J.* 280, 1051–1063. doi: 10.1111/febs.12097
- Gloyn, A. L., Siddiqui, J., and Ellard, S. (2006). Mutations in the genes encoding the pancreatic beta-cell K_{ATP} channel subunits Kir6.2 (KCNJ11) and SUR1 (ABCC8) in diabetes mellitus and hyperinsulinism. *Hum. Mutat.* 27, 220–231. doi: 10.1002/humu.20292
- Gribble, F. M., Tucker, S. J., and Ashcroft, F. M. (1997a). The essential role of the Walker A motifs of SUR1 in K_{ATP} channel activation by Mg-ADP and diazoxide. *EMBO J.* 16, 1145–1152. doi: 10.1093/emboj/16.6.1145
- Gribble, F. M., Tucker, S. J., and Ashcroft, F. M. (1997b). The interaction of nucleotides with the tolbutamide block of cloned ATP-sensitive K^+ channel currents expressed in *Xenopus* oocytes: a reinterpretation. *J. Physiol.* 504 (Pt 1), 35–45. doi: 10.1111/j.1469-7793.1997.00035.x
- Gross, I., Toman, A., Uhde, I., Schwanstecher, C., and Schwanstecher, M. (1999). Stoichiometry of potassium channel opener action. *Mol. Pharmacol.* 56, 1370–1373.
- Hosy, E., Dérand, R., Revilloud, J., and Vivaudou, M. (2007). Remodelling of the SUR-Kir6.2 interface of the K_{ATP} channel upon ATP binding revealed by the conformational blocker rhodamine 123. *J. Physiol.* 582, 27–39. doi: 10.1113/jphysiol.2007.134288
- Huopio, H., Reimann, F., Ashfield, R., Komulainen, J., Lenko, H. L., Rahier, J., et al. (2000). Dominantly inherited hyperinsulinism caused by a mutation in the sulfonylurea receptor type 1. *J. Clin. Invest.* 106, 897–906. doi: 10.1172/JCI9804
- Huopio, H., Vauhkonen, I., Komulainen, J., Niskanen, L., Otonkoski, T., and Laakso, M. (2002). Carriers of an inactivating beta-cell ATP-sensitive K^+ channel mutation have normal glucose tolerance and insulin sensitivity and appropriate insulin secretion. *Diabetes Care* 25, 101–106. doi: 10.2337/diacare.25.1.101
- Markworth, E., Schwanstecher, C., and Schwanstecher, M. (2000). ATP4- mediates closure of pancreatic beta-cell ATP-sensitive potassium channels by interaction with 1 of 4 identical sites. *Diabetes* 49, 1413–1418. doi: 10.2337/diabetes.49.9.1413
- Matsuo, I., Dabrowski, M., Ueda, K., and Ashcroft, F. M. (2002). Mutations in the linker domain of NBD2 of SUR inhibit transduction but not nucleotide binding. *EMBO J.* 21, 4250–4258. doi: 10.1093/emboj/cdf419
- Mikhailov, M. V., Campbell, J. D., de Wet, H., Shimomura, K., Zadek, B., Collins, R. F., et al. (2005). 3-D structural and functional characterization of the purified K_{ATP} channel complex Kir6.2-SUR1. *EMBO J.* 24, 4166–4175. doi: 10.1038/sj.emboj.7600877
- Moreau, C., Gally, F., Jacquet-Bouix, H., and Vivaudou, M. (2005a). The size of a single residue of the sulfonylurea receptor dictates the effectiveness of K ATP channel openers. *Mol. Pharmacol.* 67, 1026–1033. doi: 10.1124/mol.104.008698
- Moreau, C., Prost, A. L., Dérand, R., and Vivaudou, M. (2005b). SUR, ABC proteins targeted by K_{ATP} channel openers. *J. Mol. Cell. Cardiol.* 38, 951–963. doi: 10.1016/j.yjmcc.2004.11.030
- Moreau, C., Jacquet, H., Prost, A. L., D'hahan, N., and Vivaudou, M. (2000). The molecular basis of the specificity of action of K_{ATP} channel openers. *EMBO J.* 19, 6644–6651. doi: 10.1093/emboj/19.24.6644
- Moreau, C. J., Dupuis, J. P., Revilloud, J., Arumugam, K., and Vivaudou, M. (2008). Coupling ion channels to receptors for biomolecule sensing. *Nat. Nanotechnol.* 3, 620–625. doi: 10.1038/nnano.2008.242
- Nichols, C. G. (2006). K_{ATP} channels as molecular sensors of cellular metabolism. *Nature* 440, 470–476. doi: 10.1038/nature04711
- Niescierowicz, K., Caro, L., Cherezov, V., Vivaudou, M., and Moreau, C. J. (2014). Functional assay for T4 lysozyme-engineered G protein-coupled receptors with an ion channel reporter. *Structure* 22, 149–155. doi: 10.1016/j.str.2013.10.002
- Olson, T. M., Alekseev, A. E., Moreau, C., Liu, X. K., Zingman, L. V., Miki, T., et al. (2007). K_{ATP} channel mutation confers risk for vein of Marshall adrenergic atrial fibrillation. *Nat. Clin. Pract. Cardiovasc. Med.* 4, 110–116. doi: 10.1038/ncpcardio0792
- Proks, P., de Wet, H., and Ashcroft, F. M. (2010). Activation of the K_{ATP} channel by Mg-nucleotide interaction with SUR1. *J. Gen. Physiol.* 136, 389–405. doi: 10.1085/jgp.201010475
- Shyng, S. L., Ferrigni, T., Shepard, J. B., Nestorowicz, A., Glaser, B., Permutt, M. A., et al. (1998). Functional analyses of novel mutations in the sulfonylurea receptor 1 associated with persistent hyperinsulinemic hypoglycemia of infancy. *Diabetes* 47, 1145–1151. doi: 10.2337/diabetes.47.7.1145
- Thornton, P. S., MacMullen, C., Ganguly, A., Ruchelli, E., Steinkrauss, L., Crane, A., et al. (2003). Clinical and molecular characterization of a dominant form of congenital hyperinsulinism caused by a mutation in the high-affinity sulfonylurea receptor. *Diabetes* 52, 2403–2410. doi: 10.2337/diabetes.52.9.2403
- Ueda, K., Inagaki, N., and Seino, S. (1997). $MgADP$ antagonism to Mg^{2+} -independent ATP binding of the sulfonylurea receptor SUR1. *J. Biol. Chem.* 272, 22983–22986. doi: 10.1074/jbc.272.37.22983
- Ulens, C., and Siegelbaum, S. A. (2003). Regulation of hyperpolarization-activated HCN channels by cAMP through a gating switch in binding domain symmetry. *Neuron* 40, 959–970. doi: 10.1016/S0896-6273(03)00753-0
- Vila-Carriles, W. H., Zhao, G., and Bryan, J. (2007). Defining a binding pocket for sulfonylureas in ATP-sensitive potassium channels. *FASEB J.* 21, 18–25. doi: 10.1096/fj.06-6730hyp

- Wheeler, A., Wang, C., Yang, K., Fang, K., Davis, K., Styer, A. M., et al. (2008). Coassembly of different sulfonylurea receptor subtypes extends the phenotypic diversity of ATP-sensitive potassium (K_{ATP}) channels. *Mol. Pharmacol.* 74, 1333–1344. doi: 10.1124/mol.108.048355
- Yang, Y., Liu, Y., Dong, Z., Xu, J., Peng, H., Liu, Z., et al. (2007). Regulation of function by dimerization through the amino-terminal membrane-spanning domain of human ABCC1/MRP1. *J. Biol. Chem.* 282, 8821–8830. doi: 10.1074/jbc.M700152200
- Zerangue, N., Schwappach, B., Jan, Y. N., and Jan, L. Y. (1999). A new ER trafficking signal regulates the subunit stoichiometry of plasma membrane K_{ATP} channels. *Neuron* 22, 537–548. doi: 10.1016/S0896-6273(00)80708-4
- Zingman, L. V., Hodgson, D. M., Bienengraeber, M., Karger, A. B., Kathmann, E. C., Alekseev, A. E., et al. (2002). Tandem function of nucleotide binding domains confers competence to sulfonylurea receptor in gating ATP-sensitive K^+ channels. *J. Biol. Chem.* 277, 14206–14210. doi: 10.1074/jbc.M109452200
- Conflict of Interest Statement:** The authors declare that the research was conducted in the absence of any commercial or financial relationships that could be construed as a potential conflict of interest.
- Received: 03 December 2013; paper pending published: 21 December 2013; accepted: 07 January 2014; published online: 28 January 2014.
- Citation: Hosy E and Vivaudou M (2014) The unusual stoichiometry of ADP activation of the K_{ATP} channel. *Front. Physiol.* 5:11. doi: 10.3389/fphys.2014.00011
- This article was submitted to *Membrane Physiology and Membrane Biophysics*, a section of the journal *Frontiers in Physiology*.
- Copyright © 2014 Hosy and Vivaudou. This is an open-access article distributed under the terms of the Creative Commons Attribution License (CC BY). The use, distribution or reproduction in other forums is permitted, provided the original author(s) or licensor are credited and that the original publication in this journal is cited, in accordance with accepted academic practice. No use, distribution or reproduction is permitted which does not comply with these terms.