

Photoinhibition-Like Damage to the Photosynthetic Apparatus in Plant Leaves Induced by Submergence Treatment in the Dark

Xingli Fan¹✉, Zishan Zhang¹✉, Huiyuan Gao^{1*}, Cheng Yang¹, Meijun Liu¹, Yuting Li¹, Pengmin Li²

1 State Key Lab of Crop Biology, College of Life Sciences, Shandong Agricultural University, Tai'an, Shandong, China, **2** State Key Laboratory of Crop Stress Biology for Arid Areas, College of Horticulture, Northwest A&F University, Yangling, Shanxi, China

Abstract

Submergence is a common type of environmental stress for plants. It hampers survival and decreases crop yield, mainly by inhibiting plant photosynthesis. The inhibition of photosynthesis and photochemical efficiency by submergence is primarily due to leaf senescence and excess excitation energy, caused by signals from hypoxic roots and inhibition of gas exchange, respectively. However, the influence of mere leaf-submergence on the photosynthetic apparatus is currently unknown. Therefore, we studied the photosynthetic apparatus in detached leaves from four plant species under dark-submergence treatment (DST), without influence from roots and light. Results showed that the donor and acceptor sides, the reaction center of photosystem II (PSII) and photosystem I (PSI) in leaves were significantly damaged after 36 h of DST. This is a photoinhibition-like phenomenon similar to the photoinhibition induced by high light, as further indicated by the degradation of PsaA and D1, the core proteins of PSI and PSII. In contrast to previous research, the chlorophyll content remained unchanged and the H₂O₂ concentration did not increase in the leaves, implying that the damage to the photosynthetic apparatus was not caused by senescence or over-accumulation of reactive oxygen species (ROS). DST-induced damage to the photosynthetic apparatus was aggravated by increasing treatment temperature. This type of damage also occurred in the anaerobic environment (N₂) without water, and could be eliminated or restored by supplying air to the water during or after DST. Our results demonstrate that DST-induced damage was caused by the hypoxic environment. The mechanism by which DST induces the photoinhibition-like damage is discussed below.

Citation: Fan X, Zhang Z, Gao H, Yang C, Liu M, et al. (2014) Photoinhibition-Like Damage to the Photosynthetic Apparatus in Plant Leaves Induced by Submergence Treatment in the Dark. PLoS ONE 9(2): e89067. doi:10.1371/journal.pone.0089067

Editor: Nikolai Lebedev, US Naval Research Laboratory, United States of America

Received: November 30, 2013; **Accepted:** January 13, 2014; **Published:** February 19, 2014

Copyright: © 2014 Fan et al. This is an open-access article distributed under the terms of the Creative Commons Attribution License, which permits unrestricted use, distribution, and reproduction in any medium, provided the original author and source are credited.

Funding: This work was supported by the National Natural Science Foundation of China (No. 31370276), the Specialized Research Foundation for the Doctoral Program of Higher Education of China (No. 20113702110008) and the Research Foundation of the State Key Laboratory of Crop Plant Biology in Shandong Agricultural University (No. 2011KF03). The funders had no role in study design, data collection and analysis, decision to publish, or preparation of the manuscript.

Competing Interests: The authors have declared that no competing interests exist.

* E-mail: gaohy@sdau.edu.cn

✉ These authors contributed equally to this work.

Introduction

Submergence is one of the common environmental challenges for plants in natural ecosystems [1,2]. It hampers growth and survival of plants and causes a significant decrease in crop yield, mainly by inhibiting plant photosynthesis [1,4–6].

Most previous studies show that the photosynthesis rate and photochemical efficiency decrease in the leaves of submerged plants [3,7,8]. The decline in activity of the photosynthetic apparatus is induced, firstly, by the inhibition of root respiration by low O₂ levels in submerged soil, which decreases the absorptive capacity for water and nutrients [1,9,10]. Secondly, signals such as abscisic acid (ABA) and ethylene from the hypoxic roots lead to stomatal closure and leaf senescence, thereby inhibiting photosynthesis and causing photoinhibition [7,11,12]. Thirdly, the low CO₂ concentration in water inhibits photosynthetic carbon assimilation, triggering excess excitation energy [13–15].

Signals from hypoxic roots and light-induced excess excitation energy are harmful to the photosynthetic apparatus. However, it is unclear whether mere leaf submergence affects

photosynthetic activity without the influence of the factors mentioned above.

To address this question, we explored the function of the photosynthetic apparatus in detached leaves submerged in the dark (dark-submergence treatment, DST), which is a method of avoiding the influence of excess excitation energy and signals from the roots to the photosynthetic apparatus.

Materials and Methods

Plant Materials

The leaves used in this study were detached from four plant species, grown on an experimental plot of land owned by our University. No specific permissions were required for using plant materials from our experimental land. Our field studies did not involve endangered or protected species. The specific coordinates of the area are 36 degrees north and 117 degrees east.

We used the youngest fully expanded leaves of four plant species: daylily (*Hemerocallis fulva*), willow (*Salix babylonica*), euonymus japonicus (*Buxus megistophylla Lévl*) and maize (*Zea mays*

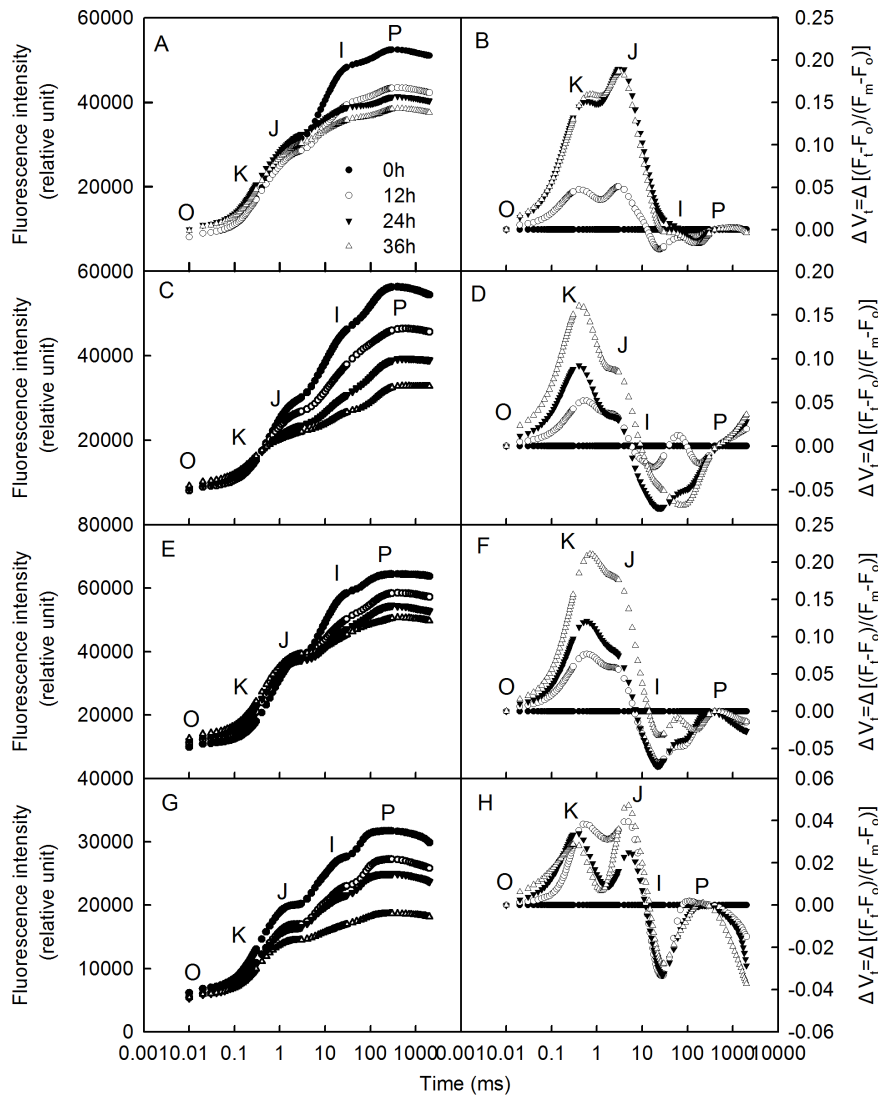


Figure 1. Chlorophyll a fluorescence transients and ΔV_t curves in leaves during dark-submergence treatment. Chlorophyll a fluorescence transients (A, C, E, G) and ΔV_t curves (B, D, F, H). A, B=daylily; C, D=willow; E, F=euonymus japonicus; G, H=maize. V_t is the standardization from the O to P step $V_t = (F_t - F_o)/(F_m - F_o)$. ΔV_t was obtained by subtracting the kinetics of leaf segments before from those after treatment. Each transient is the mean of eight replicates. doi:10.1371/journal.pone.0089067.g001

L.). The leaves were detached before sunrise from plants naturally grown in the field and taken to the laboratory wrapped in damp cloths as soon as they were detached.

Dark-submergence Treatment

Leaves were wrapped in a damp cloth and placed in a completely dark environment (control, CK) or fully submerged into deionized water in the dark (dark-submergence treatment, DST) at different temperatures (15°C, 25°C, and 35°C). The temperature was controlled by a GXZ incubator (Ningbo, China). Parameters such as F_v/F_m , Ψ_o , ABS/CSm and Activity of PSI complex were measured after 0 h, 12 h, 24 h and 36 h of treatment.

To elucidate the influence of O_2 on the photochemical activity of leaves during submergence, air was continually pumped into the water at a $0.17\sim 0.2\text{ m}^3\cdot\text{s}^{-1}$ flow rate during DST (DST+Air). To explore the recovery of the photochemical activity of leaves after

DST, with or without O_2 , air or N_2 at a $0.17\sim 0.2\text{ m}^3\cdot\text{s}^{-1}$ flow rate was pumped into the water for 36 h after 36 h of DST. To exclude the physical influence of water, the detached leaf segments wrapped in damp cloths were placed in the air (CK) or N_2 environment.

Measurements of Chlorophyll a Fluorescence Transient and Reflection of 820 nm Modulated Light

The chlorophyll a fluorescence transient and the reflection of 820 nm modulated light changes were simultaneously measured using an m-PEA (Hansatech, UK). The saturating red light of $5000\text{ }\mu\text{mol m}^{-2}\text{ s}^{-1}$ was produced by an array of four light-emitting diodes (LED, peak 650 nm). All the measurements were performed with dark-adapted leaf at room temperature. The chlorophyll a fluorescence transients were obtained by 2 s saturating red light and analyzed with the JIP-test [16]. The description and calculation of

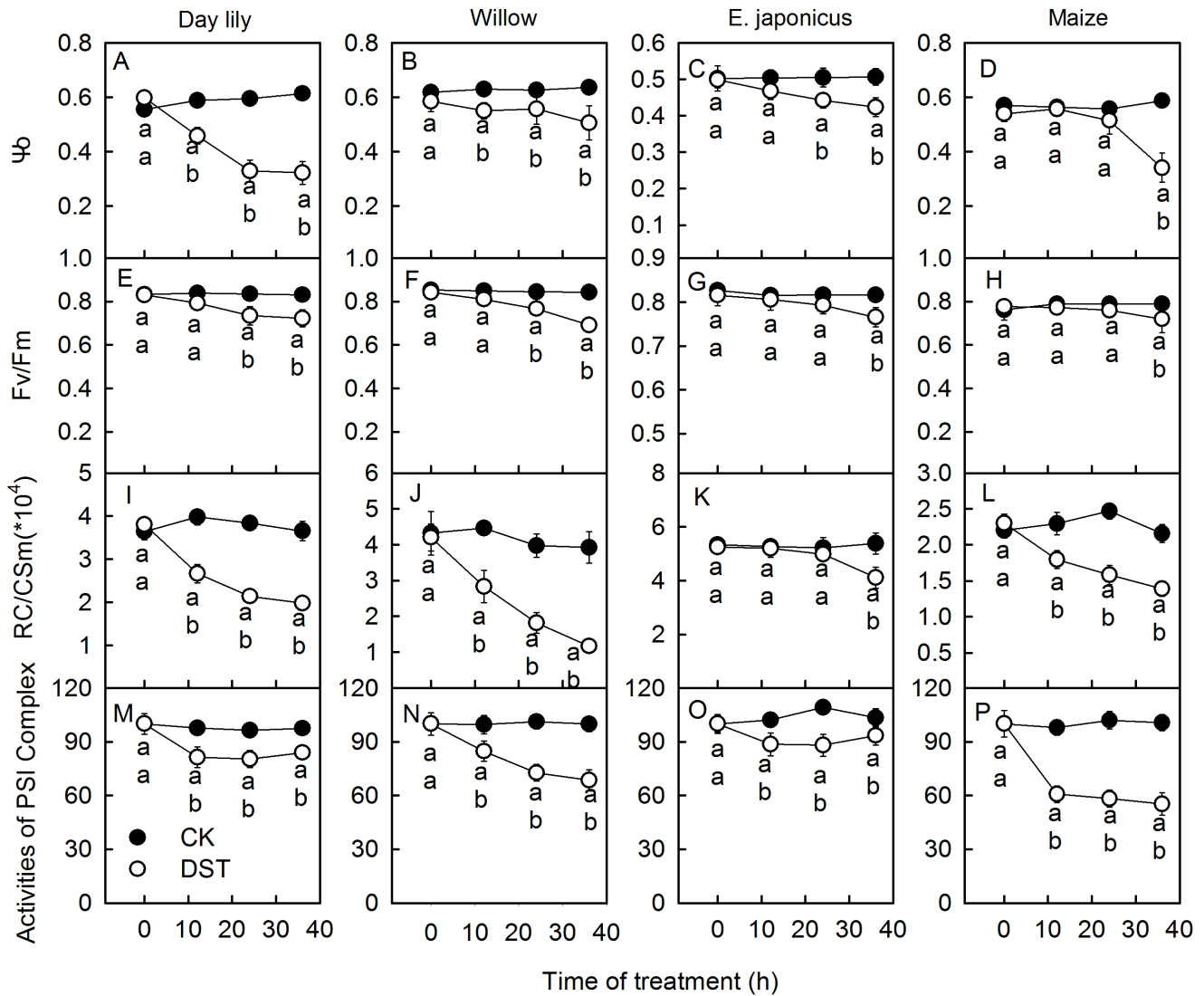


Figure 2. PSII and PSI activity in leaves during dark-submergence treatment. The efficiency of electron moves beyond Q_A^- (Ψ_o), maximum quantum yield of PSII (Fv/Fm), density of Q_A^- -reducing PSII reaction centers per cross section (RC/CSm) and activity of PSI complex in daylily (A, E, I, M), willow (B, F, G, H), euonymus (E.) japonicus (C, G, K, O) and maize (D, H, L, P) leaves during dark-submergence treatment (DST) were obtained by the JIP-test and the analysis of 820 nm light reflection. Means \pm SE of eight replicates are presented. Different letters indicate significant differences between the treatments, $P < 0.05$. Differences were analyzed by least significant difference (LSD). doi:10.1371/journal.pone.0089067.g002

standardization formula of OJIP transients and formula of parameters were listed below.

- (1) $V_t = (F_t - F_o) / (F_m - F_o), \Delta V_t = \Delta[(F_t - F_o) / (F_m - F_o)]$
- (2) Maximum quantum yield of PSII, $F_v/F_m = 1 - (F_o/F_m)$
- (3) Efficiency of electron moves beyond Q_A^- , $\Psi_o = 1 - V_j$
- (4) The density of Q_A^- -reducing PSII reaction centers per cross section,

$$RC/CSm = \Phi P_o \cdot (V_j/M_o) \cdot (ABS/CSm)$$

- (5) The normalized relative variable fluorescence at the K step (W_K), $W_K = (F_K - F_o) / (F_j - F_o)$

The modulated measuring light (820 nm) was provided by an m-PEA. Irradiated with a saturating red light ($5000 \mu\text{mol m}^{-2} \text{s}^{-1}$ PFD), the reflection at 820 nm in leaves decreases gradually, which is mainly caused by the initial oxidation of P700 (the primary electron donor in PSI) and plastocyanin (PC) [17]. The initial slope of the reflection at 820 nm light namely the activity of PSI complex was used to reflect the PSI activity [18,19].

Measurement of the Oxygen Evolution Rate

An OXYTHERM oxygen electrode (Hansatech, UK) was used to measure the O_2 evolution rate of leaves in 50 mM NaHCO_3 solution (dissolved in 50 mM Tris-HCl buffer, pH 7.5) at 25°C. A photosynthetic saturation light ($1600 \mu\text{mol m}^{-2} \text{s}^{-1}$) was used in the measurements.

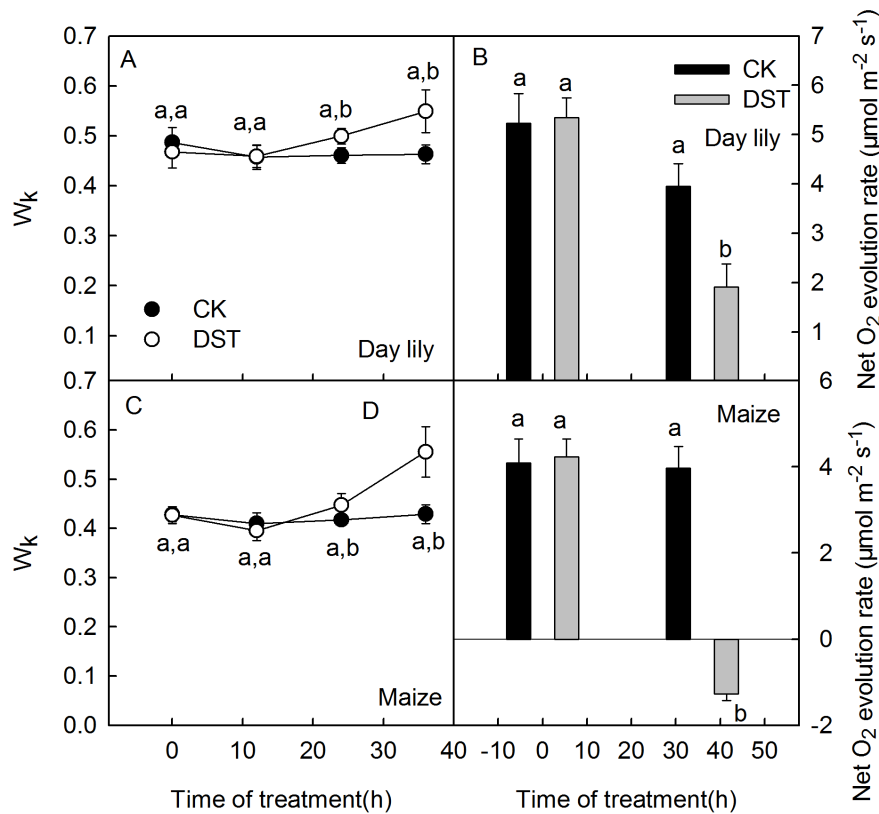


Figure 3. W_k and net O_2 evolution rate in leaves during dark-submergence treatment. The relatively variable fluorescence at the K step (W_k) and net O_2 evolution rate in the daylily (A, B) and maize (C, D) leaves during dark-submergence treatment (DST). Means \pm SE of eight replicates are presented. Different letters indicate significant differences between the treatments, $P < 0.05$. Differences were analyzed by least significant difference (LSD).

doi:10.1371/journal.pone.0089067.g003

Detection of D1 and PsaA Protein

The protein was detected with thylakoid membranes of the treated leaves by Western Blot. For thylakoid membranes preparation, leaf fragments were homogenized in an ice-cold isolation buffer (100 mM sucrose, 50 mM HEPES, pH 7.8, 20 mM NaCl, 2 mM EDTA, and 2 mM $MgCl_2$) and then filtered through three layers of pledget. The filtrate was centrifuged at 3000 g for 10 min. The sediments were washed with isolation buffer, re-centrifuged, and then finally suspended in an isolation buffer. The thylakoid membrane proteins were then denatured and separated using 12% polyacrylamide gradient gel. The denatured protein complexes in the gel were then electro-blotted to PVDF membranes, probed with D1 or PsaA antibody, and then visualized by the enhanced chemiluminescence method. The quantitative image analysis of protein levels was performed with Gel-Pro Analyzer 4.0 software.

High Light Treatment

In high light treatment, leaves were illuminated under $1000 \mu\text{mol m}^{-2} \text{s}^{-1}$ light provided by red and blue (8:1) light emitting diode light source (LED; Senpro, China).

Measurement of the Chlorophyll Content

Leaf chlorophyll was extracted with 80% acetone in the dark for 72 h at 4°C . The extracts were analyzed using an UV-visible

spectrophotometer UV-1601 (Shimadzu, Japan) according to the method of Porra [20].

Measurement of the Hydrogen Peroxide Content

Tissue hydrogen peroxide content was estimated according to Brennan and Frenkel [21]. H_2O_2 content was calculated from a standard curve prepared by using different concentrations of H_2O_2 solutions ($75\text{--}750 \text{ nmol mL}^{-1}$ working solutions prepared from a 1 mM stock solution).

Measurements of the O_2 Concentration of the Water

The O_2 concentration of the water during the dark-submergence treatment was measured by OXYTHERM oxygen electrode (Hansatech, UK) at 25°C which was automatically controlled by OXYTHERM. Two mL water was added to reaction vessel, the O_2 concentration (nmol mL^{-1}) was recorded after the signal of O_2 reaches a steady state.

Statistical Analysis

Calculations of standard error (SE) were carried out with Microsoft Excel software. Least significant difference (LSD) was used to analyze differences between the different treatments by using SPSS 16.

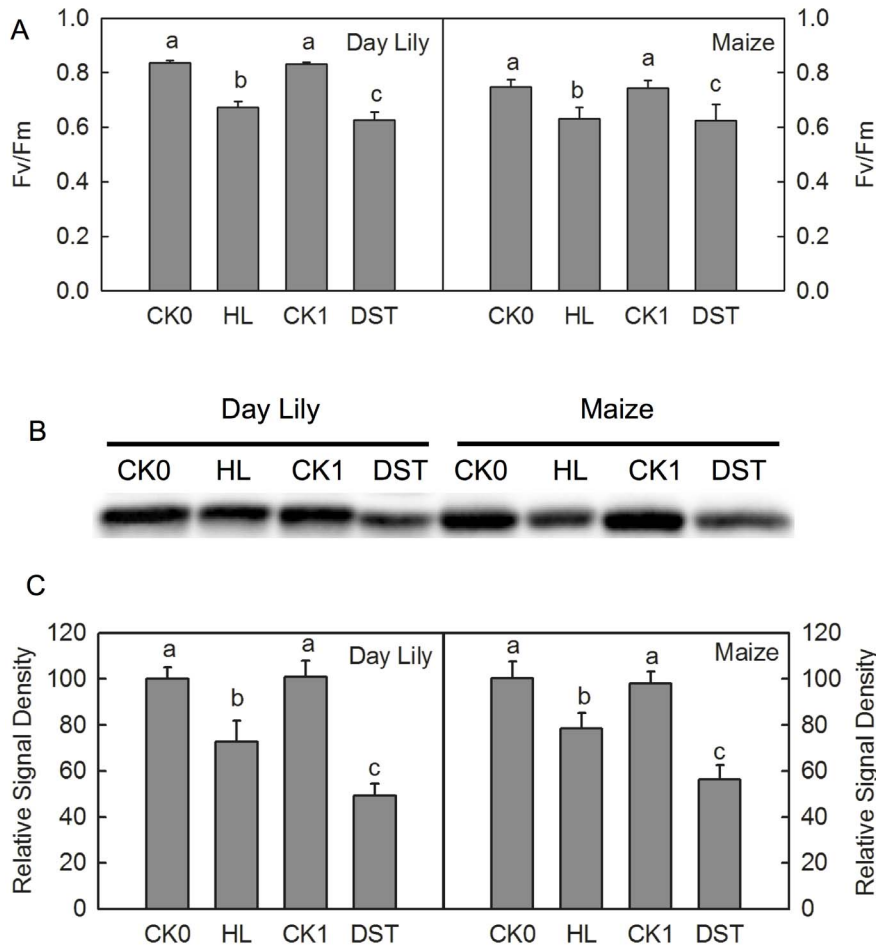


Figure 4. Photochemical efficiency and D1 protein levels in leaves after high-light and dark-submergence treatment. Photochemical efficiency (Fv/Fm) and D1 protein levels in daylily and maize leaves after high light (HL) and dark-submergence treatment (DST). (A) Changes of photochemical efficiency of daylily and maize leaves. CK0, the control leaves placed in the humid-dark air for 3 h; HL, leaves after high-light ($1000 \mu\text{mol m}^{-2} \text{s}^{-1}$) treatment for 3 h; CK1, the control leaves placed in the humid-dark air for 36 h; DST, leaves after DST for 36 h. Means \pm SE of eight replicates are presented. Different letters indicate significant differences between different treatments, $P < 0.05$. Differences were analyzed by LSD (least significant difference). (B) Changes in D1 protein levels after high light (HL) and dark-submergence treatment (DST). (C) Quantitative image analysis of protein levels for Fig. 9B. Means \pm SE of three replicates are presented. Different letters indicate significant differences between the treatments, $P < 0.05$. Differences were analyzed by least significant difference (LSD). doi:10.1371/journal.pone.0089067.g004

Results

Changes in the Photoactivities of Photosystem I and Photosystem II during Dark-submergence Treatment

Chlorophyll a fluorescence transients (OJIP) containing abundant information about the primary photochemical reactions of PSII, have been widely used in PSII activity studies [22,23]. The appearance of the peak at J step (at 2 ms) and the decrease in efficiency of electron moves beyond Q_A^- (Ψ_0) indicate that the PSII acceptor side is inhibited. More specifically, the electron moves beyond Q_A^- is limited [24,25,26]. The J step (at 2 ms) in ΔV_t curves increased (Fig. 1) and the Ψ_0 decreased significantly after DST in all four plant species (Fig. 2), which indicates that the acceptor side activity was inhibited during DST.

Increases in K steps (at 300 μs) in ΔV_t curves and W_K are widely used as specific indicators of injury to the donor side of PSII [24,27,28]. To further investigate the activities of PSI and PSII during DST, we measured the net O_2 evolution rate

and analyzed the levels of the PSI and PSII core proteins, D1 and PsaA, using two representative plant leaves (daylily (C3) and maize (C4)). The K step of the OJIP transients increased after 36 h of DST (Fig. 1), and W_K changed similarly to the K step (Fig. 3A, C). In addition, the net O_2 evolution rate also decreased after DST (Fig. 3B, D). These results indicate that the donor side activity of PSII was inhibited during DST.

The maximum quantum yield of PSII (Fv/Fm) (Fig. 2) and the density of Q_A^- -reducing PSII reaction centers per cross section (RC/CSm) (Fig. 2) in the leaves of different species dramatically decreased during DST. This indicates that the reaction centers in the leaves were damaged during DST.

The decrease of Fv/Fm, RC/CSm and Ψ_0 are conventional indicators of photoinhibition induced by high light [29,30,31]. However, the damage occurred in leaves without light, and is therefore referred to as a “photoinhibition-like phenomenon”.

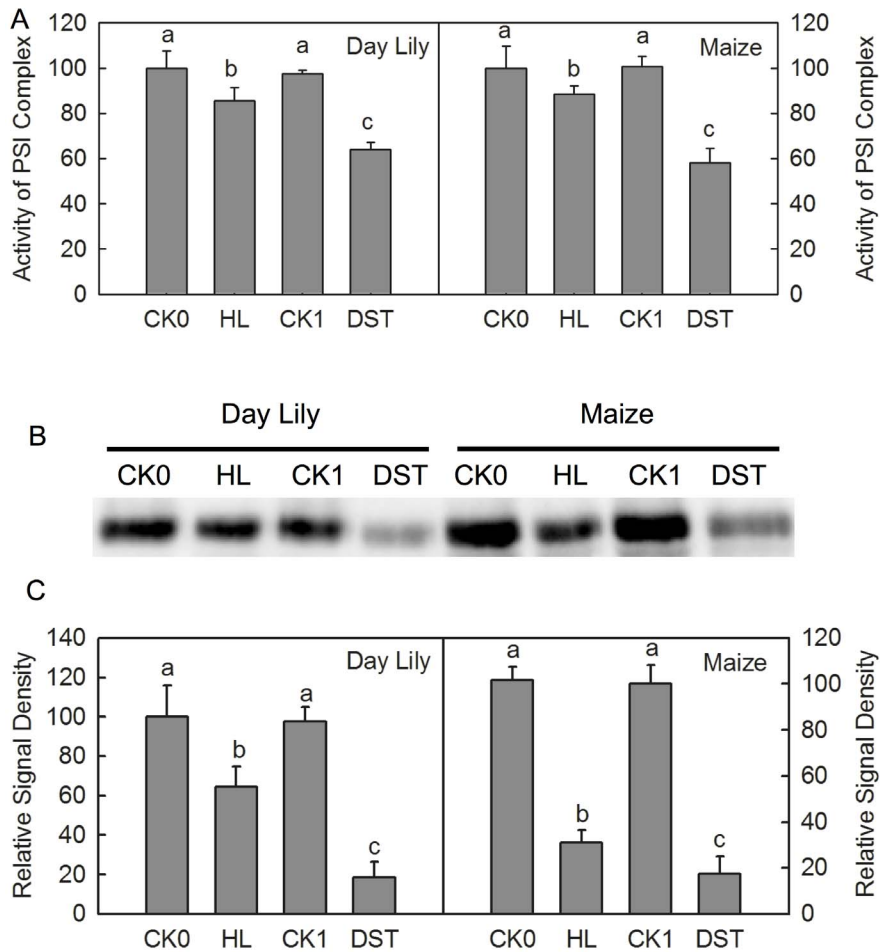


Figure 5. PSI activity and PsaA protein levels in leaves after high light and dark-submergence treatment. PSI activity (Activity of PSI Complex) and PsaA protein levels in daylily and maize leaves after high light (HL) and dark-submergence treatment (DST). (A) Changes of photochemical efficiency in daylily and maize leaves. CK0, the control leaves placed in the humid-dark air for 3 h; HL, leaves after high light ($1000 \mu\text{mol m}^{-2} \text{s}^{-1}$) treatment for 3 h; CK1, the control leaves placed in the humid-dark air for 36 h; DST, leaves after DST for 36 h. Means \pm SE of eight replicates are presented. Different letters indicate significant differences between treatments, $P < 0.05$. The differences were analyzed by least significant difference (LSD). (B) Changes of the D1 protein content after high light (HL) and dark-submergence treatment (DST). (C) Quantitative image analysis of protein levels for Fig. 10B. Means \pm SE of three replicates are presented. Different letters indicate significant differences between the treatments, $P < 0.05$. Differences were analyzed by least significant difference (LSD). doi:10.1371/journal.pone.0089067.g005

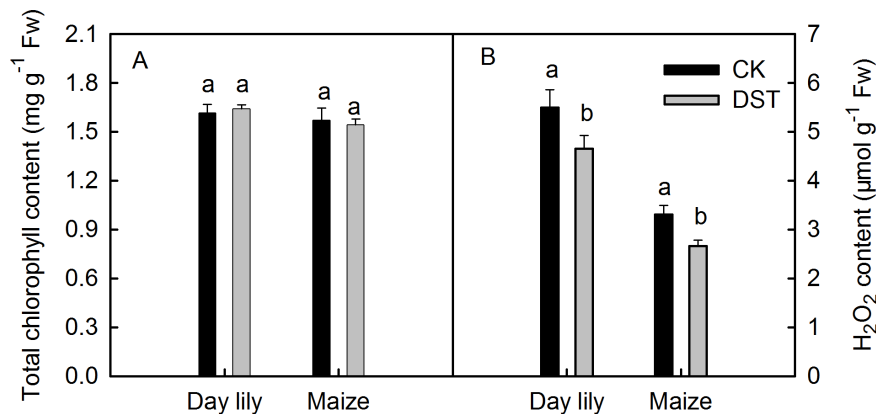


Figure 6. Total chlorophyll and H_2O_2 content in leaves before and after dark-submergence treatment. Total chlorophyll (A) and H_2O_2 (B) in daylily and maize leaves before and after 36 h of DST. Means \pm SE of eight replicates are presented. Different letters indicate significant differences between the different times, $P < 0.05$. Differences were analyzed by least significant difference (LSD). doi:10.1371/journal.pone.0089067.g006

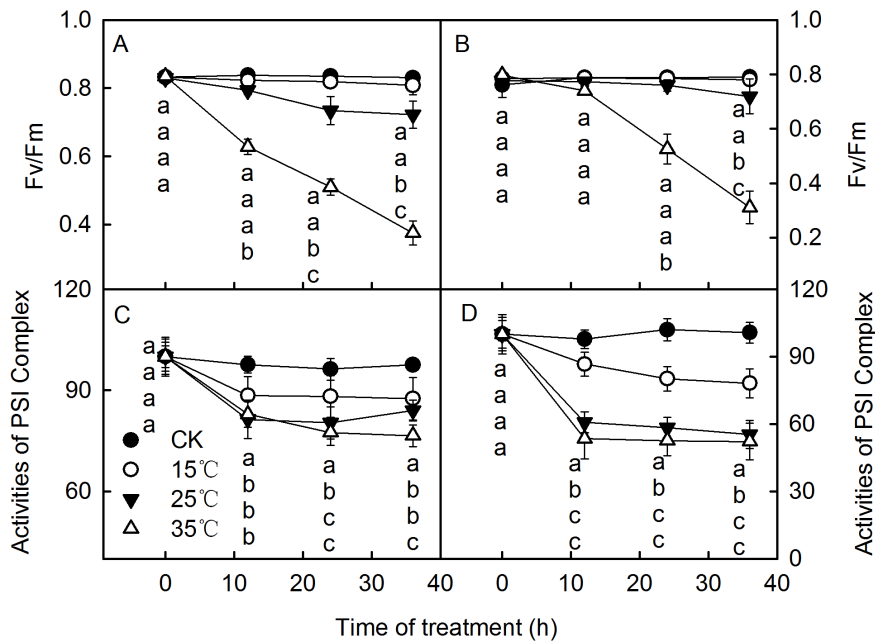


Figure 7. PSII and PSI activity in leaves during dark-submergence treatment at different temperatures. The maximum quantum yield of PSII (Fv/Fm) and activity of PSI complex in leaves of daylily (A, C), and maize (B, D) during dark-submergence treatment (DST) at various temperatures (15°C, 25°C, and 35°C). Means \pm SE of eight replicates are presented. Different letters indicate significant differences between the treatments, $P < 0.05$. Differences were analyzed by least significant difference (LSD). doi:10.1371/journal.pone.0089067.g007

The high-light-induced photoinhibition is mainly due to the net degradation of the D1 protein [29]. To investigate whether the photoinhibition-like damage caused by DST also resulted from the degradation of the D1 protein, we performed a Western Blot analysis of thylakoid membrane preparations of leaves with both high light treatment and DST, with equal amounts of chlorophyll. The results showed that both treatments significantly decreased D1 levels (Fig. 4). This indicates that the D1 degradation was also involved in photoinhibition-like damage.

The activity of PSI complex decreased after 36 h of DST (Fig. 2), which indicates that the PSI activities of leaves were also inhibited during the DST. PSI photoinhibition is usually caused by the degradation of the core protein of PSI, PsaA [32,33]. Western Blot results showed that PsaA levels dramatically decreased after 36 h of DST (Fig. 5), which demonstrates that DST also damaged the PSI complex.

Changes of the Chlorophyll and H₂O₂ Levels during Dark-submergence Treatment

Most previous studies show that the submergence process is accompanied by leaf senescence [12,34]. The chlorophyll content, a typical indicator for leaf senescence [35,36], changed little in leaves of the different species after 36 h of DST (Fig. 6A), which indicates that the decrease of photochemical activity was not induced by leaf senescence.

It has been reported that completely submerged plants produce large amounts of reactive oxygen species (ROS) [37,38]. Our results showed that the H₂O₂ content in different leaves did not significantly increase after 36 h of DST. In contrast, it was lower than that in the control leaves (Fig. 6B), which indicates that the decline of photochemical

activity under DST was not due to the over-accumulation of ROS.

Changes in the Photochemical Activities of Photosystems in Leaves and O₂ Content in Water during the Dark-submergence Treatment at Different Temperatures

To further explore the mechanism of the photoinhibition-like damage induced by DST, we submerged leaves in the dark at different temperatures (15°C, 25°, and 35°C). The results showed that the decreases of both Fv/Fm and the activity of the PSI complex were aggravated with the increase of temperature during DST (Fig. 7). In addition, the O₂ concentrations in the water differed significantly at the various temperatures. The higher the temperature, the lower the O₂ concentration in water was (Fig. 8). The results above indicate that the photoinhibition-like damage was correlated with the O₂ concentration in the water. The lower O₂ level in the water, the severer damage to the photosynthetic apparatus induced by DST was.

Influence of Air and N₂ on the Photochemical Activity in Leaves during Dark-submergence Treatment

To investigate the influence of the O₂ concentration on leaf photochemical activity, leaves were studied under DST with air pumped into the water (DST+Air). As shown in Fig. 9, no significant changes were observed in Ψ_o and Fv/Fm between control leaves and leaves treated with DST+Air, which indicates that the decline of photochemical activities in leaves was effectively alleviated or eliminated by the O₂ supply during DST. In addition, the O₂ concentration changed little during DST+Air (Table 1). The results above confirm that the O₂ concentration in the water determined whether the

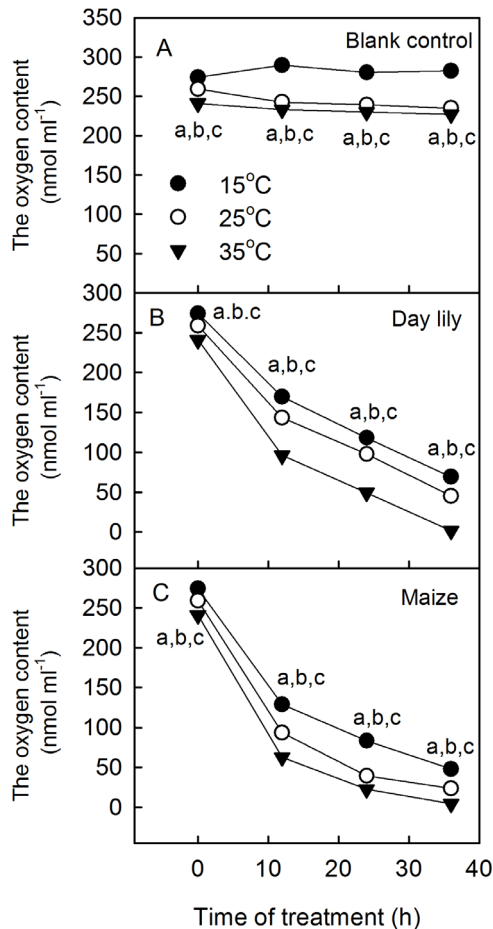


Figure 8. O₂ content in the water during dark-submergence treatment at different temperatures. The O₂ content in the water during DST at different temperatures (15°C, 25°C, and 35°C): blank control (A), daylily (B) and maize (C). Means \pm SE of three replicates are presented. Different letters indicate significant differences between the various temperatures, $P < 0.05$. Differences were analyzed by least significant difference (LSD). doi:10.1371/journal.pone.0089067.g008

photosynthetic apparatus of leaves would be damaged or remain intact during DST.

To exclude physical damage of water to the photosynthetic apparatus during DST, we studied the leaves in an artificial hypoxic environment (humid N₂ atmosphere). The results showed that both the Ψ_o and Fv/Fm in two plant species significantly decreased after a 36 h treatment under humid N₂, whereas they remained unchanged after a 36 h treatment with humid air (CK) (Fig. 9). These results further demonstrate that the hypoxic environment plays a crucial role in the damage of the photosynthetic apparatus during DST.

Influence of Air and N₂ Supply on the Recovery of Photochemical Activity in Leaves after 36 h of Dark-submergence Treatment

To further investigate the effect of O₂ on the photosynthetic apparatus after 36 h of DST, air or N₂ were pumped into the water, and the photochemical activity of leaves was analyzed after 36 h of DST. Results showed that both the Ψ_o and Fv/Fm recovered to 93.2%~100% of the

control after pumping air into the water after 36 h of DST (Fig. 10). However, both Ψ_o and Fv/Fm continuously declined after N₂ was pumped into the water (Fig. 10), which indicates that the damage to the photosynthetic apparatus was effectively recovered by supplying O₂ after DST. This result further demonstrates that the damage of the photosynthetic apparatus caused by DST is caused by the hypoxic condition of the water.

Discussion

Most previous studies show that signals from roots and a shortage of CO₂ in the water may induce leaf senescence and produce excess excitation energy, resulting in decline of the photosynthetic rate and photoinhibition in the leaves of submerged plants. However, in this study, we observed that the activity of the photosynthetic apparatus was inhibited during DST in detached leaves. This inhibition was independent of root signals and excess excitation energy.

DST significantly damaged the donor side of PSII, which was indicated by a significant increase of the K step in the OJIP transients (Fig. 1) and the relative variable fluorescence at the K step (W_K) (Fig. 3), the effective indicators of injury to the donor side of PSII [24,27,28]. The dramatic decline of the O₂ evolution capacity of DST leaves (Fig. 3) further demonstrates that the donor side of PSII was damaged during DST. DST also inhibited the acceptor side of PSII, which was shown by an increase of the J steps in the OJIP transients (Fig. 1) and a decline in the efficiency of electron moves beyond Q_A^- (Ψ_o) (Fig. 2). In addition, the reaction centers of PSII were remarkably damaged by DST, which was reflected by a decrease in the maximum quantum yield of PSII (Fv/Fm) and the density of Q_A -reducing PSII reaction centers per cross section (RC/C_{Sm}). The above results demonstrate that the activities of the donor and acceptor sides and reaction center were inhibited during DST. The decrease of Fv/Fm, RC/C_{Sm} and Ψ_o are conventional indicators of photoinhibition [29–31]. However, we observed similar damage to the photosynthetic apparatus without light in different plant species. Therefore, we refer to this DST-induced damage as “photoinhibition-like damage”.

The traditional light-induced photoinhibition is due to net degradation of D1 protein [29,30,39]. In this study, the decrease in Fv/Fm was accompanied by a significant increase in J steps in the OJIP transients (Fig. 1) and a decline in Ψ_o (Fig. 2) during DST, which indicates that the electron transport from Q_A to Q_B was inhibited by DST [24,26]. D1 is a core protein of the PSII reaction center, which is associated with Q_B . The inhibition of electron transport from Q_A to Q_B may consequently be related to the degradation of the D1 protein. Through Western Blot analysis, we observed that D1 was significantly degraded by DST (Fig. 4). This confirmed that photoinhibition-like damage by DST was partly caused by the degradation of D1.

The PSI activity was also inhibited during DST, as illustrated by the significant decrease in activity of the PSI complex (Fig. 2). The finding that levels of PSI core protein PsaA significantly decreased during DST (Fig. 5) further supported this conclusion.

Some previous studies showed that, during submergence of a whole plant, roots under hypoxic conditions may produce signal substances [12,34]. This includes ethylene, which is transported to shoots leading to leaf senescence, characterized by chlorophyll degradation [35,36]. It has been reported that ROS are over-accumulated in submerged plants [37].

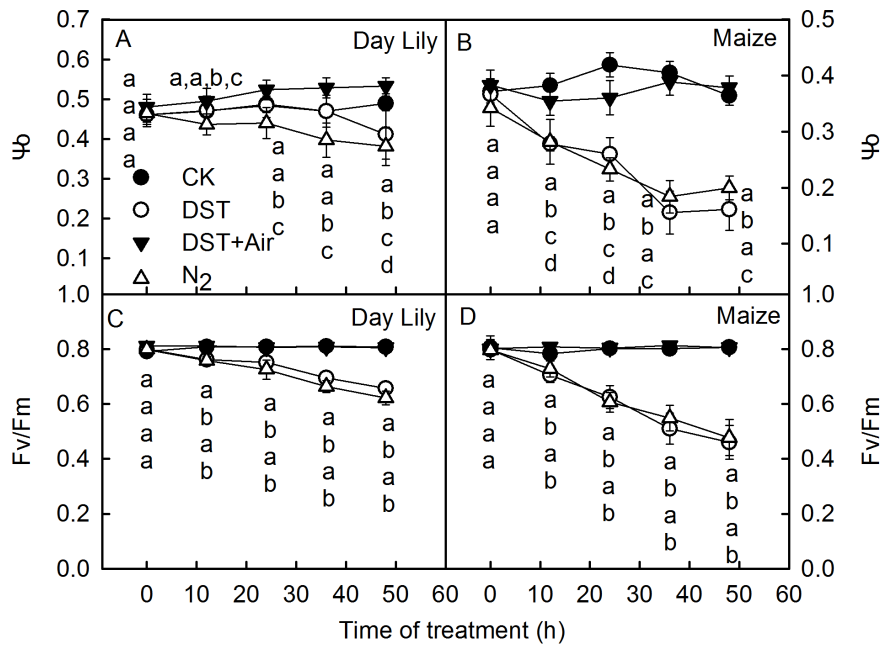


Figure 9. The effect of O₂ on PSII activity in leaves during dark-submergence treatment. Changes in the efficiency of electron moves beyond Q_A⁻ (Ψ_o, A and B) and photochemical efficiency (Fv/Fm, C and D) in daylily (A, C) and maize (B, D) leaves during dark-submergence treatment (DST) or simultaneously pumping air into the water (DST+Air), wrapped in damp cloths and placed in the normal atmosphere (CK) or N₂ (N₂). Means ± SE of eight replicates are presented. Different letters indicate significant differences between the treatments, P<0.05. Differences were analyzed by least significant difference (LSD).
doi:10.1371/journal.pone.0089067.g009

During submergence in the light, more photosynthetic electrons will be transported to O₂ to produce ROS [37,38], due to the over-reduction of the PSI acceptor side. However, in this study, we observed no significant decrease in chlorophyll content in leaves during DST (Fig. 6A), which indicates that the associated damage to the photosynthetic apparatus was not caused by leaf senescence. No significant increase in H₂O₂ was observed in leaves after DST (Fig. 6B), indicating that the photoinhibition-like damage was not caused by the over-accumulation of ROS.

DST resulted in hypoxia, since the O₂ concentration in water decreased to 15.7~20% after 36 h (Table. 1). Hypoxia might be a cause of the photoinhibition-like damage. However, it is unclear whether a hypoxic environment can damage the photosynthetic apparatus in the dark. To clarify the role of hypoxia on the photosynthetic apparatus damage of plant

leaves, we analyzed the photochemical activity of leaves under DST at different O₂ concentrations. This confirmed that the hypoxic environment caused the photoinhibition-like damage in leaves under DST. This was supported by the following results: 1) Supplying air to the water almost completely eliminated the damage (Fig. 9). 2) When the damage occurred in leaves under DST, photochemical activities of leaves almost completely recovered when air was supplied to the water (Fig. 10). 3) Placing leaves in a humid N₂ condition in the dark caused a similar decline of photochemical activity, as did DST (Fig. 9). 4) The damage to the photosynthetic apparatus in leaves was aggravated with increasing temperatures (15°C, 25°C, and 35°C) (Fig. 7), which enhanced O₂ consumption by higher respiration of leaves (Fig. 8).

The hypoxic environment decreased the photosynthetic activity of leaves in the dark, which might be caused by anaerobic respiration products such as ethanol to the photosynthetic apparatus. In addition, the decline of the ATP supply during anaerobic respiration may limit the synthesis of proteins relevant to the photosynthetic apparatus, such as D1 and PsA. This is supported by the finding that D1 and PsA levels significantly decreased during DST (Fig. 5).

In conclusion, DST caused photoinhibition-like damage to the photosynthetic apparatus, independent of light and root signals. The photoinhibition-like damage was caused by the hypoxic environment during DST, which inhibited the synthesis of core proteins of the photosynthetic apparatus, such as D1 and PsA. Further studies are needed to explore the detailed mechanism by which the hypoxic environment damages the photosynthetic apparatus.

Table 1. O₂ concentration in water before and after different treatments.

The O ₂ content in water (nmol ml ⁻¹)	Day lily	Maize
Before treatment	245.0±0.58 ^a	245.0±0.5 ^a
After 36 h of DST	49.1±0.71 ^b	38.5±1.29 ^b
After 36 h of DST+Air	243.0±0.15 ^a	225.7±1.00 ^a

Changes in the O₂ concentration of the water before and after pumping air in during dark-submergence treatment (DST). Means ± SE of three replicates are presented. Different letters indicate significant differences between treatments, P<0.05. Differences were analyzed by least significant difference (LSD).
doi:10.1371/journal.pone.0089067.t001

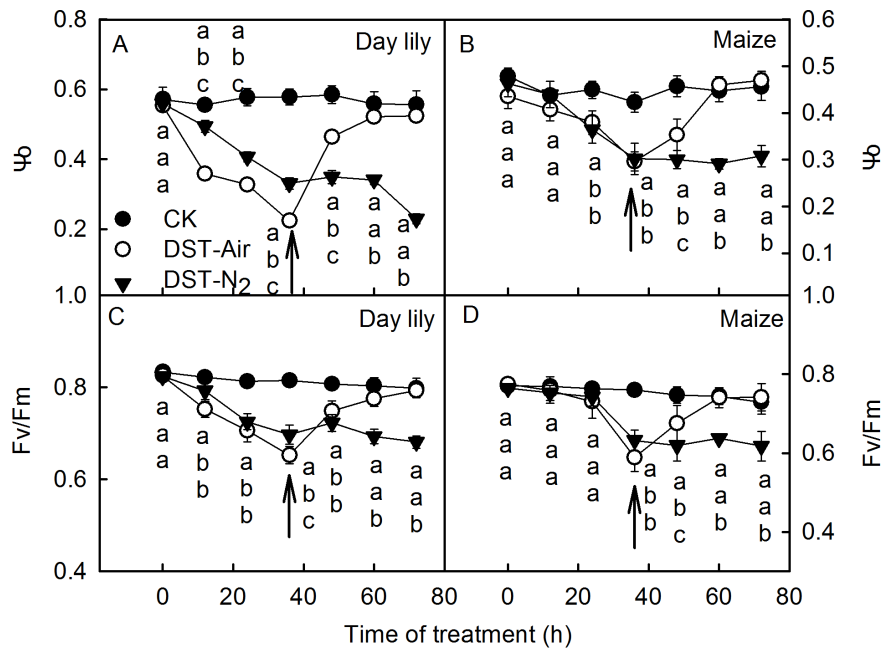


Figure 10. The effect of O₂ on PSII activity in leaves after dark-submergence treatment. Efficiency of electron moves beyond Q_A⁻ (Ψ_o , A and B) and photochemical efficiency (Fv/Fm, C and D) in leaves of the daylily (A, C) and maize (B, D) during dark-submergence treatment (DST) and with air (DST+Air) or N₂ (DST+N₂) pumped into the water after 36 h DST. Arrows indicate the time points at which gas was pumped into the water. Means \pm SE of eight replicates are presented. Different letters indicate significant differences between the treatments, P<0.05. Differences were analyzed by least significant difference (LSD). doi:10.1371/journal.pone.0089067.g010

Author Contributions

Conceived and designed the experiments: XF HG. Performed the experiments: XF ZZ. Analyzed the data: CY ML YL. Contributed reagents/materials/analysis tools: PL. Wrote the paper: XF ZZ HG.

References

- Kozłowski TT (1997) Responses of woody plants to flooding and salinity. Tree Physiology Monograph No.1: 1–29.
- Luo FL, Nagel KA, Zeng B, Schurr U, Matsubara S (2009) Photosynthetic acclimation is important for post-submergence recovery of photosynthesis and growth in two riparian species. *Annals of Botany* 104: 1435–1444.
- Voisenek LACJ, Colmer TD, Pierik R, Millenaar FF, Peeters AJM (2006) How plants cope with complete submergence. *New Phytologist* 170: 213–226.
- Gibbs J, Greenway H (2003) Mechanisms of anoxia tolerance in plants. I. Growth, survival and anaerobic catabolism. *Functional Plant Biology* 30: 1–47.
- Greenway H, Gibbs J (2003) Mechanisms of anoxia tolerance in plants. II. Energy requirements for maintenance and energy distribution to essential processes. *Functional Plant Biology* 30: 999–1036.
- Hossain AM, Uddin SN (2011) Mechanisms of waterlogging tolerance in wheat: Morphological and metabolic adaptations under hypoxia or anoxia. *Australian journal of crop science* 5: 1094–1101.
- Ahmed S, Nawata E, Hosokawa M, Domae Y, Sakuratani T (2002). Alterations in photosynthesis and some antioxidant enzymatic activities of mungbean subjected to waterlogging. *Plant Science* 163: 117–123.
- Arbona V, López-Clemente MF, Pérez-Clemente RM, Gómez-Cadenas A (2009). Maintenance of a high photosynthetic performance is linked to flooding tolerance in citrus. *Environmental and Experimental Botany* 66: 135–142.
- DeLaune RD, Pezeshki SR (1991) Role of soil chemistry in vegetative ecology of wetlands. *Trends Soil Science* 1: 101–113.
- Pezeshki SR, Pardue JH, DeLaune RD (1996) Leaf gas exchange and growth of flood-tolerant and flood-sensitive tree species under low soil redox conditions. *Tree Physiology* 16: 453–458.
- Terazawa K, Maruyama Y, Morikawa Y (1992) Photosynthetic and stomatal responses of *Larix kaempferi* seedlings to short-term waterlogging. *Ecological Research* 7: 193–197.
- Else MA, Janowiak F, Atkinson CJ, Jackson MB (2009) Root signals and stomatal closure in relation to photosynthesis, chlorophyll a fluorescence and adventitious rooting of flooded tomato plants. *Annals of botany* 103: 313–323.
- Waldhoff D, Furch B, Junk WJ (2002) Fluorescence parameters, chlorophyll concentration, and anatomical features as indicators for flood adaptation of an abundant tree species in Central Amazonia: *Symmeria paniculata*. *Environmental and Experimental Botany* 48: 225–235.
- Parolin P, Waldhoff D, Zerm M (2010) Photochemical capacity after submersion in darkness: How Amazonian floodplain trees cope with extreme flooding. *Aquatic Botany* 93: 83–88.
- Hussner A, Hoelken HP, Jahns P (2010) Low light acclimated submerged freshwater plants show a pronounced sensitivity to increasing irradiances. *Aquatic Botany* 93: 17–24.
- Strasser BJ, Strasser RJ (1995) Measuring fast fluorescence transients to address environmental questions: the JIP test. In: Mathis P, editor. *Photosynthesis: from light to biosphere*. Dordrecht: Kluwer Academic Publishers: 977–980.
- Schansker G, Srivastava A, Govindjee Strasser RJ (2003) Characterization of the 820-nm transmission signal paralleling the chlorophyll a fluorescence rise (OJIP) in pea leaves. *Functional Plant Biology* 30: 785–796.
- Strasser RJ, Tsimilli-Michael M, Qiang S, Goltsev V (2010) Simultaneous in vivo recording of prompt and delayed fluorescence and 820-nm reflection changes during drying and after rehydration of the resurrection plant *Haberlea rhodopensis*. *Biochimica et Biophysica Acta* 1797: 1313–1326.
- Oukarroum A, Goltsev V, Strasser RJ (2013) Temperature effects on pea plants probed by simultaneous measurements of the kinetics of prompt fluorescence, delayed fluorescence and modulated 820 nm reflection. *PLoS one* 8, e59433.
- Porra RJ (2002) The chequered history of the development and use of simultaneous equations for the accurate determination of chlorophyll a and b. *Photosynthesis Research* 73: 149–156.
- Brennan T, Frenkel C (1977) Involvement of hydrogen peroxide in the regulation of senescence in pear. *Plant Physiology* 59: 411–416.
- Yusuf MA, Kumar D, Rajwanshi R, Strasser RJ, Tsimilli-Michael M, et al. (2010) Overexpression of γ -tocopherol methyl transferase gene in transgenic *Brassica juncea* plants alleviates abiotic stress: physiological and chlorophyll a fluorescence measurements. *Biochim Biophys Acta* 1797: 1428–1438.
- Mathur S, Allakhverdiev SI, Jajoo A (2010) Analysis of high temperature stress on the dynamics of antenna size and reducing side heterogeneity of Photosystem II in wheat leaves (*Triticum aestivum*). *Biochim Biophys Acta* 1807: 22–29.
- Strasser BJ (1997) Donor side capacity of Photosystem II probed by chlorophyll a fluorescence transients. *Photosynthesis Research* 52: 147–55.

25. Srivastava A, Jüttner F, Strasser RJ (1998) Action of the allelochemical, fischerellin A, on photosystem II. *Biochimica et Biophysica Acta* 1364: 326–336.
26. Haldimann P, Strasser RJ (1999) Effects of anaerobiosis as probed by the polyphasic chlorophyll a fluorescence rise kinetic in pea (*Pisum sativum L.*). *Photosynthesis Research* 62: 67–83.
27. Tóth SZ, Schansker G, Kissimon J, Kovács L, Garab G, et al. (2005) Biophysical studies of photosystemII-related recovery processes after a heat pulse in barley seedlings (*Hordeum vulgare L.*). *Journal of plant physiology* 162: 181–194.
28. Zhang ZS, Li G, Gao HY, Zhang LT, Yang C, et al. (2012) Characterization of photosynthetic performance during senescence in stay-green and quick-leaf-senescence *Zea mays L.* inbred lines. *PLoS one* 7, e42936.
29. Murata N, Takahashi S, Nishiyama Y, Allakhverdiev SI (2007) Photoinhibition of photosystem II under environmental stress. *Biochimica et Biophysica Acta* 1767: 414–421.
30. Takahashi S, Murata N (2008) How do environmental stresses accelerate photoinhibition? *Trends in Plant Science* 13: 178–182.
31. Goh CH, Ko SM, Koh S, Kim YJ, Bae HJ (2012) Photosynthesis and environments: photoinhibition and repair mechanisms in plants. *Journal of Plant Biology* 55: 93–101.
32. Terashima I, Funayama S, Sonoike K (1994) The site of photoinhibition in leaves of *Cucumis sativus L.* at low temperatures is photosystem I, not photosystem II. *Planta* 193: 300–306.
33. Rochaix JD (2011). Assembly of photosynthetic complexes. *Plant Physiology*. DOI: 10.1104/pp.110.169839.
34. Sone C, Ito O, Sakagami JI (2012) Characterizing submergence survival strategy in rice via chlorophyll fluorescence. *Journal of Agronomy and Crop Science* 198: 152–160.
35. Buchanan-Wollaston V (1997) The molecular biology of leaf senescence. *Journal of Experimental Botany* 48: 181–199.
36. Dai JM, Gao HY, Dai YH, Zou Q (2004) Changes in activity of energy dissipating mechanisms in wheat flag leaves during senescence. *Plant Biology* 6: 171–177.
37. Hossain Z, López-Climent MF, Arbona V, Pérez-Clemente RM, Gómez-Cadenas A (2009) Modulation of the antioxidant system in citrus under waterlogging and subsequent drainage. *Journal of plant physiology* 166: 1391–1404.
38. Kumagai E, Araki T, Kubota F (2009) Characteristics of gas exchange and chlorophyll fluorescence during senescence of flag leaf in different rice (*Oryza sativa L.*) cultivars grown under nitrogen-deficient condition. *Plant production science* 12: 285–292.
39. Zhang LT, Zhang ZS, Gao HY, Xue ZC, Yang C, et al. (2011) Mitochondrial alternative oxidase pathway protects plants against photoinhibition by alleviating inhibition of the repair of photodamaged PSII through preventing formation of reactive oxygen species in *Rumex K-1* leaves. *Physiologia Plantarum* 143: 396–407.