

The Role of PIN1 on Odontogenic and Adipogenic Differentiation in Human Dental Pulp Stem Cells

Young-Man Lee,¹ Seung-Yun Shin,² Seong-Suk Jue,³ Il-Keun Kwon,⁴
Eun-Hee Cho,⁵ Eui-Sic Cho,⁶ Sang-Hyuk Park,^{7,*} and Eun-Cheol Kim^{1,*}

Recently, the involvement of PIN1, a peptidyl-prolyl cis/trans isomerase, has been reported in age-related bone homeostasis and adipogenesis. However, the role of PIN1 during odontogenic and adipogenic differentiation remains to be fully understood, particularly regarding human dental pulp stem cells (HDPSCs). Thus, in the present study, we have investigated the role of PIN1 in odontogenic and adipogenic differentiation of HDPSCs and signaling pathways possibly involved. PIN1 mRNA and protein level were upregulated in a time-dependent manner during adipogenic differentiation, increasing until 1 day of odontogenic induction and then steadily declined during odontogenic differentiation. Treatment of a known PIN1 inhibitor, juglone, significantly increased odontogenic differentiation as confirmed by alkaline phosphatase (ALP) activity, calcium deposition, and mRNAs induction of odontogenic markers [ALP, osteopontin (OPN), osteocalcin (OCN), dentin sialophosphoprotein (DSPP), and dentin matrix protein 1 (DMP-1)]. On the contrary, adipogenic differentiation was dramatically reduced upon juglone treatment, with concomitant downregulation of lipid droplet accumulation and adipogenic marker genes [peroxisome proliferation-activated receptor gamma (PPAR γ), lipoprotein lipase (LPL), and adipocyte fatty acid-binding protein (AP2)]. In contrast to PIN1 inhibition, the overexpression of PIN1 via adenoviral infection (Ad-PIN1) in HDPSCs inhibited odontogenic differentiation but increased adipogenic differentiation, in which stem cell property markers such as stage-specific embryonic antigen-4 (SSEA-4) and STRO-1 were upregulated during odontogenic differentiation but downregulated in adipogenic differentiation. Consistently, juglone-mediated inhibition of PIN1 augmented the osteogenic medium (OM)-induced activation of bone morphogenetic protein (BMP), Wnt/ β -catenin, extracellular signal-regulated kinase (ERK), c-Jun N-terminal kinase (JNK), and nuclear factor-kappa B (NF- κ B) pathway, which response was reversed by Ad-PIN1. Moreover, juglone blocked the adipogenic induction medium-induced activation of PPAR γ , C/EBP α , C/EBP β , ERK, and NF- κ B pathways, which was rescued by Ad-PIN1 infection. In summary, the present study shows for the first time that PIN1 acts as an important modulator of odontogenic and adipogenic differentiation of HDPSCs and may have clinical implications for regenerative dentistry.

Introduction

REGENERATIVE DENTAL PULP strategies require the identification of precursors able to differentiate into odontoblast-like cells that secrete reparative dentin after injury [1]. Human dental pulp cells (HDPCs) proliferate and differentiate into osteoblast-like or odontoblast-like cells and secrete type I collagen and other noncollagenous proteins, including osteocalcin (OCN), osteopontin (OPN), alkaline

phosphatase (ALP), bone sialoprotein (BSP), dentin matrix protein 1 (DMP-1), and dentin sialophosphoprotein (DSPP), which are markers for odontoblast/osteoblast-like differentiation of HDPCs [2,3]. Furthermore, HDPCs have stem cell properties, showing potential to differentiate into other cell lineages, such as odontoblastic, osteoblastic, neurogenic, and adipocytic cell types *in vitro* [4–6]. However, the molecular mechanisms inducing growth and differentiation of HDPCs remain to be elucidated.

¹Department of Maxillofacial Tissue Regeneration, Research Center for Tooth and Periodontal Regeneration (MRC), School of Dentistry, Kyung Hee University, Seoul, Republic of Korea.

Departments of ²Periodontology, ³Oral Anatomy, ⁴Maxillofacial Biomedical Engineering, and ⁵Orthodontics, School of Dentistry, Kyung Hee University, Seoul, Republic of Korea.

⁶Department of Oral Anatomy, Cluster for Craniofacial Development and Regeneration Research, Institute of Oral Biosciences, School of Dentistry, Chonbuk National University, Jeonju, Republic of Korea.

⁷Department of Conservative Dentistry, School of Dentistry, Kyung Hee University, Seoul, Republic of Korea.

*These authors contributed equally to this work.

Phosphorylation of proteins on Ser/Thr residues is an important cellular signaling mechanism to induce their functional activity [7]. The peptidyl-prolyl cis/trans isomerase NIMA-interacting 1 (PIN1) has been identified as a regulator of the phosphorylation-mediated signaling that catalyzes the conversion of specific phosphorylated motifs between the two completely distinct conformations in a subset of proteins [8]. PIN1 regulates diverse cellular processes, including growth-signal responses, cell cycle progression, cellular stress responses, neuronal function, and immune responses [9,10]. For example, neuronal differentiation of primary neuronal precursor cells was impaired in the absence of PIN1 but enhanced upon forced expression of PIN1 [11]. In addition, the adipogenesis of human preadipocytes [12] and mouse embryonic fibroblasts [13] was markedly suppressed by PIN1 gene silencing, which resulted in the diet-induced obesity-resistant PIN1 knock-out (KO) mice [12]. In contrast, silencing or inhibition of PIN1 promoted skeletal muscle differentiation of C2C7 murine muscle cells and myeloid differentiation of primary acute myeloid leukemia blasts, respectively [14]. Notably, the important role of PIN1 in age-related bone homeostasis has been reported [15]. However, nothing is known about the role of PIN1 in odontogenic and adipogenic differentiation of human dental pulp cells (HDPCs).

Therefore, the purpose of the present study was to clarify the role of PIN1 in odontogenic and adipogenic differentiation of HDPCs, with its underlying signal transduction pathways.

Materials and Methods

Reagents

Dulbecco's modified Eagle's medium (DMEM), fetal bovine serum (FBS), and penicillin/streptomycin were purchased from Gibco BRL Co. (Grand Island, NY). Juglone, ascorbic acid, β -glycerophosphate, dexamethasone, insulin, indomethacin, methyl-isobutylzanthine, and β -actin antibody were purchased from Sigma-Aldrich Chemical Co (St. Louis, MO). Smad2/3 antibody was purchased from BD Bioscience. Antibodies against phospho-extracellular signal-regulated kinase (p-ERK), ERK, phospho-c-Jun N-terminal kinase (p-JNK), JNK, phospho-Smad2 (p-Smad2), phospho-GSK3 β , C/EBP α , Smad1/5/8, and phospho-Smad1/5/8 (p-Smad1/5/8) were purchased from Cell Signaling, Inc. (Beverly, MA). Smad-ubiquitin regulatory factor 1 (Smurf1), bone morphogenetic protein 2 (BMP-2), peroxisome proliferation-activated receptor gamma (PPAR γ), C/EBP β , Wnt1, Wnt3a, Wnt5a, PIN1, phospho-nuclear factor of kappa light polypeptide gene enhancer in B-cells inhibitor, alpha (I κ B) (p-I κ B), I κ B, p65, phospho-Akt (p-Akt), Akt, and donkey anti-goat IgG were purchased from Santa Cruz Biotechnology (Delaware Avenue, CA).

Cell culture

Surgical pulp samples ($n=10$) were obtained from nine patients (four females and five males), with a mean age of 16 years, at the Department of Oral and Maxillofacial Surgery, Kung Hee Dental Hospital (University of Kung Hee, Seoul, Korea), during orthodontic treatment. Dental pulps were isolated after tooth extraction as previously reported [16]. Cells were cultured in alpha-minimum essential me-

dium (α -MEM; Gibco, Life Technologies, Grand Island, NY) supplemented with 10% FBS (Hyclone), 100 U/mL penicillin, and 100 μ g/mL streptomycin at 37°C in 5% CO₂. The fresh medium was changed every 2 days. Cells were subcultured at the ratio of 1:3 when they reached 75%–85% confluence. Experiments were performed only in the first five cell passages. All experimental procedures were approved by the Institutional Review Board of Kyung Hee University, Seoul, South Korea.

To induce odontogenic differentiation, primary HDPCs were cultured with OM (DMEM, 1% FBS, 50 μ g/mL ascorbic acid, 10 mM β -glycerophosphate, and 10⁻⁷ M dexamethasone) for 7 and 14 days [17]. For adipogenic differentiation, the adipogenic induction medium (AM, high glucose DMEM, 10% FBS, 1 μ M dexamethasone, 10 μ g/mL insulin, 100 μ M indomethacin, and 0.5 mM methyl-isobutylzanthine) was used to induce differentiation [18,19]. The medium was removed and replaced with the adipogenic maintenance medium (high glucose DMEM, 10% FBS, 10 μ g/mL insulin) for 4 and 11 days [18,19].

Preparation of adenovirus

Preparation and amplification of adenovirus was performed as described previously [12]. Adenoviruses encoding PIN1 were created using the Virapower adenovirus expression system according to the manufacturer's instruction (Invitrogen, Carlsbad, CA). Site-specific recombination between entry vectors (PIN1-pENTR) and the adenoviral destination vector (pAd/PL-DEST) were established with LR clonase II (Invitrogen). Viruses from the culture supernatants of 293 cells that showed cytopathogenic effects were purified by cesium chloride banding. Virus titers were determined by a plaque assay using serial dilution.

Isolation of RNA and reverse transcription polymerase chain reaction

Total RNA was isolated using the TRIzol reagent (Invitrogen) according to the manufacturer's instructions. It was then reverse transcribed using AccuPower RT pre-mix (Bioneer, Daejeon, Korea). Polymerase chain reaction (PCR) amplification of the resulting cDNA samples was performed using a GeneAmp PCR System 2400 thermal cycler (PerkinElmer, Wellesley, MA). Primer information is summarized in Table 1. The following PCR conditions were used: 34 cycles of denaturation at 95°C for 30 s, primer annealing at 60°C for 30 s, and extension at 72°C for 30 s. The PCR products were resolved on 1.5% agarose gels and stained with ethidium bromide.

Preparation of whole cell lysates, cytosolic, and nuclear extracts

Cells (10 \times 10⁶) were harvested, washed once with ice-cold phosphate-buffered saline (PBS), and gently lysed for 30 min in ice-cold lysis buffer [1 mM MgCl₂, 350 mM NaCl, 20 mM *N*-2-hydroxyethylpiperazine-*N'*-2-ethane sulfonic acid (HEPES), 0.5 mM ethylenediaminetetraacetate (EDTA), 0.1 mM ethyleneglycol-*bis*(β -aminoethyl ether)-*N,N'*-tetraacetic acid (EGTA), 1 mM dithiothreitol (DTT), 1 mM Na₄P₂O₇, 1 mM PMSF, 1 mM aprotinin, 1.5 mM leupeptin, 1 mM Na₃VO₄, 20% glycerol, 1% NP40]. Cell lysates were centrifuged for 10 min at 4°C (10,000 g) to obtain the

TABLE 1. REVERSE TRANSCRIPTASE-POLYMERASE CHAIN REACTION PRIMERS

Gene	Sequence 5'-3'	Size (bp)
<i>PIN1</i>	Forward: ATGGCGGACGAGGAGAAGCTGCC Reverse: GGAAGAGCCAGGACCCCATGGGA	175
<i>ALP</i>	Forward: GCCACTCCGCGCCCGCTAT Reverse: CCAATTGCAGGGCGTCCCGAA	246
<i>Osteopontin</i>	Forward: GCCAAACGCCGACCAAGGTACA Reverse: TTCCTGCACAGTCACCCACTGAA	345
<i>Osteocalcin</i>	Forward: AGCCCTCACACTCCTCGCCCTAT Reverse: AGCCTGGTTCACCCAGCTCA	301
<i>DMP-1</i>	Forward: AGAGAGAGATGGGAGAGCTGCGC Reverse: TGACCTTCCATCTGCCTCCTGTTC	202
<i>DSPP</i>	Forward: GCAAAAGTCCAGGACAGTGGGCC Reverse: GTCAAATTTCCACCTCAGTTGGCCA	342
<i>PPARγ</i>	Forward: GGATGAGAGCTGGGGAGAAGGGGGT Reverse: CGCGTCCACTCGAGTCGGCA	233
<i>LPL</i>	Forward: CGACTTGCTCAGCGCCAAACC Reverse: CATCCACCGCCCTTCCAACCTC	299
<i>AP2</i>	Forward: GCACCCTCCTGAAAACCTGCAGCTT Reverse: TCTGGCCAGGGCTTCCAGACAT	237
<i>TGF-β1</i>	Forward: GGGCATCTAGTGGATTGAGGG Reverse: CCTTCAGGAGATGGCCTCAG	112
<i>TGF-β2</i>	Forward: TGTAAATTGTCAGTTGCGGTG Reverse: CGTAGGATCGTCCAACCTGG	460
<i>TGF-β3</i>	Forward: AGGCAGCAGTAGCTAACCTC Reverse: AGCATAGAGCTGTTGCCTGG	200
<i>TGF-β1</i>	Forward: GGGTGCTAAGAAGGGGGAAC Reverse: ACTTCAGCATTCCCCCGAAG	316
<i>TGF-βII</i>	Forward: AGGCCGAGGAAACTTGCTTT Reverse: ACCCCTTCAGCCATCCCTAT	479
<i>β-Actin</i>	Forward: CATGGATGATGATATCGCCGC Reverse: ACATGATCTGGGTCATCTTCT	319

supernatants (whole cell lysate). For the cytosolic extracts, the confluent cells were washed in ice-cold PBS, suspended in ice-cold hypotonic buffer (10 mM HEPES, pH 7.9), 1.5 mM MgCl₂, 10 mM KCl, 0.3% NP-40, 0.1 mM EDTA, 0.1 mM EGTA, 0.5 mM DTT, 0.1 mM PMSF, 0.1% aprotinin, and lysed for 15 min on ice. The lysates were centrifuged for 10 min at 10,000 g. The supernatants were designated as cytosolic extracts. The nuclear pellet was resuspended in the high salt lysis buffer (10 mM HEPES, 1.5 mM MgCl₂, 420 mM NaCl, 0.2 mM EDTA, 0.1 mM EGTA, 25% glycerol, 0.5 mM DTT, 0.1 mM PMSF, 0.1% aprotinin) and incubated at 4°C for 30 min. The resulting supernatants were reserved as nuclear extracts. The protein concentrations of samples were determined by Bio-Rad (Hercules, CA) protein assay.

Western blot analysis

Proteins (30 μ g per lane) were then separated by 6%–15% sodium dodecyl sulfate–polyacrylamide gel electrophoresis and blotted onto Hybond-N nitrocellulose. The membrane was then rinsed once with Tris-buffered saline (TBS) and blocked for 1 h in blocking buffer (TBS with 5% nonfat dry milk and 0.05% Tween 20) and then incubated with primary antibody diluted in 2.5% blocking buffer. Unbound primary antibody was subsequently removed by washing three times in TBS containing 0.05% Tween 20, before bound primary antibody was labeled through incubation at room temperature for 1 h with horseradish peroxidase-conjugated sec-

ondary antibody. Following three washes in TBS containing 0.05% Tween 20, the membranes were developed using the ECL chemiluminescence detection kit.

ALP assay

Incubated HDPCs were washed with PBS and then sonicated with a cell disruptor. ALP activity was measured using *p*-nitrophenyl phosphate (3 mM final concentration) as the substrate in 0.7 M 2-amino-methyl-1-propanol (pH 10.3) and 6.7 mM MgCl₂. Absorbance was measured at 410 nm using an enzyme-linked immunosorbent assay reader (Beckman Coulter, Fullerton, CA).

Alizarin red staining

After incubation in OM for 7 and 14 days, cell mineralization was determined using Alizarin red staining. Cells were washed twice in distilled water and fixed by incubation in ice-cold 70% (v/v) ethanol for 1 h. They were then rinsed twice in deionized water and stained with Alizarin red (dissolved in deionized water, pH 4.2) for 10 min at room temperature.

Oil red O staining

The adipogenic cultures were fixed in 4% paraformaldehyde (in PBS) for 1 h. The sample was then washed with 60% isopropanol (in PBS). It was stained with fresh 60% Oil Red-O solution (in PBS) for 2 h and washed with distilled water.

Flow cytometric analysis

For stage-specific embryonic antigen-4 (SSEA-4) and STRO-1, antigens from BD Pharmingen (Buccinasco, Milan, Italy) were used. Alexa Fluor 488 goat anti-mouse IgG (Molecular Probes, Eugene, OR) was used as the secondary antibody. Cells were fixed in 4% paraformaldehyde for 30 min. Primary antibodies were incubated in 1% bovine serum albumin (BSA)/PBS for 6 h at 4°C. Secondary antibodies were incubated in 1% BSA/PBS for 2 h at 4°C. After the final wash, a total of 10,000 events was acquired and analyzed using a FACsCalibur apparatus (Becton Dickinson, Franklin Lakes, NJ) using Cell Quest Research Software (Becton Dickinson).

Immunofluorescence assay

For the localization of p65, HDPCs were seeded onto glass coverslips in six-well plates at a density of 1×10^5 cells/well. Treated cells were fixed with 4% paraformaldehyde for 30 min following permeabilization with 0.1% Triton X-100. After being washed in PBS buffer, slides were blocked with 10% normal goat serum for 1 h and then incubated with mouse monoclonal anti-human p65 antibody for 2 h at a 1:100 dilution in 1% normal goat serum. The slides were washed with PBS, incubated with fluorescein isothiocyanate (FITC)-conjugated goat anti-mouse IgG at a 1:500 dilution in 0.5% normal goat serum for 1 h, and counterstained for nuclei with 10 μ g/mL propidium iodide. Slides were imaged at 400 \times magnification on a confocal microscope (Olympus, Tokyo, Japan).

Mouse tooth germ and dental pulp histology and immunohistochemistry

Mandibles from 1-, 7-, and 28-day-old mice were dissected and fixed in 4% paraformaldehyde overnight at 4°C. After rinsing with 0.01 M PBS, the specimens were decalcified in 10% EDTA/PBS for 2–4 weeks, then dehydrated, embedded in paraffin, and sectioned at a thickness of 5 μ m. For immunostaining, tissue sections were treated with 3% hydrogen peroxide and incubated with rabbit polyclonal anti-Pin1 antibody (1:200; Santa Cruz Biotechnology, Inc., Santa Cruz, CA). Histostain Plus Rabbit Primary (DAB) kit (Zymed Laboratories, San Francisco, CA) was used according to the manufacturer's instructions.

Statistical analysis

Differences among groups were analyzed using one-way analysis of variance combined with the Bonferroni test. All values were expressed as means \pm standard deviations, and differences were considered significant at $P < 0.05$.

Results

Time course of PIN1 mRNA and protein expression during odontogenic and adipogenic differentiation of HDPCs

To investigate the expression of PIN1 mRNA and protein during odontogenic or adipogenic differentiation of HDPCs, cells were cultured in OM or AM for 14 days, and the samples were analyzed by conventional reverse transcription polymerase chain reaction (RT-PCR) and western

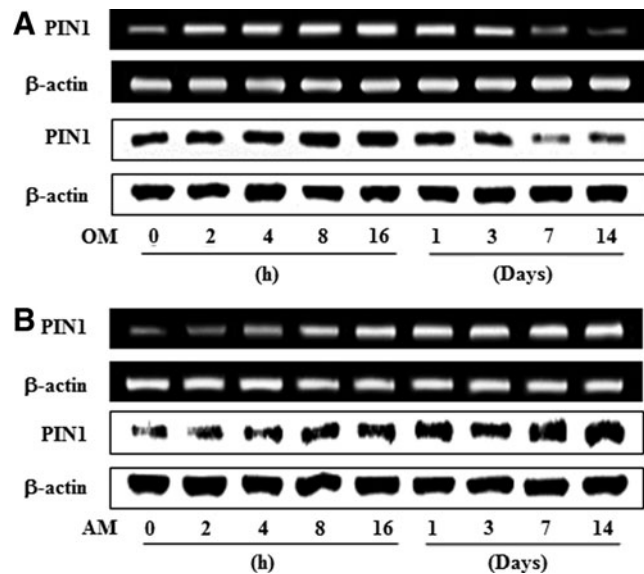


FIG. 1. Time course expression of PIN1 during odontogenic (A) and adipogenic (B) differentiation in HDPCs. For odontogenic differentiation, cells were cultured in OM containing 10 mM β -glycerophosphate, 50 μ g/mL ascorbic acid, and 100 nM dexamethasone for indicated times. For adipogenic differentiation, cells were cultured in adipogenic induction media (high DMEM, 10% FBS, 1 μ M dexamethasone, 10 μ g/mL insulin, 100 μ M indomethacin, and 0.5 mM methylisobutylzanthine) for 3 days, and AM (high glucose DMEM, 10% FBS, and 10 μ g/mL insulin) for 11 days. These data are representative of three independent experiments. HDPCs, human dental pulp stem cells; DMEM, Dulbecco's modified Eagle's medium; PIN1, peptidyl-prolyl cis/trans isomerase NIMA-interacting 1; FBS, fetal bovine serum; OM, osteogenic medium; AM, adipogenic induction medium.

blotting (Fig. 1A, B). Moderate PIN1 levels were detected in nonstimulated cells, and PIN1 mRNA and protein was increased early, with highest expression 1 day after OM treatment and a decrease was observed thereafter (Fig. 1A). In contrast, expression of PIN1 mRNA and protein was increased in a time-dependent manner following exposure to AM after the initiation of treatment (Fig. 1B).

Effects of PIN1 inhibition and activation on cell growth and stem cell characteristics in HDPCs

To examine the effects of PIN1 inhibition and overexpression on cell growth, the cell viability was analyzed by MTT assay. As shown in Figure 2A and B, juglone and adenovirus PIN1 (Ad-PIN1) did not significantly affect cell viability during odontogenic and adipogenic differentiation in HDPCs. To investigate how stem cell properties were affected by PIN1 inhibition and activation, SSEA-4- and STRO-1-positive cells were counted by flow cytometry. SSEA-4⁺ and STRO-1⁺ cells were decreased in OM- and AM-treated cells, compared with control HDPCs. Treatment with the PIN1 inhibitor, juglone, enhanced OM-induced decrease of SSEA-4⁺ and STRO-1⁺ cells but reversed AM induction in these cells (Fig. 2C, E). In contrast, pretreatment with Ad-PIN1 to activate PIN1 reversed OM-induced decrease of SSEA-4⁺ and STRO-1⁺ cells (Fig. 2D) but enhanced AM induction of these factors (Fig. 2F).

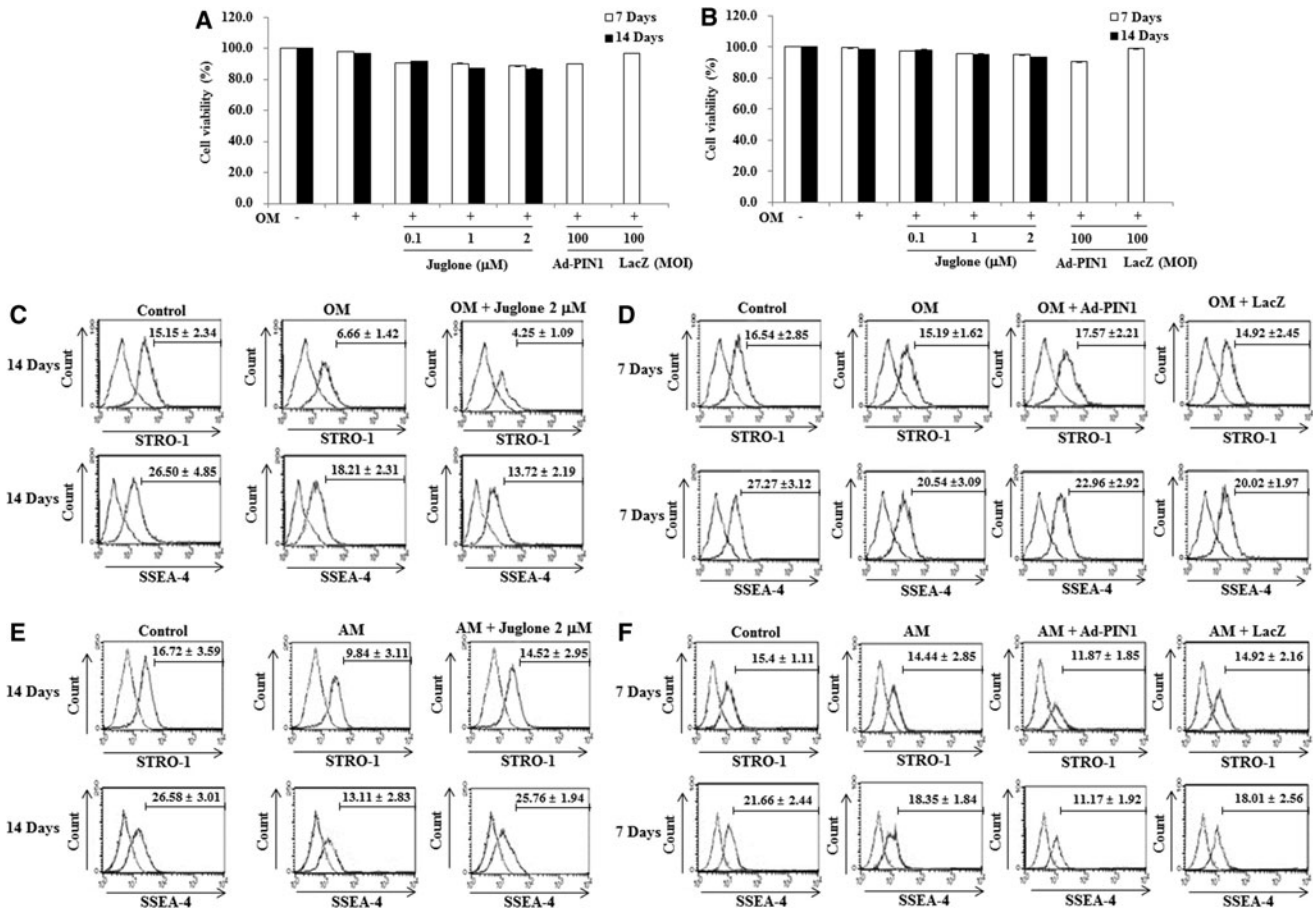


FIG. 2. Effects of PIN1 inhibitor (juglone) and Ad-PIN1 on cell growth (**A, B**) and stem cell characteristics (**C–F**) during odontogenic (**A, C, D**) or adipogenic differentiation (**B, E, F**). Cell growth was evaluated by MTT assay ($n=5$). The expression of stem cell surface markers was analyzed by flow cytometry ($n=3$). Data are representative of three independent experiments. Ad-PIN1, adenovirus PIN1.

Effects of PIN1 inhibition on odontogenic differentiation of HDPCs

To investigate the potential of HDPCs undergoing odontoblast-like differentiation after PIN1 inhibitor (juglone) treatment, we assessed ALP activity, Alizarin red staining, and the level of mRNA encoding ALP, OPN, OCN, DMP-1, and DSPP. ALP activity and calcified nodule formation of HDPCs were markedly stimulated by juglone in a dose-dependent manner (Fig. 3A, B). In addition, juglone dose-dependently upregulated osteogenic (ALP, OPN, and OCN) and odontogenic (DMP-1 and DSPP) mRNAs (Fig. 3C).

Effects of PIN1 overexpression on odontogenic differentiation of HDPCs

To evaluate the effects of overexpression of PIN1 by Ad-PIN1 in HDPCs, HDPCs transduced with Ad-PIN1 were probed by western blot. Virus-derived activation of PIN1 could be detected in HDPCs throughout the 7-day culture period. However, decline of PIN1 expression by adenovirus was noted after 7 days in culture (Fig. 4A). We next examined the effect of exogenous Ad-PIN1 on odontogenic

differentiation in HDPCs. As shown in Figure 3B, mock-infected cells showed the same level of expression with OM in ALP activity, Alizarin red stain and mRNA expression for marker genes. However, PIN1 overexpression blocked OM-induced ALP activity, mineralized module formation, and upregulation of ALP, OPN, OCN, DMP-1, and DSPP mRNA expression in HDPCs (Fig. 4B–D).

Effects of PIN1 inhibition and overexpression on adipogenic differentiation in HDPCs

To investigate the effects of PIN1 inhibition and activation on adipogenic differentiation, numbers of adipogenic cells were estimated by Oil Red-O staining and by assessing the expression of marker genes using RT-PCR. As shown in Figure 5A and B, Oil Red-O-positive colonies and mRNA expression of adipogenesis-related genes, such as PPAR γ , lipoprotein lipase (LPL), and adipocyte fatty acid-binding protein (AP2) were decreased by juglone in a dose-dependent manner. In contrast, Ad-PIN1 increased red-colored lipid droplets in the Oil Red experiment (Fig. 5B), and mRNA expression of differentiation markers, PPAR γ , LPL, and AP2, was not affected by Ad-LacZ (Fig. 5D).

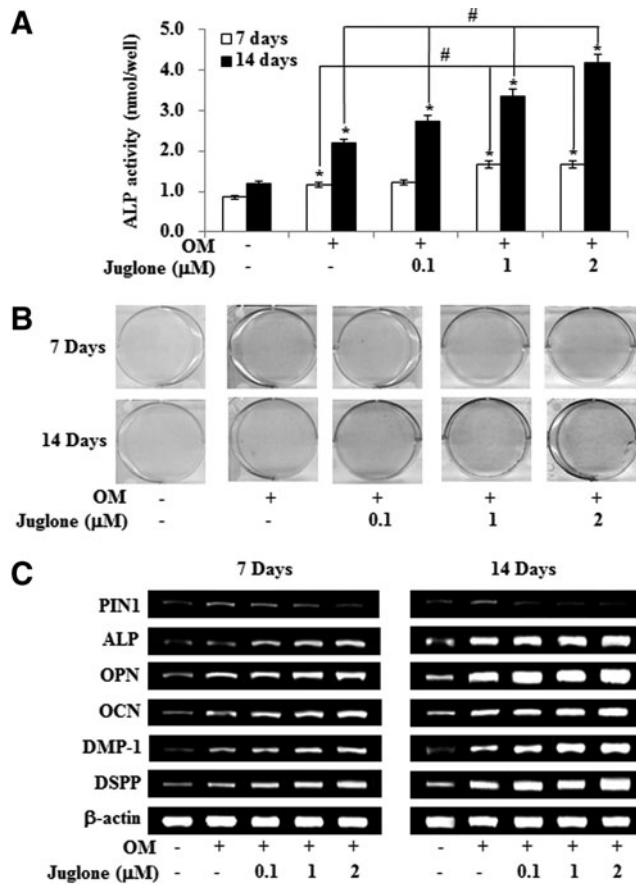


FIG. 3. Effects of PIN1 inhibition by juglone on odontogenic differentiation in HDPCs. Cells were treated with juglone and OM for 7 and 14 days. Differentiation was assessed by (A) measuring ALP activity ($n=5$), (B) Alizarin red staining, and (C) RT-PCR for 7 and 14 days. * $P<0.05$ compared to the control; # $P<0.05$ compared with OM alone. Data are representative of three independent experiments. ALP, alkaline phosphatase; RT-PCR, reverse transcription polymerase chain reaction.

Effects of PIN1 inhibition and overexpression on transforming growth factor-beta, BMP, and Wnt/ β -catenin pathways during odontogenic differentiation in HDPCs

To ask whether the BMP pathway may be involved in odontogenic differentiation of HDPCs, we examined the effects of OM on the expression of BMP-2 and its downstream phosphorylation (p) of Smad1/5/8 and Smurf1. OM treatment time dependently increased the expression of BMP-2 and p-Smad1/5/8 but decreased Smurf1 expression (Fig. 6A). Because the BMP pathway was activated by OM in HDPCs, we next tested whether PIN1 activation or inhibition might influence these same signaling molecules. Treatment of HDPCs with juglone enhanced OM-induced BMP-2 and p-Smad1/5/8 expression and downregulated Smurf1. In contrast, pretreatment with Ad-PIN1 and the BMP inhibitor noggin blocked OM-induced BMP-2 and p-Smad1/5/8 expression and downregulated Smurf1 (Fig. 6B).

To examine the involvement of Wnt/ β -catenin signaling in the regulation of odontogenic differentiation, the effects

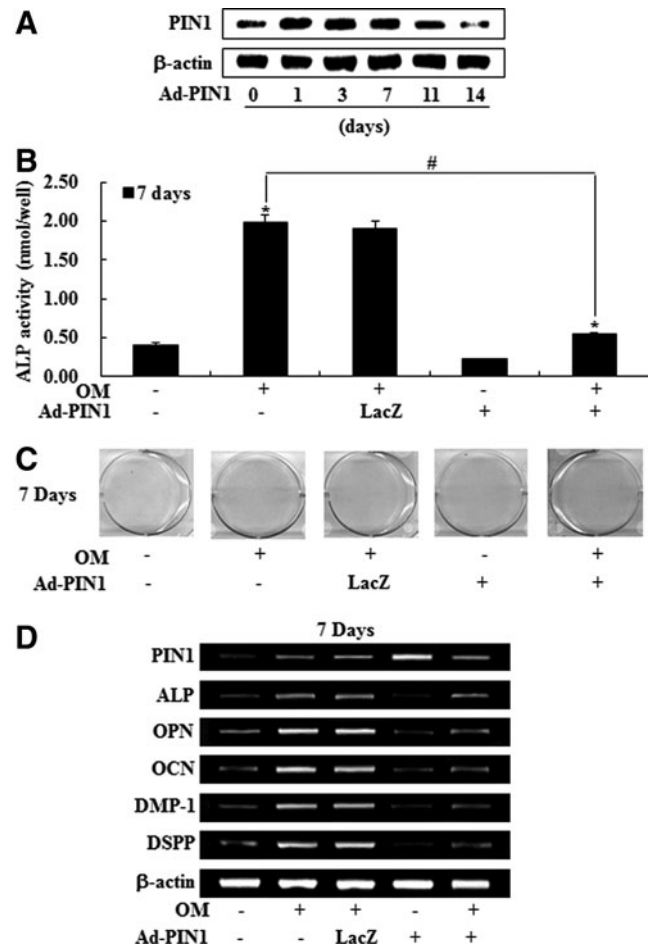


FIG. 4. Effects of PIN1 overexpression by Ad-PIN1 on odontogenic differentiation in HDPCs. Cells were pre-treated with Ad-PIN1 for 5 h and post-treated with OM for 14 days. Time course expression of Ad-PIN1-induced PIN1 was examined by western blotting (A). Differentiation was assessed by (B) measuring ALP activity ($n=5$), (C) Alizarin red staining, and (D) RT-PCR. * $P<0.05$ compared to the control; # $P<0.05$ compared with OM alone. Data are representative of three independent experiments.

of OM on expression levels of Wnt ligands and β -catenin protein expression were measured (Fig. 7C). We found that OM induced *Wnt1* and *Wnt3a* expression in a time-dependent manner, whereas *Wnt5a* was not changed (data not shown). As a consequence, OM also enhanced total β -catenin protein levels in HDPCs (Fig. 7C). Treatment of HDPCs with juglone enhanced OM-activation of Wnt/ β -catenin signaling, including *Wnt1*, *Wnt3a*, and β -catenin, whereas PIN1 activation by Ad-PIN1 showed opposing effects (Fig. 7D). Furthermore, Dickkopf-1 (DKK-1), an antagonist of canonical Wnt signaling, also blocked OM-induced Wnt and β -catenin activation.

To examine whether endogenous transforming growth factor-beta (TGF- β) ligands and receptors were upregulated during odontoblastic differentiation, mRNA expression of TGF- β 1, TGF- β 2, TGF- β 3, TGF- β type I receptor (TGF- β RI), and TGF- β type II receptor (TGF- β RII) were accessed. OM treatment time dependently increased the mRNA expression of TGF- β ligands and receptors (Fig. 8A). However,

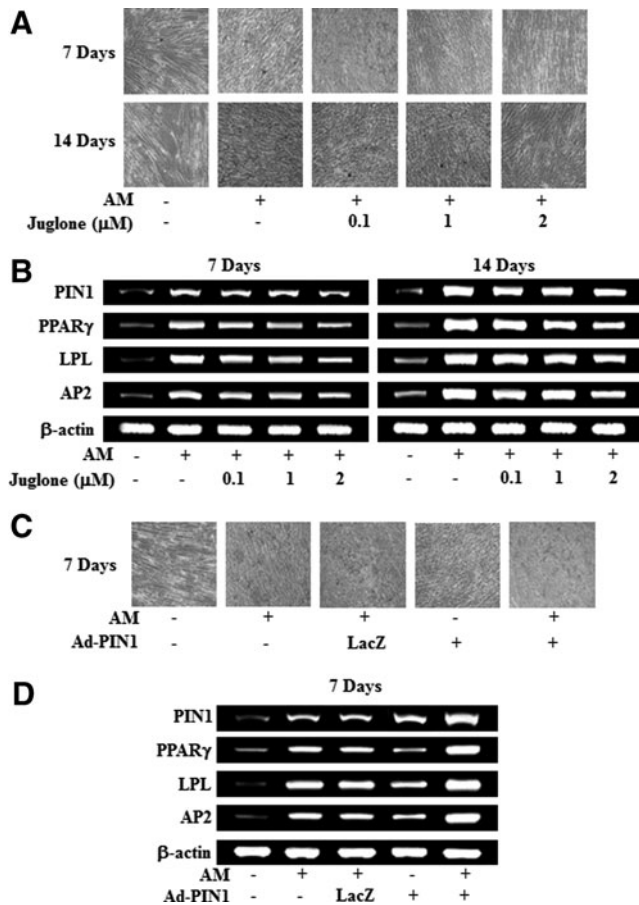


FIG. 5. Effects of PIN1 inhibition and overexpression on adipogenic differentiation in HDPCs. Cells were treated with juglone and AM (A, B). Cells were pretreated with Ad-PIN1 for 5 h and post-treated with AM for 7 days (C, D). Differentiation was assessed by Oil-red O stain (A, C) and RT-PCR (B, D). These data are representative of three independent experiments.

treatment with juglone and Ad-PIN1 had no effects on OM-induced TGF- β ligand and receptors activation (Fig. 8B). To investigate whether the TGF- β , BMP, and Wnt regulate PIN1 expression, HDPCs were pretreated with inhibitors of these signaling molecules. OM-induced PIN1 upregulation was not changed by the BMP inhibitor noggin, the Wnt inhibitor DKK-1, and TGF- β inhibitor SB431542 (Fig. 8C).

Effects of PIN1 inhibition and activation on overexpression of the mitogen-activated protein kinase and nuclear factor-kappa B pathways during odontogenic differentiation in HDPCs

Because the mitogen-activated protein kinase (MAPK) and nuclear factor-kappa B (NF- κ B) pathways are involved in odontogenic differentiation in HDPCs, as we described previously [19–21], we asked whether PIN1 activation or inhibition might influence these signaling molecules (Fig. 9). Pretreatment with juglone enhanced OM-induced phosphorylation of ERK and JNK but had no effect on the activation of p38. In contrast, pretreatment with Ad-PIN1 decreased OM-induced phosphorylation of ERK and JNK

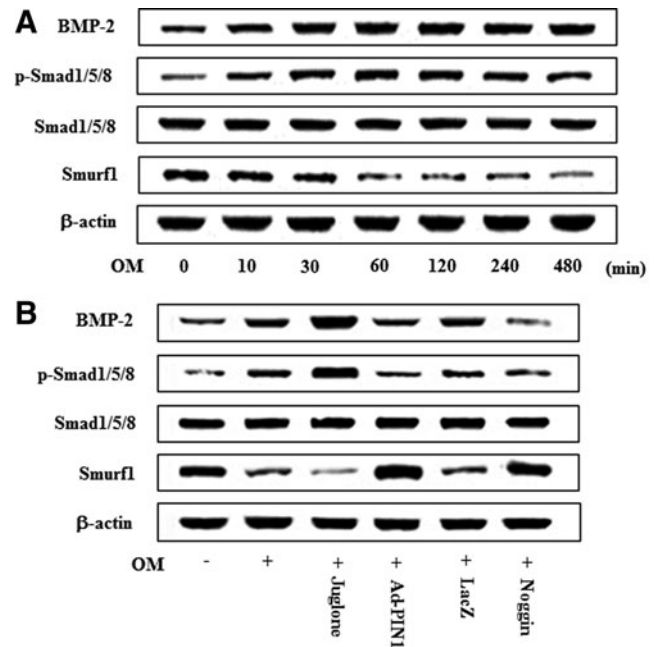


FIG. 6. Effects of PIN1 inhibitor (juglone) and Ad-PIN1 on BMP-2/Smad pathway expression during odontogenic differentiation in HDPCs. Time course expression of OM-induced BMP-2/Smad pathway was examined at indicated time points by western blotting (A). Cells were pretreated with Ad-PIN1 for 5 h or BMP-2 inhibitor (noggin) 100 ng/mL, and post-treated with OM or juglone 2 μ M and OM for indicated 60 min (B). Data are representative of three independent experiments. BMP-2, bone morphogenetic protein 2.

(Fig. 9A). Furthermore, PIN1 inhibition enhanced OM-induced NF- κ B activation, which we determined by measuring I κ B α degradation and phosphorylation, as well as nuclear translocation of p65. In contrast, Ad-PIN1 inhibited these processes (Fig. 9B). To ascertain whether p65 nuclear translocation following exposure to PIN1 activation or inhibition occurred, we used an immunofluorescence assay to confirm nuclear localization. Treatment with juglone caused the translocation of NF- κ B p65 from the cytoplasm to cell nuclei. However, pretreatment with Ad-PIN1 abolished this NF- κ B activation (Fig. 9C).

Effects of PIN1 inhibition and overexpression on transcriptional events during adipogenic differentiation in HDPCs

To investigate the expression of transcriptional events during adipogenic differentiation of HDPCs, cells were cultured in AM for 7 days and C/EBP β , C/EBP α , and PPAR γ protein were analyzed by western blotting (Fig. 10A). Expression of C/EBP β protein was increased in a time-dependent manner following exposure to OM until 12 h after the initiation of treatment, after which it decreased. However, expression of C/EBP α and PPAR γ protein increased in time-dependent manner for 7 days (Fig. 10A). To investigate the effects of PIN1 inhibition and overexpression on adipogenic marker expression during adipogenic differentiation, the expression of C/EBP β , C/EBP α , and PPAR γ was examined. As shown in Figure 10B, AM-induced activation of C/EBP β , C/EBP α , and PPAR γ

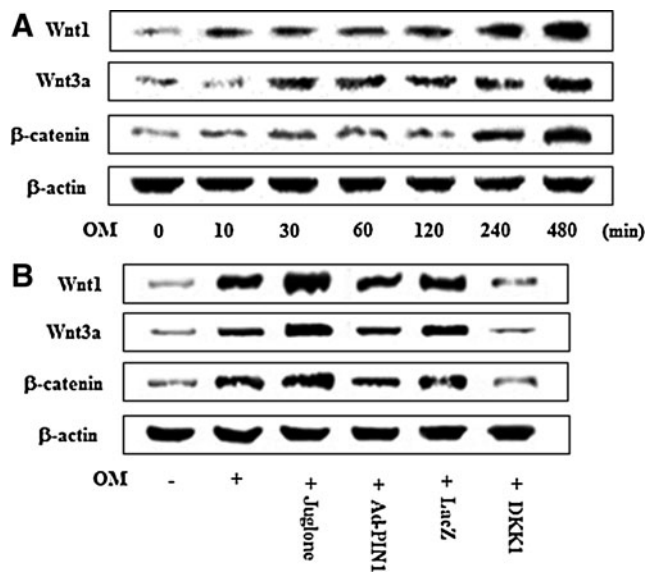


FIG. 7. Effects of PIN1 inhibitor (juglone) and Ad-PIN1 on the Wnt/ β -catenin pathway during odontogenic differentiation in HDPSCs. Time course expression of OM-induced Wnt/ β -catenin pathway protein levels as examined by western blotting (A). Cells were pretreated with Ad-PIN1 for 5 h or Wnt inhibitor (DKK-1) 250 ng/mL for 1 h and post-treated with OM or 2 μ M juglone and OM for 240 min (B). Data are representative of three independent experiments. DKK-1, Dickkopf-1.

was attenuated by juglone treatment but increased following pretreatment with Ad-PIN1.

Effects of PIN1 inhibition and overexpression on the MAPK and NF- κ B pathways during adipogenic differentiation in HPDCs

To investigate whether the MAPK and NF- κ B signal pathways are also affected by AM in HDPCs, we examined MAPK and NF- κ B activation. AM treatment increased the phosphorylation of ERK and p38 and caused the degradation or phosphorylation of I κ B α , as well as the nuclear translocation of p65, but did not affect JNK (Fig. 11A). Maximal expression of p-ERK and p-p38 was detected following the incubation of HDPCs in AM for 30 min, whereas NF- κ B activation levels peaked at 60 min (Fig. 11B). However, PIN1 inhibition and overexpression was not affected by phosphorylation of p38 and JNK (data not shown). Furthermore, AM-mediated activation of NF- κ B and phosphorylation of ERK was abolished by juglone but was enhanced by Ad-PIN1 (Fig. 11C, D).

Expression of PIN1 in mouse tooth germ and dental pulp

To gain more insights into the specific *in vivo* roles of Pin1 during tooth development, the expression of PIN1 was investigated in tooth germ and pulp of bell stage (neonatal mice), root-forming stage (7-day-old mice), and adult tooth stage (28-day-old mice) by immunohistochemistry. In neonatal mice, PIN1 expression was not found in the bell stage of tooth germ except the dental lamina (Fig. 12A). In developing tooth of 7-day-old mice, PIN1 was weakly expressed in odontoblasts, but

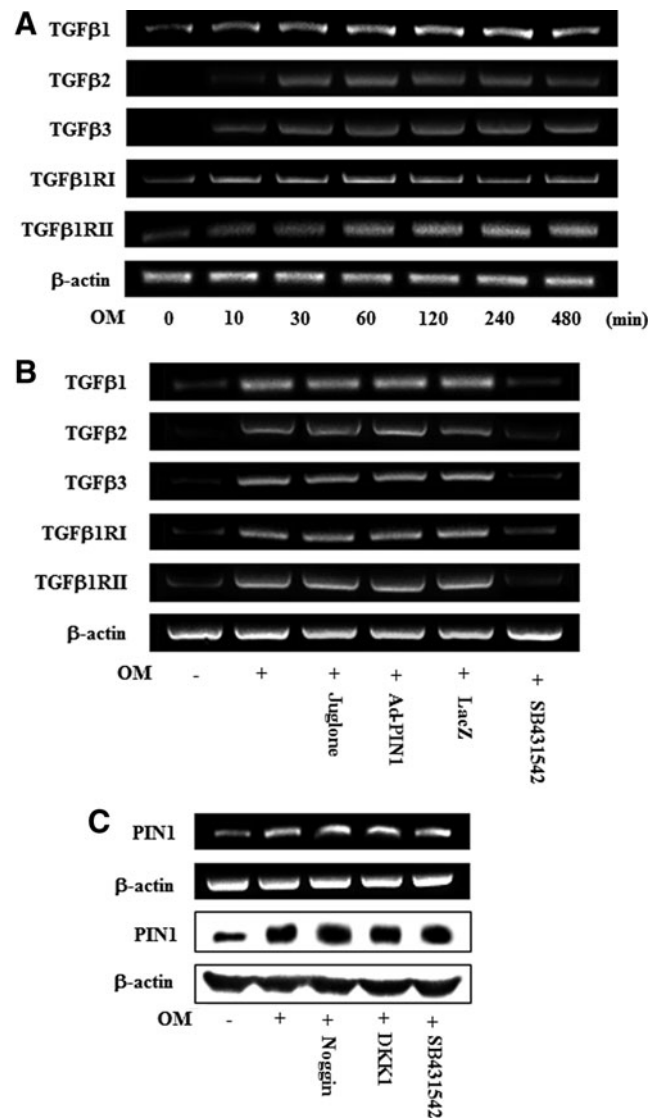


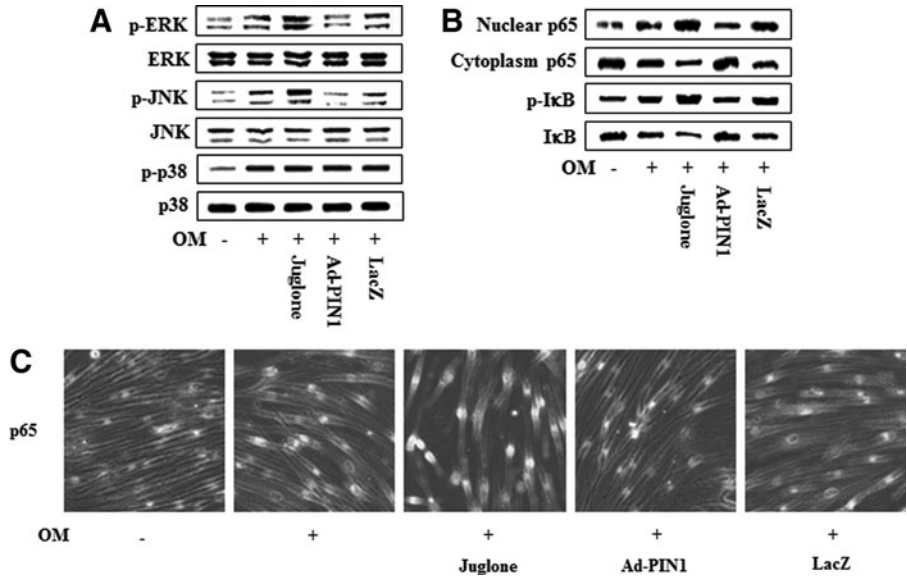
FIG. 8. Time course expression of TGF- β ligands and receptors during odontoblastic differentiation (A). Effects of PIN1 inhibitor (juglone) and Ad-PIN1 on the OM-induced TGF pathway (B). Effects of inhibitors of BMP (noggin), Wnt (DKK-1), and TGF- β (SB431542) on OM-induced PIN1 induction (C). Cells were pretreated with Ad-PIN1 for 5 h and post-treated with OM or 2 μ M juglone and OM for 120 min (B). Cells were pretreated with noggin 100 ng/mL, DKK-1 250 ng/mL, and SB431542 10 μ M and post-treated with OM for 16 h. Data are representative of three independent experiments. TGF- β , transforming growth factor-beta.

not in undifferentiated cells of pulp (Fig. 12B). In the mandibular molar of 28-day-old mice, PIN1 was strongly expressed in the odontoblasts as well as cells of subodontoblast layer (Fig. 12C, D). In addition, PIN1 was expressed in the nerve fibers located in the pulp core (Fig. 12D).

Discussion

Human dental pulp stem cells (HDPSCs) have been demonstrated to be a suitable cell source for dental tissue regeneration because of the clonogenic ability, rapid proliferation

FIG. 9. Effects of the PIN1 inhibitor (juglone) and Ad-PIN1 on MAPK and NF- κ B protein levels during odontogenic differentiation in HDPCs. Cells were pretreated with Ad-PIN1 for 5 h and treated with OM or 2 μ M juglone and OM. Activation of MAPK (30 min) and NF- κ B (60 min) were examined by western blotting (A, B) and confocal microscopy (C). Data are representative of three independent experiments. MAPK, mitogen-activated protein kinase; NF- κ B, nuclear factor-kappa B.



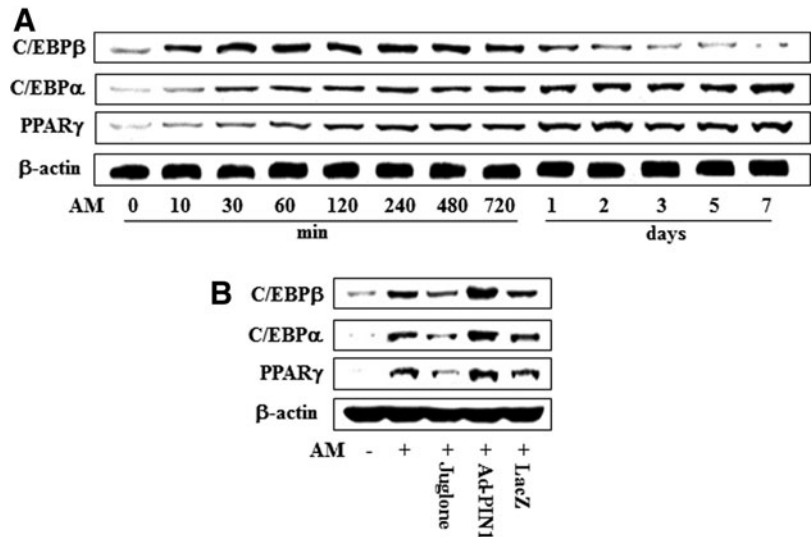
rate, and multiple differentiation potentials [4,5]. Thus, human dental pulp could be a desirable option as a cell source for potential therapeutic applications. Recently, we reported that heme oxygenase-1, lysyl oxidase, and SIRT1 are novel molecular targets of HDPC differentiation and may have clinical implications for regenerative endodontics [21,22–24]. To the best of our knowledge, this is the first reported study examining the expression of PIN1 during odontogenic or adipogenic differentiation, the effects of activating PIN1 with Ad-PIN1, and inhibiting it using juglone on the differentiation of HDPCs.

In the present study, PIN1 mRNA and protein level were significantly increased after 1 day of odontogenic induction and then steadily declined, but were time dependently increased throughout the entire adipogenic differentiation in HDPCs. This adipogenic result is consistent with the study in 3T3-L1 preadipocytes, which PIN1 expression was shown to be upregulated from day 0 to 10 [12]. In contrast, PIN1 expression level does not change during terminal differentiation of skeletal muscle cells [25]. This different ex-

pression pattern of PIN1 might be related to differences in cell or differentiation types.

HDPCs have the capacity to differentiate into adipocytes and odontoblast [4–6]. In general, mechanisms that promote one cell fate actively suppress mechanisms that induce the alternative lineage [25]. Our studies showed that the inhibition of PIN1 by juglone promoted odontogenic differentiation of HDPCs, as evidenced by the formation of mineralized nodules, induction of ALP activity in the early stage, and upregulation of marker genes, such as ALP, OPN, OCN, DMP-1, and DSPP. These results are consistent with previous data that knockdown of PIN1 shRNA promotes skeletal muscle differentiation [25]. Furthermore, overexpression of PIN1 through transfection with Ad-PIN1 blocked OM-induced odontogenic differentiations of HDPCs, which results were similar to that of previous report that overexpression of PIN1 in myeloid cells leads to block of granulocyte differentiation [14]. Furthermore, in this study, we assessed the effect of PIN1 inhibition or activation on adipogenic differentiation in HDPCs, and our results

FIG. 10. Effects of PIN1 inhibitor (juglone) and Ad-PIN1 on expression of master regulatory transcription factors for adipogenic differentiation in HDPCs. Time course expression of AM-induced transcriptional factors were examined by western blotting (A). Cells were pretreated with Ad-PIN1 for 5 h and post-treated with AM for 720 min or treated with 2 μ M juglone and AM for 720 min (B). Data are representative of three independent experiments.



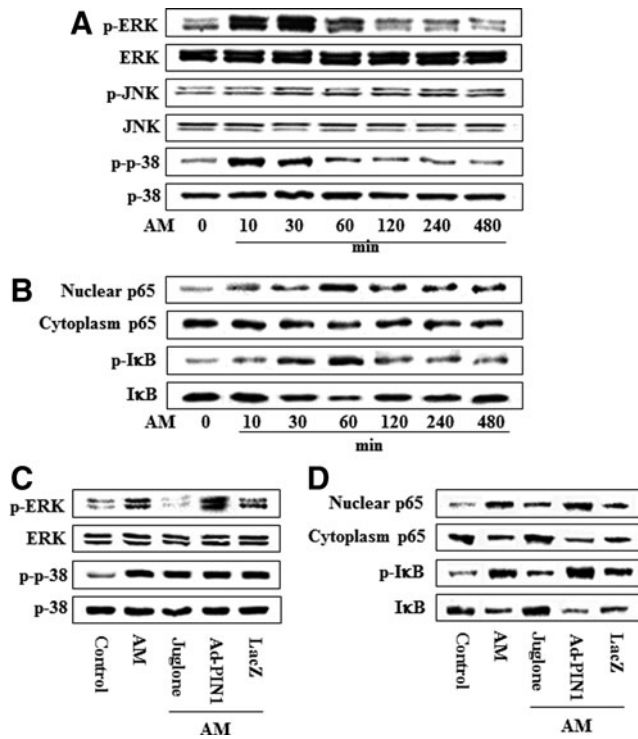


FIG. 11. Effects of PIN1 inhibitor (juglone) and Ad-PIN1 on MAPK and NF- κ B pathway protein levels during adipogenic differentiation in HDPCs. Time course expression of AM-induced MAPK (A) and NF- κ B (B) activation was examined by western blotting. Cells were pretreated with Ad-PIN1 for 5 h and post-treated with AM or 2 μ M juglone and AM (C, D) for 30 min (C) and 60 min (D). Data are representative of three independent experiments.

showed that PIN1 inhibitor juglone could inhibit adipogenic differentiation in HDPCs manifested by Oil Red O staining and RT-PCR for PPAR γ , AP2, and LPL. These results are consistent with the previous reports that adipose differentiation blocked by PIN1 siRNA in human preadipocytes [12]. In contrast, three transcription factors, PPAR γ , AP2, and LPL, involved in adipogenic differentiation [26] and lipid droplets were increased markedly in HDPCs treated with Ad-PIN1. We found that PIN1 inhibition decreased in adipocyte differentiation but increased in odontogenic differentiation of HDPCs. Overexpression of PIN1 in HDPCs enhanced adipogenic differentiation, but concomitantly suppressed odontogenic differentiation, indicating the role of PIN1 in regulating the balance between adipogenesis and odontogenesis of HDPCs.

To identify stem cell populations, it is necessary to understand the cell surface phenotype of each population. Recent studies have demonstrated that SSEA-4, an embryonic stem cell-associated antigen, can be used to identify mesenchymal stem cell (MSC) [27]. Furthermore, Kawanabe et al. [28] suggested that SSEA-4 is a specific cell surface antigen that can be used to identify DPSCs. STRO-1 is also thought to be a putative cell surface marker for the isolation of stem cells from both human and rat dental pulps [29]. Our data showed that the PIN1 inhibition increased the expression of SSEA-4 and STRO-1 with adipogenic differentiation but decreased

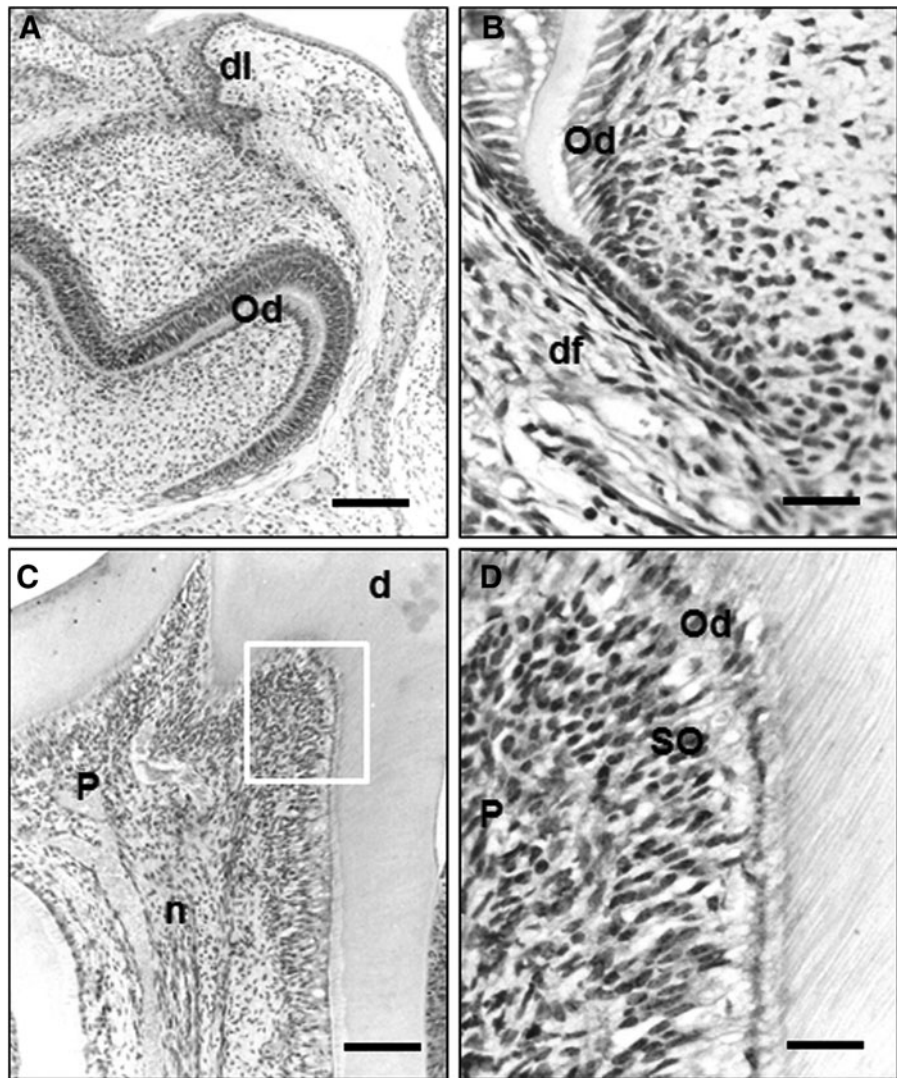
these markers with odontogenic differentiation. These results were similar to the previous study that the progression of MSCs precursor cell population toward a mature and functional osteoblastic phenotype correlates to the loss of STRO-1 expression [29]. In contrast, PIN1 overexpression has opposite effect on the stem cell markers during odontogenic or adipogenic differentiation in HDPCs. Further studies are needed to understand the physiological significance of these subpopulations and multilineage differentiation potential of HDPCs.

BMP signaling is initiated by receptor binding, propagated by the phosphorylation of the Smad1/5/8 complex, and finally translocated into the nucleus, resulting in the regulation of target gene transcription [30]. Smurf1 and 2 are negative regulators of both BMP and TGF- β signaling pathways [30]. Furthermore, the BMP pathway can be regulated by a negative feedback loop. Noggin is one of the osteoblast-secreted proteins that can limit BMP signaling through complexing with BMP, thereby preventing receptor binding [31]. In this study, we found that PIN1 inhibition by juglone suppressed Smurf1, but enhanced the expression of BMP-2 protein, and its downstream molecule Smad1/5/8 protein, suggesting that PIN1 inhibition may influence HDPC functions through the BMP pathway. This finding was further supported by the fact that noggin blocked OM-induced BMP-2 and its downstream molecules, and Ad-PIN1 reversed the effects of PIN1 inhibition on BMP pathways. Furthermore, PIN1 negatively regulates Smad signaling, by promoting proteasome-mediated degradation of Smad proteins, in MDA-MB-231, HT1080, and human embryonic kidney 293 cells [32].

Growing evidence demonstrates that Wnt signaling plays a critical role in development and stem cell self-renewal. There are currently 19 identified Wnt family proteins, divided into 2 main categories, canonical and noncanonical, based on their role in cytosolic β -catenin stabilization [33]. The canonical Wnt/ β -catenin signaling is another key pathway for regulating bone formation and remodeling and contribute osteoblastic differentiation [34]. In addition, canonical Wnt signaling negatively regulates the odontoblast-like differentiation of DPSCs [6]. In this study, expression level of Wnt ligands and β -catenin were enhanced in the presence of juglone but inhibited in the presence of Ad-PIN1. The application of negative regulator, DKK-1, also caused partial inhibition on the OM-induced Wnt/ β -catenin signaling. Therefore, it is postulated that the canonical Wnt/ β -catenin and BMP signaling involved in PIN1 inhibits the odontogenesis in DPSCs.

TGF- β superfamily cytokines bind to type I and type II serine/threonine kinase receptors and transduce intracellular signals through Smad proteins [35]. In the present study, expression of TGF- β 1 ligands and receptors were up-regulated in OM-treated HDPCs, suggesting that endogenous TGF- β signaling is activated in HDPCs. However, PIN1 inhibition and overexpression did not affect OM-induced TGF- β pathway. Moreover, the inhibition of BMP (noggin), Wnt (DKK-1), and TGF- β (SB431542) pathway does not significantly alter the expression of PIN1 in mRNA or protein levels. Therefore, although PIN1 overexpression exerts anti-odontogenic effects in part by suppression of BMP and Wnt induction, these odontogenic pathways (including TGF- β) seem not to be related in PIN1 expression. This observation was in accordance with simultaneous

FIG. 12. Immunohistochemical localization of PIN1 in neonatal (A), root forming (B), and adult tooth stage (C). (A) In tooth germ of neonatal mice, PIN1 immunoreactivity was restricted in the epithelial cells of dental lamina and osteoblasts in alveolar bone surrounding tooth germ. (B) In developing tooth of 7-day-old mice, weak PIN1 immunoreactivities were observed in odontoblasts but not in undifferentiated cells of pulp. (C) In mandibular molar of 28-day-old mice, PIN1 immunoreactivities were localized in the odontoblasts and nerve fibers. (D) High magnified view of the boxed region of (C). PIN1 immunoreactivities were found in odontoblasts as well as cells in subodontoblast layer. Ab, alveolar bone; Od, odontoblasts; P, dental pulp; d, dentin; df, dental follicle; dl, dental lamina; n, nerve fibers. Scale bars: 100 μ m (A, C), 20 μ m (B, D).



decrease of PIN1 expression and increase of BMP, Wnt, and TGF- β during odontogenesis (Figs. 6–8).

Master regulatory transcription factors, PPAR γ 2, C/EBP α , C/EBP β , and C/EBP δ , are involved in adipose differentiation [36,37]. Several studies have demonstrated that PPAR γ 2 and C/EBP α co-regulate each other's expression. PPAR γ 2 is the ultimate key regulator of adipogenesis, and C/EBP α might play more of an accessory role for PPAR γ 2 by inducing and maintaining PPAR γ 2 expression [38]. In PIN1 KO mouse adipose tissues, gene expression of PPAR γ 2, C/EBP α , and C/EBP β was significantly suppressed [12]. Consistent with these results, our study showed that PIN1 inhibitor blocked the AM-induced activation of C/EBP α , C/EBP β , and PPAR γ , but PIN1 overexpression has opposite effects. These results suggested that PIN1 overexpression induced the differentiation of HDPCs into adipocytes via PPAR γ , C/EBP α , and C/EBP β transcriptional activity.

MAPK is a proline-directed serine/threonine kinase consisting of three-enzyme modules; its targets, inducing ERK, JNK, and p38 kinases, are important in cellular signal transduction pathways. NF- κ B signaling is associated with

bone metabolism and considered to be the important signal transduction pathway in osteoblasts differentiation [39]. The MAPK and NF- κ B pathways are also crucial for cell proliferation and differentiation in HDPCs [20–40,41]. In the present study, OM-induced activation, ERK, JNK, and NF- κ B, was enhanced by PIN1 inhibition but suppressed by PIN1 activation during odontogenic differentiation. These results are similar to the reports that the activation of ERK and p38 MAPK [42,43], as well as NF- κ B [17,20,21], is involved in osteoblastic or odontoblastic differentiation. Furthermore, treatment with PIN inhibitor blocked AM-induced ERK, JNK, and NF- κ B activation, but PIN1 overexpression reversed the MAPK and NF- κ B signaling during adipogenic differentiation.

PIN1 is tightly regulated at multiple levels, and its deregulation has an important role in a growing number of pathological conditions, notably cancer and Alzheimer's disease [44]. PIN1 is expressed in neurons but not glia in the adult brain [8,45]. Significantly more expression of PIN1 was found in the developmental brain stages than in the adult stage of mouse [11]. In the present study, PIN1 was found intensely expressed in odontoblasts and cells of

subodontoblast layer. Furthermore, PIN1 expression was higher in the adult mouse tooth stage than in the neonatal and root forming developmental stage. These observations suggest that PIN1 might be an important factor for odontoblastic differentiation in adult tooth development. Further studies will be needed to elucidate the role of PIN1 in neurogenic differentiation of HDPCs because positive PIN1 expression was noted in nerve fiber of adult mouse dental pulp tissue.

In conclusion, the present study is the first to report that PIN1 inhibition can promote odontogenic differentiation of HDPSCs through activating the BMP/Wnt/ β -catenin/ERK and JNK/NF- κ B pathway but inhibits adipogenesis through inhibition of the PPAR γ and C/EBP β , α /ERK/NF- κ B signaling pathway. In contrast, PIN1 overexpression promoted adipogenesis and, concomitantly, suppressed odontogenesis. Thus, PIN1 may be novel important modulator of HDPSCs differentiation, which can be useful in dental tissue regeneration and tissue engineering by its reciprocal effect on odontogenesis and adipogenesis. These data indicate that the ERK, JNK, and NF- κ B pathways are involved in the PIN1-mediated regulation of odontogenic and adipogenic differentiation in HDPCs.

Acknowledgments

This work was supported by Mid-career Researcher Program through National Research Foundation of Korea (NRF) grant funded by the Ministry of Education, Science and Technology (MEST) (no. 2012004117), and the National Research Foundation of Korea (NRF) grant funded by the Korea government (MSIP) (no. 2012R1A5A2051384).

Author Disclosure Statement

The authors have no conflict of interest to disclose.

References

- Sloan AJ and AJ Smith. (2007). Stem cells and the dental pulp: potential roles in dentine regeneration and repair. *Oral Dis* 13:151–157.
- Hwang YC, IN Hwang, WM Oh, JC Park and DS Lee. (2008). Influence of TGF-beta 1 on the expression of BSP, DSP, TGF-beta 1 receptor I and Smad proteins during reparative dentinogenesis. *J Mol Histol* 39:153–160.
- Papagerakis P, A Berdal, M Mesbah, M Peuchmaur and L Malaval. (2002). Investigation of osteocalcin, osteonectin, and dentin sialophosphoprotein in developing human teeth. *Bone* 30:377–385.
- Gronthos S, J Brahim, W Li, LW Fisher, N Cherman, A Boyde, P DenBesten, PG Robey and S Shi. (2002). Stem cell properties of human dental pulp stem cells. *J Dent Res* 81:531–535.
- Iohara K, L Zheng, M Ito, A Tomokiyo, K Matsushita and M Nakashima. (2006). Side population cells isolated from porcine dental pulp tissue with self-renewal and multipotency for dentinogenesis, chondrogenesis, adipogenesis, and neurogenesis. *Stem Cells* 24:2493–2503.
- Scheller EL, J Chang and CY Wang. (2008). Wnt/ β -catenin inhibits dental pulp stem cell differentiation. *J Dent Res* 87:126–130.
- Lu KP, YC Liou and XZ Zhou. (2002). Pinning down proline-directed phosphorylation signaling. *Trends Cell Biol* 12:164–172.
- Lu KP and XZ Zhou. (2007). The prolyl isomerase PIN1: a pivotal new twist in phosphorylation signalling and disease. *Nat Rev Mol Cell Biol* 8:904–916.
- Ryo A, A Hirai, M Nishi, YC Liou, K Perrem and SC Lin. (2007). A suppressive role of the prolyl isomerase Pin1 in cellular apoptosis mediated by the death-associated protein Daxx. *J Biol Chem* 282:36671–36681.
- Esnault S, LA Rosenthal, ZJ Shen, JB Sedgwick, RJ Szakaly and RL Sorkness. (2007). A critical role for Pin1 in allergic pulmonary eosinophilia in rats. *J Allergy Clin Immunol* 120:1082–1088.
- Nakamura K, I Kosugi, DY Lee, A Hafner, DA Sinclair, A Ryo and KP Lu. (2012). Prolyl isomerase Pin1 regulates neuronal differentiation via β -catenin. *Mol Cell Biol* 32:2966–2978.
- Nakatsu Y, H Sakoda, A Kushiya, J Zhang, H Ono, M Fujishiro, T Kikuchi, T Fukushima, M Yoneda, et al. (2011). Peptidyl-prolyl cis/trans isomerase NIMA-interacting 1 associates with insulin receptor substrate-1 and enhances insulin actions and adipogenesis. *J Biol Chem* 286:20812–20822.
- Uchida T, K Furumai, T Fukuda, H Akiyama, M Takezawa, T Asano, F Fujimori and C Uchida. (2012). Prolyl isomerase Pin1 regulates mouse embryonic fibroblast differentiation into adipose cells. *PLoS One* 7:e31823.
- Pulikkan JA, V Dengler, AA Peer Zada, A Kawasaki, M Geletu, Z Pasalic, SK Bohlander, A Ryo, DG Tenen and G Behre. (2010). Elevated PIN1 expression by C/EBP α -p30 blocks C/EBP α -induced granulocytic differentiation through c-Jun in AML. *Leukemia* 24:914–923.
- Lee TH, A Tun-Kyi, R Shi, J Lim, C Soohoo, G Finn, M Balastik, L Pastorino, G Wulf, XZ Zhou and KP Lu. (2009). Essential role of Pin1 in the regulation of TRF1 stability and telomere maintenance. *Nat Cell Biol* 11:97–105.
- D'Alimonte I, E Nargi, F Mastrangelo, G Falco, P Lanuti, M Marchisio, S Miscia, I Robuffo, M Capogreco, et al. (2011). Vascular endothelial growth factor enhances in vitro proliferation and osteogenic differentiation of human dental pulp stem cells. *J Biol Regul Homeost* 25:57–69.
- Lee YM, SI Shin, KS Shin, TR Lee, BH Park and EC Kim. (2011). The role of sirtuin 1 in osteoblastic differentiation in human periodontal ligament cells. *J Periodontol Res* 46:712–721.
- Sekiya I, BL Larson, JT Vuoristo, JG Cui and DJ Prockop. (2003). Adipogenic differentiation of human adult stem cells form bone marrow stroma (MSCs). *J Bone Miner Res* 19:256–264.
- Bae KS, JB Park, HS Kim, DS Kim, DJ Park and SJ Kang. (2011). Neuron-like differentiation of bone marrow-derived mesenchymal stem cell. *Yonsei Med J* 52:401–412.
- Kim YS, KS Min, DH Jeong, JH Jang, HW Kim and EC Kim. (2010). Effects of fibroblast growth factor-2 on the expression and regulation of chemokines in human dental pulp cells. *J Endod* 36:1824–1830.
- Lee SI, DS Kim, HJ Lee, HJ Cha and EC Kim. (2013). The role of thymosin Beta 4 on odontogenic differentiation in human dental pulp cells. *PLoS One* 8:e61960.
- Kim SJ, KS Min, HW Ryu, HJ Lee and EC Kim. (2010). The role of heme oxygenase-1 in the proliferation and odontoblastic differentiation of human dental pulp cells. *J Endod* 36:1326–1331.
- Kim EC, HJ Lee and Y Kim. (2012). Lysyl oxidase and the Lysyl oxidase-like protein modulate odontoblastic differentiation of human dental pulp cells. *J Endod* 38:769–773.

24. Kim JJ, SJ Kim, YS Kim, SY Kim and SH Park. (2012). The role of SIRT1 on angiogenic and odontogenic potential in human dental pulp cells. *J Endod* 38:899–906.
25. Muruganandan S, AA Roman and CJ Sinal. (2009). Adipocyte differentiation of bone marrow-derived mesenchymal stem cells: cross talk with the osteoblastogenic program. *Cell Mol Life Sci* 66:236–253.
26. Hasegawa T, K Oizumi, Y Yoshiko, K Tanne, N Maeda and JE Aubin. (2008). The PPAR γ -selective ligand BRL-49653 differentially regulates the fate choices of rat calvaria versus rat bone marrow stromal cell populations. *BMC Dev Biol* 8:71.
27. Gang EJ, D Bosnakovski, CA Figueiredo, JW Visser, RC Perlingeiro. (2007). SSEA-4 identifies mesenchymal stem cells from bone marrow. *Blood* 109:1743–1751.
28. Kawanabe N, S Murata, H Fukushima, Y Ishihara, T Yanagita, E Yanagita, M Ono, H Kurosaka, H Kamioka, et al. (2012). Stage-specific embryonic antigen-4 identifies human dental pulp stem cells. *Exp Cell Res* 318:453–463.
29. Yu J, Y Wang, Z Deng, L Tang, Y Li, J Shi and Y Jin. (2007). Odontogenic capability: bone marrow stromal stem cells versus dental pulp stem cells. *Biol Cell* 99:465–474.
30. Miyazono K, S Maeda and T Imamura. (2005). BMP receptor signaling: transcriptional targets, regulation of signals, and signaling cross-talk. *Cytokine Growth Factor Rev* 16:251–263.
31. Wan DC, JH Pomerantz, LJ Brunet, JB Kim, YF Chou and BM Wu. (2007). Noggin suppression enhances in vitro osteogenesis and accelerates in vivo bone formation. *J Biol Chem* 282:26450–26459.
32. Nakano A, D Koinuma, K Miyazawa, T Uchida, M Saitoh, M Kawabata, J Hanai, H Akiyama, M Abe, et al. (2009). Pin1 down-regulates transforming growth factor- β (TGF- β) signaling by inducing degradation of Smad proteins. *J Biol Chem* 284:6109–6115.
33. Reya T and H Clevers. (2005). Wnt signalling in stem cells and cancer. *Nature* 434:843–850.
34. Holmen SL, CR Zylstra, A Mukherjee, RE Sigler, MC Faugere, ML Bouxsein, L Deng, TL Clemens and BO Williams. (2005). Essential role of beta-catenin in post natal bone acquisition. *J Biol Chem* 280:21162–21168.
35. Shi Y and J Massague. (2003). Mechanisms of TGF- β signaling from cell membrane to the nucleus. *Cell* 113: 685–700.
36. Ahdjoudj S, F Lasmoles, BO Oyajobi, A Lomri, P Delannoy and PJ Marie. (2001). Reciprocal control of osteoblast/chondroblast and osteoblast/adipocyte differentiation of multipotential clonal human marrow stromal F/STRO-1(+) cells. *J Cell Biochem* 81:23–38.
37. Meunier P, J Aaron, C Edouard and G Vignon. (1971). Osteoporosis and the replacement of cell populations of the marrow by adipose tissue. A quantitative study of 84 iliac bone biopsies. *Clin Orthop* 80:147–154.
38. Camp HS, D Ren and T Leff. (2002). Adipogenesis and fat-cell function in obesity and diabetes. *Trends Mol Med* 8:442–447.
39. Ryu B, ZJ Qian and SK Kim. (2010). Purification of a peptide from seahorse, that inhibits TPA-induced MMP, iNOS and COX-2 expression through MAPK and NF- κ B activation, and induces human osteoblastic and chondrocytic differentiation. *Chem Biol Interact* 184:413–422.
40. Lee SY, SY Kim, SH Park, JJ Kim, JH Jang and EC Kim. (2012). Effects of recombinant dentin sialoprotein in dental pulp cells. *J Dent Res* 91:407–412.
41. Lee SK, CY Lee, YA Kook, SK Lee and EC Kim. (2010). Mechanical stress promotes odontoblastic differentiation via the heme oxygenase-1 pathway in human dental pulp cell line. *Life Sci* 86:107–114.
42. Tang CH, RS Yang, MY Chien, CC Chen and WM Fu. (2008). Enhancement of bone morphogenetic protein-2 expression and bone formation by coumarin derivatives via p38 and ERK-dependent pathway in osteoblasts. *Eur J Pharmacol* 579:40–49.
43. Takami M, ES Cho, SY Lee, R Kamijo and M Yim. (2005). Phosphodiesterase inhibitors stimulate osteoclast formation via TRANCE/RANKL expression in osteoblasts: possible involvement of ERK and p38 MAPK pathways. *FEBS Lett* 579:832–838.
44. Yeh ES and AR Means. (2007). PIN1, the cell cycle and cancer. *Nat Rev Cancer* 7:381–388.
45. Liou YC, A Sun, A Ryo, XZ Zhou, ZX Yu, HK Huang, T Uchida, R Bronson, G Bing, et al. (2003). Role of the prolyl isomerase Pin1 in protecting against age-dependent neurodegeneration. *Nature* 424:556–561.

Address correspondence to:

Dr. Eun-Cheol Kim

Department of Maxillofacial Tissue Regeneration

Research Center for Tooth

and Periodontal Regeneration (MRC)

School of Dentistry

Kyung Hee University

1 Heogi-Dong Dongdaemoon-Gu

Seoul 130-701

Republic of Korea

E-mail: eckim@khu.ac.kr

Dr. Sang-Hyuk Park

Department of Conservative Dentistry

School of Dentistry

Kyung Hee University

1 Heogi-Dong Dongdaemoon-Gu

Seoul 130-701

Republic of Korea

E-mail: shpark94@khu.ac.kr

Received for publication July 24, 2013

Accepted after revision November 11, 2013

Prepublished on Liebert Instant Online November 12, 2013