

# Zebrafish sex: a complicated affair

Woei Chang Liew and László Orbán

Advance Access publication date 21 October 2013

## Abstract

In this review, we provide a detailed overview of studies on the elusive sex determination (SD) and gonad differentiation mechanisms of zebrafish (*Danio rerio*). We show that the data obtained from most studies are compatible with polygenic sex determination (PSD), where the decision is made by the allelic combinations of several loci. These loci are typically dispersed throughout the genome, but in some teleost species a few of them might be located on a preferential pair of (sex) chromosomes. The PSD system has a much higher level of variation of SD genotypes both at the level of gametes and the sexual genotype of individuals, than that of the chromosomal sex determination systems. The early sexual development of zebrafish males is a complicated process, as they first develop a 'juvenile ovary', that later undergoes a transformation to give way to a testis. To date, three major developmental pathways were shown to be involved with gonad differentiation through the modulation of programmed cell death. In our opinion, there are more pathways participating in the regulation of zebrafish gonad differentiation/transformation. Introduction of additional powerful large-scale genomic approaches into the analysis of zebrafish reproduction will result in further deepening of our knowledge as well as identification of additional pathways and genes associated with these processes in the near future.

**Keywords:** polygenic sex determination; sex chromosome; gonad differentiation; teleost; fish; *Danio rerio*

## ZEBRAFISH SEX: LOTS OF QUESTIONS AND ONLY A FEW ANSWERS

Teleosts (ray-finned fishes) form the largest group of extant vertebrates with more species than the rest of the other vertebrates combined [1]. The rich diversity of teleosts is observed not only in their phenotypes and behavior (review: [2]), but also in the varieties of their reproductive processes that seem to utilize all known sex determination (SD) mechanisms described for other vertebrates (see reviews [3, 4]). It is believed that the common ancestor of teleosts diverged from that of land vertebrates about 410 million years ago (Mya), well before the split of placental mammals from the latter lineage (ca. 180 Mya) [5]. Therefore, it is not surprising that the evolution of sex determination systems between teleosts and the well-studied mammals show substantial differences. The diversity of

reproductive systems in teleosts allows them to contribute to comparative studies on the evolution of SD mechanisms.

One of the most popular model organisms among teleosts is the zebrafish (*Danio rerio*). Natural habitats of the zebrafish stretch from South Asia (e.g. Pakistan, Nepal and India) to Southeast Asia (e.g. Myanmar) [6]. This small-bodied freshwater species is most commonly found in slow or stagnant waters, such as rivers, ponds and paddy fields [6, 7]. The ambient water temperature at these natural habitats typically ranges from 26–32°C [7].

Among the reasons that make zebrafish a popular laboratory model is its short generation time. In the laboratory, zebrafish reach reproductive maturity at around 3–4 months. Despite its relatively small size, the species is quite fecund: mature females kept under ideal conditions often produce 200–300 eggs regularly on a weekly basis. However, offspring sex

Corresponding author. László Orbán, Reproductive Genomics Group, Temasek Life Sciences Laboratory, Singapore. Tel: +65-6872-7413; Fax: +65-6872-7007; E-mail: laszlo@tll.org.sg

**Woei Chang Liew** is a PhD candidate at the Orbán group at TLL. His research interest is in sexual development of teleosts and other vertebrates with special focus on the area of sex determination.

**László Orbán** has been educated in Hungary and in the USA. He has been studying (zebra)fish reproduction for over 20 years. Currently, he is a group leader at Temasek Life Sciences Laboratory (TLL, Singapore).

ratios can vary over a wide range, including extreme male or female bias. Experiments that require a certain sex ratio necessitate the identification of specific breeding pairs that have been tested earlier and were shown to produce the desired proportion of males/females in their offspring. The identification, maintenance and regular breeding of these pairs could be a time-consuming task.

Although many reviews have been published on SD and gonad differentiation of teleosts (see, e.g. [3, 4, 8–19]), those focusing on zebrafish sex have been few and far between until very recently [11, 20–22]. Over the past few decades, there have been conflicting reports on the mode of SD in zebrafish; some of them predicted genetic mechanisms [23–26], whereas others pointed toward environmental clues [27, 28]. According to our knowledge, ours is the first review that provides a detailed overview on studies spanning nearly four decades in order to improve our knowledge on the elusive SD and gonad differentiation mechanism of zebrafish.

## ZEBRAFISH SEX IS DETERMINED PRIMARILY BY GENETIC FACTORS AND NOT ENVIRONMENTAL ONES

In vertebrates, sex is determined either by genetic mechanisms (genetic sex determination or GSD; reviews: [3, 18, 29]) or by the environment (environmental sex determination or ESD; reviews: [3, 4, 8, 12, 15, 30]). Although SD has only been analyzed in a small subset of the 32 000 fish species (reviews: [3, 15]), there are plenty of examples for species with GSD (e.g. Japanese medaka [31], threespine stickleback [32] and Patagonian pejerrey [33]) and ESD (e.g. American eel [34] and bluehead wrasse [35]). In some teleosts, SD (or gonad differentiation) can be overridden by environmental effects, most often temperature (thermal effect (TE) on GSD; review: [36]).

In GSD, the sex of an individual is determined primarily by genes/chromosomes inherited from the parents. There are two major forms of GSD: (i) SD by a single sex chromosomal pair or chromosomal sex determination (CSD) and (ii) SD by several (i.e. more than one) genetic factors or polygenic (multi-genic) sex determination (PSD). In our opinion, the latter includes those with multiple sex chromosome types (e.g. several Lake Malawi cichlid species [37]), weak sex chromosomes easily and often overridden by autosomal modifiers (e.g. X/Y+A or ZW+A according to Devlin and Nagahama [3]) and those

regulated by several autosomal loci without any sign of sex chromosomes (e.g. European seabass [38]).

To find out whether zebrafish uses GSD or not, we conducted several experiments [26]. Repeated mating of the same breeding pairs yielded offspring groups with very similar sex ratios, even when they were reared in uncontrolled environmental conditions (i.e. variations were expected in rearing density, amount of feed and ambient water temperature [26]). We also performed a selective breeding experiment, whereby factorial crosses were made with four to six siblings in every generation and brooders for the new generation were chosen from the family that produced the highest bias toward the required direction. With this approach, we generated families with severely biased sex ratios within a short period of time (three to four generations), especially toward male excess [26].

Strong influence of parental genotype on the sex of zebrafish offspring was also described by Abozaid *et al.* [39, 40]. They observed that offspring from gynogenetic males showed stronger effect of heat-induced masculinization than progenies sired by wild-type males. In addition, they also found that progeny sex ratios from the same breeding pairs were highly reproducible [39].

As indicated by its name, ESD is dependent on a signal from the surrounding environment to determine the gonadal fate (i.e. testis or ovary) of an organism (review: [41]). Species utilizing ESD do not have sexual dimorphism at the genomic level. The most common type of ESD mechanism studied is temperature-dependent SD, in which sex is a function of the ambient temperature during early development. This mode of SD is quite common among reptiles [42, 43], but it has only been shown to exist in a few teleost species (review: [36]). Although several environmental factors, including dissolved oxygen [44] and growth rate [27] have been found to influence sex ratio of zebrafish, the effect of temperature on sex was studied most extensively [39, 40, 45, 46]. Studies on various teleost species, including zebrafish, showed that elevated water temperature affected different gonadal processes, including apoptosis, estrogen biosynthesis and germ cell meiosis [45, 47, 48]. When zebrafish juveniles were subjected to high water temperatures during the period of gonad transformation and differentiation, oocyte apoptosis and decreased activity of gonadal aromatase were observed, resulting in increased male bias at adulthood [45]. In European seabass (*Dicentrarchus labrax*),

high temperature caused increased DNA methylation of the aromatase promoter, resulting in decreased expression and male-biased sex ratio [47]. Apparently, masculinizing effect of high temperature is not restricted to the gonad differentiation period in zebrafish, as families exposed to increased temperature during larval stage (5–42 h postfertilization) also produced significantly more males [39]. Interestingly, in the latter experiment some families tended to be more sensitive to heat-induced masculinization than others [40]. This showed that interaction between genotype and the environment exists in zebrafish.

All in all, the above studies showed that zebrafish sexual development could be affected by various environmental factors. However, none of the environmental factors exerted a strong effect on sex within their natural range, and some of them seemed to be largely dependent on the fish genotype. These data argue against zebrafish being a true ESD species, further supporting the earlier conclusion by Piferrer's group that this is a TE on GSD species [36].

### ZEBRAFISH SEX IS DETERMINED BY MULTIPLE LOCI (WITH OR WITHOUT SEX CHROMOSOMES)

In the best known form of SD that is found in mammals and avians as well as many other vertebrate species, including some teleosts, there is a so-called 'master switch' that typically resides on a special chromosomal pair, the well-differentiated sex chromosomes [9, 49, 50]. If the 'master switch' is on the 'heterogametic' member of the sex chromosomal pair that is present in only one of the two sexes (male-specific Y or female-specific W), then it will initiate the biological programs in representatives of that sex only. On the other hand, if the 'master switch' is located on the 'homogametic sex chromosome' that is present in both sexes, then the outcome will be determined by a dosage-based mechanism (e.g. *Drosophila melanogaster* [51]). In addition to the classical, well-differentiated sex chromosomes, there are vertebrate species with undifferentiated sex chromosomal pairs, where both the so-called proto-X and proto-Y might contain the master switch, but in a different allelic form (e.g. *Takifugu rubripes* [52]). In this review, we will summarize the results of over two dozen studies—performed with several different methods—that have been

conducted for the identification of sex chromosomes in zebrafish.

The traditional method for identification of sex chromosomes is detection of a heteromorphic chromosomal pair in one of the two sexes through karyotyping. Highly differentiated sex chromosomes (e.g. most mammalian ones) are easily distinguished cytogenetically due to their distinct size difference (heteromorphism) caused by suppression of recombination and degeneration of the heterogametic sex chromosome (reviews: [53–55]). Search for a heteromorphic chromosomal pair in zebrafish started nearly half a century ago when its karyotype was described [56]. Since then there were a number of publications on zebrafish karyotypes, the majority of them did not observe any size dimorphic chromosomal pair [56–65], but see potential indications for a ZW/ZZ system [66, 67]. It must be noted here that pairing of the zebrafish chromosomes on karyotypes is difficult due to their monomorphic nature, whereas the usage of different stains resulted in different chromosome banding patterns [63], making cross-validation of the results from different experiments challenging. Arkhipchuk [68] found differentiated sex chromosomes in about 10% of the ca. 2000 teleost karyotypes he reviewed. As species with undifferentiated sex chromosomes containing a short nonrecombining region (i.e. proto-X/proto-Y) is not cytogenetically recognizable, the exact proportion of teleost species with sex chromosomes might be larger.

Comparative analysis of meiotic recombination rates in males versus females can also be used to detect sex chromosomal systems. Species with heterogametic sex chromosomal pairs usually display different recombination rate that is sex-specific due to suppression of recombination between the pair of sex chromosomes [69]. Using genetic mapping approach, the Postlethwait's lab compared the recombination rate between a double-haploid zebrafish male [70] and female [71, 72]. They reported that the male androgenetic map had lower recombination rate relative to the female gynogenetic map [70]. Later, they also confirmed these results in normal (wild-type) zebrafish [25]. However, it was also suggested that the lower recombination rate observed in male zebrafish is most likely due to lesser numbers of *human mutL homolog 1* (Mlh1) foci in male genome and not because of recombination suppression [73]. The latter observation was supported by data obtained through synaptonemal complex karyotyping [74, 75], which did not find any

difference between the two sexes. These results led to the conclusion that zebrafish is unlikely to have a pair of highly differentiated sex chromosomes.

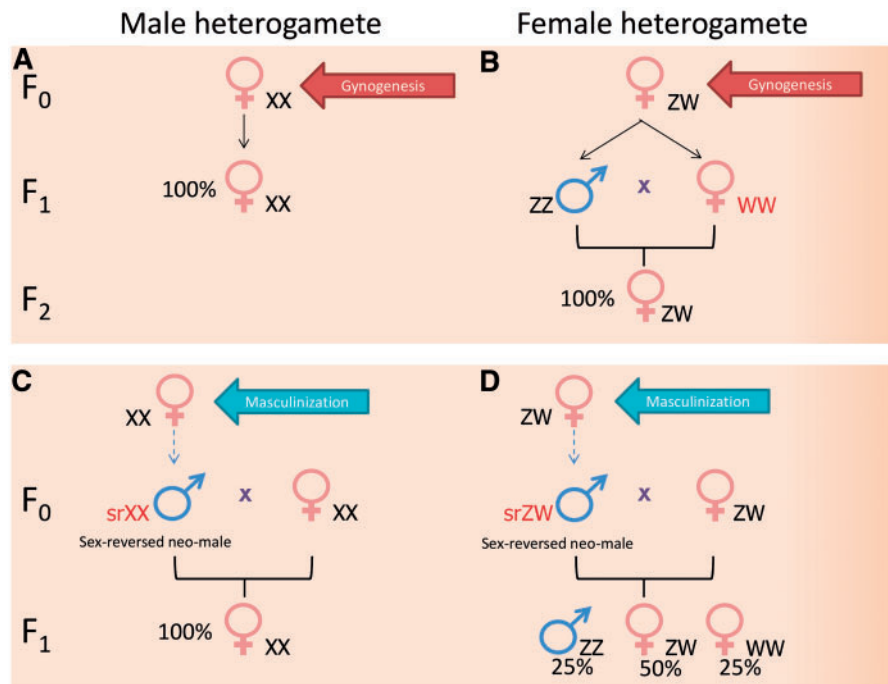
Whole genome manipulation (or induced parthenogenesis) techniques are also used for identification of species with CSD (reviews: [76–80]). The approach is based on the exclusion of the paternal or maternal genome from the inheritance by irradiation of sperm or egg, followed by inhibition of first cell division. This will result in duplication of the remaining haploid genome, hence the name double haploids. Double haploids generated by the exclusion of paternal genome are called gynogenotes, whereas those generated by the elimination of maternal genome are named androgenotes. In the presence of a pair of differentiated sex chromosomes, double haploids have equal chances to inherit either of them. For species that are male heterogametic (XY), the expected sex ratio of  $F_1$  double haploids from gynogenesis would be 100% females (Figure 1A). On the other hand, for female heterogametic species (ZW),  $F_1$  gynogenotes are expected to have a 1:1 male to female phenotypic sex ratio (Figure 1B), assuming full survival of  $F_1$  with WW sex chromosomal set that does not occur in nature. Crossing of WW female with a normal male (ZZ) should produce an all-female progeny (Figure 1B). The reverse is true for androgenesis, whereby  $F_1$  double haploids from male heterogametic species should have an equal proportion of males and females (again, assuming full survival of YY males), while female heterogametic species should produce 100% male androgenotes. For this review, we collated data from four sets of zebrafish gynogenesis experiments [81–84] and one androgenesis experiment [28]. The number of double haploids obtained per experiment ranged from 5 to 146 and sex ratio showed high variation from 0% to 95% females (summary of data available in Table 1). Some of these data seem to be incompatible with the XX/XY sex chromosomal system, others with the ZZ/ZW system, whereas the rest do not seem to fit either of the two options. Taken together, they seem to argue against the presence of a strong sex chromosomal system with primary effect on SD in zebrafish.

The third experimental technique used for detecting the presence of sex chromosomes is based on analyzing sex ratios of offspring produced by crossing sex-reversed individuals with wild-type partners (review: [3, 85]). In an XX/XY species,

when sex-reversed (srXX) neo males produced by masculinization of genetic females are crossed with wild-type females, a monosex female offspring is expected (Figure 1C). However, in ZW/ZZ species, the proportion of females in the progeny of srZW  $\times$  ZW cross is expected to be between 75% and 50% (Figure 1D), depending on the relative survival rate of the WW individuals compared with ZW. When neo females generated by feminization of genetic males are crossed with wild-type males, the expected sex ratios are: 25–33% females for XX/XY (depending on the survival of the YYs) and 100% males for ZZ/ZW.

Over the years, numerous experiments were performed to achieve hormonal sex reversal of zebrafish (a set of examples available in Table 1 of [21]). However, according to our knowledge, most of them did not report on the offspring sex ratio produced by sex-reversed neo males or females. We only managed to find a single study that successfully masculinized zebrafish by hormone treatment and identified ‘super females’ among the resulting  $F_1$  fish [23]. When these ‘super females’ were crossed with normal males, severely female-biased (90–98%) offspring was produced. This led them to suggest that zebrafish has a ‘female dominance chromosomal-based SD mechanism’. In our view, this proposed mechanism is identical to the female heterogametic system (ZW/ZZ) that has been found to be incompatible with zebrafish SD based on data obtained earlier by several genome manipulation experiments (Table 1). Unfortunately, there is no indication in the publication whether the authors have attempted to identify the proposed sex chromosomes (or any of their markers).

As described earlier, masculinization of zebrafish can also be achieved by high temperature applied during the gonadal transformation window ([39, 40, 45]; review: [36]). In an experiment conducted by Abozaid *et al.* [40],  $F_1$  neo males produced by heat treatment were backcrossed to their mother (normal female) for offspring sex ratio analysis. The  $F_1$  generation had an average of 16% males, which had a notable difference from the expected sex ratio for both a male heterogametic (expected: no males) and female heterogametic (expected: 50% males) systems. Surprisingly, the  $F_2$  progenies had sex ratios very similar to the expected value of a female heterogametic sex system. However, as the  $F_1$  progeny sex ratio could not be explained by either of the two sex chromosomal systems, the authors concluded



**Figure 1:** Inferring the type of sex chromosomal system by progeny sex ratio as a result of genome manipulation or artificial sex reversal. **(A)** Performing gynogenesis on male heterogametic species will produce an all-female (XX)  $F_1$  offspring. **(B)** For the female heterogametic species (assuming full viability of all genotypes), gynogenesis will produce  $F_1$  progeny with about 1:1 sex ratio and all  $F_1$  females will have WW sex chromosomes. [In case of WW lethality, an all-male (ZZ)  $F_1$  offspring will be produced, whereas partial survival of WWs will yield intermediate results]. When  $F_1$  females (WW) are crossed with normal males (ZZ), their  $F_2$  offspring will be all female (ZW). **(C)** When hormone- or temperature-based masculinization is performed in a male heterogametic species, crossing of sex-reversed neo-males (srXX) with normal females will produce all-female  $F_1$  offspring. **(D)** For female heterogametic species (assuming full viability of all genotypes), the expected phenotypic sex ratio in the  $F_1$  progeny, from crossing the sex-reversed neo-male (srZW) with normal female (ZW), will be 25% males and 75% females. Among the  $F_1$  females, one-third of them will have WW sex chromosomal pair that does not normally occur in nature and yield an all-female offspring when crossed with a normal male (ZZ). (If WWs showed lethality, then 33% ZZ males and 67% ZW females will be expected, whereas their partial survival will yield intermediate results).

**Table 1:** Data from induced parthenogenesis experiments on zebrafish yield sex ratios incompatible with one or both sex chromosomal systems

Double haploid	Strain	Number of double haploid	Observed sex ratio (percent female)	Type of sex chromosome excluded	Remark	Reference
Gynogenotes	Wild	8	0	XX/XY	If ZW/ZZ, then WWs are inviable	[81]
Gynogenotes	Golden	8	0	XX/XY	If ZW/ZZ, then WWs are inviable	[81]
Gynogenotes	gol-mix	15	<20	both	Per family sex ratios cover the range from <20% to >80%	[82]
Gynogenotes	gol-mix	146	<20	both	Per family sex ratios cover the range from <20% to >80%	[82]
Gynogenotes	gol-FLI	28	92	both	Per family sex ratios cover the range from <20% to >80%	[82]
Gynogenotes	C29	85	95	ZW/ZZ	If XX/XY, then YY viability is high	[83]
Gynogenotes	Unknown	Unknown	6	XX/XY	If ZW/ZZ, the viability of WWs is very low	[84]
Androgenotes	AB	5	0	both	Sex ratio of progeny is highly skewed in some families	[28]

that at least two or more autosomal factors might be involved in zebrafish SD further strengthening indications against the compatibility of zebrafish SD with a simple sex chromosomal system.

The most direct way to search for sex chromosomes is to look for genomic differences between the male and female genomes. Polymerase chain reaction (PCR)-based methods such as random amplified polymorphic DNA (RAPD) [86] and amplified fragment length polymorphism (AFLP) [87] are the most popular molecular methods for isolation of sex markers, but other procedures have also been used [88]. Information obtained from sex markers can be used to identify the type of GSD mechanism the organism is utilizing (review: [89]). We screened through the zebrafish genome using our improved PCR-based assay method, called fluorescent Motif Enhanced Polymorphism (fluoMEP), which combined the simplicity of RAPD and the higher throughput of AFLP [90]. Using fluoMEP, we managed to isolate male-specific sex markers from two fish species known to have sex chromosomes, i.e. guppy (*Poecilia reticulata*) and rosy barb (*Puntius conchotinus*) [26, 91–94]. However, we could not find any universal sex marker after detailed comparative analysis of the zebrafish males and females genomes in two strains (AB and wild-type) using the same method [26]. This is likely due to the fact that there are no universal major structural differences between the chromosomal sets of the zebrafish sexes in these two strains.

The availability of the whole zebrafish genomic sequence [95, 96] has enabled the use of higher resolution genomic tools to search for sex chromosomes. One such technique is array comparative genomic hybridization (aCGH), which screens the whole genome at regular intervals for copy number variable regions (CNVRs) between two different samples [97, 98] and was recently used to study genetic diversity of different zebrafish strains [99]. In a well-differentiated sex chromosomal system, the SD region should be unique to the heterogametic sex chromosome. As a consequence, it should show different copy numbers between the two sexes; hence, it is possible to search for such sex chromosomes using aCGH. To screen through the zebrafish genome at higher resolution than fluoMEP, we custom-designed an aCGH oligonucleotide microarray that can detect CNVRs longer than 50 kb. Two strains of zebrafish (AB and Singapore-based wild-type) were screened using the custom-designed aCGH array. No universal

sex-linked CNVR was detected from the two pairs of zebrafish families tested [26]. These data and the fluoMEP results further strengthen the notion that there are no substantial differences between the zebrafish sexes that would be uniform for every strain.

Genome-wide linkage analysis is another molecular technique that takes advantage of whole genome sequences. DNA markers are used to search for loci that show significant association with the trait of interest. For zebrafish, three labs had performed single-nucleotide polymorphism (SNP)-based genetic linkage mapping on F<sub>2</sub> generation for which the grandparents were derived from two different zebrafish strains, followed by full-sib crosses of the F<sub>1</sub> hybrids [24, 25, 95]. Altogether, five different regions on four chromosomes (i.e. chromosome 3, 4, 5 and 16) were identified (Table 2). Although all crosses involved an AB strain grandparent, none of the putative sex-associated regions were consistent between any two labs. The detection of five different sex-associated regions from three independent genome-wide studies indicates that zebrafish SD is a complex trait, where multiple autosomal factors and not just one pair of sex chromosome, if any, will instruct individuals to assume one of the two sexes. These data also indicate that there might be differences among the various zebrafish strains with regard to the gene sets that play a role in the SD mechanism.

The pathways involved in gonad differentiation are highly conserved among the vertebrates, with many of the genes having the same functions [15, 22, 100–104]. Candidate gene approach as well as large-scale comparative transcriptomic analysis (such as microarray), were used to identify potential master sex determining (MSD) genes. Such a gene is typically only carried by one of the sexes and the chromosome with MSD gene is the sex chromosome. Thus, mapping of genes with sexually dimorphic expression level onto the genome provides a means to detect sex chromosomes. Using this approach the MSD gene for Patagonian pejerrey (*Odontesthes hatcheri*) and rainbow trout (*Oncorhynchus mykiss*), *amhy* [33] and *sdY* [105], respectively, were identified and mapped to the Y chromosome. Zebrafish also shared many of the common candidate genes involved in gonad differentiation (refer to Table 2 of [21]). There were also several large-scale comparative transcriptomic studies performed between the zebrafish sexes and they identified many

**Table 2:** At least five sex-associated regions were identified in zebrafish strains by genome-wide studies

Cross-type <sup>a</sup>	Method	Marker density <sup>b</sup> (kb)	Chr	Chr location (Zv9)	Genetic interval	References
IN × AB	SNP typing	3.80	5	44 453 011–46 626 084	1.7 cM	[24]
IN × AB	SNP typing	3.80	16	12 952 287–16 952 809	3.5 cM	[24]
AB <sup>#</sup> × NA	SNP typing	357.38	4	60 837 953–62 094 675	>1 cM	[25]
NA × AB <sup>#</sup>	SNP typing	295.82	4	60 837 953–62 094 676	>1 cM	[25]
NA × AB <sup>#</sup>	SNP typing	295.82	3	15 234 176–29 193 306	5.8 cM	[25]
AB × Tu	SNP typing	13.62	16	~19–22 Mb	N/P	[95]
AB × AB; Toh × Toh	aCGH	15.74	N/A	N/A	N/A	[26]

Note: <sup>a</sup>For the first three studies [24, 25, 95], brooders from two different varieties were crossed (males shown first), then F<sub>1</sub> full-sib cross was performed to produce the F<sub>2</sub> mapping family. For the fourth study [26], two pairs of brooders each from two strains were crossed. The parents and four of their offspring from each cross were analyzed.

<sup>b</sup>Based on 1.714 Gb genome size (Gregory TR. Animal Genome Size Database. <http://www.genomesize.com>).

IN, wild-type from Northeast India; AB, AB stock; AB<sup>#</sup>, AB stocks derived from Streisinger's original AB line; NA, Nadia stocks originated from Indian wild-type from the Kolkata region; Tu, Tubingen line; Toh, a farm-derived strain from Singapore; N/P, not provided; N/A, not applicable.

genes showing sex dimorphic expression level [106–110]. However, no zebrafish chromosome has significant clustering of these genes and to date no primary SD switch with preferential role was identified. The identification of a MSD gene works most efficiently when the genetic sex of the fish species can be determined at larval stage. This is because the MSD gene might be expressed only during early developmental stages, like the expression of *amhy* in male Patagonian pejerrey is observed only up to 20 weeks after hatching [33]. Therefore, for an organism like the zebrafish that does not have distinct sexual dimorphism during the larvae stage, 'blind analysis' of a large number of samples collected at multiple time points from families with known sex ratios must be performed, making these experiments tedious and expensive.

## ZEBRAFISH SEX DETERMINATION IS POLYGENIC

The data reviewed so far on sex chromosome searches in zebrafish shows the following: (i) there is no cytogenetic evidence of heteromorphic chromosomal pair; (ii) the observed progeny sex ratios from various genome manipulation studies did not concur with those expected from a simple sex chromosome model; (iii) lack of substantial, universal differences between genomes of the two sexes in multiple strains and (iv) genome-wide linkage analysis identified multiple regions on different chromosomes associated with SD. All these results convincingly indicate: (i) high level of variability of the SD process among different zebrafish strains and (ii) the likely absence of strong, highly differentiated

sex chromosomes in all zebrafish varieties. At the same time, the reviewed data also point to strong influence of parental genotypes on progeny sex ratio. In such cases the most probable SD mechanism is PSD (reviews: [111–113]). (In our opinion, a weak sex chromosomal pair that is not present in every strain and unable to control sexual development of vast majority of individuals due to the action of multiple autosomal modifiers would not exclude zebrafish from this category). Due to the complexity of the mechanism, there are only a few publications on this system and in addition to zebrafish, currently only few fish species, including several Lake Malawi cichlid species [37], several tilapia species [114, 115], European seabass [38] and green swordtail [113], were reported to utilize this mode of SD.

According to Bull [111], the criteria for PSD systems are as follows: (i) wide range of progeny sex ratio among different families; (ii) strong influence from parental genotype and (iii) sex ratio response to selection. Our and other's data on zebrafish fulfilled all these three criteria. First, we observed huge differences in the progeny sex ratio (4.8–97.3% males) among 62 zebrafish families of various strains [26]. Second, at least two independent studies found strong parental genotype influence on the progeny sex ratio by performing repeated crossings of the same breeding pair [26] and crossing of gynogenetic males with different normal females [39, 40]. Finally, we were able to prove sex ratio response to selection by maintaining sex-biased zebrafish lines and decreased progeny sex ratio variation among families from the same line through selective breeding [26].

## HOW DOES PSD WORK AND WHICH GENES ARE INVOLVED?

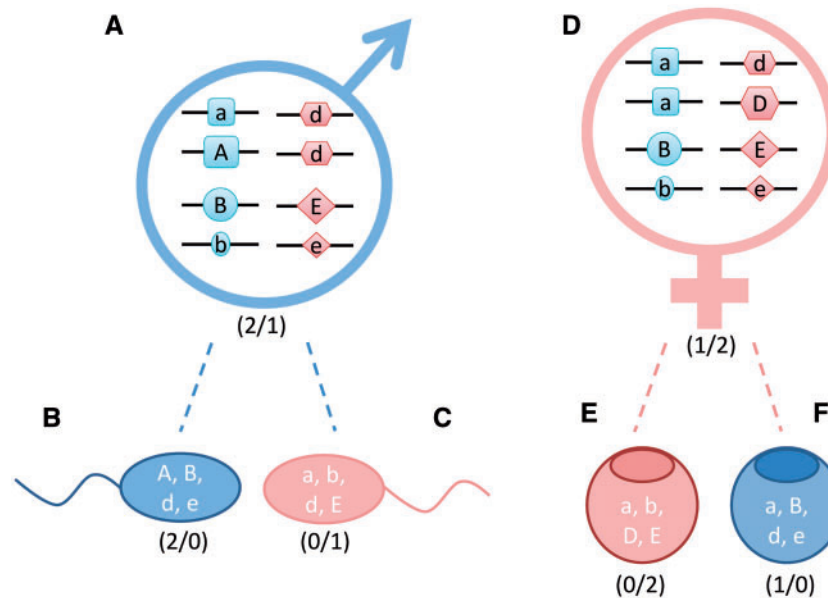
In a polygenic system, the sex of an individual is not determined by the presence or absence of a special chromosome. Instead, decision is made by the allelic combinations of loci, whose products are involved in the SD process (Figure 2). These loci are typically dispersed throughout the genome, but in some species a few of them might be located on a preferential pair of chromosomes. In other words, the presence of sex chromosomes, *per se*, should not exclude PSD.

The complexity of PSD system is the result of different allelic combinations with variable effect on gonad differentiation. Protein products of several genes located on different chromosomes are involved in SD with some having pro-female function while others promoting maleness. Different alleles of the same gene can have strong or weak effect. If we assigned a binary code to the allele effect (strong = 1

and weak = 0), then the sex of this PSD species could be predicted by simply comparing the sum of male to female alleles. Gonad differentiation would be directed to the sex with the highest proportion of strong alleles (more detailed explanation is available in Figure 2).

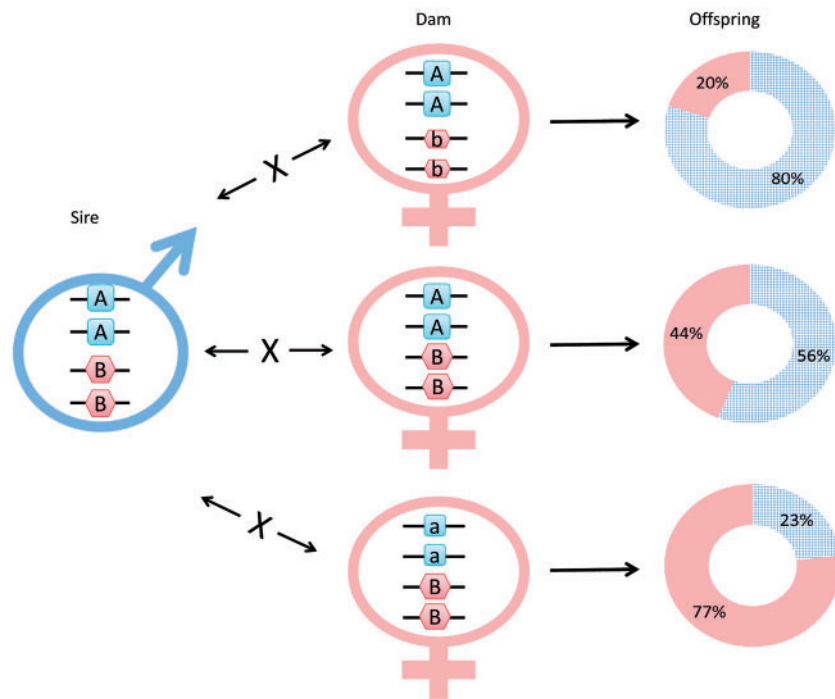
Needless to say, the maximum number of variations (i.e. allelic combinations) in the germ cells would drastically increase in parallel with increasing number of loci involved; for eight loci it would be 128 ( $2^7$ ), whereas for a dozen it would be 2056 ( $2^{11}$ ). These calculations exclude those females that are heterozygous for all loci, otherwise the numbers would be twice higher. This is in sharp contrast with CSD systems, where the total number of genetic varieties for the SD loci among the gametes is two.

One characteristic of the PSD system is that representatives of the two sexes show a much higher



**Figure 2:** A simplified mechanistic model for a PSD system based on the involvement of four autosomal genes. In this theoretical PSD system, protein products of four genomic loci determine sex. Two of the protein products perform a function that pushes the gonad toward femaleness D and E loci, while the remaining two are proteins with pro-male function A and B loci. For simplicity, it is assumed that (i) for every locus there is a strong (larger shape and upper case letter) and weak (smaller shape and lower case letter) effect allele; (ii) the effect of the four strong alleles are equal and the same is true for the four weak alleles at a lower level and (iii) the four products do not exert any direct effect on the functions of each other. If we assign a binary code to the alleles (strong—1 and weak—0), then the outcome could be predicted by simply comparing the sum of male and female alleles (assuming that in case of a tie the individual would continue to develop into a female). In this system, a weak male that has two strong male alleles and one strong female allele (A) could produce sperm cells of different sexual genotypes [see (B) and (C) for examples], among them some that would have excess of pro-female alleles [see (C)]. Similarly, a weak female with one strong male and two strong female alleles (D) could also produce oocytes with excess strong female alleles (E) or more strong male alleles (F). Symbols with different shapes label genes located on four different autosomes. Ratios of strong male to strong female alleles are indicated in brackets.





**Figure 3:** The combination of parental ‘SD allele sets’ have a profound effect on the sex ratio of the offspring. Using bigenic genotyping data from the offspring groups analyzed by Bradley *et al.* (Supplementary Table 4 of [24]), we have created imaginary crosses using one male genotype with three different female genotypes. The parental genotypes were chosen in such a way that they could only produce a single genotype per cross that was among those detected by the authors. Wide range of sex ratios obtained and two opposite sexes with the same SD genotype both indicate a higher level of complexity than what could be explained by participation of just two loci in the SD process. On the pie charts, checkered background indicates males, and solid background indicates females.

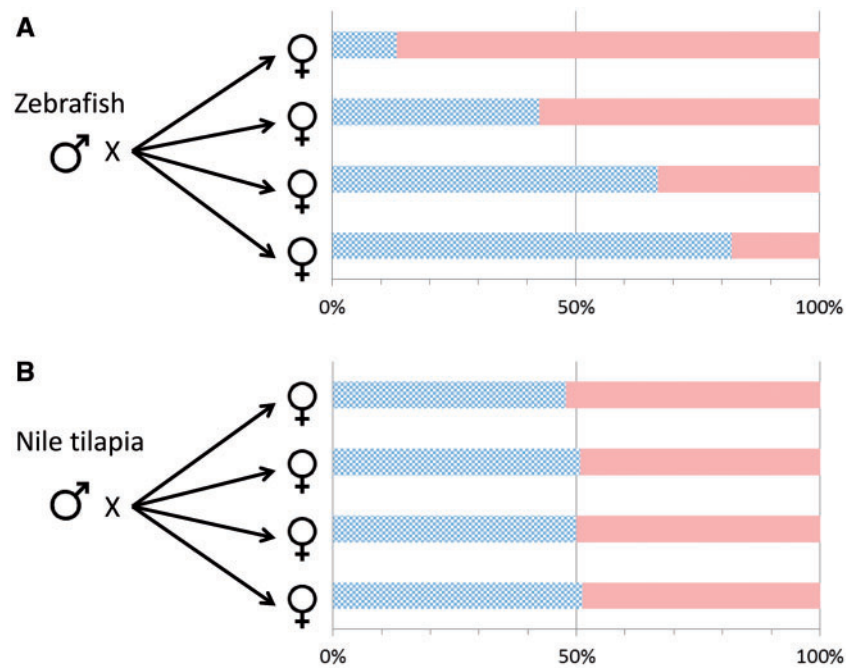
level of variation than that in CSD systems. This variation is then passed over to the next generation in the form of highly variable offspring sex ratios among different combinations of parental pairs. When the same zebrafish male is crossed with three different females, sex ratios of the resulting families spread over a surprisingly wide range (Figure 3), providing additional indication that only part of the complexity due to allelic diversity is observed here. Such a wide variation in the sex ratio of PSD species (Figure 4A) differs markedly from the narrow range observed in the four families produced by a CSD species (Figure 4B).

Unfortunately, it is still not known: (i) how many genes regulate PSD in zebrafish; (ii) what are these genes and (iii) how much, if any, is the overlap among these gene sets and those of other PSD species in vertebrates. Data obtained from the two genome-wide linkage studies mentioned above [24, 25] provided first set of indications toward the genomic regions that are likely to contain subset of these genes in zebrafish. They found genes with roles

in gonad differentiation (*dmrt1* and *fancg*) and sex hormone biosynthesis (*cyp21a2* and *hsd17b1*) to be closely located to the proposed SD regions [24, 25]. Another feature of PSD is the cumulative effect of multiple genes involved in SD. Different allelic combinations exerting variable effects further complicate the process. Experimental evidence for the cumulative effect of the allelic combinations was observed on sex-linked loci reported by Bradley and colleagues (see Supplementary Table 4 of [24]). Given the fact, that the two SD regions identified by them accounted for only 16% of the sex variance trait [24], we propose that there could be a large number of genes involved in zebrafish SD.

### MOLECULAR REGULATION OF GONAD DIFFERENTIATION IN ZEBRAFISH IS A COMPLEX PROCESS

The complexity of zebrafish gonad differentiation process was first reported by Takahashi [117], who



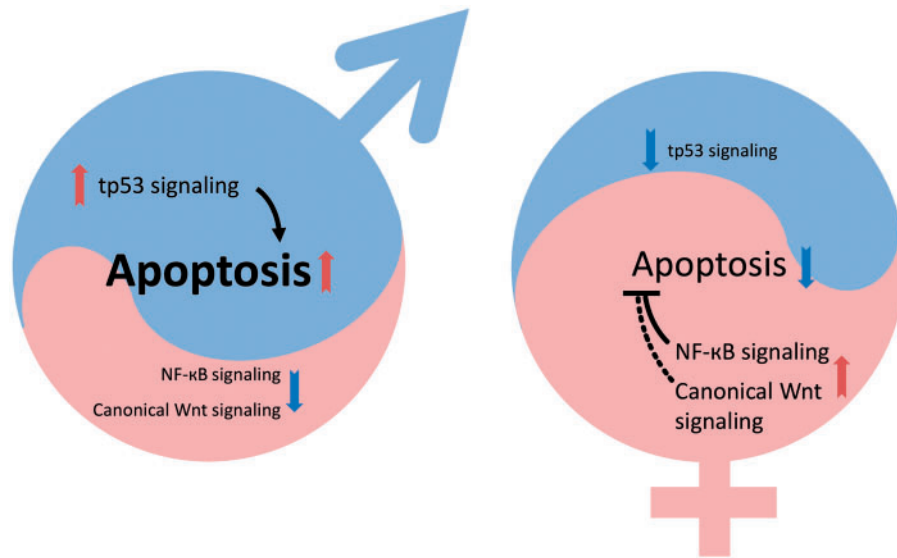
**Figure 4:** Offspring sex ratios show much higher level of variability for zebrafish (PSD) than Nile tilapia (CSD). (A) Crossing a single zebrafish male with four different female partners yielded offspring groups with very different sex ratios (13.1–81.8% males; data are from [26]). (B) Crossing a Nile tilapia male (XY) with four different female partners (XX) yielded offspring groups with very similar sex ratios (data are from [116]). Checkered bars indicate males, and solid bars indicate females.

pointed out that every individual starts to form an ovary (later it was named ‘juvenile ovary’) and future males later have to undergo a transformation before they can start to produce a testis. The ‘juvenile ovary’ is made up of mostly oogonia and primary oocytes [118]. First histological sign of ‘juvenile ovary’ phase can be observed from zebrafish as young as 2.5 weeks post-fertilization (wpf) to around 4 wpf [117, 118]. Likewise, the extent of ‘juvenile ovary’ phase was found to vary among individuals from a few days to more than a week [119]. Following the ‘juvenile ovary’ phase, the gonad either continues to develop into a functional ovary or undergoes a drastic transformation to form a testis (review: [21]).

The hallmark of this ‘juvenile ovary to testis’ transformation process is a rapid degeneration and eventual elimination of oocytes by an apoptotic (or programmed cell death) wave that was first described by Uchida and colleagues [84]. Although the primary signal that triggers the wave is still unknown, it is likely that it acts through a change of hormonal environment of the oocytes that result in increased ratio of male to female hormones. The number of primordial germ cells also seems to play a role in the transformation process: their complete or partial

depletion leads to testis development [120, 121]. In addition, germ cells are also important for maintenance of ovarian function in adults [122]. The development of transgenic zebrafish lines that showed differential reporter signals between the developing female (strong fluorescence) and male (weak fluorescence) gonads [123–125] has opened up new possibilities to analyze the underlying processes. The overall nature of gonad differentiation and transformation processes were described [21], the developmental time limits were determined [117, 118] and expression profiles of a few genes (e.g. *cyp19a1a*, *amh* and *cyp11c1*) have been analyzed [22, 126, 127].

The improvement of platforms, especially the broadening application of expression microarrays and characterization of mutants with relevant phenotypes (e.g. *fancl*<sup>*nlhg10aEt/nlhg10aEt*</sup> [128], *nanos3*<sup>*flh49/flh49*</sup> [129]), has allowed researchers to start looking for large-scale changes and study the involvement of major developmental pathways. Through the analysis of a zebrafish line with mutation in the *Fanconi anemia complementation group L* (*fancl*; NM\_212982) gene, the Postlethwait’s lab has obtained new information on the regulation of apoptotic processes during gonad transformation [130]. According to



**Figure 5:** Shift in the balance of pro-male and pro-female pathways will determine direction of gonad differentiation in zebrafish. Three major developmental pathways (Tp53-apoptosis, NF-κB and canonical Wnt) have been shown to participate in the process. The number of germ cells also has a profound effect on the final outcome (data not shown). In the males (left), numbers of primary oocytes originating from the ‘juvenile ovary’ are low, *tp53* is upregulated, apoptotic processes are fully active and the NF-κB as well as canonical Wnt signaling pathways are both downregulated. The hormonal balance is shifted toward maleness. In the females (right), the number of primary oocytes originating from the ‘juvenile ovary’ is high, the NF-κB pathway and canonical Wnt signaling pathways are both upregulated, whereas *tp53* is downregulated. Apoptosis is inhibited and the hormonal balance is shifted toward femaleness. The timing and causative effects of these processes are not fully understood.

their results, tumor protein 53 (Tp53; [131]) activates the apoptotic processes in the male gonads resulting in the removal of oocytes and thereby tilting the balance toward testicular differentiation [128].

The involvement of NF-κB (nuclear factor of kappa light polypeptide gene enhancer in B cells; [132]) pathway in zebrafish gonad differentiation was discovered recently. Juvenile zebrafish subjected to heat-killed bacteria showed a sharp increase in female bias at adulthood: transcriptomic analysis of the underlying processes identified the upregulation of NF-κB pathway through induced inflammation as the cause [133]. When the pathway was chemically inhibited, the resulting adult sex ratio shifted toward increased proportion of males [133].

We have performed a microarray-based transcriptomic analysis of developing gonads using the *Tg(vasa:vasa-EGFP)* line developed by Olsen lab [123]. The analysis of differentially expressed genes indicated potential involvement of canonical Wnt (or Wnt/beta-catenin) signaling pathway [134] that was shown earlier to play an important role in mammalian ovary formation and maintenance (reviews: [135, 136]). Subsequent downregulation of the

pathway through transgenic inhibition has resulted in a significant decrease of the proportion of males, providing functional proof for its importance in ovary formation [and possibly maintenance (Sreenivasan and Jiang, personal communication)].

To summarize the current status: one pro-male (Tp53-activated apoptosis) and two pro-female (NF-κB and canonical Wnt) pathways were found to be involved with gonad transformation and differentiation in zebrafish. Two of them (possibly all three) have an effect on apoptotic processes that control the fate of cell types in developing gonad. The shift of balance of these three pathways into one or the other direction will tilt the hormonal balance through the steroidogenic pathway and eventually push the development toward one of the two gonad types (Figure 5). As the involvement of additional pathways seems very likely, further studies will be needed to unravel all the details of this beautiful and complex process. We have preliminary data that seem to indicate that some environmental factors affecting zebrafish sex are also likely to act through altering some of these processes into one or the other direction.

## CONCLUDING REMARKS AND AN OUTLOOK TO THE FUTURE

Despite having a PSD system, the downstream cascade of sex differentiation in zebrafish is still likely to involve several pathways and genes that were shown earlier to play a role in other vertebrates (review: [20]). On the other hand, their role and position in the cascade might vary across the different vertebrate groups [137, 138].

A molecular event, which involves multiple autosomal genes, such as PSD, will require a complex network of regulations to ensure proper development. Additional regulatory mechanisms, involving DNA methylation, histone modification and noncoding RNAs, are likely to contribute to these processes. Recent data showed that epigenetic regulatory mechanisms contribute to SD and reproductive organ development in plants and animals (review: [139]). With advances in next generation sequencing and the improved zebrafish genome assembly [95, 96] concerted analysis of the transcriptome, genome, miRNome and gonadal methylome will soon become a routine tool helping us to uncover additional genes and pathways as well as their interactions. All this will lead to a more detailed understanding of these hitherto elusive ‘complicated affairs’.

### Key Points

- Zebrafish SD is genetic; environmental factors exert only secondary effects onto the sexual development of this species.
- Most data indicate that SD in zebrafish is not based primarily on the action of sex chromosomes.
- The zebrafish has PSD system, i.e. more than one autosomal genes have an effect on the direction of gonad differentiation (with or without contribution from sex chromosomes).
- The main characteristics of PSD observed in zebrafish include: (i) cumulative effect of multiple genes on SD; (ii) wide ranging familial sex ratios (including severely biased lines) that are stable in repeated crosses; (iii) strong influence from parental genotypes and (iv) a large number of expected sexual genotypes among the gametes, not just two as in CSD species.
- There are at least three developmental pathways involved with gonad transformation and differentiation, the contribution of several others is expected.

### Acknowledgements

The authors are grateful to past and current members of the Orbán lab, especially Richárd Bártfai, Junhui Jiang, Yang Li, Rajini Sreenivasan and Xingang Wang, for data, discussions, suggestions and knowledge that have contributed to ideas described in the review. Arguments and discussions with Matt Harris, Per-Erik Olsson, Francesc Piferrer, Laia Ribas, Reade Roberts and Kellee Siegfried have also added depth to

the story. The authors also thank two anonymous reviewers for their suggestions and criticisms that helped to improve an earlier version as well as Shubha Vij and Natascha May Thevasagayam for proofreading the manuscript. The work at Orbán lab is supported by the National Research Foundation of Singapore, the Agri-Food and Veterinary Authority of Singapore and the Strategic Research Program of Temasek Life Sciences Laboratory.

### FUNDING

This study was supported by the Strategic Research Program of Temasek Life Sciences Laboratory and the Agri-Food and Veterinary Authority of Singapore.

### References

1. Nelson JS. *Fishes of the World*. 4th edn. Hoboken, NJ, USA: John Wiley & Sons, Inc., 2007.
2. Lévêque C, Oberdorff T, Paugy D, *et al.* Global diversity of fish (Pisces) in freshwater. *Hydrobiologia* 2008;**595**:545–67.
3. Devlin RH, Nagahama Y. Sex determination and sex differentiation in fish: an overview of genetic, physiological, and environmental influences. *Aquaculture* 2002;**208**: 191–364.
4. Penman DJ, Piferrer F. Fish gonadogenesis. Part I: Genetic and environmental mechanisms of sex determination. *Rev Fish Sci* 2008;**16**:16–34.
5. Graves JAM. Weird animal genomes and the evolution of vertebrate sex and sex chromosomes. *Annu Rev Genet* 2008;**42**:565–86.
6. Spence R, Gerlach G, Lawrence C, *et al.* The behaviour and ecology of the zebrafish, *Danio rerio*. *Biol Rev Camb Philos Soc* 2008;**83**:13–34.
7. Engeszer RE, Patterson LB, Rao AA, *et al.* Zebrafish in the wild: a review of natural history and new notes from the field. *Zebrafish* 2007;**4**:21–40.
8. Baroiller JF, D’Cotta H. Environment and sex determination in farmed fish. *Comp Biochem Physiol C Toxicol Pharmacol* 2001;**130**:399–409.
9. Charlesworth B. Sex determination: primitive Y chromosomes in fish. *Curr Biol* 2004;**14**:R745–7.
10. Nagahama Y. Molecular mechanisms of sex determination and gonadal sex differentiation in fish. *Fish Physiol Biochem* 2005;**31**:105–9.
11. Volff JN, Nanda I, Schmid M, *et al.* Governing sex determination in fish: regulatory putches and ephemeral dictators. *Sex Dev* 2007;**1**:85–99.
12. Baroiller JF, D’Cotta H, Saillant E. Environmental effects on fish sex determination and differentiation. *Sex Dev* 2009;**3**:118–35.
13. Herpin A, Schartl M. Molecular mechanisms of sex determination and evolution of the Y-chromosome: Insights from the medakafish (*Oryzias latipes*). *Mol Cell Endocrinol* 2009;**306**:51–8.
14. Mank JE, Avise JC. Evolutionary diversity and turnover of sex determination in teleost fishes. *Sex Dev* 2009;**3**:60–7.

15. Sandra GE, Norma MM. Sexual determination and differentiation in teleost fish. *Rev Fish Biol Fish* 2010;**20**: 101–21.
16. Chen J, Hu W, Zhu Z. Progress in studies of fish reproductive development regulation. *Chin Sci Bull* 2012; **58**:7–16.
17. Kikuchi K, Hamaguchi S. Novel sex-determining genes in fish and sex chromosome evolution. *Dev Dyn* 2013; **242**:339–53.
18. Hattori RS, Strussmann CA, Fernandino JI, et al. Genotypic sex determination in teleosts: Insights from the testis-determining *amhy* gene. *Gen Comp Endocrinol* 2013;**192**: 55–9.
19. Piferrer F, Guiguen Y. Fish gonadogenesis. Part II: Molecular biology and genomics of sex differentiation. *Rev Fish Sci* 2008;**16**:35–55.
20. von Hofsten J, Olsson PE. Zebrafish sex determination and differentiation: involvement of FTZ-F1 genes. *Reprod Biol Endocrinol* 2005;**3**:63.
21. Orban L, Sreenivasan R, Olsson PE. Long and winding roads: testis differentiation in zebrafish. *Mol Cell Endocrinol* 2009;**312**:35–41.
22. Siegfried KR. In search of determinants: gene expression during gonadal sex differentiation. *J Fish Biol* 2010;**76**: 1879–1902.
23. Tong SK, Hsu HJ, Chung BC. Zebrafish monosex population reveals female dominance in sex determination and earliest events of gonad differentiation. *Dev Biol* 2010;**344**: 849–56.
24. Bradley KM, Breyer JP, Melville DB, et al. An SNP-based linkage map for zebrafish reveals sex determination loci. *G3* 2011;**1**:3–9.
25. Anderson JL, Rodriguez Mari A, Braasch I, et al. Multiple sex-associated regions and a putative sex chromosome in zebrafish revealed by RAD mapping and population genomics. *PLoS One* 2012;**7**:e40701.
26. Liew WC, Bartfai R, Lim Z, et al. Polygenic sex determination system in zebrafish. *PLoS One* 2012;**7**:e34397.
27. Lawrence C, Ebersole JP, Kesseli RV. Rapid growth and out-crossing promote female development in zebrafish (*Danio rerio*). *Environ Biol Fishes* 2008;**81**:239–46.
28. Corley-Smith GE, Lim CJ, Brandhorst BP. Production of androgenetic zebrafish (*Danio rerio*). *Genetics* 1996;**142**: 1265–76.
29. Manolakou P, Lavranos G, Angelopoulou R. Molecular patterns of sex determination in the animal kingdom: a comparative study of the biology of reproduction. *Reprod Biol Endocrinol* 2006;**4**:59.
30. Piferrer F, Ribas L, Diaz N. Genomic approaches to study genetic and environmental influences on fish sex determination and differentiation. *Mar Biotechnol* 2012;**14**:591–604.
31. Matsuda M, Nagahama Y, Shinomiya A, et al. DMY is a Y-specific DM-domain gene required for male development in the medaka fish. *Nature* 2002;**417**:559–63.
32. Peichel CL, Ross JA, Matson CK, et al. The master sex-determination locus in threespine sticklebacks is on a nascent Y chromosome. *Curr Biol* 2004;**14**:1416–24.
33. Hattori RS, Murai Y, Oura M, et al. A Y-linked anti-Mullerian hormone duplication takes over a critical role in sex determination. *Proc Natl Acad Sci USA* 2012;**109**: 2955–9.
34. Krueger WH, Oliveira K. Evidence for environmental sex determination in the American eel, *Anguilla rostrata*. *Environ Biol Fishes* 1999;**55**:381–9.
35. Warner RR, Swearer SE. Social-control of sex-change in the bluehead wrasse, *Thalassoma bifasciatum* (Pisces, Labridae). *Biol Bull* 1991;**181**:199–204.
36. Ospina-Alvarez N, Piferrer F. Temperature-dependent sex determination in fish revisited: prevalence, a single sex ratio response pattern, and possible effects of climate change. *PLoS One* 2008;**3**:e2837.
37. Ser JR, Roberts RB, Kocher TD. Multiple interacting loci control sex determination in Lake Malawi cichlid fish. *Evolution* 2010;**64**:486–501.
38. Vandeputte M, Dupont-Nivet M, Chavanne H, et al. A polygenic hypothesis for sex determination in the European sea bass *Dicentrarchus labrax*. *Genetics* 2007;**176**: 1049–57.
39. Abozaid H, Wessels S, Horstgen-Schwark G. Effect of rearing temperatures during embryonic development on the phenotypic sex in zebrafish (*Danio rerio*). *Sex Dev* 2011;**5**: 259–65.
40. Abozaid H, Wessels S, Horstgen-Schwark G. Elevated temperature applied during gonadal transformation leads to male bias in zebrafish (*Danio rerio*). *Sex Dev* 2012;**6**:201–9.
41. Strüssmann C, Nakamura M. Morphology, endocrinology, and environmental modulation of gonadal sex differentiation in teleost fishes. *Fish Physiol Biochem* 2002;**26**: 13–29.
42. Pieau C, Dorizzi M, Richard-Mercier N. Temperature-dependent sex determination and gonadal differentiation in reptiles. *Cell Mol Life Sci* 1999;**55**:887–900.
43. Modi WS, Crews D. Sex chromosomes and sex determination in reptiles. *Curr Opin Genet Dev* 2005;**15**:660–5.
44. Shang EH, Yu RM, Wu RS. Hypoxia affects sex differentiation and development, leading to a male-dominated population in zebrafish (*Danio rerio*). *Environ Sci Technol* 2006;**40**:3118–22.
45. Uchida D, Yamashita M, Kitano T, et al. An aromatase inhibitor or high water temperature induce oocyte apoptosis and depletion of P450 aromatase activity in the gonads of genetic female zebrafish during sex-reversal. *Comp Biochem Physiol A Mol Integr Physiol* 2004;**137**:11–20.
46. Villamizar N, Ribas L, Piferrer F, et al. Impact of daily thermocycles on hatching rhythms, larval performance and sex differentiation of zebrafish. *PLoS One* 2012;**7**:e52153.
47. Navarro-Martin L, Vinas J, Ribas L, et al. DNA methylation of the gonadal aromatase (*cyp19a*) promoter is involved in temperature-dependent sex ratio shifts in the European sea bass. *PLoS Genet* 2011;**7**:e1002447.
48. Yamaguchi T, Kitano T. High temperature induces *cyp26b1* mRNA expression and delays meiotic initiation of germ cells by increasing cortisol levels during gonadal sex differentiation in Japanese flounder. *Biochem Biophys Res Commun* 2012;**419**:287–92.
49. Graves JAM. Sex chromosome specialization and degeneration in mammals. *Cell* 2006;**124**:901–14.
50. Gschwend AR, Weingartner LA, Moore RC, et al. The sex-specific region of sex chromosomes in animals and plants. *Chromosome Res* 2012;**20**:57–69.
51. Cline TW. The *Drosophila* sex determination signal: How do flies count to two? *Trends Genet* 1993;**9**:385–90.

52. Kamiya T, Kai W, Tasumi S, *et al.* A trans-species missense SNP in *Amlhr2* is associated with sex determination in the tiger pufferfish, *Takifugu rubripes* (Fugu). *PLoS Genet* 2012;**8**: e1002798.
53. Delbridge M, Graves J. Mammalian Y chromosome evolution and the male-specific functions of Y chromosome-borne genes. *Rev Reprod* 1999;**4**:101–9.
54. Ellegren H. Sex-chromosome evolution: recent progress and the influence of male and female heterogamety. *Nat Rev Genet* 2011;**12**:157–66.
55. Graves JAM. The origin and function of the mammalian Y chromosome and Y-borne genes—an evolving understanding. *Bioessays* 1995;**17**:311–20.
56. Post A. Vergleichende untersuchungen der chromosome-nzahlen bei susswassernteleosteen. *Z Zool Syst Evol* 1964;**3**: 47–93.
57. Endo A, Ingalls TH. Chromosomes of the zebra fish. A model for cytogenetic, embryologic, and ecologic study. *J Hered* 1968;**59**:382–4.
58. Rishi KK. Karyotypic studies on four species of fishes. *Nucleus* 1976;**19**:95–8.
59. Schreeb K, Groth G, Sachsse W, *et al.* The karyotype of the zebrafish (*Brachydanio rerio*). *J Exp Anim Sci* 1993;**36**:27–31.
60. Pijnacker LP, Ferwerda MA. Zebrafish chromosome banding. *Genome* 1995;**38**:1052–5.
61. Daga R, Thode G, Amores A. Chromosome complement, C-banding, Ag-NOR and replication banding in the zebrafish *Danio rerio*. *Chromosome Res* 1996;**4**:29–32.
62. Gornung E, Gabrielli I, Cataudella S, *et al.* CMA3-banding pattern and fluorescence *in situ* hybridization with 18S rRNA genes in zebrafish chromosomes. *Chromosome Res* 1997;**5**:40–46.
63. Amores A, Postlethwait JH. The zebrafish: Genetics and genomics. In: Detrich III HW, Westerfield M, Zon LI (eds). *Method. Cell Biol.* San Diego, CA, USA, Academic Press, 1998:323–38.
64. Ueda T, Naoi H. BrdU-4Na-EDTA-Giemsa band karyotypes of 3 small freshwater fish, *Danio rerio*, *Oryzias latipes*, and *Rhodeus ocellatus*. *Genome* 1999;**42**:531.
65. Phillips RB, Reed KM. Localization of repetitive DNAs to zebrafish (*Danio rerio*) chromosomes by fluorescence *in situ* hybridization (FISH). *Chromosome Res* 2000;**8**:27–35.
66. Fontana F, Chiarelli B, Rossi AC. Il cariotipo di alcune specie di Cyprinidae, Centrarchidae, Characidae studiate mediante culture *in vivo*. *Caryologia* 1970;**23**:549–64.
67. Sharma K, Sharma O, Tripathi M. Female heterogamety in *Danio rerio* (Cypriniformes: Cyprinidae). *Proc Ind Natl Sci Acad* 1998;**68**:123–6.
68. Arkhipchuk VV. Role of chromosomal and genome mutations in the evolution of bony fishes. *Hydrobiol J* 1995;**31**: 55–65.
69. Tease C, Hulten MA. Inter-sex variation in synaptonemal complex lengths largely determine the different recombination rates in male and female germ cells. *Cytogenet Genome Res* 2004;**107**:208–15.
70. Singer A, Perlman H, Yan Y, *et al.* Sex-specific recombination rates in zebrafish (*Danio rerio*). *Genetics* 2002;**160**: 649–57.
71. Postlethwait JH, Johnson SL, Midson CN, *et al.* A genetic linkage map for the zebrafish. *Science* 1994;**264**: 699–703.
72. Postlethwait JH, Yan YL, Gates MA, *et al.* Vertebrate genome evolution and the zebrafish gene map. *Nat Genet* 1998;**18**:345–9.
73. Kochakpour N, Moens PB. Sex-specific crossover patterns in zebrafish (*Danio rerio*). *Heredity* 2008;**100**:489–95.
74. Traut W, Winking H. Meiotic chromosomes and stages of sex chromosome evolution in fish: zebrafish, platyfish and guppy. *Chromosome Res* 2001;**9**:659–72.
75. Wallace BMN, Wallace H. Synaptonemal complex karyotype of zebrafish. *Heredity* 2003;**90**:136–40.
76. Purdom CE. Radiation-induced gynogenesis and androgenesis in fish. *Heredity* 1969;**24**:431–44.
77. Parsons JE, Thorgaard GH. Production of androgenetic diploid rainbow trout. *J Hered* 1985;**76**:177–81.
78. Ihssen PE, McKay LR, Mcmillan I, *et al.* Ploidy manipulation and gynogenesis in fishes – cytogenetic and fisheries applications. *T Am Fish Soc* 1990;**119**:698–717.
79. Komen H, Thorgaard GH. Androgenesis, gynogenesis and the production of clones in fishes: A review. *Aquaculture* 2007;**269**:150–73.
80. Horváth L, Orbán L. Genome and gene manipulation in the common carp. *Aquaculture* 1995;**129**:157–81.
81. Hörstgen-Schwark G. Production of homozygous diploid zebra fish (*Brachydanio rerio*). *Aquaculture* 1993;**112**:25–37.
82. Pelegri F, Schulte-Merker S. The zebrafish: Genetics and genomics. In: Detrich III HW, Westerfield M, Zon LI (eds). *Method. Cell Biol.* San Diego, CA, USA: Academic Press, 1999:1–20.
83. Streisinger G, Walker C, Dower N, *et al.* Production of clones of homozygous diploid zebra fish (*Brachydanio rerio*). *Nature* 1981;**291**:293–6.
84. Uchida D, Yamashita M, Kitano T, *et al.* Oocyte apoptosis during the transition from ovary-like tissue to testes during sex differentiation of juvenile zebrafish. *J Exp Biol* 2002;**205**: 711–8.
85. Pandian TJ, Sheela SG. Hormonal induction of sex reversal in fish. *Aquaculture* 1995;**138**:1–22.
86. Williams JGK, Kubelik AR, Livak KJ, *et al.* DNA polymorphisms amplified by arbitrary primers are useful as genetic-markers. *Nucleic Acids Res* 1990;**18**:6531–5.
87. Vos P, Hogers R, Bleeker M, *et al.* AFLP: a new technique for DNA fingerprinting. *Nucleic Acids Res* 1995;**23**:4407–14.
88. Chen JJ, Du QY, Yue YY, *et al.* Screening and identification of male-specific DNA fragments in common carps *Cyprinus carpio* using suppression subtractive hybridization. *J Fish Biol* 2010;**77**:403–13.
89. Charlesworth D, Mank JE. The birds and the bees and the flowers and the trees: lessons from genetic mapping of sex determination in plants and animals. *Genetics* 2010;**186**: 9–31.
90. Chang A, Liew WC, Chuah A, *et al.* FluMEP: a new genotyping method combining the advantages of randomly amplified polymorphic DNA and amplified fragment length polymorphism. *Electrophoresis* 2007;**28**:525–34.
91. Kirankumar S, Anathy V, Pandian TJ. Hormonal induction of supermale golden rosy barb and isolation of Y-chromosome specific markers. *Gen Comp Endocrinol* 2003;**134**:62–71.
92. Kirankumar S, Pandian TJ. Production and progeny testing of androgenetic rosy barb *Puntius conchontius*. *J Exp Zool Part A* 2004;**301A**:938–51.

93. Nanda I, Feichtinger W, Schmid M, *et al.* Simple repetitive sequences are associated with differentiation of the sex-chromosomes in the guppy fish. *J Mol Evol* 1990;**30**: 456–62.
94. Tripathi N, Hoffmann M, Willing EM, *et al.* Genetic linkage map of the guppy, *Poecilia reticulata*, and quantitative trait loci analysis of male size and colour variation. *Proc Biol Sci* 2009;**276**:2195–208.
95. Howe K, Clark MD, Torroja CF, *et al.* The zebrafish reference genome sequence and its relationship to the human genome. *Nature* 2013;**496**:498–503.
96. Patowary A, Purkanti R, Singh M, *et al.* A sequence-based variation map of zebrafish. *Zebrafish* 2013;**10**:15–20.
97. Pinkel D, Seagraves R, Sudar D, *et al.* High resolution analysis of DNA copy number variation using comparative genomic hybridization to microarrays. *Nat Genet* 1998;**20**: 207–11.
98. Pinto D, Darvishi K, Shi X, *et al.* Comprehensive assessment of array-based platforms and calling algorithms for detection of copy number variants. *Nat Biotechnol* 2011;**29**:512–20.
99. Brown KH, Dobrinski KP, Lee AS, *et al.* Extensive genetic diversity and substructuring among zebrafish strains revealed through copy number variant analysis. *Proc Natl Acad Sci USA* 2012;**109**:529–34.
100. Wilkins AS. Moving up the hierarchy: A hypothesis on the evolution of a genetic sex determination pathway. *Bioessays* 1995;**17**:71–77.
101. Morrish BC, Sinclair AH. Vertebrate sex determination: many means to an end. *Reproduction* 2002;**124**:447–57.
102. Graham P, Penn JK, Schedl P. Masters change, slaves remain. *Bioessays* 2003;**25**:1–4.
103. Bagheri-Fam S, Sinclair AH, Koopman P, *et al.* Conserved regulatory modules in the Sox9 testis-specific enhancer predict roles for SOX, TCF/LEF, Forkhead, DMRT, and GATA proteins in vertebrate sex determination. *Int J Biochem Cell B* 2010;**42**:472–7.
104. Graves JAM, Peichel CL. Are homologies in vertebrate sex determination due to shared ancestry or to limited options? *Genome Biol* 2010;**11**:205.
105. Yano A, Guyomard R, Nicol B, *et al.* An immune-related gene evolved into the master sex-determining gene in rainbow trout, *Oncorhynchus mykiss*. *Curr Biol* 2012;**22**: 1423–8.
106. Sreenivasan R, Cai M, Bartfai R, *et al.* Transcriptomic analyses reveal novel genes with sexually dimorphic expression in the zebrafish gonad and brain. *PLoS One* 2008;**3**: e1791.
107. Wen C, Zhang Z, Ma W, *et al.* Genome-wide identification of female-enriched genes in zebrafish. *Dev Dyn* 2005;**232**:171–9.
108. Small CM, Carney GE, Mo Q, *et al.* A microarray analysis of sex- and gonad-biased gene expression in the zebrafish: evidence for masculinization of the transcriptome. *BMC Genomics* 2009;**10**:579.
109. Zheng W, Xu H, Lam SH, *et al.* Transcriptomic analyses of sexual dimorphism of the zebrafish liver and the effect of sex hormones. *PLoS One* 2013;**8**:e53562.
110. Santos EM, Kille P, Workman VL, *et al.* Sexually dimorphic gene expression in the brains of mature zebrafish. *Comp Biochem Physiol A Mol Integr Physiol* 2008;**149**:314–24.
111. Bull JJ. *Evolution of Sex Determining Mechanisms*. Melon Park, CA, USA: Benjamin-Cummings Publishing Company, 1983.
112. Moore EC, Roberts RB. Polygenic sex determination. *Curr Biol* 2013;**23**:R510–2.
113. Kosswig C. Polygenic sex determination. *Experientia* 1964;**20**:190–9.
114. Desprez D, Briand C, Hoareau MC, *et al.* Study of sex ratio in progeny of a complex *Oreochromis* hybrid, the Florida red tilapia. *Aquaculture* 2006;**251**:231–7.
115. Cnaani A, Lee BY, Zilberman N, *et al.* Genetics of sex determination in tilapiine species. *Sex Dev* 2008;**2**:43–54.
116. Tessema M, Müller-Belecke A, Hörstgen-Schwark G. Effect of rearing temperatures on the sex ratios of *Oreochromis niloticus* populations. *Aquaculture* 2006;**258**:270–77.
117. Takahashi H. Juvenile hermaphroditism in the zebrafish, *Brachydanio rerio*. *Bull Fac Fish Hokkaido Univ* 1977;**28**:57–65.
118. Maack G, Segner H. Morphological development of the gonads in zebrafish. *J Fish Biol* 2003;**62**:895–906.
119. Wang XG, Bartfai R, Sleptsova-Freidrich I, *et al.* The timing and extent of ‘juvenile ovary’ phase are highly variable during zebrafish testis differentiation. *J Fish Biol* 2007;**70**:33–44.
120. Siegfried KR, Nusslein-Volhard C. Germ line control of female sex determination in zebrafish. *Dev Biol* 2008;**324**: 277–87.
121. Slanchev K, Stebler J, de la Cueva-Méndez G, *et al.* Development without germ cells: The role of the germ line in zebrafish sex differentiation. *Proc Natl Acad Sci USA* 2005;**102**:4074–9.
122. Dranow DB, Tucker RP, Draper BW. Germ cells are required to maintain a stable sexual phenotype in adult zebrafish. *Dev Biol* 2013;**376**:43–50.
123. Krövel AV, Olsen LC. Expression of a *vas::EGFP* transgene in primordial germ cells of the zebrafish. *Mech Develop* 2002;**116**:141–50.
124. Hsiao CD, Tsai HJ. Transgenic zebrafish with fluorescent germ cell: a useful tool to visualize germ cell proliferation and juvenile hermaphroditism *in vivo*. *Dev Biol* 2003;**262**: 313–23.
125. Onichtchouk D, Aduroja K, Belting HG, *et al.* Transgene driving GFP expression from the promoter of the zona pellucida gene *zpc* is expressed in oocytes and provides an early marker for gonad differentiation in zebrafish. *Dev Dyn* 2003;**228**:393–404.
126. Rodríguez-Marí A, Yan Y-L, BreMiller RA, *et al.* Characterization and expression pattern of zebrafish anti-Müllerian hormone (*amlh*) relative to *sox9a*, *sox9b*, and *cyp19a1a*, during gonad development. *Gene Expr Patterns* 2005;**5**:655–67.
127. Wang XG, Orbán L. Anti-Müllerian hormone and 11 beta-hydroxylase show reciprocal expression to that of aromatase in the transforming gonad of zebrafish males. *Dev Dyn* 2007;**236**:1329–38.
128. Rodríguez-Marí A, Cañestro C, BreMiller RA, *et al.* Sex reversal in zebrafish *fancl* mutants is caused by Tp53-mediated germ cell apoptosis. *PLoS Genet* 2010;**6**:e1001034.
129. Beer RL, Draper BW. *nanos3* maintains germline stem cells and expression of the conserved germline stem cell gene *nanos2* in the zebrafish ovary. *Dev Biol* 2013;**374**: 308–18.

130. Rodríguez-Marí A, Postlethwait JH. The zebrafish: Disease models and chemical screens. In: Detrich III HW, Westerfield M, Zon LI (eds). *Method Cell Biol*. San Diego, CA, USA, Academic Press, 2011:461–90.
131. Lane DP, Crawford LV. T antigen is bound to a host protein in SY40-transformed cells. *Nature* 1979;**278**:261–3.
132. Hayden MS, Ghosh S. Shared principles in NF- $\kappa$ B signaling. *Cell* 2008;**132**:344–62.
133. Pradhan A, Khalaf H, Ochsner SA, *et al*. Activation of NF- $\kappa$ B protein prevents the transition from juvenile ovary to testis and promotes ovarian development in zebrafish. *J Biol Chem* 2012;**287**:37926–38.
134. Sreenivasan R, Wang X, Bartfai R, *et al*. Global expression profiling in zebrafish reveals genes with potential roles in sexual differentiation. *Biol Reprod* 2009;**78**:116.
135. Bernard P, Harley VR. *Wnt4* action in gonadal development and sex determination. *Int J Biochem Cell B* 2007;**39**:31–43.
136. Nef S, Vassalli JD. Complementary pathways in mammalian female sex determination. *J Biol* 2009;**8**:74.
137. Cutting A, Chue J, Smith CA. Just how conserved is vertebrate sex determination? *Dev Dyn* 2013;**242**:380–7.
138. Herpin A, Adolphi MC, Nicol B, *et al*. Divergent expression regulation of gonad development genes in medaka shows incomplete conservation of the downstream regulatory network of vertebrate sex determination. *Mol Biol Evol* 2013;**30**:2328–46.
139. Piferrer F. Epigenetics of sex determination and gonadogenesis. *Dev Dyn* 2013;**242**:360–70.