

## ORIGINAL RESEARCH

# The effect of high $[K^+]_o$ on spontaneous $Ca^{2+}$ waves in freshly isolated interstitial cells of Cajal from the rabbit urethra

Bernard T. Drumm<sup>1,2</sup>, Gerard P. Sergeant<sup>1</sup>, Mark A. Hollywood<sup>1</sup>, Keith T. Thornbury<sup>1</sup>, Toshio T. Matsuda<sup>3</sup>, Akemichi Baba<sup>3</sup>, Brian J. Harvey<sup>2</sup> & Noel G. McHale<sup>1</sup>

1 Smooth Muscle Research Centre, Dundalk Institute of Technology, Dundalk, Co. Louth, Ireland

2 Department of Molecular Medicine, Royal College of Surgeons in Ireland, Beaumont Hospital, Dublin 9, Ireland

3 Graduate School of Pharmaceutical Sciences, Osaka University, Osaka, Japan

## Keywords

Calcium oscillations, interstitial cell of Cajal, smooth muscle, sodium/calcium exchange.

## Correspondence

Noel G. McHale, Smooth Muscle Research Centre, Dundalk Institute of Technology, Dundalk, Co. Louth, Ireland.  
Tel: +353429370447  
Fax: +353429370461  
E-mail: noel.mchale@dkit.ie

## Funding Information

This work was supported through The National Biophotonics Platform by The Higher Education Authority of Ireland (HEA) under the Program for Research in Third Level Institutions (PRTL) Cycle 4.

Received: 18 October 2013; Revised: 19 December 2013; Accepted: 23 December 2013

doi: 10.1002/phy2.203

*Physiol Rep*, 2 (1), 2014, e00203, doi: 10.1002/phy2.203

## Introduction

Spontaneous myogenic tone generated by the smooth muscle wall of the urethra is associated with the occurrence of spontaneous electrical slow waves (Hashitani et al. 1996; Hashitani and Edwards 1999). These events are similar to those which have been recorded in the gastrointestinal tract (GIT) where they originate in interstitial cells of Cajal (ICC) (Sanders 1996; Sanders et al 2006). This led Sergeant et al. (2000) to suggest that a similar pacemaking mechanism might exist in the urethra.

## Abstract

Interstitial cells of Cajal (ICC) act as putative pacemaker cells in the rabbit urethra. Pacemaker activity in ICC results from spontaneous global  $Ca^{2+}$  waves that can be increased in frequency by raising external  $[K^+]_o$ . The purpose of this study was to elucidate the mechanism of this response. Intracellular  $[Ca^{2+}]_i$  was measured in fluo-4-loaded smooth muscle cells (SMCs) and ICC using a Nipkow spinning disk confocal microscope. Increasing  $[K^+]_o$  to 60 mmol/L caused an increase in  $[Ca^{2+}]_i$  accompanied by contraction in SMCs. Raising  $[K^+]_o$  did not cause contraction in ICC, but the frequency of firing of spontaneous calcium waves increased. Reducing  $[Ca^{2+}]_o$  to 0 mmol/L abolished the response in both cell types. Nifedipine of 1  $\mu$ mol/L blocked the response of SMC to high  $[K^+]_o$ , but did not affect the increase in firing in ICC. This latter effect was blocked by 30  $\mu$ mol/L  $NiCl_2$  but not by the T-type  $Ca^{2+}$  channel blocker mibefradil (300 nmol/L). However, inhibition of  $Ca^{2+}$  influx via reverse-mode sodium/calcium exchange (NCX) using either 1  $\mu$ mol/L SEA0400 or 5  $\mu$ mol/L KB-R7943 did block the effect of high  $[K^+]_o$  on ICC. These data suggest that high  $K^+$  solution increases the frequency of calcium waves in ICC by increasing  $Ca^{2+}$  influx through reverse-mode NCX.

The rabbit urethra contains a subpopulation of cells which are distinct both functionally and morphologically from the bulk smooth muscle cells (SMCs) (Sergeant et al. 2000). These cells (which we will refer to as ICC, by analogy with the cells found in the gastrointestinal tract) are noncontractile, but show regular spontaneous transient depolarizations (STDs) under current clamp conditions. The currents or STICs (spontaneous transient inward currents), which underlie the STDs, are believed to result from activation of  $Ca^{2+}$ -dependent  $Cl^-$  channels by  $Ca^{2+}$  released from intracellular stores (Sergeant et al. 2001a,b).

Among the many differences between urethral ICC and SMCs are their responses to raised extracellular potassium. In the former cells there is no evidence of length change (as the cells are noncontractile), but firing frequency of spontaneous calcium waves is greatly increased. In contrast, urethral SMCs respond with a raised intracellular calcium and cell contraction.

The purpose of this study was to investigate the underlying mechanisms of these differing responses.

## Methods

### Cell isolation

All procedures were carried out in accordance with current EU legislation and with the approval of Dundalk Institute of Technology Animal Use and Care Committee. Male and female New Zealand white rabbits (16–20 weeks old) were humanely killed with a lethal injection of pentobarbitone (i.v.). The midurethra was removed and placed in Krebs solution and individual ICC were isolated enzymatically as previously described (Bradley *et al.* 2006).

### Calcium imaging

Cells were incubated in 2  $\mu\text{mol/L}$  fluo-4/AM (Molecular Probes, Paisley, UK) in Hanks solution for 30 min at 37°C. They were then washed in Hanks solution and allowed to settle in glass-bottomed Petri dishes until they had stuck down. Cells were imaged using an iXon 887 EMCCD camera (Andor Technology, Belfast; 512  $\times$  512 pixels, pixel size 16  $\times$  16  $\mu\text{m}$ ) coupled to a Nipkow spinning disk confocal head (CSU22, Yokogawa, Japan). A krypton–argon laser (Melles Griot, Zevenar, the Netherlands) at 488 nm was used to excite the fluo-4, and the emitted light was detected at wavelengths  $>510$  nm. Images were usually acquired at 5 frames/sec. Analysis of recordings was performed using iQ software (Andor, Belfast, UK). Movie files recorded in iQ were converted into a stack of TIFF (tagged image file format) images and imported into Image J (version 1.40, National Institutes of Health, MD; <http://rsbweb.nih.gov/ij>) for post hoc analysis. Prior to analysis, background fluorescence was subtracted from the stack. A single pixel line was drawn along the midaxis of the cell and using the “reslice” function in Image J (NIH, Bethesda, MD) a pseudo–line-scan image was produced with distance along the cell ( $\mu\text{m}$ ) on the vertical axis and time (sec) on the horizontal axis. Basal fluorescence was obtained from areas of the cell displaying the most uniform and least intense fluorescence ( $F_0$ ). To analyze Ca<sup>2+</sup> waves, a plot profile was generated by drawing a rectangle over an entire line scan and plotting an intensity profile in Image J. The amplitude of

waves was obtained from this plot profile by calculating the difference between basal Ca<sup>2+</sup> fluorescence and the peak Ca<sup>2+</sup> fluorescence with amplitude values expressed as  $\Delta F/F_0$ . Waves were defined as events which were  $>25\%$  of the maximum amplitude event during a control period.

Data were expressed as mean  $\pm$  standard error of the mean (SEM) for the number of experiments (cells) analyzed. In each case, cells were taken from a minimum of two animals. Statistical analysis was performed using either the Student’s paired *t*-test or analysis of variance (ANOVA) with a Tukey multiple comparison test where multiple comparisons were required. In all statistical analyses,  $P < 0.05$  was taken as significant.

### Solutions

The solutions used were of the following composition (mmol/L):

*Ca<sup>2+</sup>-free Hanks solution (cell isolation):* NaCl (125.0), KCl (5.4), Glucose (10.0), Sucrose (2.9), NaHCO<sub>3</sub> (4.2), KH<sub>2</sub>PO<sub>4</sub> (0.4), NaH<sub>2</sub>PO<sub>4</sub> (0.3), HEPES (10.0), pH to 7.4 using NaOH. *100  $\mu\text{mol/L}$  Ca<sup>2+</sup> Hanks solution:* CaCl<sub>2</sub>·2H<sub>2</sub>O (0.1), NaCl (125.0), KCl (5.4), Glucose (10.0), Sucrose (2.9), NaHCO<sub>3</sub> (4.2), KH<sub>2</sub>PO<sub>4</sub> (0.4), NaH<sub>2</sub>PO<sub>4</sub> (0.3), HEPES (10.0), pH to 7.4 using NaOH.

*Normal Hanks solution:* NaCl (125.0), KCl (5.4), Glucose (10.0), Sucrose (2.9), NaHCO<sub>3</sub> (4.2), KH<sub>2</sub>PO<sub>4</sub> (0.4), NaH<sub>2</sub>PO<sub>4</sub> (0.3), MgCl<sub>2</sub>·6H<sub>2</sub>O (0.5), CaCl<sub>2</sub>·2H<sub>2</sub>O (1.8), MgSO<sub>4</sub> (0.4), HEPES (10.0), pH to 7.4 using NaOH.

*Ca<sup>2+</sup>-free Hanks solution (superfusion):* NaCl (125.0), KCl (5.4), Glucose (10.0), Sucrose (2.9), NaHCO<sub>3</sub> (4.2), KH<sub>2</sub>PO<sub>4</sub> (0.4), NaH<sub>2</sub>PO<sub>4</sub> (0.3), MgCl<sub>2</sub>·6H<sub>2</sub>O (2.3), EGTA (5.0), MgSO<sub>4</sub> (0.4), HEPES (10.0), pH to 7.4 using NaOH. *K<sup>+</sup> Hanks solution of 60 mmol/L:* NaCl (70.8), KCl (59.65), Glucose (10.0), Sucrose (2.9), NaHCO<sub>3</sub> (4.2), KH<sub>2</sub>PO<sub>4</sub> (0.4), NaH<sub>2</sub>PO<sub>4</sub> (0.3), MgCl<sub>2</sub>·6H<sub>2</sub>O (0.5), CaCl<sub>2</sub>·2H<sub>2</sub>O (1.8), MgSO<sub>4</sub> (0.4), HEPES (10.0). pH to 7.4 using NaOH. *Na<sup>+</sup> Hanks solution of 75 mmol/L:* NMDG (54.2), NaCl (70.8), KCl (5.4), Glucose (10.0), Sucrose (2.9), NaHCO<sub>3</sub> (4.2), KH<sub>2</sub>PO<sub>4</sub> (0.4), NaH<sub>2</sub>PO<sub>4</sub> (0.3), MgCl<sub>2</sub>·6H<sub>2</sub>O (0.5), CaCl<sub>2</sub>·2H<sub>2</sub>O (1.8), MgSO<sub>4</sub> (0.4), HEPES (10.0), pH to 7.4 using HCl.

### Drugs

Drugs were made up in dimethyl sulphoxide (DMSO), ethanol, or water depending on solubility. Stock solutions were added to the drug delivery reservoirs containing Hanks solution to make up the final concentrations. Drugs used were as follows: KB-R7943, Tocris (Bristol, UK); Mibefradil, Sigma (Wicklow, Ireland); Nifedipine, Bayer (Leverkusen, Germany); SEA0400 was synthesized by Taisyo Pharmaceutical Co., Ltd., Saitama, Japan. Mibe-

fradil was water soluble, while SEA0400 and KB-R7943 were dissolved in DMSO and diluted with Hanks solution to give a final DMSO concentration of 0.1% and 0.05%, respectively. Nifedipine was first dissolved in ethanol and diluted with Hanks solution to give a final ethanol concentration of 0.1%. Control experiments showed that these concentrations of vehicle had no significant effects on the responses measured in this study.

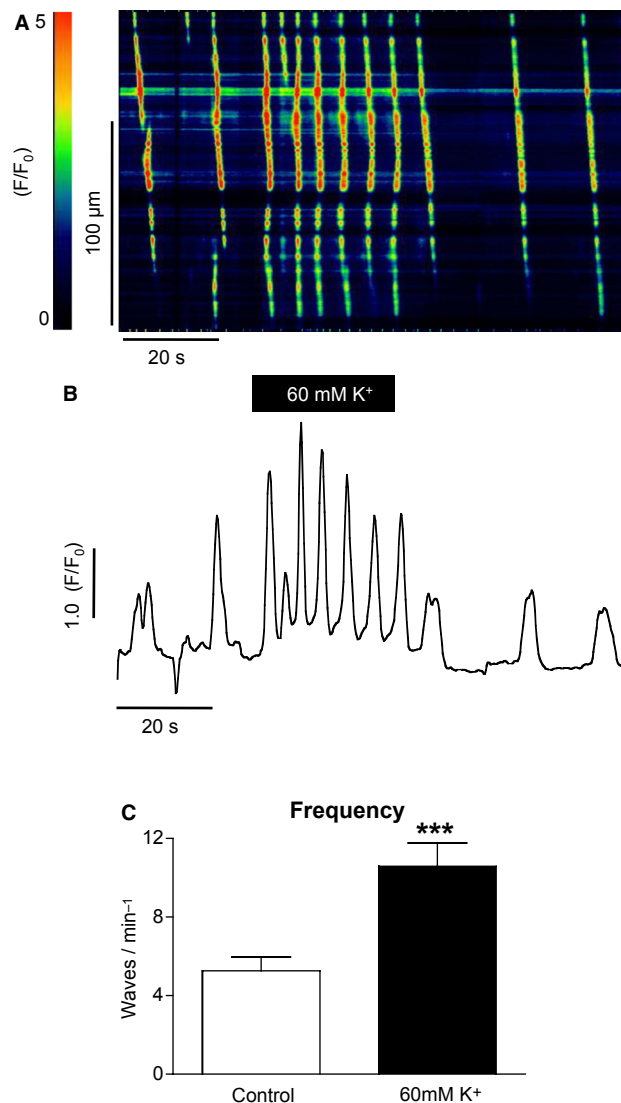
The cell under study was continuously superfused with Hanks solution by means of a close delivery system consisting of a pipette (tip diameter 200  $\mu\text{m}$ ) placed approximately 300  $\mu\text{m}$  away. This could be switched, with a dead space time of around 5 sec, to a solution containing a drug. All experiments were carried out at 35–37°C.

## Results

Single ICC isolated from the rabbit urethra displayed regularly occurring  $\text{Ca}^{2+}$  waves as previously described (Johnston *et al.* 2005; Sergeant *et al.* 2006a,b). The mean frequency, amplitude, and spread of these waves, measured under control conditions, in 34 cells were  $5.3 \pm 0.7 \text{ min}^{-1}$ ,  $1.9 \pm 0.2 \Delta F/F_0$ , and  $75.8 \pm 4.4 \mu\text{m}$ , respectively.

### The effect of high $[K^+]_o$

Figure 1A shows a representative pseudo-line scan showing the effect of high  $[K^+]_o$  (60 mmol/L) on spontaneous  $\text{Ca}^{2+}$  waves in a urethral ICC. In control conditions



**Figure 1.** The effect of high  $[K^+]_o$  on spontaneous  $\text{Ca}^{2+}$  waves in a urethral ICC. (A) Representative pseudo-line scan and (B) intensity profile. Oscillation frequency increased from  $6.6 \text{ min}^{-1}$  in control conditions to  $12 \text{ min}^{-1}$  in high  $[K^+]_o$ . Similar results were observed in a total of 34 cells and these results are summarized in (C).

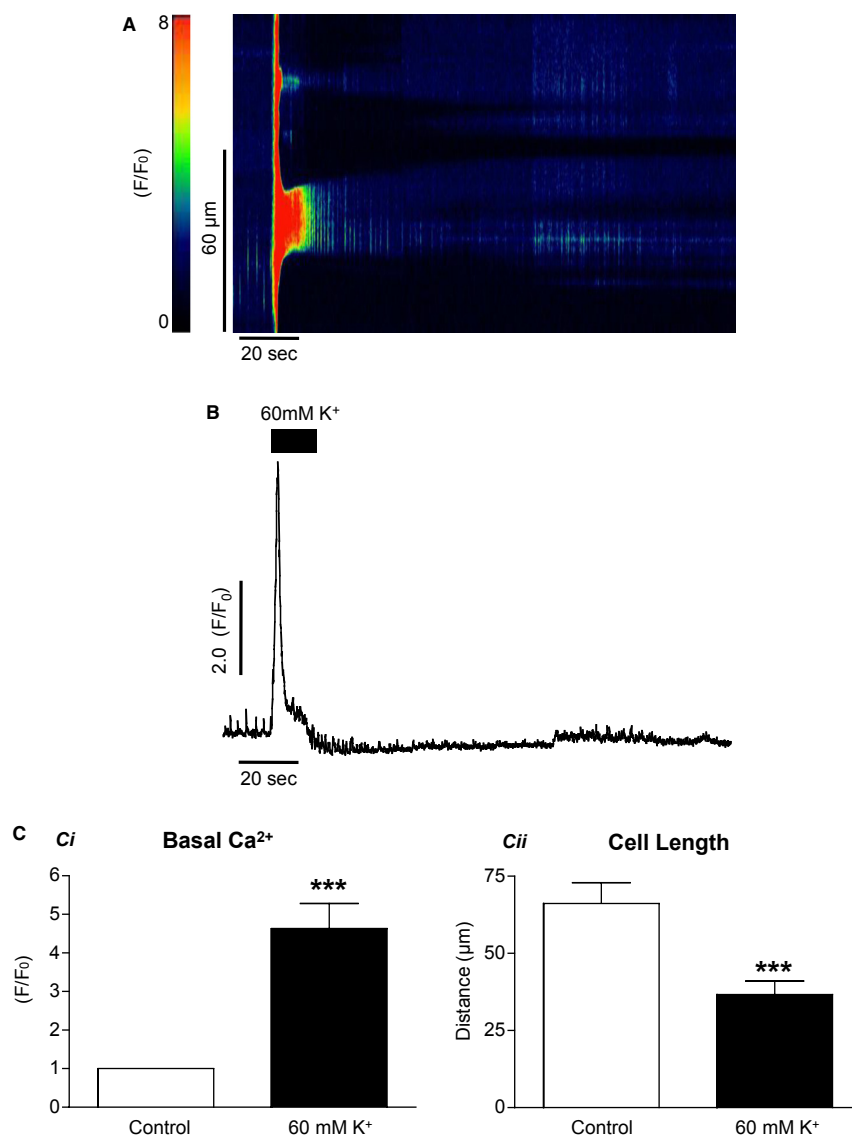
(5.8 mmol/L [K<sup>+</sup>]<sub>o</sub>), the cell fired spontaneous Ca<sup>2+</sup> waves at a frequency of ~6 min<sup>-1</sup>. When [K<sup>+</sup>]<sub>o</sub> was raised to 60 mmol/L the frequency increased to 12 min<sup>-1</sup>. Similar results were observed in a total of 34 cells and this is summarized in Figure 1C. The mean frequency of waves was 5.3 ± 0.7 min<sup>-1</sup> under control conditions compared to 10.6 ± 1.2 min<sup>-1</sup> in 60 mmol/L [K<sup>+</sup>]<sub>o</sub> (*P* < 0.001, paired *t*-test).

When this experiment was repeated using SMCs from the rabbit urethra, as seen in Figure 2A, high [K<sup>+</sup>]<sub>o</sub> caused a transient rise in [Ca<sup>2+</sup>]<sub>i</sub>. In a total of 12 cells, the basal F/F<sub>0</sub> was increased from 1 ± 0 in control to

4.6 ± 0.7 in high [K<sup>+</sup>]<sub>o</sub> (*P* < 0.001, paired *t*-test). Application of high [K<sup>+</sup>]<sub>o</sub> also caused the SMCs to contract. Mean cell length was reduced from 66.2 ± 6.8 to 36.7 ± 4.4 μm (*P* < 0.001, paired *t*-test). When [K<sup>+</sup>]<sub>o</sub> was restored to control concentrations, cells relaxed but not quite to control levels.

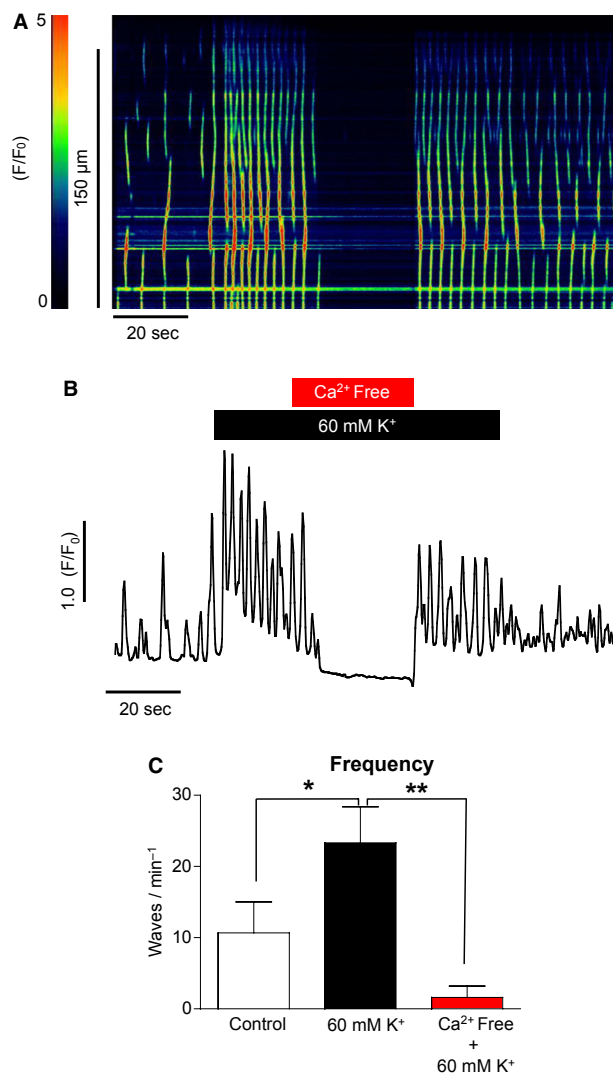
### The effect of blocking Ca<sup>2+</sup> influx

To determine if the effect of high [K<sup>+</sup>]<sub>o</sub> on Ca<sup>2+</sup> wave frequency in ICC was due to an effect on Ca<sup>2+</sup> influx or a direct effect on store release, Ca<sup>2+</sup>-free Hanks solution



**Figure 2.** The effect of high [K<sup>+</sup>]<sub>o</sub> on isolated smooth muscle cells. High [K<sup>+</sup>]<sub>o</sub> caused a transient rise in [Ca<sup>2+</sup>]<sub>i</sub> (A and B) and caused the cell to contract. The results of 12 such experiments are summarized in (C). Basal F/F<sub>0</sub> was increased from 1.0 in control to 4.6 ± 0.7 in high [K<sup>+</sup>]<sub>o</sub>, whereas mean cell length was reduced from 66.2 ± 6.8 to 36.7 ± 4.4 μm. When [K<sup>+</sup>]<sub>o</sub> was restored to control concentrations, cells relaxed but not quite to control levels.

was used to prevent  $Ca^{2+}$  influx across the plasma membrane. Figure 3A displays a pseudo-line scan from such an experiment. When external  $[K^+]_o$  was raised from 5.8 to 60 mmol/L, the frequency of  $Ca^{2+}$  waves was increased and this effect was abolished when external  $Ca^{2+}$  was removed from the bathing solution. The effects of  $Ca^{2+}$ -free Hanks on the high  $[K^+]_o$  effect are summarized in Figure 3C. The frequency of waves was increased from  $10.7 \pm 4.4 \text{ min}^{-1}$  in control to  $23.3 \pm 5 \text{ min}^{-1}$  in high  $[K^+]_o$  ( $P < 0.05$ , ANOVA,  $n = 4$ ), and this was reduced to  $1.6 \pm 1.6 \text{ min}^{-1}$  when  $Ca^{2+}$  was removed from the external solution ( $P < 0.01$ , ANOVA,  $n = 4$ ), suggesting that the response was dependent on  $Ca^{2+}$  influx.



**Figure 3.** The effect of  $Ca^{2+}$ -free Hanks solution on high  $[K^+]_o$ -induced  $Ca^{2+}$  oscillations in ICC. (A, B) The increase in frequency in response to raised  $[K^+]_o$  depends on external  $Ca^{2+}$ . (C) Summary of four such experiments.

### The effect of low $[Na^+]_o$

In order to prepare the high  $[K^+]_o$  solution for the above experiments, NaCl was removed from normal Hanks solution and replaced with KCl. Thus, the  $[Na^+]_o$  was decreased from 130 to 75 mmol/L. However, it is known that decreasing  $[Na^+]_o$  from 130 to 13 mmol/L increases the frequency of spontaneous  $Ca^{2+}$  waves in ICC (Bradley et al. 2006). To ensure that the increase in  $Ca^{2+}$  wave frequency was due to the high  $[K^+]_o$  and not low  $[Na^+]_o$ , control experiments were performed in which the  $[K^+]_o$  was maintained at control levels (5.8 mmol/L) and the  $[Na^+]_o$  was decreased to 75 mmol/L and replaced with equimolar *N*-methyl *D*-glucamine (NMDG). A typical experiment using this protocol in ICC is shown in Figure 4A. Summarized data for eight such experiments are shown in Figure 4C. When  $[Na^+]_o$  was lowered in this way, the frequency of  $Ca^{2+}$  waves increased from  $2.8 \pm 0.3$  in control to  $4.7 \pm 1.1 \text{ min}^{-1}$  in 75 mmol/L  $Na^+$ , but this was not significant (ANOVA). Subsequent addition of 60 mmol/L  $K^+$  solution significantly increased the frequency of  $Ca^{2+}$  waves to  $8.6 \pm 1.9 \text{ min}^{-1}$  ( $P < 0.05$ , ANOVA). Thus, it seemed that lowering  $[Na^+]_o$  to 75 mmol/L alone was insufficient to significantly increase wave frequency.

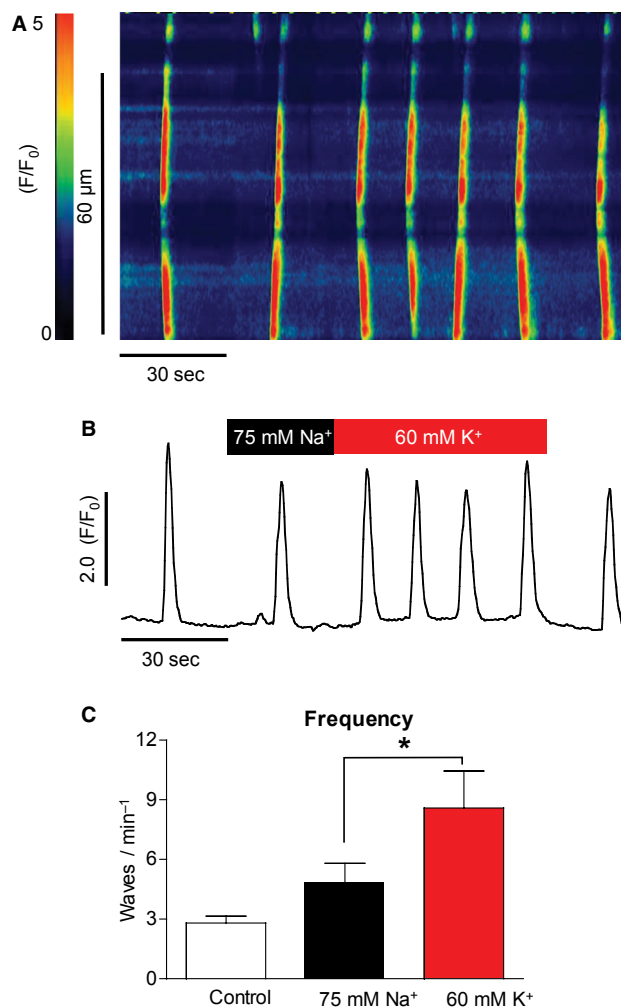
The above protocol was then repeated on SMCs; a representative experiment is shown in Figure 5A. Decreasing  $[Na^+]_o$  from 130 to 75 mmol/L with  $Na^+$  replaced with NMDG did not cause a significant rise in  $[Ca^{2+}]_i$ . Summary data in Figure 5C show that in a total of six cells, the basal  $F/F_0$  under 75 mmol/L  $Na^+$  conditions was not significantly affected ( $1$  to  $1 \pm 0.1$ , ANOVA). When  $[K^+]_o$  was then increased to 60 mmol/L, the  $F/F_0$  increased to  $5.1 \pm 0.8$  ( $P < 0.001$ , ANOVA). Similarly, decreasing  $[Na^+]_o$  to 75 mmol/L did not affect the cell length; however, when  $[K^+]_o$  was raised to 60 mmol/L the cell contracted from  $59.2 \pm 7.5$  to  $32.5 \pm 2.9 \mu\text{m}$  ( $P < 0.01$ , ANOVA).

### Role of L-type $Ca^{2+}$ channels

Application of high  $[K^+]_o$  would presumably depolarize ICC and could activate voltage-gated  $Ca^{2+}$  channels. Their activation could enhance influx and consequently increase wave frequency. To test this, we examined the effect of nifedipine on the response. When  $1 \mu\text{mol/L}$  nifedipine was applied, the increased wave frequency in response to high  $K^+$  was not significantly reduced. Summarized data for five such experiments in Figure 6C show that the frequency of high  $K^+$ -induced waves was not significantly reduced ( $8.5 \pm 1.5$  to  $6.8 \pm 1.5 \text{ min}^{-1}$ , ns, ANOVA).

The above results from ICC were in contrast to those found in urethral SMCs. Figure 7A shows a typical exper-





**Figure 4.** The effect of 75 mmol/L [Na<sup>+</sup>]<sub>o</sub> on oscillation frequency (A & B). There was a small increase in oscillation frequency on reduction in [Na<sup>+</sup>]<sub>o</sub>, but this was not significant; whereas the subsequent addition of 60 mmol/L [K<sup>+</sup>]<sub>o</sub> did result in a significant frequency increase (C) ( $n = 8$ ,  $P < 0.05$ ).

iment with a SMC in which high [K<sup>+</sup>]<sub>o</sub> caused a rise in [Ca<sup>2+</sup>]<sub>i</sub> and this was substantially attenuated by 1 μmol/L nifedipine. Summarized data in Figure 7C show that in eight SMCs the F/F<sub>0</sub> increase induced by high K<sup>+</sup> was reduced from 5 ± 0.6 to 1.5 ± 0.2 F/F<sub>0</sub> by nifedipine ( $P < 0.001$ , ANOVA).

### Role of T-type Ca<sup>2+</sup> channels

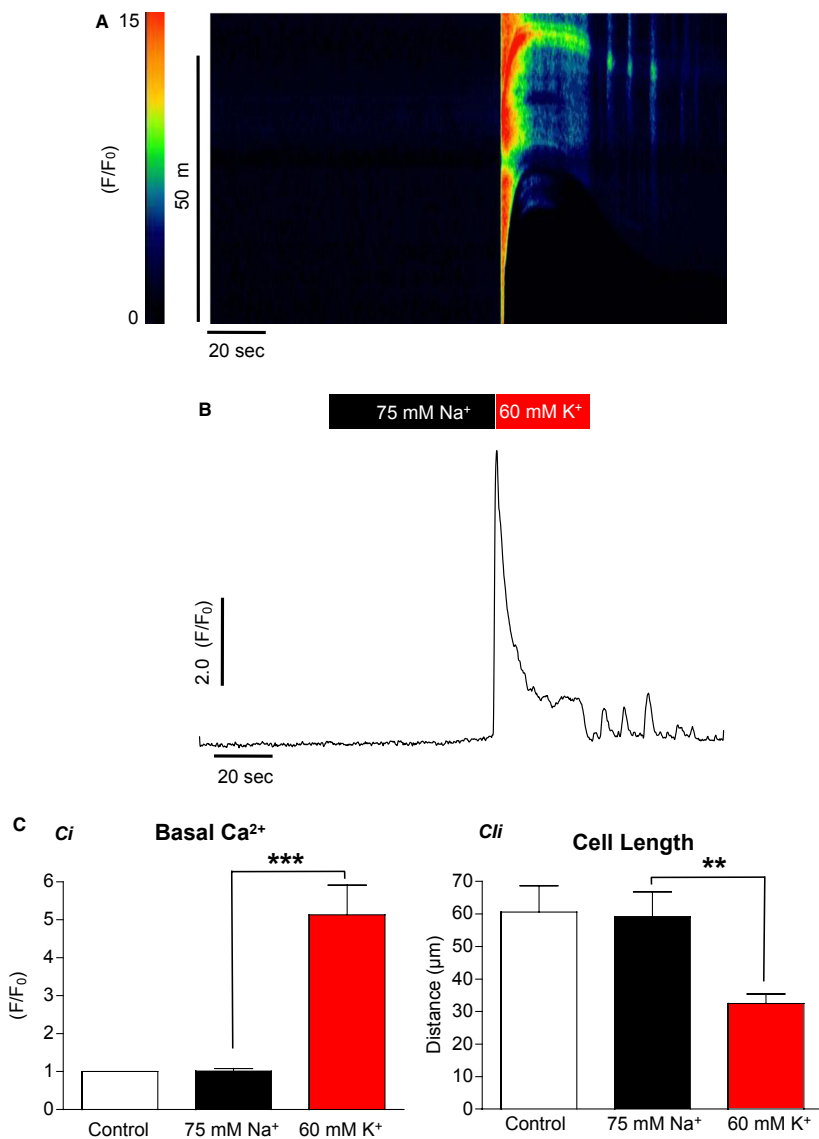
The above results indicated that L-type channels did not play a major role in mediating the high K<sup>+</sup> response in ICC. However, another possible mechanism was Ca<sup>2+</sup> influx via the voltage-dependent T-type Ca<sup>2+</sup> channel. When 30 μmol/L NiCl<sub>2</sub> (a known blocker of T-type channels) was applied to ICC as shown in Figure 8A, the high K<sup>+</sup> effect was inhibited. Summary data in Figure 8C show that 30 μmol/L NiCl<sub>2</sub> significantly reduced the frequency

of waves in high [K<sup>+</sup>]<sub>o</sub> conditions from 5.5 ± 1 to 1.9 ± 0.3 min<sup>-1</sup> ( $P < 0.01$ , ANOVA,  $n = 4$ ).

However, when a more specific T-type channel blocker mibefradil (300 nmol/L) was applied (Fig. 9A), the high K<sup>+</sup> response in ICC was not significantly reduced. This is summarized in Figure 9B; the frequency of Ca<sup>2+</sup> waves under high [K<sup>+</sup>]<sub>o</sub> was little changed (7.6 ± 1.6 to 7.7 ± 1.5 min<sup>-1</sup> in mibefradil, ns, ANOVA,  $n = 4$ ).

### Role of reverse-mode sodium/calcium exchange

Ni<sup>2+</sup> significantly reduced the frequency of waves in high [K<sup>+</sup>]<sub>o</sub> conditions and the results in Figure 9 suggested that the inhibitory effect of NiCl<sub>2</sub> was due to a mechanism other than that of blocking T-type channels. NiCl<sub>2</sub> is also known to block sodium/calcium exchange (NCX)



**Figure 5.** The effect of 75 mmol/L  $[Na^+]_o$  on urethral smooth muscle cells (A & B). Reduction in  $[Na^+]_o$  to 75 mmol/L did not increase the calcium signal nor did it cause the cells to contract. This was in contrast to the effects of increasing  $[K^+]_o$  to 60 mmol/L (C) ( $n = 6$ ,  $**P < 0.01$ ,  $***P < 0.001$ ).

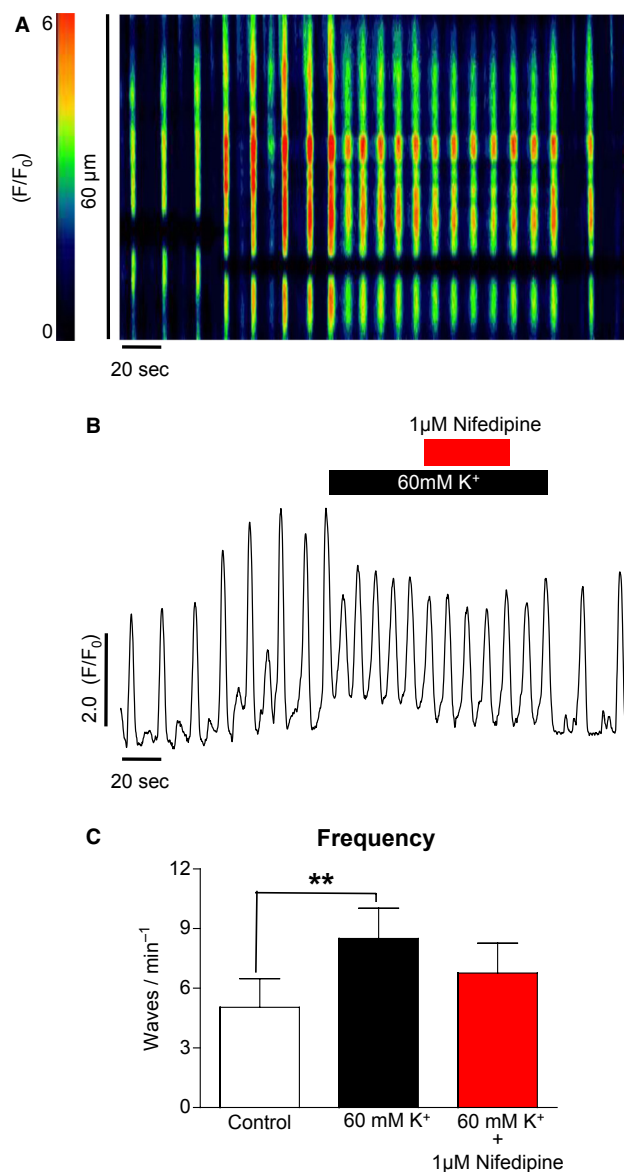
(Blaustein and Lederer 1999). As reverse-mode NCX has been indicated to be an important  $Ca^{2+}$  influx pathway in urethral ICC (Bradley et al. 2006), it was decided to investigate this pathway as a mediator of the high  $K^+$  response.

Figure 10A shows the effect of high  $[K^+]_o$  before and after addition of the NCX reverse-mode blocker SEA0400 (Hotta et al. 2007) ( $1 \mu\text{mol/L}$ ). Addition of the latter drug completely reversed the high  $[K^+]_o$ -induced frequency increase. This is summarized in Figure 10C;  $Ca^{2+}$  wave frequency under high  $[K^+]_o$  conditions was reduced from  $9 \pm 0.7$  to  $5.6 \pm 1.1 \text{ min}^{-1}$  by SEA0400 ( $P < 0.05$ , ANOVA,  $n = 6$ ).

Figure 11A shows that the specific reverse-mode NCX inhibitor KB-R7943 had a similar effect on the high  $[K^+]_o$  response in ICC. The increase in  $Ca^{2+}$  wave frequency was completely reversed by KB-R7943. Summary data in Figure 11C show that KB-R reduced the high  $K^+$ -induced frequency of waves from  $11.3 \pm 2.5$  to  $4.3 \pm 1.6 \text{ min}^{-1}$  ( $P < 0.001$ , ANOVA,  $n = 6$ ).

## Discussion

The results from this study demonstrate that the frequency of spontaneous  $Ca^{2+}$  oscillations in rabbit urethral ICC was significantly increased by high  $[K^+]_o$  solutions.



**Figure 6.** The effect of nifedipine on high [K<sup>+</sup>]<sub>o</sub>-induced Ca<sup>2+</sup> oscillations in ICC (A & B). Nifedipine (1 μmol/L) caused only a small reduction in frequency in the presence of high [K<sup>+</sup>]<sub>o</sub>. In five such experiments, the reduction was not significant (C).

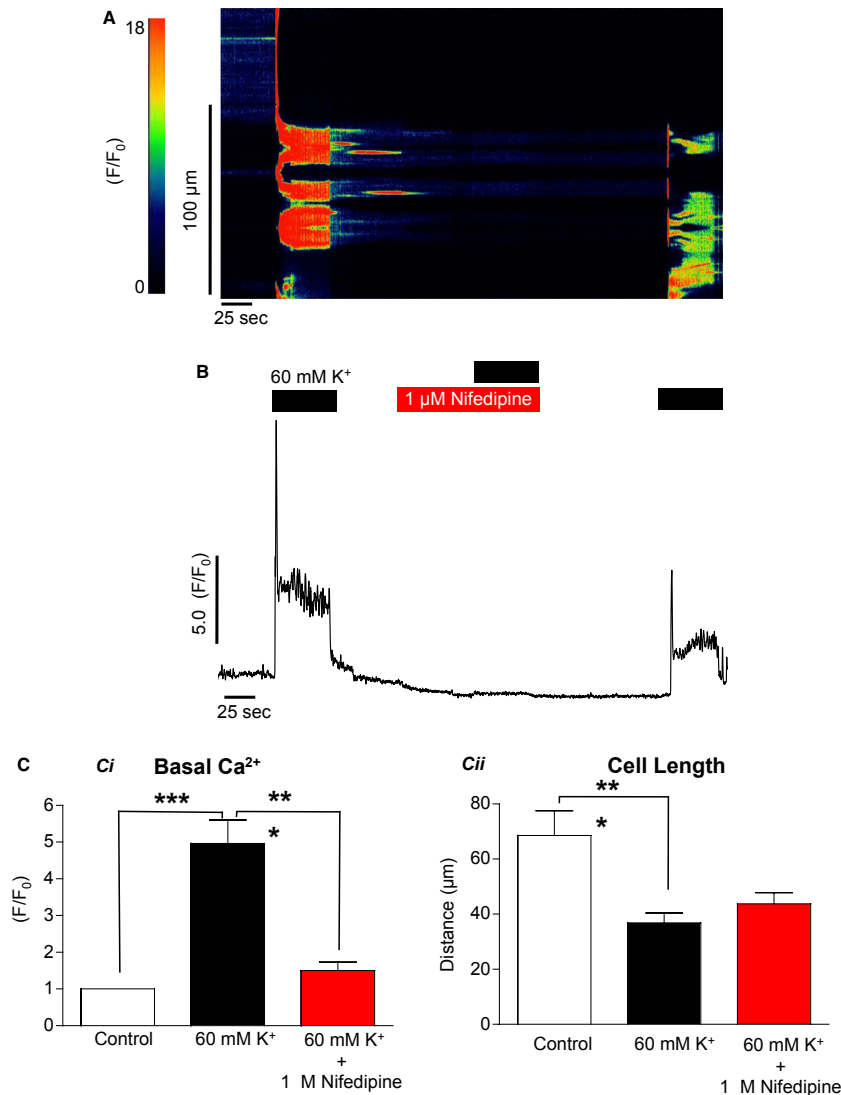
In agreement with our observations, increasing [K<sup>+</sup>]<sub>o</sub> to 60 mmol/L in ICC from rabbit portal vein caused a transient increase in [Ca<sup>2+</sup>]<sub>i</sub> and also contracted SMCs from the same tissue (Povstyan *et al.* 2003).

The 60 mmol/L K<sup>+</sup> solution used in this study involved substituting K<sup>+</sup> for Na<sup>+</sup>. It has been shown in previous studies that lowering [Na<sup>+</sup>]<sub>o</sub> to 13 mmol/L can itself increase the frequency of Ca<sup>2+</sup> oscillations in urethral ICC (Bradley *et al.* 2006). However, when ICC were bathed in a 75 mmol/L [Na<sup>+</sup>]<sub>o</sub> solution only a slight increase in wave frequency was observed and this was not significant. Similarly, in SMCs 75 mmol/L [Na<sup>+</sup>]<sub>o</sub> did not induce a

rise in Ca<sup>2+</sup> or cause contraction of the cell. Lowering the [Na<sup>+</sup>]<sub>o</sub> to 75 mmol/L (with NMDG substitution) will increase the driving force for calcium (as a result of making E<sub>NCX</sub> more negative), but the present results suggest that this is not sufficient to significantly increase calcium influx either in ICC or SMCs. Replacing the [Na<sup>+</sup>]<sub>o</sub> with K<sup>+</sup>, on the other hand, has a much greater effect on driving force (affecting both E<sub>NCX</sub> and membrane potential) with the observed significant effects on calcium influx in both cell types.

Elevation of [K<sup>+</sup>]<sub>o</sub> appeared to increase the frequency of oscillations by increasing Ca<sup>2+</sup> influx into the cells.





**Figure 7.** The effect of nifedipine on high  $[K^+]_o$ -induced contraction in isolated smooth muscle cells (A & B). In contrast to the effects seen in ICC, nifedipine was very effective in blocking the increase in  $[Ca^{2+}]_i$  and the contraction elicited by high  $[K^+]_o$  (C) ( $n = 8$ ,  $***P < 0.001$ ).

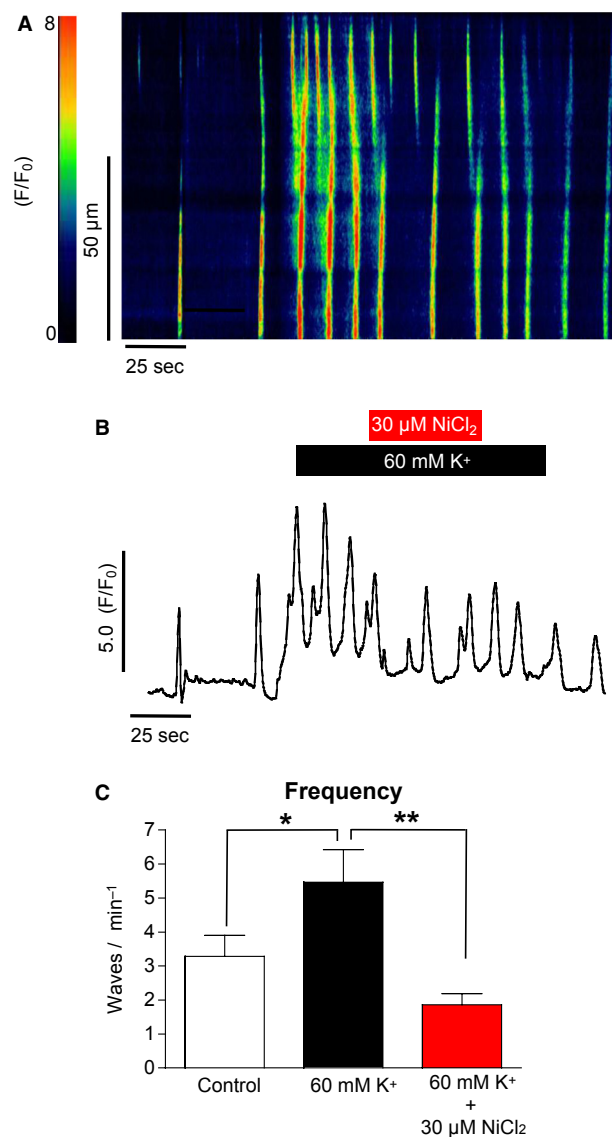
This was supported by the fact that removal of  $Ca^{2+}$  from the external bathing solution abolished the high  $K^+$  effect. These data demonstrated that the high  $K^+$  effect on  $Ca^{2+}$  waves was via increased  $Ca^{2+}$  influx and not a direct effect on ER store release. The pathway for  $Ca^{2+}$  influx was then investigated pharmacologically.

$Ca^{2+}$  influx through L-type channels was a major contributor to the high  $[K^+]_o$  effect in SMCs but not in ICC. Blocking the channels with nifedipine abolished the high  $[K^+]_o$  effect in SMCs but not in ICC. Previous work from our laboratory showed that  $Ca^{2+}$  influx in ICC through L-type  $Ca^{2+}$  channels has little effect on  $Ca^{2+}$  waves (Johnston et al. 2005) and this was further supported by our study.

When  $30 \mu mol/L Ni^{2+}$  was used to block T-channels, the burst of oscillations induced by high  $[K^+]_o$  was

significantly inhibited and wave frequency reverted to near control levels. These experiments suggested that the T-type  $Ca^{2+}$  channel may play a role in mediating  $Ca^{2+}$  influx in ICC. However, when a more specific T-type channel blocker, mibefradil (Strege et al. 2005), was applied, the frequency of oscillations only slightly decreased suggesting that  $Ni^{2+}$  may have acted by inhibiting another pathway.

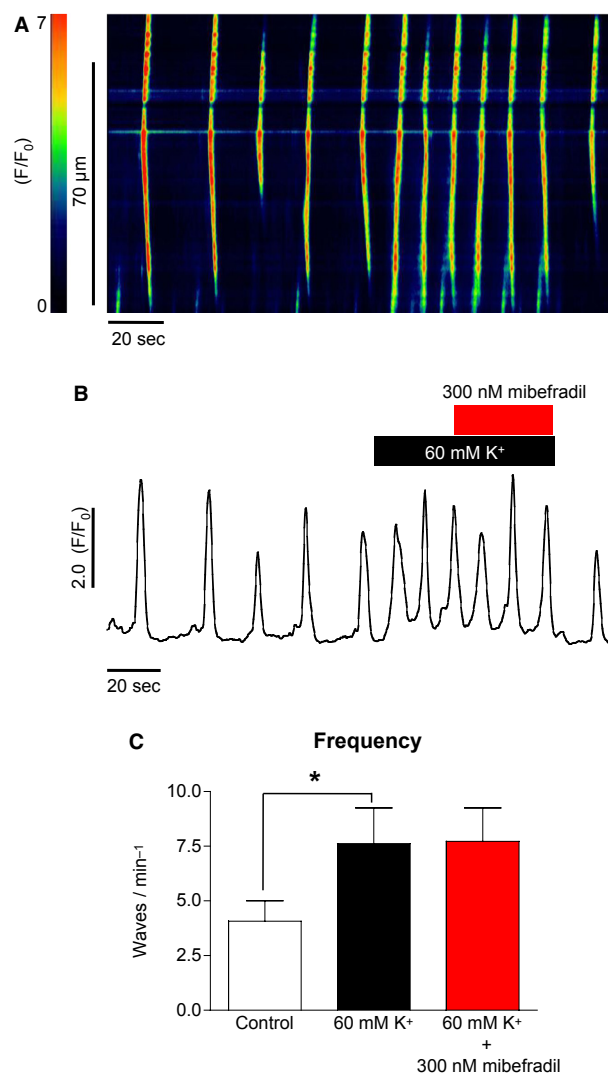
$Ni^{2+}$  is also known to be a nonselective blocker of NCX (Rebolledo et al. 2005). NCX is normally thought of as a  $Ca^{2+}$  extrusion mechanism, however, it is known to act as a bidirectional antiporter (Blaustein and Lederer 1999). Reverse-mode NCX has been previously demonstrated to be an important  $Ca^{2+}$  entry pathway in many cell types including ventricular myocytes (Laflamme and



**Figure 8.** The effect of NiCl<sub>2</sub> on high [K<sup>+</sup>]<sub>o</sub>-induced Ca<sup>2+</sup> oscillations in ICC (A & B). The increase in oscillation frequency in response to high [K<sup>+</sup>]<sub>o</sub> was significantly depressed by NiCl<sub>2</sub>, suggesting a possible role for influx via T-type channels. (C) Summary of four such experiments (\**P* < 0.05, \*\**P* < 0.01).

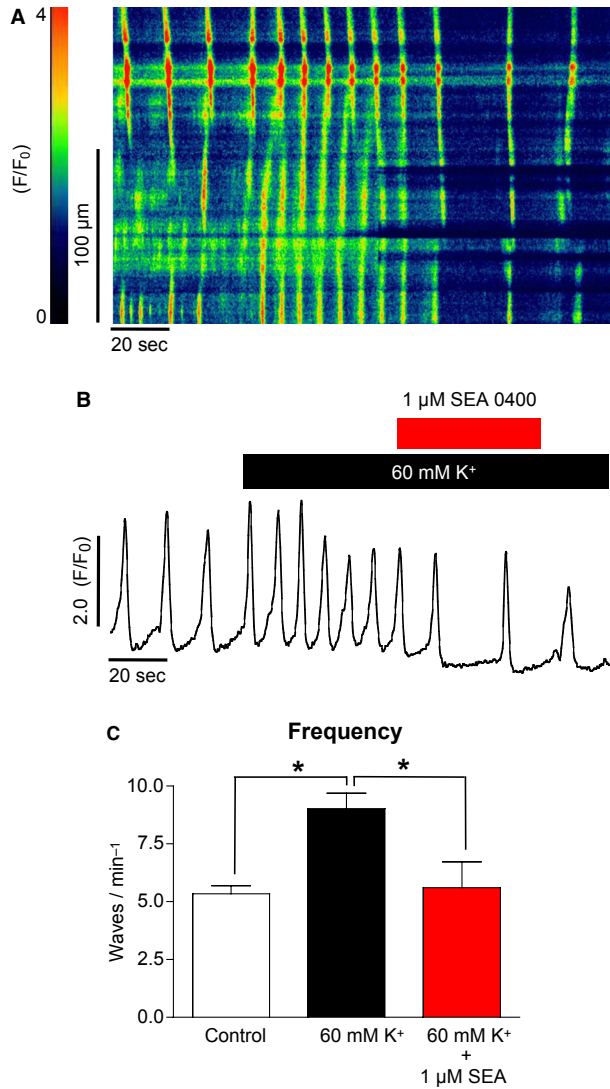
Becker 1996), dog and ferret erythrocytes (Blaustein and Lederer 1999), detrusor SMCs (Wu and Fry 2001), human bone marrow-derived mesenchymal stem cells (Kawano et al. 2003), HEK 293 cells (Rosker et al. 2004), human umbilical artery myocytes (Rebolledo et al. 2005), pulmonary arteriole myocytes (Zhang et al. 2005), and murine portal vein myocytes (Saleh et al. 2005).

Reverse-mode NCX has also been indicated as a major Ca<sup>2+</sup> influx pathway in urethral ICC (Bradley et al. 2006) and also ICC from the murine small intestine where



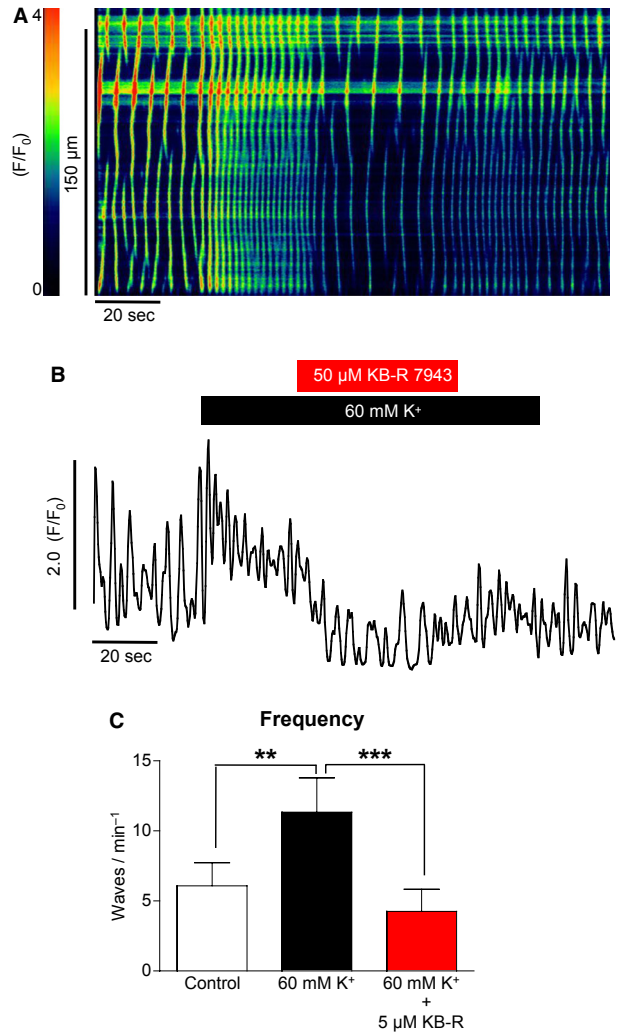
**Figure 9.** The effect of mibefradil on high [K<sup>+</sup>]<sub>o</sub>-induced Ca<sup>2+</sup> oscillations in ICC (A & B). Application of the specific T-type channel blocker mibefradil (A) did not significantly depress the high K<sup>+</sup> response in ICC (C) (*n* = 4).

whole-tissue imaging demonstrated that Ca<sup>2+</sup> oscillations were blocked by KB-R7943 but not by nifedipine or mibefradil (Lowie et al. 2011). This latter study also used immunolabeling of IP<sub>3</sub>R<sub>s</sub> and NCX to show that both proteins were highly expressed in ICC, suggesting that they formed a microdomain and that influx via reverse-mode NCX regulated ICC Ca<sup>2+</sup> signaling via modulation of IP<sub>3</sub>R<sub>s</sub>. Under our experimental conditions, E<sub>NCX</sub> has been calculated at -72 mV and membrane potentials positive to this value would result in the exchanger switching to reverse mode and allowing Ca<sup>2+</sup> influx rather than extrusion. If we assume that intracellular sodium was to oscillate between 10 and 20 mmol/L, then E<sub>NCX</sub>



**Figure 10.** The effect of SEA0400 on high  $[K^+]_o$ -induced  $Ca^{2+}$  oscillations in ICC (A & B). The increase in oscillation frequency in response to high  $[K^+]_o$  was significantly depressed by the reverse-mode NCX blocker SEA0400. (C) Summary of six such experiments ( $*P < 0.05$ ).

would vary from  $-53$  to  $-84$  mV (assuming a constant intracellular  $Ca^{2+}$  of 1 nmol/L). This means that, if we neglect changes in other ion concentrations, NCX would sometimes be in forward and sometimes in reverse mode. The membrane potential of urethral ICC and SMC has been estimated to be approximately  $-60$  mV (Bradley et al. 2006). In this study we calculated that if ICC and SMC had a resting membrane potential of  $-60$  mV, increasing  $[K^+]_o$  from 5.8 to 60 mmol/L would shift this potential from  $-60$  to  $-22$  mV. This shift brought the membrane potential of the cell into the window of L-type channel activation. The activation of L-type channels



**Figure 11.** The effect of KB-R7943 on high  $[K^+]_o$ -induced  $Ca^{2+}$  oscillations in ICC (A & B). The increase in oscillation frequency in response to high  $[K^+]_o$  was also significantly depressed by KB-R7943, suggesting a role for reverse-mode NCX as a calcium influx pathway. (C) Summary of six such experiments ( $**P < 0.01$ ,  $***P < 0.001$ ).

could then lead to increased influx and this mechanism would explain the effects of high  $[K^+]_o$  seen in urethral SMCs. However, the high  $[K^+]_o$  effect seen in urethral ICC was not due to influx through L-type channels. Shifting the membrane potential of ICC from  $-60$  to  $-22$  mV would also increase the driving force of reverse-mode NCX as the membrane potential moves positively away from  $E_{NCX}$ . When specific blockers of reverse-mode NCX such as SEA0400 (Matsuda et al. 2001) and KB-R7943 were applied to ICC, the high  $[K^+]_o$  effect was inhibited and oscillation frequency returned to control levels. This supports the view that in urethral ICC the

effects of high [K<sup>+</sup>]<sub>o</sub> were due to increased Ca<sup>2+</sup> influx via reverse-mode NCX.

In conclusion, we have shown that urethral ICC have very different properties from those of urethral SMCs. Thus, raising [K<sup>+</sup>]<sub>o</sub> causes an influx of Ca<sup>2+</sup> through L-type calcium channels in SMCs and this is followed by cell contraction. This is in contrast to the response in urethral ICC, where high [K<sup>+</sup>]<sub>o</sub> increases the frequency of Ca<sup>2+</sup> oscillations by increasing Ca<sup>2+</sup> influx across the plasma membrane. Our results suggest that the main influx pathway for this latter effect is reverse-mode NCX.

## Acknowledgments

The studies using SEA0400 were done in collaboration with Professor Matsuda and Doctor Baba of Osaka University.

## Conflict of Interest

None declared.

## References

- Blaustein, M. P., and W. J. Lederer. 1999. Sodium/calcium exchange: its physiological implications. *Physiol. Rev.* 79:763–854.
- Bradley, J. E., M. A. Hollywood, L. Johnston, R. J. Large, T. Matsuda, A. Baba, et al. 2006. Contribution of reverse Na<sup>+</sup>-Ca<sup>2+</sup> exchange to spontaneous activity in interstitial cells of Cajal in the rabbit urethra. *J. Physiol.* 574: 651–661.
- Hashitani, H., and F. R. Edwards. 1999. Spontaneous and neurally activated depolarizations in smooth muscle cells of the guinea-pig urethra. *J. Physiol.* 514: 459–470.
- Hashitani, H., D. F. Van Helden, and H. Suzuki. 1996. Properties of spontaneous depolarizations in circular smooth muscle cells of rabbit urethra. *Br. J. Pharmacol.* 118:1627–1632.
- Hotta, A., N. Okada, and H. Suzuki. 2007. Mibefradil-sensitive component involved in the plateau potential in submucosal interstitial cells of the murine proximal colon. *Biochem. Biophys. Res. Commun.* 353:170–176.
- Johnston, L., G. P. Sergeant, M. A. Hollywood, K. D. Thornbury, and N. G. McHale. 2005. Calcium oscillations in interstitial cells of the rabbit urethra. *J. Physiol.* 565:449–461.
- Kawano, S., K. Otsu, S. Shoji, K. Yamagata, and M. Hiraoka. 2003. Ca<sup>2+</sup> oscillations regulated by Na<sup>+</sup>-Ca<sup>2+</sup> exchanger and plasma membrane Ca<sup>2+</sup> pump induce fluctuations of membrane currents and potentials in human mesenchymal stem cells. *Cell Calcium.* 34:145–156.
- Laflamme, M. A., and P. L. Becker. 1996. Ca<sup>2+</sup>-induced current oscillations in rabbit ventricular myocytes. *Circ. Res.* 78:707–716.
- Lowie, B. J., X. Y. Wang, E. J. White, and J. D. Huizinga. 2011. On the origin of the rhythmic calcium transients in the ICC-MP of the mouse small intestine. *Am. J. Physiol. Gastrointest. Liver Physiol.* 301:G835–G845.
- Matsuda, T., N. Arakawa, K. Takuma, Y. Kishida, Y. Kawasaki, M. Sakaue, et al. 2001. SEA0400, a novel and selective inhibitor of the Na<sup>+</sup>-Ca<sup>2+</sup> exchanger, attenuates reperfusion injury in the in vitro and in vivo cerebral ischemic models. *J. Pharmacol. Exp. Ther.* 298:249–256.
- Povstyan, O. V., D. V. Gordienko, M. I. Harhun, and T. B. Bolton. 2003. Identification of interstitial cells of Cajal in the rabbit portal vein. *Cell Calcium* 33: 223–239.
- Rebolledo, A., F. Speroni, J. Raingo, S. V. Salemme, F. Tanzi, V. Munin, et al. 2005. The Na<sup>+</sup>/Ca<sup>2+</sup> exchanger is active and working in the reverse mode in human umbilical artery smooth muscle cells. *Biochem. Biophys. Res. Commun.* 339:840–845.
- Rosker, C., A. Graziani, M. Lukas, P. Eder, M. X. Zhus, C. Romanin, et al. 2004. Ca<sup>2+</sup> signaling by TRP3 involves Na<sup>+</sup> entry and local coupling to the Na<sup>+</sup>/Ca<sup>2+</sup> exchanger. *J. Biol. Chem.* 279:13696–13704.
- Saleh, S. N., S. Y. Yeung, S. N. Prestwich, V. Pucovsky, and I. A. Greenwood. 2005. Electrophysiological and molecular identification of voltage-gated sodium channels in murine vascular myocytes. *J. Physiol.* 568:155–169.
- Sanders, K. M. 1996. A case for interstitial cells of Cajal as pacemakers and mediators of neurotransmission in the gastrointestinal tract. *Gastroenterology* 111: 492–515.
- Sanders, K. M., S. D. Koh, and S. M. Ward. 2006. Interstitial cells of Cajal as pacemakers in the gastrointestinal tract. *Ann. Rev. Physiol.* 68:17.1–17.37.
- Sergeant, G. P., M. A. Hollywood, K. D. McCloskey, K. D. Thornbury, and N. G. McHale. 2000. Specialised pace-making cells in the rabbit urethra. *J. Physiol.* 526:359–366.
- Sergeant, G. P., M. A. Hollywood, N. G. McHale, and K. D. Thornbury. 2001a. Spontaneous Ca<sup>2+</sup> activated Cl<sup>-</sup> currents in isolated urethral smooth muscle cells. *J. Urol.* 166:1161–1166.
- Sergeant, G. P., M. A. Hollywood, K. D. McCloskey, N. G. McHale, and K. D. Thornbury. 2001b. Role of IP<sub>3</sub> in modulation of spontaneous activity in pacemaker cells of rabbit urethra. *Am. J. Physiol. Cell Physiol.* 280:C1349–C1356.
- Sergeant, G. P., M. A. Hollywood, N. G. McHale, and K. D. Thornbury. 2006a. Ca<sup>2+</sup> signalling in urethral interstitial cells of Cajal. *J. Physiol.* 576: 715–720.

- Sergeant, G. P., L. Johnston, N. G. McHale, K. D. Thornbury, and M. A. Hollywood. 2006b. Activation of cGMP/PKG pathway inhibits electrical activity in rabbit urethral interstitial cells of Cajal by reducing the spread of Ca<sup>2+</sup> waves. *J. Physiol.* 574:167–181.
- Strege, P. R., C. E. Bernard, Y. Ou, S. J. Gibbons, and G. Farrugia. 2005. Effect of miberfrail on sodium and calcium currents. *Am. J. Physiol. Gastrointest. Liver Physiol.* 289:G249–G253.
- Wu, C., and C. H. Fry. 2001. Na<sup>+</sup>/Ca<sup>2+</sup> exchange and its role in intracellular Ca<sup>2+</sup> regulation in guinea pig detrusor smooth muscle. *Am. J. Physiol. Cell Physiol.* 280: C1090–C1096.
- Zhang, S., J. X. Yuan, K. E. Barret, and H. Dong. 2005. Role of Na<sup>+</sup>/Ca<sup>2+</sup> exchange in regulating cytosolic Ca<sup>2+</sup> in cultured human pulmonary artery smooth muscle cells. *Am. J. Physiol. Cell Physiol.* 288: C245–C252.