



Cranial Irradiation Alters the Brain's Microenvironment and Permits CCR2⁺ Macrophage Infiltration

Josh M. Morganti^{1,2}, Timothy D. Jopson^{1,2}, Sharon Liu³, Nalin Gupta³, Susanna Rosi^{1,2,3*}

1 Brain and Spinal Injury Center, University of California San Francisco, San Francisco, California, United States of America, **2** Departments of Physical Therapy and Rehabilitation Science, University of California San Francisco, San Francisco, California, United States of America, **3** Neurological Surgery, University of California San Francisco, San Francisco, California, United States of America

Abstract

Therapeutic irradiation is commonly used to treat primary or metastatic central nervous system tumors. It is believed that activation of neuroinflammatory signaling pathways contributes to the development of common adverse effects, which may ultimately contribute to cognitive dysfunction. Recent studies identified the chemokine (C-C motif) receptor (CCR2), constitutively expressed by cells of the monocyte-macrophage lineage, as a mediator of cognitive impairments induced by irradiation. In the present study we utilized a unique reporter mouse (CCR2^{RFP/+}CX3CR1^{GFP/+}) to accurately delineate the resident (CX3CR1⁺) versus peripheral (CCR2⁺) innate immune response in the brain following cranial irradiation. Our results demonstrate that a single dose of 10Gy cranial γ -irradiation induced a significant decrease in the percentage of resident microglia, while inducing an increase in the infiltration of peripherally derived CCR2⁺ macrophages. Although reduced in percentage, there was a significant increase in F4/80⁺ activated macrophages in irradiated animals compared to sham. Moreover, we found that there were altered levels of pro-inflammatory cytokines, chemokines, adhesion molecules, and growth factors in the hippocampi of wild type irradiated mice as compared to sham. All of these molecules are implicated in the recruitment, adhesion, and migration of peripheral monocytes to injured tissue. Importantly, there were no measurable changes in the expression of multiple markers associated with blood-brain barrier integrity; implicating the infiltration of peripheral CCR2⁺ macrophages may be due to inflammatory induced chemotactic signaling. Cumulatively, these data provide evidence that therapeutic levels of cranial radiation are sufficient to alter the brain's homeostatic balance and permit the influx of peripherally-derived CCR2⁺ macrophages as well as the regional susceptibility of the hippocampal formation to ionizing radiation.

Citation: Morganti JM, Jopson TD, Liu S, Gupta N, Rosi S (2014) Cranial Irradiation Alters the Brain's Microenvironment and Permits CCR2⁺ Macrophage Infiltration. PLoS ONE 9(4): e93650. doi:10.1371/journal.pone.0093650

Editor: Eric Y. Chuang, National Taiwan University, Taiwan

Received: October 2, 2013; **Accepted:** March 8, 2014; **Published:** April 2, 2014

Copyright: © 2014 Morganti et al. This is an open-access article distributed under the terms of the Creative Commons Attribution License, which permits unrestricted use, distribution, and reproduction in any medium, provided the original author and source are credited.

Funding: This work was supported by the NIH-NCI R01 CA133216 (SR) and the Pediatric Brain Tumor Foundation (NG). The funders had no role in study design, data collection and analysis, decision to publish, or preparation of the manuscript.

Competing Interests: The authors have declared that no competing interests exist.

* E-mail: rosis@ptrehab.ucsf.edu

Introduction

Ionizing radiation is commonly used to treat both primary and metastatic brain tumors and can cause a number of late effects including progressive cognitive dysfunction [1]. Specifically, irradiation of the temporal lobe can profoundly affect the cellular structures mediating learning and memory [2–4]. Ionizing radiation has been consistently shown to affect multiple neuroinflammatory signaling cascades [5–7] ultimately causing disruptions in hippocampal function [3–5,8,9]. Importantly, broad-spectrum anti-inflammatory treatment has been shown to abrogate certain aspects of radiation-induced hippocampal functional deficits [4,9]. We have recently shown that radiation-induced disruption in neuronal networks associated with learning and memory as well as inflammatory response are blunted in CCR2-deficient mice following cranial radiation [10]. Previously, CCR2 has been shown to be expressed on neurons and glia [11,12], although more recent evidence suggests that CCR2 is expressed predominantly on blood-born monocytes and macrophages rather than resident cells in the central nervous system (CNS) [13–17].

Monocytes are important mediators of innate immune function given their ability to differentiate into tissue macrophages [18–20].

Recent work has demonstrated that monocytes can be divided into two distinct subpopulations based upon expression of specific cell surface antigens. Notably, these are termed 'inflammatory' (Ly-6C^{hi}CCR2⁺CX3CR1[−]) and 'circulating' (Ly-6C^{lo}CCR2[−]CX3CR1⁺) monocytes. Monocytes expressing the chemokine receptor CCR2 (i.e. inflammatory monocytes) are able to migrate from bone marrow, infiltrate injured tissues where they become macrophages, and produce high levels of pro-inflammatory cytokines [18,21–23]. It has been shown that the role of these subpopulations may differ between various models of disease [24,25]. Interestingly, blocking CCR2 signaling has been shown to be both neuroprotective or neurotoxic in various animal models of neurodegenerative disease [16,21,26–32].

Multiple studies using different animals models have shown that CNS resident microglia do not express CCR2 *in vivo* [14–17]. Moreover, in a mouse model of stroke using CCR2-deficient mice, there is no difference in resident microglia activation, suggesting that CCR2 does not regulate resident microglial response [33]. Additionally, *in vitro* studies have shown that isolated mouse microglia lack significant expression of CCR2 mRNA [34,35]. However, CCR2 depletion has been shown to affect the emigration of bone-marrow derived monocytes into circulation,

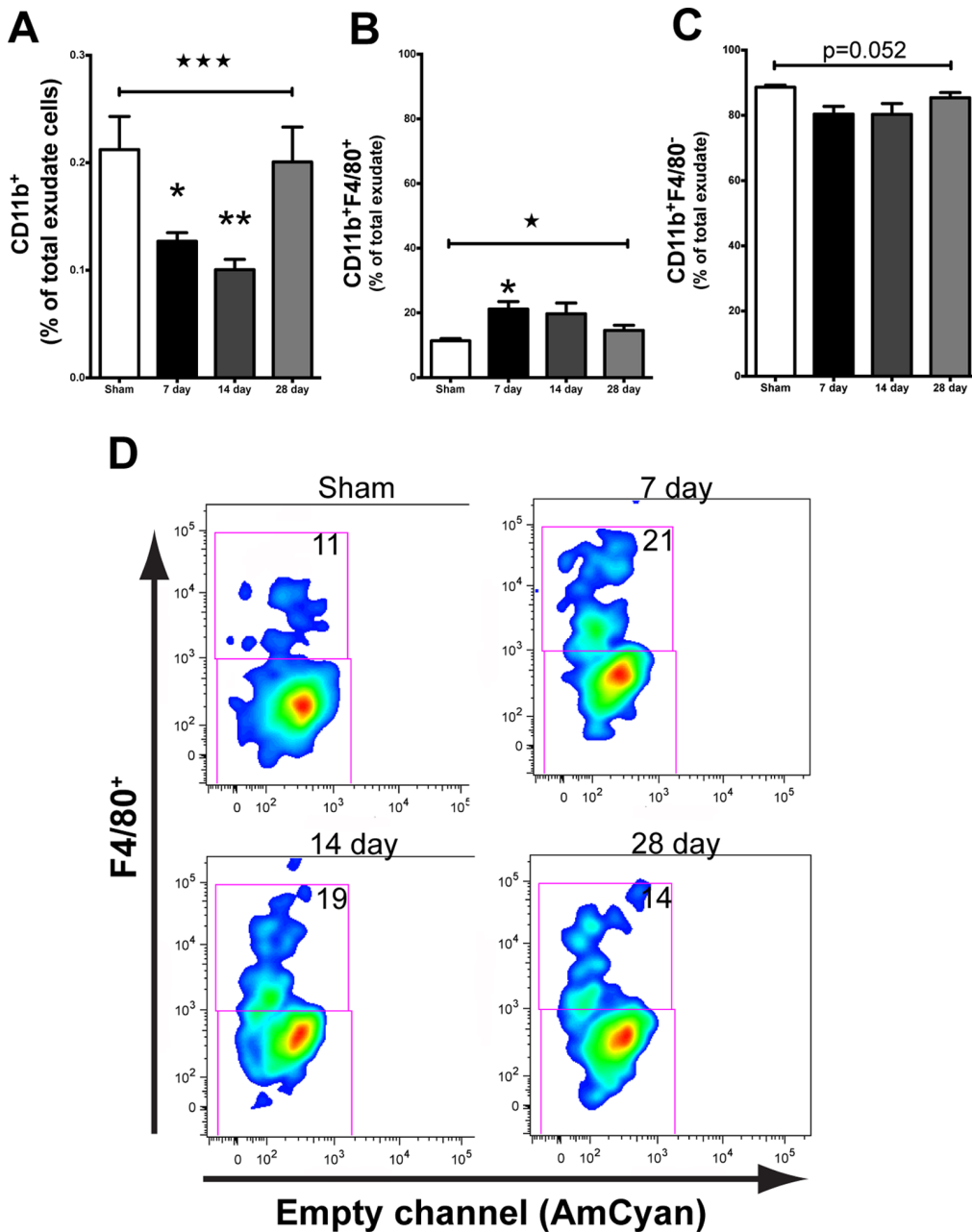


Figure 1. Cranial irradiation alters myeloid cell population over time. **A.** 10 Gy cranial irradiation was associated with a decrease in the proportion of CD11b⁺ cells (ANOVA; $F_{(3,12)} = 12.07$, $***p = 0.0006$) at 7 (Tukey's HSD; $*p < 0.05$) and 14 (Tukey's HSD; $**p < 0.01$) days post irradiation. The percentage of CD11b⁺ cells returned to sham levels by day 28 (Tukey's HSD; $p > 0.05$). **B.** Overall, cranial irradiation induced a significant increase in the percentage of CD11b⁺F4/80⁺ macrophages at 7 days (ANOVA; $F_{(3,12)} = 4.048$, $*p = 0.0335$; Tukey's HSD; $*p < 0.05$). **C.** Concomitant with the radiation induced increase of percentage of F4/80⁺ macrophages, we observed a trend for decreased F4/80⁻ stained cells. **D.** Representative plots showing the 10 Gy radiation induced shift in the percentage of CD11b⁺ cells that stained for F4/80 as a function of time. Average proportion of F4/80⁺ is given.
doi:10.1371/journal.pone.0093650.g001

ultimately reducing the infiltration into CNS tissues in various models of neurological disease [14,17,21,33,36]. Cumulatively, these studies suggest that the expression of CCR2 is predominantly attributed to bone-marrow derived circulating monocytes.

Cranial irradiation induces pleiotropic neuroinflammatory signaling cascades in multiple rodent models [7,37], which can be abrogated by broad spectrum anti-inflammatory treatments [4,9], implicating the innate immune response in the brain. However, the effect of cranial radiation on microglia, the brain's

resident tissue macrophage, remains ambiguous in the context of short-term alterations after irradiation. Moreover, the role of CCR2⁺ macrophage infiltration following cranial irradiation remains unclear.

In the present study we examined the response of resident microglia after cranial irradiation in addition to multiple signaling factors associated with neuroinflammation to determine if irradiation induces a permissive environment for infiltrating CCR2⁺ macrophages. To separate resident microglia from

macrophages derived from circulating monocytes *in vivo*, we utilized a unique reporter mouse ($CCR2^{RFP/+}CX3CR1^{GFP/+}$) to accurately delineate cells based on their expression of either $CX3CR1^+$ or $CCR2^+$ following cranial irradiation. The genotype of these mice allows for characterization by flow cytometry of macrophages derived from a peripheral source ($CCR2^+$) from those derived from cells residing in the CNS ($CX3CR1^+$). Using our established animal model [5,10] in conjunction with flow cytometry and multiple biochemical analyses, our results demonstrate that cranial irradiation (10 Gy) alters the pool of resident microglia as well as multiple pro-inflammatory mediators to create a permissive environment for the infiltration of $CCR2^+$ macrophages into the brain parenchyma.

Methods

Animals

All experiments were conducted in accordance with the National Institutes of Health Guide for the Care and Use of Laboratory Animals and were approved by the Institutional Animal Care and Use Committee of the University of California (San Francisco, CA). Three-month-old male $C57BL/6J$ (WT) and $CCR2^{RFP/+}CX3CR1^{GFP/+}$ mice were used for the proceeding experiments. WT mice were purchased from The Jackson Laboratory. $CCR2^{RFP/+}CX3CR1^{GFP/+}$ mice were generated as previously described [16] and genotype was confirmed using a commercially available service (Transnetyx; Cordova, TN). Mice were group housed in environmentally controlled conditions (12:12 h light:dark cycle at $21\pm 1^\circ\text{C}$) and provided food and water *ad libitum*.

Radiation Procedure

Animals were randomly assigned to receive either cranial radiation or sham procedures, as we have previously described [10]. The eyes and body were shielded by a lead collimator, which limited the beam to a width of 1.0 cm. An additional lead shield was positioned to block exposure to the trachea. Irradiated animals received a beam exposure to both hemispheres at 5 Gy each, for a total of 10 Gy dose to the head. Sham animals were exposed to identical procedures, however radiation was omitted.

Lectin Procedure

Seven days following sham or irradiation procedures a small cohort of mice were injected with 100 μL of 5 mg/mL rhodamine-conjugated lectin (Vector #RL-1082) via the tail vein. Twenty minutes following injection, animals were lethally overdosed with an i.p. injection of ketamine/xylazine to allow transcardial perfusion. Mice were transcardially perfused with buffered saline followed by 4% paraformaldehyde in buffered saline.

Biochemical Analyses Tissue Preparation

Seven days following radiation exposure WT mice were killed via cervical dislocation. Brain tissues encompassing the hippocampus (HPC) were dissected and rapidly frozen in dry ice chilled (-70°C) isopentane before final storage at -80°C . Hippocampi were allocated for either Western blot and ELISA or quantitative reverse transcription PCR (qRT-PCR) analyses. For Western blot and ELISA analyses tissues were prepared as previously described [38]. For qRT-PCR analyses, tissues were homogenized in Qiazol reagent (Qiagen #79306) and RNA was isolated using RNeasy mini-columns (Qiagen #74106) following manufacturer's suggested protocol. One microgram of total RNA was reverse-transcribed

using the High-Capacity cDNA Reverse Transcription Kit (Applied Biosystems #12574035).

Western Blot Analyses

Fifty micrograms of total protein per lane was loaded onto a 4–15% SDS-polyacrylamide gel (Bio-Rad #567–1084) for electrophoresis. Proteins were transferred onto a nitrocellulose membrane for immunodetection. Membranes were subsequently blocked for 1 h in 5% nonfat dry milk (NFDm; Bio-Rad #170–6404) in phosphate buffered saline with Tween20 (PBS-T; 0.1% Tween 20). Antibodies specific for JAM1 (Millipore #04–593, 1:500), ZO-1 (Invitrogen #40–2200, 1:500), PECAM1 (AbCam #28364, 1:500), Claudin5 (Millipore #ABT45,1:800) and GAPDH (Sigma #G8795, 1:10,000) were incubated overnight at 4°C in 1% NFDm in PBS-T. Following washes, appropriate secondary antibodies (Li-Cor) were incubated for 1 h at room temperature in 1% NFDm in PBS-T. Membranes were scanned using Li-Cor Odyssey near-infrared imager and raw intensity for each band was measured using Li-Cor Odyssey image analysis software. Scanned pseudo-colored images were converted to black and white.

ELISA Analyses

Tumor necrosis factor alpha (TNF α , Raybiotech #ELM-TNF-001) and chemokine C-C motif ligand (CCL2, Raybiotech #ELM-MCP1-001C) concentrations were quantified using standard ELISA technique. HPC lysates were run in duplicate at a concentration of 75 μg per well and incubated overnight at 4°C . Following incubation, the manufacturer's (RayBiotech) suggested protocol was followed. Optical density values for each ELISA were measured on a plate reader and sample concentrations were calculated based upon the supplied standard curve. Values were converted from pg/mL to $\text{pg}/\mu\text{g}$ of total protein loaded.

qRT-PCR Analyses

Quantification of multiple gene transcripts was conducted as previously described [10]. The following primers were used (5' to 3' S/AS); *Hif1 α* : GATGACGGCGACATGGTTTAC/CTCACTGGGCCATTTCTGTGT, *COX-2*: GCTGTACAAGCAGTGGCAA/GCTCGGCTTCCAGTATTGAG, *CD68*: GACCTACATCAGAGCCCCG/CGCCATGAATGTCCACTG, *CD11b*: CTGAGACTGGAGGCAACCAT/GATATCTCCTTCGCGCAGAC, *GFAP*: ATTGCTGGAGGGCGAAGAA/CGGATCTGGAGGTTGGAGAA, *VEGF α* : AC-CATGAACCTTTCTGCTCTCTTG/GAACTTGATCACTT-CATGGGACT, *VEGF β* : TGCCTACCTCACCTGTTTCC/CTCTTTTCGCTTACTGTTCTGGAG, *ICAM-1*: AAACCA-GACCCTGGAAGTGCAC/GCCTGGCATTTCAGAGTCTGCT.

Amplifications were carried out in duplicate and the relative expression of target genes was determined by the $2^{-\Delta\Delta\text{Ct}}$ method and normalized against cyclophilin gene expression. In each PCR analysis, template and RT controls were included to account for reagent contamination.

Flow Cytometry

WT and $CCR2^{RFP/+}CX3CR1^{GFP/+}$ mice were lethally overdosed with ketamine (150 mg/kg)/xylazine (15 mg/kg) mixture and transcardially perfused with ice-cold Hank's balanced salt solution without calcium and magnesium (HBSS). Following perfusion, mice were decapitated and brain hemispheres were separated to either ice-cold RPMI-1640 medium (without phenol; RPMI) or 4% paraformaldehyde (PFA) in buffered saline. Brain hemispheres

in RMPI were used for microglia/macrophage isolation following standard procedures [39], while 4% PFA post-fixed tissues were used for sectioning and imaging (see below). Fc receptor blocking was performed before all staining procedures using an anti-CD16/32 antibody (BD Pharmigen #553142). The following reagents were used for labeling isolated microglia/macrophage: 7AAD (Sigma-Aldrich #A9400), CD11b Alexafluor 700 (BD Pharmigen #557960), F4/80 APC (Invitrogen #MF48005). Mandibular blood draws from naïve $CCR2^{RFP/RFP}CX3CR1^{GFP/GFP}$ mice were used as positive controls for RFP and GFP expression. Additionally, naïve WT isolated microglia/macrophages served as negative control for RFP and GFP expression. Spectral compensation was achieved using polystyrene microparticles (BD Pharmigen #552845) in combination with each of the above listed conjugated antibodies following manufacturer's suggested protocol. Standard staining procedures were conducted as previously described [39] before analysis on FACSaria III cell sorter (BD Biosciences). All samples were diluted 1:10 and run in duplicate.

Brain Tissue Sectioning and Imaging

All brain tissue used for fluorescence imaging was sectioned as previously described [38]. 40 μ m free-floating sections were mounted onto Superfrost Plus slides (Fisher #12-550-15) and allowed to dry overnight. Slides were rinsed in buffered saline solution before counterstaining with 4',6-diamidino-2-phenylindole (DAPI; Invitrogen #D1306) followed by coverslipping in Vectashield fluorescent mounting medium (Vector #H1000). All imaging was achieved using a Zeiss Imager.Z1 Apotome microscope controlled by ZEN software (Zeiss 2012).

Data Analysis

All data were analyzed using Prism software (v6.0, GraphPad; La Jolla, CA) and are presented as the mean \pm standard error of the mean (SEM). Statistical analyses were performed using ANOVA or Student's t-test. Pairwise comparisons within ANOVA were assessed by Tukey's HSD *post hoc* multiple comparisons test. Throughout, p values of <0.05 were considered significant.

Results

Cranial Irradiation Induces a Protracted Decrease in CD11b⁺ Myeloid Cells in the Brain

We characterized the response of myeloid cells at 7, 14, and 28 days following ionizing radiation. All mice tolerated cranial radiation (10 Gy) dosage and gained weight normally over the duration of the studies (data not shown) as we have previously reported [5,10]. A single 10 Gy dose of radiation was sufficient to decrease ($F_{(3,12)} = 12.07$, $p = 0.0006$) the proportion of CD11b⁺ myeloid cells at 7 ($p < 0.05$) and 14 ($p < 0.01$) days after radiation compared to sham, however this deficit returned to sham levels by day 28 (Fig. 1A). Interestingly, although there was a decrease in the overall population of myeloid cells, we observed a significant increase in the percentage of CD11b⁺ cells that were F4/80⁺, a marker of activated macrophages ($F_{(3,12)} = 4.048$, $p = 0.0335$), after radiation exposure. A pairwise comparison revealed significance only at the 7-day time point ($p < 0.05$) compared to sham (Fig. 1B,D). Commensurately, we observed a trend for downregulation of CD11b⁺ cells that were F4/80⁻ (Fig. 1C,D).

10 Gy Cranial Irradiation is Sufficient to Induce the Migration of F4/80⁺CCR2⁺ Peripheral Macrophages into the Brain

Recent evidence using a microglia “death signal” model, wherein all CNS microglia are systematically depleted, suggests that peripherally derived macrophages infiltrate into the CNS and replace resident microglia [40]. As defined by the expression of CCR2, our studies examined if peripherally derived macrophages infiltrate the CNS following cranial irradiation. Seven days after irradiation in $CCR2^{RFP/+}CX3CR1^{GFP/+}$ reporter mice, our data showed that there is a depletion of CD11b⁺GFP⁺ cells (Fig. 2A, $p < 0.05$); similar to what was observed in WT mice. There was no change in percentage of activated (F4/80⁺) CX3CR1⁺ cells in irradiated mice compared to sham (Fig. 2B). Additionally, while there were no differences in the proportion of infiltrated macrophages (F4/80⁺CCR2⁺) in response to cranial irradiation (Fig. 2C), there was a significant increase ($p < 0.05$) in the percentage of cells that expressed both CCR2 and CX3CR1 (Fig. 2D,E) seven days after cranial irradiation. Notably, these double-labeled cells are visible in the dorsal HPC by immunofluorescence (Fig. 2F).

Cranial Radiation Alters Microglia and Astrocyte Gene Expression in the Hippocampus

The hippocampus has been shown to be especially vulnerable to radiation-induced damage. Because of the observed changes in the myeloid cell population, we next examined HPC gene expression for markers of microglia and astrocyte reactivity. In accordance with our flow cytometry data in both WT and $CCR2^{RFP/+}CX3CR1^{GFP/+}$ mice, we observed a significant decrease in *CD11b* mRNA expression compared to sham (Fig. 3A, $p < 0.05$). However, there were no changes induced by radiation exposure to CD68, a lysosomal marker associated with phagocytic microglia/macrophages. We next examined CD45, which is a haematopoietic marker of monocytes/macrophages but found no difference initiated by irradiation, although there was a trend for a reduction. Astrocytes have been shown to contribute to innate immune response by releasing multiple pro-inflammatory cytokines and chemokines [41]. Relative gene expression for glial fibrillary acid protein (GFAP) was significantly induced in the HPC of irradiated mice compared to sham (Fig. 3B). However, when we examined vimentin and S100 β as other markers associated with astrocyte activation we found no differences induced by irradiation.

Cranial Irradiation Induces Pro-inflammatory Response in the Hippocampus of WT Mice

Given our data showing multiple alterations in both the cell types and markers associated with innate immune function, we next examined two pro-inflammatory factors classically associated with these responses. Specifically, we measured the concentrations of TNF α and CCL2 from the hippocampus of WT mice seven days after cranial irradiation. Induction of TNF α has pleiotropic effects in the CNS, most notably protracted expression of this pro-inflammatory cytokine has been shown to be neurotoxic in a variety of animals models of disease. Moreover, increased expression of the pro-inflammatory chemokine CCL2 has been shown to chemotactically recruit CCR2⁺ macrophages to sites of inflammation [13,42–45]. Herein, our data show that 10 Gy radiation exposure significantly upregulates the production of both TNF α ($p < 0.01$) and CCL2 ($p < 0.001$; Fig. 4). Interestingly, we did not observe any changes in mRNA gene expression of CCL7, CCL8, or CCL12 in the HPC of irradiated mice compared to sham (data not shown).

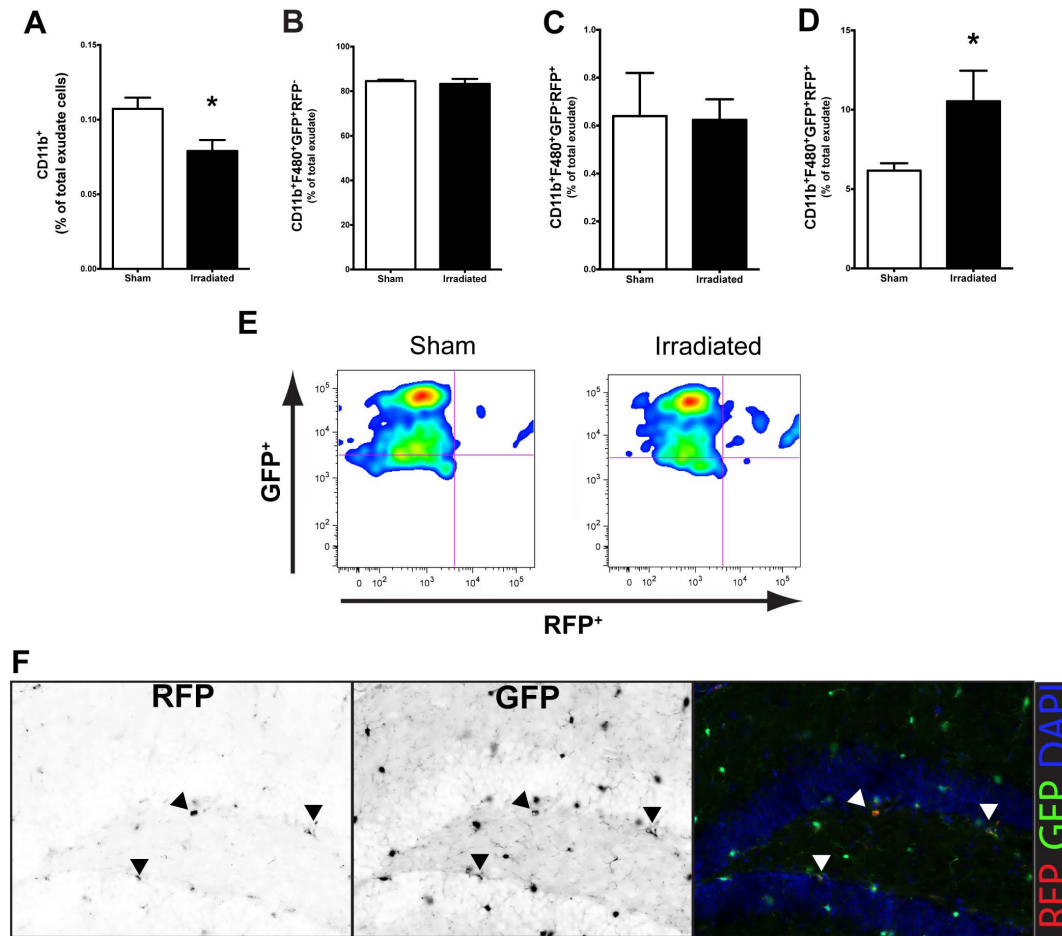


Figure 2. Cranial irradiation induces the infiltration of peripherally derived macrophages at seven days. **A.** The percentage of CD11b⁺GFP⁺ microglial cells was significantly decreased in *CCR2^{RFP/+}CX3CR1^{GFP/+}* irradiated mice compared to sham (Student's t-Test; * $p < 0.05$). **B.** Cranial irradiation does not affect the percentage of resident macrophages (CD11b⁺F4/80⁺CX3CR1⁺CCR2⁻, Student's t-Test; $p > 0.05$), **C.** nor the proportion of peripheral macrophages (CD11b⁺F4/80⁺CX3CR1⁻CCR2⁺, Student's t-Test; $p > 0.05$); **D.** but is associated with a significant increase in the percentage of infiltrated peripherally derived cells that had differentiated into microglia-like macrophages (CD11b⁺F4/80⁺CX3CR1⁺CCR2⁺, Student's t-Test; * $p < 0.05$). **E.** Representative plots showing the radiation-induced accumulation of peripherally derived macrophages into the brain parenchyma. **F.** Moreover, these cells can be seen in the dentate gyrus of the dorsal hippocampal formation following irradiation. RFP and GFP single pseudo-colored image is converted to black and white to discriminate location in the color co-localized panel. Black arrowheads point to individual positively labeled cells for their respective fluorochrome, while white arrowheads show the colocalized cells in the pseudo-colored image. doi:10.1371/journal.pone.0093650.g002

10 Gy Cranial Radiation does not Alter BBB Integrity but does Affect Multiple Signaling Cascades Associated with Endothelial Function in the HPC

In vitro and *in vivo* data suggest that high doses of ionizing radiation can disrupt the physiological properties of the blood-brain barrier especially in light of increased CCL2 expression [46–51]. However, the effect of cranial radiation *in vivo* is not well defined. This dosage and time point failed to reveal any vascular leaking of tail-vein delivered lectin-B4 into the HPC parenchymal compartment (Fig. 5A/B). We also analyzed multiple molecular markers associated with the maintenance of BBB tight junctions, junction adhesion molecule 1 (JAM1), zona occludens 1 (ZO-1), claudin5, and platelet endothelial cellular adhesion molecule 1 (PECAM), using Western blot technique. At this dosage and time point there were no significant differences induced by radiation among any targets (Fig. 5C). Next, we examined multiple signaling molecules associated with inflammation and altered vascular response. Specifically, there was a significant induction of cyclooxygenase 2 (COX2) mRNA in the hippocampus of

irradiated mice compared to sham (Fig. 5D, $p < 0.05$); a similar increase was found in the expression of hypoxia inducible factor 1 alpha (HIF1 α , $p < 0.01$). Importantly, these signaling molecules have been implicated in the regulation of vasculogenesis [52–56] by altering the expression of vascular endothelial growth factor (VEGF) and its cognate receptor (VEGFR2). Our results demonstrate a significant decrease in both VEGF ($p < 0.05$) and VEGFR2 ($p < 0.05$) mRNA in the hippocampus of irradiated mice compared to sham. Ionizing radiation and inflammation have been shown to alter the expression of endothelial-associated adhesion molecules (e.g. integrins and chemokines), which may influence the arrest, adhesion, and migration of circulating immune cells (e.g. macrophages) into tissue compartments [57–59]. Lastly, we examined the expression of multiple molecules associated with the recruitment of peripheral macrophages into CNS parenchyma [58]. Irradiation resulted in a significant increase ($p < 0.05$) in the expression of ICAM1 in the HPC compared to sham (Fig. 5E). However, no radiation-induced changes were observed for

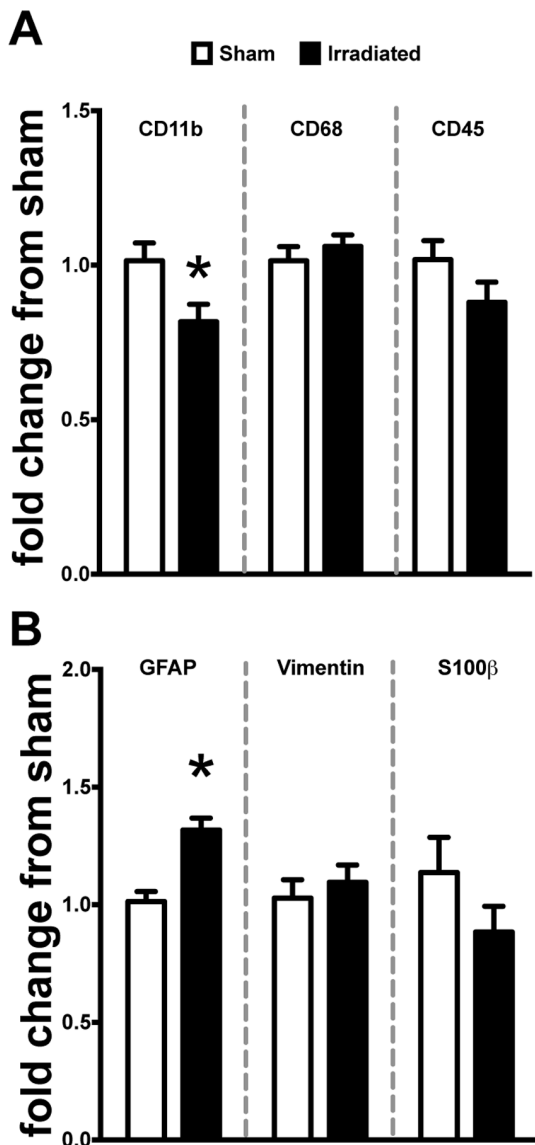


Figure 3. Cranial irradiation alters microglia and astrocyte molecular markers of activation in the hippocampus of WT mice. **A.** Irradiation induced a significant decrease of CD11b gene expression compared to sham (Student's t-Test; $*p < 0.05$) but no changes in the phagocytic or haematopoietic markers CD68 or CD45 (Student's t-Test; $p > 0.05$). **B.** GFAP expression was significantly increased compared to sham (Student's t-Test; $*p < 0.05$). Conversely, there were no changes in gene expression for alternate markers associated with astrocyte activation: vimentin and S100β (Student's t-Test; $p > 0.05$). doi:10.1371/journal.pone.0093650.g003

VCAM1 or CXCL12, which are both implicated in differential recruitment of peripheral monocytes [57,58,60].

Discussion

Recently, we demonstrated that CCR2-deficient mice have reduced levels of irradiation-induced inflammatory response in the hippocampus, and improved cognitive function as compared to wild type animals. These results suggest that CCR2 plays an important role in radiation-induced hippocampal neuronal dysfunction [10], either directly or through the modulation of

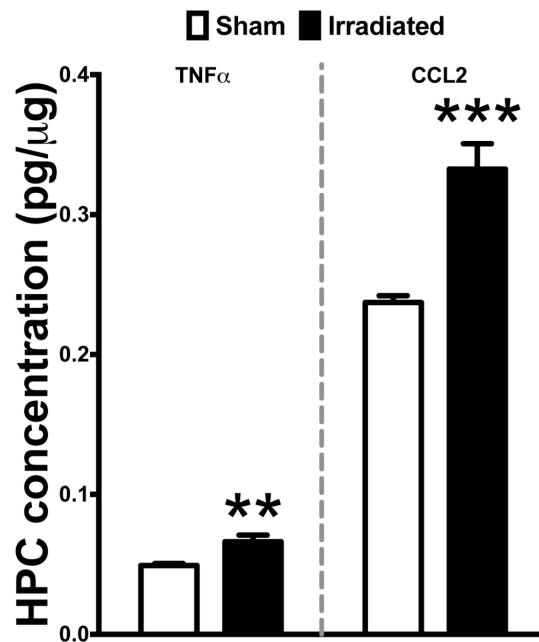


Figure 4. Cranial irradiation is associated with a significant increase of pro-inflammatory signaling molecules in the hippocampus. Standard ELISA analysis revealed a significant induction in TNFα (Student's t-Test; $**p < 0.01$) and CCL2 (Student's t-Test; $***p < 0.001$) levels in the HPC of WT irradiated mice compared to sham. doi:10.1371/journal.pone.0093650.g004

other pathways. Based on these results, we hypothesized that cranial irradiation may alter the brain's microenvironment sufficiently to permit the infiltration of peripherally derived, pro-inflammatory CCR2⁺ macrophages. To test this hypothesis we used both WT and CCR2^{RFP/+}CX3CR1^{GFP/+} reporter mice [16] to examine the effects of cranial irradiation on the brain's myeloid cell population; central and peripherally derived. Further, we examined the expression of multiple inflammation-related signaling molecules in the hippocampus to determine if these changes may mediate the infiltration of CCR2⁺ macrophages from systemic circulation following cranial radiation.

Overall, radiation exposure produced a persistent decrease in the percentage of CD11b⁺ microglia in WT mice, which returned to sham levels by 28 days after irradiation. Previous work in a rat model of lesioned spinal cord has shown that 7 days following 25 Gy exposure was sufficient to reduce the number of microglia in the lesioned, non-lesioned, and sham tissues exposed to radiation [61]. However, to the authors' best knowledge, these are the first data showing that cranial irradiation is also capable of altering the brain's resident microglia population within a relatively short time period. Although radiation induced an overall decrease in the proportion of resident microglia seven days following exposure, at this time point we observed a significant increase in the percentage expressing F4/80, a classic marker of macrophage activation [62]. Given these unexpected results at the seven-day time point, we extended these parameters to the CCR2^{RFP/+}CX3CR1^{GFP/+} mice to be able to fully delineate the effect of cranial irradiation upon both resident (GFP⁺) versus infiltrating (RFP⁺) microglia/macrophages. Corroborating the effects we observed in WT mice, we again found a significant decrease in the percentage of CD11b⁺GFP⁺ resident microglia in the irradiated mice at the seven-day time point.

By using CCR2^{RFP/+}CX3CR1^{GFP/+} mice, it is possible to distinguish resident microglia/macrophages from peripherally

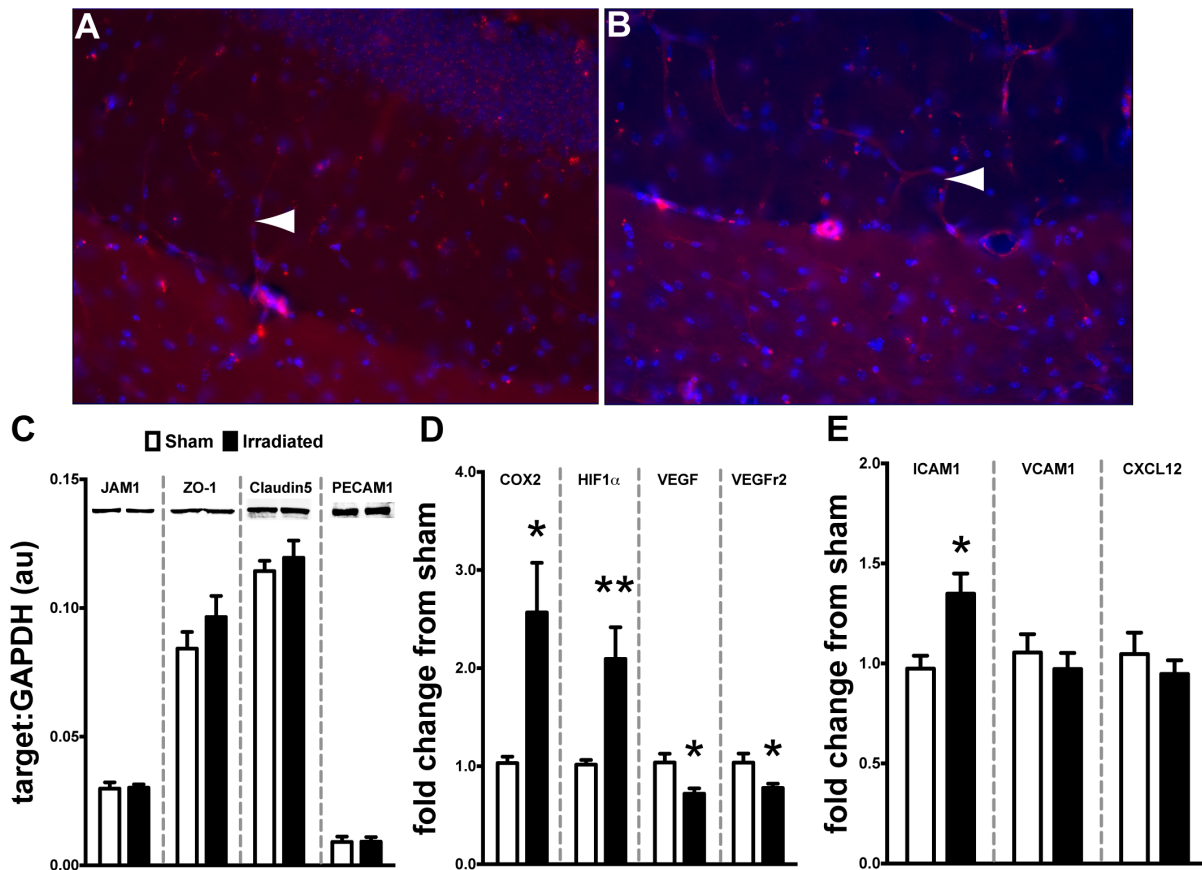


Figure 5. Cranial irradiation does not affect BBB integrity but does alter vascular signaling molecules. Tail-vein injected rhodamine-lectin remained within the vascular compartment without leaking into HPC parenchymal space in either the sham (A) or irradiated (B) treated mice seven days after irradiation. White arrowhead indicate positively stained rhodamine-lectin labeled microvasculature in the dorsal HPC. C. Complementing the lectin experiment, Western blot analysis revealed that 10 Gy of cranial irradiation was not sufficient to alter the expression of JAM1, ZO-1, Claudin5, or PECAM1, which are multiple proteins associated with BBB function (Student's t-Test; $p > 0.05$). D. There was a significant induction of signaling intermediates associated with vascular function: COX2 (Student's t-Test; $*p < 0.05$) and HIF1 α (Student's t-Test; $**p < 0.01$) gene expression in the HPC of irradiated WT mice. Conversely, we observed a significant down regulation in gene expression of VEGF (Student's t-Test; $*p < 0.05$) and its cognate receptor VEGFr2 (Student's t-Test; $*p < 0.05$). E. Irradiation induced the expression of monocyte associated cellular adhesion molecule ICAM1 in the HPC (Student's t-Test; $*p < 0.05$) but not VCAM1 or CXCL12 (Student's t-Test; $p > 0.05$). doi:10.1371/journal.pone.0093650.g005

derived monocytes/macrophages [16]. Seven days following irradiation we found a significant increase in the proportion of macrophages (CD11b⁺F4/80⁺) that co-express GFP and RFP (CX3CR1⁺CCR2⁺). These findings suggest that cranial radiation is sufficient to induce the migration of peripherally derived macrophages into the brain parenchyma. Moreover, the expression of both CX3CR1 and CCR2 on the same cell suggest that these cells, originally of a peripheral origin (CX3CR1⁻CCR2⁺), start to share some feature of microglia, as resident microglia do not natively express CCR2 in naive or diseased conditions. A caveat to our findings is that at this time point we were unable to find a significant change due to irradiation in the newly immigrated peripheral macrophages (CX3CR1⁻CCR2⁺). These findings may suggest that there may be an acute response to radiation exposure that induces peripheral macrophage immigration into the CNS prior to the seven-day time point we examined. Our findings are also corroborated by prior work in bone marrow chimeric mice, showing engraftment of donor-derived monocytes in the spinal cord following whole body irradiation [14]. Furthermore, it is possible that the radiation-induced migration and differentiation of peripheral macrophages represents an attempt to replace depleted resident microglia. Recent work has

shown that selective depletion of resident microglia without blood brain barrier disruption creates a permissive environment for the recruitment, infiltration, and engraftment of peripheral macrophages [40].

Hippocampal function is especially sensitive to the effects of radiation exposure, ultimately resulting in a negative impact on learning and memory [2–4]. Given the cellular changes observed with flow cytometry analysis, we next examined the hippocampus of WT mice for multiple signaling molecules that have been consistently implicated in the migration of peripheral macrophages into damaged tissue. Confirming the changes we observed with decreased proportions of CD11b⁺ microglia/macrophages in flow cytometry, we found a significant decrease in gene expression levels of CD11b in the hippocampus of irradiated mice seven days after irradiation. Interestingly, there were no changes in other phenotypic markers of microglia/macrophage activation (CD68 and CD45). Recent work has shown substantial heterogeneity among macrophage populations and that F4/80 expression is present on the majority of tissue macrophages while other markers (e.g. CD68 and CD45) may represent only a minor fraction of the total population [63].

Astrocyte activation has been consistently shown to play a role in the innate immune response associated with various models of neurodegenerative disease [41,59,64–66]. Our study revealed a significant increase in GFAP gene expression in the hippocampus of irradiated mice, but not in vimentin or S100 β as other markers of astrogliosis. Interestingly, we did observe a trend for decreased expression of S100 β in irradiated mice. This decline may be due to the expression of S100 β on oligodendrocytes and their precursors [67], which undergo apoptosis following irradiation [68].

Brain irradiation can induce the local expression of multiple cytokines in the rodent brain [7]. In accordance with previous findings, the present results show a significant induction of the pro-inflammatory cytokine TNF α and chemokine CCL2 in the hippocampus of irradiated mice. TNF α expression has pleiotropic effects in the CNS, notably it has been shown to concomitantly induce the expression of CCL2 in astrocytes [34,69–71]. Moreover, increased expression of CCL2 has consistently been shown to alter the integrity of the blood brain barrier [48,50,51,72]. In the present study, we did not observe any radiation-induced effects on the expression of multiple proteins associated with endothelial tight junction integrity in the hippocampus. However, others have demonstrated vasculature vulnerability and rarefaction following irradiation [73–75] and these changes may be sufficient to induce multiple factors associated with the recruitment of systemic macrophages into damaged tissues [57,59,76,77]. Specifically, we observed a significant increase in ICAM1 hippocampal gene expression. However, other markers associated with endothelial mediated macrophage recruitment were not altered at this time point. These findings are in agreement with the lack of change in the percentage of peripheral macrophages (CX3CR1⁺CCR2⁺) at this time point and may further suggest that the elevated levels of ICAM1 are a residual response.

Next, we examined upstream signaling mediators of the altered inflammatory and endothelial response. In the hippocampus of irradiated WT mice, there was a significant increase in the expression of two early response genes COX-2 and HIF1 α . Prostaglandins, a COX-2 dependent by-product, have been shown to induce the expression of HIF1 α in normoxic conditions, perpetuating inflammatory response [78]. Moreover, these two

mediators have been shown to alter the expression of VEGF, a potent angiogenic factor for endothelial cells [53,79]. Herein, we showed that both VEGF and its cognate receptor (VEGFR2) gene expression are significantly downregulated in the irradiated hippocampus. These findings are in agreement and extend previous work in a rat model of cranial irradiation that showed similar reductions in multiple early time points [54]. Taken together, the increased expression of pro-inflammatory early response genes COX-2 and HIF1 α alongside the concomitant increase in TNF α and CCL2 may create a feed-forward pro-inflammatory loop ultimately resulting in hippocampal microvasculature rarefaction following radiation exposure. Consequently, this in turn could explain the increase cellular adhesion molecules driving the increased migration of peripherally derived macrophages to the brain parenchyma.

In conclusion, the present study demonstrates that of the brain's innate immune response is particularly vulnerable to cranial irradiation. Alterations of the brain's local microenvironment may be responsible for the recruitment and immigration of peripherally derived macrophages in an effort to replace apoptotic or dysfunctional resident microglia. Moreover, the infiltration of peripheral macrophages seems to be due to chemotactic signaling and not dependent on the disruption of the BBB. It remains unclear if peripherally derived macrophages can functionally substitute for resident microglia. Cumulatively, radiation-induced alterations in the production of cytokines, chemokines, and growth factors may contribute to altered endothelial function and upregulation of adhesion molecules implicated in the recruitment of peripheral macrophages from systemic circulation. All together, these data provides novel insight into a potential molecular mechanism that may contribute to radiation brain-injury. Further work is still needed to define the role of these infiltrating macrophages in response to radiotherapy.

Author Contributions

Conceived and designed the experiments: JM NG SR. Performed the experiments: JM TJ SL. Analyzed the data: JM NG SR. Contributed reagents/materials/analysis tools: SR NG. Wrote the paper: JM NG SR.

References

- Abayomi OK (1996) Pathogenesis of irradiation-induced cognitive dysfunction. *Acta Oncol* 35: 659–663.
- Rola R, Raber J, Rizk A, Otsuka S, VandenBerg SR, et al. (2004) Radiation-induced impairment of hippocampal neurogenesis is associated with cognitive deficits in young mice. *Experimental neurology* 188: 316–330.
- Mizumatsu S, Monje ML, Morhardt DR, Rola R, Palmer TD, et al. (2003) Extreme Sensitivity of Adult Neurogenesis to Low Doses of X-Irradiation. *Cancer research* 63: 4021.
- Monje ML, Mizumatsu S, Fike JR, Palmer TD (2002) Irradiation induces neural precursor-cell dysfunction. *Nat Med* 8: 955–962.
- Rosi S, Andres-Mach M, Fishman KM, Levy W, Ferguson RA, et al. (2008) Cranial irradiation alters the behaviorally induced immediate-early gene arc (activity-regulated cytoskeleton-associated protein). *Cancer Res* 68: 9763–9770.
- Moravan MJ, Olschowka JA, Williams JP, O'Banion MK (2011) Cranial irradiation leads to acute and persistent neuroinflammation with delayed increases in T-cell infiltration and CD11c expression in C57BL/6 mouse brain. *Radiation research* 176: 459–473.
- Linard C, Marquette C, Mathieu J, Pennequin A, Clarençon D, et al. (2004) Acute induction of inflammatory cytokine expression after gamma-irradiation in the rat: effect of an NF-kappaB inhibitor. *Int J Radiat Oncol Biol Phys* 58: 427–434.
- Rosi S, Ferguson R, Fishman K, Allen A, Raber J, et al. (2012) The polyamine inhibitor alpha-difluoromethylornithine modulates hippocampus-dependent function after single and combined injuries. *PLoS One* 7: e31094.
- Monje ML, Toda H, Palmer TD (2003) Inflammatory blockade restores adult hippocampal neurogenesis. *Science* 302: 1760–1765.
- Belarbi K, Jopson T, Arellano C, Fike JR, Rosi S (2013) CCR2 deficiency prevents neuronal dysfunction and cognitive impairments induced by cranial irradiation. *Cancer Res* 73: 1201–1210.
- Banisadr G, Gosselin RD, Mechighel P, Rostene W, Kitabgi P, et al. (2005) Constitutive neuronal expression of CCR2 chemokine receptor and its colocalization with neurotransmitters in normal rat brain: functional effect of MCP-1/CCL2 on calcium mobilization in primary cultured neurons. *J Comp Neurol* 492: 178–192.
- Stamatovic SM, Shaku P, Keep RF, Moore BB, Kunkel SL, et al. (2005) Monocyte chemoattractant protein-1 regulation of blood-brain barrier permeability. *J Cereb Blood Flow Metab* 25: 593–606.
- Semple BD, Bye N, Rancan M, Ziebell JM, Morganti-Kossmann MC (2010) Role of CCL2 (MCP-1) in traumatic brain injury (TBI): evidence from severe TBI patients and CCL2^{-/-} mice. *J Cereb Blood Flow Metab* 30: 769–782.
- Mildner A, Schmidt H, Nitsche M, Merkle D, Hanisch UK, et al. (2007) Microglia in the adult brain arise from Ly-6ChiCCR2+ monocytes only under defined host conditions. *Nat Neurosci* 10: 1544–1553.
- Varol C, Yona S, Jung S (2009) Origins and tissue-context-dependent fates of blood monocytes. *Immunology and cell biology* 87: 30–38.
- Saederup N, Cardona AE, Croft K, Mizutani M, Cotleur AC, et al. (2010) Selective Chemokine Receptor Usage by Central Nervous System Myeloid Cells in CCR2-Red Fluorescent Protein Knock-In Mice. *PLoS one* 5: e13693.
- Mizutani M, Pino PA, Saederup N, Charo IF, Ransohoff RM, et al. (2012) The fractalkine receptor but not CCR2 is present on microglia from embryonic development throughout adulthood. *J Immunol* 188: 29–36.
- Auffray C, Fogg D, Garfa M, Elain G, Join-Lambert O, et al. (2007) Monitoring of blood vessels and tissues by a population of monocytes with patrolling behavior. *Science* 317: 666–670.

19. Geissmann F, Jung S, Littman DR (2003) Blood monocytes consist of two principal subsets with distinct migratory properties. *Immunity* 19: 71–82.
20. Swirski FK, Libby P, Aikawa E, Alcaide P, Luscinskas FW, et al. (2007) Ly-6Chi monocytes dominate hypercholesterolemia-associated monocytosis and give rise to macrophages in atheromata. *The Journal of clinical investigation* 117: 195–205.
21. Prinz M, Priller J (2010) Tickets to the brain: role of CCR2 and CX3CR1 in myeloid cell entry in the CNS. *J Neuroimmunol* 224: 80–84.
22. Getts DR, Terry RL, Getts MT, Muller M, Rana S, et al. (2008) Ly6c+ “inflammatory monocytes” are microglial precursors recruited in a pathogenic manner in West Nile virus encephalitis. *J Exp Med* 205: 2319–2337.
23. Serbina NV, Pamer EG (2006) Monocyte emigration from bone marrow during bacterial infection requires signals mediated by chemokine receptor CCR2. *Nat Immunol* 7: 311–317.
24. Auffray C, Sieweke MH, Geissmann F (2009) Blood monocytes: development, heterogeneity, and relationship with dendritic cells. *Annu Rev Immunol* 27: 669–692.
25. Gordon S, Taylor PR (2005) Monocyte and macrophage heterogeneity. *Nat Rev Immunol* 5: 953–964.
26. Naert G, Rivest S (2012) Age-related changes in synaptic markers and monocyte subsets link the cognitive decline of APP(Swe)/PS1 mice. *Front Cell Neurosci* 6: 51.
27. Mildner A, Mack M, Schmidt H, Bruck W, Djukic M, et al. (2009) CCR2+Ly-6Chi monocytes are crucial for the effector phase of autoimmunity in the central nervous system. *Brain* 132: 2487–2500.
28. Westin K, Buchhave P, Nielsen H, Minthon L, Janciauskiene S, et al. (2012) CCL2 is associated with a faster rate of cognitive decline during early stages of Alzheimer's disease. *PLoS One* 7: e30525.
29. Naert G, Rivest S (2011) CC chemokine receptor 2 deficiency aggravates cognitive impairments and amyloid pathology in a transgenic mouse model of Alzheimer's disease. *J Neurosci* 31: 6208–6220.
30. Naert G, Rivest S (2012) Hematopoietic CC-chemokine receptor 2 (CCR2) competent cells are protective for the cognitive impairments and amyloid pathology in a transgenic mouse model of Alzheimer's disease. *Mol Med* 18: 297–313.
31. El Khoury J, Toft M, Hickman SE, Means TK, Terada K, et al. (2007) Ccr2 deficiency impairs microglial accumulation and accelerates progression of Alzheimer-like disease. *Nat Med* 13: 432–438.
32. Mildner A, Schlevogt B, Kierdorf K, Bottcher C, Erny D, et al. (2011) Distinct and non-redundant roles of microglia and myeloid subsets in mouse models of Alzheimer's disease. *J Neurosci* 31: 11159–11171.
33. Schilling M, Strecker J-K, Ringelstein EB, Schäbitz W-R, Kiefer R (2009) The role of CC chemokine receptor 2 on microglia activation and blood-borne cell recruitment after transient focal cerebral ischemia in mice. *Brain research* 1289: 79–84.
34. Zuurman MW, Heeroma J, Brouwer N, Boddeke HWGM, Biber K (2003) LPS-induced expression of a novel chemokine receptor (L-CCR) in mouse glial cells in vitro and in vivo. *Glia* 41: 327–336.
35. Olah M, Amor S, Brouwer N, Vinet J, Eggen B, et al. (2012) Identification of a microglia phenotype supportive of remyelination. *Glia* 60: 306–321.
36. Prinz M, Mildner A (2011) Microglia in the CNS: immigrants from another world. *Glia* 59: 177–187.
37. Kim SH, Lim DJ, Chung YG, Cho TH, Lim SJ, et al. (2002) Expression of TNF-alpha and TGF-beta 1 in the rat brain after a single high-dose irradiation. *J Korean Med Sci* 17: 242–248.
38. Morganti JM, Nash KR, Grimmig BA, Ranjit S, Small B, et al. (2012) The soluble isoform of CX3CL1 is necessary for neuroprotection in a mouse model of Parkinson's disease. *J Neurosci* 32: 14592–14601.
39. Cardona AE, Huang D, Sasse ME, Ransohoff RM (2006) Isolation of murine microglial cells for RNA analysis or flow cytometry. *Nat Protoc* 1: 1947–1951.
40. Varvel NH, Grathwohl SA, Baumann F, Liebig C, Bosch A, et al. (2012) Microglial repopulation model reveals a robust homeostatic process for replacing CNS myeloid cells. *Proc Natl Acad Sci U S A* 109: 18150–18155.
41. Ransohoff RM, Brown MA (2012) Innate immunity in the central nervous system. *J Clin Invest* 122: 1164–1171.
42. Andres RH, Choi R, Pendharkar AV, Gaeta X, Wang N, et al. (2011) The CCR2/CCL2 interaction mediates the transendothelial recruitment of intravascularly delivered neural stem cells to the ischemic brain. *Stroke* 42: 2923–2931.
43. Chen M, Zhao J, Luo C, Pandi SP, Penalva RG, et al. (2012) Para-inflammation-mediated retinal recruitment of bone marrow-derived myeloid cells following whole-body irradiation is CCL2 dependent. *Glia* 60: 833–842.
44. Szymdynger-Chodobska J, Strazielle N, Gandy JR, Keefe TH, Zink BJ, et al. (2012) Posttraumatic invasion of monocytes across the blood-cerebrospinal fluid barrier. *J Cereb Blood Flow Metab* 32: 93–104.
45. Semple BD, Kossmann T, Morganti-Kossmann MC (2010) Role of chemokines in CNS health and pathology: a focus on the CCL2/CCR2 and CXCL8/CXCR2 networks. *J Cereb Blood Flow Metab* 30: 459–473.
46. Nordal RA, Wong CS (2005) Molecular targets in radiation-induced blood-brain barrier disruption. *Int J Radiat Oncol Biol Phys* 62: 279–287.
47. Fauquette W, Amourette C, Dehouck MP, Diserbo M (2012) Radiation-induced blood-brain barrier damages: an in vitro study. *Brain Res* 1433: 114–126.
48. Dimitrijevic OB, Stamatovic SM, Keep RF, Andjelkovic AV (2006) Effects of the chemokine CCL2 on blood-brain barrier permeability during ischemia-reperfusion injury. *J Cereb Blood Flow Metab* 26: 797–810.
49. Stamatovic SM, Sladojevic N, Keep RF, Andjelkovic AV (2012) Relocalization of junctional adhesion molecule A during inflammatory stimulation of brain endothelial cells. *Mol Cell Biol* 32: 3414–3427.
50. Roberts TK, Eugenin EA, Lopez L, Romero IA, Weksler BB, et al. (2012) CCL2 disrupts the adherens junction: implications for neuroinflammation. *Lab Invest* 92: 1213–1233.
51. Schellenberg AE, Buist R, Del Bigio MR, Toft-Hansen H, Khoroshi R, et al. (2012) Blood-brain barrier disruption in CCL2 transgenic mice during pertussis toxin-induced brain inflammation. *Fluids and Barriers of the CNS* 9: 10.
52. Wu G, Luo J, Rana JS, Laham R, Sellke FW, et al. (2006) Involvement of COX-2 in VEGF-induced angiogenesis via P38 and JNK pathways in vascular endothelial cells. *Cardiovasc Res* 69: 512–519.
53. Ferrara N, Gerber HP, LeCouter J (2003) The biology of VEGF and its receptors. *Nat Med* 9: 669–676.
54. Lee WH, Cho HJ, Sonntag WE, Lee YW (2011) Radiation attenuates physiological angiogenesis by differential expression of VEGF, Ang-1, tie-2 and Ang-2 in rat brain. *Radiat Res* 176: 753–760.
55. Kioi M, Vogel H, Schultz G, Hoffman RM, Harsh GR, et al. (2010) Inhibition of vasculogenesis, but not angiogenesis, prevents the recurrence of glioblastoma after irradiation in mice. *The Journal of clinical investigation* 120: 694–705.
56. Lerman OZ, Greives MR, Singh SP, Thank VD, Chang CC, et al. (2010) Low-dose radiation augments vasculogenesis signaling through HIF-1-dependent and -independent SDF-1 induction. *Blood* 116: 3669–3676.
57. Shi C, Pamer EG (2011) Monocyte recruitment during infection and inflammation. *Nature reviews Immunology* 11: 762–774.
58. Takeshita Y, Ransohoff RM (2012) Inflammatory cell trafficking across the blood-brain barrier: chemokine regulation and in vitro models. *Immunol Rev* 248: 228–239.
59. Zlokovic BV (2008) The blood-brain barrier in health and chronic neurodegenerative disorders. *Neuron* 57: 178–201.
60. Man S, Tucky B, Coteur A, Drazba J, Takeshita Y, et al. (2012) CXCL12-Induced Monocyte-Endothelial Interactions Promote Lymphocyte Transmigration Across an In Vitro Blood-Brain Barrier. *Science Translational Medicine* 4: 119ra114–119ra114.
61. Gilmore S (2003) Radiation-induced modulation of the microglial population in the normal and injured mature spinal cord. *Experimental neurology* 182: 169–179.
62. Austyn JM, Gordon S (1981) F4/80, a monoclonal antibody directed specifically against the mouse macrophage. *Eur J Immunol* 11: 805–815.
63. Lloyd CM, Phillips ARJ, Cooper GJS, Dunbar PR (2008) Three-colour fluorescence immunohistochemistry reveals the diversity of cells staining for macrophage markers in murine spleen and liver. *Journal of immunological methods* 334: 70–81.
64. Farina C, Aloisi F, Meinel E (2007) Astrocytes are active players in cerebral innate immunity. *Trends Immunol* 28: 138–145.
65. Ridet JL, Malhotra SK, Privat A, Gage FH (1997) Reactive astrocytes: cellular and molecular cues to biological function. *Trends Neurosci* 20: 570–577.
66. Lee SC, Liu W, Dickson DW, Brosnan CF, Berman JW (1993) Cytokine production by human fetal microglia and astrocytes. Differential induction by lipopolysaccharide and IL-1 beta. *J Immunol* 150: 2659–2667.
67. Steiner J, Bernstein HG, Bogerts B, Gos T, Richter-Landsberg C, et al. (2008) S100B is expressed in, and released from, OLN-93 oligodendrocytes: Influence of serum and glucose deprivation. *Neuroscience* 154: 496–503.
68. Panagiotakos G, Alshamy G, Chan B, Abrams R, Greenberg E, et al. (2007) Long-Term Impact of Radiation on the Stem Cell and Oligodendrocyte Precursors in the Brain. *PLoS one* 2: e588.
69. Brambilla R, Bracchi-Ricard V, Hu WH, Frydel B, Bramwell A, et al. (2005) Inhibition of astroglial nuclear factor kappaB reduces inflammation and improves functional recovery after spinal cord injury. *J Exp Med* 202: 145–156.
70. Babcock AA, Kuziel WA, Rivest S, Owens T (2003) Chemokine expression by glial cells directs leukocytes to sites of axonal injury in the CNS. *J Neurosci* 23: 7922–7930.
71. Semple BD, Frugier T, Morganti-Kossmann MC (2010) CCL2 modulates cytokine production in cultured mouse astrocytes. *J Neuroinflammation* 7: 67.
72. Mahad D, Callahan MK, Williams KA, Ubogu EE, Kivisakk P, et al. (2006) Modulating CCR2 and CCL2 at the blood-brain barrier: relevance for multiple sclerosis pathogenesis. *Brain* 129: 212–223.
73. Ljubimova NV, Levitman MK, Plotnikova ED, Eidus LK (1991) Endothelial cell population dynamics in rat brain after local irradiation. *The British journal of radiology* 64: 934–940.
74. Nguyen V, Gaber MW, Sontag MR, Kiani MF (2000) Late effects of ionizing radiation on the microvascular networks in normal tissue. *Radiation research* 154: 531–536.
75. Roth NM, Sontag MR, Kiani MF (1999) Early effects of ionizing radiation on the microvascular networks in normal tissue. *Radiation research* 151: 270–277.
76. Wu K-L, Tu B, Li Y-Q, Wong CS (2010) Role of Intercellular Adhesion Molecule-1 in Radiation-Induced Brain Injury. *International Journal of Radiation Oncology*Biophysics*Physics* 76: 220–228.
77. Ransohoff RM, Cardona AE (2010) The myeloid cells of the central nervous system parenchyma. *Nature* 468: 253–262.

78. Stasinopoulos I, O'Brien DR, Bhujwala ZM (2009) Inflammation, but not hypoxia, mediated HIF-1alpha activation depends on COX-2. *Cancer biology & therapy* 8: 31–35.
79. Lund EL, H g A, Olsen MWB, Hansen LT, Engelholm SA, et al. (2004) Differential regulation of VEGF, HIF1a and angiopoietin-1, -2 and -4 by hypoxia and ionizing radiation in human glioblastoma. *International Journal of Cancer* 108: 833–838.