

Keywords: breast cancer; classification; prognostic index; molecular; clinical; outcome

Nottingham Prognostic Index Plus (NPI +): a modern clinical decision making tool in breast cancer

E A Rakha^{1,2}, D Soria^{3,4}, A R Green¹, C Lemetre⁵, D G Powe², C C Nolan³, J M Garibaldi^{3,4}, G Ball⁵ and I O Ellis^{*1,2}

¹Breast Cancer Pathology Research Group, Division of Cancer and Stem Cells, School of Medicine, University of Nottingham, Nottingham, UK; ²Cellular Pathology, The Breast Institute, Nottingham University Hospitals NHS Trust, Nottingham, UK; ³School of Computer Science, University of Nottingham, Nottingham, UK; ⁴Advanced Data Analysis Centre, University of Nottingham, Nottingham, UK and ⁵College of Arts and Science, School of Science and Technology, Nottingham Trent University, Nottingham, UK

Background: Current management of breast cancer (BC) relies on risk stratification based on well-defined clinicopathologic factors. Global gene expression profiling studies have demonstrated that BC comprises distinct molecular classes with clinical relevance. In this study, we hypothesised that molecular features of BC are a key driver of tumour behaviour and when coupled with a novel and bespoke application of established clinicopathologic prognostic variables can predict both clinical outcome and relevant therapeutic options more accurately than existing methods.

Methods: In the current study, a comprehensive panel of biomarkers with relevance to BC was applied to a large and well-characterised series of BC, using immunohistochemistry and different multivariate clustering techniques, to identify the key molecular classes. Subsequently, each class was further stratified using a set of well-defined prognostic clinicopathologic variables. These variables were combined in formulae to prognostically stratify different molecular classes, collectively known as the Nottingham Prognostic Index Plus (NPI +). The NPI + was then used to predict outcome in the different molecular classes.

Results: Seven core molecular classes were identified using a selective panel of 10 biomarkers. Incorporation of clinicopathologic variables in a second-stage analysis resulted in identification of distinct prognostic groups within each molecular class (NPI +). Outcome analysis showed that using the bespoke NPI formulae for each biological BC class provides improved patient outcome stratification superior to the traditional NPI.

Conclusion: This study provides proof-of-principle evidence for the use of NPI + in supporting improved individualised clinical decision making.

Breast cancer (BC), the most common cancer and the second leading cause of cancer death in women, represents a heterogeneous group of tumours with varied genotypic and phenotypic features, behaviour and response to therapy. This, in addition to numbers and complexity of available treatment options, has resulted in decision making difficulties regarding the most appropriate treatment choice. Clinical decision making in personalised BC management requires robust and accurate risk stratification based not only on outcome prediction but also on a biological basis (Clark, 1994). Methods have been developed to

assist in predicting patient outcome and to support clinical decision making in BC management. Examples of such methods include the Nottingham Prognostic Index (NPI) (Galea *et al*, 1992; Balslev *et al*, 1994; D'Eredita *et al*, 2001), St Gallen consensus criteria (Goldhirsch *et al*, 2009), the National Comprehensive Cancer Network (NCCN) guidelines (Carlson *et al*, 2006) and Adjuvant! Online (Ravdin *et al*, 2001).

The current NPI is based on a combination of histopathological examination of tumour size, lymph-node (LN) stage and tumour grading assembled in a prognostic index formula (Haybittle *et al*,

*Correspondence: Professor IO Ellis; E-mail: ian.ellis@nottingham.ac.uk

Received 4 November 2013; revised 6 February 2014; accepted 9 February 2014; published online 11 March 2014

© 2014 Cancer Research UK. All rights reserved 0007 – 0920/14



1982) and can be used as a risk stratifier in unselected cohorts of operable early-stage primary BC patients. Prognosis worsens as the NPI numerical value increases and by using cutoff points patients may be stratified into good, moderate and poor prognostic groups (Ellis *et al*, 1987; Blamey *et al*, 2007). The NPI has been confirmed after long-term follow-up (Galea *et al*, 1992), validated independently in large multicentre studies (Brown *et al*, 1993; Balslev *et al*, 1994) and revised to stratify patients into five prognostic groups (Blamey *et al*, 2007). However, the NPI cannot reveal the full clinical/survival outcome heterogeneity currently observed in BC and would benefit from greater sophistication to support more accurate personalised management of BC patients. It is now recognised that the biological characteristics of BC are important for clinical management and incorporation into the NPI could significantly improve the delivery of personalised medicine in BC patients.

Current data imply that BC is a heterogeneous group of diseases with complex and distinctive underlying molecular pathogenesis (Beckmann *et al*, 1997; Ellis *et al*, 1999; Lishman and Lakhani, 1999). Further support for this hypothesis is provided by gene expression profiling (GEP) that have identified distinct molecular tumour groups with direct clinical relevance (Perou *et al*, 1999; Sorlie *et al*, 2001; van de Vijver *et al*, 2002; van't Veer *et al*, 2003; Darb-Esfahani *et al*, 2009; Parker *et al*, 2009; Nielsen *et al*, 2010). While this provides further compelling evidence that tumour biology is a key variable required for decision making in personalised BC management, the heterogeneity within these groups and its incorporation with the currently validated variables and prognostic indices add complexity. There is also evidence that individual clinicopathologic prognostic factors behave differently in the different molecular subclasses; for instance tumour grade and size, which have a significant prognostic value in the luminal/oestrogen receptor (ER)-positive classes, show a limited prognostic power in HER2-positive (Foulkes *et al*, 2009, 2010) and basal-like tumours (Rakha *et al*, 2010).

Although available data support incorporation of GEP, particularly multigene assays, in specific clinical settings, the difficulty in the integration of the clinicopathologic variables with the molecular assays, the reproducibility and the cost limit the clinical utility of this technology. An alternative approach is to initially classify BC into distinct molecular classes using a panel of proteins with known relevance to BC utilising the robust commonplace technology, immunohistochemistry (IHC), applied to routine formalin-fixed paraffin-embedded tumour samples.

As previously reported (Abd El-Rehim *et al*, 2005; Soria *et al*, 2010; Green *et al*, 2013), seven core BC classes were identified by evaluation of the expression levels for a selective panel of 25 BC-related biomarkers determined using IHC and supervised classification approaches based on the naïve Bayes classification performance (Soria *et al*, 2010). To make this classification easily applicable in routine practice, the number of markers was further reduced and 10 markers were found to be the minimum number which is required to retain the classification. This formed the basis of the development of a fuzzy rule induction algorithm (using the methodology previously described in Rasmani *et al*, 2009) to classify the breast tumours into one of the seven classes (Abd El-Rehim *et al*, 2005; Soria *et al*, 2010; Green *et al*, 2013). The core molecular classes identified include three luminal classes tumour characterised by high luminal Ck7/8 and hormone receptor (HR) expression. Luminal A and Luminal B tumours show high expression of CK7/8, ER, HER3 and HER4 but are separated by lower levels of PgR expression in Luminal B. Luminal N tumours show differential expression of HER3 and HER4. The two basal classes of tumour, characterised by high basal expression, are separated by p53 protein expression levels: high p53 (Basal p53 altered) or low p53 (Basal p53 normal). The two HER2+ classes are characterised by HER2 overexpression and are either positive

or negative for the expression of ER. These distinct molecular classes of BC showed a significant association with patient outcome.

In this study, we examine the hypothesis that molecular features of BC are a key driver of tumour behaviour and that the influence of established prognostic will vary between classes. As a consequence, application of established clinicopathologic prognostic variables will require development of bespoke prognostic indices to improve prediction of both clinical outcome and relevant therapeutic options. To examine this hypothesis, a comprehensive panel of biomarkers with relevance to BC, described above, has been applied to a large and well-characterised series of BC, using IHC and different multivariate clustering techniques, to identify the key molecular classes, phase 1 of NPI+ classification. Subsequently, each class was further stratified using a set of well-defined prognostic clinicopathologic variables. These variables were combined in bespoke formulae to prognostically stratify different molecular classes, NPI+ classification phase 2. Thus, NPI+ is based on a two tier evaluation; the initial assessment determines the biological class of the tumour and is subsequently combined with a second-level analysis of traditional clinicopathologic prognostic variables resulting in tailored (bespoke) NPI-like formulae for each biological class.

PATIENTS AND METHODS

Patients. A series of 1073 patients from the Nottingham Tenovus Primary Breast Carcinoma Series, aged 70 years or less, presenting with primary operable (stages I, II and III) invasive BC between 1986 and 1998 were used. This is a well-characterised consecutive series of patients who were uniformly treated according to standard clinical protocols (Abd El-Rehim *et al*, 2005; Rakha *et al*, 2008). All tumours were <5 cm diameter on clinical/pre-operative measurement and/or on operative histology (pT1 and pT2). Women aged over 70 years were not included because of the increased confounding factor of death from other causes and because primary treatment protocols for these patients often differed from those for younger women. Adjuvant systemic therapies were offered according to the NPI (Galea *et al*, 1992) and HR status (Galea *et al*, 1992). The NPI was calculated using the following formula: NPI = histological grade (1–3) (Rakha *et al*, 2008) + LN stage (1–3; 1 = negative, 2 = 1–3 nodes positive, 3 = ≥4 nodes positive) + (tumour size/cm × 0.2). No systemic therapy was offered to patients in the good prognostic groups (NPI ≤3.4). Patients in the moderate I group (NPI 3.41–4.4) with HR-positive tumours were offered hormonal therapy. Patients in the moderate II (4.41–5.4) and poor (NPI >5.41) groups received hormone therapy for HR-positive tumours and cytotoxic therapy (classical cyclophosphamide, methotrexate and 5-fluorouracil (CMF)) for HR-negative tumours if the patient was fit enough to tolerate chemotherapy. Hormonal therapy was given to 420 patients (39.0%) and chemotherapy to 264 (24.5%). Data relating to survival were collated in a prospective manner for those patients presenting after 1989 only. Breast cancer-specific survival (BCSS) was defined as the interval between the operation and the death from BC, death being scored as an event, and patients who died from other causes or were still alive were censored at the time of last follow-up. This study was approved by the Nottingham Research Ethics Committee 2 under the title 'Development of a molecular genetic classification of breast cancer'.

Biomarker assay. Immunohistochemical reactivity for 10 proteins, with known relevance in BC including those used in routine clinical practice, was previously determined using standard immunocytochemical techniques on tumour samples prepared as tissue microarrays (TMAs). These markers were chosen from a comprehensive panel of 25 markers used in our previously study (Abd El-Rehim *et al*, 2005) as the minimum number of markers that can maintain class membership and identify the same

molecular classes (Green *et al*, 2013). The biomarkers used for classification were ER, progesterone receptor (PgR), cytokeratin (CK) 5/6, CK7/8, epidermal growth factor receptor (EGFR; HER1), c-erbB2 (HER2), c-erbB3 (HER3), c-erbB4 (HER4), p53 and Mucin 1. Levels of immunohistochemical reactivity were determined by microscopic analysis using the modified Histochemical score (H-score), giving a semiquantitative assessment of both the intensity of staining and the percentage of positive cells (values between 0 and 300) (McCarty *et al*, 1985; Goulding *et al*, 1995). For HER2, the American Society of Clinical Oncology/College of American Pathologists Guidelines Recommendations for HER2 Testing in Breast Cancer were used for assessment (Wolff *et al*, 2007). Equivocal (2+) cases were confirmed by CISH as previously described (Garcia-Caballero *et al*, 2010).

Identification of biological class. As previously reported (Soria *et al*, 2010), six core BC classes, with an additional unclassifiable class, were obtained using a consensus clustering approach between different clustering methods. Briefly, four-step methodology for elucidating core, stable classes of data from a complex, multidimensional data set was as follows: (1) A variety of clustering algorithms were run on the data set including Hierarchical, K-means, Partitioning around medoids, Adaptive resonance theory

and Fuzzy c-means. (2) Where appropriate, the most appropriate number of clusters was investigated by means of cluster validity indices. (3) Concordance between clusters, assessed both visually and statistically, was used to guide the formation of stable 'core' classes of data. (4) A variety of methods were utilised to characterise the elucidated core classes. Concordance among solutions was evaluated using the Cohen's kappa coefficient κ . For inspection of the patient characteristics in each class, the distribution of each variable in the class was compared with its distribution in the total sample, using boxplots. A conventional multilayer perceptron artificial neural network model was utilised such that individual H-scores derived from the TMA analysis of the clinical samples were set as inputs and the class was set as the output using Boolean notation. This allowed the identification of markers that drive membership of a given class and that discriminate the class from the others.

Three luminal subgroups (Luminal-A (no = 370), Luminal-N (no = 146) and Luminal-B (no = 123)), two basal classes (Basal p53 altered (no = 126) and Basal p53 normal (no = 87)) and a HER2-positive class (HER2+ (no = 145)) were highlighted. In a subsequent study (Green *et al*, 2013), the HER2+ class was divided into two subgroups (HER2+/ER+ (no = 60) and HER2+/ER- (no = 85)).

Table 1. Clinicopathological parameters of the seven breast cancer biological classes

Parameter	Biological class							Cramer's V (Friendly, 2000) (P-value)
	Luminal A (no = 370)	Luminal N (no = 146)	Luminal B (no = 123)	Basal p53 altered (no = 126)	Basal p53 normal (no = 87)	HER2+/ER+ (no = 60)	HER2+/ER- (no = 85)	
	No (%)	No (%)	No (%)	No (%)	No (%)	No (%)	No (%)	
Size								
< 15 mm	106 (28.6)	45 (30.8)	27 (22.0)	15 (11.9)	10 (11.5)	6 (10.0)	10 (11.8)	0.199 (<0.01)
≥ 15 mm	264 (71.4)	101 (69.2)	95 (77.2)	111 (88.1)	77 (88.5)	54 (90.0)	75 (88.2)	
Grade								
1	79 (21.4)	41 (28.1)	20 (16.3)	1 (0.8)	0 (0)	1 (1.7)	1 (1.2)	0.405 (<0.01)
2	160 (43.2)	80 (54.8)	48 (39.0)	4 (3.2)	8 (9.2)	13 (21.7)	10 (11.8)	
3	131 (35.4)	25 (17.1)	54 (43.9)	121 (96.0)	79 (90.8)	46 (76.6)	74 (87.0)	
LN stage								
1	227 (61.4)	100 (68.5)	69 (56.1)	82 (65.1)	56 (64.4)	29 (48.3)	38 (44.7)	0.116 (<0.01)
2	120 (32.4)	37 (25.3)	37 (30.1)	33 (26.2)	24 (27.6)	25 (41.7)	33 (38.8)	
3	22 (5.9)	9 (6.2)	15 (12.2)	11 (8.7)	7 (8.0)	6 (10.0)	14 (16.5)	
NPI								
Excellent	54 (14.6)	29 (19.9)	14 (11.4)	0 (0)	0 (0)	1 (1.7)	1 (1.2)	0.203 (<0.01)
Good	93 (25.1)	49 (33.6)	21 (17.1)	2 (1.6)	5 (5.7)	5 (8.3)	4 (4.7)	
Moderate 1	103 (27.8)	34 (23.3)	30 (24.4)	50 (39.7)	22 (25.3)	18 (30.0)	24 (28.2)	
Moderate 2	70 (18.9)	24 (16.4)	35 (28.5)	45 (35.7)	37 (42.5)	18 (30.0)	26 (30.6)	
Poor	39 (10.5)	8 (5.5)	15 (12.2)	20 (15.9)	21 (24.1)	13 (21.7)	19 (22.4)	
Very poor	8 (2.2)	2 (1.4)	5 (4.1)	7 (5.6)	1 (1.1)	4 (6.7)	9 (10.6)	
Chemotherapy								
No	319 (90.1)	128 (90.8)	111 (94.1)	59 (50)	42 (52.5)	45 (78.9)	47 (58)	0.201 (<0.01)
Yes	35 (9.9)	13 (9.2)	7 (5.9)	59 (50)	38 (47.5)	12 (21.1)	34 (42)	
Hormone therapy								
No	185 (52.1)	90 (62.9)	44 (37.6)	105 (84.6)	60 (75)	24 (40)	66 (77.6)	0.362 (<0.01)
Yes	170 (47.9)	53 (37.1)	73 (62.4)	21 (15.4)	20 (25)	36 (60)	19 (22.4)	

Abbreviation: LN = lymph node (stage 1 = negative LN, stage 2 = 1–3 positive LN, stage 3 = ≥4 positive LN).

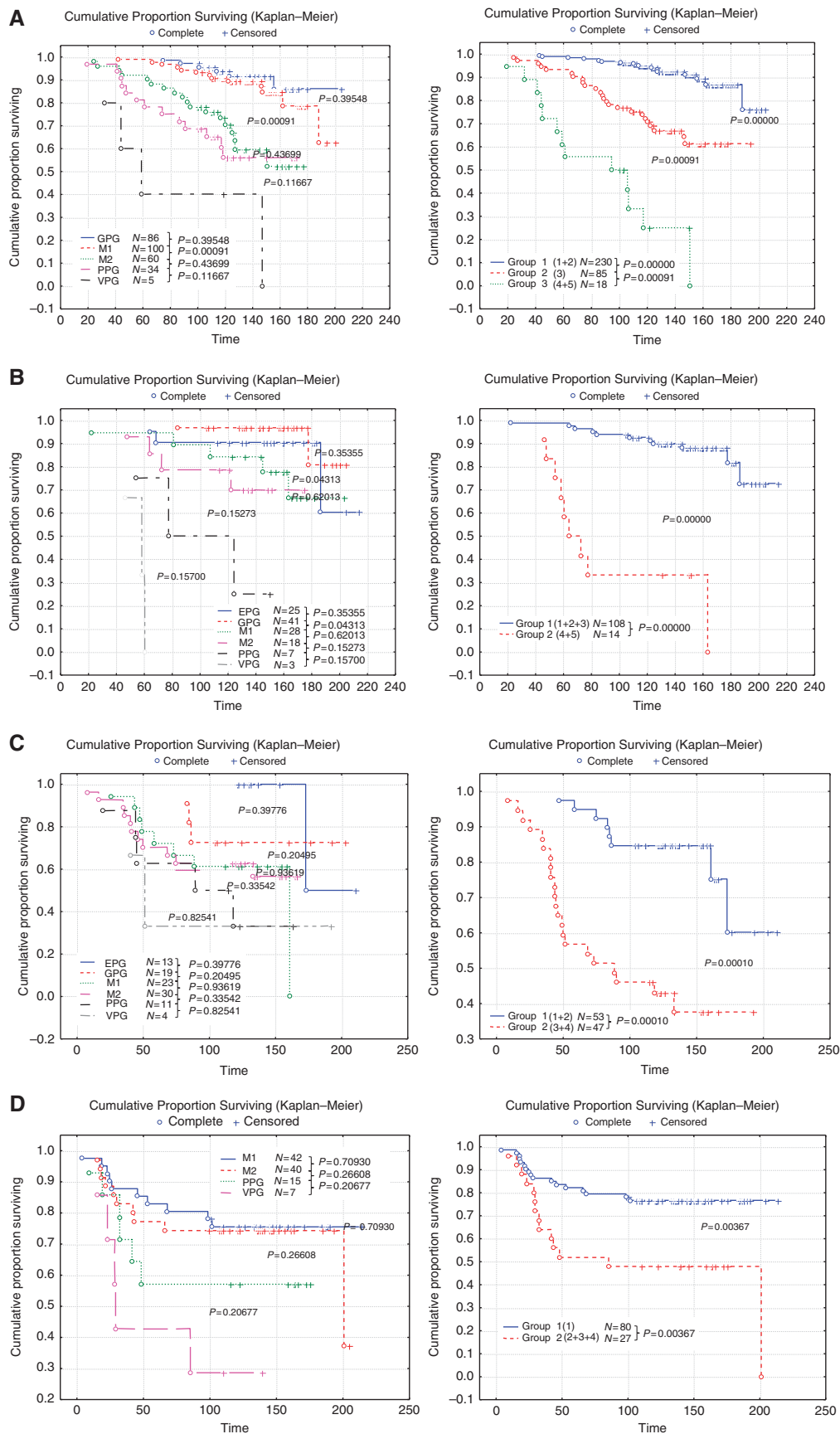


Figure 1. Patient stratification with the classic NPI (left) compared with NPI+ (right) in each of the biological classes. (A) Class 1 Luminal A, (B) class 2 Luminal N, (C) class 3 Luminal B, (D) class 4 Basal p53 altered (E) class 5 Basal p53 normal (F) class 6 HER2 +/ER+ and (G) class 7 HER2 +/ER-. Abbreviations: GPG = good prognostic group; M1 and M2 = moderate prognostic groups 1 and 2; PPG = poor prognostic group; VPPG = very poor prognostic group. Time is shown in months.

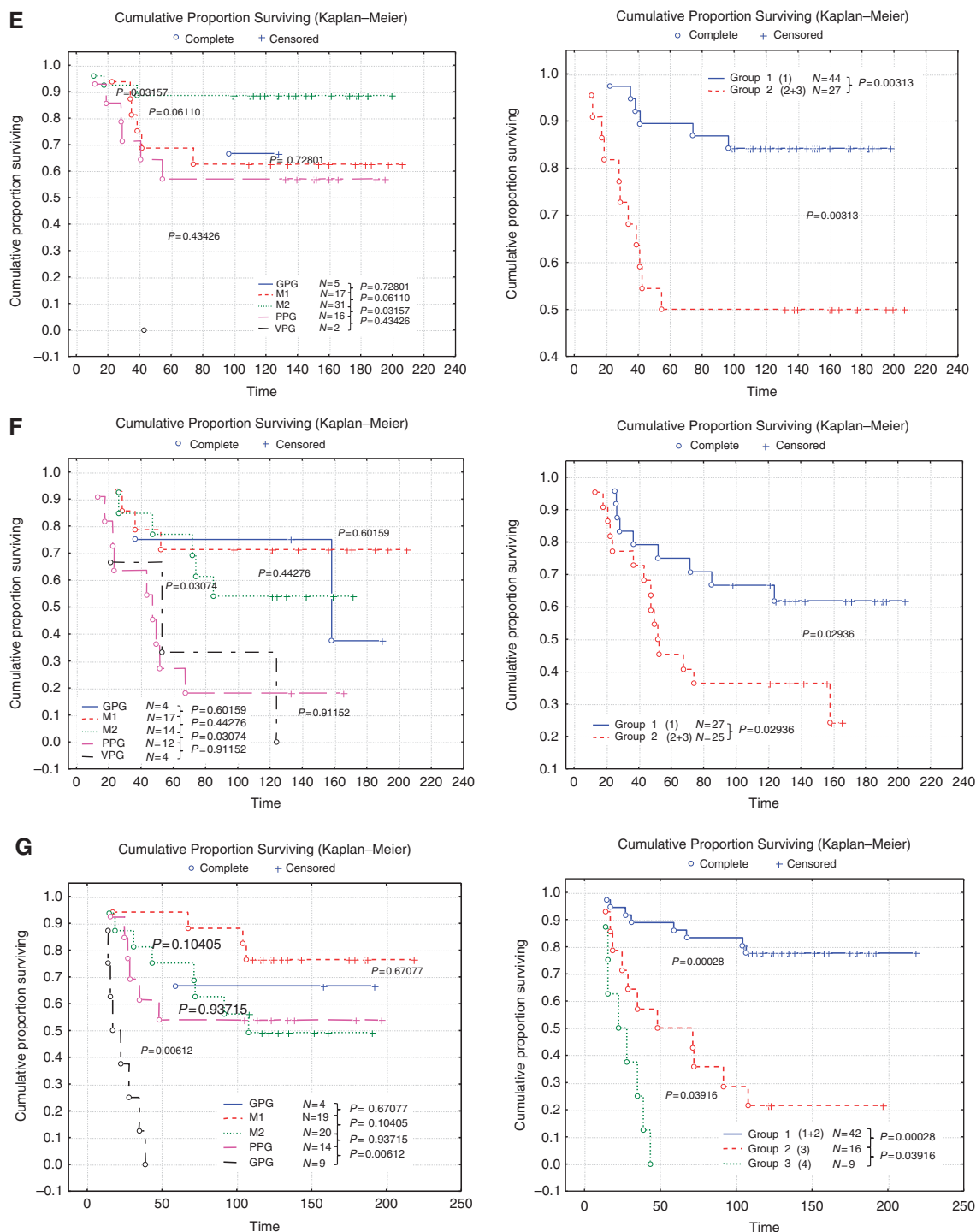


Figure 1. Continued

Development of NPI formulae for each biological class. A Cox regression analysis was performed for the overall population for a selection of available and well-established histopathologic prognostic factors. The variables tested were coded using a numerical categorical or continuous, depending on the variable, method. The variables included were number of positive nodes (N) (including nodal stage (St)), tumour size (Sz), tumour grade (including its components namely tubule formation, nuclear pleomorphism and mitotic index (M); Rakha *et al.*, 2008), lymphovascular invasion (LVI), ER status, PgR status and HER2 status. The NPI formulae were used to determine the prognostic effect in each biological class. The NPI+ score is

determined by utilisation of the β values generated by the COX regression. These β values indicate the magnitude of the influence of the hazard.

Survival analysis. After identification of the relevant parameters and their influence upon the prognostic model and within the context of each class, the individuals of the populations were assigned an NPI+ value to stratify them into different subgroups of prognostic relevance. In this preliminary work, the groups were assigned according to the integer value of the NPI+ score. This helped to ultimately stratify the cohorts of patients of each biological class in a Kaplan-Meier curve.

RESULTS

Biological class. In this study, using a consensus clustering approach and a panel of routinely applicable immunohistochemical markers with relevance to BC, seven core molecular BC classes

were identified. These classes included 370 patients in class 1 (Luminal A); 146 class 2 (Luminal N); 123 class 3 (Luminal B); 126 class 4 (Basal p53 altered); 87 class 5 (Basal p53 normal); 60 class 6 (HER2 +/ER +) and 85 class 7 (HER2 +/ER -) (Table 1).

Table 2. The number of patients in NPI+ classes receiving adjuvant systemic therapy

	Endocrine therapy		Chemotherapy	
	Yes	No	Yes	No
Luminal A				
Group 1	88	139	13	213
Group 2	62	18	13	67
Group 3	10	5	5	10
Luminal N				
Group 1	35	71	7	98
Group 2	10	4	4	10
Luminal B				
Group 1	23	29	0	52
Group 2	40	4	6	39
Basal p53 altered				
Group 1	15	63	37	41
Group 2	4	21	21	5
Basal p53 normal				
Group 1	11	32	19	24
Group 2	6	19	15	10
HER2 +/ER +				
Group 1	17	10	4	23
Group 2	16	8	8	16
HER2 +/ER -				
Group 1	18	23	12	29
Group 2	4	11	9	6
Group 3	3	6	7	2

Abbreviations: ER = oestrogen receptor; NPI+ = Nottingham prognostic index plus.

Development of NPI formulae for each class. After successive removal of the least significant (that is, with *P*-values above 0.2) parameters during different steps, the final factors with the most significant results, according to their β value in the Cox regression analysis, were identified. The proportional hazard ratio Cox regression identified six clinicopathologic prognostic factors of importance within the population in predicting BCSS: N (nodal number), St (stage), Sz (size), M (mitosis), LVI and PgR. Once these factors were identified, the population was split into the biological classes, as determined above, and Cox regression analyses were performed independently for each class to obtain the most significant clinicopathologic prognostic factors and their β value in the context of the classes. Kaplan–Meier analysis showed that using formulae, based on N, Sz, St, M, LVI and PgR, for each biological BC class provides improved and highly significant patient outcome stratification compared with the traditional NPI (Figure 1A–G). These variables were combined to form formulae that vary among different classes leading to bespoke NPI-like formulae for each of the seven biological classes forming a new biomarker-based prognostic index (NPI+). This NPI+ was then used to predict outcome (BCSS) in the different molecular classes and the NPI+ outcome prediction was compared with that achieved by the traditional NPI in each of the biological classes (Figure 1A–G). In addition to improved outcome prediction using NPI+ compared with the traditional NPI in each class, NPI+ provided more clinically relevant stratification with splitting of each class into two or three groups compared with the six classes of NPI.

Prediction of adjuvant therapy benefit. Although the current study is not derived from a randomised clinical trial sample, the cases were stratified based on the adjuvant systemic therapy in an attempt to assess the potential value of using NPI+ to predict outcome in the different classes. The number of the patients receiving either endocrine therapy or chemotherapy in each of the NPI+ classes is summarised in Table 2. When the cohort was stratified according to systemic therapy, NPI+ was found to predict good vs adverse outcome for all of the biological classes in both hormone therapy-treated patients (Figure 2) and chemotherapy-treated patients (Figure 3) with the exception of chemotherapy benefit in class 5 (Basal p53 normal) in which few deaths were observed in the group as a whole (Figure 3C). This approach is superior to use of the traditional NPI (Figure 4), which provides

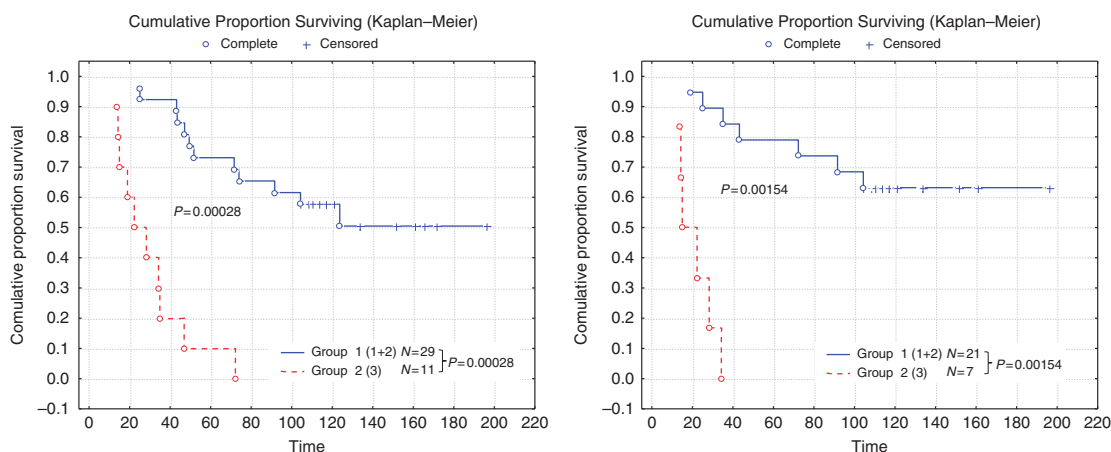


Figure 2. Stratification using NPI+ of those patients who received adjuvant chemotherapy in HER2-positive (regardless of ER expression; left) and HER2-positive ER-negative (right) classes. Time is shown in months.

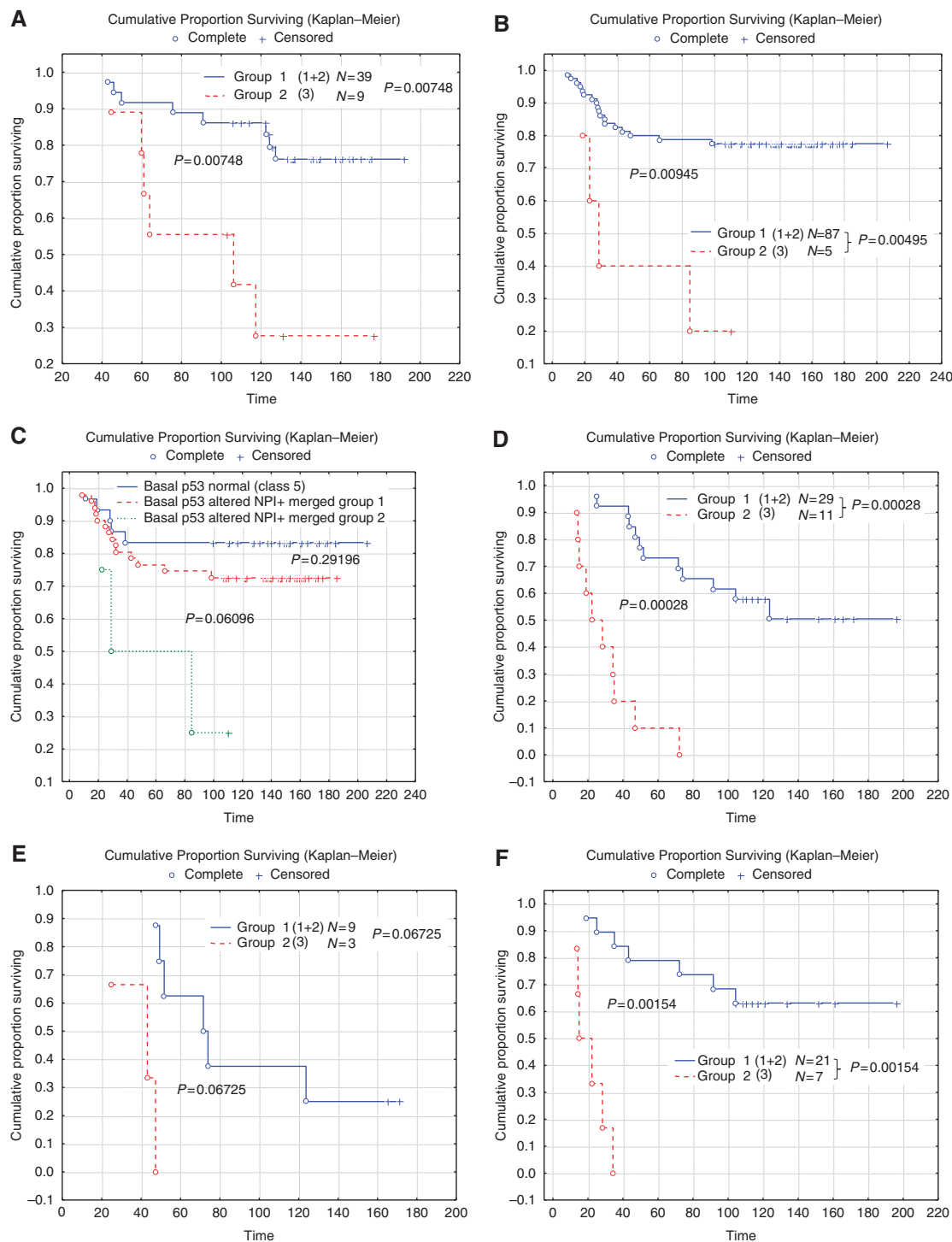


Figure 3. Stratification using NPI+ of those patients in the various classes who received adjuvant chemotherapy for groups (A) luminal (1 + 2 + 3), (B) basal (4 + 5), (C) two basal groups—patients with Basal p53 normal tumours had a good survival overall and no additional stratification could be achieved. (D) HER2 (6 + 7), (E) HER2 +/ER+ and (F) ER +/ER-. There were too few luminal cases receiving chemotherapy to allow development of NPI+ formulae for each of the luminal groups. It can be seen that NPI+ identifies patients with favourable vs poor outcome in all classes assessable apart from the Basal p53 normal class. Time is shown in months.

overall patient stratification but lacks similar ability to predict adverse outcome effectively in specific molecular classes.

DISCUSSION

Improved tailoring of treatment for BC requires integration of clinical pathologic and cancer biological information to ensure

all known variables that could potentially influence patient outcome and response to therapeutic treatments are considered. Subsequently, there has been increasing interest in the clinical utility of multigene assays, such as the Oncotype DX (Paik *et al*, 2004) and the MammaPrint test (van't Veer *et al*, 2002), and their integration into BC management strategies in certain clinical settings. Although the concept of molecular taxonomy of BC using global GEP has attracted attention of the scientific community,

their incorporation into routine clinical decision making did not prove successful for a number of reasons. These include cost, reproducibility, validation and lack of suitability to routine clinical settings.

Previously, we (Abd El-Rehim *et al*, 2005; Green *et al*, 2013) and others (Callagy *et al*, 2003; Ambrogi *et al*, 2006) have used IHC and TMA technology to develop a proposal for a modern molecular classification of human BC comparable to that produced by gene expression microarrays. By way of contrast, our methodology is expected to provide not only a simple and cost-effective approach but also a robust, feasible and reproducible method for BC risk stratification. In this study, we hypothesised that the combination of molecular taxonomy using a panel of IHC biomarkers with traditional prognostic clinicopathologic variables can produce a ‘state of the art’ approach of risk stratification in a reproducible and balanced way. This approach is driven by our improved understanding of BC biology and its impact on tumour behaviour and response to therapy, in addition to the expanding field of systemic and targeted therapy and subsequent difficulty in predicting outcome in these complex circumstances.

Initially, the combined protein expression profiles of 25 well-characterised biologically relevant biomarkers were assessed. These included proteins involved in different cellular functions and disease pathways including cell proliferation, adhesion, signal transduction and structural proteins. Using a consensus of clustering methodology and modelling techniques, we have developed a clinically based classification of BC based on 10 biomarkers (Green *et al*, 2013). This has confirmed seven classes, comparable to those identified with gene expression

analysis. These key biological phenotypes of BC can be identified using standard, widely available IHC technology and are associated with significantly different patient outcomes. Also of importance is the observation that 93% of BC cases clearly exhibit core class membership criteria, while only 7% remain unclassified. In addition, we believe that using this classification system provides a reflection of the complex molecular portrait of BC more than that could be obtained using the three marker panel (ER, PgR and HER2) assessed in routine practice. In the second phase, we used the existing clinicopathologic variables to stratify each biological class into clinically distinct subgroups using bespoke NPI-like formulae, known as the NPI+. The parameters used for the NPI+ for each of the seven core molecular class are not only different for each class but also incorporate additional well-validated variables such as LVI (Rakha *et al*, 2012) and PgR (Prat *et al*, 2013) that were not considered in the generation of the traditional NPI. The use of such formulae not only overcomes problems associated with the variable prognostic power of each individual clinicopathologic factors in the different molecular classes but also provides a way of incorporating biological and clinical variables in a scientifically and clinically relevant way (Dunkler *et al*, 2007).

The aim of the study is not revolution but evolution; the aim is not to replace current proven and established methods but to build on and improve the current prognostic methods by combining the well-established powerful clinicopathologic variables with novel biomarker information. In developing our prognostic toolkit, we aimed to provide an assay compatible with routinely processed formalin-fixed paraffin-embedded tissue, offering a level of sensitivity and predictive capabilities far better and more sophisticated than present classification systems. Our results demonstrate that NPI+ not only provides prognostic information with consideration of biological features but NPI+ also performs better than traditional NPI and can subsequently help guiding treatment decision in a personalised manner (Table 3). We believe NPI+ combines the breadth of Adjuvant Online! (Olivotto *et al*, 2005) with greater direct clinical validation, while also having depth of clinical and biological relevance of the current commercial solutions. The NPI+ will enable a more sophisticated personalised treatment tool for BC patients by providing: (1) improved prognostic analysis, (2) predict risk of disease recurrence, (3) provide health economic savings through appropriate targeting of treatment, (4) NPI+ uses routine clinical samples and robust laboratory methods integrating easily into current international clinical practice.

This study however has limitations. Therapy decisions of the current study patients’ cohort were based on similar prognostic markers at the time point of the first diagnosis with the potential of adjuvant therapy confounding effect. There may be an under-representation of cases without chemotherapy in the group of

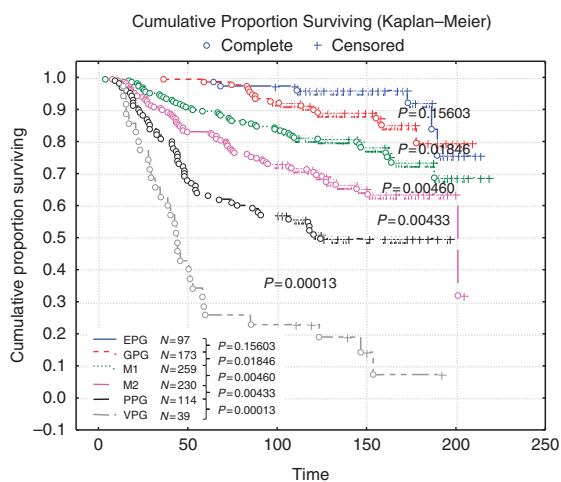


Figure 4. Survival for each of the classic NPI groups in the whole patient set. Time is shown in months.

Table 3. Comparison of the traditional NPI with NPI+

Traditional NPI	NPI+
Applicable to all forms of primary invasive breast cancer	Applicable to all forms of primary invasive breast cancer but initial phase of NPI+ classification categorises into one of seven molecular classes
Applies equal weighting of prognostic factors (histological grade, lymph-node stage and tumour size) to all types of invasive breast cancer without consideration for molecular classes	Second phase of NPI+ classification uses prognostic factors and weighting relevant to each molecular class. Additional prognostic factors such as lymphovascular and invasion progesterone receptor are included in the formulae
Stratifies in terms of expected prognosis	Stratifies effectively in each molecular class identifying patients whose outcome is as expected following standard therapy vs those who have a suboptimal outcome and may benefit from alternative/additional forms of treatment

Abbreviation: NPI+ = Nottingham prognostic index plus.

patients with a low initial NPI (good prognostic group), likewise the group of patients without a chemotherapy in patients with a high initial NPI (poor prognostic group) is rather low. This is a recognised limitation of prognostic marker and risk stratifiers assessment in the current era in which depriving patients from adjuvant treatment cannot be ethically justified. Initial results of this study indicate a prognostic value when patients were stratified based on the systemic therapy. Currently, additional cohorts are being tested to provide sufficient number in the different treatment subgroups. Although phenotypic classification into core luminal, basal and HER2 classes is possible using smaller panels of three to five antibodies (Carey *et al*, 2006; Cheang *et al*, 2008), such limited panels cannot further subclassify these core groups. Our study clearly demonstrates that using a larger panel of 10 biomarkers a higher level of stratification is achieved that may have direct and important clinical relevance.

In conclusion, this study provides proof-of-principle evidence for the development of a novel prognostic index (NPI+) that combines both established clinicopathologic and biological features of BC. Validation in different national and international tumour series is currently underway. Furthermore, its clinical utility and impact on health economics will be typically assessed in a prospective randomised clinical trial.

ACKNOWLEDGEMENTS

We thank Chris Sheehan and Caroline Sykes. This study was funded by the MRC DPFS scheme to establish a biomarker-based prognostic assay (NPI+) for breast cancer by integrating this discrete panel of ten predictive biomarkers of long-term survival and therapeutic response with existing clinical and molecular pathology knowledge to support individualised clinical decision making.

REFERENCES

- Abd El-Rehim DM, Ball G, Pinder SE, Rakha E, Paish C, Robertson JF, Macmillan D, Blamey RW, Ellis IO (2005) High-throughput protein expression analysis using tissue microarray technology of a large well-characterised series identifies biologically distinct classes of breast cancer confirming recent cDNA expression analyses. *Int J Cancer* **116**(3): 340–350.
- Ambrogio F, Biganzoli E, Querzoli P, Ferretti S, Boracchi P, Alberti S, Marubini E, Nenci I (2006) Molecular subtyping of breast cancer from traditional tumor marker profiles using parallel clustering methods. *Clin Cancer Res* **12**(3 Pt 1): 781–790.
- Balslev I, Axelsson CK, Zedeler K, Rasmussen BB, Carstensen B, Mouridsen HT (1994) The Nottingham Prognostic Index applied to 9,149 patients from the studies of the Danish Breast Cancer Cooperative Group (DBCG). *Breast Cancer Res Treat* **32**(3): 281–290.
- Beckmann MW, Niederacher D, Schnurch HG, Gusterson BA, Bender HG (1997) Multistep carcinogenesis of breast cancer and tumour heterogeneity. *J Mol Med* **75**(6): 429–439.
- Blamey RW, Ellis IO, Pinder SE, Lee AH, Macmillan RD, Morgan DA, Robertson JF, Mitchell MJ, Ball GR, Haybittle JL, Elston CW (2007) Survival of invasive breast cancer according to the Nottingham Prognostic Index in cases diagnosed in 1990–1999. *Eur J Cancer* **43**(10): 1548–1555.
- Brown J, Jones M, Benson EA (1993) Comment on the Nottingham Prognostic Index. *Breast Cancer Res Treat* **25**(3): 283.
- Callagy G, Cattaneo E, Daigo Y, Happerfield L, Bobrow LG, Pharoah PD, Caldas C (2003) Molecular classification of breast carcinomas using tissue microarrays. *Diagn Mol Pathol* **12**(1): 27–34.
- Carey LA, Perou CM, Livasy CA, Dressler LG, Cowan D, Conway K, Karaca G, Troester MA, Tse CK, Edmiston S, Deming SL, Geradts J, Cheang MC, Nielsen TO, Moorman PG, Earp HS, Millikan RC (2006) Race, breast cancer subtypes, and survival in the Carolina Breast Cancer Study. *JAMA* **295**(21): 2492–2502.
- Carlson RW, Brown E, Burstein HJ, Gradishar WJ, Hudis CA, Loprinzi C, Mamounas EP, Perez EA, Pritchard K, Ravdin P, Recht A, Somlo G, Theriault RL, Winer EP, Wolff AC (2006) NCCN Task Force Report: adjuvant therapy for breast cancer. *J Natl Compr Canc Netw* **4**(Suppl 1): S1–S26.
- Cheang MC, Voduc D, Bajdik C, Leung S, McKinney S, Chia SK, Perou CM, Nielsen TO (2008) Basal-like breast cancer defined by five biomarkers has superior prognostic value than triple-negative phenotype. *Clin Cancer Res* **14**(5): 1368–1376.
- Clark GM (1994) Do we really need prognostic factors for breast cancer? *Breast Cancer Res Treat* **30**(2): 117–126.
- D'Eredita G, Giardina C, Martellotta M, Natale T, Ferrarese F (2001) Prognostic factors in breast cancer: the predictive value of the Nottingham Prognostic Index in patients with a long-term follow-up that were treated in a single institution. *Eur J Cancer* **37**(5): 591–596.
- Darb-Esfahani S, Loibl S, Muller BM, Roller M, Denkert C, Komor M, Schluns K, Blohmer JU, Budczies J, Gerber B, Noske A, du Bois A, Weichert W, Jackisch C, Dietel M, Richter K, Kaufmann M, von Minckwitz G (2009) Identification of biology-based breast cancer types with distinct predictive and prognostic features: role of steroid hormone and HER2 receptor expression in patients treated with neoadjuvant anthracycline/taxane-based chemotherapy. *Breast Cancer Res* **11**(5): R69.
- Dunkler D, Michiels S, Schemper M (2007) Gene expression profiling: does it add predictive accuracy to clinical characteristics in cancer prognosis? *Eur J Cancer* **43**(4): 745–751.
- Ellis IO, Bell J, Todd JM, Williams M, Dowle C, Robins AR, Elston CW, Blamey RW, Baldwin RW (1987) Evaluation of immunoreactivity with monoclonal antibody NCRC 11 in breast carcinoma. *Br J Cancer* **56**(3): 295–299.
- Ellis IO, Pinder SE, Lee AH, Elston CW (1999) A critical appraisal of existing classification systems of epithelial hyperplasia and in situ neoplasia of the breast with proposals for future methods of categorization: where are we going? *Semin Diagn Pathol* **16**(3): 202–208.
- Foulkes WD, Grainge MJ, Rakha EA, Green AR, Ellis IO (2009) Tumor size is an unreliable predictor of prognosis in basal-like breast cancers and does not correlate closely with lymph node status. *Breast Cancer Res Treat* **117**(1): 199–204.
- Foulkes WD, Reis-Filho JS, Narod SA (2010) Tumor size and survival in breast cancer—a reappraisal. *Nat Rev Clin Oncol* **7**(6): 348–353.
- Friendly M (2000) *Visualizing Categorical Data*. SAS Institute: Cary, NC.
- Galea MH, Blamey RW, Elston CE, Ellis IO (1992) The Nottingham Prognostic Index in primary breast cancer. *Breast Cancer Res Treat* **22**(3): 207–219.
- Garcia-Caballero T, Grabau D, Green AR, Gregory J, Schad A, Kohlwe E, Ellis IO, Watts S, Mollerup J (2010) Determination of HER2 amplification in primary breast cancer using dual-colour chromogenic in situ hybridization is comparable to fluorescence in situ hybridization: a European multicentre study involving 168 specimens. *Histopathology* **56**(4): 472–480.
- Goldhirsch A, Ingle JN, Gelber RD, Coates AS, Thurlimann B, Senn HJ (2009) Thresholds for therapies: highlights of the St Gallen International Expert Consensus on the primary therapy of early breast cancer 2009. *Ann Oncol* **20**(8): 1319–1329.
- Goulding H, Pinder S, Cannon P, Pearson D, Nicholson R, Snead D, Bell J, Elston CW, Robertson JF, Blamey RW, Ellis IO (1995) A new method for the assessment of oestrogen receptor status on routine formalin-fixed tissue samples. *Hum Pathol* **26**: 291–294.
- Green AR, Powe DG, Rakha EA, Soria D, Lemetre C, Nolan CC, Barros FF, Macmillan RD, Garibaldi JM, Ball GR, Ellis IO (2013) Identification of key clinical phenotypes of breast cancer using a reduced panel of protein biomarkers. *Br J Cancer* **109**(7): 1886–1894.
- Haybittle JL, Blamey RW, Elston CW, Johnson J, Doyle PJ, Campbell FC, Nicholson RI, Griffiths K (1982) A prognostic index in primary breast cancer. *Br J Cancer* **45**(3): 361–366.
- Lishman SC, Lakhani SR (1999) Atypical lobular hyperplasia and lobular carcinoma in situ: surgical and molecular pathology. *Histopathology* **35**(3): 195–200.
- McCarty Jr KS, Miller LS, Cox EB, Konrath J, McCarty Sr KS (1985) Estrogen receptor analyses. Correlation of biochemical and immunohistochemical methods using monoclonal antireceptor antibodies. *Arch Pathol Lab Med* **109**(8): 716–721.

- Nielsen TO, Parker JS, Leung S, Voduc D, Ebbert M, Vickery T, Davies SR, Snider J, Stijleman IJ, Reed J, Cheang MC, Mardis ER, Perou CM, Bernard PS, Ellis MJ (2010) A comparison of PAM50 intrinsic subtyping with immunohistochemistry and clinical prognostic factors in tamoxifen-treated estrogen receptor-positive breast cancer. *Clin Cancer Res* **16**(21): 5222–5232.
- Olivotto IA, Bajdik CD, Ravdin PM, Speers CH, Coldman AJ, Norris BD, Davis GJ, Chia SK, Gelmon KA (2005) Population-based validation of the prognostic model ADJUVANT! for early breast cancer. *J Clin Oncol* **23**(12): 2716–2725.
- Paik S, Shak S, Tang G, Kim C, Baker J, Cronin M, Baehner FL, Walker MG, Watson D, Park T, Hiller W, Fisher ER, Wickerham DL, Bryant J, Wolmark N (2004) A multigene assay to predict recurrence of tamoxifen-treated, node-negative breast cancer. *N Engl J Med* **351**(27): 2817–2826.
- Parker JS, Mullins M, Cheang MC, Leung S, Voduc D, Vickery T, Davies S, Fauron C, He X, Hu Z, Quackenbush JF, Stijleman IJ, Palazzo J, Marron JS, Nobel AB, Mardis E, Nielsen TO, Ellis MJ, Perou CM, Bernard PS (2009) Supervised risk predictor of breast cancer based on intrinsic subtypes. *J Clin Oncol* **27**(8): 1160–1167.
- Perou CM, Jeffrey SS, van de Rijn M, Rees CA, Eisen MB, Ross DT, Pergamenschikov A, Williams CF, Zhu SX, Lee JC, Lashkari D, Shalon D, Brown PO, Botstein D (1999) Distinctive gene expression patterns in human mammary epithelial cells and breast cancers. *Proc Natl Acad Sci USA* **96**(16): 9212–9217.
- Prat A, Cheang MC, Martin M, Parker JS, Carrasco E, Caballero R, Tyldesley S, Gelmon K, Bernard PS, Nielsen TO, Perou CM (2013) Prognostic significance of progesterone receptor-positive tumor cells within immunohistochemically defined luminal A breast cancer. *J Clin Oncol* **31**(2): 203–209.
- Rakha EA, El-Sayed ME, Lee AH, Elston CW, Grainge MJ, Hodi Z, Blamey RW, Ellis IO (2008) Prognostic significance of Nottingham histologic grade in invasive breast carcinoma. *J Clin Oncol* **26**(19): 3153–3158.
- Rakha EA, Martin S, Lee AH, Morgan D, Pharoah PD, Hodi Z, Macmillan D, Ellis IO (2012) The prognostic significance of lymphovascular invasion in invasive breast carcinoma. *Cancer* **118**(15): 3670–3680.
- Rakha EA, Reis-Filho JS, Baehner F, Dabbs DJ, Decker T, Eusebi V, Fox SB, Ichihara S, Jacquemier J, Lakhani SR, Palacios J, Richardson AL, Schnitt SJ, Schmitt FC, Tan PH, Tse GM, Badve S, Ellis IO (2010) Breast cancer prognostic classification in the molecular era: the role of histological grade. *Breast Cancer Res* **12**(4): 207.
- Rasmani KA, Garibaldi JM, Shen Q, Ellis I (2009) Linguistic Rulesets Extracted from a Quantifier-based Fuzzy Classification System. *Proc IEEE Int Conf Fuzzy Syst*, 11–13 December 2008. San Diego, CA, USA, pp 1204–1209.
- Ravdin PM, Siminoff LA, Davis GJ, Mercer MB, Hewlett J, Gerson N, Parker HL (2001) Computer program to assist in making decisions about adjuvant therapy for women with early breast cancer. *J Clin Oncol* **19**(4): 980–991.
- Soria D, Garibaldi JM, Ambrogi F, Green AR, Powe D, Rakha E, Macmillan RD, Blamey RW, Ball G, Lisboa PJ, Etchells TA, Boracchi P, Biganzoli E, Ellis IO (2010) A methodology to identify consensus classes from clustering algorithms applied to immunohistochemical data from breast cancer patients. *Comput Biol Med* **40**(3): 318–330.
- Sorlie T, Perou CM, Tibshirani R, Aas T, Geisler S, Johnsen H, Hastie T, Eisen MB, van de Rijn M, Jeffrey SS, Thorsen T, Quist H, Matese JC, Brown PO, Botstein D, Eystein Lonning P, Borresen-Dale AL (2001) Gene expression patterns of breast carcinomas distinguish tumor subclasses with clinical implications. *Proc Natl Acad Sci USA* **98**(19): 10869–10874.
- van't Veer LJ, Dai H, van de Vijver MJ, He YD, Hart AA, Bernards R, Friend SH (2003) Expression profiling predicts outcome in breast cancer. *Breast Cancer Res* **5**(1): 57–58.
- van't Veer LJ, Dai H, van de Vijver MJ, He YD, Hart AA, Mao M, Peterse HL, van der Kooy K, Marton MJ, Witteveen AT, Schreiber GJ, Kerkhoven RM, Roberts C, Linsley PS, Bernards R, Friend SH (2002) Gene expression profiling predicts clinical outcome of breast cancer. *Nature* **415**(6871): 530–536.
- van de Vijver MJ, He YD, van't Veer LJ, Dai H, Hart AA, Voskuil DW, Schreiber GJ, Peterse JL, Roberts C, Marton MJ, Parrish M, Atsma D, Witteveen A, Glas A, Delahaye L, van der Velde T, Bartelink H, Rodenhuis S, Rutgers ET, Friend SH, Bernards R (2002) A gene-expression signature as a predictor of survival in breast cancer. *N Engl J Med* **347**(25): 1999–2009.
- Wolff AC, Hammond ME, Schwartz JN, Hagerty KL, Allred DC, Cote RJ, Dowsett M, Fitzgibbons PL, Hanna WM, Langer A, McShane LM, Paik S, Pegram MD, Perez EA, Press MF, Rhodes A, Sturgeon C, Taube SE, Tubbs R, Vance GH, van de Vijver M, Wheeler TM, Hayes DF (2007) American Society of Clinical Oncology/College of American Pathologists guideline recommendations for human epidermal growth factor receptor 2 testing in breast cancer. *J Clin Oncol* **25**(1): 118–145.



This work is licensed under the Creative Commons Attribution-NonCommercial-Share Alike 3.0 Unported License. To view a copy of this license, visit <http://creativecommons.org/licenses/by-nc-sa/3.0/>