

RESEARCH

Open Access

Synergistic anti-inflammatory effect: simvastatin and pioglitazone reduce inflammatory markers of plasma and epicardial adipose tissue of coronary patients with metabolic syndrome

Adriana Ferreira Grosso¹, Sérgio Ferreira de Oliveira¹, Maria de Lourdes Higuchi¹, Desidério Favarato¹, Luís Alberto de Oliveira Dallan¹ and Protásio Lemos da Luz^{1,2*}

Abstract

Background: The inappropriate secretion of adipocytokines plays a critical role in chronic inflammatory states associated with obesity-linked type 2 diabetes and atherosclerosis. The pleiotropic actions of simvastatin and pioglitazone on epicardial adipose tissue (EAT) are unknown. This study assessed the anti-inflammatory actions of simvastatin and pioglitazone on EAT in patients with coronary artery disease (CAD) and metabolic syndrome (MS).

Methods: A total of 73 patients with multivessel CAD who underwent elective bypass grafting were non-randomly allocated to one of four subgroups: Control (n = 17), simvastatin (20 mg/day, n = 20), pioglitazone (15 mg or 30 mg/day, n = 18), or simvastatin + pioglitazone (20 mg/day + 30 mg/day, respectively, n = 18); 20 valvular patients were also included. EAT samples were obtained during surgery. The infiltration of macrophages and lymphocytes and cytokines secretion were investigated using immunohistochemical staining and compared to plasma inflammatory biomarkers.

Results: Simvastatin significantly reduced plasma interleukin-6, leptin, resistin and monocyte chemoattractant protein-1 (p < 0.001 for all); pioglitazone reduced interleukin-6, tumoral necrose factor-alpha, resistin and matrix metalloproteinase-9 (p < 0.001 for all). Simvastatin + pioglitazone treatment further reduced plasmatic variables, including interleukin-6, tumoral necrose factor-alpha, resistin, asymmetric dimethylarginine and metalloproteinase-9 vs. the control group (p < 0.001). Higher plasma adiponectin and lower high sensitivity C-reactive protein concentrations were found simultaneously in the combined treatment group. A positive correlation between the mean percentage systemic and tissue cytokines was observed after treatments. T- and B-lymphocytes and macrophages clusters were observed in the fat fragments of patients treated with simvastatin for the first time.

Conclusions: Pioglitazone, simvastatin or combination treatment substantially reduced EAT and plasma inflammatory markers in CAD and MS patients. These tissue effects may contribute to the control of coronary atherosclerosis progression.

Keywords: Atherosclerosis, Epicardial adipose tissue, Inflammation, Pioglitazone, Simvastatin

* Correspondence: protasio.luz@incor.usp.br

¹Heart Institute (InCor) HCFMUSP, University of São Paulo Medical School, São Paulo, Brazil

²Instituto do Coração do Hospital das Clínicas da Faculdade de Medicina da, Universidade de São Paulo, Av. Dr. Enéas de Carvalho Aguiar, 44, 5º andar, bloco II, sala 8 Cerqueira César, 05403-000 São Paulo, SP, Brazil

Background

Adipose tissue stores and releases energy, and it also exerts important autocrine/paracrine and endocrine functions, especially through the secretion of bioactive cytokines known as adipokines. Therefore, visceral fat accumulation causes inflammatory cells infiltration and cytokine expression. Adipose tissue macrophages play a critical role in chronic inflammatory states [1] that are associated with obesity-linked diseases, such as diabetes and atherosclerosis [2-4].

Epicardial adipose tissue (EAT) has received considerable attention. EAT is a recognized source of inflammatory cytokines, which may contribute to the pathogenesis of coronary atherosclerotic lesions [5]. Inflammatory mediators from extravascular adipocytes promote coronary artery disease, which may explain the increased cardiovascular risk in patients with insulin resistance [6], especially in obese individuals [7]. Several human studies indicate that pericardial fat deposits are more metabolically active than subcutaneous adipose tissue [5,6]. For example, EAT from patients undergoing coronary bypass grafting contained significantly more interleukin-1 β (IL-1 β), interleukin-6 (IL-6), monocyte chemoattractant protein-1 (MCP-1) and tumoral necrosis factor- α (TNF- α) mRNA and protein than subcutaneous adipose tissue [5]. Cytokine concentrations in epicardial fat correlated with an accumulation of inflammatory cells, such as T-lymphocytes, macrophages and mast cells, in the vicinity of EAT. Epicardial mRNA levels for CD45, a marker of macrophage infiltration, were significantly increased compared to abdominal fat from patients subjected to bypass grafting [6]. The infiltration of macrophages and CD-8-positive T cells in the EAT of patients subjected to bypass was greater than patients who underwent surgery for aortic or mitral valve replacement [8]. Finally, patients with advanced CHD exhibited lower epicardial adiponectin levels, which may contribute to the increased cardiovascular risk [9-11].

Obesity predisposes humans and animals to an accumulation of excess epicardial fat [6,12], and its mass, assessed using transthoracic echocardiography and magnetic resonance in healthy subjects, may be a novel indicator of cardiovascular risk [13,14]. These facts support the importance of analyses of therapeutic interventions to interfere with EAT [15]. Pioglitazone and simvastatin have pleiotropic effects and reduce pro-inflammatory markers and improve insulin sensitivity [16-18]. However, no documentation of change in EAT inflammatory cell expression and adipokines after Simvastatin and/or Pioglitazone therapies in CAD patients with MS. This study assessed the anti-inflammatory effects of these compounds on EAT and correlated them with plasma/tissue inflammatory markers because tissue effect is an objective criteria for drug evaluations. Our findings demonstrated strong anti-inflammatory actions on EAT and excellent correlations between plasma and tissue effects.

Methods

Subjects

The Ethics Committee of the Heart Institute (InCor) and Hospital das Clinicas of the University of São Paulo Medical School approved the protocol. Seventy-three consecutive patients with multivessel CAD and MS who underwent bypass grafting and 20 valvar patients who underwent surgery for mitral valve replacement were enrolled. The attending heart team allocated the 73 CAD patients to one of four groups based on clinical and angiographic evaluation: control (n = 17), simvastatin alone (20 mg/day, n = 20), pioglitazone alone (30 mg/day, n = 18), or simvastatin + pioglitazone (20 mg/day + 30 mg/day, respectively, n = 18). Randomization was not necessary because the primary objective of the study was to correlate plasma and tissue effects rather than directly compare the two drugs. Treatments were initiated three months before surgery and maintained until the operation. All subjects who received pioglitazone were type 2 diabetics. No lipid-lowering drugs were administered in the control and pioglitazone groups, and statins were initiated during the in-hospital postoperative period. MS was defined according to NCEP-ATP III criteria [19,20]. Patients affected by liver disease, renal failure, neoplastic diseases, HIV positive, metabolic diseases, or those who smoked were excluded. Written informed consent was obtained from each patient.

Blood collection

Peripheral venous blood was drawn into pyrogen-free tubes with or without EDTA as an anticoagulant immediately before surgery after 10–12 h overnight fast. Plasma glucose was determined using spectrophotometric methods (Glucose Flex Reagent Cartridge, Dade Behring). An ELISA kit (R&D Systems) quantified adiponectin, leptin, resistin, MCP-1, matrix metalloproteinase-9 (MMP-9) and asymmetric dimethylarginine (ADMA) in human serum. IL-6, TNF- α and insulin concentrations in human serum were quantified using the enzyme immuno-metric assay, Immulite 2000. Quantification of serum HbA1c level was accomplished using the Hemoglobin A1c test Tinaquant II Roche/Hitachi system.

Immunohistochemical staining

Adipose tissue samples (average 0.5-1.0 g) were taken near the proximal tract of the right coronary artery at the beginning of surgery for cardiopulmonary bypass before heparin administration. Tissue was formalin-fixed, and paraffin-embedded tissue sections were deparaffinized in xylene and dehydrated in a graded series of ethanol. Endogenous peroxidase activity was quenched using 6% hydrogen peroxide, followed by incubation with CAS-Block™ Invitrogen for 10 min. Antigen retrieval was performed in Tris-ethylenediaminetetraacetic acid buffer (pH 9.0) for 10 min. Immunohistochemical staining

Table 1 Demographic characteristics

	Valvar (n = 20)	P* value	CAD/MS group				P** value
			Control (n = 17)	Simvastatin (n = 20)	Pioglitazone (n = 18)	Pioglitazone + Simvastatin (n = 18)	
Age (yrs)	52.3 ± 8.0	<0.001	64.3 ± 6.06	60.1 ± 6.38	57.6 ± 5.89	60.1 ± 7.08	0.024
Male (%)	6(30)	0.005	12(70.6)	16(80)	10 (55.6)	10 (55.6)	0.314
Waist circumference (cm)	78.4 ± 11.9	<0.001	103.6 ± 6.43	103.2 ± 8.62	103.7 ± 8.09	105.2 ± 9.06	0.883
Systolic BP (mmHg)	113 ± 10.3	<0.001	145 ± 17.1	134 ± 15.1	162 ± 20.3	145 ± 13.8	<0.001
Diastolic BP (mmHg)	72 ± 11.5	0.006	87 ± 11.8	78 ± 10.3	85 ± 12	73 ± 11.2	0.001
Baseline Weight (Kg)	58.9 ± 12.4	<0.001	85.8 ± 13.7	76.7 ± 10.8	80.6 ± 13.7	83.9 ± 10.2	0.122
Final Weight (Kg)	57.2 ± 11.9	<0.001	82.5 ± 12.9	74.6 ± 10.5	81.4 ± 14.6	83.3 ± 9.3	0.102

Values are means ± SD or n(%). CAD = coronary artery disease; BP = blood pressure. P* value = Comparison between non-CAD group and CAD/MS group. P** value = Comparison between CAD/MS groups.

of 5-µm-thick sections was performed using primary antibodies against CD20/lymphocytes B (1:1000, clone L26, Dako, Denmark), CD45/lymphocytes T (1:5, clone UCHL, Dako, Denmark), CD68/macrophages (1:320, clone KP-1, Dako, Denmark), alpha tumor necrosis factor (TNF-α) (1:20, clone 28401, R&D System, UK), interleukin-6 (IL-6) (1:10, clone 1936, R&D System, UK), adiponectin (1:2000, clone 6D, US Biological), leptin (1:10, clone AF 398, R&D System, UK) and resistin (1:50, clone LS-B2879, Lifespan, USA) followed by incubation with the secondary antibody Picture™MAX Polymer Invitrogen. Localization of the primary antibody was visualized with 3.3'-diaminobenzidine

and counter-stained with hematoxylin. The percentage of positive area for cells and inflammatory markers was counted in three fields (edges, center and adjacent to vessels) using an image analyzer (Leica Cambridge Quantimet) with a 20X objective in a double-blind fashion.

Statistical analysis

The data are expressed as the means ± standard deviation (SD). One-way ANOVA followed by Bonferroni test compared the mean values of continuous variables between treatment groups followed by post hoc analysis. The sample size provided a power of 0.80 at the alpha = 0.05 level

Table 2 Laboratory measurements

	Valvar (n = 20)	P* value	CAD/MS group				P** value
			Control (n = 17)	Simvastatin (n = 20)	Pioglitazone (n = 18)	Pioglitazone + Simvastatin (n = 18)	
TG (mg/dL)	103.1 ± 40.48	0.002	162.88 ± 55.89	152 ± 68.64	167.89 ± 61.29	110.39 ± 22.1	0.011
LDL-c (mg/dL)	103.5 ± 29.68	0.381	123.76 ± 19.13	92.45 ± 33.57	142 ± 31.15	89.06 ± 25.62	<0.001
HDL-c (mg/dL)	44.1 ± 13.88	<0.001	34.35 ± 3.9	40.25 ± 7.5	41.39 ± 8.36	41.89 ± 6.33	0.006
Glucose (mg/dL)	82.95 ± 11.77	<0.001	101.18 ± 12.34	93.2 ± 17.11	120.44 ± 23.99*	144.44 ± 31.89*	<0.001
HbA1c (%)	5.63 ± 0.41	0.003	5.78 ± 0.49	5.59 ± 0.57	6.72 ± 1.55	6.41 ± 1.16	0.004
Urea (mg/dL)	17 ± 4.11	0.3	25 ± 7.5	21 ± 3.3	31 ± 2.22	30 ± 2.24	0.011
Creatinine (mg/dL)	0.9 ± 0.2	0.42	1.1 ± 0.8	1.0 ± 0.42	1.2 ± 0.9	1.25 ± 0.7	0.01
hsCRP (mg/L)	3.89 ± 1.49	0.466	7.42 ± 1.45	1.93 ± 1.59	2.97 ± 1.21	1.88 ± 0.65	<0.001
IL-6 (pg/mL)	3.51 ± 0.95	0.811	5.3 ± 1.06	3.29 ± 1.15	3.15 ± 1.15	2.68 ± 0.69	<0.001
TNF-α (pg/mL)	14.71 ± 4.06	0.317	16.58 ± 2.4	18.28 ± 10.91	7.92 ± 1.03	8.65 ± 2.1	<0.001
Leptin (pg/mL)	3519.75 ± 1997.54	<0.001	17043.69 ± 2065.78	4836.25 ± 1310.68	42899.54 ± 9011.58	13979.94 ± 1622.5	<0.001
Resistin (ng/mL)	4.34 ± 1.09	<0.001	12.1 ± 1.38	6.41 ± 0.97	5.41 ± 1.32	7.41 ± 0.99	<0.001
Adiponectin (mg/mL)	15280 ± 4389.45	<0.001	1480.59 ± 426.02	4601.85 ± 1044.07	6099.38 ± 1227.84	7427.43 ± 1229.81	<0.001
MCP-1 (pg/mL)	73 ± 6.23	<0.001	341.93 ± 66.16	66.48 ± 11.2	381.55 ± 69.28	325.98 ± 62.07	<0.001
ADMA (µmol/L)	0.47 ± 0.13	0.595	0.53 ± 0.14	0.47 ± 0.12	0.44 ± 0.33	0.34 ± 0.11	0.05
MMP-9 (ng/mL)	553.35 ± 157.38	0.146	577.08 ± 147.01	672.65 ± 340.37	216.54 ± 32.6	362.76 ± 103.57	<0.001

Values are means ± SD. TG = triglyceride; LDL = low-density lipoprotein cholesterol; HDL = high-density lipoprotein cholesterol; HbA1c = hemoglobin A1c. In the Pioglitazone only and Simvastatin + pioglitazone groups, the baseline values of glucose were higher than final values. hsCRP = C-reactive protein IL-6 = interleukin-6; TNF-α = tumoral necrosis factor. P* value = Comparison between non-CAD group and CAD/MS group. P** value = Comparison between CAD/MS groups.

of significance to detect a difference of 0.5 (expressed as adiponectin/actin ratio) in adiponectin protein expression between the CAD and valvar groups. Two-tailed $p < 0.05$ indicated statistical significance. Analyses were performed using SPSS version 19.

Results

Demographic data

Patient demographic characteristics are summarized in Table 1. CAD/MS patients were significantly older and had larger waist circumferences and higher initial and final weights than the valvar group. CAD/MS groups were homogeneous for males sex (65.7%) and waist circumference. All CAD/MS subjects were hypertensive, 10% suffered a myocardial infarction in the past, 2% underwent a coronary angioplasty and 2% had previous CABG. Left ventricular ejection fraction, as assessed using LV angiogram, was above 45% in all patients.

Laboratory data

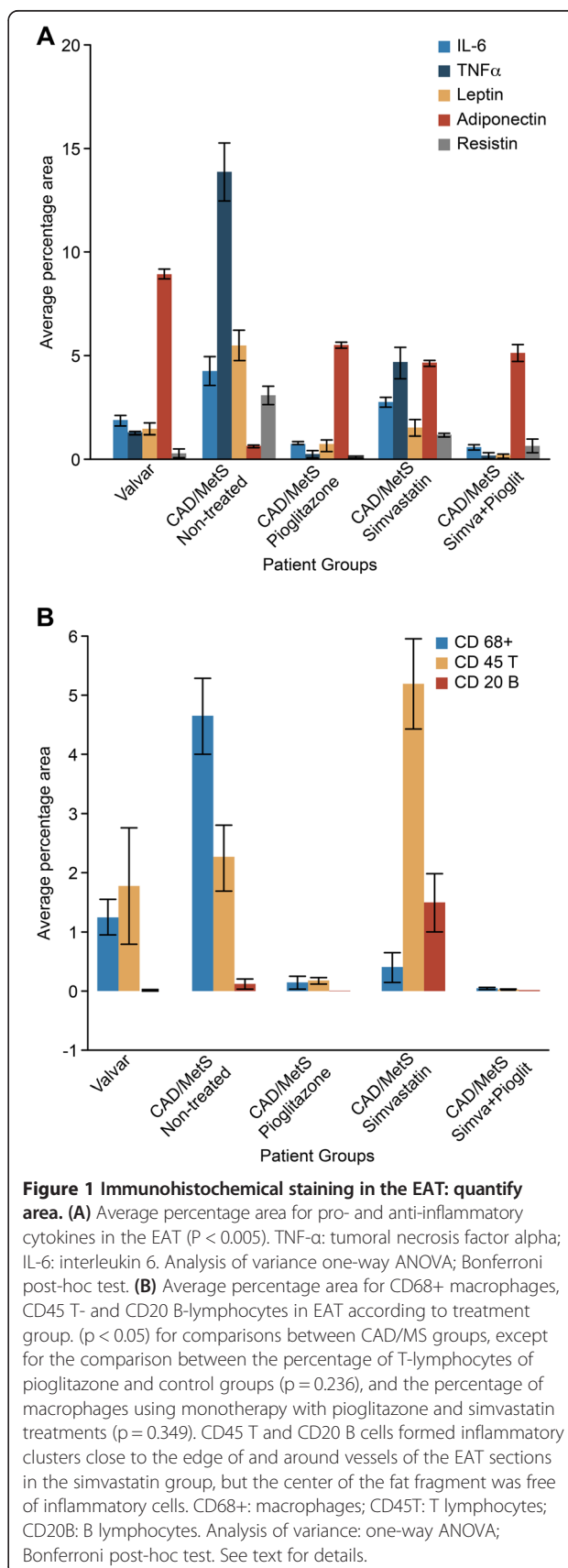
Table 2 summarizes final laboratory values. The majority of CAD/MS groups had higher triglycerides, HDL-c, glucose, HbA1c, leptin, resistin and MCP-1 plasma levels than valvar patients. Valvar patients showed higher plasma adiponectin than patients with CAD/MS ($p < 0.001$).

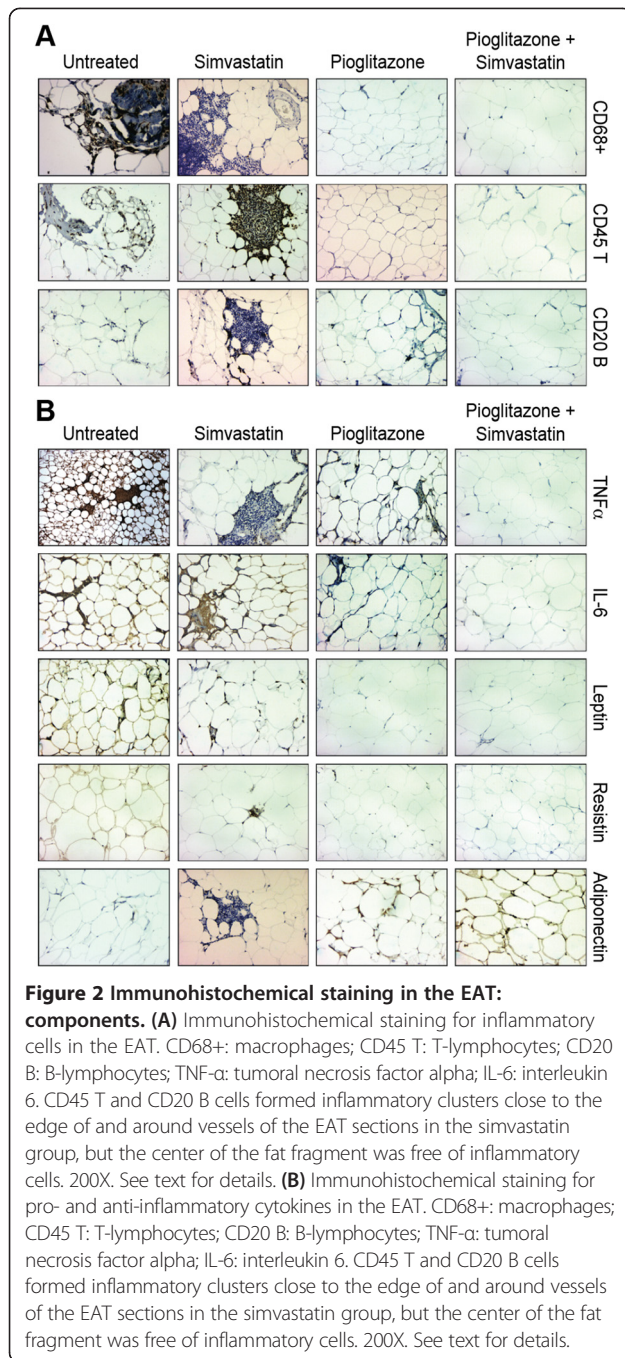
Treatment effects on blood parameters

Treatment with simvastatin alone, pioglitazone alone and simvastatin + pioglitazone significantly reduced plasma CRP in CAD/MS patients compared to the control group ($p < 0.001$). Simvastatin monotherapy significantly reduced plasma IL-6, leptin, resistin and MCP-1 ($p < 0.001$ for all), but pioglitazone monotherapy reduced IL-6, TNF- α , resistin and MMP-9 compared to the control group ($p < 0.001$ for all). Finally, simvastatin + pioglitazone treatment reduced IL-6, TNF- α , resistin, ADMA and MMP-9 compared to the control group ($p < 0.001$). All treatments increased adiponectin plasma levels ($p < 0.001$ for all). Higher plasma adiponectin and lower hsCRP concentrations were found simultaneously in the combined treatment group.

Treatment effects on epicardial adipose tissue

Pioglitazone alone and simvastatin + pioglitazone treatment were associated with a lower mean percentage positive area of CD68+/macrophages, CD45/T-lymphocytes, TNF- α , IL-6, leptin and resistin in the EAT fragments compared to controls ($p < 0.001$). Conversely, a significantly higher mean percentage positive area for adiponectin was observed (Figures 1 and 2). No significant differences in the mean percentage positive area for CD20/B-lymphocytes were observed between pioglitazone alone and the control group (Figure 1).





Some morphological aspects are noteworthy. Inflammatory cells and cytokines were distributed over the adipose tissue area in the control group. CD45 T-lymphocytes and CD20 B-lymphocytes formed inflammatory clusters close to the edge and around vessels of the adipose tissue in the simvastatin group, but the center of the fat fragment was free of inflammatory cells (Figure 2). Therefore, the mean percentage positive area was larger in the simvastatin group compared to the control group ($p < 0.05$) (Figure 1).

Correlation between plasma values and tissue biomarkers

We investigated whether the treatment effects on plasma biomarkers of inflammation produced corresponding effects on EAT. Positive correlations between plasma cytokines and correspondent cytokines in EAT were found after simvastatin, pioglitazone and pioglitazone + simvastatin treatments (Figure 3). TNF- α after treatment with simvastatin ($r = -0.025$, $p = 0.33$) and leptin after treatment with pioglitazone ($r = -0.877$, $p < 0.0001$) showed negative correlations. A positive correlation was found between serum hsCRP and the percentage of macrophages in EAT, which indicates simultaneous reductions in plasma and tissue values (Figure 3F). No correlations between plasma lipid variables and tissue inflammatory variables were observed.

Discussion

This study found that macrophages infiltration and pro-inflammatory cytokines, TNF- α , IL-6, leptin and resistin, were decreased in the EAT of CAD/MS patients treated with simvastatin or pioglitazone, either as monotherapy or in combination. Furthermore, these treatments were also associated with an increased presence of adiponectin, an anti-inflammatory cytokine secreted by EAT. These findings reflected the observations in plasma because a positive correlation between the percentage area of macrophages in EAT and plasma hsCRP after treatments was observed. T- and B-lymphocytes and macrophage clusters were concentrated near the edge or around blood vessels in EAT fat fragments of patients treated with simvastatin, which is a novel observation.

Simvastatin + pioglitazone treatment was associated with significantly lower plasma hsPCR, IL-6, TNF- α , resistin, ADMA and MMP-9 compared to the control group. Higher plasma adiponectin and lower hsCRP concentrations in this group occurred simultaneously, which indicated a predominance of the anti-inflammatory effect. The lowest plasma leptin, resistin and MCP-1 values were found in patients treated with simvastatin alone. These findings are consistent with Jialal et al. [21], who observed that pravastatin, atorvastatin or simvastatin therapy significantly reduced hsCRP levels, which further supports an anti-inflammatory effect of statins. The PIOSTAT Study [22] found that, non-diabetic patients with cardiovascular disease and elevated hsCRP levels showed significant anti-inflammatory effects of pioglitazone that were comparable to 40 mg simvastatin. Furthermore, these authors showed that pioglitazone + simvastatin had additive effects on hsCRP with a reduction greater than 40%, but only for patients without MS. Pioglitazone, as a monotherapy and in combination, significantly reduced MMP-9 [23]. MMP-9 levels were also elevated in patients with diabetes mellitus, and treatment with glitazones effectively reduced the levels of this enzyme [24,25].

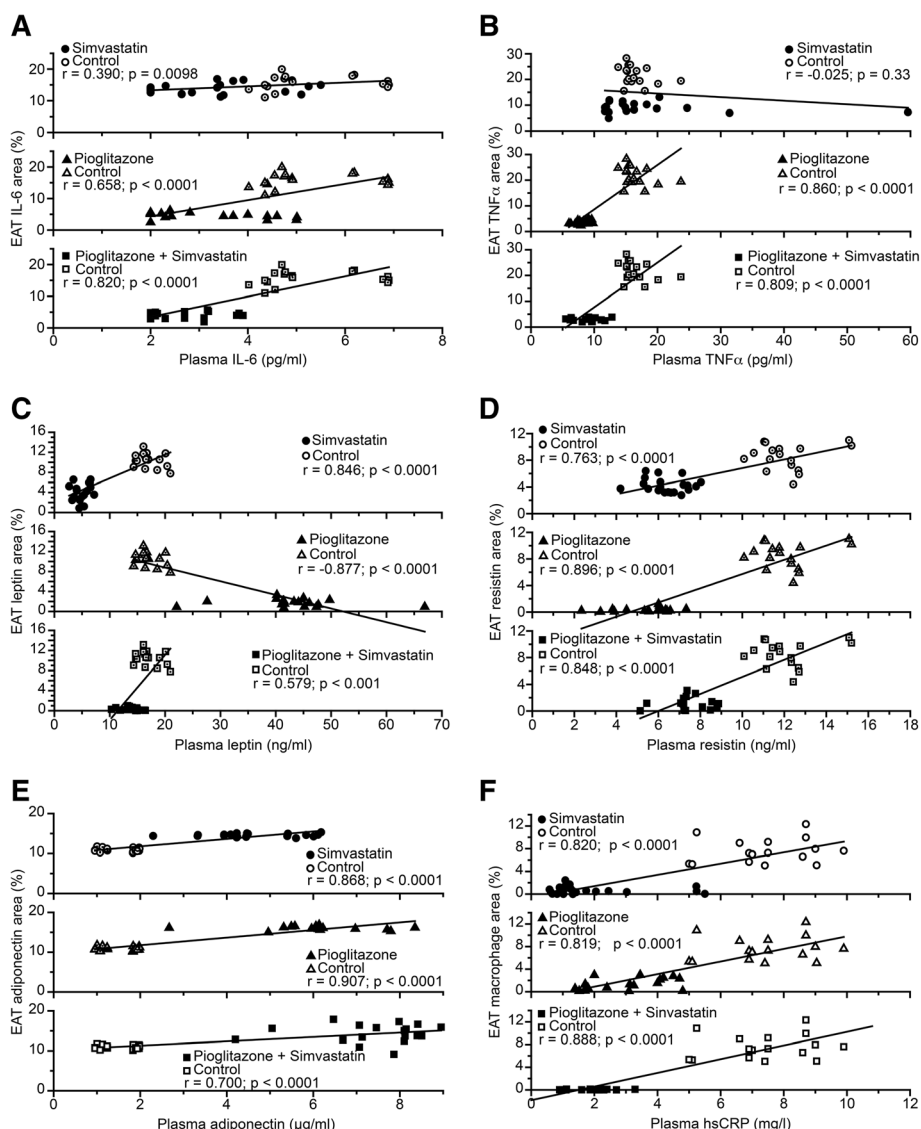


Figure 3 Correlations between plasma and EAT inflammatory variables. (A) IL-6; **(B)** TNF- α ; **(C)** Leptin. **(D)** Resistin; **(E)** Adiponectin **(F)** EAT macrophages and plasma hsCRP. TNF- α : tumor necrosis factor alpha; IL-6: interleukin 6; hsCRP: high-sensitivity C-reactive protein. See text for details.

We noted that therapeutic interventions that interfere with plasma cytokines and inflammatory markers also modify the inflammatory response in EAT of CAD/MS patients. Therefore, the mean percentage positive area with macrophages, T-lymphocytes, TNF- α , IL-6, leptin and resistin was significantly lower in EAT fragments after 90 days of pioglitazone only or simvastatin + pioglitazone therapies than the control group. EAT is a source of inflammatory cytokines, and this finding is considerably important. An augmented inflammatory response is associated with significant macrophage infiltration, which makes local adipose tissue deposits a cardiovascular risk factor [6,7,9]. This hypothesis is supported by Suganami and Hirata [9,26], who suggested

that a vicious cycle of infiltrating macrophages and adipocytes augments the inflammatory response in adipose tissue, especially in obesity-associated metabolic abnormalities, such as insulin resistance and diabetes. CAD patients with MS and type 2 diabetes were treated with pioglitazone, and this therapy was associated with decreased IL-1 β , IL-1Ra and IL-10 mRNA expression in EAT. Pro- and anti-inflammatory genes were differentially increased in EAT and selectively reduced following pioglitazone treatment [27].

We observed that the positive area for adiponectin was five times lower in CAD/MS untreated patients than after pioglitazone alone or simvastatin + pioglitazone therapies. Furthermore, positive correlations were found

between plasma cytokines and correspondent cytokines in EAT after simvastatin, pioglitazone and pioglitazone + simvastatin treatments. A positive correlation between plasma hsCRP and the mean percentage of area to macrophage in EAT was also shown. TNF- α after simvastatin treatment and leptin after pioglitazone treatment were negatively correlated, which indicated a differential effect in tissue and plasma. The decreased leptin in EAT following TZD treatment demonstrates adipose depot-specific responsiveness [28,29] or alternatively indicates that TZDs induce translational or posttranslational changes that increase protein levels without increasing mRNA levels [30]. The high leptin plasma concentrations in these circumstances are most likely due to production from subcutaneous adipose tissue [28]. However, Iacobellis et al. showed significantly lower adiponectin expression in epicardial fat isolated from patients with CAD [31]. Ouchi et al. observed a significant inverse correlation between CRP and adiponectin mRNA levels in human adipose tissue from patients with documented coronary atherosclerosis [32]. Patients with MS expressed lower EAT adiponectin levels than patients without MS [33]. Iacobellis et al. showed peripheral adiponectin levels and epicardial fat adiponectin protein expression were the best correlates of left coronary artery adiponectin. They showed that intracoronary adiponectin levels reflect systemic adiponectin levels. Epicardial adipose tissue could partially contribute to adiponectin levels in the coronary circulation [34], although that intracoronary plasma adiponectin rapidly and significantly increases in patients with CAD after CABG [35].

We also showed that T- and B-lymphocytes and macrophage clusters concentrated near the edge or around blood vessels in fat fragments of patients treated with simvastatin alone, but the center of the fat fragments was free of inflammatory cells. One possible explanation for these findings is that cell residues were driven to tertiary lymphoid organs, which are ectopic accumulations of lymphoid cells that arise under environmental influences, especially during chronic inflammation. This hypothesis is supported by the observation that prolonged inflammatory cytokine production and/or lymphoid chemokine expression is sufficient to induce lymphoid neogenesis [36]. Additionally, lymph nodes during inflammation are characterized by an increase in blood flow and T- and B-lymphocyte migration [37]. Finally, clinical therapies can reverse the clusters of lymphoid cells via cleansing of the inflammation-inducing agent [38].

The present study demonstrated the novel ability of simvastatin and pioglitazone to reduce plasma and tissue inflammation simultaneously. This finding may represent one mechanism that these drugs protect the cardiovascular system against hypercholesterolemia and hyperglycemia.

These observations extend our understanding of the actions of therapeutic interventions that might interfere

with EAT and potentially contribute to the control mechanisms involved in the pathogenesis of coronary atherosclerosis and decrease the cardiovascular risk.

Study limitations

The sample size was small, but it was sufficient for the proposed objective. The results do not allow us to establish firm conclusions about drug efficacy because this was a non-randomized trial without pre- and post-treatment data. However, this analysis was not the main objective of the study. Rather, we were primarily interested in the correlations of plasma/tissue actions. We found significant positive correlations between plasma and EAT effects of simvastatin, pioglitazone and their combination.

Conclusions

Pioglitazone, simvastatin or combination treatment in CAD and MS patients substantially reduced epicardial adipose tissue and plasma inflammatory markers. These tissue effects may contribute to the control of coronary atherosclerosis progression and may be inferred from plasmatic findings.

Competing interests

The authors declare that they have no competing interests.

Authors' contributions

AFG – performed essentially all the experiments, data analysis and writer of the study. SFO – contributed to the design and to study planning. DF – contributed to design of the study and performed statistical analysis. MLH – intellectual contribution to study planning; immunohistochemical staining analysis were performed in her laboratory. LAOD – contributed to the obtain adipose tissue samples during surgery elective bypass grafting. PLL – Head of the research group, mentor and writer of the study. All authors read and approved the final manuscript.

Acknowledgements

This study was supported by Fundação de Amparo à Pesquisa do Estado de São Paulo (FAPESP).

Received: 16 January 2014 Accepted: 25 March 2014

Published: 31 March 2014

References

1. Kershaw EE, Flier JS: **Adipose tissue as an endocrine organ.** *J Clin Endocrinol Metab* 2004, **89**:2548–2556.
2. Moreno PR, Murcia AM, Palacios IF, Leon MN, Bernardi VH, Fuster V, Fallon JT: **Coronary composition and macrophage infiltration in atherectomy specimens from patients with diabetes mellitus.** *Circulation* 2000, **102**:2180–2184.
3. Shoelson SE, Lee J, Goldfine AB: **Inflammation and insulin resistance.** *J Clin Invest* 2006, **116**:1793–1801.
4. Haffner SM: **The metabolic syndrome: inflammation, diabetes mellitus and cardiovascular disease.** *J Am Coll Cardiol* 2006, **97**:3A–11A.
5. Mazurek T, Zhang L, Zalewski A, Mannion JD, Diehl JT, Arafat H, Sarov-Blat L, O'Brien S, Keiper EA, Johnson AG, Martin J, Goldstein BJ, Shi Y: **Human epicardial adipose tissue is a source of inflammatory mediators.** *Circulation* 2003, **108**:2460–2466.
6. Baker AR, Silva NF, Quinn DW, Harte AL, Pagano D, Bonser RS, Kumar S, McTernan PG: **Human epicardial adipose tissue expresses a pathogenic profile of adipocytokines in patients with cardiovascular disease.** *Cardiovasc Diabetol* 2006, **5**:1–7.

7. Permana PA, Menge C, Reaven PD: **Macrophage-secreted factors induce adipocyte inflammation and insulin resistance.** *Biochem Biophys Res Commun* 2006, **341**:507–514.
8. Hirata Y, Kurobe H, Akaike M, Chikugo F, Hori T, Bando Y, Nishio C, Higashida M, Nakaya Y, Kitagawa T, Sata M: **Enhanced inflammation in epicardial fat in patients with coronary artery disease.** *Int Heart J* 2011, **52**:139–142.
9. Hug C, Lodish HF: **The role of the adipocyte hormone adiponectin in cardiovascular disease.** *Curr Opin Pharmacol* 2005, **5**:129–134.
10. Iacobellis G, Pistilli D, Gucciardo M, Leonetti F, Miraldi F, Brancaccio G, Gallo P, di Gioia CR: **Adiponectin expression in human epicardial adipose tissue in vivo is lower in patients with coronary artery disease.** *Cytokine* 2005, **29**:251–255.
11. Zhou A, Murillo H, Peng Q: **Impact of partial volume effects on visceral adipose tissue quantification using MRI.** *J Magn Reson Imaging* 2011, **34**:1452–1457.
12. Montani JP, Carroll JF, Dwyer TM, Antic V, Yang Z, Dulloo AG: **Ectopic fat storage in heart, blood vessels and kidneys in the pathogenesis of cardiovascular diseases.** *Int J Obes Relat Metab Disord* 2004, **28**:S58–S65.
13. Iacobellis G, Assaël F, Ribaudo MC, Zappaterreno A, Alessi G, Di Mario U, Leonetti F: **Epicardial fat from echocardiography: a new method for visceral adipose tissue prediction.** *Obes Res* 2003, **11**:304–310.
14. Iacobellis G, Ribaudo MC, Assaël F, Vecci E, Tiberti C, Zappaterreno A, Di Mario U, Leonetti F: **Echocardiographic epicardial adipose tissue is related to anthropometric and clinical parameters of metabolic syndrome: a new indicator of cardiovascular risk.** *J Clin Endocrinol Metab* 2003, **88**:5163–5168.
15. Luz PL, Nishiyama M, Chagas AC: **Drugs and lifestyle for the treatment and prevention of coronary artery disease – comparative analysis of the scientific basis.** *Braz J Med Biol Res* 2011, **44**:973–991.
16. Miyazaki Y, Mahankali A, Wajsbach E, Bajaj M, Mandarin LJ, DeFronzo RA: **Effect of pioglitazone on circulating adipocytokine levels and insulin sensitivity in type 2 diabetic patients.** *J Clin Endocrinol Metab* 2004, **89**:4312–4319.
17. Khan M, Murray FT, Karunaratne M, Perez A: **Pioglitazone and reductions in post-challenge glucose levels in patients with type 2 diabetes.** *Diabetes Obes Metab* 2006, **8**:31–38.
18. Permana PA, Zhang W, Wabitsch M, Fischer-Posovszky P, Duckworth WC, Reaven PD: **Pioglitazone reduces inflammatory responses of human adipocytes to factors secreted by monocytes/macrophages.** *Am J Physiol Endocrinol Metab* 2009, **296**:E1076–E1084.
19. Grundy SM, Cleeman JI, Merz CN, Brewer HB Jr, Clark LT, Hunninghake DB, Pasternak RC, Smith SC Jr, Stone NJ, National Heart, Lung, and Blood Institute; American College of Cardiology Foundation; American Heart Association: **Implications of recent clinical trials for the National Cholesterol Education Program Adult Treatment Panel III guidelines.** *Circulation* 2004, **110**:227–239.
20. Hanley AJ, Karter AJ, Williams K, Festa A, D'Agostino RB Jr, Wagenknecht LE, Haffner SM: **Prediction of type 2 diabetes mellitus with alternative definitions of the metabolic syndrome: the insulin resistance atherosclerosis study.** *Circulation* 2005, **112**:3713–3721.
21. Jialal I, Stein D, Balis D, Grundy SM, Adams-Huet B, Devaraj S: **Effect of hydroxymethyl glutaryl coenzyme a reductase inhibitor therapy on high sensitive C-reactive protein levels.** *Circulation* 2001, **103**:1933–1935.
22. Hanefeld M, Marx N, Pfützner A, Baurecht W, Lübben G, Karagiannis E, Stier U, Forst T: **Anti-inflammatory effects of pioglitazone and/or simvastatin in high cardiovascular risk patients with elevated high sensitivity c-reactive protein: the PIOSTAT study.** *J Am Coll Cardiol* 2007, **49**:290–297.
23. Forst T, Karagiannis E, Lübben G, Hohberg C, Schöndorf T, Dikta G, Drexler M, Morcos M, Dänschel W, Borchert M, Pfützner A: **Pleiotropic and anti-inflammatory effects of pioglitazone precede the metabolic activity in type 2 diabetic patients with coronary artery disease.** *Atherosclerosis* 2008, **197**:311–317.
24. Pfützner A, Marx N, Lübben G, Langenfeld M, Walcher D, Konrad T, Forst T: **Improvement of cardiovascular risk markers by pioglitazone is independent from glycemic control: results from the pioneer study.** *J Am Coll Cardiol* 2005, **45**:1925–1931.
25. Walcher D, Marx N: **Insulin resistance and cardiovascular disease: the role of PPARγ activators beyond their anti-diabetic action.** *Diab Vasc Dis Res* 2004, **1**:76–81.
26. Suganami T, Ogawa Y: **Adipose tissue macrophages: their role in adipose tissue remodeling.** *J Leukoc Biol* 2010, **88**:33–39.
27. Sacks HS, Fain JN, Cheema P, Bahouth SW, Garrett E, Wolf RY, Wolford D, Samaha J: **Inflammatory genes in epicardial fat contiguous with coronary atherosclerosis in the metabolic syndrome and type 2 diabetes: changes associated with pioglitazone.** *Diabetes Care* 2011, **34**:730–733.
28. Phillips SA, Ciaraldi TP, Oh DK, Savu MK, Henry RR: **Adiponectin secretion and response to pioglitazone is depot dependent in cultured human adipose tissue.** *Am J Physiol Endocrinol Metab* 2008, **295**:E842–E850.
29. Fain JN, Cowan GS Jr, Buffington C, Andersen RN, Pouncey L, Bahouth SW: **Regulation of leptin release by troglitazone in human adipose tissue.** *Metabolism* 2000, **49**:1485–1490.
30. Rasouli N, Yao-Borengasser A, Miles LM, Elbein SC, Kern PA: **Increase plasma adiponectin in response to pioglitazone does not result from increased gene expression.** *Am J Physiol Endocrinol Metab* 2006, **290**:E42–E46.
31. Iacobellis G, Corradi D, Sharma AM: **Epicardial adipose tissue: anatomic, biomolecular and clinical relationships with the heart.** *Nature* 2005, **2**:536–543.
32. Ouchi N, Kihara S, Funahashi T, Nakamura T, Nishida M, Kumada M, Okamoto Y, Ohashi K, Nagaretani H, Kishida K, Nishizawa H, Maeda N, Kobayashi H, Hiraoka H, Matsuzawa Y: **Reciprocal association of C-reactive protein with adiponectin in blood stream and adipose tissue.** *Circulation* 2003, **107**:671–674.
33. Teixeira-Fernandez E, Eiras S, Shamagian LG: **Epicardial adipose tissue adiponectin in patients with metabolic syndrome.** *Cytokine* 2011, **54**:185–190.
34. Iacobellis G, di Gioia CR, Costeta D, Petramala L, Travaglini C, De Santis V, Vitale D, Tritapepe L, Letizia C: **Epicardial adipose tissue adiponectin expression is related to intracoronary adiponectin levels.** *Horm Metab Res* 2009, **41**(3):227–231.
35. Iacobellis G, Costeta D, Petramala L, De Santis V, Vitale D, Tritapepe L, Letizia C: **Intracoronary adiponectin levels rapidly and significantly increase after coronary revascularization.** *Int J Cardiol* 2010, **144**(1):160–163.
36. Meier D, Bornmann C, Chappaz S, Schmutz S, Otten LA, Ceredig R, Acha-Orbea H, Finke D: **Ectopic lymphoid-organ development occurs through interleukin 7-mediated enhanced survival of lymphoid-tissue-inducer cells.** *Immunity* 2007, **26**:643–654.
37. Lötzer K, Döpping S, Connert S, Gräbner R, Spanbroek R, Lemser B, Beer M, Hildner M, Hehlgans T, van der Wall M, Mebius RE, Lovas A, Randolph GJ, Weih F, Habenicht AJ: **Mouse aorta smooth muscle cells differentiate into lymphoid tissue organizer-like cells on combined tumor necrosis factor receptor-1/lymphotoxin beta-receptor NF-kappaB signaling.** *Arterioscler Thromb Vasc Biol* 2010, **30**:395–402.
38. Drayton DL, Liao S, Mounzer RH, Ruddle NH: **Lymphoid organ development: from ontogeny to neogenesis.** *Nat Immunol* 2006, **7**:344–353.

doi:10.1186/1758-5996-6-47

Cite this article as: Grosso et al.: Synergistic anti-inflammatory effect: simvastatin and pioglitazone reduce inflammatory markers of plasma and epicardial adipose tissue of coronary patients with metabolic syndrome. *Diabetology & Metabolic Syndrome* 2014 **6**:47.

Submit your next manuscript to BioMed Central and take full advantage of:

- Convenient online submission
- Thorough peer review
- No space constraints or color figure charges
- Immediate publication on acceptance
- Inclusion in PubMed, CAS, Scopus and Google Scholar
- Research which is freely available for redistribution

Submit your manuscript at
www.biomedcentral.com/submit

