



# The Role of Estrogen Signaling in a Mouse Model of Inflammatory Bowel Disease: A *Helicobacter Hepaticus* Model

Lydia C. Cook<sup>1</sup>\*, Andrew E. Hillhouse<sup>1,2,3,9</sup>, Matthew H. Myles<sup>1,3</sup>, Dennis B. Lubahn<sup>4</sup>, Elizabeth C. Bryda<sup>1</sup>, J. Wade Davis<sup>5</sup>, Craig L. Franklin<sup>1\*</sup>

**1** Department of Veterinary Pathobiology, University of Missouri, Columbia, Missouri, United States of America, **2** Department of Molecular Microbiology & Immunology, University of Missouri, Columbia, Missouri, United States of America, **3** IDEXX Laboratories, Columbia, Missouri, United States of America, **4** Department of Biochemistry, University of Missouri, Columbia, Missouri, United States of America, **5** Departments of Health Management and Informatics, and Statistics, University of Missouri, Columbia, Missouri, United States of America

## Abstract

The pathogenesis of inflammatory bowel diseases (IBD), Crohn's disease and ulcerative colitis, is due in part to interactions between the immune system, genetics, the environment, and endogenous microbiota. Gonadal sex hormones (GSH), such as estrogen, are thought to be involved in the development of IBD as variations in disease severity occur during pregnancy, menopause, or oral contraceptives use. In certain strains of mice, infection with *Helicobacter hepaticus* triggers IBD-like mucosal inflammation that is more severe in female mice than in males, suggesting a role for GSH in this model. To determine the role of estrogen signaling in microbiota-induced intestinal inflammation, estrogen receptor (ER)  $\alpha$  and  $\beta$  knock-out (KO) mice, ER agonists, and adoptive transfers were utilized. We demonstrate that, when signaling is limited to ER $\beta$  on a non-CD4<sup>+</sup> cell subset, disease is less severe and this correlates with decreased expression of pro-inflammatory mediators.

**Citation:** Cook LC, Hillhouse AE, Myles MH, Lubahn DB, Bryda EC, et al. (2014) The Role of Estrogen Signaling in a Mouse Model of Inflammatory Bowel Disease: A *Helicobacter Hepaticus* Model. PLoS ONE 9(4): e94209. doi:10.1371/journal.pone.0094209

**Editor:** Fabio Cominelli, CWRU/UH Digestive Health Institute, United States of America

**Received:** July 22, 2013; **Accepted:** March 13, 2014; **Published:** April 7, 2014

**Copyright:** © 2014 Cook et al. This is an open-access article distributed under the terms of the Creative Commons Attribution License, which permits unrestricted use, distribution, and reproduction in any medium, provided the original author and source are credited.

**Funding:** This research was supported by funding from the National Institutes of Health (grant K26 RR018811) and the JE Wagner Endowment (University of Missouri). The funders had no role in study design, data collection and analysis, decision to publish, or preparation of the manuscript.

**Competing Interests:** The authors have declared that no competing interests exist.

\* E-mail: franklinc@missouri.edu

<sup>9</sup> These authors contributed equally to this work.

<sup>‡</sup> Current address: Department of Molecular and Cellular Medicine, Texas A&M Health Science Center, College Station, Texas, United States of America

## Introduction

Crohn's disease (CD) and ulcerative colitis (UC) are classified as inflammatory bowel diseases (IBDs) and are diagnosed primarily in North America and northern Europe [1]. There are approximately one million people in the U.S. living with IBDs [2], and while the cause is unknown, differences in intestinal microbiota, hygiene, genetics, geography, and the environment can contribute to disease development [1]. There is no known cure for IBDs and current treatments are predominantly pharmaceutical, merely suppressing clinical symptoms. When pharmaceutical intervention fails, the final option for treatment is bowel resection.

ER $\alpha$  and ER $\beta$  modulate gene expression by directly interacting with estrogen response elements or other transcription factors [3], and have been implicated in the modulation of several immune-mediated diseases [4]. For example, physiologic events that result in elevated estrogen levels are associated with increased disease severity in systemic lupus erythematosus (SLE) patients, but decreased disease severity in rheumatoid arthritis (RA) and multiple sclerosis (MS) patients [5–7]. Furthermore, there are distinct sex biases in colon cancer [8] and inflammatory intestinal disorders such as microscopic colitides [9,10], suggesting a role for gonadal sex hormones (GSHs), including estrogen, in the

modulation of intestinal health. GSH-related events, such as menopause, pregnancy and the use of oral contraceptives can modulate IBD. In particular, the development of IBD has been associated with oral contraceptive use [11,12] and the cessation of oral contraceptive use has been associated with the resolution of clinical signs and symptoms [13,14]. Furthermore, women are partially protected from disease flare-ups during pregnancy [15] and estrogen-based hormone replacement therapies are associated with decreases in disease severity in post-menopausal patients [16].

Animal models of IBD also support the use of estrogen therapies to modulate disease. For example, in an IBD model utilizing the HLA-B27 transgenic rat, estrogen administration decreases diarrhea and intestinal inflammation [17]. Further work with this model has demonstrated decreased disease severity when NF- $\kappa$ B signaling is inhibited by ERB-041, a selective ER $\beta$  antagonist [18–20]. Furthermore, estrogen administration decreases disease in other IBD models such as dinitrobenzene sulfonic acid (DNB)-induced and acetic acid-induced colitides [21,22]. Finally, estrogen signaling has also been shown to protect against the development of colitis-associated diseases, such as neoplasia, in the azoxymethane/dextrane sodium sulfate (DSS)-induced colorectal cancer model [23].

In the *Helicobacter hepaticus*-induced model of IBD, susceptible mouse strains, such as A/J, develop histologically observable disease in the cecum three months post-inoculation [24]. While the exact mechanism by which *H. hepaticus* initiates disease is unknown, it is believed that *H. hepaticus* colonizes the cecum and serves as a provocateur for an inflammatory response against endogenous microbiota [25–28]. *H. hepaticus*-induced typhlitis is characterized by lymphocytic infiltration of the lamina propria and increased expression of the T<sub>H</sub>1 cytokine genes IL-12/23 p40 and IFN- $\gamma$ , as well as TNF- $\alpha$  and the chemokines CXCL9 and CXCL10 [24,29–31]. *H. hepaticus*-infected female A/J mice develop more severe intestinal inflammation and have significantly higher T<sub>H</sub>1 cytokine gene expression than infected males [29]. These data and the previously reported associations between estrogen and IBD led to the hypothesis that estrogen signaling modulates the development of *H. hepaticus*-induced inflammation. To test this hypothesis, *H. hepaticus*-infected ER $\alpha$ - and ER $\beta$ -knockout mice and mice treated with ER specific agonists were used. Additionally, an adoptive transfer model was used to identify the cell type through which estrogen-mediated events occur.

## Materials and Methods

### Ethics Statement

This study was conducted in accordance with the *Guide for the Care and Use of Laboratory Animals* and approved by the University of Missouri Animal Care and Use Committee [ACUC Protocol Number: 7749]. All surgical procedures were performed under isoflurane anesthesia and all mice received post-operative buprenorphine for analgesia.

### Generation of estrogen receptor (ER) and RAG2 deficient A/J Mice

Wild type A/JCr mice were obtained from Frederick National Laboratory for Cancer Research. B6;129-*Esr1*<sup>tmUNC</sup> (ER $\alpha$  knockout) [32] and B6;129-*Esr2*<sup>tmUNC</sup> (ER $\beta$  knockout) [33] mice were kindly provided by Dr. Dennis Lubahn of the University of Missouri. A marker-assisted congenic breeding scheme was used to transfer the ER mutations to the A/J mouse strain. Resulting strains (A.129(P2)-*Esr1*<sup>tmKsk</sup>/*Mmmh* and A.129P2(B6)-*Esr2*<sup>tmUNC</sup>/*Mmmh*) strain were subsequently submitted to the Mutant Mouse Regional Resource Center (MMRRC 029880 and 029908 respectively). C57BL/6 mice containing a disruption in the *Rag2* (recombination activating gene 2) gene were obtained from Taconic laboratories (B6.129S6-*Rag2*<sup>tm1Fwa</sup>). Again, a marker-assisted congenic breeding scheme was used to generate *Rag2*-deficient mice on an A/JCr background (A.129S6(B6)-*Rag2*<sup>tm1Fwa</sup>). The generation of mice with mutations in both *Rag2* and either ER $\alpha$  or ER $\beta$  was accomplished by crossing the A.129S6(B6)-*Rag2*<sup>tm1Fwa</sup> strain with either A.129(P2)-*Esr1*<sup>tmKsk</sup>/*Mmmh* or A.129P2(B6)-*Esr2*<sup>tmUNC</sup>/*Mmmh* mice.

### ER alpha, ER beta, and RAG2 PCR

All knock-out mice used in experiments or as donors for adoptive transfers were genotyped at 3–4 weeks of age. At this time, all mice were ear-tagged (National Band & Tag, Newport, KY) and 3–5 millimeter tail snips were collected for genotyping. DNA was extracted using a Qiagen DNeasy DNA extraction kit (Valencia, CA) per manufacturer's protocol. The resulting DNA was used in PCR reactions to determine each individual mouse's genotype. Each reaction contained 0.2  $\mu$ l FastStart *Taq* (5 U/ $\mu$ l) (Roche, Indianapolis, IN), 0.3  $\mu$ l of each 25  $\mu$ M primer (IDT Coralville, IA), 3.2  $\mu$ l of 1.25 mM dNTPs (Roche) and 2  $\mu$ l 10 $\times$  PCR buffer with MgCl<sub>2</sub> (Roche). Thermal cycling conditions

were: 1 cycle at 94°C for 4 min, 45 cycles of 15 at 94°C, 45 sec at the appropriate annealing temperature (Table 1), 1 min at 72°C and 1 cycle at 72°C for 10 min. PCR reactions were analyzed by gel electrophoresis with 3% 1 $\times$  TBE agarose gels and amplicons were visualized with ethidium bromide (Bio-rad Hercules, CA). Primer sequences and annealing temperatures are listed in Table 1.

### Bacterial Culture

Culture of *Helicobacter hepaticus* strain MU-94 was previously described [24,29]. Mice were inoculated via gastric gavage with 0.5 ml of culture containing approximately 5 $\times$ 10<sup>8</sup> bacteria/mL. Colonization was confirmed 2–4 weeks post-inoculation and at necropsy with *H. hepaticus*-specific PCR of feces [34].

### Ovariectomy and Pellet Placement

Mice were anesthetized with isoflurane, clipped dorsally, and aseptically scrubbed. A single longitudinal skin incision was made on the dorsal midline. The ovaries were visualized, the muscle wall was incised, and ovaries were removed. After a continuous-release hormone pellet (described below) was inserted rostrally into the subcutaneous space between the scapulae through the initial incision, the incision was closed with sterile skin staples. Mice were given 0.0015 mg buprenorphine IP for analgesia and recovered on a heating pad. Seven to ten days post-operatively, the skin staples were removed. At the time of necropsy, mice with detectable ovarian remnants were removed from the study.

### Compounds

In initial studies, a 90-day continuous-release hormone pellet containing 1.5 mg/pellet of 17 $\beta$ -estradiol (E2) or a placebo (Innovative Research of America, Sarasota, FL) was administered. The secondary studies utilized 90-day continuous-release pellets containing either 2.5 mg of the ER $\alpha$  agonist, PPT (4,4',4''-(4-Propyl-[1H]-pyrazole-1,3,5-triyl) trisphenol), or 10 mg of the ER $\beta$  agonist, DPN (diarylpropionitrile 2,3-bis(4-hydroxyphenyl)-propionitrile) (Tocris Bioscience Ellisville, MO and Innovative Research of America). At the time of necropsy, the presence of a pellet was confirmed and mice without a visible, intact pellet were removed from the study.

### Isolation of CD4<sup>+</sup> Lymphocytes and Adoptive Transfers

CD4<sup>+</sup> T cells were isolated from the spleens of 8–12 week old donor mice. CD4<sup>+</sup> T cells were negatively selected using a CD4<sup>+</sup> T Cell Isolation Kit (Miltenyi Biotec, Auburn, CA), and purified with a Miltenyi Biotec autoMACS cell separator. Purity of the CD4<sup>+</sup> cells was accessed following isolation. This was accomplished by staining cells with a FITC-conjugated CD4 (eBioscience, San Diego, CA); following staining, cells were washed, suspended in an appropriate volume of staining buffer and analyzed with either a FACScan or FACSCalibur flow cytometer (BD Biosciences). All adoptively transferred cell populations were >83% pure for CD4+ expression (average purity = 88%). After isolation, cells were suspended in sterile PBS and 5 $\times$ 10<sup>5</sup> cells were injected into the tail vein of recipient mice. All mice were monitored for weight loss; loss of more than 20% of the starting body weight resulted in removal from the study.

### Necropsy

In all experiments, the cecum was removed and cecal contents collected to confirm *H. hepaticus* colonization by PCR. The cecum was then sectioned longitudinally into two equal parts. One half was rinsed with sterile PBS and flash frozen in liquid nitrogen for

**Table 1.** Genotyping PCR Primers, Products, & Annealing Temperatures.

PCR Primers	Forward (5'-3')	Reverse (5'-3')	Fragment size (bp)	Annealing Temp (°C)
ER $\alpha$ WT	TCTACGGCCAGTCGGGCATC	TAGGCGACACGCTGTTGAGCTG	102	66
ER $\beta$ WT	TGACAATGGCTGTGTTCTCTGCTC	TTAAAGTTAAACGCCAGCCACCG	566	66
neo cassette	5'-TGCCTGCTCTTACTGAAGGCTCT-3'		$\alpha$ - 363 $\beta$ - 430	66
RAG2 WT	GGGAGGACACTCACTTGCCAGTA	AGTCAGAGTCTCCATCTCACTGA	263	62
neo cassette	5'-CGGCCGGAGAACCTGCGTGCAA-3'		350	62

doi:10.1371/journal.pone.0094209.t001

use in mRNA expression analyses. The other half was fixed in zinc fixative and embedded in paraffin for histologic evaluation.

### Histological Evaluation

Cecal histologic sections were stained with hematoxylin and eosin (H&E) stain and scored for inflammatory lesions using a previously described protocol [29,31,35]. In short, a longitudinal cecal section from the ileocecal junction to the cecal tip was scored in a blinded fashion. The cecum as a whole was assigned a category score for each of the following: inflammation intensity (0 = none, 1 = mild, 2 = moderate, 3 = severe); longitudinal extent of inflammation (0 = none, 1 = 1–2 small foci, 2 = patchy, 3 = diffuse); vertical extent of inflammation (0 = none, 1 = basal mucosal inflammation, 2 = full thickness mucosal inflammation, 3 = transmural inflammation); and hyperplasia (0 = none, 1 = focal, 2 = patchy hyperplasia, 3 = diffuse hyperplasia). The lesions scores depicted in figures are the sum of the four category scores; any lesions score greater than 2 were decreased by 2 to minimize inflation of scores by inflammation alone, which is described by three of the four categories evaluated. Lesion scores in both the knockout and agonist treatment studies were found to have a bimodal distribution with a score of 6 being at the center of this distribution. As a result, differences in severe disease (scores greater than or equal to 6) incidence between test groups and control groups were also examined.

### RNA Isolation and Reverse Transcription

Frozen cecal sections were thawed in TRIzol (Invitrogen, Carlsbad, CA) and homogenized using a TissueLyser (Qiagen, Valencia, CA). Total RNA was isolated per manufacturer's (Invitrogen) instructions. Five micrograms of total RNA was

reverse-transcribed using the Super Script II kit (Invitrogen, Carlsbad, CA) utilizing the manufacturer's oligo(dT) primer protocol. The resultant cDNA was diluted to a final concentration of 20 ng/ $\mu$ L.

### Real-Time PCR

Real-time quantitative PCR was performed either with a Roche Light Cycler 2.0 or a Qiagen Rotor-Gene Q using Qiagen Quantitect SYBR Green (Qiagen, Valencia, CA). The run conditions used for real-time PCR have been previously described [24] and primers can be found in Table 2.

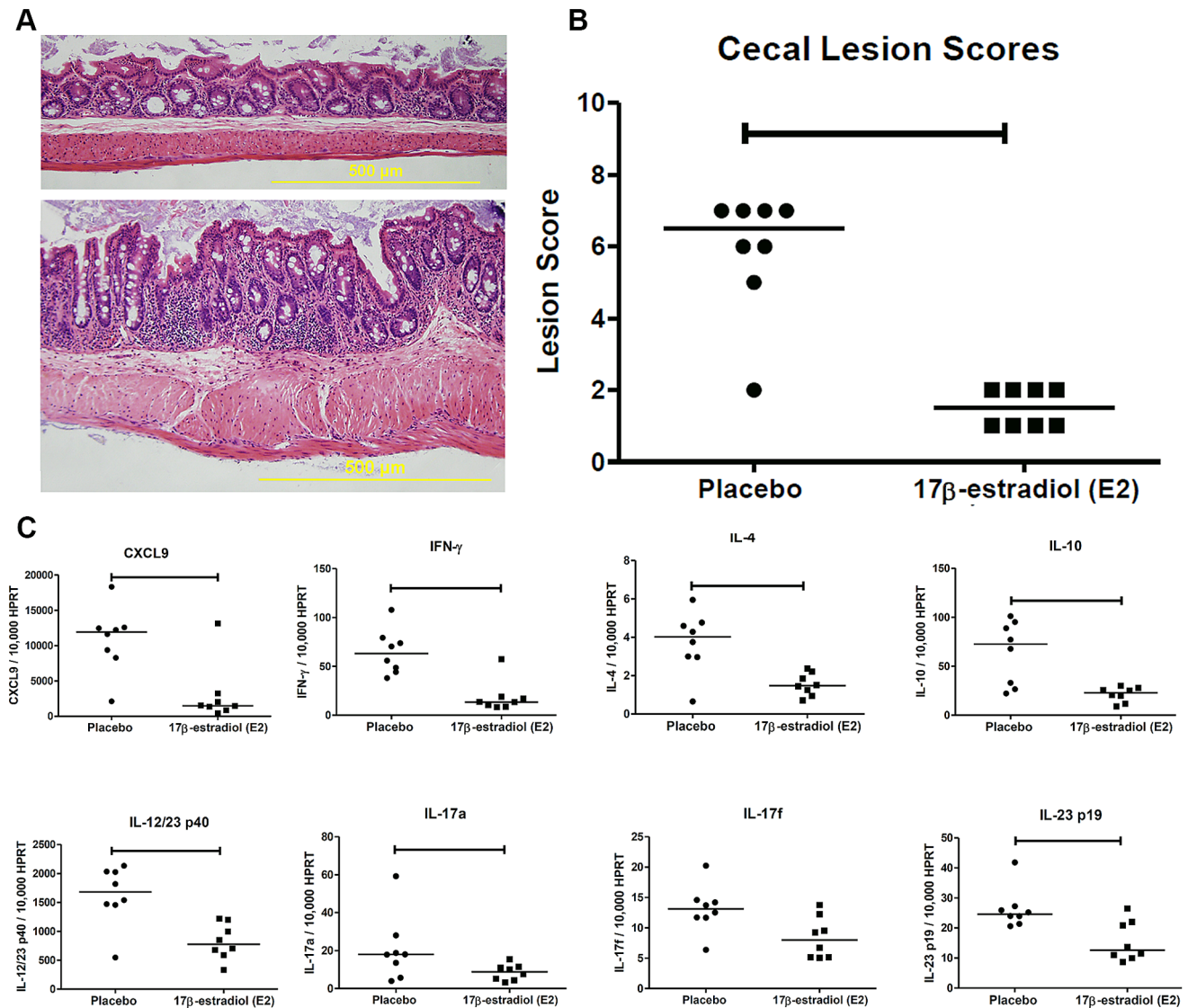
### Statistical Analysis

One-way ANOVAs with Student Newman-Keuls post-hoc tests were used for analysis of lesion scores that passed ( $p < 0.05$ ) a goodness-of-fit test for normality (Shapiro-Wilk) performed using SigmaPlot 11.0 (Systat Software Inc., San Jose, CA). For lesions scores that were not normally distributed, either the exact Wilcoxon-Mann-Whitney test (two groups) or exact Kruskal-Wallis test (three or more groups) was performed using SAS 9.3 (SAS, Cary, NC), followed by Dunn's post-hoc multiple comparisons [36]. Because evaluation of mRNA expression data showed that most of measures departed from normality, either the exact Wilcoxon-Mann-Whitney test (two groups) or exact Kruskal-Wallis test (three or more groups) was performed using SAS 9.3 (SAS, Cary, NC), followed by Dunn's post-hoc multiple comparisons. The reported  $p$ -value for the post-hoc tests are after adjustment, so that comparing  $p$  to  $\alpha = 0.05$  still preserves the family-wise error rate at 5%. Exact Chi-squared tests of independence were performed to evaluate differences in severe disease incidence. Correlations between cytokine mRNA expression and disease severity were evaluated with Spearman's

**Table 2.** Real time PCR Primers and Annealing Temperatures.

PCR Primers	Forward (5'-3')	Reverse (5'-3')	Annealing Temp (°C)
HPRT	GTAATGATCAGTCAACGGGGGAC	CCAGCAAGCTTGCAACCTTAACCA	60
CXCL9	ACTCGGCAATGTGAAGAAG	CCCATTAAAGATTCAGGGTGC	58
IFN- $\gamma$	GCCATCAGCAACAACATAAGC	TGGGACAATCTCTCCCCAC	58
IL-4	ATGGGTCTCAACCCCCAGCTAGT	GCTCTTAGGCTTCCAGGAAGTC	57
IL-10	CGGGAAGACAATAACTG	CATTCCGATAAGGCTTGG	58
IL-12/23 p40	ACTCACATCTGCTGCCAC	GGGAACTGCTACTGCTCTTGA	60
IL-17a	CAGAAGGCCCTCAGACTACC	CTTCCCTCCGATTGACAC	56.6
IL-17f	ACTTGCCATTCTGAGGGAGG	TGATGCAGCCTGAGTGCTCTG	57.1
IL-23 p19	CCAGCGGGACATATGAATCTAC	GATGTCAGAGTCAAGCAGGTG	55.3

doi:10.1371/journal.pone.0094209.t002



**Figure 1. Estrogen treatment decreases disease severity and the expression of pro-inflammatory cytokines and chemokines.** (A) Representative histologic images of ceca from ovariectomized A/J mice sacrificed 90 days after *Helicobacter hepaticus* inoculation and implantation with a subcutaneous pellet containing either (top) 17β-estradiol (1.5 mg/pellet) or (bottom) placebo. (B) Cecal lesion scores of placebo (circles) and estradiol (squares) treated mice (n = 8, 8 respectively). Each point represents the lesion score for an individual mouse. Lesion score data analyzed with an exact Wilcoxon-Mann-Whitney test; horizontal lines represent medians. (C) Real-time quantitative PCR measurements of cecal cytokine and chemokine mRNA expression levels in mice receiving placebo (circle) or estrogen (square) treatment (n = 8). mRNA expression was normalized to the expression of the housekeeping gene HPRT. All mRNA expression data with an exact Wilcoxon Rank Sum Test; each point represents the expression level for an individual mouse and horizontal lines represent medians. For all data analysis  $p \leq 0.05$  considered significant and indicated by horizontal capped bars.

doi:10.1371/journal.pone.0094209.g001

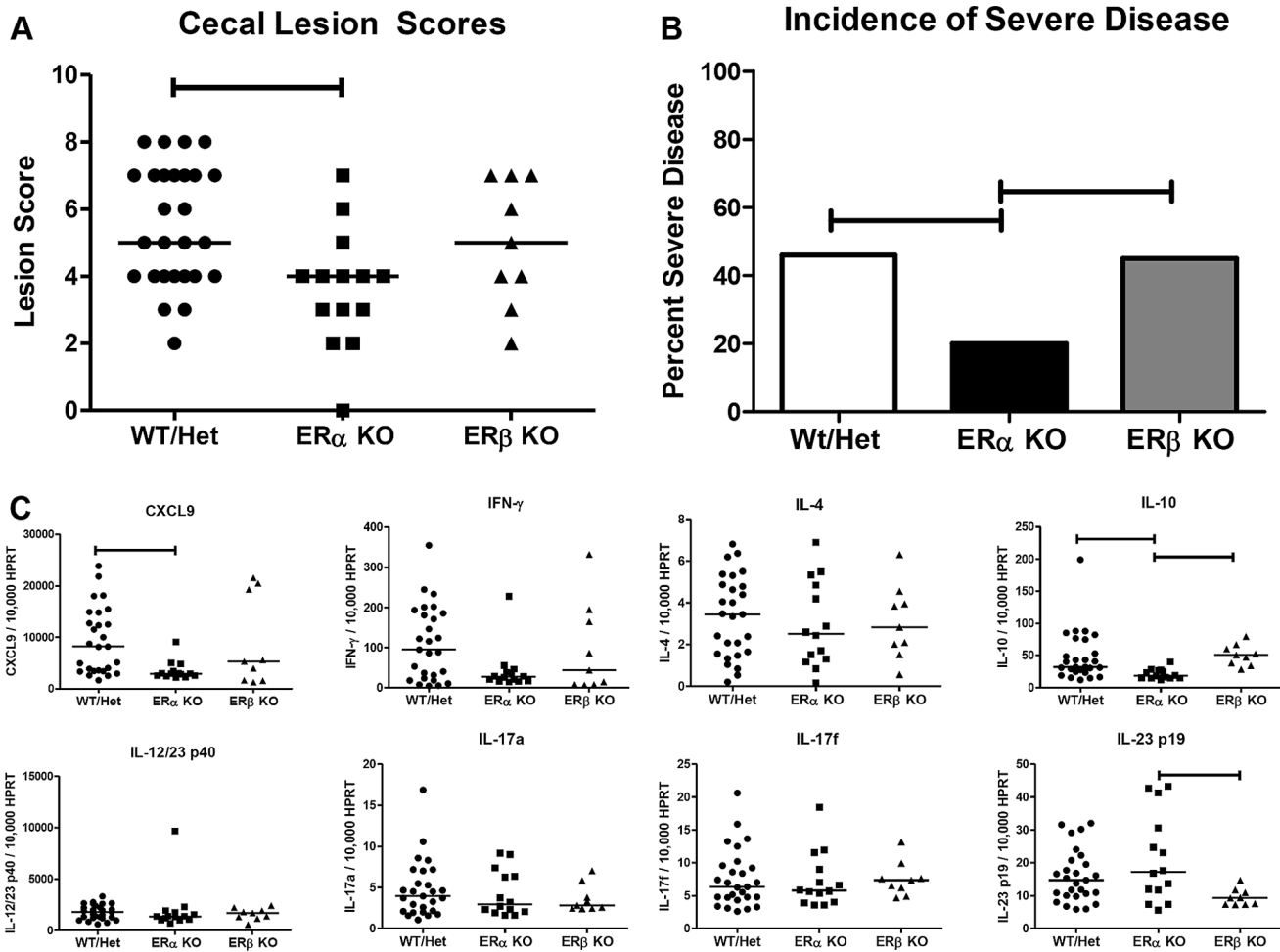
correlation coefficients and corresponding p-values were adjusted by a false discovery rate (FDR) controlling method, due the large number of correlations tested. For all analyses, p-values  $\leq .05$  (after any adjustments) were regarded as significant. For experiments involving analysis of knockout mice, preliminary studies did not detect any differences between mean lesion scores of wild type,  $ER\alpha^{+/-}$ , and  $ER\beta^{+/-}$  mice (mean  $p = .61$ , minimum  $p > .35$ ). These groups were therefore combined as controls. All graphs and dot plots were generated using GraphPad Prism 5.0 software (GraphPad Prism Software Inc., La Jolla, CA).

## Results

### Estrogen administration decreases disease severity

To evaluate the role of estrogen, female mice were ovariectomized at 3–4 weeks of age and implanted with either a placebo (control) or continuous-release hormone pellet (1.5 mg - supra-physiologic dose of 17β-estradiol, E2). All mice were orally inoculated with *H. hepaticus* one week post-operatively. Ninety days post-inoculation, mice were sacrificed and ceca collected for the evaluation of histologic disease and mRNA expression.

The ceca of E2-treated mice had little to no inflammatory infiltrates (Fig. 1A,top), while the placebo-treated mice had an



**Figure 2. Absence of ER $\alpha$  expression decreases disease severity and mRNA expression of CXCL9 and IL-10.** A/J female mice deficient for either ER $\alpha$  or ER $\beta$  expression and heterozygous/wild type littermate controls were inoculated with *H. hepaticus* and evaluated 3 months post-inoculation. (A) Cecal lesion scores of inoculated ER $\alpha$  (squares), ER $\beta$  (triangles) and control (circles) mice (n = 14, 9, and 27 respectively); each point represents the lesion score for an individual mouse. Lesion score data analyzed with an exact Kruskal-Wallis test followed by Dunn's post-hoc comparisons. Horizontal bars represent medians. (B) Frequency of mice with severe cecal inflammation (lesion score  $\geq 6$ ) within each genotype group. Data analyzed by exact Chi-squared test of independence. (C) Real-time quantitative PCR measurements of cecal cytokine and chemokine mRNA expression levels in mice deficient for ER $\alpha$  (squares) or ER $\beta$  (triangles) and littermate controls (circles). The mRNA expression of all cytokines were normalized to HPRT. Data analyzed with an exact Kruskal-Wallis test followed by Dunn's post-hoc comparisons; each point represents the expression level for an individual mouse and horizontal lines represent medians. For all data analysis  $p \leq 0.05$  considered significant and indicated by horizontal capped bars.

doi:10.1371/journal.pone.0094209.g002

increase in cellular infiltration and hyperplasia/dysplasia of the cecal mucosa (Fig. 1A, bottom). Evaluation of cecal histologic sections revealed that E2-treated mice had significantly lower lesion scores than those that received the placebo treatment (Fig. 1B).

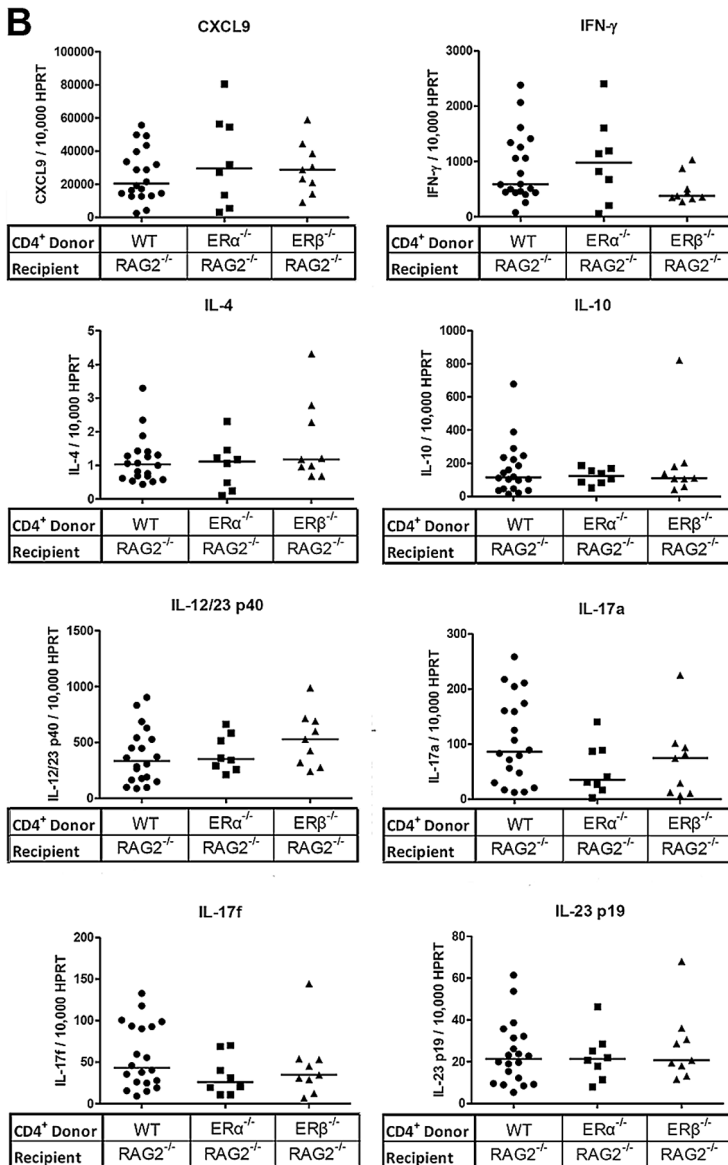
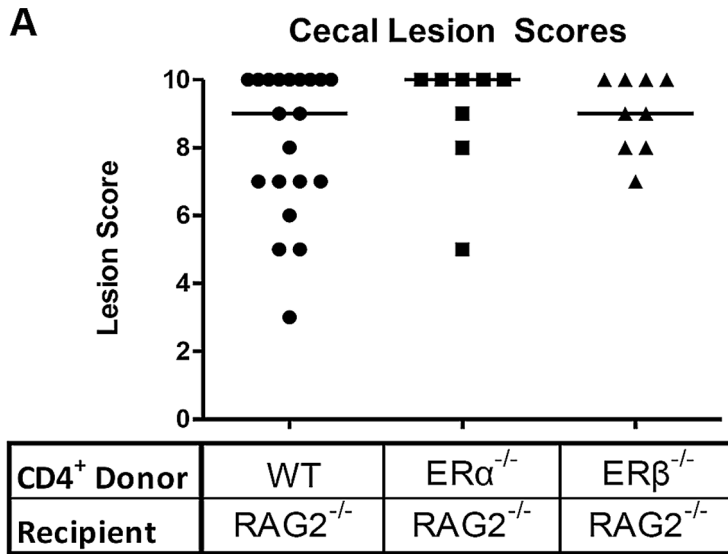
We previously demonstrated that mRNA expression of IL-12/23 p40, IFN- $\gamma$  and CXCL9 is elevated during *H. hepaticus*-induced intestinal inflammation [24]. Estrogen treatment significantly reduced the cecal expression of all three inflammatory mediators compared to placebo-treated mice (Fig. 1C). To evaluate the effect of estrogen treatment on other branches of the immune system expression levels of: IL-10, IL-4, IL-17a, IL-17f and IL-23 p19 were evaluated. All but IL-17f were significantly decreased with estrogen treatment. When the relationship between disease severity and cytokine expression was evaluated, positive correlations were found for CXCL9, IL-12/23 p40, IFN- $\gamma$  and IL-10 (Table S1). The overall decrease in inflammation and inflammatory gene

expression suggests that estrogen treatment is capable of reducing disease severity.

#### Disease severity decreases when estrogen signaling is limited to ER $\beta$

While estrogen administration was shown to decrease disease, this finding is not physiologically or therapeutically relevant as this treatment resulted in severe bone marrow depression (data not shown) and marked decreases in expression of all cytokines measured. However, these studies served as observation generating studies that stimulated the pursuit of additional studies centered on estrogen receptor signaling. To determine the role of the two estrogen receptors, ER $\alpha$  and ER $\beta$ , in modulating disease, female ER $\alpha$ <sup>-/-</sup> and ER $\beta$ <sup>-/-</sup> mice were inoculated with *H. hepaticus* at 3–4 weeks of age. To serve as controls, female heterozygotes (ER $\alpha$ <sup>+/-</sup> or ER $\beta$ <sup>+/-</sup>) and wild-type littermates were inoculated. As no statically significant differences were found





**Figure 4. Lack of ER signaling in CD4<sup>+</sup> cellular populations does not alter cecal inflammation or cytokine and chemokine expression.** (A) Cecal lesion scores in female *H. hepaticus*-inoculated *RAG2*<sup>-/-</sup> mice adoptively transferred *ERα*<sup>-/-</sup> (squares) or *ERβ*<sup>-/-</sup> (triangles) CD4<sup>+</sup> lymphocytes (n=8, 9 respectively). As a control group, *RAG2*<sup>-/-</sup> female mice were adoptively transferred wild type CD4<sup>+</sup> lymphocytes (n=20)(circles). Points represent the lesion scores of individual mice in each experimental group and horizontal bars indicate median lesion scores; horizontal lines represent medians. (B) Real-time quantitative PCR measurements of cecal cytokine and chemokine mRNA expression levels in *RAG2*<sup>-/-</sup> mice adoptively transferred CD4<sup>+</sup> lymphocytes deficient for ERα or ERβ expression. The mRNA expression levels of all cytokines were normalized to HPRT mRNA expression. Each point represents the normalized expression of an individual mouse (symbols the same as lesion score data). All data analyzed by an exact Kruskal-Wallis test and horizontal lines represent medians. For all data analysis p≤0.05 considered significant. doi:10.1371/journal.pone.0094209.g004

Histologic evaluation demonstrated that treatment with the ERβ agonist (DPN) was associated with significantly lower lesion scores compared to both the control and PTT treated mice (Fig. 3A), while treatment with the ERα agonist (PPT) did not alter intestinal inflammation compared to control mice. The incidence of severe disease (lesion score ≥6) in the group treated with DPN was also significantly less than both the control group and the PTT treated mice (Fig. 3B). Associated with this decreased disease severity were decreases in cecal expression of *IL-12/23 p40* and *IL-17a* as compared to placebo-treated controls. When DPN-treated mice were compared to the control and PPT-treated mouse groups there was also a trend towards decreased *IFN-γ* (p=0.108, 0.060 respectively) and *CXCL9* (p=0.100, 0.084 respectively) (Fig. 3C). Moreover, there were positive correlations between expression of *CXCL9* and *IFN-γ* and lesion scores (Table S3). Collectively, these results suggest that signaling through ERβ decreases disease severity and this decrease is associated with decreased expression of pro-inflammatory cytokines.

### Estrogen signaling on CD4<sup>+</sup> lymphocytes does not affect disease severity

Previous studies in our laboratory have demonstrated that *H. hepaticus* induces a T<sub>H</sub>1 inflammatory response, suggesting a role for CD4<sup>+</sup> T cells in disease development. To investigate the influence of estrogen signaling through ERα and ERβ on CD4<sup>+</sup> cell populations, CD4<sup>+</sup> cells with ablated ER expression were utilized in adoptive transfer experiments.

Splenic CD4<sup>+</sup> lymphocytes were isolated from mice deficient for either *ERα* or *ERβ* and adoptively transferred to *H. hepaticus*-inoculated *RAG2*<sup>-/-</sup> A/J mice. As a control, CD4<sup>+</sup> lymphocytes isolated from wild type A/J mice were adoptively transferred to *H. hepaticus*-inoculated *RAG2*<sup>-/-</sup> recipients. Ninety days after adoptive transfers, all mice were sacrificed and ceca collected. Histologic evaluation revealed no significant differences in lesion scores between mice that received CD4<sup>+</sup> lymphocytes from wild type, *ERα*-deficient, or *ERβ*-deficient donors (Fig. 4A). Analysis of the cecal expression of *CXCL9*, *IFN-γ*, *IL-4*, *IL-10*, *IL-12/23 p40*, *IL-17a*, *IL-17f* and *IL-23 p19* revealed no significant differences between the experimental and control mice (Fig. 4B), implying that estrogen signaling on a CD4<sup>+</sup> cell population is not responsible for the alterations in either mRNA cytokine expression or disease development demonstrated in the prior experiments. Furthermore, there were no significant correlations between lesion scores and cytokine expression (Table S4).

### Estrogen signaling on non-CD4<sup>+</sup> lymphocytes suppresses disease severity

As the adoptive transfer of CD4<sup>+</sup> cells with ablated ER expression did not result in modulation of disease, it was logical to speculate that estrogen signaling on a non-CD4<sup>+</sup> cell population is responsible for the previously described disease modulation. To assess the role of ERα and ERβ on non-CD4<sup>+</sup> lymphocyte cell populations, CD4<sup>+</sup> lymphocytes from wild type donors were adoptive transferred into *H. hepaticus*-inoculated mice dually

deficient for RAG2 and either ERα or ERβ expression. For a control group, wild type CD4<sup>+</sup> lymphocytes were transferred into *H. hepaticus*-inoculated *RAG2*<sup>-/-</sup> mice with functional ERα and ERβ.

Adoptive transfer of CD4<sup>+</sup> lymphocytes into mice lacking ERα resulted in significant decreases in disease severity (Fig. 5A). Associated with this decrease in disease severity were significant decreases in expression of *IFN-γ* and IL-23 p19. Moreover, expression of *IFN-γ*, *IL-23 p19* and *CXCL9*, expression showed positive correlations with lesion scores (Table S5). The reduction in disease development and associated cytokine gene expression changes in mice lacking ERα signaling on their non-CD4<sup>+</sup> cells provides further support that estrogen signaling through ERβ can modulate mucosal inflammation.

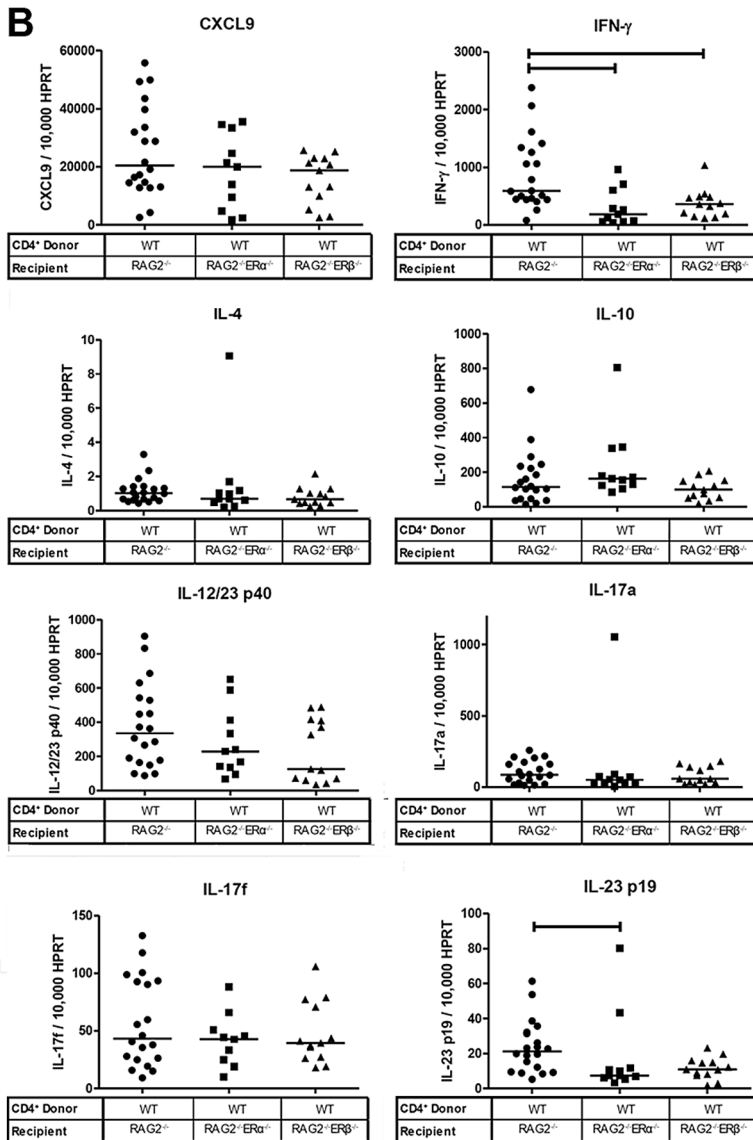
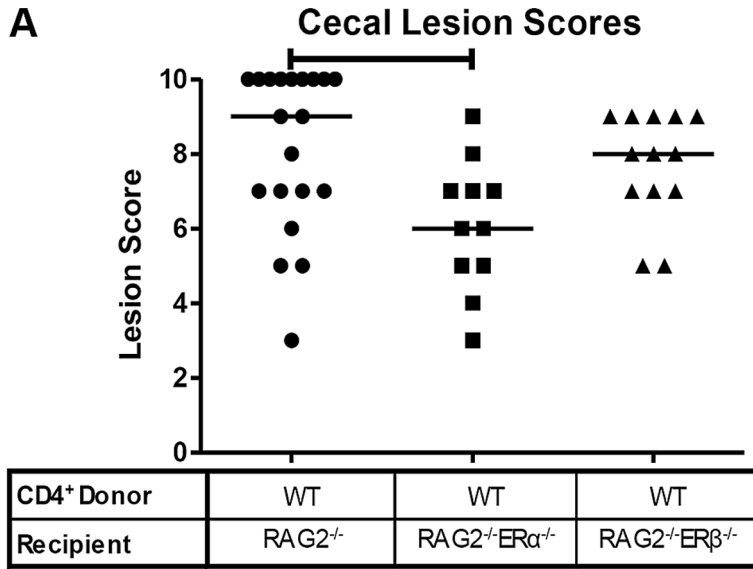
## Discussion

The regulation of autoimmune diseases by GSHs is complex and multifaceted. There are many theories as to why women are more likely to develop an autoimmune disease. Many of these recognize the influence of GSHs; additionally most acknowledge that females, due to their evolutionary role to bear offspring, have an immune system programmed to accept exposure to allogeneic antigens, such as a developing fetus during pregnancy [5,6]. Many diseases, such as MS, RA and SLE, demonstrate a female sex bias [4,7]. In SLE, elevations in estrogen are associated with increased disease severity, while in MS and RA, increases in estrogen levels, such as occurs during pregnancy, have been shown to decrease disease severity [7,37]. Additionally, animal models of MS [38–40] and RA [41] have recapitulated the beneficial effects of estrogen therapies.

The mucosal immune system of the gastrointestinal track also appears to be highly influenced by estrogen signaling. A female sex bias is seen in Crohn's disease, a subset of IBD [42], although it is small relative to the sex-bias of many other autoimmune-related diseases [4]. Furthermore, there is evidence that estrogen can modulate disease severity in IBD patients [15,16,43] and in animal models of IBD [17–20]. The influence of gonadal sex hormones is also apparent in our model as female *H. hepaticus*-infected A/J mice develop more severe intestinal inflammation than their male counterparts [29]. Additionally, there is a greater increase in the expression of inflammatory T<sub>H</sub>1 cytokines and chemokines in *H. hepaticus*-infected female mice, relative to male mice [29]. In light of these observations, we sought to investigate the effects of estrogen signaling on disease development and the associated cytokine responses.

In other animal models of autoimmune diseases such as experimental autoimmune encephalomyelitis (EAE), collagen-induced arthritis and DNB-induced colitis, high doses of estrogen effectively decrease disease severity [17,21,22]. Our findings that administration of a supraphysiologic estrogen dose decreases disease severity are consistent with these reports. This decrease in disease was associated with decreases in several cytokines including T<sub>H</sub>1-associated cytokines that typify *H. hepaticus* infection in A/J mice [24,29]. However, this treatment also resulted in severe bone





**Figure 5. ER $\beta$  signaling on non-CD4<sup>+</sup> cellular populations reduces cecal inflammation and IFN- $\gamma$  expression.** (A) Cecal lesion scores in female *H. hepaticus*-inoculated ER $\alpha$ <sup>-/-</sup>RAG2<sup>-/-</sup> (squares) or ER $\beta$ <sup>-/-</sup>RAG2<sup>-/-</sup> (triangles) female mice adoptively transferred wild type CD4<sup>+</sup> lymphocytes (n=11, 13 respectively). As a control group (circles), RAG<sup>-/-</sup> female mice were adoptively transferred wild type CD4<sup>+</sup> lymphocytes (n=20). Points represent the lesion scores of individual mice in each experimental group and horizontal lines represent median lesion scores. Lesion score data analyzed with an exact Kruskal-Wallis test followed by Dunn's post-hoc comparisons. (B) Real-time quantitative PCR measurements of cecal cytokine and chemokine mRNA expression levels in RAG2<sup>-/-</sup> mice deficient for either ER $\alpha$  or ER $\beta$  and adoptively transferred wild type CD4<sup>+</sup> lymphocytes. All cytokine mRNA expression levels were normalized to *HPRT* expression. Data analyzed by an exact Kruskal-Wallis test followed by Dunn's post-hoc comparisons; each point represents the normalized expression of an individual mouse and horizontal lines represent medians. For all data analysis p $\leq$ 0.05 considered significant and indicated by horizontal capped bars.  
doi:10.1371/journal.pone.0094209.g005

marrow depression and decreases in all but one of the cytokines evaluated, suggesting that this treatment was neither physiologically nor therapeutically relevant to understanding how estrogen can modulate mucosal inflammation. Nonetheless, these studies served as observation generating studies that stimulated the pursuit of additional studies centered on estrogen receptor signaling.

As both ER $\alpha$  and ER $\beta$  have been previously documented to be expressed on various cell types within the cecum [44–47], we sought to assess the role of specific ERs. To accomplish this, mice lacking either ER $\alpha$  or ER $\beta$  were inoculated with *H. hepaticus*. *H. hepaticus* infected mice with only functional ER $\beta$  signaling had decreased severity of disease that was associated with decreased *CXCL9* expression. Additionally there was a positive correlation between the expression of *CXCL9* and lesion scores. Interestingly, despite a lack of significant changes in the mRNA expression of *IL-12/23 p40* and *IFN- $\gamma$* , positive correlations were identified between both of these cytokines and lesion scores (Figure S2). From these results, it was reasonable to hypothesize that either 1) signaling through ER $\alpha$  is pro-inflammatory and removal of this signaling dampens disease or 2) preferential signaling through the remaining functional receptor in these mice, ER $\beta$ , results in dampening of disease.

We subsequently demonstrated decreases in both disease severity and cytokine gene expression when mice were treated with the ER $\beta$  agonist DPN. Other studies have also suggested a role for ER $\beta$  in modulating intestinal inflammation [11], in particular the publication by Looijer-van Langen et al. that demonstrates decreased ER $\beta$  expression in both human IBD patients, and in rodent models of IBD, including the IL-10<sup>-/-</sup> mouse and the HLA-B27 rat [44]. The recent work by Saleiro et al. has further highlighted the protective properties of intestinal ER $\beta$  signaling by demonstrating the ability of ER $\beta$  signaling to inhibit the development of colitis-associated cancers in mice [23].

The finding that loss of ER $\alpha$ , which results in preferential signaling through ER $\beta$ , decreased disease severity, coupled with the finding that an ER $\beta$  agonist also decreased disease severity, suggests that signaling through ER $\beta$  abrogates the immune response and ultimately prevents development of inflammation. Interestingly, estrogen availability differed between these two groups (the ER knock-out mice had only endogenous estrogen signaling while the agonist treated mice were ovariectomized and supplemented with only one specific agonist), but both studies led to a similar conclusion that signaling through ER $\beta$  decreases disease severity. However, given these findings, we expected that ER $\beta$ -deficient mice would have increased disease severity, but this was not the case. The reasons for this are unknown, but we speculate that this model's maximum disease severity may have been reached and that neither depletion of ER $\beta$  nor endogenous estrogen signaling through ER $\alpha$  alone was sufficient to further exacerbate disease beyond this plateaued level.

Further experiments were performed to identify the cell types in which estrogen receptor signaling was modulating disease severity in this model. Previously published findings have shown intestinal epithelial cells express ER $\beta$  [8,45] and CD4<sup>+</sup> T cells express ER $\alpha$

[47] making it necessary to evaluate the involvement of both CD4<sup>+</sup> and non-CD4<sup>+</sup> cellular populations in disease modulation. To identify the cell type through which ER signaling modulates disease, an adoptive transfer model was utilized. When estrogen signaling on CD4<sup>+</sup> T cells was ablated, no differences in histologic disease or mRNA expression were observed; additionally, no correlations between disease severity and mRNA expression were found (Table S4). However, when non-CD4<sup>+</sup> cellular populations lacked ER $\alpha$  signaling, disease severity was decreased and *IFN- $\gamma$*  and *IL-23 p19* expressions were lowered. Interestingly, there were also positive correlations between lesion scores and expression of *CXCL9*, *IFN- $\gamma$*  and *IL-23 p19* (Table S5). Overall, these results suggest that the development of *H. hepaticus*-induced inflammation is independent of estrogen signaling on CD4<sup>+</sup> T cells, and is dependent on estrogen signaling in a non-CD4<sup>+</sup> cellular population.

Candidate non-CD4<sup>+</sup> cells that express ER $\beta$  included epithelial cells and dendritic cells. Signaling through epithelial cell ER $\beta$  increases the development of tight junctions in the intestinal epithelium and decreases intestinal permeability [44–46], possibly resulting in decreased sampling of the luminal bacteria. Furthermore, treatment of colonic cells in culture with either 17 $\beta$  Estradiol or DPN, the ER $\beta$  agonist used in this study, results in increased epithelial resistance [44]. Increased epithelial resistance could decrease the ability of bacterial antigens to stimulate the immune system and could explain the decreased disease and associated expression of *IL-12/23 p40* and *IL-17a* seen in the ER $\beta$  agonist (DPN)-treated mice. Alternatively, as estrogen has been shown to influence the development and function of dendritic cells [48–50], ER $\beta$  signaling may be altering antigen presentation to the overall immune system, ultimately resulting in decreased disease development.

Two findings from these studies remain unexplained. First, our finding that signaling through specific estrogen receptors (e.g. ER $\beta$ ) is associated with decreased disease is contradictory to the observation that, when inoculated with *H. hepaticus*, female mice develop more severe disease than males. The reasons for this paradox are unknown but likely involve complex interactions between other gonadal sex hormones such as progesterone in females and testosterone in males. Second, we also found unexplained perturbations in expression of some cytokines in mice given and ER $\alpha$  agonist or deficient in ER $\beta$  signaling. Because these were not associated with changes in disease severity, they were not pursued further and remain unexplained.

Collectively these studies, suggest that when estrogen signals solely through ER $\beta$  in a non-CD4<sup>+</sup> cell population, an immunosuppressive effect occurs. This is supported by data from three distinct models: knock-out mice, ER agonist-treated mice, and an adoptive transfer model, all of which demonstrated decreased histologic disease and associated cytokine perturbations when estrogen signaling is limited to or supplemented with ER $\beta$  signaling. Moreover, this research is directly translatable to development of novel ER $\beta$ -targeting

therapeutics that modulate mucosal inflammation in diseases such as IBD.

## Supporting Information

**Table S1 Spearman Correlation Coefficients for disease severity and cytokine mRNA expression in mice treated with estrogen.** Spearman's correlation coefficients were utilized to evaluate correlations between cytokine mRNA expression and disease severity in ovariectomized A/J mice sacrificed 90 days after *Helicobacter hepaticus* inoculation and implantation with either a subcutaneous pellet containing either 17 $\beta$ -estradiol (1.5 mg/pellet) or placebo. Corresponding p-values were adjusted by a false discovery rate (FDR) controlling method. For all analyses, p-values  $\leq .05$  (after any adjustments) were regarded as significant and indicated by bold font. (DOCX)

**Table S2 Spearman Correlation Coefficients for disease severity and cytokine mRNA expression in mice with altered ER signaling.** Spearman's correlation coefficients were utilized to evaluate correlations between cytokine mRNA expression and disease severity in ovariectomized ER $\alpha^{-/-}$ , ER $\beta^{-/-}$ , and heterozygous/wild type female A/J mice inoculated with *H. hepaticus* and necropsied 3 months post-inoculation. Corresponding p-values were adjusted by a false discovery rate (FDR) controlling method. For all analyses, p-values  $\leq .05$  (after any adjustments) were regarded as significant and indicated by bold font. (DOCX)

**Table S3 Spearman Correlation Coefficients for disease severity and cytokine mRNA expression in mice treated with ER agonist or placebo pellets.** Spearman's correlation coefficients were utilized to evaluate correlations between cytokine mRNA expression and disease severity in ovariectomized, female A/J mice administered a continuous-release pellet (placebo, ER $\alpha$  agonist (PPT) or ER $\beta$  agonist (DPN)), inoculated with *H. hepaticus* and necropsied three months post-inoculation. Corresponding p-values were adjusted by a false discovery rate (FDR) controlling method. For all analyses, p-values

$\leq .05$  (after any adjustments) were regarded as significant and indicated by bold font. (DOCX)

**Table S4 Spearman Correlation Coefficients for disease severity and cytokine mRNA expression in mice with altered ER signaling on CD4<sup>+</sup> cell populations.** Correlations between cytokine mRNA expression and disease severity in *H. hepaticus*-inoculated RAG2 $^{-/-}$  mice adoptively transferred ER $\alpha^{-/-}$ , ER $\beta^{-/-}$ , or wild type CD4<sup>+</sup> lymphocytes were evaluated with Spearman's correlation coefficients. Corresponding p-values were adjusted by a false discovery rate (FDR) controlling method. For all analyses, p-values  $\leq .05$  (after any adjustments) were regarded as significant. No significant correlations were found. (DOCX)

**Table S5 Spearman Correlation Coefficients for disease severity and cytokine mRNA expression in mice with altered ER signaling on non-CD4<sup>+</sup> cell populations.** Correlations between cytokine mRNA expression and disease severity in *H. hepaticus*-inoculated ER $\alpha^{-/-}$ RAG2 $^{-/-}$ , ER $\beta^{-/-}$ RAG2 $^{-/-}$  or RAG2 $^{-/-}$  mice adoptively wild type CD4<sup>+</sup> lymphocytes were evaluated with Spearman's correlation coefficients. Corresponding p-values were adjusted by a false discovery rate (FDR) controlling method. For all analyses, p-values  $\leq .05$  (after any adjustments) were regarded as significant and indicated by bold font. (DOCX)

## Acknowledgments

The authors would like to extend special thanks to all those that have aided and supported our research, in particular: Beth Livingston, Donald Connor and Linsey Krafve.

## Author Contributions

Conceived and designed the experiments: LCC AEH MHM DBL ECB CLF. Performed the experiments: LCC AEH MHM CLF. Analyzed the data: LCC AEH JWD CLF. Contributed reagents/materials/analysis tools: MHM DBL ECB JWD CLF. Wrote the paper: LCC AEH.

## References

- Xavier RJ, Podolsky DK (2007) Unravelling the pathogenesis of inflammatory bowel disease. *Nature* 448: 427–434.
- Bousvaros A, Sylvester F, Kugathasan S, Szigethy E, Fiocchi C, et al. (2006) Challenges in pediatric inflammatory bowel disease. *Inflamm Bowel Dis* 12: 885–913.
- Kuiper GG, Carlsson B, Grandien K, Enmark E, Haggblad J, et al. (1997) Comparison of the ligand binding specificity and transcript tissue distribution of estrogen receptors alpha and beta. *Endocrinology* 138: 863–870.
- Whitacre CC (2001) Sex differences in autoimmune disease. *Nat Immunol* 2: 777–780.
- McCarthy M (2000) The “gender gap” in autoimmune disease. *Lancet* 356: 1088.
- Gleicher N, Barad DH (2007) Gender as risk factor for autoimmune diseases. *J Autoimmun* 28: 1–6.
- Beagley KW, Gockel CM (2003) Regulation of innate and adaptive immunity by the female sex hormones oestradiol and progesterone. *FEMS Immunol Med Microbiol* 38: 13–22.
- Campbell-Thompson M, Lynch JJ, Bhardwaj B (2001) Expression of estrogen receptor (ER) subtypes and ERbeta isoforms in colon cancer. *Cancer Res* 61: 632–640.
- Williams JJ, Kaplan GG, Makhija S, Urbanski SJ, Dupre M, et al. (2008) Microscopic colitis-defining incidence rates and risk factors: a population-based study. *Clin Gastroenterol Hepatol* 6: 35–40.
- Kao KT, Pedraza BA, McClune AC, Rios DA, Mao YQ, et al. (2009) Microscopic colitis: a large retrospective analysis from a health maintenance organization experience. *World J Gastroenterol* 15: 3122–3127.
- Godet PG, May GR, Sutherland LR (1995) Meta-analysis of the role of oral contraceptive agents in inflammatory bowel disease. *Gut* 37: 668–673.
- Khalili H, Higuchi LM, Ananthakrishnan AN, Richter JM, Feskanich D, et al. (2012) Oral contraceptives, reproductive factors and risk of inflammatory bowel disease. *Gut*.
- Cornish JA, Tan E, Simillis C, Clark SK, Teare J, et al. (2008) The risk of oral contraceptives in the etiology of inflammatory bowel disease: a meta-analysis. *Am J Gastroenterol* 103: 2394–2400.
- Villafruela Cives M (2009) Re: “The risk of oral contraceptives in the etiology of inflammatory bowel disease: a meta-analysis”. Response to Cornish, et al. *Am J Gastroenterol* 104: 534–535.
- Riis L, Vind I, Politi P, Wolters F, Vermeire S, et al. (2006) Does pregnancy change the disease course? A study in a European cohort of patients with inflammatory bowel disease. *Am J Gastroenterol* 101: 1539–1545.
- Kane SV, Reddy D (2008) Hormonal replacement therapy after menopause is protective of disease activity in women with inflammatory bowel disease. *Am J Gastroenterol* 103: 1193–1196.
- Harnish DC, Albert LM, Leathurby Y, Eckert AM, Ciarletta A, et al. (2004) Beneficial effects of estrogen treatment in the HLA-B27 transgenic rat model of inflammatory bowel disease. *Am J Physiol Gastrointest Liver Physiol* 286: G118–125.
- Harris HA, Albert LM, Leathurby Y, Malamas MS, Mewshaw RE, et al. (2003) Evaluation of an estrogen receptor-beta agonist in animal models of human disease. *Endocrinology* 144: 4241–4249.
- Chadwick CC, Chippari S, Matelan E, Borges-Marcucci L, Eckert AM, et al. (2005) Identification of pathway-selective estrogen receptor ligands that inhibit NF-kappaB transcriptional activity. *Proc Natl Acad Sci U S A* 102: 2543–2548.
- Mewshaw RE, Edsall RJ, Jr., Yang C, Manas ES, Xu ZB, et al. (2005) ERbeta ligands. 3. Exploiting two binding orientations of the 2-phenylanthralene scaffold to achieve ERbeta selectivity. *J Med Chem* 48: 3953–3979.

21. Verdu EF, Deng Y, Bercik P, Collins SM (2002) Modulatory effects of estrogen in two murine models of experimental colitis. *Am J Physiol Gastrointest Liver Physiol* 283: G27–36.
22. Gunal O, Oktar BK, Ozcinar E, Sungur M, Arbak S, et al. (2003) Estradiol treatment ameliorates acetic acid-induced gastric and colonic injuries in rats. *Inflammation* 27: 351–359.
23. Saleiro D, Murillo G, Benya RV, Bissonnette M, Hart J, et al. (2012) Estrogen receptor-beta protects against colitis-associated neoplasia in mice. *Int J Cancer* 131: 2553–2561.
24. Myles MH, Dieckgraefe BK, Criley JM, Franklin CL (2007) Characterization of cecal gene expression in a differentially susceptible mouse model of bacterial-induced inflammatory bowel disease. *Inflamm Bowel Dis* 13: 822–836.
25. Maggio-Price L, Bielefeldt-Ohmann H, Treuting P, Iritani BM, Zeng W, et al. (2005) Dual infection with *Helicobacter bilis* and *Helicobacter hepaticus* in p-glycoprotein-deficient *mdr1a*<sup>-/-</sup> mice results in colitis that progresses to dysplasia. *Am J Pathol* 166: 1793–1806.
26. Maggio-Price L, Shows D, Waggle K, Burich A, Zeng W, et al. (2002) *Helicobacter bilis* infection accelerates and *H. hepaticus* infection delays the development of colitis in multiple drug resistance-deficient (*mdr1a*<sup>-/-</sup>) mice. *American Journal of Pathology* 160: 739–751.
27. Maggio-Price L, Treuting P, Zeng W, Tsang M, Bielefeldt-Ohmann H, et al. (2006) *Helicobacter* infection is required for inflammation and colon cancer in SMAD3-deficient mice. *Cancer Res* 66: 828–838.
28. Cahill RJ, Foltz CJ, Fox JG, Dangler CA, Powrie F, et al. (1997) Inflammatory bowel disease: an immunity-mediated condition triggered by bacterial infection with *Helicobacter hepaticus*. *Infection & Immunity* 65: 3126–3131.
29. Livingston RS, Myles MH, Livingston BA, Criley JM, Franklin CL (2004) Sex influence on chronic intestinal inflammation in *Helicobacter hepaticus*-infected A/JCr mice. *Comp Med* 54: 301–308.
30. Whary MT, Morgan TJ, Dangler CA, Gaudes KJ, Taylor NS, et al. (1998) Chronic active hepatitis induced by *Helicobacter hepaticus* in the A/JCr mouse is associated with a Th1 cell-mediated immune response. *Infect Immun* 66: 3142–3148.
31. Myles MH, Livingston RS, Livingston BA, Criley JM, Franklin CL (2003) Analysis of gene expression in ceca of *Helicobacter hepaticus*-infected A/JCr mice before and after development of typhlitis. *Infect Immun* 71: 3885–3893.
32. Lubahn DB, Moyer JS, Golding TS, Couse JF, Korach KS, et al. (1993) Alteration of reproductive function but not prenatal sexual development after insertional disruption of the mouse estrogen receptor gene. *Proc Natl Acad Sci U S A* 90: 11162–11166.
33. Kregge JH, Hodgins JB, Couse JF, Enmark E, Warner M, et al. (1998) Generation and reproductive phenotypes of mice lacking estrogen receptor beta. *Proc Natl Acad Sci U S A* 95: 15677–15682.
34. Riley LK, Franklin CL, Hook RR, Jr., Besch-Williford C (1996) Identification of murine helicobacters by PCR and restriction enzyme analyses. *J Clin Microbiol* 34: 942–946.
35. Mohammadi M, Redline R, Nedrud J, Czinn S (1996) Role of the host in pathogenesis of *Helicobacter*-associated gastritis: *H. felis* infection of inbred and congenic mouse strains. *Infect Immun* 64: 238–245.
36. Dunn OJ (1964) Multiple comparisons using rank sums. *Technometrics* 6: 241–252.
37. Jansson L, Holmdahl R (1998) Estrogen-mediated immunosuppression in autoimmune diseases. *Inflamm Res* 47: 290–301.
38. Bebo BF, Jr., Fyfe-Johnson A, Adlard K, Beam AG, Vandenbark AA, et al. (2001) Low-dose estrogen therapy ameliorates experimental autoimmune encephalomyelitis in two different inbred mouse strains. *J Immunol* 166: 2080–2089.
39. Subramanian S, Matejuk A, Zamora A, Vandenbark AA, Offner H (2003) Oral feeding with ethinyl estradiol suppresses and treats experimental autoimmune encephalomyelitis in SJL mice and inhibits the recruitment of inflammatory cells into the central nervous system. *J Immunol* 170: 1548–1555.
40. Liu HY, Buenafe AC, Matejuk A, Ito A, Zamora A, et al. (2002) Estrogen inhibition of EAE involves effects on dendritic cell function. *J Neurosci Res* 70: 238–248.
41. Subramanian S, Tovey M, Afentoulis M, Krogstad A, Vandenbark AA, et al. (2005) Ethinyl estradiol treats collagen-induced arthritis in DBA/1JLaJ mice by inhibiting the production of TNF-alpha and IL-1beta. *Clin Immunol* 115: 162–172.
42. Brant SR, Nguyen GC (2008) Is there a gender difference in the prevalence of Crohn's disease or ulcerative colitis? *Inflamm Bowel Dis* 14 Suppl 2: S2–3.
43. Ferguson CB, Mahsud-Dornan S, Patterson RN (2008) Inflammatory bowel disease in pregnancy. *BMJ* 337: a427.
44. Looijer-van Langen M, Hotte N, Dieleman LA, Albert E, Mulder C, et al. (2011) Estrogen receptor-beta signaling modulates epithelial barrier function. *Am J Physiol Gastrointest Liver Physiol* 300: G621–626.
45. Wada-Hiraike O, Imamov O, Hiraike H, Hulthenby K, Schwend T, et al. (2006) Role of estrogen receptor beta in colonic epithelium. *Proc Natl Acad Sci U S A* 103: 2959–2964.
46. Wada-Hiraike O, Warner M, Gustafsson JA (2006) New developments in oestrogen signalling in colonic epithelium. *Biochem Soc Trans* 34: 1114–1116.
47. Phiel KL, Henderson RA, Adelman SJ, Elloso MM (2005) Differential estrogen receptor gene expression in human peripheral blood mononuclear cell populations. *Immunol Lett* 97: 107–113.
48. Mao A, Paharkova-Vatchkova V, Hardy J, Miller MM, Kovats S (2005) Estrogen selectively promotes the differentiation of dendritic cells with characteristics of Langerhans cells. *J Immunol* 175: 5146–5151.
49. Nalbandian G, Kovats S (2005) Understanding sex biases in immunity: effects of estrogen on the differentiation and function of antigen-presenting cells. *Immunol Res* 31: 91–106.
50. Siracusa MC, Overstreet MG, Housseau F, Scott AL, Klein SL (2008) 17beta-estradiol alters the activity of conventional and IFN-producing killer dendritic cells. *J Immunol* 180: 1423–1431.