



Published in final edited form as:

Arterioscler Thromb Vasc Biol. 2012 December ; 32(12): 2869–2876. doi:10.1161/ATVBAHA.112.254573.

Myeloid-Specific I κ B Kinase β Deficiency Decreases Atherosclerosis in Low-Density Lipoprotein Receptor–Deficient Mice

Se-Hyung Park

Graduate Center for Nutritional Sciences, University of Kentucky, Lexington, KY

Yipeng Sui

Graduate Center for Nutritional Sciences, University of Kentucky, Lexington, KY

Florence Gizard

Graduate Center for Nutritional Sciences, University of Kentucky, Lexington, KY

Jinxian Xu

Graduate Center for Nutritional Sciences, University of Kentucky, Lexington, KY

Jennifer Rios-Pilier

Graduate Center for Nutritional Sciences, University of Kentucky, Lexington, KY

Robert N. Helsley

Graduate Center for Nutritional Sciences, University of Kentucky, Lexington, KY

Seong-Su Han

Department of Pathology, University of Iowa Carver College of Medicine, Iowa City, IA

Changcheng Zhou

Graduate Center for Nutritional Sciences, University of Kentucky, Lexington, KY

Abstract

Objective—Inflammatory responses are the driving force of atherosclerosis development. I κ B kinase β (IKK β), a central coordinator in inflammation through regulation of nuclear factor- κ B, has been implicated in the pathogenesis of atherosclerosis. Macrophages play an essential role in the initiation and progression of atherosclerosis, yet the role of macrophage IKK β in atherosclerosis remains elusive and controversial. This study aims to investigate the impact of IKK β expression on macrophage functions and to assess the effect of myeloid-specific IKK β deletion on atherosclerosis development.

Methods and Results—To explore the issue of macrophage IKK β involvement of atherogenesis, we generated myeloid-specific IKK β -deficient low-density lipoprotein receptor–deficient mice (IKK $\beta^{\Delta Mye}$ LDLR $^{-/-}$). Deficiency of IKK β in myeloid cells did not affect plasma lipid levels but significantly decreased diet-induced atherosclerotic lesion areas in the aortic root, brachiocephalic artery, and aortic arch of low-density lipoprotein receptor–deficient mice. Ablation of myeloid IKK β attenuated macrophage inflammatory responses and decreased

© 2012 American Heart Association, Inc

Correspondence to Changcheng Zhou, PhD, Graduate Center for Nutritional Sciences, Cardiovascular Research Center, University of Kentucky, 900 S. Limestone St, 517 Wethington Bldg, Lexington, KY 40536. c.zhou@uky.edu.

This manuscript was sent to Philip S. Tsao, Consulting Editor, for review by expert referees, editorial decision, and final disposition.

Disclosures

None.

atherosclerotic lesional inflammation. Furthermore, deficiency of IKK β decreased adhesion, migration, and lipid uptake in macrophages.

Conclusion—The present study demonstrates a pivotal role for myeloid IKK β expression in atherosclerosis by modulating macrophage functions involved in atherogenesis. These results suggest that inhibiting nuclear factor- κ B activation in macrophages may represent a feasible approach to combat atherosclerosis.

Keywords

atherosclerosis; inflammation; I κ B kinase β ; macrophage; nuclear factor- κ B

Atherosclerosis is a chronic inflammatory disease.^{1,2} Many inflammatory pathways that contribute to the initiation and progression of atherosclerosis are regulated by the transcription factor nuclear factor (NF)- κ B, a master regulator of innate and adaptive immune responses.³⁻⁵ The NF- κ B family consists of 5 members: p65 (RelA), RelB, c-Rel, p100/p52, and p105/p50. NF- κ B normally remains in the cytoplasm bound to the inhibitory protein I κ B. Activating signals, such as proinflammatory cytokines, reactive oxygen species, and viral products, lead to activation of I κ B kinase (IKK), which then phosphorylates I κ B and promotes its degradation, allowing NF- κ B to translocate to the nucleus where NF- κ B can bind to the promoter regions of its target genes.^{3,5} IKK consists of 2 kinase subunits, IKK α and IKK β , and a regulatory subunit NF- κ B essential modulator or IKK γ .^{3,6} IKK β is the predominant catalytic subunit of the IKK complex, which is required for canonical activation of NF- κ B by inflammatory mediators.⁶

IKK β -mediated NF- κ B activation has been implicated in the pathogenesis of atherosclerosis. Activated NF- κ B has been identified in human atherosclerotic plaques and was enhanced in unstable coronary plaques.^{7,8} NF- κ B activation in human atherosclerosis was IKK β -dependent and resulted in selective upregulation of major proinflammatory and prothrombotic mediators.⁸ Mapping atherosclerosis modifier loci on the apolipoprotein E-deficient (ApoE^{-/-}) background had localized the negative regulator of NF- κ B, A20 to a locus conferring sensitivity to atherosclerosis in ApoE^{-/-} mice.⁹ Indeed, atherosclerosis was increased in A20 haploinsufficient and decreased in A20-overexpressing ApoE^{-/-} mice.¹⁰ In addition, inhibiting NF- κ B activity in endothelial cells (ECs) by the deletion of NF- κ B essential modulator or expression of dominant-negative I κ B α decreased vascular inflammation and atherosclerosis in ApoE^{-/-} mice.¹¹

Macrophages are the major inflammatory cells involved in the progression of atherosclerosis, yet the role of macrophage IKK β in atherosclerosis remains elusive and controversial. NF- κ B-mediated inflammatory functions by macrophages have generally been considered to be proatherogenic.^{2,4} Interestingly, Kanters et al¹² previously reported that low-density lipoprotein-deficient (LDLR^{-/-}) mice transplanted with IKK β -deficient macrophages had increased atherosclerosis. However, macrophage-specific inhibition of NF- κ B activation by overexpressing transdominant, nondegradable forms of I κ B α decreased foam cell formation,¹³ and myeloid-specific I κ B α deletion promoted atherogenesis in LDLR^{-/-} mice.¹⁴ Furthermore, LDLR^{-/-} mice with hematopoietic cells deficient in the NF- κ B subunit p50 also had decreased atherosclerotic lesion size.¹⁵ The inconsistent conclusions drawn from these studies suggest that further research is needed to define the role of macrophage IKK β /NF- κ B signaling in atherosclerosis.

To explore the issue of macrophage IKK β involvement of atherogenesis, we generated myeloid-specific IKK β -deficient LDLR^{-/-} mice (IKK $\beta^{\Delta Mye}$ LDLR^{-/-}). Here, we report that myeloid IKK β deficiency protected LDLR^{-/-} mice from diet-induced atherosclerosis, most likely because of modulated macrophage functions involved in atherogenesis.

Methods

Animals

Myeloid-specific IKK β knockout (IKK $\beta^{\Delta\text{Mye}}$) mice were generated by crossing mice carrying loxP-flanked IKK β alleles (IKK $\beta^{\text{F/F}}$) with LysM-Cre transgenic mice,¹⁶ as previously described.^{17,18} IKK $\beta^{\text{F/F}}$ mice were kindly provided by Dr Michael Karin at the University of California, San Diego. The mice used in this study were backcrossed at least 7 additional generations onto the C57BL/6 background (>98% C57BL/6) using the marker-assisted Microsatellite Genotyping technique. To increase susceptibility to atherosclerotic lesion development, the IKK $\beta^{\Delta\text{Mye}}$ mice were crossed to LDLR $^{-/-}$ mice (Jackson Laboratories) to generate IKK $\beta^{\Delta\text{Mye}}$ LDLR $^{-/-}$ and IKK $\beta^{\text{F/F}}$ LDLR $^{-/-}$ mice. All mice used in this study had IKK $\beta^{\text{F/F}}$ LDLR $^{-/-}$ double-mutant background, and IKK $\beta^{\Delta\text{Mye}}$ LDLR $^{-/-}$ mice carried heterozygous knock-in for LysM-Cre. For atherosclerosis study, 4-week-old experimental male IKK $\beta^{\text{F/F}}$ LDLR $^{-/-}$ and IKK $\beta^{\Delta\text{Mye}}$ LDLR $^{-/-}$ littermates were weaned and fed with a high-fat Western diet (21.2% fat, 0.2% cholesterol; TD 88137, Harlan Teklad) for 12 weeks until euthanization at 16 weeks of age. Body composition was measured by EchoMRI (Echo Medical System). All procedures were approved by the University of Kentucky Institutional Animal Care and Use Committee.

Blood Analysis

Plasma total cholesterol and triglyceride concentrations were determined enzymatically by a colorimetric method.¹⁹ Plasma from multiple mice (n=6) was pooled, and plasma lipoprotein cholesterol distributions were determined by fast-performance liquid chromatography.²⁰

Atherosclerotic Lesion Analysis

Optimal cutting temperature compound-embedded hearts or brachiocephalic arteries were sectioned and stained with Oil-red-O, and atherosclerotic lesions were quantified as previously described.¹⁹ Aortas were harvested and fixed with 10% formalin, and en face analysis was performed as previously described.²¹

Macrophage Isolation and Function Assays

Macrophages were isolated as previously described.^{20,22} Bone marrow-derived macrophages (BMMs) were isolated from the femurs of mice and cultured in DMEM medium supplemented with 10 ng/mL recombinant mouse macrophage colony-stimulating factor (Invitrogen) for 7 days before the experiment. Elicited peritoneal macrophages were harvested from each genotype by peritoneal lavage with PBS 3 days after intraperitoneal injection of 1 mL of 3% thioglycollate. For adhesion assay, calcein acetoxymethyl-labeled peritoneal macrophages were incubated with primary porcine ECs, and attached cells were fixed and counted.²³ Migration assays were performed using transwells with 8.0- μm pore polycarbonate membrane inserts (Corning).²² Macrophages were seeded on the transwell filters, and the lower chambers were filled with either control media or media containing 500 ng/mL lipopolysaccharide (LPS). After 5 hours, cells were removed from the upper surface of the insert by scraping using Q-Tips. The membranes were fixed with 1% glutaraldehyde (Sigma), stained with hematoxylin (Leica) and mounted on the slides using glycerol gelatin. Hematoxylin-stained cells were counted under the microscope. For lipid uptake assay, macrophages were incubated with DMEM containing 100 $\mu\text{g/mL}$ of oxidized LDL (Biomedical Technologies) for 24 hours, followed by washing with PBS and staining with Oil-red-O/hematoxylin.²⁰

RNA Isolation and Quantitative Real-Time PCR Analysis

Total RNA was isolated from mouse tissues or cells using TRIzol Reagent (Life Technologies), and quantitative real-time polymerase chain reaction (PCR) was performed using gene-specific primers and the SYBR green PCR kit (Life Technologies) as previously described.^{19,20} The primer sets used in this study are listed in Table I in the online-only Data Supplement.

Statistical Analysis

All data are expressed as mean±SD. Statistically significant differences between 2 groups were analyzed by 2-tailed Student *t* test for data normally distributed and by the Mann-Whitney test for data not normally distributed using Prism software. A *P* value <0.05 was considered significant.

Results

Generation of LDLR^{-/-} Mice With Myeloid-Specific IKKβ Deficiency

To investigate the role of macrophage IKKβ in atherosclerosis, we generated IKKβ^{ΔMye}LDLR^{-/-} mice by crossing IKKβ^{ΔMye} (LysM-Cre/IKKβ^{F/F}) mice¹⁷ with LDLR^{-/-} mice. All mice used in this study had IKKβ^{F/F}LDLR^{-/-} double-mutant background, and IKKβ^{ΔMye}LDLR^{-/-} mice also carried heterozygous knock-in for LysM-Cre. PCR analysis of genomic DNA indicates that the recombination was specific to the BMMs (Figure I in the online-only Data Supplement), consistent with previous reports that LysM-Cre-mediated gene excision almost exclusively occurs in macrophages and neutrophils.^{16,24} The mRNA levels of IKKβ were significantly decreased in peritoneal macrophages and BMMs but not in other major tissues of IKKβ^{ΔMye}LDLR^{-/-} mice compared with IKKβ^{F/F}LDLR^{-/-} mice (Figure 1A). Consistent with the quantitative real-time PCR results, protein levels IKKβ were also substantially reduced in both peritoneal macrophages and BMMs of IKKβ^{ΔMye}LDLR^{-/-} mice (Figure 1B). The protein levels of IKKα were not affected in macrophages of IKKβ^{ΔMye}LDLR^{-/-} mice, indicating the specific deletion of IKKβ (Figure 1B). To determine whether deficiency of IKKβ inhibits NF-κB activity in macrophages, BMMs isolated from IKKβ^{F/F}LDLR^{-/-} and IKKβ^{ΔMye}LDLR^{-/-} mice were treated with NF-κB stimulator, tumor necrosis factor-α (TNFα). TNFα-induced NF-κB subunit p65 translocation from cytoplasm to nucleus was inhibited in BMMs of IKKβ^{ΔMye}LDLR^{-/-} mice (Figure 1C). Electrophoretic mobility shift assay confirmed that TNFα-induced DNA binding activity of NF-κB in macrophages was attenuated by IKKβ deficiency (Figure 1D). It is worth noting that NF-κB activity was not completely blocked in macrophages of IKKβ^{ΔMye}LDLR^{-/-} mice, which may be because of the incomplete gene deletion induced by LysM-Cre/LoxP (Figure 1A and 1B). These results indicate that IKKβ expression levels were significantly decreased in macrophages of IKKβ^{ΔMye}LDLR^{-/-} mice, and activation of NF-κB was inhibited in IKKβ-deficient macrophages.

Deficiency of IKKβ in Macrophages Does Not Affect Plasma Lipid Levels But Decreases Atherosclerosis in LDLR^{-/-} Mice

To assess the impact of deficiency of macrophage IKKβ on atherosclerosis, 4-week-old male IKKβ^{ΔMye}LDLR^{-/-} and IKKβ^{F/F}LDLR^{-/-} littermates were fed a high-fat Western diet for 12 weeks. At 16 weeks of age, no significant differences in body weight, lean mass, fat mass, and fasting glucose levels were observed in IKKβ^{ΔMye}LDLR^{-/-} and IKKβ^{F/F}LDLR^{-/-} mice (Figure II in the online-only Data Supplement). Both IKKβ^{ΔMye}LDLR^{-/-} and IKKβ^{F/F}LDLR^{-/-} mice had diet-induced hyperlipidemia, but myeloid IKKβ deficiency did not affect plasma total cholesterol and triglyceride levels (Figure 2A and 2B). Furthermore,

fast-performance liquid chromatography analysis showed that $\text{IKK}\beta^{\Delta\text{Mye}}\text{LDLR}^{-/-}$ and $\text{IKK}\beta^{\text{F/F}}\text{LDLR}^{-/-}$ mice had similar plasma cholesterol distribution pattern (Figure 2C).

Quantification of cross-sectional lesion areas at the aortic root revealed that $\text{IKK}\beta^{\Delta\text{Mye}}\text{LDLR}^{-/-}$ mice had 25% decreased lesion area ($310\,900 \pm 28\,310\ \mu\text{m}^2$) compared with $\text{IKK}\beta^{\text{F/F}}\text{LDLR}^{-/-}$ littermates ($414\,500 \pm 30\,940\ \mu\text{m}^2$; Figure 3A). In addition to aorta, deficiency of myeloid $\text{IKK}\beta$ also inhibited atherosclerosis development in the brachiocephalic artery, an artery prone to developing advanced lesions. Brachiocephalic artery cross-sectional lesion areas were decreased 51% in $\text{IKK}\beta^{\Delta\text{Mye}}\text{LDLR}^{-/-}$ mice ($38\,930 \pm 6571\ \mu\text{m}^2$) compared with $\text{IKK}\beta^{\text{F/F}}\text{LDLR}^{-/-}$ mice ($79\,950 \pm 15\,320\ \mu\text{m}^2$; Figure 3B). Furthermore, en face analysis of the aortic arch also showed 32% decreased lesions in $\text{IKK}\beta^{\Delta\text{Mye}}\text{LDLR}^{-/-}$ mice ($9.96 \pm 0.62\%$ in $\text{IKK}\beta^{\text{F/F}}\text{LDLR}^{-/-}$ mice and $6.73 \pm 1.01\%$ in $\text{IKK}\beta^{\Delta\text{Mye}}\text{LDLR}^{-/-}$ mice; Figure 3C). Taken together, deficiency of myeloid $\text{IKK}\beta$ significantly decreased diet-induced atherosclerosis in $\text{LDLR}^{-/-}$ mice.

Deficiency of $\text{IKK}\beta$ Attenuates Macrophage Inflammatory Responses and Reduces Lesional Inflammation

In atherosclerosis, macrophages participate in inflammatory responses that contribute to expansion of the subendothelial layer and lesion formation and progression.² To determine the role of $\text{IKK}\beta$ in the regulation of macrophage inflammatory responses, BMMs were isolated from $\text{IKK}\beta^{\text{F/F}}\text{LDLR}^{-/-}$ and $\text{IKK}\beta^{\Delta\text{Mye}}\text{LDLR}^{-/-}$ mice and treated with endotoxin LPS. Gene expression analyses showed that the ability of LPS to induce expression of mRNAs encoding $\text{TNF}\alpha$, monocyte chemoattractant protein (MCP)-1, interleukin (IL)-1 α , IL-1 β , vascular cell adhesion molecule-1, and intercellular adhesion molecule-1 was attenuated in macrophages of $\text{IKK}\beta^{\Delta\text{Mye}}\text{LDLR}^{-/-}$ mice (Figure 4A). These results suggest that ablation of $\text{IKK}\beta$ reduces $\text{NF-}\kappa\text{B}$ -regulated proinflammatory gene expression in macrophages. Indeed, gene profiling of peritoneal macrophages isolated from Western diet-fed $\text{IKK}\beta^{\Delta\text{Mye}}\text{LDLR}^{-/-}$ mice showed downregulation of several proinflammatory molecules, including $\text{TNF}\alpha$, IL-1 α , IL-1 β , intercellular adhesion molecule-1, and vascular cell adhesion molecule-1 (Figure 4B). Interestingly, the expression levels of IL-10, an anti-inflammatory cytokine, were also decreased in peritoneal macrophages of $\text{IKK}\beta^{\Delta\text{Mye}}\text{LDLR}^{-/-}$ mice. We also noted that the expression levels of another $\text{NF-}\kappa\text{B}$ target gene, CCR7 ,²⁵ were significantly decreased by $\text{IKK}\beta$ deficiency. Consistent with in vitro gene expression analyses, immunofluorescence staining showed that the expression levels of several key inflammatory cytokines, including MCP-1, $\text{TNF}\alpha$, and IL-1 β , were decreased in the atherosclerotic lesions of $\text{IKK}\beta^{\Delta\text{Mye}}\text{LDLR}^{-/-}$ mice (Figure 4C). Thus, deficiency of $\text{IKK}\beta$ attenuated macrophage inflammatory responses and reduced lesional inflammation.

Ablation of $\text{IKK}\beta$ Modulates Macrophage Functions Related to Atherosclerosis Development

One of the earliest events in atherogenesis is the entry of monocytes, the precursors of macrophages, into the arterial wall. Several $\text{NF-}\kappa\text{B}$ -regulated chemokines and adhesion molecules were downregulated in macrophages of $\text{IKK}\beta^{\Delta\text{Mye}}\text{LDLR}^{-/-}$ mice (Figure 4). We next investigated the effects of $\text{IKK}\beta$ deficiency on macrophage adhesion and migration properties. Incubation of freshly isolated macrophages with primary ECs showed that ablation of $\text{IKK}\beta$ significantly decreased adhesion of macrophage to ECs (Figure 5A). We also examined the effects of $\text{IKK}\beta$ deficiency on macrophage migration by transwell assay. As shown in Figure 5B, $\text{IKK}\beta$ deficiency significantly decreased the migration of peritoneal macrophages. Furthermore, LPS stimulated migration of macrophages isolated from $\text{IKK}\beta^{\text{F/F}}\text{LDLR}^{-/-}$ mice, and this induction was abolished in those from $\text{IKK}\beta^{\Delta\text{Mye}}\text{LDLR}^{-/-}$ mice. Therefore, ablation of $\text{IKK}\beta$ decreases the macrophage adhesion and migration abilities.

Accumulation of lipid-loaded macrophages is a hallmark of atherosclerosis.²⁶ Interestingly, oxidized LDL uptake and foam cell formation were substantially reduced in macrophages of $\text{IKK}\beta^{\Delta\text{Mye}}\text{LDLR}^{-/-}$ mice compared with that of $\text{IKK}\beta^{\text{F/F}}\text{LDLR}^{-/-}$ mice (Figure 5C and 5D), which may be attributed to the decreased type A scavenger receptor mRNA levels in $\text{IKK}\beta$ -deficient macrophages (Figure III in the online-only Data Supplement). Taken together, ablation of $\text{IKK}\beta$ decreased adhesion, migration, and lipid uptake in macrophages, which may coordinately contribute to decreased atherosclerosis in $\text{IKK}\beta^{\Delta\text{Mye}}\text{LDLR}^{-/-}$ mice.

Discussion

Although the role of $\text{IKK}\beta/\text{NF-}\kappa\text{B}$ pathway in inflammation and immune response has been extensively studied in the past 2 decades, the contribution of cell-type-specific $\text{NF-}\kappa\text{B}$ activation to atherosclerosis development is still poorly understood. In this study, we generated myeloid-specific $\text{IKK}\beta$ -deficient $\text{LDLR}^{-/-}$ mice to investigate the impact of macrophage $\text{IKK}\beta$ expression on atherosclerosis development. Deficiency of $\text{IKK}\beta$ in myeloid cells did not affect diet-induced hyperlipidemia but significantly decreased atherosclerosis in $\text{LDLR}^{-/-}$ mice (Figure 3). $\text{IKK}\beta$ deficiency decreased macrophage inflammatory responses and reduced LPS-induced proinflammatory gene expression (Figure 4). Many $\text{NF-}\kappa\text{B}$ -regulated proinflammatory molecules were downregulated in $\text{IKK}\beta^{\Delta\text{Mye}}\text{LDLR}^{-/-}$ macrophages. Furthermore, the protein levels of several proinflammatory cytokines, including MCP-1, $\text{TNF}\alpha$, and IL-1 β , were decreased in the atherosclerotic lesions of $\text{IKK}\beta^{\Delta\text{Mye}}\text{LDLR}^{-/-}$ mice. Those molecules play important roles in atherosclerosis initiation and progression. For example, monocytes are attracted by MCP-1 to lesion-prone areas, which is considered a critical step in atherosclerosis initiation.^{1,26} Mice deficient in MCP-1 have significantly reduced atherosclerotic lesions.²⁷ We also found that $\text{IKK}\beta$ -deficient macrophages adhered less robustly to ECs and showed impaired migratory responses compared with control macrophages (Figure 5). Therefore, the attenuated macrophage inflammatory responses and impaired adhesion and migration properties may coordinately contribute to the decreased atherosclerosis in $\text{IKK}\beta^{\Delta\text{Mye}}\text{LDLR}^{-/-}$ mice.

In addition to decreased inflammatory responses, lipid uptake and foam cell formation were also substantially reduced in the macrophages of $\text{IKK}\beta^{\Delta\text{Mye}}\text{LDLR}^{-/-}$ mice compared with that of $\text{IKK}\beta^{\text{F/F}}\text{LDLR}^{-/-}$ mice. The decreased lipid uptake in $\text{IKK}\beta$ -deficient macrophages may be attributed to the reduced expression levels of type A scavenger receptor that plays an important role in macrophage lipid uptake and foam cell formation.^{28,29} Our results are consistent with a previous report that inhibition of $\text{NF-}\kappa\text{B}$ activity in macrophages reduces foam cell formation.¹³ Deficiency of $\text{NF-}\kappa\text{B}$ subunit p50 was also reported to decrease type A scavenger receptor expression and reduce lipid uptake in activated macrophages.¹⁵ Whereas the *in vivo* effects of type A scavenger receptor deficiency on atherosclerosis development remain unclear and controversial,²⁸⁻³⁰ the decreased atherosclerosis in $\text{IKK}\beta^{\Delta\text{Mye}}\text{LDLR}^{-/-}$ was very likely caused by the combined effects of decreased inflammation, adhesion, migration, and lipid uptake in macrophages.

$\text{IKK}\beta$ -dependent $\text{NF-}\kappa\text{B}$ activation has been implicated in vascular pathologies, and many studies have implicated that inhibition of $\text{NF-}\kappa\text{B}$ activation in macrophages have antiatherogenic effects.^{2,13,14} However, Kanters et al¹² previously reported that bone marrow transplantation of macrophages lacking $\text{IKK}\beta$ increased atherosclerotic lesion sizes in $\text{LDLR}^{-/-}$ mice. The discrepancy between our atherosclerosis results and those reported by Kanters et al¹² may be attributed to differences in experimental design. Although the same LysM-Cre transgenic mice were used by both groups, Kanter et al¹² used a different $\text{IKK}\beta^{\text{F/F}}$ mouse model to generate $\text{IKK}\beta^{\Delta\text{Mye}}$ mice. In their study, 10-week-old irradiated $\text{LDLR}^{-/-}$ mice were transplanted with control or $\text{IKK}\beta$ -deficient macrophages from $\text{IKK}\beta^{\text{F/F}}$

and $\text{IKK}\beta^{\Delta\text{Mye}}$ mice, respectively. After 4 weeks of recovery and 10 weeks on a high-fat diet (16% fat, 0.15% cholesterol), mice were euthanized, and the authors found that those 24-week-old $\text{LDLR}^{-/-}$ mice transplanted with $\text{IKK}\beta$ -deficient macrophages had increased atherosclerosis in the aortic root,¹² the only location they measured atherosclerotic lesion size. The authors found that $\text{IKK}\beta$ deficiency inhibited LPS-induced production of IL-10, which has anti-inflammatory and antiatherogenic effects in mice. However, $\text{IKK}\beta$ -deficient macrophages also exhibited a strong reduction in $\text{TNF}\alpha$ production.¹² Therefore, the definitive mechanism for increased lesion area in $\text{LDLR}^{-/-}$ mice transplanted with $\text{IKK}\beta$ -deficient macrophages is unclear.

In this study, we used a different approach to explore the issue of macrophage $\text{IKK}\beta$ involvement of atherogenesis. Instead of bone marrow transplantation, we brought the well-characterized $\text{IKK}\beta^{\Delta\text{Mye}}$ mice^{17,18} onto a $\text{LDLR}^{-/-}$ background. Four-week-old $\text{IKK}\beta^{\Delta\text{Mye}}\text{LDLR}^{-/-}$ mice and their control littermates were fed a standard Western diet (21.2% fat, 0.2% cholesterol) for 12 weeks. We found that $\text{IKK}\beta^{\Delta\text{Mye}}\text{LDLR}^{-/-}$ mice developed smaller lesions in 3 different locations, including aortic root, brachiocephalic artery, and aortic arch, compared with their control littermates. Consistent with previous reports,^{17,18} $\text{IKK}\beta$ deficiency decreased macrophage inflammatory responses. Despite the decreased IL-10 expression levels, the expression levels of many $\text{NF-}\kappa\text{B}$ -regulated proinflammatory molecules were downregulated in $\text{IKK}\beta^{\Delta\text{Mye}}\text{LDLR}^{-/-}$ macrophages. Furthermore, $\text{IKK}\beta^{\Delta\text{Mye}}\text{LDLR}^{-/-}$ macrophages had impaired adhesion, migration, and lipid uptake properties, which may also contribute to decreased atherosclerosis. Whereas bone marrow transplantation has been used extensively to study macrophage function in atherosclerosis, studies have found that bone marrow cells retain the potential to differentiate into a variety of nonhematopoietic cell lineages, including epithelial cells, hepatocytes, osteoblasts, chondrocytes, adipocytes, and perivascular cells.³¹⁻³⁴ It is plausible that those progenitor cells in bone marrow of animals on different background might affect the atherosclerosis development in $\text{LDLR}^{-/-}$ mice. Therefore, the methodological differences may account for the discrepant atherosclerosis outcomes between our and Kanters et al's studies. In addition, the different diets (16% fat versus 21.2% fat), duration of high-fat feeding (10 weeks versus 12 weeks), and ages of animals (24 weeks old versus 16 weeks old) used in these studies may also contribute to the difference in atherosclerotic lesion development.

The role of $\text{IKK}\beta$ in the regulation of proinflammatory genes has been well documented. Interestingly, $\text{IKK}\beta$ -mediated $\text{NF-}\kappa\text{B}$ activation can also transcriptionally regulate anti-inflammatory cytokines such as IL-10 (Figure 4B) and negatively regulate IL-1 β secretion in macrophages.³⁵ For example, Greten et al³⁵ used a high-dose LPS (30 mg/kg) to treat mice and found that mice with targeted $\text{IKK}\beta$ deletion in myeloid cells were more susceptible to endotoxin-induced shock. Consistent with our results (Figure 4A), LPS-mediated IL-1 β mRNA expression levels were inhibited in $\text{IKK}\beta$ -deficient macrophages.³⁵ However, $\text{NF-}\kappa\text{B}$ also controls genes such as PAI-2 and Bcl-X_L, whose products inhibit caspase-1-mediated pro-IL-1 β process in macrophages. Thus, $\text{NF-}\kappa\text{B}$ plays a dual role in the regulation of IL-1 β secretion (positively regulate IL-1 β mRNA transcription and negatively regulate pro-IL-1 β process), and prolonged inhibition of $\text{IKK}\beta$ may enhance IL-1 β secretion on endotoxin challenge. It is currently not clear whether $\text{IKK}\beta$ can negatively regulate IL-1 β secretion in chronic inflammatory diseases such as atherosclerosis and arthritis. Our study showed that deficiency of $\text{IKK}\beta$ reduced protein levels of IL-1 β and other key inflammatory mediators such as MCP-1 in atherosclerotic lesions of $\text{IKK}\beta^{\Delta\text{Mye}}\text{LDLR}^{-/-}$ mice (Figure 4C). Future studies are required to further understand the role of $\text{IKK}\beta$ in the regulation of IL-1 β secretion under chronic inflammatory conditions.

Macrophage migration plays an essential role in atherosclerotic lesion initiation and progression. The down-regulation of NF- κ B-regulated chemokines and adhesion molecules such as CCR7, MCP-1, and intercellular adhesion molecule-1 may contribute to decreased adhesion and migration of IKK β -deficient macrophages (Figure 5). Recent studies also demonstrated the possibility to decrease atherosclerosis by increasing macrophage emigration from atherosclerotic lesions.^{36,37} CCR7 has been identified to be an important chemokine for promoting the egress of macrophage from the arterial wall during atherosclerosis regression.^{36,37} It is possible that the decreased CCR7 expression in IKK β -deficient macrophages may affect atherosclerosis regression. However, deficiency of CCR7 have been shown to decrease atherosclerotic plaque development in ApoE^{-/-} mice³⁸ and lead to suppressed monocyte recruitment and increased levels of circulating leukocytes in ApoE^{-/-} mice during atherosclerosis regression.³⁹ Very recently, Gils et al⁴⁰ reported that other factors such as netrin-1 also regulate macrophage emigration, and targeted deletion of netrin-1 in macrophages promoted the emigration of macrophages from plaques and decreased atherosclerosis. Thus, the mechanisms that regulate atherosclerosis regression are not well understood, and it would be interesting to investigate the potential role of IKK β in regulating macrophage emigration and atherosclerosis regression in the future.

In summary, we demonstrate that myeloid-specific IKK β deficiency decreases atherosclerosis in LDLR^{-/-} mice. IKK β plays an important role in modulating macrophage functions related to atherosclerosis. Ablation of IKK β attenuated macrophage inflammatory responses and decreased macrophage adhesion, migration, and lipid uptake. These findings suggest that inhibition of NF- κ B activity in myeloid may represent a feasible therapeutic strategy to combat atherosclerosis.

Supplementary Material

Refer to Web version on PubMed Central for supplementary material.

Acknowledgments

We thank Dr Jan Breslow at Rockefeller University for invaluable advices, discussions, and technical support; Dr Michael Karin at University California, San Diego for IKK β flox mice; and Dr Alan Daugherty and Deborah Howatt for fast-performance liquid chromatography analysis.

Sources of Funding

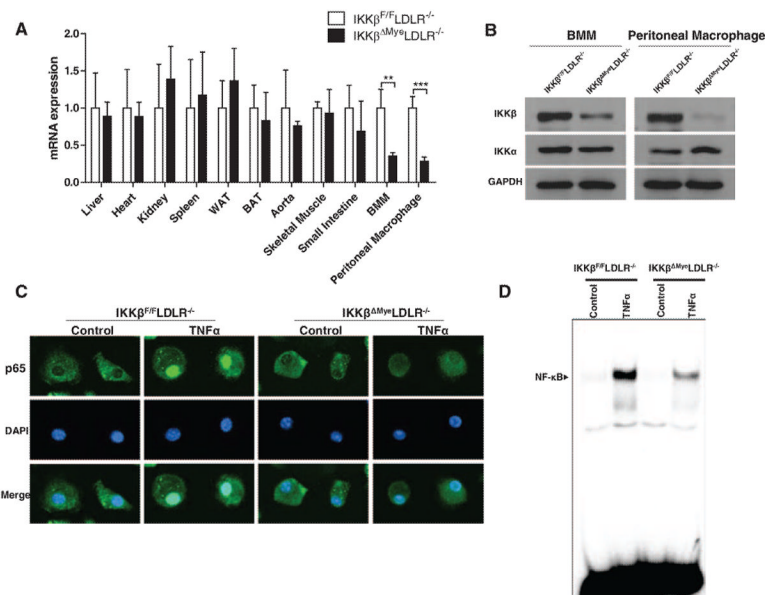
This work was supported, in part, by National Institutes of Health (NIH) grants P20RR021954, P20GM103527, and P30HL101300. R.N.H. was supported by NIH training grant 5T32HL072743. C.Z. was supported by American Heart Association grant 09SDG2150176.

References

1. Libby P. Inflammation in atherosclerosis. *Nature*. 2002; 420:868–874. [PubMed: 12490960]
2. Moore KJ, Tabas I. Macrophages in the pathogenesis of atherosclerosis. *Cell*. 2011; 145:341–355. [PubMed: 21529710]
3. Hayden MS, Ghosh S. Shared principles in NF-kappaB signaling. *Cell*. 2008; 132:344–362. [PubMed: 18267068]
4. Baker RG, Hayden MS, Ghosh S. NF- κ B, inflammation, and metabolic disease. *CellMetab*. 2011; 13:11–22.
5. Zhou C, Tabb MM, Nelson EL, Grün F, Verma S, Sadatrafiei A, Lin M, Mallick S, Forman BM, Thummel KE, Blumberg B. Mutual repression between steroid and xenobiotic receptor and NF-kappaB signaling pathways links xenobiotic metabolism and inflammation. *J Clin Invest*. 2006; 116:2280–2289. [PubMed: 16841097]

6. Karin M. Nuclear factor-kappaB in cancer development and progression. *Nature*. 2006; 441:431–36. [PubMed: 16724054]
7. Brand K, Page S, Rogler G, Bartsch A, Brandl R, Knuechel R, Page M, Kaltschmidt C, Baeuerle PA, Neumeier D. Activated transcription factor nuclear factor-kappa B is present in the atherosclerotic lesion. *J Clin Invest*. 1996; 97:1715–1722. [PubMed: 8601637]
8. Monaco C, Andreacos E, Kiriakidis S, Mauri C, Bicknell C, Foxwell B, Cheshire N, Paleolog E, Feldmann M. Canonical pathway of nuclear factor kappa B activation selectively regulates proinflammatory and prothrombotic responses in human atherosclerosis. *Proc Natl Acad Sci USA*. 2004; 101:5634–5639. [PubMed: 15064395]
9. Idel S, Dansky HM, Breslow JL. A20, a regulator of NFkappaB, maps to an atherosclerosis locus and differs between parental sensitive C57BL/6J and resistant FVB/N strains. *Proc Natl Acad Sci USA*. 2003; 100:14235–14240. [PubMed: 14614151]
10. Wolfrum S, Teupser D, Tan M, Chen KY, Breslow JL. The protective effect of A20 on atherosclerosis in apolipoprotein E-deficient mice is associated with reduced expression of NF-kappaB target genes. *Proc Natl Acad Sci USA*. 2007; 104:18601–18606. [PubMed: 18006655]
11. Gareus R, Kotsaki E, Xanthoulea S, van der Made I, Gijbels MJ, Kardakaris R, Polykratis A, Kollias G, de Winther MP, Pasparakis M. Endothelial cell-specific NF-kappaB inhibition protects mice from atherosclerosis. *Cell Metab*. 2008; 8:372–383. [PubMed: 19046569]
12. Kanters E, Pasparakis M, Gijbels MJ, Vergouwe MN, Partouns-Hendriks I, Fijneman RJ, Clausen BE, Forster I, Kockx MM, Rajewsky K, Kraal G, Hofker MH, de Winther MP. Inhibition of NF-kappaB activation in macrophages increases atherosclerosis in LDL receptor-deficient mice. *J Clin Invest*. 2003; 112:1176–1185. [PubMed: 14561702]
13. Ferreira V, van Dijk KW, Groen AK, Vos RM, van der Kaa J, Gijbels MJ, Havekes LM, Pannekoek H. Macrophage-specific inhibition of NF-kappaB activation reduces foam-cell formation. *Atherosclerosis*. 2007; 192:283–290. [PubMed: 16938301]
14. Goossens P, Vergouwe MN, Gijbels MJ, Curfs DM, van Woezik JH, Hoeksema MA, Xanthoulea S, Leenen PJ, Rupec RA, Hofker MH, de Winther MP. Myeloid I κ Ba deficiency promotes atherogenesis by enhancing leukocyte recruitment to the plaques. *PLoS ONE*. 2011; 6:e22327. [PubMed: 21814576]
15. Kanters E, Gijbels MJ, van der Made I, Vergouwe MN, Heeringa P, Kraal G, Hofker MH, de Winther MP. Hematopoietic NF-kappaB1 deficiency results in small atherosclerotic lesions with an inflammatory phenotype. *Blood*. 2004; 103:934–940. [PubMed: 14512319]
16. Clausen BE, Burkhardt C, Reith W, Renkawitz R, Förster I. Conditional gene targeting in macrophages and granulocytes using LysMcre mice. *Transgenic Res*. 1999; 8:265–277. [PubMed: 10621974]
17. Greten FR, Eckmann L, Greten TF, Park JM, Li ZW, Egan LJ, Kagnoff MF, Karin M. IKKbeta links inflammation and tumorigenesis in a mouse model of colitis-associated cancer. *Cell*. 2004; 118:285–296. [PubMed: 15294155]
18. Park JM, Greten FR, Li ZW, Karin M. Macrophage apoptosis by anthrax lethal factor through p38 MAP kinase inhibition. *Science*. 2002; 297:2048–2051. [PubMed: 12202685]
19. Zhou C, Pridgen B, King N, Xu J, Breslow JL. Hyperglycemic Ins2AkitaLdlr^{-/-} mice show severely elevated lipid levels and increased atherosclerosis: a model of type 1 diabetic macrovascular disease. *J Lipid Res*. 2011; 52:1483–1493. [PubMed: 21606463]
20. Sui Y, Xu J, Rios-Pilier J, Zhou C. Deficiency of PXR decreases atherosclerosis in apoE-deficient mice. *J Lipid Res*. 2011; 52:1652–1659. [PubMed: 21685500]
21. Daugherty A, Whitman SC. Quantification of atherosclerosis in mice. *Methods Mol Biol*. 2003; 209:293–309. [PubMed: 12357958]
22. Li Y, Tong X, Rumala C, Clemons K, Wang S. Thrombospondin1 deficiency reduces obesity-associated inflammation and improves insulin sensitivity in a diet-induced obese mouse model. *PLoS ONE*. 2011; 6:e26656. [PubMed: 22039525]
23. Han SG, Eum SY, Toborek M, Smart E, Hennig B. Polychlorinated biphenyl-induced VCAM-1 expression is attenuated in aortic endothelial cells isolated from caveolin-1 deficient mice. *Toxicol Appl Pharmacol*. 2010; 246:74–82. [PubMed: 20406653]

24. Ribas V, Drew BG, Le JA, Soleymani T, Daraei P, Sitz D, Mohammad L, Henstridge DC, Febbraio MA, Hewitt SC, Korach KS, Bensinger SJ, Hevener AL. Myeloid-specific estrogen receptor alpha deficiency impairs metabolic homeostasis and accelerates atherosclerotic lesion development. *Proc Natl Acad Sci USA*. 2011; 108:16457–16462. [PubMed: 21900603]
25. Mburu YK, Egloff AM, Walker WH, Wang L, Seethala RR, van Waes C, Ferris RL. Chemokine receptor 7 (CCR7) gene expression is regulated by NF- κ B and activator protein 1 (AP1) in metastatic squamous cell carcinoma of head and neck (SCCHN). *J Biol Chem*. 2012; 287:3581–3590. [PubMed: 22158872]
26. Lusis AJ. Atherosclerosis. *Nature*. 2000; 407:233–241. [PubMed: 11001066]
27. Gu L, Okada Y, Clinton SK, Gerard C, Sukhova GK, Libby P, Rollins BJ. Absence of monocyte chemoattractant protein-1 reduces atherosclerosis in low density lipoprotein receptor-deficient mice. *Mol Cell*. 1998; 2:275–281. [PubMed: 9734366]
28. Suzuki H, Kurihara Y, Takeya M, et al. A role for macrophage scavenger receptors in atherosclerosis and susceptibility to infection. *Nature*. 1997; 386:292–296. [PubMed: 9069289]
29. Babaev VR, Gleaves LA, Carter KJ, Suzuki H, Kodama T, Fazio S, Linton MF. Reduced atherosclerotic lesions in mice deficient for total or macrophage-specific expression of scavenger receptor-A. *Arterioscler Thromb Vasc Biol*. 2000; 20:2593–2599. [PubMed: 11116058]
30. Manning-Tobin JJ, Moore KJ, Seimon TA, Bell SA, Sharuk M, Alvarez-Leite JI, de Winther MP, Tabas I, Freeman MW. Loss of SR-A and CD36 activity reduces atherosclerotic lesion complexity without abrogating foam cell formation in hyperlipidemic mice. *Arterioscler Thromb Vasc Biol*. 2009; 29:19–26. [PubMed: 18948635]
31. Alison MR, Poulosom R, Jeffery R, Dhillon AP, Quaglia A, Jacob J, Novelli M, Prentice G, Williamson J, Wright NA. Hepatocytes from non-hepatic adult stem cells. *Nature*. 2000; 406:257. [PubMed: 10917519]
32. Méndez-Ferrer S, Michurina TV, Ferraro F, Mazloom AR, Macarthur BD, Lira SA, Scadden DT, Ma'ayan A, Enikolopov GN, Frenette PS. Mesenchymal and haematopoietic stem cells form a unique bone marrow niche. *Nature*. 2010; 466:829–834. [PubMed: 20703299]
33. Krause DS, Theise ND, Collector MI, Henegariu O, Hwang S, Gardner R, Neutzel S, Sharkis SJ. Multi-organ, multi-lineage engraftment by a single bone marrow-derived stem cell. *Cell*. 2001; 105:369–377. [PubMed: 11348593]
34. Lagasse E, Connors H, Al-Dhalimy M, Reitsma M, Dohse M, Osborne L, Wang X, Finegold M, Weissman IL, Grompe M. Purified hematopoietic stem cells can differentiate into hepatocytes in vivo. *Nat Med*. 2000; 6:1229–1234. [PubMed: 11062533]
35. Greten FR, Arkan MC, Bollrath J, et al. NF- κ B is a negative regulator of IL-1 β secretion as revealed by genetic and pharmacological inhibition of IKK β . *Cell*. 2007; 130:918–931. [PubMed: 17803913]
36. Trogan E, Feig JE, Dogan S, Rothblat GH, Angeli V, Tacke F, Randolph GJ, Fisher EA. Gene expression changes in foam cells and the role of chemokine receptor CCR7 during atherosclerosis regression in ApoE-deficient mice. *Proc Natl Acad Sci USA*. 2006; 103:3781–3786. [PubMed: 16537455]
37. Feig JE, Pineda-Torra I, Sanson M, et al. LXR promotes the maximal egress of monocyte-derived cells from mouse aortic plaques during atherosclerosis regression. *J Clin Invest*. 2010; 120:4415–4424. [PubMed: 21041949]
38. Luchtefeld M, Grothusen C, Galalick A, Jagavelu K, Schuett H, Tietge UJ, Pabst O, Grote K, Drexler H, Förster R, Schieffer B. Chemokine receptor 7 knockout attenuates atherosclerotic plaque development. *Circulation*. 2010; 122:1621–1628. [PubMed: 20921438]
39. Potteaux S, Gautier EL, Hutchison SB, van Rooijen N, Rader DJ, Thomas MJ, Sorci-Thomas MG, Randolph GJ. Suppressed monocyte recruitment drives macrophage removal from atherosclerotic plaques of ApoE $^{-/-}$ mice during disease regression. *J Clin Invest*. 2011; 121:2025–2036. [PubMed: 21505265]
40. van Gils JM, Derby MC, Fernandes LR, et al. The neuroimmune guidance cue netrin-1 promotes atherosclerosis by inhibiting the emigration of macrophages from plaques. *Nat Immunol*. 2012; 13:136–143. [PubMed: 22231519]

**Figure 1.**

Generation of low-density lipoprotein-deficient (LDLR^{-/-}) mice with myeloid-specific IκB kinase β (IKKβ) deficiency. **A**, IKKβ mRNA expression levels in major tissues and macrophages of IKKβ^{F/F}LDLR^{-/-} and IKKβ^{ΔMye}LDLR^{-/-} mice were analyzed by quantitative real-time polymerase chain reaction (***P*<0.01, ****P*<0.001, n=5). **B**, Western blot analysis of IKKβ and IKKα protein levels in bone marrow-derived macrophages (BMMs) and peritoneal macrophages of IKKβ^{F/F}LDLR^{-/-} and IKKβ^{ΔMye}LDLR^{-/-} mice. **C**, BMMs isolated from IKKβ^{F/F}LDLR^{-/-} and IKKβ^{ΔMye}LDLR^{-/-} mice were stimulated with tumor necrosis factor-α (TNFα) (20 ng/mL) or vehicle for 30 minutes. Cells were then fixed and stained with anti-p65 primary antibody, followed by fluorescein-labeled secondary antibody (green). The nuclei were visualized with diamidino-2-phenylindole (blue). A representative figure from 3 independent experiments with similar results is shown (original magnification, ×400). **D**, Macrophages were stimulated with TNFα (20 ng/mL) or vehicle for 30 minutes. Nuclear proteins were extracted, and nuclear factor (NF)-κB binding activity was determined by electrophoretic mobility shift assay. WAT indicates white adipose tissue; BAT, brown adipose tissue.

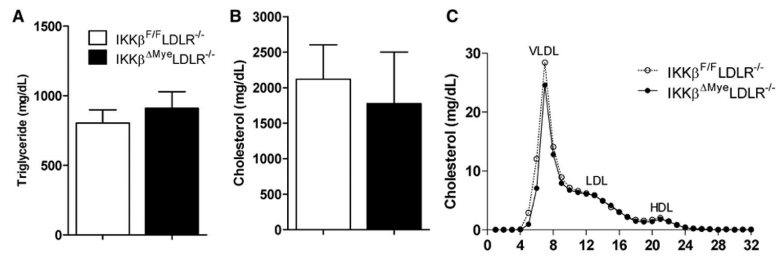


Figure 2. Myeloid-specific I κ B kinase β (IKK β) deficiency does not affect plasma lipid levels in low-density lipoprotein-deficient (LDLR $^{-/-}$) mice. Four-week-old male IKK $\beta^{F/F}LDLR^{-/-}$ and IKK $\beta^{\Delta Mye}LDLR^{-/-}$ littermates were fed a Western diet for 12 weeks. The plasma levels of triglyceride (**A**) and cholesterol (**B**) were measured by standard method (n=9–10 per group), and plasma cholesterol distribution (**C**) was analyzed by fast-performance liquid chromatography. HDL indicates high-density lipoprotein; VLDL, very-low-density lipoprotein.

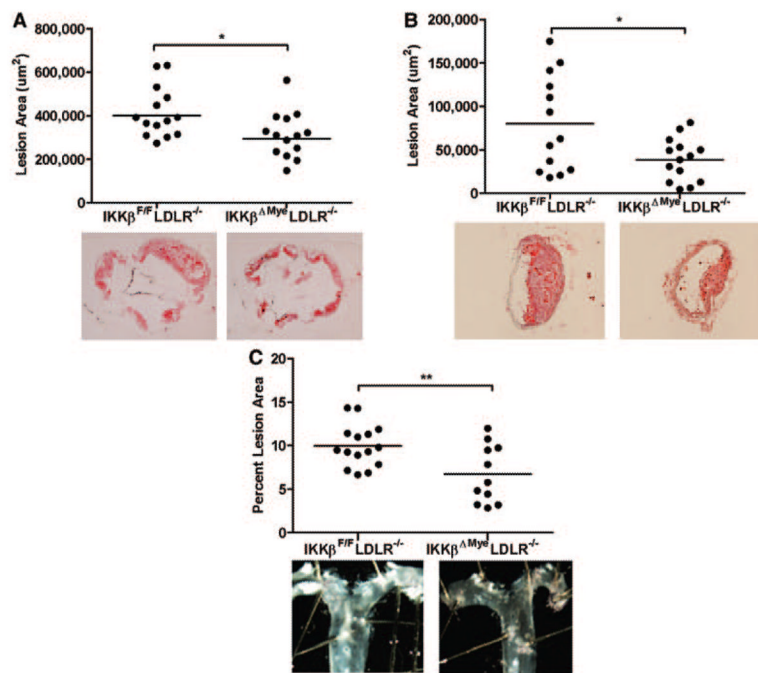
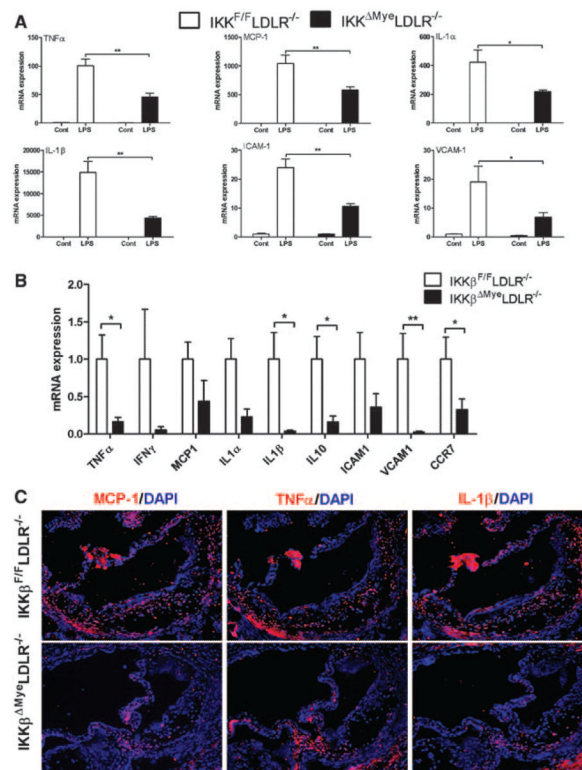


Figure 3. Deficiency of myeloid IκB kinase β (IKKβ) decreases atherosclerosis in low-density lipoprotein-deficient (LDLR^{-/-}) mice. Quantitative analysis of the lesion area in the aortic root (A), brachiocephalic artery (B), and aortic arch (C) of IKKβ^{F/F}LDLR^{-/-} and IKKβ^{ΔMye}LDLR^{-/-} mice (n=11-15 per group, **P*<0.05 and ***P*<0.01). Representative Oil-red-O-stained sections or en face aortic arches from each genotype are displayed next to the quantification data.

**Figure 4.**

Deficiency of I κ B kinase β (IKK β) attenuates macrophage inflammatory responses and reduces lesional inflammation. **A**, Bone marrow–derived macrophages isolated from IKK $\beta^{F/F}$ LDLR $^{-/-}$ and IKK $\beta^{\Delta Mye}$ LDLR $^{-/-}$ mice were treated with lipopolysaccharide (LPS) (500 ng/mL) or vehicle control for 4 hours. Expression of proinflammatory cytokines was analyzed by quantitative real-time polymerase chain reaction (QPCR; * P <0.05, ** P <0.01, n =3). **B**, Gene profile by QPCR of peritoneal macrophages from Western diet (WD)–fed IKK $\beta^{F/F}$ LDLR $^{-/-}$ and IKK $\beta^{\Delta Mye}$ LDLR $^{-/-}$ mice (* P <0.05, ** P <0.01, n =4–6 per group). **C**, Sections of atherosclerotic lesions in the aortic root of WD-fed IKK $\beta^{F/F}$ LDLR $^{-/-}$ and IKK $\beta^{\Delta Mye}$ LDLR $^{-/-}$ mice were stained with antibodies against mouse monocyte chemoattractant protein (MCP)-1, tumor necrosis factor- α (TNF α), or interleukin (IL)-1 β followed by fluorescein-labeled secondary antibody (red). The nuclei were stained with diamidino-2-phenylindole (DAPI; blue). A representative figure from 3 mice per group and the similar result is shown (original magnification, \times 100). ICAM indicates intercellular adhesion molecule; LDLR $^{-/-}$, low-density lipoprotein receptor–deficient mice.

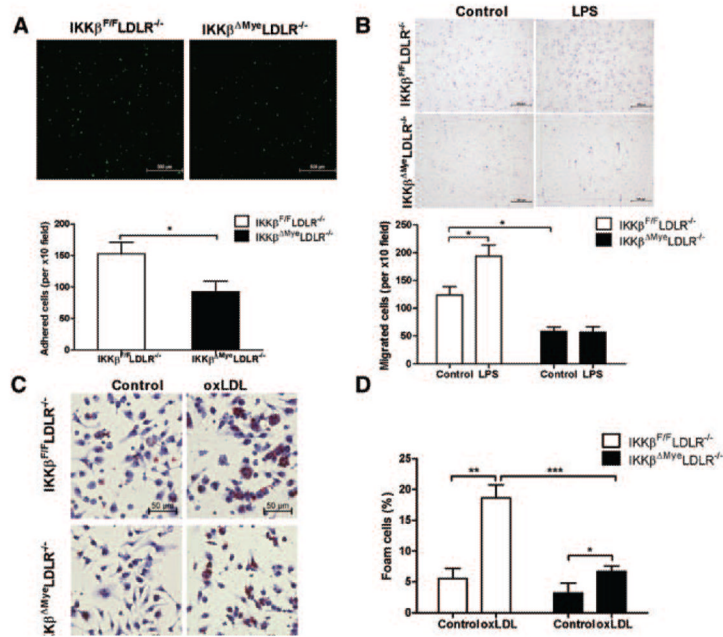


Figure 5.

Ablation of IκB kinase β (IKKβ) modulates macrophage function related to atherosclerosis development. **A**, Peritoneal macrophages isolated from IKKβ^{F/F}LDLR^{-/-} and IKKβ^{ΔMye}LDLR^{-/-} mice were labeled with calcein acetoxymethyl (AM) and cultured with primary porcine endothelial cell monolayer for 30 minutes. Adhered cells were then counted under a fluorescence microscope using a ×10 objective, and quantification of 3 independent experiments is presented in the **bottom panel** (**P*<0.05). **B**, Peritoneal macrophages were seeded on the transwell filters and stimulated with control media or media containing 500ng/mL LPS (**lower chambers**) for 6 hours. Cells that migrated to the underside of transwell were stained with hematoxylin and counted under the microscope (**P*<0.05, *n*=3). **C**, Fresh isolated peritoneal macrophages from IKKβ^{F/F}LDLR^{-/-} and IKKβ^{ΔMye}LDLR^{-/-} mice were incubated with oxidized LDL (oxLDL; 100 μg/mL) for 24 hours and stained with Oil-red-O and hematoxylin. **D**, Foam cell quantification from peritoneal macrophages in studies described in **C** (**P*<0.05, **P*<0.01, ****P*<0.001, *n*=3). LDLR^{-/-} indicates low-density lipoprotein receptor-deficient mice.