

Published in final edited form as:

*J Immunol.* 2014 April 15; 192(8): 3697–3708. doi:10.4049/jimmunol.1303420.

## ***Staphylococcus aureus* infection of mice expands a population of memory $\gamma\delta$ T cells that are protective against subsequent infection**

Alison G. Murphy\*, Kate M. O’Keeffe\*, Stephen J. Lalor\*, Belinda M. Maher\*, Kingston H. G. Mills†, and Rachel M. McLoughlin\*

\*Host Pathogen Interactions Group, School of Biochemistry and Immunology, Trinity Biomedical Sciences Institute, 152-160 Pearse St., Dublin 2, Ireland †Immune Regulation Research Group, School of Biochemistry and Immunology, Trinity Biomedical Sciences Institute, 152-160 Pearse St., Dublin 2, Ireland

### **Abstract**

The development of vaccines against *S. aureus* has consistently failed in clinical trials, likely due to inefficient induction of cellular immunity. T cell-derived IL-17 is one of the few known correlates of anti-staphylococcal immunity, conferring protection against *S. aureus* infections through its ability to promote phagocytic cell effector functions. A comprehensive understanding of the discrete T cell subsets critical for site-specific IL-17-mediated bacterial clearance will therefore be necessary to inform the development of vaccines that efficiently target cellular immunity. In this study, we have identified a population of CD44<sup>+</sup>CD27<sup>-</sup> memory  $\gamma\delta$  T cells, expanded upon infection of C57BL/6 mice with *S. aureus*, which produce high levels of IL-17 and mediate enhanced bacterial clearance upon re-infection with the bacterium. These cells are comprised largely of the V $\gamma$ 4<sup>+</sup> subset and accumulate at the site of infection subsequent to an initial V $\gamma$ 1.1<sup>+</sup> and V $\gamma$ 2<sup>+</sup> T cell response. Moreover, these V $\gamma$ 4<sup>+</sup> T cells are retained in the peritoneum and draining mediastinal lymph nodes for a prolonged period following bacterial clearance. In contrast to its critical requirement for  $\gamma\delta$  T cell activation during the primary infection, IL-1 signalling was dispensable for activation and expansion of memory  $\gamma\delta$  T cells upon re-exposure to *S. aureus*. Our findings demonstrate that a  $\gamma\delta$  T cell memory response can be induced upon exposure to *S. aureus*, in a fashion analogous to that associated with classical  $\alpha\beta$  T cells, and suggest that induction of IL-17-expressing  $\gamma\delta$  T cells may be an important property of a protective vaccine against *S. aureus*.

### **Keywords**

*S. aureus*;  $\gamma\delta$  T cells; T cell memory; IL-17

---

Address correspondence and reprint requests to Dr Rachel McLoughlin, School of Biochemistry & Immunology, Room 3.13, Trinity Biomedical Sciences Institute, Trinity College Dublin, Dublin 2, Ireland; rachel.mcloughlin@tcd.ie; Phone: +353-1-896 2526; Fax: +353-1-6772400.

### **Disclosures**

K.H.G. Mills is co-founder and shareholder of Opsona Therapeutics Ltd. and TriMod Therapeutics Ltd., university start-up companies involved in the development of immunotherapeutics.

## Introduction

*Staphylococcus aureus* is a Gram-positive coccal bacterium comprising part of the normal microbiota of a majority of the healthy human population (1-3). Upon invasive entry, *S. aureus* is capable of causing a wide range of illnesses from minor skin infections such as cellulitis, folliculitis and impetigo, to more life threatening diseases such as endocarditis, toxic shock syndrome, bacteraemia, pneumonia and sepsis (4). The treatment of staphylococcal infections has become increasingly difficult with the emergence of antibiotic resistant strains in healthcare-associated settings, most notably methicillin-resistant *S. aureus* (MRSA). Moreover there is growing concern regarding the emergence of community-acquired MRSA infections in young, immunocompetent individuals outside of the healthcare system (5). Recent studies have reported the emergence of *S. aureus* strains resistant to vancomycin (6), linezolid (7) and daptomycin (8), the last viable treatment options for severe MRSA infections. It is clear that alternative approaches to standard antibiotic therapies are urgently required.

Despite showing promise in pre-clinical models, *S. aureus* vaccines have to date consistently failed in clinical trials. Their failure may reflect inefficient induction of cellular immunity (9, 10). Recent reports have suggested that T cells play an important protective role against *S. aureus* infections through their ability to promote phagocytic cell effector functions (11). Indeed, using novel adjuvant technology in combination with the *S. aureus* surface protein clumping factor A (ClfA), we have recently demonstrated vaccine-induced protection against acute systemic *S. aureus* infection in mice in the complete absence of an antibody response (12), supporting the notion that vaccine strategies should target T cell responses. Moreover, a recent report in the field of *Bordetella pertussis* has demonstrated not only the importance of inducing cellular immunity, but also the induction of appropriate subtypes of T cells critical for optimum vaccine-induced immunity (13). Studies involving *S. aureus* infection have demonstrated that Th1/Th17 cells play a protective role in systemic infection (11), whilst  $\gamma\delta$  T cells were associated with protection in mucosal tissues (14-16) and at surgical site infections (17). A more comprehensive understanding of the specific T cell subsets critical for site-specific bacterial clearance is therefore required to inform the development of vaccines that efficiently target cellular immunity.

There is a growing literature on the importance of IL-17 in anti-bacterial immunity, through its role in neutrophil recruitment (18-22). Patients with hyper IgE syndrome (HIES), who have mutations in the gene encoding STAT3 leading to impaired Th17 cell function, suffer from recurrent and often severe *S. aureus* infections (23, 24). Furthermore, patients with atopic dermatitis are more susceptible to colonisation by *S. aureus* (25), due in part to decreased IL-17 responses (26). These and other studies have highlighted the key role for IL-17 in anti-staphylococcal immunity. Therefore, identifying the cellular sources of this cytokine will be vital in the design of novel *S. aureus* vaccines that promote protective cellular immunity.

$\gamma\delta$  T cells have recently been identified as a potent source of innate IL-17 and implicated in host protection in murine models of *S. aureus* infection. In a cutaneous infection model,  $\gamma\delta$  T cell-deficient mice had reduced neutrophil recruitment to the infection site and impaired bacterial clearance (15).  $\gamma\delta$  T cells were also shown to have a protective role in *S. aureus*-induced pneumonia through their capacity to produce IL-17 (14). We have recently reported that  $\gamma\delta$  T cells are the dominant source of IL-17 in a surgical site infection model, where IL-17R<sup>-/-</sup> and TCR $\delta$ <sup>-/-</sup> mice had increased susceptibility to *S. aureus* infection (17). In humans, the number of circulating  $\gamma\delta$  T cells can increase dramatically upon microbial infection, in some cases reaching more than 50% of peripheral T cells within days of infection onset (27). Using a humanised chimeric severe-combined immunodeficiency

(SCID) model, it was demonstrated that phosphoantigen-activated human V $\gamma$ 2V $\delta$ 2 cells can mediate resistance to murine *S. aureus* infection (28). Traditionally, studies investigating the induction of cellular memory and its induction by vaccines have primarily focused on  $\alpha\beta$  T cells. A recent report however, has demonstrated memory responses by  $\gamma\delta$  T cells in a model of *Listeria enteric* infection (29).

In this study we demonstrate for the first time that  $\gamma\delta$  T cells are the predominant source of IL-17 during *S. aureus* induced peritonitis. Interestingly, we have identified two waves of  $\gamma\delta$  T cell infiltration into the peritoneal cavity, characterised by distinct subsets. Initially, a rapid influx of V $\gamma$ 1.1 and V $\gamma$ 2 cells (Garman nomenclature), which was replaced later by a V $\gamma$ 4-dominant response. In a novel model of recurrent peritonitis, these V $\gamma$ 4<sup>+</sup> T cells were expanded for a prolonged period and responded more vigorously through IL-17 production during subsequent *S. aureus* infection, which was associated with enhanced protection. Induction of this IL-17 response by memory  $\gamma\delta$  T-cells was not dependent on IL-1 signalling, in contrast to its critical requirement for IL-17 production by  $\gamma\delta$  T-cells in naïve mice. Furthermore, transfer of *S. aureus*-primed  $\gamma\delta$  T cells conferred protection against *S. aureus* infection in naïve mice. Our findings demonstrate that a  $\gamma\delta$  T cell memory response can be induced upon exposure to *S. aureus*, in a fashion analogous to that associated with the classical  $\alpha\beta$  T cells of adaptive immunity, and suggest that induction of IL-17-expressing  $\gamma\delta$  T cells may be an important property of a protective vaccine against *S. aureus*.

## Materials and Methods

### Mice

Age and sex matched wild-type C57BL/6 and IL-1RI<sup>-/-</sup> (6-8 weeks old) were housed under specific pathogen-free conditions at the TCD Bioresources facility. All mice were maintained according to EU regulations and experiments were performed under licence from the Irish Department of Health and Children and with approval from the TCD Bioresources Ethics Committee.

### Bacteria

*S. aureus* strain PS80 is a capsular polysaccharide 8-expressing strain, and has been described previously (30). Staphylococci were cultivated from frozen stocks for 24 h at 37°C on Columbia agar supplemented with 2% NaCl. Bacterial suspensions were prepared in sterile PBS and adjusted to 5×10<sup>9</sup> CFU/ml by measuring the optical density of solutions at 600 nm. CFUs were verified by plating serial dilutions of each inoculum onto Tryptic Soy Agar (TSA).

### *S. aureus*-induced peritonitis

Mice were exposed to *S. aureus* by i.p. injection of 100  $\mu$ l bacterial suspension (5×10<sup>8</sup> CFU). The recurrent peritonitis model involved repeated exposure to *S. aureus* via i.p. injection on d 0, 7 and 14 before mice were allowed to recover for 21 d. On d 35 the previously exposed, infection-free mice received an i.p. challenge of *S. aureus* (5×10<sup>8</sup> CFU), in addition to a group of naïve mice that had not previously been exposed to *S. aureus*. At specific time points post challenge mice were sacrificed and systemic infection levels and immune responses assessed. Peritoneal exudate cells (PEC) were isolated from infected mice by lavage of the peritoneal cavity with 2 ml sterile PBS. The lavage fluid was centrifuged, supernatants stored at -20°C for subsequent cytokine analysis and PECs re-suspended in cRPMI (RPMI: Biosera, 10% fetal calf serum: Biosera, 100mM L-glutamine: Gibco, 100 $\mu$ g/ml penicillin/streptomycin: Gibco). The draining mediastinal lymph nodes (MLN) were isolated and disrupted over 40  $\mu$ M filters to obtain single cell suspensions. Erythrocytes were lysed using 0.87% ammonium chloride, cells washed and re-suspended in

cRPMI. Kidneys, liver and spleen were homogenized in 3 ml of sterile PBS. Total tissue bacterial burden was established by plating serial dilutions of peritoneal lavage or tissue homogenate on TSA plates for 24 h at 37°C. Results are expressed as CFU per ml.

### In vitro co-culture of purified $\gamma\delta$ T cells with *S. aureus* infected macrophages

PECs from naive mice were isolated as described above, transferred to a 96-well flat-bottomed plate ( $2 \times 10^5$  cells/well) and macrophages allowed to adhere for 1.5 h at 37°C and 5% CO<sub>2</sub> in cRPMI. The media was then aspirated and replaced with RPMI lacking antibiotics. Macrophages were infected with  $2 \times 10^6$  CFU/well of *S. aureus* (MOI 1:10) for 3 h at 37°C and 5% CO<sub>2</sub>. After 3 h the supernatant was aspirated and replaced with RPMI supplemented with gentomycin (100 µg/ml). Macrophages were then co-cultured with  $1 \times 10^5$  purified  $\gamma\delta$  T cells, isolated from naive or previously exposed mice (21 d post final exposure i.e. d 35), for 24 h at 37°C and 5% CO<sub>2</sub>. Purified  $\gamma\delta$  T cells were obtained by negative selection of CD3<sup>+</sup> T cells from the peritoneal cavity and the MLN of both naive and *S. aureus*-exposed mice using the murine Pan T cell isolation Kit II (Miltenyi Biotec), followed by FACS sorting of  $\gamma\delta$  T cells using antibodies specific to the  $\gamma\delta$ TCR (Beckmann Coulter (Dako) MoFlo Cell Sorter). Some experiments were carried out in the presence or absence of anti-IL-1RI monoclonal antibody (R&D, 4 µg/ml or 1 µg/ml) or anti-IL-23R monoclonal antibody (R&D, 1 µg/ml).

### ELISA

ELISAs for IL-1 $\alpha$ , IL-1 $\beta$ , IL-17 and IL-23 (R&D DuoSet) were performed on cell culture or peritoneal supernatants, as per the manufacturer's instructions. IL-18 ELISAs were performed with anti-IL-18 antibodies and IL-18 protein purchased from MBL.

### Flow Cytometry

PEC and MLN cells were incubated in the presence of Brefeldin A (Sigma) for 4 h at 37°C and 5% CO<sub>2</sub> to block cytokine secretion. Cells were then incubated with Fc $\gamma$  block (1 µg/ml) on ice before surface staining with fluorochrome-conjugated antibodies against CD3 (BD, clone 500A2),  $\gamma\delta$ TCR (Biolegend, clone GL3), IL-1R (Biolegend, clone JAMA147), V $\gamma$ 1.1 (Biolegend, clone 2.11), V $\gamma$ 2 (BD, clone UC3-10A6) and V $\gamma$ 3 (BD, clone 536). Garman nomenclature is used throughout this study (31). Cells were fixed and permeabilised using the Dako cytation Intrastain Kit, before intracellular staining with a fluorochrome-conjugated antibodies against IL-17A (eBioscience, clone 17B7) and IFN $\gamma$  (eBioscience, clone XMG1.2). Flow cytometric data was acquired with a BD FACSCanto II and analysed using FlowJo software (Tree Star, Inc). Gates are set on respective Fluorescence Minus One (FMOs).

### Amplification of the V $\gamma$ 4 gene in purified V $\gamma$ 1.1<sup>-</sup>V $\gamma$ 2<sup>-</sup> cells

Purified subsets of  $\gamma\delta$  T cells were obtained by negative selection of CD3<sup>+</sup> T cells isolated from the peritoneal cavity and the MLN of mice 3 h post-*S. aureus* infection using the murine Pan T cell isolation Kit II (Miltenyi Biotec), followed by FACS sorting of V $\gamma$ 1.1<sup>+</sup>, V $\gamma$ 2<sup>+</sup> and V $\gamma$ 3<sup>+</sup>  $\gamma\delta$  T cells using antibodies specific for each cell subset (Beckmann Coulter (Dako) MoFlo Cell Sorter). RNA was extracted from purified cells using the TRIzol/chloroform method (Invitrogen) and reverse transcribed into cDNA using the Applied Biosystems High Capacity cDNA Reverse Transcription kit, as per the manufacturer's instructions. Real-time PCR was performed on a CFX96 Touch real-time PCR detection system (Bio-Rad) using the following primer pairs: V $\gamma$ 1.1, Fw 5'-TTCTGCTGCCTCTGGGTTTTT-3' and Rev 5'-TCCCTCCTAAGGGTCGTTGAT-3'; V $\gamma$ 2, Fw 5'-TTGGTACCGGCAAAAACAATCA-3' and Rev 5'-CAATACACCCTTATGACATCG-3'; V $\gamma$ 3, Fw 5'-TTGCAAGCTCTCTGGGGTTC-3' and

Rev 5'-GGCACAGTAGTACGTGGCTT-3'; V $\gamma$ 4, Fw 5'-GGAAGCAGTCTCACGTCACC-3' and Rev 5'-CTGCCATGTCCTTGCCTCATA-3'; V $\gamma$ 5, Fw 5'-GATCCAACCTCGTCAGTTCACAAC-3' and Rev 5'-AAGGAGACAAAGGTAGGTCCAGC-3', and; 18S, Fw 5'-CCTGCGGCTTAATTTGACTC-3' and Rev 5'-AACTAAGAACGGCCATGCAC-3'. The presence of amplified target DNA was determined by 1.5% agarose gel electrophoresis. Target DNA was extracted (High Pure PCR Product Purification Kit, Roche) and sequenced (Source Biosciences, Dublin). Sequence alignment to the NCBI reference gene (NG\_007033.1) was carried out using ClustalW software (UCD).

### Adoptive transfer of *S. aureus* primed $\gamma\delta$ T-cells

Purified  $\gamma\delta$  T cells were obtained by negative selection of CD3<sup>+</sup> T cells from the peritoneal cavity of *S. aureus*-exposed mice on day 35 (i.e. 21 days after the final exposure to *S. aureus*) using the murine Pan T cell isolation Kit II (Miltenyi Biotec), followed by FACS sorting of  $\gamma\delta$  T cells using antibodies specific to the  $\gamma\delta$ TCR (Beckmann Coulter (Dako) MoFlo Cell Sorter). CD3<sup>+</sup> $\gamma\delta$ <sup>+</sup> or CD3<sup>+</sup> $\gamma\delta$ <sup>-</sup> T cells were injected i.p. to naive mice (1 $\times$ 10<sup>5</sup> cells/ mouse). At 3 h post-transfer, mice received an i.p. injection of *S. aureus* (5 $\times$ 10<sup>8</sup> CFU). At 72 h post-infection, the peritoneum was lavaged and the kidneys, spleens and liver isolated to determine bacterial burden as previously described.

### Statistical analysis

Statistical analyses were performed using GraphPad Prism statistical analysis software. Differences between groups were analysed by unpaired Students *t* test or a one way ANOVA with Tukeys post-test comparison where indicated. *P* < 0.05 was considered significant.

## Results

### $\gamma\delta$ T cells are the major source of IL-17 during *S. aureus*-induced peritonitis

It is widely accepted that IL-17 plays a protective role during *S. aureus* infections (15, 17, 23, 24, 32). An identification of the source of IL-17 at different sites of infection is crucial for the generation of vaccines that will induce protective cellular immunity. Hence, we investigated IL-17 expression in a systemic *S. aureus* infection model induced as a consequence of peritonitis, where mice received a single i.p. injection of *S. aureus* (5 $\times$ 10<sup>8</sup> CFU) or sterile PBS as a control. IL-17A and IL-1 $\beta$  were rapidly produced upon infection, as measured by ELISA on peritoneal lavage fluid at multiple time-points following infection (Fig 1A). Both IL-17A and IL-1 $\beta$  were maximal at 3 h and had decreased to the levels observed in mice administered PBS by 24 h post infection. IL-1 $\alpha$ , IL-18 or IL-17F were not detected in the peritoneal fluid of infected mice (data not shown). IL-17A will therefore be referred to as IL-17 throughout the remainder of this report.

Intracellular cytokine staining of peritoneal exudate cells (PECs) at 3 h post-infection and cultured with brefeldin A, but without PMA and ionomycin stimulation, revealed that IL-17 was exclusively produced by CD3<sup>+</sup> T cells. Moreover,  $\gamma\delta$ <sup>+</sup> T cells were the primary source of IL-17, whereas few CD4<sup>+</sup> and CD8<sup>+</sup> T cells expressed IL-17 at this stage (Fig 1B). IL-17 producing T cells were also detected in the draining mediastinal lymph nodes (MLN) during *S. aureus* infection. Again,  $\gamma\delta$  T cells comprised the major source of IL-17, although significantly fewer cells were cytokine-positive in the lymphoid tissues (Fig 1C). Peritoneal and MLN  $\gamma\delta$  T cells from PBS-injected mice, cultured with Brefeldin A, did not produce IL-17 (Fig 1B-E). In addition, we did not detect any IFN $\gamma$  production by  $\gamma\delta$  T cells isolated from *S. aureus*-infected mice (Supp Fig 1A).



The frequency of IL-17-producing  $\gamma\delta$  T cells was significantly elevated in the peritoneal cavity of *S. aureus*-infected mice as early as 1 h post-infection, compared to naive mice (time 0), and continued to increase up to 3 h post-infection (Fig 1D). By 24 h post-infection, peritoneal  $\gamma\delta$  T cells had ceased to produce IL-17. In some mice, a second wave of IL-17-producing  $\gamma\delta$  T cells appeared in the peritoneal cavity by 72 h post-infection (Fig 1D; Supp Fig 1B), which had subsided by 5 d post-infection (data not shown). This second phase of IL-17<sup>+</sup>  $\gamma\delta$  T cell accumulation was not detected in the MLN where the frequency of these cells was comparable to the PBS-treated controls by 12 h post-infection (Fig 1E). This biphasic course of IL-17 production may represent the recruitment of an alternative subset of  $\gamma\delta$  T cells at this stage of the infection or the expansion of a  $\gamma\delta$  T cell subset resident within the peritoneal cavity.

We and others have previously reported that IL-17 production by  $\gamma\delta$  T cells during *S. aureus* infection is IL-1 $\beta$ -dependent (17, 33). To confirm a role for IL-1 signalling in regulating IL-17 production by  $\gamma\delta$  T cells in the peritoneal cavity, WT and IL-1RI<sup>-/-</sup> mice were infected with *S. aureus* ( $5 \times 10^8$  CFU) via a single i.p. injection. At 3 h post-infection, PECs were isolated and IL-17 production by  $\gamma\delta$  T cells assessed. The total number of  $\gamma\delta$  T cells recruited to the peritoneal cavity was comparable in both *S. aureus* infected WT and IL-1RI<sup>-/-</sup> mice (Supp Fig 1C). However, IL-17 production by these  $\gamma\delta$  T cells was abrogated in the IL-1RI<sup>-/-</sup> mice (Fig 1F, Supp Fig 1D), demonstrating a critical role for IL-1 signalling in the early induction of IL-17 by  $\gamma\delta$  T cells during *S. aureus*-induced peritonitis. The concentrations of secreted IL-23, another cytokine reported to drive innate production of IL-17 by  $\gamma\delta$  T cells (34), were generally low following *S. aureus* challenge and did not significantly differ between WT and IL-1RI<sup>-/-</sup> mice (data not shown).

### Differential recruitment of $\gamma\delta$ T cell subsets over the course of peritoneal infection

Individual  $\gamma\delta$  T cell subsets are often associated with tissue-specific homing and functions (35). In order to characterise the  $\gamma\delta$  T cell subsets responsible for IL-17 production during *S. aureus* induced peritonitis, mice were infected with *S. aureus* ( $5 \times 10^8$  CFU) via i.p. injection and PECs and MLN cells isolated at various time points post-infection. Flow cytometric analysis of PECs 1 h post *S. aureus* infection, revealed that the  $\gamma\delta$  T cell population consisted primarily of V $\gamma$ 1.1<sup>+</sup> T cells and V $\gamma$ 2<sup>+</sup> T cells (Fig 2A & B). By 3 h post-infection a population of V $\gamma$ 1.1<sup>-</sup>V $\gamma$ 2<sup>-</sup> cells had also accumulated in the peritoneal cavity. V $\gamma$ 3<sup>+</sup> cells were almost undetectable in the peritoneal cavity by flow cytometry ( $0.6 \pm 0.2$  V $\gamma$ 3<sup>+</sup> $\gamma\delta$ <sup>+</sup>). Based on previous studies therefore, we hypothesised that peritoneal V $\gamma$ 1.1<sup>-</sup>V $\gamma$ 2<sup>-</sup> cells were in fact V $\gamma$ 4 cells, for which no fluorochrome-conjugated antibody is commercially available. To confirm this we PCR-amplified cDNA from FACS-sorted V $\gamma$ 1.1<sup>-</sup>V $\gamma$ 2<sup>-</sup> PECs and MLN cells. Gel electrophoresis of the amplicons indicates that the V $\gamma$ 1.1<sup>-</sup>V $\gamma$ 2<sup>-</sup> cells were indeed V $\gamma$ 4<sup>+</sup> cells (Supp Fig 1E). Furthermore, the translated sequence of the amplified DNA, excised from the gel, aligned with the V $\gamma$ 4 protein sequence confirming that the V $\gamma$ 1.1<sup>-</sup>V $\gamma$ 2<sup>-</sup> cells were V $\gamma$ 4<sup>+</sup> cells (Supp Fig 1F). These cells are therefore referred to as V $\gamma$ 4 cells in the figure and throughout the remainder of this report.

At 72 h post-infection, the frequency of V $\gamma$ 4<sup>+</sup> cells was significantly increased while the frequency of V $\gamma$ 2<sup>+</sup> cells had significantly decreased in the peritoneal cavity (Fig 2B). The frequency of V $\gamma$ 1.1<sup>+</sup> T cells as a proportion of total  $\gamma\delta$  T cells did not change over the course of acute infection; however there was a significant increase in the absolute numbers of V $\gamma$ 1.1<sup>+</sup> and V $\gamma$ 4<sup>+</sup> T cells at 72 h post infection (Fig 2B). V $\gamma$ 3<sup>+</sup> T cells were not detected in either the peritoneal cavity or the MLN of infected mice (data not shown). These data demonstrate that during the course of *S. aureus* infection in the peritoneal cavity there is a shift in the dominant  $\gamma\delta$  subsets present. Recruitment of V $\gamma$ 4<sup>+</sup> T cells appeared to be specific

to the site of infection as only the V $\gamma$ 1.1<sup>+</sup> population was expanded in the MLN at 72 h post-infection (Fig 2C).

### Prior exposure to *S. aureus* preferentially expands a population of V $\gamma$ 4<sup>+</sup> T cells capable of enhanced IL-17 production during subsequent infection

Our results demonstrate that during the course of *S. aureus* infection there is a shift in the composition of  $\gamma\delta$  T-cells from primarily V $\gamma$ 1.1<sup>+</sup> and V $\gamma$ 2<sup>+</sup> cells in the acute phase of infection to V $\gamma$ 1.1<sup>+</sup> and V $\gamma$ 4<sup>+</sup> cells during later stages of infection. The V $\gamma$ 4<sup>+</sup> cells may represent a primed  $\gamma\delta$  subset capable of responding to subsequent *S. aureus* infection. To test this hypothesis, groups of mice were repeatedly exposed to *S. aureus* ( $5 \times 10^8$  CFU i.p. on d 0, 7 and 14) and allowed to clear the infection ( $<1$  log CFU/ml in peritoneal cavity, 21 d post the final exposure). At this stage, flow cytometric analysis revealed the persistence of a significantly higher number of  $\gamma\delta^+$  T cells, as well as their frequency amongst total CD3<sup>+</sup> T cells, in the peritoneal cavity of previously exposed mice, compared with naïve mice (Fig 3A). A small but significant increase in both the frequency and absolute number of  $\gamma\delta^+$  T cells was also observed in MLN (Fig 3B). The total number of CD3<sup>+</sup> cells did not differ significantly between naïve and prior exposed mice at this point (PEC:  $0.21 \pm 0.04$  vs  $0.34 \pm 0.05 \times 10^6$ , MLN:  $1.55 \pm 0.06$  vs  $1.6 \pm 0.05 \times 10^6$  for naïve vs. previously exposed mice, respectively). Further analysis showed that the composition of the  $\gamma\delta$  T cell population observed 72 h post-infection in the acute model (Fig 2B) was maintained, with a predominantly V $\gamma$ 4<sup>+</sup> T cell profile found in previously exposed, but currently uninfected mice (Fig 3C). Prior exposure to *S. aureus* did not significantly affect the frequency of V $\gamma$ 1.1<sup>+</sup> cells but did result in a significant decrease in the proportions of V $\gamma$ 2<sup>+</sup> cells. Interestingly, a predominance of V $\gamma$ 4<sup>+</sup> T cells was also observed in the MLN at this stage (Fig 3D). Crucially, in the absence of PMA and ionomycin stimulation,  $\gamma\delta$  T cells from previously exposed mice did not produce IL-17 (Fig 3E) and secreted levels of IL-17 protein were undetectable in the peritoneal lavage fluid (data not shown).

Upon recovery (21 d post the final exposure) mice were re-challenged by i.p. injection of *S. aureus* ( $5 \times 10^8$  CFU), as were a group of naïve mice as a control. At specific time points post-challenge, bacterial burden was assessed and PECs and MLN cells isolated to characterise the subsets of  $\gamma\delta$  T cells responsible for IL-17 production. Bacterial clearance from the peritoneal cavity and peripheral organs was significantly greater in mice previously exposed to *S. aureus* compared with naïve mice (Fig 4A and Supp Fig 2A). Enhanced bacterial clearance was associated with increased IL-17 secretion in the peritoneal cavity of previously exposed mice 1 and 3 h post challenge (Fig 4B). Notably, prior exposure to *S. aureus* did not induce the expansion of CD4<sup>+</sup>IL-17<sup>+</sup> (Th17) or CD8<sup>+</sup>IL-17<sup>+</sup> cells in either the peritoneum or the MLN (Fig 4C, Supp Fig 2B). Conversely, elevated peritoneal IL-17 was associated with a significant increase in both the frequency and total number of IL-17-producing  $\gamma\delta$  T cells in the peritoneal cavities of previously exposed mice, compared with naïve mice (Fig 5A & B). This effect was not strain specific because in mice recurrently infected and subsequently re-challenged with an alternative *S. aureus* strain, SH1000 (36, 37), an increase in IL-17 production by  $\gamma\delta$  T cells in the peritoneal cavity was also observed ( $11.1 \pm 1.1\%$  vs.  $31.7 \pm 4.7\%$  IL-17<sup>+</sup> $\gamma\delta^+$  cells respectively,  $n=5$  per group). Analysis of the individual  $\gamma\delta$  T cell subsets revealed an increase in IL-17 expression by all subsets at both 1 and 3 h post-infection, particularly IL-17 production by the V $\gamma$ 4<sup>+</sup> population (Fig 5C, Supp Fig 2C). A similar increase in IL-17 expression by  $\gamma\delta$  T cells was observed in the MLN of previously exposed mice (Supp Fig 3A & B), including a significant increase in the number of IL-17<sup>+</sup>V $\gamma$ 4<sup>+</sup> T cells, 3 h post-infection (Supp Fig 3C). A small but significant increase in the frequency and number of IL-17 producing  $\gamma\delta$  T cells was also detected in the spleens of previously exposed mice 3 hours post infection (Supp Fig 3D).

Expression of the TNF receptor family molecule CD27 has been reported to distinguish IFN $\gamma$ -producing (CD27<sup>+</sup>) from IL-17-producing (CD27<sup>-</sup>)  $\gamma\delta$  T cells (38). CD27 expression was initially thought to differentiate antigen-experienced (CD27<sup>+</sup>)  $\gamma\delta$  T cells from antigen-naïve  $\gamma\delta$  T-cells (39, 40). However, a recent study identified a population of memory  $\gamma\delta$  T cells that expressed high levels of the effector memory marker CD44 and yet were CD27<sup>-</sup> and produced high levels of IL-17 (29). In the present study, IL-17 producing  $\gamma\delta$  T cells present in the peritoneal cavity of *S. aureus*-infected naïve and previously exposed mice were also found to express a CD27<sup>-</sup>CD44<sup>hi</sup> phenotype (Fig 5C & D). Taken together, these results suggest that exposure to *S. aureus* results in the generation of a population of “primed”  $\gamma\delta$  T cells, predominantly of the V $\gamma$ 4 subset, that are capable of enhanced IL-17 production and associated bacterial clearance upon subsequent infection with the organism.

### Enhanced IL-17 expression by $\gamma\delta$ T cells upon secondary exposure to *S. aureus* is not a result of increased innate cytokine signalling

During *S. aureus* infection in naïve mice, IL-17 production by peritoneal  $\gamma\delta$  T cells was critically dependent upon IL-1 signalling (Fig 1A & F). Hence, we investigated the effects of prior exposure to *S. aureus* on innate cytokine production in the peritoneal cavity. Despite significantly enhanced IL-17 secretion upon re-infection of previously exposed mice, compared with infection of naïve mice (Fig 4B), no difference in IL-1 $\beta$  or IL-23 secretion was detected (Supp Fig 4). IL-1 $\alpha$  and IL-18, which can also stimulate IL-17 production by  $\gamma\delta$  T cells (41), were undetectable in the peritoneal cavities of either naïve or prior exposed mice following *S. aureus* infection (data not shown). Microbial colonisation has been shown to increase the expression of IL-1RI on the surface of IL-17-producing  $\gamma\delta$  T cells, leading to increased IL-17 production in response to IL-1 $\beta$  signalling (42). However, we did not detect any difference in the mean fluorescence intensity (MFI) of IL-1RI expression on peritoneal IL-17<sup>+</sup>  $\gamma\delta$  T cells between previously exposed and naïve mice at 1 and 3 h post-challenge (Fig 6A). A similar pattern was observed in the MLN (data not shown). These findings suggest an alternative mechanism for the enhanced IL-17 expression by *S. aureus* primed  $\gamma\delta$  T cells, compared to the IL-1-dependent expression observed during acute infection.

To further investigate the mechanisms responsible for enhanced IL-17 production by  $\gamma\delta$  T cells following prior exposure to *S. aureus* we cultured  $\gamma\delta$  T cells from naïve or previously exposed mice that were infection free (21 d post final exposure to *S. aureus*) with peritoneal macrophages infected with *S. aureus* (MOI 1:10). Following 18 h of culture, IL-17 expression by  $\gamma\delta$  T cells was assessed by flow cytometric analysis and IL-17 secretion into the supernatants measured by ELISA. When compared with  $\gamma\delta$  T cells from naïve mice,  $\gamma\delta$  T cells isolated from mice previously exposed to *S. aureus* produced significantly more IL-17 when co-cultured with *S. aureus* infected macrophages (Fig 6B & C). *S. aureus* primed  $\gamma\delta$  T cells appeared to be exclusively IL-17 producing as no IFN $\gamma$  production was detected in the culture supernatants (data not shown). Moreover, macrophages stimulated with *S. aureus* alone, in the absence of  $\gamma\delta$  T cells, did not produce any IL-17 (data not shown). To determine the role of innate cytokines in the secondary response of *S. aureus*-primed  $\gamma\delta$  T cells, blocking antibodies to both IL-1RI and the IL-23R were added to the co-cultures. Blockade of IL-1RI at the higher concentration of antibody (4  $\mu$ g/ml) resulted in complete abrogation of IL-17 secretion by  $\gamma\delta$  T cells from naïve mice (Fig 6B & C). Conversely, blockade of IL-1RI, using either concentration of antibody, only partially reduced IL-17 production by previously exposed  $\gamma\delta$  T cells, and this reduction was not significant (Fig 6B & C). IL-23R blockade had no effect on IL-17 production by either naïve or prior-exposed  $\gamma\delta$  T cells (Fig 6B). Taken together, our *in vitro* and *in vivo* data demonstrate differential requirements for innate IL-1 signalling in the IL-17-mediated response to *S. aureus* infection by primed  $\gamma\delta$  T cells and those from naïve mice.



## Adoptive transfer of *S. aureus*-primed $\gamma\delta$ T cells protects against subsequent infection

Our results demonstrate an accumulation of V $\gamma$ 4 T cells in the peritoneal cavity as a result of *S. aureus* exposure. Upon re-exposure to the bacterium, these V $\gamma$ 4 cells contribute substantially to the augmented IL-17 response observed in previously exposed mice, which was associated with increased bacterial clearance (Fig 4A & Supp Fig 2). To confirm a direct role for primed  $\gamma\delta$  T cells in protection against *S. aureus* infection, we transferred  $1 \times 10^5$  *S. aureus*-primed  $\gamma\delta$  T cells, purified from mice previously exposed to *S. aureus*, 21 d following the final exposure to *S. aureus* (i.e. d 35), to naïve syngeneic hosts. Prior to transfer, purified *S. aureus*-exposed  $\gamma\delta$  T cells primarily consisted of the V $\gamma$ 4 subset (> 90% V $\gamma$ 4<sup>+</sup>, data not shown).  $1 \times 10^5$   $\gamma\delta$  T cell-depleted CD3<sup>+</sup> T cells (i.e. CD3<sup>+</sup> $\gamma\delta$ <sup>-</sup> cells) isolated from the same mice previously exposed to *S. aureus* were transferred to a separate group of naïve mice as a control. 3 h post-transfer, mice were challenged by i.p. injection of *S. aureus* ( $5 \times 10^8$  CFU). At 72 h post-infection, the bacterial burden at the local site of infection was assessed, as well as dissemination of the bacteria to peripheral sites.

Transfer of *S. aureus*-primed  $\gamma\delta$  T cells significantly reduced bacterial burden in the peritoneal cavity (the site of infection), compared to mice that received primed CD3<sup>+</sup> T cells depleted of  $\gamma\delta$  T cells (Fig. 7). Dissemination of bacteria to the kidneys and liver was also reduced in recipients of *S. aureus*-primed  $\gamma\delta$  T cells, compared with controls. These results demonstrate an important protective role for *S. aureus*-primed  $\gamma\delta$  T cells, specifically V $\gamma$ 4<sup>+</sup> cells, which display enhanced IL-17 production upon subsequent exposure to the bacterium.

## Discussion

Our study demonstrates for the first time that exposure to *S. aureus* can prime a subset of IL-17-producing  $\gamma\delta$  T cells that are capable of protecting against a subsequent staphylococcal infection. Previous studies have established that IL-17 plays an important role in immune protection against *S. aureus* infection both in humans (23, 24) and animal models (15, 32), with  $\gamma\delta$  T cells identified as the primary source of innate IL-17 in models of acute *S. aureus*-induced pneumonia, cutaneous infection and surgical site infection (14, 15, 17). In this study, we have identified a population of *S. aureus*-primed  $\gamma\delta$  T cells that exhibit a more rapid expansion and clearance of infection than in the primary response and, in a manner similar to the memory response of conventional  $\alpha\beta$  T-cells, are capable of conferring protection against *S. aureus* upon transfer to naïve mice. Furthermore, we demonstrate the redundancy of IL-1 signalling in the IL-17-mediated secondary response of memory  $\gamma\delta$  T cells to *S. aureus* infection, compared to its critical requirement by  $\gamma\delta$  T-cells in naïve mice. These findings reveal that  $\gamma\delta$  T cells are an important source of IL-17 in adaptive immunity to *S. aureus* and indicate that targeting the induction of non-traditional lymphocytes such as specific subsets of  $\gamma\delta$  T cells that secrete IL-17 - one of the few known correlates of anti-staphylococcal immunity - could significantly benefit future anti-*S. aureus* vaccine design.

Employing a model of *S. aureus*-induced peritonitis, we demonstrate the rapid recruitment of IL-17-producing  $\gamma\delta$  T cells to the peritoneal cavity, accumulating in significant numbers as early as 1 h post-infection. IL-17-producing  $\gamma\delta$  T cells were also detected in the MLN, the primary draining lymph node for the peritoneal cavity (43, 44). The rapid response to *S. aureus* infection is characteristic of the innate-like function of  $\gamma\delta$  T cells. However, we also observed the  $\gamma\delta$  T cell response adapt to *S. aureus* infection over time. At 1 h post-infection V $\gamma$ 1.1<sup>+</sup> and V $\gamma$ 2<sup>+</sup> cells comprised the majority of  $\gamma\delta$  T cells recruited to the site of infection, however by 72 h, a large population of V $\gamma$ 4<sup>+</sup> cells had accumulated in the peritoneal cavity. Moreover, in a novel model of recurrent peritonitis, we found that this composition of  $\gamma\delta$  T cells was maintained up to 3 wk after final exposure to the bacterium.

Significantly, these V $\gamma$ 4<sup>+</sup> T cells were maintained in the peritoneal cavity and the MLN in the absence of bacteria.

Differential expression of V $\gamma$  and/or V $\delta$  chains are used to categorise  $\gamma\delta$  T cell subsets, which often display tissue-specific homing and distinct cytokine profiles (35). V $\gamma$ 1.1<sup>+</sup> cells have been reported to produce IL-17 in aspergillus-infected mice with chronic granulomatous disease (45), but are traditionally thought to be more anti-inflammatory with depletion studies indicating increased inflammatory responses to infection with *L. monocytogenes* (46) and coxsackievirus B3 infection (47). Conversely, V $\gamma$ 2<sup>+</sup> cell depletion led to reduced inflammatory responses in both of these models (46, 47). Moreover, these same pro-inflammatory V $\gamma$ 2<sup>+</sup> cells appear to be pathogenic in autoimmune models and were identified as the predominant  $\gamma\delta$  T cell subset infiltrating the CNS of mice with experimental autoimmune encephalomyelitis and the joints of mice with collagen-induced arthritis (34, 48). V $\gamma$ 4<sup>+</sup> cells contribute to the clearance of bacterial infections such as *L. monocytogenes* (49), *B. subtilis* (50) and *E. coli*, where IL-17-producing V $\gamma$ 4<sup>+</sup>V $\delta$ 1<sup>+</sup> T cells control the early recruitment of neutrophils (20, 51, 52).

Human  $\gamma\delta$  T cells, like  $\alpha\beta$  T cells, are capable of antigen recall and can recognise a bacterial antigen upon re-exposure to the organism, allowing for a more rapid and efficient immune response (53-56). In non-human primate models, phosphoantigen specific V $\gamma$ 2<sup>+</sup>V $\delta$ 2<sup>+</sup>  $\gamma\delta$  T cells have been shown to exhibit antigen specific responses during mycobacterial infection (54). V $\gamma$ 2<sup>+</sup>V $\delta$ 2<sup>+</sup> cells, the predominant subset present in human blood, recognise metabolites from isoprenoid synthesis. One such phosphoantigen, hydroxymethyl-but-2-enyl-pyrophosphate (HMBPP) is a potent stimulator of V $\gamma$ 2<sup>+</sup>V $\delta$ 2<sup>+</sup> cells (27) and is produced during infections with *E. coli*, *L. monocytogenes* and *M. tuberculosis* (57, 58). Although HMBPP is not produced by *S. aureus*, transfer of HMBPP activated  $\gamma\delta$  T cells was protective against *S. aureus* infection in SCID mice (28).

Murine  $\gamma\delta$  T cells resembling adaptive  $\alpha\beta$  T cells and bearing the characteristics of pathogen-specific human  $\gamma\delta$  T cells have recently been identified in a model of *Listeria monocytogenes* infection (29). In that study, a population of CD27<sup>-</sup>CD44<sup>+</sup> memory  $\gamma\delta$  T cells were induced in response to a secondary infection via the oral mucosal route, but not the systemic route, suggesting that mucosal priming plays a key role in the expansion of memory  $\gamma\delta$  T cells in that model. Critically, this was associated with enhanced protection against secondary infection with listeria but not *Salmonella typhimurium*. The authors further demonstrated that the memory  $\gamma\delta$  T cell population comprised predominantly of V $\gamma$ 4<sup>+</sup>V $\delta$ 1<sup>+</sup> cells. These cells were retained long term and produced elevated levels of IL-17 and IFN $\gamma$  upon secondary oral infection, largely in an MHC class II-dependent manner. Similarly, Roark *et al.* demonstrated high levels of CD44 expression on a population of effector memory V $\gamma$ 4<sup>+</sup>V $\delta$ 1<sup>+</sup> cells (59). These studies suggest that pathogen-specific murine  $\gamma\delta$  T cells are capable of generating protective memory.

In the current study, *S. aureus*-primed CD27<sup>-</sup>V $\gamma$ 4<sup>+</sup>  $\gamma\delta$  T cells were also CD44<sup>hi</sup> and displayed enhanced cytokine production upon re-exposure to *S. aureus* both *in vivo* and *in vitro*, reflecting an effector-memory phenotype. In our *S. aureus*-induced peritonitis model however, CD27<sup>-</sup> V $\gamma$ 4 T cells secreted only IL-17, and not IFN $\gamma$  as reported by Sheridan *et al.* (29). This polarised cytokine expression profile was evident in both the primary infection model and upon re-challenge and is consistent with the reported thymic imprinting of  $\gamma\delta$  T cells, which was found to be stable even during infection with *Plasmodium berghei* (38).

Consistent with previous studies (15, 17), we found that IL-1 $\beta$  was indispensable for IL-17 production by  $\gamma\delta$  T cells during *S. aureus*-induced peritonitis in naïve mice. Similarly, IL-1R-blockade with a monoclonal antibody abrogated IL-17 production by  $\gamma\delta$  T cells from

naïve mice, in co-culture studies with *S. aureus*-infected macrophages *in vitro*. In contrast, *S. aureus*-primed  $\gamma\delta$  T cell secretion of IL-17, which was significantly elevated compared to that produced by  $\gamma\delta$  T cells from naïve mice, was independent of IL-1R signalling. Moreover, IL-1R expression on peritoneal  $\gamma\delta$  T cells did not differ from that seen on  $\gamma\delta$  T cells encountering *S. aureus* for the first time. As IL-23R signalling was not critical for IL-17 expression by  $\gamma\delta$  T cells in naïve or prior-exposed mice, and IL-1 $\alpha$  and IL-18 were undetectable in the peritoneal cavity of both groups of mice, we hypothesise that these primed  $\gamma\delta$  T cells are in fact memory cells capable of rapid recall of staphylococcal antigens upon re-exposure. Interestingly, preliminary experiments by our group indicate that inhibition of MHC II signalling interferes with the ability of memory  $\gamma\delta$  T cells to respond to antigen stimulation (Murphy and McLoughlin, unpublished data). This is consistent with the recent data published by Sheridan *et al.* (29), and further investigation into these mechanisms is warranted.

A memory response specifically by primed  $\gamma\delta$  T cells, and not CD4 or CD8 T cells (which did not produce IL-17 upon re-exposure to *S. aureus*), was confirmed by the demonstration that adoptive transfer of  $\gamma\delta$  T cells, but not CD3<sup>+</sup> $\gamma\delta$ <sup>-</sup> T cells, from the peritoneum of mice infected with *S. aureus* conferred protection to naïve mice against challenge with *S. aureus*. The enhanced clearance of bacteria from the peritoneum also resulted in reduced dissemination to peripheral sites, including the kidneys and liver of  $\gamma\delta$  T cell recipient mice.

$\gamma\delta$  T cells occupy a unique niche in the immune system due to their pleiotropic effector functions, their capacity to recognise distinct phosphoantigens and their preferential localisation at mucosal sites, all of which support a prominent role for  $\gamma\delta$  T cells in antimicrobial immunity. Indeed, in a rare variant of SCID that results in decreased  $\alpha\beta$  T cells and increased numbers of  $\gamma\delta$  T cells, patients display normal antibody production and can respond effectively to vaccinations against diphtheria (60). This highlights the capacity of  $\gamma\delta$  T cell recall responses even in the absence of conventional  $\alpha\beta$  T cell help. Moreover, vaccines targeting  $\gamma\delta$  T cells have shown efficacy in West Nile virus infection, where administration of  $\alpha$ -glucans known to promote  $\gamma\delta$  T cell expansion resulted in attenuated viremia and mortality following lethal infection (61).  $\gamma\delta$  T cells are also currently being targeted in novel anti-cancer vaccines. In these studies, autologous V $\gamma$ 9<sup>+</sup>V $\delta$ 2<sup>+</sup> cells were activated and expanded by phosphoantigen stimulation *in vitro* and then infused back into the patients where they have been found to kill transformed cells (62).

This study significantly advances our understanding of the cellular immune response to *S. aureus*, identifying a subset of IL-17 producing  $\gamma\delta$  T cells that undergo rapid expansion following infection. Furthermore these IL-17-secreting memory  $\gamma\delta$  T cells confer protective immunity following re-exposure to *S. aureus*. Future studies are now required to identify the specific staphylococcal antigens recognized by  $\gamma\delta$  T cells. *S. aureus* is of course a human pathogen and there are differences between human and mouse  $\gamma\delta$  T cells. Therefore, studies in humans will be necessary to validate these findings from murine models. If IL-17-secreting memory  $\gamma\delta$  T cells are induced and found to have a role in anti-staphylococcal immunity in humans, these cells represent a potentially important and novel target for the rational design of future vaccines against *S. aureus*.

## Supplementary Material

Refer to Web version on PubMed Central for supplementary material.

## Acknowledgments

We thank Barry Moran for assistance with cell sorting.

This project was funded by a Wellcome Trust RCDF (WT086515MA) and a Science Foundation Ireland Investigator Project Grant (12/IP/1532) to R.McL.

## Abbreviations used in this paper

PEC	Peritoneal Exudate Cells
MLN	Mediastinal Lymph nodes

## References

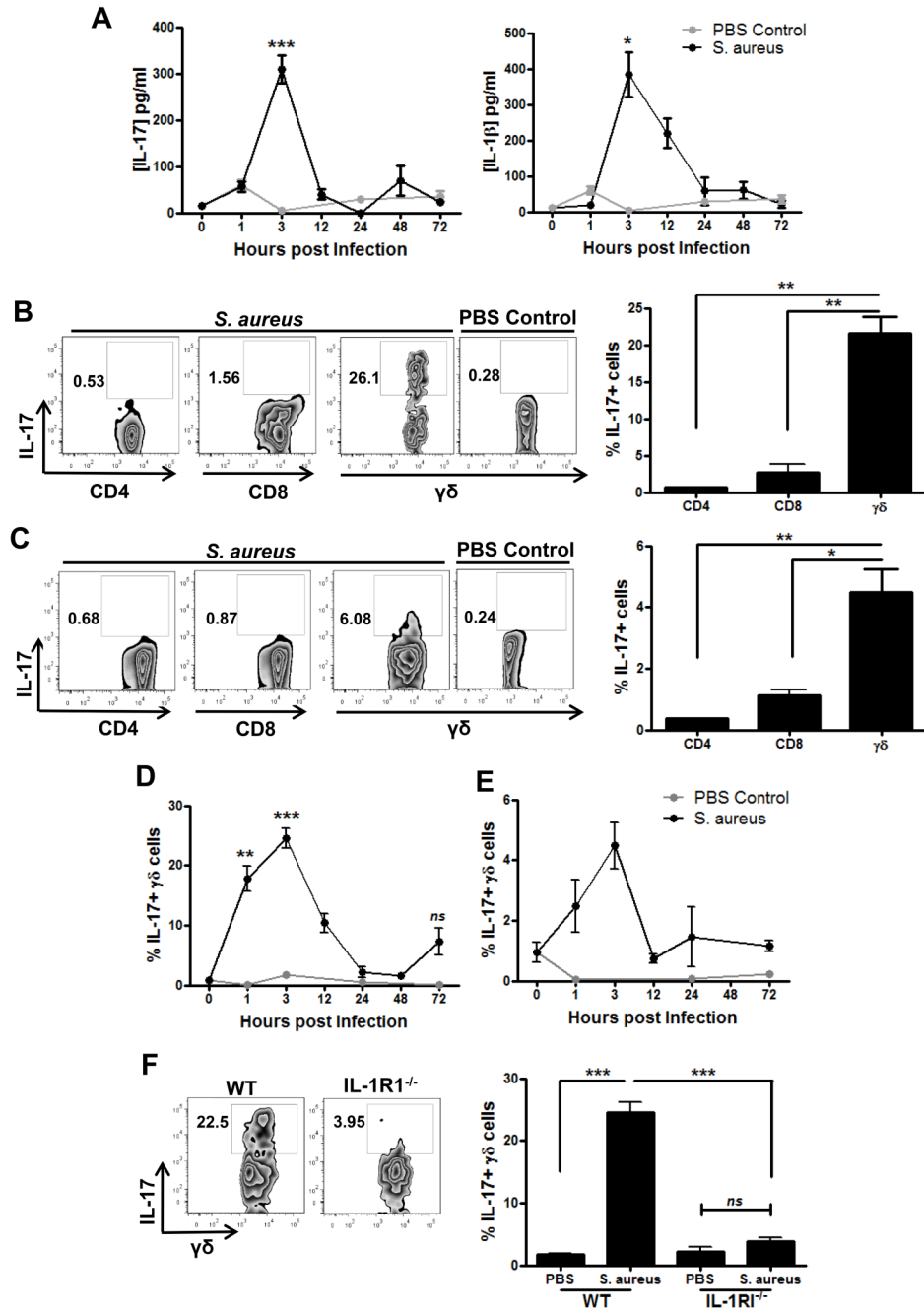
1. Peacock SJ, de Silva I, Lowy FD. What determines nasal carriage of *Staphylococcus aureus*? *Trends Microbiol.* 2001; 9:605–610. [PubMed: 11728874]
2. van Belkum A, Verkaik NJ, de Vogel CP, Boelens HA, Verveer J, Nouwen JL, Verbrugh HA, Wertheim HF. Reclassification of *Staphylococcus aureus* nasal carriage types. *The Journal of infectious diseases.* 2009; 199:1820–1826. [PubMed: 19419332]
3. Miller LG, Eells SJ, Taylor AR, David MZ, Ortiz N, Zychowski D, Kumar N, Cruz D, Boyle-Vavra S, Daum RS. *Staphylococcus aureus* colonization among household contacts of patients with skin infections: risk factors, strain discordance, and complex ecology. *Clin Infect Dis.* 2012; 54:1523–1535. [PubMed: 22474221]
4. Lowy FD. *Staphylococcus aureus* infections. *N Engl J Med.* 1998; 339:520–532. [PubMed: 9709046]
5. Deleo FR, Otto M, Kreiswirth BN, Chambers HF. Community-associated methicillin-resistant *Staphylococcus aureus*. *Lancet.* 2010; 375:1557–1568. [PubMed: 20206987]
6. Hiramatsu K. Vancomycin-resistant *Staphylococcus aureus*: a new model of antibiotic resistance. *Lancet Infect Dis.* 2001; 1:147–155. [PubMed: 11871491]
7. Sánchez García M, De la Torre MA, Morales G, Peláez B, Tolón MJ, Domingo S, Candel FJ, Andrade R, Arribi A, García N, Martínez Sagasti F, Ferreres J, Picazo J. Clinical outbreak of linezolid-resistant *Staphylococcus aureus* in an intensive care unit. *JAMA.* 2010; 303:2260–2264. [PubMed: 20530779]
8. Marty FM, Yeh WW, Wennersten CB, Venkataraman L, Albano E, Alyea EP, Gold HS, Baden LR, Pillai SK. Emergence of a clinical daptomycin-resistant *Staphylococcus aureus* isolate during treatment of methicillin-resistant *Staphylococcus aureus* bacteremia and osteomyelitis. *J Clin Microbiol.* 2006; 44:595–597. [PubMed: 16455920]
9. Spellberg B, Daum R. Development of a vaccine against *Staphylococcus aureus*. *Semin Immunopathol.* 2012; 34:335–348. [PubMed: 22080194]
10. Bagnoli F, Bertholet S, Grandi G. Inferring reasons for the failure of *Staphylococcus aureus* vaccines in clinical trials. *Front Cell Infect Microbiol.* 2012; 2:16. [PubMed: 22919608]
11. Lin L, Ibrahim AS, Xu X, Farber JM, Avanesian V, Baquir B, Fu Y, French SW, Edwards JE, Spellberg B. Th1-Th17 cells mediate protective adaptive immunity against *Staphylococcus aureus* and *Candida albicans* infection in mice. *PLoS Pathog.* 2009; 5:e1000703. [PubMed: 20041174]
12. Misstear K, McNeela EA, Murphy AG, Geoghegan JA, O’Keeffe KM, Fox J, Chan K, Heuking S, Collin N, Foster TJ, McLoughlin RM, Lavelle EC. Targeted nasal vaccination provides antibody independent protection against *Staphylococcus aureus*. *The Journal of infectious diseases.* 2013
13. Ross PJ, Sutton CE, Higgins S, Allen AC, Walsh K, Misiak A, Lavelle EC, McLoughlin RM, Mills KH. Relative Contribution of Th1 and Th17 Cells in Adaptive Immunity to *Bordetella pertussis*: Towards the Rational Design of an Improved Acellular Pertussis Vaccine. *PLoS Pathog.* 2013; 9:e1003264. [PubMed: 23592988]
14. Cheng P, Liu T, Zhou WY, Zhuang Y, Peng LS, Zhang JY, Mao XH, Guo G, Shi Y, Zou QM. Role of gamma-delta T cells in host response against *Staphylococcus aureus*-induced pneumonia. *BMC Immunol.* 2012; 13:38. [PubMed: 22776294]
15. Cho JS, Pietras EM, Garcia NC, Ramos RI, Farzam DM, Monroe HR, Magorien JE, Blauvelt A, Kolls JK, Cheung AL, Cheng G, Modlin RL, Miller LS. IL-17 is essential for host defense against cutaneous *Staphylococcus aureus* infection in mice. *J Clin Invest.* 2010; 120:1762–1773. [PubMed: 20364087]

16. Molne L, Corthay A, Holmdahl R, Tarkowski A. Role of gamma/delta T cell receptor-expressing lymphocytes in cutaneous infection caused by *Staphylococcus aureus*. *Clin Exp Immunol*. 2003; 132:209–215. [PubMed: 12699407]
17. Maher BM, Mulcahy ME, Murphy AG, Wilk M, O’Keeffe KM, Geoghegan JA, Lavelle EC, McLoughlin RM. Nlrp-3 driven IL-17 production by  $\gamma\delta$ T-cells controls infection outcomes during *Staphylococcus aureus* surgical site infection. *Infect Immun*. 2013
18. Ye P, Rodriguez FH, Kanaly S, Stocking KL, Schurr J, Schwarzenberger P, Oliver P, Huang W, Zhang P, Zhang J, Shellito JE, Bagby GJ, Nelson S, Charrier K, Peschon JJ, Kolls JK. Requirement of interleukin 17 receptor signaling for lung CXC chemokine and granulocyte colony-stimulating factor expression, neutrophil recruitment, and host defense. *J Exp Med*. 2001; 194:519–527. [PubMed: 11514607]
19. Ye P, Garvey PB, Zhang P, Nelson S, Bagby G, Summer WR, Schwarzenberger P, Shellito JE, Kolls JK. Interleukin-17 and lung host defense against *Klebsiella pneumoniae* infection. *Am J Respir Cell Mol Biol*. 2001; 25:335–340. [PubMed: 11588011]
20. Shibata K, Yamada H, Hara H, Kishihara K, Yoshikai Y. Resident Vdelta1+ gammadelta T cells control early infiltration of neutrophils after *Escherichia coli* infection via IL-17 production. *J Immunol*. 2007; 178:4466–4472. [PubMed: 17372004]
21. Hamada S, Umemura M, Shiono T, Tanaka K, Yahagi A, Begum MD, Oshiro K, Okamoto Y, Watanabe H, Kawakami K, Roark C, Born WK, O’Brien R, Ikuta K, Ishikawa H, Nakae S, Iwakura Y, Ohta T, Matsuzaki G. IL-17A produced by gammadelta T cells plays a critical role in innate immunity against *Listeria monocytogenes* infection in the liver. *J Immunol*. 2008; 181:3456–3463. [PubMed: 18714018]
22. Okamoto Yoshida Y, Umemura M, Yahagi A, O’Brien RL, Ikuta K, Kishihara K, Hara H, Nakae S, Iwakura Y, Matsuzaki G. Essential role of IL-17A in the formation of a mycobacterial infection-induced granuloma in the lung. *J Immunol*. 2010; 184:4414–4422. [PubMed: 20212094]
23. Ma CS, Chew GY, Simpson N, Priyadarshi A, Wong M, Grimbacher B, Fulcher DA, Tangye SG, Cook MC. Deficiency of Th17 cells in hyper IgE syndrome due to mutations in STAT3. *J Exp Med*. 2008; 205:1551–1557. [PubMed: 18591410]
24. Milner JD, Brenchley JM, Laurence A, Freeman AF, Hill BJ, Elias KM, Kanno Y, Spalding C, Elloumi HZ, Paulson ML, Davis J, Hsu A, Asher AI, O’Shea J, Holland SM, Paul WE, Douek DC. Impaired T(H)17 cell differentiation in subjects with autosomal dominant hyper-IgE syndrome. *Nature*. 2008; 452:773–776. [PubMed: 18337720]
25. Ong PY, Ohtake T, Brandt C, Strickland I, Boguniewicz M, Ganz T, Gallo RL, Leung DY. Endogenous antimicrobial peptides and skin infections in atopic dermatitis. *N Engl J Med*. 2002; 347:1151–1160. [PubMed: 12374875]
26. Guttman-Yassky E, Lowes MA, Fuentes-Duculan J, Zaba LC, Cardinale I, Nograles KE, Khatcherian A, Novitskaya I, Carucci JA, Bergman R, Krueger JG. Low expression of the IL-23/Th17 pathway in atopic dermatitis compared to psoriasis. *J Immunol*. 2008; 181:7420–7427. [PubMed: 18981165]
27. Morita CT, Jin C, Sarikonda G, Wang H. Nonpeptide antigens, presentation mechanisms, and immunological memory of human Vgamma2Vdelta2 T cells: discriminating friend from foe through the recognition of prenyl pyrophosphate antigens. *Immunol Rev*. 2007; 215:59–76. [PubMed: 17291279]
28. Wang L, Kamath A, Das H, Li L, Bukowski JF. Antibacterial effect of human V gamma 2V delta 2 T cells in vivo. *J Clin Invest*. 2001; 108:1349–1357. [PubMed: 11696580]
29. Sheridan BS, Romagnoli PA, Pham QM, Fu HH, Alonzo F, Schubert WD, Freitag NE, Lefrançois L.  $\gamma\delta$  T Cells Exhibit Multifunctional and Protective Memory in Intestinal Tissues. *Immunity*. 2013; 39:184–195. [PubMed: 23890071]
30. Tzianabos AO, Wang JY, Lee JC. Structural rationale for the modulation of abscess formation by *Staphylococcus aureus* capsular polysaccharides. *Proc Natl Acad Sci U S A*. 2001; 98:9365–9370. [PubMed: 11470905]
31. Garman RD, Doherty PJ, Raulet DH. Diversity, rearrangement, and expression of murine T cell gamma genes. *Cell*. 1986; 45:733–742. [PubMed: 3486721]



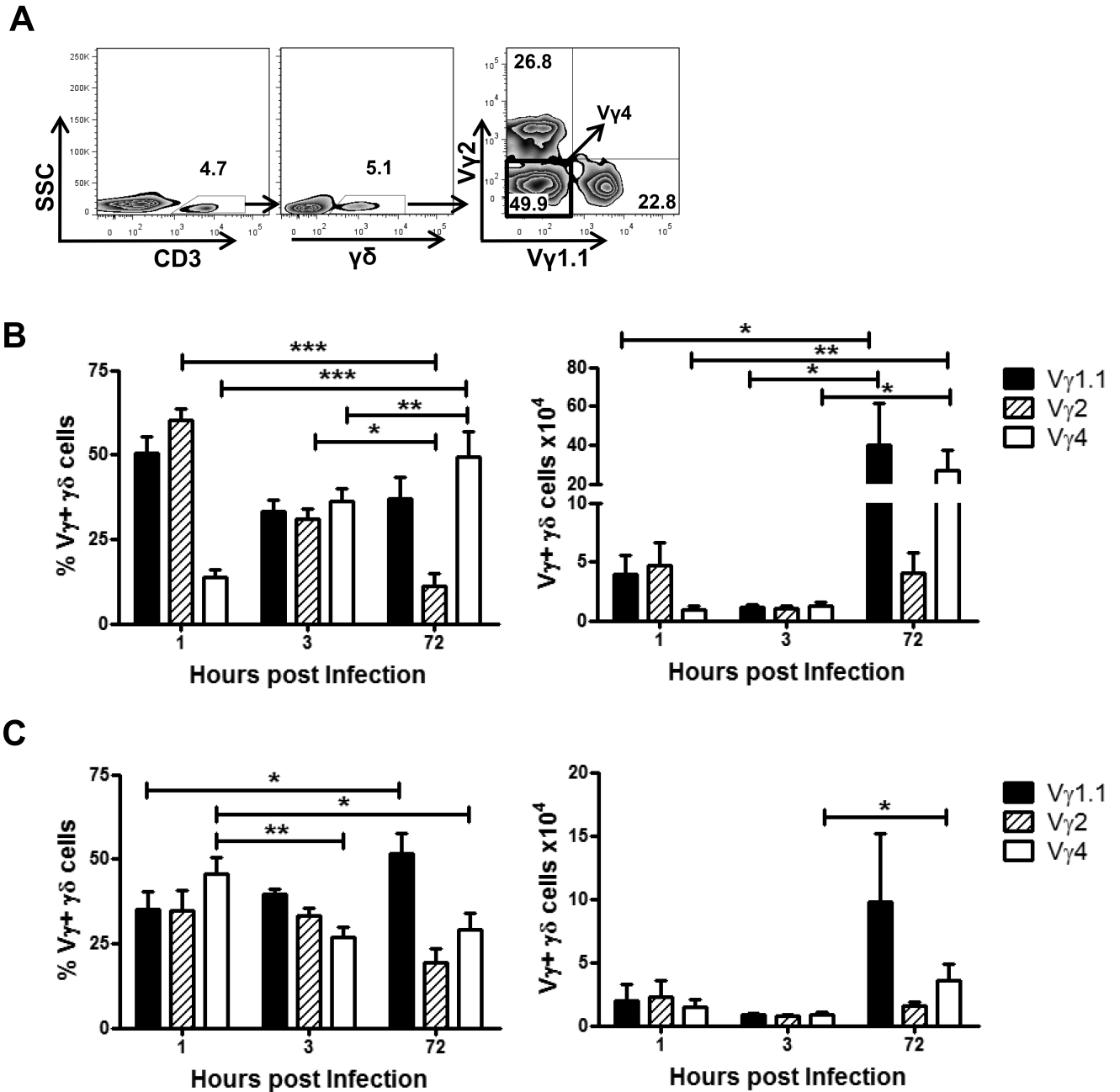
32. Ishigame H, Kakuta S, Nagai T, Kadoki M, Nambu A, Komiyama Y, Fujikado N, Tanahashi Y, Akitsu A, Kotaki H, Sudo K, Nakae S, Sasakawa C, Iwakura Y. Differential roles of interleukin-17A and -17F in host defense against mucoc epithelial bacterial infection and allergic responses. *Immunity*. 2009; 30:108–119. [PubMed: 19144317]
33. Cho JS, Guo Y, Ramos RI, Hebroni F, Plaisier SB, Xuan C, Granick JL, Matsushima H, Takashima A, Iwakura Y, Cheung AL, Cheng G, Lee DJ, Simon SI, Miller LS. Neutrophil-derived IL-1 $\beta$  is sufficient for abscess formation in immunity against *Staphylococcus aureus* in mice. *PLoS pathogens*. 2012; 8:e1003047. [PubMed: 23209417]
34. Sutton CE, Lalor SJ, Sweeney CM, Brereton CF, Lavelle EC, Mills KH. Interleukin-1 and IL-23 induce innate IL-17 production from gammadelta T cells, amplifying Th17 responses and autoimmunity. *Immunity*. 2009; 31:331–341. [PubMed: 19682929]
35. O'Brien RL, Born WK. gammadelta T cell subsets: a link between TCR and function? *Semin Immunol*. 2010; 22:193–198. [PubMed: 20451408]
36. Wann ER, Dassy B, Fournier JM, Foster TJ. Genetic analysis of the cap5 locus of *Staphylococcus aureus*. *FEMS Microbiol Lett*. 1999; 170:97–103. [PubMed: 9919657]
37. Horsburgh MJ, Aish JL, White IJ, Shaw L, Lithgow JK, Foster SJ. sigmaB modulates virulence determinant expression and stress resistance: characterization of a functional rsbU strain derived from *Staphylococcus aureus* 8325-4. *J Bacteriol*. 2002; 184:5457–5467. [PubMed: 12218034]
38. Ribot JC, deBarros A, Pang DJ, Neves JF, Peperzak V, Roberts SJ, Girardi M, Borst J, Hayday AC, Pennington DJ, Silva-Santos B. CD27 is a thymic determinant of the balance between interferon-gamma- and interleukin 17-producing gammadelta T cell subsets. *Nat Immunol*. 2009; 10:427–436. [PubMed: 19270712]
39. Ribot JC, Chaves-Ferreira M, d'Orey F, Wencker M, Gonçalves-Sousa N, Decalf J, Simas JP, Hayday AC, Silva-Santos B. Cutting edge: adaptive versus innate receptor signals selectively control the pool sizes of murine IFN- $\gamma$ - or IL-17-producing  $\gamma\delta$  T cells upon infection. *J Immunol*. 2010; 185:6421–6425. [PubMed: 21037088]
40. Jensen KD, Su X, Shin S, Li L, Youssef S, Yamasaki S, Steinman L, Saito T, Locksley RM, Davis MM, Baumgarth N, Chien YH. Thymic selection determines gammadelta T cell effector fate: antigen-naive cells make interleukin-17 and antigen-experienced cells make interferon gamma. *Immunity*. 2008; 29:90–100. [PubMed: 18585064]
41. Lalor SJ, Dungan LS, Sutton CE, Basdeo SA, Fletcher JM, Mills KH. Caspase-1-processed cytokines IL-1beta and IL-18 promote IL-17 production by gammadelta and CD4 T cells that mediate autoimmunity. *J Immunol*. 2011; 186:5738–5748. [PubMed: 21471445]
42. Duan J, Chung H, Troy E, Kasper DL. Microbial colonization drives expansion of IL-1 receptor 1-expressing and IL-17-producing gamma/delta T cells. *Cell Host Microbe*. 2010; 7:140–150. [PubMed: 20159619]
43. Parungo CP, Soybel DI, Colson YL, Kim SW, Ohnishi S, DeGrand AM, Laurence RG, Soltesz EG, Chen FY, Cohn LH, Bawendi MG, Frangioni JV. Lymphatic drainage of the peritoneal space: a pattern dependent on bowel lymphatics. *Ann Surg Oncol*. 2007; 14:286–298. [PubMed: 17096058]
44. Fritz DL, Waag DM. Transdiaphragmatic lymphatic transport of intraperitoneally administered marker in hamsters. *Lab Anim Sci*. 1999; 49:522–529. [PubMed: 10551454]
45. Romani L, Fallarino F, De Luca A, Montagnoli C, D'Angelo C, Zelante T, Vacca C, Bistoni F, Fioretti MC, Grohmann U, Segal BH, Puccetti P. Defective tryptophan catabolism underlies inflammation in mouse chronic granulomatous disease. *Nature*. 2008; 451:211–215. [PubMed: 18185592]
46. O'Brien RL, Yin X, Huber SA, Ikuta K, Born WK. Depletion of a gamma delta T cell subset can increase host resistance to a bacterial infection. *J Immunol*. 2000; 165:6472–6479. [PubMed: 11086087]
47. Huber SA, Graveline D, Newell MK, Born WK, O'Brien RL. V gamma 1+ T cells suppress and V gamma 4+ T cells promote susceptibility to coxsackievirus B3-induced myocarditis in mice. *J Immunol*. 2000; 165:4174–4181. [PubMed: 11035049]

48. Roark CL, French JD, Taylor MA, Bendele AM, Born WK, O'Brien RL. Exacerbation of collagen-induced arthritis by oligoclonal, IL-17-producing gamma delta T cells. *J Immunol.* 2007; 179:5576–5583. [PubMed: 17911645]
49. Hamada S, Umemura M, Shiono T, Hara H, Kishihara K, Tanaka K, Mayuzumi H, Ohta T, Matsuzaki G. Importance of murine Vdelta1gammadelta T cells expressing interferon-gamma and interleukin-17A in innate protection against *Listeria monocytogenes* infection. *Immunology.* 2008; 125:170–177. [PubMed: 18397272]
50. Simonian PL, Roark CL, Wehrmann F, Lanham AM, Born WK, O'Brien RL, Fontenot AP. IL-17A-expressing T cells are essential for bacterial clearance in a murine model of hypersensitivity pneumonitis. *J Immunol.* 2009; 182:6540–6549. [PubMed: 19414809]
51. Mokuno Y, Matsuguchi T, Takano M, Nishimura H, Washizu J, Ogawa T, Takeuchi O, Akira S, Nimura Y, Yoshikai Y. Expression of toll-like receptor 2 on gamma delta T cells bearing invariant V gamma 6/V delta 1 induced by *Escherichia coli* infection in mice. *J Immunol.* 2000; 165:931–940. [PubMed: 10878368]
52. Takano M, Nishimura H, Kimura Y, Mokuno Y, Washizu J, Itohara S, Nimura Y, Yoshikai Y. Protective roles of gamma delta T cells and interleukin-15 in *Escherichia coli* infection in mice. *Infect Immun.* 1998; 66:3270–3278. [PubMed: 9632595]
53. Ryan-Payseur B, Frencher J, Shen L, Chen CY, Huang D, Chen ZW. Multieffector-functional immune responses of HMBPP-specific V $\gamma$ 2V $\delta$ 2 T cells in nonhuman primates inoculated with *Listeria monocytogenes*  $\Delta$ actA prfA\*. *J Immunol.* 2012; 189:1285–1293. [PubMed: 22745375]
54. Shen Y, Zhou D, Qiu L, Lai X, Simon M, Shen L, Kou Z, Wang Q, Jiang L, Estep J, Hunt R, Clagett M, Sehgal PK, Li Y, Zeng X, Morita CT, Brenner MB, Letvin NL, Chen ZW. Adaptive immune response of Vgamma2Vdelta2+ T cells during mycobacterial infections. *Science.* 2002; 295:2255–2258. [PubMed: 11910108]
55. Zeng X, Wei YL, Huang J, Newell EW, Yu H, Kidd BA, Kuhns MS, Waters RW, Davis MM, Weaver CT, Chien YH.  $\gamma\delta$  T cells recognize a microbial encoded B cell antigen to initiate a rapid antigen-specific interleukin-17 response. *Immunity.* 2012; 37:524–534. [PubMed: 22960222]
56. Pitard V, Roumanes D, Lafarge X, Couzi L, Garrigue I, Lafon M-E, Merville P, Moreau J-F, Déchanet-Merville J. Long-term expansion of effector/memory V $\delta$ 2-  $\gamma\delta$  T cells is a specific blood signature of CMV infection. *Blood.* 2008; 112:1317–1324. [PubMed: 18539896]
57. Hintz M, Reichenberg A, Altincicek B, Bahr U, Gschwind RM, Kollas AK, Beck E, Wiesner J, Eberl M, Jomaa H. Identification of (E)-4-hydroxy-3-methyl-but-2-enyl pyrophosphate as a major activator for human gammadelta T cells in *Escherichia coli*. *FEBS Lett.* 2001; 509:317–322. [PubMed: 11741609]
58. Begley M, Gahan CG, Kollas AK, Hintz M, Hill C, Jomaa H, Eberl M. The interplay between classical and alternative isoprenoid biosynthesis controls gammadelta T cell bioactivity of *Listeria monocytogenes*. *FEBS Lett.* 2004; 561:99–104. [PubMed: 15013758]
59. Roark CL, Aydintug MK, Lewis J, Yin X, Lahn M, Hahn YS, Born WK, Tigelaar RE, O'Brien RL. Subset-specific, uniform activation among V gamma 6/V delta 1+ gamma delta T cells elicited by inflammation. *J Leukoc Biol.* 2004; 75:68–75. [PubMed: 14525969]
60. Ehl S, Schwarz K, Enders A, Duffner U, Pannicke U, Kühr J, Mascart F, Schmitt-Graeff A, Niemeier C, Fisch P. A variant of SCID with specific immune responses and predominance of gamma delta T cells. *J Clin Invest.* 2005; 115:3140–3148. [PubMed: 16211094]
61. Wang S, Welte T, Fang H, Chang GJ, Born WK, O'Brien RL, Sun B, Fujii H, Kosuna K, Wang T. Oral administration of active hexose correlated compound enhances host resistance to West Nile encephalitis in mice. *J Nutr.* 2009; 139:598–602. [PubMed: 19141700]
62. Gomes AQ, Martins DS, Silva-Santos B. Targeting  $\gamma\delta$  T lymphocytes for cancer immunotherapy: from novel mechanistic insight to clinical application. *Cancer Res.* 2010; 70:10024–10027. [PubMed: 21159627]

**FIGURE 1.**

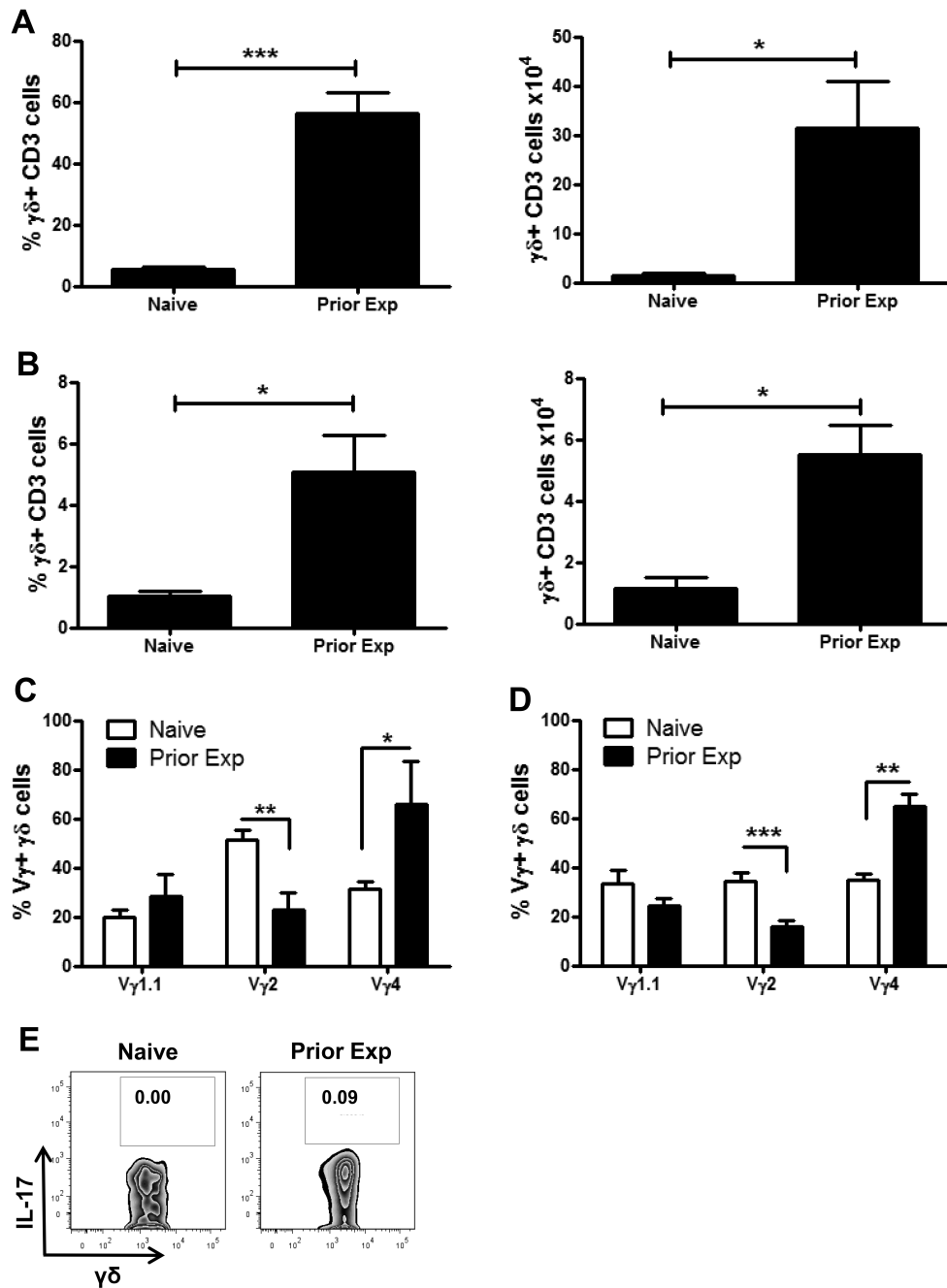
$\gamma\delta$  T cells are the primary source of IL-17 during *S. aureus* induced peritonitis. Mice were infected with *S. aureus* ( $5 \times 10^8$  CFU) via i.p. injection. At the indicated times post-infection, the peritoneal cavity was lavaged and the MLN collected. Secreted IL-17A and IL-1 $\beta$  in the peritoneal fluid was measured by ELISA (A). 3 h post-infection (B, C), and at the indicated time-points (D & E), PECs (B & D) and MLN cells (C & E), cultured with Brefeldin A but not PMA and ionomycin, were stained for surface CD3, CD4, CD8 and  $\gamma\delta$ TCR, and intracellular IL-17, and analysed by flow cytometry. IL-1R1<sup>-/-</sup> and WT mice were infected with *S. aureus* ( $5 \times 10^8$  CFU) via i.p. injection and at 3 h post-infection PECs, cultured with Brefeldin A but not PMA and ionomycin, were stained for surface CD3 and  $\gamma\delta$ TCR, and

intracellular IL-17, and analysed by flow cytometry (F). Results expressed as mean  $\pm$  SEM of n=10 mice/ group, with representative FACS plots. \* $p < 0.05$ , \*\* $p < 0.005$ , \*\*\* $p < 0.001$ . Data representative of 2 independent experiments.

**FIGURE 2.**

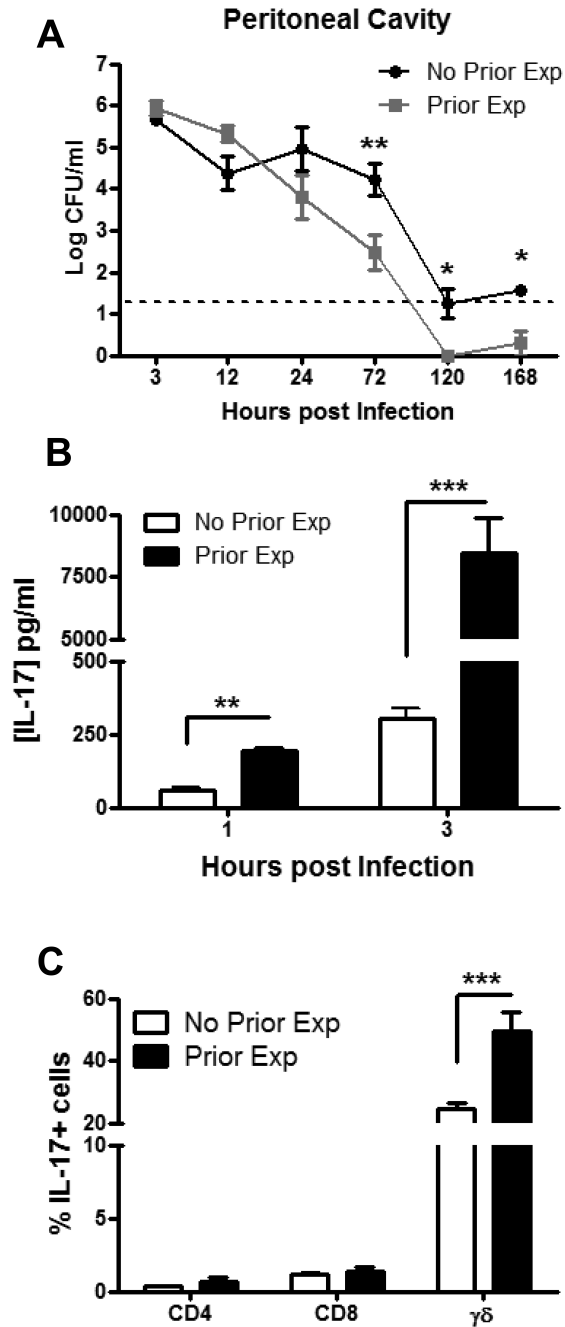
Differential recruitment of  $\gamma\delta$  T cell subsets over the course of peritoneal infection. Mice were infected with *S. aureus* ( $5 \times 10^8$  CFU) via i.p. injection. PECs (A & B) and MLN cells (C) were harvested from mice at the indicated times post-infection, surface stained with fluorochrome-conjugated antibodies against CD3,  $\gamma\delta$ TCR, V $\gamma$ 1.1, V $\gamma$ 2 and V $\gamma$ 3 and analysed by flow cytometry. (A) FACS plots are representative of PECs at 3 h post-infection. (B & C) Results expressed as mean frequency  $\pm$  SEM of each subset within the  $\gamma\delta^+$  gate of  $n=9-12$  mice/ group. \* $p < 0.05$ , \*\* $p < 0.005$ , \*\*\* $p < 0.001$ . Data representative of 2-3 independent experiments.



**FIGURE 3.**

Elevated frequency of V $\gamma$ 4<sup>+</sup> cells in mice previously exposed to *S. aureus*. Groups of mice were exposed to *S. aureus* ( $5 \times 10^8$  CFU) via i.p. injections on d 0, 7 and 14. Following recovery on d 35, isolated PECs and MLN cells were cultured with Brefeldin A, but not PMA and ionomycin, and stained for surface CD3,  $\gamma\delta$ TCR, V $\gamma$ 1.1, V $\gamma$ 2 and V $\gamma$ 3, and intracellular IL-17, and analysed by flow cytometry.  $\gamma\delta$  T cell frequencies amongst peritoneal (A) and MLN CD3<sup>+</sup> T-cells (B) and total numbers are shown. The V $\gamma$  subsets comprising the  $\gamma\delta$  T cell population in the peritoneal cavity (C) and the MLN (D) at this stage were examined. IL-17-expression by  $\gamma\delta$  T cells from naive or previously exposed mice

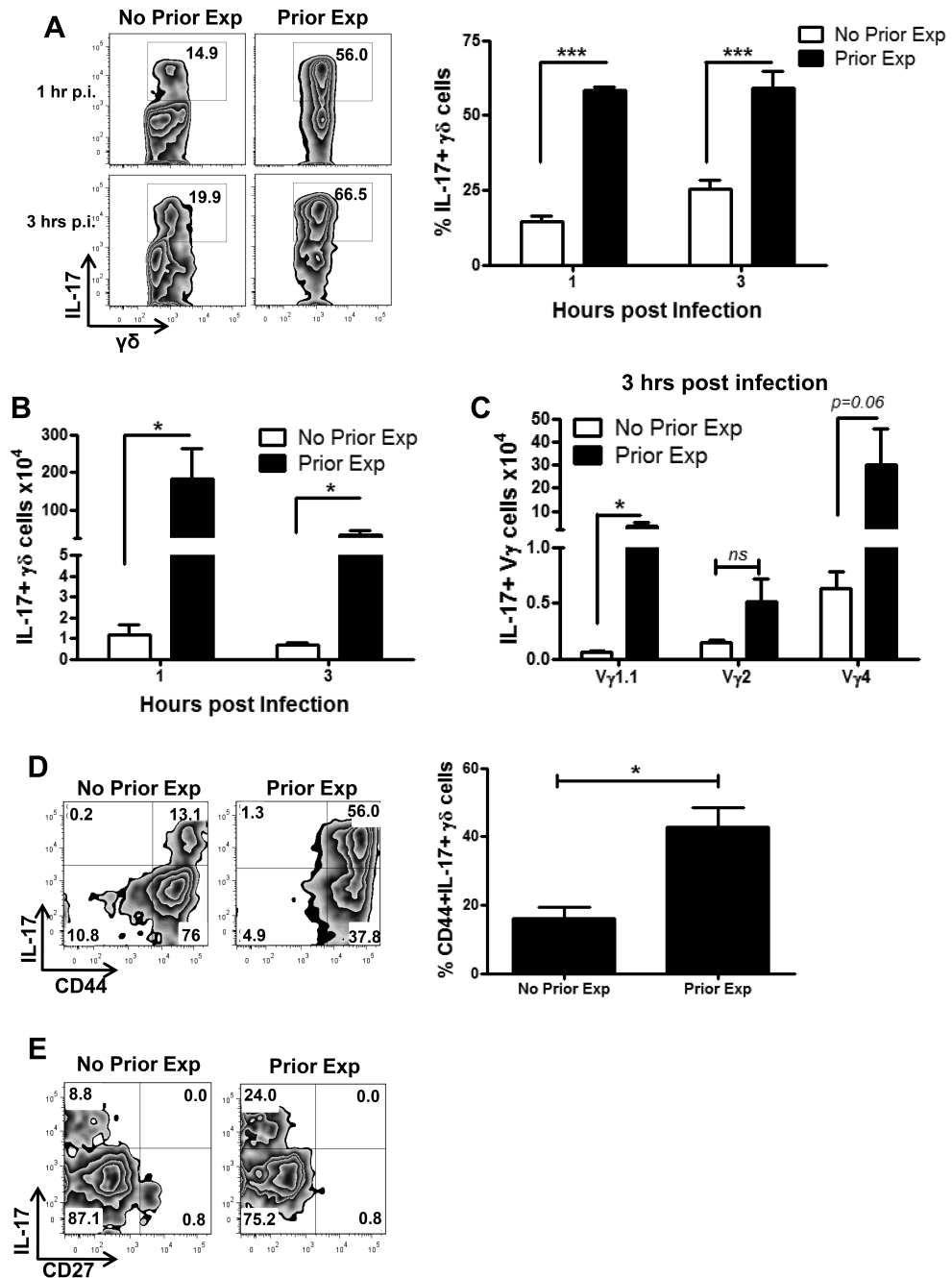
was compared (E). Results expressed as mean  $\pm$  SEM of n=8 mice per group. \*p<0.05, \*\*p<0.005, \*\*\*p<0.001. Data representative of 2 independent experiments.

**FIGURE 4.**

Prior exposure to *S. aureus* results in protection against subsequent infection and enhanced IL-17 responses

Groups of mice were exposed to *S. aureus* ( $5 \times 10^8$  CFU) via i.p. injections on d 0, 7 and 14. Mice were then re-challenged with *S. aureus* ( $5 \times 10^8$  CFU) on d 35, as were a group of naive controls. At the indicated times post-challenge, the bacterial burden in the peritoneum was assessed (A). Results expressed as log CFU/ml of lavage fluid collected from n=5 mice/group per time point. At 1 and 3 h post-challenge, secreted IL-17 in the peritoneal fluid was measured by ELISA (B). At 3 h post-infection, isolated PECs were cultured with Brefeldin

A, but not PMA and ionomycin, stained for surface CD3, CD4, CD8 and  $\gamma\delta$ TCR, and intracellular IL-17, and analysed by flow cytometry (C). Results expressed as mean  $\pm$  SEM of n=12 mice/ group. Data representative of 3 independent experiments. \*p<0.05, \*\*p<0.005, \*\*\*p<0.001.

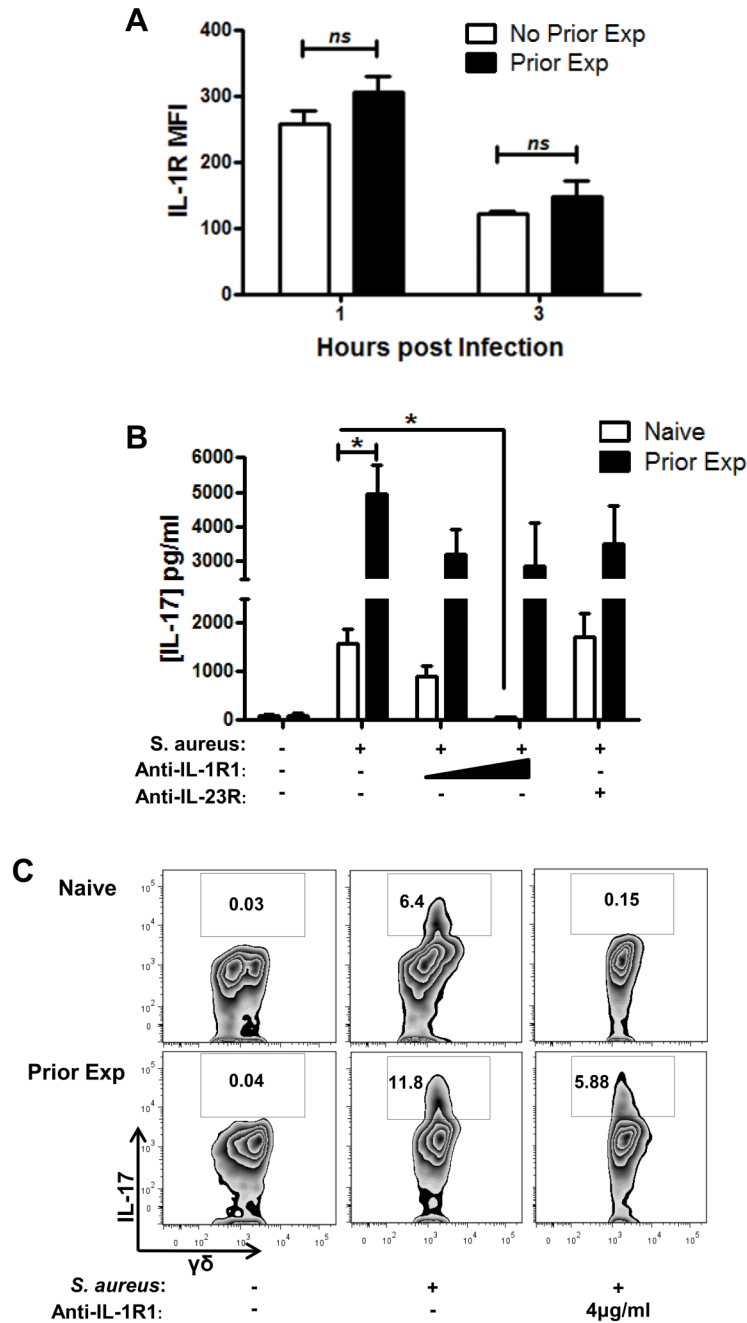
**FIGURE 5.**

Prior exposure to *S. aureus* results in an enhanced IL-17 response by predominantly V $\gamma$ 4<sup>+</sup>  $\gamma\delta$  T cells upon re-infection

Groups of mice were exposed to *S. aureus* ( $5 \times 10^8$  CFU) via i.p. injections on d 0, 7 and 14. Mice were allowed to recover for 21 d before being re-challenged with *S. aureus* ( $5 \times 10^8$  CFU) on day 35, as were a group of naïve controls. At 1 and 3 h post infection PECs were cultured with Brefeldin A, but not PMA and ionomycin, stained for surface CD3,  $\gamma\delta$ TCR and intracellular IL-17, and analysed by flow cytometry (A & B). IL-17 expression by individual V $\gamma$  subsets in the peritoneum was also assessed at 3 h post-challenge (C). The proportions of total  $\gamma\delta$  T cells expressing IL-17<sup>+</sup> and CD44 (D) or CD27 (E) were examined.



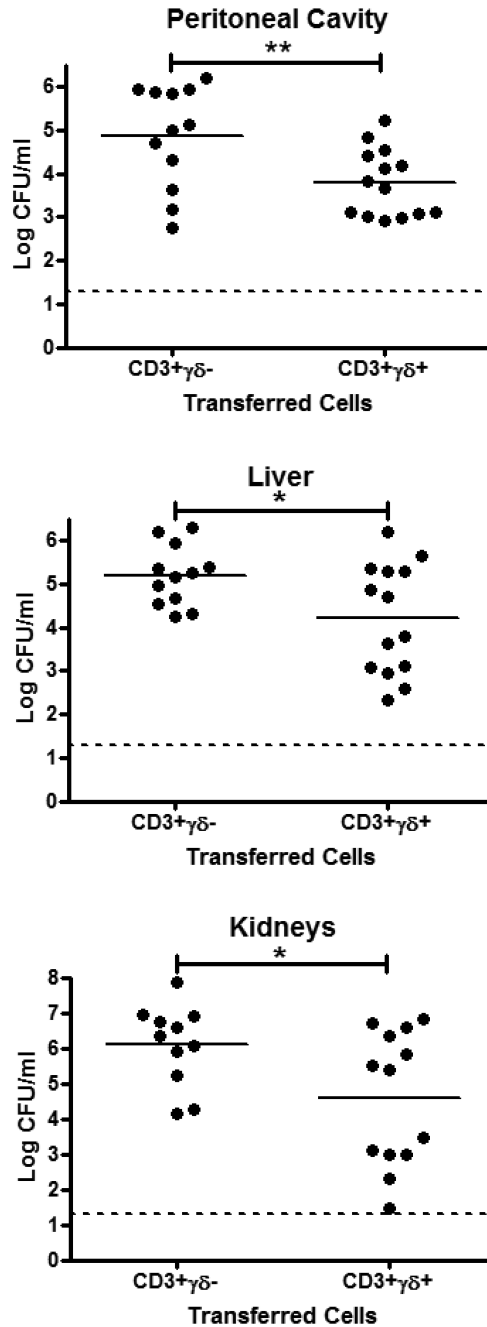
Results expressed as mean  $\pm$  SEM of n=9-12 mice/ group, with representative FACS plots.  
\*p<0.05 \*\*p<0.005, \*\*\*p<0.001. Data represent 2-3 independent experiments.

**FIGURE 6.**

IL-1R or IL-23R signalling is dispensable for the secondary IL-17 response of primed  $\gamma\delta$  T cells *in vitro*

Groups of mice were exposed to *S. aureus* ( $5 \times 10^8$  CFU) via i.p. injections on d 0, 7 and 14. Mice were allowed to recover for 21 d before being re-challenged with *S. aureus* ( $5 \times 10^8$  CFU) on day 35, as were a control group of naïve mice. PEC were cultured with Brefeldin A, but not PMA and ionomycin, stained for surface CD3,  $\gamma\delta$ TCR and IL-1RI expression, and intracellular IL-17, and analysed by flow cytometry (A). Results expressed as mean  $\pm$  SEM for n=9 mice/group. Data are representative of 2 independent experiments.  $\gamma\delta$  T cells

purified (> 98% pure) from previously exposed or naive mice were co-cultured overnight with *S. aureus* infected macrophages (MOI 1:10), in the presence or absence of monoclonal antibodies to IL-1RI (4µg/ml or 1µg/ml) or IL-23R (1µg/ml). Uninfected macrophages were used as a control. IL-17 concentration in supernatants was quantified by ELISA (B). Results expressed as mean ± SEM for n=4-5 replicates/group. \*p<0.05. Cells were incubated with Brefeldin A, but not PMA and ionomycin, stained for surface CD3 and γδTCR, and intracellular IL-17, and analysed by flow cytometry (C). Data representative of 4-5 independent experiments.

**FIGURE 7.**

Adoptively transferred *S. aureus*-primed  $\gamma\delta$  T cells protect naïve mice against subsequent infection

$\gamma\delta$  T cells were purified (> 98% pure) from the peritoneum of *S. aureus*-infected mice on d 35 (i.e. 21 days after the final exposure to *S. aureus*), and  $1 \times 10^5$  cells transferred i.p. to naïve syngeneic hosts.  $1 \times 10^5$   $\gamma\delta$  T cell-depleted CD3<sup>+</sup> T cells (i.e. CD3<sup>+</sup> $\gamma\delta^-$  cells) isolated from the same mice previously exposed to *S. aureus* were transferred to a separate group of naïve mice as a control. 3 h post-transfer, mice were infected with *S. aureus* i.p. ( $5 \times 10^8$  CFU). 72 h post-infection, bacterial burden was assessed in the peritoneal cavity, kidneys

and liver. Results are expressed as log CFU/ml of n=12-14 mice/group. \*p<0.05, \*\*p<0.005, \*\*\*p<0.001. Data representative of 3 independent experiments.