



Brain Signature of Chronic Orofacial Pain: A Systematic Review and Meta-Analysis on Neuroimaging Research of Trigeminal Neuropathic Pain and Temporomandibular Joint Disorders

Chia-shu Lin*

Department of Dentistry, School of Dentistry, National Yang-Ming University, Taipei, Taiwan (ROC)

Abstract

Brain neuroimaging has been widely used to investigate the brain signature of chronic orofacial pain, including trigeminal neuropathic pain (TNP) and pain related to temporomandibular joint disorders (TMD). We here systematically reviewed the neuroimaging literature regarding the functional and structural changes in the brain of TNP and TMD pain patients, using a computerized search of journal articles via PubMed. Ten TNP studies and 14 TMD studies were reviewed. Study quality and risk of bias were assessed based on the criteria of patient selection, the history of medication, the use of standardized pain/psychological assessments, and the model and statistics of imaging analyses. Qualitative meta-analysis was performed by examining the brain regions which showed significant changes in either brain functions (including the blood-oxygen-level dependent signal, cerebral blood flow and the magnetic resonance spectroscopy signal) or brain structure (including gray matter and white matter anatomy). We hypothesized that the neuroimaging findings would display a common pattern as well as distinct patterns of brain signature in the disorders. This major hypothesis was supported by the following findings: (1) TNP and TMD patients showed consistent functional/structural changes in the thalamus and the primary somatosensory cortex, indicating the thalamocortical pathway as the major site of plasticity. (2) The TNP patients showed more alterations at the thalamocortical pathway, and the two disorders showed distinct patterns of thalamic and insular connectivity. Additionally, functional and structural changes were frequently reported in the prefrontal cortex and the basal ganglia, suggesting the role of cognitive modulation and reward processing in chronic orofacial pain. The findings highlight the potential for brain neuroimaging as an investigating tool for understanding chronic orofacial pain.

Citation: Lin C-s (2014) Brain Signature of Chronic Orofacial Pain: A Systematic Review and Meta-Analysis on Neuroimaging Research of Trigeminal Neuropathic Pain and Temporomandibular Joint Disorders. PLoS ONE 9(4): e94300. doi:10.1371/journal.pone.0094300

Editor: Michael Costigan, Boston Children's Hospital and Harvard Medical School, United States of America

Received: October 7, 2013; **Accepted:** March 15, 2014; **Published:** April 23, 2014

Copyright: © 2014 Chia-shu Lin. This is an open-access article distributed under the terms of the Creative Commons Attribution License, which permits unrestricted use, distribution, and reproduction in any medium, provided the original author and source are credited.

Funding: This study was funded by National Science Council of Taiwan (NSC 102-2314-B-010-049). The funders had no role in study design, data collection and analysis, decision to publish, or preparation of the manuscript.

Competing Interests: The author has declared that no competing interests exist.

* E-mail: winzlin@ym.edu.tw

Introduction

Trigeminal neuropathic pain (TNP) and pain related to temporomandibular disorders (TMD) have been the challenging issues in chronic orofacial pain [1,2]. Effective management of the pain has not been established. Unlike acute orofacial pain (e.g., toothache), TNP and TMD pain may persist when the peripheral lesions have been treated, or even without peripheral abnormalities being found [3,4]. In addition, the degree of TNP and TMD pain is associated with the cognitive and emotional factors, such as anxiety and depression [5]. Since pain is a multidimensional experience, consisting of sensory-discriminative and cognitive-affective experiences [6], TNP and TMD pain may be closely associated with the abnormality in the central pathophysiological process [7]. Therefore, the understanding of how the brain shapes pain experience would be critical to manage the pain of TNP and TMD patients.

Brain neuroimaging has been widely used to investigate the changes in brain function and structure associated with chronic orofacial pain (TNP: [8–17]; TMD: [10,11,18–29]). However, the conclusions drawn from a single study could be limited by its

specific research conditions, including the criteria of patient selection, the experimental design and the approach of neuroimaging data analysis. And statistically, the imaging results from a single study can also be compromised by the small number of participants. The small sample size may lead to a lower statistical power, thus influencing the reproducibility of the results [30]. Therefore, in the current study we systematically reviewed the literature regarding TNP/TMD pain-related changes in brain structure (including gray matter and white matter anatomy [31]) and brain function (including the blood-oxygen-level-dependent [BOLD] signal, the cerebral blood flow and the magnetic resonance spectroscopy signal [32]). Previous investigation on the other types of chronic pain has revealed that changes in the pain-related network (including the thalamus, the primary and secondary somatosensory cortices, the mid/anterior cingulate cortex, and the insula) were associated with chronic pain [33,34]. In the pain-related network, the alterations in the thalamocortical pathway of somatosensation are associated with pain with a central nature [35–37]. In addition, cognitive-affective factors, such as cognitive reappraisal, anxiety and depression, are critical to shape

the experience of chronic pain [6,38]. Based on the previous evidence, we here hypothesized that (1) both TNP and TMD would show a common pattern of functional and structural changes within the pain-related network. (2) As a central pain, TNP would show more changes in the thalamocortical pathway, compared to TMD pain, which is predominantly associated with the abnormality within the peripheral musculoskeletal system (e.g., the masticatory muscle and the joint). (3) The prefrontal cortex, the limbic system and the circuitry of reward processing (including the basal ganglia) would show functional or structural changes related to chronic orofacial pain [33,34].

Methods

Procedures of Literature Search

The current review was performed according to the guide of Preferred Reporting Items for Systematic Reviews and Meta-Analyses (PRISMA) for reporting in systematic reviews and meta-analyses [39]. To identify relevant neuroimaging studies on pain related to TNP and TMD, a computerized search of journal articles via PubMed (<http://www.ncbi.nlm.nih.gov/pubmed>) was conducted with several sets of keyword combinations, including “trigeminal”, “temporomandibular disorder”, “pain”, “brain” and “MRI” as the keywords (see Table 1 for the complete search strategy). We deliberately used a broad range of keyword combinations to avoid missing studies. The search was restricted to the journal articles published during the period from 1994 Jan. 1 to 2013 Aug. 31. Review articles and case reports were excluded (Figure 1).

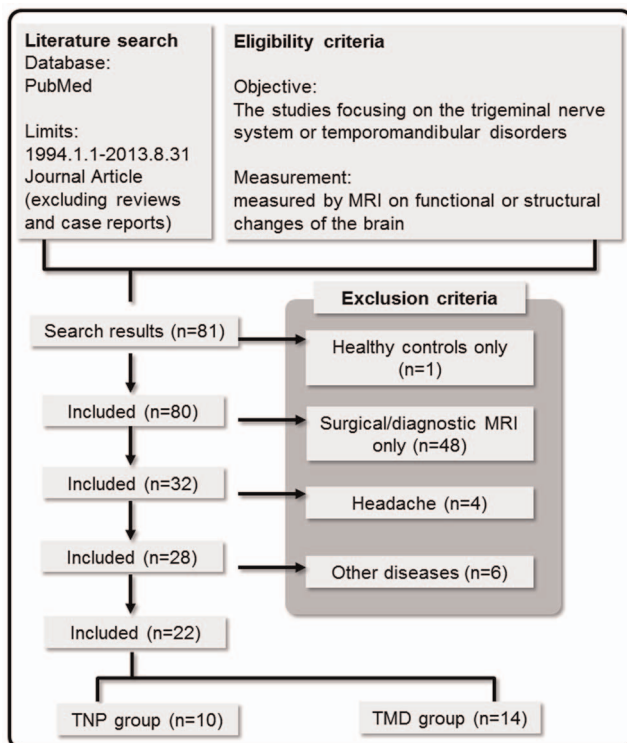


Figure 1. Flow diagram describing the process of review and study selection.

doi:10.1371/journal.pone.0094300.g001

Eligibility Criteria and Study Selection

The studies retrieved according to the above-stated search strategy (Figure 1) were further screened according to the inclusion and exclusion criteria listed in Table 1B. In this review, we only focused on the findings associated with the following five major neuroimaging approaches: (1) BOLD signal-based functional MRI (fMRI), (2) arterial spin labelling (ASL), (3) magnetic resonance spectroscopy (MRS), (4) T1-weighted structural MRI (sMRI), and (5) diffusion-weighted imaging (DWI). Note that we considered MRS signal changes here as a signature of brain function, because it reflects the metabolic changes of biochemical molecules, which underlie the transduction of neural signals. All the five imaging modalities have been widely used in investigating the brain signature of chronic diseases. For detailed introduction of the methodology about each approach, see [34,40–42]. The studies that potentially used the same patient cohort with different imaging analyses were included. The eligibility assessment was performed by the first author (C-S.L.), primarily according to the title and the abstract of the selected articles.

Data Collection and Extraction of Data Items

The full text of all the selected studies, together with the online supporting materials, was retrieved from the Internet. The following data items were manually extracted from the full text version of the original articles and classified into two categories:

- (1) Demographic and clinical characteristics (6 items), including the diagnosis of orofacial disorders (including subtypes), the number of participants of each sex and mean age (for both the patient and the control groups), pain severity (including the ratings of intensity and/or unpleasantness), and the duration of pain (Table 2)
- (2) Experimental design and neuroimaging findings (6 items), including the type of imaging modality, the type of stimuli and the site of stimulation, the covariate (e.g., pain severity) considered in imaging analysis, the signals measured by neuroimaging, and the major imaging findings (Table 3 and Table 4).

In addition, five data items related to study quality and risk of bias were extracted (see Table 5 and Table 6). In total 17 data items were extracted.

Assessment of Study Quality and Risk of Bias

In the current PRISMA guideline, the assessment of risk of bias and study quality has been clearly distinguished [39]. For the assessment of risk of bias, we considered the heterogeneity of diagnosis and symptomatology as the major factor that would introduce bias in research outcomes. Therefore we focused on the inclusion/exclusion criteria for patient selection, the patients' history of medication and the use of standardized clinical assessments (i.e., the items 1–3). For the assessment of study quality, we applied the recently proposed guideline on reporting functional MRI studies [43], focusing on the statistical model for comparison and imaging statistics (i.e., the items 4–5):

- (1) Criteria of patient selection: whether established criteria (e.g., the Research Diagnostic Criteria [RDC], [44]) or detailed inclusion/exclusion criteria were applied for patient selection.
- (2) Status of medication: whether the history of prescription has been recorded and the medication was temporally discontinued before the MRI scan.
- (3) Standardized assessment: whether standardized pain/psychological assessments were applied to assess the patients.

Table 1. Search strategy and study selection.

Search strategy:			
Search	Query	Filters	Items found
#1	trigeminal (neuralgia OR neuropathy OR neuropathic) NOT (Case Reports[ptyp] OR Review[ptyp])	Journal Article; Publication date from 1994/01/01 to 1949 2013/08/31	
#2	temporomandibular disorder NOT (Case Reports[ptyp] OR Review[ptyp])		5176
#3	pain (central nervous system OR brain) MRI		5042
#4	(#1 OR #2) AND #3		81
Inclusion and exclusion criteria of study selection:			
Inclusion criteria			
1. The studies which performed on either TNP or TMD patients.			
2. The MRI-related studies, including structural MRI (sMRI), functional (BOLD-based) MRI (fMRI), MRS, and diffusion-weighted MRI (DWI).			
Exclusion criteria			
1. The studies which investigated only healthy controls.			
2. The studies which applied MRI as a diagnostic tool for surgery or clinical assessment, i.e., not focusing on the long-term changes in brain signatures.			
3. The studies which focused on the trigeminal system-related disorders other than TNP and TMD, such as dental pain or headache.			

doi:10.1371/journal.pone.0094300.t001

- (4) Statistical model: whether the type of group-wise statistical inference (e.g., random or fixed effect) was reported.
- (5) Imaging statistics: whether correction of multiple comparison was applied to the resulted images.

Each item was scored as 1 if the related details were reported in the study, otherwise as 0. The total score of a study ranged from 0 to 5.

Qualitative Meta-Analysis

In the current review, we did not perform a quantitative imaging meta-analysis because of the heterogeneity of imaging modalities and analysis approaches, and the small number of participants in some studies. Instead, we performed a qualitative meta-analysis by identifying the brain regions that showed significant functional or structural changes in patients, compared to the healthy control participants, or within the patients between the affected and the unaffected sites. The reported brain regions were categorized into 14 regions of interest (ROIs) that are associated with pain processing [33]: the thalamus, the primary and secondary somatosensory cortices (S1/S2), the anterior and mid-cingulate cortices (ACC/MCC), the anterior and posterior insular cortices (aINS/pINS), the superior, middle, inferior and orbitofrontal part of the prefrontal cortex (PFC), the basal ganglia (BG), the medial temporal lobe (including the hippocampus and the amygdala, MT), and the periaqueductal gray (PAG). Categorization was performed separately for the positive changes (e.g., increased BOLD activity or increased GMV in patients vs. healthy control participants) and the negative changes (e.g., decreased BOLD activity or decreased GMV in patients vs. healthy control participants).

The anatomical labels of the ROIs were surveyed using FSLView (<http://fsl.fmrib.ox.ac.uk/fsl/fslview/>). The Oxford thalamic connectivity atlas [45] was consulted for specifying the functional role of the thalamic sub-regions, according to their patterns of cortical connections. The Jülich histological atlas (<http://www.fz-juelich.de/inb/inb-3/Home>) was consulted for specifying the Brodmann area of the S1.

Statistical Analysis

Quantifying the similarity and distinctiveness of brain signature pattern. Our main hypothesis focused on the similarity and distinctiveness of the pattern of brain signature related to TNP and TMD pain. We quantified the *brain signature pattern* based on the changes in the pain-related ROIs, according to the following definitions:

- (A) For each ROI, we defined the number of the studies that reported significant changes, as shown in the qualitative meta-analysis, as the index *regional change* of that ROI. This index was calculated respectively for positive and negative changes and for different imaging modalities. For example, in the functional studies about TNP and TMD, the positive regional change for S1 was '3' and '4', respectively (Table 7).
- (B) For the positive and negative changes of different imaging modalities, the brain signature pattern of the TNP or the TMD group was represented as a set of regional changes from the nine ROIs: THA, S1, S2, PFC, BG, MT, PAG, the cingulate cortex (CC, including ACC and MCC), and the insula (INS, including aINS and pINS).

Notably, we here focused on the studies that applied whole-brain analysis. The findings derived from ROI-specific analyses were excluded (e.g., [9]). It should be clarified that an analysis was here considered as 'whole-brain', if a greater mask was applied to restrict the search in the cortical area (e.g., [17]). The findings from the MRS studies ([10–12]) were also excluded, because all the studies applied ROI-specific analyses. The analyses were performed separately for functional and structural studies and for the reports of positive and negative changes. Because there were very few findings from the functional studies with negative changes and the structural studies with positive changes (for descriptive data see Figure S1), we focused only on (1) the functional studies with positive changes and (2) the structural studies with negative changes. Similarity or distinctiveness of the brain signature patterns related to TNP and TMD was judged by the following two conditions: (1) there is a significant association in the regional changes between the two groups, and (2) there is no significant difference in the regional changes between the two groups.

Table 2. Demographic and clinical profiles of the included studies.

Source	Diagnosis	Patient					Control		
		F	M	Age	Severity (0–10)	Duration (Year)	F	M	Age
Trigeminal neuropathic pain									
Becerra 2006	TNP	5	1	48.8 ¹	>4 ³	N/A	-		
Blatow 2009	TN	14	4	48–73	N/A	N/A	8	5	25–70
		6	4	44–76	N/A	N/A			
Scrivani 2010	TNP	4	2	48.3	>3–4 ³	N/A	-		
Gustin 2011	TNP ⁶	17	4	54.7	3.5/3.4 ⁴	8.5	24	6	53.6
Moisset 2011	TNP-i	6	9	67.2	4–6	8.3			
Gustin 2012	TNP	12	3	50	3.8/3.6 ⁴	4.7	27	26	41
Henderson 2013	TNP	19	4	49.8	3.9	5.8	31	12	49.8
Obermann 2013	TN ⁷	36	24	62	7.7	8.3	28	21	61.8
DeSouza 2013	TN-i	15	9	48.5	N/A	6.3	15	9	47.6
DeSouza 2014	TN	11	7	54.1	N/A	N/A	11	7	49.6
Temporomandibular joint disorder pain									
Jiang 2006	TMD-s	6	1	26.9	N/A	1–6(mo)	5	5	31
Younger 2010	TMD-m	15	0	38	4.3 ¹	4.4	15	0	N/A ⁵
Abrahamsen 2010	TMD-m	18	1	40.7	4.8	12.4	-		
Nebel 2010	TMD	13	0	28.7	2.4	N/A	12	0	28.8
Zhao 2011	TMD-s	12	4	33.7	≥5	N/A	7	7	23.7
Gerstner 2011	TMD-m	9	0	25.4 ¹	2.2	2.5	9	0	24.8 ²
Gustin 2011	TMD	16	4	45.7	4.7/3.2 ⁴	11.5	25	6	46.8
Moayed 2011	TMD-i	17	0	33.1	4.3/5.4 ²	9.8	17	0	32.2
Weissman-Fogel 2011	TMD	17	0	35.2 ¹	4.2	9.3	17	0	N/A ⁵
Gerstner 2012	TMD	10	1	25.8	3.8	0.5–7	10	1	24.8
Ichesco 2012	TMD	8	0	25.4	2.2	2.5	8	0	24.9
Moayed 2012	TMD-i	17	0	33.1	4.3/5.4 ²	9.8	17	0	32.8
Salomons 2012	TMD	17	0	33.1	4.3/5.4 ²	9.8	17	0	32.2
Gustin 2012	TMD	13	4	44	4.2/4.5 ⁴	10.7	27	26	41

i, idiopathic; m, myofascial; s, synovitis; F, number of female participants; M, number of male participants; N/A, not available from the full text; TNP, trigeminal neuropathic pain; TMD, temporomandibular joint disorder.

¹Mean age is calculated based on the data revealed in the original table; ²average pain intensity/unpleasantness over the last month; ³brushing-evoked/spontaneous pain; ⁴pain a week before/pain before scanning; ⁵age matched with the patient group; ⁶including TN patients; ⁷including TN patients with concomitant chronic facial pain.

doi:10.1371/journal.pone.0094300.t002

Analysis on the association of regional changes. We considered the brain signature patterns related to TNP and TMD as similar, if the brain signature changes of one group were associated with those in another group. We performed the non-parametric Spearman rank correlation analysis on the regional changes, between TNP and TMD. A significantly positive correlation indicated that the brain signature pattern between the two groups was associated. The correlation coefficient with a p value <0.05 was considered statistically significant.

Analysis on the overall difference of regional changes. To claim that the patterns are similar between the two groups, we considered that the overall degree of regional changes (e.g., the mean regional changes over the nine ROIs) not to be significantly different. It should be noted that a direct comparison in regional change could be biased by the total number of articles related to TNP and TMD. Therefore, we compared the *normalized regional change*, i.e., the original index (i.e., regional change) divided by the total number of articles. We performed the two-tailed paired Wilcoxon test on the normalized

regional changes between TNP and TMD. The resulting W statistics quantifies the difference in the overall brain signatures pattern between the two groups. Note that the null hypothesis referred to ‘no difference between the two groups’. The W statistics with a p value <0.05 was considered statistically significant.

Decision-making on the similarity and distinctiveness of brain signature. The pattern of brain signature between TNP and TMD was categorized as ‘common’ if the Spearman rank correlation coefficient was significant AND the paired Wilcoxon test failed to reject the null hypothesis. In contrast, it was categorized as ‘different’ if the Spearman rank correlation coefficient was not significant AND the paired Wilcoxon test rejected the null hypothesis.

Table 3. Experimental design and neuroimaging findings of the included studies: Trigeminal neuropathic pain.

Source	Experimental design					Major neuroimaging findings on the pain-related brain regions
	Modality	Stimuli	Site	Covariate	Signal	
Becerra 2006	fMRI	Mechanical	R V2 area	-	BOLD	AF>UF: THA/SI/R aINS/R ACC
		Thermal	(with allodynia)			
Blatow 2009	fMRI	Mechanical	R/L fingers and lips	-	BOLD	Pre-OP<HC (finger and lip): [B S1/B S2]
Scrivani 2010	fMRI	Mechanical	R/L V2 or V3 area	-	BOLD	Medication<Placebo (Thermal): R THA/R MCC/R S1
		Thermal				Medication>Placebo (Mechanical): R INS/R S1
Gustin 2011	sMRI	-	-	age/sex/TBV	GMV	TNP>HC: CL pINS
						TNP<HC: B THA/IL S1/IL aINS
	fMRI	Mechanical	R bottom lips	-	BOLD	(for localizing ventroposterior THA)
	MRS	-	-	-	NAA/Cr	TNP<HC: [THA]
Moisset 2011	fMRI	Mechanical	AF/UF V2/V3 area, R hand	-	BOLD	AF>UF (evoked pain): L S1/R THA/L aINS/R ACC/L MCC
Gustin 2012	fMRI	Mechanical	IL lower lip/fingers	-	BOLD	Functional reorganization: [CL S1]
	DWI	-	-	age/sex	FA	TNP<HC: [CL S1]
	ASL	-	-	age/sex	CBF	TNP<HC: [CL S1]
Henderson 2013	sMRI	-	-	age/sex/TBV	GMV	TNP<HC: IL aINS/IL S1/B THA
	fMRI	Mechanical	lower lip	-	BOLD	(for localizing ventroposterior THA)
		Resting-state	-	-	FC	Negative correlation with thalamic GABA level
	ASL	-	-	age/sex	CBF	TNP<HC: [CL THA/CL S1]
	MRS	-	-	-	GABA	TNP<HC: [THA]
Obermann 2013	sMRI	-	-	age	GMV	TN<HC: L S1/B INS/B ACC/L THA/L S2
DeSouza 2013	sMRI	-	-	age	GMV	TN>HC: [IL THA]
				age	CT	TN>HC: [CL S1]
						TN<HC: [B ACC/IL pINS/IL aINS]
DeSouza 2014	DWI	-	-	-	FA	TN<HC: CC/cingulum/CL SLF/B pCOR

ACC, anterior cingulate cortex; AF, affected side; aINS, anterior insula; ASL, arterial spin labeling; B, bilateral; BOLD, blood-oxygen-level-dependent; CBF, cerebral blood flow; CC, corpus callosum; CL, contralateral; COR, corona radiate; CT, cortical thickness; DWI, diffusion-weighted imaging; FA, fractional anisotropy; FC, functional connectivity; fMRI, functional magnetic resonance imaging; GMV, gray matter volume; IL, ipsilateral; L, left side; MCC, mid-cingulate cortex; MRS, magnetic resonance spectrum; pINS, posterior insula; R, right side; S1, primary somatosensory cortex; S2, secondary somatosensory cortex; SC, structural connectivity (probabilistic tractography); SLF, superior longitudinal fasciculus; sMRI, structural magnetic resonance imaging; TBV, total brain volume; THA, thalamus; TNP, trigeminal neuropathic pain; UF, unaffected side; V2, the maxillary nerve; V3, the mandibular nerve; WMV, white matter volume.
doi:10.1371/journal.pone.0094300.t003

Results

Included Studies

According to the strategy of literature search (Table 1), in total 81 studies were included as the original set of studies (Figure 1). Among this set, 59 studies were excluded according to the pre-defined exclusion criteria (Table 1B): (1) one study investigating only the healthy control participants; (2) 48 studies applying MRI as a diagnostic tool (e.g., for surgical assessment [46] or examination of vascular pathology [47]); (3) 10 studies focusing on the disorders other than TNP and TMD, including 4 studies of headache (mostly about migraine) and 6 studies of other disorders (Table 1B). In total, 22 studies were included as the final set for qualitative meta-analysis (Figure 1). Full text was retrieved from all the studies. Twenty studies were originally published in English and two in Chinese ([20,27]). Within the final set ($n = 22$), 8 studies exclusively recruited TNP patients; 12 studies exclusively recruited TMD pain patients, and two studies recruited both TNP and TMD pain patients ([10,11]). In total 10 TNP-related and 14 TMD pain-related studies were included.

Demographic and Clinical Profiles

Diagnosis. The studies under review diverted in the diagnostic categories (Table 2). In the TNP studies, 4 out of 10 studies focused exclusively on trigeminal neuralgia (TN), an episodic form of neuropathic pain [48]. The other 6 studies included TNP with a variety of etiologies (e.g., trauma or post-herpetic infection, [8]). The heterogeneity of diagnosis was also found in the TMD studies. Three out of 14 TMD studies focused exclusively on the myofascial-type TMD ([18,26,28]), two on idiopathic (non-traumatic) TMD ([21,22]), and 2 on inflammatory-type TMD (synovitis, [20,27]).

The demographic profiles of the patients. The sample size of the patient group was relatively small ($n < 12$) in two TNP studies [8,14] and in 4 TMD studies [19,20,28,29] (Table 2). There were more females patients recruited than male patients (Table 2). In the TNP studies, the ratio of female to male patients was approximately 2:1. In the TMD studies, the number of female patients was even overwhelmingly higher than the number of the male patients, with eight studies exclusively recruiting only female patients ([13,19,22–26,28]). The age range of the patients in the TNP and the TMD studies was approximately 45–55 y/o and 25–45 y/o, respectively (Table 2). The patients in the TNP studies

Table 4. Experimental design and neuroimaging findings of the included studies: Temporomandibular joint disorder pain.

Source	Experimental design					Major neuroimaging findings on the pain-related brain regions
	Modality	Stimuli	Site	Covariate	Signal	
Jiang 2006	fMRI	Clenching	N/A	-	BOLD	TMD (clenching > resting): R S1/L ACC
Younger 2010	sMRI	-	-	-	GMV	TMD>HC: R aINS/B THA TMD<HC: R S1
Abrahamsen 2010	fMRI	Mechanical	L V3 area	-	BOLD	Stim > No stim: R pINS/R S1
		Hypnosis				Hyperalgesia>Hypoalgesia: L IPL
Nebel 2010	fMRI	Mechanical	R index finger	-	BOLD	TMD>HC: B THA/CL S1/B S2/CL INS/B ACC TMD<HC: CL INS/CL S1/CL S2
Zhao 2011	fMRI	Clenching	R molars	-	BOLD	TMD (CL clenching>resting): B ACC
Gerstner 2011	sMRI	-	-	age	GMV	TMD<HC: L ACC/R aINS
					WMV	TMD>HC: B STG TMD<HC: B ACC
Gustin 2011	sMRI	-	-	age/sex/TBV	GMV	TMD v. HC: n.s.
	fMRI	Mechanical	R bottom lips	-	BOLD	(for localizing ventroposterior THA)
	MRS	-	-	-	NAA/Cr	[THA]: TMD v. HC n.s.
Moayed 2011	sMRI	-	-	age/TIV	GMV	[THA]: TMD v. HC n.s.
				age	CT	TMD>HC: [R S1]
Weissman- Fogel 2011	fMRI	Stroop task		-	BOLD	TMD>HC (cognitive interference): ACC/L S1 TMD>HC (emotional interference): L ACC
Gerstner 2012	MRS	Pressure	R anterior temporalis	-	Glu/Gln/	TMD>HC (NAA/Cho): [L pINS]
			R thumb		NAA/Cho level	
Ichesco 2012	fMRI	Pressure	L anterior temporalis	age	FC	TMD>HC: L aINS-R ACC/R aINS-R ACC
		Resting-state				TMD>HC: L aINS-R ACC/L pINS-L PHG/R aINS-R THA
Moayed 2012	DWI	-	-	age	FA	TMD<HC: [R THA/R S1](nearby)
					SC	TMD>HC: CC-L FP
Salomons 2012	sMRI	-	-	-	CT	Correlated with helplessness- positive: [L SMA], negative: [L MCC/ L PCC]
	DWI				FA	Correlated with helplessness-positive: [cingulum], negative: [CC/ CST]
Gustin 2012	fMRI	Mechanical	IL lower lip/fingers	age/sex	BOLD	No functional reorganization at CL S1
	DWI	-	-	-	FA	[CL S1]: TMD v. HC n.s.
	ASL	-	-	age/sex	CBF	[CL S1]: TMD v. HC n.s.

ACC, anterior cingulate cortex; aINS, anterior insula; ASL, arterial spin labeling; B, bilateral; BOLD, blood-oxygen-level-dependent; CBF, cerebral blood flow; CC, corpus callosum; CL, contralateral; CST, cortical spinal tract; CT, cortical thickness; DWI, diffusion-weighted imaging; FA, fractional anisotropy; FC, functional connectivity; fMRI, functional magnetic resonance imaging; GMV, gray matter volume; IL, ipsilateral; L, left side; MCC, mid-cingulate cortex; MRS, magnetic resonance spectrum; pINS, posterior insula; R, right side; S1, primary somatosensory cortex; S2, secondary somatosensory cortex; SC, structural connectivity (probabilistic tractography); SLF, superior longitudinal fasciculus; sMRI, structural magnetic resonance imaging; STPI, State Trait Personality Inventory; TBV, total brain volume; THA, thalamus; TIV, total intracranial volume; TMD, temporomandibular disorder; V3, the mandibular nerve; WMV, white matter volume.

doi:10.1371/journal.pone.0094300.t004

were, in general, older than the patients in the TMD studies. One study has patients with a mean age >65 y/o ([13]), which were considered the older population. The sex and age profiles of the patients, in general, were consistent with the previous epidemiological findings of the disorders [48].

The clinical profiles of the patients. Most studies set minimal severity of pain as the inclusion criteria, such as a score greater than 4 on a 0–10 visual analogue scale (VAS). The definition of pain severity, however, varied across studies. While some studies defined it as the current pain intensity (e.g., [18,28]), other studies defined it as the average pain over a month (e.g., [21,22,24]) or the pain a week before scanning (e.g., [10,11]). In

general, both the TNP and TMD studies showed pain severity at the moderate level (mean pain intensity <5 on a 0–10 VAS, Table 2). In the TMD studies, the patients with mild pain were included in two studies ([19,23]). The duration of pain, on contrary, varied significantly between studies and between patients (Table 2). In the TNP studies, the mean duration of pain ranged from 4.7 to 8.5 years, across 6 studies. In the TMD studies, the mean duration of pain ranged from 2.5 to 12.4 years, across 11 studies.

Table 5. Results of assessments of risk of bias and study quality: Trigeminal neuropathic pain.

Source	Criteria of patient selection	Status of medication	Standardized assessment	Statistical model	Imaging statistics	Total score
Becerra 2006	Inclusion/Exclusion ¹	1 [Y], 1-dose interval	1 QST, BDI ²	1 FE	1 Generalized mixture model	1 5
Blatow 2009	-	0 [Y]	1 -	0 -	0 Bonferroni correction	1 2
Scrivani 2010	Inclusion/Exclusion	1 [Y], drug screening	1 QST, MADRS	1 RE ³	1 Gaussian mixture model	1 5
Gustin 2011	Liverpool Criteria	1 [Y]	1 BDI, STAI, MPQ	1 RE	1 FDR	1 5
Moisset 2011	Inclusion/Exclusion	1 [Y], 12 hrs	1 QST, NPSI	1 RE	1 uncorrected	0 4
Gustin 2012	Liverpool Criteria	1 [Y]	1 MPQ	1 RE	1 FWE	1 5
Henderson 2013	Liverpool Criteria	1 [Y]	1 MPQ	1 RE	1 FDR	1 5
Obermann 2013	Inclusion/Exclusion	1 [Y]	1 -	0 -	0 FWE	1 3
DeSouza 2013	Inclusion/Exclusion	1 [Y]	1 -	0 Permutation testing ¹	corrected based on permutation testing	1 4
DeSouza 2014	Inclusion/Exclusion	1 [Y]	1 -	0 Permutation testing ¹	TFCE	1 4

BDI, Beck Depression Inventory; BPI, Brief Pain Inventory; FDR: control for false discovery rate; FWE: control for family-wise error; MADRS, Montgomery-Asberg Depression Rating Scale; (s)MPQ, (short-form) McGill Pain Questionnaire; NPSI, neuropathic pain symptom inventory; STAI: State-Trait Anxiety Inventory; TFCE; Threshold-Free Cluster Enhancement [85].

¹Details about the criteria were not found; ²The use of BDI was only noted in Figure S1; ³using FMRIB's local analysis of mixed effects; [Y] denotes that the status of medication was reported.

doi:10.1371/journal.pone.0094300.t005

Experimental Design

Imaging modalities. The TNP studies included 6 investigations on the structural changes (sMRI/DWI = 4/2) and 9 investigations on the functional changes (fMRI/ASL/MRS = 5/2/2). The TMD studies included 8 investigations on the structural changes (sMRI/DWI = 5/3) and 10 investigations on the functional changes (fMRI/ASL/MRS = 7/1/2) (Table 4). In two studies, the fMRI investigations were performed mainly for functionally localizing a specific ROI ([11,12]). These investigations were not included in the subsequent meta-analysis.

Stimulation models and tasks. In the TNP studies, 7 studies have applied mechanical stimuli (brushing) to the subjects ([8–14]) (Table 3). Two studies additionally applied thermal (cold and heat) stimuli ([8,14]) to evoke pain or allodynia. In the TMD studies, 4 studies applied mechanical stimuli to the subjects ([10,11,18,23]) and one study applied pressure stimuli ([19]) to evoke pain. Two studies used a clenching task to evoke pain [20,27]. Behavioral tasks were applied in two studies: one study applied hypnotic modulation to modulate pain experience ([18]) and another study applied the Stroop task to assess the attentional interference related to pain ([25]).

Assessment of Study Quality and Risk of Bias

In general, the included 22 studies showed a moderate to high score of study quality and risk of bias assessment. The score (mean ± standard deviation) of the TNP studies is 4.2 ± 1.0 and that of the TMD studies is 3.7 ± 1.2. There was no significant difference in the assessment score between the two groups (two-tailed independent t-test $p = 0.3$).

Criteria of patient selection. Twenty-two studies have reported the detailed criteria about patient selection (TNP: 9/10; TMD: 13/14). In the TMD studies, the Research Diagnostic Criteria (RDC) [44] was the most frequently adopted diagnostic criteria [11,18,19,21,23,25,28,29].

Status of medication. Nineteen studies have reported the status of medication of the patients (TNP: 10/10; TMD: 9/14). However, only 9 studies have reported that the medications were temporarily discontinued before MRI scanning. Among these

studies, the duration of medications discontinuation varied from 2 weeks to only one drug interval.

Standardized assessment. Standardized assessments of pain, such as the McGill Pain Questionnaire [49,50] or Quantitative Sensory Testing (QST) [51], were performed in some of the studies (TNP: 6/10; TMD: 6/14). The psychological assessments regarding the chronic pain-related moods, such as the Beck Depression Inventory (BDI, [52]) for depression and the State-Trait Anxiety Inventory (STAI) for anxiety, were not widely used.

Statistical model. Twelve studies applied the random-effect (RE) model for the group-wise comparison. With this model, a conclusion drawn from the imaging results can be inferred to the population [53]. The fixed-effect (FE) model was suggested for a study with a small sample size [54]; however, it was only applied in one of the small-sample-size studies [8]. The permutation testing [55], a non-parametric approach for imaging analysis, was applied in four studies [16,17,22,28].

Imaging statistics. Twenty studies have applied some form of correction of multiple comparison in the imaging results (TNP: 9/10; TMD: 11/14). This item of assessment was not applied to one study [29], which only reported findings from an ROI-based but not a whole-brain analysis.

Findings from the Qualitative Meta-analysis

Changes in brain function. The results on brain function included the investigations on BOLD/CBF and MRS studies (Table 7 and Table 8). For both TNP and TMD patients, the S1, the ACC/MCC and the PFC are the most consistently reported regions (S1: 7 studies; ACC/MCC: 8 studies; PFC: 8 studies) (Table 7, Table 8 and Figure S1), while the S2 activation was only reported in 2 studies (Table 7). These findings from BOLD/CBF/MRS changes have revealed predominantly positive changes. The pattern of changes is more consistent in the TNP studies, where three studies have consistently reported an increased BOLD activation at the thalamus, S1, ACC/MCC and PFC [8,13,14]. In contrast, the pattern in the TMD group was less consistent across studies. Notably, concurrent increased/decreased activation was found between the thalamus and the S1 [8,12–14,23], and

Table 6. Results of assessments of risk of bias and study quality: Temporomandibular joint disorder pain.

Source	Criteria of patient selection	Status of medication	Standardized assessment	Statistical model	Imaging statistics	Total score
Jiang 2006	-	0 -	0 -	0 RE	1 uncorrected	0 1
Younger 2010	Inclusion/Exclusion criteria	1 [Y]	1 -	0 -	0 FDR	1 3
Abrahamsen 2010	RDC	1 -	0 SCL, HGSH:A	1 RE	1 FWE	1 4
Nebel 2010	RDC	1 -	0 sMPQ	1 RE ²	1 Cluster-corrected	1 4
Zhao 2011	CDC	1 -	0 SCL-90	1 -	0 -	0 2
Geerstner 2011	RDC	1 3 days ³	1 sMPQ, BPI, STPI	1 Permutation testing	1 corrected based on permutation testing	1 5
Gustin 2011	RDC	1 [Y]	1 BDI, STAI, MPQ	1 RE	1 FDR	1 5
Moayedil 2011	RDC	1 [Y], 24 hrs	1 NEO-FFI	1 -	0 FDR, Bonferroni correction	1 4
Weissman- Fogel 2011	RDC	1 [Y], 24 hrs	1 -	0 -	0 FDR	1 3
Geerstner 2012	RDC	1 2 wks	1 sMPQ, STPI	1 RE	1 ³	0 4
Ichesco 2012	RDC	1 3 days ¹	1 sMPQ, BPI, STPI	1 RE	1 Cluster-corrected	1 5
Moayedil 2012	Inclusion/Exclusion criteria	1 -	0 -	0 Permutation testing	1 TFCE or cluster-mass corrected	1 3
Salomons 2012	Inclusion/Exclusion criteria	1 [Y], 24 hrs	1 PCS	1 -	0 FWE	1 4
Gustin 2012	RDC	1 [Y]	1 MPQ	1 RE	1 FWE	1 5

BDI, Beck Depression Inventory; BPI, Brief Pain Inventory; CDC, Clinical Diagnostic Criteria [84]; FDR: control for family-wise error; HGSH:A, Harvard Group Scale of Hypnotic Susceptibility Form A; (s)MPQ, (short-form) McGill Pain Questionnaire; PCS: Pain Catastrophizing scale; RDC: Research Diagnostic Criteria [44]; SCL, Symptom Check List; STAI: State-Trait Anxiety Inventory; TFCE: Threshold-Free Cluster Enhancement [85].
¹Nonsteroidal anti-inflammatory drugs; ²using FMRIB's local analysis of mixed effects; ³the study directly compared the metabolite level resulted from the selected ROIs. [Y] denotes that the status of medication was reported. doi:10.1371/journal.pone.0094300.t006

Table 7. The findings of meta-analysis on functional changes by pain-related regions: BOLD/CBF.

Source	Positive changes									Negative changes								
	THA	S1	S2	CC	INS	PFC	BG	MT	PAG	THA	S1	S2	CC	INS	PFC	BG	MT	PAG
Trigeminal neuropathic pain																		
Becerra 2006 ¹	PM	2	a	a	mi	↑				↓					↓	↓	↓	
Blatow 2009											*	*						
Scrivani 2010 ²	PF	1	m		smio	↑				↓			a	i				
Moisset 2011 ¹	PM	3b	am	a	i	↑	↑			N/A	N/A	N/A	N/A	N/A	N/A	N/A	N/A	N/A
Gustin 2012 ³											*							
Henderson 2013 ³										*	*							
Temporomandibular joint disorder pain																		
Jiang 2006		2	a		o	↑				N/A	N/A	N/A	N/A	N/A	N/A	N/A	N/A	N/A
Abrahamsen 2010		2			p	m				N/A	N/A	N/A	N/A	N/A	N/A	N/A	N/A	N/A
Nebel 2010	PF	1/3b	m	p				↑		2/1	↓		p					
Zhao 2011			a		mi					N/A	N/A	N/A	N/A	N/A	N/A	N/A	N/A	N/A
Weissman-Fogel 2011 ⁴		1	a		sm	↑	↑			N/A	N/A	N/A	N/A	N/A	N/A	N/A	N/A	N/A
Ichesco 2012 ⁵	PF		a		s			↑		N/A	N/A	N/A	N/A	N/A	N/A	N/A	N/A	N/A

See Table 3 for the abbreviations of the brain regions. N/A: The study did not report the findings of negative changes. The asterisk denotes that the finding was derived from a ROI-specific analysis. Upward and downward arrows denote positive and negative changes, respectively (without showing the sub-region of the change). a, anterior; m, mid; p, posterior; i, inferior; s, superior; o, orbitofrontal; PM, connection with the premotor cortex; PF, connection with the prefrontal cortex. ¹Affected side > Unaffected side; ²the findings shown in 'Decreased activation' represents 'placebo>drug'; ³baseline cerebral blood flow; ⁴effect of cognitive and emotional interference; ⁵increased resting-stated/pain-evoking functional connectivity between the insula and these regions. doi:10.1371/journal.pone.0094300.t007

between the PFC and the basal ganglia [8,13,14,20,25]. Within the PFC, the superior or middle frontal gyrus (i.e., the dorsolateral PFC) was more frequently reported than the medial or orbital part of the PFC.

For the negative changes, a decreased NAA/Cr/GABA level was found in the thalamus only in the TNP but not the TMD patients [11,12]. In contrast, a decreased NAA/Cho level was found in the TMD patients [29] (Table 8). The TNP patients also showed decreased baseline CBF in the thalamus and the S1, which were not reported in the TMD patients [10,12].

Changes in brain structure. The results on brain structure included the investigations on gray matter and white matter (Table 9 and Table 10). For both TNP and TMD studies, there were more findings on negative changes than positive changes (Figure S11). Again, the brain regions with significant changes were predominantly the pain-related regions, including the thalamus, S1, ACC/MCC, and the insula. Concurrent changes were found between the thalamus and the S1 [11,15,17,22], and

additionally between the ACC/MCC and the insula [15,17,28]. Changes on white matter were exclusively negative changes. Three studies have consistently reported decreased FA nearby the S1 [10,16,22] (Table 10).

Statistical Analysis

The correlation analysis and the paired Wilcoxon test were performed on the regional changes of the pain-related ROIs between the TNP and the TMD groups, separately for the functional studies with positive changes and the structural studies with negative changes. In the functional studies with positive changes, the paired Wilcoxon test failed to reject the null hypothesis (W = 1.56, p = 0.12), and the correlation analysis showed a significant correlation (Spearman's rho = 0.70, p = 0.035) (Figure 2A–B). In contrast, in the structural studies with negative changes, the paired Wilcoxon test rejected the null hypothesis (W = 2.28, p = 0.023), and the correlation analysis did not show a significant correlation (Spearman's rho = 0.61,

Table 8. The findings of meta-analysis on functional changes by pain-related regions: MRS.

Source	Positive changes									Negative changes								
	THA	S1	S2	CC	INS	PFC	BG	MT	PAG	THA	S1	S2	CC	INS	PFC	BG	MT	PAG
Trigeminal neuropathic pain																		
Gustin 2011 ¹											*							
Henderson 2013 ²											*							
Temporomandibular joint disorder pain																		
Gerstner 2012 ³					p*													

See Table 3 for the abbreviations of the brain regions. The asterisk denotes that the finding was derived from a ROI-specific analysis. p, posterior. ¹NAA/Cr level; ²GABA level; ³NAA/Cho level. doi:10.1371/journal.pone.0094300.t008

Table 9. The findings of meta-analysis on structural changes by pain-related regions: Gray matter.

Source	Positive changes									Negative changes								
	THA	S1	S2	CC	INS	PFC	BG	MT	PAG	THA	S1	S2	CC	INS	PFC	BG	MT	PAG
Trigeminal neuropathic pain																		
Gustin 2011					p					PF	3b			a				↓
Obermann 2013										TP	1	↓	a	a	dlo			↓
DeSouza 2013 ¹	PF ²	2/1				pl	↑	↑	↑				a	p	o			
Temporomandibular joint disorder pain																		
Younger 2010	PF				a	i	↑				3b							
Gerstner 2011													m	a	i			↓
Moayed 2011 ¹		3b*				vl*												

See Table 3 for the abbreviations of the brain regions. The asterisk denotes that the finding was derived from a ROI-specific analysis. Upward and downward arrows denote positive and negative changes, respectively (without showing the sub-region of the change). a, anterior; m, mid; p, posterior; i, inferior; orbitofrontal; vl, ventrolateral; dl, dorsolateral; PF, connection with the prefrontal cortex; TP, connection with the temporal cortex.
¹cortical thickness; ²gray matter volume.
 doi:10.1371/journal.pone.0094300.t009

p = 0.083) (Figure 2C–D). Therefore, according to our criteria, the regional changes from the functional studies with positive changes showed similar brain signature pattern between TND and TMD, and the regional changes from the structural studies with negative changes showed distinct brain signature pattern between TND and TMD.

Discussion

Common Brain Signature related to TNP and TMD pain

We hypothesized that the two chronic orofacial pain disorders are associated with a common pattern of brain signature. This hypothesis was partially supported. The statistical analysis revealed similar pattern of brain signature only in the functional studies with positive changes (Table 7–10 and Figure 2A–B). In contrast, the structural studies with negative changes showed distinct pattern (Table 7–10 and Figure 2C–D). Among the major pain-related ROIs, changes at the thalamus, the S1, the ACC/MCC, and the insula were frequently reported. In contrast, changes at the S2 were relatively fewer. The significance of each of the regions was discussed as follows.

The thalamus and the S1. Both the thalamus and the S1 are critical regions of the trigeminal nerve system [56] and play a major role in the thalamocortical pathway [12]. In line with these

findings, we found that the thalamus and S1 were the most frequently reported brain regions in functional and structural investigations. Notably, the thalamus and the S1 showed a higher frequency of concurrent changes. In the 11 studies that showed functional or structural changes in the thalamus, 8 studies showed concurrent changes in the S1 (positive changes: [8,13,14,17,23]; negative changes: [11,12,15]). The findings highlight the role of the thalamocortical pathway in chronic pain [12,34].

The S2. Compared to the other pain-related brain regions, the S2 showed a lesser degree of changes in both brain function and structure. The S2, together with the insula and the mid-cingulate cortex, is considered as the key brain region evoked by noxious stimuli [57]. Its activation reliably predicted the experience of acute pain [58,59]; however, its role in chronic pain is more elusive[33]. Animal studies have shown that both the S1 and S2 show reorganization after peripheral lesioning [60]. Human fMRI findings revealed that changes in individual perceptual threshold is linearly correlated with the degree of re-organization of the S1, but not the S2 [61]. Therefore, the S2 changes may predominantly reflect a transient change of pain experience (e.g., acute evoked pain), rather than a long-term alteration in pain processing.

The ACC/MCC and the insula. Both the ACC/MCC and the insular activation is frequently associated with noxious stimuli

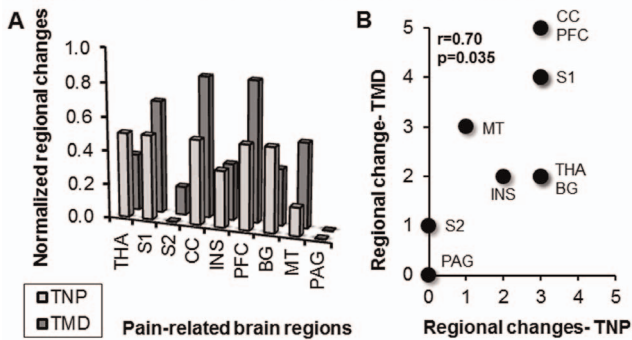
Table 10. The findings of meta-analysis on structural changes by pain-related regions: White matter.

Source	Positive changes									Negative changes								
	THA	S1	S2	CC	INS	PFC	BG	MT	PAG	THA	S1	S2	CC	INS	PFC	BG	MT	PAG
Trigeminal neuropathic pain																		
Gustin 2012												↓						
DeSouza 2014 ¹												↓	↓	m				↓
Temporomandibular joint disorder pain																		
Gerstner 2011 ²													a		smi			
Moayed 2012										*	*							

See Table 3 for the abbreviations of the brain regions. The asterisk denotes that the finding was derived from a ROI-specific analysis. Downward arrows denote negative changes (without showing the sub-region of the change). a, anterior; m, mid; i, inferior; s, superior.
¹The brain regions affected by the white matter tracts, inferred from the Discussion; ²white matter volume.
 doi:10.1371/journal.pone.0094300.t010

Comparison of brain activation pattern between TNP and TMD

Functional studies (the findings of positive changes)



Structural studies (the findings of negative changes)

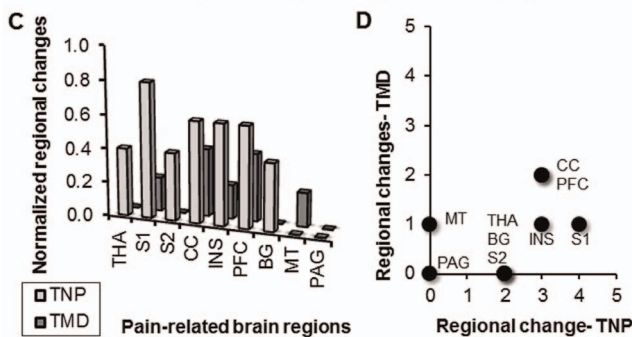


Figure 2. Results of the statistical analysis. Panel (A) and (B) show the pattern of brain signature from the functional studies with positive changes. Between TNP and TMD, the overall pattern did not significantly differ (A), and the pattern across each ROI was significantly correlated (B). Panel (C) and (D) show the pattern of brain signature from the structural studies with negative changes. Between TNP and TMD, the overall pattern significantly differed (C), and the pattern across each ROI was not significantly correlated (D). See Table 3 for the abbreviations.

doi:10.1371/journal.pone.0094300.g002

and encodes pain experience [57,59]. The ACC activation was associated with the magnitude of subjective pain, while the MCC activation was associated with the magnitude of stimuli intensity [34,62]. In terms of brain connectivity, the ACC and the insula are the major regions of the salience network [63]. Recent evidence has revealed that altered activity of the salience network is associated with the endogenous and self-sustaining nature of chronic pain [64]. In migraine patients, the salience network showed aberrant intrinsic connectivity [65]. In terms of brain structure, the pain sensitizers showed significant reduction in gray matter density in the ACC and the insula [66]. In line with the findings, in the patients with chronic orofacial pain, we found predominantly positive changes in brain function and negative changes in brain structure in the regions. The finding may suggest an altered subjective experience of pain in the chronic orofacial pain patients.

Distinct Brain Signature related to TNP and TMD pain

In contrast to the similarity of activation pattern from the functional studies with positive changes, in the structural studies with negative changes, we found distinct brain signature, which may be specific to the TNP and TMD patients. Firstly, the TMD patients showed overall fewer negative changes in brain structure

than the TNP patients (Figure 2C). In the TNP patients, the negative changes may indicate a loss-of-inhibition mechanism in modulating the thalamocortical pathway [12]. In addition, there were more concurrent changes in brain function between the thalamus and the S1 in the TNP studies (Table 7–10), suggesting that in the TNP patients, pain are more associated with the thalamocortical pathway, compared to the TMD patients. A recent meta-analysis has shown that, in the patients with neuropathic pain, the thalamus showed hypoactivity during resting but hyperactivity during allodynia [67]. The resting hypoactivity may be associated with sensory deafferentation related to neuropathy [67]. Our findings supported the proposal by showing decreased baseline activity (including CBF and MRS signals) and increased stimuli-evoked activity at the thalamus and the S1 ([10–12], see Table 7 and Table 8).

The functional studies showed that activation at the aINS was seen mainly in the TNP group, while activation at the pINS was seen in the TMD group (Table 7). It has been widely established that the anterior and the posterior sub-division of the insula play a different role in pain processing. The aINS and the pINS, respectively, showed a greater degree of functional and structural connection with the cognitive-affective network (e.g., the PFC) and the sensory discriminative network related to pain (e.g., the S1 and S2) [68,69]. The segregation could be explained based on each etiology and symptomatology. In TNP patients, pain would like to emerge spontaneous and continuously, and therefore the aINS would play a major role in shaping such a salient experience. By contrast, in TMD patients, pain is more likely to be triggered from the peripheral tissue, and therefore a sensory-discriminative network, including the pINS, would be involved.

It should be noted that both the patterns of insula and thalamus connectivity were indirectly concluded by relatively small samples. Still, the findings strengthen the general hypothesis that plasticity in connectational pattern, rather than regional activity, would account for the difference in pain experience [70,71]. The findings therefore highlight the importance for investigation the chronic orofacial pain at the level of brain connectome.

The Role of Cognitive-Affective Network

Supporting our third hypothesis, we found profound functional and structural changes in the PFC, including the dorsolateral PFC (the superior or middle frontal gyrus), the ventrolateral PFC (the inferior frontal gyrus) and the orbitofrontal cortex (Table 7 and Figure 2). The orbitofrontal cortex plays a critical role in coping with pain and shows deficit activation in the neuropathic pain patients [67]. The dorsolateral and ventrolateral PFC play a key role in modulating pain, particularly via cognitive re-appraisal [6]. The consistent engagement of the PFC in both TNP and TMD pain highlights the role of psychological factors in chronic orofacial pain [38].

Notably, we found concurrent functional and structural changes between the PFC and the basal ganglia, and partly with the limbic system. The basal ganglia are the neural substrates critical for motivation and reward learning [72], and the basal ganglia-cortical loop is associated with the prediction of future reward [73]. The experience of pain relief, as a reward, is particularly important to chronic pain patients. The changes of the basal ganglia-PFC pathways may be associated with the transition from acute to chronic pain [34].

Further Considerations and Clinical Implications

The current review showed a great variation in the criteria of patient selection and the study designs across the studies (Table 5 and Table 6). Either TNP or TMD can be categorized into

different sub-types, which differ in etiology and symptomatology. For example, trigeminal neuralgia is associated with an episodic shooting and sharp pain, while the painful trigeminal neuropathy is associated with a continuous dull or sharp pain [48]. Therefore, it is crucial to systematically investigate the signs and symptoms presented by the patient group. For example, the thalamic hypoactivity may be associated with sensory deafferentation [67], and QST would be a critical tool for investigating the thalamic changes associated with the neuropathic pain. In addition, the changes in brain function and structure can be influenced by a variety of factors, such as age [74–76] and chronic distress [77]. Therefore, to sharpen the association between symptoms and brain changes, it would be important to clarify the effect from these confounding factors.

A general theme underlying the disease-related alterations in brain signature is neuroplasticity, which refers to the changes in brain organization that account for various forms of behavioral modifiability [78]. Brain neuroplasticity related to pain may represent the somatic memories of pain, that are sculpted by injury (e.g., peripheral noxious stimuli) or experience (e.g., pain-related distress) [79]. Therefore, investigations on neuroplasticity of brain function and structure may help explain how the experience of chronic orofacial pain is shaped. Plasticity referred to ‘an intrinsic property of the nervous system retained throughout a lifespan’, which can be molded by environmental changes and experiences [80]. In contrast, the term *neuroelasticity* referred to an adaptive process of plastic effect, in which functional or structural plasticity of the brain occurs dynamically in accordance with the addition or removal of stimuli [81]. From the clinical perspective, the concept of adaptive neuroelasticity could be useful, because it regards the brain reorganization as a dynamic course, which corresponds to the exacerbation or relief of the illness status. For example, in patients with chronic low back pain, the pain-related decrease in cortical thickness was reversed after surgical treatment [82]. In the patients with painful osteoarthritis, the pain-related decrease in GMV was reversed to the level observed in healthy controls, after successful surgery [81,83]. The neural mechanisms of such elastic

and adaptive changes in brain organization are still unclear. However, these recent findings suggest that the plastic changes in brain functions and structure, as a brain marker, would help the clinicians not only in prognosis but also in assessing the effect of the treatment of chronic orofacial pain.

Conclusions

The current review has revealed that TNP and TMD patients showed a common pattern of brain signature regarding changes in brain function. In contrast, the pattern of structural changes differed from each other. The alterations in the thalamocortical pathway differed between the TNP and the TMD pain patients. In addition, changes in the PFC and the basal ganglia suggested the role of cognitive modulation and reward processing in chronic orofacial pain. The findings highlight the potential for brain neuroimaging as an investigating tool for understanding chronic orofacial pain.

Supporting Information

Figure S1 Results of qualitative meta-analysis. The charts revealed the number of studies that showed significant changes in each of the pain-related regions. Figure S1A–C showed both functional and structural changes; Figure S1D–F showed functional changes, and Figure S1G–I showed structural changes, in trigeminal neuropathic pain (TNP), temporomandibular joint disorder (TMD) pain, and both disorders (TNP+TMD). (TIF)

Checklist S1 PRISMA checklist. (DOC)

Author Contributions

Conceived and designed the experiments: CSL. Analyzed the data: CSL. Contributed reagents/materials/analysis tools: CSL. Wrote the paper: CSL.

References

- Pan HC, Sheehan J, Huang CF, Sheu ML, Yang DY, et al. (2010) Quality-of-life outcomes after Gamma Knife surgery for trigeminal neuralgia. *J Neurosurg* 113 Suppl: 191–198.
- Renner-Sitar K, Celebic A, Mehulic K, Petricevic N (2013) Factors related to oral health related quality of life in TMD patients. *Coll Antropol* 37: 407–413.
- Auvenshine RC (2007) Temporomandibular disorders: associated features. *Dent Clin North Am* 51: 105–127, vi.
- DaSilva AF, DosSantos MF (2012) The role of sensory fiber demography in trigeminal and postherpetic neuralgias. *J Dent Res* 91: 17–24.
- Murray GM, Peck CC (2007) Orofacial pain and jaw muscle activity: a new model. *J Orofac Pain* 21: 263–278; discussion 279–288.
- Wiech K, Ploner M, Tracey I (2008) Neurocognitive aspects of pain perception. *Trends Cogn Sci* 12: 306–313.
- Sarlani E, Greenspan JD (2005) Why look in the brain for answers to temporomandibular disorder pain? *Cells Tissues Organs* 180: 69–75.
- Becerra L, Morris S, Bazes S, Gostic R, Sherman S, et al. (2006) Trigeminal neuropathic pain alters responses in CNS circuits to mechanical (brush) and thermal (cold and heat) stimuli. *J Neurosci* 26: 10646–10657.
- Blatow M, Nennig E, Sarpaczki E, Reinhardt J, Schlieter M, et al. (2009) Altered somatosensory processing in trigeminal neuralgia. *Hum Brain Mapp* 30: 3495–3508.
- Gustin SM, Peck CC, Cheney LB, Macey PM, Murray GM, et al. (2012) Pain and plasticity: is chronic pain always associated with somatosensory cortex activity and reorganization? *J Neurosci* 32: 14874–14884.
- Gustin SM, Peck CC, Wilcox SL, Nash PG, Murray GM, et al. (2011) Different pain, different brain: thalamic anatomy in neuropathic and non-neuropathic chronic pain syndromes. *J Neurosci* 31: 5956–5964.
- Henderson LA, Peck CC, Petersen ET, Rae CD, Youssef AM, et al. (2013) Chronic pain: lost inhibition? *J Neurosci* 33: 7574–7582.
- Moisset X, Villain N, Ducreux D, Serrie A, Cunin G, et al. (2011) Functional brain imaging of trigeminal neuralgia. *Eur J Pain* 15: 124–131.
- Scrivani S, Wallin D, Moulton EA, Cole S, Wasan AD, et al. (2010) A fMRI evaluation of lamotrigine for the treatment of trigeminal neuropathic pain: pilot study. *Pain Med* 11: 920–941.
- Obermann M, Rodriguez-Raecke R, Naegel S, Holle D, Mueller D, et al. (2013) Gray matter volume reduction reflects chronic pain in trigeminal neuralgia. *Neuroimage* 74: 352–358.
- Desouza DD, Hodaic M, Davis KD (2014) Abnormal Trigeminal Nerve Microstructure and Brain White Matter in Idiopathic Trigeminal Neuralgia. *Pain*.
- Desouza DD, Moayed M, Chen DQ, Davis KD, Hodaic M (2013) Sensorimotor and Pain Modulation Brain Abnormalities in Trigeminal Neuralgia: A Paroxysmal, Sensory-Triggered Neuropathic Pain. *PLoS One* 8: e66340.
- Abrahamsen R, Dietz M, Lodahl S, Roepstorff A, Zachariae R, et al. (2010) Effect of hypnotic pain modulation on brain activity in patients with temporomandibular disorder pain. *Pain* 151: 825–833.
- Ichesco E, Quintero A, Clauw DJ, Peltier S, Sundgren PM, et al. (2012) Altered functional connectivity between the insula and the cingulate cortex in patients with temporomandibular disorder: a pilot study. *Headache* 52: 441–454.
- Jiang T, Li J, Jin Z, Wang YW, Feng HL, et al. (2006) [Comparison of atypical orofacial pain and temporomandibular disorders synovitis pain processing in the human brain using functional magnetic resonance imaging]. *Zhonghua Kou Qiang Yi Xue Za Zhi* 41: 670–673.
- Moayed M, Weissman-Fogel I, Crawley AP, Goldberg MB, Freeman BV, et al. (2011) Contribution of chronic pain and neuroticism to abnormal forebrain gray matter in patients with temporomandibular disorder. *Neuroimage* 55: 277–286.
- Moayed M, Weissman-Fogel I, Salomons TV, Crawley AP, Goldberg MB, et al. (2012) White matter brain and trigeminal nerve abnormalities in temporomandibular disorder. *Pain* 153: 1467–1477.
- Nebel MB, Folger S, Tommerdahl M, Hollins M, McGlone F, et al. (2010) Temporomandibular disorder modifies cortical response to tactile stimulation. *J Pain* 11: 1083–1094.

24. Salomons TV, Moayed M, Weissman-Fogel I, Goldberg MB, Freeman BV, et al. (2012) Perceived helplessness is associated with individual differences in the central motor output system. *Eur J Neurosci* 35: 1481–1487.
25. Weissman-Fogel I, Moayed M, Tenenbaum HC, Goldberg MB, Freeman BV, et al. (2011) Abnormal cortical activity in patients with temporomandibular disorder evoked by cognitive and emotional tasks. *Pain* 152: 384–396.
26. Younger JW, Shen YF, Goddard G, Mackey SC (2010) Chronic myofascial temporomandibular pain is associated with neural abnormalities in the trigeminal and limbic systems. *Pain* 149: 222–228.
27. Zhao YP, Ma XC, Jin Z, Li K, Liu G, et al. (2011) Cerebral activation during unilateral clenching in patients with temporomandibular joint synovitis and biting pain: an functional magnetic resonance imaging study. *Chin Med J (Engl)* 124: 2136–2143.
28. Gerstner G, Ichesco E, Quintero A, Schmidt-Wilcke T (2011) Changes in regional gray and white matter volume in patients with myofascial-type temporomandibular disorders: a voxel-based morphometry study. *J Orofac Pain* 25: 99–106.
29. Gerstner GE, Gracely RH, Deebajah A, Ichesco E, Quintero A, et al. (2012) Posterior insular molecular changes in myofascial pain. *J Dent Res* 91: 485–490.
30. Button KS, Ioannidis JP, Mokrysz C, Nosek BA, Flint J, et al. (2013) Power failure: why small sample size undermines the reliability of neuroscience. *Nat Rev Neurosci* 14: 365–376.
31. Zatorre RJ, Fields RD, Johansen-Berg H (2012) Plasticity in gray and white: neuroimaging changes in brain structure during learning. *Nat Neurosci* 15: 528–536.
32. Poldrack RA (2000) Imaging brain plasticity: conceptual and methodological issues—a theoretical review. *Neuroimage* 12: 1–13.
33. Apkarian AV, Bushnell MC, Treede RD, Zubieta JK (2005) Human brain mechanisms of pain perception and regulation in health and disease. *Eur J Pain* 9: 463–484.
34. Apkarian AV, Hashmi JA, Baliki MN (2011) Pain and the brain: specificity and plasticity of the brain in clinical chronic pain. *Pain* 152: S49–64.
35. Cauda F, Sacco K, Duca S, Cocito D, D'Agata F, et al. (2009) Altered resting state in diabetic neuropathic pain. *PLoS One* 4: e4542.
36. Schaible HG (2012) Mechanisms of chronic pain in osteoarthritis. *Curr Rheumatol Rep* 14: 549–556.
37. Walton KD, Dubois M, Llinas RR (2010) Abnormal thalamocortical activity in patients with Complex Regional Pain Syndrome (CRPS) type I. *Pain* 150: 41–51.
38. Gustin SM, Wilcox SL, Peck CC, Murray GM, Henderson LA (2011) Similarity of suffering: equivalence of psychological and psychosocial factors in neuropathic and non-neuropathic orofacial pain patients. *Pain* 152: 825–832.
39. Liberati A, Altman DG, Tetzlaff J, Mulrow C, Gotzsche PC, et al. (2009) The PRISMA statement for reporting systematic reviews and meta-analyses of studies that evaluate health care interventions: explanation and elaboration. *PLoS Med* 6: e1000100.
40. Ellingson BM, Mayer E, Harris RJ, Ashe-McNally C, Naliboff BD, et al. (2013) Diffusion tensor imaging detects microstructural reorganization in the brain associated with chronic irritable bowel syndrome. *Pain* 154: 1528–1541.
41. Feraco P, Bacci A, Pedrabissi F, Passamonti L, Zampogna G, et al. (2011) Metabolic abnormalities in pain-processing regions of patients with fibromyalgia: a 3T MR spectroscopy study. *AJNR Am J Neuroradiol* 32: 1585–1590.
42. Wasan AD, Loggia ML, Chen LQ, Napadow V, Kong J, et al. (2011) Neural correlates of chronic low back pain measured by arterial spin labeling. *Anesthesiology* 115: 364–374.
43. Poldrack RA, Fletcher PC, Henson RN, Worsley KJ, Brett M, et al. (2008) Guidelines for reporting an fMRI study. *Neuroimage* 40: 409–414.
44. Dworkin SF, LeResche L (1992) Research diagnostic criteria for temporomandibular disorders: review, criteria, examinations and specifications, critique. *J Craniomandib Disord* 6: 301–355.
45. Behrens TE, Johansen-Berg H, Woolrich MW, Smith SM, Wheeler-Kingshott CA, et al. (2003) Non-invasive mapping of connections between human thalamus and cortex using diffusion imaging. *Nat Neurosci* 6: 750–757.
46. Zahra H, Teh BS, Paulino AC, Yoshor D, Trask T, et al. (2009) Stereotactic radiosurgery for trigeminal neuralgia utilizing the BrainLAB Novalis system. *Technol Cancer Res Treat* 8: 407–412.
47. Yang J, Simonson TM, Ruprecht A, Meng D, Vincent SD, et al. (1996) Magnetic resonance imaging used to assess patients with trigeminal neuralgia. *Oral Surg Oral Med Oral Pathol Oral Radiol Endod* 81: 343–350.
48. Leeuw d (2008) Orofacial Pain: Guidelines for Assessment, Diagnosis, and Management: Quintessence Pub Co.
49. Melzack R (1987) The short-form McGill Pain Questionnaire. *Pain* 30: 191–197.
50. Melzack R (1975) The McGill Pain Questionnaire: major properties and scoring methods. *Pain* 1: 277–299.
51. Rolke R, Baron R, Maier C, Tolle TR, Treede RD, et al. (2006) Quantitative sensory testing in the German Research Network on Neuropathic Pain (DFNS): standardized protocol and reference values. *Pain* 123: 231–243.
52. Beck AT, Ward CH, Mendelson M, Mock J, Erbaugh J (1961) An inventory for measuring depression. *Arch Gen Psychiatry* 4: 561–571.
53. Mumford JA, Poldrack RA (2007) Modeling group fMRI data. *Soc Cogn Affect Neurosci* 2: 251–257.
54. Friston KJ, Holmes AP, Worsley KJ (1999) How many subjects constitute a study? *Neuroimage* 10: 1–5.
55. Nichols TE, Holmes AP (2002) Nonparametric permutation tests for functional neuroimaging: a primer with examples. *Hum Brain Mapp* 15: 1–25.
56. DaSilva AF, Becerra L, Makris N, Strassman AM, Gonzalez RG, et al. (2002) Somatotopic activation in the human trigeminal pain pathway. *J Neurosci* 22: 8183–8192.
57. Duerden EG, Albanese MC (2013) Localization of pain-related brain activation: a meta-analysis of neuroimaging data. *Hum Brain Mapp* 34: 109–149.
58. Brodersen KH, Wiech K, Lomakina EI, Lin CS, Buhmann JM, et al. (2012) Decoding the perception of pain from fMRI using multivariate pattern analysis. *Neuroimage* 63: 1162–1170.
59. Wager TD, Atlas LY, Lindquist MA, Roy M, Woo CW, et al. (2013) An fMRI-based neurologic signature of physical pain. *N Engl J Med* 368: 1388–1397.
60. Tandon S, Kambi N, Lazar L, Mohammed H, Jain N (2009) Large-scale expansion of the face representation in somatosensory areas of the lateral sulcus after spinal cord injuries in monkeys. *J Neurosci* 29: 12009–12019.
61. Pleger B, Villringer A (2013) The human somatosensory system: from perception to decision making. *Prog Neurobiol* 103: 76–97.
62. Baliki MN, Geha PY, Apkarian AV (2009) Parsing pain perception between nociceptive representation and magnitude estimation. *J Neurophysiol* 101: 875–887.
63. Taylor KS, Seminowicz DA, Davis KD (2009) Two systems of resting state connectivity between the insula and cingulate cortex. *Hum Brain Mapp* 30: 2731–2745.
64. Otri A, Guendel H, Wohlschlagel A, Zimmer C, Noll-Hussong M (2013) Frequency shifts in the anterior default mode network and the salience network in chronic pain disorder. *BMC Psychiatry* 13: 84.
65. Xue T, Yuan K, Zhao L, Yu D, Dong T, et al. (2012) Intrinsic brain network abnormalities in migraines without aura revealed in resting-state fMRI. *PLoS One* 7: e52927.
66. Stankewitz A, Valet M, Schulz E, Woller A, Sprenger T, et al. (2013) Pain sensitizers exhibit grey matter changes after repetitive pain exposure: A longitudinal voxel-based morphometry study. *Pain* 154: 1732–1737.
67. Garcia-Larrea L, Peyron R (2013) Pain matrices and neuropathic pain matrices: a review. *Pain*.
68. Augustine JR (1996) Circuitry and functional aspects of the insular lobe in primates including humans. *Brain Res Brain Res Rev* 22: 229–244.
69. Deen B, Pitskel NB, Pelphrey KA (2011) Three systems of insular functional connectivity identified with cluster analysis. *Cereb Cortex* 21: 1498–1506.
70. Bolwerk A, Seifert F, Maihofner C (2013) Altered Resting-State Functional Connectivity in Complex Regional Pain Syndrome. *J Pain*.
71. Mansour AR, Baliki MN, Huang L, Torbey S, Herrmann KM, et al. (2013) Brain white matter structural properties predict transition to chronic pain. *Pain* 154: 2160–2168.
72. Yin HH, Ostlund SB, Balleine BW (2008) Reward-guided learning beyond dopamine in the nucleus accumbens: the integrative functions of cortico-basal ganglia networks. *Eur J Neurosci* 28: 1437–1448.
73. Tanaka SC, Doya K, Okada G, Ueda K, Okamoto Y, et al. (2004) Prediction of immediate and future rewards differentially recruits cortico-basal ganglia loops. *Nat Neurosci* 7: 887–893.
74. Mahncke HW, Bronstone A, Merzenich MM (2006) Brain plasticity and functional losses in the aged: scientific bases for a novel intervention. *Prog Brain Res* 157: 81–109.
75. Moayed M, Weissman-Fogel I, Salomons TV, Crawley AP, Goldberg MB, et al. (2012) Abnormal gray matter aging in chronic pain patients. *Brain Res* 1456: 82–93.
76. Ceko M, Bushnell MC, Fitzcharles MA, Schweinhardt P (2013) Fibromyalgia interacts with age to change the brain. *Neuroimage Clin* 3: 249–260.
77. McEwen BS, Morrison JH (2013) The brain on stress: vulnerability and plasticity of the prefrontal cortex over the life course. *Neuron* 79: 16–29.
78. Berlucchi G, Buchtel HA (2009) Neuronal plasticity: historical roots and evolution of meaning. *Exp Brain Res* 192: 307–319.
79. Melzack R,Coderre TJ, Katz J, Vaccarino AL (2001) Central neuroplasticity and pathological pain. *Ann N Y Acad Sci* 933: 157–174.
80. Pascual-Leone A, Amedi A, Fregni F, Merabet LB (2005) The plastic human brain cortex. *Annu Rev Neurosci* 28: 377–401.
81. Gwilym SE, Filippini N, Douaud G, Carr AJ, Tracey I (2010) Thalamic atrophy associated with painful osteoarthritis of the hip is reversible after arthroplasty: a longitudinal voxel-based morphometric study. *Arthritis Rheum* 62: 2930–2940.
82. Seminowicz DA, Naso L, Hatami-Khoroushahi Z, Fallatah S, et al. (2011) Effective treatment of chronic low back pain in humans reverses abnormal brain anatomy and function. *J Neurosci* 31: 7540–7550.
83. Rodriguez-Raecke R, Niemeier A, Ihle K, Ruether W, May A (2009) Brain gray matter decrease in chronic pain is the consequence and not the cause of pain. *J Neurosci* 29: 13746–13750.
84. Truelove EL, Sommers EE, LeResche L, Dworkin SF, Von Korff M (1992) Clinical diagnostic criteria for TMD. New classification permits multiple diagnoses. *J Am Dent Assoc* 123: 47–54.
85. Smith SM, Nichols TE (2009) Threshold-free cluster enhancement: addressing problems of smoothing, threshold dependence and localisation in cluster inference. *Neuroimage* 44: 83–98.