

Keywords: castrate-resistant prostate cancer; testosterone levels; biomarkers

Prognostic and predictive value of plasma testosterone levels in patients receiving first-line chemotherapy for metastatic castrate-resistant prostate cancer

A G de Liaño¹, O Reig², B Mellado², C Martín¹, E U Rull¹ and J P Maroto^{*,1}

¹Medical Oncology and Biochemistry Departments, Hospital de la Santa Creu i Sant Pau, Mas Casanovas s/n, 08025 Barcelona, Spain and ²Medical Oncology Department, Hospital Clinic, Carrer Villarroel 170, 08036 Barcelona, Spain

Background: Biomarkers for metastatic castration-resistant prostatic cancer (mCRPC) are an unmet medical need.

Methods: The prognostic and predictive value for survival and response to salvage hormonal therapy (SHT) of baseline testosterone level (TL) was analysed in a cohort of 101 mCRPC patients participating in 9 non-hormonal first-line chemotherapy phase II–III trials. Inclusion criteria in all trials required a TL of $<50\text{ ng dl}^{-1}$.

Results: Median age: 70 years; visceral metastases: 19.8%; median prostate-specific antigen (PSA): 50.7 ng ml^{-1} ; median TL: 11.5 ng dl^{-1} . Median overall survival (OS; 24.5 months) was significantly longer if baseline TL was above (High TL; $n=52$) than under (Low TL; $n=49$) the TL median value (32.7 vs 22.4 months, respectively; $P=0.0162$, hazard ratio (HR)=0.6). The presence of anaemia was an unfavourable prognostic factor (median OS: 20.6 vs 28.4 months; $P=0.0025$, HR=1.88 (CI95%: 1.01–3.48)). Patients presenting both anaemia and low testosterone had a worse outcome compared to those with one or none of them (median OS: 17.9 vs 22.4 vs 38.1 months; $P=0.0024$). High vs Low TL was associated with PSA response rate (55.6% vs 21.7%) in 41 patients receiving SHT.

Conclusion: Testosterone level under castration range was a prognostic factor for survival mCRPC patients. The PSA response to SHT differed depending on TLs. Testosterone levels might help in treatment decision.

Castrate state has been defined as a testosterone plasma level from 20 to 50 ng dl^{-1} . Today, it is accepted by consensus that target testosterone level (TL) for androgen-deprivation therapy involving the use of luteinising hormone-releasing hormone (LH-RH) agonists must be $<50\text{ ng dl}^{-1}$ (1.7 nmol l^{-1}). Docetaxel has been considered as the gold standard treatment for patients with metastatic prostate cancer progressing under castrate levels of testosterone. In the recent years, we have contemplated the arrival of new therapeutic options, either chemotherapy (CT) with cabazitaxel or hormone therapy with enzalutamide or abiraterone. Enzalutamide (Scher *et al*, 2012) and abiraterone (de Bono *et al*, 2011) have proven efficacy for

both patients with metastatic castration-resistant prostatic cancer (mCRPC) progressing after docetaxel and in first-line therapy for asymptomatic patients or for those with low symptoms (Ryan *et al*, 2013a; Preval trial, 2013). Cabazitaxel provided a benefit in survival for those patients progressing after docetaxel-based CT (de Bono *et al*, 2010). Although survival has improved, necessity of optimisation of therapy together with some small preliminary reports of cross-resistance between abiraterone and enzalutamide (Loriot *et al*, 2013; Noonan *et al*, 2013) or abiraterone and docetaxel (Mezynski *et al*, 2012) have raised the necessity of biomarkers to help the right choice of therapy for each individual patient.

*Correspondence: Dr JP Maroto; E-mail: jmaroto@santpau.cat

Received 16 December 2013; revised 12 March 2014; accepted 15 March 2014; published online 10 April 2014

© 2014 Cancer Research UK. All rights reserved 0007–0920/14

In patients receiving LH-RH agonist or surgical castration, testosterone can still be detected in plasma. Baseline TL, although under the definition of castration, has been suggested to be both prognostic for survival (Morote *et al*, 2007) and predictive of response to subsequent hormonal manoeuvres (Hashimoto *et al*, 2011).

Looking to new prognostic and predictive values for survival in mCRPC, we analysed the role of baseline TL and other potential factors (such as haemoglobin) in a cohort of patients with mCRPC. In addition, we analysed the probability of response to salvage hormone therapy (SHT) upon progression to first-line treatment.

PATIENTS AND METHODS

Study population. To have a homogeneous cohort, only patients with histologically confirmed metastatic prostate cancer (mCRPC) participating from August 2006 until September 2012 in trials in two single institutions in Spain were included in this analysis. Patients were recruited from nine different non-hormonal first-line CT phase II–III trials. Follow-up was until death or last contact date.

All trials uniformly required, as inclusion criteria, a surgical or medical castration and confirmatory castrate levels of testosterone (TL < 50 ng dl⁻¹). Testosterone level was determined at the screening blood analysis, using an automated immunoassay (Testosterone, ARCHITECT system I 2000 [B7K730], Abbott, Longford, Ireland; or Testosterone II, Elecsys; Roche, Mannheim, Germany) within 1 month before starting the first-line CT treatment. The protocol for collection and measurement of TLs was performed according to the manufacturer's instructions (Testosterone I Architect 2006 system package insert; Abbott Diagnostics Division Lisnamuck, Longford Co. Longford, Ireland; B7K730; or Testosterone II Immunoassay Elecsys 2010 System Product Information; Roche Diagnostics GmbH, Mannheim, Germany). All patients gave their informed consent in written for blood testing. Disease progression was defined as documented osseous or soft-tissue metastatic progression (under Response Evaluation Criteria in Solid Tumours (RECIST) v1.1 (Eisenhauer *et al*, 2009), or prostate-specific antigen (PSA) progression according to Prostate Cancer Clinical Trials working Group II criteria (PCWGII) (Scher *et al*, 2008).

Overall survival (OS) was calculated as the time from the date of study inclusion to death. Disease-free progression (DFP) was the time from the date of study inclusion to date of progression. Post-CT progression was defined either as an objective progression according to the RECIST or as a PSA progression. The PSA progression was defined as three consecutive increases in serum

PSA from the nadir value of either at least 25% for men without PSA response ($\geq 50\%$ confirmed PSA decline from baseline) or at least a 50% increase from nadir for all others. The PSA response was defined as partial if $\geq 30\%$ reduction. Time from progression to death (TPD) was defined as the time from progression after first-line therapy to death.

Patients who received hormonal treatment after first-line progression were included in a sub-analysis to measure their PSA response to SHT and post-progression survival.

Statistical analysis. Survival times (OS, DFS, and TPD) were analysed using a Kaplan–Meier model. For a statistical purpose, patients were stratified into two groups according to their baseline TL. Those patients with baseline TL below median value were classified as 'Low TL' and as 'High TL' if baseline TL was above median TL value. Prostate-specific antigen was included in the model as a continuous variable as well as categorical (median value). Other factors analysed were anaemia (defined as Hb values < 12.0 g dl⁻¹), Gleason score (>7 vs ≤ 7), serum level of alkaline phosphatase (> 131 IU l⁻¹), LDH (high vs normal), age (≥ 65 vs < 65), the presence or absence of visceral metastases, hepatic metastases or dyslipidemia, and the use of statins.

Univariate and multivariate analyses were performed. Variables that achieved statistical significance in the univariate analysis were included in a stepwise COX regression model for multivariate analysis. All analyses were performed using SAS Version 9.3. (SAS Institute Inc., SAS Campus Drive, Cary, NC, USA)

The guidelines for the reporting of tumour marker studies (REMARK) were followed to analyse and present data on studied biomarkers (McShane *et al*, 2005).

RESULTS

Patient population. One hundred and one patients with histologically confirmed mCRPC who were treated with first-line CT, in any of the non-hormonal first-line CT phase II–III trials were included in the analysis. The great majority of patients received a docetaxel-based regimen ($n = 68$) as first-line CT. Table 1 summarises the trials where patients were included in a timely basis.

Median age of patients was 70.0 years (range: 41.0–89.0) and 19.8% ($n = 20$) patients had visceral metastases. The median PSA was 50.7 ng ml⁻¹ (range: 0.04–1284.0), the median haemoglobin was 13.1 g dl⁻¹ (range: 9.3–156.0), and the median alkaline phosphatase was 163 U l⁻¹ (range: 39.0–1159.0).

Before development of mCRPC, all subjects received at least two hormonal treatments. These included an LH-RH analogue either

Table 1. First-line clinical trials for metastatic castrate-resistant prostate cancer selected

Trial	Phase	Experimental arm	Control arm	Total (n, %)
20050103 ^a (NCT00321620)	3	Denosumab + Placebo \pm CT	Zoledronic + Placebo \pm CT	10 (9.9)
CA180-227 (NCT00744497)	3	Dasatinib + Docetaxel	Placebo + Docetaxel	10 (9.9)
CA184-095 (NCT01057810)	3	Ipilimumab	Placebo	2 (1.9)
CEPO906A2229 (NCT00411528)	2	Patupilone	Docetaxel 75	11 (10.9)
FIRSTANA (NCT01308567)	3	Cabazitaxel 25 or 20	Docetaxel 75	12 (11.8)
VENICE (NCT00519285)	3	Aflibercept	Placebo + Docetaxel	15 (14.9)
E7389-G000-204 (NCT00278993)	2	Eribulin	None	14 (13.9)
H8Z-MC-JACR (NCT00642018)	2	LY2181308 + Docetaxel 75	Docetaxel 75	10 (9.9)
SINERGY (NCT01188187)	3	OGX-011 + Docetaxel	Docetaxel	17 (16.8)

^aOnly patients treated with chemotherapy (CT) were included in the analysis. NCT: ClinicalTrials.gov Identifier.

alone or in combination with an antiandrogen. When an LH-RH was administered alone at first instance, then an antiandrogen was added at progression. If the combination was used as the first approach, then the second hormonal manoeuvre was the withdrawal of the antiandrogen. Three patients received surgical castration instead of an LH-RH analogue. Four patients (4.0%) received more than two hormonal manoeuvres before first-line CT was introduced. These treatments corresponded to ketoconazol in three cases and diethylstilbestrol in one patient. Of these four, only one received salvage hormonal treatment after CT failure.

The median TL was 11.5 ng dl^{-1} (range: from undetectable to 49.0), with 19% of the patients having an undetectable level and 85% of the patients having less than 20 ng dl^{-1} of testosterone in plasma. Figure 1 depicts the distribution of serum baseline TLs. Baseline TL was above the TL median value in 52 patients (High TL group) and under the TL median value in 49 patients (Low TL group). No significant differences were observed in baseline characteristics between groups (Table 2).

Median TL was 7.9 ng dl^{-1} in patients who were using statins at the time of inclusion ($n = 18$), while median TL was 11.5 ng dl^{-1} in those patients without statins ($n = 78$). No significant correlation ($P = 0.3418$) was noted between the use of statins in patients and baseline TLs value.

Efficacy and survival analyses. At the moment of analysis (June 2013), 90 out of 101 patients had failed to first-line CT and 57 out of 101 patients had died. Median follow-up of patients was 20.6 months (range: 8.3–29.8). Median OS was 24.5 months (CI95%: 21.8–31.7).

Kaplan–Meier analysis stratified by TLs showed a median DFS higher in those patients with High TL than with Low TL (5.7 vs 4.9 months, respectively; $P = 0.001$). Median OS was also longer in those patients with High TL compared with Low TL (32.7 vs 22.4 months, respectively, $P = 0.0162$) (Figures 2a and b). When stratified by haemoglobin levels, OS was 28.4 vs 20.6 months (No anaemia vs Yes, respectively; $P = 0.0025$, Figure 3a), and OS was 35.9 vs 22.8 months when age was analysed (<65 vs ≥ 65 years old; $P = 0.0259$; Figure 3b).

The univariate analysis of OS demonstrated TLs (High TL vs Low TL, hazard ratio (HR): 0.5; CI95%: 0.3–0.9; $P = 0.018$), the presence of anaemia (Yes vs No, HR: 2.4; CI95%: 1.3–4.4; $P = 0.0024$), baseline PSA before CT (<51 vs $\geq 51 \text{ ng ml}^{-1}$, HR: 0.5; CI95%: 0.3–0.8; $P = 0.0074$), and age (<65 vs ≥ 65 , HR: 0.5; CI95%: 0.3–0.9; $P = 0.0294$) to be statistically significant. Other potential prognostic factors for survival analysed did not

show statistically significant differences: Gleason (>7 vs ≤ 7 : median OS: 22.8 vs 30.3 months; HR: 1.2; CI95%: 0.7–2.2; $P = 0.4661$), the presence of visceral metastasis (Yes vs No: median OS: 16.5 vs 26.2 months; HR: 1.3; CI95%: 0.7–2.4; $P = 0.4634$), liver metastases (Yes vs No: median OS: 16.5 vs 26.2 months; HR: 2.0; CI95%: 0.8–4.7; $P = 0.1206$), LDH (high vs normal: median OS: 19.9 vs 26.8 months; HR 1.5; CI95%: 0.8–2.8; $P = 0.2387$), serum alkaline phosphatase levels (≥ 131 vs $<131 \text{ IU l}^{-1}$: median OS: 24.1 vs 26.8 months; HR: 1.3; CI95%: 0.7–2.2; $P = 0.4249$), dyslipidemia (Yes vs No: median OS: 22.4 vs 26.8 months; HR: 1.1; CI95%: 0.7–1.9; $P = 0.6564$), or the use of statins (Yes vs No: 22.4 vs 28.4 months; HR: 1.3; CI95%: 0.7–2.4; $P = 0.4975$).

The multivariate analysis of OS showed TLs (High vs Low testosterone) to be in the limit of significance (HR: 0.6; CI95%: 0.4–1.0; $P = 0.0689$) and anaemia (Yes vs No) to be a significant factor (HR: 1.9; CI95%: 1.0–3.5; $P = 0.046$). A significant interaction between both variables was demonstrated, showing that High TL was a protective factor when there was not anaemia (HR: 0.5; CI95%: 0.3–0.8). Age (<65 vs ≥ 65) was not a statistically significant factor in the multivariate analysis (HR: 0.6; CI95%: 0.3–1.1; $P = 0.1075$). Baseline PSA showed a strong correlation with anaemia ($P = 0.0046$) and was not included in the multivariate analysis.

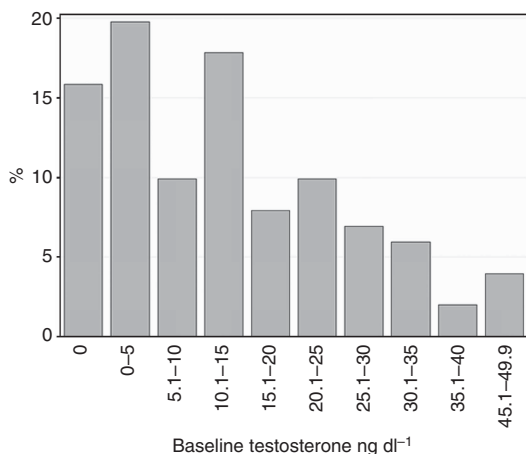
Since levels of haemoglobin and testosterone were significant or marginal factors for OS, we classified patients into three groups: (patients presenting two risk factors (anaemia and Low TL), one risk factor, or without risk factors), and a Kaplan–Meier model was used to analyse the OS. Patients presenting two factors (anaemia and Low TL) had a worse outcome compared to those with one or none of them (median OS: 17.9 vs 22.4 vs 38.1 months, respectively; $P = 0.0024$) (Figure 4).

Post-progression survival or TPD was 16.4 months (CI95%: 12.5–25.4) in the Low LT group of patients vs 23.7 months (CI95%: 16.5–35.8) in the High LT group ($P = 0.0456$) (Figure 5).

In 95 out of the 101 patients, PSA response was evaluated. The percentage of responders by PSA to first-line CT was similar in both groups (High LT 57.7% ($n = 30$) vs Low LT 61.2% ($n = 30$)). There was not a statistically significant association between PSA response and baseline TL ($P = 0.1381$). The application of a logistic model provided similar results (Wald Chi-square $P = 0.3468$). Also, PSA response rate was not associated with baseline TL in 68 of the 72 patients that received a docetaxel regimen as first-line CT (High TL 70.6% ($n = 24$) vs Low TL 67.7% ($n = 23$); $P = 0.5827$). The PSA response was not assessed in four patients receiving a docetaxel-based CT regimen. Thus, baseline TLs were not predictive of PSA response to first-line docetaxel.

Response to SHT and post-progression survival. After first-line CT failure, 41 out of 101 (40.6%) patients received salvage hormonal treatment. As described before, all of these patients had received at least two hormonal manoeuvres before first-line CT. Treatments received consisted of diethylstilbestrol ($n = 12$, 29%), ketoconazol ($n = 11$, 27%), abiraterone ($n = 9$, 22%), bicalutamide or high-dose bicalutamide ($n = 7$, 17%), cyproterone acetate ($n = 1$, 2%), and enzalutamide ($n = 1$, 2%).

The PSA response to SHT was observed in 36.6% ($n = 15$) of the patients, while 56.1% ($n = 23$) of the patients were non-responders (SD and PD). Response data were not available in three patients. Response was observed in 21.7% ($n = 5$) of the Low TL patients vs 55.6% ($n = 10$) in the High TL group. A majority (73.9%; $n = 17$) of the Low TL patients were non-responders, compared with 33.3% ($n = 6$) in the High TL patients ($P = 0.0196$).



Patients with TL values under the assay sensitivity were assigned a 0 TL value.

Figure 1. Distribution of serum androgen levels at baseline.

DISCUSSION

In spite of castrate levels of testosterone, all patients with metastatic prostate cancer receiving treatment with either medical

Table 2. Baseline characteristics by testosterone level

	Low TL	High TL	Total	P-value
No. of patients	49	52	101	
Age (years)				
Median (IQR)	71.0 (64.0, 75.0)	69.0 (64.0, 75.0)	70.0 (64.0, 75.0)	0.5862
Min, Max	52.0, 85.0	41.0, 89.0	41.0, 89.0	
Visceral metastases, n (%)				
Yes	11 (22.5)	13 (25.0)	24 (23.8)	0.7634
No	38 (77.6)	39 (75.0)	79 (78.2)	
Missing data	0 (0.0)	0 (0.0)	0 (0.0)	
Hepatic metastases, n (%)				
Yes	6 (12.2)	6 (11.5)	12 (11.9)	0.9127
No	43 (87.8)	46 (88.5)	89 (88.1)	
Missing data	0 (0.0)	0 (0.0)	0 (0.0)	
Gleason score				
≤7	18 (36.7)	21 (40.4)	39 (38.6)	1.0000
>7	25 (51.0)	28 (53.9)	53 (52.5)	
Missing data	6 (12.2)	3 (5.8)	9 (8.9)	
Haemoglobin value (g l⁻¹)				
Median (IQR)	132.0 (120.0, 138.0)	130.5 (123.0, 138.0)	131.0 (122.0, 138.0)	0.5397
Min, Max	98.0, 156.0	93.0, 153.0	93.0, 156.0	
Alkaline phosphatase (IU l⁻¹)				
Median (IQR)	179.0 (120.0, 291.0)	129.0 (77.0, 245.5)	163.0 (87.0, 260.0)	0.0531
Min, Max	58.0, 1159.0	39.0, 790.0	39.0, 1159.0	
PSA (ng ml⁻¹)				
Median (IQR)	59.5 (19.5, 202.0)	50.2 (17.6, 124.5)	50.7 (18.9, 138.0)	0.3138
Min, Max	2.4, 1284.0	0.04, 514.0	0.04, 1284.0	
LDH				
Normal	27 (55.1)	34 (65.4)	61 (60.4)	0.6254
High	12 (24.5)	11 (21.2)	23 (22.8)	
Missing data	10 (20.4)	7 (13.5)	17 (16.8)	

Abbreviations: IQR = interquartile range; LDH = lactate dehydrogenase; PSA, prostate-specific antigen, TL = testosterone level. Data are number of patients (%) or median (IQR).

or surgical castration will finally progress, entering the so-called castrate-resistant state. Although it was thought that these patients were truly progressing independent of the activity of the androgen receptor (AR), today it is well known that the AR is still activated in most patients. In fact, the activity of docetaxel, the present standard of care in mCRPC, can partly be explained through its activity over the AR, blocking the process of internalisation (Darshan *et al*, 2011). The knowledge that the activation of the AR permits prostate cancer to escape from the castrate levels of testosterone has conducted to the development of new therapies centred in reducing plasma and intratumoral TLs (Attard *et al*, 2008). Though adrenal and intratumoral *de novo* androgen synthesis contributes to disease progression (Locke *et al*, 2008; Montgomery *et al*, 2008), the relationship between serum androgens and intratumoral androgens remains poorly understood. In addition, an escape of testosterone from testis may occur in some patients (Morote *et al*, 2007), with prognostic implications (Perachino *et al*, 2010). A potential role of residual plasma androgens has been studied. Peripheral baseline androstenedione was predictive of response to ketoconazole in patients with mCRPC (Small *et al*, 2004). Abiraterone acetate, an inhibitor of CYP17–20 hydroxylase, provides a

further reduction in the level of plasma testosterone that correlates with PSA response in patients progressing after ketoconazole-based therapy. The final proof of concept for abiraterone came through data from a positive phase III trial in mCRPC patients progressing after docetaxel-based CT (de Bono *et al*, 2011), and from a small translational study where abiraterone was more effective for tumours with a tumour nuclear AR expression, coupled with cytoplasmic CYP17 expression (Efstathiou *et al*, 2012). Ryan *et al* (2013b) found that baseline serum androgen (testosterone, androstenedione, and dehydroepiandrosterone sulfate (DHEAS) levels were a validated biomarker that was prognostic for survival in the patients treated with abiraterone after docetaxel failure in the phase III trial. The relationship of TL with PSA response by first or salvage therapies was not analysed in their study.

Our hypothesis states that plasma TL might reflect the activity of the AR. Against the use of TLs, is the fact that they may be affected by diet and circadian conditions, not well accounted for in our study; and that there are other androgens in plasma, not only testosterone. Although, to date, no models exist that account for total androgen load, as opposed to the measurement of the level of an individual hormone (e.g., testosterone), this could be an

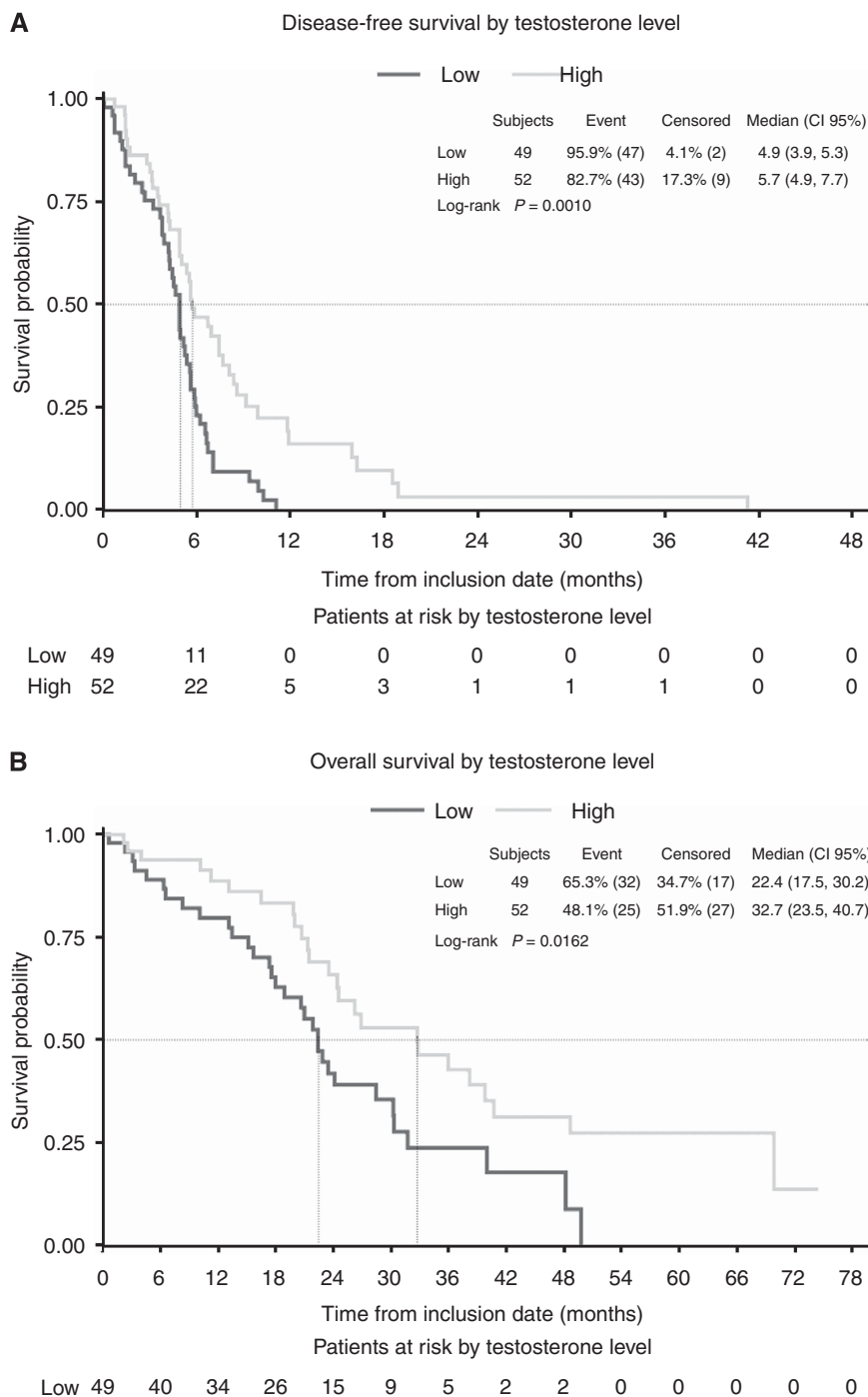


Figure 2. Disease-free survival (A) and overall survival (B) according to testosterone baseline levels.

interesting point of further investigation, and maybe, a more accurate tool than a single hormone level.

In our study, we demonstrated that testosterone baseline levels under castration were a prognostic factor for survival before first-line CT. Several caveats should be considered when interpreting these data, including the fact that these analyses were exploratory, with no attempt to correct for multiplicity. Testosterone was measured using commercial assays, thus, a definitive cutoff point could not be established. Novel and more precise ultrasensitive techniques are nowadays available, although not implemented on the daily practice. Since androgen synthesis depends on cholesterol, TL may be reduced by the use of statins. Although in our analysis the difference observed was not

statistically significant, the figures are not comparable due to the small proportion of patients that were using statins compared with those who were not. Interestingly, patients using statins had a worse OS (22.4 vs 28.4 months), although this result was not statistically significant ($P = 0.4964$) and again, the interpretation is limited by the small size of the population that used these drugs. Although we could hypothesise that reducing androgen levels with statins may drive to a lower baseline testosterone plasma levels and this could impact on patients outcome, this seems very unlikely, and patients using statins could have a worse OS due to other reasons such as cardiovascular associated comorbidities, although these was not analysed. Finally, low TL might be a manifestation of a patient

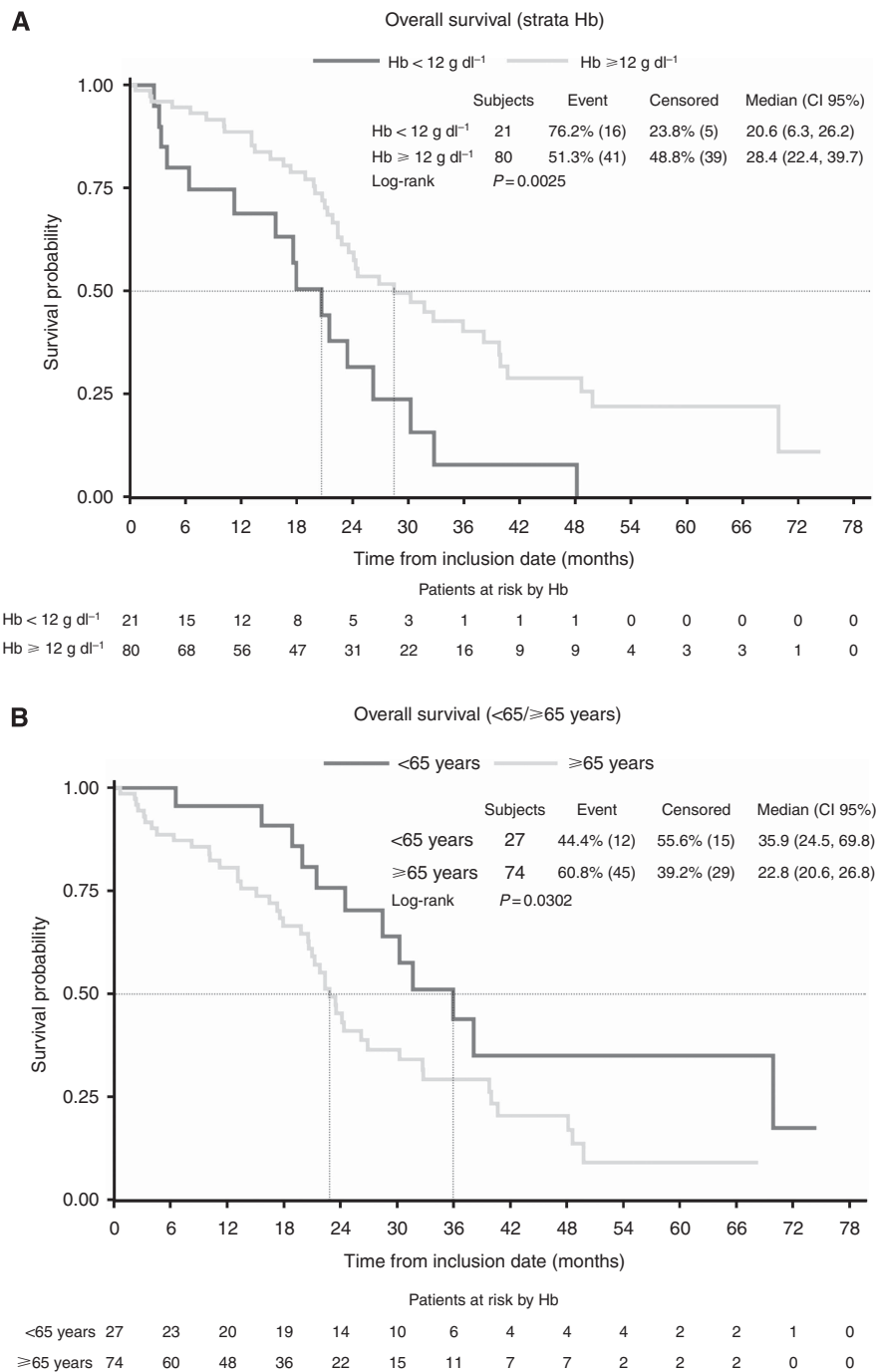


Figure 3. Overall survival according to the presence of anaemia (A) or age (B) at baseline.

who is in poor general health. We plan to validate our results using an external data set.

It is noteworthy, in the multivariate analysis, that the presence of anaemia was a significant prognostic factor for OS. This finding correlates with Armstrong nomograms (Armstrong *et al*, 2007). To be aged 65 years or more was a prognostic factor in the univariate analysis, but loses statistical significance when considered in the multivariate analysis. Prostate-specific antigen was also a significant factor for survival but could not be included in the multivariate analysis since it showed a strong correlation with anaemia in the Wilcoxon test.

Although the Gleason score (>7 vs ≤7) and the presence of hepatic metastases (Yes vs No.) showed a notable difference in survival times in our series, this difference was not statistically

significant, so we can only conclude that there was a trend towards better prognosis for survival with a lower Gleason score and an absence of hepatic metastasis. Gleason score obtained by biopsy was allowed in our series, and this may reflect an under staging in some patients. High LDH, visceral metastases, and hepatic metastases were present in a small number of patients (n=3), therefore no conclusion can be drawn up to now.

In conclusion, high baseline TLs seem to be a prognostic factor before first-line CT, and a predictive factor of improved OS among patients receiving hormonal manoeuvres after docetaxel. Moreover, AR activity can be analysed through biopsies of the tumour, and easier ways to estimate the activity of the AR are presently lacking. The analysis of plasma TLs could, if validated in a confirmatory study, be useful for decision of therapy.

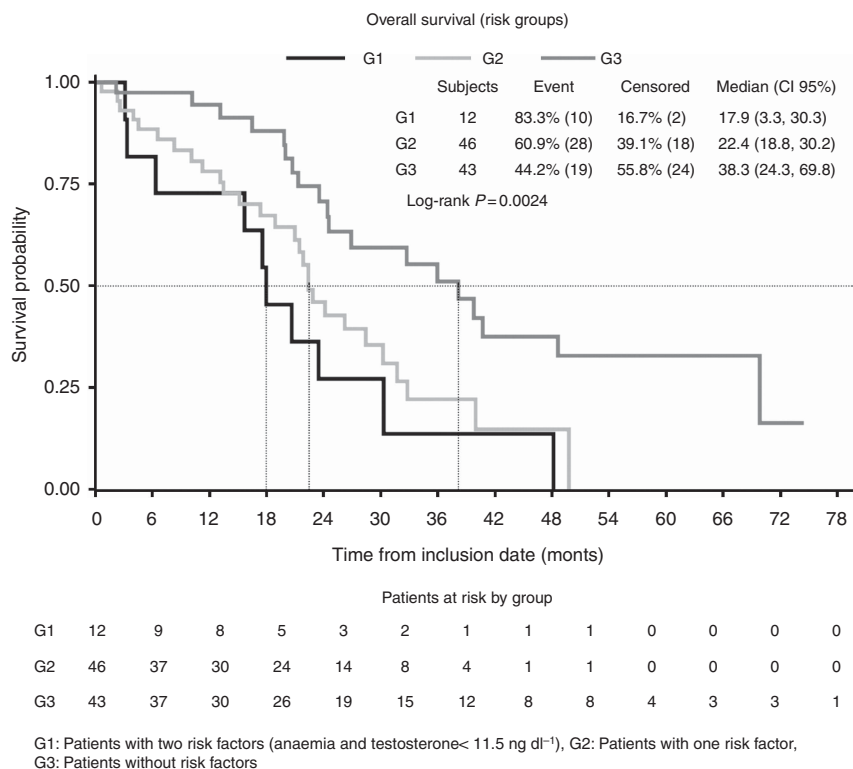


Figure 4. Overall survival according to prognostic groups.

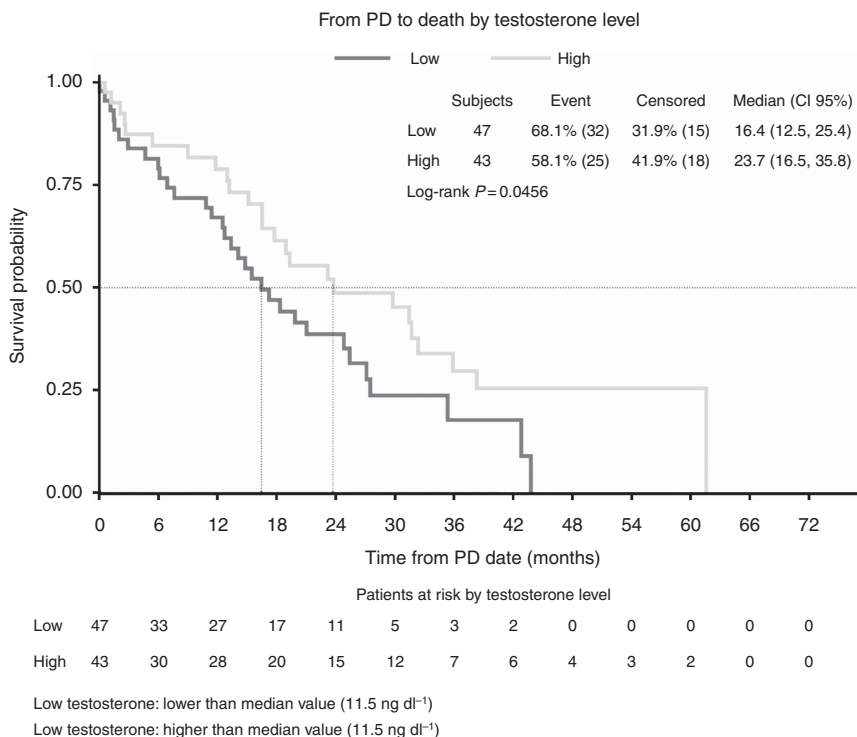


Figure 5. Time from progression to first-line therapy to death.

ACKNOWLEDGEMENTS

ClinicalTrials.gov identifiers: NCT00321620; NCT00744497; NCT01057810; NCT00411528; NCT00278993; NCT01308567; NCT00642018; NCT01188187; NCT00519285. This study was performed within the Medical PhD framework of A Gómez de Liaño at the Universitat Autònoma de Barcelona.

REFERENCES

Armstrong AJ, Garrett-Mayer ES, Yang YO, de Witt R, Tannock IF, Eisenberger M (2007) A contemporary prognostic nomogram for men with hormone-refractory metastatic prostate cancer: a TAX327 study analysis. *Clin Cancer Res* **13**: 6396–6403.
 Attard G, Reid AH, Yap TA, Raynaud F, Dowsett M, Setttee S, Barrett M, Parker C, Martins V, Folkler E, Clark J, Cooper CS,

- Kaye SB, Dearnaley D, Lee G, de Bono JS (2008) Phase I clinical trial of a selective inhibitor of CYP17, abiraterone acetate, confirms that castration-resistant prostate cancer commonly remains hormone driven. *J Clin Oncol* **26**: 4563–4571.
- Darshan MS, Loftus MS, Thadani-Mulero M, Levy BP, Escuin D, Zhou XK, Gjyzezi A, Chanel-Vos C, Shen R, Tagawa ST, Bander NH, Nanus DM, Giannakakou P (2011) Taxane-induced blockade to nuclear accumulation of the androgen receptor predicts clinical responses in metastatic prostate cancer. *Cancer Res* **71**(18): 6019–6029.
- de Bono JS, Logothetis CJ, Molina A, Fizazi K, North S, Chu L, Chi KN, Jones RJ, Goodman Jr OB, Saad F, Staffurth JN, Mainwaring P, Harland S, Flaig TW, Hutson TE, Cheng T, Patterson H, Hainsworth JD, Ryan CJ, Sternberg CN, Ellard SL, Flechon A, Saleh M, Scholz M, Efstathiou E, Zivi A, Bianchini D, Loriot Y, Chieffo N, Kheoh T, Haqq CM, Scher HI (2011) Abiraterone and increased survival in metastatic prostate cancer. *N Engl J Med* **364**: 1995–2005.
- de Bono JS, Oudard S, Ozguroglu M, Hansen S, Machiels JP, Kocak I, Gravis G, Bodrogi I, Mackenzie MJ, Shen L, Roessner M, Gupta S, Sartor AO (2010) Prednisone plus cabazitaxel or mitoxantrone for metastatic castration-resistant prostate cancer progressing after docetaxel treatment: a randomised open-label trial. *Lancet* **376**: 1147–1154.
- Efstathiou E, Titus M, Tsavachidou D, Tzelepi V, Wen S, Hoang A, Molina A, Chieffo N, Smith LA, Karlou M, Troncoso P, Logothetis CJ (2012) Effects of abiraterone acetate on androgen signaling in castrate-resistant prostate cancer in bone. *J Clin Oncol* **30**: 637–643.
- Eisenhauer EA, Therasse P, Bogaerts J, Schwartz LH, Sargent D, Ford R, Dancey J, Arbuck S, Gwyther S, Mooney M, Rubinstein L, Shankar L, Dodd L, Kaplan R, Lacombe D, Verweij J (2009) New response evaluation criteria in solid tumours: revised RECIST guideline (version 1.1). *Eur J Cancer* **45**: 228–247.
- Hashimoto K, Masumori N, Hashimoto J, Takayanagi A, Fukuta F, Tsukamoto T (2011) Serum testosterone level to predict the efficacy of sequential use of antiandrogens as second-line treatment following androgen deprivation monotherapy in patients with castration-resistant prostate cancer. *Jpn J Clin Oncol* **41**: 405–410.
- Locke JA, Guns ES, Lubik AA, Adomat HH, Hendy SC, Wood CA, Ettinger SL, Gleave ME, Nelson CC (2008) Androgen levels increase by intratumoral de novo steroidogenesis during progression of castration-resistant prostate cancer. *Cancer Res* **68**: 6407–6415.
- Loriot Y, Bianchini D, Ileana E, Sandhu S, Patrikidou A, Pezaro C, Albiges L, Attard G, Fizazi K, De Bono JS, Massard C (2013) Antitumour activity of abiraterone acetate against metastatic castration-resistant prostate cancer progressing after docetaxel and enzalutamide (MDV3100). *Ann Oncol* **24**(7): 1807–1812.
- McShane LM, Altman DG, Sauerbrei W, Taube SE, Gion M, Clark GM (2005) Reporting recommendations for tumor marker prognostic studies (REMARK). *J Natl Cancer Inst* **97**(16): 1180–1184.
- Mezynski J, Pezaro C, Bianchini D, Zivi A, Sandhu S, Thompson E, Hunt J, Sheridan E, Baikady B, Sarvadikar A, Maier G, Reid AH, Mulick CA, Olmos D, Attard G, de BJ (2012) Antitumour activity of docetaxel following treatment with the CYP17A1 inhibitor abiraterone: clinical evidence for cross-resistance? *Ann Oncol* **23**: 2943–2947.
- Montgomery RB, Mostaghel EA, Vessella R, Hess DL, Kalthorn TF, Higano CS, True LD, Nelson PS (2008) Maintenance of intratumoral androgens in metastatic prostate cancer: a mechanism for castration-resistant tumor growth. *Cancer Res* **68**: 4447–4454.
- Morote J, Orsola A, Planas J, Trilla E, Raventos CX, Cecchini L, Catalan R (2007) Redefining clinically significant castration levels in patients with prostate cancer receiving continuous androgen deprivation therapy. *J Urol* **178**: 1290–1295.
- Noonan KL, North S, Bitting RL, Armstrong AJ, Ellard SL, Chi KN (2013) Clinical activity of abiraterone acetate in patients with metastatic castration-resistant prostate cancer progressing after enzalutamide. *Ann Oncol* **24**: 1802–1807.
- Perachino M, Cavalli V, Bravi F (2010) Testosterone levels in patients with metastatic prostate cancer treated with luteinizing hormone-releasing hormone therapy: prognostic significance? *BJU Int* **105**: 648–651.
- Prevail Trial (2013) Medivation Press Release <http://investors.medivation.com/releasedetail.cfm?ReleaseID=798880> (Last accessed on 13 December 2013).
- Ryan CJ, Smith MR, de Bono JS, Molina A, Logothetis CJ, de SP, Fizazi K, Mainwaring P, Piulats JM, Ng S, Carles J, Mulders PF, Basch E, Small EJ, Saad F, Schrijvers D, Van PH, Mukherjee SD, Suttman H, Gerritsen WR, Flaig TW, George DJ, Yu EY, Efstathiou E, Pantuck A, Winquist E, Higano CS, Taplin ME, Park Y, Kheoh T, Griffin T, Scher HI, Rathkopf DE (2013a) Abiraterone in metastatic prostate cancer without previous chemotherapy. *N Engl J Med* **368**: 138–148.
- Ryan CJ, Molina A, Li J, Kheoh T, Small EJ, Haqq CM, Grant RP, de Bono JS, Scher HI (2013b) Serum androgens as prognostic biomarkers in castration-resistant prostate cancer: results from an analysis of a randomized phase III trial. *J Clin Oncol* **31**: 2791–2798.
- Scher HI, Halabi S, Tannock I, Morris M, Sternberg CN, Carducci MA, Eisenberger MA, Higano C, Bubley GJ, Dreicer R, Petrylak D, Kantoff P, Basch E, Kelly WK, Figg WD, Small EJ, Beer TM, Wilding G, Martin A, Hussain M (2008) Design and end points of clinical trials for patients with progressive prostate cancer and castrate levels of testosterone: recommendations of the Prostate Cancer Clinical Trials Working Group. *J Clin Oncol* **26**: 1148–1159.
- Scher HI, Fizazi K, Saad F, Taplin ME, Sternberg CN, Miller K, de WR, Mulders P, Chi KN, Shore ND, Armstrong AJ, Flaig TW, Flechon A, Mainwaring P, Fleming M, Hainsworth JD, Hirmand M, Selby B, Seely L, de Bono JS (2012) Increased survival with enzalutamide in prostate cancer after chemotherapy. *N Engl J Med* **367**: 1187–1197.
- Small EJ, Halabi S, Dawson NA, Stadler WM, Rini BI, Picus J, Gable P, Torti FM, Kaplan E, Vogelzang NJ (2004) Antiandrogen withdrawal alone or in combination with ketoconazole in androgen-independent prostate cancer patients: a phase III trial (CALGB 9583). *J Clin Oncol* **22**: 1025–1033.

This work is published under the standard license to publish agreement. After 12 months the work will become freely available and the license terms will switch to a Creative Commons Attribution-NonCommercial-Share Alike 3.0 Unported License.