



Toll-Like Receptor (TLR)-1/2 Triggering of Multiple Myeloma Cells Modulates Their Adhesion to Bone Marrow Stromal Cells and Enhances Bortezomib-Induced Apoptosis

Jahangir Abdi¹, Tuna Mutis², Johan Garssen¹, Frank A. Redegeld^{1*}

1 Division of Pharmacology, Utrecht Institute for Pharmaceutical Sciences, Faculty of Science, Utrecht University, Utrecht, the Netherlands, **2** Department of Clinical Chemistry & Hematology, University Medical Center Utrecht, Utrecht, the Netherlands

Abstract

In multiple myeloma (MM), the malignant plasma cells usually localize to the bone marrow where they develop drug resistance due to adhesion to stromal cells and various environmental signals. Hence, modulation of this interaction is expected to influence drug sensitivity of MM cells. Toll-like receptor (TLR) ligands have displayed heterogeneous effects on B-cell malignancies and also on MM cells in a few recent studies, but effects on adhesion and drug sensitivity of myeloma cells in the context of bone marrow stromal cells (BMSCs) have never been investigated. In the present study, we explored the modulatory effects of TLR1/2 ligand (Pam3CSK4) on adhesion of human myeloma cells to BMSCs. It is shown that TLR1/2 triggering has opposite effects in different HMCLs on their adhesion to BMSCs. Fravel, L363, UM-6, UM-9 and U266 showed increased adhesion to BMSC in parallel with an increased surface expression of integrin molecules $\alpha 4$ and $\alpha V\beta 3$. OPM-1, OPM-2 and NCI-H929 showed a dose-dependent decrease in adhesion upon TLR activation following a downregulation of $\beta 7$ integrin expression. Importantly, TLR1/2 triggering increased cytotoxic and apoptotic effects of bortezomib in myeloma cells independent of the effect on stromal cell adhesion. Moreover, the apoptosis-enhancing effect of Pam3CSK4 paralleled induction of cleaved caspase-3 protein in FACS analysis suggesting a caspase-dependent mechanism. Our findings uncover a novel role of TLR activation in MM cells in the context of bone marrow microenvironment. Stimulation of TLR1/2 bypasses the protective shield of BMSCs and may be an interesting strategy to enhance drug sensitivity of multiple myeloma cells.

Citation: Abdi J, Mutis T, Garssen J, Redegeld FA (2014) Toll-Like Receptor (TLR)-1/2 Triggering of Multiple Myeloma Cells Modulates Their Adhesion to Bone Marrow Stromal Cells and Enhances Bortezomib-Induced Apoptosis. *PLoS ONE* 9(5): e96608. doi:10.1371/journal.pone.0096608

Editor: Andrei L. Gartel, University of Illinois at Chicago, United States of America

Received: November 19, 2013; **Accepted:** April 9, 2014; **Published:** May 2, 2014

Copyright: © 2014 Abdi et al. This is an open-access article distributed under the terms of the Creative Commons Attribution License, which permits unrestricted use, distribution, and reproduction in any medium, provided the original author and source are credited.

Funding: This research has been funded by the Utrecht University. The funders had no role in study design, data collection and analysis, decision to publish, or preparation of the manuscript.

Competing Interests: The authors have declared that no competing interests exist.

* E-mail: f.a.m.redegeld@uu.nl

Introduction

Adhesion of multiple myeloma (MM) cells to bone marrow stromal cells (BMSCs), mediated mostly by the integrin family of adhesion molecules, renders the tumor cells resistant against drugs and apoptotic stimuli, and contributes to other complications of the disease including osteolytic lesions and angiogenesis [1,2,3]. Several cytokines derived from both bone marrow stromal cells and MM cells have been indicated to maintain this interaction [4,5,6]. Toll-like receptors (TLRs) are a family of pathogen recognition receptors expressed mainly by the innate immune cells, but also by a variety of human cancer cells including those of B cell malignancies especially MM [7,8,9,10,11,12]. TLR activation by microbial or endogenous ligands has been implicated in linking inflammation to cancer, with the transcription factor NF κ B activation as the main establishing event [13,14,15,16,17,18]. However, activation of NF κ B in human myeloma cell lines (HMCLs) and primary MM cells has been explained partly by detection of some mutations in NF κ B-controlled/related genes (mostly in alternative pathway) [19,20], and are probably independent of TLR signaling which is normally through the canonical pathway [21,22].

Possible contribution of TLRs to inflammation-related malignancy is indicated mostly by induction of pro-inflammatory cytokines in tumor environment [23], upregulation of cell adhesion molecules on cancer cells and their adhesion or migration following TLR triggering [12,24,25,26]. Recent studies in cells of B lymphoid malignancies including MM also demonstrated that TLR triggering would result in both positive and negative outcomes, including induction of growth and proliferation, drug resistance, immune evasion and cell death. Nonetheless, the modulatory effect of TLR activation in MM cells on their adhesion to bone marrow microenvironment components including BMSCs has not been explored to date. Hence, regarding the fact that TLRs of MM cells may be activated in the inflammatory environment of bone marrow, possibly by microbial/endogenous ligands, we hypothesized that TLR triggering on MM cells might modulate their adhesion to BMSCs and subsequently modulate MM cells survival and drug resistance. In a recent study, we demonstrated that TLR1/2 activation either increased or decreased adhesion of human myeloma cells to fibronectin and modulated cytotoxicity of bortezomib in HMCLs [27]. In this study, we extend these previous observations and

show using an *in vitro* adhesion system that TLR-1/2 triggering on MM cells by Pam3CSK4 modulated their interaction with BMSCs involving adhesion molecules of $\beta 1$ integrin family. Furthermore, Pam3CSK4 treatment of HMCLs increased their apoptotic response to bortezomib in the context of BMSCs, which suggests that TLR1/2 triggering may be of therapeutic use to decrease cellular resistance to the cytotoxic action of chemotherapeutic agents.

Materials and Methods

Reagents and Antibodies

TLR-1/2 specific ligand, Pam3CSK4, was obtained from Invivogen (San Diego, CA, USA). Rat anti-human beta 7 integrin (clone FIB504, for both FACS and blocking), mouse anti-human $\alpha V\beta 3$ integrin (CD51/CD61, clone 23C6, for both FACS and blocking), mouse anti-human VCAM-1 (CD106)-PE (clone STA), mouse anti-human CD49e ($\alpha 5$ integrin, clone PID6)-PE, mouse anti-human CD49d ($\alpha 4$ integrin, clone 9F10)-PE, anti-mouse IgG-FITC, and mouse IgG2b, κ isotype control were all from eBioscience. Monoclonal rabbit anti-human MyD88 (clone D80F5) and anti-human cleaved caspase-3 (clone D3E9) were obtained from Cell Signaling Technology (Danvers, MA, USA). Mouse anti-human CD49d (clone HP2/1, for blocking) was from ABD Serotec (MorphoSys, Oxford, U.K). Alexa Fluor 488 rabbit anti-rat IgG (H+L) was purchased from Invitrogen. Anti-beta actin and horseradish peroxidase-conjugated goat anti-rabbit IgG were also from Santa Cruz Biotechnology, CA, USA. Bortezomib was obtained from LC Laboratories (Woburn, MA, USA) and dissolved in DMSO to make 100 mM stock. DMSO concentrations in all drug exposure tests never exceeded 0.05%. PMS (Phenazine methosulfate) and XTT were also supplied by Sigma-Aldrich.

Cell Lines and Cell Culture

The HMCLs, Fravel, L363, OPM1, OPM2, U266, and NCI-H929, were obtained from American Type Culture Collection (Manassas, VA, USA). UM-6 and UM-9 had been established by the Department of Clinical Chemistry & Hematology, University Medical Center Utrecht, Utrecht, the Netherlands [28,29]. UM6 is IL-6 dependent and others are IL-6 independent. All the cell lines were maintained in RPMI-1640 culture medium containing 2-mM L-glutamine supplemented with 5 or 10% fetal bovine serum and intermittently with antibiotics, in a 37°C incubator with 5% CO₂. To UM6 cell line was added 5 ng/mL of recombinant human IL-6 (from eBioscience, San Diego, CA, USA). To NCI-H929 cell line medium were also added 1 mM sodium pyruvate and 50 μ M 2-mercaptoethanol. Normal human bone marrow stromal cell line, HS-5, was obtained from American Type Culture Collection. This cell line was maintained in DMEM medium supplemented with 10% FBS and intermittently with antibiotics.

For isolating primary stromal cells, frozen vials of patient bone marrow samples were thawed, suspended in fresh warm DMEM medium and applied to Ficoll Hypaque density gradient centrifugation to possibly remove cellular debris and dead cells. The remaining fractions were suspended in DMEM medium and kept in a T-75 culture flask for a few hours in a 37°C incubator. Then the floating cells were gently aspirated and the adhered fraction was maintained in DMEM supplemented with 10% FBS, 100 IU/ml penicillin and 100 μ g/ml streptomycin. The medium was refreshed twice per week to yield a confluent layer in 3–4 weeks. Confluent wells were passaged after detachment with trypsin-EDTA. The stromal cells at passage 1–3 were seeded in 12-well plates for survival experiments. Bone marrow samples were surplus

material from bone marrow isolated for diagnostic procedures. All patients approved use of surplus material for scientific purposes by written informed consent. Use of surplus material has been discussed with and approved by the review board of the University Medical Center Utrecht. Due to the nature of the samples i.e. surplus sample remaining after diagnostic procedures, no formal approval number was needed and provided by the Ethics Committee.

Cell Stimulation

To stimulate HMCLs, Pam3CSK4 was used in 1.0, 2.0 and 5.0 μ g/ml concentrations. Before any treatment, cells were washed once with PBS, suspended in warm RPMI medium supplemented with 5% FBS. Incubation time in a 37°C incubator with 5% CO₂ was 24 hours.

Flow Cytometry

In FACS experiments, indirect or indirect staining was performed. Briefly, 10⁵ cells from indicated conditions were washed and suspended in FACS staining buffer (PBS+0.5% BSA+0.01% sodium azide). Cells were incubated with primary antibodies ($\beta 7$ and $\alpha V\beta 3$) followed by relevant fluorescent conjugated secondary antibodies. Direct staining method was also used for anti-VCAM-1 (CD106), anti-CD49d ($\alpha 4$) and anti-CD49e ($\alpha 5$) with fluorochrome-conjugated antibodies. Finally, the samples were washed, suspended in FACS buffer and analyzed with a FACSCantoII flow cytometer (BD Biosciences). Gated live cell populations were analyzed using Cell Quest or FACS Diva software.

Fluorometric Adhesion Assay

Two to three days before adhesion experiments, 3 \times 10⁴ cells of the bone marrow stromal cell line, HS-5, or MM primary BMSC were seeded on 96-well plates. Immediately before adhesion, the plates were washed twice with warm PBS. For adhesion analysis, 10⁶ HMCLs (treated or untreated) were harvested, washed twice in PBS buffer and suspended in 1 ml of room temperature RPMI medium without any additive. Cell suspensions were labeled with Calcein-AM (1 μ M) for 30 minutes at room temperature with gentle mixing after 15 min. To stop labeling, samples were treated with ice cold RPMI and spun twice at 4°C. One milliliter of RPMI plus 2% FBS at room temperature was added to all samples and 10⁵ cells were seeded on stromal cell coated 96-well plates and incubated at 37°C for 2 hours. At the end of incubation time, total and background fluorescence were measured with a plate reader (Mithras LB 940, Berthold Technologies, Germany). For measuring fluorescence of adhered cells, non-adhered cells were removed with three gentle washes with warm RPMI, 100 μ L RPMI was added to each well and the fluorescence was measured. In some experiments to determine the adhesion molecules involved, anti- $\beta 7$ (5 μ g/ml), anti- $\alpha V\beta 3$ and anti- $\alpha 4$ (10 μ g/ml) antibodies were added to appropriate number of cells for 15 min at 4°C, the cells were then washed once with cold RPMI to remove free antibody molecules and then added to coated plates. For background readings, fluorescence of the wells containing cells adhered only to BSA was considered. The following formula was used to calculate percentage of adhesion: (Fluorescence reading of adhered cells-background reading) \times 100 / (Total fluorescence reading-spontaneous reading).

Cell Survival: Drug Cytotoxicity Assay

Drug sensitivity measurements were performed using modification of an *acute exposure* approach as described previously [30].

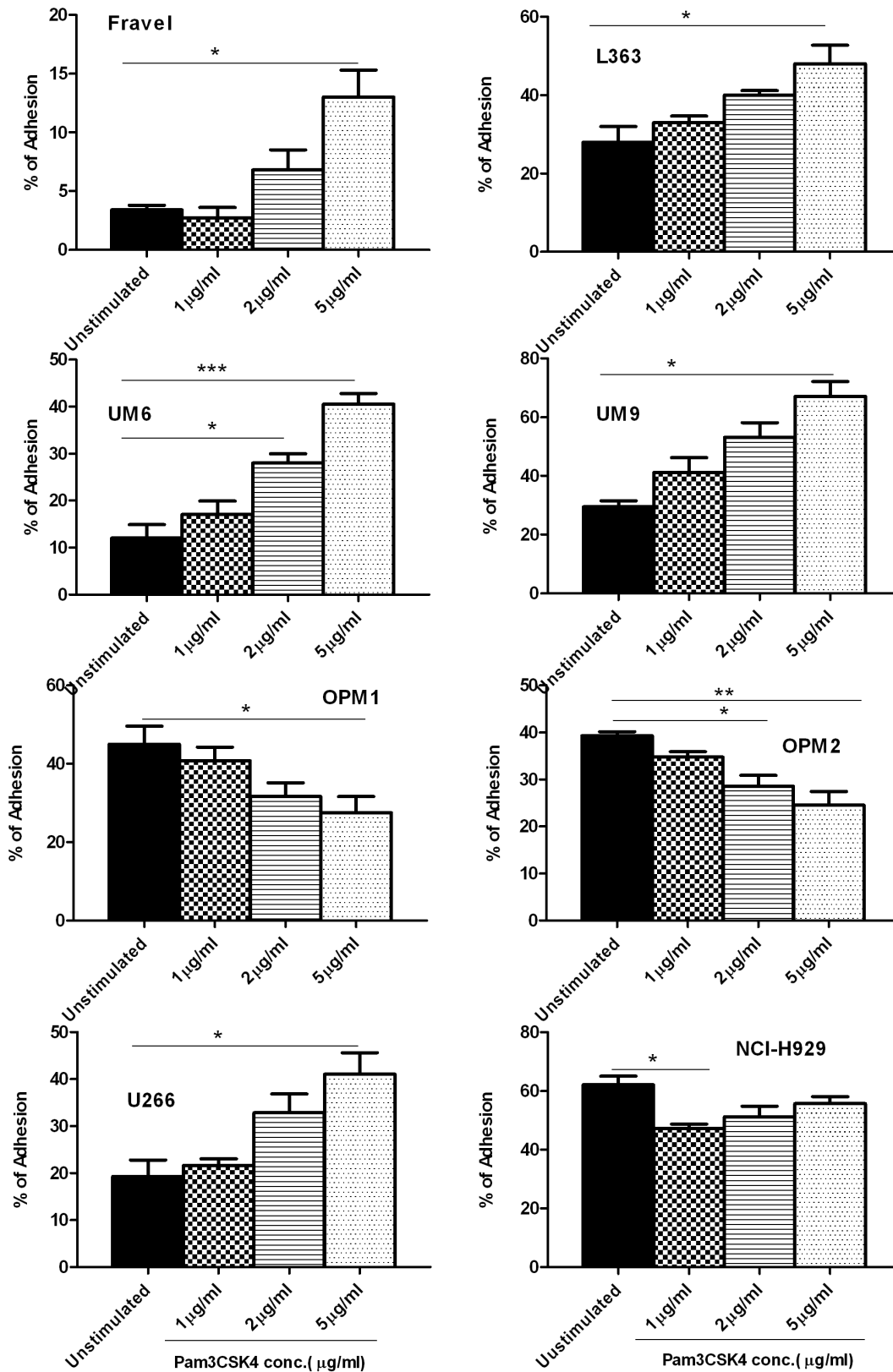
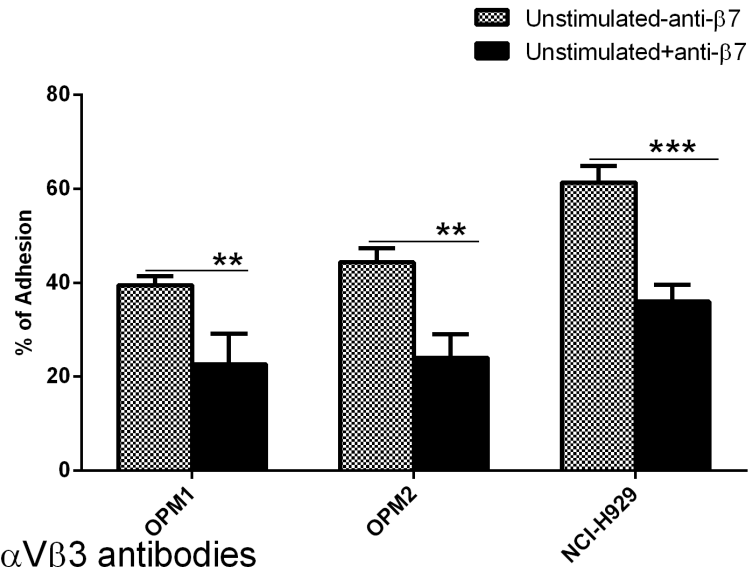


Figure 2. The effect of Pam3CSK4 on adhesion of HMCLs to BMSCs. HMCLs were stimulated with Pam3CSK4 for 24 hours and then exposed to HS5-coated wells for adhesion assay as explained in materials and methods. Pam3CSK4 decreased adhesion of OPM-1, OPM-2, and NCI-H929 cell lines to HS-5 in a dose-dependent manner. On the contrary, adhesion of L363, UM-6, UM-9 and U266 cell lines increased dose-dependently. The results are the statistical analyses of data in at least 3 separate experiments expressed as mean \pm standard error of mean, * $P < 0.05$, ** $P < 0.01$, *** $P < 0.001$.

doi:10.1371/journal.pone.0096608.g002

A)-Blocking the induced adhesion using anti-β7 antibody



B)-Blocking the induced adhesion using anti-α4 and anti-αVβ3 antibodies

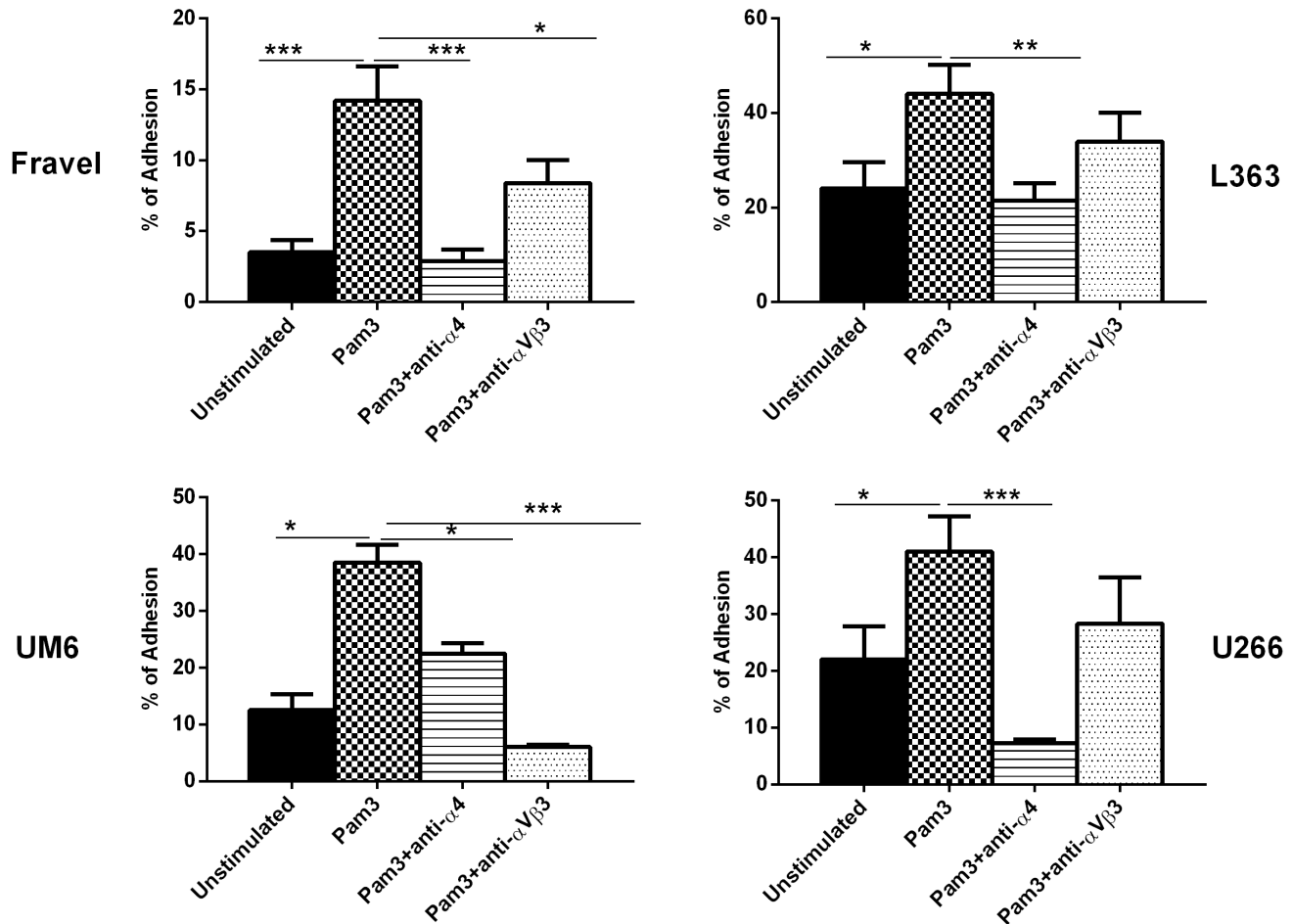


Figure 3. Blocking experiments with anti-β7, anti-α4 and anti-αVβ3 antibodies for adhesion to HS-5 stromal cells. Panel A, Blocking with anti-β7. HMCLs were stimulated with Pam3CSK4 for 24 hours and then treated with anti-β7 antibody before adhesion to HS5-coated wells. Panel B, Blocking experiments with anti-α4 and anti-αVβ3 antibodies for adhesion to HS-5. HMCLs were stimulated with Pam3CSK4 for 24 hours and then treated with anti-α4 and anti-αVβ3 antibodies before adhesion to HS5-coated wells. The results are the statistical analyses of data in 3 separate experiments expressed as mean ± SEM, **P*<0.05, ***P*<0.01, ****P*<0.001. doi:10.1371/journal.pone.0096608.g003

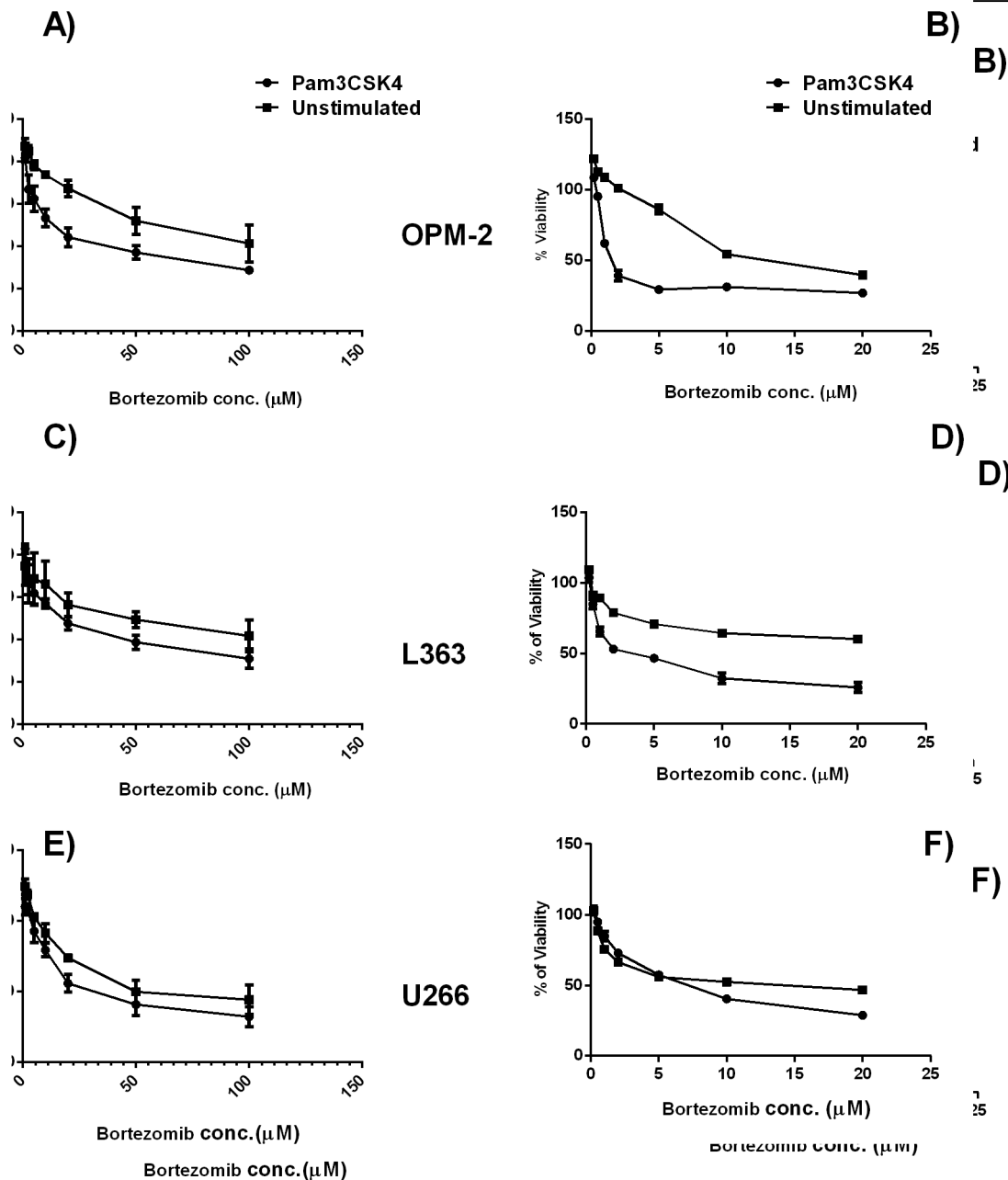


Figure 4. Pam3CSK4 increased sensitivity of HMCLs to bortezomib in the context of BMSCs. Myeloma cells were stimulated with Pam3CSK4 for 24 hours, and exposed to increasing drug concentrations in an acute manner. Panels A, C, E: HMCL adhered to BMSCs. Panels B, D, F: HMCLs in stroma-free conditions. OPM-2 (A, B), L363 (C, D) and U266 (E, F) HMCLs. Pam3CSK4 stimulated cells displayed a higher sensitivity to bortezomib in the presence or absence of stroma, however, the level of sensitivity was lower for HMCLs in BMSCs context than cells in the stroma-free condition. IC50s (μM of the drug): OPM-2: **stroma**, Pam3 (7.5 μM), unst (38.5 μM); **stroma-free**, Pam3 (1.9 μM), unst (15.6 μM); L363: **stroma**, Pam3 (12.8 μM), unst (41.1 μM); **stroma-free**, Pam3 (5.0 μM), unst (14.9 μM); U266: **stroma**, Pam3 (13.5 μM), unst (14.9 μM); **stroma-free**, Pam3 (5.6 μM), unst (11.2 μM). doi:10.1371/journal.pone.0096608.g004

TLR-1 Triggering in HMCLs has Different Modulatory Effects on their Adhesion to BMSCs

We next investigated the effect of TLR1/2 ligand Pam3CSK4 on the interaction of MM cells with BMSCs, regarding the critical importance of this interaction in MM biology and pathogenesis. TLR1/2 activation modulated adhesion of HMCLs to BMSCs, yet with a heterogeneous pattern (Fig. 2). Fravel, L363, UM-6,

UM-9 and U266 showed a dose-dependent increase in adhesion. Interestingly, Fravel and UM-6 showed quite low baseline adhesions (3.4% and 12%, respectively) which were highly increased with 5 μg/ml Pam3CSK4 (13% and 40%, respectively). OPM-1 and OPM-2 showed a dose-dependent decrease in adhesion. NCI-H929 showed maximal reduction of adhesion already at 1 μg/ml Pam3CSK4. The response of RPMI 8226 to

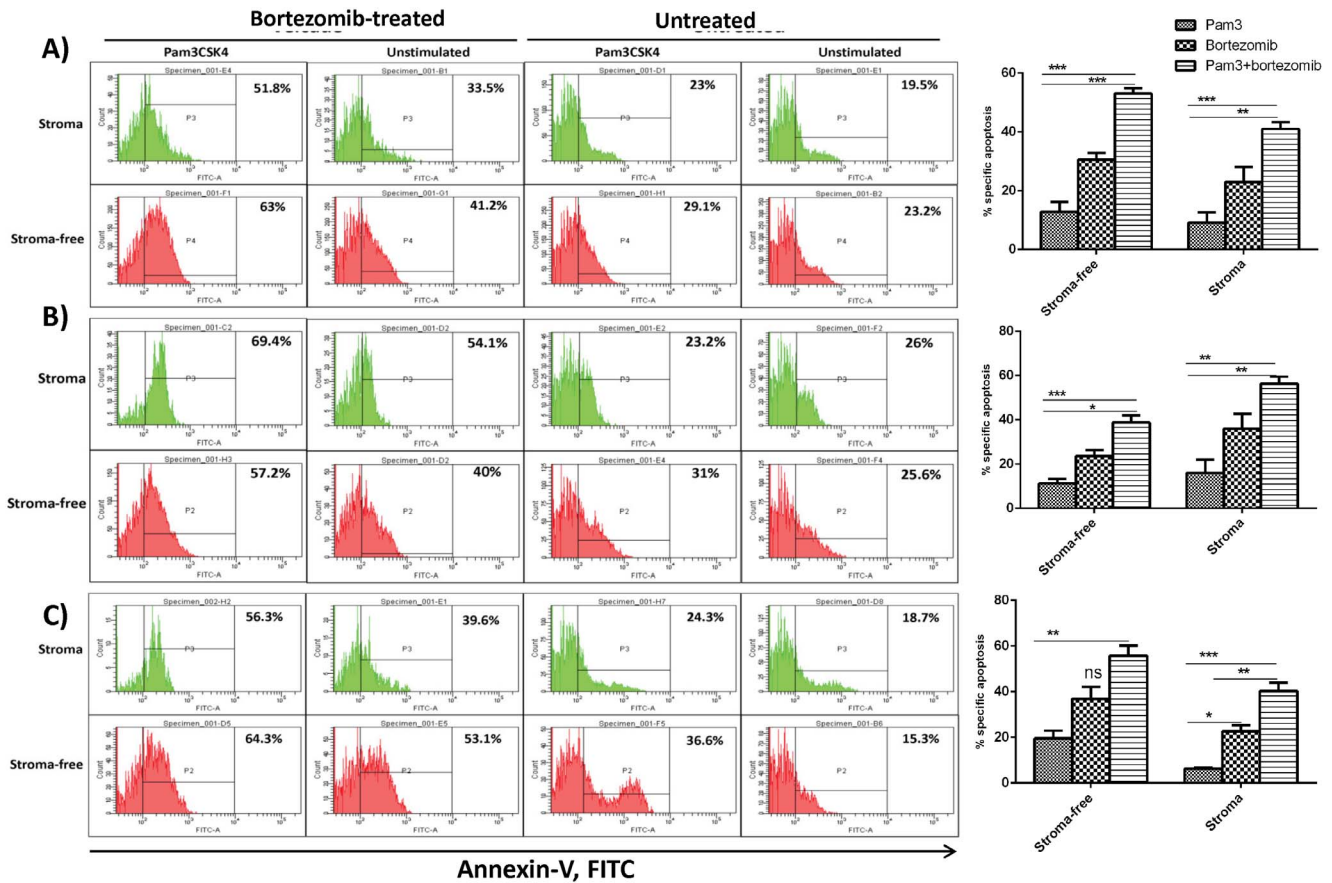


Figure 5. The apoptosis enhancing effect of Pam3CSK4 on HMCLs in the context of HS-5 stromal cells. Apoptosis in L363 (panel A), OPM-2 (panel B) and U266 (panel C) was determined by flow cytometric analysis of annexin-V binding. Percentage of apoptotic cells was calculated by selecting the gated CD138 positive cells. Left panels are one representative out of three separate experiments for each cell line and the right panels are statistical analyses of all experiments. HMCLs were stimulated for 24 hours with Pam3CSK4, adhered to HS-5 cells and then exposed to drug treatment as explained in materials and methods. The results are the statistical analyses of data in 3 separate experiments expressed as mean \pm SEM, * $P < 0.05$, ** $P < 0.01$, *** $P < 0.001$. doi:10.1371/journal.pone.0096608.g005

TLR1/2 stimulation was inconsistent with respect to adhesion and therefore not further analyzed (data not shown).

Modulation of HMCLs Adhesion to BMSCs following TLR-1 Activation Possibly Involves Different Integrin Molecules

Based on the above findings, it seemed conceivable that $\beta 7$ integrin could mediate down-regulatory and $\alpha V\beta 3$ and $\alpha 4$ integrins up-regulatory effects of Pam3CSK4 on adhesion of HMCLs to BMSCs. To investigate this, we used anti- $\beta 7$ antibody to block baseline adhesion to BMSCs in OPM-1, OPM-2, and NCI-H929. The anti- $\beta 7$ antibody decreased baseline adhesion in these lines as much as 17%, 20%, and 25%, respectively (Fig. 3, panel A), indicating that $\beta 7$ was involved in the adhesion of these HMCLs.

To investigate the involvement of $\alpha V\beta 3$ and $\alpha 4$ integrins in adhesion, anti- $\alpha V\beta 3$ and anti- $\alpha 4$ antibodies were used to inhibit adhesion of Fravel, L363, UM-6 and U266 cells at baseline or upon Pam3CSK4 stimulation (Fig. 3, panel B). The experiments indicated that Pam3CSK4-induced upregulation of adhesion was mediated by $\alpha 4$ and/or $\alpha V\beta 3$ integrins. Adhesion of Fravel, L363 and U266 cell lines was shown to be mainly $\alpha 4$ -mediated, as anti- $\alpha 4$ fully blocked the up-regulated level plus a large part of the baseline adhesion.

Blockade of $\alpha V\beta 3$ integrin reduced Pam3CSK4-induced adhesion in Fravel, L363 and U266 cells but not as significantly as $\alpha 4$ blockade. This suggested that $\alpha 4$ integrin subunit was one of the main adhesion molecules engaged by above cell lines in adhesion to BMSCs. Adhesion of UM-6 was regulated by both $\alpha 4$ and $\alpha V\beta 3$ integrins. These data confirmed the contribution of $\beta 7$, $\alpha 4$, $\alpha V\beta 3$ integrins to adhesion of HMCLs to stromal cells and suggested that there might be a heterogeneous response to TLR1/2 stimulation on their functional expression in HMCLs.

TLR1 Activation in HMCLs Enhances Cytotoxic Effects of Bortezomib in the Context of Bone Marrow Stromal Cells

Drug resistance of HMCLs can be greatly influenced by adhesion. In the next experiments, we investigated if the changed adhesion due to TLR1/2 stimulation would influence the drug sensitivity of HMCLs. L363 and U266 which showed upregulated and OPM-2 which showed downregulated adhesion following Pam3CSK4 treatment were selected for further investigation. As expected, IC50 of the HMCLs for bortezomib was higher when they adhered to stroma cells (Fig. 4). However, Pam3CSK4 treatment increased drug sensitivity of all HMCLs to bortezomib in the presence or absence of stromal cells suggesting that the Pam3CSK4-induced increases in bortezomib cytotoxicity were adhesion-independent.

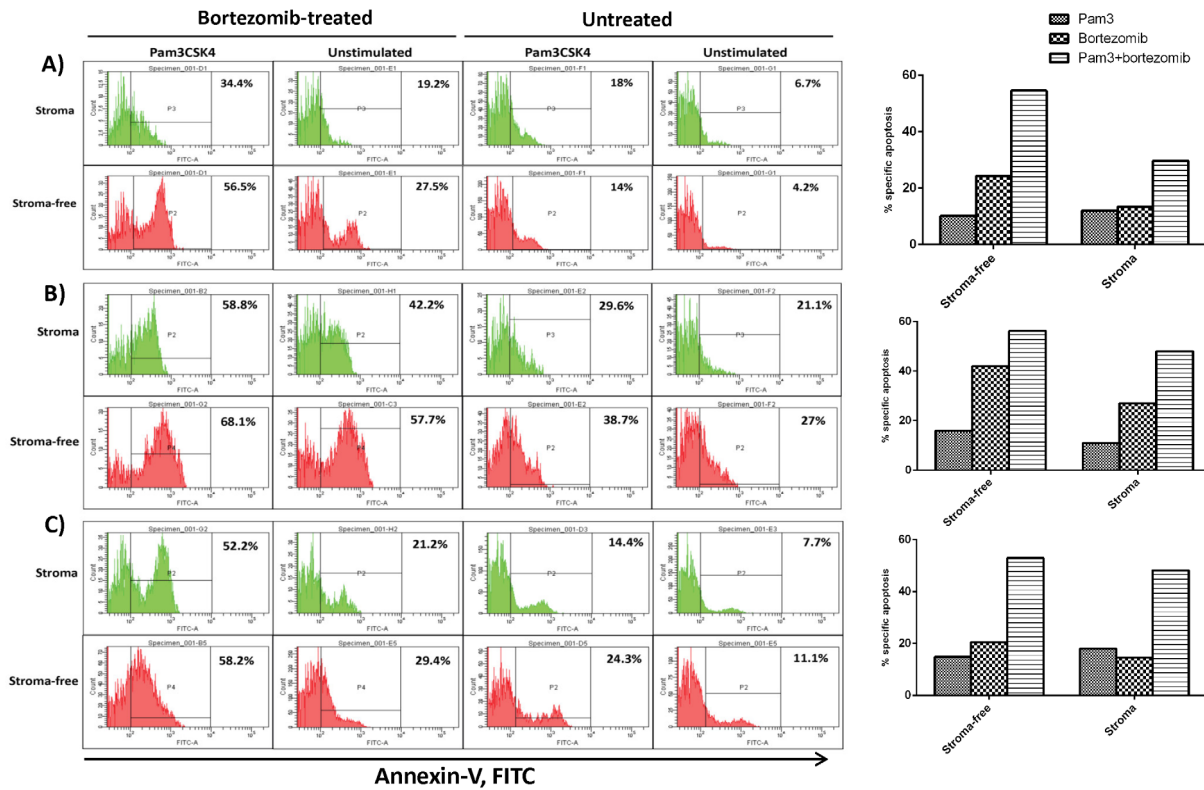


Figure 6. The apoptosis enhancing effect of Pam3CSK4 on HMCLs in the context of myeloma patient bone marrow stromal cells. L363 (panel A), OPM-2 (panel B) and U266 (panel C) were stimulated for 24 hours with Pam3CSK4, adhered to human bone marrow isolated stromal cells and then exposed to drug treatment as explained in materials and methods. Data are representative for the analysis of two MM primary BMSC samples. doi:10.1371/journal.pone.0096608.g006

TLR1 Activation in HMCLs Enhances the Apoptotic Response to Bortezomib in the Context of Bone Marrow Stromal Cells

Next, we explored if increased cytotoxicity to bortezomib in HMCLs after treatment with Pam3CSK4 was due to an increase in apoptosis. HMCLs were first stimulated with Pam3CSK4 for 24 hours, washed and exposed to acute bortezomib treatment and seeded onto HS-5 cells (Fig. 5) or patient BMSCs (Fig. 6), as described in materials and methods. In gated CD138⁺ cells, the percentage of annexin-V positive cells was determined to calculate specific apoptosis. As depicted in figure 5, Pam3CSK4 treatment increased the level of bortezomib-induced apoptosis in all cell lines in the presence or absence of HS-5 cells, which further confirmed the adhesion-independent effect of TLR1/2 stimulation on HMCLs viability. Of note, Pam3CSK4 itself also left a partial apoptotic effect which was more pronounced in U266 cell line. Interestingly, varying levels of cell adhesion-mediated drug resistance (CAM-DR) were detected in the context of patient primary BMSCs for all cell lines, which was reversed by the Pam3CSK4+bortezomib treatment (Fig. 6). These findings demonstrate that Pam3CSK4 increases the apoptotic effect of bortezomib in the context of BMSCs.

Apoptosis Enhancing Effects of Pam3CSK4 on HMCLs in BMSCs Context may be Caspase Dependent

Only limited details are known on the effect of TLR activation on apoptotic signaling pathways. We further investigated if Pam3CSK4 could mediate increased apoptosis via caspase-3 activation. HMCLs were first Pam3CSK4-stimulated and drug-

treated as detailed in materials and methods. Using FACS analysis the percent apoptotic cells was determined after gating CD138-positive cells (Fig. 7). As expected bortezomib increased cleaved caspase-3 in all conditions for all cell lines indicating it activated caspase-3 pathway [31]. Treatment with Pam3CSK4 alone augmented the cleaved caspase-3 level to different extents in the 3 HMCLs and combination of Pam3CSK4 with bortezomib increased the level of cleaved caspase-3 mostly in an additive manner. Above findings suggest that Pam3CSK4 may contribute to apoptosis through the activation of caspase-3.

Discussion

In the present study, we found that TLR1/2 triggering results in a heterogeneous functional response of HMCLs in terms of integrin surface expression and adhesion to BMSCs. OPM-1, OPM-2 and NCI-H929 myeloma cell lines showed a decrease in adhesion to BMSCs after TLR-1/2 activation, which was accompanied with a down-regulation in surface expression of $\beta 7$ integrin. Furthermore, blocking experiments confirmed a significant contribution of $\beta 7$ integrin in their adhesion, although this may not exclude the involvement of other integrins such as $\alpha 4$ and $\alpha V\beta 3$ in their basal adhesion. Additionally, OPM-1, OPM-2 and NCI-H929 displayed significant increases in surface expression of $\alpha 4$ and $\alpha V\beta 3$ following TLR-1/2 activation, but this upregulation appeared to have no functional effects in the adhesion to BMSCs. The integrin $\alpha 4\beta 7$ has also been involved in adhesion of MM peripheral B cells to FN and BMSC [32]. Of note, the anti- $\beta 7$ antibody used for blocking experiments is well known to detect only $\beta 7$ epitopes regardless of its heterodimer partners [33], and

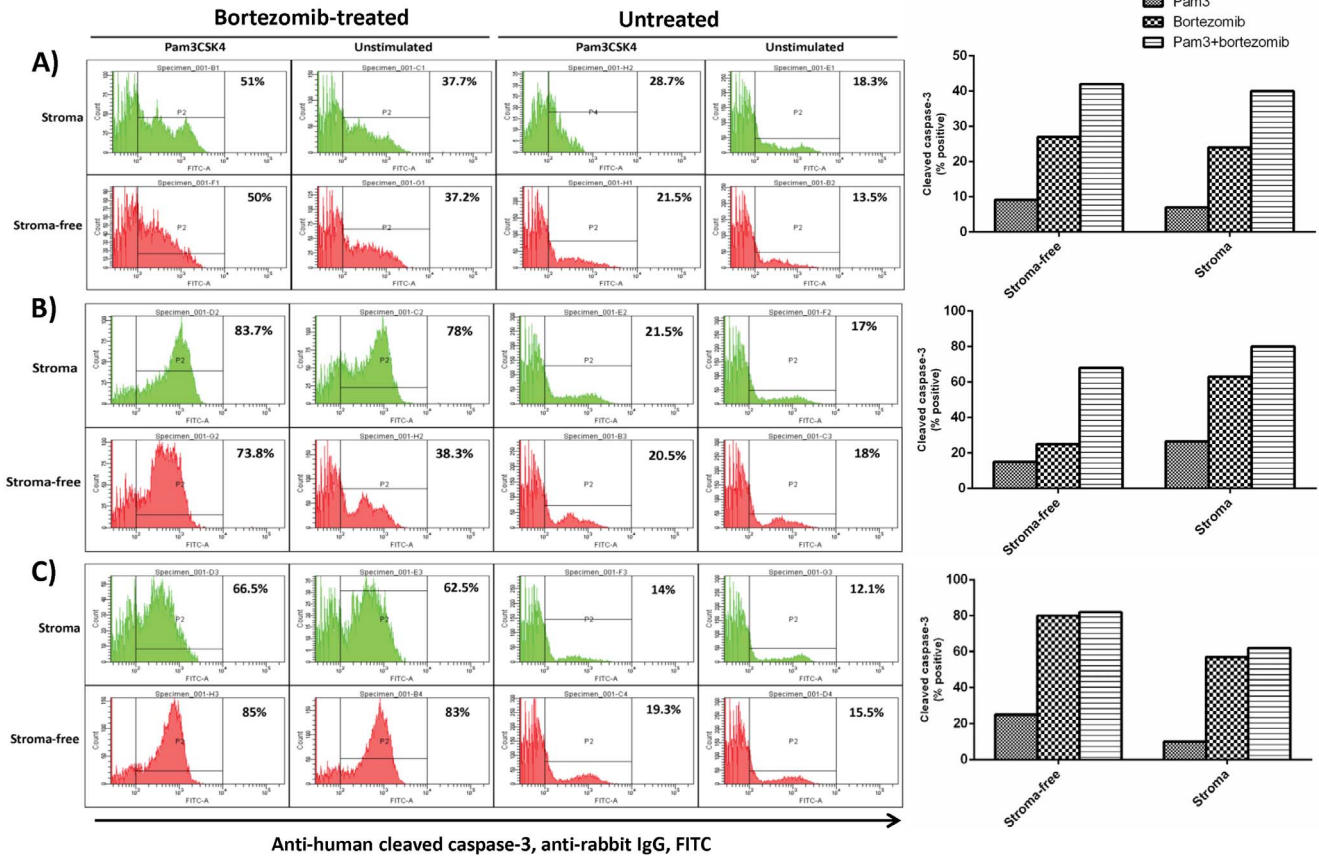


Figure 7. Pam3CSK4 induces apoptosis enhancing effects in bortezomib-treated HMCLs partly through caspase-3 activation. L363 (panel A), OPM-2 (panel B) and U266 (panel C) were stimulated for 24 hours with Pam3CSK4, adhered to primary human bone marrow isolated stromal cells and then exposed to drug treatment and cleaved caspase-3 FACS analysis, as explained in materials and methods. Pam3CSK4 alone weakly induced cleaved caspase-3 expression (compared to baseline) and its combination with bortezomib induced a higher level of cleaved caspase-3 protein in L363 and OPM-2 cell lines. Data are representative for the analysis of two MM primary BMSC samples. doi:10.1371/journal.pone.0096608.g007

thus affirms the involvement of this integrin in adhesion to BMSCs. Fravel, L363, UM-6, UM-9 and U266 HMCLs showed an increase in adhesion to BMSCs upon TLR1/2 activation. This up-regulated adhesion was demonstrated to be $\alpha4$ and/or $\alpha V\beta3$ mediated and these two integrins are also involved in part of the baseline adhesion. It is well established that these two integrins can mediate binding of MM cells to FN and BMSCs [34,35], and $\alpha V\beta3$ has been shown to be involved in invasiveness of MM cells [35]. Moreover, overexpression of $\alpha V\beta3$ in cervical cancer has been associated with poor prognosis [36]. On the other hand, in normal human PBMCs, TLR1/2 activation increased surface expression of $\alpha4$ and $\beta7$ integrins in T cells, B cells and monocytes (unpublished observation), which rather supports a common mechanism by TLR1/2 activation for $\alpha4$ modulation, but also indicates a specific mechanism (possibly unique to MM cells) for $\beta7$ modulation. Preliminary experiments in siRNA-treated HMCL to knockdown MyD88 indicated the involvement of MyD88 in the TLR1/2-induced modulatory effects on expression of integrins (data not shown). Taken together, these findings imply that TLR1/2 triggering can differentially modulate $\alpha4$ -, $\alpha V\beta3$ - and $\beta7$ surface expression on MM cells and $\alpha4$ -, $\alpha V\beta3$ - and $\beta7$ -mediated adhesion to stromal cells.

Adhesion of MM cells to BMSCs is well known to render myeloma cells resistant against cytotoxic and apoptotic signals [37,38,39,40,41]. Furthermore, adhesion-induced drug resistance

is suggested to be associated with increased adhesion to fibronectin and with up-regulation of $\alpha4$, thus cells with a higher expression of this integrin molecule display a drug-resistant phenotype [30]. In this study it is shown that Pam3CSK4 treatment upregulates expression of $\alpha4$ in all HMCLs. However, some cell lines showed increased adhesion to BMSCs, while others showed decreased adhesion. The effect TLR1/2 activation in HMCLs on viability and drug sensitivity was further shown in three cell lines L363, OPM-2 and U266. Interestingly, Pam3CSK4 increased sensitivity (lower IC50) to bortezomib in the presence or absence of BMSCs, which was accompanied with increased apoptosis. Pam3CSK4 alone stimulated a low apoptotic effect in all HMCLs in the presence or absence of HS-5 or primary BMSCs, while combination with bortezomib induced a higher level of apoptosis. It should be noted that CAM-DR detected in some cell lines was completely eliminated by combined treatment of Pam3CSK4+ bortezomib. These findings suggest that the effect of TLR1/2 stimulation on adhesion to BMSCs does not control their drug resistance or sensitivity. Thus, upregulation of adhesion to BMSCs which was shown to be mostly $\alpha4$ integrin-mediated did not reduce drug-induced cell death. Likewise, downregulation of adhesion to BMSCs which was shown to be $\beta7$ integrin-mediated did not increase drug-induced cell death. A recent study demonstrated that knocking down the $\beta7$ integrin gene in MM cells decreased their adhesion to FN and BMSCs and reversed

CAM-DR [33]. Additionally, blocking $\alpha 4$ integrin with specific antibodies increased their drug sensitivity in MM cells [30,42], and bortezomib reversed CAM-DR in MM cells through downregulation of $\alpha 4$ integrin [43]. These studies support involvement of $\alpha 4$ and $\beta 7$ integrins in controlling drug sensitivity of MM cells. However, in this study, Pam3CSK4 apparently bypassed this involvement and increased drug sensitivity of HMCLs irrespective of their adhesion pattern.

Bortezomib stimulates caspase-3 activation in MM cells, triggering apoptosis [31]. The TLR1/2 ligand (Pam3CSK4) has been shown to induce apoptosis in monocytes [44], but whether it activates caspase-3 in MM cells has not been demonstrated. Here we show that Pam3CSK4 increases the level of activated caspase-3 in HMCLs in the presence or absence of BMSCs. Combining bortezomib with Pam3CSK4 increased the level of cleaved caspase-3 in L363 and OPM-2 but not in U266. The level of cleaved caspase-3 induced by bortezomib alone paralleled CAM-DR in L363 and OPM-2 cell lines (stroma compared to stroma-free conditions) but not in U266. Although the role of caspase-3 in the induction of apoptosis is well-established, other studies showed that other isoforms such as caspase-2 contributes to bortezomib-induced apoptosis in HMCL [45]. Our study also suggests that

Pam3CSK4 may engage other mechanisms than caspase-3 to enhance bortezomib-induced apoptosis in HMCLs, and that inhibition of caspase signaling may only partly explain CAM-DR at least in some HMCLs. Further studies using specific inhibitors or expression-knockdown approaches should delineate the role of different caspase isoforms in TLR1/2-stimulated apoptosis in MM cells.

In summary, this study is the first to delineate the modulatory effects of TLR1/2 triggering on adhesion of HMCLs to BMSCs and identify the integrin molecules involved in this interaction. It shows that following TLR1/2 activation on HMCLs, expression of $\beta 7$ integrin is downregulated, and that Pam3CSK4 increases drug sensitivity of HMCLs in the context of BMSCs. On this basis, although further research is essential, our findings suggest TLR1/2 as a potential target in MM to decrease resistance to the cytotoxic action of chemotherapeutic agents.

Author Contributions

Conceived and designed the experiments: JA TM JG FR. Performed the experiments: JA. Analyzed the data: JA TM FR. Contributed reagents/materials/analysis tools: JA TM. Wrote the paper: JA FR.

References

- Anderson KC, Carrasco RD (2011) Pathogenesis of myeloma. *Annu Rev Pathol* 6: 249–274.
- Hideshima T, Mitsiades C, Tonon G, Richardson PG, Anderson KC (2007) Understanding multiple myeloma pathogenesis in the bone marrow to identify new therapeutic targets. *Nat Rev Cancer* 7: 585–598.
- Mitsiades CS, McMillin DW, Klippel S, Hideshima T, Chauhan D, et al. (2007) The role of the bone marrow microenvironment in the pathophysiology of myeloma and its significance in the development of more effective therapies. *Hematol Oncol Clin North Am* 21: 1007–1034.
- Bloem AC, Lamme T, de Smet M, Kok H, Vooijs W, et al. (1998) Long-term bone marrow cultured stromal cells regulate myeloma tumour growth in vitro: studies with primary tumour cells and LTBMCC-dependent cell lines. *Br J Haematol* 100: 166–175.
- Tai YT, Li XF, Breitkreutz I, Song W, Neri P, et al. (2006) Role of B-cell-activating factor in adhesion and growth of human multiple myeloma cells in the bone marrow microenvironment. *Cancer Res* 66: 6675–6682.
- Gupta D, Treon SP, Shima Y, Hideshima T, Podar K, et al. (2001) Adherence of multiple myeloma cells to bone marrow stromal cells upregulates vascular endothelial growth factor secretion: therapeutic applications. *Leukemia* 15: 1950–1961.
- Abdi J, Engels F, Garssen J, Redegeld F (2011) The role of toll-like receptor mediated signalling in the pathogenesis of multiple myeloma. *Crit Rev Oncol Hematol* 80: 225–240.
- Chiron D, Bekeredjian-Ding I, Pellat-Deceunynck C, Bataille R, Jego G (2008) Toll-like receptors: lessons to learn from normal and malignant human B cells. *Blood* 112: 2205–2213.
- Chiron D, Pellat-Deceunynck C, Amiot M, Bataille R, Jego G (2009) TLR3 ligand induces NF- κ B activation and various fates of multiple myeloma cells depending on IFN- α production. *J Immunol* 182: 4471–4478.
- Bohnhorst J, Rasmussen T, Moen SH, Flottum M, Knudsen L, et al. (2006) Toll-like receptors mediate proliferation and survival of multiple myeloma cells. *Leukemia* 20: 1138–1144.
- Xu Y, Zhao Y, Huang H, Chen G, Wu X, et al. (2010) Expression and function of toll-like receptors in multiple myeloma patients: toll-like receptor ligands promote multiple myeloma cell growth and survival via activation of nuclear factor- κ B. *Br J Haematol* 150: 543–553.
- Abdi J, Mutis T, Garssen J, Redegeld F (2013) Characterization of the Toll-like Receptor Expression Profile in Human Multiple Myeloma Cells. *PLoS One* 8: e60671.
- Chen R, Alvero AB, Silasi DA, Mor G (2007) Inflammation, cancer and chemoresistance: taking advantage of the toll-like receptor signaling pathway. *Am J Reprod Immunol* 57: 93–107.
- Rakoff-Nahoum S, Medzhitov R (2009) Toll-like receptors and cancer. *Nat Rev Cancer* 9: 57–63.
- Chen R, Alvero AB, Silasi DA, Steffensen KD, Mor G (2008) Cancers take their Toll—the function and regulation of Toll-like receptors in cancer cells. *Oncogene* 27: 225–233.
- Chen K, Huang J, Gong W, Iribarren P, Dunlop NM, et al. (2007) Toll-like receptors in inflammation, infection and cancer. *Int Immunopharmacol* 7: 1271–1285.
- Pikarsky E, Porat RM, Stein I, Abramovitch R, Amit S, et al. (2004) NF- κ B functions as a tumour promoter in inflammation-associated cancer. *Nature* 431: 461–466.
- Maeda S, Omata M (2008) Inflammation and cancer: role of nuclear factor- κ B activation. *Cancer Sci* 99: 836–842.
- Klein B (2010) Positioning NK- κ B in multiple myeloma. *Blood* 115: 3422–3424.
- Demchenko YN, Glebov OK, Zingone A, Keats JJ, Bergsagel PL, et al. (2010) Classical and/or alternative NF- κ B pathway activation in multiple myeloma. *Blood* 115: 3541–3552.
- Kawai T, Akira S (2010) The role of pattern-recognition receptors in innate immunity: update on Toll-like receptors. *Nat Immunol* 11: 373–384.
- Kawai T, Akira S (2007) Signaling to NF- κ B by Toll-like receptors. *Trends Mol Med* 13: 460–469.
- Zhang Y, Xu CB, Cardell LO (2009) Long-term exposure to IL-1 β enhances Toll-IL-1 receptor-mediated inflammatory signaling in murine airway hyperresponsiveness. *Eur Cytokine Netw* 20: 148–156.
- Hung C-H, Wu D, Lin F-Y, Yuan R-Y, Hu CJ (2010) Toll-like Receptor 4 and Vascular Cell Adhesion Molecule 1 in Monocyte-Endothelium Adhesion Induced by Lipopolysaccharide. *J Exp Clin Med* 2: 297–301.
- Omagari D, Mikami Y, Suguro H, Sunagawa K, Asano M, et al. (2009) Poly I:C-induced expression of intercellular adhesion molecule-1 in intestinal epithelial cells. *Clin Exp Immunol* 156: 294–302.
- Hennessy EJ, Sheedy FJ, Santamaria D, Barbacid M, O'Neill LA (2011) Toll-like receptor-4 (TLR4) down-regulates microRNA-107, increasing macrophage adhesion via cyclin-dependent kinase 6. *J Biol Chem* 286: 25531–25539.
- Abdi J, Mutis T, Garssen J, Redegeld F (2013) Stimulation of Toll-like receptor-1/2 combined with Velcade increases cytotoxicity to human multiple myeloma cells. *Blood Cancer J* 3: e119.
- van de Donk NW, Kamphuis MM, Lokhorst HM, Bloem AC (2002) The cholesterol lowering drug lovastatin induces cell death in myeloma plasma cells. *Leukemia* 16: 1362–1371.
- van der Veer MS, de Weers M, van Kessel B, Bakker JM, Wittebol S, et al. (2011) Towards effective immunotherapy of myeloma: enhanced elimination of myeloma cells by combination of lenalidomide with the human CD38 monoclonal antibody daratumumab. *Haematologica* 96: 284–290.
- Damiano JS, Cress AE, Hazlehurst LA, Shil AA, Dalton WS (1999) Cell adhesion mediated drug resistance (CAM-DR): role of integrins and resistance to apoptosis in human myeloma cell lines. *Blood* 93: 1658–1667.
- Saha MN, Jiang H, Jayakar J, Reece D, Branch DR, et al. (2010) MDM2 antagonist nutlin plus proteasome inhibitor velcade combination displays a synergistic anti-myeloma activity. *Cancer Biol Ther* 9: 936–944.
- Masellis-Smith A, Belch AR, Mant MJ, Pilarski LM (1997) Adhesion of multiple myeloma peripheral blood B cells to bone marrow fibroblasts: a requirement for CD44 and α 4 β 7. *Cancer Res* 57: 930–936.
- Neri P, Ren L, Azab AK, Brentnall M, Gratton K, et al. (2011) Integrin β 7-mediated regulation of multiple myeloma cell adhesion, migration, and invasion. *Blood* 117: 6202–6213.
- Sanz-Rodriguez F, Ruiz-Velasco N, Pascual-Salcedo D, Teixido J (1999) Characterization of VLA-4-dependent myeloma cell adhesion to fibronectin and VCAM-1. *Br J Haematol* 107: 825–834.

35. Ria R, Vacca A, Ribatti D, Di Raimondo F, Merchionne F, et al. (2002) Alpha(v)beta(3) integrin engagement enhances cell invasiveness in human multiple myeloma. *Haematologica* 87: 836–845.
36. Werner J, Decarlo CA, Escott N, Zehbe I, Ulanova M (2012) Expression of integrins and Toll-like receptors in cervical cancer: effect of infectious agents. *Innate Immun* 18: 55–69.
37. Nefedova Y, Landowski TH, Dalton WS (2003) Bone marrow stromal-derived soluble factors and direct cell contact contribute to de novo drug resistance of myeloma cells by distinct mechanisms. *Leukemia* 17: 1175–1182.
38. Wang X, Li C, Ju S, Wang Y, Wang H, et al. (2011) Myeloma cell adhesion to bone marrow stromal cells confers drug resistance by microRNA-21 up-regulation. *Leuk Lymphoma* 52: 1991–1998.
39. Markovina S, Callander NS, O'Connor SL, Xu G, Shi Y, et al. (2010) Bone marrow stromal cells from multiple myeloma patients uniquely induce bortezomib resistant NF-kappaB activity in myeloma cells. *Mol Cancer* 9: 176.
40. Nefedova Y, Cheng P, Alsina M, Dalton WS, Gabrilovich DI (2004) Involvement of Notch-1 signaling in bone marrow stroma-mediated de novo drug resistance of myeloma and other malignant lymphoid cell lines. *Blood* 103: 3503–3510.
41. Perez LE, Parquet N, Shain K, Nimmanapalli R, Alsina M, et al. (2008) Bone marrow stroma confers resistance to Apo2 ligand/TRAIL in multiple myeloma in part by regulating c-FLIP. *J Immunol* 180: 1545–1555.
42. Damiano JS, Dalton WS (2000) Integrin-mediated drug resistance in multiple myeloma. *Leuk Lymphoma* 38: 71–81.
43. Noborio-Hatano K, Kikuchi J, Takatoku M, Shimizu R, Wada T, et al. (2009) Bortezomib overcomes cell-adhesion-mediated drug resistance through down-regulation of VLA-4 expression in multiple myeloma. *Oncogene* 28: 231–242.
44. Aliprantis AO, Yang RB, Mark MR, Suggett S, Devaux B, et al. (1999) Cell activation and apoptosis by bacterial lipoproteins through toll-like receptor-2. *Science* 285: 736–739.
45. Gu H, Chen X, Gao G, Dong H (2008) Caspase-2 functions upstream of mitochondria in endoplasmic reticulum stress-induced apoptosis by bortezomib in human myeloma cells. *Mol Cancer Ther* 7(8): 2298–2307.