



Published in final edited form as:

*Int Psychogeriatr.* 2014 June ; 26(6): 977–985. doi:10.1017/S1041610214000167.

## APOE $\epsilon$ 4 and the risk for Alzheimer disease and cognitive decline in African Americans and Yoruba

Hugh C. Hendrie<sup>1,2,3</sup>, Jill Murrell<sup>4</sup>, Olusegun Baiyewu<sup>5</sup>, Kathleen A. Lane<sup>6</sup>, Christianna Purnell<sup>2</sup>, Adesola Ogunniyi<sup>7</sup>, Frederick W. Unverzagt<sup>3</sup>, Kathleen Hall<sup>3</sup>, Christopher M. Callahan<sup>1,2,8</sup>, Andrew J. Saykin<sup>9</sup>, Oye Gureje<sup>5</sup>, Ann Hake<sup>10</sup>, Tatiana Foroud<sup>11</sup>, and Sujuan Gao<sup>6</sup>

<sup>1</sup>Indiana University Center for Aging Research, Indianapolis, Indiana, USA

<sup>2</sup>Regenstrief Institute, Inc., Indianapolis, Indiana, USA

<sup>3</sup>Department of Psychiatry, Indiana University School of Medicine, Indianapolis, Indiana, USA

<sup>4</sup>Department of Pathology and Laboratory Medicine, Indiana University School of Medicine, Indianapolis, Indiana, USA

<sup>5</sup>Department of Psychiatry, College of Medicine, University of Ibadan, Ibadan, Nigeria

<sup>6</sup>Department of Biostatistics, Indiana University School of Medicine, Indianapolis, Indiana, USA

<sup>7</sup>Department of Medicine, College of Medicine, University of Ibadan, Ibadan, Nigeria

<sup>8</sup>Department of Medicine, Indiana University School of Medicine, Indianapolis, Indiana, USA

<sup>9</sup>Department of Radiology and Imaging Services, Indiana University School of Medicine, Indianapolis, Indiana, USA

<sup>10</sup>Department of Neurology, Indiana University School of Medicine, Indianapolis, Indiana, USA

<sup>11</sup>Department of Medical and Molecular Genetics, Indiana University School of Medicine, Indianapolis, Indiana, USA

### Abstract

**Background**—There is little information on the association of the APOE $\epsilon$ 4 allele and AD risk in African populations. In previous analyses from the Indianapolis-Ibadan dementia project, we have reported that APOE  $\epsilon$ 4 increased the risk for Alzheimer’s disease (AD) in African Americans but

---

© International Psychogeriatric Association 2014

Correspondence should be addressed to: Hugh C. Hendrie, MB, ChB, DSc, Indiana University Center for Aging Research, 410 W 10th St., Suite 2000, Indianapolis, IN 46202, USA. Phone: (317) 423-5591; Fax: (317) 423-5695. hhendri@iupui.edu.

#### Description of authors’ roles

Hugh C. Hendrie designed and implemented the study, analyzed the data, interpreted the results, and wrote the paper. Kathleen A. Lane analyzed the data, interpreted the results, and wrote the paper. Christianna Purnell wrote and reviewed the paper. Sujuan Gao designed the study, analyzed the data, interpreted the results, and reviewed the paper. Olusegun Baiyewu, Ann Hake, Adesola Ogunniyi, Oye Gureje, Frederick W. Unverzagt, Jill Murrell, and Kathleen Hall designed and implemented the study, interpreted the results, and reviewed the paper. Christopher M. Callahan, Andrew J. Saykin, and Tatiana Foroud interpreted the results and reviewed the paper.

#### Conflict of interest

This research was supported by NIH grant RO1 AG09956 and NIH grant P30 AG10133.

not in Yoruba. This study represents a replication of this earlier work using enriched cohorts and extending the analysis to include cognitive decline.

**Methods**—In this longitudinal study of two community dwelling cohorts of elderly Yoruba and African Americans, APOE genotyping was conducted from blood samples taken on or before 2001 (1,871 African Americans & 2,200 Yoruba). Mean follow up time was 8.5 years for African Americans and 8.8 years for Yoruba. The effects of heterozygosity or homozygosity of  $\epsilon 4$  and of the possession of  $\epsilon 4$  on time to incident AD and on cognitive decline were determined using Cox's proportional hazards regression and mixed effects models.

**Results**—After adjusting for covariates, one or two copies of the APOE  $\epsilon 4$  allele were significant risk factors for incident AD ( $p < 0.0001$ ) and cognitive decline in the African-American population ( $p < 0.001$ ). In the Yoruba, only homozygosity for APOE  $\epsilon 4$  was a significant risk factor for AD ( $p = 0.0002$ ) but not for cognitive decline ( $p = 0.2346$ ), however, possession of an  $\epsilon 4$  allele was significant for both incident AD ( $p = 0.0489$ ) and cognitive decline ( $p = 0.0425$ ).

**Conclusions**—In this large longitudinal comparative study, APOE  $\epsilon 4$  had a significant, but weaker, effect on incident AD and on cognitive decline in Yoruba than in African Americans. The reasons for these differences remain unclear.

## Keywords

Alzheimer disease; cognitive impairment; APOE  $\epsilon 4$ ; African Americans; Yoruba

## Introduction

The APOE  $\epsilon 4$  allele is a major risk factor for Alzheimer Disease (AD) and dementia in most populations (Farrer *et al.*, 1997; Chuang *et al.*, 2010; Ohara *et al.*, 2011). Early studies with African American cohorts reported inconsistent results (Farrer *et al.*, 1997; Sahota *et al.*, 1997). However, a recent meta-analysis has reported that the  $\epsilon 4$  allele is a risk factor for AD in African American populations with an odds ratio (OR) of 2.31 (Reitz *et al.*, 2013).

Few studies have examined the role of APOE in populations with African ancestry in non-African countries other than the US and fewer still in African populations. One study reported the  $\epsilon 4$  allele was significantly associated with AD in African Caribbean people but the magnitude of the association was small (Stewart *et al.*, 2001) and a preliminary analysis of cross sectional data from Kenya suggested that  $\epsilon 4$  was not a risk factor for AD (Chen *et al.*, 2010).

The role of the APOE  $\epsilon 4$  allele on cognitive decline has also been analyzed in samples from African American cohorts (Kuller *et al.*, 1998; Knopman *et al.*, 2009; Sawyer *et al.*, 2009). Two studies have reported that  $\epsilon 4$  is a risk factor for cognitive decline in African Americans with no discernible differences in effect size when compared with Caucasian populations (Knopman *et al.*, 2009; Sawyer *et al.*, 2009). There are no reports of the effects of  $\epsilon 4$  on cognitive decline in African cohorts. As part of the Indianapolis-Ibadan dementia project, we have previously reported that possession of the  $\epsilon 4$  allele was associated with a higher risk for AD for African Americans (Murrell *et al.*, 2006) whereas  $\epsilon 4$  was not associated with

increased risk for AD in Yoruba (Gureje *et al.*, 2006). However, the sample size was modest ( $n = 582$  for Yoruba,  $n = 480$  for African Americans) and the analyses included both prevalent and incident AD patients. With additional enrichment cohorts and longer follow-up, we now re-examine this outcome in both the Indianapolis and Ibadan sample, which includes a larger number of participants with incident AD. We also extend the analysis to test whether APOE  $\epsilon 4$  is associated with cognitive decline in both cohorts.

## Methods

### Study participants

Since 1992, we have been conducting a comparative, community-based epidemiologic study of prevalence, incidence, and risk factors for AD in populations of African origin: elderly African Americans in Indianapolis, Indiana, and Yoruba in Ibadan, Nigeria. The elderly Yoruba were residents of the Idikan area and adjacent wards in the more ancient parts of the city of Ibadan. Residents of the wards are typically small traders and craftsmen. Food comes from the local markets that surround the wards and is mostly locally grown.

A detailed description of the construction of the original cohorts from 1992 has been previously reported (Hendrie *et al.*, 2001). In 2001, new study participants of 70 years and over were recruited. Recruitment in Ibadan for both the baseline and enrichment samples involved a total population survey carried out by means of screening in a geographically defined area identifying participants 65 years and over at baseline and 70 years and over in 2001. In Indianapolis, the 65 years and older self-identified African American baseline cohort was constructed from a random sample based upon the 1990 census data with addresses being provided by the Indianapolis Water Company. For the enrichment sample, the project enrolled additional community dwelling participants randomly selected from Medicare records self-identified as African American and at least 70 years of age. The enriched sample included in Indianapolis, 1,893 participants who were added to the 749 survivors of the original cohort and in Ibadan, 1,939 participants were added to the 903 survivors. The surviving 1992 cohorts and the newly recruited 2001 cohorts were similar in basic demographics, age, and gender (Hendrie *et al.*, 2013). The institutional review boards of Indiana University School of Medicine and University of Ibadan approved the study.

### Study design

A two-stage design was used at each evaluation with in-home cognitive and functional evaluations for all participants followed by a full diagnostic workup of selected participants based on the performance of the first stage cognitive tests (Hendrie *et al.*, 2001). Baseline evaluation was in 1992 for the original cohorts and in 2001 for the enrichment cohorts with follow ups occurring in approximately two to three year intervals (1994, 1998, 2001, 2004, 2007, 2009, and only a screening conducted in 2011).

### Cognitive assessment

The Community Screening Interview for Dementia (CSID) was used during the first stage in-home evaluation with a cognitive assessment of the study participant and an interview with a close relative evaluating the daily functioning of the participant. The CSID was

developed by our group specifically for use in comparative epidemiological studies of dementia in culturally disparate populations (Hall *et al.*, 2000). The cognitive assessment in CSID evaluates multiple cognitive domains (language, attention and calculation, memory, orientation, praxis, and comprehension and motor response). For the analysis on cognitive decline, we used a cognitive score that incorporated all cognitive items from the screening exam. CSID scores range from 0 to 80, with higher scores indicating better cognitive functioning. We also investigated the CSID memory sub-score which ranged from 0–29.

### Clinical evaluation

Clinical evaluations included (1) a cognitive assessment adapted from the Consortium to Establish a Registry of Alzheimer's Disease (CERAD)(Morris *et al.*, 1989); (2) a standardized clinician examination that included neurologic and physical exams, and functional status review (the Clinician Home-based Interview to assess Function, CHIF) (Hendrie *et al.*, 2006); and (3) a structured interview recording symptoms and functional status with a close relative adapted from the Cambridge Examination for Mental Disorders of the Elderly informant interview (CAMDEX) (Hendrie *et al.*, 1988). Following the second stage of evaluation, participants were diagnosed as having normal cognitive function or dementia. Diagnosis was made in a consensus diagnostic conference of clinicians reviewing the cognitive test results, the clinician's assessment, the informant interview, and available medical records. Dementia was diagnosed with both the *Diagnostic and Statistical Manual of Mental Disorders, Revised Third Edition (DSM-III-R)*(American Psychiatric Association, 1987) and *International Classification of Diseases, 10th Revision (ICD-10)* (American Psychiatric Association Press, 1992) criteria. AD was diagnosed using criteria proposed by NINCDS/ADRDA (McKhann *et al.*, 1984).

### Other information

The design of this non-cognitive portion of the questionnaire was the result of extensive discussion between the Indianapolis/Ibadan investigators to identify questions which could be used harmoniously at both sites and involved a review of source documents such as CAMDEX (Hendrie *et al.*, 1988) and CERAD (Morris *et al.*, 1989). Demographic information including age, sex and education (years of education for African Americans, whether or not they attended school for the Yoruba) were available on all study participants. Information was also collected on whether the participant ever consumed alcohol or smoked regularly. In addition, medical conditions that may affect cognitive function were collected at each of the evaluation times. In particular, medical history of coronary heart disease (CHD), cancer, diabetes, heart attack, hypertension, Parkinson's disease, stroke, and depression were collected from self or informant reports as affirmative answers to whether the participants had ever been diagnosed or treated for these diseases.

### Blood samples

DNA was extracted from blood spots collected on filter paper and from fresh blood using standard procedures from participants at both sites who consented to the procedure at or before 2001. APOE genotypes were determined by HhaI digestion of amplified products (Hixson and Vernier, 1990). In the African Americans, 1919 (48.2%) out of 3,983

participants without dementia at baseline had APOE genotyped. In the Yoruba, 2,226 (51.1%) out of 4,353 participants without dementia at baseline had APOE genotyped.

## Analysis

The primary study outcome was time from baseline to incident AD. Participants with prevalent dementia were excluded from the analyses. Those who were not diagnosed with dementia were censored on the last evaluation date. Since our follow-up evaluations were conducted at regularly scheduled short intervals (2 to 3 years), right censoring can be used instead of interval censoring (Leffondre *et al.*, 2013). Time of follow-up was used as the outcome variable since previous studies have shown that Cox's models using time of follow-up offer more robust results than chronological age in cohort studies (Chalise *et al.*, 2011).

Participants were divided into three APOE genotype groups:  $\epsilon 4$  homozygotes,  $\epsilon 4$  heterozygotes, and non-carriers. A separate analysis of  $\epsilon 4$  carriers and non-carriers was also conducted. Also, *t*-tests and  $\chi^2$  tests were used to compare continuous and categorical variables between those with incident AD and the cognitively normal. Univariate Cox proportional hazards regression models were used to identify demographic, life style, and illness variables significantly associated with incident AD at the  $\alpha = 0.15$  level within each site. These were included in multivariable models where forward and backwards selection modeling techniques were employed to identify a final parsimonious model with APOE genotype as the independent variable and covariates significant at the  $\alpha = 0.05$  level. Hazard ratios (HR), 95% confidence intervals (CI) and p-values are reported from the final models. Kaplan–Meier estimator and log-rank tests were used to estimate and compare the distributions of time to incident AD among the APOE genotype groups in each cohort.

Mixed effects models on repeated CSID scores over time were used to determine the effect of APOE genotype on cognitive decline for each site. An unstructured variance-covariance matrix was specified. Interactions between APOE and time since baseline were included in each model, where significant interaction would indicate differences in slope, i.e. change over time, by APOE status. Covariates identified in the Cox's model on incident AD were also included in the mixed effects models on cognitive decline.

To determine whether our results were subject to selection bias due to the lack of APOE genotypes, we compared demographic variables between participants included in the analyses and those without APOE genotypes using *t*-tests and  $\chi^2$  tests.

## Results

There were 1,919 African Americans and 2,226 Yoruba without dementia at baseline who had APOE genotyped. We excluded 48 African Americans and 26 Yoruba participants who had incident non-AD dementia from the analysis. Incident AD was diagnosed in 182 (9.7%) African Americans and 1,689 (90.3%) participants were determined to have normal cognition. Incident AD was diagnosed in 173 (7.9%) Yoruba participants and 2,027 (92.1%) were determined to have normal cognition. Median follow-up was 8.5 years for the African Americans and 8.8 years for the Yoruba.

Table 1 compares the baseline characteristics of the participants with incident AD with the participants with normal cognition within each cohort. For the African American cohort, the participants with incident AD were significantly more likely to possess at least one copy of the APOE  $\epsilon 4$  allele ( $p < 0.0001$ ), be older ( $p = 0.0002$ ), be less educated ( $p < 0.0001$ ), and be significantly more likely to come from the original cohort ( $p < 0.0001$ ). They were also significantly less likely to report having had diabetes ( $p = 0.0089$ ) and using alcohol ( $p = 0.0049$ ).

For the Yoruba cohort, the participants with incident AD were marginally more likely to possess at least one copy of APOE  $\epsilon 4$  ( $p = 0.0537$ ), significantly more likely to be older ( $p < 0.0001$ ), have no education ( $p = 0.0112$ ), be female ( $p < 0.0001$ ), and be from the original cohort ( $p < 0.0001$ ). They were also significantly less likely to report alcohol use ( $p < 0.0001$ ).

Figure 1 shows the Kaplan-Meier estimates of the survival function on time to AD for each cohort based upon the APOE genotypes. Log-rank tests found a significant difference between the three APOE groups in both the African Americans ( $p < 0.0001$ ) and in the Yoruba ( $p = 0.0046$ ).

Table 2 shows the results from the final Cox proportional hazards regression model on incident AD for both sites based upon number of APOE  $\epsilon 4$  alleles. In the African Americans, after adjusting for years of education, baseline age, and cohort status, both APOE  $\epsilon 4$  homozygotes and heterozygotes had significant increased risk of AD compared to non-carriers ( $p < 0.0001$ ). In the Yoruba, those participants homozygous for the  $\epsilon 4$  allele had significantly increased risk for AD compared to non-carriers after adjusting for age, gender, and history of smoking (HR = 2.95,  $p = 0.0002$ ). Notably, there was a non-significant increase in risk for AD among those heterozygous for the  $\epsilon 4$  allele as compared with those who did not have an  $\epsilon 4$  allele ( $p = 0.2362$ ). When APOE  $\epsilon 4$  carrier status was used in the Cox models to compare the presence (1 or 2 copies) vs. absence of the APOE  $\epsilon 4$  allele, the presence of the  $\epsilon 4$  allele significantly increased the risk for AD for the African Americans (HR 2.47; 95% CI 1.84–3.32;  $p < 0.0001$ ) and also for the Yoruba (HR 1.35; 95% CI 1.00–1.83;  $p = 0.0489$ ).

Table 3 shows the results from the mixed effects models on cognitive decline for the two cohorts for the number of APOE  $\epsilon 4$  alleles after adjusting for the covariates used in the Cox models. For the African Americans, there was a significant interaction between time since baseline and the APOE groups ( $p < 0.0001$ ) indicating significantly more decline for both the heterozygote and homozygote groups than non-carriers ( $p < 0.001$  for both). For the Yoruba, the interaction was not significant ( $p > 0.05$ ), indicating that the APOE  $\epsilon 4$  allele does not affect cognitive decline using this model. When APOE  $\epsilon 4$  carrier status was used in the model for cognitive decline,  $\epsilon 4$  carriers had significantly increased risk for cognitive decline in both the African Americans ( $p = 0.0001$ ) and in the Yoruba ( $p = 0.0425$ ).

When the memory subdomain was analyzed separately for cognitive decline using the number of  $\epsilon 4$  allele model, the results were similar to those for global cognitive decline (African Americans:  $\beta(\epsilon 4 \text{ homozygous}) = -0.26$ ,  $p = 0.0004$ ;  $\beta(\epsilon 4 \text{ heterozygous}) = -0.07$ ,  $p$



= 0.009; Yoruba:  $\beta(\epsilon 4 \text{ homozygous}) = -0.11$   $p = 0.054$ ,  $\beta(\epsilon 4 \text{ heterozygous}) = -0.02$   $p = 0.25$ ).

African American participants who did not have APOE genotyped were significantly less educated ( $p < 0.0001$ ) and more likely to be male ( $p = 0.0057$ ). In the Yoruba those without an APOE genotype were significantly older ( $p < 0.0001$ ) than those who were genotyped and included in this analysis. In both cohorts, participants without genotyping had slightly lower cognitive scores at baseline than those who were genotyped ( $p < 0.0001$  for both).

## Discussion

In this analysis, the APOE  $\epsilon 4$  allele is a significant risk factor for incident AD in the African American cohort (homozygotes-HR: 4.12, CI: 2.33–7.28; heterozygotes-HR: 2.31, CI: 1.70–3.14, presence of an  $\epsilon 4$  allele, HR 2.47; 95% CI 1.84–3.32;  $p < 0.0001$ ). These results are consistent with our previously published results using smaller samples and with the results of the recently published Alzheimer Disease Genetic Consortium (ADGC) study which examined African American cohorts (Reitz *et al.*, 2013). These data indicate a dose dependent effect of the APOE  $\epsilon 4$  allele on AD risk in African Americans.

In contrast to our previous findings with Yoruba where we found no relationship with  $\epsilon 4$  and AD (Gureje *et al.*, 2006), in this analysis we did detect a significant association for incident AD with the presence of an APOE  $\epsilon 4$  allele (HR: 1.35 95%; CI:1.00–1.83). We also found a significant association with homozygosity but not heterozygosity (homozygotes HR: 2.95, CI: 1.67–5.19; heterozygotes-HR: 1.21, CI: 0.88–1.67). There are no other studies of the effect of  $\epsilon 4$  on incident AD in African populations with which to compare.

Despite the significant association between APOE  $\epsilon 4$  homozygosity and AD in the Yoruba, the association between  $\epsilon 4$  and AD remains weaker for Yoruba than for African Americans. There is no overlap in confidence limits between the 2 cohorts in the analysis of the effects on AD of the presence of the  $\epsilon 4$  allele. It is possible that these differences in  $\epsilon 4$  effect reflect genetic differences between the two cohorts. The greatest genetic diversity occurs in Sub-Saharan African populations, including Nigeria, where it has been estimated that the genetic variation exceeds that found amongst European populations (Tishkoff *et al.*, 2009). As a result, there may be unique variants segregating in the Nigerian population that may affect protein function and gene expression that, in turn, interact with environmental factors such as diet. Many of these variants are population specific and some are predicted to affect protein function (Tennesen *et al.*, 2012), modify chromatin accessibility, transcription factor binding (Degner *et al.*, 2012) and DNA methylation levels resulting in gene expression differences (Bell *et al.*, 2011). Patterns of genetic variation are shaped by demographic forces such as migration events, fluctuation in population size and by evolutionary forces such as natural selection and mutation. A classic example of this is the single base mutation in the *FY* gene (DuffyO) that in the homozygous state renders the individual resistant to malaria. It has been suggested that *APOE* has a meat adaptive function and evolved with an increase in consumption of animal tissue. The gene is thought to confer resistance to hypercholesterolemia and infections (Finch and Sapolsky, 1999; Finch and Stanford 2004) Another theory is that the  $\epsilon 4$  allele would be advantageous under seasonal

periods of starvation, due to its elevating effect of cholesterol which would otherwise be too low but detrimental in areas where animal fats were readily available (Corbo and Scacchi, 1999). APOE  $\epsilon 4$  may be advantageous in infections with pathogens requiring host lipid for survival. The high affinity  $\epsilon 4$  has for some lipids actually hindered their uptake by the pathogen (Martin, 1999). Thus, the  $\epsilon 4$  allele may be advantageous to the Yoruba where infectious disease stills plays an important role in health. On the other hand, under certain environmental conditions such as a high fat diet and low physical activity, individuals who carry an  $\epsilon 4$  allele will have higher risk of mortality and disease due to higher cholesterol levels.

In addition, the strong association observed in the African American cohort may be a result of admixture. Admixture refers to the mixed ancestry, both African and Caucasian, which is typically observed among individuals who are African American. It is hypothesized that the effect of the APOE  $\epsilon 4$  allele in African American populations may be due to its Caucasian ancestry. Evaluation of this hypothesis, as well as the potential effect of unique African variants modifying the effect of the APOE  $\epsilon 4$  allele, can be best evaluated using whole genome sequencing data in these two populations.

There are many environmental and life style differences between the Yoruba and the African Americans (Hendrie *et al.*, 2004). For example the Yoruba diet has been described as being low in fat and low calorie (Hendrie *et al.*, 2004). Probably, as a consequence, the levels of cholesterol and triglycerides are significantly lower in the Yoruba than in the African Americans (Deeg *et al.*, 2008).

The role of cholesterol in the etiology of AD, however, remains controversial (Reitz *et al.*, 2013).

In a previous study we reported very similar significant interactions between cholesterol levels, APOE  $\epsilon 4$  and AD risk for both Yoruba and African Americans (Evans *et al.*, 2000; Hall *et al.*, 2006). However, in our study increasing levels of cholesterol increased the risk for AD, but only in those participants who did not possess an  $\epsilon 4$  allele. The risk associated with  $\epsilon 4$  remained lower in Yoruba than in African Americans regardless of cholesterol levels suggesting that the  $\epsilon 4$  link to lipid metabolism maybe due to differences in genes associated with lipid metabolism rather than cholesterol levels *per se*.

It is noteworthy that the second major genetic variant affecting AD risk in African Americans is ABCA7, which mediates the biogenesis of high density lipoproteins (Reitz *et al.*, 2013). The authors conclude that, together with the confirmation of the effect of  $\epsilon 4$ , their findings suggest that lipid metabolism is a prominent pathway for Late Onset Alzheimer Disease in African Americans. The status of ABCA7 and AD risk in African populations remain untested however.

In our analysis of cognitive decline as an outcome we find a similar pattern as with incident AD, with the Indianapolis cohort showing a significant effect for the possession of both a single and double copy of an  $\epsilon 4$  allele while the Yoruba cohort showed a significant effect for the presence of an  $\epsilon 4$  allele ( $p = 0.0425$ ) but no significant effect for either homozygosity or heterozygosity.



There is some evidence that the  $\epsilon 4$  effect on cognitive decline varies according to the cognitive domain measured. Consistent with previous reports, in our study, the association with APOE $\epsilon 4$  appears to be driven primarily by the scores in the memory subdomain (Unverzagt *et al.*, 2011). Our African American findings are also similar to previous studies that included African American samples (Knopman *et al.*, 2009; Sawyer *et al.*, 2009). As far as we can determine this represents the first analysis of the effects of  $\epsilon 4$  in cognitive decline in an African population.

### Strengths

The 19 year longitudinal Indianapolis Ibadan Project is the largest and longest comparative study of dementia that includes African and African American cohorts. Results from the study represent the most comprehensive analysis of the effects of  $\epsilon 4$  on incident AD and cognitive decline currently reported with African populations.

### Weaknesses

APOE analyses were conducted in approximately half of the total sample. Participants in Ibadan who did not have APOE genotyping were significantly older while those in Indianapolis were significantly less educated than those with APOE genotyping. It is possible that the non-geno-typed samples contained more AD patients and therefore this analysis may underestimate the effects of APOE  $\epsilon 4$ .

The Yoruba sample came from a circumscribed geographical area. Caution should be used to generalize these findings to the entire Nigerian population.

The study used self or informant reports for identifying co morbidities thus raising the possibility that these were under reported particularly in the Yoruba population. These, together with the population biases described above, may account for some surprising co morbidity findings such as African Americans with incident AD being less likely to have diabetes.

No information on individual diet or medication was included in this study

The CSID is a relatively crude instrument to measure cognitive decline.

In summary, the  $\epsilon 4$  allele of APOE was strongly related to increased risk for incident AD and cognitive decline in African Americans while a weaker but significant effect for incident AD was only found for  $\epsilon 4$  homozygosity and for the presence of an  $\epsilon 4$  allele for cognitive decline in Yoruba.

### Acknowledgments

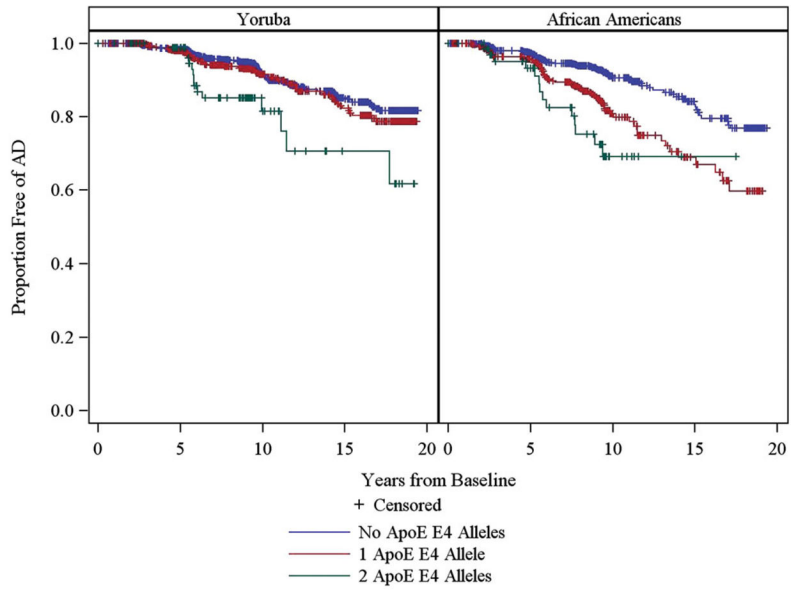
No additional acknowledgments.

### References

American Psychiatric Association. Diagnostic and Statistical Manual of Mental Disorders. 3. Washington, DC: American Psychiatric Association; 1987. revised

- American Psychiatric Association Press. The International Statistical Classification of Diseases and Related Health Problems: 1 and 2. 1992. ICD-10.
- Bell JT, et al. DNA methylation patterns associate with genetic and gene expression variation in HapMap cell lines. *Genome Biology*. 2011; 12:R10. [PubMed: 21251332]
- Chalise P, Chicken E, McGee D. Baseline age effect on parameter estimates in Cox models. *Journal of Statistical Computation and Simulation*. 2011; 82:1767–1774.
- Chen CH, et al. A comparative study to screen dementia and APOE genotypes in an ageing East African population. *Neurobiol Aging*. 2010; 31:732–740. [PubMed: 18703255]
- Chuang YF, et al. Association between APOE epsilon4 allele and vascular dementia: the Cache County study. *Dementia and Geriatric Cognitive Disorders*. 2010; 29:248–253. [PubMed: 20375505]
- Corbo RM, Scacchi R. Apolipoprotein E (APOE) allele distribution in the world. Is APOE\*4 a 'thrifty' allele? *Annals of Human Genetics*. 1999; 63:301–310. [PubMed: 10738542]
- Deeg M, et al. A comparison of cardiovascular disease risk factor biomarkers in African Americans and Yoruba Nigerians. *Ethnicity & Disease*. 2008; 18:427–433. [PubMed: 19157246]
- Degner JF, et al. DNase I sensitivity QTLs are a major determinant of human expression variation. *Nature*. 2012; 482:390–394. [PubMed: 22307276]
- Evans RM, et al. Serum cholesterol, APOE genotype, and the risk of Alzheimer's disease: a population-based study of African Americans. *Neurology*. 2000; 54:240–242. [PubMed: 10636159]
- Farrer LA, et al. Effects of age, sex, and ethnicity on the association between apolipoprotein E genotype and Alzheimer disease. A meta-analysis. APOE and Alzheimer Disease Meta Analysis Consortium. *JAMA*. 1997; 278:1349–1356. [PubMed: 9343467]
- Finch CE, Sapolsky RM. The evolution of Alzheimer disease, the reproductive schedule, and APOE isoforms. *Neurobiology of Aging*. 1999; 20:407–428. [PubMed: 10604433]
- Finch CE, Stanford CB. Meat-adaptive genes and the evolution of slower aging in humans. *Quarterly Review of Biology*. 2004; 63:301–310.
- Gureje O, et al. APOE epsilon4 is not associated with Alzheimer's disease in elderly Nigerians. *Annals of Human Genetics*. 2006; 59:182–185.
- Hall KS, Gao S, Emsley CL, Ogunniyi AO, Morgan O, Hendrie HC. Community screening interview for dementia (CSI 'D'); performance in five disparate study sites. *International Journal of Geriatric Psychiatry*. 2000; 15:521–531. [PubMed: 10861918]
- Hall K, et al. Cholesterol, APOE genotype, and Alzheimer disease: an epidemiologic study of Nigerian Yoruba. *Neurology*. 2006; 66:223–227. [PubMed: 16434658]
- Hendrie HC, et al. The CAMDEX: a standardized instrument for the diagnosis of mental disorder in the elderly: a replication with a US sample. *Journal of the American Geriatrics Society*. 1988; 36:402–408. [PubMed: 3361042]
- Hendrie HC, et al. Incidence of dementia and Alzheimer disease in 2 communities: Yoruba residing in Ibadan, Nigeria, and African Americans residing in Indianapolis, Indiana. *JAMA*. 2001; 285:739–747. [PubMed: 11176911]
- Hendrie H, et al. Alzheimer's disease, genes, and environment: the value of international studies. *Canadian Journal of Psychiatry*. 2004; 49:92–99.
- Hendrie HC, et al. The development of a semi-structured home interview (CHIF) to directly assess function in cognitively impaired elderly people in two cultures. *International Psychogeriatrics*. 2006; 18:653–666. [PubMed: 16640794]
- Hendrie H, et al. Homocysteine levels and dementia risk in Yoruba and African Americans. *International Psychogeriatrics*. 2013; 25:1859–1866. [PubMed: 23899991]
- Hixson JE, Vernier DT. Restriction isotyping of human apolipoprotein E by gene amplification and cleavage with HhaI. *Journal of Lipid Research*. 1990; 31:545–548. [PubMed: 2341813]
- Knopman DS, Mosley TH, Catellier DJ, Coker LH. Fourteen-year longitudinal study of vascular risk factors, APOE genotype, and cognition: the ARIC MRI Study. *Alzheimers Dementia*. 2009; 5:207–214.

- Kuller LH, et al. Relationship between ApoE, MRI findings, and cognitive function in the Cardiovascular Health Study. *Stroke*. 1998; 29:388–398. [PubMed: 9472879]
- Leffondre K, Touraine C, Helmer C, Joly P. Internal-censored time-to-event and competing risk with death: is the illness-death model more accurate than the Cox model? *International Journal of Epidemiology*. 2013; 42:1177–1186. [PubMed: 23900486]
- Martin GM. APOE alleles and lipophilic pathogens. *Neurobiol Aging*. 1999; 20:441–443. [PubMed: 10604437]
- McKhann G, Drachman D, Folstein M, Katzman R, Price D, Stadlan EM. Clinical diagnosis of Alzheimer's disease: report of the NINCDS-ADRDA Work Group under the auspices of Department of Health and Human Services Task Force on Alzheimer's Disease. *Neurology*. 1984; 34:939–944. [PubMed: 6610841]
- Morris JC, et al. The Consortium to Establish a Registry for Alzheimer's Disease (CERAD). Part I. Clinical and neuropsychological assessment of Alzheimer's disease. *Neurology*. 1989; 39:1159–1165. [PubMed: 2771064]
- Murrell JR, et al. Association of apolipoprotein E genotype and Alzheimer disease in African Americans. *Archives of Neurology*. 2006; 63:431–434. [PubMed: 16533971]
- Ohara T, et al. Apolipoprotein genotype for prediction of Alzheimer's disease in older Japanese: the Hisayama Study. *Journal of the American Geriatrics Society*. 2011; 59:1074–1079. [PubMed: 21649613]
- Reitz C, et al. Variants in the ATP-binding cassette transporter (ABCA7), apolipoprotein E 4, and the risk of late-onset Alzheimer disease in African Americans. *JAMA*. 2013; 309:1483–1492. [PubMed: 23571587]
- Sahota A, et al. Apolipoprotein E-associated risk for Alzheimer's disease in the African-American population is genotype dependent. *Annals of Neurology*. 1997; 42:659–661. [PubMed: 9382479]
- Sawyer K, Sachs-Ericsson N, Preacher KJ, Blazer DG. Racial differences in the influence of the APOE epsilon 4 allele on cognitive decline in a sample of community-dwelling older adults. *Gerontology*. 2009; 55:32–40. [PubMed: 18525196]
- Stewart R, Russ C, Richards M, Brayne C, Lovestone S, Mann A. Apolipoprotein E genotype, vascular risk and early cognitive impairment in an African Caribbean population. *Dementia and Geriatric Cognitive Disorders*. 2001; 12:251–256. [PubMed: 11351136]
- Tennesen JA, et al. Evolution and functional impact of rare coding variation from deep sequencing of human exomes. *Science*. 2012; 337:64–69. [PubMed: 22604720]
- Tishkoff SA, et al. The genetic risk structure and history of Africans and African Americans. *Science*. 2009; 324:1035–1044. [PubMed: 19407144]
- Unverzagt FW, et al. Incidence and risk factors for cognitive impairment no dementia and mild cognitive impairment in African Americans. *Alzheimer Disease and Associated Disorders*. 2011; 25:4–10. [PubMed: 20921881]



**Figure 1.**  
Kaplan-Meier survival estimates for time to incident AD.

**Table 1**  
Baseline characteristics of African-American and Yoruba participants with incident AD and normal cognition

VARIABLE NAME	AFRICAN AMERICANS			YORUBA			P-VALUE	P-VALUE
	NORMAL COGNITION (n = 1689)	INCIDENT AD (n = 182)	P-VALUE	NORMAL COGNITION (n = 2027)	INCIDENT AD (n = 173)	P-VALUE		
Number of APOE ε4 alleles, n (%)			<.0001			0.0537		
0	1128 (66.8%)	88 (48.4%)	.	1250 (61.7%)	95 (54.9%)	.		
1	503 (29.8%)	80 (44.0%)	.	685 (33.8%)	64 (37.0%)	.		
2	58 (3.4%)	14 (7.7%)	.	92 (4.5%)	14 (8.1%)	.		
Age at baseline, mean±sd	75.52 ± 5.85	77.47 ± 6.69	0.0002	72.99 ± 6.26	75.72 ± 8.79	<.0001		
Years of education (Indianapolis School (Ibadan) n (%))	11.02 ± 2.78	9.53 ± 3.37	<.0001	308 (15.2%)	14 (8.1%)	0.0112		
Female gender, n (%)	1132 (67.0%)	131 (72.0%)	0.1750	1307 (64.5%)	142 (82.1%)	<.0001		
From the 1992 Cohort, n (%)	520 (30.8%)	125 (68.7%)	<.0001	1109(54.7%)	138 (79.8%)	<.0001		
Angina, n (%)	193 (11.5%)	28 (15.4%)	0.1241	156 (7.7%)	12 (6.9%)	0.7180		
Anxiety, n (%)	244 (14.5%)	35 (19.3%)	0.0854	31 (1.5%)	1 (0.6%)	0.3158		
Depression, n (%)	165 (9.8%)	15 (8.3%)	0.5195	286 (14.1%)	27 (15.6%)	0.5884		
Family history of dementia, n (%)	233 (14.0%)	33 (18.2%)	0.1239	48 (2.4%)	3 (1.7%)	0.5919		
Diabetes, n (%)	467 (27.7%)	34 (18.7%)	0.0089	47 (2.3%)	2 (1.2%)	0.3199		
Head Injury, n (%)	153 (9.1%)	10 (5.5%)	0.1006	64 (3.2%)	3 (1.7%)	0.2957		
Heart Attack, n (%)	227 (13.6%)	21 (11.5%)	0.4430	292 (14.4%)	27 (15.6%)	0.6666		
Hypertension, n (%)	1220 (73.0%)	124 (68.1%)	0.1654	469 (23.2%)	33 (19.2%)	0.2283		
Parkinsons Disease, n (%)	11 (0.7%)	0 (0.0%)	0.2743	89 (4.4%)	6 (3.5%)	0.5667		
Stroke, n (%)	232 (13.8%)	18 (9.9%)	0.1505	30 (1.5%)	1 (0.6%)	0.3337		
Alcohol Use, n (%)	615 (38.5%)	49 (27.7%)	0.0049	670 (33.4%)	30 (17.6%)	<.0001		
Smoking History, n (%)	997 (59.2%)	95 (52.5%)	0.0813	629 (31.0%)	49 (28.3%)	0.4591		
Cancer, n (%)	253 (15.1%)	23 (12.6%)	0.3726	18 (0.9%)	3 (1.7%)	0.2719		
Heart Problems, n (%)	509 (30.2%)	44 (24.2%)	0.0931	383 (18.9%)	3 (19.7%)	0.8070		

**Table 2**

Results from final Cox's proportional hazards models on incident AD risk for the African American and Yoruba cohorts

	AFRICAN AMERICANS			YORUBA		
	HR	95% CI	P-VALUE	HR	95% CI	P-VALUE
Number of APOE ε4 alleles			<0.0001			0.0009
2 vs. 0	4.12	2.33–7.28	<0.0001	2.95	1.67–5.19	0.0002
1 vs. 0	2.31	1.70–3.14	<0.0001	1.21	0.88–1.67	0.2362
Age at baseline	1.13	1.11–1.16	<0.0001	1.10	1.08–1.12	<0.0001
Years of education	0.690	0.85–0.94	<0.0001	N.I.	N.I.	N.I.
Original cohort	2.55	1.79–3.61	<0.0001	N.I.	N.I.	N.I.
Female gender	N.I.	N.I.	N.I.	3.12	2.03–4.80	<0.0001
History of smoking	N.I.	N.I.	N.I.	1.60	1.10–2.31	0.0134

N.I.: not included in final model



Table 3

Results from mixed effects models on cognitive decline\* for both cohorts

	AFRICAN AMERICANS			YORUBA		
	PARAMETER ESTIMATE	STANDARD ERROR	P-VALUE	PARAMETER ESTIMATE	STANDARD ERROR	P-VALUE
Number of APOE ε4 alleles			0.3469			0.9849
2 vs. 0	-0.90	0.82	0.2727	-0.11	0.64	0.6221
1 vs. 0	-0.37	0.34	0.2739	-0.02	0.28	0.9142
Age at baseline	-0.35	0.03	<0.0001	-0.30	0.02	<0.0001
Years of education	1.01	0.05	<0.0001	N.I.	N.I.	N.I.
Original cohort	-1.42	0.32	<0.0001	N.I.	N.I.	N.I.
Years Since Baseline	-0.75	0.03	<0.0001	-0.58	0.03	<0.0001
Female gender	N.I.	N.I.	N.I.	-6.95	0.29	<0.0001
History of smoking	N.I.	N.I.	N.I.	-1.79	0.30	<0.0001
Interaction – Number of APOE ε4 alleles and Years Since Baseline			<0.0001			0.1152
2 vs. 0	-0.48	0.15	0.0009	-0.13	0.11	0.2346
1 vs. 0	-0.18	0.06	0.0007	-0.08	0.04	0.1152

N.I.: not included in final model

\* Cognitive decline was based upon cognitive scores from the Community Screening Interview for Dementia