

REVIEW

Open Access

# Blood–brain-barriers in aging and in Alzheimer’s disease

Fernanda Marques<sup>1,2</sup>, João Carlos Sousa<sup>1,2</sup>, Nuno Sousa<sup>1,2</sup> and Joana Almeida Palha<sup>1,2\*</sup>

## Abstract

The aging process correlates with a progressive failure in the normal cellular and organ functioning; these alterations are aggravated in Alzheimer’s disease (AD). In both aging and AD there is a general decrease in the capacity of the body to eliminate toxic compounds and, simultaneously, to supply the brain with relevant growth and nutritional factors. The barriers of the brain are targets of this age related dysfunction; both the endothelial cells of the blood–brain barrier and the choroid plexus epithelial cells of the blood-cerebrospinal fluid barrier decrease their secretory capacity towards the brain and their ability to remove toxic compounds from the brain. Additionally, during normal aging and in AD, the permeability of the brain barriers increase. As such, a greater contact of the brain parenchyma with the blood content alters the highly controlled neural environment, which impacts on neural function. Of interest, the brain barriers are more than mere obstacles to the passage of molecules and cells, and therefore active players in brain homeostasis, which is still to be further recognized and investigated in the context of health and disease. Herein, we provide a review on how the brain barriers change during aging and in AD and how these processes impact on brain function.

**Keywords:** Aging, Alzheimer’s disease, Blood–brain barrier, Blood-cerebrospinal fluid barrier, Cerebrospinal fluid, Choroid plexus

## Introduction

Increases in lifespan over the last decades have, unfortunately, not been matched by improvements in the mental health span. While some individuals age “healthily”, others present accelerated cognitive decline. Persons over the age of 65 have high risk of developing Alzheimer’s disease (AD), the most common type of dementia. AD affects approximately 28 million people worldwide and it is 1 in 85 persons (or 106 million people) will suffer from AD [1]. The need to counter these disorders, based on improved mechanistic understanding of their etiopathogenesis cannot, therefore, be underestimated.

The main pathological features of AD are the extracellular deposition of amyloid  $\beta$  peptide ( $A\beta$ ) into plaques and the formation of intracellular tangles composed of hyperphosphorylated Tau protein [2]. Various lifetime parameters, such as chronic stress and exposure to

inflammatory stimuli have been suggested to predispose individuals to AD, and several molecular pathways have been implied in the disease [3,4]. In this review we will focus on the involvement of the brain barriers in aging and in AD. This topic is still poorly investigated, especially in normal aging, but is of relevance given the ability of the brain barriers to maintain and regulate the environment for the normal neuronal activity. Thus, alterations in the barriers’ morphology, secretome and functioning can compromise central nervous system (CNS) homeostasis. A key message from this review is that the brain barriers are not mere obstacles to the passage of molecules, cells and drugs into and out of the brain (which by itself is of relevance for clearance of  $A\beta$  peptides); in fact, they actively contribute to brain homeostasis and display specific responses to events that occur in the periphery and in the brain parenchyma, which should be taken into consideration in understanding diseases of the CNS.

## The barriers of the brain

CNS homeostasis is essential for the proper functioning of brain cells. The blood–brain barriers participate in CNS

\* Correspondence: japalha@ecea.uminho.pt

<sup>1</sup>Life and Health Sciences Research Institute (ICVS), School of Health Sciences, University of Minho, Campus Gualtar, Braga 4710-057, Portugal

<sup>2</sup>ICVS/3B’s - PT Government Associate Laboratory, Braga/Guimaraes, Portugal

homeostasis by preventing the brain from being exposed to the constant oscillations in the concentration of blood constituents and by transporting nutrients and products from brain metabolism in and out of the brain, respectively. Two main barriers separate the CNS from the periphery: the blood–brain barrier (BBB) and the blood-cerebrospinal fluid barrier (BCSFB) [5]. While the BBB has been well recognized for long; the BCSFB is more rarely mentioned, which is to regret when considering its functions, which include producing most of the cerebrospinal fluid (CSF).

The existence of the brain barriers is in part responsible for the initial concept that the brain is an immune-privileged site, with restricted passage of immune cells into the brain. In fact, even though in a healthy person under physiological conditions, immune cell migration across the brain barriers is low, some migration exists and is required for the immune surveillance of the CNS [6,7]. However, during normal aging and in several diseases of the CNS, such as multiple sclerosis and AD, changes in blood composition, brain inflammation and the facilitated entrance of immune cells through the brain barriers can potentially cause neuronal damage and cognitive dysfunction [8-10].

While the brain barriers protect the neural milieu from drastic concentration changes in blood molecules such as nutrients and ions, the brain still senses changes in specific blood constituents to rapidly respond accordingly. Specific brain regions, called circumventricular organs (area postrema, median eminence, pineal gland, posterior pituitary, subfornical organ, subcommissural organ, and the vascular organ of the lamina terminalis) are deprived of BBB and, therefore, continuously monitor the blood composition. In these areas the protection of the brain parenchyma is ensured by tanycytes [11].

### The blood–brain barrier

The BBB is formed by tight junctions present between the endothelial cells of the capillaries that perfuse the brain parenchyma. On a larger organizational level, the basal lamina, astrocytic end-feet and pericytes that surround the central BBB core, altogether, constitute what is designated as the neurovascular unit (Figure 1A). The total length of capillaries in the human brain is of approximately 600 Km, with a capillary surface area of about 20 m<sup>2</sup> [12]. In fact, almost every neuron is perfused by its own capillary, which highlights the dimension of this interface between the blood and the brain parenchyma.

Except for small lipophilic molecules such as O<sub>2</sub> and CO<sub>2</sub>, which diffuse freely across endothelial cells along their concentration gradient, access through the brain barriers of blood-borne molecules requires the presence of specific transporter or receptor systems. Nutrients like glucose and amino acids enter the brain through specific transporters, while molecules such as insulin, leptin and transferrin are transported by receptor-mediated

endocytosis [13,14] (Figure 1B). Conversely, similar mechanisms constitute a way out of the brain for molecules produced by brain cells metabolism; both through passive diffusion and via transporters and receptors located on the “brain side” of the endothelial cell, such as for glutamine and A $\beta$  peptides [15].

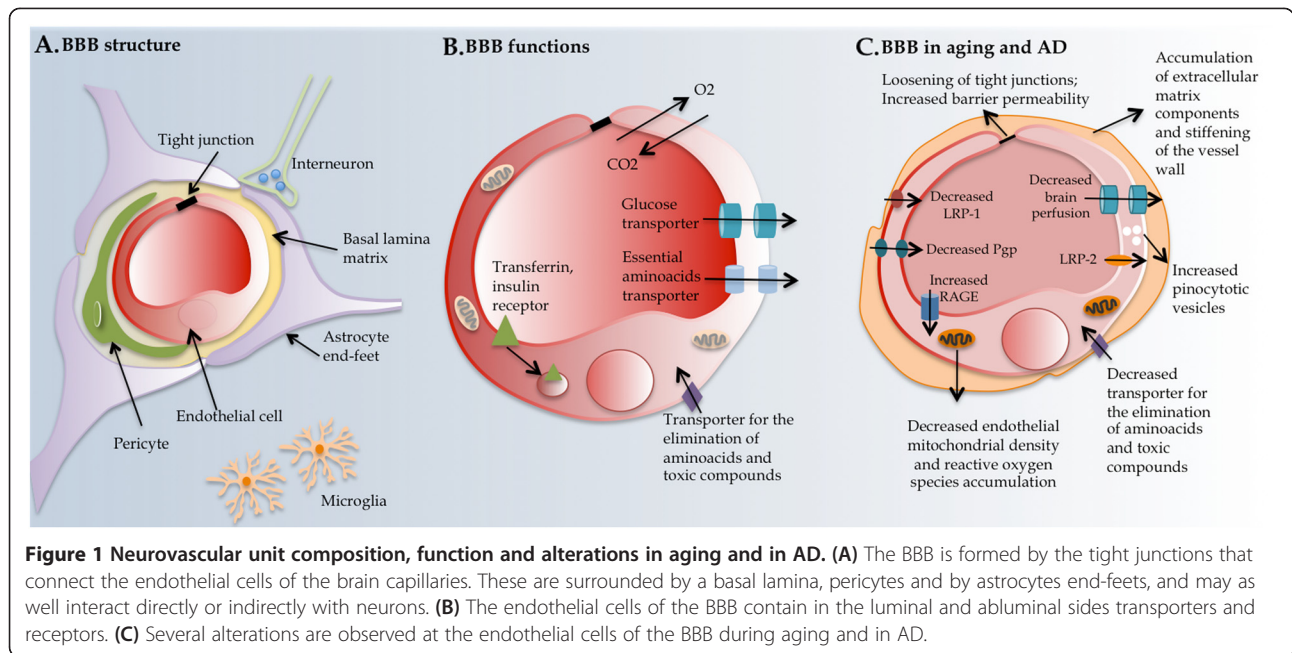
### Blood-cerebrospinal fluid barrier

The BCSFB is formed by the choroid plexus (CP) epithelial cells. The CP is phylogenetically and ontogenetically conserved. The CP develops early during embryogenesis and already constitutes a functional barrier within the first weeks of gestation [16,17]. Before this barrier is formed, the neuroependymal cells lining the ventricular wall are connected by strap junctions, halting the passage of large molecules into the brain parenchyma [17]. The CP is positioned within the ventricles of the brain: one in each lateral, one in the third and one in the fourth. Grossly, the CP is a lobulated structure formed by a unique and continuous line of epithelial cells originating from the ependymal wall of the ventricles, which floats in the CSF space. These epithelial cells are bound to each other by tight junctions and rest on a basal lamina and on a central core formed by connective and highly vascularized tissue (Figure 2A). The apical side of the epithelial cells faces the CSF and contains numerous villousities, while the basolateral side faces the blood, lying in the stroma in contact with several capillaries. Of notice, the capillaries that irrigate the CP are fenestrated, i. e. at the CP there is no BBB. In addition to the fenestrated capillaries, dendritic cells, fibroblasts and macrophages populate the central core of the CP stroma. Although the passage of molecules and cells is possible in the vascularized stroma, these do not reach the CSF through paracellular transport due to the tight junctions between CP epithelial cells. Ultrastructurally, the epithelial cell contains numerous mitochondria, Golgi apparatus, smooth endoplasmic reticulum and lysosome-like vesicles, which demonstrates that it is a structure with great synthetic capacity. The main CP function is the production of CSF [18] (Figure 2B). The CSF is a clear, slightly viscous liquid with few cells and a protein concentration about 10 times lower than that of the blood [19]. An adult human contains approximately 150 ml of CSF filling the ventricles, the sub-arachnoid space and the spinal cord, and these are renewed 3–4 times daily, testifying to the great secretory capacity of the CP epithelium. Drainage of CSF occurs at the arachnoid villus in the venous sinus.

By influencing the CSF composition, which ultimately impacts on the brain parenchyma, the CP may interfere with brain homeostasis in health and in disease.

### The brain barriers in aging and in Alzheimer’s disease

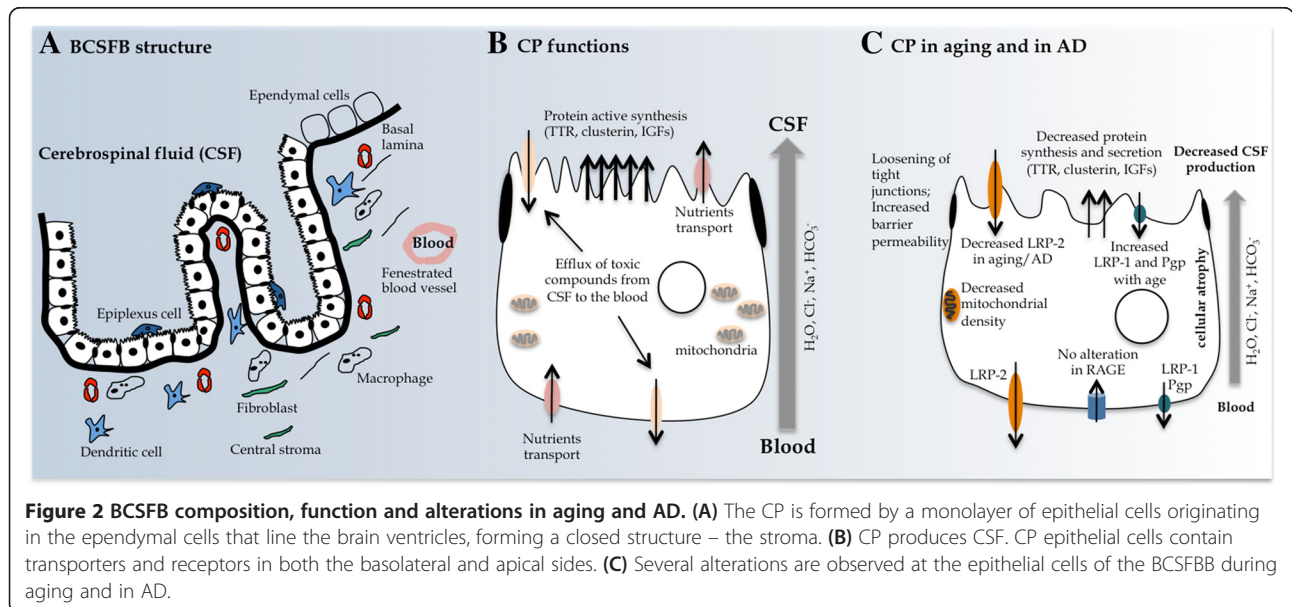
The brain has two fluid environments: the brain interstitial fluid, which surrounds the neurons and glia, and the CSF.



Interaction between the periphery and the brain parenchyma has, therefore, to occur through the CSF and/or through the neurovascular unit. Both the BBB and the BCSFB contain transporters and receptors in the basolateral and apical sides, and therefore are able to transport molecules into and out of the brain, and to convey receptor-mediated signals, similarly in both directions. What is striking and still far from being fully understood is how the brain barriers themselves respond to stimuli, as recently shown by alterations in the CP transcriptome in response to peripheral inflammatory stimuli [20,21], and in the BBB transcriptome similarly in response to

systemic inflammation and to infection [22]. This brings the brain barriers to a novel level of complexity since changes in their functions may be critical to control/prevent/treat diseases of the CNS.

During aging and in AD several alterations are observed in the cellular elements of the neurovascular unit and in the CP epithelia. At the neurovascular unit these consist of focal necrosis of the cerebral endothelium, accumulation of extracellular matrix components in the vascular basement membrane, decreased endothelial mitochondrial density, increased pinocytotic vesicles, loosening of tight junctions, changes in the astrocytic endfeet and stiffening of the vessel



wall (with concomitant loss of elasticity that affects brain perfusion) [23,24] (Figure 1C). Furthermore, normal aging and AD are accompanied by a significant decrease in microvessel density [25]. Sensitive neuroimaging methods confirm aging-related regression in global and regional measures of cerebral blood flow (~4 mL/min/year), cerebral metabolic rate for oxygen, glucose oxidation and cerebral blood volume [26]. Interestingly, deficiency of pericytes (one of the elements of the neurovascular unit) has been shown to compromise the integrity of the BBB and lead to brain hypoperfusion resulting in secondary neurodegenerative changes [27,28]. Similarly, the aged human CP exhibits cellular atrophy, decreased CSF production, enzymatic and metabolic activities, and impaired capacity for the efflux and clearance of molecules [29-31] (Figure 2C).

The aged CP epithelial cell cytoplasm becomes rich with Biondi ring tangles and lipofuscin deposits, which is also observed in the CP of AD patients [32]. Additionally, irregular and flattened basement membrane thickening is also observed in the aged CP [29]. The stroma also thickens and contains collagen fibers, hyaline bodies and calcifications while the infiltrating arteries become thicker and fragmented [29,30].

With respect to CSF dynamics, studies in humans and in rodents [33,34] revealed decreased CSF production and turnover in the aged brain. Interestingly, A $\beta$ 1-40 and A $\beta$ 1-42 concentrations in the cortex and hippocampus were also reported to increase from 3 to 30 months [33], suggesting that the decrease in the CSF turnover and the continuous A $\beta$  brain accumulation are contributing to AD pathology [33,35]. A general feature of aging that is accelerated in AD is an increase in the barriers permeability, as revealed by higher protein leakage from the blood into the CSF [31,36] (Figures 1 and 2C).

Recognition that the barriers' properties and metabolism change with age and are subject of alterations in response to specific stimuli, make them physiologically interesting in the context of brain function in "healthy" aging and in disease. We will next briefly specify two examples in which changes at the brain barriers are of relevance for aging and AD: i) the transport of the A $\beta$  peptide since accumulation of A $\beta$  may result from increased A $\beta$  production or decreased A $\beta$  efflux out of the brain [30,37], and ii) the response of the barriers to inflammation, not only given the inflammatory component that is present in the AD brain, but also because peripheral inflammatory stimuli have been shown to alter the barriers homeostasis with respect to processes such as iron regulation, which impacts in AD [38].

### **A $\beta$ transport through the brain barriers in Alzheimer's disease**

One of the pathological hallmarks of AD is the increased production and accumulation of A $\beta$  peptides in the brain.

These peptides result from the sequential cleavage of the transmembrane amyloid precursor protein (APP). Due to an unidentified combination of events, A $\beta$  monomers can aggregate into oligomers, and then deposit in the form of extracellular amyloid plaques in different regions of the brain [39,40]. The accumulation of these peptides can result both from the increased production but also from a decrease in their excretion through the brain barriers [41]. Thus, excretion of A $\beta$  out of the brain represents a relevant mechanism of the disease and a therapeutic target. Various transporter systems seem to operate at the brain barriers. Although not specific for A $\beta$ , these are involved in receptor-mediated flux of A $\beta$ : the low-density lipoprotein receptor-related protein (LRP), the receptor for advanced glycation end products (RAGE), the receptor glycoprotein330 (gp330)/megalin (LRP-2)-mediated transcytosis, and the ATP-binding cassette, sub-family B (MDR/TAP), member 1 (ABCB1 also known as P-glycoprotein or Pgp) [15,23,42]. While LRP and ABCB1 mediate the efflux of A $\beta$  from the brain to the periphery, RAGE has been implicated in the A $\beta$  influx to the brain from the periphery [15,37]. The expression of both types of receptors at the BBB is altered with age; the expression of the A $\beta$  efflux transporters is decreased while that of the A $\beta$  influx transporter is increased, adding to the amyloid burden in the brain [15,43]. LRP-1 and ABCB1 staining of microvessels revealed that there is an age-dependent loss of capillary LRP-1 and ABCB1 and that the expression of LRP-1 correlated negatively with the expression of RAGE [43], which seems to progressively contribute to A $\beta$  accumulation in aging (Figure 1C). In addition, single-nucleotide polymorphisms in the ABCB1 gene found in AD patients may be related to changes in ABCB1 function at the BBB. As such, genetic variations in ABCB1 might contribute to the progression of A $\beta$  deposition in the brain [44,45].

As for the BCSFB, LRP-2 has been found to decrease with age, which supports decreased clearance of A $\beta$  [46]. Of interest, a recent study in old rats confirmed reduced LRP-2 but showed an increase in the transcription of the A $\beta$  efflux transporters LRP-1 and ABCB1 and no changes in RAGE expression [47] (Figure 2C). These observations in efflux transport regulation are on the opposite direction from those reported in the BBB. Therefore, it is the overall balance of these transporters at both barriers that finally determines the net flow of A $\beta$  in aging and in AD.

Still related with A $\beta$  removal from the brain, three CSF circulating proteins deserve specific consideration: transthyretin (TTR), clusterin (or apolipoprotein J), and insulin-like growth factor 1 (IGF1).

TTR [48] is a 55-kDa tetrameric protein synthesized mainly by the liver and by the CP [49,50] from where it is secreted into the blood and the CSF, respectively. TTR synthesis represents 20% of the total protein synthesized by the CP. TTR is a plasma and CSF carrier for thyroxine



and retinol (vitamin A) [when bound to the retinol-binding protein (RBP)] [51]. Although TTR has been initially proposed to be essential to mediate thyroid hormone and retinol transfer into the tissues, particularly into the brain and across the BCSFB, studies with a TTR-null mouse strain showed that TTR is neither necessary for thyroid hormones entry into and distribution within the brain and other tissues, nor for the maintenance of a euthyroid status [51,52] or for retinol delivery to the tissues [53]. However, both TTR ligands may, themselves, be of relevance in aging and in AD, as exemplified by reports on the ability of retinoids to diminish amyloid aggregation and to improve cognition [54,55]. As for A $\beta$ , TTR is able to bind it both *in vitro* and *in vivo* [56] and, by sequestering A $\beta$  in the CSF, TTR has been suggested to prevent amyloid plaques formation [57-59] and to mediate CP clearance of A $\beta$ . Studies in which TTR-null mice were crossed with animal models of AD have led to contradictory results on whether, *in vivo*, the absence of TTR ameliorates [60,61] or accelerates [62] the AD-like phenotype. Interestingly, the absence of TTR, *per se*, has been shown to accelerate the cognitive decline associated with aging [63]. Studies in humans found decreased TTR levels in the CSF of AD patients [64], which may result from the decreased CP secretory activity described to occur with aging [26]. Furthermore, TTR is also decreased in the blood of individuals with mild cognitive impairment and with AD [65]. These observations suggested that mutated forms of TTR, with decreased affinity to A $\beta$ , could be associated with AD; however, no mutations in TTR were found associated with the disease [66].

Clusterin is another blood and CSF carrier of soluble A $\beta$  [67] synthesized by the CP [68]. Genome-wide association studies found clusterin linked to AD [69] and some studies suggested that its circulating increased levels could be part of a panel of markers of the disease [70]; the latter is however controversial as other studies showed no association [71]. Clusterin levels in AD brain are higher than those in control subjects: in a recent immunohistochemistry characterization, a unique and specific association between clusterin and A $\beta$ 1-40 (but not with A $\beta$ 1-42) plaques was observed in the cerebral cortex and in the cerebrovasculature of AD subjects [72]. As such, clusterin-bound A $\beta$ 1-40 seems prone to deposit in the AD brain. On the contrary, binding to clusterin may facilitate its transport across the BBB and the BCSFB through LRP-2 [68,73]. Therefore, the factors that determine whether clusterin is protective or detrimental in AD remain to be clarified.

IGF-1 is among the proteins synthesized and secreted by the CP described as neuroprotective in the context of AD, given its ability to participate in the clearance of A $\beta$  out of the brain. In accordance, treatment of mice over-expressing mutant APP/ presenilin-1 (APP/PS1) with

IGF-1 reduced brain A $\beta$  burden [74], an effect suggested to be mediated by interaction with the LRP2 A $\beta$  clearance pathway [75], but also related to an increase in the concentration of other A $\beta$  carrier proteins (including TTR and clusterin). As a promiscuous receptor, LRP-2 is also able to transcytose insulin and IGF-1 [76,77]. Therefore, IGF-1 directly produced by the CP or originating from the blood may enhance the transport of A $\beta$  out of the brain [74,77]. Since levels of APP are not modified after IGF-1 therapy, and *in vitro* data indicate that IGF-1 increases the transport of A $\beta$ /carrier protein complexes through the BCSFB, it seems that IGF-1 favors elimination of A $\beta$  from the brain, supporting a therapeutic use of this growth factor in AD [77].

#### **Blood-brain barriers and inflammation: impact on aging and Alzheimer's disease**

In a healthy person, immune cell migration through the brain barriers is low. However, as it happens in neuro-inflammatory diseases, an increased number of immune cells reach the CNS during aging and in AD [78,79]. Both aging and AD are associated with altered immune response, namely with an increase in the production of inflammatory mediators.

Two levels of discussion seem to be relevant with respect to AD: the inflammatory response that is present in the vicinity of the amyloid plaques and the one that occurs at the level of the brain barriers, especially at the BBB, since considerable evidence implicates vascular inflammation in aging and in AD. Although cerebral vascular endothelial cell dysfunction and leukocyte transmigration across the BBB are described as early events in the development of AD, it is difficult to delineate whether they represent a cause or a consequence of the disease; but they certainly contribute for the perpetuation of the diseased brain [9,10].

In what concerns AD and inflammation, it is known that A $\beta$  enhances microglia and macrophage activation and induces secretion of proinflammatory cytokines and chemokines [80,81]. Recent neuropathological studies showed a close relationship between fibrillar A $\beta$  deposits, inflammation and neurodegeneration in relatively early stages of AD [82]. With respect to blood vessels and inflammation in AD, A $\beta$  appears directly involved in the degeneration of both the larger perforating arterial vessels and in the cerebral capillaries that constitute the BBB. The cerebrovascular pathology in AD also encompasses macro- and micro-infarctions, hemorrhages, lacunas, and ischemic white-matter changes [83,84]. Additionally, immunofluorescent analysis of the cerebrovasculature in AD mouse models demonstrates significant increases in thrombin, hypoxia-inducible factor 1 $\alpha$ , interleukin-6 (IL-6), monocyte chemoattractant protein-1 (MCP-1), matrix metalloproteinases and reactive oxygen species [85]. Additionally, isolated brain microvessels obtained from AD patients

present high levels of both cell-associated and soluble cytokines and chemokines including interleukin-1 beta, IL-6, interleukin-8, tumor necrosis factor  $\alpha$ , transforming growth factor-beta and MCP-1, when compared to age-matched non-AD controls [86-88]. Interestingly, the protective effect of serum IGF-1 in the regulation of brain A $\beta$  levels is antagonized by tumor necrosis factor- $\alpha$ , a pro-inflammatory cytokine putatively involved in dementia and aging [74].

Peripheral inflammatory conditions may also trigger the barriers and modulate their response in aging and in CNS diseases. Of interest, whether sustained or repeated exposure to inflammation increases susceptibility to diseases of the CNS is still to be determined. Accordingly, an increasing body of evidence supports the relevance of brain barriers-specific responses to inflammation. While single acute exposure to peripheral lipopolysaccharide (LPS) results in a rapid and transient response of the CP transcriptome [20], continuation of the same stimuli in a repeated chronic mode results in a more attenuated CP response [21]. Similarly, the endothelial cells of the BBB have both constitutive and induced expression of receptors for different proinflammatory ligands that have the ability to stimulate various signaling pathways that are equally responding to peripheral LPS in the CP [21,22]. Of notice, when LPS is administered to the Tg2576 APP mouse model of AD, an increased level of brain IL-6 is observed. Moreover, the permeability of the BBB is increased suggesting vulnerability of the BBB to inflammation in this animal model of AD [89]. Interestingly, however, is the finding that intracranial administration of LPS to promote neuroinflammation results in a reduction in A $\beta$  burden due to microglial activation [90].

When analyzing the barriers response to LPS/peripheral inflammation, one of the genes whose expression was found altered in the CP and in the BBB is that encoding for lipocalin 2 (LCN2) [91], an acute phase response protein that binds iron-loaded bacteria siderophores [92,93]. This initial finding led to a detailed analysis of iron homeostasis in the CP, which revealed that the CP is able to regulate iron homeostasis in the brain, a novel concept of regional iron homeostasis [38]. Iron is a mediator of oxidative stress and accumulates in the AD brain. Of notice, the APP gene has an iron-response element in its 5' untranslated region [94] and was shown to have iron-export ferroxidase activity [95]. Also recently, iron was shown to induce A $\beta$  aggregation since the presence of Fe<sup>3+</sup> during the A $\beta$  aggregation process blocks the fusion of fibrils into the less toxic amyloid deposits and favors the stabilization of more toxic intermediate forms [96]. Iron access to the brain occurs by transferrin-mediated endocytosis both at the BBB and at the BCSFB. It is therefore likely that changes in brain barrier homeostasis, either with respect to transport system or through altered

transcriptome may predispose the brain to increased iron-mediated oxidative stress. Of interest, decreased levels of CSF LCN2 were found in individuals with mild cognitive impairment [97,98], and mice lacking LCN2 presented cognitive impairment [99]. Furthermore LCN2 was shown to enhance the toxicity of glutamate and A $\beta$  [98] and to regulate neuronal morphology and excitability in the hippocampus and in the amygdala upon acute stress [100,101], which could have impact on the neuronal dysfunction that is observed during aging and in response to AD.

## Conclusions

Here we highlighted that the communication between the periphery and the brain, through the brain barriers, is compromised in aging and in AD. Not only alterations in the brain barrier transport mechanisms may influence clearance of A $\beta$  out of the brain, but also homeostatic mechanisms present at the brain barriers, such as their secretome and receptor-mediated signaling, can participate in the neuroinflammation observed in AD. While the literature is revealing that the barriers are active participants in brain homeostasis, additional studies are still required to fully understand on how the barriers function is altered in aging and contribute to neurodegenerative diseases such as AD.

## Abbreviations

A $\beta$ : Amyloid beta; ABCB1: ATP-binding cassette sub-family B (MDR/TAP), member 1; AD: Alzheimer's disease; APP: Amyloid precursor protein; APP-Tg: APP transgenic mice; BBB: Blood brain barrier; BCSFB: Blood cerebrospinal fluid barrier; CNS: Central nervous system; CP: Choroid plexus; CSF: Cerebrospinal fluid; IL-6: interleukin-6; IGF-1: Insulin growth factor 1; LCN2: Lipocalin 2; LPS: Lipopolysaccharide; LRP: Lipoprotein receptor-related protein; MCP-1: Monocyte chemoattractant protein-1; Pgp: P-glycoprotein; RAGE: Receptor for advanced glycation end products; gp330: Receptor glycoprotein330; sA $\beta$ 1-40: Soluble A $\beta$ 1-40; TTR: Transthyretin.

## Competing interests

The authors declare that they have no competing interests.

## Authors' contributions

JAP coordinated the work and contributed to draft the manuscript together with FM, JCS and NS. All authors read and approved the final manuscript.

## Authors' information

Fernanda Marques, Nuno Sousa and Joana Almeida Palha: Participate in EURON - European Graduate School of Neuroscience.

## Acknowledgements

We are grateful to Dr. Ioannis Sotiropoulos and Dr. Tiago Gil Oliveira for the suggestions.

Received: 30 June 2013 Accepted: 23 September 2013

Published: 22 October 2013

## References

1. Brookmeyer R, Johnson E, Ziegler-Graham K, Arrighi HM: **Forecasting the global burden of Alzheimer's disease.** *Alzheimers Dement* 2007, **3**:186-191.
2. Selkoe DJ: **Alzheimer's disease: genes, proteins, and therapy.** *Physiol Rev* 2001, **81**:741-766.
3. Sotiropoulos I, Catania C, Pinto LG, Silva R, Pollerberg GE, Takashima A, Sousa N, Almeida OF: **Stress acts cumulatively to precipitate Alzheimer's disease-like tau pathology and cognitive deficits.** *J Neurosci* 2011, **31**:7840-7847.

4. Michaud M, Balarly L, Moulis G, Gaudin C, Peyrot C, Vellas B, Cesari M, Nourhashemi F: **Proinflammatory Cytokines, Aging, and Age-Related Diseases.** *J Am Med Dir Assoc* 2013, **51525-8610**(13):00280–00286.
5. Abbott NJ, Patabendige AA, Dolman DE, Yusof SR, Begley DJ: **Structure and function of the blood–brain barrier.** *Neurobiol Dis* 2010, **37**:13–25.
6. Engelhardt B, Coisne C: **Fluids and barriers of the CNS establish immune privilege by confining immune surveillance to a two-walled castle moat surrounding the CNS castle.** *Fluids Barriers CNS* 2011, **8**:4.
7. Greenwood J, Heasman SJ, Alvarez JI, Prat A, Lyck R, Engelhardt B: **Review: leucocyte-endothelial cell crosstalk at the blood–brain barrier: a prerequisite for successful immune cell entry to the brain.** *Neuropathol Appl Neurobiol* 2011, **37**:24–39.
8. Villeda SA, Luo J, Mosher KI, Zou B, Britschgi M, Bieri G, Stan TM, Fainberg N, Ding Z, Eggel A, et al: **The ageing systemic milieu negatively regulates neurogenesis and cognitive function.** *Nature* 2011, **477**:90–94.
9. Man SM, Ma YR, Shang DS, Zhao WD, Li B, Guo DW, Fang WG, Zhu L, Chen YH: **Peripheral T cells overexpress MIP-1alpha to enhance its transendothelial migration in Alzheimer's disease.** *Neurobiol Aging* 2007, **28**:485–496.
10. Liu YJ, Guo DW, Tian L, Shang DS, Zhao WD, Li B, Fang WG, Zhu L, Chen YH: **Peripheral T cells derived from Alzheimer's disease patients overexpress CXCR2 contributing to its transendothelial migration, which is microglial TNF-alpha-dependent.** *Neurobiol Aging* 2010, **31**:175–188.
11. Langlet F, Mullier A, Bouret SG, Prevot V, Dehouck B: **Tanycyte-like cells form a blood-cerebrospinal fluid barrier in the circumventricular organs of the mouse brain.** *J Comp Neurol* 2013, **521**:3389–3405.
12. Begley DJ, Brightman MW: **Structural and functional aspects of the blood–brain barrier.** *Prog Drug Res* 2003, **61**:39–78.
13. Pardridge WM, Eisenberg J, Yang J: **Human blood–brain barrier insulin receptor.** *J Neurochem* 1985, **44**:1771–1778.
14. Zhang Y, Pardridge WM: **Rapid transferrin efflux from brain to blood across the blood–brain barrier.** *J Neurochem* 2001, **76**:1597–1600.
15. Zlokovic BV: **The blood–brain barrier in health and chronic neurodegenerative disorders.** *Neuron* 2008, **57**:178–201.
16. Dziegielewska KM, Ek J, Habgood MD, Saunders NR: **Development of the choroid plexus.** *Microsc Res Tech* 2001, **52**:5–20.
17. Saunders NR, Daneman R, Dziegielewska KM, Liddelow SA: **Transporters of the blood–brain and blood-CSF interfaces in development and in the adult.** *Mol Aspects Med* 2013, **34**:742–752.
18. Speake T, Whitwell C, Kajita H, Majid A, Brown PD: **Mechanisms of CSF secretion by the choroid plexus.** *Microsc Res Tech* 2001, **52**:49–59.
19. Segal MB: **Transport of nutrients across the choroid plexus.** *Microsc Res Tech* 2001, **52**:38–48.
20. Marques F, Sousa JC, Coppola G, Falcao AM, Rodrigues AJ, Geschwind DH, Sousa N, Correia-Neves M, Palha JA: **Kinetic profile of the transcriptome changes induced in the choroid plexus by peripheral inflammation.** *J Cereb Blood Flow Metab* 2009, **29**:921–932.
21. Marques F, Sousa JC, Coppola G, Geschwind DH, Sousa N, Palha JA, Correia-Neves M: **The choroid plexus response to a repeated peripheral inflammatory stimulus.** *BMC Neurosci* 2009, **10**:135.
22. Rivest S, Lacroix S, Vallieres L, Nadeau S, Zhang J, Laflamme N: **How the blood talks to the brain parenchyma and the paraventricular nucleus of the hypothalamus during systemic inflammatory and infectious stimuli.** *Proc Soc Exp Biol Med* 2000, **223**:22–38.
23. Sagare AP, Bell RD, Zlokovic BV: **Neurovascular dysfunction and faulty amyloid beta-peptide clearance in Alzheimer disease.** *Cold Spring Harb Perspect Med* 2012, **2**:a011452.
24. Bell RD, Zlokovic BV: **Neurovascular mechanisms and blood–brain barrier disorder in Alzheimer's disease.** *Acta Neuropathol* 2009, **118**:103–113.
25. Brown WR, Thore CR: **Review: cerebral microvascular pathology in ageing and neurodegeneration.** *Neuropathol Appl Neurobiol* 2011, **37**:56–74.
26. Stoquart-Elsankari S, Baledent O, Gondry-Jouet C, Makki M, Godefroy O, Meyer ME: **Aging effects on cerebral blood and cerebrospinal fluid flows.** *J Cereb Blood Flow Metab* 2007, **27**:1563–1572.
27. Bell RD, Winkler EA, Sagare AP, Singh I, LaRue B, Deane R, Zlokovic BV: **Pericytes control key neurovascular functions and neuronal phenotype in the adult brain and during brain aging.** *Neuron* 2010, **68**:409–427.
28. Winkler EA, Bell RD, Zlokovic BV: **Central nervous system pericytes in health and disease.** *Nat Neurosci* 2011, **14**:1398–1405.
29. Emerich DF, Skinner SJ, Borlongan CV, Vasconcellos AV, Thanos CG: **The choroid plexus in the rise, fall and repair of the brain.** *Bioessays* 2005, **27**:262–274.
30. Serot JM, Bene MC, Faure GC: **Choroid plexus, aging of the brain, and Alzheimer's disease.** *Front Biosci* 2003, **8**:s515–s521.
31. Preston JE: **Ageing choroid plexus-cerebrospinal fluid system.** *Microsc Res Tech* 2001, **52**:31–37.
32. Wen GY, Wisniewski HM, Kascsak RJ: **Biondi ring tangles in the choroid plexus of Alzheimer's disease and normal aging brains: a quantitative study.** *Brain Res* 1999, **832**:40–46.
33. Chiu C, Miller MC, Caralopoulos IN, Worden MS, Brinker T, Gordon ZN, Johanson CE, Silverberg GD: **Temporal course of cerebrospinal fluid dynamics and amyloid accumulation in the aging rat brain from three to thirty months.** *Fluids Barriers CNS* 2012, **9**:3.
34. May C, Kaye JA, Atack JR, Schapiro MB, Friedland RP, Rapoport SI: **Cerebrospinal fluid production is reduced in healthy aging.** *Neurology* 1990, **40**:500–503.
35. Serot JM, Zmudka J, Jouanny P: **A possible role for CSF turnover and choroid plexus in the pathogenesis of late onset Alzheimer's disease.** *J Alzheimers Dis* 2012, **30**:17–26.
36. Farrall AJ, Wardlaw JM: **Blood–brain barrier: ageing and microvascular disease—systematic review and meta-analysis.** *Neurobiol Aging* 2009, **30**:337–352.
37. Zlokovic BV: **Clearing amyloid through the blood–brain barrier.** *J Neurochem* 2004, **89**:807–811.
38. Marques F, Falcao AM, Sousa JC, Coppola G, Geschwind D, Sousa N, Correia-Neves M, Palha JA: **Altered iron metabolism is part of the choroid plexus response to peripheral inflammation.** *Endocrinology* 2009, **150**:2822–2828.
39. Walsh DM, Selkoe DJ: **A beta oligomers - a decade of discovery.** *J Neurochem* 2007, **101**:1172–1184.
40. Benilova I, Karran E, De Strooper B: **The toxic Abeta oligomer and Alzheimer's disease: an emperor in need of clothes.** *Nat Neurosci* 2012, **15**:349–357.
41. Zlokovic BV, Yamada S, Holtzman D, Ghiso J, Frangione B: **Clearance of amyloid beta-peptide from brain: transport or metabolism?** *Nat Med* 2000, **6**:718.
42. Deane R, Singh I, Sagare AP, Bell RD, Ross NT, LaRue B, Love R, Perry S, Paquette N, Deane RJ, et al: **A multimodal RAGE-specific inhibitor reduces amyloid beta-mediated brain disorder in a mouse model of Alzheimer disease.** *J Clin Invest* 2012, **122**:1377–1392.
43. Silverberg GD, Messier AA, Miller MC, Machan JT, Majmudar SS, Stopa EG, Donahue JE, Johanson CE: **Amyloid efflux transporter expression at the blood–brain barrier declines in normal aging.** *J Neuropathol Exp Neurol* 2010, **69**:1034–1043.
44. van Assema DM, Lubberink M, Boellaard R, Schuit RC, Windhorst AD, Scheltens P, Lammertsma AA, van Berckel BN: **P-glycoprotein function at the blood–brain barrier: effects of age and gender.** *Mol Imaging Biol* 2012, **14**:771–776.
45. van Assema DM, Lubberink M, Rizzu P, van Swieten JC, Schuit RC, Eriksson J, Scheltens P, Koepp M, Lammertsma AA, van Berckel BN: **Blood–brain barrier P-glycoprotein function in healthy subjects and Alzheimer's disease patients: effect of polymorphisms in the ABCB1 gene.** *EJNMMI Res* 2012, **2**:57.
46. Carro E, Spuch C, Trejo JL, Antequera D, Torres-Aleman I: **Choroid plexus megalin is involved in neuroprotection by serum insulin-like growth factor I.** *J Neurosci* 2005, **25**:10884–10893.
47. Pascale CL, Miller MC, Chiu C, Boylan M, Caralopoulos IN, Gonzalez L, Johanson CE, Silverberg GD: **Amyloid-beta transporter expression at the blood-CSF barrier is age-dependent.** *Fluids Barriers CNS* 2011, **8**:21.
48. Ingbar SH: **Pre-albumin: a thyroxinebinding protein of human plasma.** *Endocrinology* 1958, **63**:256–259.
49. Dickson PW, Aldred AR, Marley PD, Bannister D, Schreiber G: **Rat choroid plexus specializes in the synthesis and the secretion of transthyretin (prealbumin). Regulation of transthyretin synthesis in choroid plexus is independent from that in liver.** *J Biol Chem* 1986, **261**:3475–3478.
50. Sousa JC, Cardoso I, Marques F, Saraiva MJ, Palha JA: **Transthyretin and Alzheimer's disease: where in the brain?** *Neurobiol Aging* 2007, **28**:713–718.
51. Palha JA: **Transthyretin as a thyroid hormone carrier: function revisited.** *Clin Chem Lab Med* 2002, **40**:1292–1300.
52. Palha JA, Hays MT, Morreale de Escobar G, Episkopou V, Gottesman ME, Saraiva MJ: **Transthyretin is not essential for thyroxine to reach the brain and other tissues in transthyretin-null mice.** *Am J Physiol* 1997, **272**:E485–E493.



53. Wei S, Episkopou V, Piantadosi R, Maeda S, Shimada K, Gottesman ME, Blaner WS: **Studies on the metabolism of retinol and retinol-binding protein in transthyretin-deficient mice produced by homologous recombination.** *J Biol Chem* 1995, **270**:866–870.
54. Ono K, Yoshiike Y, Takashima A, Hasegawa K, Naiki H, Yamada M: **Vitamin A exhibits potent antiamyloidogenic and fibril-destabilizing effects in vitro.** *Exp Neurol* 2004, **189**:380–392.
55. Takasaki J, Ono K, Yoshiike Y, Hirohata M, Ikeda T, Morinaga A, Takashima A, Yamada M: **Vitamin A has anti-oligomerization effects on amyloid-beta in vitro.** *J Alzheimers Dis* 2011, **27**:271–280.
56. Schwarzman AL, Gregori L, Vitek MP, Lyubski S, Strittmatter WJ, Enghilde JJ, Bhasin R, Silverman J, Weisgraber KH, Coyle PK, et al: **Transthyretin sequesters amyloid beta protein and prevents amyloid formation.** *Proc Natl Acad Sci U S A* 1994, **91**:8368–8372.
57. Golabek A, Marques MA, Lalowski M, Wisniewski T: **Amyloid beta binding proteins in vitro and in normal human cerebrospinal fluid.** *Neurosci Lett* 1995, **191**:79–82.
58. Buxbaum J, Koziol J, Connors LH: **Serum transthyretin levels in senile systemic amyloidosis: effects of age, gender and ethnicity.** *Amyloid* 2008, **15**:255–261.
59. Li X, Buxbaum JN: **Transthyretin and the brain re-visited: is neuronal synthesis of transthyretin protective in Alzheimer's disease?** *Mol Neurodegener* 2011, **6**:79.
60. Buxbaum JN, Ye Z, Reixach N, Friske L, Levy C, Das P, Golde T, Masliah E, Roberts AR, Bartfai T: **Transthyretin protects Alzheimer's mice from the behavioral and biochemical effects of Abeta toxicity.** *Proc Natl Acad Sci U S A* 2008, **105**:2681–2686.
61. Choi SH, Leight SN, Lee VM, Li T, Wong PC, Johnson JA, Saraiva MJ, Sisodia SS: **Accelerated Abeta deposition in APPsw/PS1deltaE9 mice with hemizygous deletions of TTR (transthyretin).** *J Neurosci* 2007, **27**:7006–7010.
62. Wati H, Kawarabayashi T, Matsubara E, Kasai A, Hirasawa T, Kubota T, Harigaya Y, Shoji M, Maeda S: **Transthyretin accelerates vascular Abeta deposition in a mouse model of Alzheimer's disease.** *Brain Pathol* 2009, **19**:48–57.
63. Sousa JC, Marques F, Dias-Ferreira E, Cerqueira JJ, Sousa N, Palha JA: **Transthyretin influences spatial reference memory.** *Neurobiol Learn Mem* 2007, **88**:381–385.
64. Serot JM, Christmann D, Dubost T, Couturier M: **Cerebrospinal fluid transthyretin: aging and late onset Alzheimer's disease.** *J Neurol Neurosurg Psychiatry* 1997, **63**:506–508.
65. Ribeiro CA, Santana I, Oliveira C, Baldeiras I, Moreira J, Saraiva MJ, Cardoso I: **Transthyretin decrease in plasma of MCI and AD patients: investigation of mechanisms for disease modulation.** *Curr Alzheimer Res* 2012, **9**:881–889.
66. Palha JA, Moreira P, Wisniewski T, Frangione B, Saraiva MJ: **Transthyretin gene in Alzheimer's disease patients.** *Neurosci Lett* 1996, **204**:212–214.
67. Calero M, Rostagno A, Matsubara E, Zlokovic B, Frangione B, Ghiso J: **Apolipoprotein J (clusterin) and Alzheimer's disease.** *Microsc Res Tech* 2000, **50**:305–315.
68. Marques F, Sousa JC, Coppola G, Gao F, Puga R, Brentani H, Geschwind DH, Sousa N, Correia-Neves M, Palha JA: **Transcriptome signature of the adult mouse choroid plexus.** *Fluids Barriers CNS* 2011, **8**:10.
69. Harold D, Abraham R, Hollingworth P, Sims R, Gerrish A, Hamshere ML, Pahwa JS, Moskva V, Dowzell K, Williams A, et al: **Genome-wide association study identifies variants at CLU and PICALM associated with Alzheimer's disease.** *Nat Genet* 2009, **41**:1088–1093.
70. Thambisetty M, Simmons A, Velayudhan L, Hye A, Campbell J, Zhang Y, Wahlund LO, Westman E, Kinsey A, Guntert A, et al: **Association of plasma clusterin concentration with severity, pathology, and progression in Alzheimer disease.** *Arch Gen Psychiatry* 2010, **67**:739–748.
71. Silajdzic E, Minthon L, Bjorkqvist M, Hansson O: **No diagnostic value of plasma clusterin in Alzheimer's disease.** *PLoS ONE* 2012, **7**:e50237.
72. Howlett DR, Hortobagyi T, Francis PT: **Clusterin Associates Specifically with Abeta40 in Alzheimer's Disease Brain Tissue.** *Brain Pathol* 2013, **10.1111/bpa.12057**.
73. Zlokovic BV, Martel CL, Matsubara E, McComb JG, Zheng G, McCluskey RT, Frangione B, Ghiso J: **Glycoprotein 330/megalin: probable role in receptor-mediated transport of apolipoprotein J alone and in a complex with Alzheimer disease amyloid beta at the blood-brain and blood-cerebrospinal fluid barriers.** *Proc Natl Acad Sci U S A* 1996, **93**:4229–4234.
74. Carro E, Trejo JL, Gomez-Isla T, LeRoith D, Torres-Aleman I: **Serum insulin-like growth factor I regulates brain amyloid-beta levels.** *Nat Med* 2002, **8**:1390–1397.
75. Christensen EI, Birn H: **Megalin and cubilin: multifunctional endocytic receptors.** *Nat Rev Mol Cell Biol* 2002, **3**:256–266.
76. Orlando RA, Rader K, Authier F, Yamazaki H, Posner BI, Bergeron JJ, Farquhar MG: **Megalin is an endocytic receptor for insulin.** *J Am Soc Nephrol* 1998, **9**:1759–1766.
77. Carro E, Trejo JL, Gerber A, Loetscher H, Torrado J, Metzger F, Torres-Aleman I: **Therapeutic actions of insulin-like growth factor I on APP/PS2 mice with severe brain amyloidosis.** *Neurobiol Aging* 2006, **27**:1250–1257.
78. Pellicano M, Larbi A, Goldeck D, Colonna-Romano G, Buffa S, Bulati M, Rubino G, Iemolo F, Candore G, Caruso C, et al: **Immune profiling of Alzheimer patients.** *J Neuroimmunol* 2012, **242**:52–59.
79. Sardi F, Fassina L, Venturini L, Inguscio M, Guerriero F, Rolfo E, Ricevuti G: **Alzheimer's disease, autoimmunity and inflammation. The good, the bad and the ugly.** *Autoimmun Rev* 2011, **11**:149–153.
80. Michelucci A, Heurtaux T, Grandbarbe L, Morga E, Heuschling P: **Characterization of the microglial phenotype under specific pro-inflammatory and anti-inflammatory conditions: Effects of oligomeric and fibrillar amyloid-beta.** *J Neuroimmunol* 2009, **210**:3–12.
81. Lee CY, Landreth GE: **The role of microglia in amyloid clearance from the AD brain.** *J Neural Transm* 2010, **117**:949–960.
82. Yu D, Corbett B, Yan Y, Zhang GX, Reinhart P, Cho SJ, Chin J: **Early cerebrovascular inflammation in a transgenic mouse model of Alzheimer's disease.** *Neurobiol Aging* 2012, **33**:2942–2947.
83. Kalaria RN: **Vascular factors in Alzheimer's disease.** *Int Psychogeriatr* 2003, **15**(Suppl 1):47–52.
84. Kalaria RN: **Vascular basis for brain degeneration: faltering controls and risk factors for dementia.** *Nutr Rev* 2010, **68**(Suppl 2):S74–S87.
85. Tripathy D, Sanchez A, Yin X, Luo J, Martinez J, Grammas P: **Thrombin, a mediator of cerebrovascular inflammation in AD and hypoxia.** *Front Aging Neurosci* 2013, **5**:19.
86. Grammas P, Ovase R: **Inflammatory factors are elevated in brain microvessels in Alzheimer's disease.** *Neurobiol Aging* 2001, **22**:837–842.
87. Grammas P, Ovase R: **Cerebrovascular transforming growth factor-beta contributes to inflammation in the Alzheimer's disease brain.** *Am J Pathol* 2002, **160**:1583–1587.
88. Grammas P, Samany PG, Thirumangalakudi L: **Thrombin and inflammatory proteins are elevated in Alzheimer's disease microvessels: implications for disease pathogenesis.** *J Alzheimers Dis* 2006, **9**:51–58.
89. Takeda S, Sato N, Ikimura K, Nishino H, Rakuji H, Morishita R: **Increased blood-brain barrier vulnerability to systemic inflammation in an Alzheimer disease mouse model.** *Neurobiol Aging* 2013, **34**:2064–2070.
90. Herber DL, Mercer M, Roth LM, Symmonds K, Maloney J, Wilson N, Freeman MJ, Morgan D, Gordon MN: **Microglial activation is required for Abeta clearance after intracranial injection of lipopolysaccharide in APP transgenic mice.** *J Neuroimmune Pharmacol* 2007, **2**:222–231.
91. Marques F, Rodrigues AJ, Sousa JC, Coppola G, Geschwind DH, Sousa N, Correia-Neves M, Palha JA: **Lipocalin 2 is a choroid plexus acute-phase protein.** *J Cereb Blood Flow Metab* 2008, **28**:450–455.
92. Kjeldsen L, Cowland JB, Borregaard N: **Human neutrophil gelatinase-associated lipocalin and homologous proteins in rat and mouse.** *Biochim Biophys Acta* 2000, **1482**:272–283.
93. Flo TH, Smith KD, Sato S, Rodriguez DJ, Holmes MA, Strong RK, Akira S, Aderem A: **Lipocalin 2 mediates an innate immune response to bacterial infection by sequestering iron.** *Nature* 2004, **432**:917–921.
94. Rogers JT, Randall JD, Cahill CM, Eder PS, Huang X, Gunshin H, Leiter L, McPhee J, Sarang SS, Utsuki T, et al: **An iron-responsive element type II in the 5'-untranslated region of the Alzheimer's amyloid precursor protein transcript.** *J Biol Chem* 2002, **277**:45518–45528.
95. Duce JA, Tsatsanis A, Cater MA, James SA, Robb E, Wikke K, Leong SL, Perez K, Johanssen T, Greenough MA, et al: **Iron-export ferroxidase activity of beta-amyloid precursor protein is inhibited by zinc in Alzheimer's disease.** *Cell* 2010, **142**:857–867.
96. Liu B, Moloney A, Meehan S, Morris K, Thomas SE, Serpell LC, Hider R, Marciniak SJ, Lomas DA, Crowther DC: **Iron promotes the toxicity of amyloid beta peptide by impeding its ordered aggregation.** *J Biol Chem* 2011, **286**:4248–4256.
97. Choi J, Lee HW, Suk K: **Increased plasma levels of lipocalin 2 in mild cognitive impairment.** *J Neurol Sci* 2011, **305**:28–33.



98. Naude PJ, Nyakas C, Eiden LE, Ait-Ali D, van der Heide R, Engelborghs S, Luiten PG, De Deyn PP, den Boer JA, Eisel UL: **Lipocalin 2: novel component of proinflammatory signaling in Alzheimer's disease.** *FASEB J* 2012, **26**:2811–2823.
99. Ferreira AC, Pinto V, Da Mesquita S, Novais A, Sousa JC, Correia-Neves M, Sousa N, Palha JA, Marques F: **Lipocalin-2 is involved in emotional behaviors and cognitive function.** *Front Cell Neurosci* 2013, **7**:122.
100. Mucha M, Skrzypiec AE, Schiavon E, Attwood BK, Kucerova E, Pawlak R: **Lipocalin-2 controls neuronal excitability and anxiety by regulating dendritic spine formation and maturation.** *Proc Natl Acad Sci U S A* 2011, **108**:18436–18441.
101. Skrzypiec AE, Shah RS, Schiavon E, Baker E, Skene N, Pawlak R, Mucha M: **Stress-induced lipocalin-2 controls dendritic spine formation and neuronal activity in the amygdala.** *PLoS ONE* 2013, **8**:e61046.

doi:10.1186/1750-1326-8-38

**Cite this article as:** Marques et al.: Blood–brain-barriers in aging and in Alzheimer's disease. *Molecular Neurodegeneration* 2013 **8**:38.

**Submit your next manuscript to BioMed Central  
and take full advantage of:**

- Convenient online submission
- Thorough peer review
- No space constraints or color figure charges
- Immediate publication on acceptance
- Inclusion in PubMed, CAS, Scopus and Google Scholar
- Research which is freely available for redistribution

Submit your manuscript at  
www.biomedcentral.com/submit

