

STRAD pseudokinases regulate axogenesis and LKB1 stability

Veleva-Rotse *et al.*

RESEARCH ARTICLE

Open Access

STRAD pseudokinases regulate axogenesis and LKB1 stability

Biliana O Veleva-Rotse^{1,2}, James L Smart^{1,5}, Annette F Baas³, Benjamin Edmonds¹, Zi-ming Zhao⁴, Allyson Brown¹, Lillian R Klug¹, Kelly Hansen¹, Gabrielle Reilly¹, Alexandria P Gardner^{1,2}, Krishnaveni Subbiah¹, Eric A Gaucher⁴, Hans Clevers³ and Anthony P Barnes^{1,2,6,7*}

Abstract

Background: Neuronal polarization is an essential step of morphogenesis and connectivity in the developing brain. The serine/threonine kinase LKB1 is a key regulator of cell polarity, metabolism, tumorigenesis, and is required for axon formation. It is allosterically regulated by two related and evolutionarily conserved pseudokinases, STe20-Related ADapters (STRADs) α and β . The roles of STRAD α and STRAD β in the developing nervous system are not fully defined, nor is it known whether they serve distinct functions.

Results: We find that STRAD α is highly spliced and appears to be the primal STRAD paralog. We report that each STRAD is sufficient for axogenesis and promoting cell survival in the developing cortex. We also reveal a reciprocal protein-stabilizing relationship in vivo between LKB1 and STRAD α , whereby STRAD α specifically maintains LKB1 protein levels via cytoplasmic compartmentalization.

Conclusions: We demonstrate a novel role for STRAD β in axogenesis and also show for the first time in vivo that STRAD α , but not STRAD β , is responsible for LKB1 protein stability.

Keywords: LKB1, Neurodevelopment, Axon, Pseudokinase, STRAD

Background

The vast networks of neural projections in the brain are essential for appropriate connectivity, but how these axons are specified during neuronal differentiation remains unclear. The regulatory mechanisms coordinating axon formation are only beginning to emerge despite the identification of key signaling molecules [1-3]. The protein kinase Liver Kinase B1 (LKB1) is a requisite component of the transduction machinery controlling axon specification both in vitro and in vivo [4,5]. LKB1 catalytic activity is allosterically regulated by the related pseudokinases, STRAD (STe20 Related ADAPTER)-alpha and STRAD-beta (STRAD α and STRAD β) (Figure 1A, [6,7]). While little is known about STRAD β function, homozygous deletion within the human LYK5 (STRAD α) locus (see Additional file 1: Figure S3A) results in a syndromic condition known

as polyhydramnios, megalencephaly, and symptomatic epilepsy (PMSE) [8]. These patients have craniofacial dysmorphology, cognitive deficits, and intractable infantile-onset epilepsy. Given the clear impact on human health and brain development, further insights into STRAD pseudokinases are needed to clarify their contributions to nervous system development and disease.

LKB1 and either STRAD paralog form a heterotrimeric complex with either mouse protein-25 paralog, MO25 α or β , proteins shown to stabilize the LKB1: STRAD dyad by binding to both proteins [6,9]. This activated heterotrimeric complex phosphorylates and activates multiple downstream kinase cascades. LKB1 substrates include the AMPK-like superfamily of kinases that are implicated in a number of physiologic roles including cell metabolism and polarity [10-13]. Interestingly, several members of this family have been shown to regulate various aspects of axon formation: SAD-A/B (also known as BRSK1/2) in the developing cerebral cortex [5,14], AMPK- α 1/ α 2 for axonal growth under metabolic stress [15] and neuronal polarity [16] as well as NUAK1/2 regulation of axonal branching [17].

* Correspondence: barnesan@ohsu.edu

¹Department of Pediatrics-Doernbecher, Children's Hospital, Portland, OR 97239, USA

²Neuroscience Graduate Program, Oregon Health and Science University, Portland, OR 97239, USA

Full list of author information is available at the end of the article

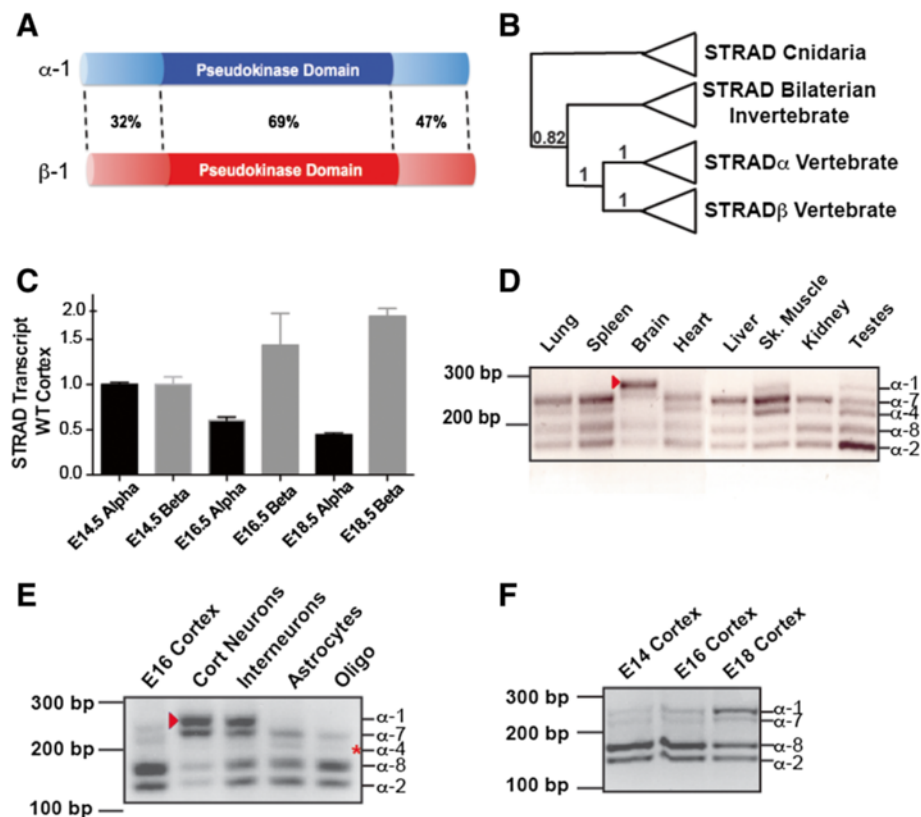


Figure 1 STRAD splice forms are expressed in a tissue-specific manner. (A) Schematic of mouse STRAD α and STRAD β proteins indicating percent similarity between the two proteins. (B) Schematic of phylogenetic tree based on the STRAD gene from Bilaterians using Cnidaria as the outgroup with posterior probabilities indicating support for nodes (0–1, 1 being the strongest support) labeled on nodes of interest. The tree is based on MrBayes phylogenetic analysis (see Additional file 1: Figure S1). (C) Quantitative real-time-PCR of STRAD α and STRAD β across developmental time. (D) Reverse transcriptase-PCR (RT-PCR) of STRAD α indicates that multiple variants exist in distinct tissue types. In particular, the largest species (arrowhead) appears to be specific to brain, skeletal muscle and testes. (E) RT-PCR products from enriched cultures of the dominant CNS cell types. (STRAD α -1 isoform – arrowhead; STRAD α -4 isoform - asterisk). Cort neurons – cerebral cortex primary neurons; Interneurons – medial ganglionic eminence primary neurons, Astrocytes – primary post-natal day 1 astrocytes, Oligo – primary oligodendrocyte cultures. (F) RT-PCR of STRAD α isoforms across developmental time in the cerebral cortex. CNS, central nervous system.

Developmentally, STRAD α is expressed throughout the developing cerebral cortex, while STRAD β is found predominantly in post-migratory neurons of the cortical plate [5], suggesting that these proteins may serve distinct functions during cortical development. Many critical questions remain unaddressed regarding the roles of STRAD pseudokinases during cortical development. Importantly, it is unclear whether STRAD α and STRAD β are functionally redundant during neuronal development and what distinct roles they might serve. Here, we address these questions and provide new insights into the molecular mechanisms of STRAD protein function during neuronal development.

Results

STRAD α is the most evolutionarily conserved STRAD homolog among metazoans

Significant biochemical characterization has been conducted using vertebrate STRADs but few studies have addressed their function *in vivo* using genetic loss-of-function

approaches. Conversely, a number of phenomenological studies, but few biochemical analyses, have been performed using invertebrate STRADs [18–21]. We conducted a phylogenetic analysis of the STRAD proteins to contextualize the relationship and functional contributions of the vertebrate paralogs. We find that metazoan STRAD proteins exhibit a high level of structural and sequence similarity within (Figure 1A) and between species (Figure 1B and see Additional file 1: Figure S1). Our analysis further suggests that a single STRAD gene duplication event occurred sometime between the origin of, and the last common ancestor for, the vertebrate lineage (Figure 1B and Additional file 1: Figure S1). The phylogenetic pattern further indicates that the vertebrate STRAD α is more similar to the single invertebrate STRAD ortholog than is STRAD β . This primacy is paralleled in our loss of function studies and by previous studies demonstrating the profound effects of STRAD α loss-of-function mutations in human patients [8] and by the early postnatal lethality we

observe in STRAD α -null, but not STRAD β -null, mice (see Additional file 1: Figure S3C, data not shown).

A developmentally-regulated, tissue-restricted form of STRAD α is expressed exclusively by neurons in the CNS

Quantitative assessment of STRAD mRNA indicates that STRAD α levels decrease slightly, while STRAD β levels increase throughout cortical development (Figure 1C). Closer examination of this pattern reveals the relative contributions of STRAD α splice variants (Figure 1F). A number of STRAD α isoforms result from differentially utilized exons near the translation initiation site in various adult mouse tissues (Figure 1D and see Additional file 1: Figure S2A), some of which are observed in Western blots of rat tissue [22] (see Additional file 1: Figure S2A for nomenclature). Despite the fact that multiple STRAD α splicing events have been described in human cell lines [23] the *in vivo* expression pattern of STRAD mRNA isoforms in adult tissues and during brain development has remained unknown. We characterized the expression of the STRAD variants relative to one another using reverse transcriptase PCR. Our amplicon analysis indicates that the largest STRAD α variant (STRAD α -1) results from the use of an alternate splice donor site and the inclusion of exon IV (see Additional file 1: Figure S2A). STRAD α -1 appears predominantly in the nervous system, and to a much lesser extent in skeletal muscle and testes (arrowhead Figure 1D). Within the CNS, it is exclusive to neurons (Figure 1E) and is developmentally regulated (Figure 1F). We observe three additional splice variants previously seen and a novel fourth isoform, STRAD α -7, a predicted protein in humans (GenPep EAW94290). STRAD α -4 generates a larger amplicon, yet smaller predicted protein (Figure 1D, see Additional file 1: Figure S2A). This isoform has previously been reported in human tumor cell lines [23], and we detect it in most tissues (Figure 1D-F), but it is essentially absent from neurons (Figure 1E, asterisk). Similarly, human cells lines exhibit splicing in the exons encoding carboxyl regions of the protein [23], but we do not detect these splice forms in mouse tissues (see Additional file 1: Figure S2B).

Previous characterization of STRAD β indicated broad expression in adult tissues and reported a splice form that lacks exon 8 (STRAD β -2), however insufficient resolution limited prior tissue expression studies of this isoform [24,25]. Our results detect STRAD β -1 in all tissues probed and STRAD β -2 is seen in all except skeletal and cardiac muscle (see Additional file 1: Figure S2C,D). Unlike STRAD α , transcriptional levels and splicing of STRAD β appear to vary less in cortical tissue and neurons across developmental time *in vivo* and *in vitro* (see Additional file 1: Figure S2E,F).

STRAD α splice forms and full-length STRAD β exhibit similar competence to drive axon formation

We addressed the functional significance of each STRAD α and STRAD β splice form in neurons using an *ex utero* electroporation gain-of-function approach (Figure 2). We and others have previously shown the ubiquitous STRAD α -2 to be capable of driving the formation of multiple axons when expressed alone in neurons [4] or with LKB1 in neural progenitors [5]. Here, we quantified the proportion of green fluorescent protein positive (GFP⁺) cells with one or more axons after overexpression of each STRAD splice form with or without LKB1. We found that when LKB1 or each STRAD isoform was individually expressed with GFP-expressing control vector, no significant increases in axon number per neuron were observed (Figure 2A-G,H), consistent with prior observations [5].

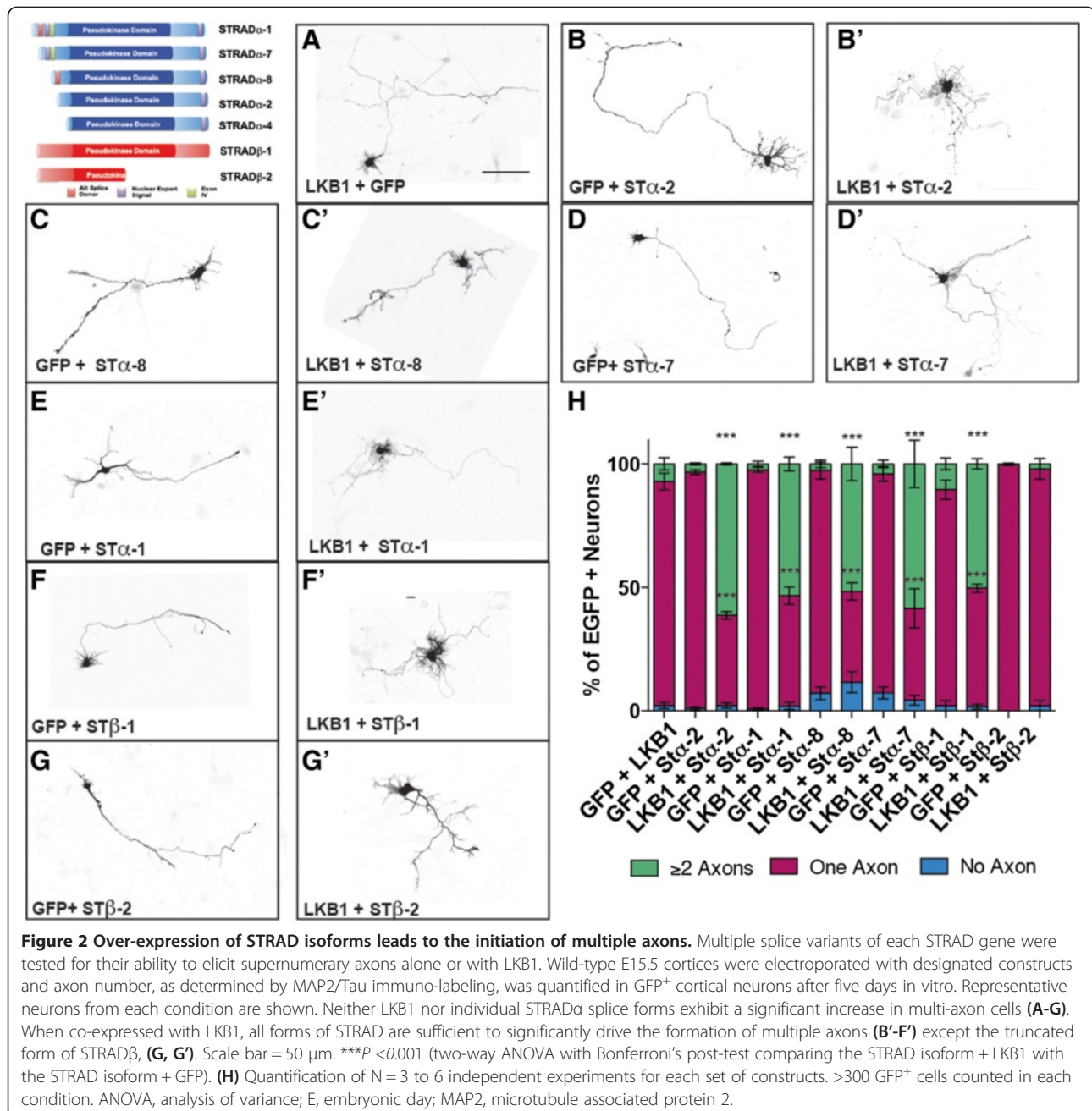
When paired with LKB1, we found that all tested STRAD α splice forms are capable of eliciting multiple axons in a significant proportion of neurons, compared with the STRAD isoform + GFP-expressing vector (Figure 2B,B'-E'). In contrast, only the full-length form of STRAD β was able to induce a similar phenotype (Figure 2F',G') while STRAD β -2 does not significantly affect axogenesis (Figure 2G,G').

Genetic elimination of both STRAD genes in the cerebral cortex disrupts the formation of projection axons

To address the *in vivo* complementation of the STRAD paralogs, we generated two novel mouse lines (a STRAD α -null line and a conditional allele of STRAD β (see Additional file 1: Figure S3A)). The STRAD α constitutive null animals do not produce STRAD α protein (see Additional file 1: Figure S3B) and expire perinatally (see Additional file 1: Figure S3C), while the STRAD β null mice have no overt phenotypes. Histologic characterization of cerebral cortices indicated that elimination of either STRAD α (Figure 3B,B') or STRAD β (Figure 3C,C') alone is not sufficient to disrupt axogenesis. However, deletion of both STRAD genes caused a profound loss of TAG1-positive projection axons (Figure 3D,D'), mirroring the effect observed following conditional deletion of LKB1 [5]. Similarly, neuronal polarization defects (indeterminate neurites) were observed in primary cortical cultures of STRAD α / β double KO cortices compared to controls when immuno-stained for the axon/dendrite markers Tau1 and microtubule associated protein 2 (MAP2), respectively (see Additional file 1: Figure S3E-G). This indicates that either STRAD α or β is sufficient to drive axogenesis during corticogenesis.

Deletion of both STRAD paralogs results in programmed cell death in the cerebral cortex

To test whether eliminating either or both STRAD genes parallels the cortical loss of LKB1 in the context of

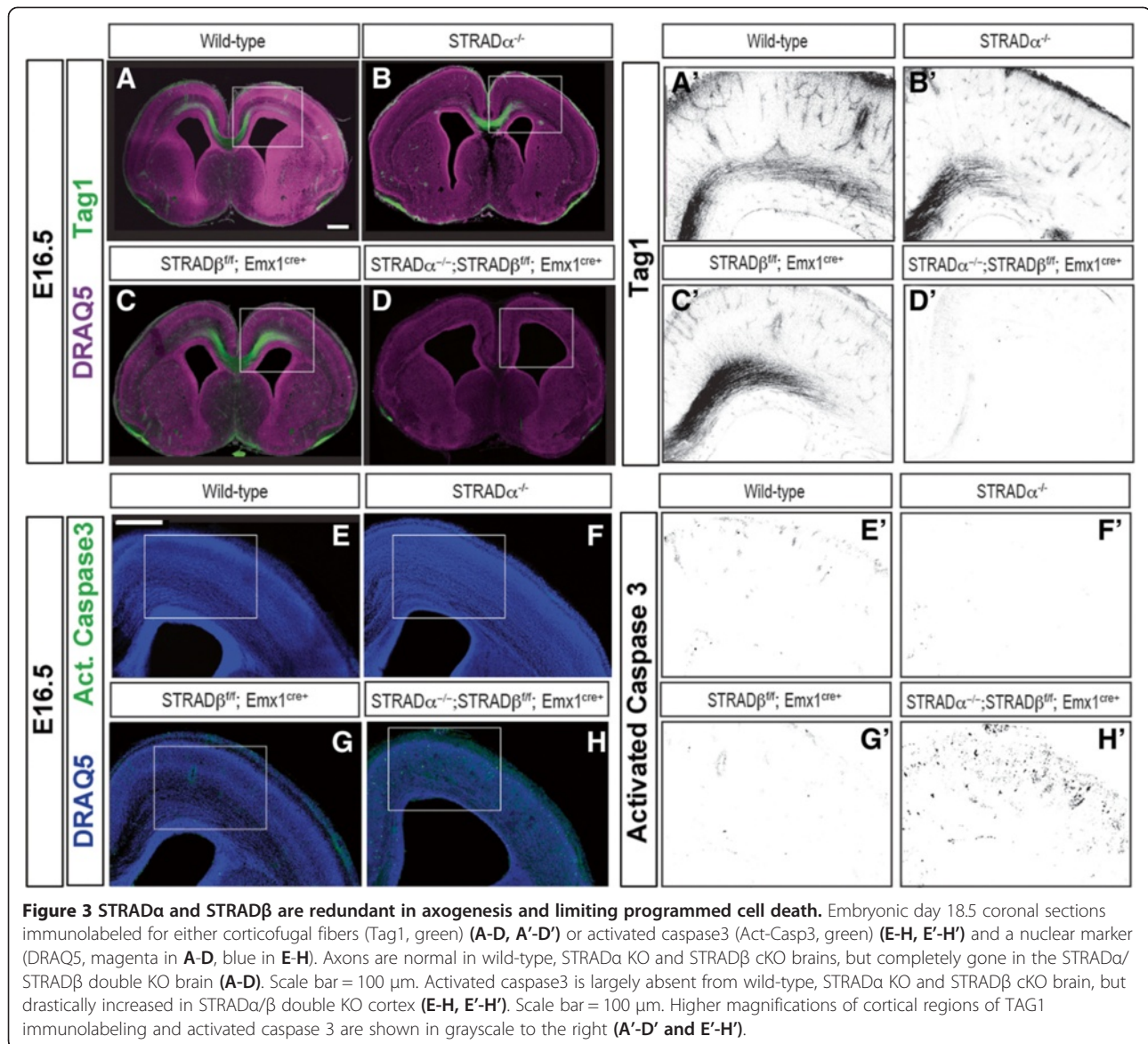


programmed cell death, we examined activated caspase3 in cortical tissue. Immuno-staining of either the single STRAD α KO (Figure 3E,E') or STRAD β cKO (Figure 3F,F') cortices indicates no change in apoptosis relative to wild-type control (Figure 3G,G'). In contrast, the STRAD α / β double KO cortex displays substantial activated caspase3 immuno-labeling, an obvious thinning of the cortical wall, and enlarged ventricles (Figure 3H,H'), a phenotype also observed in the LKB1 cKO mice [5]. These results indicate that loss of both STRAD α and STRAD β is required to phenocopy loss of LKB1, demonstrating the

functional redundancy between these LKB1-activating pseudokinases, and establishing the sufficiency of STRAD β in corticogenesis.

Loss of STRAD α , but not STRAD β , reduces LKB1 stability in vivo

Given the similarity with LKB1 phenotypes, we tested whether endogenous LKB1 expression is affected by loss of either or both STRAD proteins in vivo. We find loss of STRAD α leads to a significant decrease (approximately 85%) in LKB1 protein levels in the embryonic (embryonic day



(E16.5) cerebral cortex (Figure 4A-B), a result mirrored in other tissues (see Additional file 1: Figure S4B). This observation is despite a significant increase in LKB1 transcription (see Additional file 1: Figure S4A), indicating that regulation of protein expression occurs predominantly post-transcriptionally. Surprisingly, this reduction in LKB1 levels impairs neither axogenesis nor cell survival (Figure 3).

In contrast, STRAD β deletion does not affect LKB1 levels, nor is the effect exacerbated by loss of both pseudokinases (Figure 4A-B). We observe a reciprocal *in vivo* stabilizing relationship between LKB1 and STRAD α , as cortical lysates from LKB1^{fl/fl}; Emx1-cre mice display a significant reduction in STRAD α levels (Figure 4D), extending observations of STRAD α and LKB1 stability we and others have previously made *in vitro* [4,26-30].

A developmental analysis using a conditional allele of STRAD α (see Additional file 1: Figure S3A,D) indicates that cortical LKB1 expression is compromised by STRAD α loss in all post-natal ages examined (Figure 4C), indicating that STRAD α is absolutely required to achieve normal levels of LKB1. The fact that this dramatic reduction in LKB1 levels in the STRAD α KO did not affect axon formation led us to explore how this alteration in protein expression impacts LKB1 phosphorylation at serine 428 (S431 in murine LKB1), a post-translational modification of LKB1 that we and Shelley et al. have shown to be critical for axogenesis [4,5]. Western blot analysis indicates that the proportion of LKB1 phosphorylated on S431 increases relative to total LKB1 in the STRAD α KO, but that the total amount of pS431 is essentially unchanged (see Additional file 1: Figure S4E).

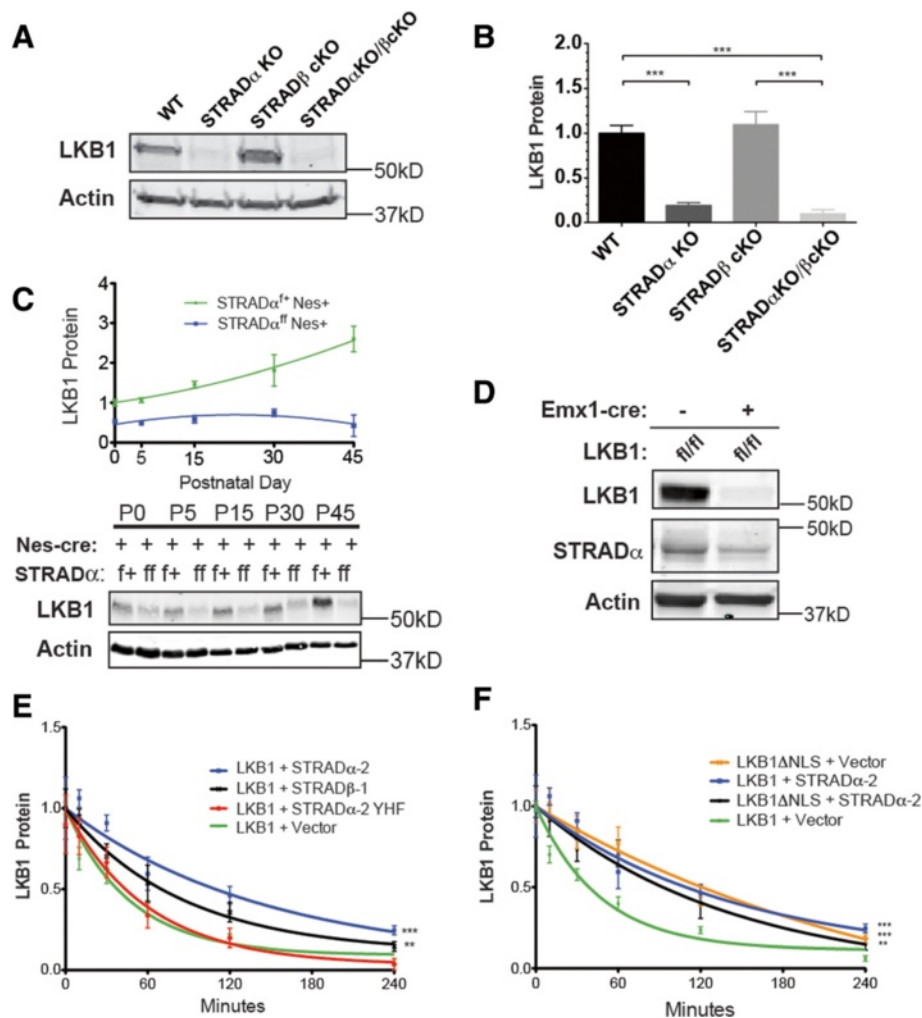


Figure 4 STRAD α , but not STRAD β stabilizes LKB1 protein. (A) Representative Western blot of lysates from wild-type, STRAD α KO, STRAD β cKO, or STRAD α/β double KO embryonic day 16.5 (E16.5) cortex. Actin is a loading control. (B) Quantification of LKB1 protein levels analyzed by Western blot, normalized to wild-type cortical lysate. $N \geq 15$ cortices from at least three litters of each genotype. There is no significant difference between columns 1 and 3 or columns 2 and 4. $***P < 0.0001$ using one-way ANOVA with Bonferroni's multiple comparison test. (C) Western blot of Nestin-cre $^{+}$; STRAD α^{+} or STRAD α^{ff} lysates across developmental time. Quantification of LKB1 protein, normalized to postnatal day 0 (P0) STRAD α^{+} ; Nestin-cre $^{+}$. $N \geq 3$ brains of each genotype from three litters for each time-point. (D) Western blot of E16.5 cortical lysates showing STRAD α protein is significantly reduced following conditional cortical loss of LKB1. (E and F) Quantification of $N \geq 4$ independent LKB1 stability time-courses in HEK cells transfected with epitope-tagged LKB1 protein following cycloheximide-mediated translation inhibition, with three to six replicates of each condition in each experiment. (E) STRAD α -2 significantly increases LKB1 half-life, as does STRAD β -1, to a lesser extent. (F) LKB1 Δ NLS is as stable as LKB1 + STRAD α -2 and LKB1 Δ NLS + STRAD α -2 is similar to LKB1 Δ NLS + Vector. Error bars represent SEM. Repeated measures ANOVA with Dunnett's multiple comparison test with LKB1 + empty vector as the control was employed. $***P < 0.001$, $**P < 0.005$. ANOVA, analysis of variance; KO, knockout; SEM, standard error of the mean.

We find that HEK293 cells exhibit similar patterns of STRAD-dependent LKB1 stability (Figure 4E, see Additional file 1: Figure S4F), as observed in prior studies [4,29]. In these cells, we were able to replicate the stabilizing effects of STRAD α on LKB1 by measuring protein turnover following cycloheximide-mediated protein synthesis inhibition (Figure 4E-F). These results show that STRAD β co-expression can preserve LKB1 protein levels, but to a lesser extent than STRAD α . This observation likely represents sequestration of LKB1 in the

cytoplasm by the predominantly cytoplasmic STRAD β . Using a previously validated LKB1-interaction mutant of STRAD α -2 (YHF, Y185F/H231A/F233A) [9,31], we find that LKB1-binding by STRAD α is required for this stabilizing effect (Figure 4E, see Additional file 1: Figure S4F), indicating that direct interaction mediates the stabilization of LKB1.

Previous biochemical and cell biological studies have specifically implicated STRAD α in shuttling LKB1 to the cytoplasm [6,32], as STRAD β lacks key residues involved

in the interaction with the nuclear export machinery [32]. We tested whether the nuclear export function of STRAD α could be contributing to LKB1 stability by altering LKB1 sub-cellular localization, potentially sequestering the kinase from degradation. To do this, we examined LKB1 stability in the context of a nuclear-localization signal (NLS) mutant of LKB1 (LKB1- Δ NLS) [33] (Figure 4E, see Additional file 1: Figure S5). LKB1- Δ NLS demonstrates a robust stabilization when expressed alone (Figure 4F), and this increased stability is not significantly different from WT-LKB1 expressed in combination with STRAD α -2, nor is the stability of LKB1- Δ NLS further enhanced by co-expression of STRAD α -2 (Figure 4F). Given that nuclear export of LKB1 affects its stability and that splice forms of STRAD α can contain an additional nuclear export signal (NES), we tested how these isoforms (STRAD α -1 and -7) impact STRAD's ability to stabilize LKB1 and did not observe any significant differences in LKB1 stability conferred to these STRAD α splice variants (see Additional file 1: Figure S4G).

Discussion

The integral relationship between these two pseudokinases and their partner kinase is evidenced by the fact that all species bearing an LKB1 locus also contain at least one STRAD gene. Here, we provide evidence that STRAD α is likely the phylogenetic ancestor of the STRAD paralogs in vertebrates, with the STRAD duplication event potentially providing selective advantage via genomic redundancy for this protein family.

Our data reveal a complex expression pattern of STRAD proteins in both developing and adult tissues and identify a new form of STRAD α (STRAD α -7) not previously reported. We also establish that the STRAD α -1 splice form is restricted to brain, skeletal muscle and testis in the mouse. Most intriguing is our discovery that a second nuclear export sequence within the amino-terminus STRAD α that has been previously demonstrated to be functional for LKB1 export [32] is developmentally regulated by splicing during brain development. While the STRAD α carboxy-terminal export signal contains a phosphorylation site targeted by LKB1 [7], this N-terminal NES lacks any known post-translational modification, and may represent a less regulated form of STRAD α nuclear export.

Our work and that of others demonstrates LKB1 to be a requisite component of the transduction machinery underlying axon formation [4,5] and other cell polarity hallmarks [10,34]. Acute knockdown of STRAD α with small hairpin RNAs (shRNAs) leads to dysregulated mTOR signaling in the CNS [35,36], supporting the idea that STRAD α is also an important regulator of nervous system function. Biochemical characterization of the LKB1:STRAD complex indicates that its formation is required for

allosteric activation of LKB1 [7,22,31]. Previous neuronal loss-of-function studies have not distinguished between a requirement of LKB1 protein expression and kinase activity, but our in vivo data demonstrate that without these critical activator proteins, LKB1 is unable to elicit axon specification (Figure 3). We demonstrate that either STRAD protein is competent to drive axogenesis, and report the first in vivo physiological contribution of STRAD β .

It is important to note that previous studies evaluating STRAD α function biochemically and cell biologically have often used the STRAD α -1 form. Our results indicate that additional studies may be required to clarify the cellular context and specific roles of STRAD α depending on which isoforms of the protein are normally expressed in a given cell type or tissue. It is possible that these amino-terminal variants of STRAD α may affect recruitment of additional components to STRAD: LKB1 signaling complexes or result in alteration in localization or allosteric activation of LKB1, as previously suggested [23].

Furthermore, the increased apoptosis we observe following simultaneous inactivation of both STRAD genes provides another parallel with the LKB1 cKO [5] and suggests that allosteric activation of LKB1 plays a significant role in cell survival. This apoptosis likely results from failed axogenesis and subsequent loss of trophic support [5,17] as indicated by studies using conditional LKB1 mice and the post-mitotic cre recombinase regulated by the NEX (NeuroD6/MATH2) promoter. Whether compromised axogenesis is the sole driver triggering this cell death remains unclear, but it is possible that additional survival pathways have also been affected by LKB1 or STRAD α / β loss. Future studies exploring the nature and extent of this cell death, as well as the timing of its induction relative to when cortical axons encounter their intermediate and final targets should be of great value.

Our results also indicate that STRAD α uniquely plays a significant role in stabilizing LKB1 protein levels in vivo and that this stabilizing effect arises in large part from the binding and sub-cellular localization conferred upon LKB1 by STRAD α . This is consistent with a previous study mapping the STRAD-MO25 interaction using carboxy-terminal deletions of STRAD α [6]; however, this study did not directly implicate the deleted carboxy-terminal NES. Interestingly, the ability to stabilize LKB1 is not potentiated by STRAD α isoforms containing an additional NES, leaving open the role of the splicing-regulated amino terminal export signal. The nuclear localization of LKB1 also appears to be a vertebrate specialization, as invertebrate forms of LKB1 have been shown to localize to the cytoplasm and plasma membrane [37,38] while mammalian LKB1 consistently displays a partially nuclear component (see Additional file 1: Figure S5, [32,39]). This is the first report of regulated LKB1 and STRAD α stability in vivo, expanding upon previous work in cultured cells [4,26-30]. The third

component of the LKB1: STRAD complex, MO25, is not affected by the loss of either protein (see Additional file 1: Figure S4C), an interesting result given previous work demonstrating that shRNA-mediated MO25 knockdown led to a reduction in LKB1 protein levels [6]. It has recently been shown that MO25 is also a critical component in regulating the Mst and OSR1/SPAK family of kinases [22] and, thus, may be stabilized through interaction with these or other partner proteins, or may not be under the same regulatory mechanism targeting STRAD α or LKB1.

Efforts to understand LKB1 stability have revealed roles for heat shock proteins 70 and 90 (HSP70 and HSP90), as well as the proteasome in targeting STRAD α for degradation and indicate that STRAD α and HSP90 exist as competitors for LKB1 binding [26,40-42]. Here we show for the first time that a reciprocal relationship exists between STRAD α and LKB1 *in vivo* such that LKB1 loss leads to a reduction in STRAD α protein levels (Figure 4D, see Additional file 1: Figure S4D). Our observation of reciprocal stability is similar to that seen for other protein-binding partner pairs such as TSC1/2 [43] and Mdm2/SHP [44]. While it is unclear whether similar strategies exist for proteasomal avoidance in various protein pairs, this coordinated protein regulation between related and requisite components of a given signaling pathway likely represents an additional layer of coordinate regulation.

The failure of STRAD β to compensate *in vivo* for the loss of STRAD α (Figure 4A,B) highlights the primal role of STRAD α . While axon formation is not affected by STRAD α deletion, additional functions within particular cell types and tissue requiring greater amounts of LKB1 may be compromised. Since PMSE patients exhibit symptoms linked to specific organ systems [8], this may reflect the lack of redundancy in LKB1 stabilization between STRAD α and β . The fact that human patients often survive into early adolescence while STRAD α KO mice die perinatally may also indicate additional functions or alternate developmental expression patterns for human STRAD α compared to mouse STRAD α .

Pseudokinases have been proposed to occupy approximately 10% of the human kinome [45] but in many cases the function of these proteins remains obscure. Our efforts assign both redundant and unique functions to two of these pseudokinases. The specific and profound nature of the effects caused by perturbing the LKB1: STRAD dyad leads to the conclusion that, as a crucial regulator of multiple signaling pathways, LKB1 signaling requires such redundancy in its activation scheme. Our evolutionary-based results illuminate a clear and meaningful phylogenetic relationship between these evolutionarily conserved pseudokinases consistent with our previous LKB1 loss of function studies. STRAD α emerges as the clear primal paralog and these results present a new context in which to understand parallels between invertebrate and vertebrate functions of STRAD

proteins. This analysis sets the groundwork to extend our understanding of how STRAD proteins have expanded functionalities across evolutionary time while displaying paralog-restricted specializations in vertebrate organisms. These results also demonstrate the necessary role of these proteins in the developing nervous system and add STRADs to the collection of proteins required for axogenesis.

Conclusions

LKB1 is an important regulator of neuronal polarity and axogenesis, yet its nuanced regulation by the STRAD proteins had remained largely unexplored. Here we provide evidence of the evolutionary primacy of STRAD α . We also demonstrate that messenger RNAs for the STRAD paralogs undergo a tremendous amount of tissue-restricted and cell-type specific splicing. We show that either STRAD α or STRAD β is necessary and sufficient for axon formation in the developing cortex, the first report of such functional redundancy between STRAD α and STRAD β (Figure 5). Most importantly, we find that only STRAD α can significantly stabilize LKB1 protein *in vivo* and that this stabilizing effect is required for up-regulation of LKB1 expression during brain development and maturation. LKB1 stabilizes STRAD α *in vivo* as well, indicating a reciprocal stabilizing relationship between this kinase and its regulatory partner. The normal axogenesis we observe in the absence of STRAD α indicates that low levels of LKB1 are sufficient to provide the necessary signaling to permit axon specification in the developing cortex. In contrast, the perinatal lethality of these STRAD α -null mice indicates a stronger sensitivity to LKB1 expression levels in other organ systems. Taken together, our data establish a previously unknown redundancy for STRAD β in axogenesis and demonstrate a unique role for STRAD α in stabilizing LKB1 protein (Figure 5).

Methods

Phylogenetic analysis

Sequences were aligned using multiple sequence comparison by log-expectation (MUSCLE). Phylogenetic analysis was performed using MPI version of MrBayes 3.1.2 with MPICH2 installed by running in parallel on eight nodes [46,47]. Bayesian trees with posterior probabilities were constructed with mixed amino acid models, a gamma distribution for rate variation among sites and a proportion of invariable sites. MrBayes was executed with two runs (four chains for each run), four million generations of Markov Chain Monte Carlo (MCMC) analyses, with 1,000 as the sample frequency and with a temperature parameter 0.2. The number of MCMC generations assured convergence of the two runs by having a standard deviation of split frequencies less than 0.005. The posterior probability of each split was estimated by sumt

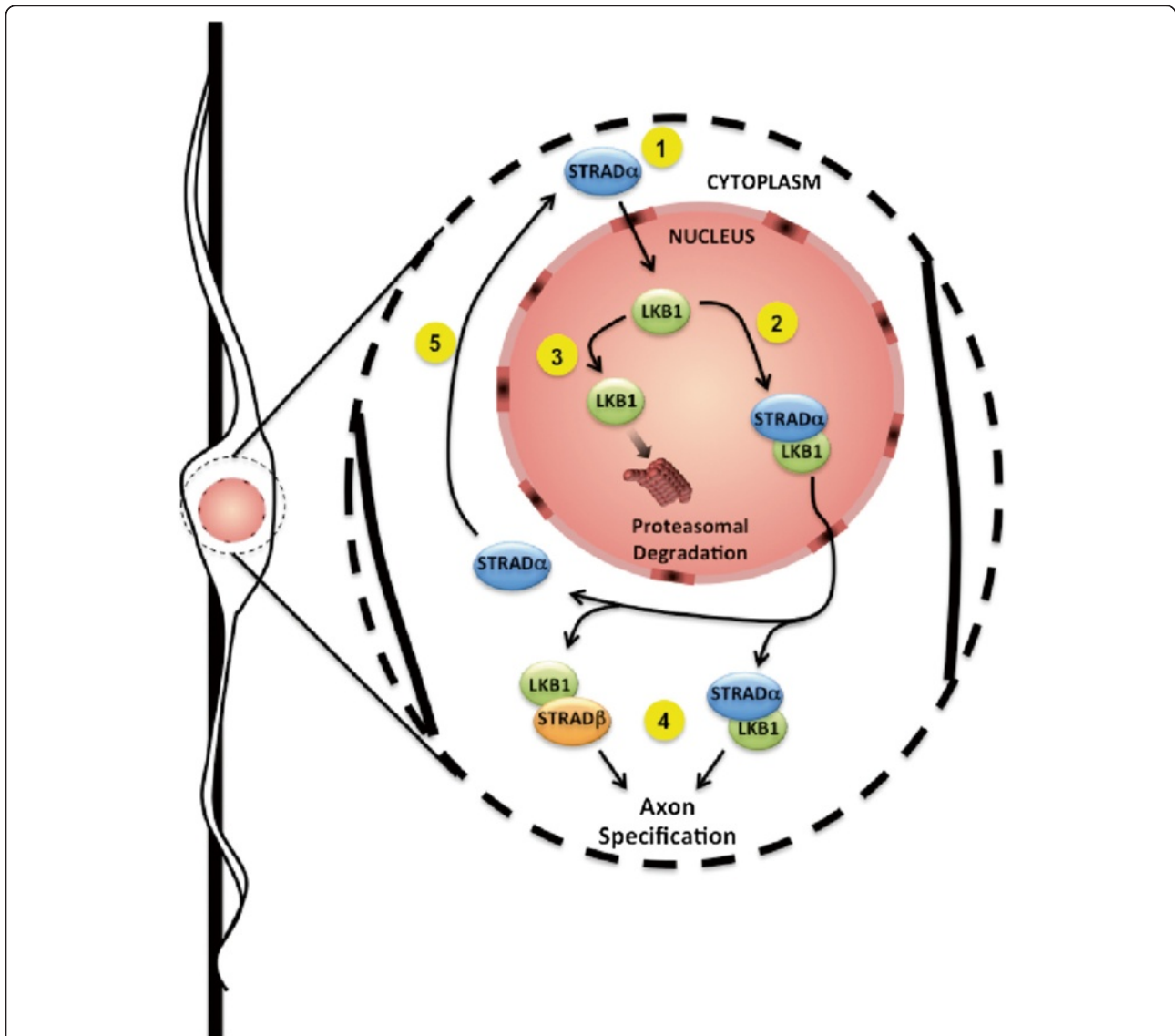


Figure 5 Schematic summarizing the activation and turnover of LKB1 in a polarizing neuron as it transits along a radial glial fiber. STRAD α shuttles from the cytoplasm to the nucleus (1). At least two possible outcomes exist for nuclear LKB1 either binding to STRAD α (2) or degradation via the proteasome (3). Once exported by STRAD α to the cytoplasm, LKB1 can drive axogenesis (4) by either remaining bound to STRAD α or by binding STRAD β . In the latter case, STRAD α may return to the nucleus once again (5).

with 1,000 trees discarded as burnin based on the plot of 'generation vs. log probability'. Tree with branch lengths and posterior probabilities is shown in Additional file 1: Figure S1. Parameters were summarized by sump with 1,000 burnin, and values for the Potential Scale Reduction Factor (PSRF) were all close to 1.0 for all parameters. Scale bar represents amino acid replacements/site/unit evolutionary time.

Animals

All mouse experiments in this study were performed using methods and protocols reviewed and approved by the

Oregon Health and Science University Institutional Animal Care and Use Committee (protocol number IS00001565) or the Utrecht University Institutional Animal Care and Use Committee (protocol number HL05.1010 and governmental approval number E17) and were carried out in accordance with National Institutes of Health standards and following established guidelines of the Public Health Service. The STRAD α gene trap mice were generated by random insertion of a virally-encoded splice acceptor cassette into mouse embryonic stem cells (Lexicon Genetics, see Additional file 1: Figure S3A) and STRAD β -floxed transgenics bear Cre recombinase

recognition sites flanking exon 2 which encodes the start codon of the open reading frame (see Additional file 1: Figure S3A). For conditional and germ-line deletion, the STRAD β conditional line was mated to mice carry cre recombinase under the control of either the empty spiracles homeobox 1 (Emx1) or cytomegalovirus (CMV) promoter. LKB1 floxed mice are available from the National Cancer Institute Mouse Repository (strain number 01XN2).

Constructs and reagents

Total RNA from mouse tissues was extracted using Trizol reagent (Life Technologies, Grand Island, NY, USA) alone or in combination with RNeasy Mini Kit (Qiagen, Valencia, CA, USA). A total of 2 μ g RNA was used as a template with Superscript VILO cDNA Synthesis Kit (Life Technologies). Alternatively, we employed a polyadenylated mRNA-derived cDNA tissue panel (Clontech, Mountain View, CA, USA). Splice forms of STRAD α were amplified using Taq polymerase (Qiagen) with the following primers of the STRAD α message in mouse. The sequences for 5' segments were as follows: 5'-TGCGCTCTGACTCCTA GACC-3' and 5'-GCTGCTCATCATCTCTGGTTT-3'. To detect 3' splicing, primers targeting this region were: 5'-TACGGCTCTGCAAGGATCT-3' and 5'-AGTTGGTG ATGGGAGTGACTG-3'.

STRAD β was amplified using the following primers:

5'-TCTGCACCAAATGGCTGTA-3' and 5'-ACATCC AGTGGGCTATACGG-3'. Amplicons were purified and sub-cloned into either the TOPO-TA pCR 2.1 or pCR Blunt vector (Life Technologies) and sequenced using M13 forward or reverse primer. Quantitative RT-PCR was carried out based on the manufacturers protocol (Applied Biosystems – Life Technologies, Grand Island, NY) using total RNA extracted as described above.

Ex utero electroporation and primary neuron culture

Ex utero electroporation was performed as described previously using a 2 μ g/ μ L final concentration of cDNA in STRAD/LKB1 overexpression experiments (5). After electroporation, cortices were dissected, dissociated and plated on poly-D-Lysine-laminin coated coverslips (BD Biosciences, San Jose, CA, USA), cultured for multiple days in vitro in Neurobasal media supplemented with B27 supplement, penicillin-streptomycin, and Glutamax (all from Life Technologies).

Astrocyte culture

Astrocytes were cultured according to the Banker method from P1 pups [48]. They were fed every third day with glial MEM (MEM, 20% glucose, penicillin/streptomycin, 10% heat-inactivated horse serum) – all from Life Technologies. RNA was collected once astrocytes reached confluency.

Immunohistochemistry

Cells and tissues were fixed in 4% paraformaldehyde in phosphate-buffered saline (PBS) for 20 minutes at room temperature (cells) or overnight at 4°C (tissues) on a rotating shaker. Before immunostaining, they were blocked for one hour in 0.1% cold water fish skin gelatin/1%BSA/0.5% TritonX-100/0.01 M Tris-buffered saline (TBS) (all from Sigma St. Louis, MO), after which primary antibodies were added (see Additional file 1: Table S1) overnight at 4°C on a rotating shaker then washed 3 \times 10 minutes in 1x PBS. Alexa-Fluor fluorescent secondary antibodies (Life Technologies) were applied at 1:1,000 in the same blocking solution with the addition of 5% goat serum for one hour at room temperature in the dark.

Cycloheximide experiments

Cycloheximide (Sigma) at 100 mg/mL was used at 50 μ g/mL final concentration in protein stability experiments. All protein stability experiments were carried out approximately 16 hours after transfection in Optimem media (Life Technologies). For time-courses of LKB1 degradation, cells were treated at the indicated time point relative to control, then lysed and analyzed by Western blot. The amount of LKB1 protein was normalized to actin in each sample, and compared with untreated cells from the same experiment to determine the relative amount of LKB1 protein remaining at each time point. Curves were determined by Prism5 software's nonlinear fit of exponential decay function.

Additional file

Additional file 1: Figure S1. MrBayes tree of STRAD in metazoans. **Figure S2.** Analysis of STRAD splicing in adult tissues and during cortical development. **Figure S3.** STRAD gene structure and diagram of mutant and conditional alleles, protein expression, Punnett square analysis of STRAD-null survival, and immunocytochemistry of polarity markers in cultured neurons from the STRAD-null cerebral cortex. **Figure S4.** Analysis of LKB1 mRNA expression in the STRAD-null cortex and additional protein stability data. **Figure S5.** Subcellular localization of epitope-tagged LKB1 and STRAD variants expressed in HEK293 cells. **Table S1.** Table of antibodies used in this study.

Abbreviations

BSA: bovine serum albumin; CHX: cycloheximide; CMV: cytomegalovirus; CNS: central nervous system; E: embryonic day; EMX1: empty spiracles homeobox 1; GFP: green fluorescent protein; HSP: heat shock protein; LKB1: liver kinase B1; MAP2: microtubule associated protein 2; MO25: mouse protein 25; NEX: (NeuroD6/MATH2); NES: nuclear export signal; NLS: nuclear-localization signal; P: postnatal day; PBS: phosphate-buffered saline; PMSE: polyhydramnios, megalencephaly, and symptomatic epilepsy; shRNA: small hairpin RNA; STRAD: STE20-Related Adapter; TBS: Tris-buffered saline.

Competing interests

The authors declare they have no competing interests.

Authors' contributions

BOVR conducted *ex utero* electroporation and primary neuronal and astrocyte culture, protein stability studies, western blot analysis, immuno-histochemical

and -cytochemical staining. BOVR, JLS, BE, LK and KS analyzed STRAD splice variants. BOVR and AB quantified neuronal morphologies. AFB and HC generated and contributed novel mouse lines. BOVR, LK and GR generated and validated novel expression constructs. BOVR, BE, LK, APG and KS genotyped and maintained the mouse colonies. KH conducted qPCR analysis. ZZ and EG conducted the phylogenetic analysis. BOVR and APB designed the experiments. BOVR, JLS, EG and APB created a draft paper and all authors contributed critical revisions. All authors read and approved the final manuscript.

Acknowledgements

This work was supported by the National Institutes of Health grant (1R01NS079433-01) and a Friends of Doernbecher Award to APB, NASA Exobiology grant (NNX13AI08G) and the NASA Astrobiology Institute to EAG. We thank Drs. Magda Petryniak and Gregory Potter for providing primary oligodendrocyte cultures and Dr. Gary Banker and Barbara Smoody for advice and assistance in generating primary astrocyte cultures. We also thank Dr. William Skach as well as the members of the Gaucher, Clevers and Barnes laboratories for helpful advice and comments. We appreciate the critical comments on this manuscript provided by Drs. Soo-Kyung Lee, Gina Vaccaro, Michael Cohen and Franck Polleux.

Author details

¹Department of Pediatrics-Doernbecher, Children's Hospital, Portland, OR 97239, USA. ²Neuroscience Graduate Program, Oregon Health and Science University, Portland, OR 97239, USA. ³Hubrecht Institute, Utrecht University, Utrecht, The Netherlands. ⁴School of Biology, Georgia Institute of Technology, Atlanta, GA, USA. ⁵George Fox University, Newberg, OR, USA. ⁶Department of Cell and Developmental Biology, Oregon Health and Science University, Portland, OR 97239, USA. ⁷Oregon Health and Science University, 3181 SW Sam Jackson Pk Rd, Mailcode: L481, Portland, OR 97239, USA.

Received: 20 October 2013 Accepted: 18 February 2014

Published: 4 March 2014

References

- Barnes AP, Polleux F: Establishment of axon-dendrite polarity in developing neurons. *Annu Rev Neurosci* 2009, **32**:347-381.
- Polleux F, Snider W: Initiating and growing an axon. *Cold Spring Harb Perspect Biol* 2010, **2**:a001925.
- Arimura N, Kaibuchi K: Neuronal polarity: from extracellular signals to intracellular mechanisms. *Nat Rev Neurosci* 2007, **8**:194-205.
- Shelly M, Cancedda L, Heilshorn S, Sumbre G, Poo MM: LKB1/STRAD promotes axon initiation during neuronal polarization. *Cell* 2007, **129**:565-577.
- Barnes AP, Lilley BN, Pan YA, Plummer LJ, Powell AW, Raines AN, Sanes JR, Polleux F: LKB1 and SAD kinases define a pathway required for the polarization of cortical neurons. *Cell* 2007, **129**:549-563.
- Boudeau J, Baas AF, Deak M, Morrice NA, Kieloch A, Schutkowski M, Prescott AR, Clevers HC, Alessi DR: MO25alpha/beta interact with STRADalpha/beta enhancing their ability to bind, activate and localize LKB1 in the cytoplasm. *EMBO J* 2003, **22**:5102-5114.
- Baas AF, Boudeau J, Sapkota GP, Smit L, Medema R, Morrice NA, Alessi DR, Clevers HC: Activation of the tumour suppressor kinase LKB1 by the STE20-like pseudokinase STRAD. *EMBO J* 2003, **22**:3062-3072.
- Puffenberger EG, Strauss KA, Ramsey KE, Craig DW, Stephan DA, Robinson DL, Hendrickson CL, Gottlieb S, Ramsay DA, Siu VM, Heuer GG, Crino PB, Morton DH: Polyhydramnios, megalencephaly and symptomatic epilepsy caused by a homozygous 7-kilobase deletion in LYK5. *Brain* 1929-1941, **2007**:130.
- Zequiraj E, Filippi BM, Goldie S, Navratilova I, Boudeau J, Deak M, Alessi DR, van Aalten DMF: ATP and MO25alpha regulate the conformational state of the STRADalpha pseudokinase and activation of the LKB1 tumour suppressor. *PLoS Biol* 2009, **7**:e1000126.
- Jansen M, Ten Klooster JP, Offerhaus GJ, Clevers H: LKB1 and AMPK family signaling: the intimate link between cell polarity and energy metabolism. *Physiol Rev* 2009, **89**:777-798.
- Alessi DR, Sakamoto K, Bayascas JR: LKB1-dependent signaling pathways. *Annu Rev Biochem* 2006, **75**:137-163.
- Lizcano JM, Göransson O, Toth R, Deak M, Morrice NA, Boudeau J, Hawley SA, Udd L, Mäkelä TP, Hardie DG, Alessi DR: LKB1 is a master kinase that activates 13 kinases of the AMPK subfamily, including MARK/PAR-1. *EMBO J* 2004, **23**:833-843.
- Shackelford DB, Shaw RJ: The LKB1-AMPK pathway: metabolism and growth control in tumour suppression. *Nat Rev Cancer* 2009, **9**:563-575.
- Kishi M, Pan YA, Crump JG, Sanes JR: Mammalian SAD kinases are required for neuronal polarization. *Science* 2005, **307**:929-932.
- Williams T, Courchet J, Viollet B, Brenman JE, Polleux F: AMP-activated protein kinase (AMPK) activity is not required for neuronal development but regulates axogenesis during metabolic stress. *Proc Natl Acad Sci U S A* 2011, **108**:5849-5854.
- Amato S, Liu X, Zheng B, Cantley L, Rakic P, Man HY: AMP-activated protein kinase regulates neuronal polarization by interfering with PI 3-kinase localization. *Science* 2011, **332**:247-251.
- Courchet J, Lewis TL Jr, Lee S, Courchet V, Liou DY, Aizawa S, Polleux F: Terminal axon branching is regulated by the LKB1-NUAK1 kinase pathway via presynaptic mitochondrial capture. *Cell* 2013, **153**:1510-1525.
- Kim JSM, Hung W, Narbonne P, Roy R, Zhen M: C. elegans STRAD and SAD cooperatively regulate neuronal polarity and synaptic organization. *Development* 2010, **137**:93-102.
- Narbonne P, Hyenne V, Li S, Labbé JC, Roy R: Differential requirements for STRAD in LKB1-dependent functions in C. elegans. *Development* 2010, **137**:661-670.
- Chien SC, Brinkmann EM, Teuliere J, Garriga G: Caenorhabditis elegans PIG-1/MELK acts in a conserved PAR-4/LKB1 polarity pathway to promote asymmetric neuroblast divisions. *Genetics* 2013, **193**:897-909.
- Denning DP, Hatch V, Horvitz HR: Programmed elimination of cells by caspase-independent cell extrusion in C. elegans. *Nature* 2012, **488**:226-230.
- Filippi BM, de Los HP, Mehellou Y, Navratilova I, Gourlay R, Deak M, Plater L, Toth R, Zequiraj E, Alessi DR: MO25 is a master regulator of SPAK/OSR1 and MST3/MST4/YSK1 protein kinases. *EMBO J* 2011, **30**:1730-1741.
- Marignani PA, Scott KD, Bagnulo R, Cannone D, Ferrari E, Stella A, Guanti G, Simone C, Resta N: Novel splice isoforms of STRADalpha differentially affect LKB1 activity, complex assembly and subcellular localization. *Cancer Biol Ther* 2007, **6**:1627-1631.
- Nishigaki K, Thompson D, Yugawa T, Rulli K, Hanson C, Cmarik J, Gutkind JS, Teramoto H, Ruscetti S: Identification and characterization of a novel Ste20/germinal center kinase-related kinase, polyploidy-associated protein kinase. *J Biol Chem* 2003, **278**:13520-13530.
- Sanna MG, da Silva CJ, Luo Y, Chuang B, Paulson LM, Nguyen B, Deveraux QL, Ulevitch RJ: ILPIP, a novel anti-apoptotic protein that enhances XIAP-mediated activation of JNK1 and protection against apoptosis. *J Biol Chem* 2002, **277**:30454-30462.
- Eggers CM, Kline ER, Zhong D, Zhou W, Marcus AI: STE20-regulated kinase adaptor protein alpha (STRAD) regulates cell polarity and invasion through PAK1 signaling in LKB1 null cells. *J Biol Chem* 2012, **287**:18758-18768.
- Guerreiro AS, Fattet S, Kulesza DW, Atamer A, Elsing AN, Shalaby T, Jackson SP, Schoenwaelder SM, Grotzer MA, Delattre O, Arcaro A: A sensitized RNA interference screen identifies a novel role for the PI3K p110y isoform in medulloblastoma cell proliferation and chemoresistance. *Mol Cancer Res* 2011, **9**:925-935.
- Baas AF, Kuipers J, van der Wel NN, Battle E, Koerten HK, Peters PJ, Clevers HC: Complete polarization of single intestinal epithelial cells upon activation of LKB1 by STRAD. *Cell* 2004, **116**:457-466.
- Cheng PL, Lu H, Shelly M, Gao H, Poo MM: Phosphorylation of E3 ligase Smurf1 switches its substrate preference in support of axon development. *Neuron* 2011, **69**:231-243.
- Hawley SA, Boudeau J, Reid JL, Mustard KJ, Udd L, Mäkelä TP, Alessi DR, Hardie DG: Complexes between the LKB1 tumor suppressor, STRAD alpha/beta and MO25 alpha/beta are upstream kinases in the AMP-activated protein kinase cascade. *J Biol* 2003, **2**:28.
- Zequiraj E, Filippi BM, Deak M, Alessi DR, van Aalten DMF: Structure of the LKB1-STRAD-MO25 complex reveals an allosteric mechanism of kinase activation. *Science* 2009, **326**:1707-1711.
- Dorfman J, Macara IG: STRADalpha regulates LKB1 localization by blocking access to importin-alpha, and by association with Crm1 and exportin-7. *Mol Biol Cell* 2008, **19**:1614-1626.
- Tiainen M, Vaahtomeri K, Ylikorkala A, Mäkelä TP: Growth arrest by the LKB1 tumor suppressor: induction of p21(WAF1/CIP1). *Hum Mol Genet* 2002, **11**:1497-1504.
- Mirouse V, Billaud M: The LKB1/AMPK polarity pathway. *FEBS Lett* 2011, **585**:981-985.

35. Orlova KA, Parker WE, Heuer GG, Tsai V, Yoon J, Baybis M, Fenning RS, Strauss K, Crino PB: **STRADa deficiency results in aberrant mTORC1 signaling during corticogenesis in humans and mice.** *J Clin Invest* 2010, **120**:1591–1602.
36. Parker WE, Orlova KA, Parker WH, Birnbaum JF, Krymskaya VP, Goncharov DA, Baybis M, Helfferich J, Okochi K, Strauss KA, Crino PB: **Rapamycin prevents seizures after depletion of STRADA in a rare neurodevelopmental disorder.** *Sci Transl Med* 2013, **5**:182ra53–182ra53.
37. Martin SG, St Johnston D: **A role for Drosophila LKB1 in anterior-posterior axis formation and epithelial polarity.** *Nature* 2003, **421**:379–384.
38. Watts JL, Morton DG, Bestman J, Kempthues KJ: **The C. elegans par-4 gene encodes a putative serine-threonine kinase required for establishing embryonic asymmetry.** *Development* 2000, **127**:1467–1475.
39. Smith DP, Spicer J, Smith A, Swift S, Ashworth A: **The mouse Peutz-Jeghers syndrome gene Lkb1 encodes a nuclear protein kinase.** *Hum Mol Genet* 1999, **8**:1479–1485.
40. Boudeau J, Deak M, Lawlor MA, Morrice NA, Alessi DR: **Heat-shock protein 90 and Cdc37 interact with LKB1 and regulate its stability.** *Biochem J* 2003, **370**:849–857.
41. Nony P, Gaude H, Rossel M, Fournier L, Rouault JP, Billaud M: **Stability of the Peutz-Jeghers syndrome kinase LKB1 requires its binding to the molecular chaperones Hsp90/Cdc37.** *Oncogene* 2003, **22**:9165–9175.
42. Gaude H, Aznar N, Delay A, Bres A, Buchet-Poyau K, Caillat C, Vigouroux A, Rogon C, Woods A, Vanacker JM, Höhfeld J, Perret C, Meyer P, Billaud M, Forcet C: **Molecular chaperone complexes with antagonizing activities regulate stability and activity of the tumor suppressor LKB1.** *Oncogene* 2012, **31**:1582–1591.
43. Mozaffari M, Hoogeveen-Westerveld M, Kwiatkowski D, Sampson J, Ekong R, Povey S, den Dunnen JT, van den Ouweland A, Halley D, Nellist M: **Identification of a region required for TSC1 stability by functional analysis of TSC1 missense mutations found in individuals with tuberous sclerosis complex.** *BMC Med Genet* 2009, **10**:88.
44. Yang Z, Wang L: **An autoregulatory feedback loop between Mdm2 and SHP that fine tunes Mdm2 and SHP stability.** *FEBS Lett* 2012, **586**:1135–1140.
45. Boudeau J, Miranda-Saavedra D, Barton GJ, Alessi DR: **Emerging roles of pseudokinases.** *Trends Cell Biol* 2006, **16**:443–452.
46. Ronquist F, Huelsenbeck JP: **MrBayes 3: Bayesian phylogenetic inference under mixed models.** *Bioinformatics* 2003, **19**:1572–1574.
47. Altekar G, Dwarkadas S, Huelsenbeck JP, Ronquist F: **Parallel Metropolis coupled Markov chain Monte Carlo for Bayesian phylogenetic inference.** *Bioinformatics* 2004, **20**:407–415.
48. Kaech S, Banker G: **Culturing hippocampal neurons.** *Nat Protoc* 2006, **1**:2406–2415.

doi:10.1186/1749-8104-9-5

Cite this article as: Veleva-Rotse *et al.*: STRAD pseudokinases regulate axogenesis and LKB1 stability. *Neural Development* 2014 **9**:5.

Submit your next manuscript to BioMed Central and take full advantage of:

- Convenient online submission
- Thorough peer review
- No space constraints or color figure charges
- Immediate publication on acceptance
- Inclusion in PubMed, CAS, Scopus and Google Scholar
- Research which is freely available for redistribution

Submit your manuscript at
www.biomedcentral.com/submit

