



HHS Public Access

Author manuscript

Nat Commun. Author manuscript; available in PMC 2014 July 01.

Published in final edited form as:

Nat Commun. 2014 ; 5: 3361. doi:10.1038/ncomms4361.

Genome-wide Transcriptome Profiling of Homologous Recombination DNA Repair

Guang Peng^{1,2,§}, Curtis Chun-Jen Lin^{3,§}, Wei Mo^{3,§}, Hui Dai³, Yun-Yong Park³, Soo-Mi Kim³, Yang Peng³, Qianxing Mo⁴, Stefan Siwko³, Ruozhen Hu³, Ju-Seog Lee³, Bryan Hennessy⁵, Samir Hanash¹, Gordon B. Mills³, and Shiao-Yih Lin^{3,*}

¹Department of Clinical Cancer Prevention, Unit 1013, The University of Texas MD Anderson Cancer Center, Houston, TX 77030, USA ²Department of Oncology, Tongji Hospital, Tongji Medical College, The University of Huazhong Science & Technology, Wuhan, Hubei Province 430022, P.R. China ³Department of Systems Biology, Unit 950, The University of Texas MD Anderson Cancer Center, Houston, TX 77054, USA ⁴Division of Biostatistics, Dan L. Duncan Cancer Center, Baylor College of Medicine, Houston, TX 77030, USA ⁵Centre for Systems Medicine, Royal College of Surgeons in Ireland, 123 St. Stephen's Green, Dublin 2, Ireland

Abstract

Homologous recombination (HR) repair deficiency predisposes to cancer development, but also sensitizes cancer cells to DNA-damage-inducing therapeutics. Here we identify an HR-defect (HRD) gene signature, which can be used to functionally assess HR repair status without interrogating individual genetic alterations in cells. By using this HRD gene signature as a functional network analysis tool, we discover that simultaneous loss of two major tumor suppressors *BRCA1* and *PTEN* extensively rewire the HR repair-deficient phenotype, which is found in cells with defects in either *BRCA1* or *PTEN* alone. Moreover, the HRD gene signature serves as an effective drug discovery platform to identify agents targeting HR repair as potential chemo/radio-sensitizers. More importantly, this HRD gene signature is able to predict clinical outcomes across multiple cancer lineages. Our findings, therefore, provide a molecular profile of HR repair to assess its status at a functional network level, which can provide both biological insights and have clinical implications in cancer.

Users may view, print, copy, and download text and data-mine the content in such documents, for the purposes of academic research, subject always to the full Conditions of use:http://www.nature.com/authors/editorial_policies/license.html#terms

*To whom correspondence should be addressed. sylin@mdanderson.org (Tel 713-563-4217, Fax 713-563-4235).

§These authors contributed equally to this work

Author Contributions

S.-Y. L. conceived the project and designed the experiments. G. P. designed the experiments and wrote the manuscript. G. P. performed the experimental studies with the technical and analytical assistance from H. D., Y.-Y.P., S.-M. K., Y.P., S. S., R.H. on the various cultured cell experiments, microarray performance and analyses and western blotting. C.C. L and W.M. performed critical experiments to further strengthen the work and W.M. also contributed to the preparation and the submission of the manuscript. J.S. L introduced the microarray technique to the team and supervised the transcriptome analysis. S. H. contributed to the proteomics data. B.H. and G.B.M provided the ovarian cancer data. Q. M. analyzed the ovarian cancer data.

Competing financial interests: The authors declare no competing financial interests.

Accession codes:

The microarray data have been deposited in the Gene Expression Omnibus Database under accession code GSE54269.

Introduction

Genomic instability is a hallmark of cancer cells¹. To maintain genomic stability and ensure high-fidelity transmission of genetic information, cells have evolved a complex mechanism to repair DNA double-strand breaks (DSBs), the most deleterious DNA lesions, in an error-free manner through homologous recombination (HR)^{2,3}. HR-mediated DNA repair deficiency predisposes to cancer development⁴, but also sensitizes cancer cells to DNA-damage-inducing therapy such as radiation therapy and DNA-damage-based chemotherapy⁵.

HR repair involves a variety of proteins that detect, signal, and repair DSBs^{2,3}. It is coordinated by many cellular responses, such as cell cycle checkpoint, transcriptional activation, epigenetic regulation, and various post-translational modifications^{6,7}. The number of genes known to be involved in HR repair is constantly expanding^{8,9}. Therefore, it would be virtually impossible to use conventional single-gene approaches to identify every possible genetic alteration that might lead to HR-deficiency. In this study, we implemented a transcriptional profiling-based approach to systematically identify common molecular changes associated with defective HR repair and generated an HRD gene signature. We further validated that the HRD gene signature predicted HR status and sensitivity to PARP inhibitors in human cancer cells. More importantly, we were able to use the HRD gene signature to identify mechanisms underlying resistance to PARP inhibitors and confirm rational combination therapies predicted to synergize with PARP inhibitors. We also explored the clinical relevance of the HRD gene signature in multiple independent patient datasets and found that it correlated with overall survival across tumor lineages. In summary, we identify a gene signature, which can be used both to predict defective HR repair and clinical outcome in cancer patients.

Results

Identification of an HRD Gene Signature

To obtain a comprehensive molecular understanding of HR repair process, rather than taking a single gene approach to analyze HR repair in cells, we utilized a genome-wide gene expression profiling approach to systematically measure the cellular transcriptome reprogramming in HR-deficient cells. We used MCF-10A cells, an immortal human mammary epithelial cell line of nonmalignant origin, to establish isogenic cell lines with deficiency individually in three independent HR repair genes: *BRCA1*, *RAD51*, and *BRIT1* (*MCPHI*). These genes were chosen due to their regulation of HR repair at different steps via distinct mechanisms. *BRCA1* plays a critical role in DNA damage response signaling and the initial step of HR repair, DSB end resection^{1,10}. *RAD51* is the key recombinase enzyme for homologous sequence searching and recombination¹¹. *BRIT1* mediates HR repair, likely through regulating chromatin structure^{12,13}. As expected, the cell lines with deficiency in *BRCA1*, *RAD51*, or *BRIT1* had significantly reduced HR repair efficiency (Supplementary Fig. 1a,b). Importantly, all the knockdown cell lines exhibited cell cycle distribution similar to that of the control cells (Supplementary Fig. 1c), which excluded effects caused by changes in cell cycle progression.

We then used microarray analysis to search for genes differentially expressed between control and HR-deficient cell lines. We selected a set of 230 genes (Supplementary Table 1) whose expression differed by a factor of 2 or more ($P < 0.001$) between each of the HR-deficient cell lines and parental cells (Fig. 1a) and designated the gene set as the HRD gene signature. As expected, a high proportion of genes in the HRD gene signature were involved in cell cycle regulation, DNA replication, and DNA recombination and repair pathways (Supplementary Fig. 2). In addition, a high proportion of genes in the HRD gene signature were in canonical pathways involved in mismatch repair, the function of BRCA1 and CHK proteins in DNA damage response, and cell cycle checkpoint control (Supplementary Fig. 2). Importantly, expression of these genes is coordinately up-regulated or down-regulated in cell lines with HR-deficiency induced by depletion of independent HR genes that have different mechanisms of action (Fig. 1a). For example, the expression levels of three DSB end resection enzymes, *BLM*, *DNA2*, and *EXO1*, were all markedly reduced in HR-deficient cells, indicating DSB end resection efficiency would be expected to be correspondingly reduced by transcriptional regulation of resection enzymes. This observation showed that HR-deficiency, independent of the specific mediator, leads to similar transcriptional changes. To exclude the possibility that the HRD gene signature is the result of cellular transcriptome reprogramming during stable selection, we further conducted transient transfection of *BRCA1* siRNA in MCF10A cells and performed microarray analysis. Using supervised clustering analysis, we demonstrated that knocking down *BRCA1* by siRNA in MCF10A cells also led to the HRD gene signature (Supplementary Fig. 3). All these findings strongly suggest that the molecular components involved in HR repair are interconnected and increases the likelihood that the HRD gene signature will capture defects in HR repair independent of the underlying mediator. Thus, it is possible that the HRD gene signature could allow for interrogation of the status of HR repair deficiency induced by multiple different mechanisms.

The HRD Gene Signature Predicts HR-deficiency in cells

To test this possibility, we first sought to determine whether the HRD gene signature was generalizable and able to predict HR-deficiency induced by deficiency of independent HR-related genes. We generated gene expression profiles from isogenic MCF-10A cells with deficiency of various known key DNA damage response proteins, including *ATM*, *ATR*, *CHK1*, *CHK2*, or *53BP1*⁶ by both shRNA stable and siRNA transient knockdown. Using supervised clustering analysis, *ATM*-, *ATR*-, *CHK1*- and *CHK2*-deficient cells formed a cluster with the HRD gene signature (Fig. 1b and Supplementary Fig. 4a,b). In contrast, absence of the HRD gene signature was found in *53BP1*-deficient cells (Fig. 1b and Supplementary Fig. 4a,c). These observations are consistent with the well-established roles of the ATM-CHK2 and ATR-CHK1 pathways in regulating HR repair and the notion that 53BP1 functions as a negative regulator of DSB resection and HR repair. In order to demonstrate that such observations are not specific to MCF-10A cells, we established transient and stable *CHK1* knockdown U2OS cells, which is a human osteosarcoma cell line and commonly used in the studies of DNA damage response and repair. *CHK1*-deficient U2OS cells exhibited the same pattern of gene expression changes as those in the HRD gene signature derived from MCF-10A cells (Fig. 1c and Supplementary Fig. 4b,d). In addition, we generated a stable *BRCA2*-deficient MCF-10A cell line, which also exhibited the HRD

gene signature (Supplementary Fig. 5a). Consistent with this finding, two human breast cancer cell lines with *BRCA2* mutations HCC1428 and HCC1369 showed the HRD signature pattern (Supplementary Fig. 5b). Collectively, these data demonstrated that the HRD gene signature differentiates HR-deficient cells from HR-intact cells and suggested that the HRD gene signature may represent a common molecular feature among different mechanisms or cell origins of generating HR-deficiency.

To further examine whether the HRD gene signature is functionally linked to HR repair-deficient status in cells, we tested whether it could determine genes with previously unknown function in HR repair are or are not involved in this process. We used zinc finger protein 668 (*ZNF668*) as an example. *ZNF668* was previously identified by genome-wide sequencing analysis as a frequently mutated gene in breast cancer^{14,15}. However, molecular mechanisms underlying its tumor suppression function remains to be elusive. We conducted microarray analysis of *ZNF668*-deficient cells and used supervised clustering to assess whether *ZNF668*-deficient cells exhibited the HRD gene signature. Although individual HR repair factors such as *BRCA1/2*, *RAD51*, *BRIT1*, *ATM*, *ATR*, *CHK1*, and *CHK2* were not identified as top candidate genes based on expression changes in *ZNF668*-knockdown cells, these cells clearly exhibited the HRD gene signature (Fig. 1d). HR repair assay showed that *ZNF668* knockdown significantly impaired HR repair efficiency (Fig. 1e), without inducing any apparent difference in cell cycle distribution compared to control cells (Fig. 1e). We further knocked down *ZNF668* in MDA-MB-436 breast cancer cells, which have a relative high expression level of *ZNF668* compared to other breast cancer cell lines. We found that *ZNF668* depletion significantly reduced *RAD51* foci formation after IR treatment, without affecting cell cycle distribution (Supplementary Fig. 6a,b). In addition, we reconstituted *ZNF668* expression in a breast cancer cell line EVSAT, which contains a *ZNF668* nonsense mutation. We found that the restored expression of *ZNF668* remarkably increased IR-induced *RAD51* foci formation compared to control cells reconstituted with an empty vector with no apparent effect on cell cycle distribution (Supplementary Fig. 6c,d). These results indicated that the HRD gene signature can functionally link gene expression patterns with HR-deficiency not only in our genetic engineered model systems but also various cancer cell lines, providing an opportunity to identify unexpected key players in HR repair.

The HRD Gene Signature Predicts PARP Inhibitor Sensitivity

Poly(ADP-ribose) polymerase (PARP) inhibitors are recently identified targeted therapeutic drugs, which specifically kill HR-repair deficient cells via a synthetic lethality interaction^{16,17}. As expected, *BRCA1*-, *RAD51*- and *BRIT1*-deficient cells exhibited greatly increased cellular sensitivity to PARP inhibitor olaparib (Supplementary Fig. 7a). Thus, we reasoned that if the HRD gene signature is functionally linked to HR-deficiency, it may serve as a powerful tool to predict the sensitivity of human cancer cells with diverse genetic backgrounds to PARP inhibitors. To test this possibility, we used two cell-line panels: National Cancer Institute 60 (NCI60)¹⁸ and a collection of 51 breast cancer cell lines¹⁹, which consist of cell lines from diverse human cancers that have been well characterized genetically and molecularly. Gene expression profiles of NCI60 (Supplementary Fig. 7b) and breast cancer 51 cell lines (Supplementary Fig. 7c) were clustered hierarchically into two groups on the basis of their similarity to the HRD gene signature. For prostate, renal,

lung, ovarian, and breast cancers, we selected HR-deficient and HR-intact cell lines as predicted by the HRD gene signature and determined HR repair efficiency using HR repair assay. Importantly, cell lines with the HRD gene signature showed reduced HR repair efficiency compared to their counterparts without the signature in each cancer type (Fig. 2a). Consistent with the results from the HR repair assay, cell lines with the HRD gene signature were more sensitive to PARP inhibitors olaparib (Fig. 2b) or rucaparib (Fig. 2c) treatment than cell lines with intact HR repair. It is very likely that PARP inhibitors will also be used in combination with standard DNA damaging agents in clinic. We, therefore, further tested whether cell lines with the HRD gene signature would be more sensitive to the treatment combining PARP inhibitors with temozolomide, a standard chemotherapy regimen. As shown in Supplementary Fig. 7d, consistent with the results from PARP inhibitor monotherapy, the HR-deficient cell line showed enhanced sensitivity compared to the HR-intact cell line.

Having determined the association between the HRD gene signature and HR repair capacity in cancer cell lines, we then asked whether the changes of the HRD gene signature at the transcriptional levels are correlated with their changes at the protein level in cancer cells. To answer this question, we obtained the systematic proteomic profiling data through a mass spectrometry analysis from breast cancer cell lines, which are identified as HR-deficient or HR-intact cell lines by gene signature analysis. We then compared the difference of protein expression levels between HR-deficient and HR-intact cell lines (Supplementary Table 2). The change at the protein level is closely correlated with the changes at the transcriptional level. In Supplementary Fig. 8, we further showed that similar functional pathways and networks were identified from proteomic data analysis compared to the microarray data analysis (Supplementary Fig. 2).

Together, these data suggest that gene expression profile analysis may permit functional identification of HR-deficiency without the need for identification of the specific genetic or epigenetic aberrations in the HR repair network and, more importantly, that the HRD gene signature may be used to predict the sensitivity of tumor cells to targeted therapeutics for HR deficiency such as PARP inhibitors.

Reversal of HR-Deficiency in *BRCA1*-Depleted Cells

Surprisingly, our analyses showed that breast cancer cell line HCC1937, which has *BRCA1* mutation, did not exhibit gene expression patterns similar to the HRD gene signature, did not exhibit HR repair deficiency, and did not exhibit increased sensitivity to PARP inhibitors compared to MCF-7 cells with wild-type *BRCA1* (Fig. 2a–c). We suspect that due to impaired DNA repair, additional genetic alterations may accumulate in these *BRCA1*-mutated cells that, in turn, restore HR repair deficiency. A recent study has reported that *PTEN* is frequently mutated in *BRCA1*-deficient tumors, which is indeed mutated in HCC1937²⁰. In light of these observations, we ask whether *PTEN* loss might affect HR repair in *BRCA1*-deficient cells.

We generated *BRCA1* knockdown, *PTEN* knockdown, and *BRCA1-PTEN* double knockdown cells in the MCF-10A background and subjected these cell lines to microarray analysis. Expression of these genes was significantly reduced in the knockdown cells, and

deficiency of these genes did not affect the cell cycle distribution under normal culture conditions (Supplementary Fig. 9). Interestingly, cells with *BRCA1* deficiency or *PTEN* deficiency formed a cluster with the HRD gene signature. However, *BRCA1-PTEN* double knockdown cells, like HCC1937, had a gene signature similar to that of control cells (Fig. 3a), suggesting that co-concurrent loss of *PTEN* and *BRCA1* could potentially restore the HR repair efficiency in cells with defection of either *BRCA1* or *PTEN* gene alone.

To further test this possibility, we performed HR repair assays in the knockdown cell lines. As expected, *BRCA1-PTEN* double knockdown cells showed an increase in HR repair efficiency (or restored HR repair efficiency) compared with *BRCA1* or *PTEN* single-gene-knockdown cells (Fig. 3b). We then tested the sensitivity of these cells to PARP inhibitor. *BRCA1* and *PTEN* deficiency alone sensitized cells to olaparib (Fig. 3c), consistent with previously reported functions of BRCA1 and PTEN in regulating HR repair^{16,17,21,22}. However, as expected, *BRCA1-PTEN* double knockdown did not sensitize cells to PARP inhibitor treatment and indeed were indistinguishable from control cells. Collectively, these data strongly support the concept that additional genetic alterations such as loss of *PTEN* can reverse HR-deficiency in *BRCA1*-deficient cells, suggesting that analysis of genetic alterations in individual genes involved in HR repair may not reflect the overall functional status of the HR repair network. In contrast, the HRD signature can provide a functional assessment of HR repair status that integrates inputs from multiple upstream mediators.

Next, we sought to investigate the molecular mechanism underlying the enhanced HR repair in *BRCA1-PTEN* double knockdown cells. We identified 26 genes in the HRD gene signature that had the greatest differences in expression between *BRCA1-PTEN* double knockdown cells and single-gene-knockdown cells, using a scoring system described in Methods (Fig. 3d). Among these candidate genes, we focused on kinases as they represent the most druggable targets for chemical modulation of the HR repair network. We found that expression level of the TTK protein kinase, that we initially cloned²³, was down-regulated in *PTEN* or *BRCA1* single-gene-knockdown cells. However, *TTK* expression level was increased in *BRCA1-PTEN* double knockdown cells (Fig. 3d). As co-mutations of *BRCA1* and *PTEN* are frequently observed in basal-like breast cancer²⁰, we analyzed *TTK* expression in this breast cancer subtype. We found that *TTK* expression was significantly enriched in basal-like breast cancer compared to other breast cancer subtypes (Fig. 3e). In addition, we found that the basal-like breast cancer cell line, HCC1937, which contains both *BRCA1* and *PTEN* mutations, had a higher *TTK* expression level than other breast cancer cell lines (Supplementary Fig. 10a). *TTK* is a dual-specificity protein kinase that can phosphorylate tyrosine, serine, and threonine²³. It is associated with cell proliferation and regulates chromosome alignment and segregation during mitosis^{23,24}. However, it remains unknown whether *TTK* plays a direct role in DNA repair. Thus, we tested whether *TTK* regulates HR repair. As we expected, over-expression of *TTK* increased HR repair (Fig. 3f). These results suggested that increased expression of *TTK* may contribute to increased HR repair efficiency in *BRCA1-PTEN* double knockdown cells. Moreover, *TTK* inhibitor AZ3146 enhanced olaparib-induced apoptosis in HCC1937 cells (Supplementary Fig. 10b). Altogether, these data demonstrated that concurrent loss of *PTEN* and *BRCA1* might rewire the HR repair network through regulating the expression of key genes such as *TTK*, which

may be responsible for PARP inhibitor resistance observed in clinical trials in basal-like breast cancer or TNBC carrying a high frequency of dysfunctional *BRCA1* and *PTEN*²⁰.

Identification of PARP-Inhibitor-Synergizing Agents

Given that the HRD gene signature can functionally link transcriptional changes to HR repair deficiency, we asked whether we could identify agents that would induce the HRD gene signature and thereby induce sensitivity of cancer cells to DNA-damage inducing treatment such as PARP inhibitors. To this end, we compared data from the Connectivity Map with the HRD gene signature. The Connectivity Map is a public database with a large number of drug-associated gene expression profiles²⁵. We searched the database for agents that caused gene expression changes overlapping with the HRD gene signature and therefore might be expected to induce sensitivity to PARP inhibitors. Remarkably, we found that PI3K inhibitor LY-294002, mTOR inhibitor rapamycin, HDAC inhibitor vorinostat, and Hsp90 inhibitor AUY922 were ranked near the top of the Connectivity Map list in terms of inducing the HRD-gene-signature-like gene expression profiles.

We first used HR repair assay described above to directly determine the effects of LY-294002 and rapamycin on HR repair. Previous studies have shown that PI3K inhibitor and rapamycin treatment disrupt cell growth signaling and thereby lead to cell cycle arrest at G1 phase²⁶. To exclude any indirect effect of cell cycle distribution on HR repair, we used contact inhibition (Supplementary Fig. 11a) and aphidicolin (Supplementary Fig. 11b), a DNA polymerase inhibitor, to block replication and assure same cell cycle distribution in the control cells and the cells treated with LY-294002 or rapamycin. As expected, LY-294002 and rapamycin significantly reduced HR repair efficiency in both conditions (Fig. 4a,b). These data supported the notion that LY-294002 and rapamycin indeed inhibit HR repair. To further assess whether these drugs could sensitize cancer cells to PARP inhibitors, we selected cancer cell lines of a variety of different cancer types that did not exhibit the HRD gene signature. The degree of synergy of drug combination in a fixed molar ratio was calculated with the combination index (CI) algorithm as previously described²⁷. In general, $CI < 1$ indicates synergy and $CI > 1$ indicates antagonism. In the cell lines we tested, the combination of LY-294002 or rapamycin synergized with PARP inhibitor olaparib (Fig. 4c, Supplementary Fig. 11c) or rucaparib (Fig. 4d, Supplementary Fig. 11d). In addition, rapamycin combined with PARP inhibitors showed an even larger synergistic enhancement of growth inhibition as compared to LY-294002 with PARP inhibitors in the majority of cell lines tested. Consistent with these findings, recent reports have used different approaches to discover that PI3K inhibitors in combination with PARP inhibitor reduced tumor burden in a *BRCA1*-deficient mouse model and sensitized *BRCA*-proficient tumors by impairing *BRCA1/2* expression^{28,29}. Furthermore, we have validated the synergistic effect of HDAC inhibitor vorinostat (Supplementary Fig. 11e) or Hsp90 inhibitor AUY922 (Supplementary Fig. 11f) on PARP inhibitor treatment in HCC1937 cells. We found a relatively higher synergy from AUY922 combinations as compared with vorinostat combinations. Hence, using the HRD gene signature as a drug discovery framework, we not only correctly predicted the previously reported therapeutic effect from the combination of a PI3K inhibitor^{28,29} or Hsp90 inhibitor³⁰ with a PARP inhibitor, but also discovered that an mTOR inhibitor, or an HDAC inhibitor rendered cells sensitive to PARP inhibitor treatment and

could be used to develop effective combination therapies that would benefit patients. In addition, the use of the HRD gene signature to efficiently identify drugs that inhibit HR repair provided additional strong evidence that the HRD gene signature is indeed functionally linked with HR-deficiency.

Prediction of Clinical Outcome in Multiple Human Cancers

In the next step, we used patient tumor samples to test whether the HRD gene signature correlates with clinical outcomes. We analyzed four independent cancer datasets including breast, ovarian and lung cancers. We clustered patients hierarchically into two groups on the basis of similarity of gene expression profiles to the HRD gene signature. Among patients with breast and lung cancers, those with the HRD gene signature had better overall survival than those without the signature (Fig. 5). In addition, we generated microarray data from 87 ovarian cancer patients, and these data showed results consistent with those in the breast and lung cancer datasets (Supplementary Fig. 12). As we mentioned earlier, HR-deficiency sensitizes cancer cells to DNA damaging inducing therapy, and thus the above observations may indicate the ability of the HRD gene signature to predict clinical outcomes as a result of different DNA-damage-related treatments.

Discussion

Cells have evolved a complex DNA damage repair system, HR repair, which plays a fundamental role in maintaining genomic integrity and preventing tumorigenesis. Given the immense complexity of HR repair, identifying dysfunctional HR repair in human cancers is an enormous challenge. Instead of examining individual genes involved in HR repair, in this study, we used gene expression profiling to provide a global network view of the consequences of HR-deficiency. Our data suggest that HR repair components are not independent. Instead, they form a network that is responsible for the integrated HR repair capacity of cells. Consistent with our findings from transcriptomic data, a recent quantitative proteomics profiling of poly (ADP-ribose) (pADPr)-associated protein complexes revealed complexity of the DNA damage response network in the context of poly(ADP-ribose)ylation^{31,32}. Interestingly, many genes in the HRD gene signature are potential pADPr binding proteins identified from this study³². It is possible that many of these pADPr-binding proteins may exert a fine-tuned control of HR repair process, which may provide an additional rationale to use PARP inhibitors as adjunct to chemo/radio-therapy. Given the complexity of the HR repair network, the HRD gene signature allows interrogation of the status of HR repair by simultaneously considering hundreds of genes and thereby allows identification of HR-deficiency in a given cellular state independent of underlying mechanism.

The HR repair network is not static but rather dynamic during tumor evolution, which can be extensively rewired during tumor progression. As shown in our current study and previous reports, *BRCA1/2*-mutated tumors may not necessarily be HR-deficient because mutations in other genes can reverse HR-deficiency through loss of *PTEN* or *53BP1* or by reversion of *BRCA1/2* mutations³³⁻³⁶. As shown in our study, the combined effects of co-mutations/co-genetic alterations in cancer cells could be more determinative than the effects

of individual alterations in terms of the functional behavior of cancer cells. The phenotypes may not be the simple sum of each genetic change in cancer cells. With the advent of next-generation sequencing, we may be able to catalogue all the individual genetic alterations in a given tumor sample. However, to decipher the overall impact of these genetic alterations will likely require analyses of functional networks, which are perturbed by these genetic alterations from a systems biology level, instead of dissection of the functions of individual genetic alterations independently.

In addition to biological insights, our data suggest that the HRD gene signature can be used as a potential prognostic tool for cancer patient outcome. Furthermore, we explored the potential therapeutic implications of the HRD gene signature. One of the recent most exciting therapeutic breakthroughs in cancer is the identification of a synthetic lethal interaction between HR-deficiency and PARP inhibitors^{16,17}. As a targeted therapeutic, the implementation of PARP inhibitors into patient management thus largely depends on accurate identification of patients with HR-deficient tumors as well as on approaches to prevent the emergence of resistance. The advantage of this HRD gene signature as a molecular assessment of HR deficiency without interrogating individual genetic alterations in cancer may allow us to develop practical and effective companion diagnostics able to robustly identify patients likely to benefit from PARP inhibitors beyond those with *BRCA1/2* defects.

Recent clinical trials of PARP inhibitors have shown poor response rate^{37–39} in *BRCA1/2*-deficient cancer patients, suggesting that only a portion of patients with *BRCA1/2* mutants respond and unfortunately responses are usually short-lived. In our study, analysis of the HR repair network by gene expression profiling allowed us to identify chemicals targeting HR repair process. Our findings, together with the aforementioned recent reports confirming the therapeutic benefit of combining a PARP inhibitor with a PI3K inhibitor or an Hsp90 inhibitor³⁰, suggest that combining TTK, mTOR, PI3K, HDAC, or Hsp90 inhibitors with PARP inhibitors could also be promising approaches to improve responses to PARP inhibitor treatment, or more generally to DNA damage-inducing treatment such as radiation therapy and chemotherapy with cisplatin. It is worthy of noting that a recent study showed that PARP-1 inhibition leads to activation of mTORC1 complex due to reduced AMPK activity⁴⁰. This result together with our findings strongly suggest that the therapeutic benefit of combining PARP inhibitor with mTOR inhibitor may be mediated by targeting both HR repair pathway and the PARP inhibitor-induced suppression of AMPK pathway.

Methods

Cell Culture and reagents

U2OS cells (American Type Culture Collection, ATCC) were maintained in McCoy's 5A medium supplemented with 10% fetal bovine serum. MCF-10A cells (ATCC) were cultured in mammary epithelial growth medium containing insulin, hydrocortisone, epidermal growth factor, and bovine pituitary extract (Clonetics). EVSAT cells (Creative Bioarray, NY, USA) were cultured in MEM containing 10% fetal bovine serum. MDA-MB-436 cells (ATCC) were maintained in DMEM medium supplemented with 10% fetal bovine serum. PC3, DU145, ACHN, 786-0, H226, H522, OVCAR-3, OVCAR-8, and MCF7 cells were all

obtained from ATCC and maintained according to ATCC instructions. BRCA1 (D-9) monoclonal and TTK polyclonal antibodies were purchased from Santa Cruz (SC-6954, 1:1000) and Cell Signaling (#3255, 1:1000), respectively. ZNF668 antibodies were generated as previously described⁴¹. Uncropped scans of the most important western blots are listed as supplementary figures in Supplementary Figure 13. PI3K inhibitor LY-294002 and mTOR inhibitor rapamycin were purchased from Sigma. PARP inhibitors olaparib and rucaparib, HDAC inhibitor vorinostat and Hsp90 inhibitor AUY922 were from Selleckchem. TTK inhibitor AZ3146 was purchased from R&D Systems.

Lentiviral Infection and Plasmid siRNA Transfection

MCF-10A cells were infected with individual MISSION lentiviral particles (Sigma) targeting *BRCA1*, *RAD51*, *BRIT1*, *PTEN*, *ATM*, *ATR*, *53BP1*, *CHK1*, *CHK2* or *BRCA2* according to the manufacturer's instructions. After infection, cells with stable knockdown were selected by using puromycin (1 µg/mL) for 10 to 15 days. For transient transfection, *TTK* or *BRCA1* was knocked down using SMARTpool siRNAs (Dharmacon) and *ZNF668* knocked down by the ON-TARGET-plus *ZNF668* siRNA (Dharmacon). *TTK* cDNA was purchased from Harvard Plasmid Core and subcloned using Gateway technology (Invitrogen). In U2OS cells, siRNAs were transfected with oligofectamine (Invitrogen), and plasmid was transfected with FuGENE 6 (Roche). In MCF-10A cells, transfection of plasmids was performed with lipofectamine 2000 (Invitrogen). All shRNA/siRNA sequences are described in Supplementary Table 3.

Microarray Analysis

Microarray analysis was conducted as previously described⁴². Total RNA was extracted using a mirVana RNA isolation labeling kit (Ambion). We used 500 ng of total RNA for labeling and hybridization based on the manufacturer's procedures (Illumina). Sentrix Human6 v2 Expression Bead Chip and HumanHT-12 v4 Expression Beadchip were used. The bead chips were scanned with a BeadArray Reader (Illumina). After normalization with the Linear Models for Microarray Data (LIMMA) package in the R language environment and log₂-transformation, array data were subjected to further analysis. Primary microarray data are available in the National Center for Biotechnology Information Gene Expression Omnibus public database (Illumina platform, GEO accession number GSE54269). The random-variance *t* test was used to identify genes differentially expressed between the two classes that were compared using BRB-ArrayTools⁴³. The random-variance *t* test is an improvement over the standard separate *t*-test as it allows information to be shared among genes about within-class variation without assuming that all genes have the same variance. Gene expression differences were considered significant if $P < 0.001$. Gene set enrichment analysis was performed using Ingenuity Pathway Program (version 12710793). To define the genes that most significantly changed in *BRCA1* (a), *PTEN* (b), and double knockdown cells (c), a score was signed to each gene using the following formula after their expression levels were compared with expression levels in control cells as described in previous paper⁴⁴: $a/c + b/c - 1.2$ for genes overexpressed in c; $c/a + c/b - 1.2$ for genes under-expressed in c.

HR Repair Analysis

A Schematic diagram of HR repair assay is shown in Supplementary Fig. 1a. DR-GFP, pCAGGS, and pCBASce plasmids were kindly provided by Dr. Maria Jasin (Memorial Sloan-Kettering Cancer Center, New York, NY). U2OS cells containing a single copy of the HR repair reporter substrate DR-GFP in a random locus were generated as previously described¹². GFP-expressing plasmid (pEGFP-C1) was used for transfection efficiency control. Twenty-four hours after *ZNF668* siRNA, *TTK* plasmid, or *BRCA1* siRNA transfection, cells were re-seeded; the next day, cells were transfected with pCBASce plasmids. For cell lines that do not stably contain the DR-GFP plasmid, 1×10^6 cells were electroporated with 12 μg of DR-GFP and 12 μg of pCBASce plasmids at 270V, 975 μF using a BioRad genepulsar II⁴⁵. 48 to 72 hours later, flow cytometry analysis was performed to detect GFP-positive cells using a FACScalibur apparatus with CellQuest software (Becton Dickinson, San Jose, CA). Unless otherwise specified, results were mean + SD from three independent experiments.

Flow Cytometry Analysis

Cells were fixed with 70% cold ethanol (-20°C) overnight and then resuspended in staining solution (10 $\mu\text{g}/\text{mL}$ propidium iodide, 20 $\mu\text{g}/\text{mL}$ RNAase A, and 0.05% Triton X-100). Cell cycle analysis was performed at the MD Anderson Cancer Center Flow Cytometry and Cellular Imaging Facility. Any given analyses were repeated at least three times.

Colony formation Assay

Cells were seeded at low density and treated with indicated concentrations of drugs the next day; cells were then left for 2 weeks to allow colonies to form. Colonies were stained with staining solution (0.25% crystal violet, 25% methanol in $1 \times \text{PBS}$) for colony visualization. Colonies were counted manually (colonies containing 50 or more cells were counted) or digitally using ImageJ software with customized parameters optimized based on three preliminary manual counts or blindly chosen. Unless otherwise stated, each value is relative to the value in the cells treated with vehicle control. Results are shown as mean + SD from three independent experiments.

Cell Proliferation Assay

Cell proliferation was measured by MTT (Sigma) reduction. To test the cell proliferation rate, cells were seeded in 96-well plates in a total volume of 100 μL in triplicate in each experiment. The next day, cells were treated with indicated concentrations of drugs. Five days later, 20 μL of MTT substrate (2 mg/mL) was added to each well and incubated with cells for 3 hr. Then the culture medium was removed, and 100 μL of dimethyl sulfoxide was added. Plates were read at 490 nm and 650 nm (background) in a microplate reader (Molecular Devices). After subtraction of background, the cell viability was calculated as fold change relative to control cells. The OD values were analyzed with Graphpad Prism 6.0 software. Each value is relative to the value in the cells treated with vehicle control. Results are shown as mean \pm SEM from three independent experiments.

Drug combination studies

Drug combination treatments results were obtained from MTT assays of at least three replications and the combination index (CI) was calculated by CompuSyn software using the Chou-Talalay equation, which takes into account both the potency (IC₅₀) and the shape of the dose-effect curve⁴⁶. CI < 1 indicated synergism, and CI = 1 and CI > 1 indicated additive and antagonism, respectively.

Survival Analysis

Two independent datasets of breast cancer patients, the Netherlands Cancer Institute (NKI)⁴⁷ and University of North Carolina (UNC)⁴⁸ cohorts, one dataset of lung cancer patients and one dataset of ovarian cancer patients containing both genome-wide expression data and patient survival data were used for survival analysis. Kaplan-Meier analysis and the log-rank test were used to estimate patient prognosis.

Statistical analysis

All statistical analysis was performed with a one-tailed Student's *t*-test.

Supplementary Material

Refer to Web version on PubMed Central for supplementary material.

Acknowledgments

We thank S. Deming for proofreading the manuscript; M. Jasin for reagents; J. Chen for electroporation equipment, and MD Anderson Cancer Center core facilities for performing FACS.

This work was supported in part by a Cancer Center Support Grant CA016672 from the National Cancer Institute (NCI); NCI grant R01 CA112291 and Department of Defense Era of Hope Scholar Award (W81XWH-10-1-0558) to S.-Y.L.; and NCI grant K99 CA149186 to G.P.

References

1. Hanahan D, Weinberg RA. Hallmarks of cancer: the next generation. *Cell*. 2011; 144:646–674. [PubMed: 21376230]
2. Moynahan ME, Jasin M. Mitotic homologous recombination maintains genomic stability and suppresses tumorigenesis. *Nat Rev Mol Cell Biol*. 2010; 11:196–207. [PubMed: 20177395]
3. San Filippo J, Sung P, Klein H. Mechanism of eukaryotic homologous recombination. *Annu Rev Biochem*. 2008; 77:229–257. [PubMed: 18275380]
4. Levitt NC, Hickson ID. Caretaker tumour suppressor genes that defend genome integrity. *Trends in molecular medicine*. 2002; 8:179–186. [PubMed: 11927276]
5. Lord CJ, Ashworth A. The DNA damage response and cancer therapy. *Nature*. 2012; 481:287–294. [PubMed: 22258607]
6. Lukas J, Lukas C, Bartek J. More than just a focus: The chromatin response to DNA damage and its role in genome integrity maintenance. *Nat Cell Biol*. 2011; 13:1161–1169. [PubMed: 21968989]
7. Ciccio A, Elledge SJ. The DNA damage response: making it safe to play with knives. *Mol Cell*. 2010; 40:179–204. [PubMed: 20965415]
8. Slabicki M, et al. A genome-scale DNA repair RNAi screen identifies SPG48 as a novel gene associated with hereditary spastic paraplegia. *PLoS Biol*. 2010; 8:e1000408. [PubMed: 20613862]

9. Adamson B, Smogorzewska A, Sigoillot FD, King RW, Elledge SJ. A genome-wide homologous recombination screen identifies the RNA-binding protein RBMX as a component of the DNA-damage response. *Nature cell biology*. 2012; 14:318–328. [PubMed: 22344029]
10. Yun MH, Hiom K. CtIP-BRCA1 modulates the choice of DNA double-strand-break repair pathway throughout the cell cycle. *Nature*. 2009; 459:460–463. [PubMed: 19357644]
11. Jensen RB, Carreira A, Kowalczykowski SC. Purified human BRCA2 stimulates RAD51-mediated recombination. *Nature*. 2010; 467:678–683. [PubMed: 20729832]
12. Peng G, et al. BRIT1/MCPH1 links chromatin remodelling to DNA damage response. *Nature cell biology*. 2009; 11:865–872. [PubMed: 19525936]
13. Wood JL, Liang Y, Li K, Chen J. Microcephalin/MCPH1 associates with the Condensin II complex to function in homologous recombination repair. *The Journal of biological chemistry*. 2008; 283:29586–29592. [PubMed: 18718915]
14. Sjoblom T, et al. The consensus coding sequences of human breast and colorectal cancers. *Science*. 2006; 314:268–274. [PubMed: 16959974]
15. Wood LD, et al. The genomic landscapes of human breast and colorectal cancers. *Science*. 2007; 318:1108–1113. [PubMed: 17932254]
16. Bryant HE, et al. Specific killing of BRCA2-deficient tumours with inhibitors of poly(ADP-ribose) polymerase. *Nature*. 2005; 434:913–917. [PubMed: 15829966]
17. Farmer H, et al. Targeting the DNA repair defect in BRCA mutant cells as a therapeutic strategy. *Nature*. 2005; 434:917–921. [PubMed: 15829967]
18. Shoemaker RH. The NCI60 human tumour cell line anticancer drug screen. *Nature reviews. Cancer*. 2006; 6:813–823. [PubMed: 16990858]
19. Neve RM, et al. A collection of breast cancer cell lines for the study of functionally distinct cancer subtypes. *Cancer cell*. 2006; 10:515–527. [PubMed: 17157791]
20. Saal LH, et al. Recurrent gross mutations of the PTEN tumor suppressor gene in breast cancers with deficient DSB repair. *Nature genetics*. 2008; 40:102–107. [PubMed: 18066063]
21. Mendes-Pereira AM, et al. Synthetic lethal targeting of PTEN mutant cells with PARP inhibitors. *EMBO molecular medicine*. 2009; 1:315–322. [PubMed: 20049735]
22. Shen WH, et al. Essential role for nuclear PTEN in maintaining chromosomal integrity. *Cell*. 2007; 128:157–170. [PubMed: 17218262]
23. Mills GB, et al. Expression of TTK, a novel human protein kinase, is associated with cell proliferation. *The Journal of biological chemistry*. 1992; 267:16000–16006. [PubMed: 1639825]
24. Saurin AT, van der Waal MS, Medema RH, Lens SM, Kops GJ. Aurora B potentiates Mps1 activation to ensure rapid checkpoint establishment at the onset of mitosis. *Nature communications*. 2011; 2:316.
25. Lamb J, et al. The Connectivity Map: using gene-expression signatures to connect small molecules, genes, and disease. *Science*. 2006; 313:1929–1935. [PubMed: 17008526]
26. Gao N, et al. G1 cell cycle progression and the expression of G1 cyclins are regulated by PI3K/AKT/mTOR/p70S6K1 signaling in human ovarian cancer cells. *American journal of physiology. Cell physiology*. 2004; 287:C281–291. [PubMed: 15028555]
27. Chou TC. Drug combination studies and their synergy quantification using the Chou-Talalay method. *Cancer research*. 2010; 70:440–446. [PubMed: 20068163]
28. Juvekar A, et al. Combining a PI3K inhibitor with a PARP inhibitor provides an effective therapy for BRCA1-related breast cancer. *Cancer discovery*. 2012; 2:1048–1063. [PubMed: 22915751]
29. Ibrahim YH, et al. PI3K inhibition impairs BRCA1/2 expression and sensitizes BRCA-proficient triple-negative breast cancer to PARP inhibition. *Cancer discovery*. 2012; 2:1036–1047. [PubMed: 22915752]
30. Stecklein SR, et al. BRCA1 and HSP90 cooperate in homologous and non-homologous DNA double-strand-break repair and G2/M checkpoint activation. *Proc Natl Acad Sci U S A*. 2012; 109:13650–13655. [PubMed: 22869732]
31. Krietsch J, et al. Reprogramming cellular events by poly(ADP-ribose)-binding proteins. *Mol Aspects Med*. 2013; 34:1066–1087. [PubMed: 23268355]

32. Gagne JP, et al. Quantitative proteomics profiling of the poly(ADP-ribose)-related response to genotoxic stress. *Nucleic acids research*. 2012; 40:7788–7805. [PubMed: 22669911]
33. Bunting SF, et al. 53BP1 inhibits homologous recombination in Brca1-deficient cells by blocking resection of DNA breaks. *Cell*. 2010; 141:243–254. [PubMed: 20362325]
34. Bouwman P, et al. 53BP1 loss rescues BRCA1 deficiency and is associated with triple-negative and BRCA-mutated breast cancers. *Nature structural & molecular biology*. 2010; 17:688–695.
35. Swisher EM, et al. Secondary BRCA1 mutations in BRCA1-mutated ovarian carcinomas with platinum resistance. *Cancer research*. 2008; 68:2581–2586. [PubMed: 18413725]
36. Edwards SL, et al. Resistance to therapy caused by intragenic deletion in BRCA2. *Nature*. 2008; 451:1111–1115. [PubMed: 18264088]
37. Audeh MW, et al. Oral poly(ADP-ribose) polymerase inhibitor olaparib in patients with BRCA1 or BRCA2 mutations and recurrent ovarian cancer: a proof-of-concept trial. *Lancet*. 2010; 376:245–251. [PubMed: 20609468]
38. Fong PC, et al. Inhibition of poly(ADP-ribose) polymerase in tumors from BRCA mutation carriers. *The New England journal of medicine*. 2009; 361:123–134. [PubMed: 19553641]
39. Gelmon KA, et al. Olaparib in patients with recurrent high-grade serous or poorly differentiated ovarian carcinoma or triple-negative breast cancer: a phase 2, multicentre, open-label, non-randomised study. *The lancet oncology*. 2011; 12:852–861. [PubMed: 21862407]
40. Zhou J, et al. AMPK mediates a pro-survival autophagy downstream of PARP-1 activation in response to DNA alkylating agents. *FEBS letters*. 2013; 587:170–177. [PubMed: 23201261]
41. Hu R, et al. ZNF668 functions as a tumor suppressor by regulating p53 stability and function in breast cancer. *Cancer research*. 2011; 71:6524–6534. [PubMed: 21852383]
42. Park YY, et al. FOXM1 mediates Dox resistance in breast cancer by enhancing DNA repair. *Carcinogenesis*. 2012; 33:1843–1853. [PubMed: 22581827]
43. Simon R, et al. Analysis of gene expression data using BRB-ArrayTools. *Cancer Inform*. 2007; 3:11–17. [PubMed: 19455231]
44. McMurray HR, et al. Synergistic response to oncogenic mutations defines gene class critical to cancer phenotype. *Nature*. 2008; 453:1112–1116. [PubMed: 18500333]
45. Huang J, et al. RAD18 transmits DNA damage signalling to elicit homologous recombination repair. *Nature cell biology*. 2009; 11:592–603. [PubMed: 19396164]
46. Chou TC. Theoretical basis, experimental design, and computerized simulation of synergism and antagonism in drug combination studies. *Pharmacological reviews*. 2006; 58:621–681. [PubMed: 16968952]
47. van de Vijver MJ, et al. A gene-expression signature as a predictor of survival in breast cancer. *The New England journal of medicine*. 2002; 347:1999–2009. [PubMed: 12490681]
48. Oh DS, et al. Estrogen-regulated genes predict survival in hormone receptor-positive breast cancers. *Journal of clinical oncology: official journal of the American Society of Clinical Oncology*. 2006; 24:1656–1664. [PubMed: 16505416]

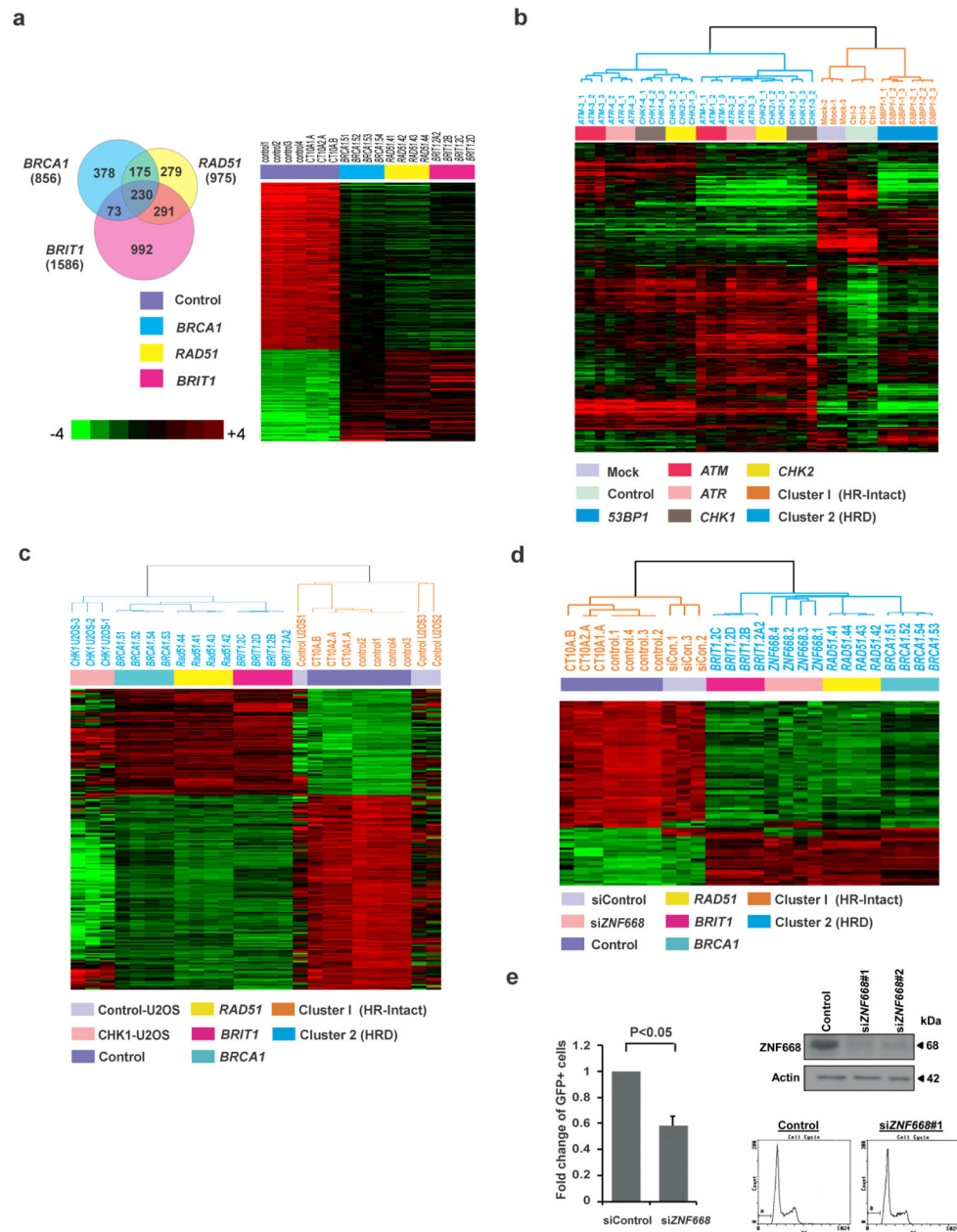


Figure 1. Gene Expression Analysis Identifies an HRD Gene Signature that Functionally Predicts the Status of HR Repair Deficiency

(a) (Left) Venn diagram indicating numbers of genes whose expression differed between each HRD cell line and the other HRD cell lines and the control cells. The analysis was performed using BRB-ArrayTools. (Right) Heat map of the HRD gene signature, consisting of 230 genes whose expression differed between each HR-deficient cell line and the control cells. Microarray was conducted in 7 independent samples of control cells and 4 independent samples of each individual knockdown cell line. Student *t*-test was conducted between the average of control cells and that of knockdown cells ($P < 0.001$).

(b) MCF-10A cells were infected by lentiviral particles targeting *ATM*, *ATR*, *CHK1*, *CHK2*, or *53BP1*, and (c) U2OS cells were transfected by the ON-TARGET-plus *CHK1* siRNAs. Microarray analyses were conducted to verify accuracy and specificity of the HRD gene signature by supervised clustering analysis.

(d) MCF-10A cells were transfected by the ON-TARGET-plus *ZNF668* siRNAs. Microarray analysis was conducted to verify the presence of the HRD gene signature by supervised clustering analysis.

(e) U2OS cells were transfected with *ZNF668* siRNA or control siRNA and analyzed for HR repair efficiency. Western blots demonstrating effective knockdown are shown to the upper right and cell cycle analysis with propidium iodide staining performed seventy-two hours after transfection are shown to the lower right.

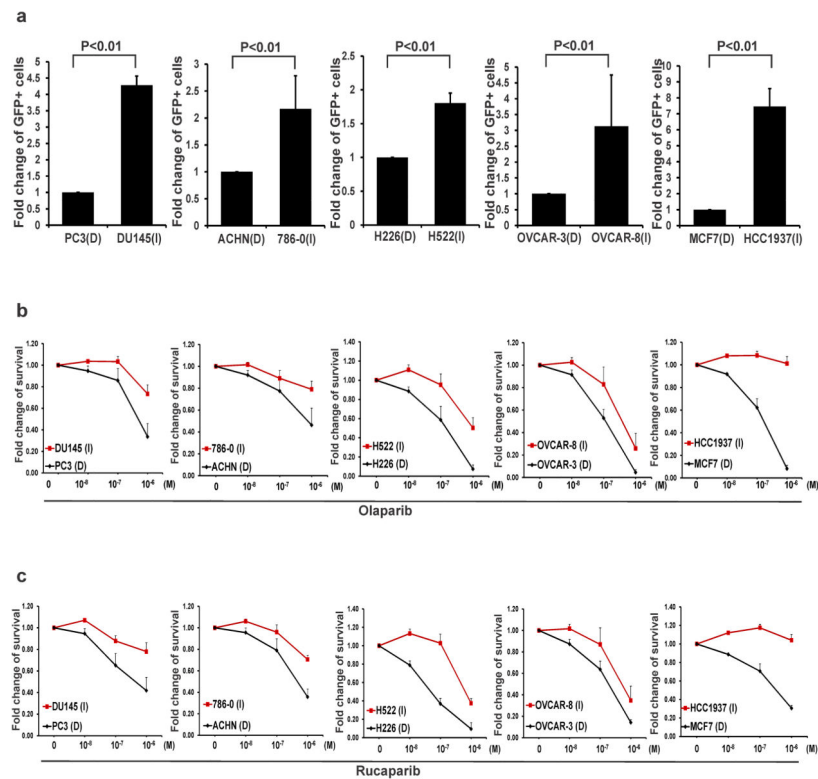


Figure 2. The HRD Gene Signature Predicts Sensitivity to PARP Inhibitors in Cancer Cells
(a) Modified HR repair assay was performed by transfecting cells with DRGFP DSB substrate plasmid and I-SceI plasmid through electroporation at 270V, 975uF using a BioRad genepulsar II. Flow cytometry analysis was performed 48 to 72 hours later to detect GFP-positive cells. Each value is shown as mean + SD for three independent experiments. Student's *t*-test showed increased HR repair efficiency in HR-intact cell lines compared to the HR-deficient cell lines in each cancer type, respectively.
(b, c) Colony formation assay was performed with indicated concentrations of olaparib **(b)** or rucaparib **(c)**. Each value is relative to the value in the cells treated with vehicle control. Results are shown as mean + SD from three independent experiments. Student's *t*-test showed that the drug response to PARP inhibitors differed between cancer cell lines with and without the HRD gene signature ($P < 0.05$ through panel b to c).

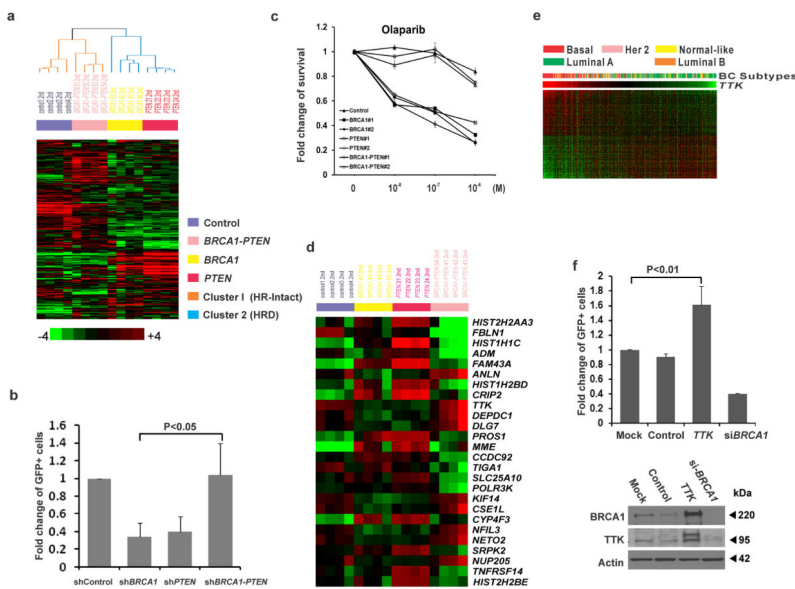


Figure 3. Loss of *PTEN* Reverses HRD and Confers PARP Inhibitor Resistance to *BRCA1*-Depleted Cells through Over-expression of *TTK*

(a) MCF-10A cells were infected by the indicated lentiviral particles targeting the indicated genes. Control cells and knockdown cells were subjected to microarray analysis. The presence of the HRD gene signature was analyzed by supervised clustering analysis.

(b) Modified HR repair assay was performed in MCF-10A cells by transfecting cells with DRGFP DSB substrate plasmid and I-SceI plasmid through electroporation, followed by analysis of GFP-positive cells by flow cytometry 48 to 72 hours later. Student’s *t*-test was performed from results of three independent experiments as mean + SD.

(c) The rate of cell survival in response to olaparib was determined by colony formation assay. Each value was relative to control cells without treatment and represents the mean ± SD from three independent experiments. Student’s *t*-test showed that treatment response differed between *BRCA1-PTEN* double knockdown cells and single knockdown cells ($P < 0.001$).

(d) Heat map of the HRD gene signature with the 26 genes most significantly changed in *BRCA1-PTEN* double knockdown cells compared to single-knockdown-cells.

(e) Microarray data from 295 breast cancers were clustered into basal-like, Her2-positive (Her2), luminal A, luminal B, and normal breast-like. Gene expression levels of *TTK* among the different breast cancer subtypes are indicated.

(f) Quantitative analysis of HR repair assay in cells transfected with *TTK* plasmids. Results are shown as mean + SD from three independent experiments. Student’s *t*-test showed that over-expression of *TTK* significantly increased HR repair efficiency ($P < 0.05$). *BRCA1* SMARTpool siRNA was used as a positive control. Western blots demonstrating effective knockdown are shown to the bottom.

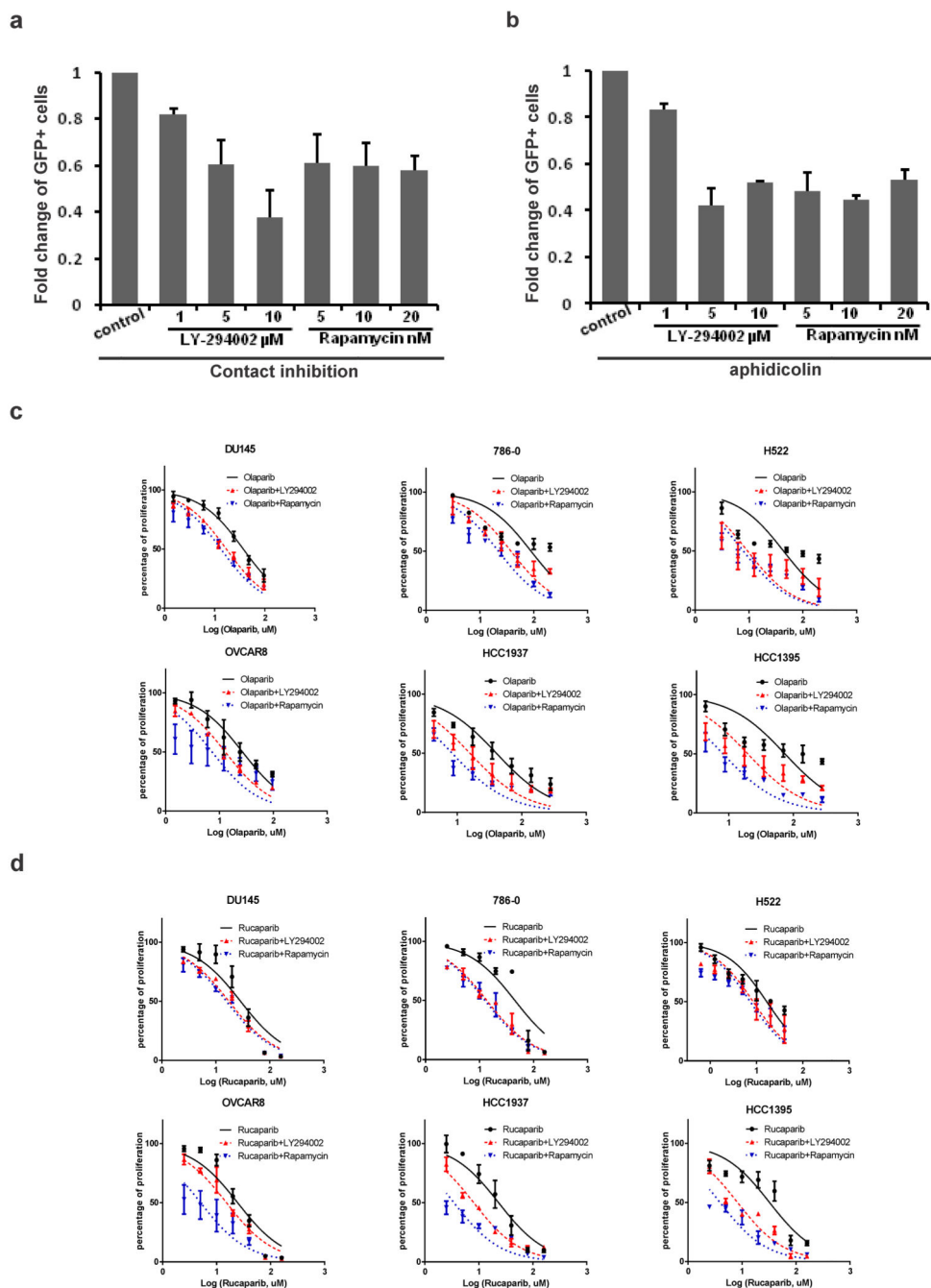


Figure 4. Validation of Agents Synergizing with PARP Inhibitors Treatment Predicted by the HRD Gene Signature

(a) U2OS cells were seeded at a high density to allow contact inhibition and transfected with I-SceI plasmid to induce DSBs. Then cells were treated with the indicated concentrations of PI3K inhibitor LY-294002 or mTOR inhibitor rapamycin for 16 hr before analysis of GFP-positive cells.

(b) U2OS cells were treated with the indicated concentrations of LY-294002 or rapamycin after I-SceI transfection and then treated with replication inhibitor aphidicolin (10 μ M) to

synchronize cell cycle for 16 hr before the HR repair efficiency analysis. For both **a** and **b**, results are shown as mean + SD from three independent experiments. Student's *t*-test ($P < 0.05$).

(c, d) The indicated cancer cell lines were treated with single or combined treatment of PARP inhibitor olaparib (**c**) or rucaparib (**d**), with LY-294002 or rapamycin and analyzed by MTT assay. Each value is relative to the value in the cells treated with vehicle control. Results are shown as mean \pm SEM from three independent experiments. The CI values calculated by CompuSyn software are listed in Supplementary Fig. 11c,d.

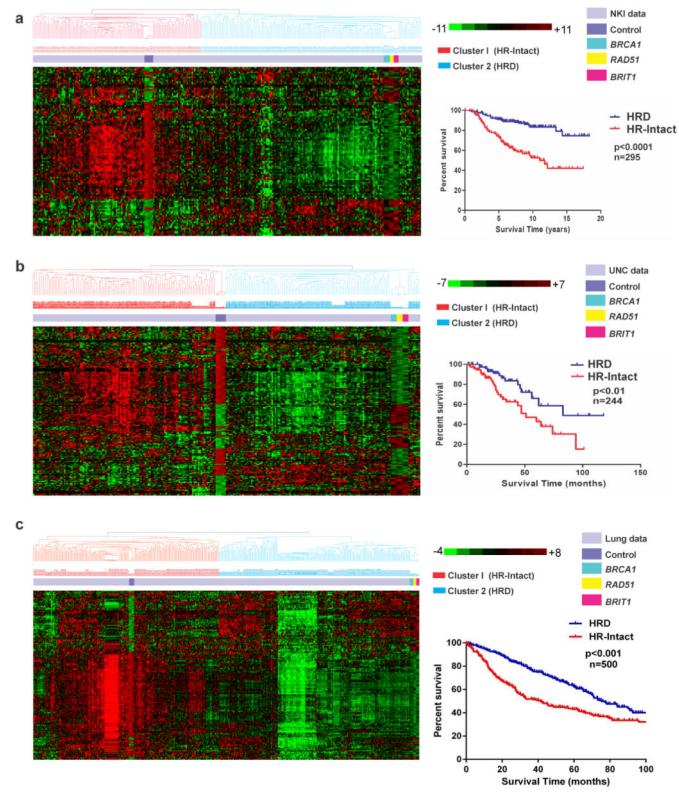


Figure 5. The HRD Gene Signature Predicts Overall Survival in Independent Breast and Lung Cancer Patient Cohorts

Datasets from patients with breast (a–b) and lung cancer (c) were clustered into two groups on the basis of whether the gene expression pattern was similar to the HRD gene signature. Kaplan-Meier overall survival curves are shown. P values are from log-rank test.