

RESEARCH ARTICLE

Open Access

Identification of putative TAL effector targets of the citrus canker pathogens shows functional convergence underlying disease development and defense response

Andre LA Pereira^{1†}, Marcelo F Carazzolle^{1,2†}, Valeria Y Abe¹, Maria LP de Oliveira^{1,3}, Mariane N Domingues¹, Jaqueline C Silva¹, Raul A Cernadas^{1,4} and Celso E Benedetti^{1*}

Abstract

Background: Transcriptional activator-like (TAL) effectors, formerly known as the AvrBs3/PthA protein family, are DNA-binding effectors broadly found in *Xanthomonas spp.* that transactivate host genes upon injection via the bacterial type three-secretion system. Biologically relevant targets of TAL effectors, i.e. host genes whose induction is vital to establish a compatible interaction, have been reported for xanthomonads that colonize rice and pepper; however, citrus genes modulated by the TAL effectors PthA^s and PthC^s of the citrus canker bacteria *Xanthomonas citri* (Xc) and *Xanthomonas aurantifolii* pathotype C (XaC), respectively, are poorly characterized. Of particular interest, XaC causes canker disease in its host lemon (*Citrus aurantifolia*), but triggers a defense response in sweet orange.

Results: Based on, 1) the TAL effector-DNA binding code, 2) gene expression data of Xc and XaC-infiltrated sweet orange leaves, and 3) citrus hypocotyls transformed with PthA2, PthA4 or PthC1, we have identified a collection of *Citrus sinensis* genes potentially targeted by Xc and XaC TAL effectors. Our results suggest that similar with other strains of *Xanthomonas* TAL effectors, PthA2 and PthA4, and PthC1 to some extent, functionally converge. In particular, towards induction of genes involved in the auxin and gibberellin synthesis and response, cell division, and defense response. We also present evidence indicating that the TAL effectors act as transcriptional repressors and that the best scoring predicted DNA targets of PthA^s and PthC^s in citrus promoters predominantly overlap with or localize near to TATA boxes of core promoters, supporting the idea that TAL effectors interact with the host basal transcriptional machinery to recruit the RNA pol II and start transcription.

Conclusions: The identification of PthA^s and PthC^s targets, such as the *LOB* (*LATERAL ORGAN BOUNDARY*) and *CCNBS* genes that we report here, is key for the understanding of the canker symptoms development during host susceptibility, or the defenses of sweet orange against the canker bacteria. We have narrowed down candidate targets to a few, which pointed out the host metabolic pathways explored by the pathogens.

Keywords: TAL effectors, PthA, PthC, *Xanthomonas citri*, *Xanthomonas aurantifolii*, Citrus canker, Target genes

* Correspondence: celso.benedetti@lnbio.cnpem.br

†Equal contributors

¹Laboratório Nacional de Biociências, Centro Nacional de Pesquisa em Energia e Materiais, R. Giuseppe Máximo Scolfaro 10000, Campinas, SP 13083-970, Brazil

Full list of author information is available at the end of the article

Background

Transcriptional activator-like (TAL) effectors of *Xanthomonas spp.* had been featured as central determinants of both bacterial pathogenicity and avirulence in numerous plant species or cultivars [1-6]. However, it was not until recently that the biochemical function of TAL effectors as transcriptional regulators was discovered [6-13].

The tridimensional structure of TAL effectors showed that these proteins are distinct from any other bacterial effectors that are targeted to the interior of the host cell by the type-III secretion system [14-17]. TAL effectors striking signature is made by the polymorphisms in positions 12-13th of the 33-34 amino acids tandem repeats, referred as repeat-variable diresidues (RVDs), which comprise the DNA-binding domain of the effector [12,13]. The consecutive repeats wrap around the DNA double helix, accommodating the RVDs adjacent to the target DNA bases in a one-to-one RVD-DNA base fashion, which are stabilized by hydrogen bonds and/or Wan-der Waals forces between the 13th RVD residue and the DNA base [15-17]. These TAL effector-targeted sequences have been initially called UPT (up-regulated by TAL effector) boxes, and later more broadly, Effector Binding Elements (EBEs) [6,9]. The discovery of the TAL effector code has provided an invaluable tool for genome engineering by user-designed TAL effectors fused to catalytic domains, or designer TAL effectors to activate gene expression and explore their function during bacterial infection processes [18-20].

Based on host-range, *Xanthomonas citri* strains belong into different pathotypes being the Asian group A the most aggressive that exhibit wide-host range. Strains from groups B and C form a phylogenetically distinct clade originated in South America that exhibit limited host range [4,21]. The TAL effectors identified in *X. citri* strains were designated PthA“s”, PthB“s” and PthC“s”, and despite they are inherent in pathogenicity, the corresponding host gene targets remain uncharacterized [2,4,21-23]. Interestingly, a pioneering study showed that pathotypes A, B and C carry at least one isofunctional PthA, PthB or PthC effector of 17.5 repeat domains, which is essentially required to elicit hyperplastic canker lesions on citrus [4,21]. On the other hand, none of the TAL effectors from the limited-host-range strains (pathotypes B and C) was able to trigger the hypersensitive response (HR) observed in grapefruit plants when expressed heterologously in other strain, suggesting that TAL effectors from citrus canker pathogens do not limit host range but rather contribute to virulence associated functions [4,21].

Recent reports have focused on the computational-based prediction of EBEs in plant genomes to identify the putative host gene targets of TAL effectors [13,24,25]. For citrus, the *in silico* analyses to predict PthA“s” targets in sweet orange provided a set of candidates but additional

experimental evidence of, e.g. gene expression, is still needed to validate such predictions [24]. Also, those studies did not include PthB“s” or PthC“s” effectors from the restricted host-range strains like *Xanthomonas aurantifolii* pathotype C (XaC), which in turn trigger a defense response in sweet oranges. Such analyses could provide molecular candidates that regulate the citrus defense response against *Xanthomonas spp.* [24,26]. In other pathosystems, the identification of TAL effector-induced genes of *X. vesicatoria* and *X. oryzae* has revealed novel virulence mechanisms of plant bacteria mediated by the targeted transcriptional induction of key regulators of host susceptibility [3,6,8,11]. Therefore, identification of TAL effector targeted factors that regulate citrus canker susceptibility is a milestone to understand and improve disease resistance.

Using microarray analyses, we have previously shown that the genes up-regulated by XaC in sweet orange leaves are involved in basal defense. In contrast, *X. citri* (Xc) induced genes associated with cell division and growth at the beginning of the infection process [26]. We also found that many of the rapidly Xc-induced genes, including cellulases, expansins and other cell-wall remodeling proteins, are co-regulated by auxin and gibberellin, hormones that are required for canker development [27] and control cell growth and expansion in other plant species [28]. TAL effectors not only play a central role as major determinants of host susceptibility, but are also capable of eliciting a resistance response when targeting HR-executor genes [3,6-8,29,30]. Based on these evidences, we hypothesized that TAL effectors from Xc and XaC are directly regulating the transcription of sweet orange genes involved in canker formation and defense response, respectively.

In this study, we present a combination of bioinformatics, microarray analyses, and molecular assays to identify sweet orange genes targeted by PthA2, PthA4 and PthC1 proteins. We show that the ectopic expression of PthA2, PthA4 or PthC1 in citrus epicotyls resulted in the up-regulation of a group of genes involved in auxin and gibberellin response, cell growth, and defense response. Our *in silico* studies using the TAL effector code, predicted many EBEs for the PthA“s” and/or PthC effectors in the promoter regions of genes induced in epicotyls expressing the corresponding TAL effector. Interestingly, we noticed that the EBEs overlap with, or localize close to TATA box elements of the promoters. In addition, despite the different RVD composition between PthA“s” and PthC“s”, our results indicate a targeting of functionally-related genes, which further support a model where TAL effectors display the functional convergence by selective evolution as general TATA-binding proteins [24,25]. Finally, we present experimental evidence suggesting that TAL effectors from citrus canker pathogens also function as transcriptional repressors.

Results

Transcriptional changes in sweet orange triggered by Xc TAL effectors

By extensive gene expression analyses, we had identified numerous genes up-regulated during the canker disease development of sweet orange leaves infiltrated with Xc [26]. To test whether any of those genes are direct targets of TAL effectors, we have undertaken two complementary approaches. First, we performed microarrays assays of orange leaves after bacterial infiltration in the presence or absence of the protein synthesis inhibitor, cycloheximide (Ch), a strategy that has early pinpointed AvrBs3 targets in pepper plants [10,31]. We found that many of the genes induced by Xc at 6 and/or 48 h after infiltration [26] are also induced by Xc in the presence of Ch (Additional file 1), thus indicating that Xc elicit major transcriptional reprogramming independent of protein synthesis. Several of these differentially expressed genes are likely involved in terpene and gibberellin synthesis, ethylene production and signaling, cell-wall remodeling, cell division and defense responses (Additional file 1). In particular, we noticed that the ethylene synthesis pathway represented by orthologs of ACC synthase, ACC oxidase and AP2 factor genes, which play roles in cell wall softening [32-34], appears to be a primary mechanism elicited in the host after Xc sensing. On the other hand, defense response genes encoding chitinases, WRKY factors and pathogenesis-related (PR) proteins are also rapidly induced (Additional file 1).

Second, we transiently expressed the Xc TAL effectors PthA2 and PthA4 in sweet orange epicotyls and compared the transcriptional changes relative to epicotyls transformed with GUS as a control (Figure 1A). We selected PthA2 and PthA4 because they form heterodimers and interact with several citrus proteins implicated in transcriptional control [23,35-37]. By inspecting the RVD sequences of PthA2 and PthA4 (Figure 1B), we presumed that they would target common host genes. Consistent with this observation, we found that the transient expression of PthA2 or PthA4 resulted in the up-regulation of a similar group of genes that are functionally related to both defense and disease development (Additional file 2). The genes associated with canker development that were most strongly induced by both PthA2 and PthA4, encode cell-wall synthesis and remodeling enzymes, including a glycosyl transferase ortholog of *upa15* (CV709535) that is readily up-regulated by AvrBs3 in pepper plants [10]. In addition, the defense response induced genes encode chitinases, PR proteins and an ACC synthase, which are also up-regulated by Xc in the presence of Ch, thus providing initial evidence that they might be functional targets of PthA2 and PthA4 (Additional files 1 and 2). Notably, numerous genes up-regulated in response to PthA2 or PthA4 are functionally related to auxin and gibberellin synthesis

and signaling, cell division and growth, and defense responses (Additional file 2). In particular, we noticed a strong PthA4-dependent induction of genes encoding cell division and expansion proteins including kinesins, tubulins, histones, ribosomal proteins, and orthologs of *dem* (*defective embryo and meristems*) and LOB (*lateral organ boundary*) (Additional file 2). Besides, the transcriptional profile of epicotyls expressing PthA4 is remarkably similar to that of citrus leaves infiltrated with Xc 48 h post-inoculation [26], as shown by the up-regulation of a large number of genes related to auxin synthesis, mobilization, and signaling, including two homologs of the auxin influx carrier protein AUX1 (CV706455, CX053885) [38-40] (see Venn diagram in Additional file 2). In contrast, epicotyls expressing PthA2 showed the up-regulation of many genes implicated in cell-wall remodeling and gibberellin synthesis and signaling, including orthologs of *upa6* and *upa7* (*alpha-expansins*), and *upa22* (*GA-like protein*), respectively, which are putative targets of AvrBs3 in pepper [10,31] (Additional file 2). PthA2 also induced several genes encoding retrotransposons (Additional file 2), which were also reported as off-targets of AvrXa7 in rice [25].

Gene ontology (GO) enrichment analysis showed that while PthA2 modulate several genes categorized in cell-wall organization and RNA-dependent DNA replication and integration, PthA4 affected the expression of genes grouped under the microtubule-based movement and cell growth category. In addition, the GO analysis showed that PthA2 and PthA4 commonly regulate a large number of genes involved in carbohydrate (sucrose, glucan and glycoside) metabolism, and cell-wall organization and biogenesis (Figure 2 and Additional file 2). These evidences support the functional convergence between Xc TAL effectors, and is in agreement with recent reports of *X. oryzae* TAL effectors [24,25]. In addition, the common targeting of PthA2 and PthA4 is a strong indicator that they may have additive or even synergistic roles for activation of host genes required for citrus canker susceptibility.

Transcriptional changes in sweet orange triggered by PthC1, a TAL effector of *X. aurantifolii*

We have shown previously that XaC elicit an HR-type response in sweet orange leaves, which is characterized by the up-regulation of multiple defense-related genes [26]. To examine whether XaC TAL effectors are involved in the host transcriptional defense response, we cloned two TAL effectors from XaC strain ICMP 8354, designated PthC1 and PthC2. The essential differences between XaC TAL effectors occur in the number of repeat domains and the nature of the repeat variable diresidues (RVDs), which altogether form the DNA-binding domain of the protein [12,13]. PthC1 has 18 RVDs or 17.5 repeat domains, and PthC2 is shorter with only 15 RVDs or 14.5 repeat domains (Figure 1B). Despite the overall structural

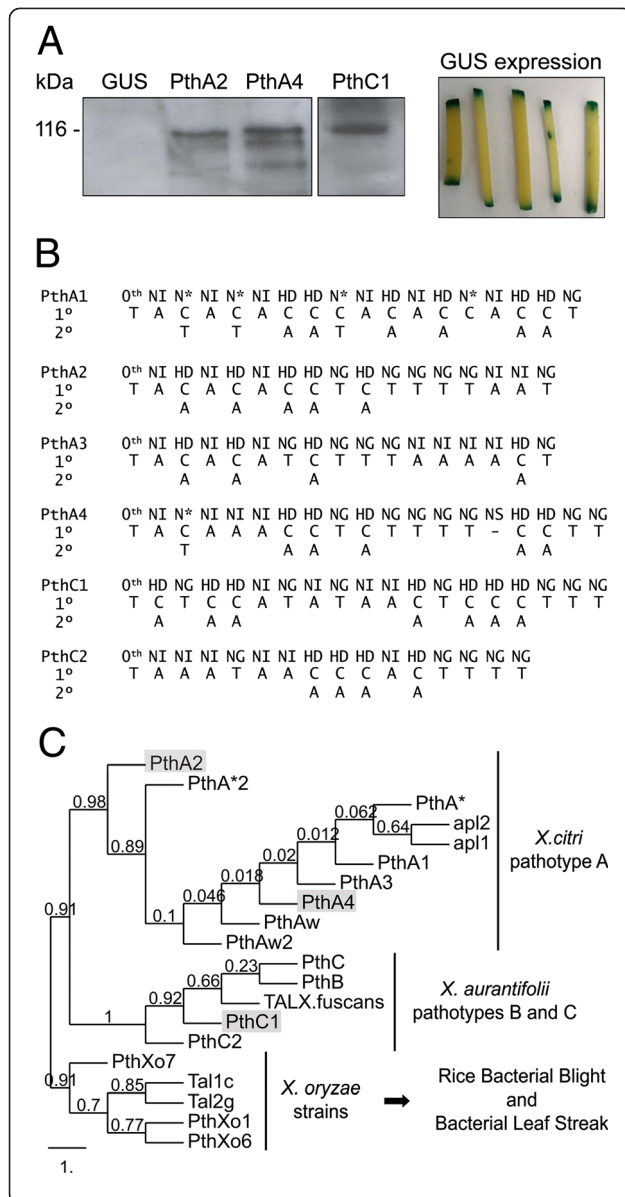


Figure 1 Heterologous expression in citrus epicotyls, RVD sequences and phylogeny of TAL effectors PthA2, PthA4 and PthC1.

(A) Western blot of protein extracts from sweet orange epicotyls transfected with *A. tumefaciens* EHA105 carrying pBI121-35S::p θ A2 (PthA2), pBI121-35S::p θ A4 (PthA4), pBI121-35S::p θ C1 (PthC1), or the native plasmid pBI121-35S::uidA (GUS) for control of TAL effectors expression. Total protein from epicotyls expressing PthA2, PthA4 or, PthC1 proteins (~116 kDa) were separated by electrophoresis on 10% SDS-polyacrylamide gels, transferred to PVDF membranes, and detected with anti-PthA2 serum (left panel). The expression of uidA gene was assayed histochemically for β -glucuronidase (GUS) activity using 5-bromo-4-chloro-3-indolyl- β -D-glucuronic acid (X-Gluc) as substrate (right panel). (B) RVD sequence composition of *X. citri* isolate 306 TAL effectors PthA1, PthA2, PthA3 and PthA4, and PthC1 and PthC2 from *X. aurantifolii* ICMP 8435, aligned with the corresponding predicted DNA targets. According to the TAL effector code, only the first and second bases associated with higher frequency for each RVD are represented. (C) Phylogenetic tree of TAL effectors from different *Xanthomonas* strains that cause citrus canker disease and blight or leaf streak of rice. The maximum likelihood analysis was built with the PhyML tool using a bootstrapping procedure of 500 repetitions. Only the C-terminal domains (~278 residues) of TAL effectors from *Xanthomonas* spp. were used for the analysis. The four PthA"s" of Xc strain 306 belong into a group close to other TAL effectors from pathotype A strains; meanwhile, PthCs and PthBs from *X. aurantifolii* integrate a distinct group of pathotypes B and C strains, respectively. The tree is displayed with the TAL effectors from *X. oryzae* strains rooted as outgroup. Amino acid sequences were aligned using MUSCLE and analyzed on phylogenetic pipeline of Phylogeny.fr [41].

similarities with PthA"s" of Xc, PthC1 and PthC2 are phylogenetically more closely related to PthB"s" and PthC"s" from other pathotype B and C strains, respectively (Figure 1C), that are distinguished by their limited host range [4,21]. In terms of the RVD composition, PthC1 appears also more similar to PthB and PthC of other citrus canker strains reported to induce weak disease symptoms or hypersensitive response in sweet oranges [4,21]. Despite the fact that PthC from a group C strain was not required for the HR elicited on grapefruit [4], we decided to test whether PthC1 induce the expression of defense-related genes in sweet orange, as we observed during XaC infection [26]. Therefore, we transfected PthC1 in sweet orange epicotyls and compared the transcriptional changes relative to epicotyls expressing PthA2, PthA4, or the GUS gene as reference (Figure 1A). We found that PthC1 elicit not only a different but also an opposite effect of PthA2 and PthA4, because its expression resulted in a general down regulation of genes involved in auxin and gibberellin synthesis and signaling, cell-wall remodeling, cell division, and defense responses (Additional file 3). The fact that auxin and gibberellin promote initial canker pustule formations [27] indicate that PthC1, in contrast to PthA2 and PthA4, do not contribute to canker symptoms in sweet orange. Nevertheless, we found Aux/IAA and bZip orthologous genes repressed by PthC1 (CV713157, CV704184, CK701644, CN182471), which function as

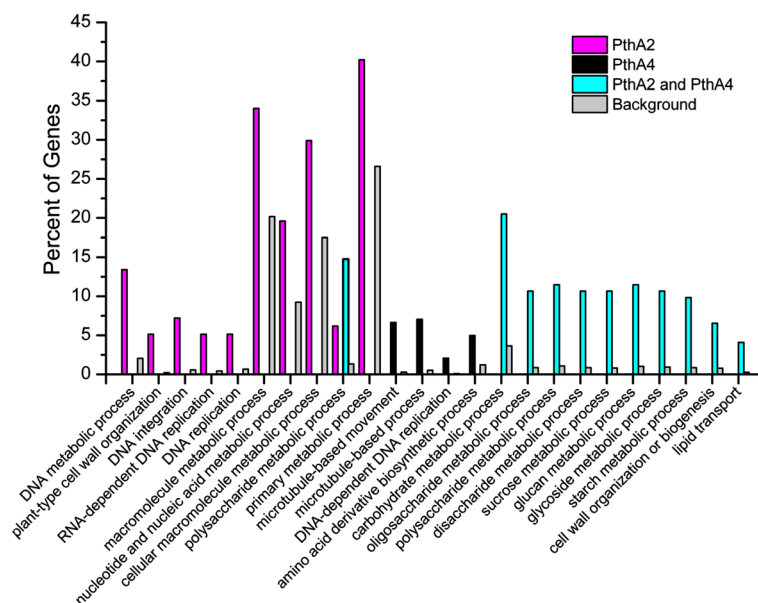


Figure 2 GO enrichment analysis for PthA2 and/or PthA4-regulated genes. GO enrichment analysis performed with agriGO [42], showing that PthA2 and PthA4 modulate several genes in sweet orange associated with canker development. Despite the fact that PthA2 and PthA4 regulate distinct, but related sets of genes implicated in cell-wall remodeling, cell division and growth, they both altered group of genes involved in carbohydrate metabolism and cell-wall organization and biogenesis. The identity of the enriched genes can be found in Additional file 2.

negative regulators of the auxin and gibberellin signaling pathways affecting plant growth and development [43-45]. In addition, the down-regulation of genes encoding GH3-like enzymes (CF837666, CF837443) [46] and indole-3-acetic acid amido synthase (CV714093) suggest that PthC1 operates to increase the active pools of free auxin. On the other hand, we found no obvious HR-like executor among the genes up-regulated by PthC1 in sweet orange epicotyls (Additional file 3), although an AP2-domain transcription factor orthologous of the tomato PtI4 [47] might be an interesting candidate (Additional file 3).

Together, these data show that PthC1, in contrast to PthA2 and PthA4, regulate a different set of genes in sweet orange. Although these genes may not significantly favor host susceptibility, they do not appear to be elicitors of an HR response either. This idea is consistent with the observation that a knockout mutation of *pthC* in a group C strain resulted in loss of pathogenicity on lime, but still triggers the HR response on grapefruit [4].

Computational prediction of EBEs for PthA and PthC in citrus genomes

The public release of the *Citrus sinensis* and *Citrus clementina* genomes together with the TAL effector code of DNA binding [12,13], provides a suitable model to investigate *in silico* the TAL effector-targeted genes in citrus. Because the computational tools available for TAL effector targets prediction do not yet support analyses of

the citrus genomes [24,25,48], we designed a position weight matrix based on TAL effector-DNA association frequencies to predict and score EBEs for Xc and XaC TAL effectors in citrus gene promoters (Additional file 4). Putative EBEs for the four PthA“s” and the 2 PthC“s” of strains Xc 306 and XaC ICMP 8354, respectively, were identified in nearly one thousand promoters. We then selected the top one hundred best scoring *C. sinensis* promoters ranging from 8.5 to 17.4 for further analysis (Additional file 5). In order to test the performance of our computational matrix analysis, we used the target finder function of the TAL Effector-Nucleotide Targeter 2.0 (TALE-NT) tools [48] to search for PthA“s” and PthC“s” EBEs in the top twenty best scoring promoters. We retrieved virtually the same EBE predictions with equivalent score values [data not shown], indicating a similar achievement between our prediction method and the TALE-NT tools.

Next, we functionally categorized our candidates based on sequence homology to plant, yeast, or animal gene orthologs with known biological function (Additional file 5). In addition to genes implicated in auxin and gibberellin synthesis and signaling, and in cell-wall remodeling, we found a substantial number of genes involved in cell division and morphogenesis, transcription regulation and defense (Additional file 5). Although most of our best scoring promoters do not correspond with the genes identified in our microarray analyses (see below), these data seem to be meaningful because the predicted

candidates belong to the same functional categories of those up-regulated in citrus epicotyls in response to PthA/PthC expression or in Xc-infiltrated leaves in the presence of Ch (Additional files 1, 2, 3). Remarkably, we predicted two PthC1 targets, orange1.1g035902m.g and orange1.1g035488m.g (Additional file 5), with a strong similarity to the *Bs3* gene of pepper, which is an HR executor transcriptionally activated by AvrBs3 of *X. vesicatoria* [7]. We also found that several PthA“s” putative targets are involved in abscisic acid (ABA) synthesis, signaling and response, particularly for PthA1 (Additional file 5). Interestingly, some of these genes, including an ABA8-hydroxylase (orange1.1g012199m.g), ABI3 (orange1.1g038867m.g) and ABI3-interacting protein-1 (orange1.1g044737m.g), also participate in the cross-talk between auxin and gibberellin, and in plant growth and development [49-51] (Additional file 5).

Experimental validation of putative gene targets of PthA and PthC effectors

Although computational identification of TAL effector-targeted genes have been recently conducted for TAL effectors of *X. oryzae* and Xc in their corresponding host genomes, the studies for Xc are largely deficient on

experimental validation for novel candidate targets [24,25]. Nevertheless, the combination of *in silico* predictions with gene expression data, demonstrated to be a suitable strategy to identify new biologically relevant TAL effector targets [52]. Thus, in order to verify our *in silico* target predictions, we used the whole set of microarray data in our hands to search for experimental evidence of gene regulation of our predicted TAL effector targets. We found that nearly 20% and 3% of the computational-predicted targets were up and down-regulated, respectively, indicating that TAL effectors not only induce but may ultimately repress the expression of host predicted targets (Additional files 1, 2, 3 and 5). Using a cross-check criteria we were able to select targets that 1) are differentially expressed in epicotyls expressing the corresponding TAL effector, 2) are also differentially expressed after infiltration of Xc in the presence of Ch, and 3) are functionally associated with the mechanisms of canker development or defense response (Table 1).

To verify these data, we first confirmed the TAL effector protein accumulation in epicotyls transiently expressing *pthA2*, *pthA4* or *pthC1* (Figure 1A), and subsequently examined the mRNA levels of the predicted targets by quantitative RT-PCR on the transgenic tissues. Totally, sixteen

Table 1 Predicted TAL effector targeted genes in *C. sinensis* that are transcriptionally regulated by Xc in the presence of Ch or, by the heterologous expression of the TAL effector

Microarray data (fold change)	Sweet orange genes with	Homologous gene description	Functional category	References
PthA2 binding sites				
PthA2 x GUS (4.0)	orange1.1g032466m.g	Pepper UPA22 (UPA22)	GA response	[10,31]
	orange1.1g031880m.g	Tobacco rac-like GTPase 1 (RAC)	Auxin response	[53]
	orange1.1g001197m.g	Rat transcription activator BRG1 (BRG1)	Cell growth	[54]
PthA2 x GUS (-3.1)	orange1.1g023431m.g	Xyloglucan endotransglucosylase (XET)	Cell growth	[55]
	orange1.1g040761m.g	Castor bean LOB domain protein (LOB2)	Defense	[56]
PthA2 x GUS (-3.1)	orange1.1g037640m.g	Tobacco UDP-glucosyltransferase (UDPGT)	Defense	[57]
PthA4 binding sites				
Xc + Ch x Ch (3.8)	orange1.1g024897m.g	Tobacco 14-3-3 protein (14-3-3)	Cell growth	[58-60]
PthA4 x GUS (11.4)	orange1.1g017949m.g	<i>Citrus limetta</i> dioxygenase (DIOX)	Cell growth	[61,62]
PthA4 x GUS (5.2)	orange1.1g018649m.g	Tobacco cysteine proteinase (CP)	Defense	[63,64]
	orange1.1g037138m.g	<i>C. trifoliata</i> NBS-LRR protein (CCNBS1)	Defense	[65]
PthC1 binding sites				
	orange1.1g041266m.g	Tomato self pruning-interacting protein 1 (SIP1)	Cell growth	[66]
	orange1.1g010756m.g	Potato Ca ²⁺ -dependent protein kinase (CDPK)	Cell growth	[67]
	orange1.1g039072m.g	Potato CC-NBS-LRR protein (CCNBS2)	Defense	[68]
	orange1.1g042296m.g	Sunflower CC-NBS-LRR protein (CCNBS3)	Defense	[69]
Multiple EBEs				
PthA2, PthA4, PthC1				
	orange1.1g046669m.g	Tobacco Avr9/Cf9 elicited protein 146 (AE146)	Defense	[70]
PthA4, PthC1				
Xc + Ch x Ch (8.8)	orange1.1g026556m.g	Aspen LOB domain 1 (LOB1)	Cell growth	[71]

genes implicated in symptom development or defense response, were selected for target validation (Table 1). These candidates were differentially expressed in response to Xc infiltration and also after TAL effector expression in epicotyls, and encoded at least one predicted EBE for the corresponding TAL effector in their promoters. Initially, we tested the expression of four putative PthA2 targets, including an ortholog of the pepper *upa22*, which encodes a xyloglucan endotransglucosylase (*XET*), a RAC-GTPase gene (*RAC*), and an ortholog of the rat *BRG1*, implicated in cell wall strengthening, auxin response, and tumor development, respectively (Table 1). Consistent with the microarray data (Table 1), the citrus *upa22* and the *BRG1* genes were slightly but preferentially up-regulated by PthA2 compared to PthA4, PthC1 or GUS in epicotyls; in contrast, *XET* was significantly down-regulated in response to PthA2 (Figure 3A). The *RAC* gene, which was induced in epicotyls expressing PthA2 and PthA4, also appeared down-regulated in tissues expressing PthC1 (Figure 3A). Despite the strong induction of *RAC* by PthA4 (Figure 3A), we found no good scoring candidate EBEs for PthA4 in the *RAC* promoter. Presumably, this is part of false negative predictions that account for the current limitations of computational analyses of TAL effector targets [17,52,72,73].

To test the PthA4 candidate targets, we selected 4 genes encoding orthologous of a tobacco 14-3-3 protein, a two-domain dioxygenase (*DIOX*), a cysteine protease (*CP*), and a CC-NBS-LRR protein (*CCNBS1*), which play roles in gibberellin synthesis, cell elongation and defense (Table 1). Consistent with the microarray data (Table 1), we found that the four selected genes were strongly (more than 6 fold-change) up-regulated in epicotyls expressing PthA4, which support the computational prediction of best scoring targets of PthA4 (Figure 3B). Although *14-3-3* and *DIOX* were induced moderately (between 2 to 3 fold-change) in epicotyls expressing PthC1, no EBEs for PthC1 were identified in these targets.

We also tested the PthC1 predictions using 4 selected candidate genes, including the orthologs of a potato Ca²⁺-dependent protein kinase (*CDPK*) and tomato self-pruning interacting protein 1 (*SIP1*), and two CC-NBS-LRR resistance genes (*CCNBS2* and 3) (Table 1). An ortholog of the pepper *Bs3* gene (orange1.1g035488m.g) was also tested; however, we were not able to detect this gene by qPCR analysis, even using large amounts of cDNA input. We found that *SIP1* and *CCNBS3* genes were significantly induced in response to PthC1 expression relative to GUS, although *CCNBS3* was also up-regulated by PthA2 and 4 (Figure 3C). In addition, *SIP1* and *CCNBS2* appeared also induced in response to PthA4 expression. Interestingly, we found an EBE for PthA4 in the *SIP1* promoter with a score value of 6.2 that explains the observation. In contrast, *CDPK* was 3-fold repressed by PthC1 (Figure 3C).

Altogether, these results partially confirm the TAL effector targets prediction but also suggest that more than one TAL effector might induce the same gene, and that TAL effectors can ultimately cause transcriptional repression of targets, although we have not tested whether this is a direct or indirect (secondary) effect of the protein.

To further investigate these observations, we evaluated the expression of a predicted PthA2 target, a phenylpropanoid:UDP-glucosyltransferase (*UDPGT*), which was nearly 3-folds down-regulated in PthA2-expressing epicotyls (Table 1). We also tested a predicted target of PthA2, PthA4 and PthC1 encoding an Avr9/Cf9-elicited protein 146 homolog, *AE146*, as well as two Lateral Organ Boundaries genes, *LOB1* and *LOB2*, identified as targets of PthA4/PthC1 and PthA2, respectively (Table 1). A previous report predicted that the citrus *LOB1* was targeted by PthA4 [24]. We found that *AE146* is induced in response to PthA2 and PthA4 expression, but in contrast, PthA2, PthA4 and PthC1, down-regulate the expression of *UDPGT* (Figure 4A). Consistent with our microarray data (Table 1), *LOB1* was predominantly induced by PthA4, but repressed by PthC1, while all the three TAL effectors tested induce the expression of *LOB2* (Figure 4B).

We also used a *pthA4* knockout derivative of Xc, which is not pathogenic in sweet orange neither it induces hyperplastic lesions [23], to analyze the expression levels of candidate PthA4 targets. We found that three of the predicted PthA4 targets, *DIOX*, *CP* and *14-3-3*, are induced at higher levels in leaves infiltrated with the wild type Xc strain relative to the *pthA4*-deletion mutant; however, these genes were also up-regulated by the *pthA4* mutant relative to water infiltration, which indicates that these genes present a more complex mechanism of induction where PthA4 is not absolutely required (Figure 5A).

We also evaluated the expression of two PthA2 predicted targets *RAC* and *LOB2*, and two PthC1 targets *LOB1* and *SIP1*, which were highly up-regulated in epicotyls expressing PthA4 (Figure 3A and C). Although *RAC* expression was under the level of detection by quantitative PCR (not shown), we found that the transcript accumulation of *SIP1* was lower in response to *pthA4*-deletion mutant relative to leaves infiltrated with the wild type Xc (Figure 5A). Similarly, the expression levels of *LOB1* and *LOB2* were significantly lower in leaves infiltrated with the *pthA4*-deletion mutant (Figure 5B). Nevertheless, *LOB1*, *LOB2* and *SIP1* were also up-regulated in leaves infiltrated with the *pthA4*-deletion mutant relative to water-infiltrated leaves, suggesting an alternative mechanism of target induction, potentially by other TAL effectors that our analysis failed to predict.

Taken together these results confirm our previous observations, and point out to *LOB1*, *LOB2*, *SIP1*, *CP* and *DIOX* as primary targets of Xc and XaC TAL effectors, in particular of PthA4 (Figure 5).

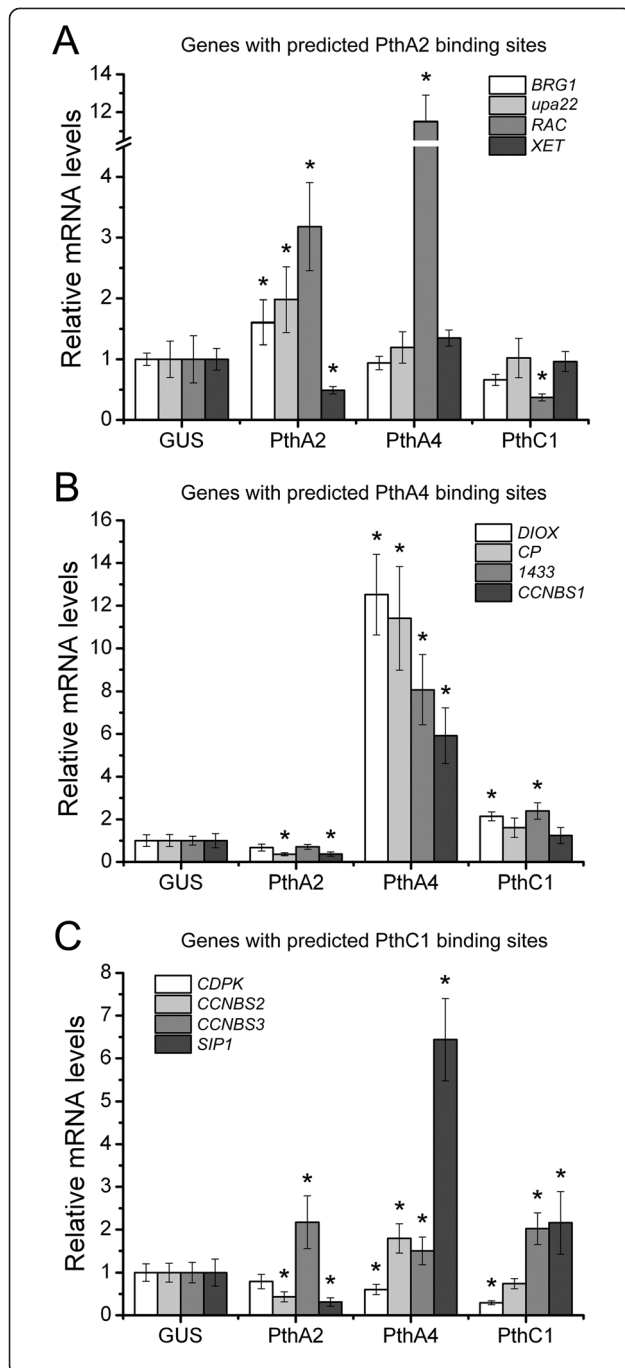


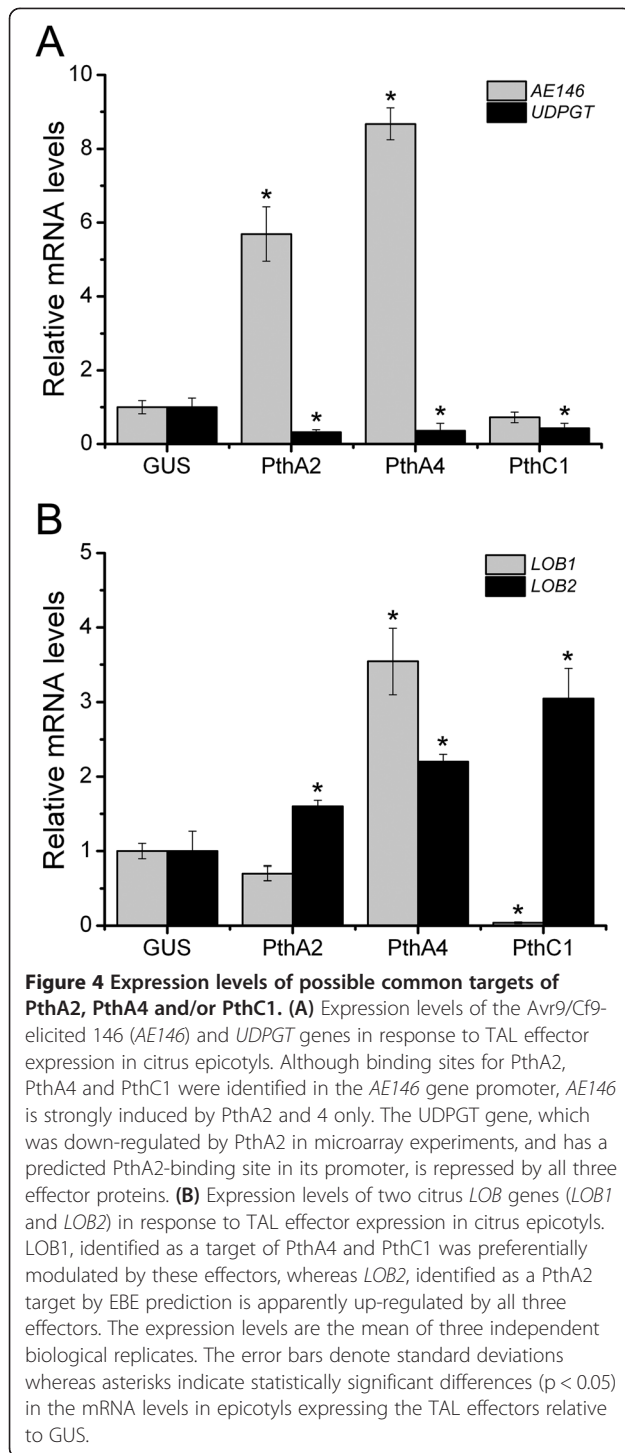
Figure 3 Gene expression levels of predicted targets of PthA2, PthA4 and PthC1 in epicotyls transfected with the corresponding TAL effector. **(A)** Quantitative RT-PCR (qPCR) of four sweet orange genes with best-scoring effector-binding elements (EBEs) predicted for PthA2 in their promoters. **(B)** qPCR of four sweet orange genes with best-scoring EBEs predicted for PthA4 in their promoters. Predicted PthA4 target genes are significantly and predominantly up-regulated by PthA4 expression. **(C)** qPCR of four sweet orange genes with best-scoring EBEs predicted for PthC1 of XaC in their promoters. The expression levels are the mean of three independent biological replicates. The error bars denote standard deviations whereas asterisks indicate statistically significant differences ($p < 0.05$) in the mRNA levels in epicotyls expressing the TAL effectors relative to GUS.

PthA and PthC EBEs overlap with or localize close to TATA box elements in citrus promoters

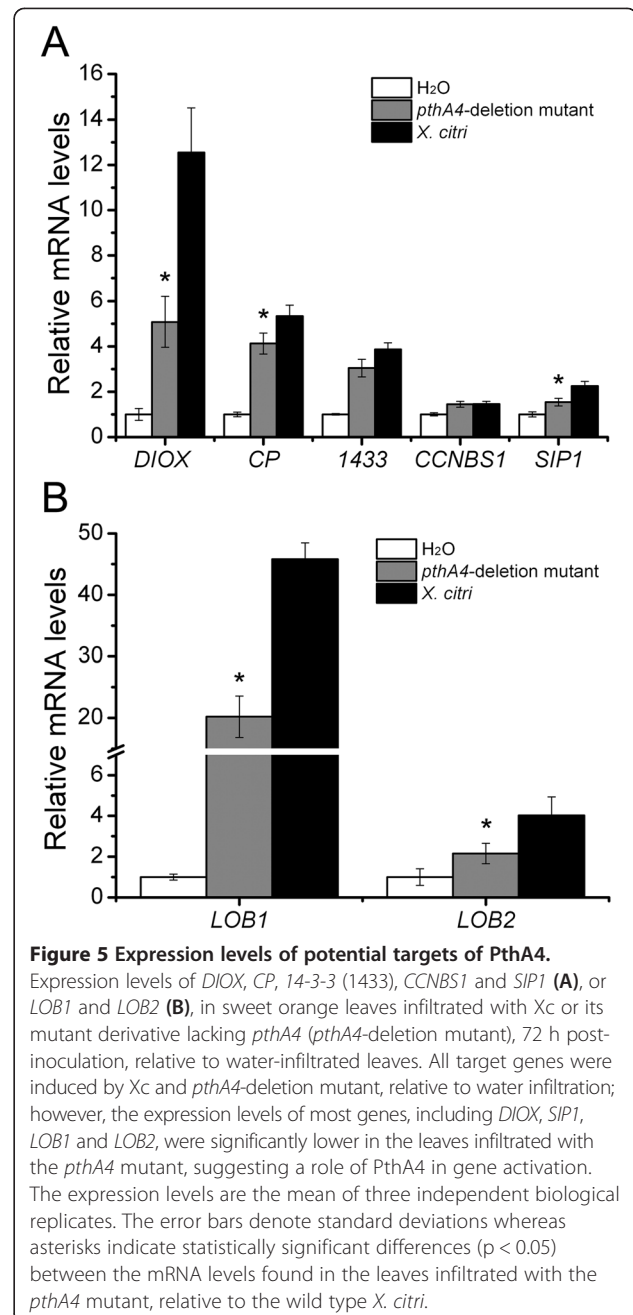
Including AvrBs3, several TAL effectors bind to EBEs that overlap with TATA-like sequences [6-8,29]. In some cases this causes a downstream shift of the transcriptional start site in the targeted gene, suggesting that TAL effectors might have a similar function of TATA-binding proteins [6-10]. Here, we found that approximately 73% of the predicted EBEs for PthA“s” and PthC“s” localize between 16 and 300 bp upstream the translation start codon of the genes (Additional file 5). This observation and a recent study in rice suggesting that TAL effectors of *X. oryzae* are predicted to bind within 300 bp upstream the start codon and frequently overlap with TATA-box elements of the promoter [24], prompted us to evaluate whether the overlap or close proximity between TATA boxes and EBE positions, also occurs for TAL effectors of Xc and XaC in citrus promoters. We found that most of the EBEs predicted for PthA“s” and PthC“s” show a tendency to overlap with, or localize within 30 bp of putative TATA-box elements (Figure 6 and Additional file 5). For instance, in five of the candidate targets (*LOB1*, *LOB2*, *AE146*, *CCNBS1* and *CDPK*) the EBEs overlapped with a putative TATA box (Additional file 5). Thus, our data suggest that despite the RVD variations among these TAL effectors, they are likely to have an evolutionary selection pressure towards the targeting of TATA-rich regions of host sequences that are critical for the transcriptional regulation.

Discussion

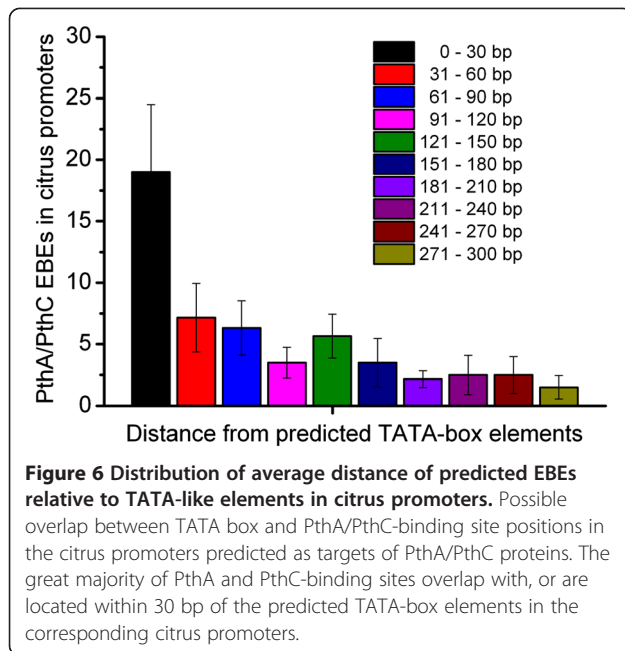
Despite the fact that many TAL effectors targets and their molecular functions have been coming to light in recent years [3,6-11,74,75], citrus genes directly activated by PthA“s” or PthC“s” effectors, and their role in canker development or host defense against *Xanthomonas spp.*, remain poorly characterized. In this study, we have identified a number of genes putatively targeted by PthA“s” and PthC“s” in sweet orange, and shown that most of them impinge on disease and/or host defense responses. We also observed that PthA2 and PthA4, yet bearing distinct



RVDs composition (Figure 1B), exhibit functional convergence, in particular to regulate genes of the auxin and gibberellin synthesis and response pathways, as well as their downstream signaling cascade genes like those for cell wall remodeling, cell division and expansion. In citrus, targeting these hormonal pathways appear to be the headline of canker-causing *Xanthomonas spp.* since endogenous auxin



and gibberellin are required for initial canker formation in leaves infiltrated with the pathogen, and the exogenous application of the hormones transcriptionally regulate specific genes also induced by *Xc* during the onset of infection [26,27]. How these hormones contribute to the canker disease needs further exploration, but it is clear their relationship with the canker symptoms, hypertrophy and hyperplasia of mesophyll cells [2], which generate enough internal pressure to prompt the epidermal rupture and facilitate pathogen release to the leaf surface for disease propagation [21,27]. Besides, auxin also increase the



host susceptibility on other plant-pathogen interactions [76-79], pointing it out as a conserved mechanism of biotrophic microbes to elicit cell wall softening to e.g., leak nutrients from the host cell, and/or to improve effectors translocation that promote host susceptibility and bacterial fitness. Overall, it is tempting to speculate that, in the case of the citrus canker pathogens, manipulating the auxin signaling pathway via TAL effector-targeting would be an effective way to disarm host defense responses for bacterial survival and pathogenicity. Notably, many of the AvrBs3 up-regulated (*UPA*) genes are also auxin-responsive and some of them including *upa7*, *upa15*, *upa17* and *upa20*, are known to enhance cell hypertrophy and the synthesis of cell-wall polymers [8,10,31].

These data reflect on recent studies suggesting that the redundancy and convergence in TAL effector repertoires occurring within and across *X. oryzae* strains, respectively, may be a conserved feature of TAL effector evolution as a consequence of an arms race of the host-bacteria interaction [24,25]. The biological meaning of such functional redundancy of TAL effectors in strain 306, particularly between PthA2 and PthA4, denote a cooperative, or eventually a synergistic role of these effectors as transcriptional activators (Figures 3, 4, 5, Additional files 2 and 5). In addition, it is interesting to note that PthA2 physically interacts with PthA4, and that both proteins bind independently to the C-terminal domain of RNA Pol II [37]. Hence, TAL effector-mediated transcriptional regulation in citrus appears to be further influenced by the multiple protein-protein interactions occurring at the assembly locus of RNA Pol II. According with this assumption, the up-regulation of *LOB1* and *LOB2* in

epicotyls expressing PthA2 or PthA4 (Figure 4B), and in sweet orange leaves infiltrated with Xc or its *pthA4* mutant derivative (Figure 5B), emerges as an evident example of a redundant targeting of a presumably major gene for canker susceptibility. We also predicted another gene encoding a LOB-domain protein targeted by PthA3, orange1.1g048558m.g (Additional file 5). Interestingly, *LOB* genes have been associated to auxin signaling pathways, including cell growth control and organ development [56,71,80]. From an evolutionary point of view, it seems advantageous for a single Xc strain to target a family of potential susceptibility genes, i.e. *LOB* genes with different TAL effectors, which function cooperatively or synergistically, because it will assure the induction of the critical set of genes involved in disease symptoms development. The observation is convincing since it implies a mechanism that the pathogen uses to overcome potential natural polymorphisms in TAL effector targeted promoters, in particular those occurring in susceptibility genes among different host varieties [6].

Beyond the functional redundancy of Xc TAL effectors, we found that PthA4 predominantly induce genes encoding ribosomal proteins and proteins of cell division and growth, like kinesins, tubulins and histones (Additional file 2). This is noteworthy because PthA4 also physically interacts with the citrus MAF1 protein (CsMAF1), which is a negative regulator of RNA Pol III that controls ribosome biogenesis and suppresses canker symptoms [23,36]. Thus, the specific PthA4-induction of ribosomal protein genes appears to be a causal feedback mechanism of ribosome biogenesis that is required for cell division and growth. On the other hand, although PthA2 does not interact with CsMAF1, it binds to and inhibits the prolyl-isomerase activity of the citrus cyclophilin CsCYP, a putative negative regulator of the RNA Pol II complex [23,35,37,81]. Therefore, it remains to be determined how these protein specific interactions between TAL effectors and components of RNA Pol II and III complexes affect the outcome of the host expression profiles in response to bacterial infection.

In contrast to PthA“s”-induced genes, epicotyls expressing PthC1 showed a general down-regulation of auxin and gibberellin response genes suggesting that this TAL effector is not an elicitor of susceptibility. For instance, *LOB1* that is induced by PthA4, appears significantly down-regulated by PthC1 (Figure 4B), which is consistent with the PthC1-mediated repression of auxin response genes, since LOB proteins have also been implicated in auxin signaling [80,82]. However, it remains to be determined whether the general down-regulation of the auxin responsive genes by PthC1 in sweet orange is the major cause for the lack of host susceptibility (i.e. no hyperplastic lesions) after infiltration of sweet orange with XaC [26].

In pepper plants ecotype ECW-30, the *Bs3* resistance gene induced by the *X. vesicatoria* TAL effector AvrBs3, executes an HR response after bacterial infiltration [7]. Our computational analyses have predicted EBEs of PthC1 in the promoters of two sweet orange genes orthologous to *Bs3*, orange1.1g035488m.g and orange1.1g035902m.g (Additional file 5); however, we were not able to detect their expression in response to PthC1 or after XaC infiltration (Additional file 3), and neither were they detected by any other gene expression analyses we conducted before i.e., differential display PCR and suppression subtractive hybridization [26]. Besides, though the results discussed above indicate that XaC cannot induce host susceptibility, we do not yet discard the possibility that an HR-like elicitor is mediating the sweet orange defense against XaC.

It has been verified and predicted that nodulin and flavone-3-hydroxylase (*F3H*) genes, respectively, represent common targets of *Xanthomonas* ssp. TAL effectors [11,24,25]. Here, we found four nodulin-related genes, which are significantly up-regulated in sweet orange leaves infiltrated with Xc in the presence of Ch, DN620509, or in epicotyls expressing PthA2, CX675781, and PthA4, DN958192 and CV710110. However, we were not able to predict EBEs for PthA“s” in their promoters suggesting a potential gap for false negative predictions of computational analyses, or eventually indicating that their induction is consequential of other primary targets of the TAL effectors. On the other hand, we predicted EBEs of PthA and/or PthC in the promoters of the nodulin-related genes orange1.1g007766m.g and orange1.1g042021m.g, but none of these genes were up-regulated in our microarray dataset (Additional files 1, 2 and 5).

One of the predicted targets of PthA4 is the citrus dioxygenase gene *DIOX* (Table 1, Figures 3B and 5A, Additional file 5) that is similar to the rice gene *F3H*, also a predicted target of TAL effectors from *X. oryzae* strains [25]. Although the *F3H* was linked to flavonoid biosynthesis [25], both *F3H* and *DIOX* are similar to Gibberellin-20-Oxidases (*GA20ox*), a group of enzymes that catalyze gibberellin biosynthesis [83]. Interestingly, as observed for the *LOB* genes, a citrus gene encoding a putative *GA20* oxidase (orange1.1g019643m.g) was identified as a target of PthA1, PthA2 and PthA3 (Additional file 5). This protein has the same domain architecture found in *DIOX*, which suggests they are functional orthologs. In addition, both PthA4 and PthC1 transactivate a regulator of gibberellin synthesis namely *14-3-3*, and a *SIP1* gene in epicotyls (Figure 3) whose protein products interact with a SELF-PRUNING factor involved in the control plant architecture and flowering of tomato [58,66,84]. These evidences together support the susceptibility effect of inducing gibberellin genes during the process of infection.

Another outcome of our study is the proximity of the predicted EBEs relative to putative TATA boxes of

promoter regions (Figure 6). This is in line with the fact that EBEs for *X. oryzae* TAL effectors have been also identified close to TATA elements in rice promoters [6]. Similarly, AvrBs3 binding sites are found within 100 bp upstream of the transcription start site [10], raising the idea that TAL effectors might functionally replace general TATA-binding factors, as recently proposed [24]. In addition, our data indicates that TAL effectors can function as transcriptional repressors, in particular PthC1, as discussed above (Additional files 2 and 3; Figures 3 and 4).

Conclusion

In conclusion, we have identified candidate targets of PthA“s” and PthC“s” in citrus that will not only strengthen our understanding on canker symptoms formation, but also provide novel information about host susceptibility or defenses against *Xanthomonas* pathogens, which will assist in the selection and generation of canker resistant plants.

Methods

Bacterial strains, plasmids and growth conditions

PthA2 and PthA4 were amplified from the Xc strain 306 [85] and cloned into pET28a and pBI121 for bacteria and plant expression, as previously described [35]. Plasmids were introduced into *E. coli* strain DH5alpha and/or *Agrobacterium tumefaciens* strain EHA105 by electroporation. *E. coli* cells were incubated at 37°C in Luria-Bertani (LB) medium, whereas Xc and *A. tumefaciens* were grown in LB without NaCl at 28°C and in YEP (Bacto peptone 10 g/l, NaCl 5 g/l, Yeast extract 10 g/l, and Agar 15 g/l) at 30°C, respectively [86]. Bacterial cultures were grown at different time periods until they reached the desired optical densities. Antibiotics were added to the media in the following final concentrations: ampicillin, 100 µg/ml; kanamycin, 50 µg/ml; rifampicin, 50 µg/ml; streptomycin, 25 µg/ml.

Plant material, bacterial infiltration

Six-month-old plants of sweet orange “Pera” were obtained from certified nurseries and kept in a growth room at 25–28°C with a 14 h light photoperiod. For plant infiltration, Xc strains were inoculated from single colony plates and grown over night at 28°C in liquid LB without NaCl. Cells colonies were suspended in sterile water to an optical density at 600 nm (OD_{600}) of 0.1 (nearly 10^6 CFU/ml). Leaves were infiltrated with bacterial suspensions in water or, in 50 µM cycloheximide (Ch) (Sigma-Aldrich, USA). Water and Ch only were independently infiltrated as mock controls. For quantitative PCR (qPCR) assays, fully expanded “Pera” leaves were infiltrated with a water suspension ($OD_{600} = 0.1$) of wild type Xc strain 306, or its *pthA4*-deletion mutant derivative [23].

Cloning TAL effectors from *X. aurantifolii*

PthC genes were PCR amplified using total DNA extracted from the XaC strain ICMP 8435 [26] as template. Primers targeting conserved 5' and 3' regions were designed based on the four available Xc *pthA* genes (5'-CATATGGATCC CATTCGTTTCG-3' and 5'-GAATTCTCACTGAGGCAA TAGCTC-3'). PCR products were amplified using the Pfu turbo DNA polymerase in a 50 µL reaction, following the supplier's instructions (Stratagene, USA), with an annealing temperature of 52°C and extension time of 4 min. PCR products were gel-purified and cloned into of pET28a vector using the restriction sites *NdeI/EcoRI*. At least twenty independent clones were analyzed by restriction mapping with *SspI* enzyme, or by DNA sequencing and only two different variants designated PthC1 and PthC2 were identified. None of the PthA effectors of Xc isolate 306 were found in our screening of XaC TAL effectors sequences.

Expression of *Xanthomonas* TAL effectors in citrus epicotyls

Agrobacterium strains transformed with pBI121 vector (bearing the *uidA* gene under the control of the CaMV 35S promoter) or its derivative carrying the TAL effectors *pthA2*, *pthA4* or *pthC1* in place of the *uidA* gene, were used to transform sweet orange. Epicotyls from young plantlets of *Citrus sinensis* 'Hamlin' were wounded, transversely sectioned and incubated at room temperature (21°C) for 15 minutes in a fresh suspension of *A. tumefaciens* (OD₆₀₀ = 0.6) containing 100 µM acetosyringone. Co-cultivation assays were conducted on semi-solid 1x Murashige and Skoog medium supplemented with 25 g/l sucrose, vitamin cocktail (10 mg/l thiamine-HCl, 10 mg/l pyridoxine, 1 mg/l nicotinic acid, 0.4 mg/l glycine), 100 mg/l of *myo*-inositol and 0.2 mg/l of 2,4-dichlorophenoxyacetic acid (pH 5.8) during 72 h in dark [87]. Transformation efficiency was confirmed by western blot analyses and histochemical GUS assay prior to RNA isolation for microarray and qPCR analysis.

Western blot detection of PthA/PthC expression

Citrus epicotyls transfected with the native pBI121 vector or, its derivatives carrying the effector genes *pthA2*, *pthA4* or *pthC1*, were grinded to homogeneity in SDS-PAGE sample buffer and resolved on a 10% SDS-polyacrylamide gel. The proteins were transferred onto PVDF membranes and probed with anti-PthA2 serum as previously described [35].

GUS assay

The *A. tumefaciens* strain EHA105 transformed with the pBI121 vector carrying the reporter gene *uidA*, which encodes beta-D-glucuronidase (GUS), was transfected in citrus epicotyls as described previously and the transient expression of GUS was tested using colorimetric assay 72 h after bacteria-tissue co-cultivation [88].

RNA isolation and microarray and RT-qPCR analysis

Messenger RNA (mRNA) was extracted from infiltrated leaves or from transformed epicotyls as described previously [26]. For microarray hybridization, approximately 0.6 µg of mRNA was used to synthesize cDNAs, which were subsequently used as template to generate the biotin-labeled complementary RNAs (cRNAs) using the One-Cycle target labeling assay (Affymetrix). GeneChips of citrus genome arrays (Affymetrix) were hybridized with cRNAs following standard instructions of Affymetrix kits. The hybridized arrays were rinsed, stained and scanned with an Affymetrix Genechip Scanner 3000-7G. Two CEL files per treatment, corresponding to biological replicates, were analyzed with the ArrayAssit software package (ArrayAssit x.5, Stratagene, USA) using the MAS5 algorithm.

Total RNA samples were prepared from sweet orange leaves infiltrated with Xc, its *pthA4*-deletion mutant, or water as control, 72 h after bacterial inoculation, using the Trizol method (Invitrogen, Carlsbad, CA) and subsequently treated with DNase I (Promega, Madison, WI). Nearly 10 µg of total RNA was reverse-transcribed using the Maxima First Strand cDNA Synthesis Kit (Fermentas) according to the supplier's instructions, and used as template in real-time qPCR reactions conducted in 96-well plates. Primer sequences (Additional file 6) corresponding to the *Citrus sinensis* genes listed in Table 1 were designed using the Primer Express 2.0 software (ABI, Foster City, CA). Each 25-µL qPCR reaction was composed by 12.5 µL of SYBR green 2× master mix (ABI, Foster City, CA), 1 µL of forward and reverse primer mix (7.5 µM), 1 µL of cDNA and 10.5 µL of diethyl pyrocarbonate-treated water. qPCR amplifications were carried out using the 7500 system "Universal" cycle condition in an ABI Prism 7300 instrument (Applied Biosystems, Foster City, CA). The *Citrus sinensis* gene encoding a malate translocator was selected as internal control for normalization [86]. Total RNA from three different leaves were used in qPCR reactions as independent biological replicates, and three technical replicates for each biological sample were considered for statistical T-tests to determine the significant changes of gene expression across the treatments.

In silico prediction of TAL effector binding sites

A position-specific weight matrix was designed based on the TAL code of associations frequencies between DNA bases and RVDs, and used to score putative effector binding elements (EBEs) of PthA1, PthA2, PthA3 and PthA4 of Xc strain 306, and PthC1 and PthC2 of XaC strain ICMP 8435, considering a thymidine (T) at position -1 of the EBE as preferential base [12,13]. The algorithm was used to perform systematic similarity searches within 1500 bp of promoter regions relative to the translation start site of genes annotated in the

genomes of *C. clementina* (<http://www.citrusgenomedb.org/species/clementina/genome1.0>) and *C. sinensis* (<http://www.citrusgenomedb.org/species/sinensis/genome1.0>). Identification of orthologous relationships between these two species was based on nucleotide sequence similarities (BLASTn) and best bidirectional hit (BBH) method [89,90]. Reciprocal sequence similarity searches between *C. clementina* and *C. sinensis* genes were performed using the BLASTn algorithm [91], with an E-value cutoff of 1×10^{-20} , and a homemade Perl script to parse both BLASTn outputs to identify the BBH BLAST relationships (Additional file 4). The search was performed using the MOODS algorithm [92], which provided a list of possible EBEs for the PthA/PthC TAL effectors with a corresponding score for each sequence. The p-value cutoff was set to 0.001 in order to reduce false positives prediction alignments.

The final set of *C. sinensis* promoters having one or more putative PthA/PthC binding sites (top 100 hits) was derived from a conserved region analysis between the *C. clementina* and *C. sinensis* orthologous promoters, an approach that is widely used to identify new regulatory motifs in many organisms [93-95]. Thus, only the citrus genes with PthA/PthC binding sites in both *C. sinensis* and *C. clementina* promoters were selected.

In silico TATA-box prediction

The DNA sequences corresponding to the promoters of *C. sinensis* genes having potential EBEs (top hits) were submitted to the Plant TATA-box prediction server using the TSSP program [96] at the <http://linux1.softberry.com/berry.phtml> site.

Availability of supporting data

The sequences of PthC1 and PthC2 were deposited in the GeneBank as ADI48327 and ADI48328 accessions, respectively. The microarray data files (Affymetrix CEL files) for all the experiments described here have been deposited to GEO under the superseries GSE51379.

Additional files

Additional file 1: Microarray analyses of sweet orange leaves infiltrated with Xc in the presence or absence of cycloheximide (Ch), 8 h after bacterial inoculation.

Additional file 2: Microarray analyses of sweet orange epicotyls expressing PthA2 or PthA4.

Additional file 3: Microarray analyses of sweet orange epicotyls expressing PthC1.

Additional file 4: Perl script developed to parse both BLASTn outputs to identify the best bidirectional hit (BBH) BLAST relationships.

Additional file 5: Top one hundred best scoring *C. sinensis* promoters with predicted EBEs for PthA and PthC proteins.

Additional file 6: List of primers used in the qPCR experiments.

Competing interests

The authors declare that they have no competing financial interest.

Authors' contribution

Conceived and designed the experiments: ALAP, MFC, RAC and CEB, Performed the experiments: ALAP, MFC, VYA, MLPO, MND, JCS and CEB, Analyzed the data: ALAP, MFC, VYA, MND, RAC and CEB, Wrote the paper: RAC and CEB. All authors read and approved the final manuscript.

Acknowledgements

This work was supported by São Paulo Research Foundation (FAPESP grants 2010/00634-1 and 2011/20468-1) and Conselho Nacional de Desenvolvimento Científico e Tecnológico (CNPq).

Author details

¹Laboratório Nacional de Biotecnologia, Centro Nacional de Pesquisa em Energia e Materiais, R. Giuseppe Máximo Scalfaro 10000, Campinas, SP 13083-970, Brazil. ²Departamento de Genética, Evolução e Bioagentes, Instituto de Biologia, Universidade Estadual de Campinas, Campinas, SP 13083-970, Brazil. ³Present address: U.S. Department of Agriculture, U.S. Horticultural Research Laboratory, 2001 South Rock Road, Fort Pierce, FL 34945, USA. ⁴Present address: Department of Plant Pathology and Plant-Microbe Biology, Cornell University, Ithaca, NY 14853, USA.

Received: 21 October 2013 Accepted: 18 February 2014

Published: 25 February 2014

References

1. Bonas U, Stall RE, Staskawicz B: Genetic and structural characterization of the avirulence gene *avrBs3* from *Xanthomonas campestris* pv. *vesicatoria*. *Mol Gen Genet* 1989, **218**:127-136.
2. Duan Y, Castañeda A, Zhao G, Erdos G, Gabriel D: Expression of a single, host-specific, bacterial pathogenicity gene in plant cells elicits division, enlargement, and cell death. *Mol Plant Microbe Interact* 1999, **12**:556-560.
3. Yang B, Sugio A, White FF: *Os8N3* is a host disease-susceptibility gene for bacterial blight of rice. *Proc Natl Acad Sci U S A* 2006, **103**:10503-10508.
4. Al-Saadi A, Reddy J, Duan Y, Brunings A, Yuan Q, Gabriel D: All five host-range variants of *Xanthomonas citri* carry one *pthA* homolog with 17.5 repeats that determines pathogenicity on citrus, but none determine host-range variation. *Mol Plant Microbe Interact* 2007, **20**:934-943.
5. Shiotani H, Fujikawa T, Ishihara H, Tsuyumu S, Ozaki K: A *pthA* homolog from *Xanthomonas axonopodis* pv. *citri* responsible for host-specific suppression of virulence. *J Bacteriol* 2007, **189**:3271-3279.
6. Antony G, Zhou J, Huang S, Li T, Liu B, White F, Yang B: Rice *xa13* recessive resistance to bacterial blight is defeated by induction of the disease susceptibility gene *Os-11 N3*. *Plant Cell* 2010, **22**:3864-3876.
7. Römer P, Hahn S, Jordan T, Strauss T, Bonas U, Lahaye T: Plant pathogen recognition mediated by promoter activation of the pepper *Bs3* resistance gene. *Science* 2007, **318**:645-648.
8. Kay S, Hahn S, Marois E, Hause G, Bonas U: A bacterial effector acts as a plant transcription factor and induces a cell size regulator. *Science* 2007, **318**:648-651.
9. Römer P, Strauss T, Hahn S, Scholze H, Morbitzer R, Grau J, Bonas U, Lahaye T: Recognition of *AvrBs3*-like proteins is mediated by specific binding to promoters of matching pepper *Bs3* alleles. *Plant Physiol* 2009, **150**:1697-1712.
10. Kay S, Hahn S, Marois E, Wieduwild R, Bonas U: Detailed analysis of the DNA recognition motifs of the *Xanthomonas* type III effectors *AvrBs3* and *AvrBs3Deltarep16*. *Plant J* 2009, **59**:859-871.
11. Yu Y, Streubel J, Balzergue S, Champion A, Boch J, Koenig R, Feng J, Verdier V, Szurek B: Colonization of rice leaf blades by an African strain of *Xanthomonas oryzae* pv. *oryzae* depends on a new TAL effector that induces the rice nodulin-3 *Os11N3* gene. *Mol Plant Microbe Interact* 2011, **24**:1102-1113.
12. Boch J, Scholze H, Schornack S, Landgraf A, Hahn S, Kay S, Lahaye T, Nickstadt A, Bonas U: Breaking the code of DNA binding specificity of TAL-type III effectors. *Science* 2009, **326**:1509-1512.
13. Moscou M, Bogdanove A: A simple cipher governs DNA recognition by TAL effectors. *Science* 2009, **326**:1501.
14. Murakami MT, Sforça ML, Neves JL, Paiva JH, Domingues MN, Pereira AL, Zerl AC, Benedetti CE: The repeat domain of the type III effector protein

- PthA shows a TPR-like structure and undergoes conformational changes upon DNA interaction. *Proteins* 2010, **78**:3386–3395.
15. Deng D, Yan C, Pan X, Mahfouz M, Wang J, Zhu JK, Shi Y, Yan N: **Structural basis for sequence-specific recognition of DNA by TAL effectors.** *Science* 2012, **335**:720–723.
 16. Mak AN, Bradley P, Cernadas RA, Bogdanove AJ, Stoddard BL: **The crystal structure of TAL effector PthXo1 bound to its DNA target.** *Science* 2012, **335**:716–719.
 17. Stella S, Molina R, Yefimenko I, Prieto J, Silva G, Bertoni C, Juillerat A, Zhuchateau P, Montoya G: **Structure of the AvrBs3-DNA complex provides new insights into the initial thymine-recognition mechanism.** *Acta Crystallogr D Biol Crystallogr* 2013, **69**:1707–1716.
 18. Li T, Huang S, Jiang WZ, Wright D, Spalding MH, Weeks DP, Yang B: **TAL nucleases (TALNs): hybrid proteins composed of TAL effectors and FokI DNA-cleavage domain.** *Nucleic Acids Res* 2011, **39**:359–372.
 19. Miller JC, Tan S, Qiao G, Barlow KA, Wang J, Xia DF, Meng X, Paschon DE, Leung E, Hinkley SJ, Dulay GP, Hua KL, Ankoudina I, Cost GJ, Urnov FD, Zhang HS, Holmes MC, Zhang L, Gregory PD, Rebar EJ: **A TALE nuclease architecture for efficient genome editing.** *Nat Biotechnol* 2011, **29**:143–148.
 20. Zhang F, Cong L, Lodato S, Kosuri S, Church GM, Arlotta P: **Efficient construction of sequence-specific TAL effectors for modulating mammalian transcription.** *Nat Biotechnol* 2011, **29**:149–153.
 21. Brunings AM, Gabriel DW: **Xanthomonas citri: breaking the surface.** *Mol Plant Pathol* 2003, **4**:141–157.
 22. Yan Q, Wang N: **High-throughput screening and analysis of genes of Xanthomonas citri subsp. citri involved in citrus canker symptom development.** *Mol Plant Microbe Interact* 2012, **25**:69–84.
 23. Soprano AS, Abe VY, Smetana JH, Benedetti CE: **Citrus MAF1, a repressor of RNA Pol III, binds the Xanthomonas citri canker elicitor PthA4 and suppresses citrus canker development.** *Plant Physiol* 2013, **163**:232–242.
 24. Grau J, Wolf A, Reschke M, Bonas U, Posch S, Boch J: **Computational predictions provide insights into the biology of TAL effector target sites.** *PLoS Comput Biol* 2013, **9**:e1002962.
 25. Pérez-Quintero AL, Rodríguez-R LM, Dereeper A, López C, Koebnik R, Szurek B, Cunnac S: **An improved method for TAL effectors DNA-binding sites prediction reveals functional convergence in TAL repertoires of Xanthomonas oryzae strains.** *PLoS One* 2013, **8**:e68464.
 26. Cernadas RA, Camillo LR, Benedetti CE: **Transcriptional analysis of the sweet orange interaction with the citrus canker pathogens Xanthomonas axonopodis pv. citri and Xanthomonas axonopodis pv. aurantifolii.** *Mol Plant Pathol* 2008, **9**:609–631.
 27. Cernadas RA, Benedetti CE: **Role of auxin and gibberellin in citrus canker development and in the transcriptional control of cell-wall remodeling genes modulated by Xanthomonas axonopodis pv. citri.** *Plant Sci* 2009, **177**:190–195.
 28. Depuydt S, Hardtke CS: **Hormone signalling crosstalk in plant growth regulation.** *Curr Biol* 2011, **21**:R365–R373.
 29. Gu K, Yang B, Tian D, Wu L, Wang D, Sreekala C, Yang F, Chu Z, Wang GL, White FF, Yin Z: **R gene expression induced by a type-III effector triggers disease resistance in rice.** *Nature* 2005, **435**:1122–1125.
 30. White FF, Yang B: **Host and pathogen factors controlling the rice-Xanthomonas oryzae interaction.** *Plant Physiol* 2009, **150**:1677–1686.
 31. Marois E, van den Ackerveken G, Bonas U: **The Xanthomonas type III effector protein AvrBs3 modulates plant gene expression and induces cell hypertrophy in the susceptible host.** *Mol Plant Microbe Interact* 2002, **15**:637–646.
 32. Tatsuki M, Haji T, Yamaguchi M: **The involvement of 1-aminocyclopropane-1-carboxylic acid synthase isogene, Pp-ACS1, in peach fruit softening.** *J Exp Bot* 2006, **57**:1281–1289.
 33. Tacken E, Ireland H, Gunaseelan K, Karunairetnam S, Wang D, Schultz K, Bowen J, Atkinson RG, Johnston JW, Putterill J, Hellens RP, Schaffer RJ: **The role of ethylene and cold temperature in the regulation of the apple POLYGALACTURONASE1 gene and fruit softening.** *Plant Physiol* 2010, **153**:294–305.
 34. Yin XR, Allan AC, Chen KS, Ferguson IB: **Kiwifruit EIL and ERF genes involved in regulating fruit ripening.** *Plant Physiol* 2010, **153**:1280–1292.
 35. Domingues MN, de Souza TA, Cernadas RA, de Oliveira ML, Docena C, Farah CS, Benedetti CE: **The Xanthomonas citri effector protein PthA interacts with citrus proteins involved in nuclear transport, protein folding and ubiquitination associated with DNA repair.** *Mol Plant Pathol* 2010, **11**:663–675.
 36. de Souza TA, Soprano AS, de Lira NP, Quaresma AJ, Pauletti BA, Paes Leme AF, Benedetti CE: **The TAL effector PthA4 interacts with nuclear factors involved in RNA-dependent processes including a HMG protein that selectively binds poly(U) RNA.** *PLoS One* 2012, **7**:e32305.
 37. Domingues MN, Campos BM, de Oliveira ML, de Mello UQ, Benedetti CE: **TAL effectors target the C-terminal domain of RNA polymerase II (CTD) by inhibiting the prolyl-isomerase activity of a CTD-associated cyclophilin.** *PLoS One* 2012, **7**:e41553.
 38. Bennett MJ, Marchant A, Green HG, May ST, Ward SP, Millner PA, Walker AR, Schulz B, Feldmann KA: **Arabidopsis AUX1 gene: a permease-like regulator of root gravitropism.** *Science* 1996, **1273**:948–950.
 39. de Billy F, Grosjean C, May S, Bennett M, Cullimore JV: **Expression studies on AUX1-like genes in Medicago truncatula suggest that auxin is required at two steps in early nodule development.** *Mol Plant Microbe Interact* 2001, **14**:267–277.
 40. Vandenbussche F, Petrášek J, Zádňíková P, Hoyerová K, Pesek B, Raz V, Swarup R, Bennett M, Zazimalová E, Benková E, van der Straeten D: **The auxin influx carriers AUX1 and LAX3 are involved in auxin-ethylene interactions during apical hook development in Arabidopsis thaliana seedlings.** *Development* 2010, **137**:597–606.
 41. Dereeper A, Guignon V, Blanc G, Audic S, Buffet S, Chevenet F, Dufayard JF, Guindon S, Lefort V, Lescot M, Claverie JM, Gascuel O: **Phylogeny.fr: robust phylogenetic analysis for the non-specialist.** *Nucleic Acids Res* 2008, **36**(Web Server issue):W465–W469.
 42. Du Z, Zhou X, Ling Y, Zhang Z, Su Z: **agriGO: a GO analysis toolkit for the agricultural community.** *Nucleic Acids Res* 2010, **38**(Web Server issue):W64–W70.
 43. Nishimura R, Ohmori M, Fujita H, Kawaguchi M: **A Lotus basic leucine zipper protein with a RING-finger motif negatively regulates the developmental program of nodulation.** *Proc Natl Acad Sci U S A* 2002, **99**:15206–15210.
 44. Wang H, Jones B, Li Z, Frasse P, Delalande C, Regad F, Chaabouni S, Latché A, Pech JC, Bouzayan M: **The tomato Aux/IAA transcription factor IAA9 is involved in fruit development and leaf morphogenesis.** *Plant Cell* 2005, **17**:2676–2692.
 45. Weller JL, Hecht V, Vander Schoor JK, Davidson SE, Ross JJ: **Light regulation of gibberellin biosynthesis in pea is mediated through the COP1/HY5 pathway.** *Plant Cell* 2009, **21**:800–813.
 46. Zhang Z, Li Q, Li Z, Staswick P, Wang M, Zhu Y, He Z: **Dual regulation role of GH3.5 in salicylic acid and auxin signaling during Arabidopsis-Pseudomonas syringae interaction.** *Plant Physiol* 2007, **145**:450–464.
 47. Zhou J, Tang X, Martin GB: **The Pto kinase conferring resistance to tomato bacterial speck disease interacts with proteins that bind a cis-element of pathogenesis-related genes.** *EMBO J* 1997, **16**:3207–3218.
 48. Doyle EL, Booher NJ, Standage DS, Voytas DF, Brendel VP, Vandyk JK, Bogdanove AJ: **TAL Effector-Nucleotide Targeter (TALE-NT) 2.0: tools for TAL effector design and target prediction.** *Nucleic Acids Res* 2012, **40**:W117–W122.
 49. Nambara E, Keith K, McCourt P, Naito S: **A regulatory role for the ABI3 gene in the establishment of embryo maturation in Arabidopsis thaliana.** *Development* 1995, **121**:629–636.
 50. Nitsch LM, Oplaat C, Feron R, Ma Q, Wolters-Arts M, Hedden P, Mariani C, Vriezen WH: **Abscisic acid levels in tomato ovaries are regulated by LeNCED1 and SlCYP707A1.** *Planta* 2009, **229**:1335–1346.
 51. Zeng Y, Zhao T, Kermod AR: **A conifer ABI3-interacting protein plays important roles during key transitions of the plant life cycle.** *Plant Physiol* 2013, **161**:179–195.
 52. Noël LD, Denancé N, Szurek B: **Predicting promoters targeted by TAL effectors in plant genomes: from dream to reality.** *Front Plant Sci* 2013, **4**:333.
 53. Tao LZ, Cheung AY, Wu HM: **Plant Rac-like GTPases are activated by auxin and mediate auxin-responsive gene expression.** *Plant Cell* 2002, **14**:2745–2760.
 54. Sun A, Tawfik O, Gayed B, Thrasher JB, Hoestje S, Li C, Li B: **Aberrant expression of SWI/SNF catalytic subunits BRG1/BRM is associated with tumor development and increased invasiveness in prostate cancers.** *Prostate* 2007, **67**:203–213.
 55. O'Donoghue EM, Somerfield SD, Sinclair BK, Coupe SA: **Xyloglucan endotransglycosylase: a role after growth cessation in harvested asparagus.** *Aust J Plant Physiol* 2001, **28**:349–361.
 56. Husbands A, Bell EM, Shuai B, Smith HM, Springer PS: **LATERAL ORGAN BOUNDARIES defines a new family of DNA-binding transcription factors**

- and can interact with specific bHLH proteins. *Nucleic Acids Res* 2007, **35**:6663–6671.
57. Fraissinet-Tachet L, Baltz R, Chong J, Kauffmann S, Fritig B, Saindrenan P: **Two tobacco genes induced by infection, elicitor and salicylic acid encode glucosyltransferases acting on phenylpropanoids and benzoic acid derivatives, including salicylic acid.** *FEBS Lett* 1998, **437**:319–323.
58. Igarashi D, Ishida S, Fukazawa J, Takahashi Y: **14-3-3 proteins regulate intracellular localization of the bZIP transcriptional activator RSG.** *Plant Cell* 2001, **13**:2483–2497.
59. Zhang ZT, Zhou Y, Li Y, Shao SQ, Li BY, Shi HY, Li XB: **Interactome analysis of the six cotton 14-3-3 s that are preferentially expressed in fibres and involved in cell elongation.** *J Exp Bot* 2010, **61**:3331–3344.
60. Moriuchi H, Okamoto C, Nishihama R, Yamashita I, Machida Y, Tanaka N: **Nuclear localization and interaction of RoLB with plant 14-3-3 proteins correlates with induction of adventitious roots by the oncogene rolB.** *Plant J* 2004, **38**:260–275.
61. Vialart G, Hehn A, Olry A, Ito K, Krieger C, Larbat R, Paris C, Shimizu B, Sugimoto Y, Mizutani M, Bourgaud F: **A 2-oxoglutarate-dependent dioxygenase from *Ruta graveolens* L. exhibits p-coumaroyl CoA 2'-hydroxylase activity (C2'H): a missing step in the synthesis of umbelliferone in plants.** *Plant J* 2012, **70**:460–470.
62. Itoh H, Tanaka-Ueguchi M, Kawaide H, Chen X, Kamiya Y, Matsuoka M: **The gene encoding tobacco gibberellin 3beta-hydroxylase is expressed at the site of GA action during stem elongation and flower organ development.** *Plant J* 1999, **20**:15–24.
63. Beyene G, Foyer CH, Kunert KJ: **Two new cysteine proteinases with specific expression patterns in mature and senescent tobacco (*Nicotiana tabacum* L.) leaves.** *J Exp Bot* 2006, **57**:1431–1443.
64. Zhang XM, Wang Y, Lv XM, Li H, Sun P, Lu H, Li FL: **NtCSP56, a new cysteine protease in *Nicotiana tabacum* L., involved in pollen grain development.** *J Exp Bot* 2009, **60**:1569–1577.
65. Yang ZN, Ye XR, Molina J, Roose ML, Mirkov TE: **Sequence analysis of a 282-kilobase region surrounding the citrus Tristeza virus resistance gene (Ctv) locus in *Poncirus trifoliata* L.** *Raf. Plant Physiol* 2003, **131**:482–492.
66. Pnueli L, Gutfinger T, Hareven D, Ben-Naim O, Ron N, Adir N, Lifschitz E: **Tomato SP-interacting proteins define a conserved signaling system that regulates shoot architecture and flowering.** *Plant Cell* 2001, **13**:2687–2702.
67. Raíces M, Gargantini PR, Chinchilla D, Crespi M, Téllez-Iñón MT, Ulloa RM: **Regulation of CDPK isoforms during tuber development.** *Plant Mol Biol* 2003, **52**:1011–1024.
68. Chen Y, Liu Z, Halterman DA: **Molecular determinants of resistance activation and suppression by *Phytophthora infestans* effector IPI-0.** *PLoS Pathog* 2012, **8**:e1002595.
69. Radwan O, Mouzeyar S, Nicolas P, Bouzidi MF: **Induction of a sunflower CC-NBS-LRR resistance gene analogue during incompatible interaction with *Plasmodium halstedii*.** *J Exp Bot* 2005, **56**:567–575.
70. Durrant WE, Rowland O, Piedras P, Hammond-Kosack KE, Jones JD: **cDNA-AFLP reveals a striking overlap in race-specific resistance and wound response gene expression profiles.** *Plant Cell* 2000, **12**:963–977.
71. Yordanov YS, Regan S, Busov V: **Members of the LATERAL ORGAN BOUNDARIES DOMAIN transcription factor family are involved in the regulation of secondary growth in *Populus*.** *Plant Cell* 2010, **22**:3662–3677.
72. Gao H, Wu X, Chai J, Han Z: **Crystal structure of a TALE protein reveals an extended N-terminal DNA binding region.** *Cell Res* 2012, **22**:1716–1720.
73. Meckler JF, Bhakta MS, Kim MS, Ovadia R, Habrian CH, Zykovich A, Yu A, Lockwood SH, Morbitzer R, Elsässer J, Lahaye T, Segal DJ, Baldwin EP: **Quantitative analysis of TALE-DNA interactions suggests polarity effects.** *Nucleic Acids Res* 2013, **41**:4118–4128.
74. Sugio A, Yang B, Zhu T, White FF: **Two type III effector genes of *Xanthomonas oryzae* pv. *oryzae* control the induction of the host genes OsTFIIA1 and OsTFX1 during bacterial blight of rice.** *Proc Natl Acad Sci U S A* 2007, **104**:10720–10725.
75. Streubel J, Pesce C, Hutin M, Koebnik R, Boch J, Szurek B: **Five phylogenetically close rice SWEET genes confer TAL effector-mediated susceptibility to *Xanthomonas oryzae* pv. *oryzae*.** *New Phytol* 2013, **200**:808–819.
76. Domingo C, Andrés F, Tharreau D, Iglesias DJ, Talón M: **Constitutive expression of OsGH3.1 reduces auxin content and enhances defense response and resistance to a fungal pathogen in rice.** *Mol Plant Microbe Interact* 2009, **22**:201–210.
77. Navarro L, Dunoyer P, Jay F, Arnold B, Dharmasiri N, Estelle M, Voinnet O, Jones JD: **A plant miRNA contributes to antibacterial resistance by repressing auxin signaling.** *Science* 2006, **312**:436–439.
78. Wang D, Pajerowska-Mukhtar K, Culler AH, Dong X: **Salicylic acid inhibits pathogen growth in plants through repression of the auxin signaling pathway.** *Curr Biol* 2007, **17**:1784–1790.
79. Fu J, Liu H, Li Y, Yu H, Li X, Xiao J, Wang S: **Manipulating broad-spectrum disease resistance by suppressing pathogen-induced auxin accumulation in rice.** *Plant Physiol* 2011, **155**:589–602.
80. Liu H, Wang S, Yu X, Yu J, He X, Zhang S, Shou H, Wu P: **ARL1, a LOB-domain protein required for adventitious root formation in rice.** *Plant J* 2005, **43**:47–56.
81. Campos BM, Sforça ML, Ambrosio AL, Domingues MN, Brasil de Souza T de A, Barbosa JA, Paes Leme AF, Perez CA, Whittaker SB, Murakami MT, Zeri AC, Benedetti CE: **A redox 2-cys mechanism regulates the catalytic activity of divergent cyclophilins.** *Plant Physiol* 2013, **162**:1311–1323.
82. Inukai Y, Sakamoto T, Ueguchi-Tanaka M, Shibata Y, Gomi K, Umemura I, Hasegawa Y, Ashikari M, Kitano H, Matsuoka M: **Crown rootless1, which is essential for crown root formation in rice, is a target of an AUXIN RESPONSE FACTOR in auxin signaling.** *Plant Cell* 2005, **17**:1387–1396.
83. Gallego-Giraldo L, García-Martínez JL, Moritz T, López-Díaz I: **Flowering in tobacco needs gibberellins but is not promoted by the levels of active GA1 and GA4 in the apical shoot.** *Plant Cell Physiol* 2007, **48**:615–625.
84. Nakata M, Yuasa T, Takahashi Y, Ishida S: **CDPK1, a calcium-dependent protein kinase, regulates transcriptional activator RSG in response to gibberellins.** *Plant Signal Behav* 2009, **4**:372–374.
85. da Silva A, Ferro JA, Reinach FC, Farah CS, Furlan LR, Quaggio RB, Monteiro-Vitorello CB, Van Sluys MA, Almeida NF, Alves LM, do Amaral AM, Bertolini MC, Camargo LE, Camarotte G, Cannavan F, Cardozo J, Chambergo F, Ciapina LP, Cicarelli RM, Coutinho LL, Cursino-Santos JR, El-Dorry H, Faria JB, Ferreira AJ, Ferreira RC, Ferro MI, Formighieri EF, Franco MC, Greggio CC, Gruber A, et al: **Comparison of the genomes of two *Xanthomonas* pathogens with differing host specificities.** *Nature* 2002, **417**:459–463.
86. de Oliveira ML, Lima Silva CC, Abe VY, Costa MG, Cernadas RA, Benedetti CE: **Increased resistance against citrus canker mediated by a citrus MAP kinase.** *Mol Plant Microbe Interact* 2013, **26**:1190–1199.
87. de Oliveira MLP, Febres VJ, Costa MGC, Moore GA, Otoni WC: **High-efficiency *Agrobacterium*-mediated transformation of citrus via sonication and vacuum infiltration.** *Plant Cell Rep* 2009, **28**:387–395.
88. Jefferson RA, Kavanagh TA, Bevan MW: **GUS fusions: beta-glucuronidase as a sensitive and versatile gene fusion marker, in higher plants.** *EMBO J* 1987, **6**:3901–3907.
89. Altenhoff AM, Dessimoz C: **Phylogenetic and functional assessment of orthologs inference projects and methods.** *PLoS Comput Biol* 2009, **5**:e1000262.
90. Wolf YI, Koonin EV: **A tight link between orthologs and bidirectional best hits in bacterial and archaeal genomes.** *Genome Biol Evol* 2012, **4**:1286–1294.
91. Altschul SF, Gish W, Miller W, Myers EW, Lipman DJ: **Basic local alignment search tool.** *J Mol Biol* 1990, **215**:403–410.
92. Korhonen J, Martinmäki P, Pizzi C, Rastas P, Ukkonen E: **MOODS: fast search for position weight matrix matches in DNA sequences.** *Bioinformatics* 2009, **25**:3181–3182.
93. Solovyev VV, Shahmuradov IA: **PromH: promoters identification using orthologous genomic sequences.** *Nucleic Acids Res* 2003, **31**:3540–3545.
94. Blanco E, Messeguer X, Smith TF, Guigó R: **Transcription factor map alignment of promoter regions.** *PLoS Comput Biol* 2006, **2**:e49.
95. Roy S, Kagda M, Judelson HS: **Genome-wide prediction and functional validation of promoter motifs regulating gene expression in spore and infection stages of *Phytophthora infestans*.** *PLoS Pathog* 2013, **9**:e1003182.
96. Shahmuradov IA, Solovyev VV, Gammerman AJ: **Plant promoter prediction with confidence estimation.** *Nucleic Acids Res* 2005, **33**:1069–1076.

doi:10.1186/1471-2164-15-157

Cite this article as: Pereira et al.: Identification of putative TAL effector targets of the citrus canker pathogens shows functional convergence underlying disease development and defense response. *BMC Genomics* 2014 **15**:157.