

RESEARCH ARTICLE

Open Access

# Peripheral blood lymphocyte/monocyte ratio at the time of first relapse predicts outcome for patients with relapsed or primary refractory diffuse large B-cell lymphoma

Yan-Li Li<sup>1</sup>, Kang-Sheng Gu<sup>2</sup>, Yue-Yin Pan<sup>2</sup>, Yang Jiao<sup>2</sup> and Zhi-Min Zhai<sup>1\*</sup>

## Abstract

**Background:** Despite the use of modern immunochemotherapy regimens, a significant proportion of diffuse large B-cell lymphoma (DLBCL) patients will relapse. We proposed absolute lymphocyte count/absolute monocyte count ratio (ALC/AMC ratio) as a new prognostic factor in relapsed or primary refractory DLBCL.

**Methods:** We retrospectively analyzed 163 patients who have been diagnosed with relapsed or primary refractory DLBCL. The overall survival (OS) and progression-free survival (PFS) were measured from the time of first relapse. The Cox proportional hazards model was used to evaluate ALC/AMC ratio as prognostic factors for OS and PFS.

**Results:** On univariate and multivariate analysis performed with factors included in the saalPI, early relapse, prior exposure to rituximab and autologous stem-cell transplantation (ASCT), the ALC/AMC ratio at the time of first relapse remained an independent predictor of PFS and OS (PFS:  $P < 0.001$ ; OS:  $P < 0.001$ ). Patients with lower ALC/AMC ratio ( $< 2.0$ ) had lower overall response rate, 1-year PFS and 2-year OS rate compared with those with higher ALC/AMC ratio ( $\geq 2.0$ ). Moreover, the ALC/AMC ratio can provide additional prognostic information when superimposed on the saalPI.

**Conclusions:** Lower ALC/AMC ratio at the time of first relapse is a adverse prognostic factor for OS and PFS in relapsed or primary refractory DLBCL, and leads to the identification of high-risk patients otherwise classified as low/intermediate risk by the saalPI alone.

**Keywords:** Absolute lymphocyte count/absolute monocyte count ratio, Diffuse large B-cell lymphoma, Relapse, SaalPI, Survival

## Background

Diffuse large B-cell lymphoma (DLBCL) is the most common, accounts for 25%-30% of all newly diagnosed cases of adult Non-Hodgkin lymphoma (NHL). It is an aggressive lymphoma, but is potentially curable [1]. Despite the improvements in overall survival of patients with DLBCL with the routine addition of rituximab therapy; approximately one-third of the patients will develop relapsed/refractory disease that remains a major cause of morbidity and mortality [2]. Salvage chemotherapy

followed by high-dose therapy and autologous stem-cell transplantation (ASCT) is the standard treatment for chemosensitive relapsed DLBCL [3]. Various parameters that greatly affect the results of salvage treatment in patients who have experienced relapse have been reported. From the Collaborative Trial in Relapsed Aggressive Lymphoma (CORAL) study, early relapse less than 12 months after diagnosis, the International Prognostic Index at relapse (saalPI) and prior exposure to rituximab were detected as the parameters that affected 3-year event-free survival (EFS), progression-free survival (PFS), and overall survival (OS) [4].

Lymphocytes have an important role in immune surveillance in NHL, a view supported by the observation

\* Correspondence: zzm889@163.com

<sup>1</sup>Department of Hematology, The Second Affiliated Hospital of Anhui Medical University, Hefei, Anhui 230601, People's Republic of China  
Full list of author information is available at the end of the article

that lymphopenia is an adverse prognostic factor in NHL of various subtypes, including DLBCL [5-7]. Monocytes, which are considered immunologically relevant and are regarded as a surrogate marker of the tumor microenvironment, were also recently reported to be a prognostic factor in DLBCL [8-11], follicular lymphoma (FL) [12,13], T-cell lymphoma [14], extranodal natural killer/T-cell lymphoma (ENKL) [15] and Hodgkin's Lymphoma (HL) [16,17]. Absolute lymphocyte count/absolute monocyte count ratio (ALC/AMC ratio) at diagnosis, as a simple biomarker combining an estimate of host immune homeostasis and tumor microenvironment, was recently shown to be an independent prognostic indicator in HL [16,17] and DLBCL [10,11]. However, to our best knowledge, there is no data available on whether the ALC/AMC ratio at the time of first relapse predicts outcome in patients with relapsed/primary refractory DLBCL. We, therefore, assessed the prognostic significance of ALC/AMC ratio at the time of first relapse.

## Methods

### Ethics statement

This study was approved by the Institutional Review Board (IRB) of the first affiliated and the second affiliated hospital of Anhui medical university. Study was performed in accord with the principles of the Declaration of Helsinki. All patients agreed to use their medical records for research.

### Patients

Consecutive 253 patients with DLBCL who had the full information, were evaluated and treated with CHOP (cyclophosphamide, hydroxydaunorubicin, vincristine, prednisone) or R-CHOP (rituximab-cyclophosphamide, hydroxydaunorubicin, vincristine, prednisone) every 3 weeks for 3 to 8 cycles as first-line therapy and followed up between the years 2001 and 2011 at the first affiliated hospital and the second hospital of Anhui medical university, and 163 patients of them who had been diagnosed with relapsed/primary refractory. The patients who achieved CR/uCR/PR after second-line salvage chemotherapy entered the follow-up or ASCT, and the patients with no response after second-line salvage chemotherapy entered the clinical trial or supportive care. Second-line salvage chemotherapy regimens were: DHAP/R-DHAP (dexamethasone, cytarabine, and cisplatin/rituximab, dexamethasone, cytarabine, and cisplatin); DICE/R-DICE (dexamethasone, ifosfamide, cisplatin, and etoposide/rituximab, dexamethasone, ifosfamide, cisplatin, and etoposide); ICE/R-ICE (ifosfamide, carboplatin, and etoposide/rituximab, ifosfamide, carboplatin, and etoposide); GDP/R-GDP (gemcitabine, cisplatin, and dexamethasone/rituximab, gemcitabine, cisplatin, and

dexamethasone). HIV-positive patients were excluded from this study.

### Study objective

The absolute lymphocyte count (ALC) and monocyte count (AMC) at the time of first relapse which were obtained from routine automated complete blood count (CBC); The absolute monocyte count/absolute lymphocyte count ratio (ALC/AMC ratio) was calculated by dividing the ALC by the AMC. Response criteria were based on the criteria from the International Harmonization Project [18], and evaluated after the third salvage chemotherapy course. Complete remission (CR) was defined by the disappearance of all documented disease; unconfirmed CR (CRu) was used when a residual mass was present without evidence of active disease. Partial response (PR) was defined as a 50% reduction of measurable disease. The primary endpoints were OS and PFS, defined as the time from the time of first relapse until last follow-up or death, and as the time from the time of first relapse to disease progression, relapse, or death of any cause or the last date of follow-up, respectively. Patient and disease characteristics included in the second-line IPI (sIPI) at the time of relapse or primary refractory disease [age < 60 vs.  $\geq$  60 years, Ann Arbor stage (III/IV vs. I/II), Karnofsky performance status (KPS) (<80% vs.  $\geq$  80%), lactate dehydrogenase (LDH) (normal vs. > normal) and number of extra nodal sites (ENS) involved ( $\leq$  vs. > 1)] were utilized.

### Statistical analysis

The correlation between the ALC, AMC, ALC/AMC ratio and clinical parameters was assessed by the chi-square test or Fisher's exact test. PFS and OS were estimated using the Kaplan-Meier method and two-tailed log-rank test. Receiver operating characteristics analysis was also performed to determine the optimal cut-point for the ALC, AMC and ALC/AMC ratio. The Cox proportional hazards model was used to evaluate the ALC, AMC and ALC/AMC ratio as prognostic factors for PFS and OS and to adjust for other known prognostic variables included in the sIPI. P-values were not adjusted for multiple comparisons, All two-sided P-values < 0.05 were determined to be statistically significant. Statistical analysis was carried out using SPSS 16.0 software.

## Results

### Patient characteristics

We retrospectively analyzed data from a total of 253 DLBCL patients in this study, median follow-up following diagnosis was 36 months for the entire cohort (range: 3 month to 118 months) and the estimated 5 year OS for the entire cohort was 56%. Among 163 patients with evidence of first relapse, 42% had relapsed disease and 58% had primary refractory disease. The distribution

**Table 1 Baseline characteristics based on relapsed/primary refractory DLBCL patients with an ALC/AMC ratio  $\geq$  2.0 versus ALC/AMC ratio  $<$  2.0**

Characteristics	ALC/AMC ratio $\geq$ 2.0	ALC/AMC ratio $<$ 2.0	P
Disease status			
Primary rereactory	37	57	<0.001
Relapse	53	16	
Age (years)			
<60	56	49	0.516
$\geq$ 60	34	24	
Gender			
Male	46	27	0.096
Female	45	45	
Karnofsky			
Performance status			
80% or more	79	52	0.008
Less than 80%	11	21	
Number of extra nodal sites			
$\leq$ 1	74	58	0.654
>1	16	15	
Ann Arbor Stage			
I/II	44	18	0.002
III/IV	16	55	
LDH			
$\leq$ Normal	65	40	0.021
>Normal	25	33	
SaalPI			
0	34	13	0.002
1	34	23	
2	18	25	
3	4	12	
Initial chemotherapy			
CHOP	52	31	0.052
R-CHOP	38	42	
Rituximab-containing salvage therapy			
No	61	59	0.060
Yes	29	14	
ASCT			
No	78	67	0.300
Yes	12	6	
Salvage therapy			
DHAP	6	2	0.304
DICE	14	13	
ICE	23	25	
GDP	16	19	
R-DHAP	2	1	

**Table 1 Baseline characteristics based on relapsed/primary refractory DLBCL patients with an ALC/AMC ratio  $\geq$  2.0 versus ALC/AMC ratio  $<$  2.0 (Continued)**

R-DICE	10	7
R-ICE	12	4
R-GDP	7	2

*Abbreviations:* ALC/AMC ratio absolute lymphocyte count/absolute monocyte count ratio, LDH lactate dehydrogenase, *saalPI* second-line age-adjusted International Prognostic Index, *CHOP* cyclophosphamide, hydroxydaunorubicin, vincristine, prednisone, *R-CHOP* rituximab- cyclophosphamide, hydroxydaunorubicin, vincristine, prednisone, *ASCT* autologous stem cell transplantation, *DHAP* dexamethasone, cytarabine, and cisplatin, *DICE* dexamethasone, ifosfamide, cisplatin, and etoposide, *ICE* ifosfamide, carboplatin, and etoposide, *GDP* gemcitabine, cisplatin, and dexamethasone, *R-DHAP* rituximab, dexamethasone, cytarabine, and cisplatin, *R-DICE* rituximab, dexamethasone, ifosfamide, cisplatin, and etoposide, *R-ICE* rituximab, ifosfamide, carboplatin, and etoposide, *R-GDP* rituximab, gemcitabine, cisplatin, and dexamethasone.

of baseline characteristics for 163 relapsed/primary refractory patients based on an ALC/AMC ratio  $\geq$  2.0 versus ALC/AMC ratio  $<$  2.0 at the time of first relapse is presented in Table 1. Eleven, Forty-four, sixty-four and forty-four patients treated with DHAP/R-DHAP, DICE/R-DICE, ICE/R-ICE, and GDP/R-GDP regimens, respectively, there was no significant difference in characteristic based on ALC/AMC ratio at the time of first relapse among the different second-line salvage chemotherapy (Table 1).

The ALC and AMC at the time of first relapse were derived from CBC counts. The cutoff points of ALC, AMC and ALC/AMC ratio for survival outcomes were selected by the receiver operating characteristic (ROC) curve analysis. The most discriminative cutoff value of ALC, AMC and ALC/AMC ratio was 1120/ul (area under the curve [AUC]: 0.648, 95% confidence interval: 0.563-0.733,  $P = 0.001$ ), 530/ul (AUC: 0.734, 95% confidence interval: 0.658-0.811,  $P < 0.001$ ) and 2.0 (AUC: 0.808, 95% confidence interval: 0.741-0.875,  $P < 0.001$ ), respectively. In addition, The ALC and AMC at diagnosis were derived from pre-treatment CBC counts, and the cutoff points of ALC (1430/ul), AMC (460/ul) and ALC/AMC ratio (3.8) for survival outcomes were also selected by ROC curve analysis [11].

**Lower ALC/AMC ratio at the time of first relapse is a adverse prognostic factor for overall survival and progression free survival of relapsed/primary refractory DLBCL patients after second-line therapy**

When the components of the sIPI (age  $\geq$  60 years; KPS  $<$  80%; LDH  $>$  normal; Extranodal sites  $>$  1; Ann Arbor stage III/IV) were assessed in univariate analysis by log rank, age was not predictive of PFS and OS (PFS:  $P = 0.531$ ; OS:  $P = 0.693$ ), whereas Extranodal sites (PFS:  $P = 0.054$ ; OS:  $P = 0.029$ ), KPS ( $P < 0.001$  for both), LDH ( $P < 0.001$  for both), and Ann Arbor stage ( $P < 0.001$  for both) predicted PFS or OS. When entered into a Cox regression

model for multivariate analysis, three factors, KPS, LDH, and Ann Arbor stage remain predictive (Additional file 1: Table S3 and Additional file 2: Table S4). These significant components were identical to those in the saalPI, which was subsequently used to stratify patients into risk groups.

To determine the prognostic significance of the ALC, AMC and ALC/AMC ratio at the time of first relapse for OS and PFS of relapsed/primary refractory DLBCL patients, on univariate analysis, a relative reduction of ALC (<1120/ul), elevated AMC ( $\geq 530$ /ul) and lower ALC/AMC ratio (<2.0) associated with inferior OS (hazard ratio: 3.060, 95% confidence Interval: 1.878-4.988,  $P < 0.001$ ; hazard ratio: 3.346, 95% confidence Interval: 2.178-5.141,  $P < 0.001$ ; hazard ratio: 9.482, 95% confidence Interval: 5.497-16.355,  $P < 0.001$ ; respectively). For comparison, ALC, AMC, ALC/AMC ratio at diagnosis, each of the three factors that comprise the saalPI, early relapse (time from diagnosis to relapse of less than 12 months), prior rituximab treatment and ASCT or not was included in the analysis. Of these, ALC (<1430/ul), AMC ( $\geq 460$ /ul), ALC/AMC ratio (<3.8) and LDH (>normal) at diagnosis, LDH (>normal) at the time of first relapse, KPS (<80%), Ann Arbor stage (stage III/IV), time to relapse after diagnosis, months < 12 and ASCT or not were also of prognostic significance on univariate analysis (Table 2).

Then we included components of the saalPI in a multivariate analysis with the ALC, AMC, ALC/AMC ratio at diagnosis and at the time of first relapse, time to relapse after diagnosis, months < 12 and ASCT or not. As summarized in Table 2, the ALC/AMC ratio at the time of first relapse, early relapse (time to relapse after

diagnosis, months < 12) and ASCT or not were independently significant prognostic factors for OS, with hazard ratios of 8.758 (95% confidence Interval: 3.917-19.581,  $P < 0.001$ ), 3.527 (95% confidence Interval: 1.597-7.787,  $P = 0.002$ ) and 3.877 (95% confidence Interval: 1.310-11.476,  $P = 0.014$ ), respectively (Table 2). Similarly, the ALC/AMC ratio at the time of first relapse, early relapse (time to relapse after diagnosis, months < 12) and ASCT or not were independently significant predictors of PFS when adjusted for components of the saalPI on multivariate analysis (Additional file 3: Table S5).

#### Response and survival rate according to prognostic factors

After platinum-based second-line salvage chemotherapy, the overall response rate, including CR, CRu and PR, was 49%. The factors significantly affecting the overall response rate included early relapse (time to relapse after diagnosis, months < 12), saalPI of 2 to 3, prior rituximab treatment, ALC/AMC ratio and LDH at the time of first relapse ( $P < 0.001$ ) (Table 3). After a median follow-up time of 13 months, the 1-year PFS rate was 37% and was significantly different between the ALC/AMC ratio < 2.0 and ALC/AMC ratio  $\geq 2.0$  (12% and 58%, respectively;  $P < 0.001$ ). 2-year OS was 26%, with significant difference between the ALC/AMC ratio < 2.0 and ALC/AMC ratio  $\geq 2.0$  (4% and 43%, respectively;  $P < 0.001$ ). 1-year PFS and 2-year OS were also affected by early relapse (time to relapse after diagnosis, months < 12), saalPI, rituximab-containing salvage therapy, the ALC, AMC and LDH at the time of first relapse (Table 3).

**Table 2 Univariate and multivariate analyses for overall survival**

Prognostic factors	Univariate analysis		Multivariate analysis	
	HR (95% CI)	P	HR (95% CI)	P
AMC $\geq 530$ /ul	3.346 (2.178-5.141)	<0.001	1.013 (0.537-1.913)	0.976
ALC < 1120/ul	3.060 (1.878-4.988)	<0.001	1.248 (0.704-2.211)	0.448
ALC/AMC ratio < 2.0	9.482 (5.497-16.355)	<0.001	8.758 (3.917-19.581)	<0.001
LDH > normal	2.440 (1.603-3.714)	<0.001	1.092 (0.643-1.855)	0.744
KPS < 80%	2.941 (1.852-4.670)	<0.001	1.004 (0.592-1.702)	0.989
Ann Arbor stage III/IV	3.088 (1.908-4.997)	<0.001	1.061 (0.581-1.937)	0.848
ALC/AMC ratio < 3.8	5.626 (3.119-10.174)	<0.001	1.184 (0.471-2.980)	0.719
AMC $\geq 460$ /ul	2.864 (1.831-4.482)	<0.001	1.243 (0.696-2.220)	0.462
ALC < 1430/ul	3.017 (1.855-4.907)	<0.001	1.387 (0.765-2.513)	0.281
LDH (at diagnosis > normal)	3.061 (1.963-4.775)	<0.001	1.400 (0.818-2.398)	0.220
Time to relapse after diagnosis, months < 12	7.003 (4.162-11.783)	<0.001	3.527 (1.597-7.787)	0.002
Prior rituximab treatment	0.616 (0.592-1.364)	0.899	-	-
Not ASCT	4.984 (1.819-13.655)	0.002	3.877 (1.310-11.476)	0.014

**Abbreviations:** HR hazard ratio, CI confidence interval, AMC absolute monocyte count, ALC absolute lymphocyte count, ALC/AMC ratio absolute lymphocyte count/absolute monocyte count ratio, LDH lactate dehydrogenase, KPS Karnofsky Performance status, ASCT autologous stem cell transplantation.

**Table 3 Response rate and survival according to prognostic factors**

Characteristic	Response CR/CRu/PR			1-year progression free survival			2-year overall survival		
	N	%	P	N	%	P	N	%	P
Time to relapse after diagnosis, months									
<12	33	35	<0.001	15	16	<0.001	7	7	<0.001
≥12	47	68		46	67		35	51	
Prior rituximab treatment									
No	63	67	<0.001	38	40	0.355	20	21	0.126
Yes	17	25		23	33		22	32	
SaalPI at relapse									
2-3	16	27	<0.001	10	17	<0.001	5	9	<0.001
0-1	64	67		51	49		37	36	
ALC/AMC ratio									
<2.0	20	27	<0.001	9	12	<0.001	3	4	<0.001
≥2.0	60	67		52	58		39	43	
Absolute monocyte count									
≥530/ul	21	33	<0.001	13	20	<0.001	6	9	<0.001
<530/ul	59	60		48	49		36	36	
Absolute lymphocyte count									
<1120/ul	41	41	0.015	27	27	0.001	15	15	<0.001
≥1120/ul	39	61		34	53		27	42	
LDH at relapse									
>Normal	16	28	<0.001	12	21	0.001	9	16	0.026
≤Normal	64	61		49	47		33	31	
Rituximab containing salvage therapy									
No	55	46	0.166	39	33	0.036	22	18	<0.001
Yes	25	58		22	51		20	47	

**Abbreviations:** CR complete remission, CRu unconfirmed complete remission, PR partial response, saalPI second-line age-adjusted International Prognostic Index, ALC/AMC ratio absolute lymphocyte count/absolute monocyte count ratio, LDH lactate dehydrogenase.

### The ALC/AMC ratio at the time of first relapse and second-line therapy

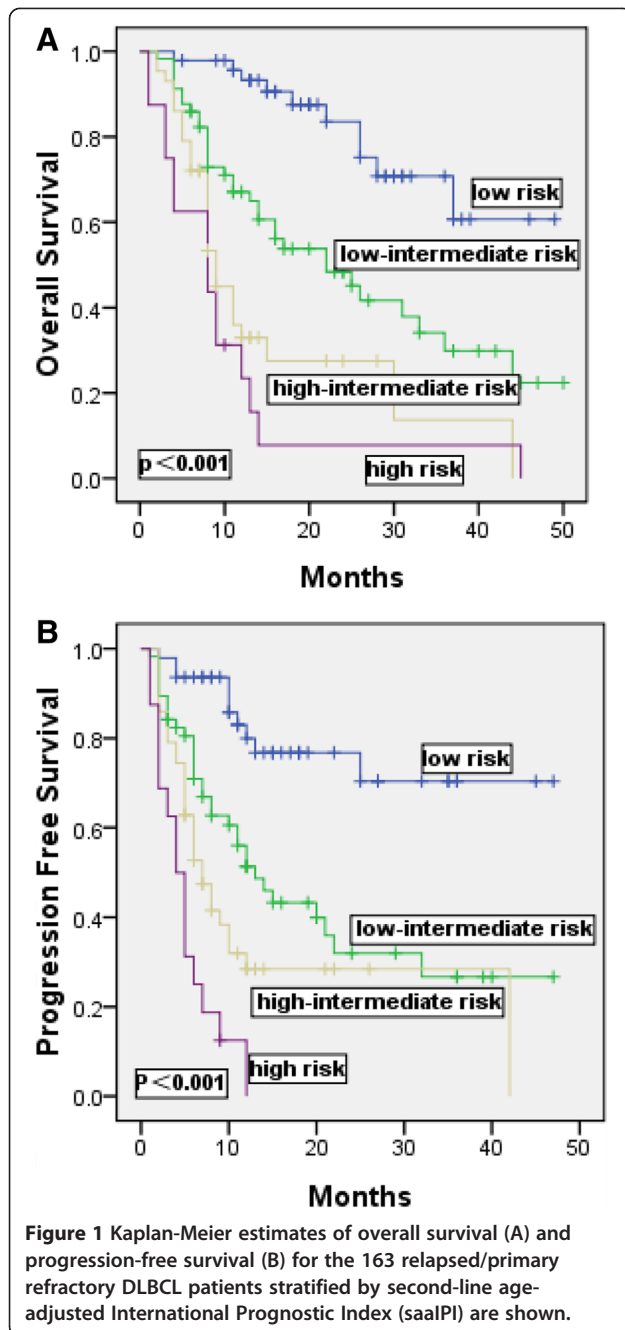
The ALC/AMC ratio at the time of first relapse was analyzed to determine whether it could further discriminate for survival when considering second-line therapy with either ASCT or further chemotherapy. In the 18 first relapsed DLBCL treated with ASCT, the median OS and PFS were significantly longer for patients with an ALC/AMC ratio ≥ 2.0 when compared with those patients with an ALC/AMC ratio < 2.0 (median OS: 34 months, 2 years OS rates of 92% versus median OS: 19 months, 2 years OS rates of 17%,  $P = 0.001$ ; and median PFS: 27 months, 1 years PFS rates of 92% versus median PFS: 15 months, 1 years PFS rates of 83%,  $P = 0.596$ , respectively). In the 145 first relapsed DLBCL patients that were treated with further chemotherapy, the median OS and PFS were also significantly longer for patients with an ALC/AMC ratio ≥ 2.0 when compared with those patients with an ALC/AMC ratio < 2.0 (median OS: 18 months, 2 years OS rates of

36% versus median OS: 8 months, 2 years OS rates of 3%,  $P < 0.001$ ; and median PFS: 12 months, 1 years PFS rates of 53% versus median PFS: 5 months, 1 years PFS rates of 6%,  $P < 0.001$ , respectively).

### The ALC/AMC ratio at the time of first relapse identifies high-risk patients and provides additional prognostic information when superimposed on the saalPI

PFS and OS were analyzed using the saalPI in Figure 1A and B. The ALC/AMC ratio at the time of first relapse remains an independently significant prognostic factor when adjusting for the saalPI. Therefore, we sought to determine whether it may provide additional prognostic information when combined with the saalPI. The 47 low-risk, 100 intermediate-risk (high-intermediate and low-intermediate were combined) and 16 high-risk patients identified by the saalPI were subsequently risk stratified using the ALC/AMC ratio. We showed that patients with a low-risk category of saalPI score (saalPI = 0) and low-intermediate/





high-intermediate (saalPI = 1–2), the ALC/AMC ratio was a useful way to distinguish those with favorable outcomes from those with adverse outcomes (OS:  $P = 0.003$ , PFS:  $P = 0.013$ , Figure 2A and B; OS:  $P < 0.001$ , PFS:  $P < 0.001$ , Figure 2C and D; respectively), in conclusion, the ALC/AMC ratio was able to further risk-stratify these patients. But in patients with high-risk (saalPI = 3), the number of the patients were only sixteen, so as likely not to make a similar analysis in this subgroup meaningful (OS:  $P = 0.102$ , PFS:  $P = 0.094$ , Figure 2E and F). In addition, we

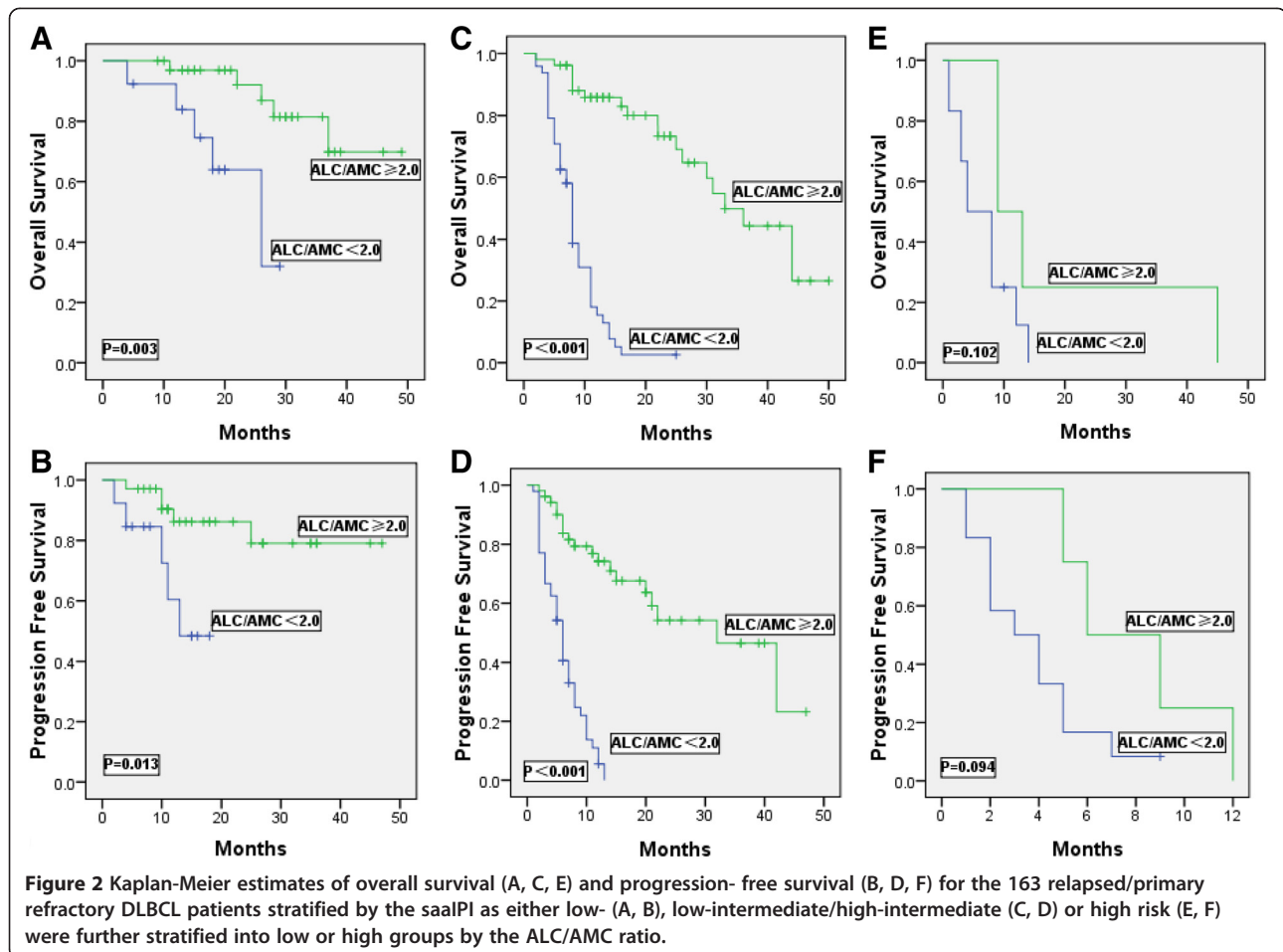
analysed 94 primary refractory and 69 relapsed DLBCL patients to seek to determine whether it may provide additional prognostic information when combined with the saalPI, respectively. We showed that in primary refractory and relapsed patients with a low-intermediate/high-intermediate (saalPI = 1–2), respectively, the ALC/AMC ratio was a useful way to distinguish those with favorable outcomes from those with adverse outcomes (OS:  $P < 0.001$ , PFS:  $P < 0.001$ , Additional file 4: Figure S1C and D; OS:  $P < 0.001$ , PFS:  $P < 0.001$ , Additional file 5: Figure S2C and D; respectively).

Among the all patients, 8% of patients identified by the saalPI as ‘low -risk’, upon further risk stratification by the ALC/AMC ratio ( $< 2.0$ ) at the time of first relapse, found to have dismal outcomes, with a median OS of 18 months, a median PFS of 10 months; Moreover, 29% of identified as ‘intermediate -risk’ patients were with a median OS of 8 months, a median PFS of 6 months. Similar results were obtained when intermediate risk patients treated with rituximab-containing salvage therapy were risk-stratified by the ALC/AMC ratio in Figure 3. In this case, 26% of identified as ‘intermediate risk’ patients were with a median OS of 15 months, a median PFS of 12 months.

## Discussion

The International Prognostic Index (IPI), solely considering patient and tumor characteristics, is currently the standard prognostic tool used to predict clinical outcomes for patients with DLBCL. But recent work, based on gene expression profiling studies in NHL, shows that gene expression by tumor-infiltrating lymphocytes and myeloid-derived cells predict a clinical outcome [19], which implies that a prognostic system that considers features of the tumor-bearing host and the tumor microenvironment may provide prognostic information. The ALC/AMC ratio at diagnosis, as a simple biomarker combining an estimate of host immune homeostasis and tumor microenvironment, was recently shown to be an independent prognostic indicator in HL [16,17] and DLBCL [10], and combining the dichotomized ALC and AMC to generate the ALC/AMC prognostic score was also provided prognostic information independently of that included in the IPI [8,9]. Therefore, we first sought to examine the both in our 253 DLBCL patients from the two hospital institution. In our study [11], the results were consistent with the previous findings from Wilcox RA et al., Batty N et al. and Rambaldi A et al. [8-10].

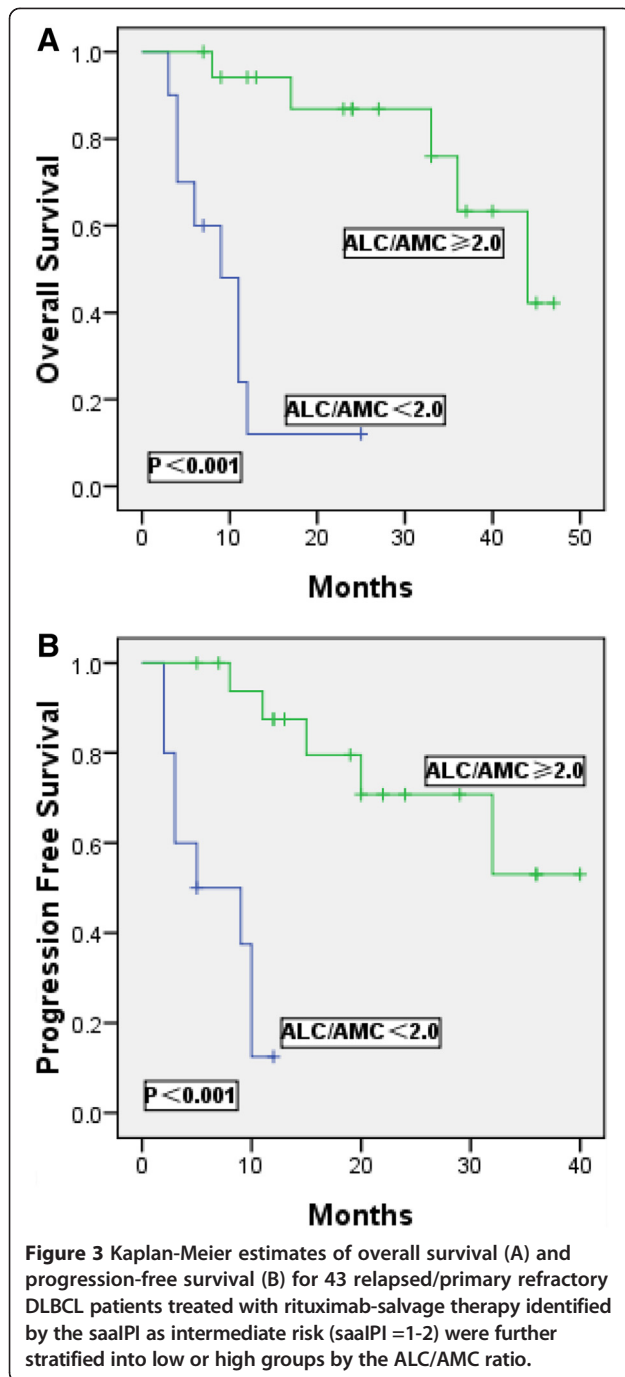
The international Prognostic Index at relapse (saalPI), early relapse less than 12 months after diagnosis and prior exposure to rituximab have been demonstrated to be predictors of clinical outcomes in first relapsed DLBCL patients [4,20]. Biologically, a few parameters at



relapse have been reported to be predictive of survival independent of IPI score, including ALC at the time of first relapse [21]. No reports have addressed whether ALC/AMC ratio at the time of first relapse predicts survival in NHL. Thus, we assessed the prognostic significance of ALC/AMC ratio at the time of first relapse in relapsed/primary refractory DLBCL. The present study showed that ALC/AMC ratio at the time of first relapse was an adverse independent prognostic factor for OS and PFS and can identify the high-risk patients otherwise classified as low/intermediate risk by the saaPI alone. We also found that ALC/AMC ratio at the time of first relapse and several independent factors significantly affected response rates after salvage therapy, including saaPI score, early relapse less than 12 months after diagnosis, and prior rituximab treatment, which is in agreement with those provided by Gisselbrecht C et al. [4]. ALC/AMC ratio at the time of first relapse, early relapse less than 12 months after diagnosis and saaPI score, the same independent factors were found for 1-year PFS and 2-year OS rate. But there were no difference between the prior rituximab treatment or not; the fact that most patients in our study who progressed

after R-CHOP have late relapse may explain this discrepancy. In accordance with previous reports [22,23], in our study, those who received rituximab-containing salvage therapy at relapse achieved significantly longer survival (both PFS and OS) and had a significant improvement in the 1-year PFS and 2-year OS rates than those who underwent salvage therapy with chemotherapy alone regardless of the first-line treatment with CHOP or R-CHOP, and ASCT or not. In addition, among patients who received first-line treatment with CHOP, those who received rituximab-containing salvage therapy at relapse achieved significantly improvement in 2-year OS rate than those who underwent salvage therapy with chemotherapy alone.

Lymphopenia is considered a surrogate marker of host immunological incompetence, in addition, lymphocytes (including natural killer [NK] cells) are important mediators of antibody-dependent cell-mediated cytotoxicity, and may be required for rituximab-mediated, antibody-dependent cell-mediated cytotoxicity-dependent destruction of malignant B cells [24]. Not surprisingly then, lymphopenia is an adverse prognostic factor in indolent and aggressive NHL, including DLBCL. Recently, Dehghani M



et al. [25] and Gergely L et al. [26] reported that lower CD4+ lymphocyte, CD3+ and CD8+ lymphocytes were corresponding with significantly inferior overall survival in B-cell NHL, respectively. Głowała-Kosińska M et al. [27] showed that lower number of circulating regulatory T cells (Tregs) was associated with reduced chance of achieving CR and reduced probability of even-free survival (EFS) in newly diagnosed DLBCL, and Shafer D et al. [28] showed that low NK cell counts in peripheral

blood were associated with inferior overall survival in patients with FL. However, in the tumor microenvironment, elevated infiltration of FOXP3+ Tregs was correlated with a favorable clinical outcome in different types of lymphoma reported, including DLBCL [29-33], and Hasselblom S et al. reported that DLBCL patients with a small number of cytotoxic T-cell intracytoplasmic antigen-1 (TIA-1) + T cellshad significantly better outcome [34].

Myeloid-lineage cells, including monocytes and their progeny, promote tumorigenesis and angiogenesis [35], and contribute to the suppression of host antitumor immunity so that not surprisingly then, development of peripheral blood neutrophilia or monocytosis are adverse prognostic factors in multiple solid tumors [36-38]. A new nomenclature defines human monocyte subsets into three, classical (CD14++CD16-), intermediate (CD14++CD16+) and nonclassical (CD14 + CD16++) [39]. CD16+ monocytes recently have shown diagnostic and prognostic potential in malignant disease [40-42], but to date, as far as we know, are not investigated in lymphoma. Monocytes that circulate in the bloodstream are recruited to inflamed tissues and give rise to macrophages. Macrophages, which termed tumour-associated macrophages (TAMs), play an important role in tumor tissues. TAMs can be classified into two functionally distinct types, M1 and M2, which reported to determine the effects against tumors, i.e. promotional (M2) or suppressive (M1) [43]. Hasselblom S et al. [44] reported that the number of TAMs in DLBCL tissues was not correlated with the prognosis, but the recent study of the Osaka Lymphoma Study Group [45] showed that a high number of M2 TAMs, but not of total TAMs, was an independent factor for a significantly poor prognosis in DLBCL patients.

The pattern of human monocytes recruitment in vivo to tumors is not very clear, although Qian et al. [46] recently showed that human CD14 + CD16- inflammatory monocytes recruited by a CCL2 mechanism and differentiate into macrophages that promote the subsequent growth of metastatic cells in vivo. In addition, Nakasone ES et al. [47] reported that infiltration of CCR2- expressing myeloid cells into chemotherapy-treated tumors contributes to tumor regrowth and relapse after treatment; recently, Sanford DE et al. [48] found that inflammatory monocyte (CD14+/CCR2+) recruitment is critical to pancreatic cancer progression, and targeting CCR2 may be an effective immunotherapeutic strategy in this disease. As previously mentioned, We hypothesized that several important questions could remain: How do the subsets of blood monocyte exist in DLBCL patients at the time of first relapse? Do the monocyte subsets vary when compared with the time of diagnosis? Which blood monocyte subsets preferentially recruit to metastatic sites, and involve in tumor microenvironment? Are there novel specific therapeutic strategies to inhibit the



monocyte recruitment, which may promote the metastasis and resistance to chemotherapy, so that can increase the response rate of second-line salvage regimens, prolong the overall survival? Thus, more further studies are deserved. In a word, the novel therapy of relapsed DLBCL resulting from better understanding of patient, tumor characteristics, host immunity and tumor microenvironment may be needed.

Our study has some limitations. First, although there was no significant difference in characteristic based on ALC/AMC ratio at the time of first relapse and response rate among different second-line salvage chemotherapy in our study, and no clear superiority of one salvage regimen over another has been demonstrated all over the world, this may lower the quality of the data. Thus, further studies exploring the prognostic significance of ALC/AMC ratio at the time of first relapse in relapsed/primary refractory DLBCL patients with uniform salvage regimens are warranted. Second, on the one hand, as a retrospective study, patients were not randomly assigned to ASCT versus other salvage therapies, which meant that the choice of ASCT or not might have been biased by the treating physician's preference based on patient's characteristics. Thus, even though ASCT was found to be a prognostic factor for survival in our study, it is important to reemphasize the potential bias in patient selectivity undergoing ASCT; on the other hand, the number of patients who received ASCT was small in our study, so this should require validation in a larger cohort in the future. However, our study reported a significantly superior OS and PFS in patients who underwent ASCT compared with who received further chemotherapy, which was in agreement with the result of the 1995 PARMA trial [49]. The patients with higher ALC/AMC ratio experienced better OS and PFS regardless of their treatment (ASCT or not), and the ALC/AMC ratio at the time of first relapse was able to discriminate for survival in both groups (ASCT and further chemotherapy).

## Conclusions

In conclusion, our study identifies prognostic utility for ALC/AMC ratio at the time of first relapse as a simple tool in relapsed/primary refractory DLBCL patients. Given the limited number of patients included in this retrospective study, the prognostic value will require validation in an independent cohort of patients in prospective trials, especially in chemosensitive relapsed DLBCL followed by high-dose therapy and stem cell transplantation. To our knowledge, this study is the first to identify ALC/AMC ratio the prognostic significance independent of the saalPI to predict response rate and survival outcome in relapsed/refractory DLBCL patients and add to its ability to identify high-risk patients. As new immuno-based therapies are developed to treat relapsed NHL, the role of the

host immune homeostasis and tumor microenvironment, such as targeting monocyte mobilization, is becoming more important in these treatment modalities.

## Additional files

**Additional file 1:** sIPI as predictors of overall survival.

**Additional file 2:** sIPI as predictors of progression free survival.

**Additional file 3:** Univariate and multivariate analyses for progression free survival.

**Additional file 4:** Kaplan-Meier estimates of overall survival (A, C, E) and progression-free survival (B, D, F) for 94 primary refractory DLBCL patients identified by the saalPI as either low- (A, B), low-intermediate/high- intermediate (C, D) and high risk (E, F) were further stratified into low or high groups by the ALC/AMC ratio.

**Additional file 5:** Kaplan-Meier estimates of overall survival (A, C) and progression-free survival (B, D) for 69 relapsed DLBCL patients identified by the saalPI as either low- (A, B), low-intermediate/high-intermediate (C, D) were further stratified into low or high groups by the ALC/AMC ratio.

## Competing interests

The authors declared that they have no competing interests.

## Authors' contributions

YLL designed the study, performed the statistical analysis, and drafted the manuscript. KSG, YYP and YJ participated in the collection of the clinical data. ZMZ conceived of the study, and participated in its design and coordination and helped to draft the manuscript. All authors read and approved the final manuscript.

## Acknowledgements

This work is supported by grants from the key technology projects of Anhui Province of China (11010402168) and the National Natural Science Foundation of China (81141104). The authors thank the patients and their families and all the investigators, including the physicians, nurses, and laboratory technicians in this study.

## Author details

<sup>1</sup>Department of Hematology, The Second Affiliated Hospital of Anhui Medical University, Hefei, Anhui 230601, People's Republic of China.

<sup>2</sup>Department of Oncology, The First Affiliated Hospital of Anhui Medical University, Hefei, Anhui 230022, People's Republic of China.

Received: 7 October 2013 Accepted: 8 May 2014

Published: 19 May 2014

## References

1. Habermann TM: New developments in the management of diffuse large B-cell lymphoma. *Hematology* 2012, **17**:S93-S97.
2. Friedberg JW: Relapsed/Refractory Diffuse Large B-Cell Lymphoma. *Hematology Am Soc Hematol Educ Program* 2011, **2011**:498-505.
3. Applebaum FR: Hematologic cell transplantation for non-Hodgkin lymphoma: yesterday, today, and tomorrow. *J Clin Oncol* 2008, **26**:2927-2929.
4. Gisselbrecht C, Glass B, Mounier N, Singh Gill D, Linch DC, Trneny M, Bosly A, Ketterer N, Shpilberg O, Hagberg H, Ma D, Briere J, Moskowitz CH, Schmitz N: Salvage regimens with autologous transplantation for relapsed large B-cell lymphoma in the rituximab era. *J Clin Oncol* 2010, **28**:4184-4190.
5. Kim DH, Baek JH, Chae YS, Kim YK, Kim HJ, Park YH, Song HS, Chung JS, Hyun MS, Sohn SK: Absolute lymphocyte counts predicts response to chemotherapy and survival in diffuse large B-cell lymphoma. *Leukemia* 2007, **21**:2227-2230.
6. Cox MC, Nofroni I, Laverde G, Ferrari A, Amodeo R, Tatarelli C, Saltarelli F, Veggia B, Aloe-Spiriti MA, Ruco L, Monarca B: Absolute lymphocyte count

- is a prognostic factor in diffuse large B-cell lymphoma. *Br J Haematol* 2008, **141**:265–268.
7. Oki Y, Yamamoto K, Kato H, Kuwatsuka Y, Taji H, Kagami Y, Morishima Y: **Low absolute lymphocyte count is a poor prognostic marker in patients with diffuse large B-cell lymphoma and suggests patients' survival benefit from rituximab.** *Eur J Haematol* 2008, **81**:448–453.
  8. Wilcox RA, Ristow K, Habermann TM, Inwards DJ, Micallef IN, Johnston PB, Colgan JP, Nowakowski GS, Ansell SM, Witzig TE, Markovic SN, Porrata L: **The absolute monocyte and lymphocyte prognostic score predicts survival and identifies high-risk patients in diffuse large-B-cell lymphoma.** *Leukemia* 2011, **25**:1502–1509.
  9. Batty N, Ghonimi E, Feng L, Fayad L, Younes A, Rodriguez MA, JE R- u, McLaughlin P, Samaniego F, Kwak LGW, Hagemester FB Jr: **The absolute monocyte and lymphocytic prognostic index for patients with diffuse large B-cell lymphoma who receive R-CHOP.** *Clin Lymphoma Myeloma Leuk* 2013, **13**:15–18.
  10. Rambaldi A, Boschini C, Gritti G, Delaini F, Oldani E, Rossi A, Barbui AM, Caracciolo D, Ladetto M, Gueli A, De Crescenzo A, Passera R, Devizzi L, Patti C, Gianni AM, Tarella C: **The lymphocyte to monocyte ratio improves the IPI-risk definition of diffuse large B-cell lymphoma when rituximab is added to chemotherapy.** *Am J Hematol* 2013, **88**:1062–1067.
  11. Li YL, Pan YY, Jiao Y, Ning J, Fan YG, Zhai ZM: **Peripheral blood lymphocyte/monocyte ratio predicts outcome for patients with diffuse large B cell lymphoma after standard first-line regimens.** *Ann Hematol* 2014, **93**:617–626.
  12. Wilcox RA, Ristow K, Habermann TM, Inwards DJ, Micallef IN, Johnston PB, Colgan JP, Nowakowski GS, Ansell SM, Witzig TE, Markovic SN, Porrata L: **The absolute monocyte count is associated with overall survival in patients newly diagnosed with follicular lymphoma.** *Leuk Lymphoma* 2012, **53**:575–580.
  13. Watanabe R, Tomita N, Kishimoto K, Koyama S, Ogusa E, Ishii Y, Miyashita K, Matsuura S, Fujisawa S, Hattori Y, Takasaki H, Fujita A, Ohshima R, Kuwabara H, Hashimoto C, Fujimaki K, Sakai R, Ishigatsubo Y: **Absolute monocyte count in follicular lymphoma patients treated with rituximab plus cyclophosphamide, doxorubicin, vincristine, and prednisone.** *Leuk Res* 2013, **37**:1208–1212.
  14. Bari A1, Tadmor T, Sacchi S, Marcheselli L, Liardo EV, Pozzi S, Luminari S, Baldini L, Marmiroli S, Federico M, Polliack A: **Monocytosis has adverse prognostic significance and impacts survival in patients with T-cell lymphomas.** *Leuk Res* 2013, **37**:619–623.
  15. Huang JJ, Li YJ, Xia Y, Wang Y, Wei WX, Zhu YJ, Lin TY, Huang HQ, Jiang WQ, Li ZM: **Prognostic significance of peripheral monocyte count in patients with extranodal natural killer/T-cell lymphoma.** *BMC Cancer* 2013, **13**:222.
  16. Koh YW, Kang HJ, Park C, Yoon DH, Kim S, Suh C, Go H, Kim JE, Kim CW, Huh J: **The ratio of the absolute lymphocyte count to the absolute monocyte count is associated with prognosis in Hodgkin's lymphoma: correlation with tumor-associated macrophages.** *Oncologist* 2012, **17**:871–880.
  17. Porrata LF, Ristow K, Colgan JP, Habermann TM, Witzig TE, Inwards DJ, Ansell SM, Micallef IN, Johnston PB, Nowakowski GS, Thompson C, Markovic SN: **Peripheral blood lymphocyte/monocyte ratio at diagnosis and survival in classical Hodgkin's lymphoma.** *Haematologica* 2012, **97**:262–269.
  18. Cheson BD, Horning SJ, Coiffier B, Shipp MA, Fisher RI, Connors JM, Lister TA, Vose J, Grillo-López A, Hagenbeek A, Cabanillas F, Klippenstein D, Hiddemann W, Castellino R, Harris NL, Armitage JO, Carter W, Hoppe R, Canellos GP: **Report of an international workshop to standardize response criteria for non-Hodgkin's lymphomas: NCI Sponsored International Working Group.** *J Clin Oncol* 1999, **17**:1244.
  19. Lenz G, Wright G, Dave SS, Xiao W, Powell J, Zhao H, Xu W, Tan B, Goldschmidt N, Iqbal J, Vose J, Bast M, Fu K, Weisenburger DD, Greiner TC, Armitage JO, Kyle A, May L, Gascoyne RD, Connors JM, Troen G, Holte H, Kvaloy S, Dierickx D, Verhoef G, Delabie J, Smeland EB, Jares P, Martinez A, Lopez-Guillermo A, et al: **Stromal gene signatures in large-B- cell lymphomas.** *N Engl J Med* 2008, **359**:2313–2323.
  20. Martín A, Conde E, Aman M, Canales MA, Deben G, Sancho JM, Andreu R, Salar A, García-Sánchez P, Vázquez L, Nistal S, Requena MJ, Donato EM, González JA, León A, Ruiz C, Grande C, González-Barca E, Caballero MD: **R-ESHAP as salvage therapy for patients with relapsed or refractory diffuse large B-cell lymphoma: the influence of prior exposure to rituximab on outcome. A GEL/TAMO study.** *Haematologica* 2008, **93**:1829–1836.
  21. Porrata LF, Ristow K, Habermann TM, Witzig TE, Inwards DJ, Markovic SN: **Absolute lymphocyte count at the time of first relapse predicts survival in patients with diffuse large B-cell lymphoma.** *Am J Hematol* 2009, **84**:93–97.
  22. Vellenga E, Putten WL V 't, van Veer MB, Zijlstra JM, Fibbe WE, van Oers MH, Verdonck LF, Wijermans PW, van Imhoff GW, Lugtenburg PJ, Huijgens PC: **Rituximab improves the treatment results of DHAP-VIM-DHAP and ASCT in relapsed/progressive aggressive CD20 + NHL: a prospective randomized HOVON trial.** *Blood* 2008, **111**:537–543.
  23. Feugier P, Van Hoof A, Sebban C, Solal-Celigny P, Bouabdallah R, Fermé C, Christian B, Lepage E, Tilly H, Morschhauser F, Gaulard P, Salles G, Bosly A, Gisselbrecht C, Reyes F, Coiffier B: **Long-term results of the R-CHOP study in the treatment of elderly patients with diffuse large B-cell lymphoma: a study by the Grouped'Etude des Lymphomes de l'Adulte.** *J Clin Oncol* 2005, **23**:4117–4126.
  24. Weiner GJ: **Rituximab: mechanism of action.** *Semin Hematol* 2010, **47**:115–123.
  25. Dehghani M, Sharifpour S, Amirghofran Z, Zare HR: **Prognostic significance of T cell subsets in peripheral blood of B cell non-Hodgkin's lymphoma patients.** *Med Oncol* 2012, **29**:2364–2371.
  26. Gergely L, Váncsa A, Miltényi Z, Simon Z, Baráth S, Illés Á: **Pretreatment T lymphocyte numbers are contributing to the prognostic significance of absolute lymphocyte numbers in B-cell non-Hodgkins lymphomas.** *Pathol Oncol Res* 2011, **17**:249–255.
  27. Glowala-Kosińska M, Chwieduk A, Nieckula J, Sadaś-Wojciechowska M, Grosicki S, Rusin A, Nowara E, Giebel S: **Association of circulating regulatory T cell number with the incidence and prognosis of diffuse large B cell lymphoma.** *Eur J Haematol* 2013, **91**:122–128.
  28. Shafer D, Smith MR, Borghaei H, Millenson MM, Li T, Litwin S, Anad R, Al-Saleem T: **Low NK cell counts in peripheral blood are associated with inferior overall survival in patients with follicular lymphoma.** *Leuk Res* 2013, **37**:1213–1215.
  29. Tzankov A, Meier C, Hirschmann P, Went P, Pileri SA, Dirnhofer S: **Correlation of high numbers of intratumoral FOXP3+ regulatory T cells with improved survival in germinal center-like diffuse large B-cell lymphoma, follicular lymphoma and classical Hodgkin's lymphoma.** *Haematologica* 2008, **93**:193–200.
  30. Kim WY, Jeon YK, Kim TM, Kim JE, Kim YA, Lee SH, Kim DW, Heo DS, Kim CW: **Increased quantity of tumor-infiltrating FOXP3-positive regulatory T cells is an independent predictor for improved clinical outcome in extranodal NK/T-cell lymphoma.** *Ann Oncol* 2009, **20**:1688–1696.
  31. Kim KH, Kim TM, Go H, Kim WY, Jeon YK, Lee SH, Kim DW, Khwang SI, Kim CW, Heo DS: **Clinical significance of tumor-infiltrating FOXP3+ T cells in patients with ocular adnexal mucosa-associated lymphoid tissue lymphoma.** *Cancer Sci* 2011, **102**:1972–1976.
  32. Felcht M, Heck M, Weiss C, Becker JC, Dippel E, Müller CS, Nashan D, Sachse MM, Nicolay JP, Booken N, Goerdts S, Klemke CD: **Expression of the T-cell regulatory marker FOXP3 in primary cutaneous large B-cell lymphoma tumour cells.** *Br J Dermatol* 2012, **167**:348–358.
  33. Greaves P, Clear A, Coutinho R, Wilson A, Matthews J, Owen A, Shanyinde M, Lister TA, Calaminici M: **Gribsen JG: Expression of FOXP3, CD68, and CD20 at diagnosis in the microenvironment of classical Hodgkin lymphoma is predictive of outcome.** *J Clin Oncol* 2013, **31**:256–262.
  34. Hasselblom S, Sigurdadottir M, Hansson U, Nilsson-Ehle H, Ridell B, Andersson PO: **The number of tumour-infiltrating TIA-1+ cytotoxic T cells but not FOXP3+ regulatory T cells predicts outcome in diffuse large B-cell lymphoma.** *Br J Haematol* 2007, **137**:364–373.
  35. Gabrilovich DI, Nagaraj S: **Myeloid-derived suppressor cells as regulators of the immune system.** *Nat Rev Immunol* 2009, **3**:162–174.
  36. Schmidt H, Bastholt J, Geertsens P, Christensen IJ, Larsen S, Gehl J, von der Maase H: **Elevated neutrophil and monocyte counts in peripheral blood are associated with poor survival in patients with metastatic melanoma: a prognostic model.** *Br J Cancer* 2005, **93**:273–278.
  37. Donskov F, von der Maase H: **Impact of immune parameters on long-term survival in metastatic renal cell carcinoma.** *J Clin Oncol* 2006, **24**:1997–2005.
  38. Mandrekar SJ, Schild SE, Hillman SL, Allen KL, Marks RS, Mailliard JA, Krook JE, Maksymiuk AW, Chansky K, Kelly K, Adjei AA, Jett JR: **A prognostic model for advanced stage non-small cell lung cancer: pooled analysis of North Central Cancer Treatment Group trials.** *Cancer* 2006, **107**:781–792.
  39. Ziegler-Heitbrock L, Ancuta P, Crowe S, Dalod M, Grau V, Hart DN, Leenen PJ, Liu YJ, MacPherson G, Randolph GJ, Scherberich J, Schmitz J, Shortman K, Sozzani S, Strobel H, Zembala M, Austyn JM, Lutz MB: **Nomenclature of monocytes and dendritic cells in blood.** *Blood* 2010, **116**:e74–e80.

40. Subimerb C, Pinaor S, Lulitanond V, Khuntikeo N, Okada S, McGrath MS, Wongkham S: **Circulating CD14(+) CD16(+) monocyte levels predict tissue invasive character of cholangiocarcinoma.** *Clin Exp Immunol* 2010, **16**:471–479.
41. Schauer D, Starlinger P, Reiter C, Jahn N, Zajc P, Buchberger E, Bachleitner-Hofmann T, Bergmann M, Stift A, Gruenberger T, Brostjan C: **Intermediate monocytes but not TIE2-expressing monocytes are a sensitive diagnostic indicator for colorectal cancer.** *PLoS One* 2012, **7**:e44450.
42. Feng AL, Zhu JK, Sun JT, Yang MX, Neckenig MR, Wang XW, Shao QQ, Song BF, Yang QF, Kong BH, Qu X: **CD16+ monocytes in breast cancer patients: expanded by monocyte chemoattractant protein-1 and may be useful for early diagnosis.** *Clin Exp Immunol* 2011, **164**:57–65.
43. Randolph GJ: **No need to coax monocytes.** *Science* 2011, **332**:1268–1269.
44. Hasselblom S, Hansson U, Sigurdardottir M, Nilsson-Ehle H, Ridell B, Andersson PO: **Expression of CD68+ tumor-associated macrophages in patients with diffuse large B-cell lymphoma and its relation to prognosis.** *Pathol Int* 2008, **58**:529–532.
45. Wada N, Zaki MA, Hori Y, Hashimoto K, Tsukaguchi M, Tatsumi Y, Ishikawa J, Tominaga N, Sakoda H, Take H, Tsudo M, Kuwayama M, Morii E, Aozasa K: **Tumor-associated macrophages in diffuse large B-cell lymphoma: a study of the Osaka Lymphoma Study Group.** *Histopathology* 2012, **60**:313–319.
46. Qian BZ, Li J, Zhang H, Kitamura T, Zhang J, Campion LR, Kaiser EA, Snyder LA, Pollard JW: **CCL2 recruits inflammatory monocytes to facilitate breast-tumour metastasis.** *Nature* 2011, **475**:222–225.
47. Nakasone ES, Askautrud HA, Kees T, Park JH, Plaks V, Ewald AJ, Fein M, Rasch MG, Tan YX, Qiu J, Park J, Sinha P, Bissell MJ, Frengen E, Werb Z, Egeblad M: **Imaging tumor-stroma interactions during chemotherapy reveals contributions of the microenvironment to resistance.** *Cancer Cell* 2012, **21**:488–503.
48. Sanford DE, Belt BA, Panni RZ, Mayer A, Deshpande AD, Carpenter D, Mitchem JB, Plambeck-Suess SM, Worley LA, Goetz BD, Wang-Gillam A, Eberlein TJ, Denardo DG, Goedegebuure SP, Linehan DC: **Inflammatory monocyte mobilization decreases patient survival in pancreatic cancer: a role for targeting the CCL2/CCR2 axis.** *Clin Cancer Res* 2013, **19**:3404–3415.
49. Olivieri A, Santini G, Patti C, Chisesi T, De Souza C, Rubagotti A, Aversa S, Billio A, Porcellini A, Candela M, Centurioni R, Congiu AM, Brunori M, Nati S, Spriano M, Vimercati R, Marino G, Contu A, Tedeschi L, Majolino I, Crugnola M, Sertoli MR: **Upfront high-dose sequential therapy (HDS) versus VACOP-B with or without HDS in aggressive non-Hodgkin's lymphoma: long-term results by the NHLCSG.** *Ann Oncol* 2005, **16**:1941–1948.

doi:10.1186/1471-2407-14-341

**Cite this article as:** Li et al.: Peripheral blood lymphocyte/monocyte ratio at the time of first relapse predicts outcome for patients with relapsed or primary refractory diffuse large B-cell lymphoma. *BMC Cancer* 2014 **14**:341.

**Submit your next manuscript to BioMed Central and take full advantage of:**

- Convenient online submission
- Thorough peer review
- No space constraints or color figure charges
- Immediate publication on acceptance
- Inclusion in PubMed, CAS, Scopus and Google Scholar
- Research which is freely available for redistribution

Submit your manuscript at  
www.biomedcentral.com/submit

