

Radiation dose to the nodal regions during prone versus supine breast irradiation

Melinda Csenki
Dóra Újhidy
Adrienn Cserhádi
Zsuzsanna Kahán
Zoltán Varga

Department of Oncotherapy,
University of Szeged, Szeged, Hungary

Background: Prone positioning for breast radiotherapy is preferable when the aim is a reduction of the dose to the ipsilateral lung or the heart in certain left-sided cases.

Materials and methods: In 100 breast cancer cases awaiting postoperative whole-breast radiotherapy, conformal radiotherapy plans were prospectively generated in both prone and supine positions. The axillary nodal region (levels I–III) and internal mammary (IM) lymph-node region in the upper three intercostal spaces were retrospectively contoured. The mean doses to the nodal regions and the volume receiving 25 Gy ($V_{25\text{Gy}}$), $V_{45\text{Gy}}$, and $V_{47.5\text{Gy}}$ were compared between the two treatment positions.

Results: In most cases, the doses to axillary levels I–III and the IM lymph nodes were inadequate, regardless of the treatment position. The nodal doses were significantly lower in the prone than in the supine position. The radiation doses to levels II–III and IM nodes were especially low. The $V_{45\text{Gy}}$ and $V_{47.5\text{Gy}}$ of the level I axillary lymph nodes were 54.6% and 40.2%, respectively, in the supine, and 3.0% and 1.7%, respectively, in the prone position. In the supine position, only 17 patients (17%) received a mean dose of 45 Gy to the axillary level I nodes.

Conclusion: The radiation dose to the axillary and IM lymph nodes during breast radiotherapy is therapeutically insufficient in most cases, and is significantly lower in the prone position than in the supine position.

Keywords: axillary lymph nodes, breast radiotherapy, internal mammary nodes, prone positioning, supine positioning

Background

Prone breast radiotherapy is being increasingly utilized in consequence of its favorable effects on the dose to the organs at risk (OARs), such as the ipsilateral lung and the heart in left-sided cases.^{1–5} All patients with right-sided breast cancer benefit from prone positioning because of the dramatic reduction in the ipsilateral lung dose, and at least 60% of patients with left-sided breast cancer benefit from lower dose to the heart and/or left anterior descending coronary artery.^{1–3,5} Prone breast radiotherapy has proved feasible, and may be performed with good repositioning accuracy.^{3,6,7} Breast radiotherapy in either the prone or the supine position ensures good coverage of the operated breast, and similar dose homogeneity.^{3,4,8} Prone breast radiotherapy provides a long-term outcome (local/regional control and toxicity) similar to that of treatment in the supine position.⁹

The radiotherapy of regional lymph nodes contributes to improved relapse-free and overall survival in patients with axillary lymph node-positive breast cancer.^{10–12} The extent of survival benefit has been found by the Danish Breast Cancer Group to be

Correspondence: Zoltán Varga
Department of Oncotherapy,
University of Szeged, 12 Korányi Fásor,
Szeged 6720, Hungary
Tel +36 62 545 404
Fax +36 62 545 922
Email varga.zoltan@med.u-szeged.hu

similar in one to three and four or more lymph node-positive cases.¹² In sentinel lymph node-positive patients, the role of radiotherapy has not been fully clarified. The noninferiority of whole-breast radiotherapy versus complete axillary block dissection plus breast radiotherapy in cases with one to two positive sentinel lymph nodes was demonstrated in the American College of Surgeons Oncology Group (ACOSOG) Z0011 trial.¹³ Equal local and regional control rates have been ascribed to the irradiation of the level I axillary lymph nodes,^{13,14} though no solid data exist as yet to support this hypothesis. The extent to which the patients in the ACOSOG study¹³ received nodal radiotherapy is currently undergoing retrospective evaluation. The management of internal mammary (IM) nodes is controversial.¹⁵ In axillary node-positive cases, the risk of IM-node involvement increases significantly with the number of positive lymph nodes. The role of IM nodal irradiation in these high-risk patients, however, is still a subject of ongoing large randomized multicenter (European Organisation for Research and Treatment of Cancer [EORTC] and National Cancer Institute of Canada [NCIC]) trials.^{16,17} Approximately a quarter of the sentinel nodes are located in the IM chain, but their routine removal is not widely practised.¹⁸ Elective irradiation of the IM chain after sentinel biopsy may seem justified in rare cases.^{19,20} As the need to irradiate the nodal regions varies individually, careful control of the nodal dose is important in each case. A number of research groups have demonstrated that the dose to the axillary or sentinel lymph-node areas during supine breast irradiation with tangential fields is usually insufficient “therapeutically”.^{21–26} In the prone position, the axillary nodal doses are further decreased.^{21,22}

In this retrospective study, the goal was to analyze the radiation dose to the nodal regions, including the axillary and IM nodes, in a large set of 3-D conformal radiotherapy plans generated for whole-breast irradiation in either the prone or supine position.

Materials and methods

This retrospective study was based on the 3-D conformal radiotherapy plans of 100 consecutive breast cancer patients requiring radiotherapy of the operated breast. The patients had been included in a clinical study approved by the Institutional Review Board of the University of Szeged to investigate the effects of patient-related anatomic features on optimal positioning (prone versus supine) in left-sided breast cancer.⁴

All relevant technical details have been published previously.^{3,4} Briefly, computed tomography (CT) images

were acquired at 0.5 cm intervals throughout the entire planning volume. The target volume and OARs were contoured on the CT slices in the radiotherapy-planning system. The clinical target volume (operated breast) was contoured at the chest wall: breast parenchyma interface, 4 mm from the skin, cranially from the head of the clavicle, medially from the border of the sternum, and laterally and caudally from where the visible breast parenchyma and connective tissue verge. 3-D image reconstruction was used to check delineation. Planning target volumes (PTVs) were generated as described in Varga et al.⁴ The level I–III axillary and ipsilateral IM lymph-node regions were retrospectively contoured according to the Radiation Therapy Oncology Group (RTOG) contouring atlas,²⁷ as shown in Figure 1. IM nodes were contoured in the upper three intercostal spaces, with typically 18 slices being taken. The aim in either setup was equivalent target and nodal volume contouring.

CT-based 3-D treatment planning (XIO[®] version 4.2.0 convolution algorithm for photon-dose calculation; Elekta, Stockholm, Sweden) was performed in both the supine and prone positions, as detailed previously.^{3,4} Treatment plans were developed by applying conventional 6 MV tangential photon fields set up isocentrically, and a median of two (one to three) individually weighted 6/15 MV segmental fields superimposed on the tangential fields by using a multileaf collimator. All plans were generated by the same physicist (ZV) with the intent of ensuring similar coverage and dose homogeneity. A mean dose to the PTV of 50 Gy was aimed for.

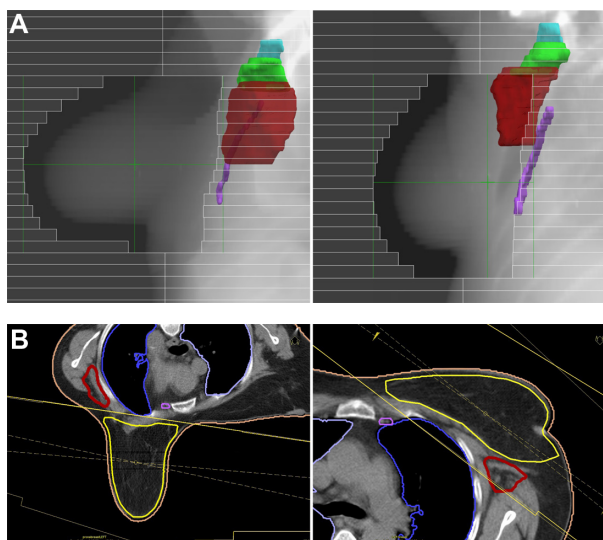


Figure 1 (A and B) Left-sided whole-breast irradiation. (A) Beam's eye view of the right anterior oblique field, with 3-D reconstruction of axillary levels I–III and internal mammary lymph-node regions in the prone and supine positions. (B) Typical field arrangements and their relation to the node regions.

For analysis of the dose distribution, the volume receiving 95%–107% of the total dose ($V_{95\%-107\%}$), the doses received by 5% and 95% of the PTV ($D_{5\%}/D_{95\%}$), and the conformation number were calculated using the following equation:

$$\text{Conformation number} = \frac{TV_{RI}}{TV} \times \frac{TV_{RI}}{V_{RI}} \quad (1)$$

where TV is target volume, ie, PTV , TV_{RI} is the target volume covered by the reference isodose, and V_{RI} is the volume of the reference isodose.²⁸

As regards the doses to the individual nodal regions, the mean doses and the volumes receiving >25 Gy (V_{25Gy}), >45 Gy (V_{45Gy}), and >47.5 Gy ($V_{47.5Gy}$) were evaluated retrospectively. For the analysis of the relation between the anatomical features of the patient and dose to nodal regions, the PTV, body mass index (BMI), volume of level I axillary lymph-node region, and breast separation³ were registered. The mean dose, V_{25Gy} , V_{45Gy} , and $V_{47.5Gy}$ of axillary level I and the homogeneity and conformity indices of the target volumes were compared in the prone versus supine position by using paired-sample t -tests.

Results

One hundred pairs of treatment plans were analyzed. The volumes of the treated breast, axillary levels I–III, and IM nodes are indicated in Table 1. No significant differences in the respective volumes were found between the prone and supine positions. The dose homogeneity within the PTV was better in the supine position: $V_{95\%-107\%}$ mean \pm standard error was $89.08\% \pm 0.14\%$ versus $91.92\% \pm 0.18\%$ in the prone versus supine position ($P < 0.001$); $D_{5\%}/D_{95\%}$ (mean \pm standard error) was 1.17 ± 0.01 versus 1.13 ± 0.01 in the prone versus supine position. Doses to the OARs were similar to those published previously for the whole study population.⁴

Table 1 Volumes of the irradiated breast (PTV) and the nodal regions in the prone and supine positions

Volumes	Prone (mean \pm SE, mm ³)	Supine (mean \pm SE, mm ³)	P (paired t-test)
PTV	971.6 \pm 44.0	967.3 \pm 44.4	0.380
Level I	61.6 \pm 2.0	62.7 \pm 2.2	0.306
Level II	14.2 \pm 0.4	13.9 \pm 1.2	0.792
Level III	6.0 \pm 0.2	5.9 \pm 0.2	0.451
IM	4.7 \pm 0.1	4.7 \pm 0.1	0.450

Note: The volumes of the PTV or the nodal regions did not differ in the prone versus the supine position.

Abbreviations: PTV, planning target volume; SE, standard error; IM, internal mammary.

In most cases, doses to axillary levels I–III and the IM lymph nodes were insufficient, regardless of the treatment position. The doses were significantly lower in the prone than in the supine position (Tables 2 and 3). The radiation doses to levels II and III and the IM nodes were especially low. The V_{45Gy} and $V_{47.5Gy}$ of the level I axillary lymph nodes were 54.6% and 40.2%, respectively, in the supine, and 3.0% and 1.7%, respectively, in the prone position. The number of patients who received a mean dose of ≥ 45 Gy to the level I axillary lymph nodes in the supine position was 17 (17%). No difference was found in the anatomical features of those whose axillary level I dose was higher or lower than 45 Gy (PTV, 1,073.3 versus 945.5 cm³; BMI, 28.6 versus 28.1 kg/m²; volume of level I axillary lymph-node region, 63.3 versus 62.5 cm³; breast separation, 22.3 versus 21.4 cm; respectively). None of the patients received ≥ 45 Gy to the other lymph-node regions.

Discussion

Our results clearly reveal that the radiation dose to the axillary and IM lymph nodes during whole-breast irradiation is therapeutically insufficient in most cases, and is significantly lower in the prone position than in the supine position.

In certain situations, such as sentinel and/or axillary lymph-node and lymphovascular invasion negativity, irradiation of the lymph-node areas may obviously be neglected. In other cases, however, the benefit of complete or partial nodal irradiation should be considered. In sentinel lymph node-positive cases, the probability that further positive regional lymph nodes are present varies with the nature of the primary tumor (size, grade, hormone-receptor status, and the presence of multifocality or lymphovascular invasion) and the number/rate of positive sentinel nodes. Nomograms utilizing the aforementioned tumor-related data are available for estimation of the involvement of the axillary lymph nodes.²⁹ Rarely, the lymph-node status remains unknown. If the risk of axillary lymph-node positivity

Table 2 Mean doses to the nodal regions in the prone and supine positions

Volumes	Mean dose \pm SE, Gy (range)		P (paired t-test)
	Prone	Supine	
Level I	6.6 \pm 0.6 (0.6–29.8)	37.7 \pm 0.7 (18.6–50.5)	<0.001
Level II	2.1 \pm 0.4 (0.6–30.4)	13.8 \pm 0.1 (0.7–45.8)	<0.001
Level III	0.5 \pm 0.1 (0.1–6.2)	1.6 \pm 0.2 (0.3–12.6)	<0.001
IM	6.2 \pm 0.6 (1.4–48.9)	15.3 \pm 6.2 (2.6–38.7)	<0.001

Note: The mean doses to axillary levels I–III and the internal mammary (IM) lymph nodes were significantly lower in the prone position than in the supine position.

Abbreviation: SE, standard error.

Table 3 Dosimetric values in the nodal regions in the prone and supine positions ($P < 0.001$)

	V_{25Gy} , mean \pm SE, % (range)		V_{45Gy} , mean \pm SE, % (range)		$V_{47.5Gy}$, mean \pm SE, % (range)	
	Prone	Supine	Prone	Supine	Prone	Supine
Level I	9.4 \pm 1.3 (0–58.9)	77.3 \pm 1.5 (35.1–99.9)	3.0 \pm 0.7 (0–39.8)	54.6 \pm 2.1 (0.8–97.5)	1.7 \pm 0.5 (0–31.7)	40.2 \pm 2.2 (0–94.2)
Level II	1.8 \pm 0.8 (0–64.2)	24.3 \pm 2.6 (0–99.8)	0.4 \pm 0.3 (0–28.4)	5.5 \pm 1.3 (0–69.0)	0.1 \pm 0.1 (0–14.1)	1.9 \pm 0.7 (0–49.8)
Level III	0.01 \pm 0.0 (0–1.5)	0.6 \pm 0.2 (0–17.1)	0	0	0	0
IM	4.9 \pm 1.1 (0–60.3)	25.5 \pm 2.6 (0–79.9)	0.1 \pm 0.1 (0–13.8)	4.9 \pm 0.9 (0–60.0)	0.1 \pm 0.1 (0–7.0)	2.5 \pm 0.7 (0–47.8)

Note: Doses to axillary levels I–III and the internal mammary (IM) lymph nodes were significantly lower in the prone position than in the supine position.

Abbreviation: SE, standard error.

is high, complementary local treatment, such as axillary block dissection or regional irradiation, is justified in order to eradicate persistent regional disease. In such cases, an individualized approach has been suggested, with the identification and irradiation of different target volumes (axillary levels I–III and supraclavicular lymph nodes) in accordance with the risk of their involvement.¹⁴ Sentinel lymph nodes are present in the IM region in about 20%–30% of cases, but their routine biopsy is not justified. If they become positive, radiotherapy of the IM region appears reasonable, but this approach (which certainly increases the lung and heart doses in left-sided cases) has not yet been validated in clinical practice. The results of the present study and other analyses^{21–26} demonstrate that when irradiation of any of the axillary lymph-node levels or the IM lymph nodes is required, special attention should be paid to the doses to these target volumes; in most cases, the conventional tangential fields must be modified to meet the dosimetric need. Although prone radiotherapy is traditionally limited to the operated breast, efforts have been made to extend prone radiotherapy to patients who need irradiation of the axillary and supraclavicular lymph-node regions, through the use of conformal radiotherapy,³⁰ helical tomotherapy,³¹ or intensity-modulated radiation therapy.³² Therefore, in order to maintain the advantages of prone positioning, the target volume could be extended to the lymph nodes; nevertheless, the feasibility and repositioning accuracy of the method need to be investigated.

In our study, nodal regions were contoured with regard to their anatomical boundaries based on the RTOG atlas.²⁷ In the supine position, around half of the axillary level I volume was exposed to 45 Gy on average, and the irradiation of such a significant part harboring residual disease may well be of clinical significance; this is obviously not the case if radiotherapy is performed in the prone position.

Our findings are consistent with those of two other conformal radiotherapy studies that compared doses to the three axillary lymph-node levels in the prone versus the supine position during whole-breast irradiation.^{21,22} Alonso-Basanta et al

studied the radiation-treatment plans (prone or supine) of 20 patients,²¹ and Leonard et al compared the plans for 23 patients in the prone and 23 patients in the supine position.²² Both studies led to the conclusion that the coverage of the three axillary nodal levels was inadequate in either position, but the doses were even lower in the prone than in the supine position. Our study on 100 patients provides additional information indicating that breast radiotherapy does not provide relevant coverage of the IM nodes in either the prone or the supine position.

In the prone position, the geography of the breast and the chest wall changes, and the conformity of the treatment plan is improved as less volume is irradiated outside the PTV.⁴ In fact, not only are the conventionally identified OARs better spared from irradiation, but the volumes containing the regional lymph nodes are nearly completely excluded from the irradiated volume. While we found a mean dose of 45 Gy to the level I axillary lymph nodes in 17% of the patients in the supine position, none of the patients in the prone position received a relevant dose to any of the regional lymph nodes. The difference of nodal coverage between the two positions should be considered, since the irradiation of the regional lymph nodes may be individually beneficial or unnecessary. The supine position should be preferred, and the dose to the level I axillary nodes should be carefully checked if its therapeutic irradiation is an aim. Due to the changes of the shape of the irradiated breast, however, in accordance with our previous findings,³ the dose inhomogeneity within the target volume was higher in the prone position, which may be considered as a disadvantage of the technique. Similarly, despite the different dose-prescription strategy and the use of the field-in-field technique in the prone position only, worse homogeneity index values and larger maximum dose, indicating greater dose inhomogeneity, were found in the prone position in the dosimetric study of Ramella et al.³³

Conclusion

The radiation dose to the axillary and IM lymph nodes during breast radiotherapy is therapeutically insufficient in most cases, and is lower in the prone than in the supine position.

Attention should be paid to the specific targeting of lymph-node areas if this is clinically necessary.

Author contributions

MC participated in the preparation, acquisition, analysis, and interpretation of data, and made contributions to the drafting of the manuscript. DU participated in the preparation, acquisition, analysis, and interpretation of data. AC was involved in the design and conception of the study, and checked the preparation of the data. ZK participated in the conception and design of the study, the analysis and interpretation of the data, and the drafting of the manuscript. ZV participated in the conception and design of the study, carried out the collection and analysis of the data, was involved in the drafting of the manuscript, and carried out all statistical analyses. All authors contributed toward data analysis, drafting and revising the paper and agree to be accountable for all aspects of the work.

Disclosure

The authors report no conflicts of interest in this work.

References

- Formenti SC, Gidea-Addeo D, Goldberg JD, et al. Phase I–II trial of prone accelerated intensity modulated radiation therapy to the breast to optimally spare normal tissue. *J Clin Oncol*. 2007;25:2236–2242.
- Formenti SC, DeWyngaert JK, Jozsef G, Goldberg JD. Prone vs supine positioning for breast cancer radiotherapy. *JAMA*. 2012;308:861–863.
- Varga Z, Hideghéty K, Mezo T, Nikolényi A, Thurzó L, Kahán Z. Individual positioning: a comparative study of adjuvant breast radiotherapy in the prone versus supine position. *Int J Radiat Oncol Biol Phys*. 2009;75:94–100.
- Varga Z, Cserháti A, Ráosi F, et al. Individualized positioning for maximum heart protection during breast irradiation. *Acta Oncol*. 2014;53:58–64.
- Kirby AM, Evans PM, Donovan EM, Convery HM, Haviland JS, Yarnold JR. Prone versus supine positioning for whole and partial-breast radiotherapy: a comparison of non-target tissue dosimetry. *Radiother Oncol*. 2010;96:178–184.
- Mitchell J, Formenti SC, DeWyngaert JK. Interfraction and intrafraction setup variability for prone breast radiation therapy. *Int J Radiat Oncol Biol Phys*. 2010;76:1571–1577.
- Kirby AM, Evans PM, Helyer SJ, et al. A randomised trial of supine versus prone breast radiotherapy (SuPr study): comparing set-up errors and respiratory motion. *Radiother Oncol*. 2011;100:221–226.
- Fernández-Lizarbe E, Montero A, Polo A, et al. Pilot study of feasibility and dosimetric comparison of prone versus supine breast radiotherapy. *Clin Transl Oncol*. 2013;15:450–459.
- Stegman LD, Beal KP, Hunt MA, Fornier MN, McCormick B. Long-term clinical outcomes of whole-breast irradiation delivered in the prone position. *Int J Radiat Oncol Biol Phys*. 2007;68:73–81.
- Ragaz J, Olivetto IA, Spinelli JJ, et al. Locoregional radiation therapy in patients with high-risk breast cancer receiving adjuvant chemotherapy: 20-year results of the British Columbia randomized trial. *J Natl Cancer Inst*. 2005;97:116–126.
- Whelan TJ, Olivetto I, Ackerman I, et al. NCIC-CTG MA.20: an intergroup trial of regional nodal irradiation in early breast cancer. *J Clin Oncol*. 2011;29 Suppl:LBA1003.
- Overgaard M, Nielsen HM, Overgaard J. Is the benefit of postmastectomy irradiation limited to patients with four or more positive nodes, as recommended in international consensus reports? A subgroup analysis of the DBCG 82 b&c randomized trials. *Radiother Oncol*. 2007;82:247–253.
- Giuliano AE, Hunt KK, Ballman KV, et al. Axillary dissection vs no axillary dissection in women with invasive breast cancer and sentinel node metastasis: a randomized clinical trial. *JAMA*. 2011;305:569–575.
- Haffty BG, Hunt KK, Harris JR, Buchholz TA. Positive sentinel nodes without axillary dissection: implications for the radiation oncologist. *J Clin Oncol*. 2011;29:4479–4481.
- Hennequin C, Bossard N, Servagi-Vernat S, et al. Ten-year survival results of a randomized trial of irradiation of internal mammary nodes after mastectomy. *Int J Radiat Oncol Biol Phys*. 2013;86:860–866.
- Matzinger O, Heimsoth I, Poortmans P, et al.; EORTC Radiation Oncology & Breast Cancer Groups. Toxicity at three years with and without irradiation of the internal mammary and medial supraclavicular lymph node chain in stage I to III breast cancer (EORTC trial 22922/10925). *Acta Oncol*. 2010;49(1):24–34.
- Olivetto IA, Chua B, Elliott EA, et al: A clinical trial of breast radiation therapy versus breast plus regional radiation therapy in early-stage breast cancer: The MA20 trial. *Clin Breast Cancer* 2003;4:361–363.
- Postma EL, van Wieringen S, Hobbelink MG, et al. Sentinel lymph node biopsy of the internal mammary chain in breast cancer. *Breast Cancer Res Treat*. 2012;134:735–741.
- Coombs NJ, Boyages J, French JR, Ung OA. Internal mammary sentinel nodes: ignore, irradiate or operate? *Eur J Cancer*. 2009;45:789–794.
- Bourre JC, Payan R, Collomb D, et al. Can the sentinel lymph node technique affect decisions to offer internal mammary chain irradiation? *Eur J Nucl Med Mol Imaging*. 2009;36:758–764.
- Alonso-Basanta M, Ko J, Babcock M, Dewyngaert JK, Formenti SC. Coverage of axillary lymph nodes in supine vs prone breast radiotherapy. *Int J Radiat Oncol Biol Phys*. 2009;73:745–751.
- Leonard KL, Solomon D, Hepel JT, Hiatt JR, Wazer DE, DiPetrillo TA. Axillary lymph node dose with tangential whole breast radiation in the prone versus supine position: a dosimetric study. *Radiat Oncol*. 2012;7:72.
- Krasin M, McCall A, King S, Olson M, Emami B. Evaluation of a standard breast tangent technique: a dose-volume analysis of tangential irradiation using three-dimensional tools. *Int J Radiat Oncol Biol Phys*. 2000;47:327–333.
- Reed DR, Lindsley SK, Mann GN, et al. Axillary lymph node dose with tangential breast irradiation. *Int J Radiat Oncol Biol Phys*. 2005;61:358–364.
- Reznik J, Cicchetti MG, Degaspe B, Fitzgerald TJ. Analysis of axillary coverage during tangential radiation therapy to the breast. *Int J Radiat Oncol Biol Phys*. 2005;61:163–168.
- Belkacemi Y, Allab-Pan Q, Bigorie V, et al. The standard tangential fields used for breast irradiation do not allow optimal coverage and dose distribution in axillary levels I–II and the sentinel node area. *Ann Oncol*. 2013;24:2023–2028.
- Li XA, Tai A, Arthur DW, et al. Variability of target and normal structure delineation for breast cancer radiotherapy: an RTOG multi-institutional and multiobserver study. *Int J Radiat Oncol Biol Phys*. 2009;73:944–951.
- Feuvret L, Noël G, Mazeron JJ, Bey P. Conformity index: a review. *Int J Radiat Oncol Biol Phys*. 2006;64:333–342.
- Zhu L, Jin L, Li S, et al. Which nomogram is best for predicting non-sentinel lymph node metastasis in breast cancer patients? A meta-analysis. *Breast Cancer Res Treat*. 2013;137:783–795.

30. Giolda BT, Strauss JB, Marsh JC, Turian JV, Griem KL. A dosimetric comparison between the supine and prone positions for three-field intact breast radiotherapy. *Am J Clin Oncol*. 2011;34:223–230.
31. Kainz K, White J, Chen GP, Hermand J, England M, Li XA. Simultaneous irradiation of the breast and regional lymph nodes in prone position using helical tomotherapy. *Br J Radiol*. 2012;85:e899–e905.
32. Sethi RA, No HS, Jozsef G, Ko JP, Formenti SC. Comparison of three-dimensional versus intensity-modulated radiotherapy techniques to treat breast and axillary level III and supraclavicular nodes in a prone versus supine position. *Radiother Oncol*. 2012;102:74–81.
33. Ramella S, Trodella L, Ippolito E, et al. Whole-breast irradiation: a subgroup analysis of criteria to stratify for prone position treatment. *Med Dosim*. 2012;37:186–191.

Therapeutics and Clinical Risk Management

Dovepress

Publish your work in this journal

Therapeutics and Clinical Risk Management is an international, peer-reviewed journal of clinical therapeutics and risk management, focusing on concise rapid reporting of clinical studies in all therapeutic areas, outcomes, safety, and programs for the effective, safe, and sustained use of medicines. This journal is indexed on PubMed Central, CAS,

EMBASE, Scopus and the Elsevier Bibliographic databases. The manuscript management system is completely online and includes a very quick and fair peer-review system, which is all easy to use. Visit <http://www.dovepress.com/testimonials.php> to read real quotes from published authors.

Submit your manuscript here: <http://www.dovepress.com/therapeutics-and-clinical-risk-management-journal>