



Published in final edited form as:

J Neurol Sci. 2014 June 15; 341(0): 73–78. doi:10.1016/j.jns.2014.04.005.

Tractography reveals diffuse white matter abnormalities in Myotonic Dystrophy Type 1

Jeffrey R. Wozniak¹, Bryon A. Mueller¹, Kelvin O. Lim¹, Laura S. Hemmy¹, and John W. Day²

¹Department of Psychiatry, University of Minnesota – Twin Cities, F256/2B West, 2450 Riverside Ave., Minneapolis, MN 55454

²Department of Neurology, Stanford University, 300 Pasteur Drive, Room A301, MC 5325, Stanford, CA 94305

Abstract

Cerebral involvement in Myotonic Dystrophy Type 1 (DM1) is well-established but not well characterized. This study applied new Diffusion Tensor Imaging (DTI) tractography to characterize white matter disturbance in adults with DM1. Forty-five participants with DM1 and 44 control participants had MRIs on a Siemens 3T TIM Trio scanner. Data were processed with TRActs Constrained by UnderLying Anatomy (TRACULA) and 7 tracts were evaluated. Bilateral disturbances in white matter integrity were seen in all tracts in participants with DM1 compared to controls. There were no right-left hemisphere differences. The resulting DTI metrics were correlated with cognitive functioning, particularly working memory and processing speed. Motor speed was not significantly correlated with white matter microstructural integrity and, thus, was not the core explanation for the working memory and processing speed findings. White matter integrity was correlated with important clinical variables including the muscular impairment rating scale (MIRS). CTG repeat length was moderately associated with white matter status in corticospinal tract and cingulum. Sleepiness (Epworth Sleepiness Scale) was moderately associated with white matter status in the superior longitudinal fasciculus and cingulum. Overall, the results add to an emerging literature showing widespread white matter disturbances in both early-onset and adult-onset DM1. Results suggest that further investigation of white matter pathology is warranted in DM1 and that non-invasive measures such as DTI have potentially important clinical value in characterizing the status of individuals with DM1.

Keywords

Myotonic Dystrophy; Brain; MRI; Diffusion Tensor Imaging; White Matter; Neuropsychology

© 2014 Elsevier B.V. All rights reserved.

Correspondence / reprints requests: Jeffrey R. Wozniak, Ph.D., Department of Psychiatry, University of Minnesota, F256/2B West, 2450 Riverside Ave., Minneapolis, MN 55454, 1-612-273-9741, jwozniak@umn.edu.

Publisher's Disclaimer: This is a PDF file of an unedited manuscript that has been accepted for publication. As a service to our customers we are providing this early version of the manuscript. The manuscript will undergo copyediting, typesetting, and review of the resulting proof before it is published in its final citable form. Please note that during the production process errors may be discovered which could affect the content, and all legal disclaimers that apply to the journal pertain.

1. Introduction

Myotonic Dystrophy Type 1 (DM1), the most common form of muscular dystrophy in adults, is a multi-faceted genetic disease caused by CTG repeat expansion in the dystrophin myotonia protein kinase (DMPK) gene located on chromosome 19q13.3 (1). In addition to profound effects in muscular, ocular, gonadal, cardiac and endocrine systems (2–5), there are widespread effects in brain (6). Although the congenital-onset form of the disease is often associated with significant intellectual impairment (7, 8), adult-onset DM1 is characterized by average or low-average IQ, often accompanied by impairments in attention, memory, and executive functioning (8–14).

The neuropathology underlying these cognitive differences in DM1 is not well understood. Neurofibrillary tangles and senile plaques have been observed in DM1, especially in older patients (15). Pathological tau proteins have been observed in hippocampus and inferior temporal cortex in DM1 (16). A case report indicated severe loss and disordered arrangement of myelin in temporal white matter in a patient with DM1 (17) and another study reported mutant RNA foci in various locations throughout the brain including sub-cortical white matter and corpus callosum (18).

Neuroimaging studies examining white matter in DM1 have frequently revealed non-specific hyperintensities in subcortical, periventricular, and temporal white matter (19–22). Only a handful of studies have examined the microstructural integrity of white matter using newer imaging techniques such as Diffusion Tensor Imaging (DTI). One DTI study found abnormal white matter integrity in several specific tracts including the corpus callosum (23). Ota et al. suggested that the DTI abnormalities seen might be the result of Wallerian degeneration of axons following atrophy in the cortical grey matter. Others have argued against Wallerian degeneration, citing the predominance of white matter disease in comparison to gray matter effects in DM1 (24). Minnerop et al. reported abnormalities in white matter tracts throughout the brain including the callosum, projection fibers, association fibers, and motor pathways. One other study by Fukuda et al. (25) reported lower fractional anisotropy (FA), a measure of white matter integrity, in those with DM1 compared to controls. Naka et al. (26) provided converging evidence of white matter abnormalities in normal-appearing white matter using a different imaging technique, magnetization transfer imaging (MTI). Similarly, DiCostanzo et al. (27) showed widespread white matter disruption in DM1 with T2-relaxometry.

The current study utilized newly available DTI tractography methods to extend the investigation into possible regional patterns of white matter abnormalities in DM1 and to increase our understanding of relationships between white matter disturbance and important clinical variables including cognitive functioning in this population. This study represents the largest sample of patients with DM1 examined with DTI to date.

2. Methods

2.1 Informed Consent

All participants underwent a comprehensive informed consent procedure that included a discussion of the study and a signed consent form. All procedures were reviewed and approved by the University of Minnesota institutional review board.

2.2 Participants

Forty-five participants (21 male, 24 female) with DM1 and 46 control participants (18 male, 28 female) were studied. Participant characteristics are listed in Table 1. Patients were recruited from a University-based myotonic dystrophy clinic. Diagnoses were established by polymerase chain reaction (PCR) and southern blot. The mean age of the groups was equivalent for patients (38.4 years) and controls (38.5 years). CTG repeats ranged from 75 to 800, with an average of 387. Congenital/infantile-onset DM1 patients were not included in the study. Attempts to retrospectively define “age of onset” of DM1 for these patients yielded imprecise estimates, with a range of symptoms appearing across wide developmental spans in many individuals and, so, these data are not reported here. The sample included cases that were diagnosed during adolescence or adulthood. Scores on the Muscular Impairment Rating Scale (MIRS) (28), completed by participants with DM1, ranged from 1 to 4 with a mean of 3.15. Scores on the Epworth Sleepiness Scale (29), completed by those with DM1, ranged from 1 to 13 with a mean of 7.44. Control participants, who were age-matched and gender-matched, were recruited from the community. Other neurological disorders, including traumatic brain injury, were exclusionary for all participants. Control participants were excluded for psychiatric disorder, learning disability, or below-average IQ (more than 1 standard deviation below normal).

2.3 Neuropsychological Assessment

Subjects completed the following neuropsychological measures: the Wechsler Test of Adult Reading (30) (as a proxy measure of premorbid IQ), Wechsler Adult Intelligence Scale (3rd ed.) (31) [Vocabulary, Block Design, Matrix Reasoning, Digit Span, Digit-Symbol, Letter-Number Sequencing, and Symbol Search subtests], the Grooved Pegboard test (32), the Delis-Kaplan Executive Functioning System (D-KEFS) [Trailmaking, Tower Test, and Verbal Fluency], the Wisconsin Card Sorting Test (WCST) (33), and the California Verbal Learning Test (CVLT-II) (34). All neuropsychological instruments were administered by a trained research assistant under the supervision of a neuropsychologist (J.R.W. or L.S.H.). Intelligence Quotient (IQ) was estimated with the Oklahoma Premorbid Intelligence Estimate – 3 (OPIE-3) (35).

2.4 MRI acquisition and processing

Subjects were scanned using a Siemens 3T TIM Trio MRI scanner with 12-channel receive-only head coil. The imaging sequence and parameters for each scan are listed in Table 2. Participants were not sedated for the MRI scan.

2.5 MRI processing

Image data were processed using the TRACULA (Tracts Constrained by Underlying Anatomy) processing stream (36), a component of the Freesurfer 5.3.0 Software Library (<http://surfer.nmr.mgh.harvard.edu/>). This processing stream consists of four parts: 1) Freesurfer segmentation and parcellation of the structural T1 data to define specific anatomic regions; 2) preprocessing of the DTI data including affine registration to correct for motion and eddy current effects, B0 distortion correction using the field map data, computation of the diffusion tensor and registration to the T1 data; 3) ball and stick modeling of the diffusion data; 4) probabilistic tracking and track determination. TRACULA utilizes known anatomy of the major white matter tracts to constrain a probabilistic mapping algorithm, allowing for reliable tract reconstruction with minimal user input. We examined the following tracts that were mapped and auto-labeled by TRACULA: corticospinal tracts (CST), inferior longitudinal fasciculus (ILF), uncinate fasciculus, cingulum bundle (supra-callosal and infra-callosal components combined), superior longitudinal fasciculus (SLF) (parietal and temporal components combined), forceps major, and forceps minor. Figure 1 illustrates these tracts. Note that TRACULA does not generate a whole corpus callosum tract, but instead identifies the large tracts passing through the genu (forceps minor) and the splenium (forceps major). Two scalar measures were derived from the tensor: Fractional Anisotropy or FA (the fraction of the magnitude of the tensor that is due to anisotropic water diffusion (37)) and Mean Diffusivity or MDiff (the mean of the three eigenvalues). For each tract, the mean FA and MDiff were computed from all of the voxels in the tract.

3. Results

As indicated in Table 1, the groups did not differ in age, gender, or handedness. There was a modest difference in education, with control participants having approximately two more years than those with DM1. There was also a small but significant group difference in estimated IQ, with the control group approximately 6–10 points higher than those with DM1. Comparison of the Wechsler Vocabulary and Matrix Reasoning subtests suggests the controls had higher scores than those with DM1 particularly in verbal IQ rather than non-verbal IQ.

Table 3 contains results from t-tests comparing the groups on measures of neurocognitive performance. As expected, patients with DM1 performed significantly below controls on measures of working memory (short-term memory / concentration), processing speed, motor speed, and some aspects of executive functioning. Those with DM1 performed below controls on the Trailmaking subtest, which required working memory and flexible shifting of attention. In addition, the DM1 group performed below controls on the category-switching component of the Verbal Fluency subtest (there were no differences in basic phonemic-fluency or category fluency). In contrast, there were no group differences for the Wisconsin Card Sorting test (a measure of systematic problem-solving and mental flexibility), nor were there differences in verbal memory. Grooved Pegboard performance indicated significant slowing in basic motor speed for those with DM1.

An ANOVA tested for differences in FA by group (control vs. DM1), hemisphere (right vs. left), and white matter tract (see Table 4 for list of tracts). The overall ANOVA was significant, $F(31,1455)=163.38$, $p<.001$. The group by hemisphere interaction was non-significant, $F(1, 1455)=.580$, $p=.446$ and, therefore, the right and left hemisphere tracts were averaged together for remaining analyses. The group by tract interaction was significant, $F(1,1455)=17.98$, $p<.001$. Therefore, group differences (control vs. DM1) in FA were examined for all tracts. To reduce the number of analyses, the two components of the cingulum (supra-callosal and infra-callosal) were averaged together and the two components of the SLF (parietal and temporal) were averaged together. Group differences are illustrated in Table 4.

A second ANOVA tested for differences in mean diffusivity (MDiff) by group, hemisphere, and tract. The overall ANOVA was significant, $F(31,1455)=104.48$, $p<.001$. The group by hemisphere interaction was non-significant, $F(1,1455)=0.0$, $p=1.0$ and, therefore, right and left hemisphere tracts were averaged together for remaining analyses. The group by tract interaction was significant, $F(1,1455)=13.0$, $p<.001$. Therefore, group differences in MDiff were examined for all tracts. As above, the averaged cingulum and SLF components were examined. Group differences are illustrated in Table 4. Effect sizes were large for MDiff in all tracts and FA in all but one tract, indicating that there are substantial, meaningful abnormalities in white matter integrity in DM1 compared to controls.

Pearson correlations were used to test the relationships between cognitive functioning and white matter status. These correlations were done for the DM1 group only in order to avoid the confounding effects of group differences in cognitive functioning, white matter integrity, and other related factors such as education level and IQ. In order to reduce the number of correlations, only MDiff was examined from the 7 tracts (right and left tracts were averaged together). MDiff was chosen because it appeared to be the more sensitive of the two DTI metrics to the group differences (DM1 vs. control) in white matter status. Only cognitive measures that showed significant group differences (DM1 vs. control) were analyzed. Because Grooved Pegboard dominant-hand and non-dominant hand performance were highly correlated with each other ($r=.90$, $p<.001$), these scores were averaged together for subsequent analysis. As shown in Table 5, the results demonstrate strong relationships between white matter integrity in nearly all tracts and working memory, with the exception of the forceps major. Similarly, strong relationships were also seen with processing speed in the corticospinal tracts, SLF, cingulate, and uncinata. The correlations between white matter status and measures of executive functioning and motor functioning were much lower and were all non-significant.

Of the two cognitive domains that were associated with white matter integrity (working memory and processing speed), Pearson correlations show that neither was significantly correlated with education level for those in the DM1 group ($r=.302$, $p=.126$ for Working Memory Index (WMI) and $r=.363$, $p=.063$ for Processing Speed Index (PSI)). In contrast, estimated IQ was significantly correlated with WMI ($r=.542$, $p<.001$) and PSI ($r=.580$, $p<.001$). Nonetheless, follow-up partial correlation analyses revealed that the correlations between both WMI and PSI and white matter status in each of the tracts remained significant at the $p<.01$ level after controlling for IQ.

Lastly, relationships between white matter status and three important clinical variables were examined. As shown in Table 6, CTG repeat length was correlated with MDiff in the corticospinal tracts and cingulum. MIRS scores were strongly associated with white matter integrity in all tracts with the exception of the forceps major. Sleepiness, as defined by the Epworth Sleepiness Scale, was moderately associated with MDiff in the SLF and cingulum.

4. Discussion

Consistent with our previous findings in adults with DM1 (38) and our findings in child and adolescent patients with early-onset DM1 (39), the data presented here clearly show significant white matter abnormalities throughout the brain in DM1. Seven specific white matter tracts were examined and all showed highly significant abnormalities in the DM1 group compared to control participants. Nearly all DTI studies of DM1 thus far have shown diffuse white matter abnormalities of this type as opposed to focal disruption. Takaba et al. (40), found widespread abnormalities (low FA and high MDiff) in DM1. Fukuda et al. (25) demonstrated that these measureable microstructural abnormalities are not only evident in abnormal-appearing white matter (i.e. hyperintensities), but also in normal-appearing white matter. Minnerop et al. (24) showed significant white matter disruption in DM1 in all regions examined. We reported very large (16–27%) differences in DTI metrics in a previous study of adults with DM1 (38) and similarly large (8–22%) differences in two studies of children / adolescents with DM1 (39, 41).

Participants in this study demonstrated several cognitive deficits that are frequently seen in DM1 and thought to be clinically relevant (42) including working memory, processing speed, attentional switching, and motor speed. Although significant executive deficits, such as those reflected by the Wisconsin Card Sorting Test, have been reported in DM1 (11, 13, 43), these may be less severe in more mildly-affected individuals (12) and were absent in our sample of patients with relatively intact IQ. Overall there was ample evidence that the observed white matter abnormalities are clinically important in DM1. Strong associations between white matter status and cognition were observed for working memory ability and processing speed. These two neurocognitive domains were correlated with MDiff in nearly all of the tracts examined. We observed similar relationships between working memory task performance and MDiff in multiple brain regions in patients with early-onset DM1 (41). Furthermore, these data also show significant relationships between white matter status and processing speed in multiple tracts including the corticospinal tracts, SLF, and cingulum. In contrast, correlations between white matter tract integrity and a measure of basic motor speed (grooved pegboard) were lower and non-significant. Thus, if white matter abnormalities do contribute to the cognitive impairment seen in MDiff, it does not appear to be strictly a function of simple motor delays.

We also observed a strong association between the level of white matter abnormality and muscular impairment, as measured by the MIRS. Minnerop et al. (24) observed similar associations with MIRS scores. This suggests that DTI metrics may be providing a useful index of overall disease burden in the CNS. CTG repeat-length, as measured in blood, is an imperfect index of disease severity because of the variable expression across tissue types. A number of studies have found significant correlations between CTG-repeats and macro-level

measures like IQ (13, 44, 45) or the extent of white matter disease (19), but some have not found an association (23, 46, 47). In the current study, we observed a relationship with MDiff in two tracts, the corticospinal tract and cingulum. Minnerop et al. (24) also reported an association between FA and CTG repeat length. Lastly, we report modest correlations between MDiff in two tracts (SLF and cingulum) and sleepiness. Both sleepiness and fatigue are common clinical features of DM1, occurring in a large percentage of patients (48, 49), and future studies may help to further characterize the role of sleepiness/fatigue in the cognitive impairment seen in DM1.

At this point, there remains much to be learned about the underlying neuropathology that is reflected in DTI studies of DM1. DTI metrics are non-specific and could potentially reflect changes in myelin, axonal membrane integrity, microtubule/neurofilament structure, fast axonal transport within axons, differences in extra-axonal water between axons (50–52), or other underlying pathology. Hernandez-Hernandez (53) have speculated that abnormalities in synaptic proteins in cell membranes seen in both a mouse model of DM1 (DMSXL) and human DM1 brain tissue could represent an underlying pathophysiology that might be reflected in DTI changes like those seen here. Although limited in specificity, DTI metrics do provide unique, non-invasive measures of white matter status that have important clinical correlation. Ultimately, DTI measures may prove to be clinically useful, likely in conjunction with a broad set of neurocognitive measures, in fully characterizing the disease status in individuals with DM1.

5. Conclusion

In conclusion, the current study adds to the small existing body of studies that show diffuse white matter abnormalities in DM1. Consistent with previous studies, we observed significant relationships between white matter integrity, as measured by DTI, and cognitive functioning. This was especially true for working memory and processing speed. Future studies examining the role of sleepiness and fatigue as potential moderating / mediating factors in cognitive dysfunction in DM1 will be worthwhile.

References

1. Brook JD, McCurrach ME, Harley HG, Buckler AJ, Church D, Aburatani H, et al. Molecular basis of myotonic dystrophy: expansion of a trinucleotide (CTG) repeat at the 3' end of a transcript encoding a protein kinase family member. *Cell*. 1992; 68(4):799–808. [PubMed: 1310900]
2. Sovari AA, Bodine CK, Farokhi F. Cardiovascular manifestations of myotonic dystrophy-1. *Cardiol Rev*. 2007; 15(4):191–194. [PubMed: 17575483]
3. Schara U, Schoser BG. Myotonic dystrophies type 1 and 2: a summary on current aspects. *Semin Pediatr Neurol*. 2006; 13(2):71–79. [PubMed: 17027856]
4. Anastasopoulos D, Kimmig H, Mergner T, Psilas K. Abnormalities of ocular motility in myotonic dystrophy. *Brain : a journal of neurology*. 1996; 119(Pt 6):1923–1932. [PubMed: 9009998]
5. Jozefowicz RF, Griggs RC. Myotonic dystrophy. *Neurol Clin*. 1988; 6(3):455–472. [PubMed: 3065594]
6. Meola G, Sansone V. Cerebral involvement in myotonic dystrophies. *Muscle & nerve*. 2007; 36(3): 294–306. [PubMed: 17486579]
7. Corsari B, Danni M, Del Pesce M, Provinciali L. Neuropsychological profile in myotonic dystrophy. *Journal of neurology*. 1990; 237(4):251–256. [PubMed: 2391548]

8. Modoni A, Silvestri G, Pomponi MG, Mangiola F, Tonali PA, Marra C. Characterization of the pattern of cognitive impairment in myotonic dystrophy type 1. *Arch Neurol*. 2004; 61(12):1943–1947. [PubMed: 15596617]
9. Gaul C, Schmidt T, Windisch G, Wieser T, Muller T, Vielhaber S, et al. Subtle cognitive dysfunction in adult onset myotonic dystrophy type 1 (DM1) and type 2 (DM2). *Neurology*. 2006; 67(2):350–352. [PubMed: 16864839]
10. Malloy P, Mishra SK, Adler SH. Neuropsychological deficits in myotonic muscular dystrophy. *Journal of Neurology, Neurosurgery and Psychiatry*. 1990; 53(11):1011–1013.
11. Meola G, Sansone V, Perani D, Scarone S, Cappa S, Dragoni C, et al. Executive dysfunction and avoidant personality trait in myotonic dystrophy type 1 (DM-1) and in proximal myotonic myopathy (PROMM/DM-2). *Neuromuscular Disorders*. 2003; 13(10):813–821. [PubMed: 14678804]
12. Rubinsztein JS, Rubinsztein DC, McKenna PJ, Goodburn S, Holland AJ. Mild myotonic dystrophy is associated with memory impairment in the context of normal general intelligence. *Journal of Medical Genetics*. 1997; 34(3):229–233. [PubMed: 9132495]
13. Winblad S, Lindberg C, Hansen S. Cognitive deficits and CTG repeat expansion size in classical myotonic dystrophy type 1 (DM1). *Behav Brain Funct*. 2006; 2:16. [PubMed: 16696870]
14. Weber YG, Roebeling R, Kassubek J, Hoffmann S, Rosenbohm A, Wolf M, et al. Comparative analysis of brain structure, metabolism, and cognition in myotonic dystrophy 1 and 2. *Neurology*. 2010; 74(14):1108–1117. [PubMed: 20220122]
15. Kiuchi A, Otsuka N, Namba Y, Nakano I, Tomonaga M. Presenile appearance of abundant Alzheimer's neurofibrillary tangles without senile plaques in the brain in myotonic dystrophy. *Acta neuropathologica*. 1991; 82(1):1–5. [PubMed: 1950473]
16. Vermersch P, Sergeant N, Ruchoux MM, Hofmann-Radvanyi H, Wattez A, Petit H, et al. Specific tau variants in the brains of patients with myotonic dystrophy. *Neurology*. 1996; 47(3):711–717. [PubMed: 8797469]
17. Ogata A, Terae S, Fujita M, Tashiro K. Anterior temporal white matter lesions in myotonic dystrophy with intellectual impairment: an MRI and neuropathological study. *Neuroradiology*. 1998; 40(7):411–415. [PubMed: 9730337]
18. Jiang H, Mankodi A, Swanson MS, Moxley RT, Thornton CA. Myotonic dystrophy type 1 is associated with nuclear foci of mutant RNA, sequestration of muscleblind proteins and deregulated alternative splicing in neurons. *Human Molecular Genetics*. 2004; 13(24):3079–3088. [PubMed: 15496431]
19. Bachmann G, Damian MS, Koch M, Schilling G, Fach B, Stoppler S. The clinical and genetic correlates of MRI findings in myotonic dystrophy. *Neuroradiology*. 1996; 38(7):629–635. [PubMed: 8912317]
20. Glantz RH, Wright RB, Huckman MS, Garron DC, Siegel IM. Central nervous system magnetic resonance imaging findings in myotonic dystrophy. *Arch Neurol*. 1988; 45(1):36–37. [PubMed: 3337674]
21. Huber SJ, Kissel JT, Shuttleworth EC, Chakeres DW, Clapp LE, Brogan MA. Magnetic resonance imaging and clinical correlates of intellectual impairment in myotonic dystrophy. *Arch Neurol*. 1989; 46(5):536–540. [PubMed: 2636847]
22. Kornblum C, Reul J, Kress W, Grothe C, Amanatidis N, Klockgether T, et al. Cranial magnetic resonance imaging in genetically proven myotonic dystrophy type 1 and 2. *Journal of neurology*. 2004; 251(6):710–714. [PubMed: 15311347]
23. Ota M, Sato N, Ohya Y, Aoki Y, Mizukami K, Mori T, et al. Relationship between diffusion tensor imaging and brain morphology in patients with myotonic dystrophy. *Neurosci Lett*. 2006; 407(3): 234–239. [PubMed: 16978781]
24. Minnerop M, Weber B, Schoene-Bake JC, Roeske S, Mirbach S, Anspach C, et al. The brain in myotonic dystrophy 1 and 2: evidence for a predominant white matter disease. *Brain : a journal of neurology*. 2011; 134(Pt 12):3530–3546. [PubMed: 22131273]
25. Fukuda H, Horiguchi J, Ono C, Ohshita T, Takaba J, Ito K. Diffusion tensor imaging of cerebral white matter in patients with myotonic dystrophy. *Acta Radiol*. 2005; 46(1):104–109. [PubMed: 15841748]

26. Naka H, Imon Y, Ohshita T, Honjo K, Kitamura T, Mimori Y, et al. Magnetization transfer measurements of cerebral white matter in patients with myotonic dystrophy. *J Neurol Sci.* 2002; 193(2):111–116. [PubMed: 11790391]
27. Di Costanzo A, Di Salle F, Santoro L, Bonavita V, Tedeschi G. T2 relaxometry of brain in myotonic dystrophy. *Neuroradiology.* 2001; 43(3):198–204. [PubMed: 11305750]
28. Mathieu J, Boivin H, Meunier D, Gaudreault M, Begin P. Assessment of a disease-specific muscular impairment rating scale in myotonic dystrophy. *Neurology.* 2001; 56(3):336–340. [PubMed: 11171898]
29. Johns MW. A new method for measuring daytime sleepiness: the Epworth sleepiness scale. *Sleep.* 1991; 14(6):540–545. [PubMed: 1798888]
30. Holdnack, HA. Wechsler Test of Adult Reading: WTAR. San Antonio, TX: The Psychological Corporation; 2001.
31. Wechsler, D. Wechsler Adult Intelligence Scale-Third Edition. San Antonio: The Psychological Corporation; 1997.
32. Grooved Pegboard Test - Instruction/Owner's Manual. Lafayette, IN: Lafayette Instrument; 1989. Lafayette Instrument.
33. Heaton, RK.; Chelune, GJ.; Talley, JL.; Kay, GG.; Curtiss, G. Wisconsin Card Sorting Test Manual: Revised and Expanded. Odessa, FL: Psychological Assessment Resources, Inc.; 1993.
34. Delis, DC.; Kramer, JH.; Kaplan, E.; Ober, BA. California Verbal Learning Test - 2nd Edition (CVLT-II). San Antonio, TX: The Psychological Corporation; 2000.
35. Schoenberg MR, Scott JG, Duff K, Adams RL. Estimation of WAIS-III intelligence from combined performance and demographic variables: development of the OPIE-3. *Clin Neuropsychol.* 2002; 16(4):426–437. [PubMed: 12822052]
36. Yendiki A, Panneck P, Srinivasan P, Stevens A, Zollei L, Augustinack J, et al. Automated probabilistic reconstruction of white-matter pathways in health and disease using an atlas of the underlying anatomy. *Front Neuroinform.* 2011; 5:23. [PubMed: 22016733]
37. Bassar PJ, Mattiello J, LeBihan D. MR diffusion tensor spectroscopy and imaging. *Biophys J.* 1994; 66(1):259–267. [PubMed: 8130344]
38. Franc DT, Muetzel RL, Robinson PR, Rodriguez CP, Dalton JC, Naughton CE, et al. Cerebral and muscle MRI abnormalities in myotonic dystrophy. *Neuromuscular Disorders.* 2012
39. Wozniak JR, Mueller BA, Ward EE, Lim KO, Day JW. White matter abnormalities and neurocognitive correlates in children and adolescents with myotonic dystrophy type 1: A Diffusion Tensor Imaging study. *Neuromuscular Disorders.* 2011; 21(2):133–147.
40. Takaba J, Abe N, Fukuda H. Evaluation of brain in myotonic dystrophy using diffusion tensor MR imaging. *Nippon Hoshasen Gijutsu Gakkai Zasshi.* 2003; 59(7):831–838.
41. Wozniak JR, Mueller BA, Bell CJ, Muetzel RL, Lim KO, Day JW. Diffusion tensor imaging reveals widespread white matter abnormalities in children and adolescents with myotonic dystrophy type 1. *Journal of neurology.* 2013; 260(4):1122–1131. [PubMed: 23192171]
42. Gagnon C, Meola G, Hebert LJ, Puymirat J, Laberge L, Leone M. Report of the first Outcome Measures in Myotonic Dystrophy type 1 (OMMYD-1) international workshop: Clearwater, Florida, November 30, 2011. *Neuromuscular disorders : NMD.* 2013; 23(12):1056–1068. [PubMed: 24011704]
43. Woodward JB 3rd, Heaton RK, Simon DB, Ringel SP. Neuropsychological findings in myotonic dystrophy. *Journal of clinical neuropsychology.* 1982; 4(4):335–342. [PubMed: 7174839]
44. Ekstrom AB, Hakenas-Plate L, Tulinius M, Wentz E. Cognition and adaptive skills in myotonic dystrophy type 1: a study of 55 individuals with congenital and childhood forms. *Developmental Medicine and Child Neurology.* 2009; 51(12):982–990. [PubMed: 19459914]
45. Angeard N, Gargiulo M, Jacqueline A, Radvanyi H, Eymard B, Heron D. Cognitive profile in childhood myotonic dystrophy type 1: is there a global impairment? *Neuromuscular disorders : NMD.* 2007; 17(6):451–458. [PubMed: 17433680]
46. Di Costanzo A, Santoro L, de Cristofaro M, Manganelli F, Di Salle F, Tedeschi G. Familial aggregation of white matter lesions in myotonic dystrophy type 1. *Neuromuscular disorders : NMD.* 2008; 18(4):299–305. [PubMed: 18337099]

47. Kuo HC, Hsieh YC, Wang HM, Chuang WL, Huang CC. Correlation among subcortical white matter lesions, intelligence and CTG repeat expansion in classic myotonic dystrophy type 1. *Acta neurologica Scandinavica*. 2008; 117(2):101–107. [PubMed: 18184345]
48. Hermans MC, Merkies IS, Laberge L, Blom EW, Tennant A, Faber CG. Fatigue and daytime sleepiness scale in myotonic dystrophy type 1. *Muscle & nerve*. 2013; 47(1):89–95. [PubMed: 23042586]
49. Laberge L, Begin P, Montplaisir J, Mathieu J. Sleep complaints in patients with myotonic dystrophy. *Journal of sleep research*. 2004; 13(1):95–100. [PubMed: 14996041]
50. Beaulieu C. The basis of anisotropic water diffusion in the nervous system - a technical review. *NMR Biomed*. 2002; 15(7–8):435–455. [PubMed: 12489094]
51. Neil JJ, Miller J, Mukherjee P, Huppi PS. Diffusion tensor imaging of normal and injured developing human brain - a technical review. *NMR Biomed*. 2002; 15(7–8):543–552. [PubMed: 12489100]
52. Fox RJ, Cronin T, Lin J, Wang X, Sakaie K, Ontaneda D, et al. Measuring Myelin Repair and Axonal Loss with Diffusion Tensor Imaging. *AJNR American Journal of Neuroradiology*. 2010
53. Hernandez-Hernandez O, Guiraud-Dogan C, Sicot G, Huguet A, Luilier S, Steidl E, et al. Myotonic dystrophy CTG expansion affects synaptic vesicle proteins, neurotransmission and mouse behaviour. *Brain : a journal of neurology*. 2013; 136(Pt 3):957–970. [PubMed: 23404338]

Highlights

- DTI tractography reveals white matter disturbance in all tracts examined in DM1
- These brain disturbances are associated with the level of muscle impairment
- The abnormalities are also associated with working memory and cognitive speed deficits
- Sleepiness was associated with white matter status in two white matter tracts

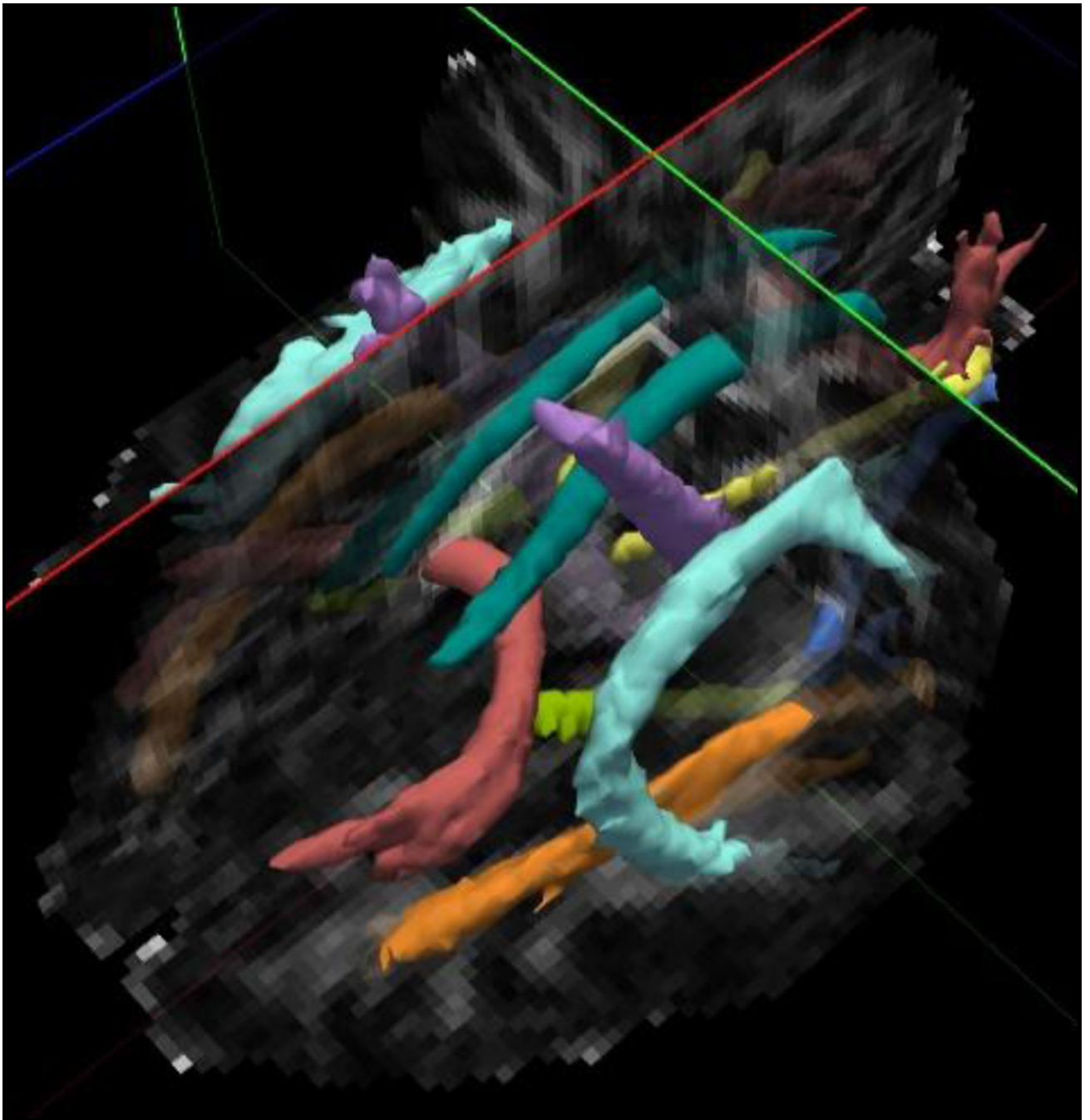


Figure 1. Illustration of white matter tracts from TRACULA (purple = corticospinal tract; red = forceps major & forceps minor; teal= cingulum bundle {cingulum gyrus component}; light green = cingulum bundle {angular gyrus component}; light blue = superior longitudinal fasciculus {temporal component}; orange = inferior longitudinal fasciculus; medium blue = uncinated fasciculus; yellow = thalamic radiations {not examined}).

Table 1

Demographic characteristics of included participants.

N(%) or mean \pm SD	Myotonic Dystrophy (n =45)	Control (n =46)	Statistical Test
<i>Age at MRI scan</i>	38.4 \pm 6.6 yrs.	38.5 \pm 7.2 yrs.	t(1,89) =.024, p=.981
<i>Gender</i>			
Male	21 (47%)	18 (39%)	
Female	24 (53%)	28 (61%)	χ^2 =.528, p=.468
<i>Handedness</i>			
Right	41(91%)	45(98%)	χ^2 =1.98, p=.174
<i>CTG Repeats</i>	387 \pm 208	--	--
<i>Muscular Impairment Rating Scale (MIRS)</i>	3.15 \pm .96	--	--
<i>Epworth Sleepiness Scale</i>	7.44 \pm 3.3	--	--
<i>Years of Education</i>	14.0 \pm 2.0 yrs.	16.1 \pm 1.5 yrs.	t(1,65)=4.77, p<.001
<i>Intellectual Functioning</i>			
WAIS-III Vocabulary Score	10.8 \pm 2.8	11.9 \pm 2.5	t(1,88)=1.99, p=.050
WAIS-III Matrix Reasoning Score	11.6 \pm 3.3	12.2 \pm 2.6	t(1,88)=0.87, p=.387
Estimated IQ (WTAR)	101 \pm 14.3	110 \pm 11.1	t(1,88)=3.31, p=.001
Estimated IQ (OPIE-3)	108 \pm 12.1	114 \pm 8.2	t(1,88)=2.41, p=.018

NOTE: WTAR = Wechsler Test of Adult Reading (a proxy measure of IQ); OPIE-3 Oklahoma Premorbid Intelligence Estimate - 3

Table 2

MRI sequence and parameters.

Sequence	Imaging Parameters	Purpose	Time
Scout	3 plane localizer	Positioning	1 min
T1-weighted MPRAGE	TR=2350ms, TE=3.65ms, TI=1100ms, 240 slices, voxel size=1×1×1mm, FOV=256mm, flip angle=7 degrees.	Segmentation & cortical parcellation	11 min
Diffusion weighted (DTI)	TR=8500ms, TE=90ms, 64 slices, voxel size=2×2×2mm, FOV=256mm, GRAPPA 2, 30 volumes with b=1000 s/mm ² & 6 with b=0 s/mm ² , 2 averages (72 volumes).	Computation of the diffusion tensor	11 min
DTI Field-map	Positioned to match DTI, 64 slices, voxel size=2×2×2mm, FOV=256mm TR=700ms, TE=4.62ms / 7.08ms, flip angle=90 deg.	Correction of geometric distortions for DTI	3 min

Table 3

Comparison of patients with myotonic dystrophy type 1 and control participants on neuropsychological tests.

Measure	Control Mean (SD)	Myotonic Dystrophy Mean (SD)	Significance (p)
Wechsler Working Memory	105.7 (11.1)	97.3 (12.1)	<.001
Wechsler Processing Speed	109.7 (11.2)	95.1 (12.1)	<.001
California Verbal Learning Test (total)	52.9 (10.3)	49.8 (8.7)	.126
Wisconsin Card Sorting Test (total errors)	91.6 (23.0)	95.7 (19.2)	.464
D-KEFS Trailmaking (letter-number switching)	11.4 (2.2)	8.9 (3.3)	<.001
D-KEFS Tower Test	10.9 (2.4)	10.7 (2.8)	.648
D-KEFS Verbal Fluency (category switching)	9.7 (3.4)	11.5 (3.4)	.010
Grooved Pegboard (dominant hand)	-2.9 (3.9)	-0.1 (1.1)	<.001
Grooved Pegboard (non-dominant hand)	-2.3 (2.9)	-0.1 (0.9)	<.001

Note: SD = Standard Deviation. D-KEFS = Delis-Kaplan Executive Functioning System

Table 4

Comparison of patients with myotonic dystrophy type 1 and control participants on measures of fractional anisotropy (FA) and mean diffusivity (MDiff) in white matter tracts.

	Control (n =46)		Myotonic Dystrophy (n =45)		Statistical tests		Effect size (Cohen's d)
	Mean	SD	Mean	SD	t	p	
<i>Fractional Anisotropy (FA)</i>							
Corticospinal tract	.497	.024	.486	.025	2.15	.034	.45
Inferior Longitudinal Fasciculus (ILF)	.501	.024	.429	.041	10.27	<.001	2.14
Superior Longitudinal Fasciculus (SLF)	.446	.022	.394	.034	12.32	<.001	1.82
Cingulum	.454	.028	.386	.040	13.44	<.001	1.97
Uncinate Fasciculus	.421	.023	.360	.034	10.12	<.001	2.10
Forceps Major	.613	.024	.558	.041	7.72	<.001	1.63
Forceps Minor	.524	.030	.453	.052	8.11	<.001	1.67
<i>Mean Diffusivity (MDiff)</i>							
Corticospinal tract	.747	.017	.795	.028	10.04	<.001	2.07
Inferior Longitudinal Fasciculus (ILF)	.812	.022	.928	.060	12.33	<.001	2.57
Superior Longitudinal Fasciculus (SLF)	.740	.020	.841	.053	16.94	<.001	2.52
Cingulum	.784	.025	.874	.051	15.29	<.001	2.24
Uncinate Fasciculus	.809	.022	.924	.059	12.56	<.001	2.58
Forceps Major	.830	.027	.896	.051	7.74	<.001	1.61
Forceps Minor	.796	.026	.905	.063	10.93	<.001	2.26

Note: Mean Diffusivity values are $\times 10^{-6}$ mm² / second; Mean values represent the average of the right and left tracts; Superior Longitudinal Fasciculus values represent the average of parietal and temporal components; Cingulum values represent the average of supracallosal and infracallosal components.

* indicates significant difference after Bonferroni correction (p<.0035).

Table 5

Correlations between white matter tract mean diffusivity (MDiff) and measures of cognitive performance in participants with DM1.

	Wechsler WMI	Wechsler PSI	D-KEFS Fluency Category Switching	Grooved Pegboard
Corticospinal tract	$r=-.585, p<.001^*$	$r=-.596, p<.001^*$	$r=-.045, p=.771$	$r=-.274, p=.072$
Inferior Longitudinal Fasciculus (ILF)	$r=-.484, p<.001^*$	$r=-.435, p=.003$	$r=-.170, p=.269$	$r=-.413, p=.005$
Superior Longitudinal Fasciculus (SLF)	$r=-.509, p<.001^*$	$r=-.474, p=.001^*$	$r=-.132, p=.392$	$r=-.297, p=.050$
Cingulum	$r=-.545, p<.001^*$	$r=-.528, p<.001^*$	$r=-.188, p=.222$	$r=-.366, p=.015$
Uncinate Fasciculus	$r=-.571, p<.001^*$	$r=-.480, p<.001^*$	$r=-.147, p=.342$	$r=-.350, p=.020$
Forceps Major	$r=-.431, p<.001$	$r=-.385, p=.009$	$r=-.064, p=.679$	$r=-.179, p=.245$
Forceps Minor	$r=-.586, p<.001^*$	$r=-.438, p=.003$	$r=-.038, p=.806$	$r=-.339, p=.025$

NOTE:

* significant correlation after Bonferroni correction ($p<.0018$);

WMI = Working Memory index; PSI = Processing Speed Index; D-KEFS = Delis-Kaplan Executive Functioning System.

Table 6

Correlations between white matter tract mean diffusivity (MDiff) and clinical measures in participants with DM1

	CTG Repeats	MIRS	Sleepiness Scale
Corticospinal tract	$r=.417, p<.003^*$	$r=.420, p<.001^*$	$r=.221, p=.069$
Inferior Longitudinal Fasciculus (ILF)	$r=.154, p=.284$	$r=.556, p<.001^*$	$r=.250, p=.040$
Superior Longitudinal Fasciculus (SLF)	$r=.088, p=.381$	$r=.504, p<.001^*$	$r=.242, p=.005^*$
Cingulum	$r=.407, p<.001^*$	$r=.473, p<.001^*$	$r=.266, p=.002^*$
Uncinate Fasciculus	$r=.291, p=.040$	$r=.555, p<.001^*$	$r=.241, p=.047$
Forceps Major	$r=-.084, p=.689$	$r=.345, p=.046$	$r=.204, p=.246$
Forceps Minor	$r=.126, p=.549$	$r=.573, p<.001^*$	$r=.325, p=.060$

NOTE:

* significant correlation after Bonferroni correction ($p<.007$);

MIRS = Muscular Impairment Rating Scale