

ORIGINAL ARTICLE

Open Access

# Family 1 carbohydrate binding-modules enhance saccharification rates

Bruno Luan Mello and Igor Polikarpov\*

## Abstract

Cellulose degrading enzymes usually have a two-domain structure consisting of a catalytic domain and a non-catalytic carbohydrate-binding module. Although it is well known the importance of those modules in cell wall degrading process, their function is not yet fully understood. Here, we analyze the cellulose-hydrolysis activity enhancement promoted by the cellobiohydrolase I carbohydrate-binding module from *Trichoderma harzianum*. It was cloned, expressed, purified and used in combination with either a commercial cellulase preparation, *T. reesei* cellobiohydrolase I or its separate catalytic domain to hydrolyze filter paper. In all cases the amount of glucose released was increased, reaching up to 30% gain when the carbohydrate-binding module was added to the reaction. We also show that this effect seems to be mediated by a decrease in the recalcitrance of the cellulosic substrate. This effect was observed both for crystalline cellulose samples which underwent incubation with the CBM *prior* to application of cellulases and for the ones incubated simultaneously. Our studies demonstrate that family 1 carbohydrate-binding modules are able to potentiate the enzymatic degradation of the polysaccharides and their application might contribute to diminishing the currently prohibitive costs of the lignocellulose saccharification process.

**Keywords:** Carbohydrate binding-module; Cellulose binding-domain; Enzymatic hydrolysis; Cellulosic ethanol; Amorphogenesis

## Introduction

Plant cell walls are complex structures, which the main component is cellulose, a linear homopolymer of thousands of glucose residues linked by  $\beta$ -1,4-glycosidic bonds. In plant cell walls, cellulose is found as fibers composed of many chains that pack together by regular H-bonding networks in a crystalline structure, though imperfections and amorphous regions are also observed (Hon 1994; Knox 2008). In higher plants, these fibers are encapsulated by hemicellulose and lignin in a structure called lignocellulose (Atalla 1987).

The enzymatic hydrolysis of cellulose into glucose requires the synergistic action of a set of cellulases traditionally grouped as endoglucanases (EC 3.2.1.4), exoglucanases (EC 3.2.1.91 and 3.2.1.176) and  $\beta$ -glucosidases (EC 3.2.1.21) (Lynd et al. 2002; Saharay et al. 2010; Smith et al. 2012). The glucose released can be then fermented to ethanol by

available technologies. Hence, biomass-derived cellulose is a promising feedstock for the production of a second-generation biofuel with little contribution to global warming.

Cellulases from aerobic organisms generally have a two-domain structure consisting of a catalytic domain (CD) and a carbohydrate-binding module (CBM) (Tomme et al. 1988). CBMs are classified into families based on amino acid sequence similarity and the majority of the fungal cellulases CBMs belong to family 1 (CAZy; Cantarel et al. 2009). It is well known that the CBMs act targeting the CDs to the insoluble substrate and increasing the cellulases local concentration (Reinikainen et al. 1992; Bolam et al. 1998; Carrard et al. 2000). As a consequence, removal of the CBMs reduces dramatically the activity of cellulases toward insoluble substrates even though the activity remains largely unchanged for the soluble ones (Irwin et al. 1993; Mansfield et al. 1999; Colussi et al. 2011). Although in the eighties it was already speculated that CBMs could potentiate polysaccharide deconstruction (Knowles et al. 1987), the molecular mechanism of such phenomenon is still not clear.

\* Correspondence: ipolikarpov@ifsc.usp.br

Grupo de Biotecnologia Molecular, Instituto de Física de São Carlos, Universidade de São Paulo. Av. Trabalhador Sancarlene, 400, São Carlos, SP CEP 13560-970, Brazil

While growing body of evidence shows that CBMs from the family 1 might have a disruptive function (Din et al. 1991; Gao et al. 2001; Xiao et al. 2001; Pinto et al. 2004; Wang et al. 2008; Hall et al. 2011) and act to enhance cellulase activity (Gao et al. 2001; Lemos et al. 2003; Moser et al. 2008; Hall et al. 2011), this effect is frequently not taken into account (Herve et al. 2010; Varnai et al. 2013). The elucidation of molecular mode of CBM action is of both scientific and technological importance, since its understanding may lead to a decrease in the cellulase loads used in the paper, textile and bioethanol industries.

Here, we report the use of a family 1 CBM to increase the saccharification of a model cellulosic substrate. To achieve this goal, the CBHI CBM from *T. harzianum* (CBM<sub>CBHI</sub>) was cloned and expressed in *Escherichia coli* fused to a small ubiquitin-like modifier (SUMO). The CBM<sub>CBHI</sub> was then released from the CBM-SUMO fusion protein by limited proteolysis and purified by size-exclusion chromatography. A commercial cellulase cocktail, the CBHI from *Trichoderma reesei* (TrCBHI) and the CBHI CD from *T. reesei* (CD<sub>CBHI</sub>) were then supplemented with the purified CBM and the activity enhancement on the filter paper hydrolysis was analyzed.

## Material and methods

### Cloning of CBM<sub>CBHI</sub>

Standard molecular biology techniques were used as described elsewhere (Michael and Joseph 2012). A plasmid cloned previously by our group with the gene for cellobiohydrolase I from *Trichoderma harzianum* [GenBank: AF223252.1] (Bogo et al. 2010) was used to amplify the CBM<sub>CBHI</sub> sequence by polymerase chain reaction (PCR) with specific oligonucleotides. The forward primer added LVPRGS thrombin cleavage site to the N-terminal of the CBM<sub>CBHI</sub> sequence. The forward primer 5'- AAGCTT TACTGGTGCCACGCGTTCTACACACTACGGCC AG-3' and reverse primer 5'- CGCGGAACCAGCTC GAGTCATTACAGGCACTGAGAGTAGAATG-3' contained cut sites for *Hind*III and *Xho*I respectively. The PCR product was purified from a 1% agarose gel using the Promega Wizard SV gel purification kit (Promega, Fitchburg, USA). Then, it was cloned into the linear pGEM-T vector (Promega) and transformed into *Escherichia coli* DH5 $\alpha$  chemical competent cells. Transformants carrying the CBM<sub>CBHI</sub> gene were identified by ampicillin resistance and  $\beta$ -galactosidase blue/white screening. pGEM-T + CBM was isolated using Promega Wizard Plus SV miniprep DNA purification system. The recombinant plasmid and pSMT3 expression vector, which encodes a 6His-SUMO N-terminal tag (Mossesso and Lima 2000), were digested with *Hind*III and *Xho*I. The digested fragments were purified from 1% agarose gel as above, ligated using Promega T4 DNA ligase and transformed into *E. coli*

DH5 $\alpha$ . pSMT3 + CBM was extracted from single colonies that could grow in presence of kanamycin 50  $\mu$ g/mL, sequenced to be sure there were no unwanted mutations and used to transform *E. coli* Rosetta (DE3) strain. Colonies that could grow in presence of kanamycin 50  $\mu$ g/mL and chloramphenicol 34  $\mu$ g/mL were tested for protein production on a small scale. Cells that could overexpress the CBM-SUMO fusion protein were frozen away at -80°C with 20% glycerol.

### CBM<sub>CBHI</sub> expression and purification

50 mL cultures of *E. coli* carrying the CBM-SUMO gene were grown overnight on 2XYT medium in presence of kanamycin (50  $\mu$ g/mL) and chloramphenicol (34  $\mu$ g/mL) at 37°C and used to inoculate 1 L of the same medium. The cultures were grown under constant shaking at 37°C until the optical density at 600 nm reached 0.8. Expression was induced by addition of 1 mM IPTG and carried out for 4 hours. The cells were harvested by spinning down the cultures at 14,000 g for 15 minutes. Next they were suspended in 20 mL of lysis buffer containing 20 mM Tris-HCl, 300 mM NaCl, 5 mM imidazole, 1 mM dithiothreitol (DTT), 1 mM phenylmethylsulfonyl fluoride (PMSF), pH 8.0. Finally, the cell suspension was freeze-thawed, sonicated for 6 minutes and centrifuged at 34,000 g for 30 minutes. The supernatant was loaded on a column with 2 mL of nickel-nitrilotriacetic acid (Ni-NTA) resin (Qiagen, Crawley, UK) previously equilibrated with 10 volumes of lysis buffer. The column was washed with 4 volumes of wash buffer (20 mM Tris-HCl, 1 M NaCl, 5 mM imidazole, 5% (v/v) glycerol, pH 8.0) and the recombinant protein was eluted with 4 volumes of elution buffer (20 mM Tris-HCl, 100 mM NaCl, 300 mM imidazole, 5% (v/v) glycerol, 1 mM DTT, pH 8.0). The CBM-SUMO was further purified using Superdex™ 75 16/60 (GE Healthcare Biosciences Corporation, Piscataway, USA) column previously equilibrated with 20 mM Tris-HCl, 150 mM NaCl, pH 8.0. The sample purity was determined by sodium dodecyl sulphate-polyacrylamide gel electrophoresis (SDS-PAGE) and Coomassie blue staining.

The CBM<sub>CBHI</sub> was obtained cleaving the fusion protein with 1 U/mg of thrombin at 18°C overnight. It was purified by size-exclusion chromatography as described above.

### Activity assays

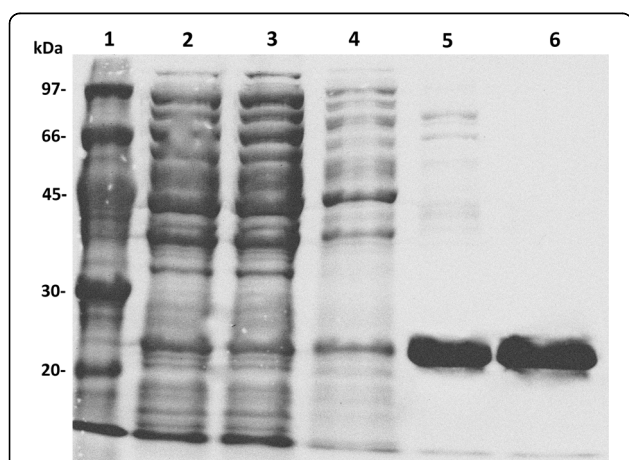
The cellulosic substrate Whatman filter paper No. 1 was purchased from Sigma-Aldrich (St. Louis, USA). The TrCBHI, CD<sub>CBHI</sub> and Accellerase® 1500 (Genencore, Rochester, USA) cellulase preparation were used for hydrolysis. Production and purification of native TrCBHI and its CD<sub>CBHI</sub> was done following the same protocols used for the homologous protein from *T. harzianum* (Colussi et al. 2010). Hydrolysis was carried out in PCR

plates and 3 mg filter paper discs were used as substrate. To each well 50  $\mu$ L of CBM-SUMO or CBM<sub>CBHI</sub> in 50 mM citrate buffer (pH 5.0) was added. The buffer alone and SUMO in 50 mM citrate buffer (pH 5.0) were used as negative controls. The reaction was started by adding 20  $\mu$ L of Accellerase<sup>®</sup> 1500, CD<sub>CBHI</sub> or TrCBHI properly diluted in the same buffer. Reactions were performed in quadruplicate at 50°C. The amount of soluble reducing sugar released by the enzymes was calculated with the dinitrosalicylic acid (DNS) assay (Ghose 1987) using glucose as a standard. Buffer, protein and substrate blanks were measured for every assay and were subtracted from the experimental data.

## Results

### CBM<sub>CBHI</sub> expression and purification

The CBM<sub>CBHI</sub> gene was overexpressed in *E. coli* fused to a 6His-SUMO tag. The tag allowed expression, purification and easier concentration of the protein, as the CBM<sub>CBHI</sub> has a molecular weight (MW) of only 3.8 kDa and the CBM-SUMO MW is 19.2 kDa. More than 40 mg of the recombinant protein construct was obtained per liter of culture. We also tried to clone and express the CBM<sub>CBHI</sub> alone, but no expression was detected, probably because small proteins are quickly degraded inside the cell (Cheng and Patel 2004). Figure 1 shows results of the CBM-SUMO purification steps. After Ni-NTA affinity chromatography the sample was loaded on a gel-filtration column to purify it from high MW contaminants and also from low MW contaminants that were released with the cell lysis but could not be visualized by SDS-PAGE. The fusion protein was then



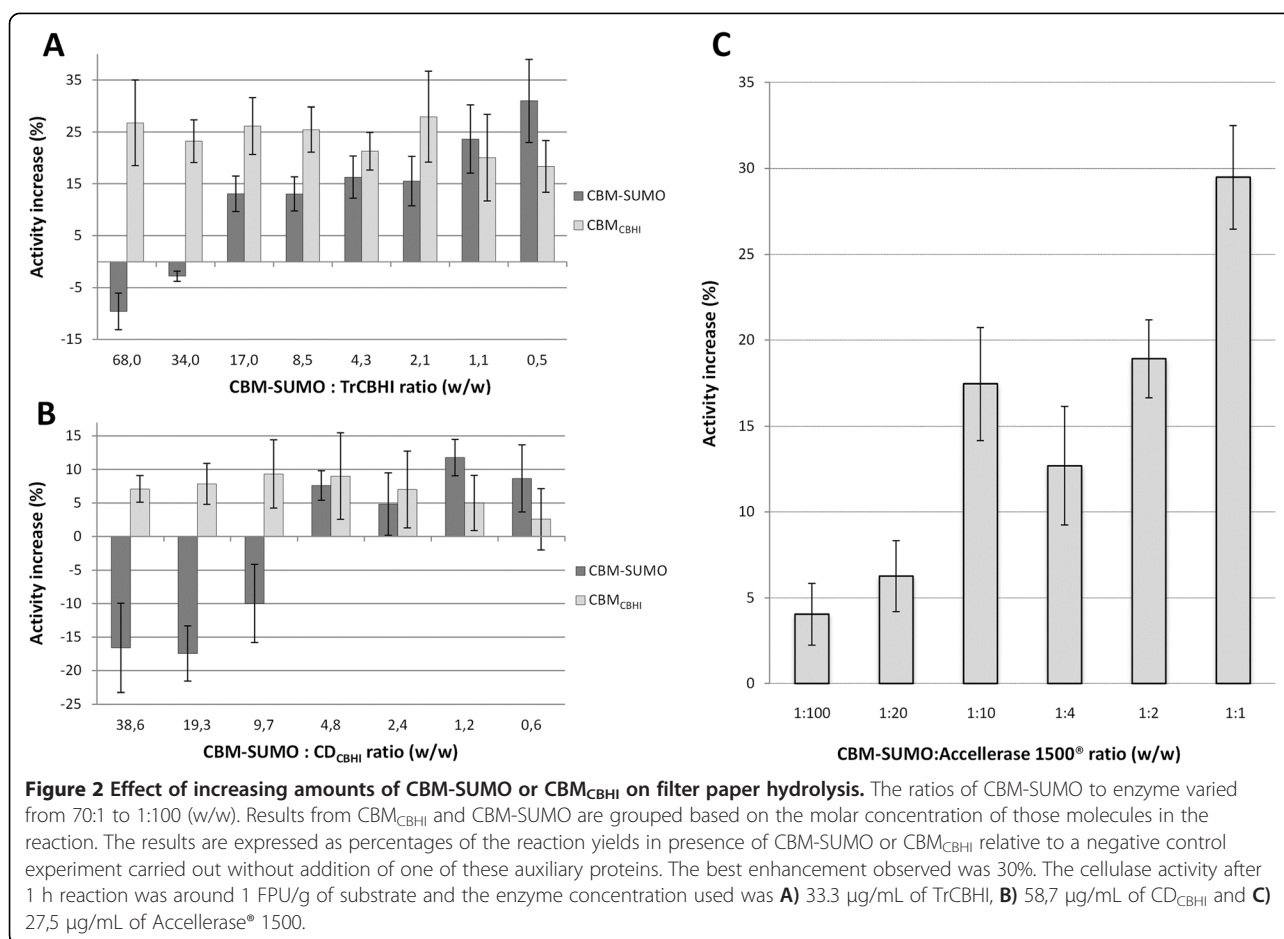
**Figure 1** Expression and purification of CBM-SUMO expressed in *E. coli* Rosetta (DE3). Lane 1, molecular weight standard; lane 2, lysate soluble fraction from *E. coli* induced with IPTG; lane 3, proteins that did not bind to Ni-NTA resin; lane 4, proteins eluted from Ni-NTA resin with wash buffer; lane 5, protein eluted from Ni-NTA resin with 300 mM imidazole; lane 6, pure CBM-SUMO eluted from size-exclusion chromatography.

cleaved by thrombin and the released CBM<sub>CBHI</sub> was purified by gel-filtration chromatography. CBM<sub>CBHI</sub> elution was monitored by absorbance at 280 nm, but it could not be visualized by SDS-PAGE due to its low MW.

### Hydrolysis reactions

We first incubated different ratios (w/w) of CBM-SUMO or CBM<sub>CBHI</sub> with TrCBHI or CD<sub>CBHI</sub> for 1 h and calculated the overall cellulase activity. A clear increase in the rate of filter paper hydrolysis was observed either when TrCBHI was supplemented with CBM<sub>CBHI</sub> or its SUMO-fusion construct (CBM-SUMO). The boost in TrCBHI cellulase activity was approximately constant and close to 25% (within the experimental errors), no matter what ratios of CBM<sub>CBHI</sub> to TrCBHI were applied (within 70:1 to 1:2 range of CBM-SUMO:TrCBHI w/w ratios and CBM<sub>CBHI</sub> at the same molar concentration of CBM-SUMO; Figure 2A). On the contrary, CBM-SUMO effect over TrCBHI activity was negative at very high excess of CBM-SUMO over TrCBHI (-10% at 70:1 w/w ratio, Figure 2A). At smaller CBM-SUMO doses, its addition had positive synergy with the TrCBHI in filter paper hydrolysis, reaching about 30% at 1:2 CBM-SUMO:TrCBHI (w/w) ratio. The TrCBHI activity improvement promoted by CBM-SUMO and CBM<sub>CBHI</sub> is about the same when the ratio (w/w) of CBM-SUMO:enzyme was 5:1 or less (Figure 2A). Notably, smaller enhancement effect and larger negative contributions at high CBM-SUMO doses were observed when CD<sub>CBHI</sub> was used in the assays (Figure 2B).

To analyze the influence of the CBM<sub>CBHI</sub> addition on the activity of commercial enzymatic preparation, we tested its synergy with the Accellerase<sup>®</sup> 1500. Thus, we incubated different ratios of CBM-SUMO to Accellerase<sup>®</sup> 1500 for 1 h and calculated the increase in cellulase activity. CBM-SUMO was used in place of CBM<sub>CBHI</sub> because the previous experiment showed that the cellulase activity improvement of the former construct was the same or higher for ratios (w/w) 5:1 or less of CBM:enzyme. As shown in Figure 2C, there was a steady activity improvement reaching values as high as 30% when a ratio of 1:1 (w/w, CBM-SUMO:enzyme) was used. No reducing sugar could be detected when only CBM-SUMO was incubated with the substrate. We observed an enhancement of about 5% even when the ratio was as small as 1:100. To test a substrate memory effect we compared direct addition of CBM-SUMO to the enzymatic preparation with the pretreatment of the filter paper with CBM-SUMO prior to the enzymatic hydrolysis reaction. We observed the same improvement in both cases. No improvement in the enzymatic preparation activity was detected upon addition of CBM-SUMO when the soluble carboxymethyl cellulose was used as substrate.



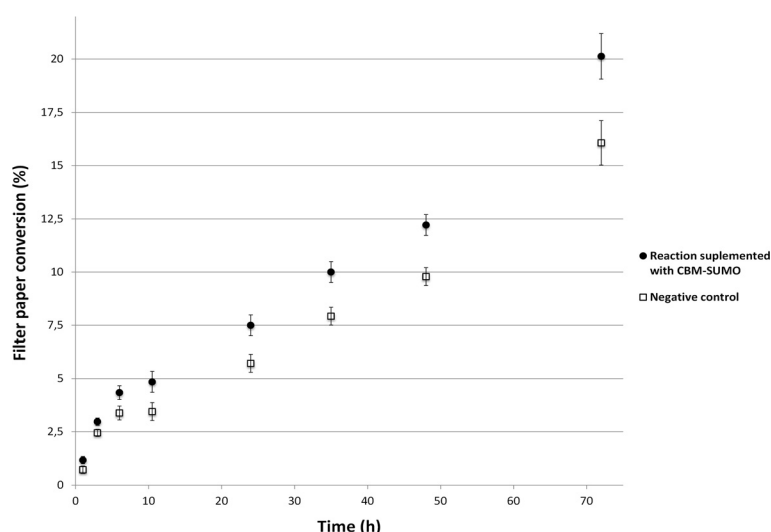
The best ratio of CBM-SUMO to enzymatic preparation (1:1, on w/w basis) was then used to monitor the hydrolysis of filter paper over time. Surprisingly, the saccharification improvement was about 30% and this gain was constant over time (Figure 3).

## Discussion

Currently, the main function of CBMs is considered to be to target the CDs to the insoluble substrate, thus increasing the effective cellulase concentration on the polysaccharide surface (Reinikainen et al. 1992; Bolam et al. 1998; Carrard et al. 2000). However, there is a growing body of evidence showing that CBMs from bacterial (Din et al. 1991; Moser et al. 2008) and fungal cellulases (Gao et al. 2001; Xiao et al. 2001; Lemos et al. 2003; Pinto et al. 2004; Wang et al. 2008; Hall et al. 2011) act in the amorphogenesis of cellulose. On the other hand, several studies reported that CBMs have no disruptive activity (Gill et al. 1999; Carrard et al. 2000; Saloheimo et al. 2002) or do not increase the saccharification rates if incubated simultaneously with a cellulase cocktail (Hall et al. 2011). To address this contradictory evidence we set out to study the effect of addition of CBMs on the filter paper hydrolysis

by the well-studied TrCBHI, its catalytic domain and a commercial cellulase cocktail.

When the ratios (w/w) of CBM<sub>CBHI</sub> or CBM-SUMO to TrCBHI was 5:1 or less the observed increase in the activity was the same within the experimental errors. This can be explained by the fact that the SUMO does not interact with cellulose, what was confirmed by the negative controls (results not shown). This might be relevant for application point of view because it is easier and cheaper to produce CBM-SUMO than CBM<sub>CBHI</sub> as the production of the former construct does not involve partial digestion and further purification steps. When the ratio between CBM to TrCBHI was 10:1 or higher the overall cellulase activity decreases for reactions in presence of CBM-SUMO but not for the ones in presence of CBM<sub>CBHI</sub>. As the activity did not decrease when CBM<sub>CBHI</sub> was added at the same molar concentration, it probably means that the cellulose binding sites were not saturated. However, the SUMO domain of the CBM-SUMO fusion protein is about 4 times bigger than the CBM<sub>CBHI</sub>. Therefore, the CBM-SUMO might lead to a steric hindrance at the cellulose accessible surface before the binding sites saturation was observed. As a



**Figure 3 Hydrolysis profile of filter paper in presence and absence of CBM-SUMO.** The recombinant protein produced an increase in sugar release of about 30% during all the monitored reaction time. Both CBM-SUMO and Accellerase® 1500 concentrations were 27,5  $\mu\text{g}/\text{mL}$ .

consequence, the steric exclusion effect hampered the approximation of TrCBHI to cellulose, thus decreasing the observed activity. This result agrees with the negatively cooperative adsorption of CBHI CBM from *T. reesei* fused to a red-fluorescent protein observed by Sugimoto et al. (2012). The effect observed when  $\text{CD}_{\text{CBHI}}$  was used in place of TrCBHI was similar. However, the CBM-SUMO hindrance was stronger and activity-boosting effect was weaker for both CBM-SUMO and  $\text{CBM}_{\text{CBHI}}$  reaching 12% or less.

When CBM-SUMO was incubated with a commercial cellulase preparation, our results clearly show that it does enhance cellulase activity, particularly at low cellulase loadings (about 1 FPU/g of substrate). It is important to mention that although the loading at which considerable enhancement of cellulose hydrolysis was detected is not very high, it is close to or within the range of the loadings currently used for cellulosic biomass deconstruction in cellulosic bioethanol production studies (3 to 15 FPU/g of substrate range) (Taherzadeh and Karimi 2007). With that in mind, how can we explain that in previous studies no improvement in cellulose hydrolysis was detected when the CBM incubation was simultaneous (Hall et al. 2011)? One possible explanation is that the authors used a higher cellulase loading. Indeed, our experiments clearly show that the CBM-promoted enhancement of cellulosic activities of the commercial enzymatic preparation is dose-dependent. We could not detect significant activity improvements at cellulase loadings of 2 FPU/g of substrate or higher.

What is the molecular basis for such enhancement of cellulase activity? The observed enhancement might be result of hydrogen bond disruption between cellulose chains, rendering the substrate less recalcitrant for

hydrolysis as has already been demonstrated for other CBMs (Gao et al. 2001; Xiao et al. 2001; Pinto et al. 2004; Wang et al. 2008). Our experimental evidence of the boost in enzymatic hydrolysis yields for the crystalline cellulosic substrate which underwent incubation with CBM *prior* to application of cellulases clearly indicate that the synergistic effect between the CBMs and the cellulases should be mediated by the decrease in recalcitrance of the substrate.

Although many more studies are needed to understand in detail the substrate modifications promoted by CBMs, the fact that they can enhance cellulose hydrolysis yields at low cellulase loadings, is clearly very important for development of cost-effective processes of cellulose saccharification, which is one of the major bottlenecks for cellulosic bioethanol production.

Our study demonstrates that incubation of recombinant  $\text{CBM}_{\text{CBHI}}$  (or its fusion construct with SUMO protein) with a cellobiohydrolase, its catalytic domain or a cellulase commercial preparation has a significant impact on cellulose saccharification when the cellulase activity is in the range of 1 FPU/g of substrate. The boost is up to 30% in glucose yield during filter paper hydrolysis. Thus, family 1 CBM addition to cellulase preparations might provide an alternative method to reduce the amount of enzymes needed to deconstruct cellulosic biomass, which might have direct impacts on the paper, textile and bioethanol industries.

#### Competing interest

The authors declare that they have no competing interest.

#### Acknowledgments

The authors are grateful to FAPESP and CNPq for the financial support for this work via grants # 2009/05349-6, 2008/56255-9 and 2010/52362-5 (FAPESP) and grant # 490022/2009-0 (CNPq).

Received: 24 January 2014 Accepted: 16 March 2014

Published online: 25 April 2014

## References

- Atalla RH (1987) The structures of cellulose. ACS Symposium Series, Washington
- Bogo E, Pellegrini VOA, Malago WJ, Silva FH, Polikarpov I (2010) Expression of three novel cellulases from *T. harzianum* in *Pichia pastoris* to obtain its 3D structure and innovative enzymatic activity. In: Abstracts of the III Congresso Brasileiro de Biotecnologia, Fortaleza, Ceará, 12-15 October 2010
- Bolam DN, Ciruela A, McQueen-Mason S, Simpson P, Williamson MP, Rixon JE, Boraston A, Hazlewood GP, Gilbert HJ (1998) *Pseudomonas* cellulose-binding domains mediate their effects by increasing enzyme substrate proximity. *Bioch J* 331:775–781
- Cantarel BL, Coutinho PM, Rancurel C, Bernard T, Lombard V, Henrissat B (2009) The Carbohydrate-Active EnZymes database (CAZy): an expert resource for Glycogenomics. *Nucleic Acids Res* 37:D233–D238. doi:10.1093/nar/gkn663
- Carrard G, Koivula A, Soderlund H, Beguin P (2000) Cellulose-binding domains promote hydrolysis of different sites on crystalline cellulose. *Proc Natl Acad Sci USA* 97(19):10342–10347. doi: 10.1073/pnas.160216697
- CAZy (Carbohydrate Active Enzymes database) (2013). <http://www.cazy.org/>. Accessed on 26 October 2013
- Cheng Y, Patel DJ (2004) An efficient system for small protein expression and refolding. *Bioch Biophys Res Commun* 317(2):401–405. doi:10.1016/j.bbrc.2004.03.068
- Colussi F, Textor LC, Serpa V, Maeda RN, Pereira N, Polikarpov I (2010) Purification, crystallization and preliminary crystallographic analysis of the catalytic domain of the extracellular cellulase CBH1 from *Trichoderma harzianum*. *Acta Crystallogr Sect F Struct Biol Cryst Commun* 66:1041–1044. doi:10.1107/s1744309110026886
- Colussi F, Serpa V, Delabona PS, Manzine LR, Voltatodio ML, Alves R, Mello BL, Pereira N, Farinas CS, Golubev AM, Santos MAM, Polikarpov I (2011) Purification, and biochemical and biophysical characterization of cellobiohydrolase I from *Trichoderma harzianum* IOC 3844. *J Microbiol Biotechnol* 21(8):808–817. doi:10.4014/jmb.1010.10037
- Din N, Gilkes NR, Tekant B, Miller RC, Warren AJ, Kilburn DG (1991) Non-hydrolytic disruption of cellulose fibers by the binding domain of a bacterial cellulase. *Nat Biotechnol* 9(11):1096–1099. doi:10.1038/nbt1191-1096
- Gao PJ, Chen GJ, Wang TH, Zhang YS, Liu J (2001) Non-hydrolytic disruption of crystalline structure of cellulose by cellulose binding domain and linker sequence of cellobiohydrolase I from *Penicillium janthinellum*. *Acta Biochim et Biophys Sinica* 33(1):13–18
- Ghose TK (1987) Measurement of cellulase activities. *Pure Appl Chem* 59(2):257–268. doi:10.1351/pac198759020257
- Gill J, Rixon JE, Bolam DN, McQueen-Mason S, Simpson PJ, Williamson MP, Hazlewood GP, Gilbert HJ (1999) The type II and X cellulose-binding domains of *Pseudomonas* xylanase A potentiate catalytic activity against complex substrates by a common mechanism. *Biochem J* 342:473–480. doi:10.1042/0264-6021:3420473
- Hall M, Bansal P, Lee JH, Realf MJ, Bommaris AS (2011) Biological pretreatment of cellulose: Enhancing enzymatic hydrolysis rate using cellulose-binding domains from cellulases. *Bioresour Technol* 102(3):2910–2915. doi:10.1016/j.biortech.2010.11.010
- Herve C, Rogowski A, Blake AW, Marcus SE, Gilbert HJ, Knox JP (2010) Carbohydrate-binding modules promote the enzymatic deconstruction of intact plant cell walls by targeting and proximity effects. *Proc Natl Acad Sci USA* 107(34):15293–15298. doi:10.1073/pnas.1005732107
- Hon DNS (1994) Cellulose - a random-walk along its historical path. *Cellulose* 1(1):1–25. doi:10.1007/bf00818796
- Irwin DC, Spezio M, Walker LP, Wilson DB (1993) Activity studies of 8 purified cellulases - specificity, synergism, and binding domain effects. *Biotechnol Bioeng* 42(8):1002–1013. doi:10.1002/bit.260420811
- Knowles J, Lehtovaara P, Teeri T (1987) Cellulase families and their genes. *Trends Biotechnol* 5(9):255–261. doi:10.1016/0167-7799(87)90102-8
- Knox JP (2008) Revealing the structural and functional diversity of plant cell walls. *Curr Opin Plant Biol* 11(3):308–313. doi:10.1016/j.pbi.2008.03.001
- Lemos MA, Teixeira JA, Domingues MRM, Mota M, Gama FM (2003) The enhancement of the cellulolytic activity of cellobiohydrolase I and endoglucanase by the addition of cellulose binding domains derived from *Trichoderma reesei*. *Enzyme and Microb Technol* 32(1):35–40. doi:10.1016/s0141-0229(02)00235-1
- Lynd LR, Weimer PJ, van Zyl WH, Pretorius IS (2002) Microbial cellulose utilization: Fundamentals and biotechnology (vol 66, pg 506, 2002). *Microbiol Mol Biol Rev* 66(4):739. doi:10.1128/mmr.66.4.739.2002
- Mansfield SD, Mooney C, Saddler JN (1999) Substrate and enzyme characteristics that limit cellulose hydrolysis. *Biotechnol Progr* 15(5):804–816. doi:10.1021/bp9900864
- Michael RG, Joseph S (2012) Molecular cloning: a laboratory manual. Cold Spring Harbor, New York
- Moser F, Irwin D, Chen S, Wilson DB (2008) Regulation and characterization of *Thermobifida fusca* carbohydrate-binding module proteins E7 and E8. *Biotechnol Bioeng* 100(6):1066–1077. doi:10.1002/bit.21856
- Mossessova E, Lima CD (2000) Ulp1-SUMO crystal structure and genetic analysis reveal conserved interactions and a regulatory element essential for cell growth in yeast. *Mol Cell* 5(5):865–876. doi:10.1016/s1097-2765(00)80326-3
- Pinto R, Moreira S, Mota M, Gama M (2004) Studies on the cellulose-binding domains adsorption to cellulose. *Langmuir* 20(4):1409–1413. doi:10.1021/la035611u
- Reinikainen T, Ruohonen L, Nevanen T, Laaksonen L, Kraulis P, Jones TA, Knowles JKC, Teeri TT (1992) Investigation of the function of mutated cellulose-binding domains of *Trichoderma reesei* cellobiohydrolase-I. *Proteins* 14(4):475–482. doi:10.1002/prot.340140408
- Saharay M, Guo H, Smith JC (2010) Mechanism of cellulose degradation by a cellobiohydrolase. *CeLS. PLoS ONE*. doi:10.1371/journal.pone.0012.947
- Saloheimo M, Paloheimo M, Hakola S, Pere J, Swanson B, Nyyssonen E, Bhatia A, Ward M, Penttila M (2002) Swollenin, a *Trichoderma reesei* protein with sequence similarity to the plant expansins, exhibits disruption activity on cellulosic materials. *Eur J Biochem* 269(17):4202–4211. doi:10.1046/j.1432-1033.2002.03095.x
- Smith MA, Rentmeister A, Snow CD, Wu T, Farrow MF, Mingardon F, Arnold FH (2012) A diverse set of family 48 bacterial glycoside hydrolase cellulases created by structure-guided recombination. *FEBS J* 279(24):4453–4465. doi:10.1111/febs.12032
- Sugimoto N, Igarashi K, Wada M, Samejima M (2012) Adsorption characteristics of fungal family 1 cellulose-binding domain from *Trichoderma reesei* cellobiohydrolase I on crystalline cellulose: Negative cooperative adsorption via a steric exclusion effect. *Langmuir* 28(40):14323–14329. doi:10.1021/la302352k
- Tahezadeh MJ, Karimi K (2007) Enzyme-based hydrolysis processes for ethanol from lignocellulosic materials: a review. *Bioresour* 2(4):707–738
- Tomme P, Vantilbeurgh H, Pettersson G, Vandamme J, Vandekerckhove J, Knowles J, Teeri T, Claeysens M (1988) Studies of the cellulolytic system of *Trichoderma reesei* QM-9414 - analysis of domain function in 2 cellobiohydrolases by limited proteolysis. *Eur J Biochem* 170(3):575–581. doi:10.1111/j.1432-1033.1988.tb13736.x
- Varnai A, Siika-aho M, Viikari L (2013) Carbohydrate-binding modules (CBMs) revisited: reduced amount of water counterbalances the need for CBMs. *Biotechnol Biofuels* 6:30–42. doi:10.1186/1754-6834-6-30
- Wang L, Zhang Y, Gao P (2008) A novel function for the cellulose binding module of cellobiohydrolase I. *Sci China Ser C Life Sci* 51(7):620–629. doi:10.1007/s11427-008-0088-3
- Xiao ZZ, Gao PJ, Qu YB, Wang TH (2001) Cellulose-binding domain of endoglucanase III from *Trichoderma reesei* disrupting the structure of cellulose. *Biotechnol Lett* 23(9):711–715. doi:10.1023/a:1010325122851

doi:10.1186/s13568-014-0036-9

Cite this article as: Mello and Polikarpov: Family 1 carbohydrate binding-modules enhance saccharification rates. *AMB Express* 2014 4:36.

Submit your manuscript to a SpringerOpen® journal and benefit from:

- Convenient online submission
- Rigorous peer review
- Immediate publication on acceptance
- Open access: articles freely available online
- High visibility within the field
- Retaining the copyright to your article

Submit your next manuscript at ► [springeropen.com](http://springeropen.com)