

## AUTHOR CORRECTION

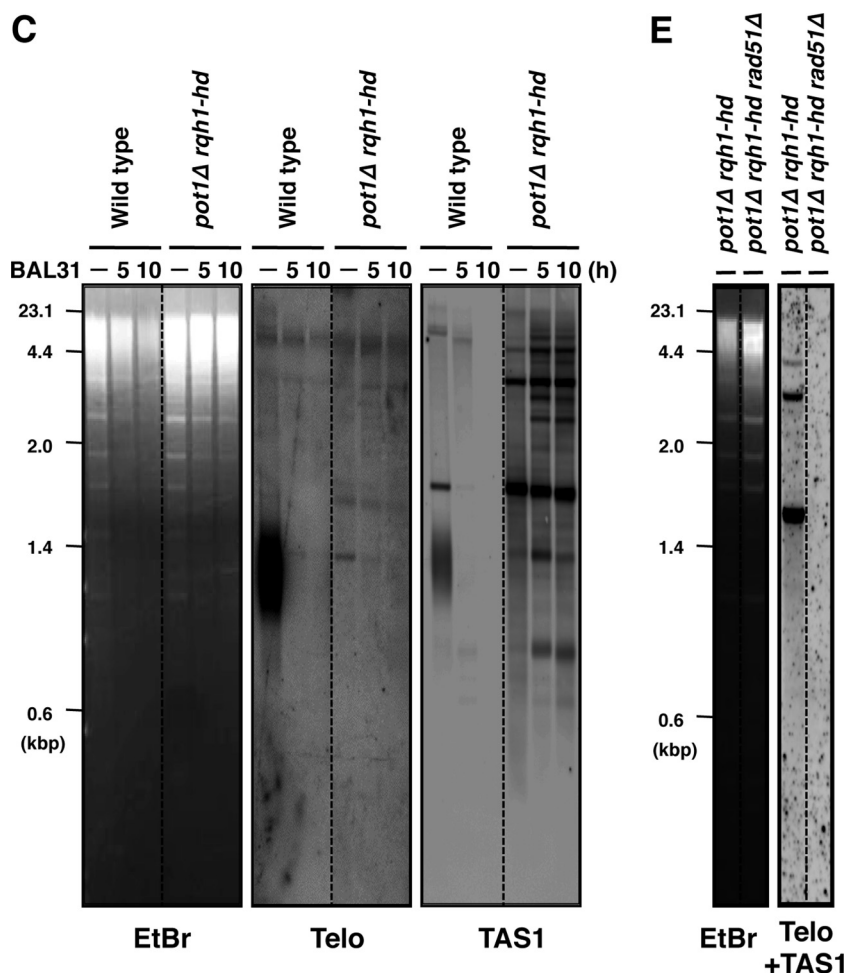
# Fission Yeast *Pot1* and *RecQ* Helicase Are Required for Efficient Chromosome Segregation

**Katsunori Takahashi, Ryota Imano, Tatsuya Kibe, Hiroyuki Seimiya, Yukiko Muramatsu, Naoki Kawabata, Genki Tanaka, Yoshitake Matsumoto, Taisuke Hiromoto, Yuka Koizumi, Norihiko Nakazawa, Mitsuhiro Yanagida, Masashi Yukawa, Eiko Tsuchiya, Masaru Ueno**

Department of Molecular Biotechnology, Graduate School of Advanced Sciences of Matter, Hiroshima University, Higashi-Hiroshima, Japan; Department of Chemistry, Shizuoka University, Shizuoka, Japan; Division of Molecular Biotherapy, Cancer Chemotherapy Center, Japanese Foundation for Cancer Research, Koto-Ku, Tokyo, Japan; Graduate School of Biostudies, Kyoto University, Yoshida-Honmachi, Sakyo-Ku, Kyoto, Japan

Volume 31, no. 3, p. 495–506, 2011. In two figures, lanes that were spliced out were not properly indicated as noted below. Correction of these errors does not change any of the results or conclusions of the article.

Page 498, Fig. 2C and E: The dotted lines in the corrected panels below indicate where intervening lanes were removed.



Page 499, Fig. 3C: The dotted line in the corrected panel below indicates where intervening lanes were removed.

