

AUTHOR CORRECTION

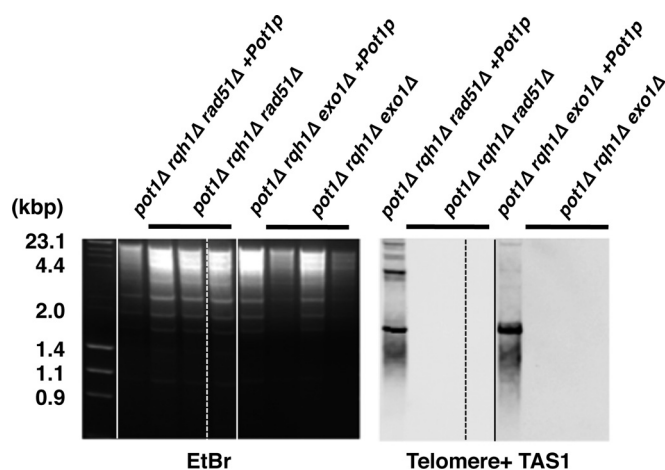
Fission Yeast RecQ Helicase Rqh1 Is Required for the Maintenance of Circular Chromosomes

Tomoko Nanbu, Katsunori Takahashi, Johanne M. Murray, Naoya Hirata, Shinobu Ukimori, Mai Kanke, Hisao Masukata, Masashi Yukawa, Eiko Tsuchiya, Masaru Ueno

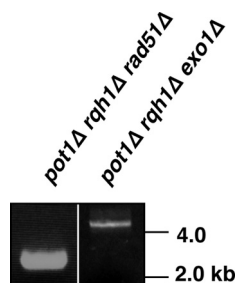
Department of Molecular Biotechnology, Graduate School of Advanced Sciences of Matter, Hiroshima University, Higashi-Hiroshima, Japan; Genome Damage and Stability Centre, University of Sussex, Brighton, United Kingdom; Department of Biological Sciences, Graduate School of Science, Osaka University, Osaka, Japan

Volume 33, no. 6, p. 1175–1187, 2013. In five figures, splicing was not properly indicated. Details are provided below. Correction of these errors does not change any of the results or conclusions of the article.

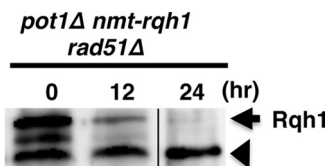
Page 1177, Fig. 1B: Separate gels were presented as single gels, and lanes within gels that were spliced out were not properly indicated. Solid lines in the corrected panel below indicate that data are from different gels; dotted lines identify where intervening lanes were spliced out.



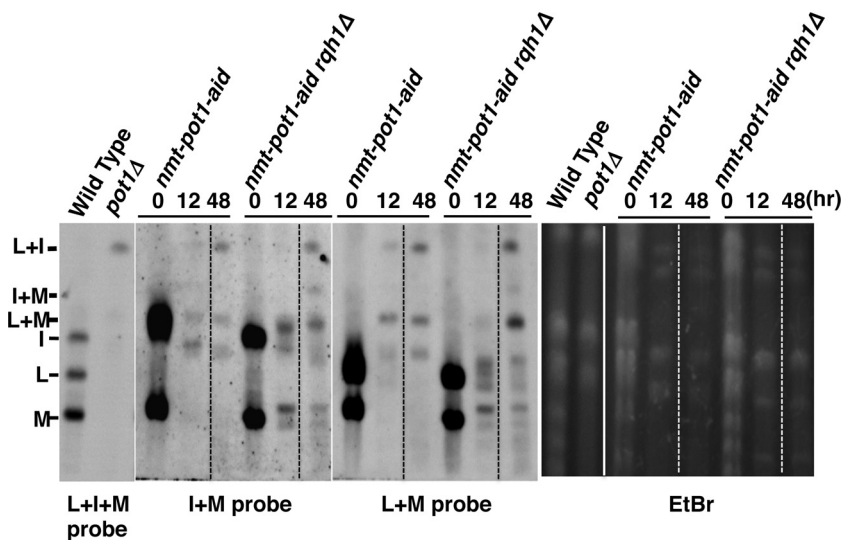
Page 1178, Fig. 2D: Separate gels were presented as a single gel. The line in the corrected panel below indicates that the samples are from different gels.



Page 1179, Fig. 3B, right: Separate gels were presented as a single gel. The line in the corrected panel below indicates that data are from different gels.



Page 1181, Fig. 5A: Lanes that were spliced out were not properly indicated, and separate gels were presented as a single gel. Dotted lines in the corrected panel below identify where intervening lanes were spliced out. The solid line in the ethidium bromide (EtBr) data indicates that the data are from different gels.



Page 1182, Fig. 6B: Lanes that were spliced out were not properly indicated. Dotted lines in the corrected panel below identify where intervening lanes were spliced out.

