



Ex vivo Expansion of Bovine Corneal Endothelial Cells in Xeno-Free Medium Supplemented with Platelet Releasate

Ming-Li Chou¹✉, Thierry Burnouf²✉, Tsung-Jen Wang^{3*}

1 Graduate Institute of Medical Sciences, College of Medicine, Taipei Medical University, Taipei, Taiwan, R.O.C., **2** Graduate Institute of Biomedical Materials and Tissue Engineering, Taipei Medical University, Taipei, Taiwan, R.O.C., **3** Department of Ophthalmology, Taipei Medical University Hospital, Taipei, Taiwan, R.O.C.; Department of Ophthalmology, School of Medicine, College of Medicine, Taipei Medical University, Taipei, Taiwan, R.O.C.; National Taiwan University College of Medicine, Taipei, Taiwan, R.O.C.; and Department of Ophthalmology, National Taiwan University Hospital, Taipei, Taiwan, R.O.C.

Abstract

Clinical-grade *ex vivo* expansion of corneal endothelial cells can increase the availability of corneal tissues for transplantation and treatment of corneal blindness. However, these cells have very limited proliferative capacity. Successful propagation has required so far to use very complex growth media supplemented with fetal bovine serum and other xenocomponents. We hypothesized that human platelet releasates rich in multiple growth factors, and in particular neurotrophins, could potentially be a useful supplement for *ex vivo* expansion of corneal endothelium cells due to their neural crest origin. Platelet releasates were prepared by calcium salt activation of apheresis platelet concentrates, subjected or not to complement inactivation by heat treatment at 56°C for 30 minutes. Platelet releasates were characterized for their content in proteins and were found to contain high amount of growth factors including platelet-derived growth factor-AB (30.56 to 39.08 ng/ml) and brain-derived neurotrophic factor (30.57 to 37.11 ng/ml) neurotrophins. We compared the growth and viability of corneal endothelium cells in DMEM-F12 medium supplemented with different combinations of components, including 2.5%~10% of the platelet releasates. Corneal endothelium cells expanded in platelet releasates exhibited good adhesion and a typical hexagonal morphology. Their growth and viability were enhanced when using the complement-inactivated platelet releasate at a concentration of 10%. Immunostaining and Western blots showed that CECs maintained the expressions of four important membrane markers: Na-K ATPase α 1, zona occludens-1, phospho-connexin 43 and N-cadherin. In conclusion, our study provides the first proof-of-concept that human platelet releasates can be used for *ex vivo* expansion of corneal endothelium cells. These findings open a new paradigm for *ex vivo* propagation protocols of corneal endothelium cells in compliance with good tissue culture practices and regulatory recommendations to limit the use of xenogenic materials.

Citation: Chou M-L, Burnouf T, Wang T-J (2014) *Ex vivo* Expansion of Bovine Corneal Endothelial Cells in Xeno-Free Medium Supplemented with Platelet Releasate. PLOS ONE 9(6): e99145. doi:10.1371/journal.pone.0099145

Editor: Pranela Rameshwar, Rutgers - New Jersey Medical School, United States of America

Received: April 17, 2014; **Accepted:** May 11, 2014; **Published:** June 19, 2014

Copyright: © 2014 Chou et al. This is an open-access article distributed under the terms of the Creative Commons Attribution License, which permits unrestricted use, distribution, and reproduction in any medium, provided the original author and source are credited.

Data Availability: The authors confirm that all data underlying the findings are fully available without restriction. All data are included within the manuscript.

Funding: This work was funded by the National Science Council, Taipei, Taiwan (grant no. NCS102-2320-B-038-012), and Taipei Medical University, Taipei, Taiwan (grant no. TMU101-AE1-B65). The funders had no role in study design, data collection and analysis, decision to publish, or preparation of the manuscript.

Competing Interests: The authors have declared that no competing interests exist.

* Email: tjw@tmu.edu.tw

✉ These authors contributed equally to this work.

Introduction

The corneal endothelium, an essential part of the cornea, is composed of a unique thin, fragile monolayer of hexagonal cells that dwell in the innermost layer of the cornea. Corneal endothelial cells (CECs) are embryologically derived from the neural crest. They cover the posterior surface of Descemet's membrane and make contact with the aqueous humor [1]. CECs constitute a physiological and tight intercellular barrier that pumps fluids across the cornea, regulating hydration of the corneal stroma [2], and contributes to maintaining transparency and clarity for optimal visual functions [1,3–6]. Damage, injury, and pathologies, like intraocular surgery and Fuchs dystrophy, cause CECs to crumble, lead to excessive hydration and opacification of the cornea, and result in severe visual impairment. Repairing CECs is very challenging since these cells exhibit a very limited prolifer-

ative capacity [3]. Corneal transplantation, which is needed by an increasing number of blind patients worldwide due to aging populations, is the only current option for visual restoration with corneal blindness [7,8]. The critical shortage of adequate tissue quality limits the availability of donor corneas [9], supporting the development of *ex vivo* CEC expansion to improve the supply for clinical-grade transplantation.

CECs have long been thought to be unable to expand *ex vivo*. However, expansion of CECs was achieved using complex culture medium supplemented with fetal bovine serum (FBS), purified xenogenic proteins, bovine insulin, recombinant growth factors [such as epithelial growth factor (EGF) and platelet-derived growth factor (PDGF)-BB], pituitary extracts, and others compounds like cholera toxin [4,10–15]. Nevertheless, such materials have drawbacks, including, for instance the case of components of

bovine origin, exposing recipients to immunological [16,17], viral [18], and/or prion [19] risks. As such, they are discouraged or prohibited by regulatory authorities and the World Health Organization [20,21]. In addition, many recombinant growth factor supplements are either only of reagent-grade quality, not licensed for this specific application, or very expensive. Alternative xeno-free supplements for CEC expansion therefore need to be identified. Considering the neural crest origin of the CECs, we hypothesized that human platelet releasates, which contain a complex mixture of growth factors, including PDGF, vascular endothelial growth factor (VEGF), and brain-derived growth factor (BDNF) neurotrophins [22], could potentially be used as a sole supplement of basal growth medium for *ex vivo* expansion of CECs. To our knowledge, this is the first study reporting the use of human platelet releasates as a growth medium supplement to isolate and expand primary CECs.

Materials and Methods

Collection of Platelet Concentrates

Platelet concentrates were prepared using a Haemonetics MCS+ apheresis machine (Haemonetics Corp., Braintree, MA, USA) from 4 volunteer donors who provided written informed consent, with approval by the Institutional Review Board of Taipei Medical University: N° 201210007. Platelet concentrates (about 280 mL each) were stored at room temperature under mild mixing on a platelet agitator at $22 \pm 2^\circ\text{C}$ for 1~3 days after collection, and were individually processed as described below and summarized in Fig. 1. The platelet concentrate (1 ml) was taken aseptically under laminar flow to determine the blood cell count and hemoglobin, as in our previous research, using a cell counter (ABC Vet automatic blood counter, ABX Diagnostics, Montpellier, France) [23].

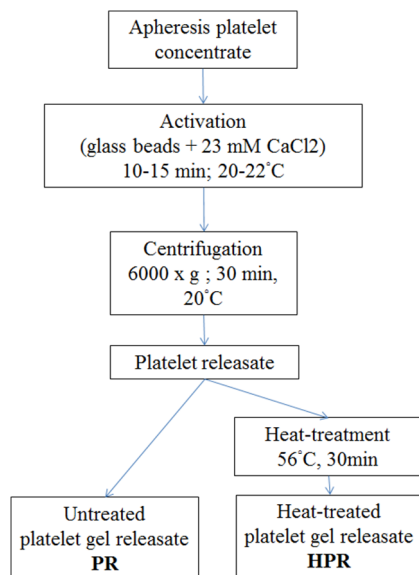


Figure 1. Preparation of platelet materials. Platelet releasate (PR) and heat-treated PR (HPR) were obtained by 23 mM calcium chloride activation for 10~15 min at 20~22°C in the presence of glass beads. The fibrin-free supernatant was clarified at 6000×g for 30 min at 20°C. Half of the releasate (PR) was aliquoted and frozen at <math><-20^\circ\text{C}</math> until being used. HPR was complement-inactivated at 56°C for 30 min and frozen at <math><-20^\circ\text{C}</math>.

doi:10.1371/journal.pone.0099145.g001

Preparation of Platelet Releasate (PR)

The preparation procedure is summarized in Fig. 1. Briefly, platelet concentrates were aseptically taken from the collection bag and individually transferred to Falcon tubes (Becton Dickinson Biosciences, Franklin Lakes, NJ, USA) containing glass beads that were previously sterilized by autoclaving, as we described before [24]. Sterile CaCl_2 (1 M) was added under laminar flow to the platelet concentrate to a final concentration of 23 mM and mixed gently for 10~15 min at 20~22°C to activate the platelets and blood coagulation and convert the plasma fibrinogen into fibrin. The fibrin clot was removed by adhesion to the glass beads through vigorous shaking [24]. The fibrin-free supernatant was centrifuged at 6000×g for 30 min at 20°C to clarify and recover the fibrin-free supernatant. Half of the releasate (termed the PR) was aliquoted and frozen at <math><-20^\circ\text{C}</math> until being used. The other half (termed the HPR) was complement-inactivated at 56°C for 30 min in a temperature-controlled water-bath and subsequently aliquoted and frozen at <math><-20^\circ\text{C}</math>. The absence of residual blood cells in the PR and HPR was controlled before freezing by counting as indicated above. A sample of the starting PC was kept, centrifuged at 2500×g at room temperature to pelletize the platelet and obtain platelet-poor-plasma (PPP) that was used as a control for determining the growth factors.

Growth Factor Determination and Protein Profile

The PR and HPR samples were thawed at 37°C and analyzed within 1 h. Growth factors were determined using the respective Quantikine enzyme-linked immunosorbent assay (ELISA) kits (R&D Systems, Minneapolis, MN, USA) following the manufacturer's instructions, as described in our former research [25–27]. Standards and samples were assayed in duplicate, and mean values were calculated after taking into account the dilution factor of the samples. Sodium dodecyl sulfate-polyacrylamide gel electrophoresis (SDS-PAGE) was performed as before [24] using gradient gels, reagents, and electrophoretic systems from Invitrogen (Carlsbad, CA, USA). A prestained protein molecular weight standard (Novex Sharp, Invitrogen) was used to assess the molecular mass.

Chemical Analysis

Contents of protein, glucose, chloride, sodium, potassium, calcium, phosphate, magnesium, iron, the total iron capacity, ferritin, vitamin B12, and folate of PR and HPR were determined using a Roche MODULE P800 Automatic Biochemical Analyzer (Roche Diagnostics, Mannheim, Germany) as previously described [27].

CEC Isolation and Culture Conditions

Over 30 fresh bovine eyes were purchased from a local butcher, a few hours after the animals were killed at a local abattoir. The eyes were disinfected by immersion in an iodine solution for 3~5 min and then transferred into phosphate-buffered saline (PBS; Life Technologies, Grand Island, NY, USA). CECs were isolated by peeling from the corneal endothelium sheets and digested at 37°C in 1x TrypLE Express (Gibco, Life Technologies) for 30 min, as in our previous work [11]. The medium used for isolation and culture was Supplemented Hormonal Epithelial Medium (SHEM), made of an equal volume of HEPES-buffered Dulbecco's modified Eagle medium (DMEM) and Ham F12 (Invitrogen, Life Technologies) supplemented with 5% FBS (Gibco, Life Technologies), 5 µg/mL insulin, 5 µg/mL transferrin, 5 ng/mL selenium, 50 unit/mL penicillin, 50 µg/mL streptomycin, 250 ng/mL amphotericin B (all from Invitrogen, Life

Table 1. Comparison of different medium conditions for in vitro culture of corneal endothelial cells (CECs).

Condition	1	2	3	4	5	6	7
Medium Base	DMEM + F12	DMEM + F12	DMEM + F12	DMEM + F12	DMEM + F12	DMEM + F12	DMEM + F12
FBS	5%	5%	-	-	-	-	-
Human platelet lysate	-	-	5% PR	5% HPR	5% HPR	5% PR	5% HPR
7.5% Sodium Bicarbonate	+	+	+	+	+	+	+
Heparin	-	+	+	+	-	+	+
0.5% DMSO	+	+	-	-	-	+	+
2 ng/ml rHuEGF	+	+	-	-	-	-	-
5 µg/ml Insulin; +5 µg/ml Transferrin; +5 ng/ml Selenium	+	+	-	-	-	-	-
1 nM Cholera Toxin	+	+	-	-	-	-	-
1% Amp B; +1% Pen- Strep	+	+	+	+	+	+	+

DMEM, Dulbecco's modified Eagle medium; PR, platelet releaseate; HPR, heat-treated platelet lysate; rHuEGF, recombinant human epithelial growth factor. doi:10.1371/journal.pone.0099145.t001

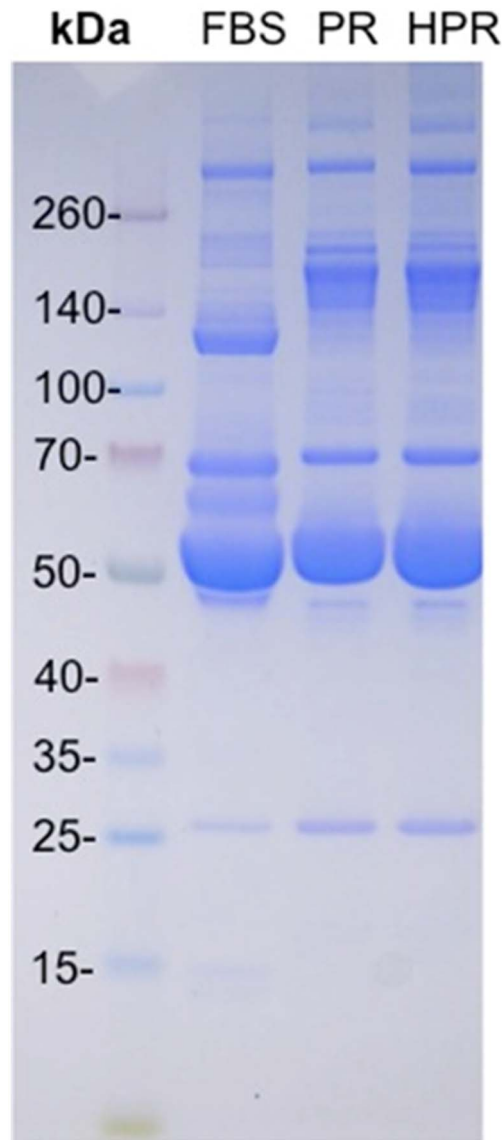


Figure 2. SDS-PAGE under non-reduced conditions. Molecular weight protein markers (a), fetal bovine serum (FBS, b), platelet releaseate (PR, c), and heat-treated PR (HPR, d). Patterns show the absence of fibrinogen (about 260 kDa) in FBS, PR, and HPR, higher contents of immunoglobulin G (160 kDa) in the PR and HPR, and the presence of albumin (58 kDa) as the main protein component in FBS, PR, and HPR. doi:10.1371/journal.pone.0099145.g002

Technologies), 0.5% dimethyl sulfoxide (DMSO), 2 ng/mL recombinant human EGF (rHuEGF), and 1 nM cholera toxin (all from Sigma-Aldrich, St. Louis, MO, USA). Alternatively, the basal medium was supplemented with 2.5%, 5%, 7.5%, or 10% human platelet fractions only. After digestion, bovine CECs (BCECs) were seeded at a rate of approximately 10^4 cells/well in a 24-well culture plate (2 cm²; Becton Dickinson, Franklin Lakes, NJ, USA), and cultured in an incubator (Forma 310, Thermo Scientific, Neihu, Taiwan) at 37°C in an atmosphere of 95% air and 5% CO₂. The medium was changed every 2~3 days. Seven combinations of cell culture conditions were evaluated (Table 1) to determine the possibility of avoiding FBS and other xenogenic or recombinant nutritional supplements (rh-EGF, transferrin, insulin, and cholera toxin), DMSO, and cholera toxin. Conditions with

Table 2. Contents of proteins and platelet growth factors in platelet releasate (PR) and heat-treated PR (HPR) (***) $p < 0.001$, PR and HPR, compared to platelet-poor plasma).

	Platelet-poor plasma		PR		HPR	
	Mean	SD	Mean	SD	Mean	SD
Total protein (mg/ml)	58.5	2.85	55.50	2.12	54.50	3.54
PDGF-AB (ng/ml)	2.65	0.11	39.08***	1.46	30.56***	1.22
BDNF (ng/ml)	3.51	0.15	37.11***	3.93	30.57***	0.34
VEGF (ng/ml)	ND	ND	0.21***	0.08	0.14***	0.11
EGF (ng/ml)	0.08	0.00	0.44***	0.00	0.45***	0.01
b-FGF (pg/ml)	18.61	0.00	44.79***	8.00	117.95***	4.65
TGF- β 1 (ng/ml)	10.10	0.08	29.93***	1.25	33.39***	1.05
HGF (ng/ml)	0.22	0.07	0.16	0.04	0.37	0.01

PDGF, platelet-derived growth factor; BDNF, brain-derived neurotropic factor; VEGF, vascular endothelial growth factor; EGF, epithelial growth factor; FGF, fibroblast growth factor; TGF, transforming growth factor; HGF, hepatocyte growth factor; ND, not detectable.
doi:10.1371/journal.pone.0099145.t002

and without a heparin anticoagulant were also tested to prevent the risk of fibrin gel formation affecting cell cultures.

Morphology, Cell Count, and Cell Viability Assay

The morphology of cells was observed under a phase-contrast microscope (IX71, Olympus, Tokyo, Japan) at 1, 3, 5, and 7 days. For counting, CECs were trypsinized at 1, 3, 5, and 7 days, and viable cells were counted using a Countess Automated Cell Counter (Invitrogen) following the manufacturer's instructions. Cell numbers were determined for triplicate wells at each time point. CECs were seeded at a rate of approximately 10^4 cells/well into a 96-well plate (Becton Dickinson) and cultured in different media for 24 h until they reached confluence. The medium was removed and replaced with 100 μ L of fresh culture medium. MTT (10 μ L of a 12 mM stock solution; Invitrogen, Life Technologies) was added and incubated at 37°C for 4 h. The medium was removed, and 50 μ L of DMSO was added to each

well to dissolve the formazan crystals, and it was thoroughly mixed before incubation for 10 min at 37°C. The absorbance at 540 nm was measured to assess cell viability.

Immunocytochemistry

Cells were seeded in 24-well plates and grown to confluence which typically required 3–5 days. Cells were carefully washed with PBS and fixed in fresh 4% paraformaldehyde (PFA)/PBS at pH 7.4 for 10–20 min at room temperature. After washing twice with PBS, PFA-fixed cells were permeabilized for 5 min in 0.2% Triton X-100 (Sigma-Aldrich) in PBS. Fixed cells were blocked in 10% BSA in PBS for 1 h at room temperature. As in our previous experiments [12], primary antibodies, including rabbit anti-Na-K ATPase α 1 (1:100 dilution; Merck Millipore, Billerica, MA, USA), rabbit anti-zona occludens-1 (ZO-1; 1:100; Invitrogen, Life Technologies), phospho-cx43 (1:100; Merck Millipore), and N-cadherin (1:100; Becton Dickinson), were incubated

Table 3. Comparative chemical analysis of fetal bovine serum (FBS), platelet releasate (PR), and heat-treated platelet releasate (HPR) ($n = 2$).

	FBS	PR	HPR
Glucose (mg/dl)	81	340	329
Chloride (mEq/l)	94	119	113
Sodium (mEq/l)	138	168	161
Potassium (mEq/l)	12.9	3.8	3.7
Calcium (mg/dl)	13.9	50.1	52.2
Phosphate (mg/dl)	10.2	3.4	3.1
Magnesium (mg/dl)	3.3	2.7	2.0
Iron (μ g/dl)	195	105	104
TIBC (μ g/dl)	247	945	943
UIBC (μ g/dl)	52.00	840	839.00
Ferritin (ng/ml)	1.0	37	37.00
Vitamin B12 (pg/ml)	308.3	292.2	161.90
Folate (ng/ml)	7.43	1.97	2.51
Hemoglobin (g/dl)	<0.10	<0.10	<0.10

TIBC, total iron-binding capacity; UIBC, unsaturated iron-binding capacity.
doi:10.1371/journal.pone.0099145.t003

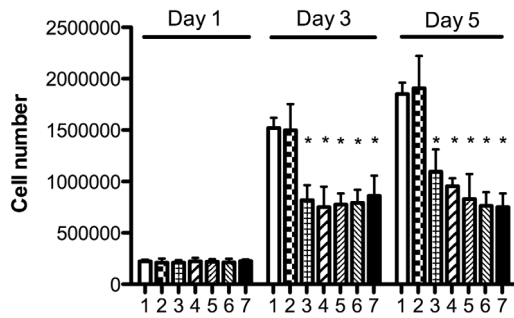


Figure 3. Cell counts at D1, D3, and D5 of corneal endothelial cells (CECs) grown in DMEM + F12 basal medium and seven different supplement combinations as detailed in Table 1. 1: Complete SHEM; 2: complete SHEM with heparin; 3: 5% platelet releasate (PR) with heparin, without DMSO; 4: 5% heat-treated PR (HPR) with heparin, without DMSO; 5: 5% HPR without heparin or DMSO; 6: 5% PR with heparin and DMSO; and 7: 5% HPR, with heparin and DMSO. * $p < 0.05$ vs. condition 1.

doi:10.1371/journal.pone.0099145.g003

overnight at 4°C. Cells were washed twice with PBS and then incubated with a 1:1000 dilution of FITC-labeled secondary antibodies (eBioscience, San Diego, CA, USA) in blocking buffer for 1 h at room temperature. After washing three times in PBS, all cells were stained with the DAPI nuclear marker (1:5000; Invitrogen, Life Technologies) for 20 min at room temperature. A fluorescent mounting solution was added, the fluorescence was visualized on a Nikon Eclipse E-800 fluorescence microscope (Tokyo, Japan), and images were obtained with a spot digital camera.

Western Blot Analysis

A Western blot analysis was performed on CECs cultured in medium supplemented with FBS or HPR until they had reached confluence. In brief, cells lysis was performed using RIPA (Sigma) for 10 min on ice. Proteins from cell extracts were separated by SDS-PAGE using 4%~12% Bis-Tris Protein Gel (Invitrogen), transferred to polyvinylidene difluoride membranes, and blocked with a blocking solution. The primary antibodies described above were used followed by appropriate secondary antibodies conjugated with alkaline phosphatase.

Statistical Analysis

Data are reported as the mean \pm standard deviation (SD). Statistical analyses of cell counts and MTT were performed using Student's *t*-test. A *p* value of < 0.05 was considered a significant difference.

Results

Cell Counts of Starting Platelet Concentrates

The mean platelet, white blood cell, and red blood cell counts in starting platelet concentrates were $1250 \pm 167.3 \times 10^6$ /ml, $0.85 \pm 0.078 \times 10^6$ /ml, and $0.03 \pm 0.009 \times 10^9$ /ml, respectively, typical of this apheresis platelet collection procedure. Hemoglobin was undetectable. There was no detectable blood cells in the PR or HPR.

SDS-PAGE, Growth Factors, and Cytokines in PRs

The SDS-PAGE protein profile of FBS, PR, and HPR (Fig. 2) showed that all three materials contained albumin (58 kDa) but had no detectable fibrinogen (260 kDa). Immunoglobulin G (IgG; 160 kDa) was present in the PR and HPR but was undetectable in

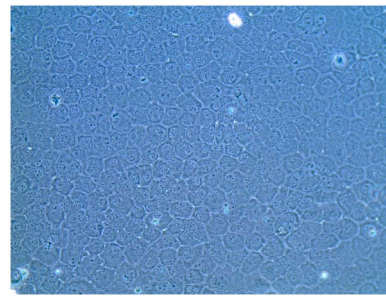


Figure 4. Micrograph showing the hexagonal morphology of a confluent layer of corneal endothelial cells (CECs) grown in DMEM + F12 medium supplemented with 5% heat-treated platelet releasate (HPR; magnification 200x).

doi:10.1371/journal.pone.0099145.g004

FBS. The PR and HPR had protein profiles typical of human serum. The content of platelet growth factors (Table 2) was significantly higher ($p < 0.001$) in the PR and HPR compared to PPP, apart from the hepatocyte growth factor (HGF). Results of the chemical analysis (Table 3) did not reveal much difference between the PR and HPR apart from less vitamin B12 in the HPR. The most important differences were more glucose, calcium, TIBC, UIBC, and ferritin, and less potassium, phosphate, iron and folate in platelet releasates compared to FBS.

CEC Growth, Viability, and Morphology in 5% PRs

The possibility of expanding CECs in basal medium supplemented with seven different combinations of supplements (as described in Table 1) containing either 5% FBS or 5% PRs as the main protein nutrient source was evaluated in 24-well plates. Growth medium was changed on days 0, 2, and 4. Cells took 5 days to reach confluence when grown in complete SHEM. Cell counts at D1, D3, and D5 are shown in Fig. 3. CECs could expand in all conditions, but significantly higher ($p < 0.05$) cell growth was observed in complete medium supplemented with 5% FBS and other supplements compared to 5% PR or HPR only. MTT data on D5 confirmed that CECs exhibited good viability in the PR and HPR (data not shown). No growth medium gelation was observed in the absence of heparin, indicating that its addition was not necessary. There was no significant difference when cells were grown in PR or HPR with or without DMSO. Therefore no heparin or DMSO was used in further experiments. Optical microscopy revealed that CECs in the presence of 5% FBS, PR, or HPR grew as a monolayer with a typical hexagonal structure. However, CECs grown in basal medium supplemented with 5% HPR exhibited a more-regular shape and more-hexagonal structure than when grown with 5% PR (Fig. 4). HPR supplementation was therefore used in further experiments.

Impact of 2.5%~10% HPR Supplementation on CEC Growth

The possibility of enhancing CEC expansion by varying the content of HPR supplemented at 2.5%~10% was evaluated over 7 days of culture. There was significant dose-dependent enhanced growth ($p > 0.05$) with an increasing concentration of HPR up to 10%, compared to 2.5% HPR. Cells reached confluence at days 3, 5, and 7 when grown with 10%, 7.5%, and 5% HPR, respectively (Fig. 5A). The MTT viability assay performed on day 7 showed significantly better cell viability in medium supplemented with HPR at 7.5% ($p < 0.05$) or 10% ($p < 0.01$) compared to 2.5% (Fig. 5B). Therefore 10% HPR was used as the supplement for further isolation of primary CECs.

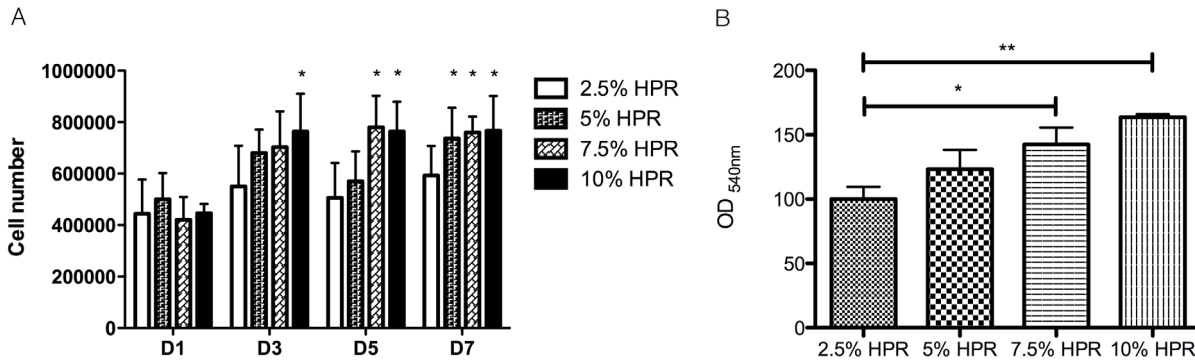


Figure 5. Cell count and viability assay. (A) Count of corneal endothelial cells (CECs) cultured in DMEM + F12 basal medium supplemented with 2.5%, 5%, 7.5%, or 10% heat-treated platelet releaseate (HPR) for 1, 3, 5, and 7 days; (B) MTT assay of CECs cultured in DMEM + F12 basal medium supplemented with 2.5%, 5%, 7.5%, and 10% HPR for 7 days. **p*<0.05; ***p*<0.01 compared to 2.5% HPR. doi:10.1371/journal.pone.0099145.g005

Immunofluorescence and Western Blot Analysis of Membrane Markers

Immunofluorescent staining (Fig. 6) showed that cells isolated and expanded in basal medium supplemented with 10% HPR expressed ZO-1 (A), Na-K ATPase (B), connexin 43 (C), and N-cadherin (D). Similar levels of membrane marker expressions were obtained with cells grown in complete SHEM (not shown). A Western blot analysis (Fig. 7) showed similar expression levels for these membrane markers [ZO-1 (A), Na-K ATPase (B), connexin 43 (C), and N-cadherin (D)] in cells isolated and propagated in control SHEM or HPR.

Discussion

Procedures for *ex vivo* clinical-grade expansion of CECs need to be developed to increase the supply of corneal tissues for transplants. However, the low proliferative capacity of CECs makes *ex vivo* expansion a challenging task. So far, successful expansion of CECs has required supplementation of growth media

with complex mixtures of FBS, various other xenogenic compounds, and recombinant growth factors that are incompatible with clinical use [12]. Alternative xeno-free supplements are needed to meet requirements for clinical applications of CECs for transplantation. Our goal here was to explore the possibility of using human PRs as the sole supplement for expanding CECs. Based on our previous experience [24], we selected a PR obtained by calcium chloride activation rather than a lysate obtained by freeze-thaw cycles [28]. Indeed, this allowed us to (a) preserve the numerous protein nutrients, such as albumin (an important carrier for lipids, vitamins and hormones) transferrin or haptoglobin, present in plasma [27] and (b) remove undesirable proteins like fibrinogen that is prone to conversion into insoluble fibrin which impairs cell growth [29]. Fibrinogen removal by CaCl₂ activation of the platelet concentrate further avoided the need for heparin which has the drawback of being of porcine origin and potentially impairs cell proliferation, at concentrations of >0.6 IU/mL [30]. From previous research, we knew that 23 mM CaCl₂, by inducing endogenous thrombin formation, triggers platelet activation and growth factor release into the releaseate [24]. Our work first identified that 5% PR could be used to expand CECs, even though cell growth was significantly less than when using full SHEM. We

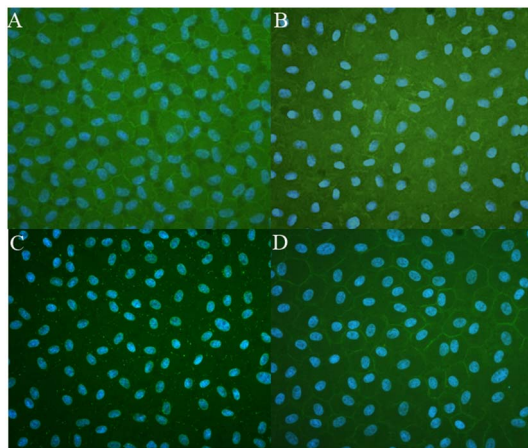


Figure 6. Photomicrographs of immunostaining showing expression of the membrane markers ZO-1 (A), Na⁺K⁺/ATPase (B), connexin 43 (C), and N-cadherin (D) immunostaining of a confluent layer of corneal endothelial cells (CECs) isolated and expanded in DMEM + F12 medium supplemented with 10% heat-treated platelet releaseate (HPR). Cell nuclear markers were stained with DAPI. Proteins were clearly localized at plasma membranes of cells with a hexagonal shape (magnification 200x). doi:10.1371/journal.pone.0099145.g006

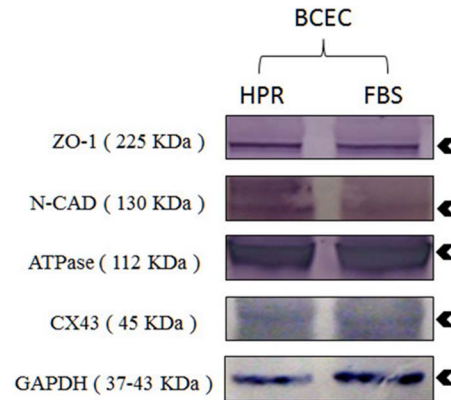


Figure 7. Western blot analysis of membrane markers ZO-1, N-cadherin (N-CAD), Na-K ATPase (ATPase), connexin 43 (CX43), in cells isolated and expanded in DMEM + F12 medium supplemented with 10% heat-treated platelet releaseate (HPR) or complete SHEM medium (FBS). Molecular weight (kDa) of membrane markers is shown in parenthesis. GAPDH: Glyceraldehyde 3-phosphate dehydrogenase experimental marker control. doi:10.1371/journal.pone.0099145.g007

then observed that CECs expanded in a PR subjected to heat-treatment exhibited more-typical hexagonal morphology and good transparency. We suspect that the favorable effect of the heat-treatment was due to inactivation of the plasma complement. Recently, another HPR, developed for treating dry-eye syndrome, increased the proliferation and migration potential of ocular surface cells better than a non-heat-treated equivalent [31]. Escalating dose experiments established that significantly improved cell growth and viability were obtained by increasing HPR supplementation to 10%. In this situation, CECs still maintained a typical hexagonal shape. CECs did not undergo fibroblastic transformation [14,32,33] because when this phenomenon happens CECs lose their functions, which was not the case here. We verified that expressions of important cell membrane markers, in particular ZO-1 and Na-K ATPase, were seen at confluence when CECs were isolated and expanded in serum-free, xeno-free medium supplemented with the HPR. The activity of Na-K ATPase is important for the proper activity of the fluid pump and for controlling the transparency of the cornea [34], while ZO-1 ensures the tightness of cell junctions [35]. Therefore, our results demonstrated that CEC isolation and *ex vivo* expansion in xeno-free medium supplemented with 10% heat-treated human PR was achievable under conditions that maintain cell transparency, the hexagonal morphology, and important membrane marker expressions.

The fact that platelet materials can be used as a sole supplement to expand CECs *ex vivo* is very intriguing. PRs were already proven to be excellent for *ex vivo* expansion of human primary cells [27] including adipose-derived stem cells [36], and they have great potential in regenerative medicine and cell therapy [22,37]. PRs provide plasma proteins and nutrients, such as sodium, potassium, magnesium, iron, and glucose. Most importantly, we showed that they contain a unique physiological mix of natural growth factors that may be crucial for CEC expansion. Studies showed the role of growth factors in the regeneration and transparency of the cornea [15,38]. When initiating our work, we hypothesized that considering the neural crest origin of PDGF, BDNF, and VEGF neurotrophins, that are essential for brain tissues and neuronal survival, these cells may stimulate CEC growth *ex vivo* [2,14]. Growth factors are known to exert important physiological roles in maintenance of the cornea [39]. PDGF-AB is present at approximately 35 ng/ml in PR. PDGF-BB promotes rat CEC growth and viability [40], whereas natural PDGF (a mixture of the AA, AB, and BB isomers), at 15~62 ng/ml, significantly enhanced CEC growth and would healing *in vitro* [41]. BDNF, at around 35 ng/ml, may also be a key factor in CEC expansion. It is present in its mature 13-kDa form in PRs [26,42–44]. The tropomyosin-related kinase B (TrkB) receptor, which mediates BDNF activity, is expressed in human and rabbit corneal epithelium and stroma [39], but to our knowledge, has not yet been identified in CECs. BDNF influences the development of the eye, and at 200 ng/mL, enhances the proliferation of CECs [39]. Its role in supporting CEC expansion and morphology is consistent with supplementation of growth medium with 20 ng/ml of nerve growth factor [15,45], a neurotrophin close to BDNF [46], and by 100 µg/ml of pituitary extract, which contains BDNF [47], to support the proliferative capacity of human CECs. VEGF is present in the

platelet releasates at 0.2~0.3 ng/ml. It is also used as a supplement of CEC growth medium [13,48]. The roles of the other platelet growth factors cannot be excluded. For instance, EGF, which was present at approximately 0.45 ng/ml in our PRs is commonly used at 2~5 ng/ml to supplement CEC expansion media [12–14,49], but 0.01 ng/ml was found sufficient to promote the growth of rabbit CECs [15]. EGF receptors are expressed by CECs [50]. EGF promotes the proliferation of human CECs *in vitro* [49] and *in vivo*, improves eye tissue hydration by stimulating fluid transport in the corneal endothelium [51]. b-FGF, which promotes mitosis of CECs, is sometimes used, at 2~10 ng/ml, in CEC expansion media [48,52,53]. It was present in our PRs only at 0.1~0.5 ng/ml, a dose which might be sufficient to enhance CEC growth when combined with the other platelet growth factors. The role of TGF-β may be more ambiguous as it may at certain concentrations alter CEC expansion and induce formation of myofibroblasts and corneal scarring [38,54] and lead to endothelial-mesenchymal transition [33]. Conversely, TGF-β exerts an anti-inflammatory role in ocular disorders and infections [15]. Testing a platelet lysate depleted in TGF-β through adsorption on an anion-exchanger [55] may be of interest. HGF, which was present at about 0.3 ng/ml in our PRs, is known to stimulate proliferation of CECs in a dose-responsive manner, consistent with the presence of the HGF receptor on the cell surface (MET) [56,57]. Bovine insulin and insulin-like growth factor (IGF)-1 are also used to supplement CEC culture media [48,53,58]. Although we did not measure IGF-1, which is structurally homologous to insulin [59], in the PR or HPR, our previous studies demonstrated that it is present in the plasma compartment of PRs at approximately 50~70 ng/ml [24], so we believe that it was present at similar concentrations in the PR and HPR. Therefore, the natural mix of growth factors present in platelet releasates may be a key element for the isolation and expansion of CECs.

Conclusions

This work establishes for the first time a proof of concept that human PR rich in growth factors can be used as a supplement for serum-free, xeno-free *ex vivo* expansion of CECs. These findings open attractive perspectives for clinical-grade use of CECs for transplantation in patients suffering from corneal diseases. Further work is needed to confirm these data using human CECs and develop a culture system on a suitable substrate for corneal grafting.

Acknowledgments

Thanks are expressed to Shun-Hung Hsiao for his assistance for the SDS-PAGE, Western blot immunofluorescence analyses.

Author Contributions

Conceived and designed the experiments: TB MLC TJW. Performed the experiments: MLC. Analyzed the data: TB MLC TJW. Contributed reagents/materials/analysis tools: TB TJW MLC. Contributed to the writing of the manuscript: TB MLC TJW.

References

- Zavala J, Lopez Jaime GR, Rodriguez Barrientos CA, Valdez-Garcia J (2013) Corneal endothelium: developmental strategies for regeneration. *Eye (Lond)* 27: 579–588.
- Barfort P, Maurice D (1974) Electrical potential and fluid transport across the corneal endothelium. *Exp Eye Res* 19: 11–19.
- Joyce NC (2003) Proliferative capacity of the corneal endothelium. *Progress in Retinal and Eye Research* 22: 359–389.
- Engelmann K, Bohnke M, Friedl P (1988) Isolation and long-term cultivation of human corneal endothelial cells. *Investigative ophthalmology & visual science* 29: 1656–1662.

5. Waring GO 3rd, Bourne WM, Edelhauser HF, Kenyon KR (1982) The corneal endothelium. Normal and pathologic structure and function. *Ophthalmology* 89: 531–590.
6. Hassell JR, Birk DE (2010) The molecular basis of corneal transparency. *Experimental Eye Research* 91: 326–335.
7. Bahar I, Kaiserman I, McAllum P, Slomovic A, Rootman D (2008) Comparison of posterior lamellar keratoplasty techniques to penetrating keratoplasty. *Ophthalmology* 115: 1525–1533.
8. Price MO, Price FW (2010) Endothelial keratoplasty - a review. *Clinical and Experimental Ophthalmology* 38: 128–140.
9. Anonymous (2009) Eye banking statistics for 2008. Press release.
10. Miyata K, Drake J, Osakabe Y, Hosokawa Y, Hwang D, et al. (2001) Effect of donor age on morphologic variation of cultured human corneal endothelial cells. *Cornea* 20: 59–63.
11. Wang TJ, Wang IJ, Chen YH, Lu JN, Young TH (2012) Polyvinylidene fluoride for proliferation and preservation of bovine corneal endothelial cells by enhancing type IV collagen production and deposition. *J Biomed Mater Res A* 100: 252–260.
12. Wang TJ, Wang IJ, Chen S, Chen YH, Young TH (2012) The phenotypic response of bovine corneal endothelial cells on chitosan/polycaprolactone blends. *Colloids Surf B Biointerfaces* 90: 236–243.
13. Peh GSL, Beuerman RW, Colman A, Tan DT, Mehta JS (2011) Human Corneal Endothelial Cell Expansion for Corneal Endothelium Transplantation: An Overview. *Transplantation* 91: 811–819.
14. Li W, Sabater AL, Chen YT, Hayashida Y, Chen SY, et al. (2007) A novel method of isolation, preservation, and expansion of human corneal endothelial cells. *Invest Ophthalmol Vis Sci* 48: 614–620.
15. Peh GS, Toh KP, Wu FY, Tan DT, Mehta JS (2011) Cultivation of human corneal endothelial cells isolated from paired donor corneas. *PLoS One* 6: e28310.
16. Spees JL, Gregory CA, Singh H, Tucker HA, Peister A, et al. (2004) Internalized antigens must be removed to prepare hypoinmunogenic mesenchymal stem cells for cell and gene therapy. *Mol Ther* 9: 747–756.
17. Heiskanen A, Satomaa T, Tiihinen S, Laitinen A, Mannelin S, et al. (2007) N-glycolylneuraminic acid xenotransplantation contamination of human embryonic and mesenchymal stem cells is substantially reversible. *Stem Cells* 25: 197–202.
18. Robertson JS (2006) Bovine serum—regulatory issues. *Dev Biol (Basel)* 123: 269–272; discussion 291–308.
19. Hill AF, Desbruslais M, Joiner S, Sidle KCL, Gowland I, et al. (1997) The same prion strain causes vCJD and BSE. *Nature* 389: 448–450.
20. WHO (2006) WHO guidelines on tissue infectivity distribution in transmissible spongiform encephalopathies. Available: <http://www.who.int/bloodproducts>. Accessed 2014 May 16.
21. CHMP (2003) Note for guidance on the use of bovine serum in the manufacture of human biological medicinal products. European medicine Agency London. CPMP/BWP/1793/02. October. Available: http://www.ema.europa.eu/docs/en_GB/document_library/Scientific_guideline/2013/06/WC500143930.pdf. Accessed 2014 May 16.
22. Burnouf T, Goubran HA, Chen TM, Ou KL, El-Ekiaby M, et al. (2013) Blood-derived biomaterials and platelet growth factors in regenerative medicine. *Blood Rev* 27: 77–89.
23. Su CY, Kuo YP, Lin YC, Huang CT, Tseng YH, et al. (2009) A virally inactivated functional growth factor preparation from human platelet concentrates. *Vox Sang* 97: 119–128.
24. Su CY, Kuo YP, Nieh HL, Tseng YH, Burnouf T (2008) Quantitative assessment of the kinetics of growth factors release from platelet gel. *Transfusion* 48: 2414–2420.
25. Burnouf T, Tseng YH, Kuo YP, Su CY (2008) Solvent/detergent treatment of platelet concentrates enhances the release of growth factors. *Transfusion* 48: 1090–1098.
26. Burnouf T, Kuo YP, Blum D, Burnouf S, Su CY (2012) Human platelet concentrates: a source of solvent/detergent-treated highly enriched brain-derived neurotrophic factor. *Transfusion* 52: 1721–1728.
27. Burnouf T, Lee CY, Luo CW, Kuo YP, Chou ML, et al. (2012) Human blood-derived fibrin releasates: composition and use for the culture of cell lines and human primary cells. *Biologicals* 40: 21–30.
28. Horn P, Bokermann G, Cholewa D, Bork S, Walenda T, et al. (2010) Impact of individual platelet lysates on isolation and growth of human mesenchymal stromal cells. *Cytotherapy* 12: 888–898.
29. Mojica-Henshaw MP, Jacobson P, Morris J, Kelley L, Pierce J, et al. (2013) Serum-converted platelet lysate can substitute for fetal bovine serum in human mesenchymal stromal cell cultures. *Cytotherapy* 15: 1458–1468.
30. Hemedi H, Kalz J, Walenda G, Lohmann M, Wagner W (2013) Heparin concentration is critical for cell culture with human platelet lysate. *Cytotherapy* 15: 1174–1181.
31. Anitua E, Muruzabal F, De la Fuente M, Merayo-Lloves J, Orive G (2014) Effects of heat-treatment on plasma rich in growth factors-derived autologous eye drop. *Exp Eye Res* 119: 27–34.
32. Zhu YT, Hayashida Y, Kheirkhah A, He H, Chen SY, et al. (2008) Characterization and comparison of intercellular adherent junctions expressed by human corneal endothelial cells in vivo and in vitro. *Invest Ophthalmol Vis Sci* 49: 3879–3886.
33. Miyamoto T, Sumioka T, Saika S (2010) Endothelial mesenchymal transition: a therapeutic target in retrocorneal membrane. *Cornea* 29 Suppl 1: S52–56.
34. Riley MV (1977) Anion-sensitive ATPase in rabbit corneal endothelium and its relation to corneal hydration. *Exp Eye Res* 25: 483–494.
35. Stienke MM, McCartney MD, Cantu-Crouch D, Edelhauser HF (1991) Maturation of the corneal endothelial tight junction. *Invest Ophthalmol Vis Sci* 32: 2757–2765.
36. Bieback K, Hecker A, Kocaomer A, Lannert H, Schallmoser K, et al. (2009) Human alternatives to fetal bovine serum for the expansion of mesenchymal stromal cells from bone marrow. *Stem Cells* 27: 2331–2341.
37. Anitua E, Sanchez M, Orive G, Andia I (2007) The potential impact of the preparation rich in growth factors (PRGF) in different medical fields. *Biomaterials* 28: 4551–4560.
38. Hassell JR, Birk DE (2010) The molecular basis of corneal transparency. *Exp Eye Res* 91: 326–335.
39. You LT, Kruse FE, Volcker HE (2000) Neurotrophic factors in the human cornea. *Investigative Ophthalmology & Visual Science* 41: 692–702.
40. Luo W-J, Xing X-M, Wang C-F, Hu L-T, Zhao G-Q, et al. (2012) Effect of recombinant human platelet-derived growth factor B on cat corneal endothelial cell viability mediated by adeno-associated virus. *International Journal of Ophthalmology* 5: 419–423.
41. Imanishi J, Kamiyama K, Iguchi I, Kita M, Sotozono C, et al. (2000) Growth factors: Importance in wound healing and maintenance of transparency of the cornea. *Progress in Retinal and Eye Research* 19: 113–129.
42. Yamamoto H, Gurney ME (1990) Human platelets contain brain-derived neurotrophic factor. *J Neurosci* 10: 3469–3478.
43. Radka SF, Holst PA, Fritsche M, Altar CA (1996) Presence of brain-derived neurotrophic factor in brain and human and rat but not mouse serum detected by a sensitive and specific immunoassay. *Brain Res* 709: 122–301.
44. Fujimura H, Altar CA, Chen R, Nakamura T, Nakahashi T, et al. (2002) Brain-derived neurotrophic factor is stored in human platelets and released by agonist stimulation. *Thromb Haemostasis* 87: 728–734.
45. Zhu C, Joyce NC (2004) Proliferative response of corneal endothelial cells from young and older donors. *Invest Ophthalmol Vis Sci* 45: 1743–1751.
46. Murphy RA, Acheson A, Hodges R, Haskins J, Richards C, et al. (1993) Immunological relationships of NGF, BDNF, and NT-3: recognition and functional inhibition by antibodies to NGF. *J Neurosci* 13: 2853–2862.
47. Kononen J, Soimila S, Persson H, Honkanieni J, Hokfelt T, et al. (1994) Neurotrophins and their receptors in the rat pituitary gland: regulation of BDNF and trkB mRNA levels by adrenal hormones. *Brain Res Mol Brain Res* 27: 347–354.
48. Choi JS, Williams JK, Greven M, Walter KA, Laber PW, et al. (2010) Bioengineering endothelialized neo-corneas using donor-derived corneal endothelial cells and decellularized corneal stroma. *Biomaterials* 31: 6738–6745.
49. Shao Y, Hu D, Chen J (2008) A study on effect of bFGF, EGF and NGF on growth of cultured human corneal endothelial cells. *Yan ke xue bao = Eye Science* / "Yan ke xue bao" bian ji bu 24: 9–12.
50. Wilson SE, Schultz GS, Chegini N, Weng JA, He YG (1994) Epidermal growth-factor, transforming growth-factor-alpha, transforming growth-factor-beta, acidic fibroblast growth-factor, basic fibroblast growth-factor, and interleukin-1 proteins in the cornea. *Experimental Eye Research* 59: 63–71.
51. Iserovich P, Sanchez JM, Reinach PS, Fischberg J (2003) Epidermal growth factor stimulates fluid transport in corneal endothelium ARVO Annual Meeting Abstract Search and Program Planner 2003: 4734.
52. Ishino Y, Sano Y, Nakamura T, Connon CJ, Rigby H, et al. (2004) Amniotic membrane as a carrier for cultivated human corneal endothelial cell transplantation. *Invest Ophthalmol Vis Sci* 45: 800–806.
53. Engelmann K, Friedl P (1989) Optimization of culture conditions for human corneal endothelial cells. *In Vitro Cell Dev Biol* 25: 1065–1072.
54. Chen KH, Hsu WM, Lee SM (2002) Differential effects of transforming growth factor-beta2 on corneal endothelial cell proliferation—A role of serum factors. *Exp Eye Res* 75: 61–67.
55. Burnouf T, Chang CW, Kuo YP, Wu YW, Tseng YH, et al. (2011) A chromatographically purified human TGF-beta1 fraction from virally inactivated platelet lysates. *Vox Sang* 101: 215–220.
56. Wilson SE, Walker JW, Chwang EL, He YG (1993) Hepatocyte growth factor, keratinocyte growth factor, their receptors, fibroblast growth factor receptor-2, and the cells of the cornea. *Invest Ophthalmol Vis Sci* 34: 2544–2561.
57. Kimoto M, Shima N, Yamaguchi M, Amano S, Yamagami S (2012) Role of hepatocyte growth factor in promoting the growth of human corneal endothelial cells stimulated by L-ascorbic acid 2-phosphate. *Invest Ophthalmol Vis Sci* 53: 7583–7589.
58. Yanez-Soto B, Liliensiek SJ, Gasiorowski JZ, Murphy CJ, Nealey PF (2013) The influence of substrate topography on the migration of corneal epithelial wound borders. *Biomaterials* 34: 9244–9251.
59. Rinderknecht E, Humbel RE (1978) The amino acid sequence of human insulin-like growth factor I and its structural homology with proinsulin. *J Biol Chem* 253: 2769–2776.